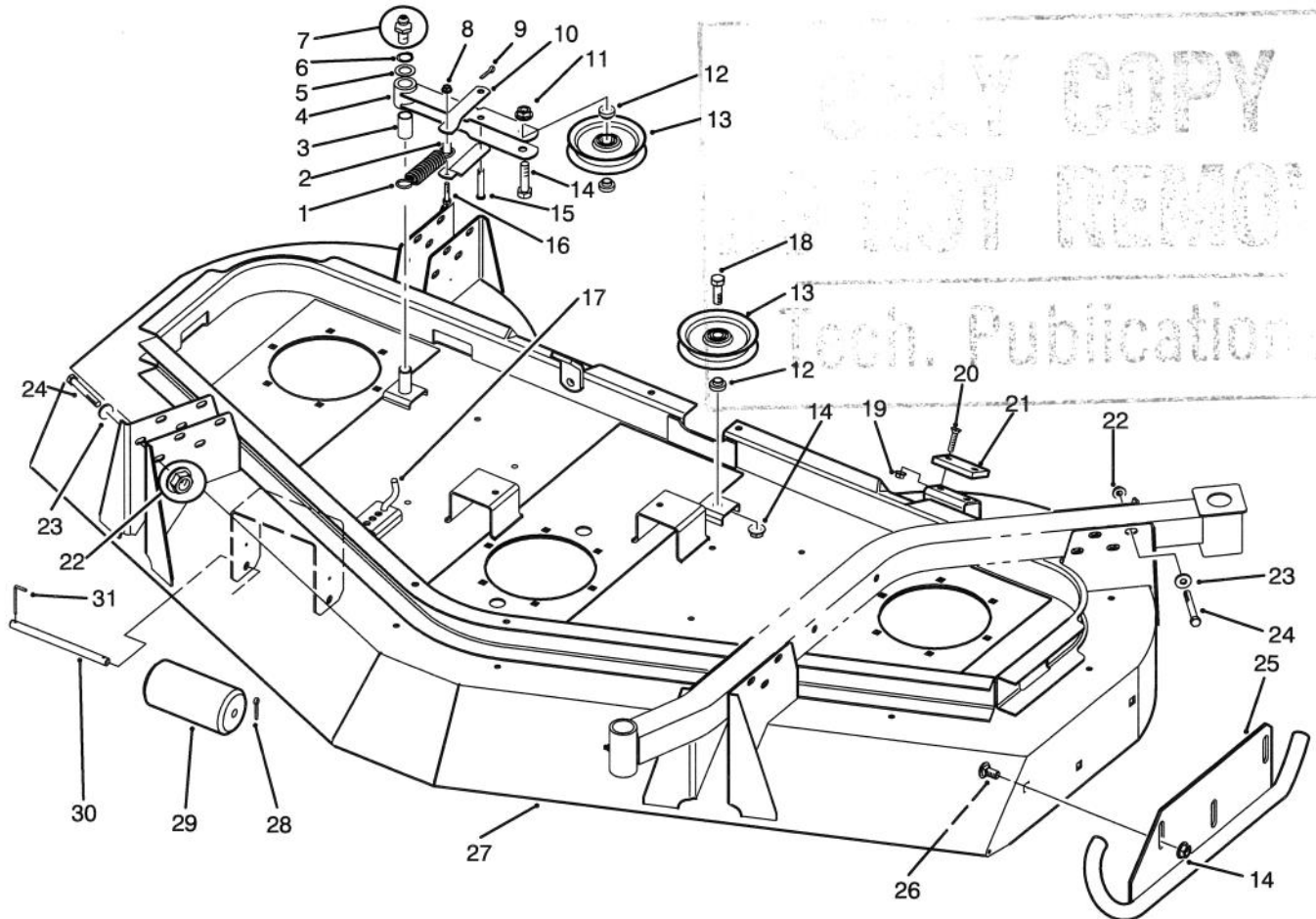




MODEL NO. 30716-40001 & UP

PARTS CATALOG

GUARDIAN® 72" RECYCLER®



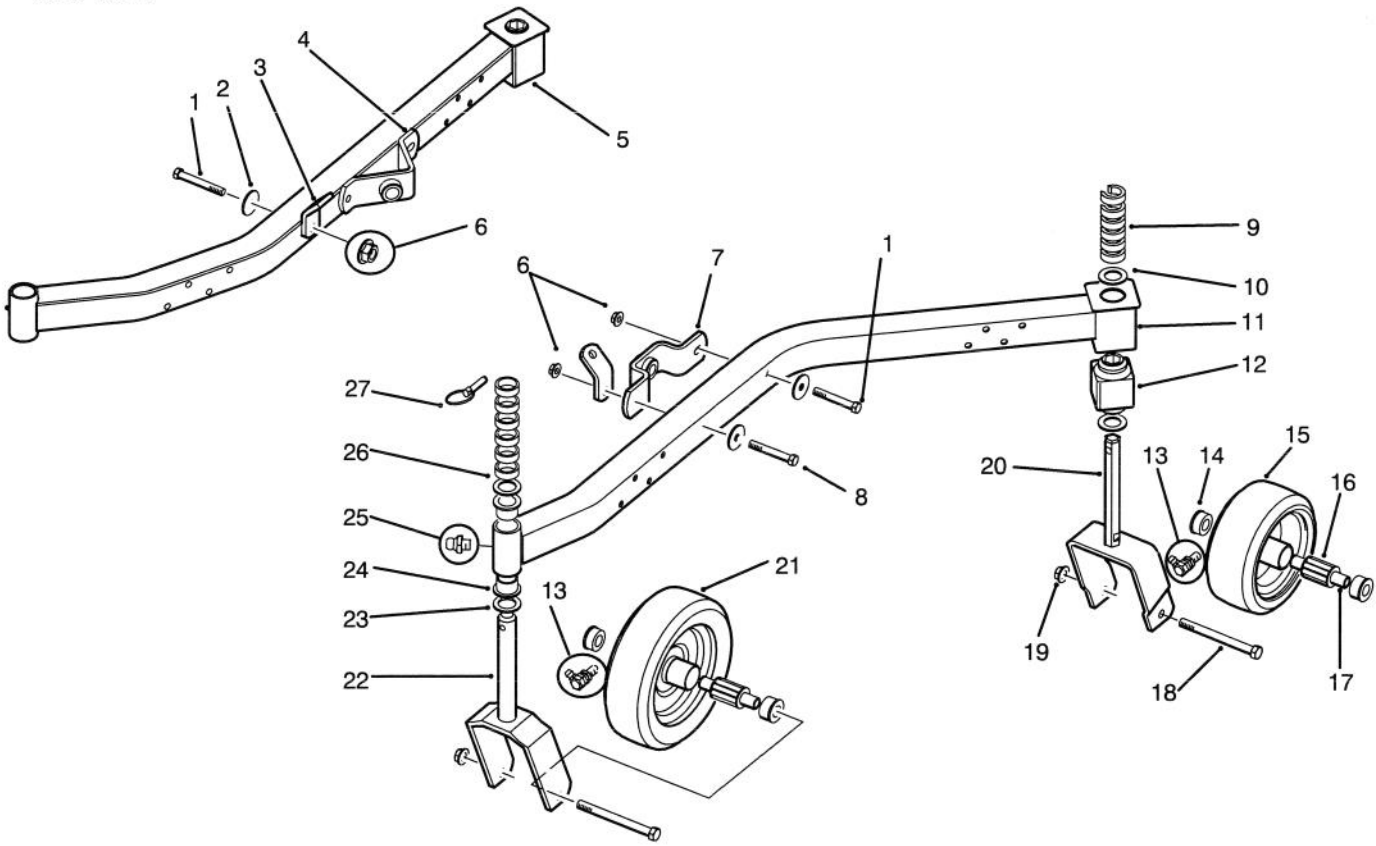
T-1432

HOUSING, IDLERS & SKIDS ASSEMBLY

Ref. No.	Part No.	Description	No. Used
1	85-6390	Spring	1
2	85-5930	Tube - Spring	1
3	256-188	Bushing	1
4	85-5900	Arm - Idler, W.A.	1
5	3-6498	Washer	1
6	32120-72	Ring - Retaining	1
7	302-2	Fitting - Grease	1
8	32128-32	Nut - Flange Head	1
9	3290-467	Pin - Cotter	1
10	85-5920	Bracket - Idler Arm	2
11	32128-49	Nut - Flange Head	8
12	69-6960	Spacer - Idler	3
13	63-1540	Pulley - Idler	2
14	325-8	Screw - Cap Hex. Hd.	1
15	283-82	Pin - Clevis	1
16	321-8	Screw - Cap Hex. Hd.	1

Ref. No.	Part No.	Description	No. Used
17	85-5940	Rod - Spring	1
18	325-6	Screw - Cap Hex. Hd.	1
19	32128-25	Nut - Flange Head	2
20	32108-103	Screw - Flat Head	2
21	69-9290	Pad - Bumper	1
22	32128-19	Nut - Lock Fl. Hd.	16
23	5-0838	Washer	16
24	323-14	Screw - Cap Hex. Hd.	16
25	85-5980	Skid - W. A., LH	1
*	85-5950	Skid - W. A., RH	1
26	3233-9	Bolt - Carriage	6
27	85-5420	Housing - Deck	1
28	3272-11	Pin - Cotter	2
29	36-1740	Roller	3
30	40-6400	Shaft - Roller	3
31	57-0690	Pin - Special	3

*Not Illustrated

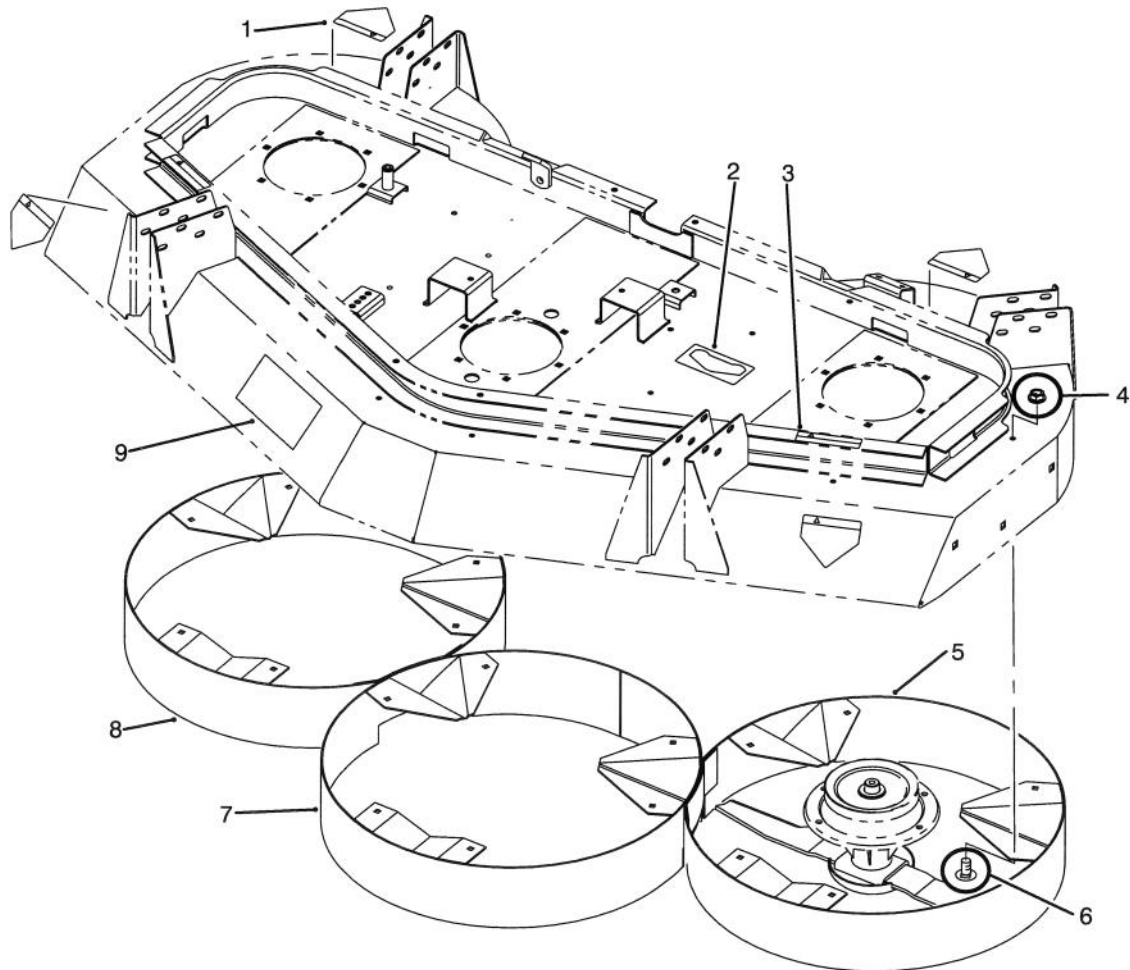


T-1433

CASTOR WHEELS & ARM ASSEMBLY

Ref. No.	Part No.	Description	No. Used
1	324-12	Screw - Cap Hex. Hd.	4
2	66-6480	Washer	5
3	85-5830	Bracket - Chain	2
4	21-3020	Mount - Ball Joint, RH	1
5	92-1766	Castor Arm Assembly RH (Incl. Ref. #12, 24 & 25)	1
6	32128-37	Nut - Flange Head	5
7	85-5810	Mount - Ball Joint, LH	1
8	324-13	Screw - Cap Hex. Hd.	1
9	92-8866	Spacer	12
10	92-1765	Washer	4
11	92-1768	Castor Arm Assembly LH (Incl. Ref. #12, 24 & 25)	1
12	92-1760	Bushing - Rubber	2
13	302-40	Fitting - Grease	4
14	62-5580	Bearing	8
15	85-5760	Assembly - Wheel 8" (Incl. Ref. #13-14 & 16)	2

Ref. No.	Part No.	Description	No. Used
16	83-4740	Bearing - Roller	4
17	62-4340	Spanner	4
18	325-22	Screw - Cap Hex. Hd.	4
19	32128-23	Nut - Lock, Flange Head	4
20	92-1761	Fork - Castor, Rear	2
21	92-1655	Assembly - Wheel 10" (Incl. Ref. #13-14 & 16)	2
22	26-1530	Fork - Castor, Front	2
23	3-6781	Washer	4
24	28-9290	Bushing	4
25	302-5	Fitting - Grease	2
26	63-0070	Spacer	12
27	283-71	Pin - Lynch	4
*	76-1880	Segmented Tire Assy. - 10" (Optional)	2
*	12-1509	Pneumatic Wheel/Tire Assy. (Optional)	2

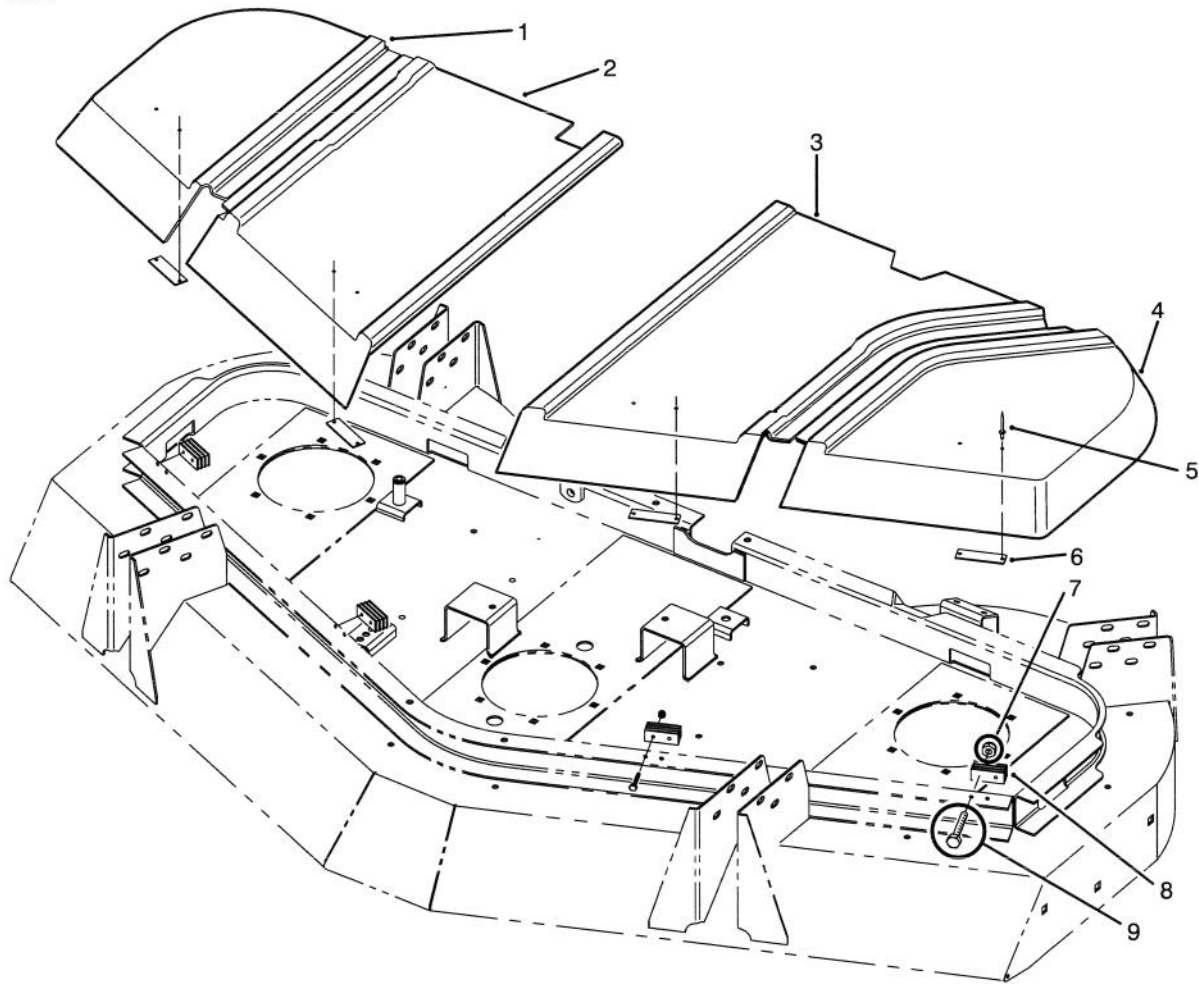


T-1434

CHAMBERS, KICKERS & DECALS

Ref. No.	Part No.	Description	No. Used
1	43-8480	Decal - Danger	4
2	85-6120	Decal - Belt Routing	1
3	85-6410	Decal - Danger	2
4	32128-25	Nut - Flange Head	18
5	85-6460	Chamber W.A. - LH	1

Ref. No.	Part No.	Description	No. Used
6	3230-18	Bolt - Carriage	18
7	85-6480	Chamber W.A. - Center	1
8	85-6470	Chamber W.A. - RH	1
9	85-6430	Decal - Guardian	1

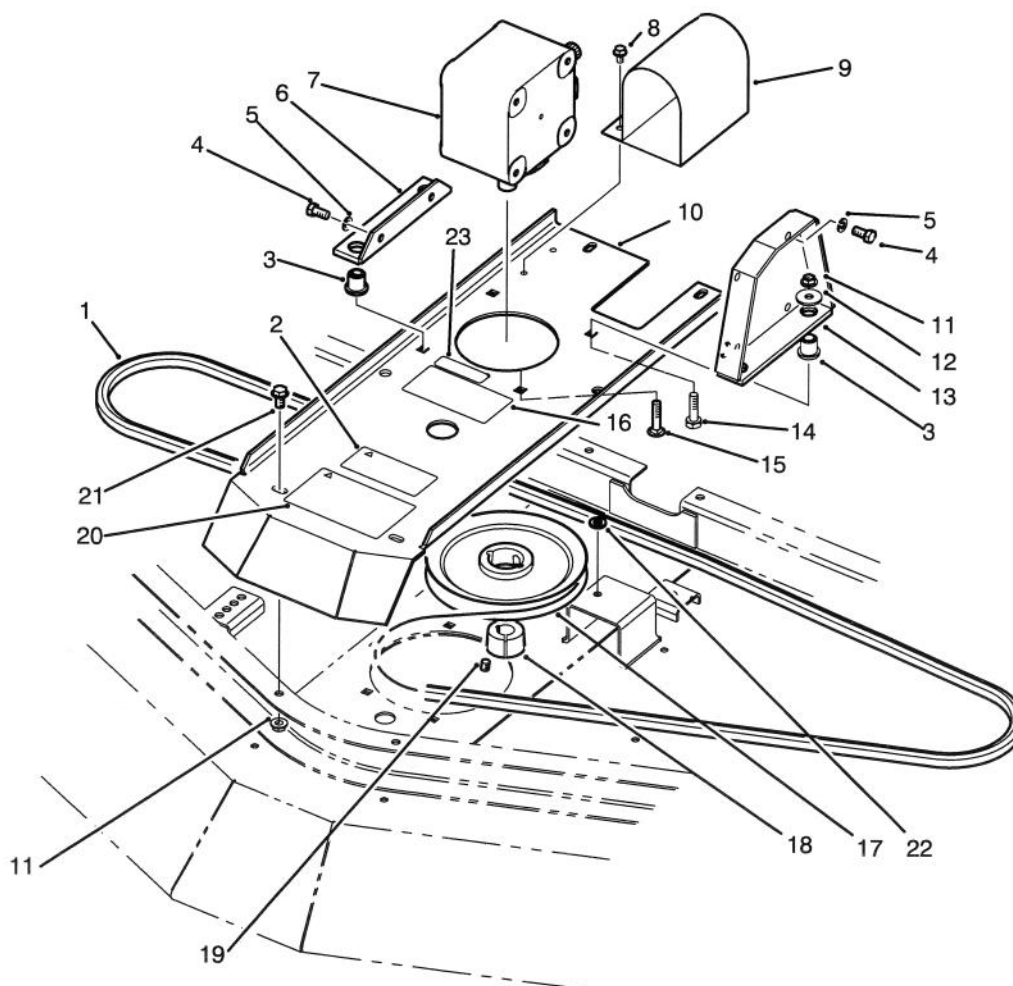


T-1435

COVER ASSEMBLY

Ref. No.	Part No.	Description	No. Used
1	85-6080	Cover - RH	1
2	85-6070	Cover - RH Center	1
3	85-6060	Cover - LH Center	1
4	85-6050	Cover - LH	1
5	3269-25	Rivet - Pop	8

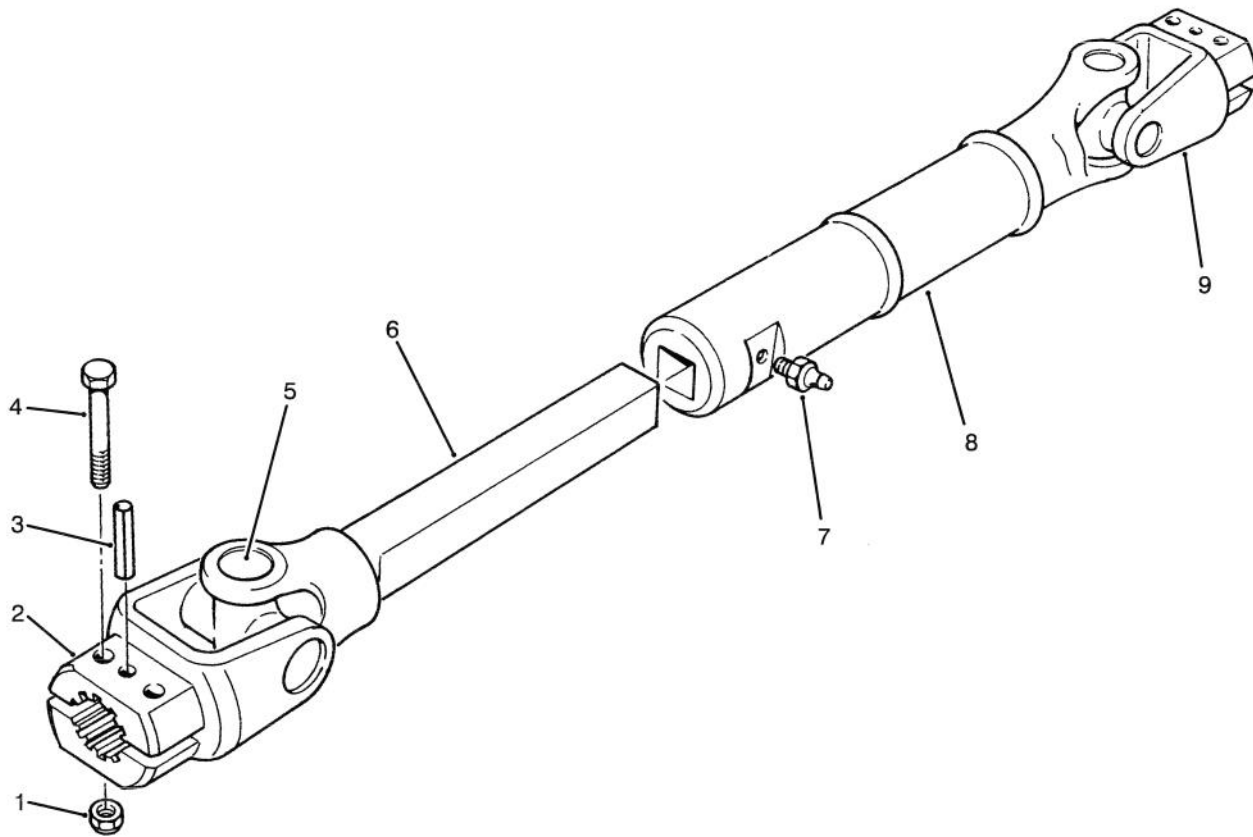
Ref. No.	Part No.	Description	No. Used
6	69-6870	Plate - Magnet	4
7	3296-2	Nut - Lock	8
8	69-6260	Magnet	4
9	32105-1	Screw - Hex. Hd. Machine	8



T-1436A

GEAR BOX & MOUNT ASSEMBLY

Ref. No.	Part No.	Description	No. Used	Ref. No.	Part No.	Description	No. Used
1	69-6220	Belt - Drive	1	13	85-6330	Bracket - W.A., Gear Box	1
2	68-8340	Decal - Torque	1	14	3234-18	Screw - Cap Fl. Hd.	1
3	63-9750	Mount	4	15	3231-26	Bolt - Carriage	3
4	323-4	Screw - Cap Hex. Hd.	6	16	85-6130	Decal - Height-Of-Cut	1
5	3253-21	Washer - Lock	6	17	85-5860	Pulley - W.A.	1
6	68-8560	Bracket - RH, Gear Box	1	18	23-1640	Bushing - Taperlock (Incl. Ref. #19)	1
7	68-6810	Assembly - Gear Box	1	19	3247-4	Screw - Set	2
8	32104-82	Screw - Flange Head	2	20	92-7847	Decal - Warning	1
9	85-5850	Shroud - Universal	1	21	3234-11	Screw - Flange Head	6
10	16-1259	Plate - Mount, Gear Box (Incl. Ref. #2, 16, & 20))	1	22	3256-24	Washer - Flat	A/R
11	32128-21	Nut - Lock, Flange Head	10	23	70-2560	Decal - Lube	1
12	63-8410	Washer	4				

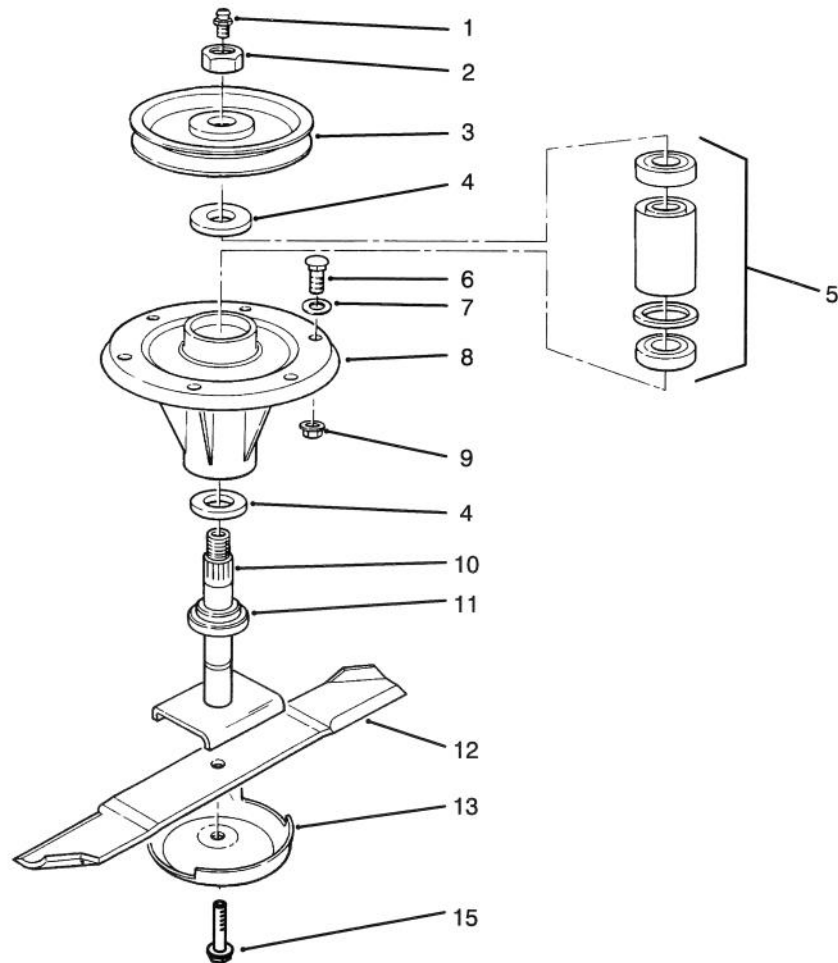


T-1437

DRIVE SHAFT ASSEMBLY (85-5880)

Ref. No.	Part No.	Description	No. Used
1	3296-29	Nut - Lock	2
2	54-9040	Yoke - End	1
3	32121-34	Pin - Roll	2
4	322-9	Screw - Cap Hex. Hd.	2
5	54-9180	Kit - Universal Joint	2

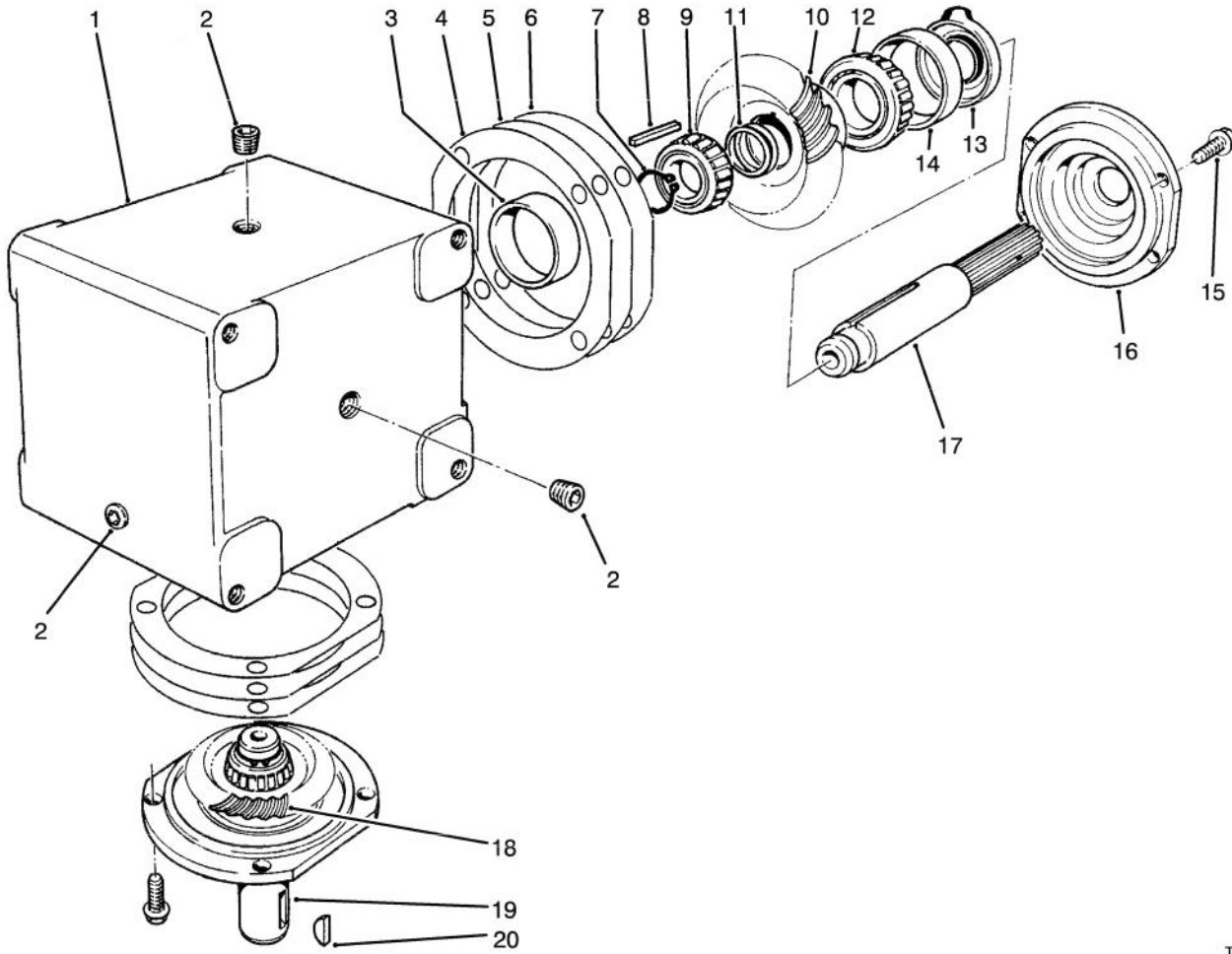
Ref. No.	Part No.	Description	No. Used
6	85-6180	Shaft - Slip Yoke	1
7	302-58	Fitting - Grease	1
8	85-6170	Tube - Slip Yoke	1
9	62-3800	Yoke - End	1



T-1438A

SPINDLE ASSEMBLY

Ref. No.	Part No.	Description	No. Used	Ref. No.	Part No.	Description	No. Used
1	302-2	Fitting - Grease	1	8	69-1530	Housing - Spindle	1
2	3296-49	Nut - Lock	1	9	32128-21	Nut - Flange Head	6
3	85-6030	Pulley - Spindle	1	10	85-6010	Shaft - Spindle	1
4	253-154	Seal - Wave	2	11	92-9800	Spacer - Spindle Shaft	1
5	71-2530	Assembly - Bearing	1	12	85-6040	Blade - 25.18"	1
6	3231-27	Bolt - Carriage	6	13	72-9361	Cup - Anti-Scalp	1
7	3256-24	Washer - Flat	A/R	15	92-5816	Screw - Blade	1

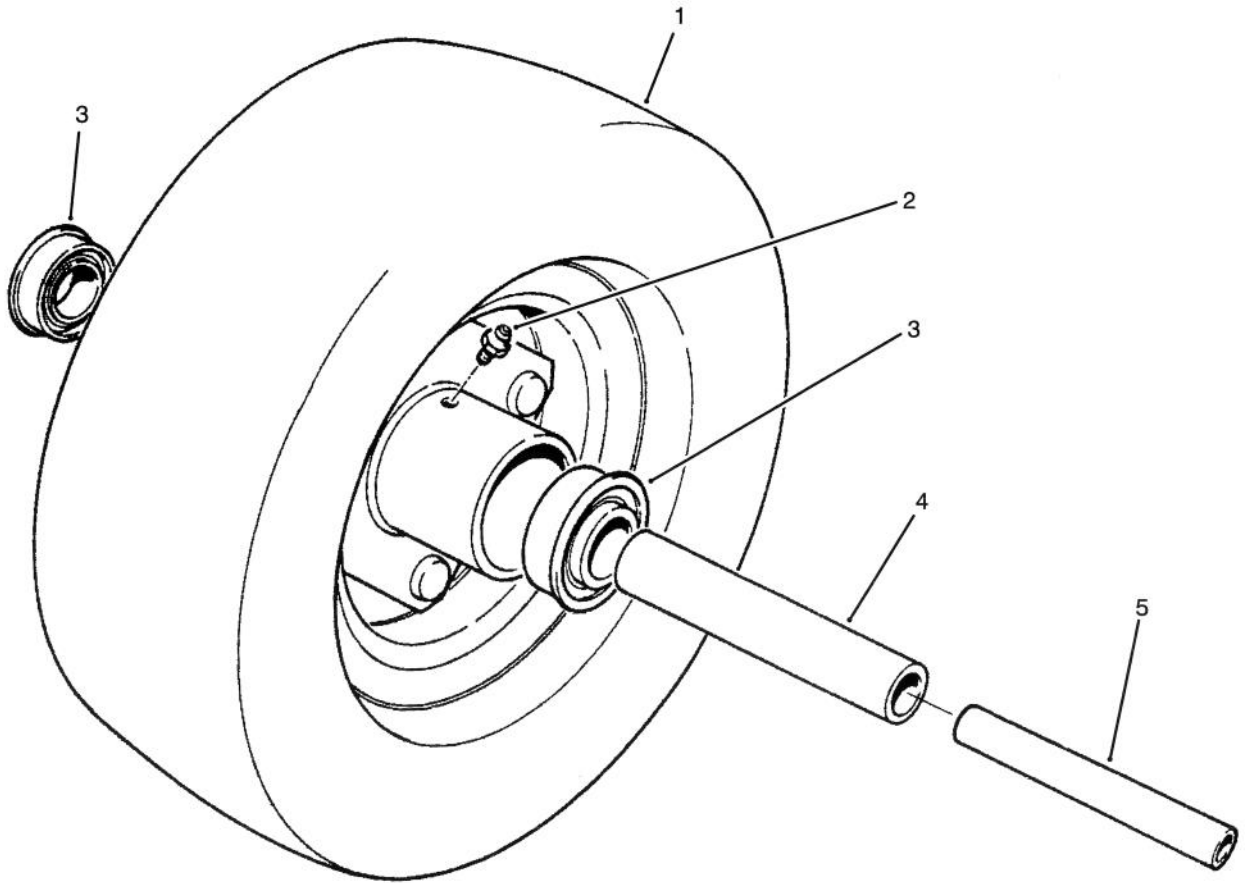


T-0977A

GEAR BOX ASSEMBLY NO. 68-6810

Ref. No.	Part No.	Description	No. Used
1	68-7030	Housing	1
2	62-3490	Plug - Pipe (Solid)	4
3	62-3360	Cup - Bearing	2
4	62-3420	Gasket (.015 in.)	A/R
5	62-3430	Gasket (.005 in.)	A/R
6	62-3440	Gasket (.003 in.)	A/R
7	68-7070	Ring - Retaining	2
8	62-3380	Key	2
9	62-3370	Cone - Bearing	2
10	68-7080	Gear	1

Ref. No.	Part No.	Description	No. Used
11	72-9370	Shim (.020 in.)	2
12	254-94	Cone - Bearing	2
13	62-3400	Seal	2
14	62-3340	Cup - Bearing	2
15	62-3310	Screw - Cap	8
16	62-3410	Cap	2
17	68-7040	Shaft	1
18	68-7060	Gear	1
19	68-7050	Shaft	1
20	3257-5	Key - Woodruff	1

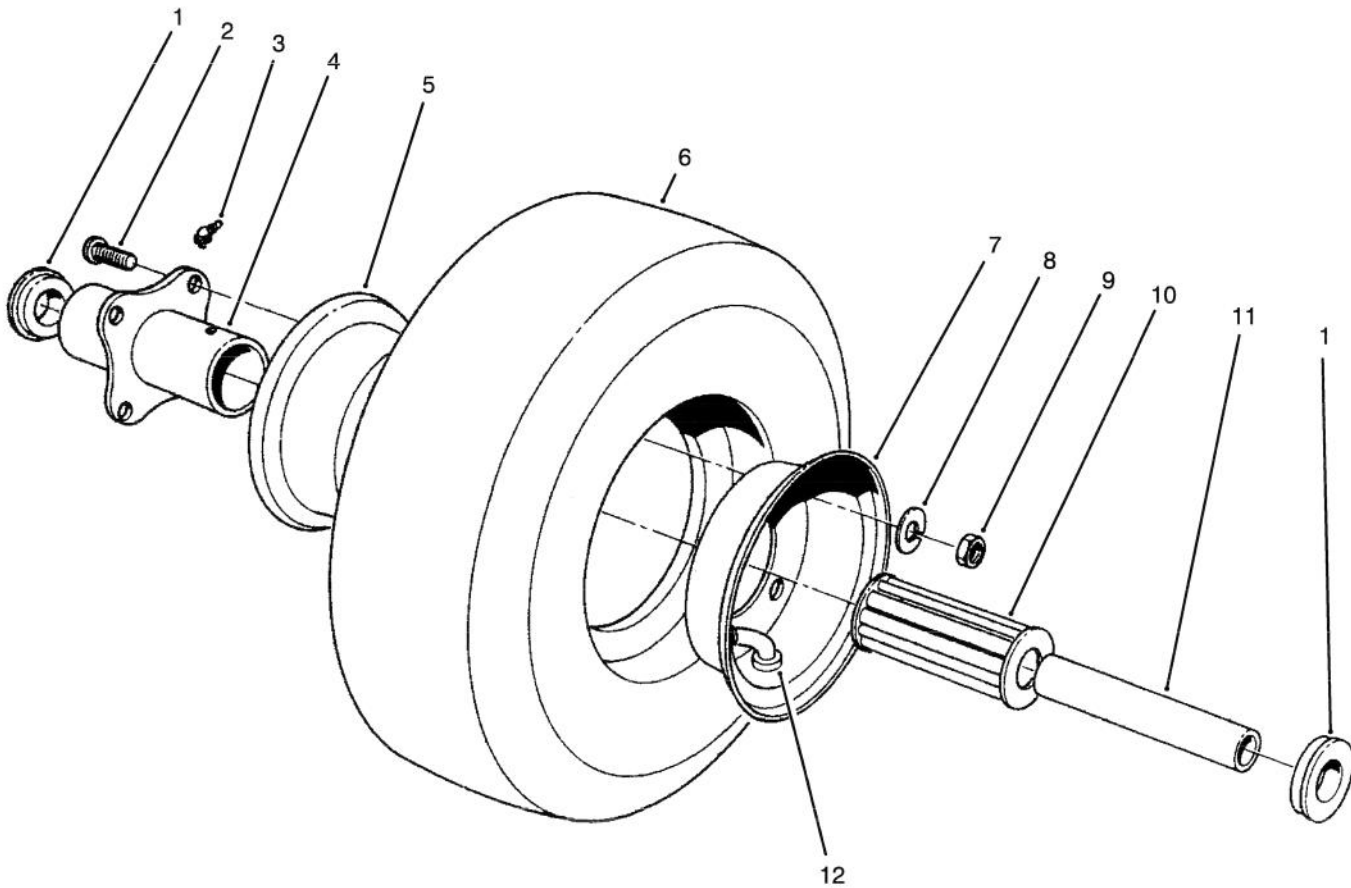


T-1177

10" SEGMENTED FRONT CASTER WHEEL (Optional)

Ref. No.	Part No.	Description	No. Used
1	76-1880	10" Segmented Wheel Assy. (Incl. Ref. #2-5)	1
2	302-5	Fitting - Grease	1

Ref. No.	Part No.	Description	No. Used
3	251-321	Bearing - Ball	2
4	251-332	Spacer - Inner	1
5	80-0040	Spacer	1



T-0448

PNEUMATIC TIRE & WHEEL ASSEMBLY (Optional)

Ref. No.	Part No.	Description	No. Used
1	54-8930	Retainer	2
2	54-8890	Bolt - Wheel	4
3	302-10	Fitting - Grease	1
4	54-8920	Hub - Centered	1
5	54-8910	Wheel Half - Female	1
6	54-8960	Tire	1
7	54-8900	Wheel Half - Male	1

Ref. No.	Part No.	Description	No. Used
8	3253-4	Washer - Lock	4
9	3217-6	Nut - Hex.	4
10	54-8940	Bearing - Roller (Open Cage)	1
11	55-7080	Bushing - Spanner	1
12	54-8950	Tube w/Valve	1

TORO PART NUMBER INDEX

Part No.	Description	Pg. Ref. No. No. Qty.	Part No.	Description	Pg. Ref. No. No. Qty.
3-6498	Washer	1 5 1	71-2530	Assembly - Bearing	7 5 1
3-6781	Washer	2 23 4	72-9361	Cup - Anti-Scalp	7 13 1
5-0838	Washer	1 23 16	72-9370	Shim (.020 in.)	8 11 2
12-1509	Pneumatic Wheel/Tire Assy.	2 * 2	76-1880	10" Segmented Wheel Assy.	9 1 1
16-1259	Plate - Mount, Gear Box	5 10 1	76-1880	Segmented Tire Assy. - 10"	2 * 2
21-3020	Mount - Ball Joint, RH	2 4 1	80-0040	Spacer	9 5 1
23-1640	Bushing - Taperlock	5 18 1	83-4740	Bearing - Roller	2 16 4
26-1530	Fork - Castor, Front	2 22 2	85-5420	Housing - Deck	1 27 1
28-9290	Bushing	2 24 4	85-5760	Assembly - Wheel 8	2 15 2
36-1740	Roller	1 29 3	85-5810	Mount - Ball Joint, LH	2 7 1
40-6400	Shaft - Roller	1 30 3	85-5830	Bracket - Chain	2 3 2
43-8480	Decal - Danger	3 1 4	85-5850	Shroud - Universal	5 9 1
54-8890	Bolt - Wheel	10 2 4	85-5860	Pulley - W.A.	5 17 1
54-8900	Wheel Half - Male	10 7 1	85-5900	Arm - Idler, W.A.	1 4 1
54-8910	Wheel Half - Female	10 5 1	85-5920	Bracket - Idler Arm	1 10 2
54-8920	Hub - Centered	10 4 1	85-5930	Tube - Spring	1 2 1
54-8930	Retainer	10 1 2	85-5940	Rod - Spring	1 17 1
54-8940	Bearing - Roller	10 10 1	85-5950	Skid - W. A., RH	1 * 1
54-8950	Tube w/Valve	10 12 1	85-5980	Skid - W. A., LH	1 25 1
54-8960	Tire	10 6 1	85-6010	Shaft - Spindle	7 10 1
54-9040	Yoke - End	6 2 1	85-6030	Pulley - Spindle	7 3 1
54-9180	Kit - Universal Joint	6 5 2	85-6040	Blade - 25.18"	7 12 1
55-7080	Bushing - Spanner	10 11 1	85-6050	Cover - LH	4 4 1
57-0690	Pin - Special	1 31 3	85-6060	Cover - LH Center	4 3 1
62-3310	Screw - Cap	8 15 8	85-6070	Cover - RH Center	4 2 1
62-3340	Cup - Bearing	8 14 2	85-6080	Cover - RH	4 1 1
62-3360	Cup - Bearing	8 3 2	85-6120	Decal - Belt Routing	3 2 1
62-3370	Cone - Bearing	8 9 2	85-6130	Decal - Height-Of-Cut	5 16 1
62-3380	Key	8 8 2	85-6170	Tube - Slip Yoke	6 8 1
62-3400	Seal	8 13 2	85-6180	Shaft - Slip Yoke	6 6 1
62-3410	Cap	8 16 2	85-6330	Bracket - W.A., Gear Box	5 13 1
62-3420	Gasket (.015 in.)	8 4A/R	85-6390	Spring	1 1 1
62-3430	Gasket (.005 in.)	8 5A/R	85-6410	Decal - Danger	3 3 2
62-3440	Gasket (.003 in.)	8 6A/R	85-6430	Decal - Guardian	3 9 1
62-3490	Plug - Pipe (Solid)	8 2 4	85-6460	Chamber W.A. - LH	3 5 1
62-3800	Yoke - End	6 9 1	85-6470	Chamber W.A. - RH	3 8 1
62-4340	Spanner	2 17 4	85-6480	Chamber W.A. - Center	3 7 1
62-5580	Bearing	2 14 8	92-1655	Assembly - Wheel 10"	2 21 2
63-0070	Spacer	2 26 12	92-1760	Bushing - Rubber	2 12 2
63-1540	Pulley - Idler	1 13 2	92-1761	Fork - Castor, Rear	2 20 2
63-8410	Washer	5 12 4	92-1765	Washer	2 10 4
63-9750	Mount	5 3 4	92-1766	Castor Arm Assembly RH	2 5 1
66-6480	Washer	2 2 5	92-1768	Castor Arm Assembly LH	2 11 1
68-6810	Assembly - Gear Box	5 7 1	92-5816	Screw - Blade	7 15 1
68-7030	Housing	8 1 1	92-7847	Decal - Warning	5 20 1
68-7040	Shaft	8 17 1	92-8866	Spacer	2 9 12
68-7050	Shaft	8 19 1	92-9800	Spacer - Spindle Shaft	7 11 1
68-7060	Gear	8 18 1	251-321	Bearing - Ball	9 3 2
68-7070	Ring - Retaining	8 7 2	251-332	Spacer - Inner	9 4 1
68-7080	Gear	8 10 1	253-154	Seal - Wave	7 4 2
68-8340	Decal - Torque	5 2 1	254-94	Cone - Bearing	8 12 2
68-8560	Bracket - RH, Gear Box	5 6 1	256-188	Bushing	1 3 1
69-1530	Housing - Spindle	7 8 1	283-71	Pin - Lynch	2 27 4
69-6220	Belt - Drive	5 1 1	283-82	Pin - Clevis	1 15 1
69-6260	Magnet	4 8 4	302-2	Fitting - Grease	7 1 1
69-6870	Plate - Magnet	4 6 4	302-2	Fitting - Grease	1 7 1
69-6960	Spacer - Idler	1 12 3	302-5	Fitting - Grease	9 2 1
69-9290	Pad - Bumper	1 21 1	302-5	Fitting - Grease	2 25 2
70-2560	Decal - Lube	5 23 1	302-10	Fitting - Grease	10 3 1

*Not Illustrated

PART NUMBER INDEX (Cont.)

Part No.	Description	Pg. Ref. No. No. Qty.	Part No.	Description	Pg. Ref. No. No. Qty.
302-40	Fitting - Grease	2 13 4	3256-24	Washer - Flat	5 22A/R
302-58	Fitting - Grease	6 7 1	3257-5	Key - Woodruff	8 20 1
321-8	Screw - Cap Hex. Hd.	1 16 1	3269-25	Rivet - Pop	4 5 8
322-9	Screw - Cap Hex. Hd.	6 4 2	3272-11	Pin - Cotter	1 28 2
323-4	Screw - Cap Hex. Hd.	5 4 6	3290-467	Pin - Cotter	1 9 1
323-14	Screw - Cap Hex. Hd.	1 24 16	3296-2	Nut - Lock	4 7 8
324-12	Screw - Cap Hex. Hd.	2 1 4	3296-29	Nut - Lock	6 1 2
324-13	Screw - Cap Hex. Hd.	2 8 1	3296-49	Nut - Lock	7 2 1
325-6	Screw - Cap Hex. Hd.	1 18 1	32104-82	Screw - Flange Head	5 8 2
325-8	Screw - Cap Hex. Hd.	1 14 1	32105-1	Screw - Hex. Hd. Machine	4 9 8
325-22	Screw - Cap Hex. Hd.	2 18 4	32108-103	Screw - Flat Head	1 20 2
3217-6	Nut - Hex.	10 9 4	32120-72	Ring - Retaining	1 6 1
3230-18	Bolt - Carriage	3 6 18	32121-34	Pin - Roll	6 3 2
3231-26	Bolt - Carriage	5 15 3	32128-19	Nut - Lock Fl. Hd.	1 22 16
3231-27	Bolt - Carriage	7 6 6	32128-21	Nut - Flange Head	7 9 6
3233-9	Bolt - Carriage	1 26 6	32128-21	Nut - Lock, Flange Head	5 11 10
3234-11	Screw - Flange Head	5 21 6	32128-23	Nut - Lock, Flange Head	2 19 4
3234-18	Screw - Cap Fl. Hd.	5 14 1	32128-25	Nut - Flange Head	3 4 18
3247-4	Screw - Set	5 19 2	32128-25	Nut - Flange Head	1 19 2
3253-4	Washer - Lock	10 8 4	32128-32	Nut - Flange Head	1 8 1
3253-21	Washer - Lock	5 5 6	32128-37	Nut - Flange Head	2 6 5
3256-24	Washer - Flat	7 7A/R	32128-49	Nut - Flange Head	1 11 8

PRODUCT CHANGES

In an effort to make improvements available to TORO owners as quickly as possible, minor changes are incorporated into Toro's products from time to time that do not become immediately shown in the Parts Catalog. If such a change has been made in your unit, which is not reflected in your manual, see your TORO Distributor or his Authorized TORO Service Dealer for information and part numbers.

IDENTIFICATION AND ORDERING

MODEL AND SERIAL NUMBERS

The Guardian ® 72" Recycler ® has two identification numbers; a model number and a serial number. The two numbers are stamped on a plate which is located on the right hand side of the rear deck channel . In any correspondence concerning the Guardian ® 72" Recycler , supply model and serial numbers to assure that correct information and replacement parts are obtained.

To order replacement parts from an Authorized TORO Service Dealer, supply the following information:

1. Model and serial number of the Guardian ® 72" Recycler.
2. Part number, description, and the quantity of part(s) desired.

NOTE: Do not order by reference number if a parts catalog is being used; use the PART NUMBER.

TABLE OF CONTENTS

Description	Page	Description	Page
Housing, Idler & Skids Assembly	1	Spindle Assembly	7
Castor Wheels & Arm Assembly	2	Gear Box Assembly No. 68-6810	8
Chambers, Kickers & Decals	3	10" Segmented Front Caster Wheel (Optional)	9
Cover Assembly	4	Pneumatic Tire & Wheel Assembly (Optional)	10
Gear Box & Mount Assembly	5	Numerical Parts Index	11-12
Drive Shaft Assembly No. 85-5880	6		

