



Platinum Series Lawn Mower

Model No. 10797 - 270000001 and up.

Parts Catalog

Ordering Replacement Parts

To order replacement parts, please supply the part number, the quantity, and the description of each part desired.

Understanding Reference Numbers

Each Identified part in an illustration has a reference number. The reference number for a part also appears in the parts list, along with other information about the part.

This catalog uses two special reference number formats, one to indicate parts in a service assembly and another to indicate the quantity of a given part in an illustration.

Service Assembly Reference Numbers

Parts in service assemblies have reference numbers in the form a:b. The a represents the reference number of the entire service assembly and the b represents a sequential number unique to each part within the service assembly.

For example, a wheel assembly might be identified by reference number 6, the tire by 6:1, the valve by 6:2, and the wheel by 6:3. When you order the assembly identified by reference number 6, you receive all parts identified by reference numbers 6:1, 6:2, and 6:3. However, you may also order any part individually. Reference numbers of this type appear in illustrations and in part lists.

Reference Numbers Indicating Quantity

In an illustration, if a reference number indicates more than one part, the reference number has the form nX y. The n represents the quantity of the part, the X is the multiplication symbol, and the y represents the reference number.

For example, in an illustration, the reference number 2X 37 means that two of the parts identified by reference number 37 are indicated.

Contents

Description	Page	Description	Page
Front End and Tunnel Assembly 3	Camshaft Pulley Assembly Honda GCV160A NBL1 15
Rear Axle and Transmission Assembly 4	Recoil Starter Assembly Honda GCV160A NBL1 16
Upper Handle Assembly 5	Fan Cover Assembly Honda GCV160A NBL1 17
Lower Handle Assembly 6	Carburetor Assembly Honda GCV160A NBL1 18
Blade and Engine Assembly 7	Air Cleaner Assembly Honda GCV160A NBL1 19
Blade Control System Assembly 8	Muffler Assembly Honda GCV160A NBL1 20
Blade Control Upper Handle Assembly 9	Flywheel Assembly Honda GCV160A NBL1 21
Rear Bag Assembly 10	Control Assembly Honda GCV160A NBL1 22
Cylinder Barrel Assembly Honda GCV160A NBL1 11	Top Cover Assembly Honda GCV160A NBL1 23
Oil Pan Assembly Honda GCV160A NBL1 12	Label Assembly Honda GCV160A NBL1 24
Crankshaft Assembly Honda GCV160A NBL1 13	Attachments and Accessories List 25
Piston and Connecting Rod Assembly Honda GCV160A NBL1 14		

Part Description Abbreviations

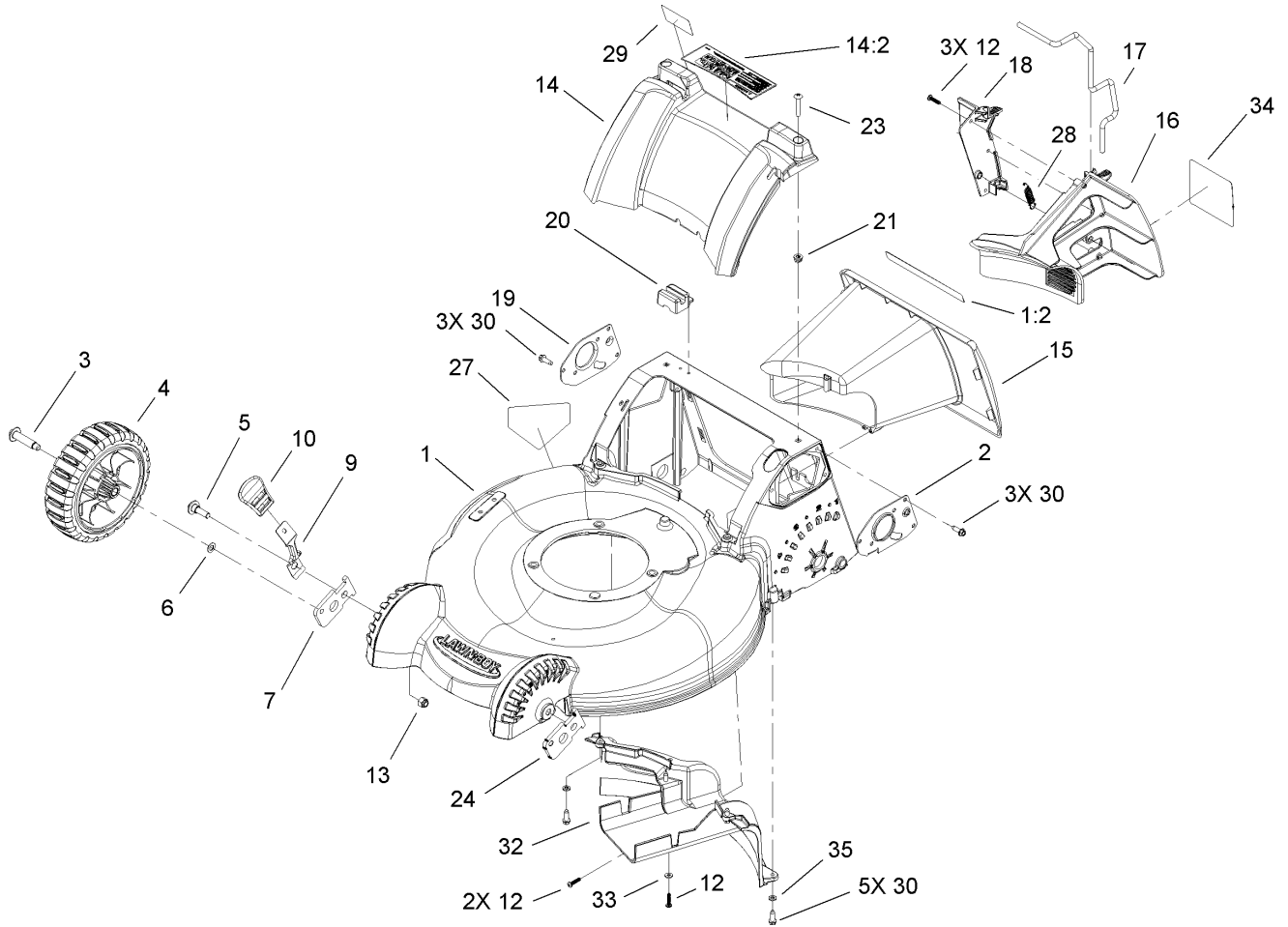
Part descriptions in this catalog may include the following abbreviations.

AR. as required	HYD. hydraulic
ASM. assembly	LH. left hand
BBC. blade brake clutch	NI. nylon insert
CARR. carriage	NPTF. national pipe thread fine
DEG. degrees	PFH. phillips flat head
EXT. external	PPH. phillips pan head
FH. flat head	PPHTF. phillips pan head thread forming
GA. gauge	PRH. phillips round head
HD. heavy-duty	PTH. phillips truss head
HF. hex flange	PTO. power-take-off
HH. hex head	RH. right hand
HHF. hex head flange	ROPS. roll-over protection system
HHFTF. hex head flange thread forming	SFH. slotted fillister head
HJ. hex jam	SHH. slotted hex head
HLH. hex lag head	SHWH. slotted hex washer head
HOC. height-of-cut	SPH. slotted pan head
HSBH. hex socket button head	SQH. square head
HSFH. hex socket flat head	SRH. slotted round head
HSH. hex socket head	STD. standard
HWH. hex washer head	TAP. self tapping
HWHTF. hex washer head thread forming	TTH. torx truss head

Footnotes

- ❶ Not illustrated
- ❷ Obtain from your local Honda dealer

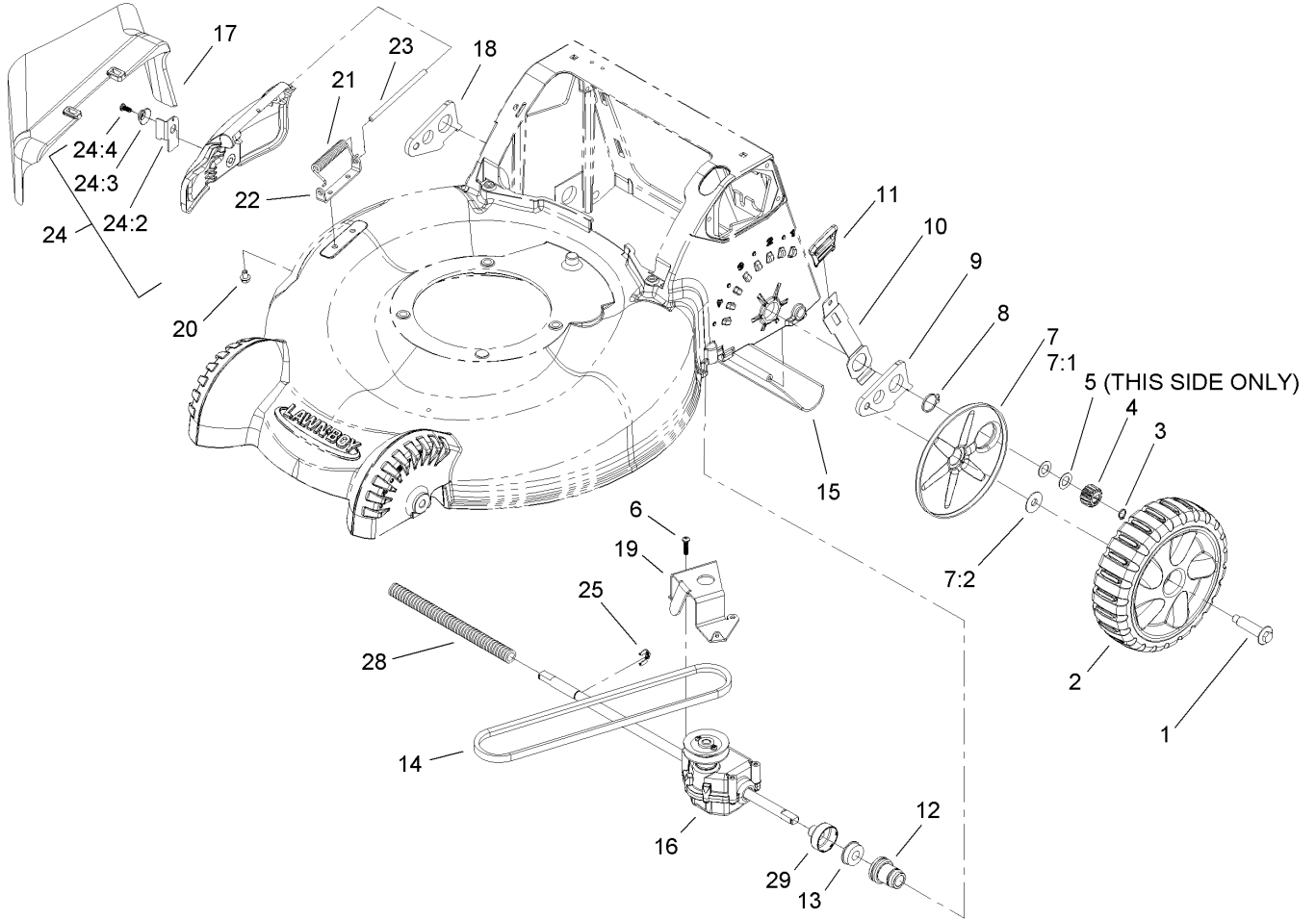
- ❸ Not serviced separately



Front End and Tunnel Assembly

Ref	Part No.	Qty.	Description
1	110-9419	1	Housing ASM
2	110-9415-03	1	Mount-Handle, LH
3	614650	2	Bolt-Shoulder
4	107-3898	2	8 Inch Wheel ASM
5	614672	2	Bolt-Shoulder
6	40-1940	2	Washer
7	110-9421	1	Arm-Pivot, RH
9	110-9434	2	Arm-Spring, Front
10	110-0549	2	Knob-HOC
1:2	107-1941	1	Decal-Safety, Bag
12	108-7476	6	Screw-Plastite
13	3296-39	2	Nut-Lock, NI
14	108-9349	1	Cover-Rear
14:2	107-3888	1	Decal-Safety
15	110-9455	1	Tunnel
16	110-9446	1	Plug-Mulch, LH
17	110-9448	1	Latch-Mulch Plug
18	110-9447	1	Plug-Mulch, RH
19	110-9416-03	1	Mount-Handle, RH
20	110-1788	1	Module-Switch
21	94-1610	2	Nut-Clip
23	108-0965	2	Screw-PTH
24	110-9420	1	Arm-Pivot, LH
27	94-8072	1	Decal-Danger

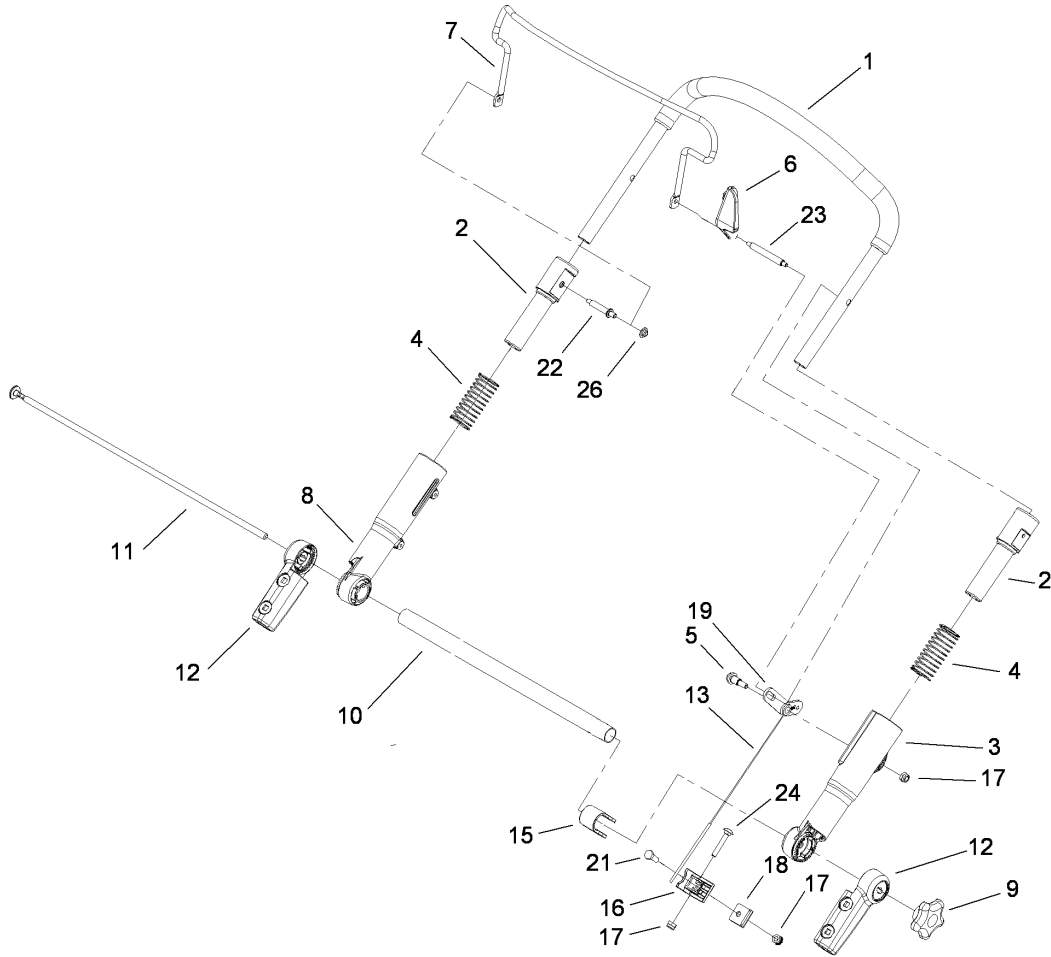
Ref	Part No.	Qty.	Description
28	110-9458	1	Spring-Extension
29	107-1938	1	Decal-Bag Attachment
30	49-2040	11	Screw-HWHTF
31	110-9468	1	Mulch Plug ASM
32	110-9423	1	Baffle-Rear
33	3256-14	1	Washer-Flat
34	110-9457	1	Decal-Mulch Plug
35	3256-22	2	Washer-Flat



Rear Axle and Transmission Assembly

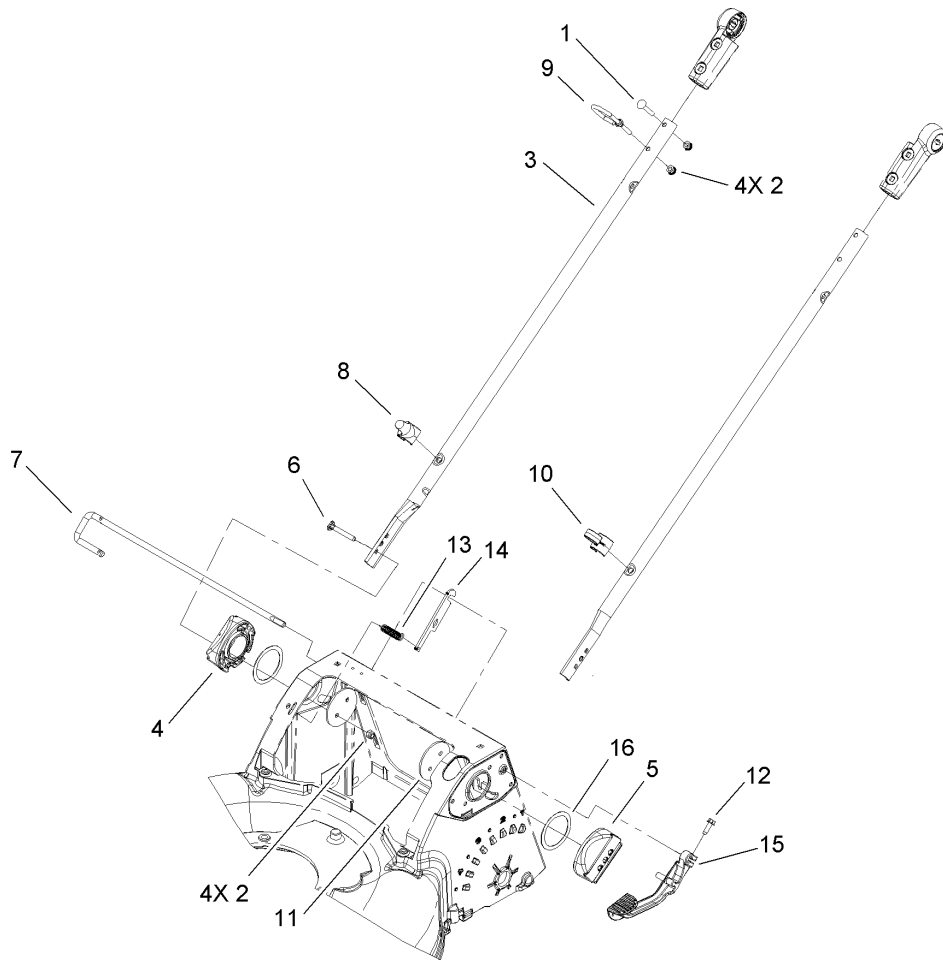
Ref	Part No.	Qty.	Description
1	614650	2	Bolt-Shoulder
2	107-3906	2	Rear Wheel ASM
3	32151-61	2	Ring-Retaining
4	110-9417	2	Pinion
5	36-4780	2	Washer-Plain
6	108-7476	3	Screw-Plastite
7	110-1793	2	Wheel Cover ASM
7:1		1	Cover-Wheel
7:2	614426	1	Washer-Stepped
8	32151-36	2	Ring-Retaining
9	108-9344	1	Arm-Rear Pivot, LH
10	110-9445	2	Arm-Spring, Rear
11	110-0549	2	Knob-HOC
12	110-9422	2	Retainer-Bearing
13	104-8699	2	Bearing-Ball
14	110-9429	1	V-Belt
15	112-8768	1	Shield-Trailing
16	110-9414	1	Transmission ASM
17	105-3028	1	Chute-Discharge, Side
18	108-9343	1	Arm-Rear Pivot, RH
19	110-9418-03	1	Bracket-Transmission
20	99-8445	2	Screw-HWH
21	99-5293	1	Spring-Torsion
22	112-6416	1	Bracket-Cover

Ref	Part No.	Qty.	Description
23	99-5291	1	Rod-Cover
24	106-8376	1	Discharge Door ASM
24:2	107-0795	1	Latch-Door
24:3	107-7456	1	Cap-Door
24:4	107-7461	1	Screw-Plastite
25	65-2720	1	Ring-Clip, Locking
28	24-7922	1	Cover-Shaft, Drive
29	114-2755	2	Cap-Bearing



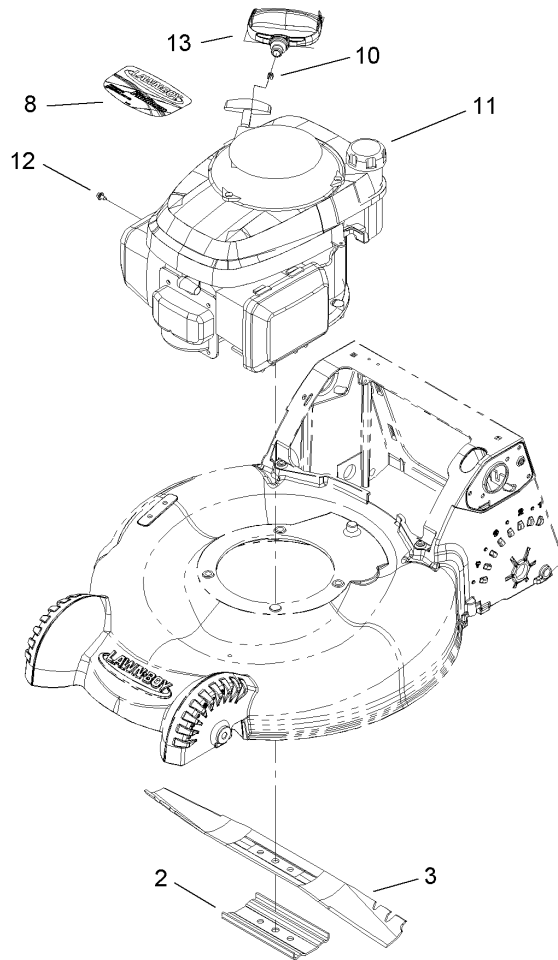
Upper Handle Assembly

Ref	Part No.	Qty.	Description
1	108-0974	1	Upper Handle ASM
2	112-8754	2	Sleeve-Inner
3	112-1544	1	Sleeve-Outer, LH
4	107-3869	2	Spring-Compression
5	104-0858	1	Bolt-Shoulder
6	112-8764	1	Stop-Pivot
7	107-3874-03	1	Bail-Brake
8	112-1545	1	Sleeve-Outer, RH
9	107-3937	1	Knob
10	107-3867-03	1	Tube-Cross
11	107-3871	1	Rod-Threaded
12	107-3865	2	Mount-Handle, Lower
13	110-9465	1	Cable-Traction
15	108-1045	1	Support-Cable
16	108-1046	1	Support-Guide, Cable
17	3296-73	3	Nut-Lock, NI
18	108-7454	1	Clamp-Cable
19	107-3893	1	Lever-Traction
21	321-4	1	Screw-HH
22	108-0959	1	Pin-Handle
23	108-1008	1	Pin-Bail, LH
24	108-0988	1	Screw-CARR
26	108-9378	1	Retainer-Push On



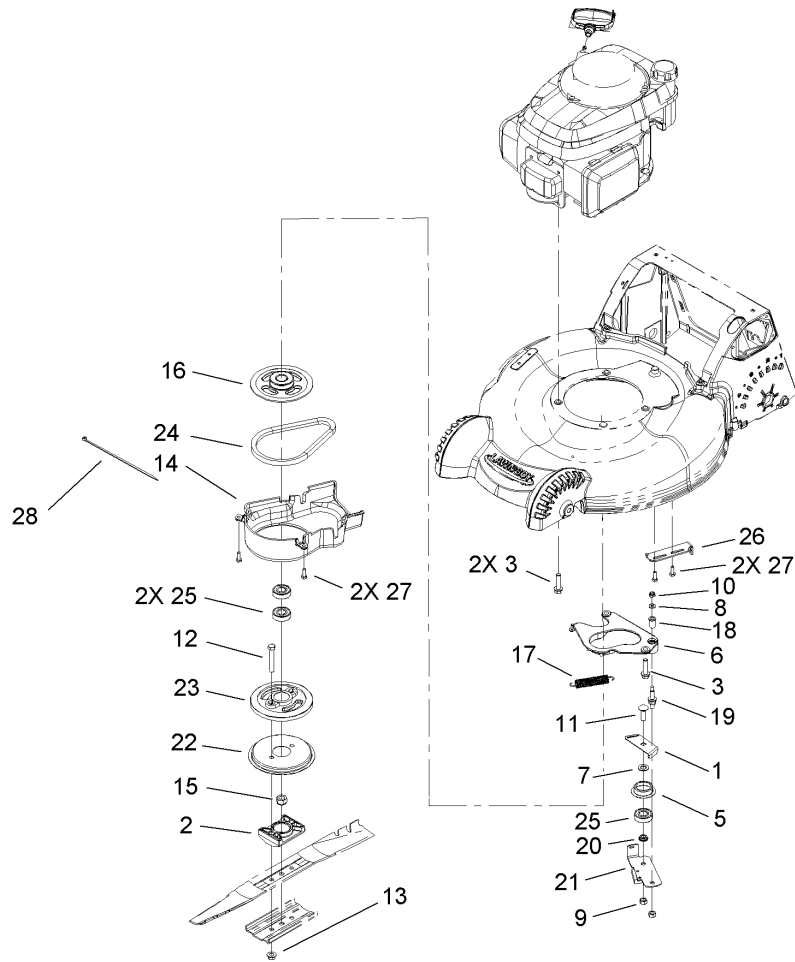
Lower Handle Assembly

Ref	Part No.	Qty.	Description
1	108-0988	3	Screw-CARR
2	3296-73	8	Nut-Lock, NI
3	107-3887-03	2	Tube-Lower
4	108-9339-03	1	Mount-Handle, RH
5	108-9340-03	1	Mount-Handle, LH
6	95-4453	4	Screw
7	112-8755	1	Handle-Rod, Release
8	108-0994	1	Guide-Rope, Lower
9	107-3908	1	Guide-Rope, Upper
10	106-6805	1	Guide-Cable
11	107-3944-03	2	Plate
12	49-2040	1	Screw-HWHTF
13	112-1542	1	Spring-Extension
14	112-1539	1	Plate-Release Rod
15	110-1823-03	1	Lever-Release
16	107-3947	2	Washer-Nylon



Blade and Engine Assembly

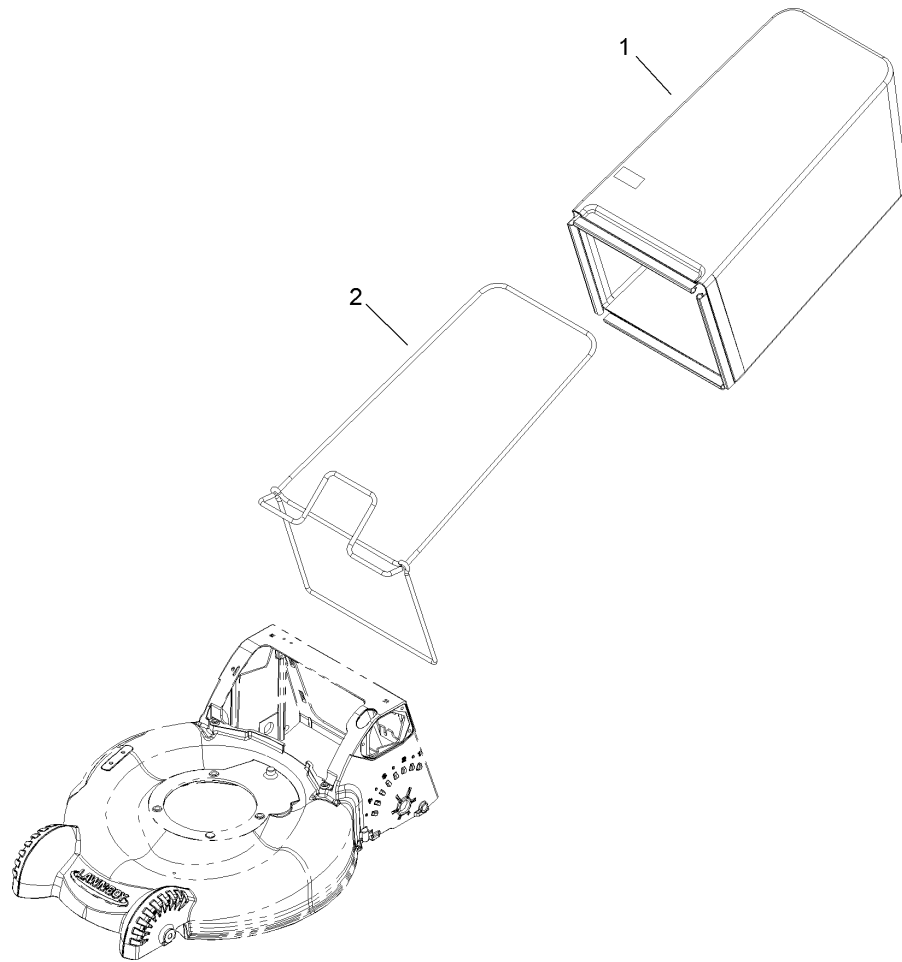
Ref	Part No.	Qty.	Description				
2	108-3766-03	1	Support-Blade				
3	108-0954-03	1	Blade-21 Inch				
8	110-9487	1	Decal-Engine				
10	92-1701	1	Stop-Rope				
11		1	Engine-Honda, Gcv160A Nbl1				
12	98-1394	1	Screw-HWH				
13	110-1778	1	Handle-Recoil				



Blade Control System Assembly

Ref	Part No.	Qty.	Description
1	107-7471	1	Plate-Guide
2	107-7487	1	Support-Blade
3	32144-102	3	Screw-HWH
5	108-3790	1	Retainer-Belt
6	107-0761	1	Plate-Anchor
7	605256	1	Washer
8	3256-16	1	Washer-Flat
9	603773	2	Nut
10	3296-73	1	Nut-Lock, NI
11	3231-25	1	Screw-CARR
12	3211-42	2	Screw-HH
13	54-9190	1	Nut-Lock
14	107-7488	1	Cover
15	108-9342	1	Nut-Hex
16	110-7456	1	Pulley
17	108-3792	1	Spring-Tension, Brake
18	107-0797	1	Bushing
19	107-0759	1	Bolt-Shoulder
20	107-0758	1	Spacer-Bearing
21	107-7477	1	Brake Arm ASM
22	108-3787	1	Disc
23	107-0754	1	Drum
24	110-1790	1	Belt-BBC
25	100-1048	3	Bearing-Ball

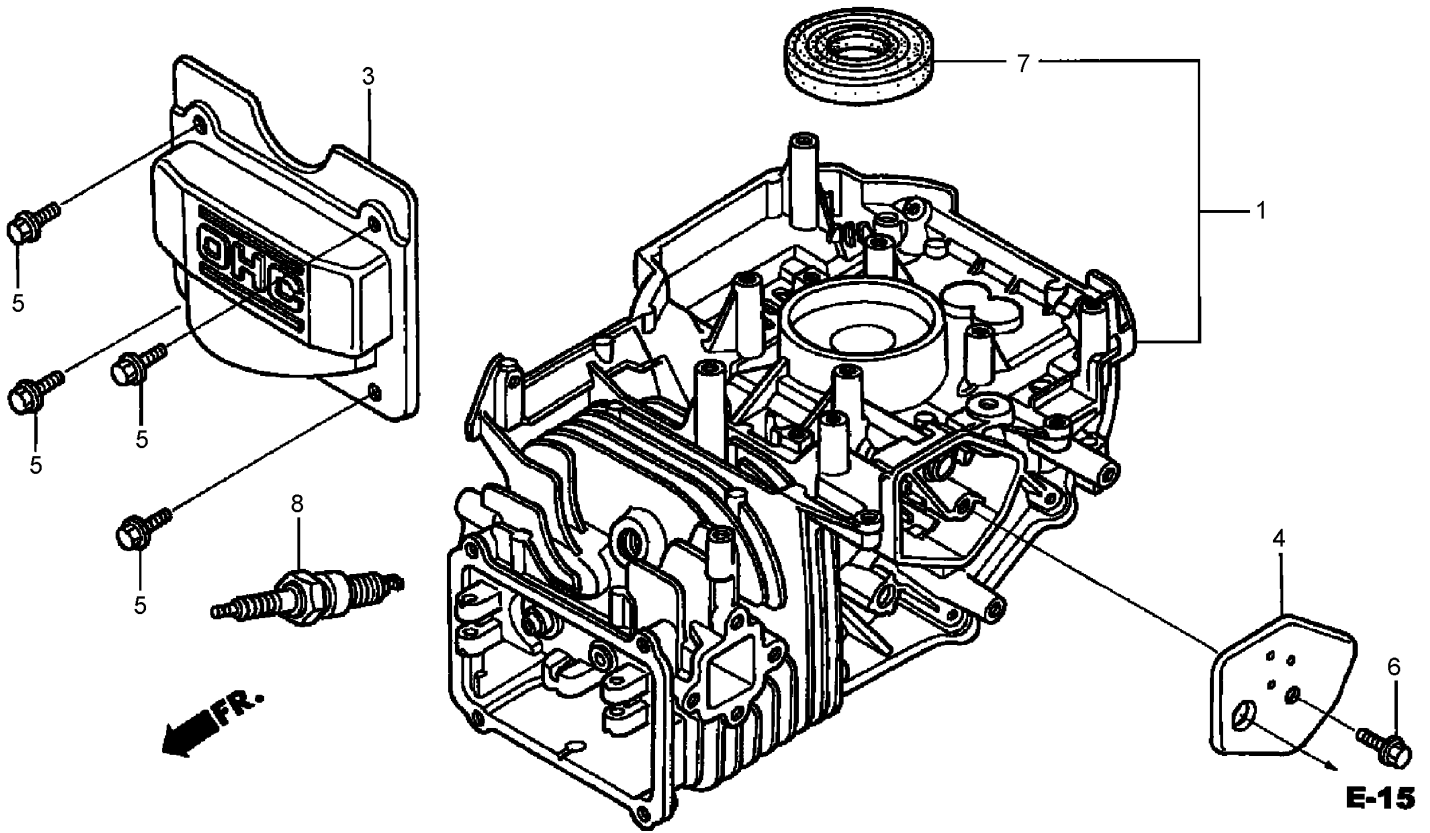
Ref	Part No.	Qty.	Description
26	110-9425-03	1	Bracket-Cable
27	49-2040	4	Screw-HWHTF
28	614249	1	Strap-Tie



Rear Bag Assembly

Ref	Part No.	Qty.	Description
1	110-9483	1	Grass Bag ASM
2	112-8750-03	1	Frame-Bag

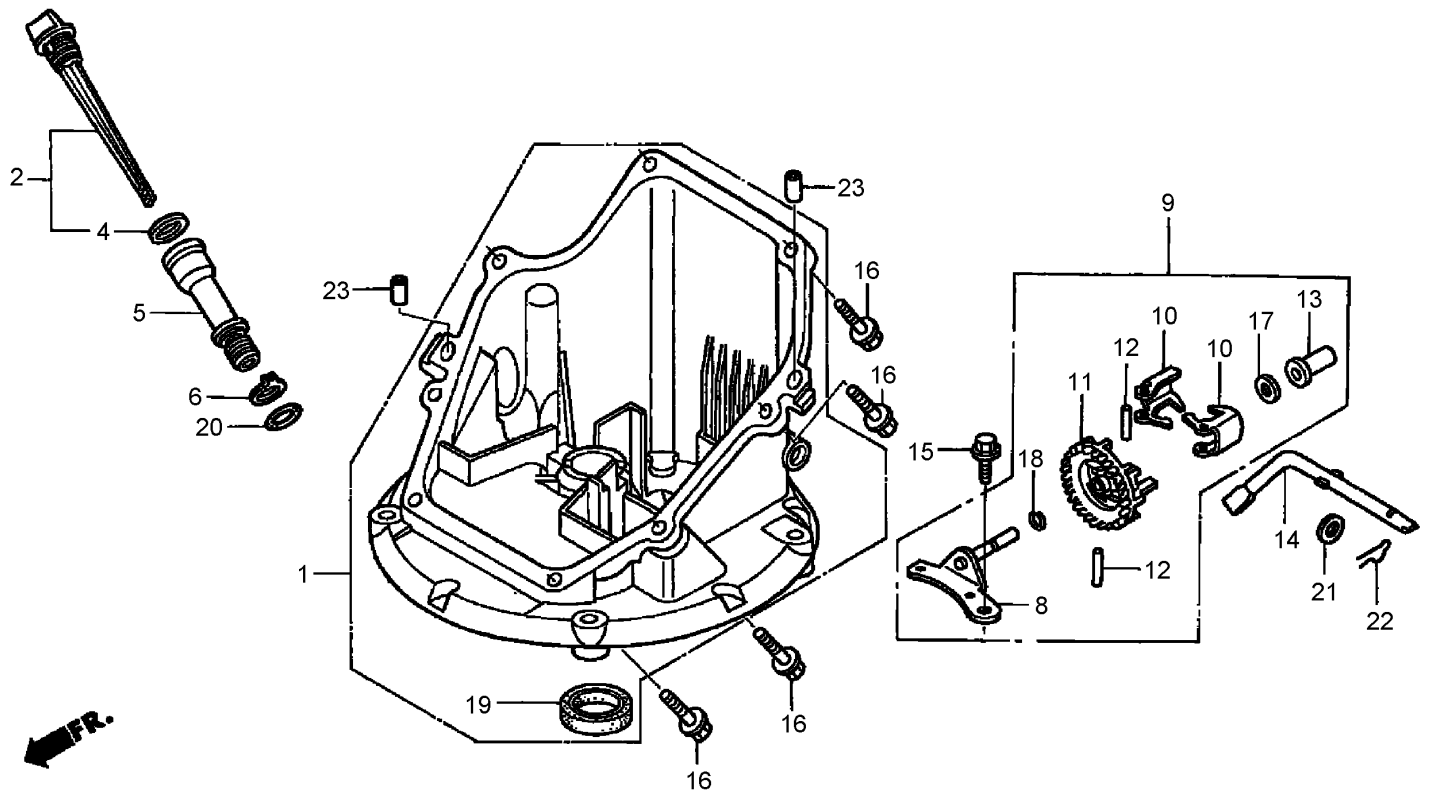
|--|--|--|--|



Cylinder Barrel Assembly Honda GCV160A NBL1

Ref	Part No.	Qty.	Description
❶	12000-ZL8-415	1	Cylinder ASM (010)
❸	12311-ZL8-000	1	Cover-Head
❹	12355-ZL8-000	1	Cover-Breather (Breather Valve ASM)
❺	90013-883-000	4	Bolt-Flange (6X12) (C T200)
❻	90014-952-000	1	Bolt-Flange (6X14) (C T200)
❼	91201-ZL8-003	1	Seal (25.4X62X6)
❽	98079-56846	1	Spark Plug (B P R 6E S) (N G K)

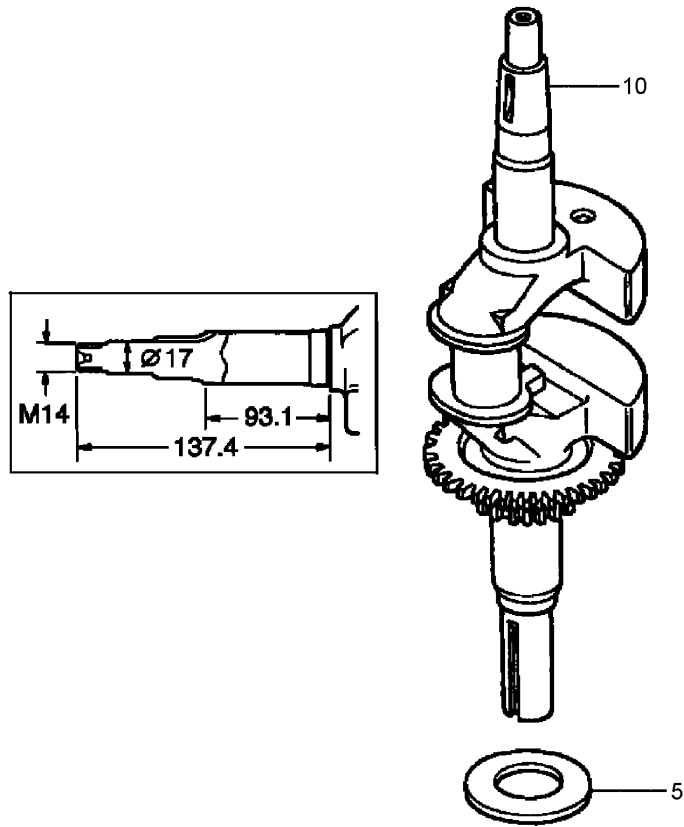
--	--	--	--



Oil Pan Assembly Honda GCV160A NBL1

Ref	Part No.	Qty.	Description
1	11300-ZM0-405	1	Oil Pan ASM (000)
2	15650-ZM0-801	1	Oil Level Gauge ASM
4	15625-ZE6-000	1	Gasket-Cap, Oil Filler
5	15631-ZM0-000	1	Extension-Filler, Oil
6	15639-ZM0-000	1	Washer-Lock, Extension
8	16508-ZM0-010	1	Shaft-Holder, Governor
9	16510-ZM0-010	1	Governor ASM
10	16511-ZL8-000	2	Weight-Governor
11	16512-ZM0-000	1	Holder-Weight, Governor
12	16513-ZE1-000	2	Pin-Weight, Governor
13	16531-ZE1-000	1	Slider-Governor
14	16541-ZM0-000	1	Shaft-Arm, Governor
15	90014-952-000	1	Bolt-Flange (6X14) (C T200)

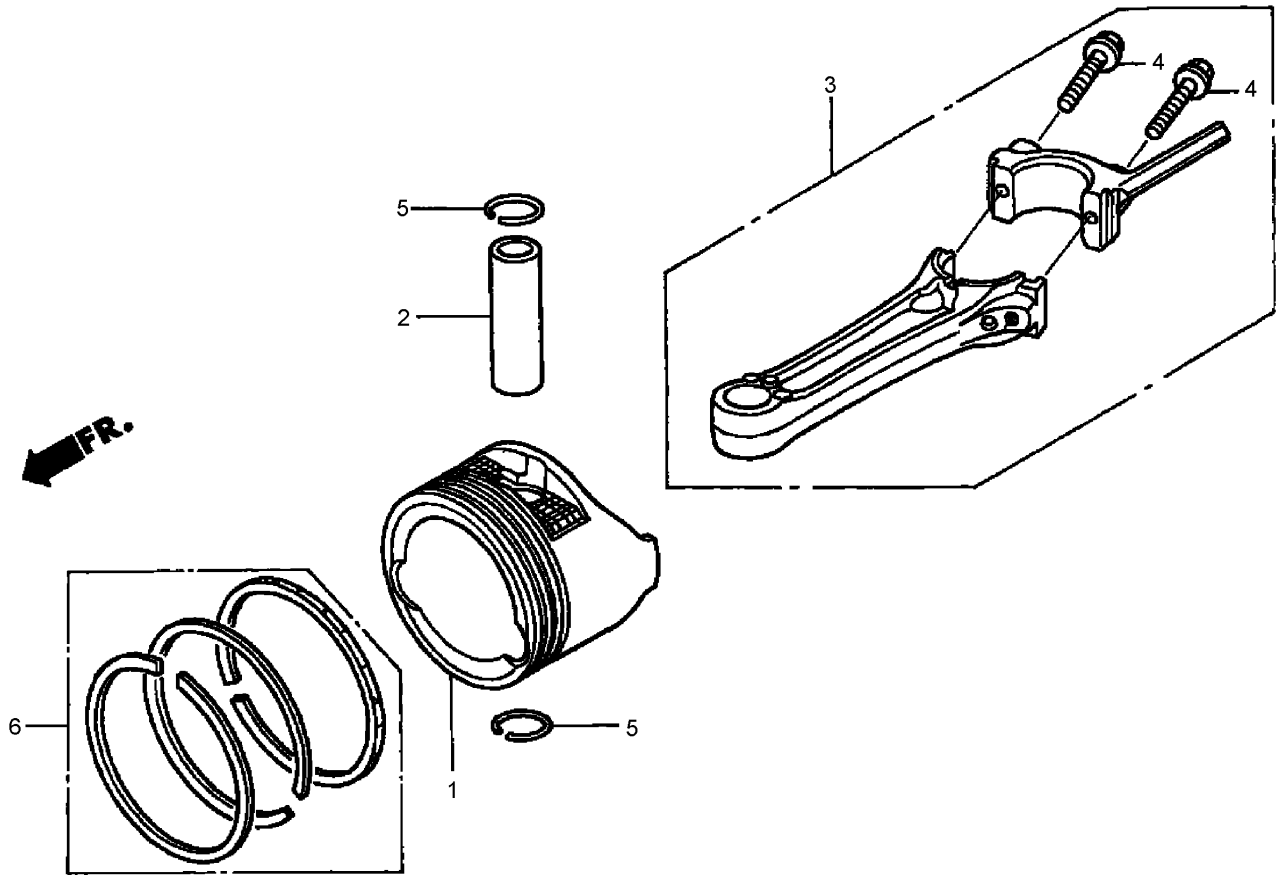
Ref	Part No.	Qty.	Description
16	90121-952-000	8	Bolt-Flange (6X25) (C T 200)
17	90451-ZE1-000	1	Washer-Thrust (6Mm)
18	90602-ZE1-000	1	Clip-Holder, Governor
19	91202-ZL8-003	1	Seal-Oil (28X41.25X6)
20	91303-KF0-003	1	O-Ring (14.8X2.4) (Arai)
20	91356-MA6-005	1	O-Ring (14.8X24) (N O K)
21	94101-06800	1	Washer-Plain (6Mm)
22	94251-08000	1	Pin-Lock (8Mm)
23	94301-08200	2	Pin-Dowel (8X20)



Crankshaft Assembly Honda GCV160A NBL1

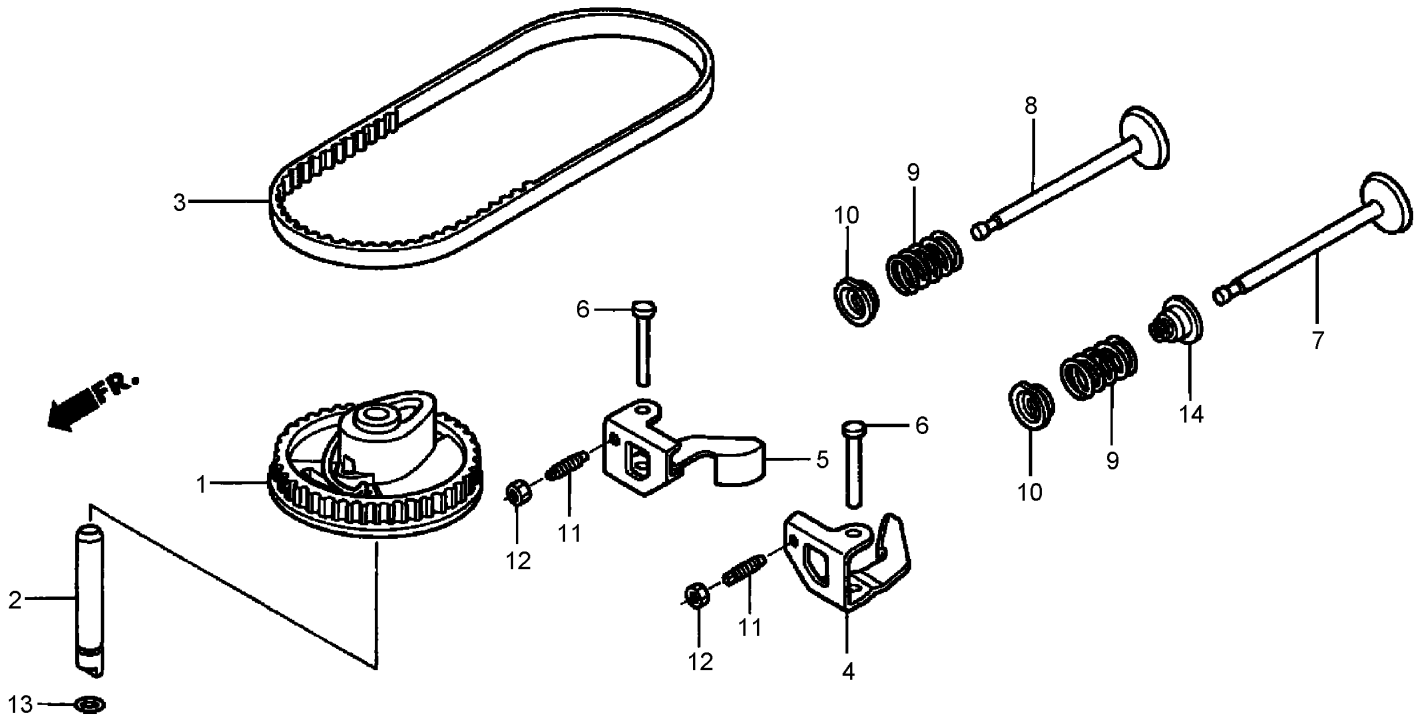
Ref	Part No.	Qty.	Description
●5	90402-ZL8-000	1	Washer-Thrust
●10	13310-Z0L-S20	1	Crankshaft

--	--	--	--



Piston and Connecting Rod Assembly Honda GCV160A NBL1

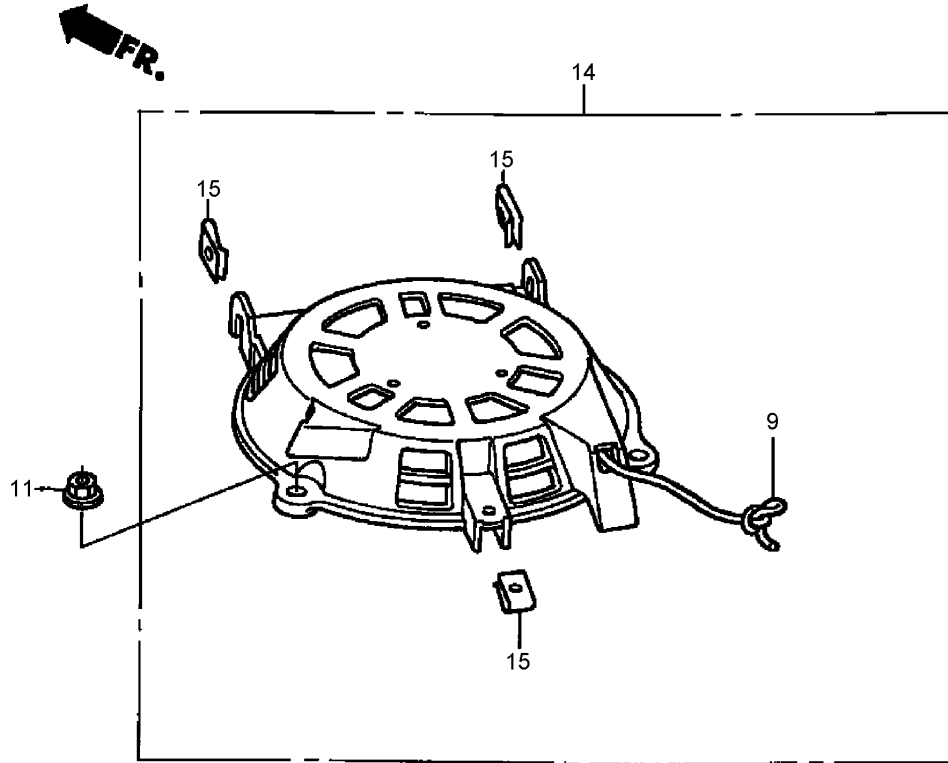
Ref	Part No.	Qty.	Description				
❶	13101-ZL8-000	1	Piston				
❷	13111-ZE0-000	1	Pin-Piston				
❸	13200-ZL8-000	1	Connecting Rod ASM				
❹	90001-ZE1-000	2	Bolt-Rod, Connecting				
❺	90551-ZE0-000	2	Clip-Pin, Piston (13Mm)				
❻	13010-ZL8-003	1	Ring Set-Piston (Riken)				
❻	13010-ZL8-024	1	Ring Set-Piston (Teikoku)				



Camshaft Pulley Assembly Honda GCV160A NBL1

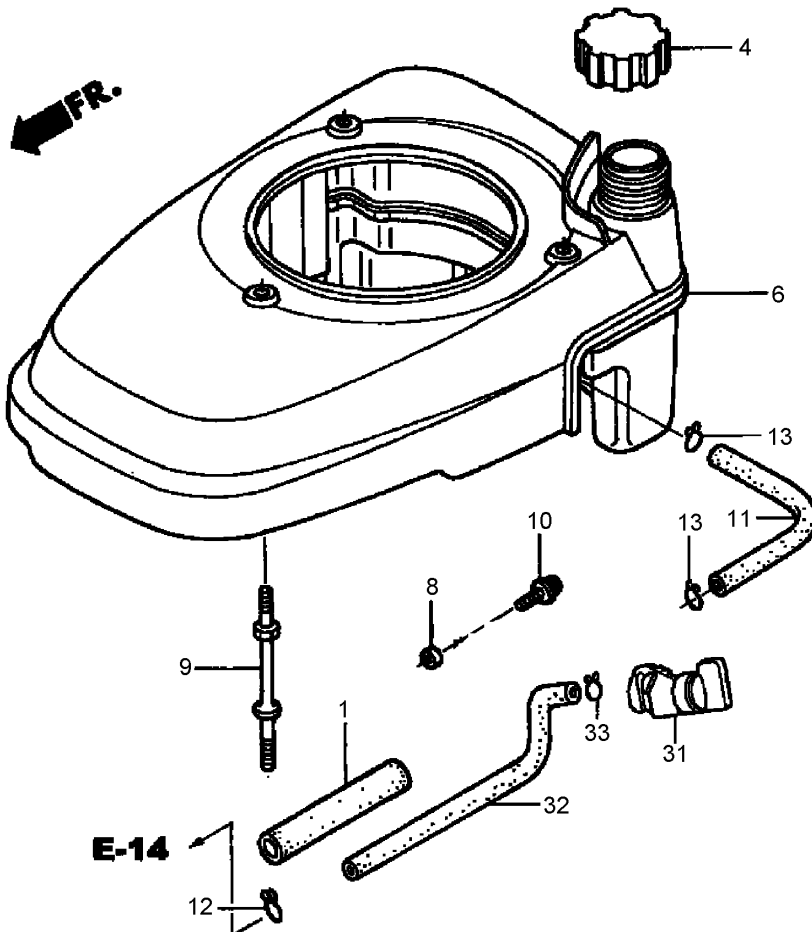
Ref	Part No.	Qty.	Description
❶	14320-ZL8-010	1	Pulley-Camshaft
❷	14324-ZL8-000	1	Shaft-Pulley, Cam
❸	14400-Z0J-014	1	Belt-Timing (84H U7 G-200)
❹	14431-Z0J-000	1	Arm-Rocker, Intake Valve
❺	14441-Z0J-000	1	Arm-Rocker, Exhaust Valve
❻	14461-ZL8-000	2	Shaft-Arm, Rocker
❼	14711-Z0J-000	1	Valve-Intake (Rocknel)
❽	14721-ZL8-000	1	Valve-Exhaust
❾	14751-ZL8-000	2	Spring-Valve
❿	14771-Z0J-000	2	Retainer-Spring, Valve
⓫	90012-333-000	2	Screw-Adjusting, Tappet
⓬	90206-001-000	2	Nut-Adjusting, Tappet
⓭	91301-ZM0-V31	1	O-Ring (6.8X19) (Arai)

Ref	Part No.	Qty.	Description
⓮	12209-ZM0-003	1	Seal-Stem, Valve



Recoil Starter Assembly Honda GCV160A NBL1

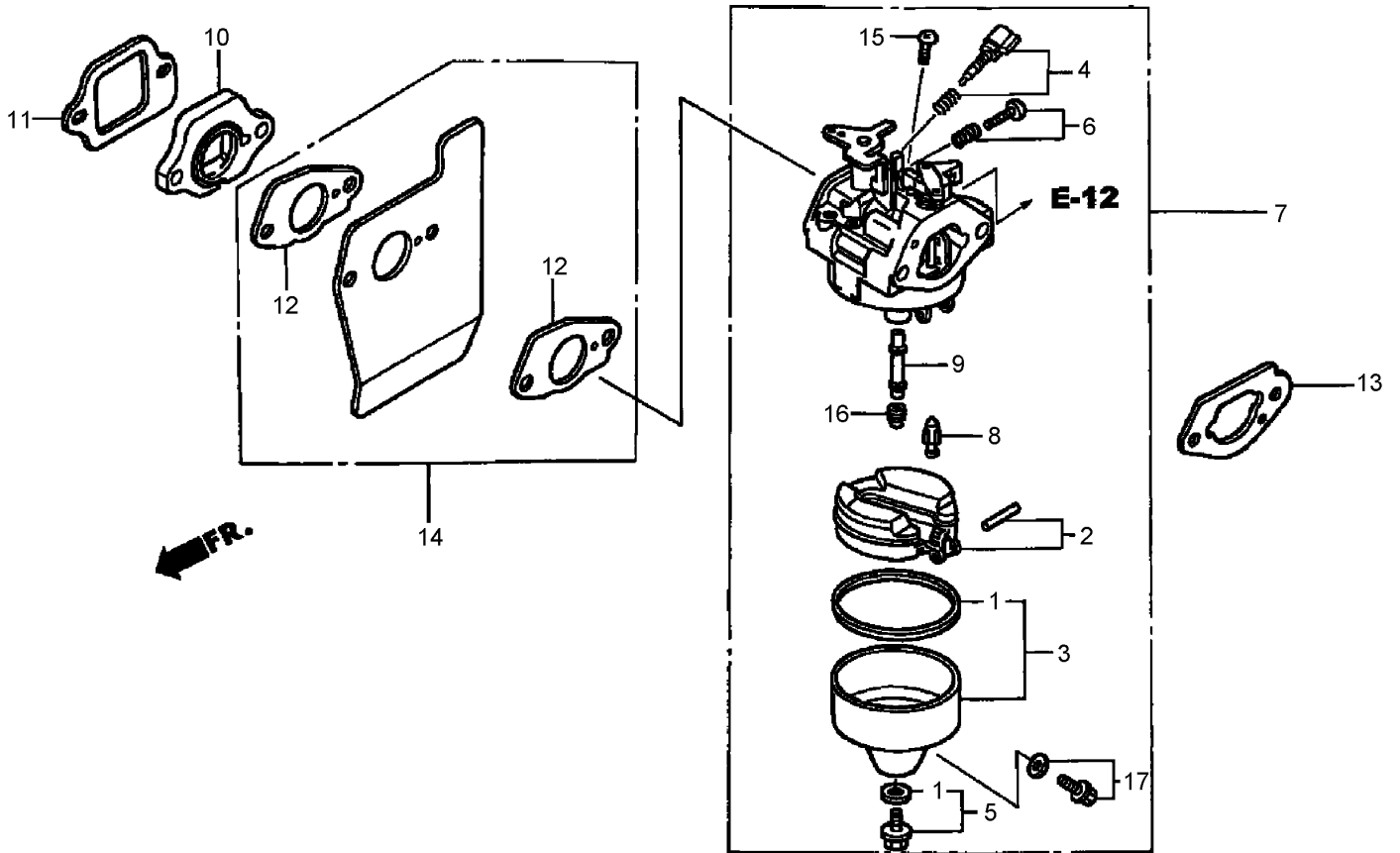
Ref	Part No.	Qty.	Description				
9	28462-Z0L-V71	1	Rope-Starter, Recoil				
11	90201-ZM0-000	3	Nut-Flange (6Mm)				
14	28400-Z0L-V72	1	Recoil Starter ASM				
15	66871-KY2-700	3	Nut-Cowl				



Fan Cover Assembly Honda GCV160A NBL1

Ref	Part No.	Qty.	Description
①	16854-ZH8-000	1	Supporter-Rubber (107 Mm)
④	17620-ZL8-013	1	Fuel Tank Cap ASM
⑥	19610-Z0L-000ZA	1	Cover-Fan
⑧	33609-GK4-620	1	Collar-Turn Signal, Front
⑨	90043-ZL8-000	3	Bolt-Stud (H T 42.5Mm)
⑩	93891-05010-08	1	Screw-Washer (5X10)
⑪	95001-55008-60M	1	Fuel-Hose (5.5X8000) (5.5X100)
⑫	95002-02080	1	Clip-Tube (B8)
⑬	95002-02100	2	Clip-Tube (B10)
⑳	16950-ZM0-003	1	Petcock ASM
㉓	17702-ZM0-800	1	Tube-Fuel
㉔	95002-02080	1	Clip-Tube (B8)

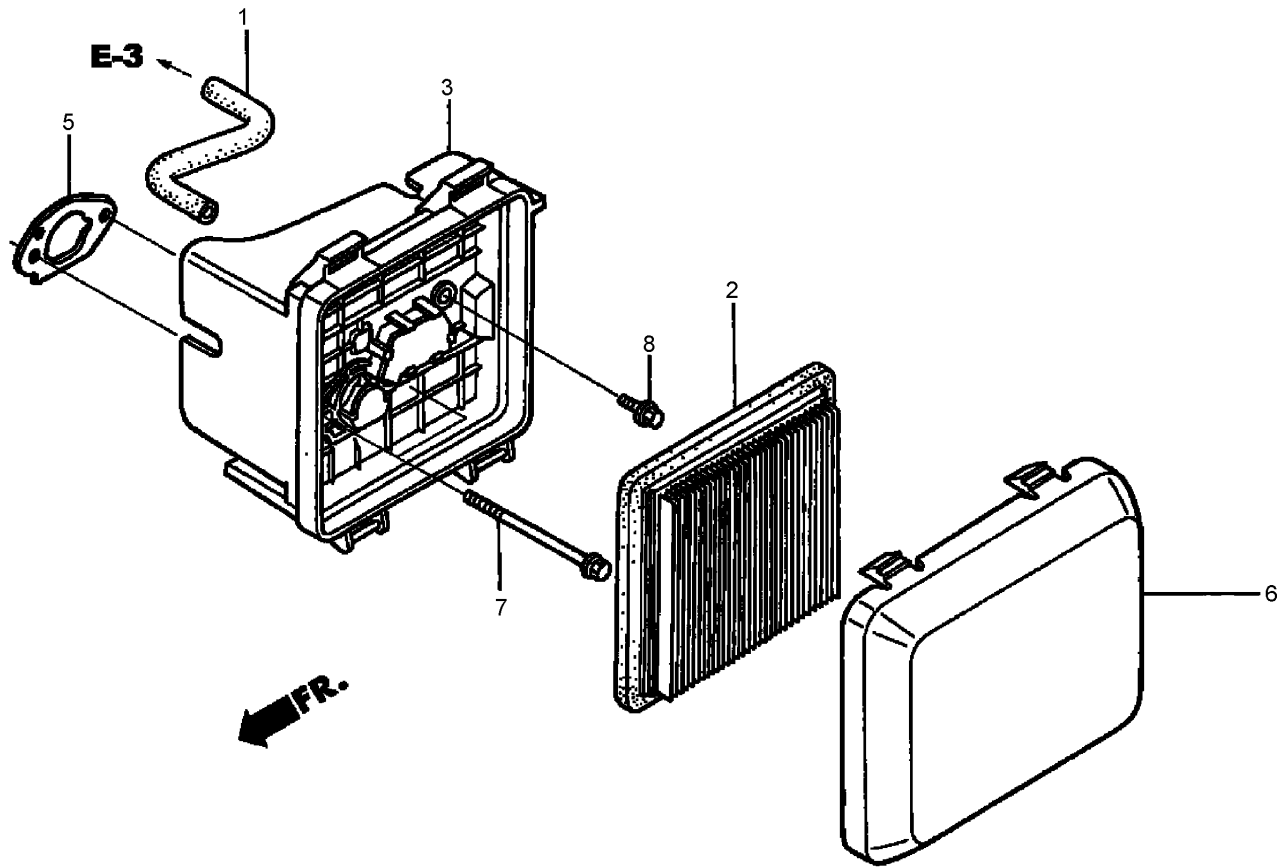
--	--	--	--



Carburetor Assembly Honda GCV160A NBL1

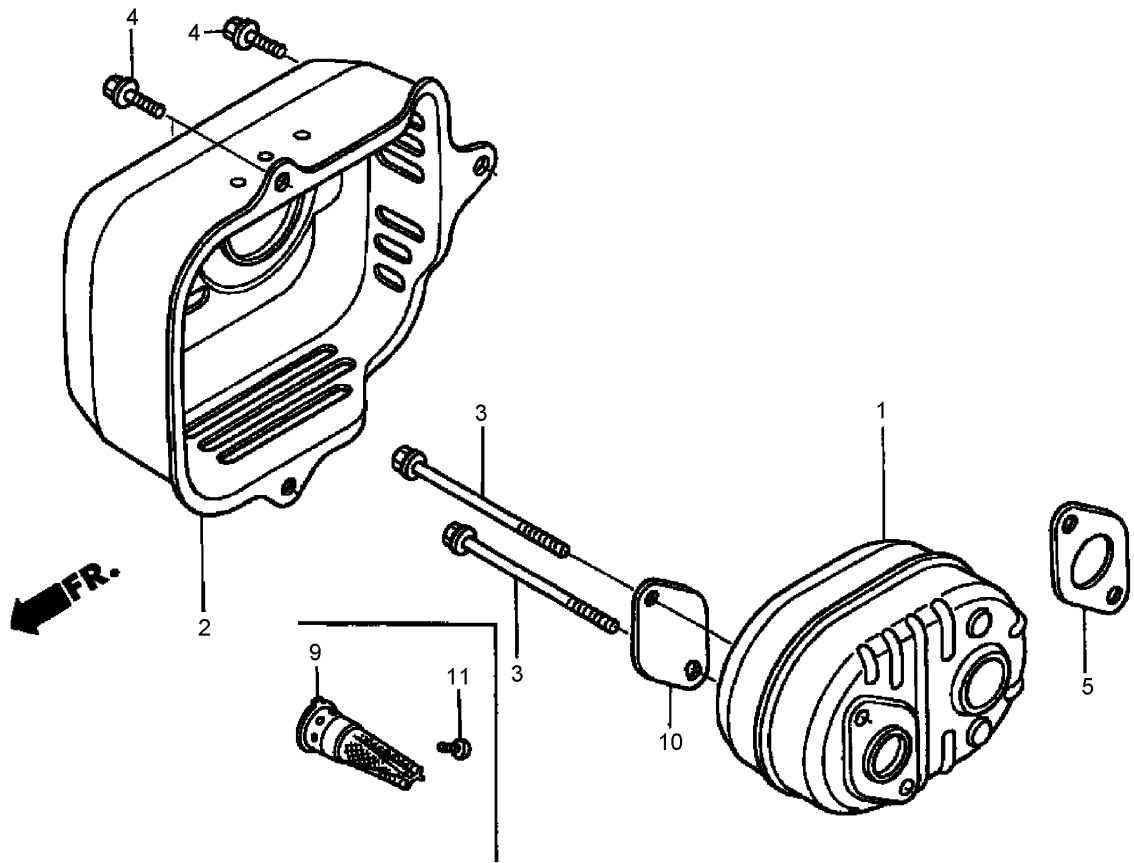
Ref	Part No.	Qty.	Description
❶	16010-883-015	1	Gasket Set
❷	16013-ZL1-003	1	Float Set
❸	16015-887-782	1	Float Chamber Set
❹	16016-ZG0-W00	1	Screw Set
❺	16028-ZE0-005	1	Screw Set
❻	16029-ZG0-901	1	Screw Set (Throttle Stop)
❼	16100-ZM0-804	1	Carburetor ASM (Bb62B E)
❽	16155-ZM0-013	1	Valve-Float
❾	16166-ZM0-003	1	Nozzle-Main
❿	16211-ZL8-000	1	Insulator-Carburetor
⓫	16212-ZL8-000	1	Gasket-Insulator
⓬	16221-883-800	2	Gasket-Carburetor
⓭	16228-ZL8-000	1	Gasket-Carburetor

Ref	Part No.	Qty.	Description
⓮	19650-ZM0-000	1	Guide-Air
⓯	93500-05006-0H	1	Screw-Pan (5X6)
⓰	99101-124-0600	1	Jet-Main (#60)
⓱	99101-124-0620	1	Jet-Main (No.62)
⓲	99101-124-0650	1	Jet-Main (No.65)
⓳	16024-ZE1-811		Drain Screw Set



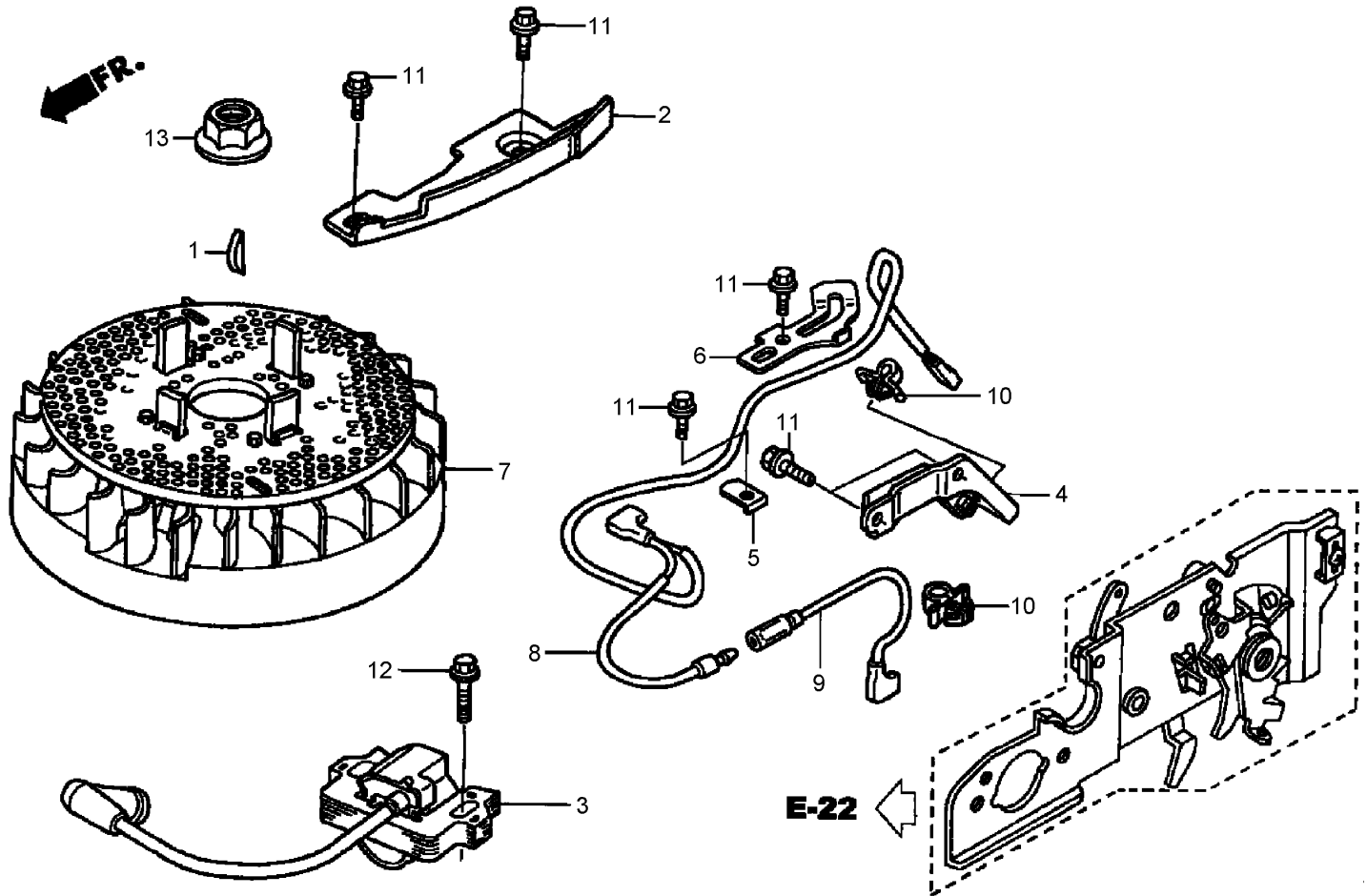
Air Cleaner Assembly Honda GCV160A NBL1

Ref	Part No.	Qty.	Description				
①	15721-ZM0-000	1	Tube-Breather				
②	17211-ZL8-013	1	Element-Cleaner, Air				
③	17220-ZM0-000	1	Air Cleaner Case ASM				
⑤	17228-ZM0-000	1	Gasket-Cleaner, Air				
⑥	17231-Z0L-030	1	Cover-Cleaner, Air				
⑦	90003-ZM0-000	2	Bolt-Flange (6X86) (C T200)				
⑧	95701-06014-08	1	Bolt-Flange (6X14)				



Muffler Assembly Honda GCV160A NBL1

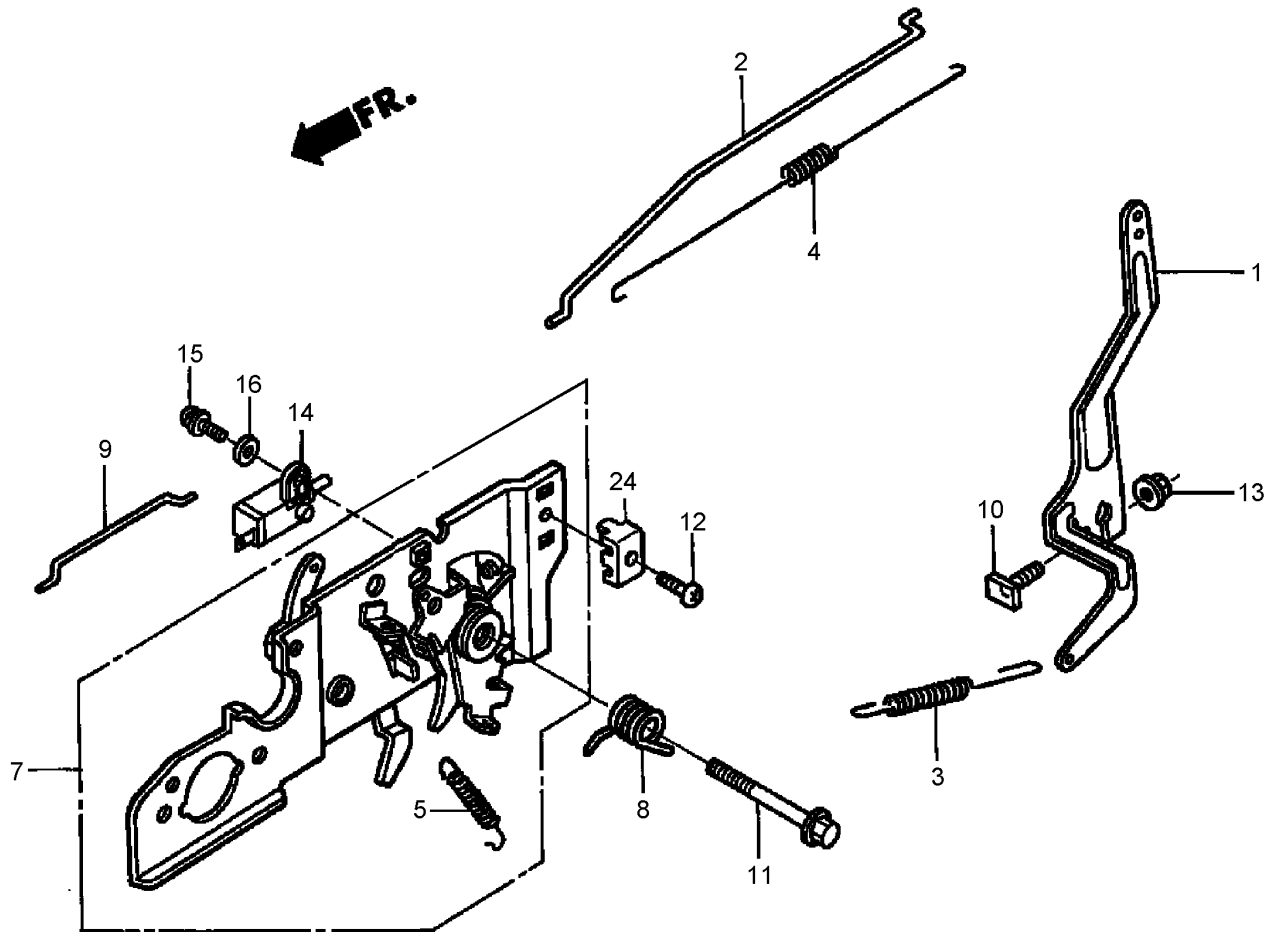
Ref	Part No.	Qty.	Description
❶	18310-ZM0-000	1	Muffler
❷	18321-Z0L-J00	1	Protector-Muffler
❸	90004-ZL8-000	2	Bolt-Flange (6X79) (C T200)
❹	90013-883-000	3	Bolt-Flange (6X12) (C T200)
❺	18381-ZL8-305		Gasket-Muffler
❾	18350-ZL8-000		Arrester-Spark
❿	18356-ZL8-000		Plate-Number, Arrester
⓫	90055-ZE1-000		Screw-Tapping (4X6)



Flywheel Assembly Honda GCV160A NBL1

Ref	Part No.	Qty.	Description
●1	13331-357-000	1	Key-Woodruff, Special (25X18)
●2	19612-ZM0-J20	1	Plate-Side
●3	30500-Z0J-003	1	Ignition Coil ASM (Phelon) (Use For Flywheel Of Phelon)
●4	30547-Z0L-S00	1	Clamp-Wire, Stop Switch
●5	30548-ZL8-000	1	Clamp-Wire, Stop Switch
●6	30549-ZL8-000	1	Clamp-Wire
●7	31105-Z0J-010	1	Flywheel ASM
●8	32195-Z0L-S20	1	Wire-Switch, Stop
●9	32196-Z0L-S20	1	Wire-Switch, Stop
●10	51125-Z0L-003	2	Holder-Wire (Fastex)
●10	90681-959-003	2	Clip A-Cable (Nifco)
●11	90013-883-000	6	Bolt-Flange (6X12) (C T200)
●12	90022-888-010	1	Bolt-Flange (6X20) (C T200)

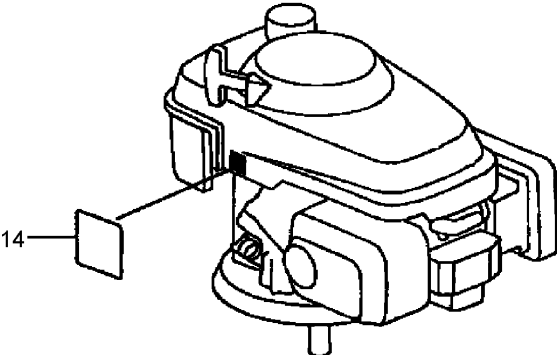
Ref	Part No.	Qty.	Description
●13	90201-878-003	1	Nut-Special (14 Mm)



Control Assembly Honda GCV160A NBL1

Ref	Part No.	Qty.	Description
❶	16551-ZM0-010	1	Arm-Governor
❷	16555-ZM0-000	1	Rod-Governor
❸	16561-Z0L-000	1	Spring-Governor
❹	16562-ZM0-000	1	Spring-Return, Throttle
❺	16576-ZE7-300	1	Spring-Lever
❷	16580-ZM0-J22	1	Base-Control
❸	16593-ZM0-000	1	Spring-Return, Control Lever
❹	16674-ZM0-000	1	Rod-Choke
❺	90015-ZE5-010	1	Bolt-Arm, Governor
❻	90016-ZM0-000	1	Bolt-Flange (6X45) (Ct200)
❼	93500-05016-0A	1	Screw-Pan (5X16)
❽	94050-06000	1	Nut-Flange (6 Mm)
❾	35120-ZL8-003	1	Engine Stop Switch ASM
❿	93892-04012-00	1	Screw-Washer (4X12)

Ref	Part No.	Qty.	Description
❿	94103-04000	1	Washer-Plain (4Mm)
⓫	16617-VG3-000	1	Holder-Cable



**Label Assembly
Honda GCV160A NBL1**

Ref	Part No.	Qty.	Description				
● 14	87594-VG3-010	1	Mark-Caution, Oil				

Attachments and Accessories

For 10797 - Insight Platinum Lawn Mower

Product Name	Model/Part
Lawn Boy Paint	110-8800
Replacement Bag	89815
Rear Bag Kit	89913
21 Inch Blade	89914
Cruise Control Kit	89919
Air Filter	89928
Spark Plug	89947

NOTES

NOTES

