



## TimeCutter™ Z5020 Riding Mower

Model No. 74372 - 270000001 and up.

### Parts Catalog

---

#### Ordering Replacement Parts

To order replacement parts, please supply the part number, the quantity, and the description of each part desired.

#### Understanding Reference Numbers

Each identified part in an illustration has a reference number. The reference number for a part also appears in the parts list, along with other information about the part.

This catalog uses two special reference number formats, one to indicate parts in a service assembly and another to indicate the quantity of a given part in an illustration.

#### Service Assembly Reference Numbers

Parts in service assemblies have reference numbers in the form a:b. The a represents the reference number of the entire service assembly and the b represents a sequential number unique to each part within the service assembly.

For example, a wheel assembly might be identified by reference number 6, the tire by 6:1, the valve by 6:2, and the wheel by 6:3. When you order the assembly identified by reference number 6, you receive all parts identified by reference numbers 6:1, 6:2, and 6:3. However, you may also order any part individually. Reference numbers of this type appear in illustrations and in part lists.

#### Reference Numbers Indicating Quantity

In an illustration, if a reference number indicates more than one part, the reference number has the form nX y. The n represents the quantity of the part, the X is the multiplication symbol, and the y represents the reference number.

For example, in an illustration, the reference number 2X 37 means that two of the parts identified by reference number 37 are indicated.

# Contents

Description	Page	Description	Page
Frame Assembly	..... 3	Oil Pan and Lubrication Assembly Kohler SV720-0029	..... 18
Deck Lift and Seat Support Assembly	..... 4	Head, Valve and Breather Assembly Kohler SV720-0029	..... 19
Seat Assembly	..... 5	Ignition and Electrical Assembly Kohler SV720-0029	..... 20
Control Assembly	..... 6	Blower Housing Assembly Kohler SV720-0029	..... 21
Hydro Drive Assembly	..... 7	Starter Assembly Kohler SV720-0029	..... 22
RH Hyrdo Drive Assembly No. 110-6771	..... 8	Fuel System Assembly Kohler SV720-0029	..... 23
LH Hydro Drive Assembly No. 110-6770	..... 9	Engine Control Assembly Kohler SV720-0029	..... 24
Engine and Clutch Assembly	..... 10	Air Intake and Filtration Assembly Kohler SV720-0029	..... 25
Styling and Fuel System Assembly	..... 11	Exhaust Stud, Gasket and Decal Assembly Kohler SV720-0029	..... 26
50 Inch Deck and Side Discharge Assembly	..... 12	Attachments and Accessories List	..... 27
50 Inch Deck Assembly No. 110-6790	..... 13		
50in Deck Spindle and Belt Drive Assembly	..... 14		
Electrical Assembly	..... 15		
Crankshaft Assembly Kohler SV720-0029	..... 16		
Crankscase Assembly Kohler SV720-0029	..... 17		

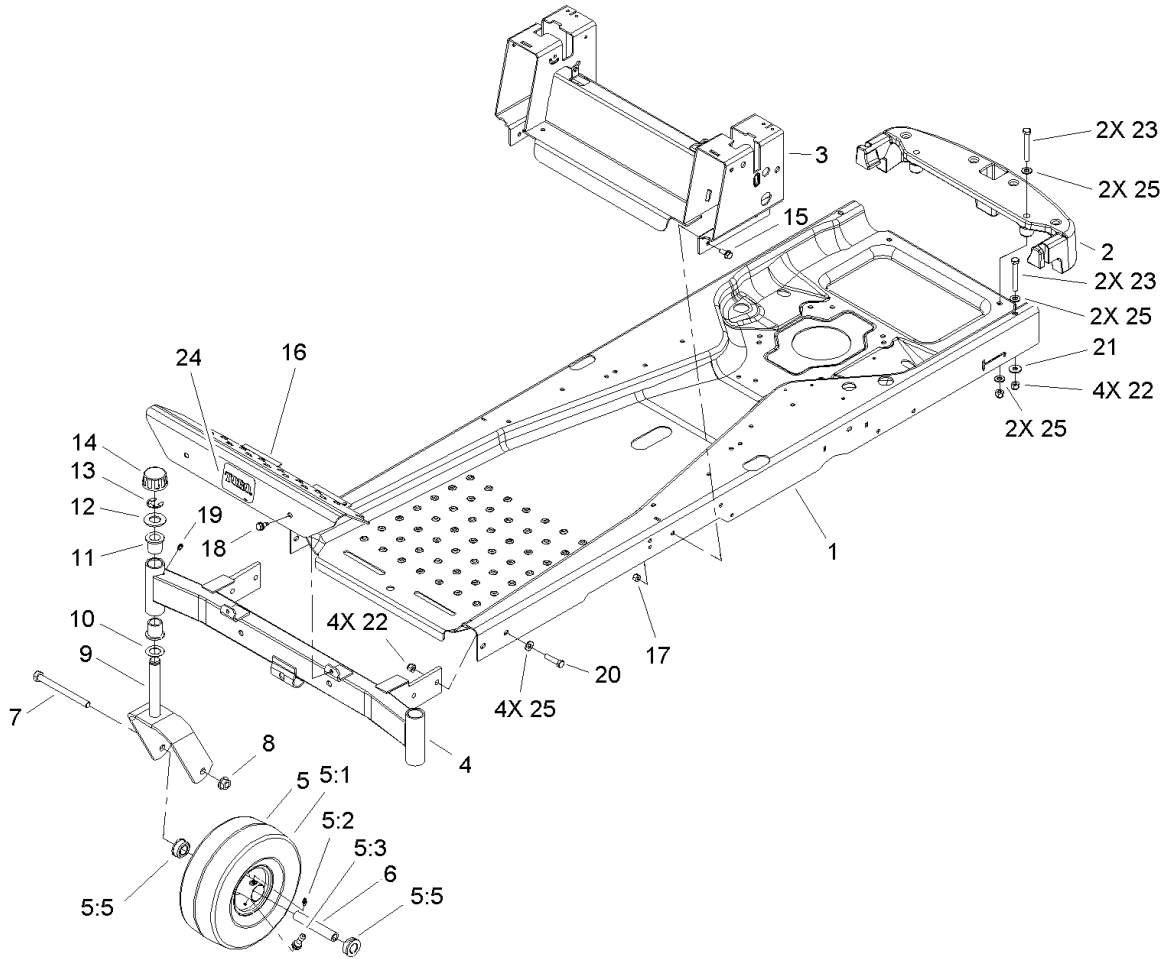
## Part Description Abbreviations

Part descriptions in this catalog may include the following abbreviations.

AR. .... as required	HYD. .... hydraulic
ASM. .... assembly	LH. .... left hand
BBC. .... blade brake clutch	NI. .... nylon insert
CARR. .... carriage	NPTF. .... national pipe thread fine
DEG. .... degrees	PFH. .... phillips flat head
EXT. .... external	PPH. .... phillips pan head
FH. .... flat head	PPHTF. .... phillips pan head thread forming
GA. .... gauge	PRH. .... phillips round head
HD. .... heavy-duty	PTH. .... phillips truss head
HF. .... hex flange	PTO. .... power-take-off
HH. .... hex head	RH. .... right hand
HHF. .... hex head flange	ROPS. .... roll-over protection system
HHFTF. .... hex head flange thread forming	SFH. .... slotted fillister head
HJ. .... hex jam	SHH. .... slotted hex head
HLH. .... hex lag head	SHWH. .... slotted hex washer head
HOC. .... height-of-cut	SPH. .... slotted pan head
HSBH. .... hex socket button head	SQH. .... square head
HSFH. .... hex socket flat head	SRH. .... slotted round head
HSH. .... hex socket head	STD. .... standard
HWH. .... hex washer head	TAP. .... self tapping
HWHTF. .... hex washer head thread forming	TTH. .... torx truss head

## Footnotes

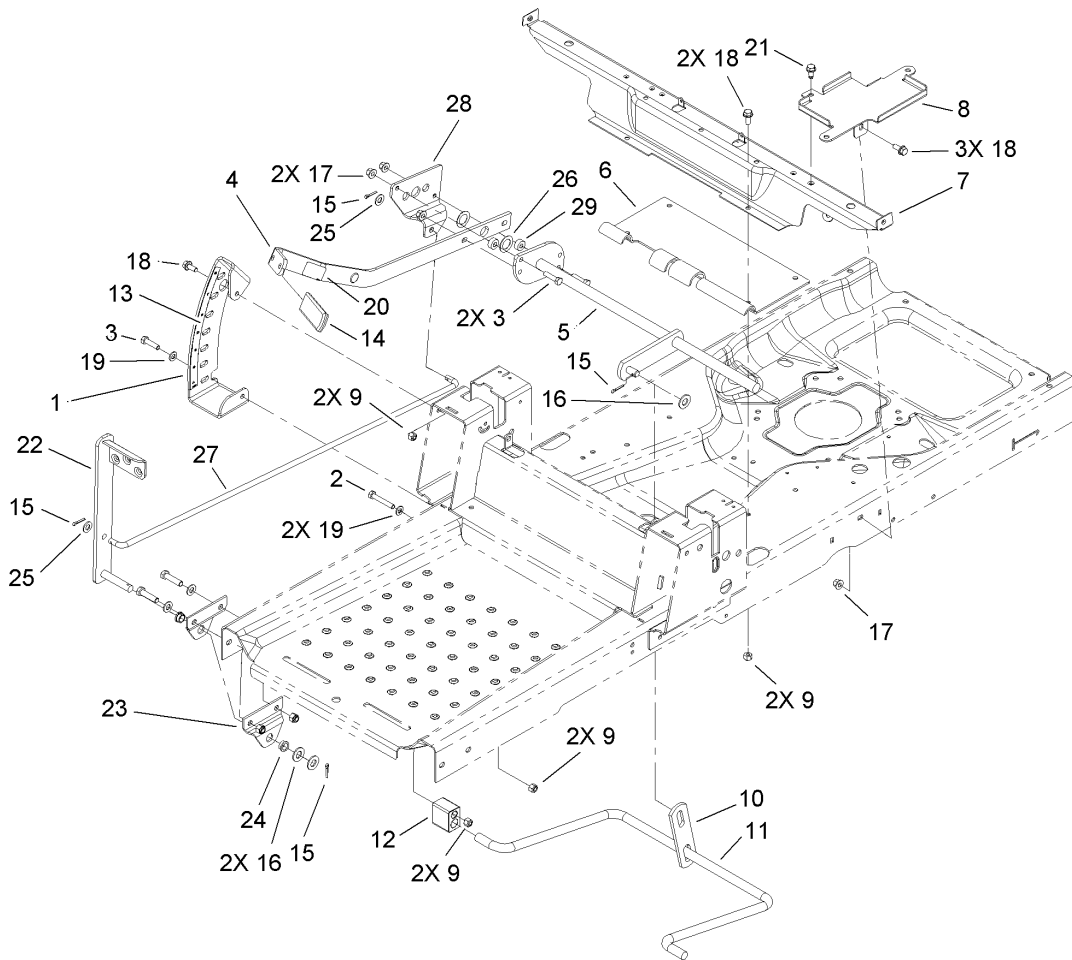
- ❶ Not illustrated
- ❷ Not serviced separately
- ❸ Obtain from your local Kohler dealer



### Frame Assembly

Ref	Part No.	Qty.	Description
1	110-6780-01	1	Frame
2	110-6899-03	1	Bumper-Rear
3	110-6872-03	1	Seat Control ASM
4	108-7882-01	1	Front Axle ASM
5	110-6785	2	Castor Wheel ASM
5:1	110-6791	1	Tire-Smooth
5:2	302-5	1	Fitting-Grease
5:3	232-27	1	Stem-Valve
5:5	114-1640	2	Bushing-Flange
5:99	93-4244	1	Tube-Inner (W/Valve)
6	104-3667	2	Spanner-Wheel
7	325-22	2	Screw-HH
8	32128-23	2	Nut-HF
9	108-7851-01	2	Caster Fork ASM
10	110-6767	2	Washer-Thrust
11	1-303514	4	Bearing-Flanged
12	104-8076	2	Washer
13	32151-103	2	Ring-Retaining, EXT
14	61-9780	2	Cap-Hub
15	3234-47	7	Screw-HHF
16	108-7855-03	1	Footrest
17	3296-29	7	Nut-Lock, NI
18	32104-32	2	Screw-HWH
19	302-5	2	Fitting-Grease

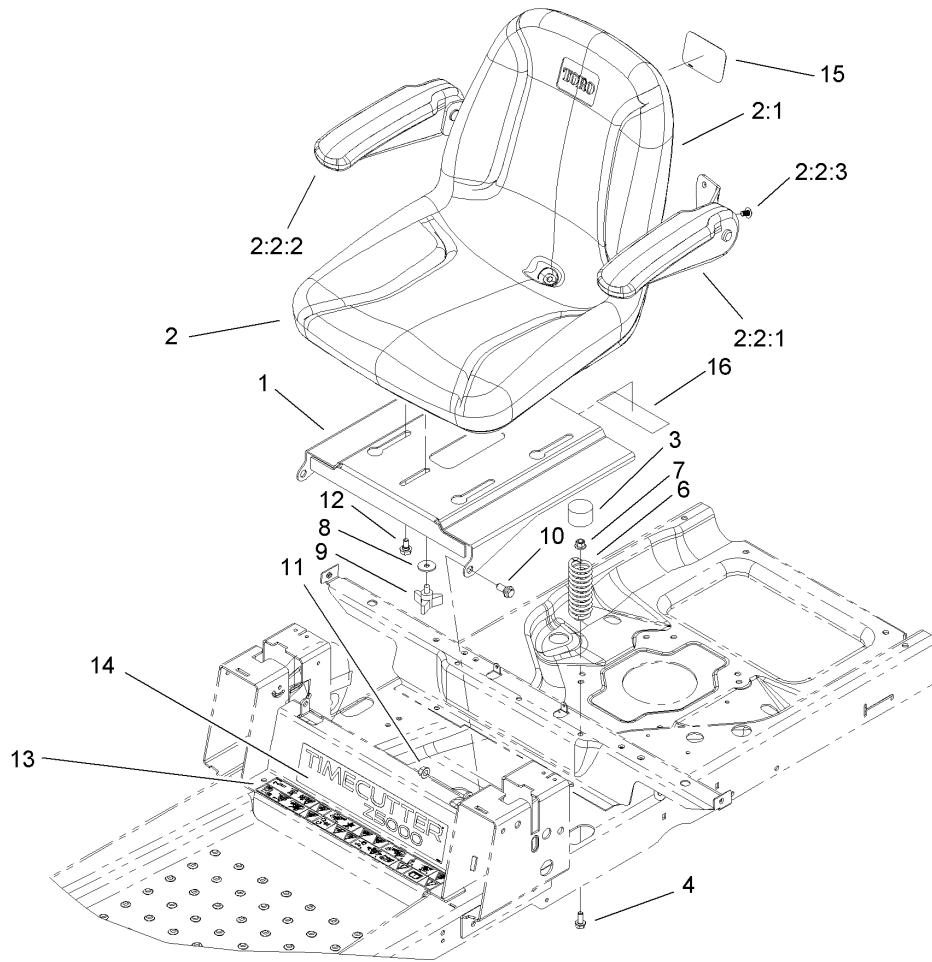
Ref	Part No.	Qty.	Description
20	323-8	4	Screw-HH
21	80-6990	2	Washer-Hardened
22	3296-39	8	Nut-Lock, NI
23	323-13	4	Screw-HH
24	99-2385	1	Decal
25	3256-24	10	Washer-Flat



## Deck Lift and Seat Support Assembly

Ref	Part No.	Qty.	Description
1	112-4027-03	1	Sector-HOC
2	322-10	2	Screw-HH
3	322-6	3	Screw-HH
4	112-3960-03	1	Lift Arm ASM
5	108-7841-03	1	Lift Lever ASM
6	110-6800-03	1	Plate-Lift
7	110-6805-03	1	Bracket-Seat/Pods
8	110-1937-03	1	Tray-Battery
9	3296-29	8	Nut-Lock, NI
10	108-7840	1	Link-Lift
11	108-7839	1	Arm-Lift, Rear
12	108-7845	2	Block-Pivot
13	112-9802	1	Decal-HOC
14	105-3450	1	Grip-Lever, Lift
15	3272-10	4	Pin-Cotter
16	3256-26	3	Washer-Flat
17	3296-58	3	Nut-Lock, NI
18	3234-47	6	Screw-HHF
19	3256-23	3	Washer-Flat
20	106-8743	1	Decal
21	32104-32	1	Screw-HWH
22	112-4018-03	1	Pedal ASM
23	112-3954-03	2	Bracket-Footlift
24	256-156	2	Bushing-Flange

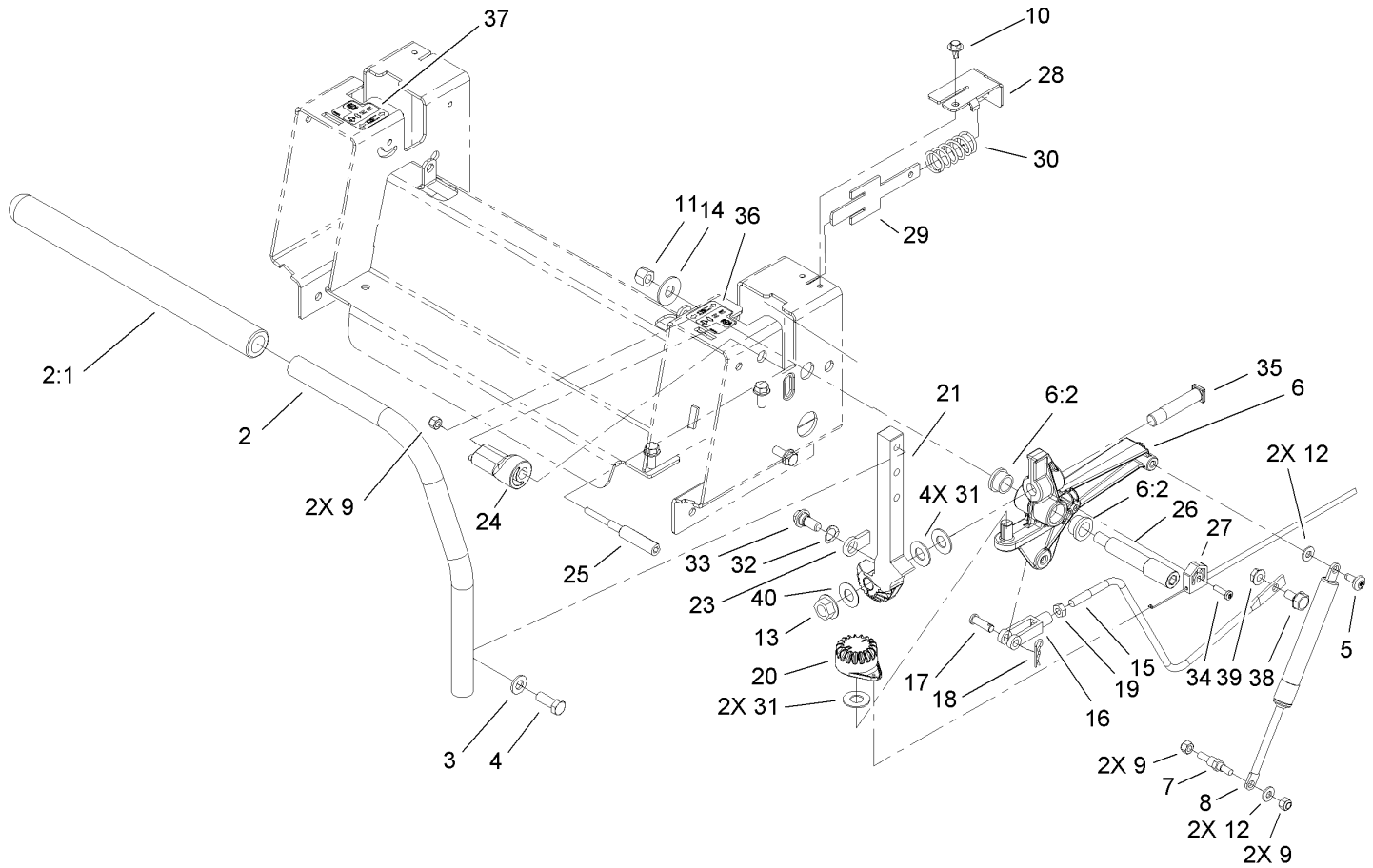
Ref	Part No.	Qty.	Description
25	3256-24	2	Washer-Flat
26	3-6498	2	Washer-Thrust
27	112-3958	1	Rod-Lift
28	112-3959	1	Plate-Footlift
29	112-3961	2	Spacer



## Seat Assembly

Ref	Part No.	Qty.	Description
1	110-6679-03	1	Base-Seat
2	110-6776	1	18 Inch Seat ASM
2:1	110-6772	1	Seat-18 Inch
2:2		1	Armrest Kit
2:2:1	110-6569	1	LH Armrest Kit
2:2:2	110-6570	1	RH Armrest Kit
2:2:3	108-6179	6	Screw-HSBH
3	701178	2	Cap-Protector
4	3234-47	2	Screw-HHF
6	92-7054	2	Spring-Compression
7	3296-58	2	Nut-Lock, NI
8	5-4460	1	Washer-Pivot
9	92-9674	1	Knob
10	94-7582	2	Bolt-Shoulder
11	32128-21	2	Nut-HF
12	37-8771	4	Bolt-Shoulder
13	110-6825	1	Decal-Danger
14	110-6678	1	Decal-Timecutter
15	99-2385	1	Decal
16	106-8717	1	Decal-Service

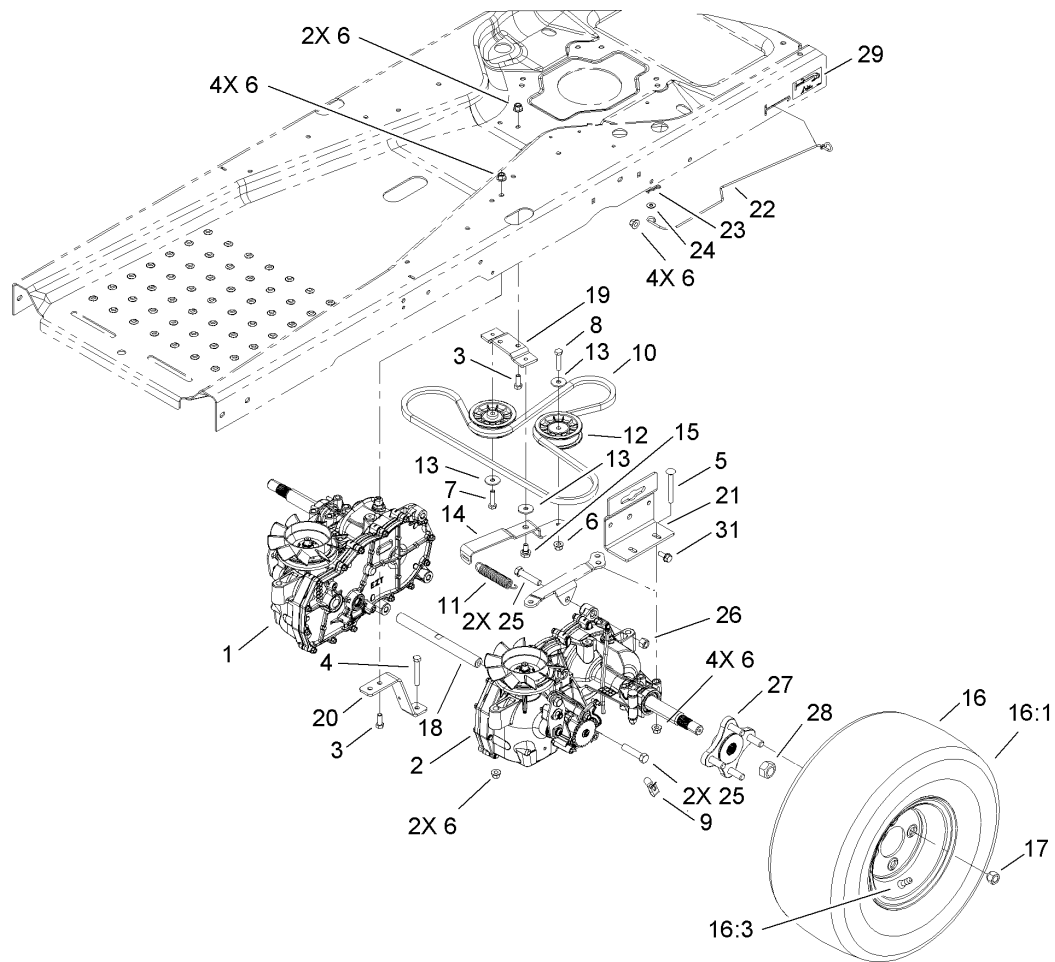
--	--	--	--



## Control Assembly

Ref	Part No.	Qty.	Description
1	110-6814	1	RH Handle ASM
1:1	108-6187	1	Grip
2	110-6815	1	LH Handle ASM
2:1	108-6187	1	Grip
3	3256-24	4	Washer-Flat
4	323-6	4	Screw-HH
5	112-4004	2	Screw-Shoulder
6	110-6828	2	Activator Arm ASM
6:2	105-3455	2	Bushing
7	110-6810	2	Stud-Damper
8	103-2913	2	Damper-Control, Motion
9	3296-42	6	Nut-Lock, NI
10	46-8560	2	Screw-HHF
11	3296-48	2	Nut-Lock, NI
12	3256-22	4	Washer-Flat
13	32128-23	2	Nut-HF
14	3256-5	2	Washer-Flat
15	110-6693	2	Link-Hydro
16	1-303105	2	Yoke-Adjustable
17	1-808280	2	Pin-Clevis
18	1-806003	2	Pin-Hair
19	3220-2	2	Nut-Jam
20	110-6845	2	Gear-Control
21	110-6783	1	Arm-Actuator, LH

Ref	Part No.	Qty.	Description
22	110-6782	1	Arm-Actuator, RH
23	110-6856	2	Tab-Stop
24	110-6873	2	Eccentric
25	110-6874	2	Screw-Eccentric
26	110-6875	2	Bolt-Shoulder
27	110-6858	2	Cable-Brake, Parking
28	110-6751	2	Bracket-Return
29	110-6750	2	Plate-Return
30	110-6752	2	Spring
31	110-6894	6	Washer-Pivot
32	3290-221	2	Washer-Spring
33	94-7582	2	Bolt-Shoulder
34	110-0863	2	Screw-Torx
35	110-6784	2	Bolt-Shoulder
36	112-9750	1	Decal-Control Lever, LH
37	112-9751	1	Decal-Control Lever, RH
38	37-8771	2	Bolt-Shoulder
39	3296-58	2	Nut-Lock, NI
40	112-9771	2	Washer-Teflon



## Hydro Drive Assembly

Ref	Part No.	Qty.	Description
1	110-6771	1	Hydro-RH
2	110-6770	1	Hydro-LH
3	322-4	2	Screw-HH
4	322-11	2	Screw-HH
5	3230-9	4	Screw-CARR
6	3296-58	17	Nut-Lock, NI
7	322-6	1	Screw-HH
8	322-7	1	Screw-HH
9	110-6677	2	Clip-Spring
10	110-6774	1	V-Belt
11	63-1590	1	Spring-Idler
12	110-6775	2	Pulley-Idler
13	5-4460	3	Washer-Pivot
14	110-1925	1	Arm-Idler
15	37-8771	1	Bolt-Shoulder
16	110-6883	2	Wheel And Tire ASM
16:1	110-6887	1	Tire
16:3	232-27	1	Stem-Valve
●16:99	232-37	1	Tube
17	242-50	8	Nut-Lug
18	110-6807	1	Shaft-Cross
19	110-1926	1	Plate-Pivot
20	110-6806-03	2	Strap-Torque
21	110-6878-03	2	Support-Hydro

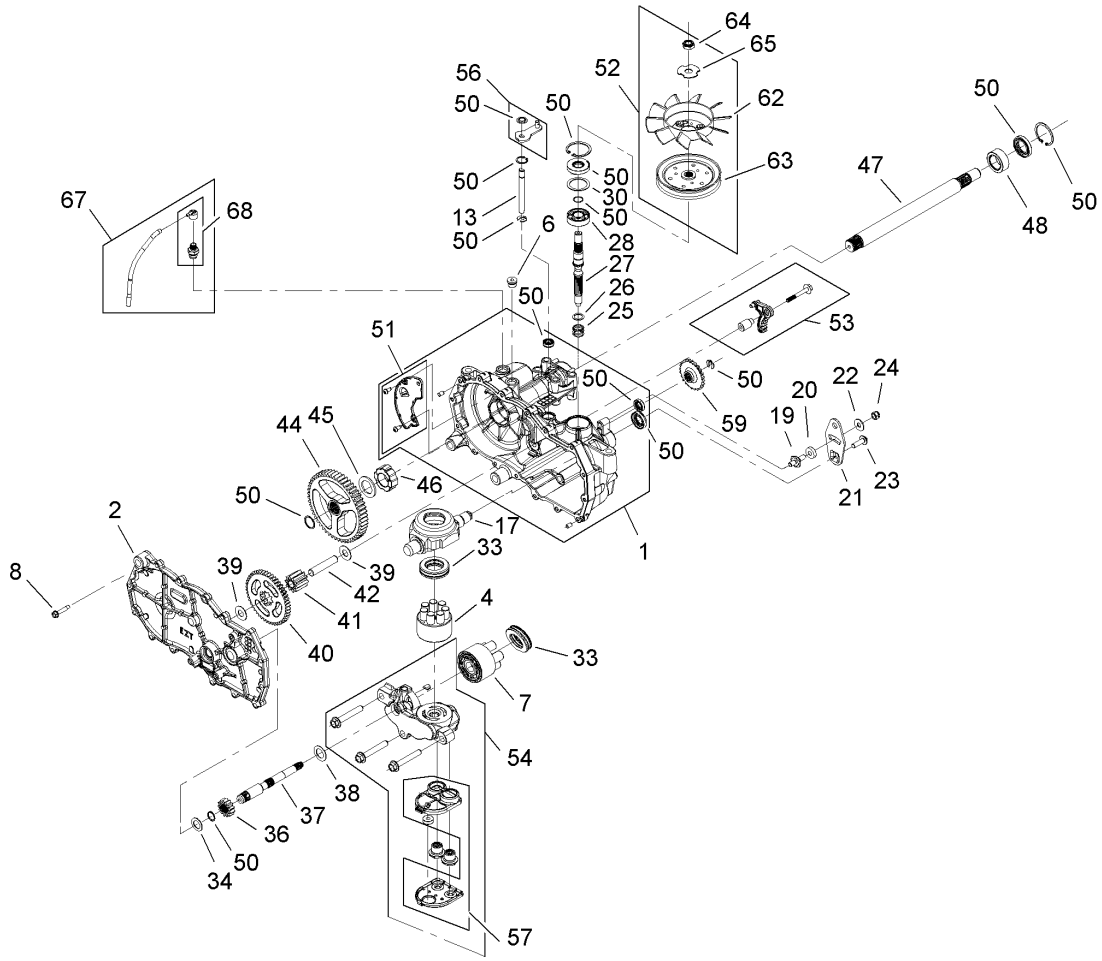
Ref	Part No.	Qty.	Description
22	110-6787	2	Rod-Bypass
23	1-806003	2	Pin-Hair
24	3256-22	2	Washer-Flat
25	324-8	4	Screw-HH
26	3296-48	2	Nut-Lock, NI
27	112-3979	2	Hub ASM
28	112-3982	2	Nut-Lock
29	110-6680	1	Decal-Transport, LH
●30	110-6690	1	Decal-Transport, RH
31	3234-47	8	Screw-HHF



## RH Hydr Drive Assembly No. 110-6771

Ref	Part No.	Qty.	Description
1	114-1630	1	RH Main Housing ASM
2	114-1631	1	RH Side ASM
4	110-8561	1	Pump Block ASM
6	112-9850	1	Plug
7	103-2666	1	Cylinder Block Kit
8	104-5305	16	Screw-HHF
13	106-8678	1	Rod-Bypass
17	104-5304	1	Swashplate-Trunnion
19	104-2116	1	Stud
20	112-9853	1	Puck-Friction
21	106-8747	1	Arm-Control
22	5-4460	1	Washer-Pivot
23	107-2488	1	Screw
24	105-1872	1	Nut
25	94-1936	1	Spring-Block
26	94-1937	1	Washer-Block, Thrust
27	104-5306	1	Shaft-Input
28	104-5311	1	Bearing-Ball
30	104-5308	1	Spacer
33	94-6922	2	Bearing-Thrust
34	104-5339	1	Washer-Flat
36	104-5316	1	Gear-Pinnion, 13T
37	114-1632	1	Shaft, Motor
38	104-5360	1	Washer-Shaft, Motor

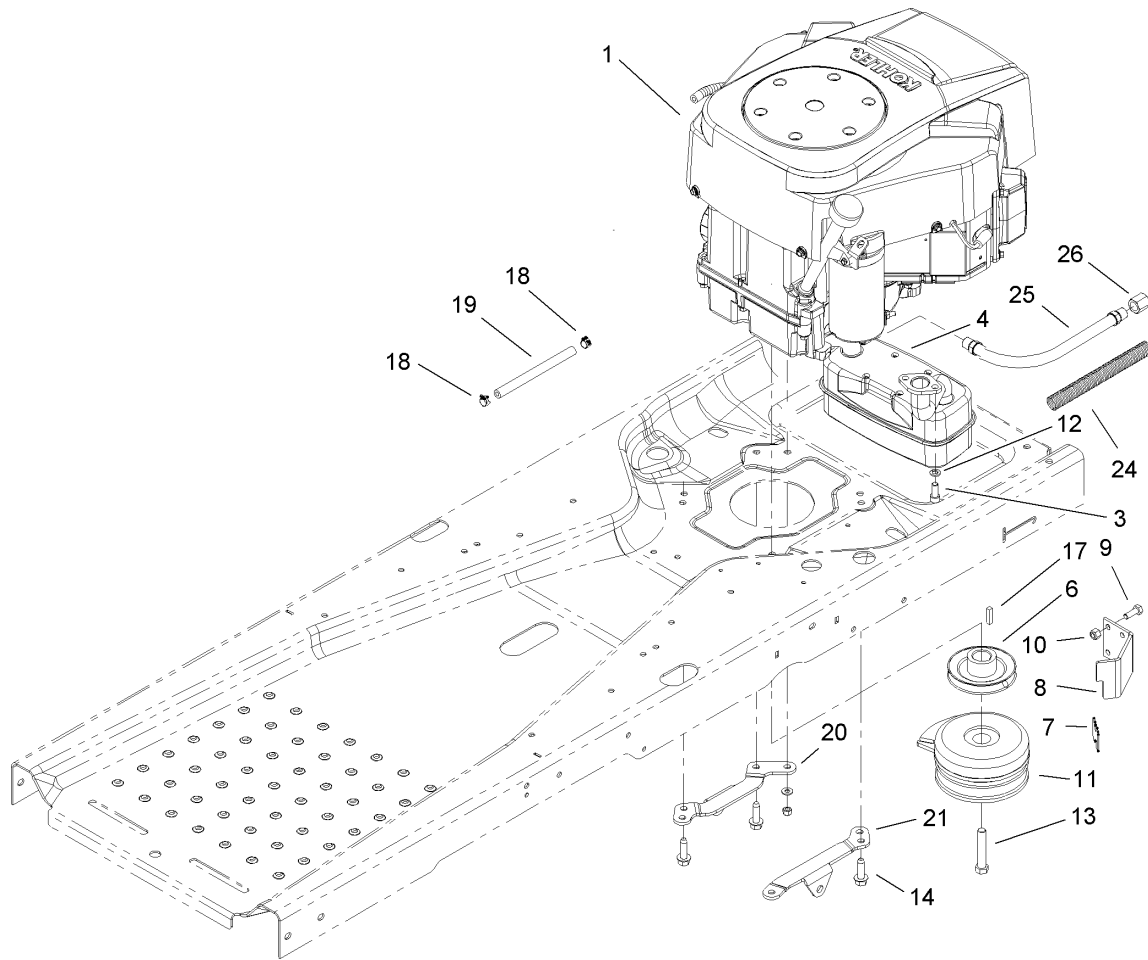
Ref	Part No.	Qty.	Description
39	94-1933	2	Washer
40	104-5317	1	Gear
41	104-5318	1	Gear-Jackshaft, 10T
42	104-5329	1	Pin-Jackshaft
44	112-9855	1	Gear-52T Bull
45	112-9856	1	Washer
46	112-9857	1	Bearing-Sleeve
47	112-9858	1	Shaft-Axle
48	112-9859	1	Bushing-Axle
50	106-8686	1	Seal Kit
51	106-8697	1	RH Expansion Plate Kit
52	106-8698	1	Fan Pulley Kit
53	114-1633	1	Brake Arm Kit
54	112-9861	1	RH Center Section Filter Kit
55	104-2147	1	Sealant
56	107-2489	1	Bypass Arm Kit
57	114-1634	1	Filter Kit
59	106-8694	1	Disc-Brake, Cog
62	110-8566	1	Fan-6 Inch, 10 Blade
63	104-1754	1	Pulley
64	105-1875	1	Nut-Lock
65	107-9122	1	Washer-Slotted
67	112-9866	1	Breather Kit
68	114-1635	1	Breather ASM



## LH Hydro Drive Assembly No. 110-6770

Ref	Part No.	Qty.	Description
1	114-1636	1	LH Main Housing ASM
2	114-1637	1	LH Side ASM
4	110-8561	1	Pump Block ASM
6	112-9850	1	Plug
7	103-2666	1	Cylinder Block Kit
8	104-5305	16	Screw-HHF
13	106-8678	1	Rod-Bypass
17	104-5304	1	Swashplate-Trunnion
19	104-2116	1	Stud
20	112-9853	1	Puck-Friction
21	106-8747	1	Arm-Control
22	5-4460	1	Washer-Pivot
23	107-2488	1	Screw
24	105-1872	1	Nut
25	94-1936	1	Spring-Block
26	94-1937	1	Washer-Block, Thrust
27	104-5306	1	Shaft-Input
28	104-5311	1	Bearing-Ball
30	104-5308	1	Spacer
33	94-6922	2	Bearing-Thrust
34	104-5339	1	Washer-Flat
36	104-5316	1	Gear-Pinnion, 13T
37	114-1632	1	Shaft, Motor
38	104-5360	1	Washer-Shaft, Motor

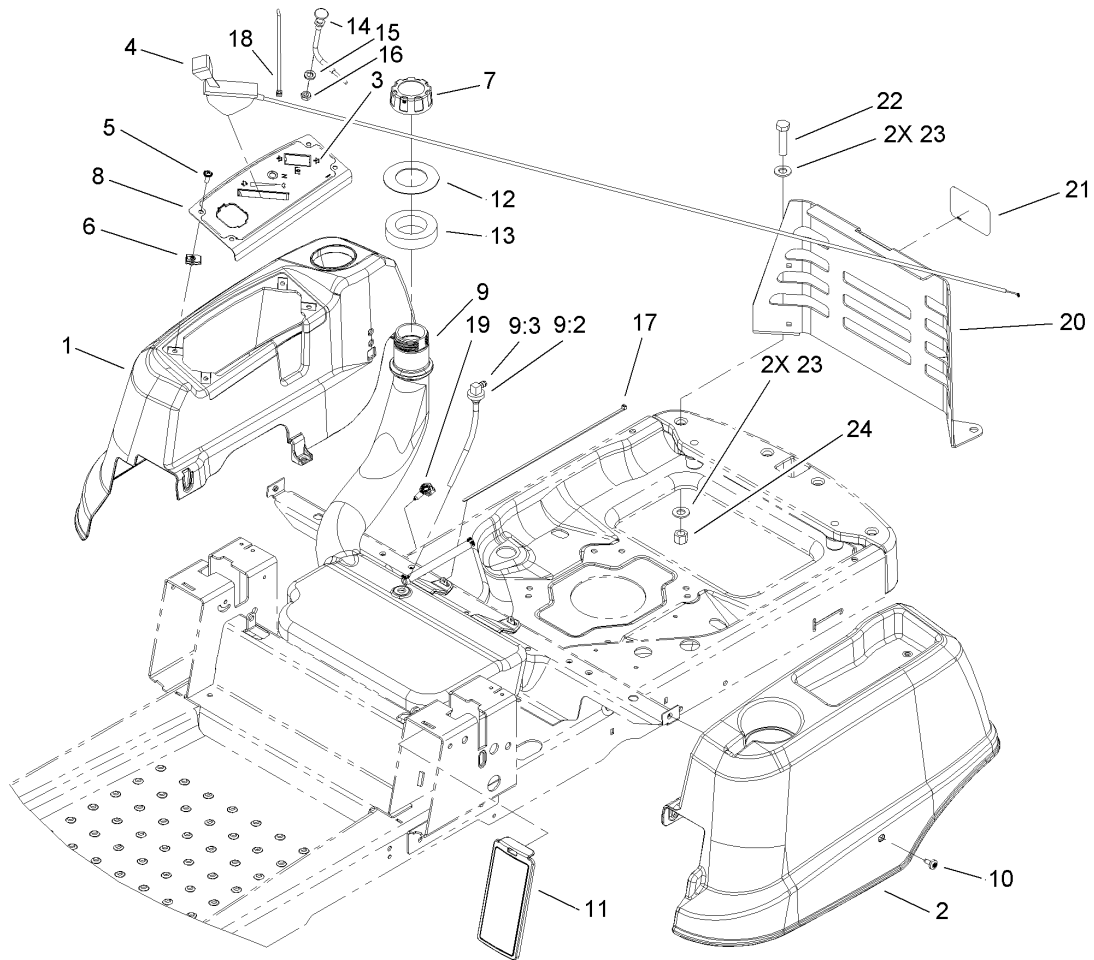
Ref	Part No.	Qty.	Description
39	94-1933	2	Washer
40	104-5317	1	Gear
41	104-5318	1	Gear-Jackshaft, 10T
42	104-5329	1	Pin-Jackshaft
44	112-9855	1	Gear-52T Bull
45	112-9856	1	Washer
46	112-9857	1	Bearing-Sleeve
47	112-9858	1	Shaft-Axle
48	112-9859	1	Bushing-Axle
50	106-8686	1	Seal Kit
51	106-8687	1	LH Expansion Plate Kit
52	106-8698	1	Fan Pulley Kit
53	114-1633	1	Brake Arm Kit
54	112-9862	1	LH Center Section Filter Kit
55	104-2147	1	Sealant
56	107-2489	1	Bypass Arm Kit
57	114-1634	1	Filter Kit
59	106-8694	1	Disc-Brake, Cog
62	110-8566	1	Fan-6 Inch, 10 Blade
63	104-1754	1	Pulley
64	105-1875	1	Nut-Lock
65	107-9122	1	Washer-Slotted
67	112-9866	1	Breather Kit
68	114-1635	1	Breather ASM



## Engine and Clutch Assembly

Ref	Part No.	Qty.	Description
1		1	Engine-Kohler, Sv720-0029
3	3274-10	4	Screw-HSH
4	108-7875	1	Muffler
6	110-6758	1	Pulley-Engine
7	112-3974	1	Bumper
8	110-6896	1	Stop-Clutch
9	322-4	2	Screw-HH
10	3296-29	2	Nut-Lock, NI
11	110-6766	1	Clutch-Electric, PTO
12	3253-4	4	Washer-Lock
13	3212-11	1	Screw-HH
14	32144-109	4	Screw
17	5-7280	1	Key
18	2412-98	2	Clamp
19	107-0589	1	Hose-Fuel
20	110-6798	1	Support-Hydro, RH
21	110-6799	1	Support-Hydro, LH
24	112-9849	1	Tubing-Convoluted
25	82-4201	1	HYD Hose ASM
26	288-10	1	Cap-Pipe

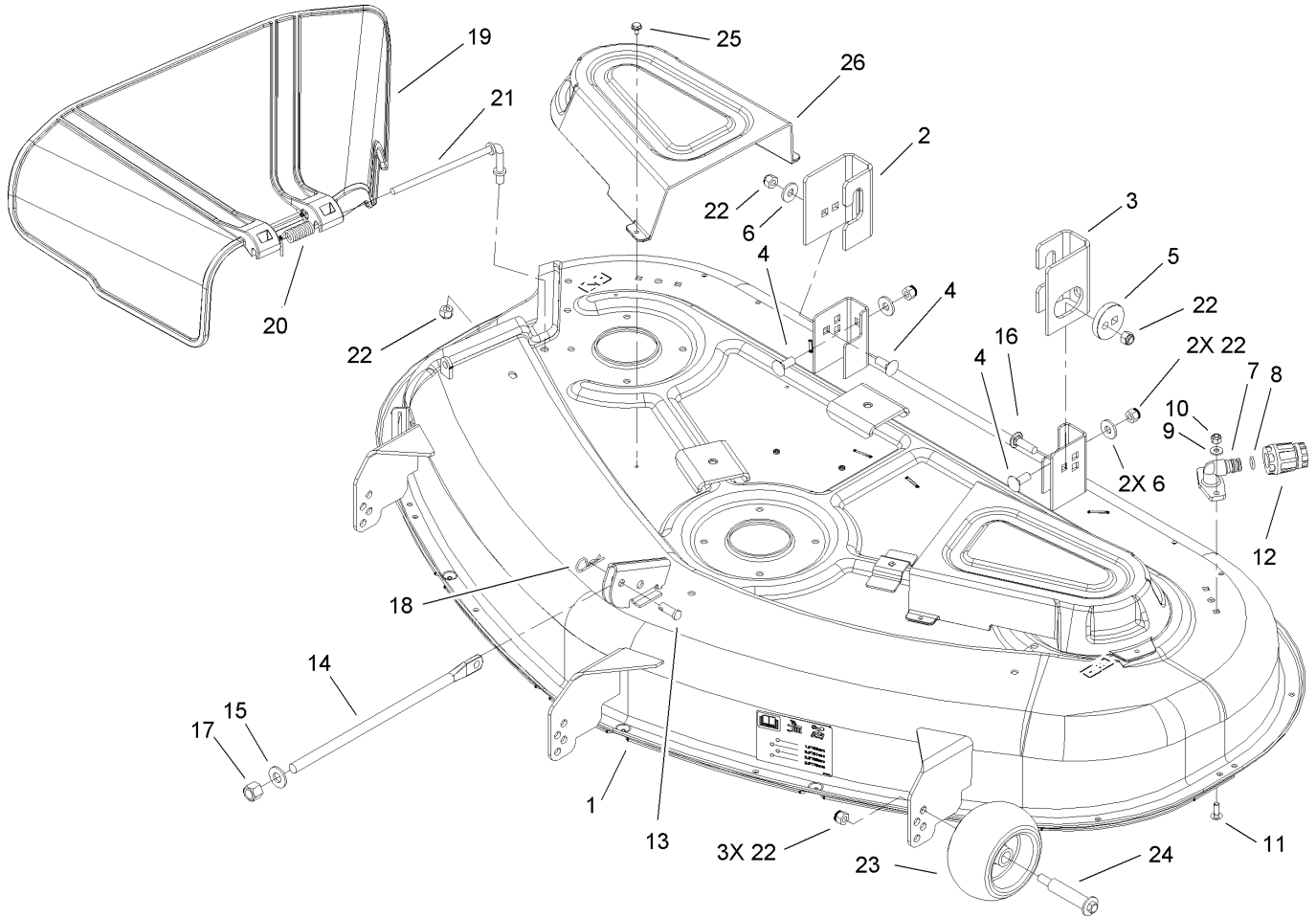
--	--	--	--



## Styling and Fuel System Assembly

Ref	Part No.	Qty.	Description
1	110-1901	1	Pod-RH
2	110-1902	1	Pod-LH
3	110-6654	1	Decal-Panel, Control
4	110-6653	1	Cable-Throttle
5	3258-166	4	Screw-PRH
6	107069	4	Clip
7	93-7198	1	Gas Cap ASM
8	110-1927-03	1	Panel-Control
9	110-6890	1	Fuel Tank ASM
9:2	46-6560	1	Bushing
9:3	95-3970	1	Fitting-90 Degree
10	112-4004	6	Screw-Shoulder
11	110-6786	2	Cover-Control
12	112-9760	1	Washer-Rubber
13	55-9310	1	Seal-Foam
14	110-6754	1	Cable-Choke
15	3253-21	1	Washer-Lock
16	3220-3	1	Nut-HJ
17	100-9064	1	Tie-Cable
18	614249	1	Strap-Tie
19	32180-037	1	Clip-Harness
20	110-6685-03	1	Support-Cover, Rear
21	99-2385	1	Decal
22	325-8	2	Screw-HH

Ref	Part No.	Qty.	Description
23	3256-26	4	Washer-Flat
24	3296-23	2	Nut-Lock, NI

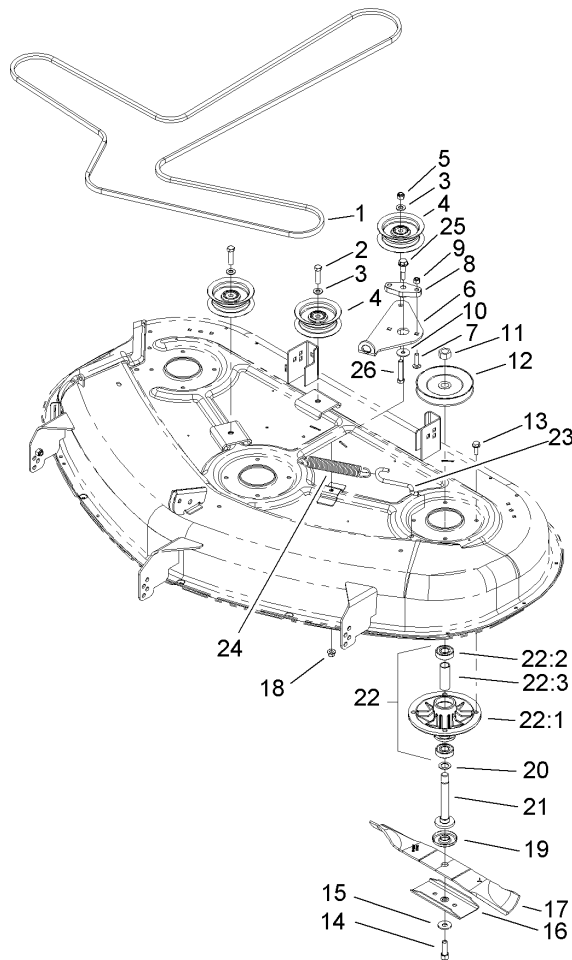


## 50 Inch Deck and Side Discharge Assembly

Ref	Part No.	Qty.	Description
1	110-6790	1	50 Inch Deck ASM
2	108-7836	1	Bracket-Hanger, Right Rear
3	108-7838	1	Bracket-Hanger, Left Rear
4	3231-2	3	Screw-CARR
5	112-3980	1	Eccentric
6	80-6990	3	Washer-Hardened
7	95-2747	2	Fitting-Washout
8	46-6290	2	O-Ring
9	3256-22	4	Washer-Flat
10	3296-42	4	Nut-Lock, NI
11	3229-1	4	Screw-CARR
12	95-3270	1	Connector-Hose
13	1-808284	1	Pin-Clevis
14	108-7847	1	Rod-Lift
15	87-7270	1	Washer-Thrust
16	3231-28	1	Screw-CARR
17	3296-23	1	Nut-Lock, NI
18	9335054	1	Pin-Hair
19	108-7895	1	Deflector-50 Inch
20	110-6694	1	Spring-Torsion
21	112-3950	1	Rod-Pivot
22	3296-39	8	Nut-Lock, NI
23	1-603299	3	Roller-Scalp, Anti
24	112-3977	3	Bolt-Shoulder

Ref	Part No.	Qty.	Description
25	32104-76	6	Screw
26	108-7890	2	Cover-Belt

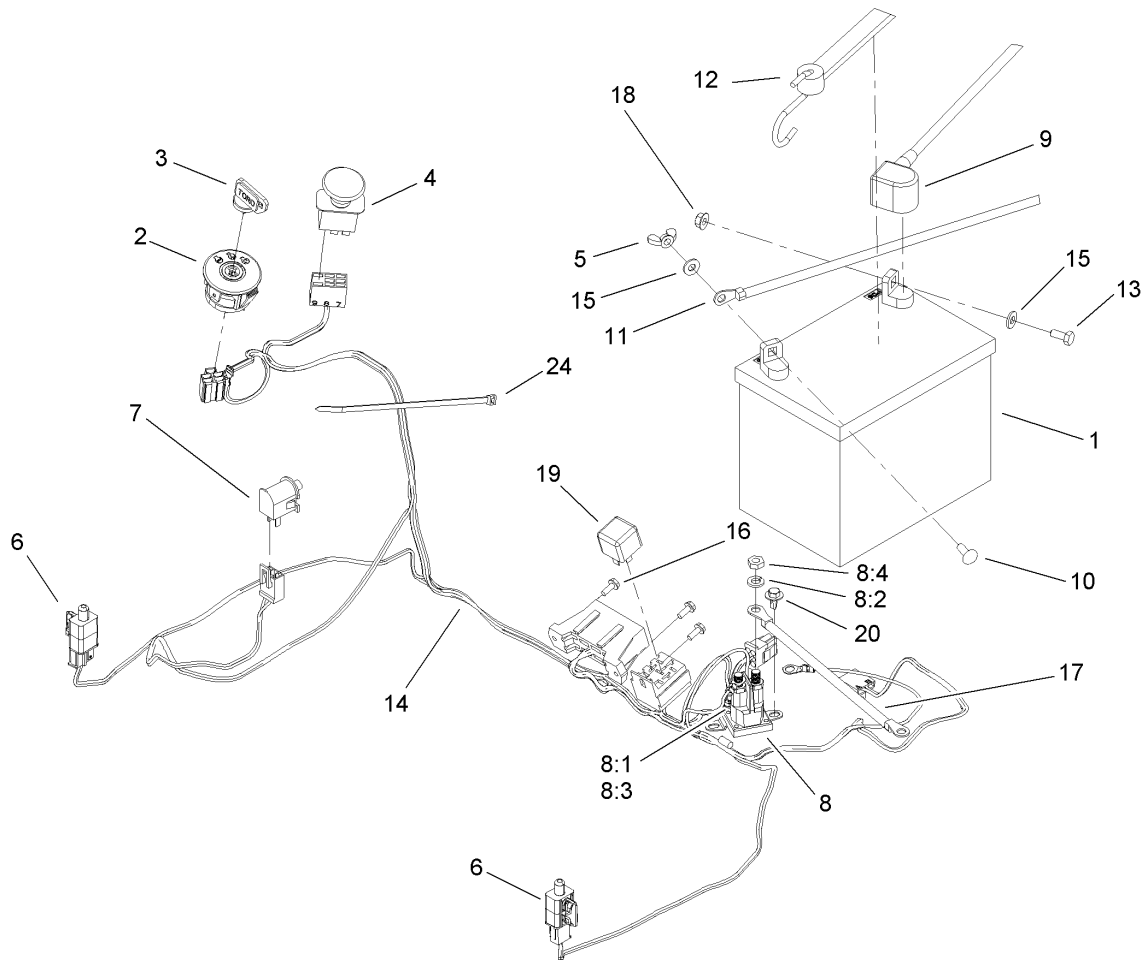




## 50in Deck Spindle and Belt Drive Assembly

Ref	Part No.	Qty.	Description
1	110-6892	1	V-Belt
2	323-8	2	Screw-HH
3	3256-24	3	Washer-Flat
4	106-2175	3	Pulley-Idler, Flat
5	3296-39	1	Nut-Lock, NI
6	110-6867-03	1	Arm-Idler
7	3230-3	2	Screw-CARR
8	108-7881	1	Bushing-Pivot
9	3296-29	2	Nut-Lock, NI
10	5-4460	1	Washer-Pivot
11	3219-6	3	Nut-Hex
12	110-6865	3	Pulley
13	32144-41	12	Screw-Taptite
14	26-0671	3	Screw-Blade
15	3290-465	3	Washer-Belleville
16	106-2248-03	3	Stiffener-Blade
17	110-6837-03	3	Blade-17.5 Inch, High Lift
18	3296-58	1	Nut-Lock, NI
19	80-4360	3	Shield-Bearing
20	80-4380	3	Spacer
21	110-6866	3	Shaft-Spindle
22		3	Spindle ASM
22:1	88-4510	1	Housing-Spindle
22:2	100-1048	2	Bearing-Ball

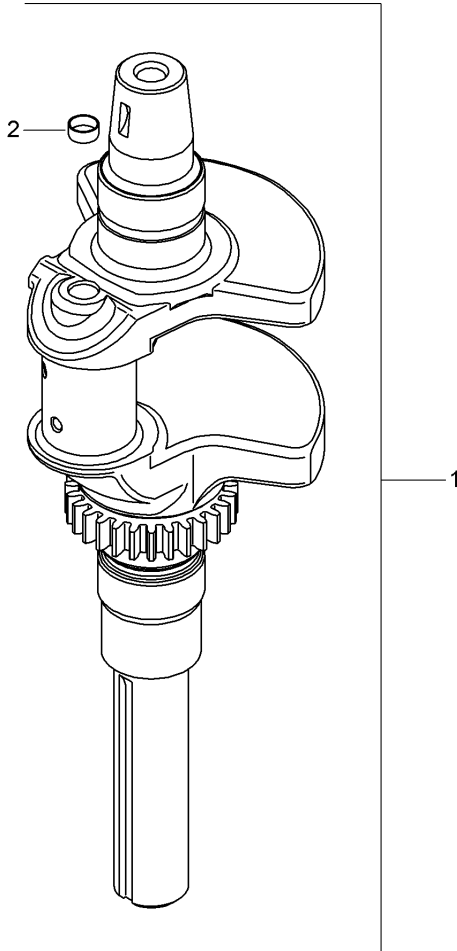
Ref	Part No.	Qty.	Description
22:3	62-3661	1	Spacer-Bearing
23	112-3973	1	Hook-Return, Spring
24	1-603414	1	Spring-Extension
25	110-6897	1	Bolt-Shoulder
26	323-10	1	Screw-HH



## Electrical Assembly

Ref	Part No.	Qty.	Description
1	104-2493	1	Battery
2	110-6764	1	Switch-Ignition
3	63-8360	1	Key-Ignition
4	93-9998	1	Switch-PTO
5	32103-22	1	Nut-Wing
6	110-6765	2	Switch-Single Pole No
7	82-2190	1	Switch-Bail
8	1-513075	1	Switch-Solenoid
8:1	3253-17	2	Washer-Lock
8:2	3253-4	2	Washer-Lock
8:3	3219-14	2	Nut-Hex
8:4	3220-2	2	Nut-Jam
9	110-6794	1	Cable-Battery, Red
10	3229-1	1	Screw-CARR
11	110-6793	1	Cable-Battery, Black
12	104-2466	1	Holddown-Battery
13	321-3	1	Screw-HH
14	110-1923	1	Harness-Wire
15	3256-22	2	Washer-Flat
16	32144-1	3	Screw-Taptite
17	110-6792	1	Cable-Battery, Red
18	32128-33	2	Nut-HF
19	98-7249	1	Relay
20	46-8560	2	Screw-HHF

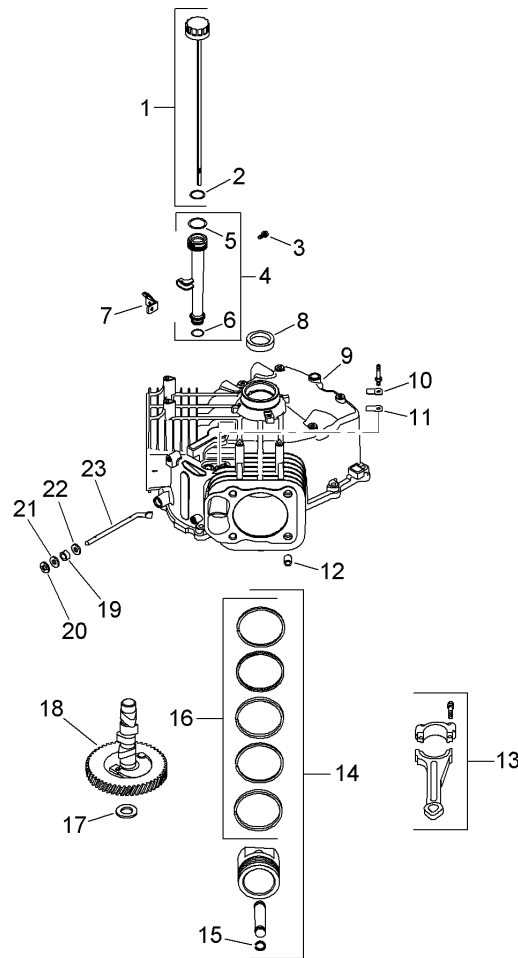
Ref	Part No.	Qty.	Description
24	614249	1	Strap-Tie



## Crankshaft Assembly Kohler SV720-0029

Ref	Part No.	Qty.	Description
1	32 014 04-S	1	Crankshaft ASM (Includes 2)
2	52 139 09-S	1	Plug-Cup

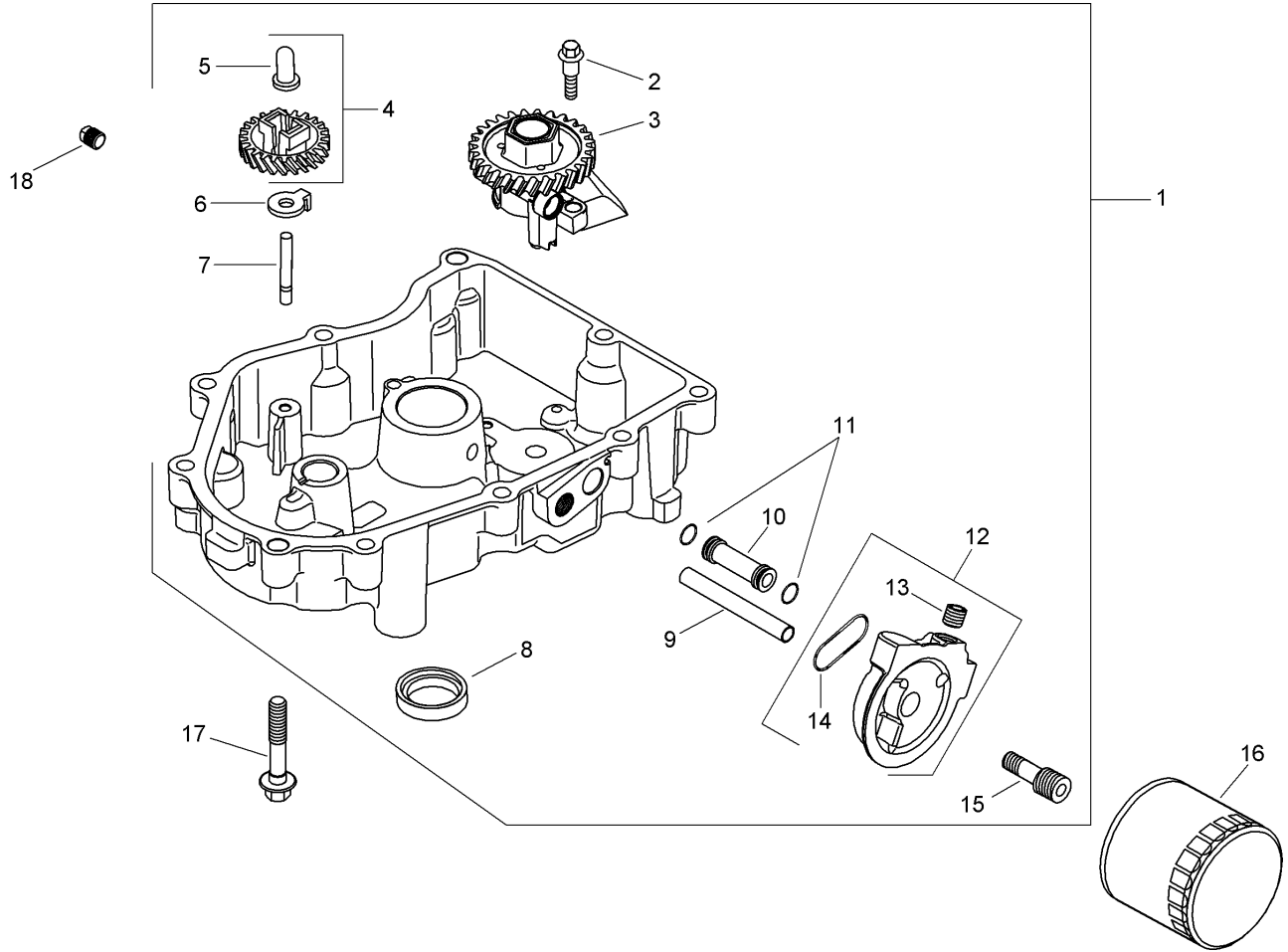
--	--	--	--



## Crankcase Assembly Kohler SV720-0029

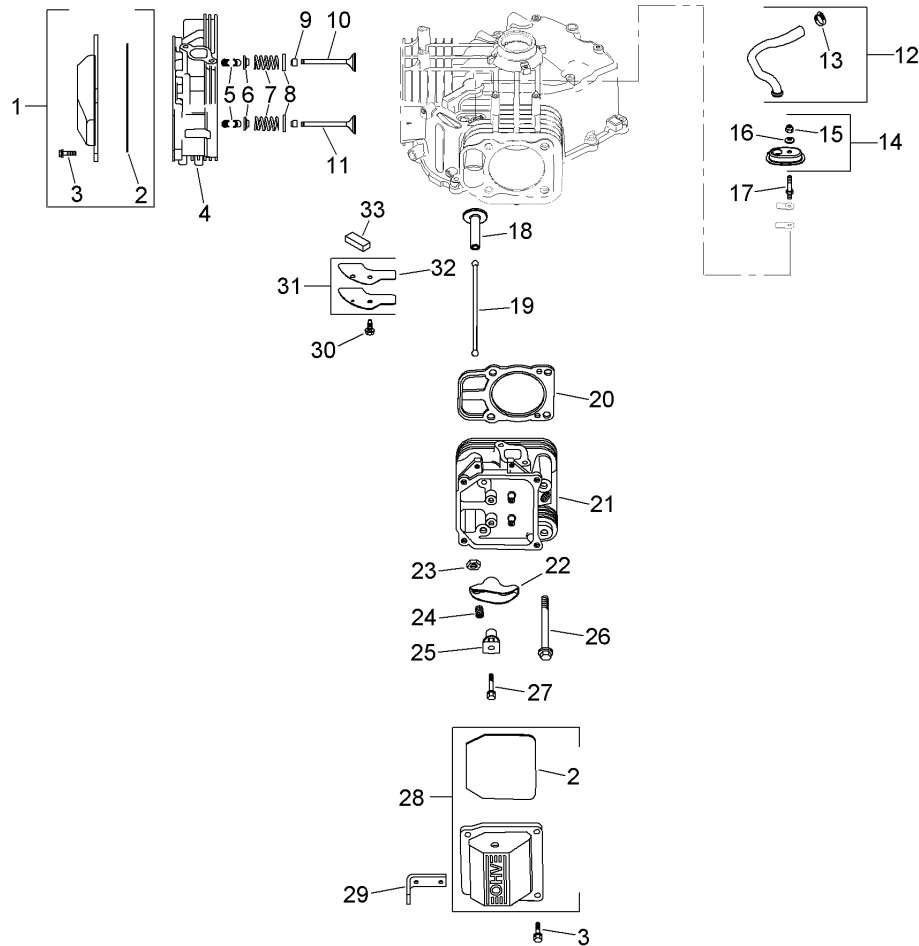
Ref	Part No.	Qty.	Description
❶	24 038 04-S	1	Dipstick ASM (Includes 2)
❷	25 153 02-S	1	O-Ring
❸	M-545013-S	1	Screw-Flange, Hex (M5X0.8X13)
❹	12 123 04-S	1	Oil Fill Tube ASM (Includes 5, 6)
❺	12 153 02-S	1	O-Ring
❻	12 153 01-S	1	O-Ring
❼	24 126 19-S	1	Bracket-Fill Tube, Oil
❽	24 032 01-S	1	Seal-Oil
❾		1	Crankcase (Use: Short Block 32 522 03)
❿	24 018 04-S	1	Retainer-Reed, Breather
⓫	12 402 02-S	1	Reed-Breather
⓬	24 380 16-S	6	Pin-Locating
⓭	24 067 16-S	2	Rod-Connecting (STD)
⓮	32 874 06-S	2	Piston W/Ring Set (STD) (Includes 15, 16)
⓯	32 874 09-S	1	Piston W/Ring Set Kit (.08)
⓰	32 874 08-S	1	Piston W/Ring Set Kit (.25)
⓱	24 018 01-S	4	Retainer-Pin, Piston
⓲	24 108 11-S	2	Ring Set (STD And .08)
⓳	24 108 06-S	1	Ring Set (.25)
⓴	12 422 07-S	1	Shim-Camshaft (White .028)
⓵	12 422 08-S	1	Shim-Camshaft (Blue .03)
⓶	12 422 09-S	1	Shim-Camshaft (Red .032)

Ref	Part No.	Qty.	Description
⓷	12 422 10-S	1	Shim-Camshaft (Yellow .034)
⓸	12 422 11-S	1	Shim-Camshaft (Green .036)
⓹	12 422 12-S	1	Shim-Camshaft (Gray .038)
⓺	12 422 13-S	1	Shim-Camshaft (Black .04)
⓻	32 012 01-S	1	Camshaft Kit (Includes 25, 357 15-S)
⓼	28 032 09-S	1	Seal-Shaft, Cross Governor
⓽	24 018 09-S	1	Ring-Retainer
⓾	M-931010-S	1	Washer-Flat (8 Mm)
⓿	24 468 15-S	1	Washer-Flat (.34)
⓿	24 144 38-S	1	Shaft-Cross, Governor
⓿	25 357 14-S	1	Lubricant-Camshaft



## Oil Pan and Lubrication Assembly Kohler SV720-0029

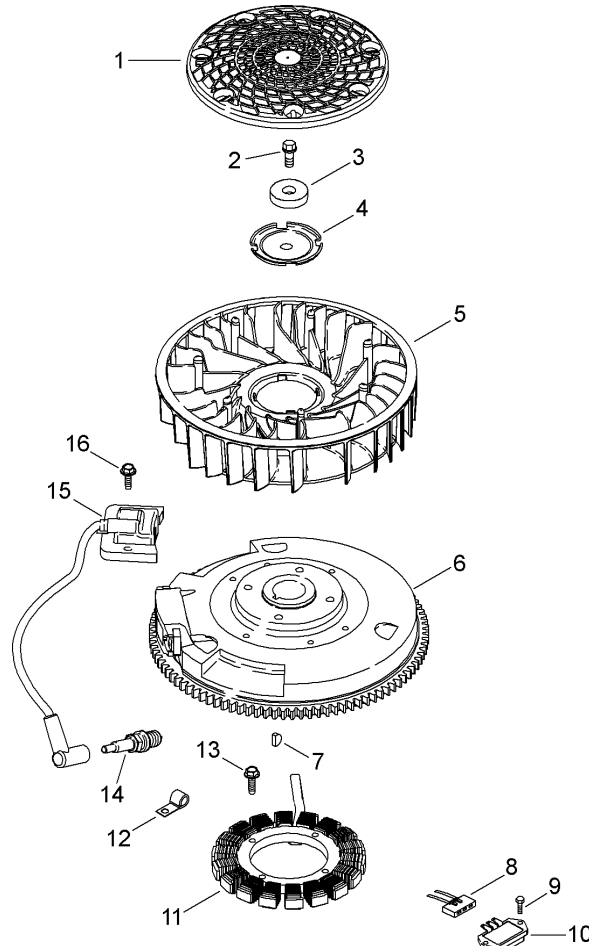
Ref	Part No.	Qty.	Description
❶	32 199 02-S	1	Oil Pan ASM (Includes 2-15)
❷	32 086 01-S	2	Screw-Hex Flange Thread Forming (Shoulder)
❸	32 393 10-S	1	Oil Pump ASM
❹	24 043 12-S	1	Governor Gear Kit W/Pin (Includes 5)
❺	12 380 01-S	1	Pin-Regulating, Governor
❻	24 448 02-S	1	Tab-Locking
❼	12 144 02-S	1	Shaft-Gear, Governor
❽	52 032 08-S	1	Seal-Oil
❾	32 123 01-S	1	Tube-Feed, Oil (Filter To Oil Pan)
❿	32 123 03-S	1	Tube-Feed, Oil (Oil Pan To Filter)
⓫	24 153 01-S	2	O-Ring, Oil Pick-Up
⓬	32 029 07-S	1	Adapter-Filter, Oil (Includes 13, 14)
⓭	25 139 60-S	1	Plug-Hex, Countersunk (.125)
⓮	32 153 04-S	1	O-Ring
⓯	32 136 03-S	1	Nipple-Filter, Oil
⓰	12 050 01-S	1	Filter-Oil
⓱	24 086 17-S	10	Screw-HF (M8X1.25X45)
⓲	25 139 57-S	1	Plug-Solid, Square Head (.38)

## Head, Valve and Breather Assembly Kohler SV720-0029

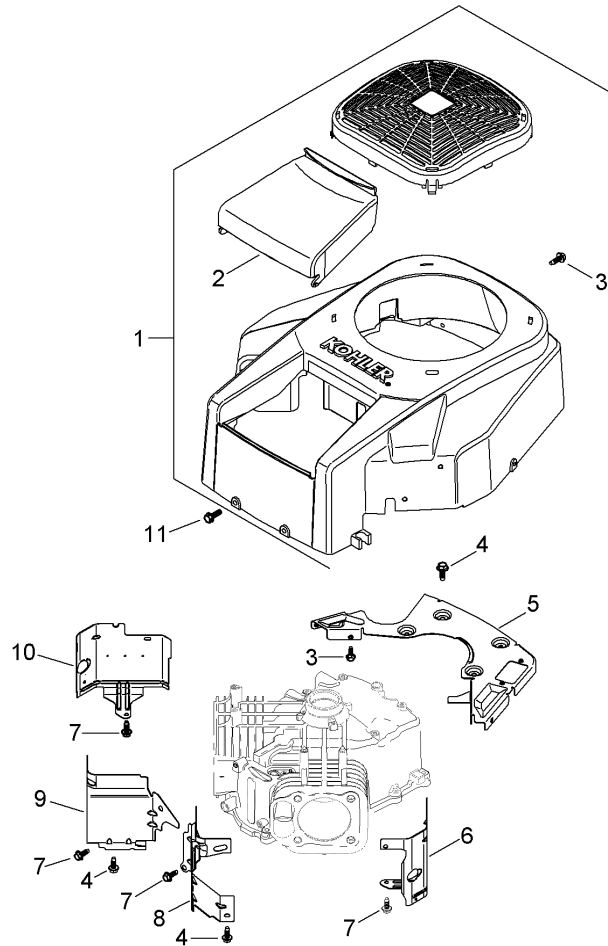
Ref	Part No.	Qty.	Description
❶	24 755 141-S	1	Plain Rocker Cover ASM (Includes 2, 3 (Qty 4))
❷	24 153 28-S	2	O-Ring, Valve Cover
❸	M-651030-S	8	Screw-Hex Flange (M6X1.0X30)
❹	32 318 01-S	1	Head ASM, No.1 Cylinder (Includes 26 (Qty 4) And Head Gasket)
❺	12 755 03-S	8	Retainer Kit
❻	12 173 01-S	4	Cap-Spring, Valve
❼	24 089 02-S	4	Spring-Valve
❽	235011-S	4	Retainer-Spring
❾	66 032 05-S	2	Seal-Stem, Valve
❿	24 017 01-S	2	Valve-Intake (Standard)
⓫	24 016 01-S	2	Valve-Exhaust (Standard)
⓬	32 326 04-S	1	Hose-Breather (Includes 13)
⓭	25 237 14-S	4	Clamp-Hose
⓮	32 081 02-S	1	Housing-Breather (Includes 15,16)
⓯	M-547050-S	1	Nut-Hex, Lock (M5X0.8)
⓰	32 468 01-S	1	Washer-Sealing
⓱	32 072 02-S	1	Stud-Breather Cover
⓲	32 019 01-S	4	Tappet
⓳	32 411 02-S	4	Rod-Push

Ref	Part No.	Qty.	Description
❷❶	24 841 03-S	2	Cylinder Head Gasket Kit (Includes head Mounting Hardware And 24 041 49-S, 24 153 27-S)
❷❷	32 318 02-S	1	Head ASM (No.2 Cylinder) (Includes 26 (Qty4) And Head Gasket)
❷❸	32 186 02-S	4	Arm-Rocker
❷❹	32 100 04-S	4	Nut-Hex (M10X0.75)
❷❺	32 086 03-S	4	Screw-Set
❷❻	24 599 02-S	4	Arm-Rocker, Pivot
❷❼	12 086 16-S	8	Screw-Hex Flange (M10X1.5X90)
❷❽	32 086 04-S	4	Screw-Hex Flange (M6X1.0X45)
❷❾	32 096 06-S	1	Breather Valve Cover ASM (Includes 2)
❷❿	24 445 01-S	1	Strap-Lifting
❸❶	M-645016-S	1	Screw-HHFTF (M6X1.0X16)
❸❷	32 096 04-S	1	Breather Cover ASM
❸❸	32 041 01-S	1	Gasket-Cover, Breather
❸❹	32 050 01-S	1	Filter-Breather
❸❺	24 041 49-S	1	Gasket-Cover, Breather
❸❻	24 153 27-S	1	O-Ring



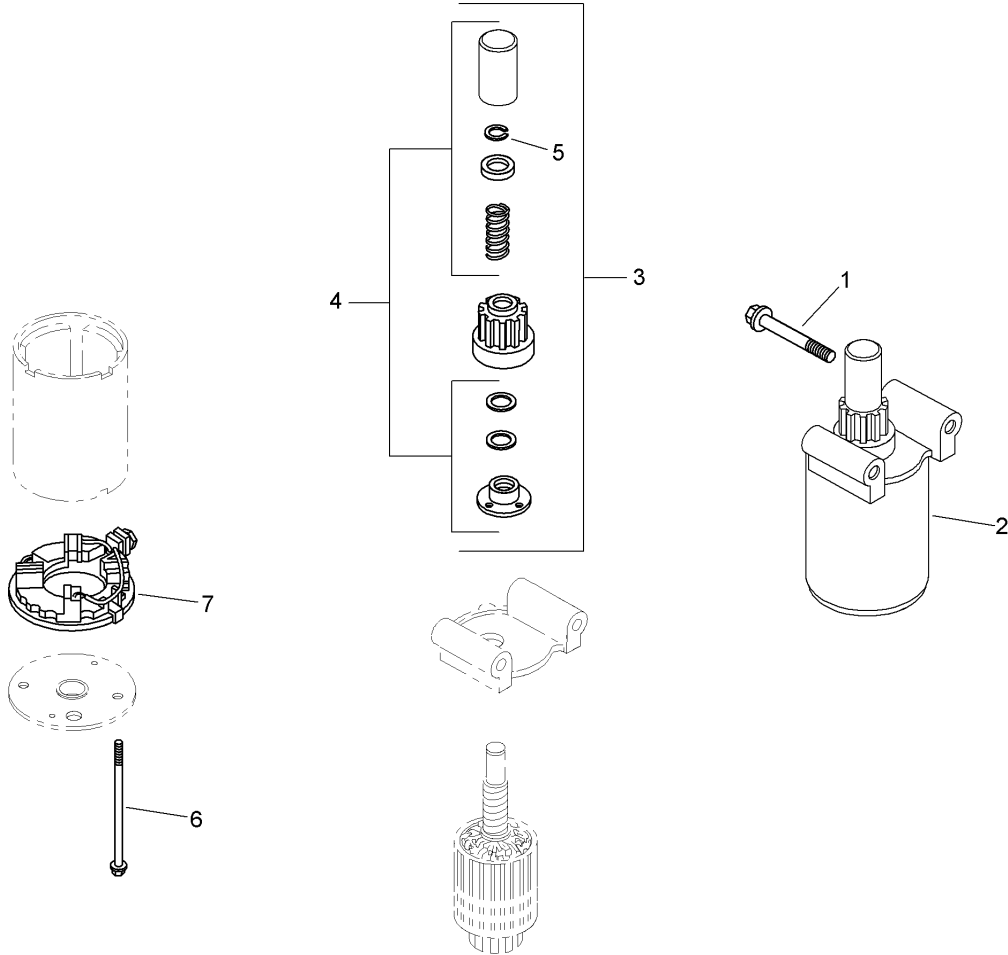
## Ignition and Electrical Assembly Kohler SV720-0029

Ref	Part No.	Qty.	Description
1	32 162 03-S	1	Screen-Grass
2	12 086 14-S	1	Screw-Hex, Flange (M10X1.5X45)
3	12 468 03-S	1	Washer-Flat (.38)
4	20 146 02-S	1	Plate-Fan Mounting
5	32 157 01-S	1	Fan
6	32 025 08-S	1	Flywheel
7	X-42-15-S	1	Key (.19 X .62)
8	236602-S	1	Connector (3 Contact)
9	M-551016-S	2	Screw-Hex Flange, Heavy (M5X0.8X16)
10	41 403 09-S	1	Rectifier-Regulator
11	237878-S	1	Stator Kit (15 Amp)
12	235173-S	1	Clip-Cable
13	M-548025-S	2	Screw-HHFTF (M5X0.8X25)
14	25 132 14-S	2	Spark Plug (R F I)
15	25 584 01-S	2	Module-Ignition, R F I
16	M-561025-S	4	Screw-Socket, Hex (M5X0.8X25)
16	25 454 03-S	2	Tie-Wire
16	32 176 04-S	1	Harness-Wiring



## Blower Housing Assembly Kohler SV720-0029

Ref	Part No.	Qty.	Description				
❶	32 027 08-S	1	Blower Housing ASM (Fixed Guard) (Includes 2, 3)				
❷	32 096 08-S	1	Cover-Cleaner, Air				
❸	M-545016-S	6	Screw-HHFTF (M5X0.8X16)				
❹	M-645016-S	6	Screw-HHFTF (M6X1.0X16)				
❺	32 146 05-S	1	Plate-Backing (Rectifier-Regulator Opening)				
❻	32 063 05-S	1	Baffle-Cylinder Barrel (No.2 Side)				
❼	M-545010-S	5	Screw-HHFTF (M5X0.8X10)				
❽	32 063 02-S	1	Baffle-Valley (No.2 Side)				
❾	32 063 03-S	1	Baffle-Valley (No.1 Side)				
❿	32 063 06-S	1	Baffle-Cylinder Barrel (No.1 Side)				
⓫	24 086 12-S	2	Screw-Hex Cap (M6X1.7X18)				
⓬	32 113 11-S	1	Decal-Guard, Fixed				

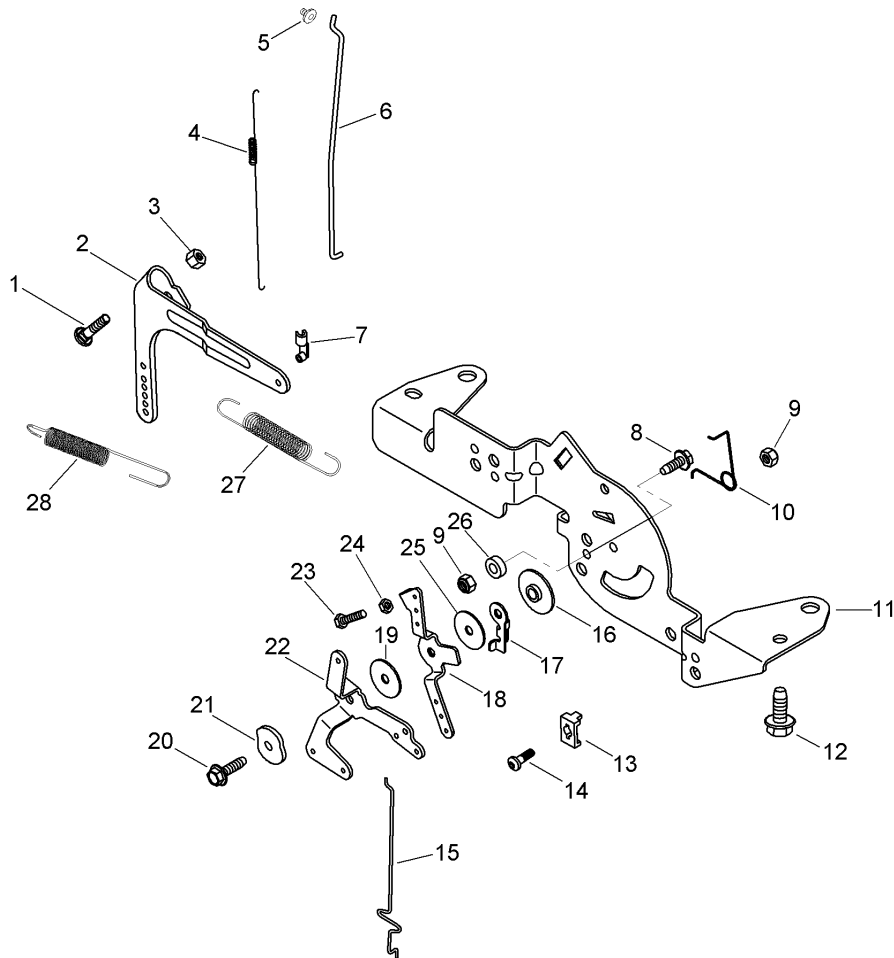


## Starter Assembly Kohler SV720-0029

Ref	Part No.	Qty.	Description
❶	M-839080-S	2	Screw-Hex, Flange (M8X1.25X70)
❷	32 098 01-S	1	Starter ASM (Includes 3-7)
❸	12 755 39-S	1	Drive Kit (Includes 4, 5)
❹	12 755 38-S	1	Drive Parts Kit (Includes 5)
❺	32 141 01-S	1	Ring-Retaining
❻	32 211 01-S	2	Bolt-Thru
❼	12 243 04-S	1	Cap-End, Commutator

--	--	--	--

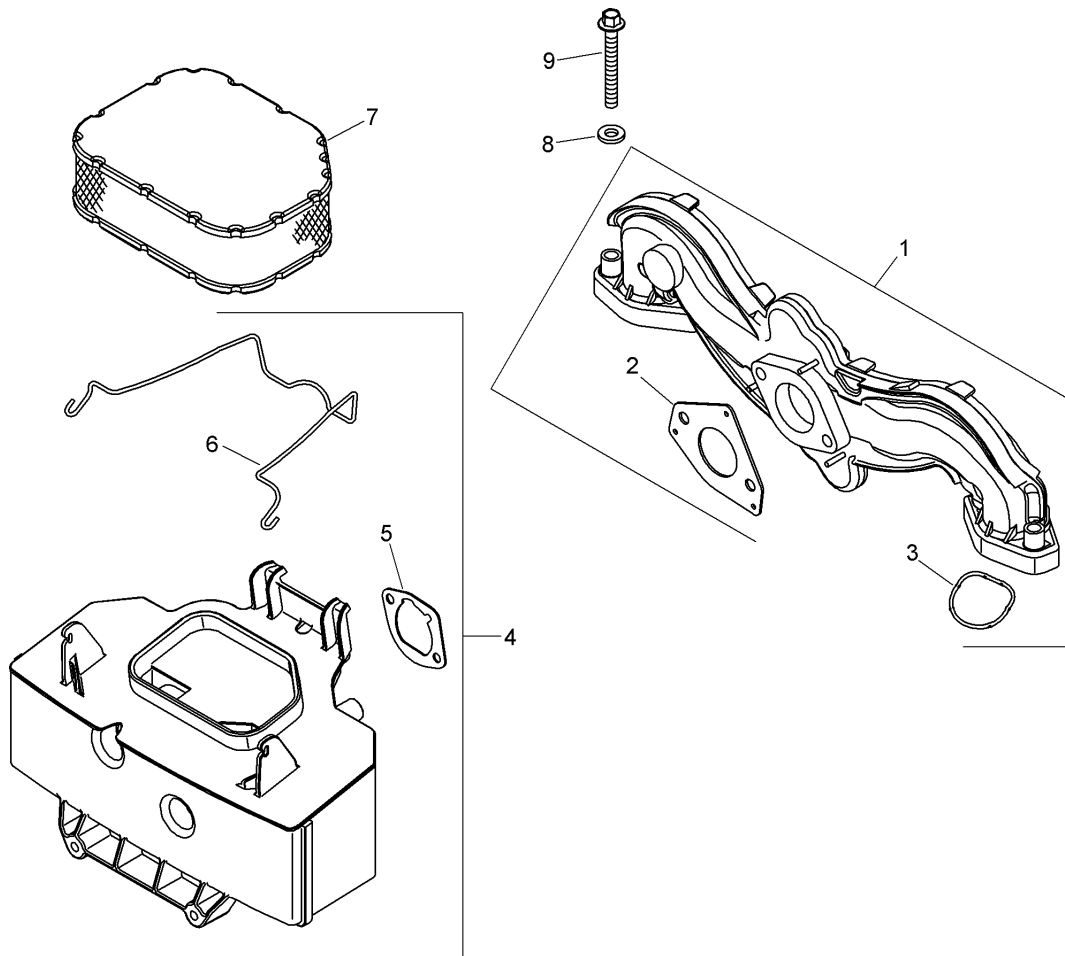




## Engine Control Assembly Kohler SV720-0029

Ref	Part No.	Qty.	Description
❶	24 211 03-S	1	Bolt-Rd HD Sq Neck (M6X1.0X25)
❷	24 090 33-S	1	Lever-Governor
❸	M-641060-S	1	Nut-Hex, Flange (M6X1.0)
❹	24 089 01-S	1	Spring-Linkage
❺	25 158 08-S	1	Bushing-Retaining, Linkage
❻	24 079 04-S	1	Linkage-Throttle
❼	25 158 11-S	1	Bushing-Linkage, Throttle
❽	M-545016-S	1	Screw-HHFTF (M5X0.8X16)
❾	M-547050-S	2	Nut-Hex, Lock (M5X0.8)
❿	24 089 03-S	1	Spring-Return, Choke
⓫	24 126 161-S	1	Bracket-Control
⓬	M-645016-S	4	Screw-HHFTF (M6X1.0X16)
⓭	12 237 01-S	2	Clamp-Cable
⓮	24 086 43-S	2	Screw-Lbd Thd Frm (M5X0.8X16)
⓯	24 079 22-S	1	Linkage-Choke
⓰	24 112 27-S	1	Spacer-Control
⓱	24 090 47-S	1	Lever-Actuator, Throttle
⓲	24 090 13-S	1	Lever-Control, Throttle
⓳	24 468 01-S	1	Washer-Flat (5.5 Mm)
⓴	M-545020-S	1	Screw-HHFTF (M5X0.8X20)
⓵	41 468 03-S	1	Washer-Spring (.25)
⓶	24 090 05-S	1	Lever-Choke
⓷	M-403025-S	1	Screw-Hex Head Cap (M4X0.7X25)

Ref	Part No.	Qty.	Description
❷❹	M-446030-S	1	Nut-Hex (M4X0.7)
❷❺	24 468 20-S	1	Washer-Flat (5 Mm)
❷❻	24 112 24-S	1	Control Spacer ASM
❷❼	24 089 55-S	1	Spring-Governor
❷❽	24 089 18-S	1	Spring-Governor



## Air Intake and Filtration Assembly Kohler SV720-0029

Ref	Part No.	Qty.	Description
❶	24 164 51-S	1	Manifold-Intake (Includes 2, 3)
❷	24 041 52-S	1	Gasket-Carburetor
❸	24 153 27-S	2	O-Ring
❹	32 094 04-S	1	Air Cleaner Base ASM (Includes 5, 6)
❺	24 041 14-S	1	Gasket-Base, Air Cleaner
❻	32 344 02-S	1	Latch-Element, Air Cleaner
❼	32 083 03-S	1	Element-Cleaner, Air
❽	X-25-63-S	1	Washer-Flat (.25)
❾	M-651040-S	4	Screw-Hex Flange (M6X1.0X40)

--	--	--	--



# Attachments and Accessories

## For 74372 - TimeCutter Z5020 Riding Mower

Product Name	Model/Part
Hour Meter Kit .....	112-9763
Deck Ring Kit .....	114-1608
Highlift Blade Kit .....	114-1626
50 Inch Recycler Kit .....	79312
Engine Cover Kit .....	79314
Floor Mat Kit .....	79315
42 Inch and 50 Inch Twin Bagger .....	79324

