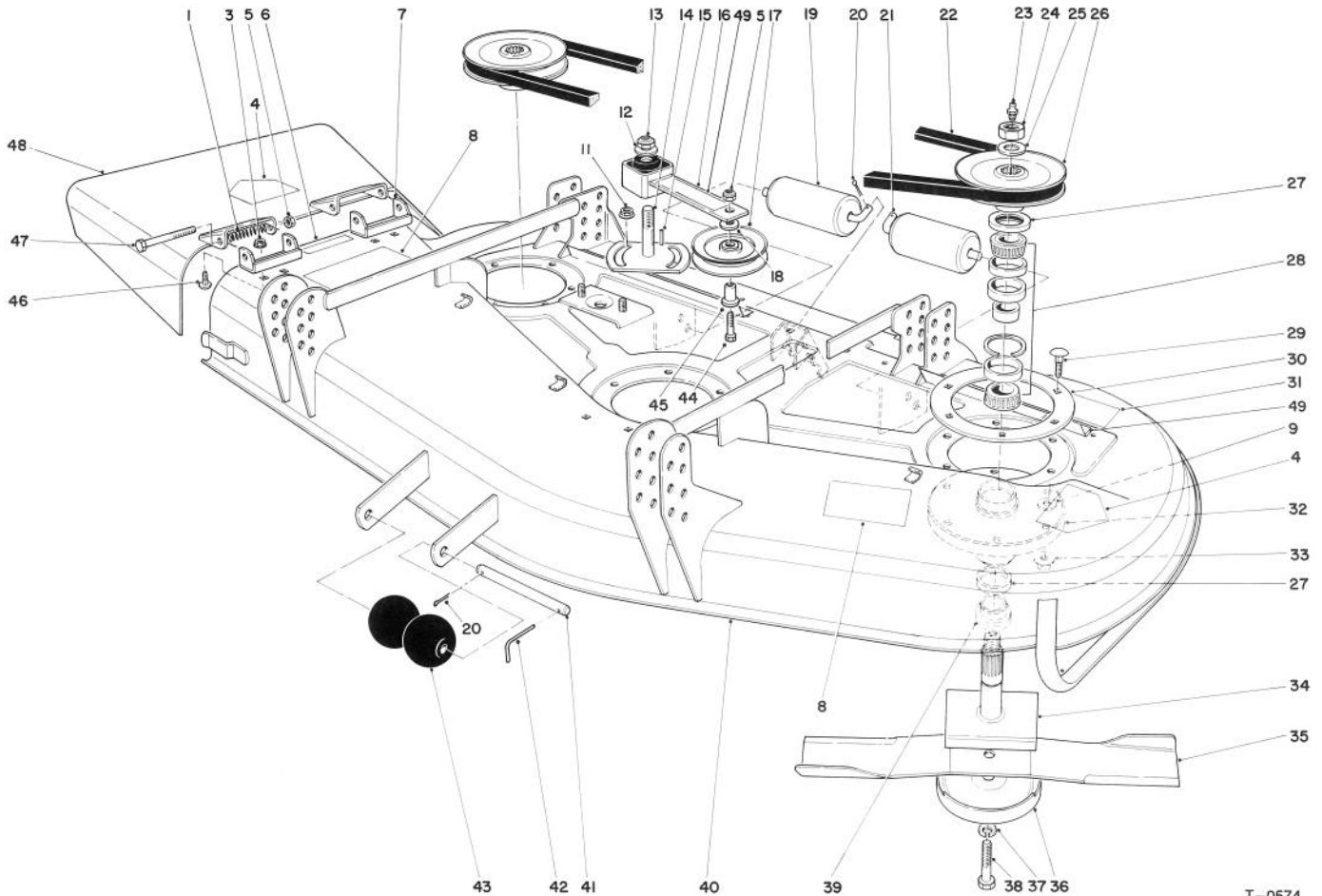




MODEL NO. 30555 - 39001 & UP	PARTS CATALOG
52" CUTTING UNIT Groundsmaster® 200 Series	



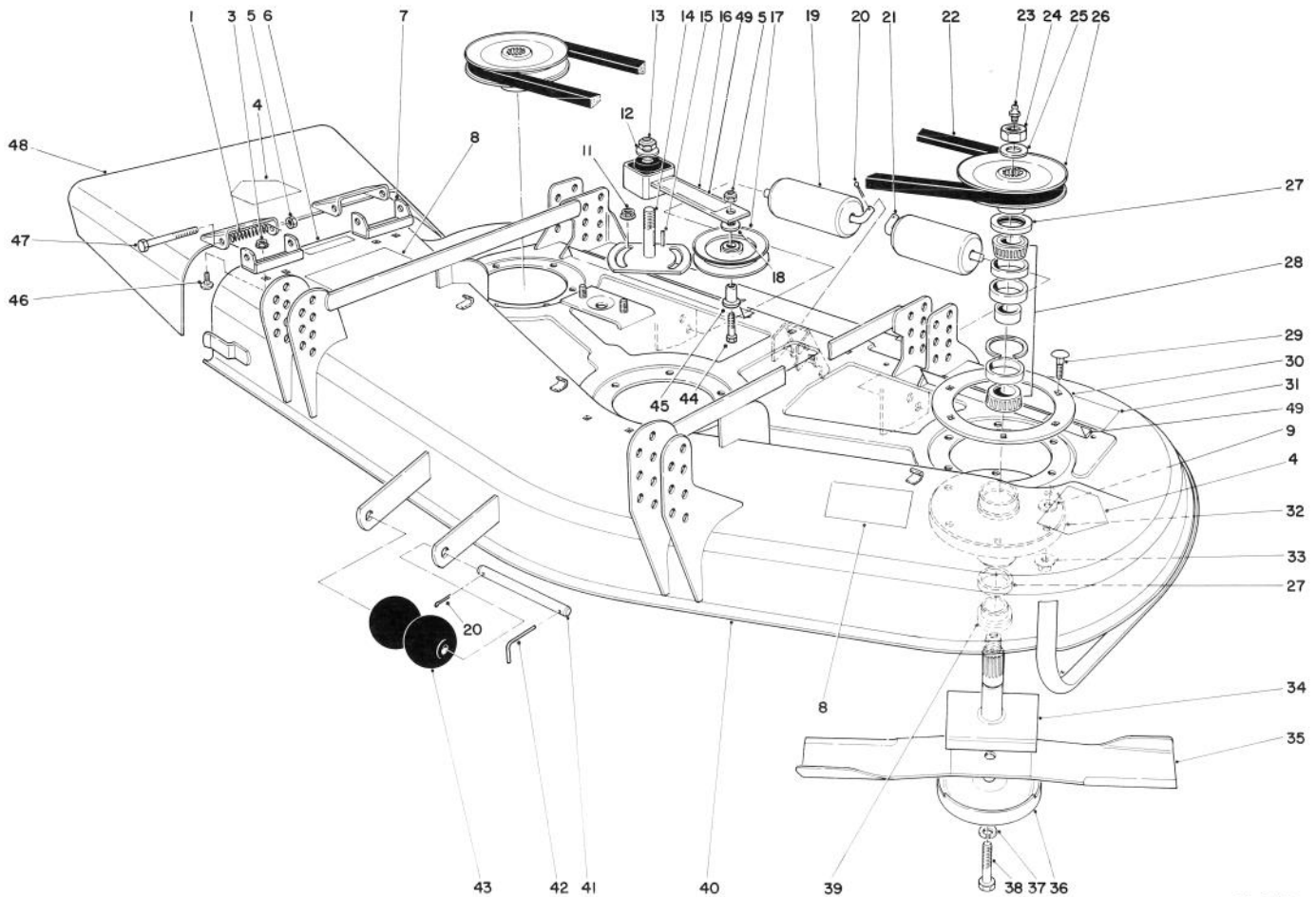
T-0574

DECK AND SPINDLE ASSEMBLY

Ref. No.	Part No.	Description	No. Used
1	40-6230	Spring - Torsion	1
3	32128-20	Nut - Lock	4
4	43-8480	Decal - Danger	2
5	3296-5	Nut - Lock	3
6	66-6380	Decal - Deflector Missing	1
7	29-5590	Pivot Bracket - Deflector	2
8	66-1340	Decal - Danger	2
9	3256-24	Washer - Flat	18
11	3290-357	Nut - Flange	2
12	3256-27	Washer - Flat	1
13	3296-33	Nut - Lock	1
14	28-9060	Plate - Idler	1
15	5-1077	Key - Square	1
16	27-8580	Idler Socket	1

Ref. No.	Part No.	Description	No. Used
17	65-5940	Pulley - Idler	1
18	7-0081	Washer - Special	1
19	36-1740	Roller - Deck	2
20	3272-11	Pin - Cotter	3
21	40-0340	Shaft - Rear Roller	2
22	27-1160	V-Belt	1
23	302-2	Fitting - Grease	3
24	32146-20	Nut - Lock	3
25	7-4150	Washer	3
26	27-0970	Pulley	3
27	253-139	Seal - Wave	6
28	46-8530	Assembly - Bearing	3
29	3231-22	Bolt - Carriage	18
30	27-7680	Ring - Deck Support	3

TPS



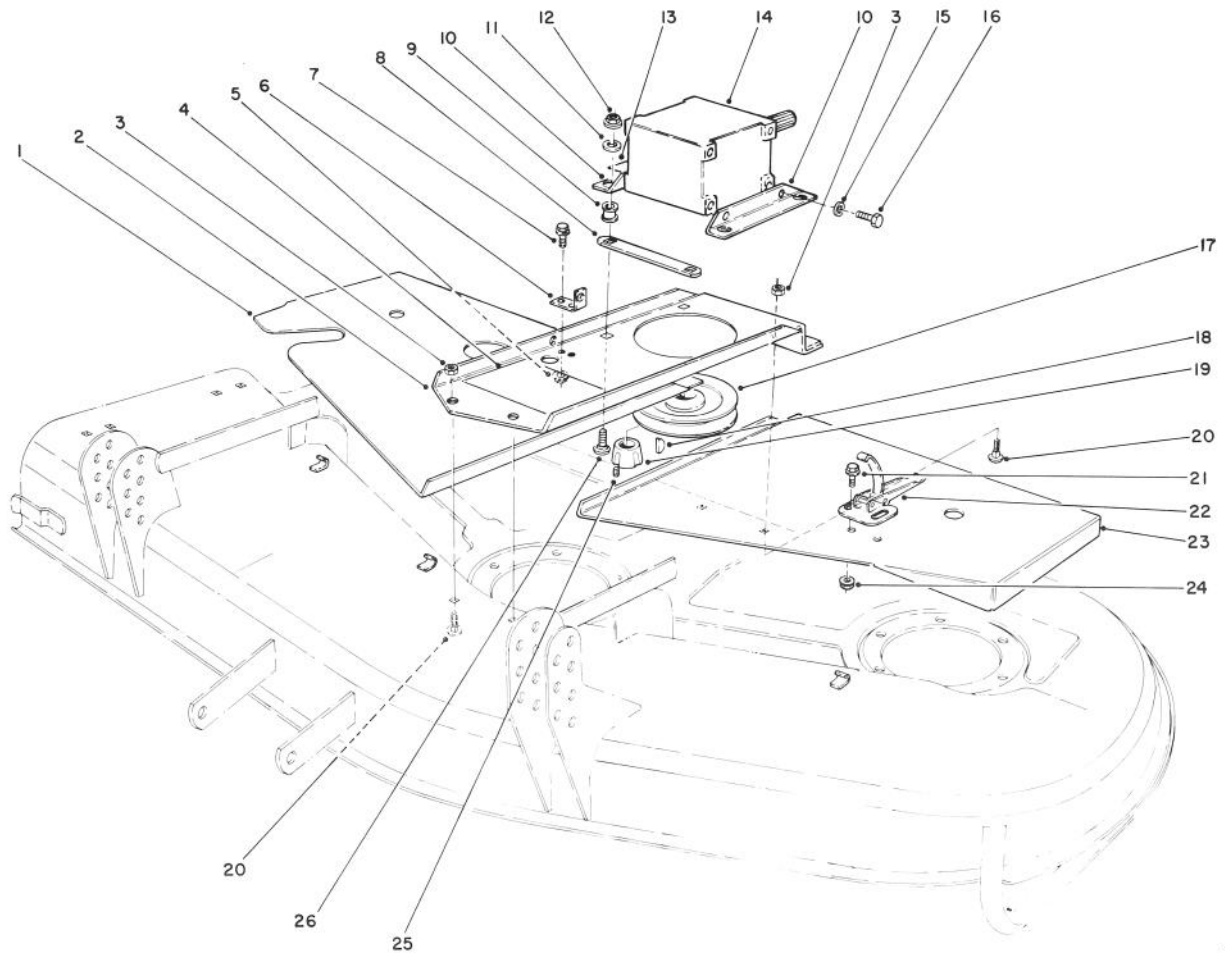
T-0574

DECK AND SPINDLE ASSEMBLY (Continued)

Ref. No.	Part No.	Description	No. Used
31	68-8340	Decal - Blade Bolt Torque	1
32	61-4160	Housing - Spindle	3
33	32128-21	Nut - Flange	18
34	27-0920	Spindle - Shaft	3
35	27-0990	Blade	3
36	72-9361	Anti-Scalp Cup	3
37	3253-27	Washer - Lock	3
38	44-2200	Screw - Blade Bolt	3
39	27-0950	Spacer - Spindle Bearing	3
40	72-9210	Cutting Deck	1
41	40-6400	Shaft - Roller	1
42	57-0690	Pin - Cotter, Special	1
43	29-4820	Roller	2

Ref. No.	Part No.	Description	No. Used
44	3211-8	Screw - Cap Hex. Hd.	1
45	65-5950	Bushing - Pulley	1
46	3230-23	Bolt - Carriage	4
47	3211-15	Screw - Cap Hex. Hd.	2
48	14-0899	Deflector - Grass (Incl. Ref. #4)	1
49	67-5360	Decal - Shield Missing	2
*	44-5480	Blade - High Sail (Optional)	3
*	27-0870	Assembly - Spindle (Incl. Ref. #23-28, 32, 34 & 39)	3
*	27-5970	Set - Spacer, Matched	1

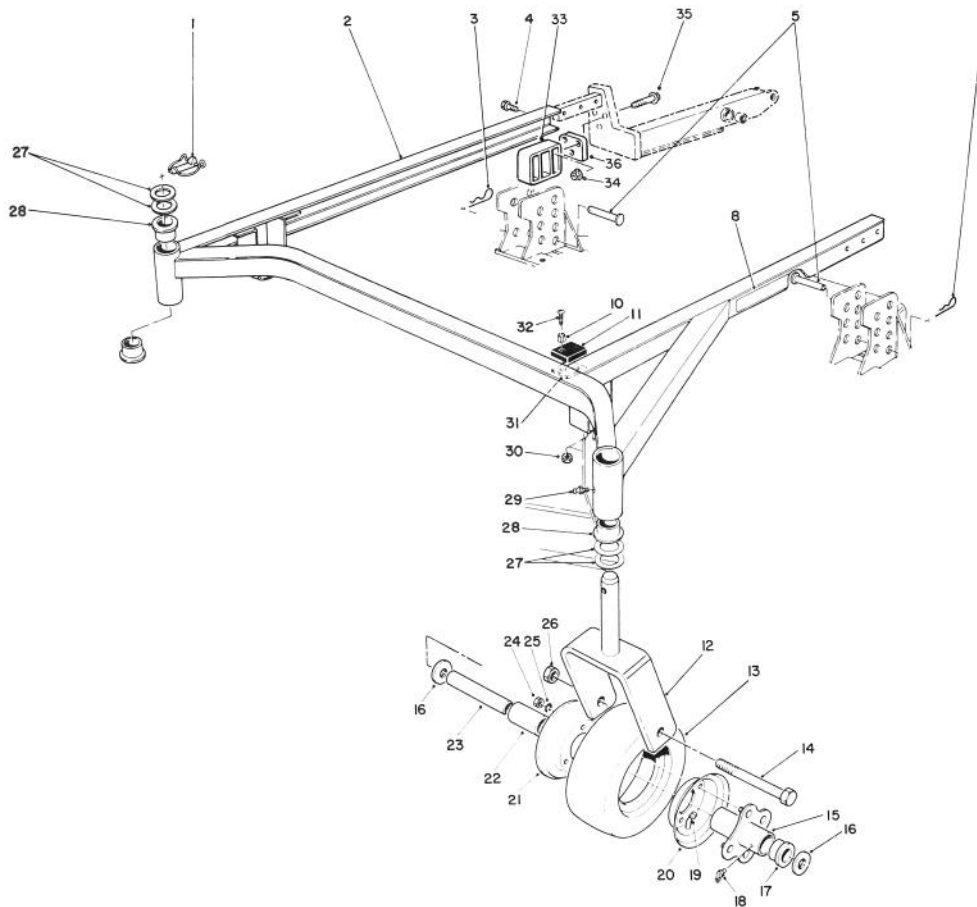
*Not Illustrated



T-0576

COVERS AND GEAR BOX ASSEMBLY

Ref. No.	Part No.	Description	No. Used	Ref. No.	Part No.	Description	No. Used
1	72-9300	Cover R.H.	1	15	3253-21	Washer - Flat	4
2	72-9230	Base - Gear Box	1	16	323-4	Screw - Cap Hex. Hd.	4
3	3290-357	Nut - Flange	4	17	63-9900	Pulley - Gear Box	1
4	51-3960	Decal - 52	1	18	3257-5	Key - Woodruff	1
5	32128-20	Nut - Flange	2	19	27-6140	Bushing - Taper Lock (Incl. Ref. #25)	1
6	72-9240	Bracket - Extension	1	20	3231-27	Bolt - Carriage	4
7	322-4	Screw - Cap Hex. Hd.	2	21	3290-321	Screw - Machine	6
8	68-9890	Cover - Gear Box	1	22	249-21	Latch - Draw	3
9	63-9750	ISO Mount - Gear Box	4	23	72-9340	Cover L.H.	1
10	68-8560	Bracket - Gear Box	2	24	32128-17	Nut - Flange	6
11	63-8410	Washer	4	25	3245-9	Screw - Set	1
12	32153-2	Nut	4	26	3231-26	Bolt - Carriage	4
13	70-2560	Decal - Lube	1				
14	68-6810	Assembly - Gear Box	1				

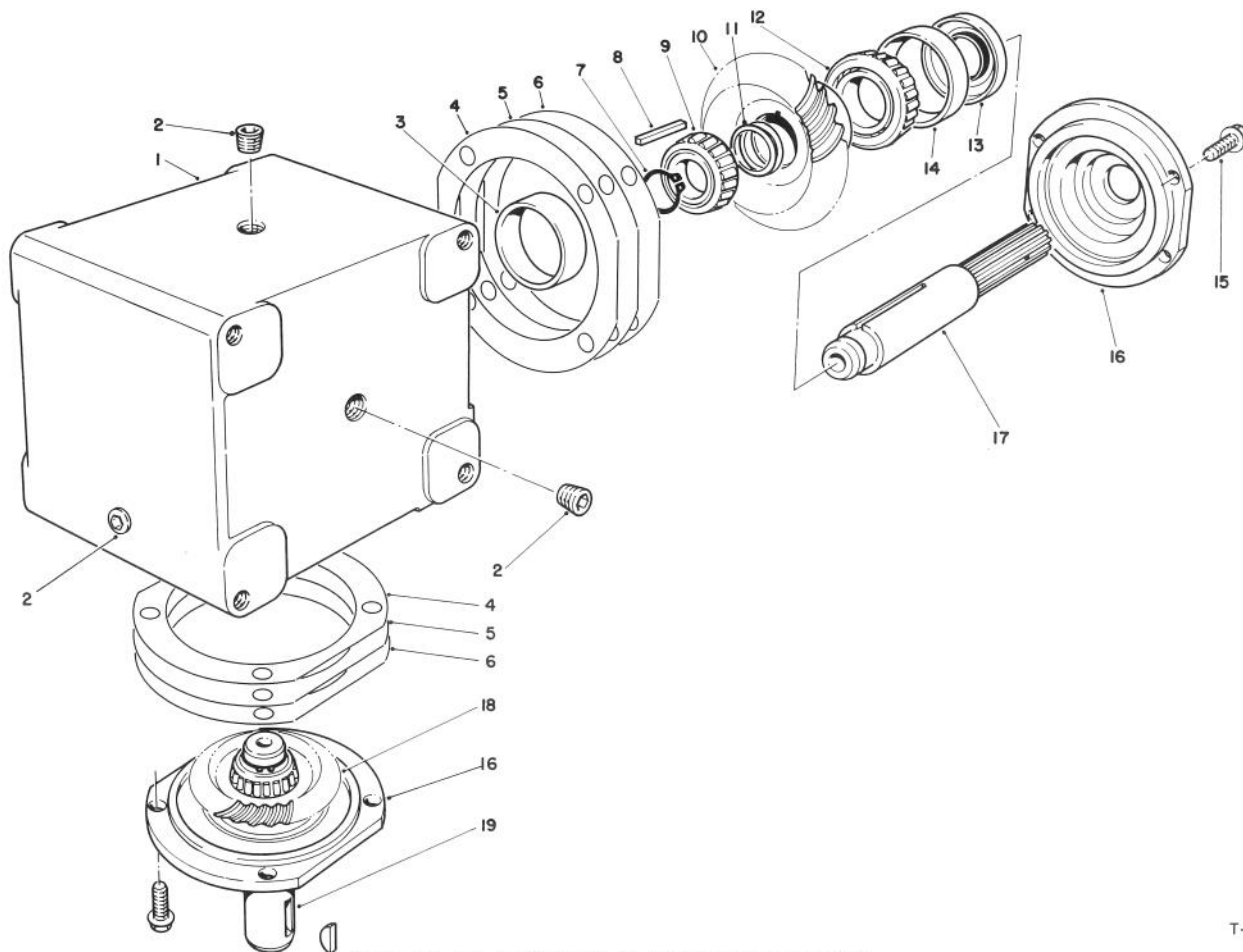


T-1249

CARRIER FRAME ASSEMBLY

Ref. No.	Part No.	Description	No. Used	Ref. No.	Part No.	Description	No. Used
1	3290-384	Pin - Lynch	2	21	68-8930	Wheel Half - Male	2
2	83-4550	Frame - Deck Suspension (Incl. Ref. #28)	1	22	62-5570	Bearing - Roller	2
3	3290-355	Pin - Hair	4	23	68-8980	Bushing - Spanner	2
4	325-32	Screw - Cap Hex Hd.	6	24	3217-6	Nut - Hex.	8
5	283-55	Pin - Clevis	4	25	3253-4	Washer - Lock	8
6	302-40	Fitting - Grease	2	26	32153-5	Nut - Lock	2
8	68-8360	Decal - H.O.C.	1	27	3-6781	Washer - Thrust	8
10	40-9520	Spacer - Split	4	28	28-9290	Bushing - Special	4
11	40-0330	Cushion - Rubber	2	29	302-5	Fitting - Grease	2
12	68-8900	Fork - Castor, Front	2	30	3296-2	Nut - Lock	4
13	68-8960	Tire	2	31	42-6200	Cushion - Shim	A/R
14	325-19	Screw - Cap Hex Hd.	2	32	32122-28	Screw - Mach. Truss Hd.	4
15	68-8940	Hub - Center	2	33	83-4520	Cradle - Rear	2
16	3256-6	Washer - Thrust	4	34	32128-40	Nut - Flange	6
17	62-5580	Bushing	4	35	66-9302	Screw - Flange Hd.	6
18	302-61	Fitting - Grease	2	36	83-4580	Spacer	2
19	68-8950	Tube w/Valve	2	*	13-3869	Set of 2 Castor Wheel (Incl. Ref. #13, 15, 17-22 & 24-25)	1
20	68-8920	Wheel Half - Female	2				

*Not Illustrated

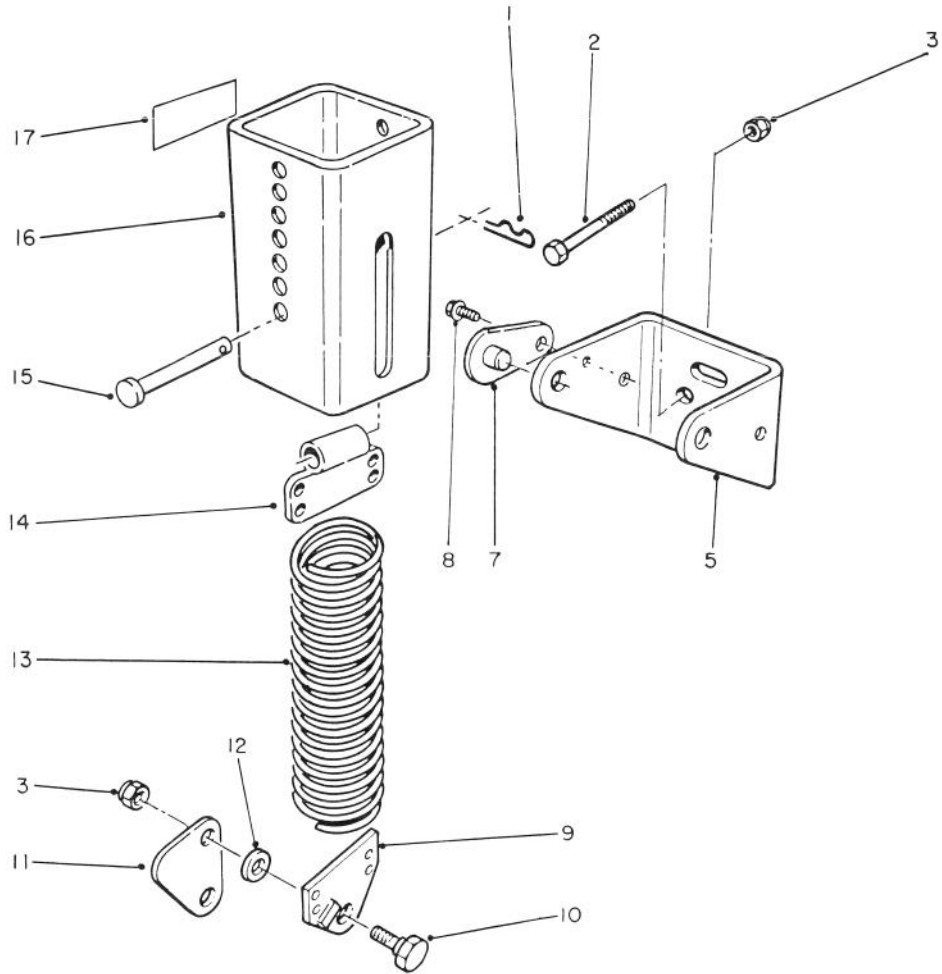


T-0977

GEAR BOX ASSEMBLY

Ref. No.	Part No.	Description	No. Used
1	68-7030	Housing	1
2	62-3490	Plug - Pipe (Solid)	4
3	62-3360	Cup - Bearing	2
4	62-3420	Gasket (.015)	A/R
5	62-3430	Gasket (.005)	A/R
6	62-3440	Gasket (.003)	A/R
7	68-7070	Ring - Retaining	2
8	62-3380	Key	2
9	62-3370	Cone - Bearing	2
10	68-7080	Gear	1

Ref. No.	Part No.	Description	No. Used
11	72-9370	Shim (.020)	2
12	62-3330	Cone - Gear	1
13	62-3400	Seal	2
14	62-3340	Cup - Bearing	2
15	62-3310	Screw - Cap	8
16	62-3410	Cap	2
17	68-7040	Shaft	1
18	68-7060	Gear	1
19	68-7050	Shaft	1
*	68-6810	Gear Box Assembly	1



T-1219

COUNTER BALANCE

Ref. No.	Part No.	Description	No. Used
1	3290-355	Pin - Hair Cotter	1
3	3296-44	Nut - Lock	2
5	66-8460	Bracket - Mounting	1
7	70-7920	Assembly - Pin, Lock	2
8	12-3270	Screw - Self Tapping	2
9	66-8420	End - Spring	1
10	46-3380	Bolt - Shoulder	2
11	66-8450	Link - Knee	1

Ref. No.	Part No.	Description	No. Used
12	3256-24	Washer - Flat	2
13	66-8390	Spring - Extension	1
14	70-7940	End - Spring	1
15	283-69	Pin - Clevis	1
16	70-7970	Assembly - Cover, Spring	1
17	55-4300	Decal - Caution	2
*	70-8091	Counter Balance Assembly (Incl. Ref.# 1-15)	1

TORO PART NUMBER INDEX

3315-681

Part No.	Description	Pg. No.	Ref. No.	Qty.	Part No.	Description	Pg. No.	Ref. No.	Qty.
3-6781	Washer - Thrust	4	27	8	67-5360	Decal - Shield Missing	2	49	2
5-1077	Key - Square	1	15	1	68-6810	Assembly - Gear Box	3	14	1
7-0081	Washer - Special	1	18	1	68-7030	Housing	5	1	1
7-4150	Washer	1	25	3	68-7040	Shaft	5	17	1
12-3270	Screw - Self Tapping	6	8	2	68-7050	Shaft	5	19	1
13-3869	Set of 2 Castor Wheel	4	*	1	68-7060	Gear	5	18	1
14-0899	Deflector - Grass	2	48	1	68-7070	Ring - Retaining	5	7	2
27-0870	Assembly - Spindle	2	*	3	68-7080	Gear	5	10	1
27-0920	Spindle - Shaft	2	34	3	68-8340	Decal - Blade Bolt Torque	2	31	1
27-0950	Spacer - Spindle Bearing	2	39	3	68-8360	Decal - H.O.C.	4	8	1
27-0970	Pulley	1	26	3	68-8560	Bracket - Gear Box	3	10	2
27-0990	Blade	2	35	3	68-8900	Fork - Castor, Front	4	12	2
27-1160	V-Belt	1	22	1	68-8920	Wheel Half - Female	4	20	2
27-5970	Set - Spacer, Matched	2	*	1	68-8930	Wheel Half - Male	4	21	2
27-6140	Bushing - Taper Lock	3	19	1	68-8940	Hub - Center	4	15	2
27-7680	Ring - Deck Support	1	30	3	68-8950	Tube w/Valve	4	19	2
27-8580	Idler Socket	1	16	1	68-8960	Tire	4	13	2
28-9060	Plate - Idler	1	14	1	68-8980	Bushing - Spanner	4	23	2
28-9290	Bushing - Special	4	28	4	68-9890	Cover - Gear Box	3	8	1
29-4820	Roller	2	43	2	70-2560	Decal - Lube	3	13	1
29-5590	Pivot Bracket - Deflector	1	7	2	70-7920	Assembly - Pin, Lock	6	7	2
36-1740	Roller - Deck	1	19	2	70-7940	End - Spring	6	14	1
40-0330	Cushion - Rubber	4	11	2	70-7970	Assembly - Cover, Spring	6	16	1
40-0340	Shaft - Rear Roller	1	21	2	70-8091	Counter Balance Assembly	6	*	1
40-6230	Spring - Torsion	1	1	1	72-9210	Cutting Deck	2	40	1
40-6400	Shaft - Roller	2	41	1	72-9230	Base - Gear Box	3	2	1
40-9520	Spacer - Split	4	10	4	72-9240	Bracket - Extension	3	6	1
42-6200	Cushion - Shim	4	31A/R		72-9300	Cover R.H.	3	1	1
43-8480	Decal - Danger	1	4	2	72-9340	Cover L.H.	3	23	1
44-2200	Screw - Blade Bolt	2	38	3	72-9361	Anti-Scalp Cup	2	36	3
44-5480	Blade - High Sail (Optional)	2	*	3	72-9370	Shim (.020)	5	11	2
46-3380	Bolt - Shoulder	6	10	2	83-4520	Cradle - Rear	4	33	2
46-8530	Assembly - Bearing	1	28	3	83-4550	Frame - Deck Suspension	4	2	1
51-3960	Decal - 52"	3	4	1	83-4580	Spacer	4	36	2
55-4300	Decal - Caution	6	17	2	249-21	Latch - Draw	3	22	3
57-0690	Pin - Cotter, Special	2	42	1	253-139	Seal - Wave	1	27	6
61-4160	Housing - Spindle	2	32	3	283-55	Pin - Clevis	4	5	4
62-3310	Screw - Cap	5	15	8	283-69	Pin - Clevis	6	15	1
62-3330	Cone - Gear	5	12	1	302-2	Fitting - Grease	1	23	3
62-3340	Cup - Bearing	5	14	2	302-5	Fitting - Grease	4	29	2
62-3360	Cup - Bearing	5	3	2	302-40	Fitting - Grease	4	6	2
62-3370	Cone - Bearing	5	9	2	302-61	Fitting - Grease	4	18	2
62-3380	Key	5	8	2	322-4	Screw - Cap Hex. Hd.	3	7	2
62-3400	Seal	5	13	2	323-4	Screw - Cap Hex. Hd.	3	16	4
62-3410	Cap	5	16	2	325-19	Screw - Cap Hex Hd.	4	14	2
62-3420	Gasket (.015)	5	4A/R		325-32	Screw - Cap Hex Hd.	4	4	6
62-3430	Gasket (.005)	5	5A/R		3211-8	Screw - Cap Hex. Hd.	2	44	1
62-3440	Gasket (.003)	5	6A/R		3211-15	Screw - Cap Hex. Hd.	2	47	2
62-3490	Plug - Pipe (Solid)	5	2	4	3217-6	Nut - Hex.	4	24	8
62-5570	Bearing - Roller	4	22	2	3230-23	Bolt - Carriage	2	46	4
62-5580	Bushing	4	17	4	3231-22	Bolt - Carriage	1	29	18
63-8410	Washer	3	11	4	3231-26	Bolt - Carriage	3	26	4
63-9750	ISO Mount - Gear Box	3	9	4	3231-27	Bolt - Carriage	3	20	4
63-9900	Pulley - Gear Box	3	17	1	3245-9	Screw - Set	3	25	1
65-5940	Pulley - Idler	1	17	1	3253-4	Washer - Lock	4	25	8
65-5950	Bushing - Pulley	2	45	1	3253-21	Washer - Flat	3	15	4
66-1340	Decal - Danger	1	8	2	3253-27	Washer - Lock	2	37	3
66-6380	Decal - Deflector Missing	1	6	1	3256-6	Washer - Thrust	4	16	4
66-8390	Spring - Extension	6	13	1	3256-24	Washer - Flat	1	9	18
66-8420	End - Spring	6	9	1	3256-24	Washer - Flat	6	12	2
66-8450	Link - Knee	6	11	1	3256-27	Washer - Flat	1	12	1
66-8460	Bracket - Mounting	6	5	1	3257-5	Key - Woodruff	3	18	1
66-9302	Screw - Flange Hd.	4	35	6	3272-11	Pin - Cotter	1	20	3

*Not Illustrated

TORO PART NUMBER INDEX (Cont.)

Part No.	Description	Pg. Ref. No. No. Qty.	Part No.	Description	Pg. Ref. No. No. Qty.
3290-321	Screw - Machine	3 21 6	32122-28	Screw - Mach. Truss Hd.	4 32 4
3290-355	Pin - Hair	4 3 4	32128-17	Nut - Flange	3 24 6
3290-355	Pin - Hair Cotter	6 1 1	32128-20	Nut - Flange	3 5 2
3290-357	Nut - Flange	3 3 4	32128-20	Nut - Lock	1 3 4
3290-357	Nut - Flange	1 11 2	32128-21	Nut - Flange	2 33 18
3290-384	Pin - Lynch	4 1 2	32128-40	Nut - Flange	4 34 6
3296-2	Nut - Lock	4 30 4	32146-20	Nut - Lock	1 24 3
3296-5	Nut - Lock	1 5 3	32153-2	Nut	3 12 4
3296-33	Nut - Lock	1 13 1	32153-5	Nut - Lock	4 26 2
3296-44	Nut - Lock	6 3 2			

TABLE OF CONTENTS

Description	Page	Description	Page
Deck And Spindle Assembly	1	Optional Equipment	
Covers And Gear Box Assembly	3	See Separate Forms	
Carrier Frame Assembly	4	Phenolic Wheel Assembly	Part No. 27-1050
Gear box Assembly	5	Kit -52" Baffle	Part No. 68-7210
Counter Balance Assembly		Kit-52" Mulcher	Model No.30700

*Not Illustrated