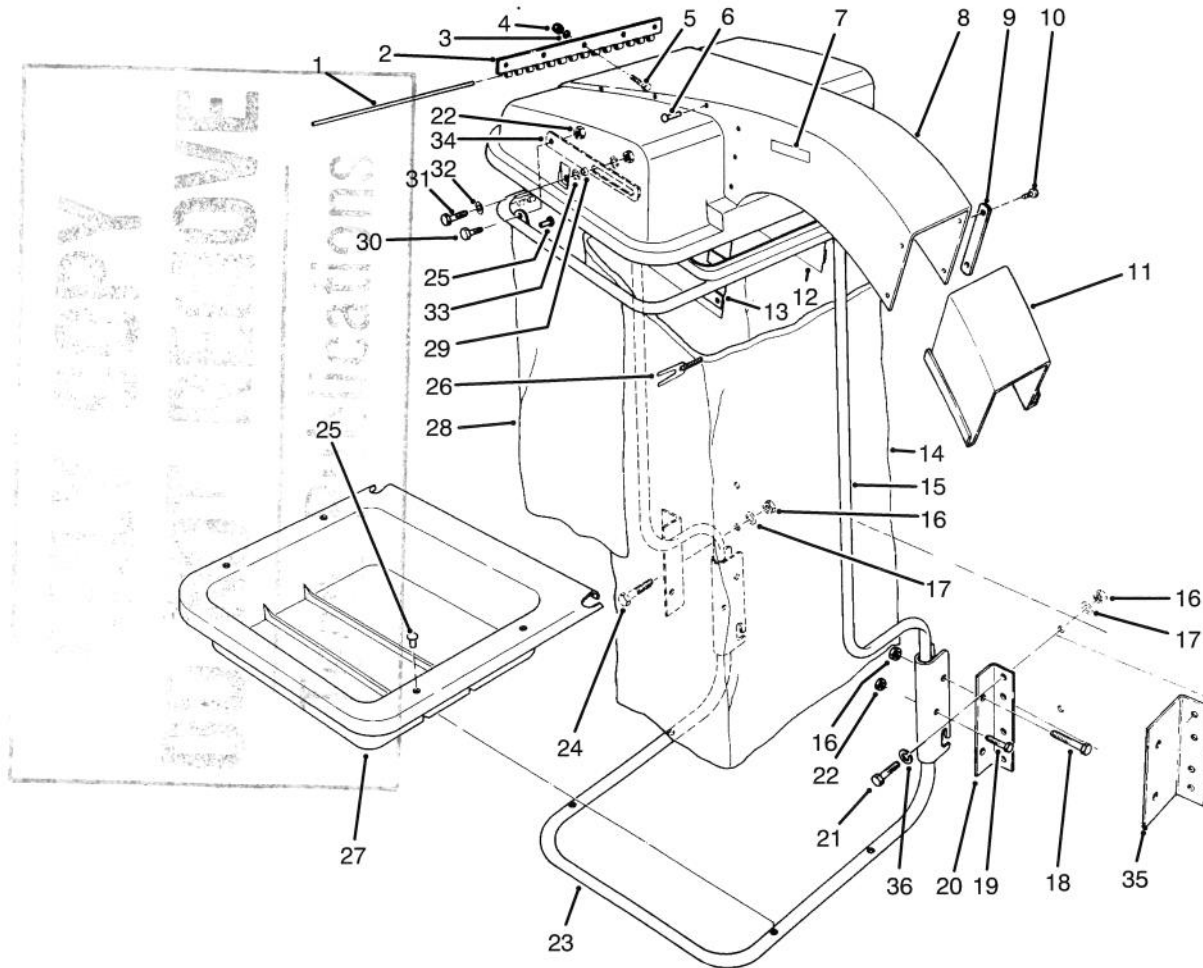




MODEL NO. 30504

PARTS
CATALOG

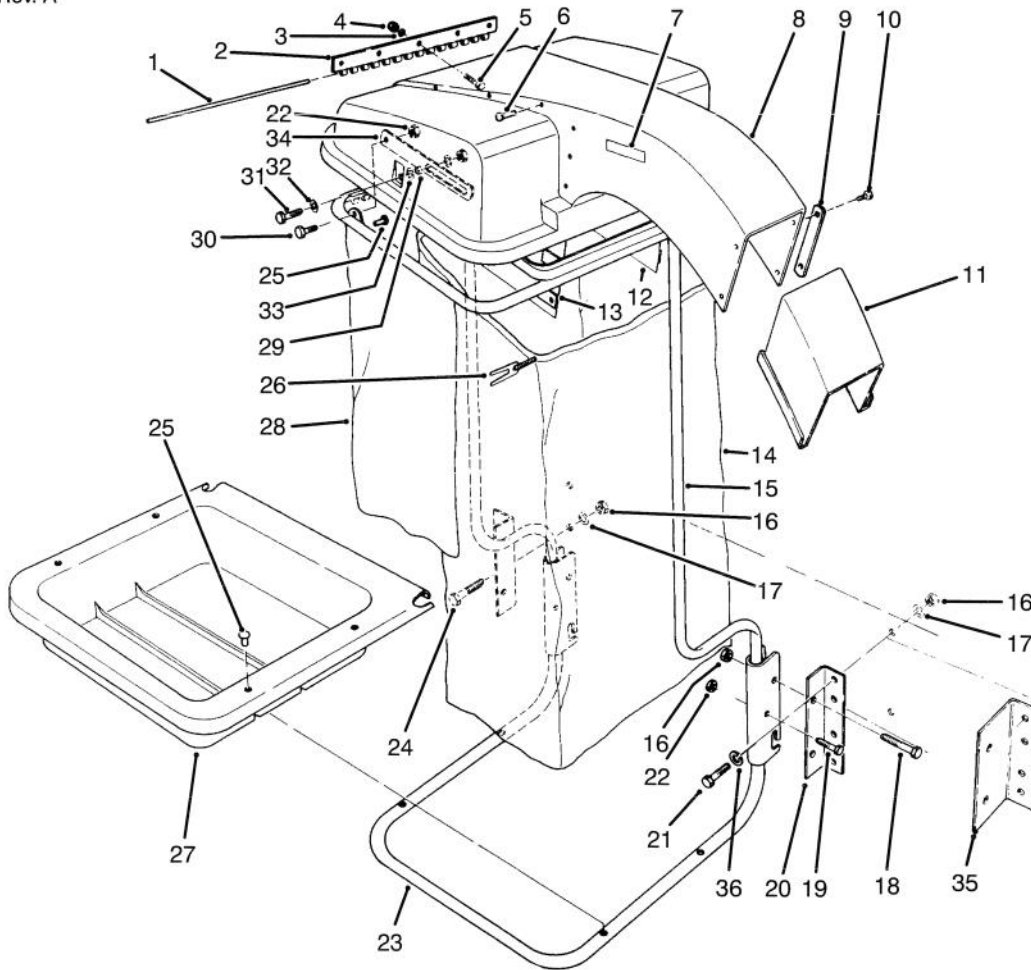
KIT 9 CU. FT. HOPPER



T-0603A

9 CU. FT. HOPPER ASSEMBLY

Ref. No.	Part No.	Description	No. Used	Ref. No.	Part No.	Description	No. Used
1	43-1000	Pin - Hinge, Hood	1	*14	43-0980	Bag - Cloth 38" (10 bushel capacity) (Optional)	1
2	43-0610	Hinge - Half	1	15	67-7500	Upper Support Tube Assy. (Incl. Ref. #25 & 28)	1
3	3256-14	Washer - Flat	5	16	32152-2	Nut - Lock	12
4	3296-2	Nut - Lock	5	17	3256-3	Washer - Flat	8
5	3290-134	Screw - Mach. Hex. Hd.	5	18	323-11	Screw - Cap Hex. Hd.	4
6	3290-412	Rivet - Pop	14	19	322-11	Screw - Cap Hex. Hd.	2
7	43-1100	Decal - Caution	2	20	43-1010	Bracket - Frame (For use with 52" Blower)	4
8	13-1649	Hood Assembly (Incl. Ref. #7)	1	21	323-7	Screw - Cap Hex. Hd.	7
9	67-1730	Plate - Nut	2	22	32152-1	Nut - Lock	6
10	3274-31	Screw - Button Head	4	23	43-0720	Lower Support Tube Assy. (Incl. Ref. #25 & 27)	1
11	77-0680	Extension - Snout	1	24	323-10	Screw - Cap Hex. Hd.	1
12	43-0600	Screen - Left Hand	1				
13	43-0570	Screen - Right Hand	1				
14	43-0990	Bag - Cloth 32" (7 bushel capacity)	1				



T-0603A

9 CU. FT. HOPPER ASSEMBLY (Continued)

Ref. No.	Part No.	Description	No. Used
25	3290-409	Rivet - Pop	21
26	3-2781	Retainer - Cord	1
*†	36-7770	Retainer - Cord (Optional)	1
27		Tray - Lower	1
28		Skirt - Bagging Frame	1
29	43-1020	Spacer - Pivot Arm	2
30	322-3	Screw - Cap Hex. Hd.	2
31	322-4	Screw - Cap Hex. Hd.	2

Ref. No.	Part No.	Description	No. Used
32	3256-23	Washer - Flat	2
33	3256-57	Washer - Fender	4
34	43-1051	Stop - Hood	2
35	76-1990	Bracket - Frame (For use with 62" Blower)	4
36	3253-21	Washer - Lock	2
*	44-9720	Template - Bracket	1

*Not Illustrated

†For use with 30 Gallon Plastic Bag.