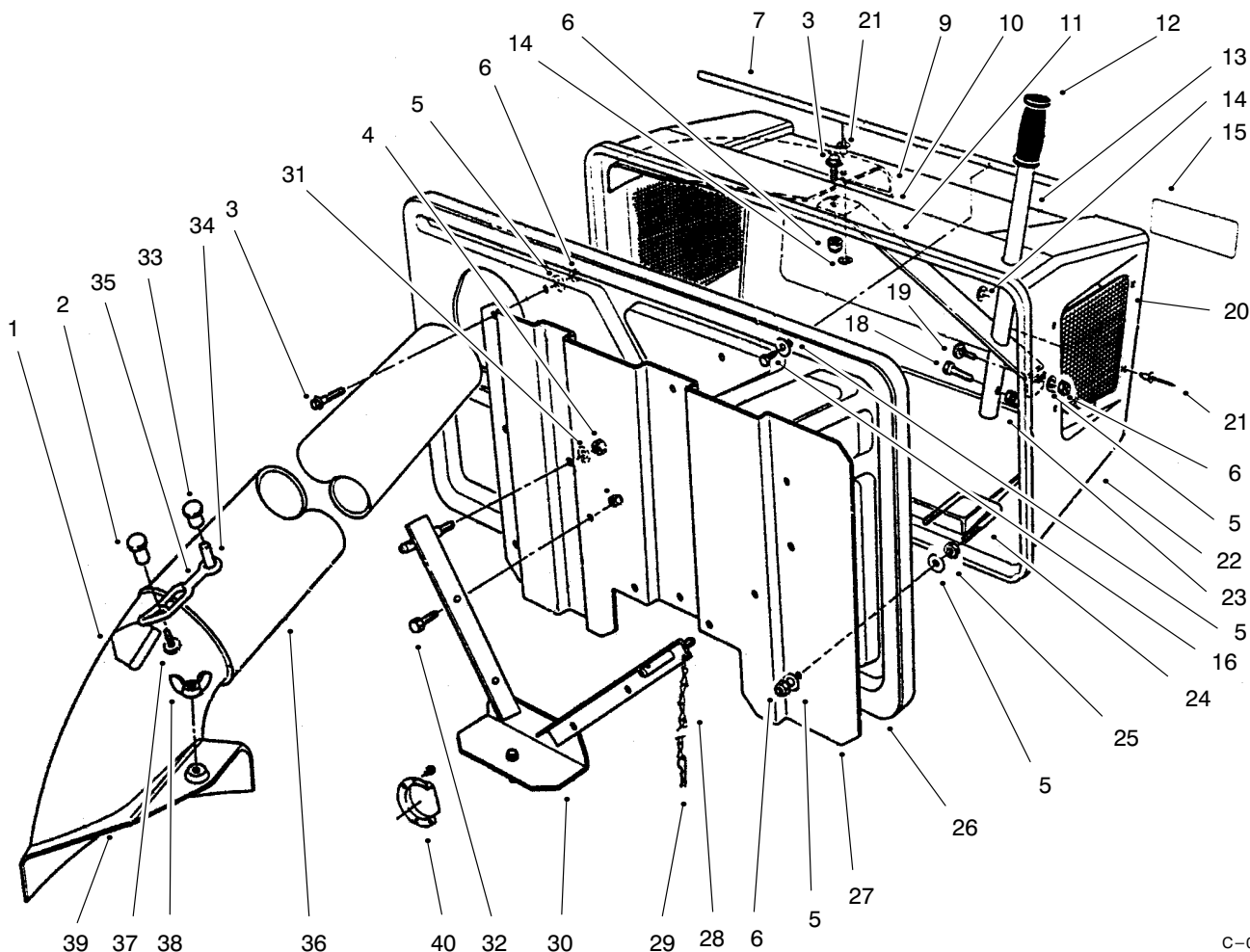


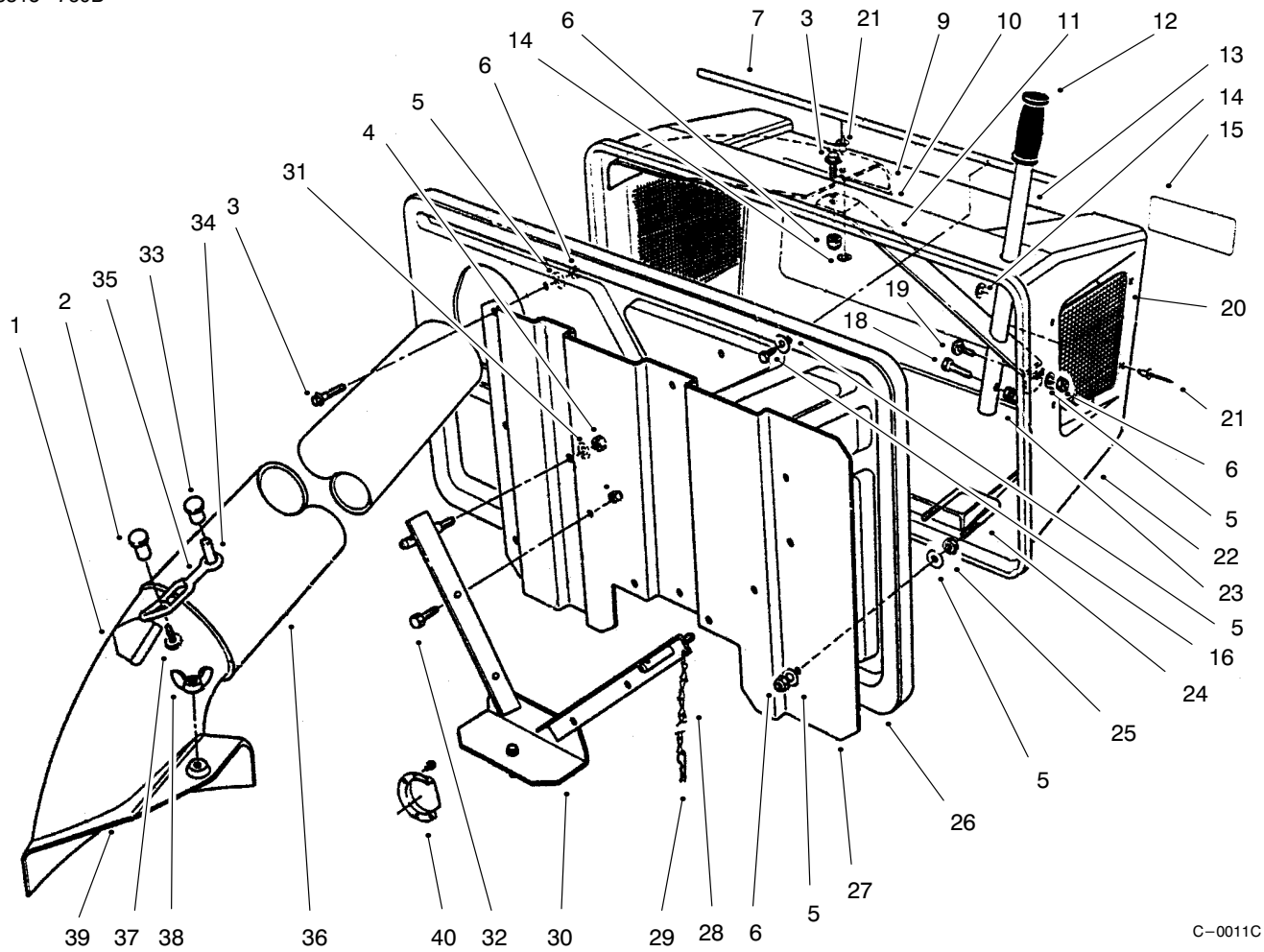
**8-25 EASY EMPTY®****Bagger****MODEL NO. 79090-3900001 Thru  
5900001 & UP****PARTS  
CATALOG**

C-0011C

**HOPPER ASSEMBLY**

Ref. No.	Part No.	Description	No. Used
1	54-9220	Decal - Chute	1
2	233-68	Knob	1
3	3234-5	Screw - Hex. Hd. Flange	8
4	3296-39	Nut - Lock	2
5	3256-2	Washer - Flat	13
6	3296-29	Nut - Lock	15
7	25-1360	Rod - Pivot	1
9	25-1470	Deflector	1
10	92-2511	Decal - Warning	1
11	25-1390	Guide - Handle	1
12	233-40	Grip - Handle	1
13	25-1380	Tube - Handle	1
14	3269-6	Washer - Backup, Rivet	14
15	92-1754	Decal - Easy Empty Bagger	1
16	321-30	Screw - Cap Hex. Hd.	2
18	321-8	Screw - Cap Hex. Hd.	1

Ref. No.	Part No.	Description	No. Used
19	3230-1	Bolt - Carriage	1
20	26-0010	Screen	2
21	3290-382	Rivet - Pop	14
22	25-1290	Hopper	1
23	32153-4	Nut - Lock	1
24	25-1370	Latch	1
25	3217-6	Nut - Hex.	2
26	67-9980	Cap	1
27	67-1540	Plate - Mounting	1
28	2830-10	Chain	2
29	3290-355	Pin - Hair, Cotter	2
30	67-9900	V-Bracket	1
31	3256-24	Washer - Flat	2
32	322-2	Screw - Cap Hex. Hd.	4
33	3290-479	Fastner - Panel	1
34	22-9741	Spacer	1



C-0011C

## HOPPER ASSEMBLY (Continued)

Ref. No.	Part No.	Description	No. Used
35	82-5690	Retainer – Duct	1
36	67-9890	Duct	1
37	32144-112	Screw	1
38	32103-14	Nut – Wing	1

Ref. No.	Part No.	Description	No. Used
39	67-1551	Chute (Incl. Ref. #1, 2 & 37)	1
40	2210-319	Deflector – Muffler	1