



1028LXE Power Max Snowthrower

Model No. 38641 - 250000001 and up.

Parts Catalog

Ordering Replacement Parts

To order replacement parts, please supply the part number, the quantity, and the description of each part desired.

Understanding Reference Numbers

Each identified part in an illustration has a reference number. The reference number for a part also appears in the parts list, along with other information about the part.

This catalog uses two special reference number formats, one to indicate parts in a service assembly and another to indicate the quantity of a given part in an illustration.

Service Assembly Reference Numbers

Parts in service assemblies have reference numbers in the form a:b. The a represents the reference number of the entire service assembly and the b represents a sequential number unique to each part within the service assembly.

For example, a wheel assembly might be identified by reference number 6, the tire by 6:1, the valve by 6:2, and the wheel by 6:3. When you order the assembly identified by reference number 6, you receive all parts identified by reference numbers 6:1, 6:2, and 6:3. However, you may also order any part individually. Reference numbers of this type appear in illustrations and in part lists.

Reference Numbers Indicating Quantity

In an illustration, if a reference number indicates more than one part, the reference number has the form nX y. The n represents the quantity of the part, the X is the multiplication symbol, and the y represents the reference number.

For example, in an illustration, the reference number 2X 37 means that two of the parts identified by reference number 37 are indicated.

Contents

Description	Page	Description	Page
Auger and Housing Assembly 3	Engine Assembly No. 1 Tecumseh HMSK-100 159495Y 14
28 Inch Auger Gearcase Assembly No. 106- 7254 4	Engine Assembly No. 2 Tecumseh HMSK-100 159495Y 16
Chute Assembly 5	Carburetor Part No. 640054 18
Frame Assembly 6	220 Volt Electric Starter Assembly No. 37102 Tecumseh HMSK-100 159495Y 19
Handle Control Assembly 8	Rewind Starter Assembly No. 590749 Tecumseh HMSK-100 159495Y 20
Handle and Control Assembly 9	Rewind Starter Assembly No. 590733 (Optional) Tecumseh HMSK-100 159495Y 21
Chute Control Assembly 10	Attachments and Accessories List 22
Engine Assembly 11		
Wheel Clutch Assembly 12		
Wheel Clutch Sprocket Assembly 13		

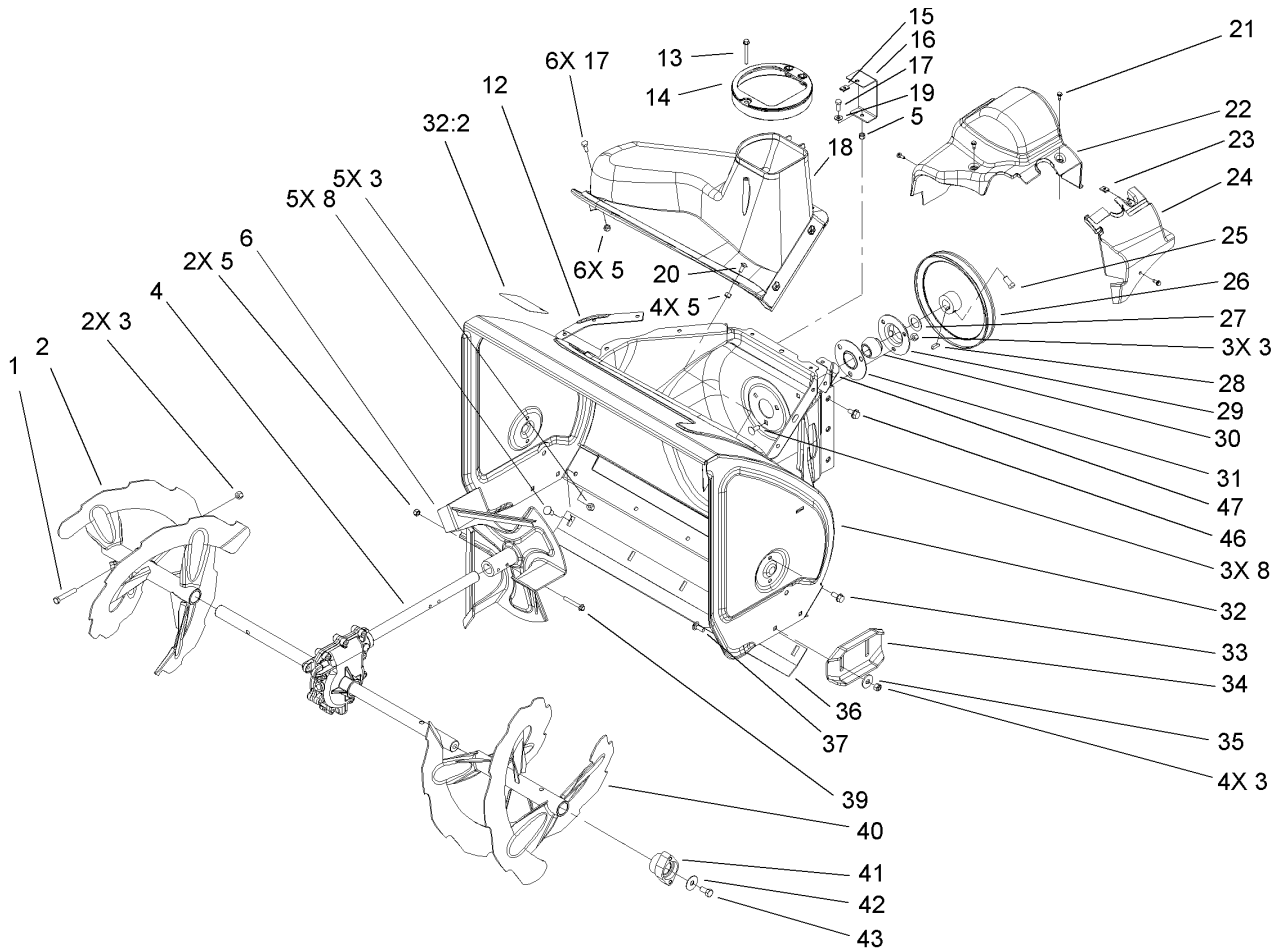
Part Description Abbreviations

Part descriptions in this catalog may include the following abbreviations.

AR. as required	HYD. hydraulic
ASM. assembly	LH. left hand
BBC. blade brake clutch	NI. nylon insert
CARR. carriage	NPTF. national pipe thread fine
DEG. degrees	PFH. phillips flat head
EXT. external	PPH. phillips pan head
FH. flat head	PPHTF. phillips pan head thread forming
GA. gauge	PRH. phillips round head
HD. heavy-duty	PTH. phillips truss head
HF. hex flange	PTO. power-take-off
HH. hex head	RH. right hand
HHF. hex head flange	ROPS. roll-over protection system
HHFTF. hex head flange thread forming	SFH. slotted fillister head
HJ. hex jam	SHH. slotted hex head
HLH. hex lag head	SHWH. slotted hex washer head
HOC. height-of-cut	SPH. slotted pan head
HSBH. hex socket button head	SQH. square head
HSFH. hex socket flat head	SRH. slotted round head
HSH. hex socket head	STD. standard
HWH. hex washer head	TAP. self tapping
HWHTF. hex washer head thread forming	TTH. torx truss head

Footnotes

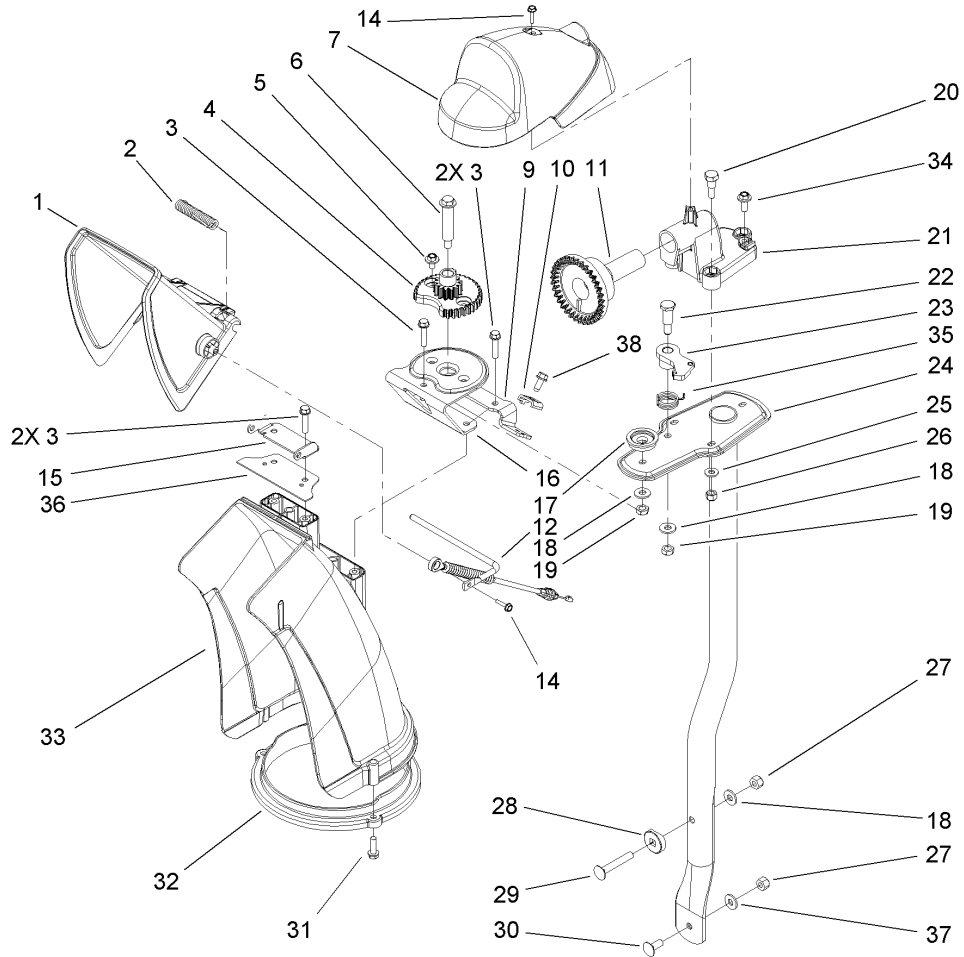
- ❶ Not serviced separately
- ❷ Obtain from your local Tecumseh dealer
- ❸ Included in gasket set 36452A



Auger and Housing Assembly

Ref	Part No.	Qty.	Description
1	322-10	2	Screw-HH
2	106-7291-03	1	Auger-RH
3	3296-29	14	Nut-Lock, NI
4	106-7254	1	Auger Gearcase ASM
5	3296-42	13	Nut-Lock, NI
6	106-4576-03	1	Impeller ASM
8	3230-23	8	Screw-CARR
12	107-1017-03	1	Seal-Flange, Cover
13	107-3003	1	Screw-Plastite
14	107-3006	1	Guide-Chute
15	107-1013	1	Nut-Speed, U-Type
16	107-1014-03	1	Bracket-Cover, Clip Nut
17	321-4	7	Screw-HH
18	108-0017	1	Cover
19	3256-22	1	Washer-Flat
20	3229-1	4	Screw-CARR
21	32144-112	4	Screw-HWH
22	107-1001	1	Cover-Belt
23	701493	1	Nut-Speed
24	107-1016	1	Cover-Extension, Belt
25	3242-4	2	Screw-Set, SQH
26	62-1300	1	Pulley-Impeller
27	252-80	1	Washer-Thrust
28	3257-23	1	Key-Woodruff

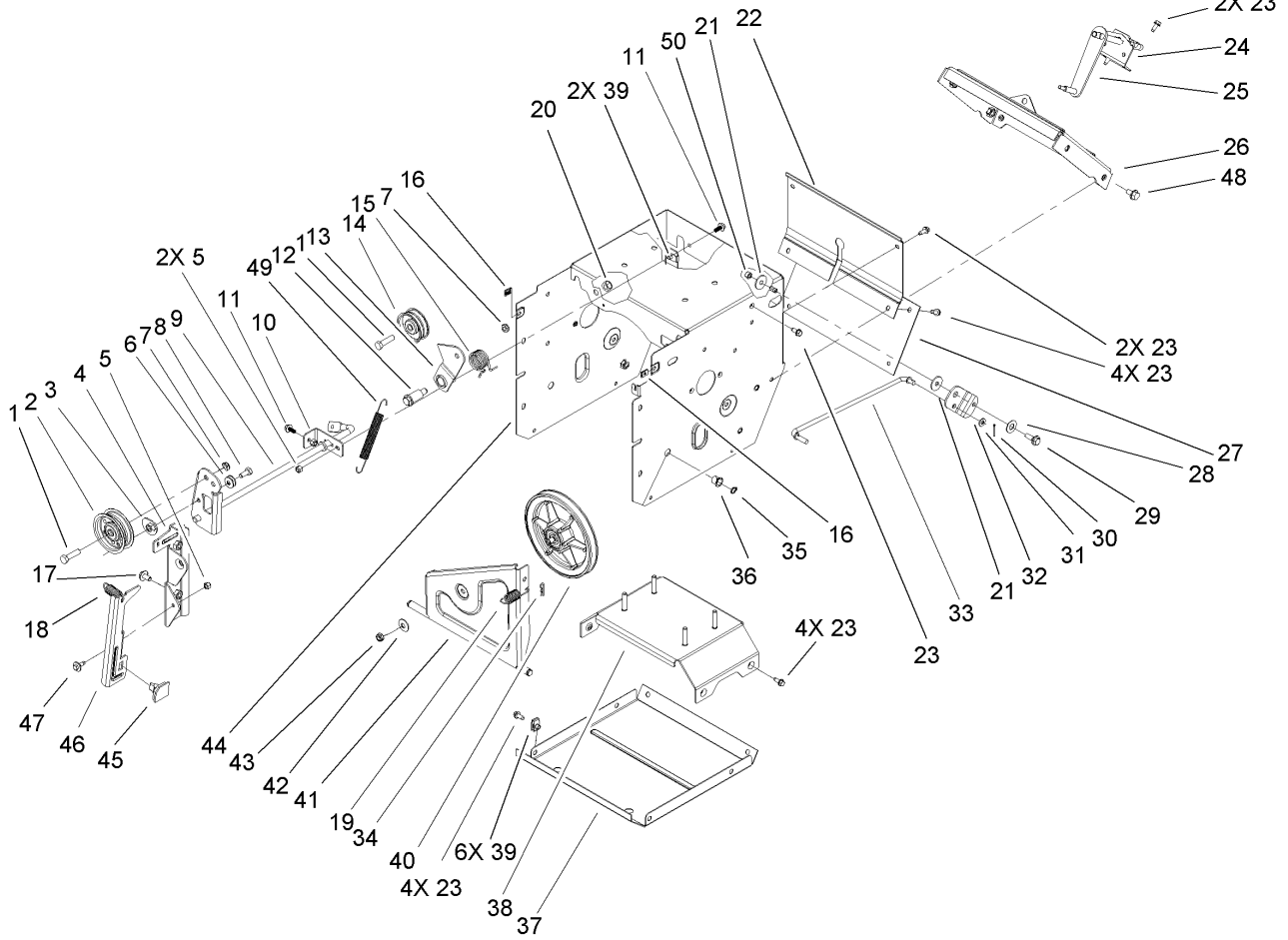
Ref	Part No.	Qty.	Description
29	26-6110	1	Flange-Cup, Bearing
30	63-3450	1	Bearing-Ball
31	26-6120	1	Flange-Cup, Bearing
32	107-3824	1	Housing- Auger, 28 Inch
32:2	107-3040	1	Decal-Danger, Auger
33	32144-70	4	Screw-HWHTF
34	106-4588-01	2	Skid
35	52-2861	4	Washer
36	106-4573-01	1	Scraper-Fixed
37	3230-16	4	Screw-CARR
39	321-44	2	Screw-HHF
40	106-7301-03	1	LH Auger ASM
41	106-4570	2	Auger-Bearing
42	3-0750	2	Washer
43	323-4	2	Screw-HH
46	32144-14	6	Screw-HWHTF
47	108-0039-03	1	Seal



Chute Assembly

Ref	Part No.	Qty.	Description
1	106-7309	1	Deflector-Chute
2	106-4594	1	Spring-Torsion
3	46-8092	5	Screw-Plastite
4	106-4472	1	Gear-Chute
5	46-6810	2	Screw And Washer ASM
6	100-9880	1	Bolt-Shoulder
7	106-4585	1	Cover-Gear, Chute
9	106-7296	1	Bracket-Cable, Clamp
10	106-7297	1	Clamp-Cable
11	106-4471	1	Gear-Face
12	107-1021	1	Rod-Deflector
14	98-1375	2	Screw-HWH
15	106-7266	1	Bracket-Deflector
16	106-4582-03	1	Bracket-Support, Chute
17	106-4422	1	Spacer-Chute
18	3256-2	3	Washer-Flat
19	3296-47	2	Nut-Lock, NI
20	106-7276	3	Screw-Shoulder
21	106-7257	1	Mount-Gear, Face
22	63-2650	1	Screw-Shoulder
23	106-4476	1	Latch-Chute
24	106-7253-03	1	Tube-Support
25	3256-22	3	Washer-Flat
26	3296-42	3	Nut-Lock, NI

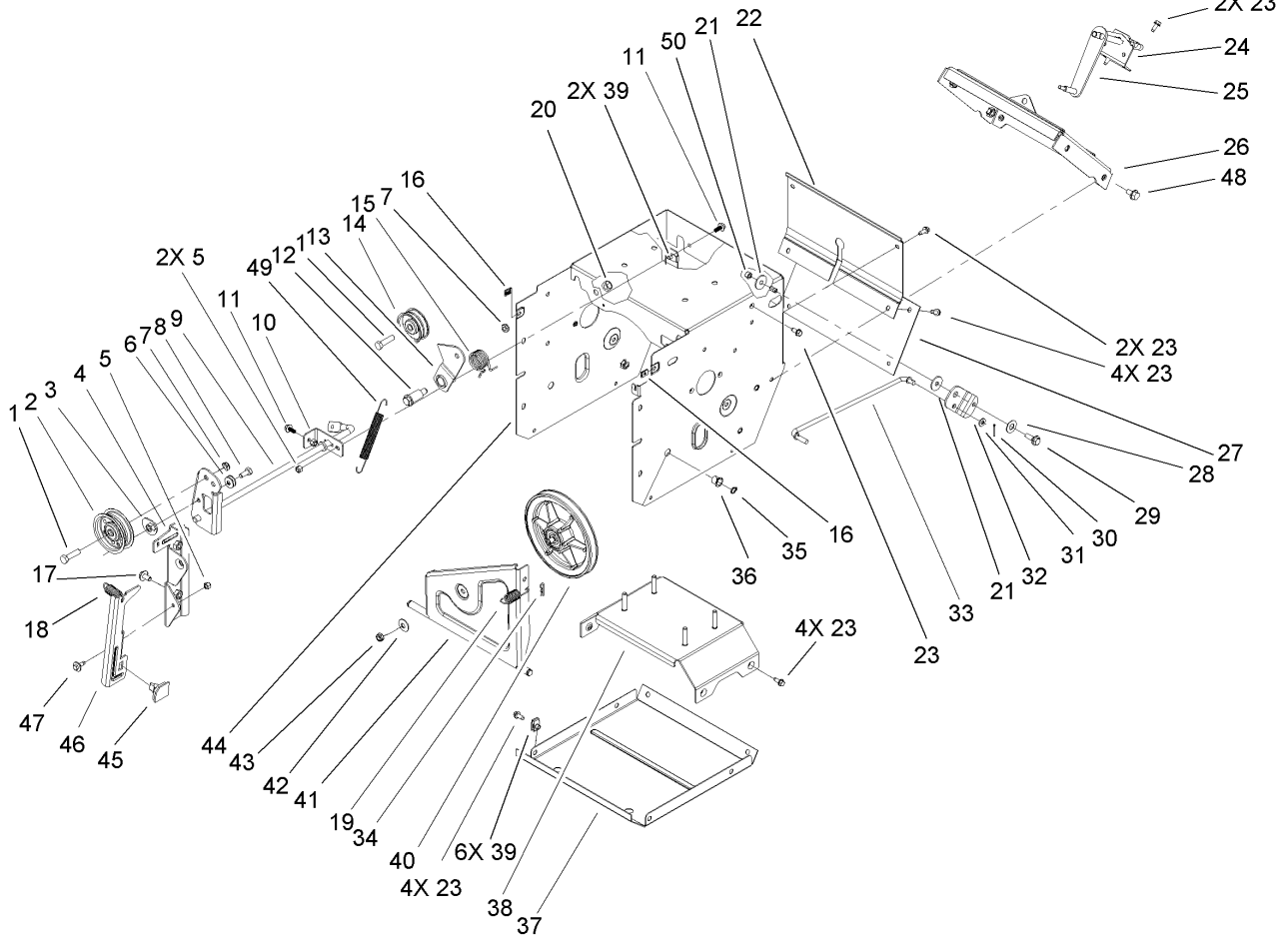
Ref	Part No.	Qty.	Description
27	3296-29	2	Nut-Lock, NI
28	106-7260	1	Washer-Curved
29	3230-5	1	Screw-CARR
30	3230-23	1	Screw-CARR
31	46-8091	3	Screw-HWH
32	105-9991	1	Ring-Chute
33	106-4440	1	Chute-Discharge
34	46-6811	1	Screw-HWH
35	106-4475	1	Spring-Torsion
36	107-1019	1	Seal-Chute
37	3290-456	1	Washer-Belleville
38	32144-10	1	Screw-HWH



Frame Assembly

Ref	Part No.	Qty.	Description
1	323-8	2	Screw-HH
2	92-7104	1	Pulley-Idler
3	107-1047	1	Nut
4	107-1039	1	Bracket-Idler, Impeller
5	3296-42	3	Nut-Lock, NI
6	3290-456	1	Washer-Belleville
7	3296-59	2	Nut-Lock, NI
8	322-3	1	Screw-HH
9	107-3838-03	1	Impeller Clutch ASM
10	106-7341	1	Bracket-Rear, Clutch
11	99-6810	2	Screw-HH
12	107-1022	1	Bolt-Shoulder
13	108-0011	1	Arm-Idler, Traction
14	3-4244	1	Pulley-Idler
15	108-0010	1	Spring-Torsion
16	107-1013	2	Nut-Speed, U-Type
17	3234-7	2	Screw-HHF
18	107-1045	1	Spring-Extension
19	107-1003	1	Spring-Extension
20	3296-76	1	Nut-Lock, NI
21	5-4460	2	Washer-Pivot
22	108-0022-01	1	Cover-Upper
23	32144-10	17	Screw-HWH
24	108-0036	1	Bracket-Rod, Shift

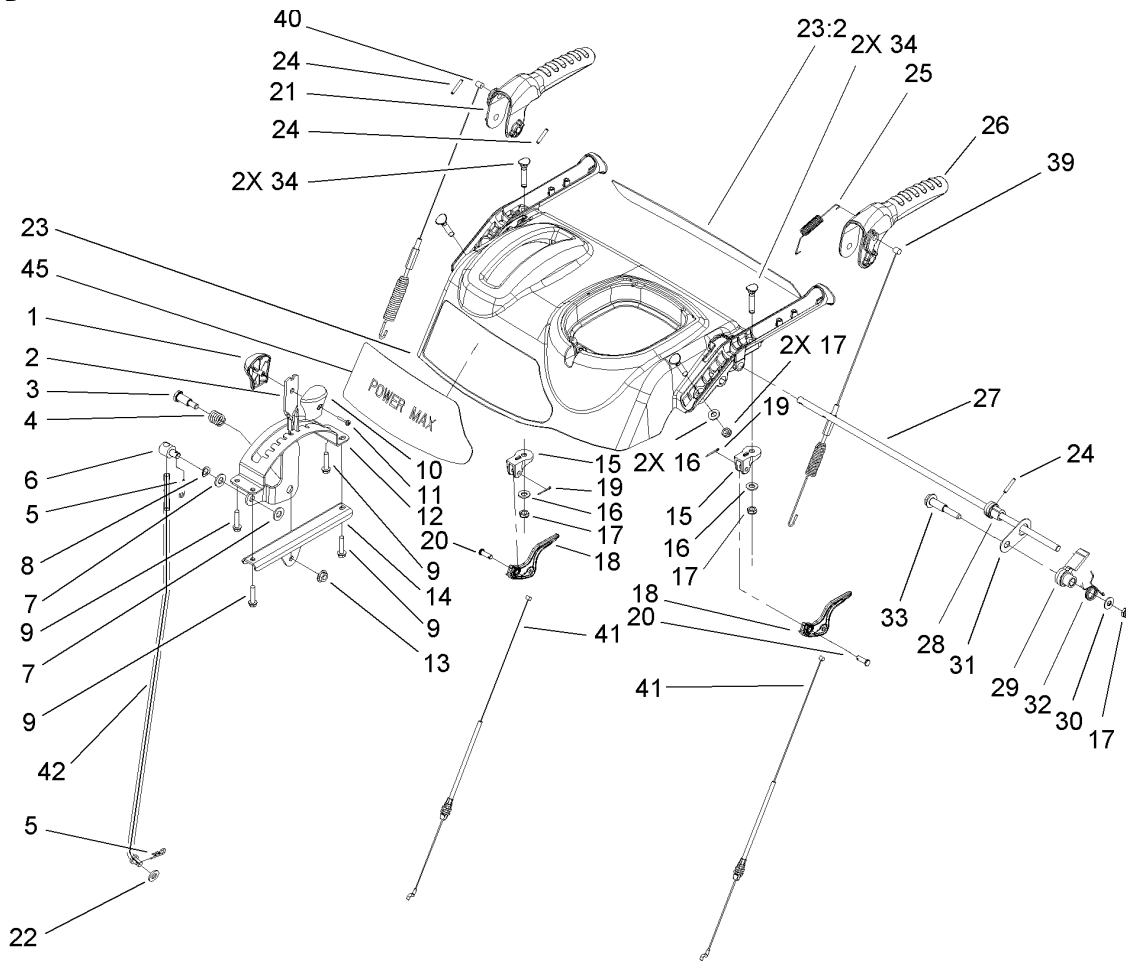
Ref	Part No.	Qty.	Description
25	106-7268	1	Lever-Control, Traction
26	108-0026-01	1	Shift Plate ASM
27	106-7345-01	1	Cover-Lower
28	25-5640	1	Washer
29	27-0410	1	Screw-Shoulder
30	3272-4	1	Pin-Cotter
31	3256-23	1	Washer-Flat
32	107-1011	1	Bellcrank-Drive
33	106-4467	1	Link-Control, Speed
34	3290-307	1	Pin-Hair
35	32151-61	2	Ring-Retaining
36	256-257	2	Bushing-Nyliner
37	106-7330-01	1	Pan-Bottom
38	106-7315	1	Brace Frame ASM
39	107069	8	Clip
40	108-0031	1	Traction Pulley ASM
41	108-0032	1	Pulley Pivot ASM
42	3290-340	1	Washer-Belleville
43	3296-5	1	Nut-Lock
44	108-0019-01	1	Traction Frame ASM
45	66-8060	1	Pad-Brake
46	107-1000	1	Arm-Brake
47	92-9698	1	Screw-Shoulder
48	32144-14	4	Screw-HWHTF



Frame Assembly (continued)

Ref	Part No.	Qty.	Description
49	108-2976	1	Spring-Extension
50	3296-29	1	Nut-Lock, NI

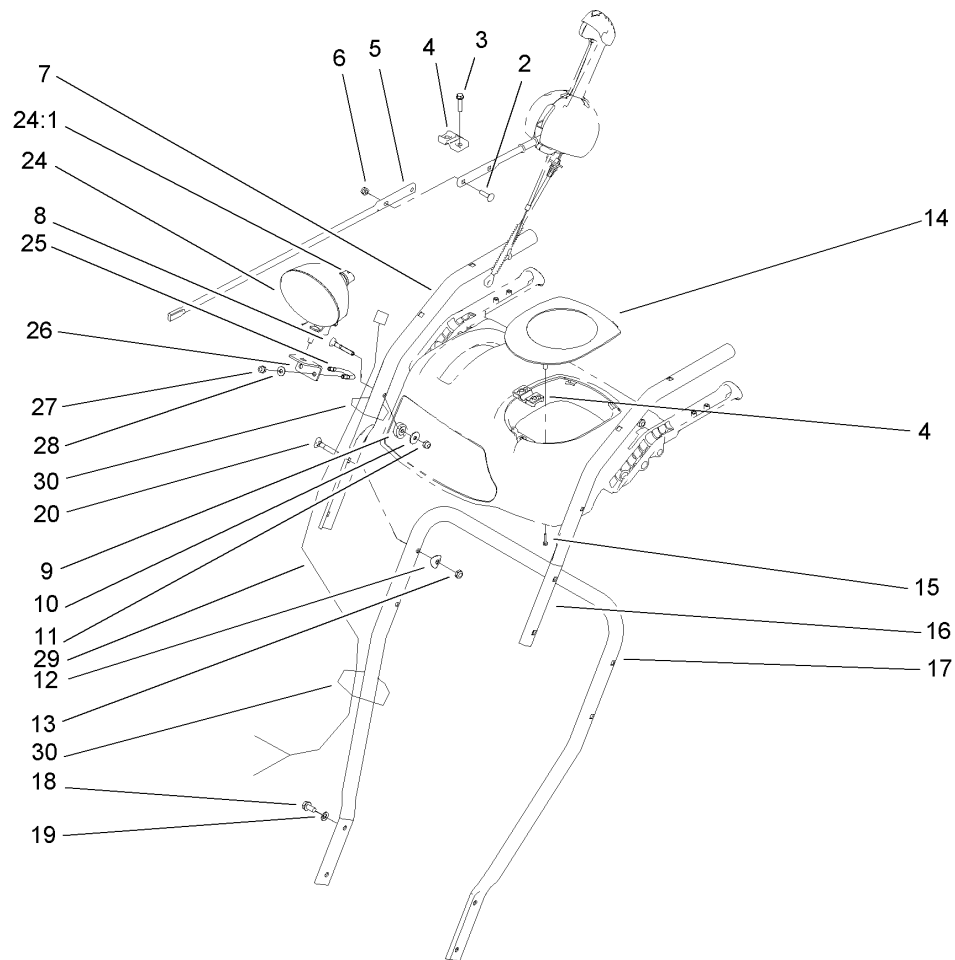
--	--	--	--



Handle Control Assembly

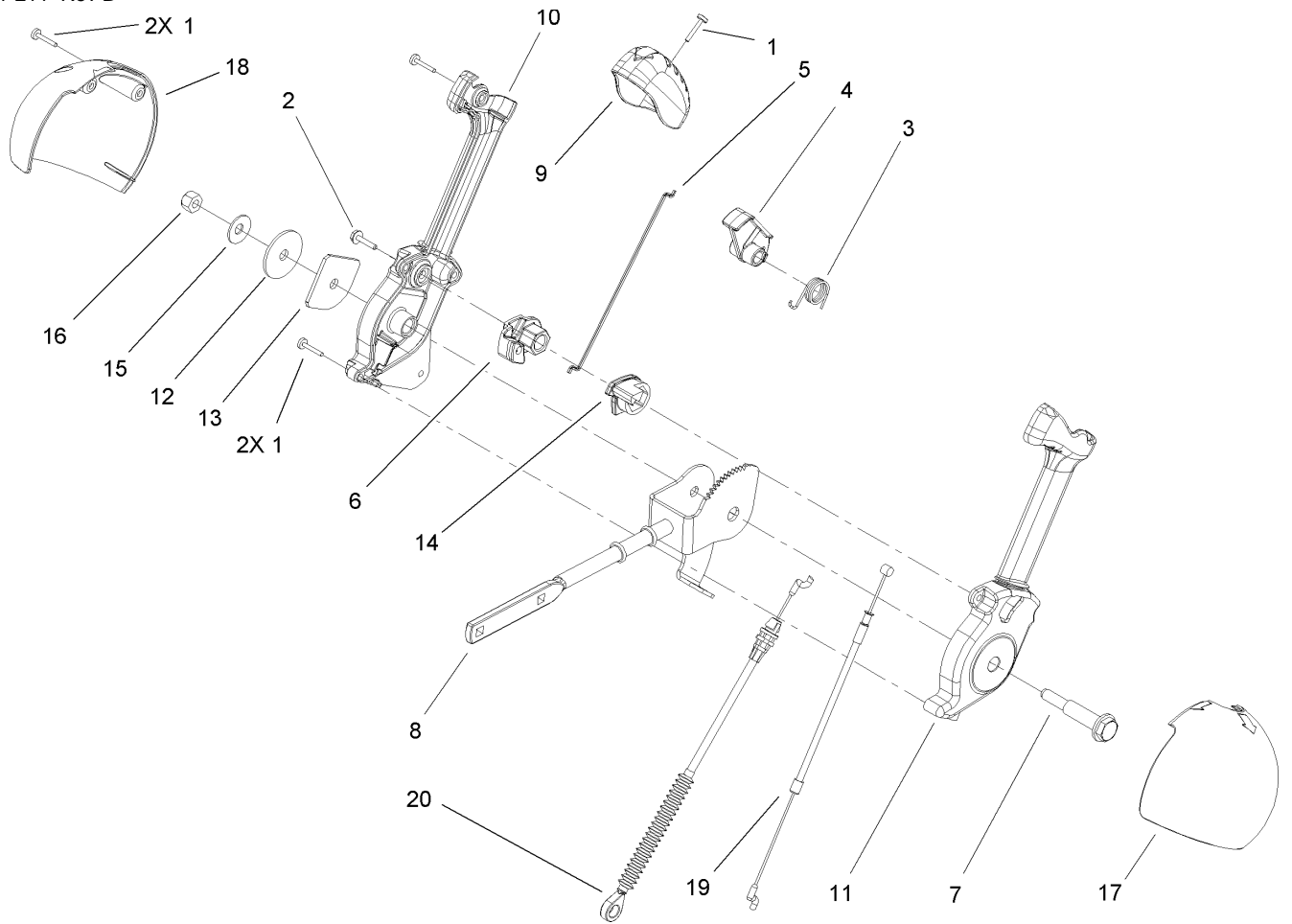
Ref	Part No.	Qty.	Description
1	106-4423	1	Knob-Shift, RH
2	106-7278-03	1	Selector-Speed
3	63-2650	1	Screw-Shoulder
4	107-3017	1	Spring-Compression
5	3290-307	2	Pin-Hair
6	101161	1	Trunnion
7	3256-24	2	Washer-Flat
8	612586	1	Washer-Spring
9	46-8092	4	Screw-Plastite
10	105-9999	1	Knob-Shift, LH
11	94-4496	1	Screw-PPH
12	106-7277-03	1	Guide-Selector, Speed
13	32128-13	1	Nut-HF
14	106-7279-03	1	Mount-Selector, Speed
15	105-9980	2	Mount-Clutch, Lever
16	3256-70	4	Washer-Flat
17	3296-72	5	Nut-Lock, NI
18	106-4505	2	Lever-Clutch
19	3272-4	2	Pin-Cotter
20	1-808265	2	Pin-Clevis
21	106-4413	1	Lever-Auger
22	3256-38	1	Washer-Flat
23	108-2970	1	Control Panel ASM
23:2	108-2968	1	Decal

Ref	Part No.	Qty.	Description
24	32121-125	3	Pin-Spring
25	107-3001	1	Spring-Tension
26	106-4410	1	Lever-Traction
27	105-9996	1	Rod-Lockout
28	107-1043	1	Cam-Lockout
29	108-0023	1	Latch-Lockout
30	98-3499	1	Washer-Flat
31	107-3000	1	Link-Lockout
32	108-0024	1	Spring-Torsion
33	106-4412	1	Screw-Shoulder
34	107-3018	4	Screw-Handle
39	106-4563	1	Cable-Traction
40	106-4599	1	Cable-Auger
41	107-8896	2	Cable-Clutch
42	107-1005	1	Rod-Shift
45	108-2965	1	Decal



Handle and Control Assembly

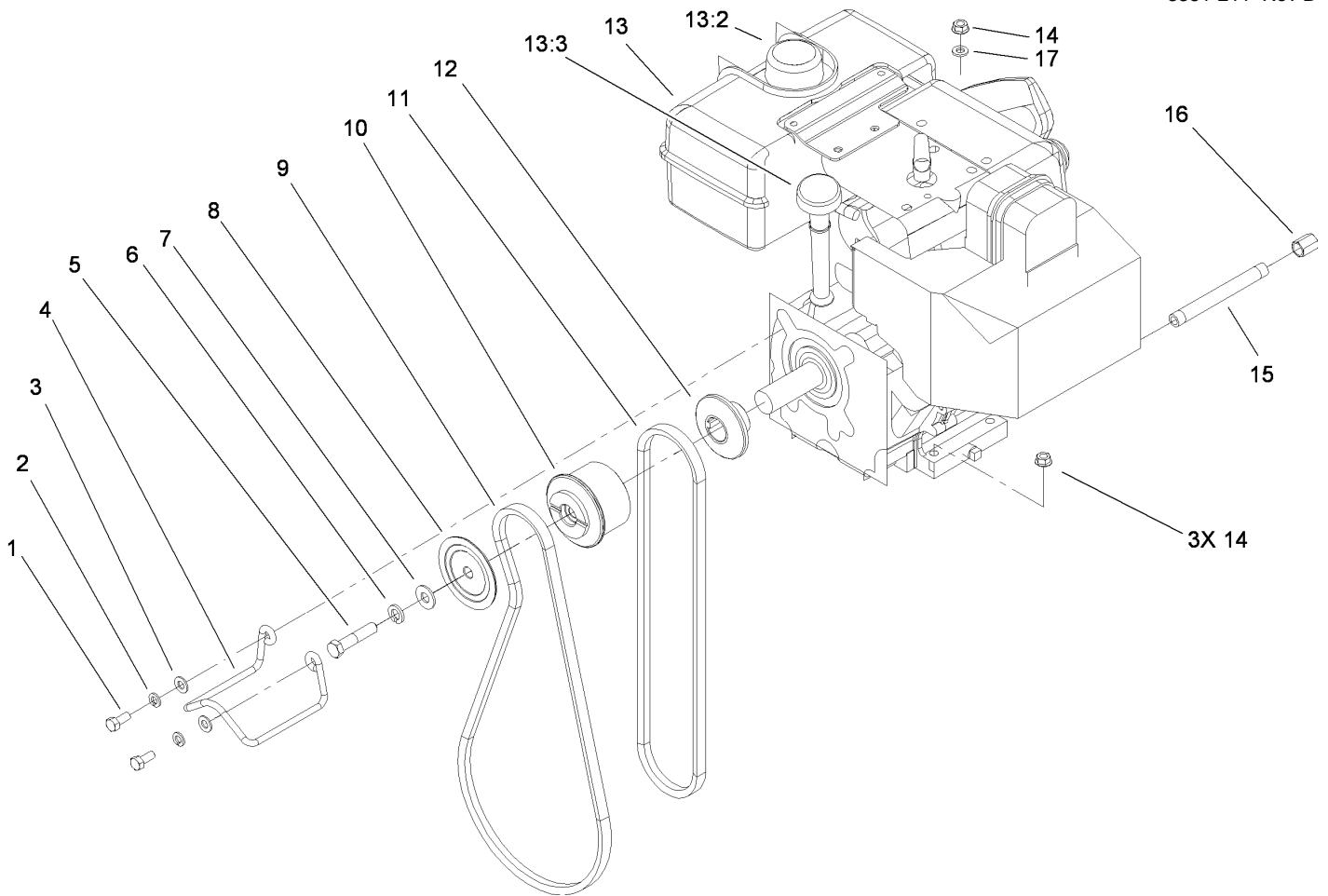
Ref	Part No.	Qty.	Description	Ref	Part No.	Qty.	Description
2	3229-30	2	Screw-CARR	28	3256-1	2	Washer-Flat
3	46-8092	2	Screw-Plastite	29	106-4511	1	Harness-Wire
4	105-9987	2	Support-Rod	30	614249	2	Strap-Tie
5	106-7283	1	Rod-Chute, Front				
6	3296-73	2	Nut-Lock, NI				
7	108-0038-03	1	Handle-Upper, RH				
8	95-4453	2	Screw				
9	106-4509	2	Clamp-Cable				
10	87-6630	2	Washer-Plain				
11	3296-73	2	Nut-Lock, NI				
12	107-3844	4	Washer				
13	3296-72	4	Nut-Lock, NI				
14	106-4586	1	Cover-Panel, Control				
15	94-4496	2	Screw-PPH				
16	108-0037-03	1	Handle-Upper, LH				
17	105-9981-03	1	Handle-Lower				
18	32144-14	4	Screw-HWHTF				
19	3290-475	4	Washer-Belleville				
20	92-2260	4	Screw-Handle				
24	106-4510	1	Headlamp ASM				
24:1	108-0008	1	Lamp-12 Volt				
25	107-3024	1	Clamp				
26	107-1020-03	1	Bracket-Light				
27	3296-73	2	Nut-Lock, NI				



Chute Control Assembly

Ref	Part No.	Qty.	Description
1	94-4496	5	Screw-PPH
2	98-1375	1	Screw-HWH
3	105-9982	1	Spring-Torsion
4	105-9984	1	Trigger-Latch
5	105-9985	1	Link-Latch
6	105-9988	1	Lever-Cable, Deflector
7	105-9995	1	Screw-Shoulder
8	106-4479	1	Rod-Control, Chute
9	106-7280	1	Cap-Lever
10	106-7281	1	Lever-Chute Control, RH
11	106-7282	1	Lever-Chute Control, LH
12	107-3002	1	Washer-Nylon
13	106-7295	1	Plate-Friction
14	106-7310	1	Pawl-Latch
15	3290-456	1	Washer-Belleville
16	3296-29	1	Nut-Lock, NI
17	105-9986	1	Cover-Chute Lever, LH
18	106-7292	1	Cover-Chute Lever, RH
19	105-9989	1	Cable-Release, Chute
20	105-9990	1	Cable-Control, Deflector

--	--	--	--

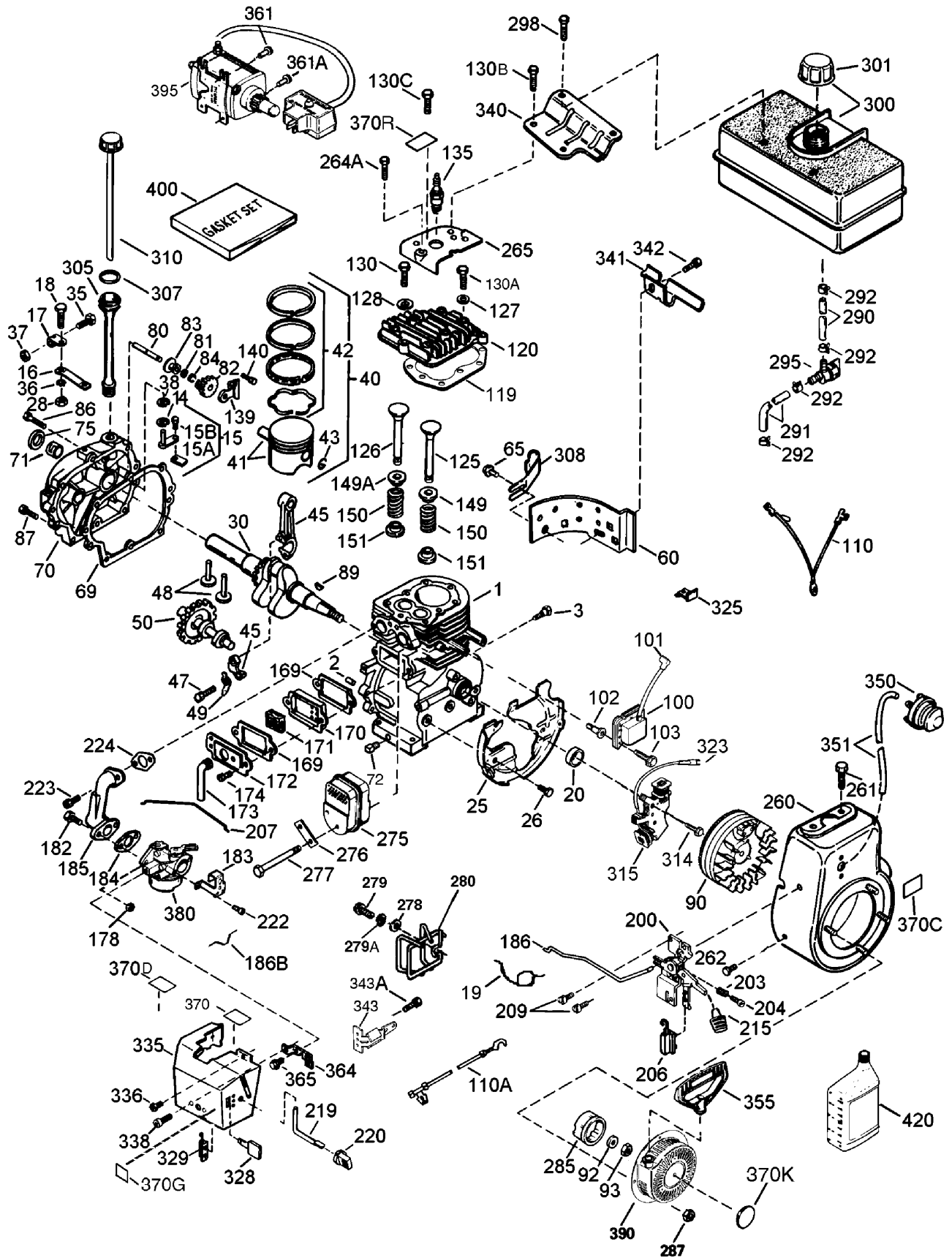


Engine Assembly

Ref	Part No.	Qty.	Description
1	3210-3	2	Screw-HH
2	3253-4	2	Washer-Lock
3	3256-23	2	Washer-Flat
4	107-3835	1	Guide-Belt
5	3212-8	1	Screw-HH
6	3253-6	1	Washer-Lock
7	3256-4	1	Washer-Flat
8	62-0940	1	Sheave-Half, Impeller
9	106-4498	1	Belt-V
10	106-7333	1	Pulley-Engine, Center
11	94-8812	1	V Belt-Traction
12	106-7334	1	Sheave-Half, Traction
13		1	Engine-Tecumseh, Hmsk100-159495Y
13:2	108-0000	1	Cap-Fuel
13:3	108-0002	1	Dipstick
14	32128-20	4	Nut-HF
15	289-34	1	Nipple-Pipe
16	288-2	1	Cap-Pipe
17	3256-2	1	Washer-Flat

Engine Assembly No. 1

Tecumseh HMSK-100 159495Y



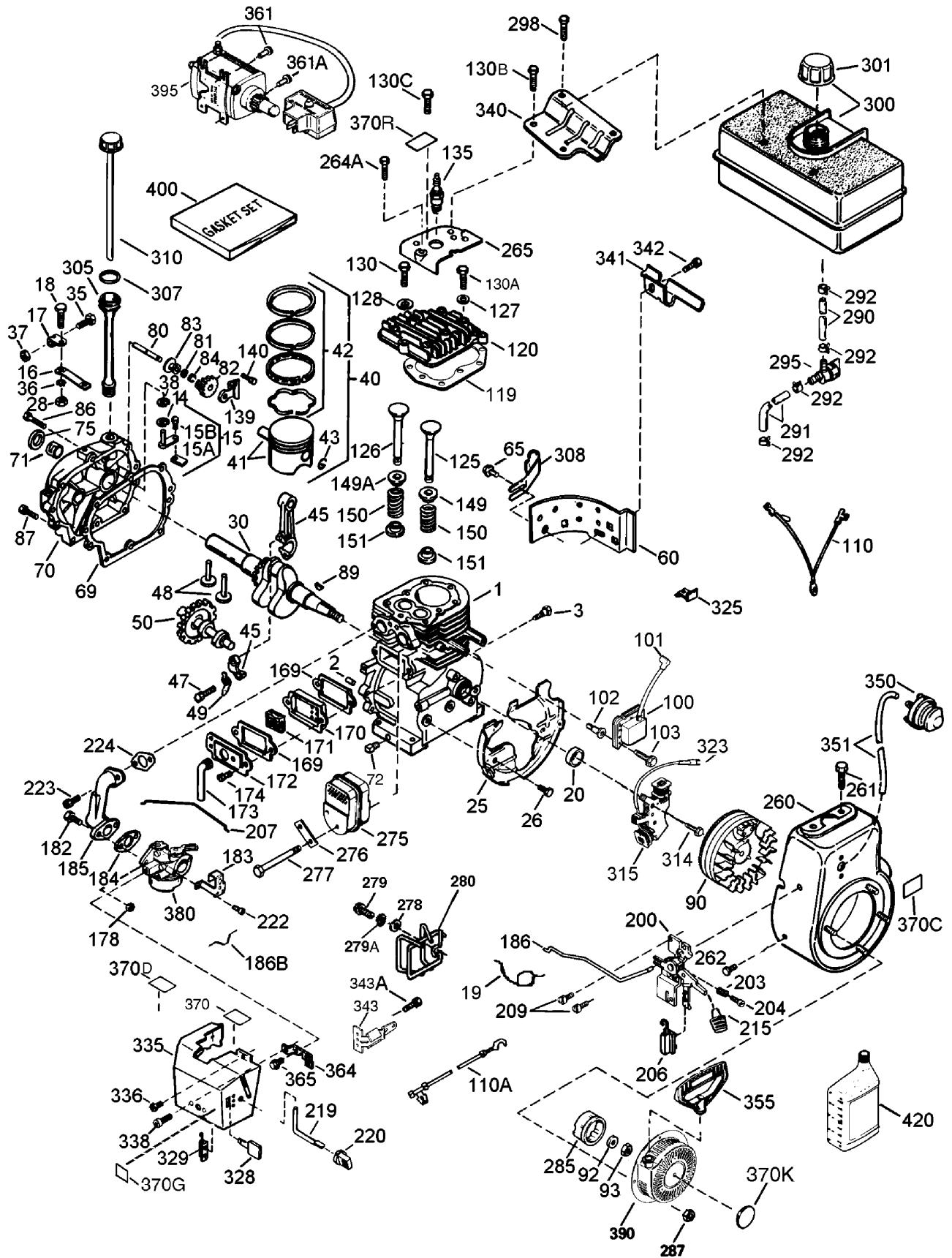
Engine Assembly No. 1

Tecumseh HMSK-100 159495Y

Ref	Part No.	Qty.	Description	Ref	Part No.	Qty.	Description
21	35371	1	Cylinder ASM (Incl. Ref. # 2, 20 And 72)	284	29193	1	Ring-Retaining
22	27652	2	Pin-Dowel	286	650833	7	Screw (1/4-20X1-3/16)
23	650820	2	Screw (1/4-20X1/2)	287	650832	1	Screw (1/4-20X1-11/16)
214	28277	1	Washer-Flat	289	32589	1	Key-Flywheel
215	30699C	1	Governor Rod ASM (Incl. Ref. #15A And 15B)	290	611093	1	Flywheel ASM
215A	30700	1	Yoke-Governor	292	650880	1	Washer-Belleville
215B	650494	1	Screw (6-40X5/16)	293	650881	1	Nut-Flywheel
216	33454A	1	Lever-Governor	2100	35135A	1	Solid State Ignition (Incl. Ref. #101)
217	29916	1	Clamp-Lever, Governor	2101	610118	1	Cover-Spark Plug
218	651028	1	Screw (T-15, 8-32X7/16)	2102	651024	2	Stud-Mounting, Solid State
219	34663	1	Spring-Throttle	2103	651007	2	Screw (T-15, 10-24 X 15/16)
220	35319	1	Seal-Oil	2110	35187	1	Wire-Ground
225	37707A	1	Blower Housing Baffle	2110A	37047	1	Wire-Ground
226	650561	2	Screw (1/4-20X19/32)	2119	36451	1	Gasket-Head, Cylinder
228	30322	1	Nut-Lock (8-32)	2120	36449	1	Head-Cylinder
230	35571A	1	Crankshaft	2125	27878A	1	Exhaust Valve (STD.) (Incl. Ref. #151)
235	29826	1	Screw (10-32X3/4)	2125	27880A	1	Exhaust Valve (1/32" Os) (Incl. Ref. #151)
236	29918	1	Washer-Lock (8)	2126	34035	1	Intake Valve (STD.) (Incl. Ref. #151)
237	29216	1	Nut-Lock (10-32)	2126	34036	1	Intake Valve (1/32" Os) (Incl. Ref. #151)
238	29642	1	Ring-Retaining	2127	650691	5	Washer-Flat
240	35776A	1	Piston Pin And Ring ASM (STD)	2128	650690	3	Washer-Belleville
240	35777A	1	Piston Pin And Ring ASM (.010)	2130	6021A	4	Screw (5/16-18X1-1/2)
240	35778A	1	Piston Pin And Ring ASM (.020)	2130A	650727	2	Screw (5/16-18X1-25/32)
241	35773A	1	Piston And Pin ASM (STD.) (Incl. Ref. #43)	2130B	650713	2	Screw
241	35774A	1	Piston And Pin ASM (.010" Os) (Incl. Ref. #43)	2130C	650694A	3	Screw (5/16-18 X 2)
241	35775A	1	Piston And Pin ASM (.020" Os) (Incl. Ref. #43)	2135	35395	1	Spark Plug-Resistor (R J19 L M)
242	35779	1	Ring Set (STD)	2139	33369	1	Bracket-Gear, Governor
242	35780	1	Ring Set (.010)	2140	650836	2	Screw (10-24X1/2)
242	35781	1	Ring Set (.020)	2149	27882	1	Cap-Spring, Valve
243	35772	2	Retaining Ring-Piston Pin	2149A	35862	1	Cap-Spring, Valve
245	36898	1	Connecting Rod ASM (Incl. Ref. #47 And 49)	2150	27881	2	Spring-Valve
247	651033	2	Bolt-Rod, Connecting	2151	32581	2	Keeper-Spring, Valve
248	34034	2	Lifter-Valve	2169	27896A	2	Gasket-Cover, Valve
249	36896	1	Dipper-Oil	2170	28423	1	Body-Breather
250	35375	1	Camshaft (Mcr)	2171	28424	1	Element-Breather
260	33273A	1	Extension-Housing, Blower	2172	28425	1	Cover-Valve
265	650128	1	Screw (10-24X1/2)	2173	35350	1	Tube-Breather
269	37342	1	Gasket-Cover, Cylinder	2174	650128	2	Screw (10-24X1/2)
270	35376A	1	Cylinder Cover ASM (Incl. Ref. #71, 75 And 80)	2178	29752	2	Nut And Lock Washer (1/4-28)
271	35377	1	Bushing-Crankshaft	2182	30088A	2	Screw (1/4-28X1)
272	27642	1	Plug-Drain, Oil (SQH 1/4-18)	2183	34587A	1	Bracket-Choke
275	35319	1	Seal-Oil	2184	33263	1	Gasket-Carburetor To Intake Pipe
280	37587	1	Shaft-Governor	2185	33877	1	Pipe-Intake
281	651080	1	Washer				
282	37588	1	Governor Gear ASM (Incl. Ref. #81)				
283	30588A	1	Spool-Governor				

Engine Assembly No. 2

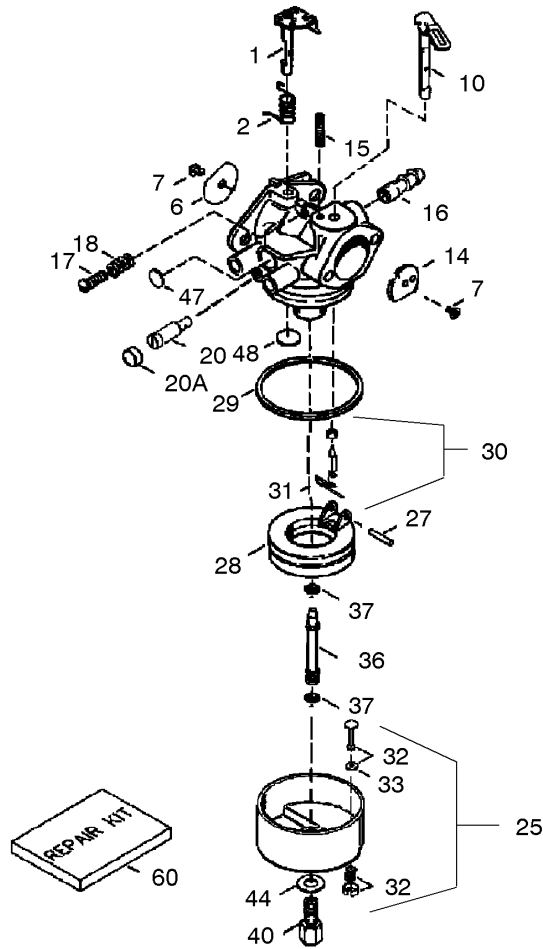
Tecumseh HMSK-100 159495Y



Engine Assembly No. 2

Tecumseh HMSK-100 159495Y

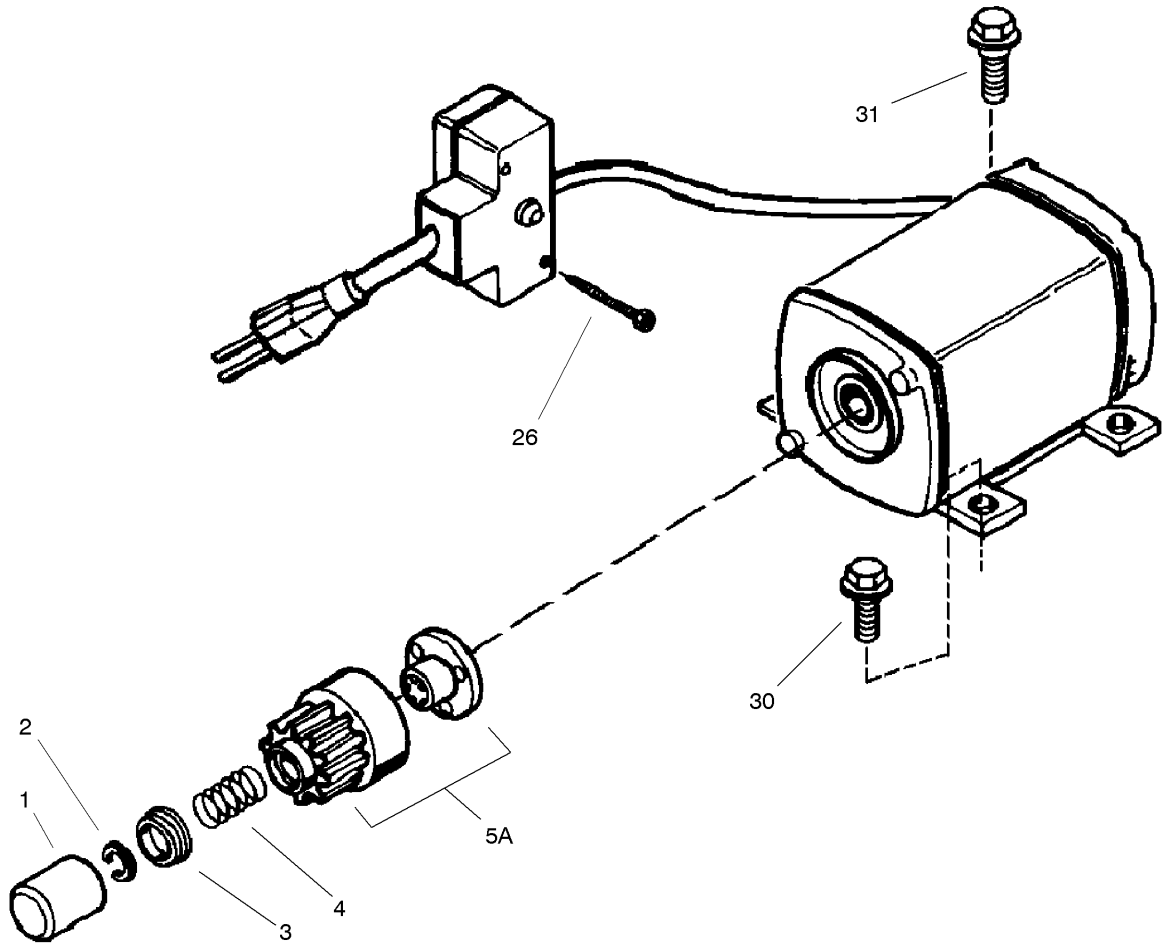
Ref	Part No.	Qty.	Description	Ref	Part No.	Qty.	Description
②186	34667	1	Link-Governor	②340	34155	1	Bracket-Tank, Fuel
②186B	36652	1	Spring-Choke	②341	34154	1	Bracket-Tank, Fuel (Black)
②200	34677	1	Control Bracket (Incl. Ref. #19, 203, 204 And 206)	②342	650561	1	Screw (1/4-20X19/32)
②203	31342	1	Spring-Compression	②343	35079A	1	Key Switch Bracket ASM (Incl. Ref. #343A)
②204	651029	1	Screw (T-10, 5-40X7/16)	②343A	651060	1	Screw (8-32 X 23/64)
②206	610973	1	Terminal	②350	570682A	1	Primer ASM
②207	33878	1	Link-Throttle	②351	32180C	1	Line-Primer
②209	650821	2	Screw (10-32 X 1/2)	②355	590574	1	Handle-Starter, Mitten Grip
②215	35440	1	Knob-Control	②361	650990	2	Screw (T-30, 1/4-20X15/32)
②219	34586	1	Rod-Choke	②361A	650819	2	Screw (6-32X2-1/2)
②220	35438	1	Knob-Control	②364	37659	1	Bracket-Cover, Carburetor
②222	28820	2	Screw (10-32 X 1/2)	②365	650767	2	Screw (8-32X27/64)
②223	650378	2	Screw (T-30, 5/16-18X1-3/32)	②370	36261	1	Decal-Lubrication
②224	27915A	1	Gasket-Pipe, Intake	②370C	36501	1	Decal-Primer, International Symbol
②260	35447A	1	Housing-Blower	②370D	36534	1	Decal-Instruction
②261	650788	2	Screw (5/16-18X3/4)	②370G	35077	1	Decal-Speed Control And Choke
②262	651084	2	Screw (5/16-18X9/16)	②370K	36695	1	Decal-Tecumseh Logo For Top Of Recoil Starter
②264A	650802	1	Screw (1/2-20X5/8)	②370R	37119	1	Decal-Warning (Bilingual)
②265	33272D	1	Cover-Head, Cylinder (Black)	②380	640054	1	Carburetor ASM (Incl. Ref. #184)
②275	35056	1	Muffler	②390	590749	1	Starter-Rewind
②276	31588	1	Plate-Locking	②395	37102	1	Electric Starter Motor ASM (220 Volt)
②277	651002	2	Screw (5/16-18X4-3/16)	②400	36452A	1	Gasket Set
②278	650147	2	Washer-Flat	②420	730226A	1	Oil-Engine, S A E 5W30
②279	650980	2	Screw (10-16 X 47/64)				
②279A	650979	2	Washer-Lock				
②280	36294	1	Heat Shield ASM (Incl. Ref. #278, 279 And 279A)				
②285	35985B	1	Cup-Starter				
②287	29752	4	Nut And Lock Washer (1/4-28)				
②290	29774	1	Line-Fuel (8.62)				
②291	30705	1	Line-Fuel				
②292	26460	4	Clamp-Line, Fuel				
②295	35857	1	Fuel Shut-Off Valve (Incl. Ref. #292)				
②298	650665	2	Screw (1/4-15X7/8)				
②300	34156A	1	Fuel Tank ASM (Incl. Ref. #292 And 301)				
②301	36246	1	Cap-Fuel				
②305	35554	1	Tube-Fill, Oil				
②307	35499	1	O-Ring				
②308	35540	1	Clip-Tube, Fill				
②310	36205	1	Gauge Oil ASM				
②314	650873	1	Screw (1/4-20 X 3/4)				
②315	611111	1	Alternator Coil ASM (18 Watt) (Incl. Ref. #323)				
②323	611118	1	Terminal				
②325	29443	1	Clip-Wire				
②328	35062	2	Key-Ignition				
②329	610973	1	Terminal				
②335	36547	1	Cover-Carburetor (Black)				
②336	650765	1	Screw (10-32X1/2)				
②338	28942	2	Screw (10-32 X 3/8)				



Carburetor Part No. 640054

Ref	Part No.	Qty.	Description
①	631776A	1	Throttle Shaft And Lever ASM
②	631970	1	Spring-Return, Throttle
⑥	631778	1	Shutter-Throttle
⑦	650506	2	Screw-Shutter
⑩	632112	1	Choke Shaft And Lever ASM
⑭	632174	1	Shutter-Choke
⑮	630735	1	Spring-Positioning, Choke
⑰	632164	1	Fitting-Fuel
⑰	650417	1	Screw-Throttle Crack Screw / Idle Speed
⑱	630766	1	Spring-Tension
⑳	640016	1	Screw-Restrictor, Idle
⑳A	640053	1	Cap-Screw, Idle Restrictor
㉕	631951	1	Float Bowl ASM (Incl. Ref. #32 & 33)
㉗	631024	1	Shaft-Float
㉘	632765	1	Float
㉙	631028	1	O Ring-Bowl, Float
㉚	631021	1	Inlet Needle, Seat, Clip (Incl. Ref. #31)
㉛	631022	1	Clip-Spring
㉜	27136A	1	Bowl Drain ASM
㉝	27554	1	Gasket-Plunger, Drain
㉞	640005	1	Tube-Nozzle, Main
㉟	632547	2	O-Ring

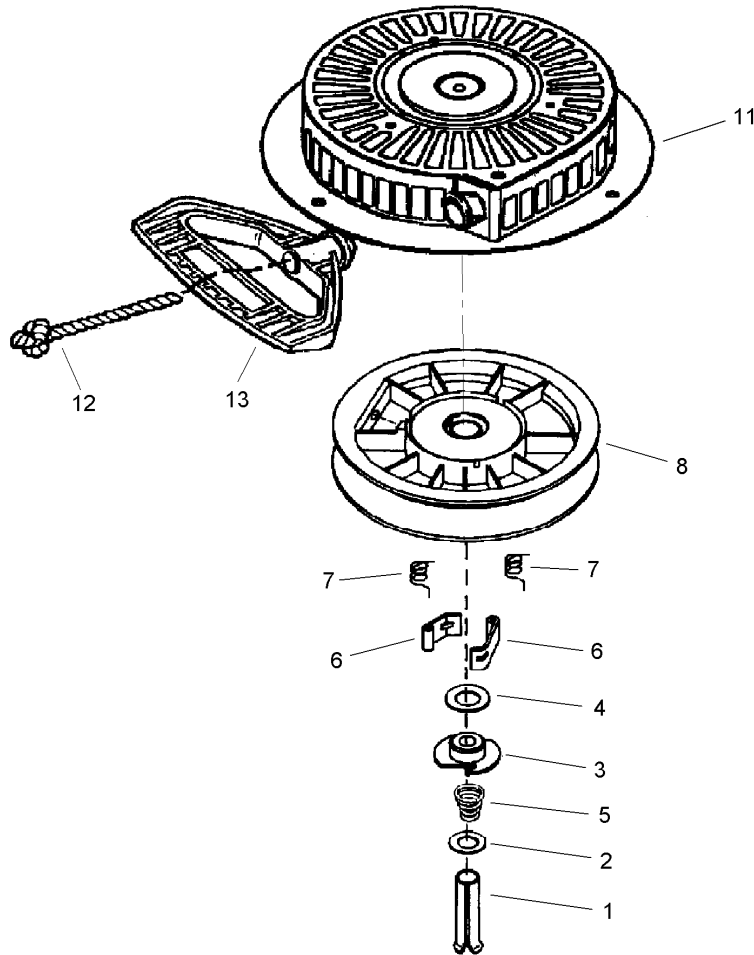
Ref	Part No.	Qty.	Description
㉠	640012	1	Nut-Bowl, High Speed
㉡	27110A	1	Washer-Nut, Bowl
㉢	630748	1	Plug-Welch, Idle Mixture Well
㉣	631027	1	Plug-Welch, Atmospheric Vent
㉥	632760	1	Repair Kit



220 Volt Electric Starter Assembly No. 37102 Tecumseh HMSK-100 159495Y

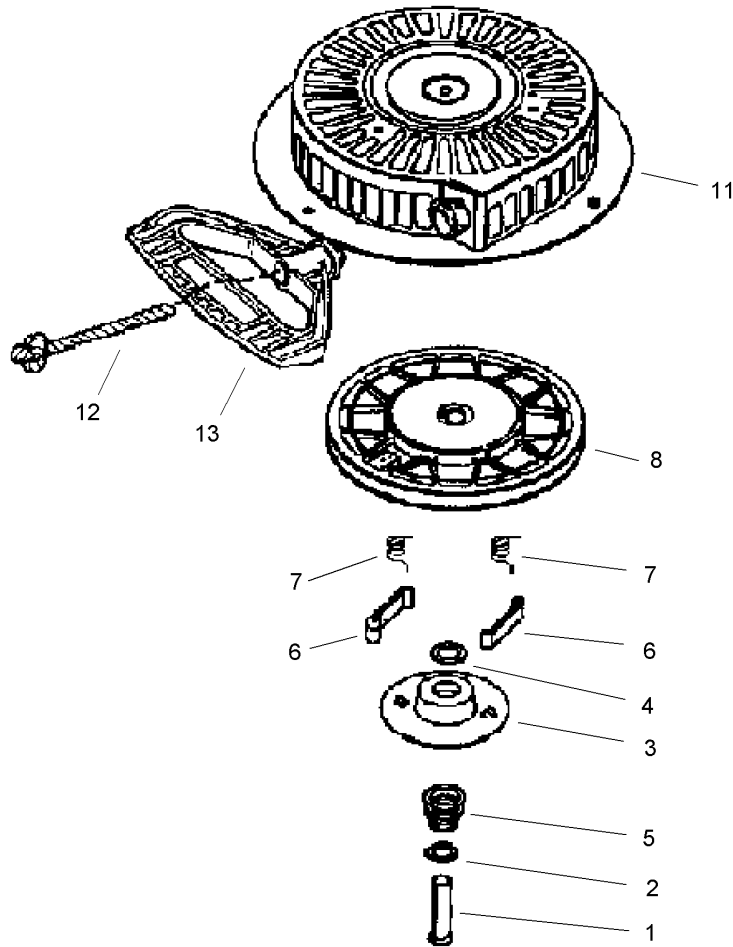
Ref	Part No.	Qty.	Description
●1	33451	1	Cover-Dust
●2	33842	1	Ring-Retainer
●3	33430	1	Retainer-Spring
●4	33431	1	Spring-Anti Drift
●5A	37050	1	Gear And Nut (Incl. Ref. #2)
●26	650819	2	Screw (6-32X2-1/2)
●26	651032	2	Screw (12-16 X 5/8)
●30	30063	2	Screw (T-30, 1/4-20X1/2)
●31	650820	2	Screw (1/4-20X1/2)

--	--	--	--



Rewind Starter Assembly No. 590749 Tecumseh HMSK-100 159495Y

Ref	Part No.	Qty.	Description				
①	590599A	1	Spring Pin (Incl. Ref. #4)				
②	590600	1	Washer				
③	590679	1	Retainer				
④	590601	1	Washer				
⑤	590678	1	Spring-Brake				
⑥	590680	2	Dog-Starter				
⑦	590412	2	Spring-Dog				
⑧	590682	1	Pulley And Rewind Spring ASM				
⑪	590750A	1	Starter Housing ASM				
⑫	590535	1	Rope-Starter (98 Cut To Length)				
⑬	590574	1	Handle-Starter, Mitten Grip				



Rewind Starter Assembly No. 590733 (Optional) Tecumseh HMSK-100 159495Y

Ref	Part No.	Qty.	Description				
①	590599A	1	Spring Pin (Incl. Ref. #4)				
②	590600	1	Washer				
③	590696	1	Retainer				
④	590601	1	Washer				
⑤	590697	1	Spring-Brake				
⑥	590698	2	Dog-Starter				
⑦	590699	2	Spring-Dog				
⑧	590709	1	Pulley And Rewind Spring ASM				
⑪	590734A	1	Starter Housing ASM				
⑫	590535	1	Rope-Starter (98 Cut To Length)				
⑬	590574	1	Handle-Starter, Mitten Grip				

Attachments and Accessories

For 38641 - Power Max 1028LXE Snowthrower

Product Name	Model/Part
Tire Chain Kit	107-3813
Snow Cab	107-3814
Weight Kit	107-3815
28 Inch Drift Breaker	107-3817

NOTES

