



828LXE Power Max Snowthrower

Model No. 38630 - 250000001 and up.

Parts Catalog

Ordering Replacement Parts

To order replacement parts, please supply the part number, the quantity, and the description of each part desired.

Understanding Reference Numbers

Each identified part in an illustration has a reference number. The reference number for a part also appears in the parts list, along with other information about the part.

This catalog uses two special reference number formats, one to indicate parts in a service assembly and another to indicate the quantity of a given part in an illustration.

Service Assembly Reference Numbers

Parts in service assemblies have reference numbers in the form a:b. The a represents the reference number of the entire service assembly and the b represents a sequential number unique to each part within the service assembly.

For example, a wheel assembly might be identified by reference number 6, the tire by 6:1, the valve by 6:2, and the wheel by 6:3. When you order the assembly identified by reference number 6, you receive all parts identified by reference numbers 6:1, 6:2, and 6:3. However, you may also order any part individually. Reference numbers of this type appear in illustrations and in part lists.

Reference Numbers Indicating Quantity

In an illustration, if a reference number indicates more than one part, the reference number has the form nX y. The n represents the quantity of the part, the X is the multiplication symbol, and the y represents the reference number.

For example, in an illustration, the reference number 2X 37 means that two of the parts identified by reference number 37 are indicated.

Contents

| Description | Page | Description | Page |
|--|----------|--|----------|
| Auger and Housing Assembly | 3 | Engine Assembly No. 1 Tecumseh HMSK-80 155672X | 14 |
| 28 Inch Auger Gearcase Assembly No. 106- 7254 | 4 | Engine Assembly No. 2 Tecumseh HMSK-80 155672X | 16 |
| Chute Assembly | 5 | Carburetor Assembly No. 640052 Tecumseh HMSK-80 155672X | 18 |
| Chain Drive Assembly | 6 | Electric Starter No. 33329E (110 Volt) Tecumseh HMSK-80 155672X | 19 |
| Wheel Clutch Sprocket Assembly | 7 | Rewind Starter No. 590749 Tecumseh HMSK- 80 155672X | 20 |
| Frame Assembly | 8 | Recoil Starter No. 590733 (Optional) Tecumseh HMSK-80 155672X | 21 |
| Handle and Control Assembly | 10 | Attachments and Accessories List | 22 |
| Handle, Headlamp and Control Assembly | 11 | | |
| Chute Control Assembly | 12 | | |
| Engine Assembly | 13 | | |

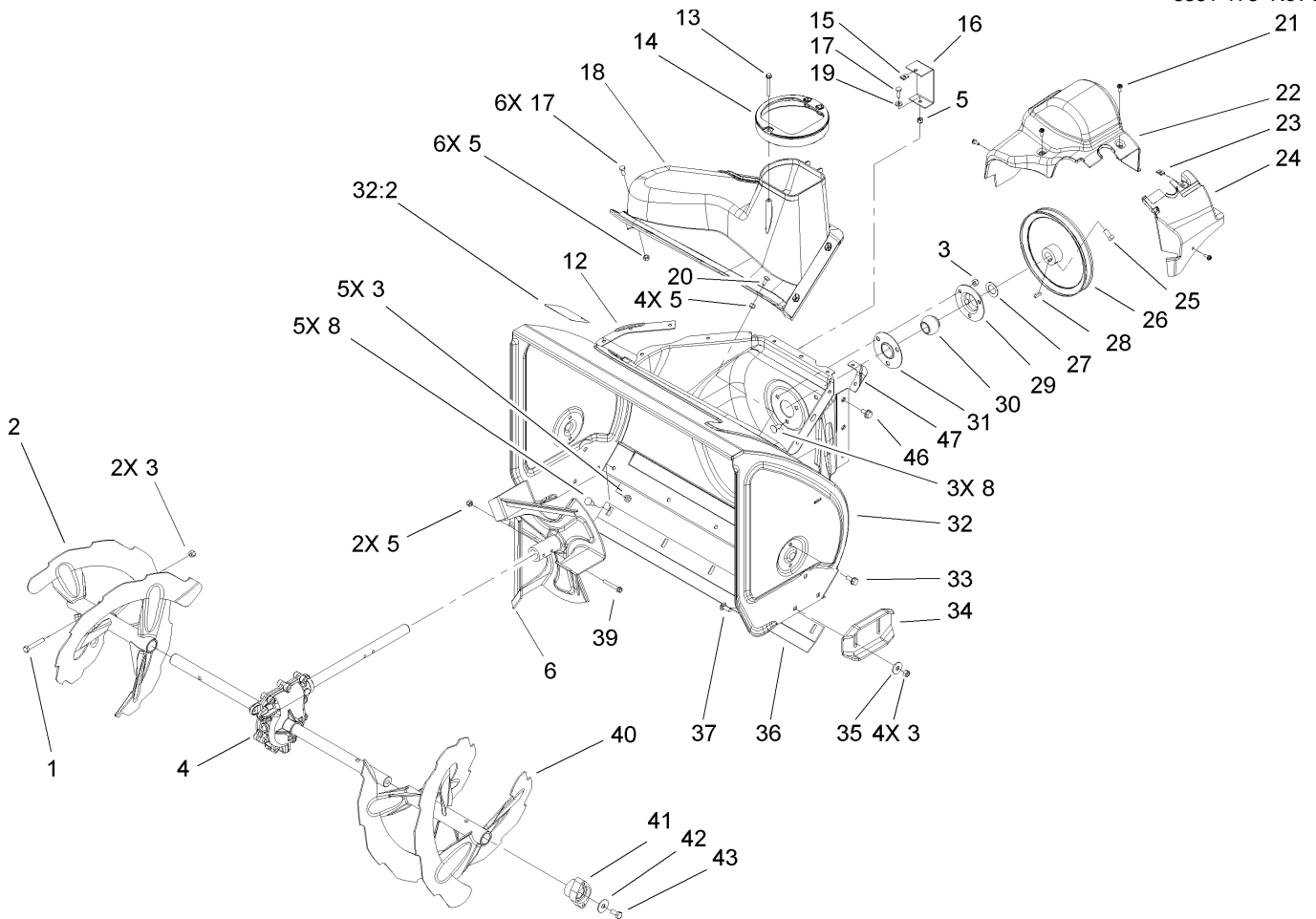
Part Description Abbreviations

Part descriptions in this catalog may include the following abbreviations.

| | |
|---|---|
| AR. as required | HYD. hydraulic |
| ASM. assembly | LH. left hand |
| BBC. blade brake clutch | NI. nylon insert |
| CARR. carriage | NPTF. national pipe thread fine |
| DEG. degrees | PFH. phillips flat head |
| EXT. external | PPH. phillips pan head |
| FH. flat head | PPHTF. phillips pan head thread forming |
| GA. gauge | PRH. phillips round head |
| HD. heavy-duty | PTH. phillips truss head |
| HF. hex flange | PTO. power-take-off |
| HH. hex head | RH. right hand |
| HHF. hex head flange | ROPS. roll-over protection system |
| HHFTF. hex head flange thread forming | SFH. slotted fillister head |
| HJ. hex jam | SHH. slotted hex head |
| HLH. hex lag head | SHWH. slotted hex washer head |
| HOC. height-of-cut | SPH. slotted pan head |
| HSBH. hex socket button head | SQH. square head |
| HSFH. hex socket flat head | SRH. slotted round head |
| HSH. hex socket head | STD. standard |
| HWH. hex washer head | TAP. self tapping |
| HWHTF. hex washer head thread forming | TTH. torx truss head |

Footnotes

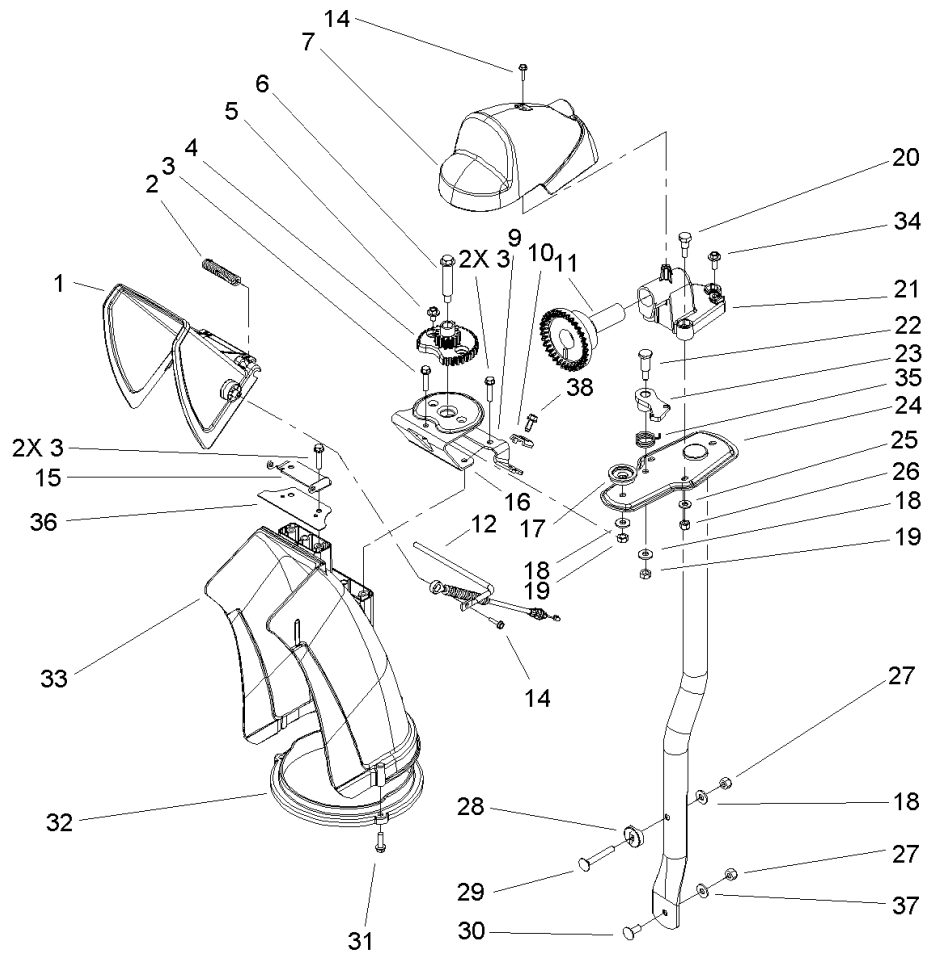
- | | |
|--|---------------------------------|
| ❶ Not illustrated | ❷ Not serviced separately |
| ❸ Obtain from your local Tecumseh dealer | ❹ Included in Gasket Set 36450C |
| ❺ Included in Gasket Set 36450C | |



Auger and Housing Assembly

| Ref | Part No. | Qty. | Description |
|-----|-------------|------|-------------------------|
| 1 | 322-10 | 2 | Screw-HH |
| 2 | 106-7291-03 | 1 | Auger-RH |
| 3 | 3296-29 | 14 | Nut-Lock, NI |
| 4 | 106-7254 | 1 | Auger Gearcase ASM |
| 5 | 3296-42 | 13 | Nut-Lock, NI |
| 6 | 106-4576-03 | 1 | Impeller ASM |
| 8 | 3230-23 | 8 | Screw-CARR |
| 12 | 107-1017-03 | 1 | Seal-Flange, Cover |
| 13 | 107-3003 | 1 | Screw-Plastite |
| 14 | 107-3006 | 1 | Guide-Chute |
| 15 | 107-1013 | 1 | Nut-Speed, U-Type |
| 16 | 107-1014-03 | 1 | Bracket-Cover, Clip Nut |
| 17 | 321-4 | 7 | Screw-HH |
| 18 | 108-0017 | 1 | Cover |
| 19 | 3256-22 | 1 | Washer-Flat |
| 20 | 3229-1 | 4 | Screw-CARR |
| 21 | 32144-112 | 4 | Screw-HWH |
| 22 | 107-1001 | 1 | Cover-Belt |
| 23 | 701493 | 1 | Nut-Speed |
| 24 | 107-1016 | 1 | Cover-Extension, Belt |
| 25 | 3242-4 | 2 | Screw-Set, SQH |
| 26 | 62-1300 | 1 | Pulley-Impeller |
| 27 | 252-80 | 1 | Washer-Thrust |
| 28 | 3257-23 | 1 | Key-Woodruff |

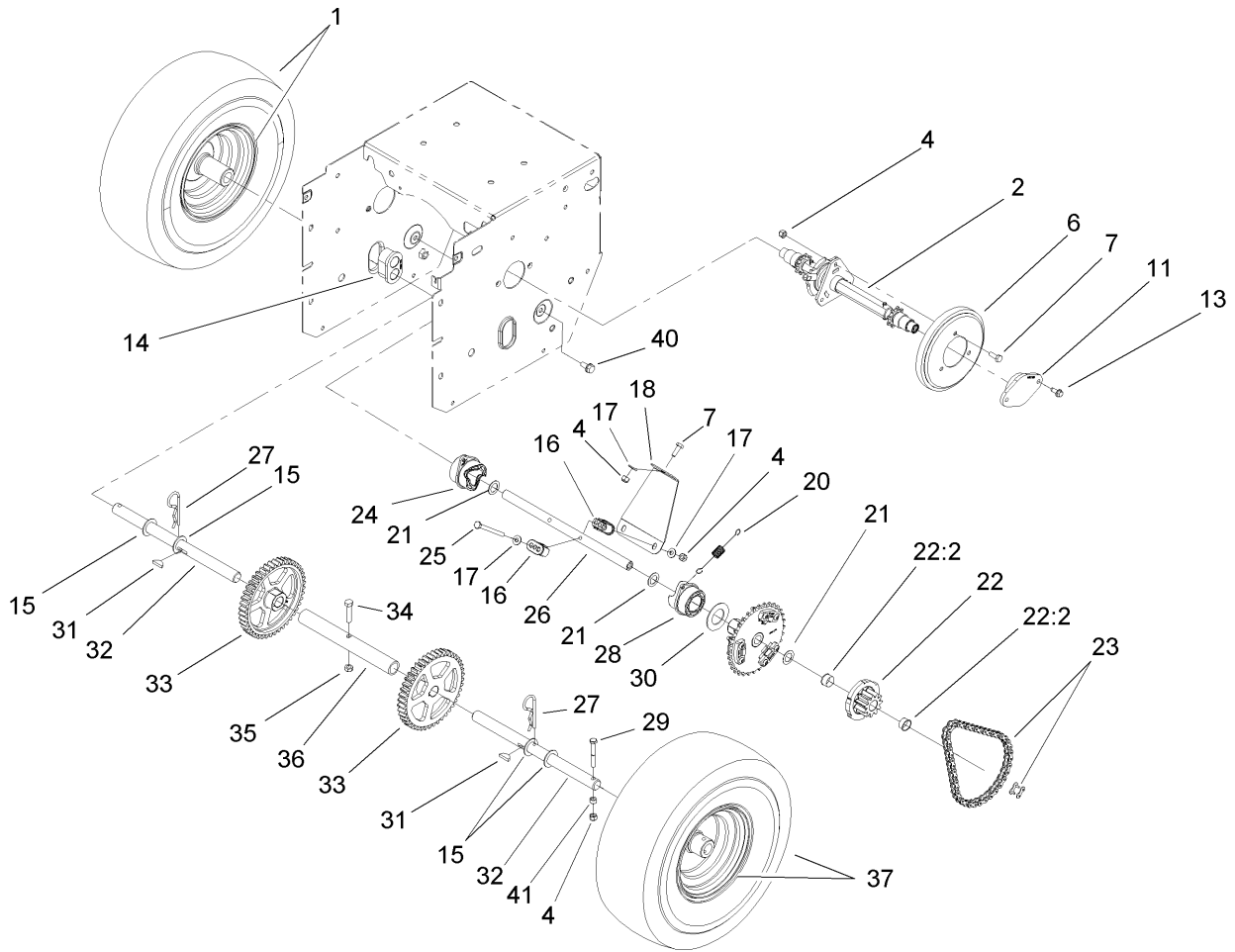
| Ref | Part No. | Qty. | Description |
|------|-------------|------|-------------------------|
| 29 | 26-6110 | 1 | Flange-Cup, Bearing |
| 30 | 63-3450 | 1 | Bearing-Ball |
| 31 | 26-6120 | 1 | Flange-Cup, Bearing |
| 32 | 107-3824 | 1 | Housing- Auger, 28 Inch |
| 32:2 | 107-3040 | 1 | Decal-Danger, Auger |
| 33 | 32144-70 | 4 | Screw-HWHTF |
| 34 | 106-4588-01 | 2 | Skid |
| 35 | 52-2861 | 4 | Washer |
| 36 | 106-4573-01 | 1 | Scraper-Fixed |
| 37 | 3230-16 | 4 | Screw-CARR |
| 39 | 321-44 | 2 | Screw-HHF |
| 40 | 106-7301-03 | 1 | LH Auger ASM |
| 41 | 106-4570 | 2 | Auger-Bearing |
| 42 | 3-0750 | 2 | Washer |
| 43 | 323-4 | 2 | Screw-HH |
| 46 | 32144-14 | 6 | Screw-HWHTF |
| 47 | 108-0039-03 | 1 | Seal |



Chute Assembly

| Ref | Part No. | Qty. | Description |
|-----|-------------|------|------------------------|
| 1 | 106-4587 | 1 | Deflector-Chute |
| 2 | 106-4594 | 1 | Spring-Torsion |
| 3 | 46-8092 | 5 | Screw-Plastite |
| 4 | 106-4472 | 1 | Gear-Chute |
| 5 | 46-6810 | 2 | Screw And Washer ASM |
| 6 | 100-9880 | 1 | Bolt-Shoulder |
| 7 | 106-4585 | 1 | Cover-Gear, Chute |
| 9 | 106-7296 | 1 | Bracket-Cable, Clamp |
| 10 | 106-7297 | 1 | Clamp-Cable |
| 11 | 106-4471 | 1 | Gear-Face |
| 12 | 107-1021 | 1 | Rod-Deflector |
| 14 | 98-1375 | 2 | Screw-HWH |
| 15 | 106-7266 | 1 | Bracket-Deflector |
| 16 | 106-4582-03 | 1 | Bracket-Support, Chute |
| 17 | 106-4422 | 1 | Spacer-Chute |
| 18 | 3256-2 | 3 | Washer-Flat |
| 19 | 3296-47 | 2 | Nut-Lock, NI |
| 20 | 106-7276 | 3 | Screw-Shoulder |
| 21 | 106-7257 | 1 | Mount-Gear, Face |
| 22 | 63-2650 | 1 | Screw-Shoulder |
| 23 | 106-4476 | 1 | Latch-Chute |
| 24 | 106-7253-03 | 1 | Tube-Support |
| 25 | 3256-22 | 3 | Washer-Flat |
| 26 | 3296-42 | 3 | Nut-Lock, NI |

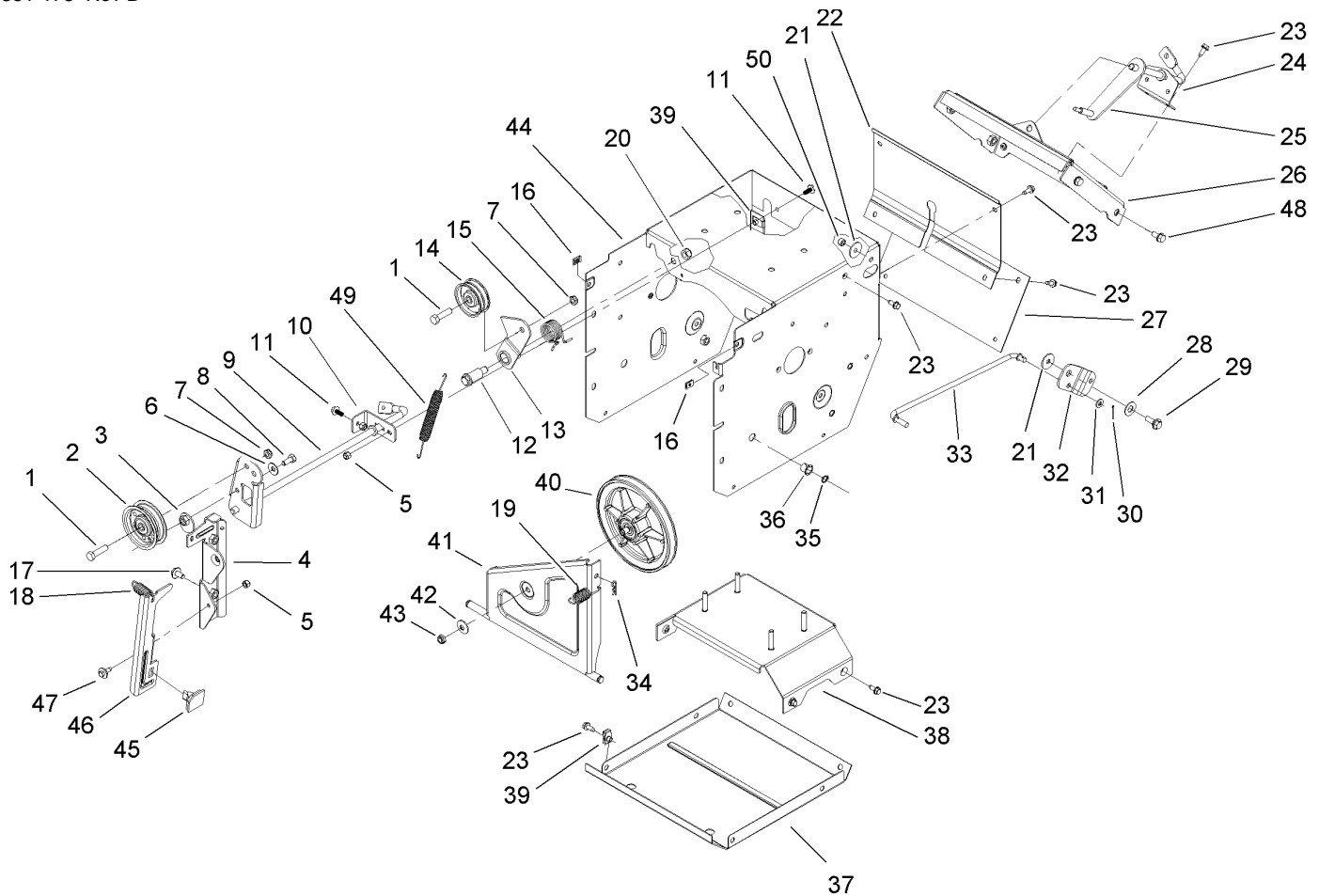
| Ref | Part No. | Qty. | Description |
|-----|----------|------|-------------------|
| 27 | 3296-29 | 2 | Nut-Lock, NI |
| 28 | 106-7260 | 1 | Washer-Curved |
| 29 | 3230-5 | 1 | Screw-CARR |
| 30 | 3230-23 | 1 | Screw-CARR |
| 31 | 46-8091 | 3 | Screw-HWH |
| 32 | 105-9991 | 1 | Ring-Chute |
| 33 | 106-4440 | 1 | Chute-Discharge |
| 34 | 46-6811 | 1 | Screw-HWH |
| 35 | 106-4475 | 1 | Spring-Torsion |
| 36 | 107-1019 | 1 | Seal-Chute |
| 37 | 3290-456 | 1 | Washer-Belleville |
| 38 | 32144-10 | 1 | Screw-HWH |



Chain Drive Assembly

| Ref | Part No. | Qty. | Description |
|------|-------------|------|-----------------------|
| 1 | | 1 | RH Wheel And Tire ASM |
| 1 | 107-3042 | 1 | Tire |
| 1 | 107-3043 | 1 | Rim-Tire |
| 2 | 108-2989 | 1 | Clutch Hexshaft ASM |
| 4 | 3296-42 | 8 | Nut-Lock, NI |
| 6 | 106-4480 | 1 | Wheel-Friction |
| 7 | 321-4 | 4 | Screw-HH |
| 11 | 108-2981 | 2 | Retainer-Bearing |
| 13 | 32144-10 | 4 | Screw-HWH |
| 14 | 106-4558 | 2 | Bearing-Axle |
| 15 | 3-8664 | 4 | Washer-Thrust |
| 16 | 107-8889 | 4 | Guide-Collar |
| 17 | 3256-22 | 5 | Washer-Flat |
| 18 | 107-8892-03 | 1 | Brace-Collar, Shift |
| 20 | 107-8893 | 2 | Spring-Extension |
| 21 | 108-0015 | 4 | Washer-Flat |
| 22 | 107-8894 | 2 | 11T Gear ASM |
| 22:2 | 108-2973 | 2 | Bushing-Flange |
| 23 | 108-0016 | 2 | Chain-Roller |
| 23 | 2710-6 | 2 | Link-Connecting |
| 24 | 107-8888 | 1 | Collar-Shift, RH |
| 25 | 321-23 | 2 | Screw-HH |
| 26 | 107-8883 | 1 | Shaft-Intermediate |
| 27 | 3290-343 | 2 | Pin-Hair |

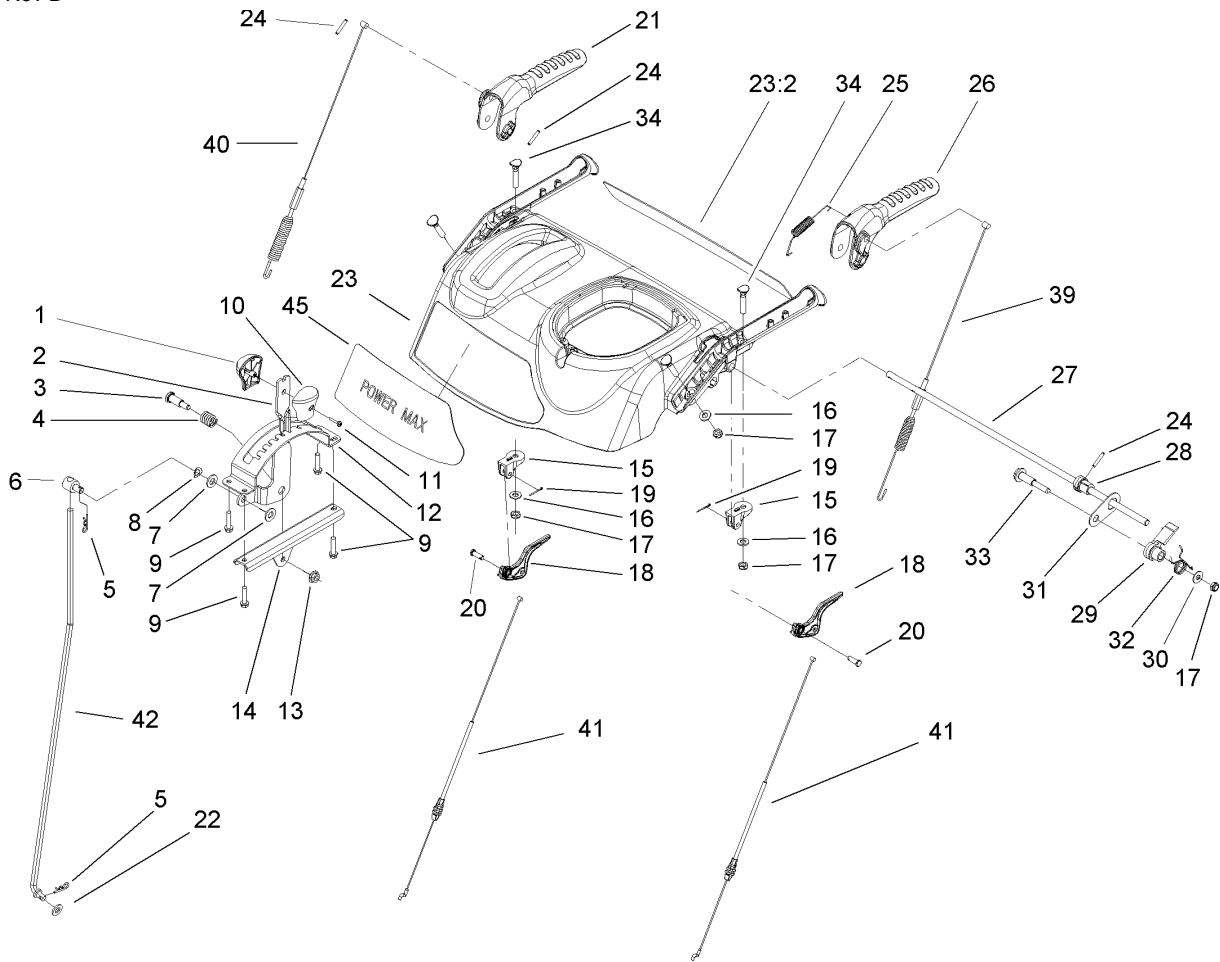
| Ref | Part No. | Qty. | Description |
|-----|----------|------|-----------------------|
| 28 | 107-8887 | 1 | Collar-Shift, LH |
| 29 | 108-2975 | 2 | Screw-HH |
| 30 | 107-8891 | 2 | Washer-Thrust |
| 31 | 3257-7 | 2 | Key-Woodruff |
| 32 | 107-8898 | 2 | Shaft-Axle |
| 33 | 106-4572 | 2 | Gear-Axle, 44 Tooth |
| 34 | 322-17 | 1 | Screw-HH |
| 35 | 3296-47 | 1 | Nut-Lock, NI |
| 36 | 106-7259 | 1 | Tube-Axle |
| 37 | | 1 | LH Wheel And Tire ASM |
| 37 | 107-3042 | 1 | Tire |
| 37 | 107-3043 | 1 | Rim-Tire |
| 40 | 32144-14 | 2 | Screw-HWHTF |
| 41 | 55-9370 | 2 | Spacer-Blade, Rotor |



Frame Assembly

| Ref | Part No. | Qty. | Description |
|-----|-------------|------|-------------------------|
| 1 | 323-8 | 2 | Screw-HH |
| 2 | 92-7104 | 1 | Pulley-Idler |
| 3 | 107-1047 | 1 | Nut |
| 4 | 107-1039 | 1 | Bracket-Idler, Impeller |
| 5 | 3296-42 | 3 | Nut-Lock, NI |
| 6 | 3290-456 | 1 | Washer-Belleville |
| 7 | 3296-59 | 2 | Nut-Lock, NI |
| 8 | 322-3 | 1 | Screw-HH |
| 9 | 107-3838-03 | 1 | Impeller Clutch ASM |
| 10 | 106-7341 | 1 | Bracket-Rear, Clutch |
| 11 | 99-6810 | 2 | Screw-HH |
| 12 | 107-1022 | 1 | Bolt-Shoulder |
| 13 | 108-0011 | 1 | Arm-Idler, Traction |
| 14 | 3-4244 | 1 | Pulley-Idler |
| 15 | 108-0010 | 1 | Spring-Torsion |
| 16 | 107-1013 | 2 | Nut-Speed, U-Type |
| 17 | 3234-7 | 2 | Screw-HHF |
| 18 | 107-1045 | 1 | Spring-Extension |
| 19 | 107-1003 | 1 | Spring-Extension |
| 20 | 3296-76 | 1 | Nut-Lock, NI |
| 21 | 5-4460 | 2 | Washer-Pivot |
| 22 | 108-0022-01 | 1 | Cover-Upper |
| 23 | 32144-10 | 17 | Screw-HWH |
| 24 | 108-0036 | 1 | Bracket-Rod, Shift |

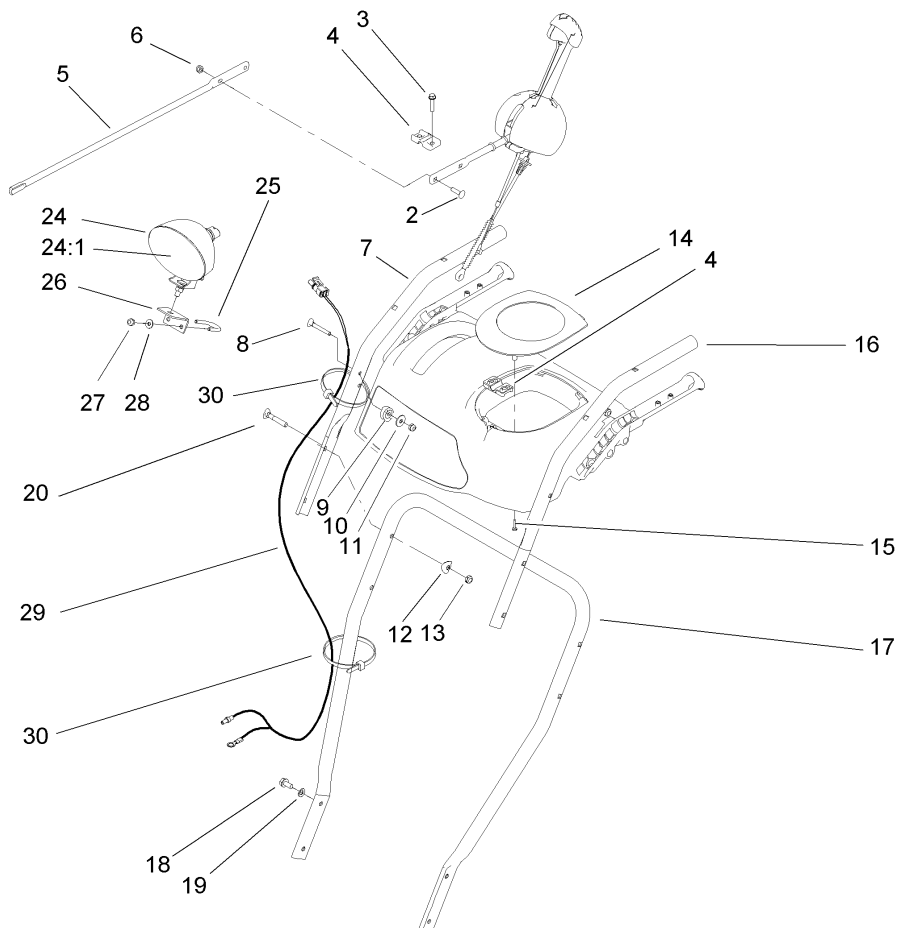
| Ref | Part No. | Qty. | Description |
|-----|-------------|------|-------------------------|
| 25 | 106-7268 | 1 | Lever-Control, Traction |
| 26 | 108-0026-01 | 1 | Shift Plate ASM |
| 27 | 106-7345-01 | 1 | Cover-Lower |
| 28 | 25-5640 | 1 | Washer |
| 29 | 27-0410 | 1 | Screw-Shoulder |
| 30 | 3272-4 | 1 | Pin-Cotter |
| 31 | 3256-23 | 1 | Washer-Flat |
| 32 | 107-1011 | 1 | Bellcrank-Drive |
| 33 | 106-4467 | 1 | Link-Control, Speed |
| 34 | 3290-307 | 1 | Pin-Hair |
| 35 | 32151-61 | 2 | Ring-Retaining |
| 36 | 256-257 | 2 | Bushing-Nyliner |
| 37 | 106-7330-01 | 1 | Pan-Bottom |
| 38 | 106-7315 | 1 | Brace Frame ASM |
| 39 | 107069 | 8 | Clip |
| 40 | 108-0031 | 1 | Traction Pulley ASM |
| 41 | 108-0032 | 1 | Pulley Pivot ASM |
| 42 | 3290-340 | 1 | Washer-Belleville |
| 43 | 3296-5 | 1 | Nut-Lock |
| 44 | 108-0019-01 | 1 | Traction Frame ASM |
| 45 | 66-8060 | 1 | Pad-Brake |
| 46 | 107-1000 | 1 | Arm-Brake |
| 47 | 92-9698 | 1 | Screw-Shoulder |
| 48 | 32144-14 | 4 | Screw-HWHTF |



Handle and Control Assembly

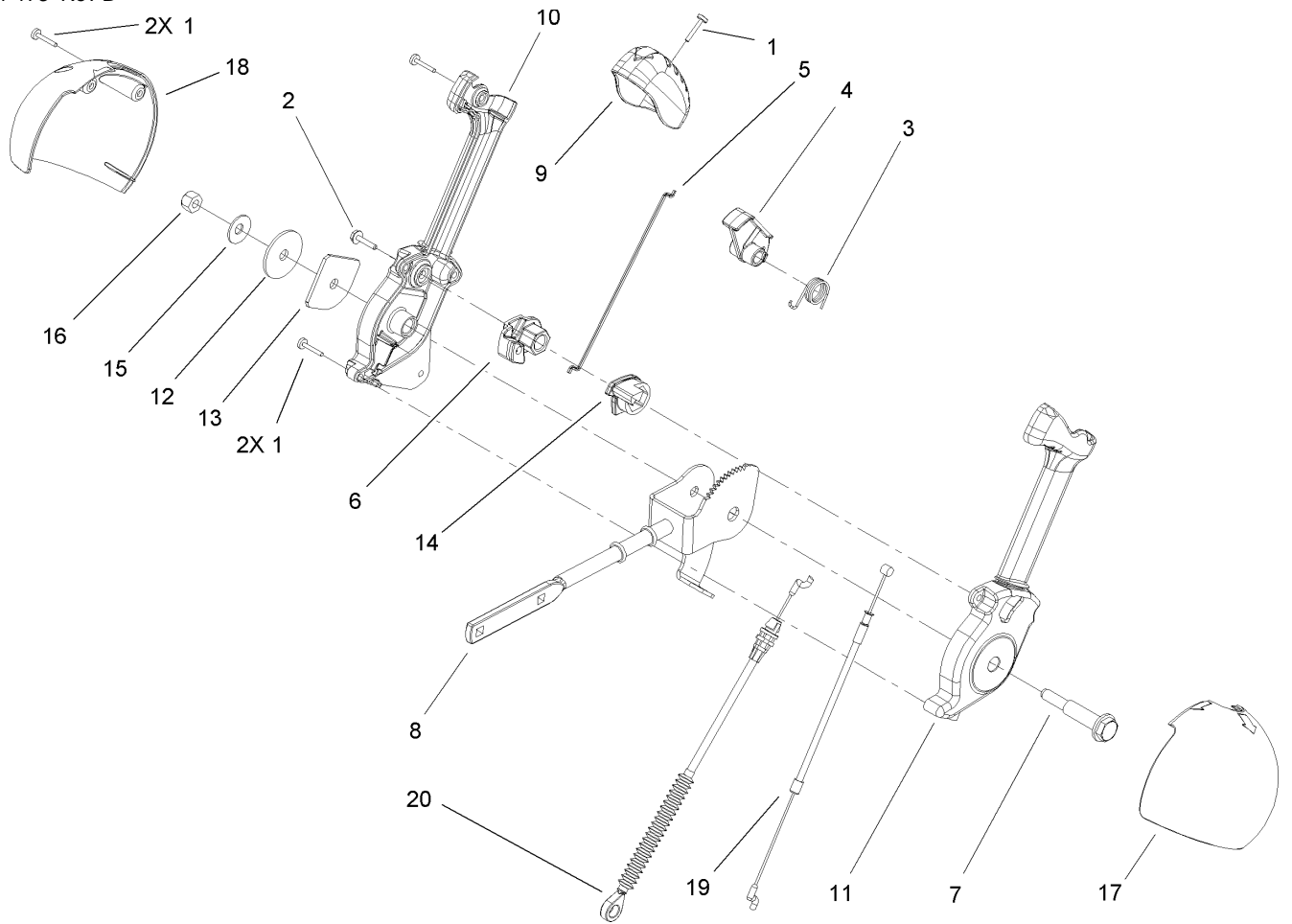
| Ref | Part No. | Qty. | Description |
|------|-------------|------|-----------------------|
| 1 | 106-4423 | 1 | Knob-Shift, RH |
| 2 | 106-7278-03 | 1 | Selector-Speed |
| 3 | 63-2650 | 1 | Screw-Shoulder |
| 4 | 107-3017 | 1 | Spring-Compression |
| 5 | 3290-307 | 2 | Pin-Hair |
| 6 | 101161 | 1 | Trunnion |
| 7 | 3256-24 | 2 | Washer-Flat |
| 8 | 612586 | 1 | Washer-Spring |
| 9 | 46-8092 | 4 | Screw-Plastite |
| 10 | 105-9999 | 1 | Knob-Shift, LH |
| 11 | 94-4496 | 1 | Screw-PPH |
| 12 | 106-7277-03 | 1 | Guide-Selector, Speed |
| 13 | 32128-13 | 1 | Nut-HF |
| 14 | 106-7279-03 | 1 | Mount-Selector, Speed |
| 15 | 105-9980 | 2 | Mount-Clutch, Lever |
| 16 | 3256-70 | 4 | Washer-Flat |
| 17 | 3296-72 | 5 | Nut-Lock, NI |
| 18 | 106-4505 | 2 | Lever-Clutch |
| 19 | 3272-4 | 2 | Pin-Cotter |
| 20 | 1-808265 | 2 | Pin-Clevis |
| 21 | 106-4413 | 1 | Lever-Auger |
| 22 | 3256-38 | 1 | Washer-Flat |
| 23 | 108-2970 | 1 | Control Panel ASM |
| 23:2 | 108-2968 | 1 | Decal |

| Ref | Part No. | Qty. | Description |
|-----|-----------|------|----------------------|
| 24 | 32121-125 | 3 | Pin-Spring |
| 25 | 107-3001 | 1 | Spring-Tension |
| 26 | 106-4410 | 1 | Lever-Traction |
| 27 | 105-9996 | 1 | Rod-Lockout |
| 28 | 107-1043 | 1 | Cam-Lockout |
| 29 | 108-0023 | 1 | Latch-Lockout |
| 30 | 98-3499 | 1 | Washer-Flat |
| 31 | 107-3000 | 1 | Link-Lockout |
| 32 | 108-0024 | 1 | Spring-Torsion |
| 33 | 106-4412 | 1 | Screw-Shoulder |
| 34 | 107-3018 | 4 | Screw-Handle |
| 39 | 106-4563 | 1 | Cable-Traction |
| 40 | 106-4599 | 1 | Cable-Auger |
| 41 | 107-8896 | 2 | Cable-Clutch |
| 42 | 107-1005 | 1 | Rod-Shift |
| 45 | 108-2966 | 1 | Decal-Panel, Control |



Handle, Headlamp and Control Assembly

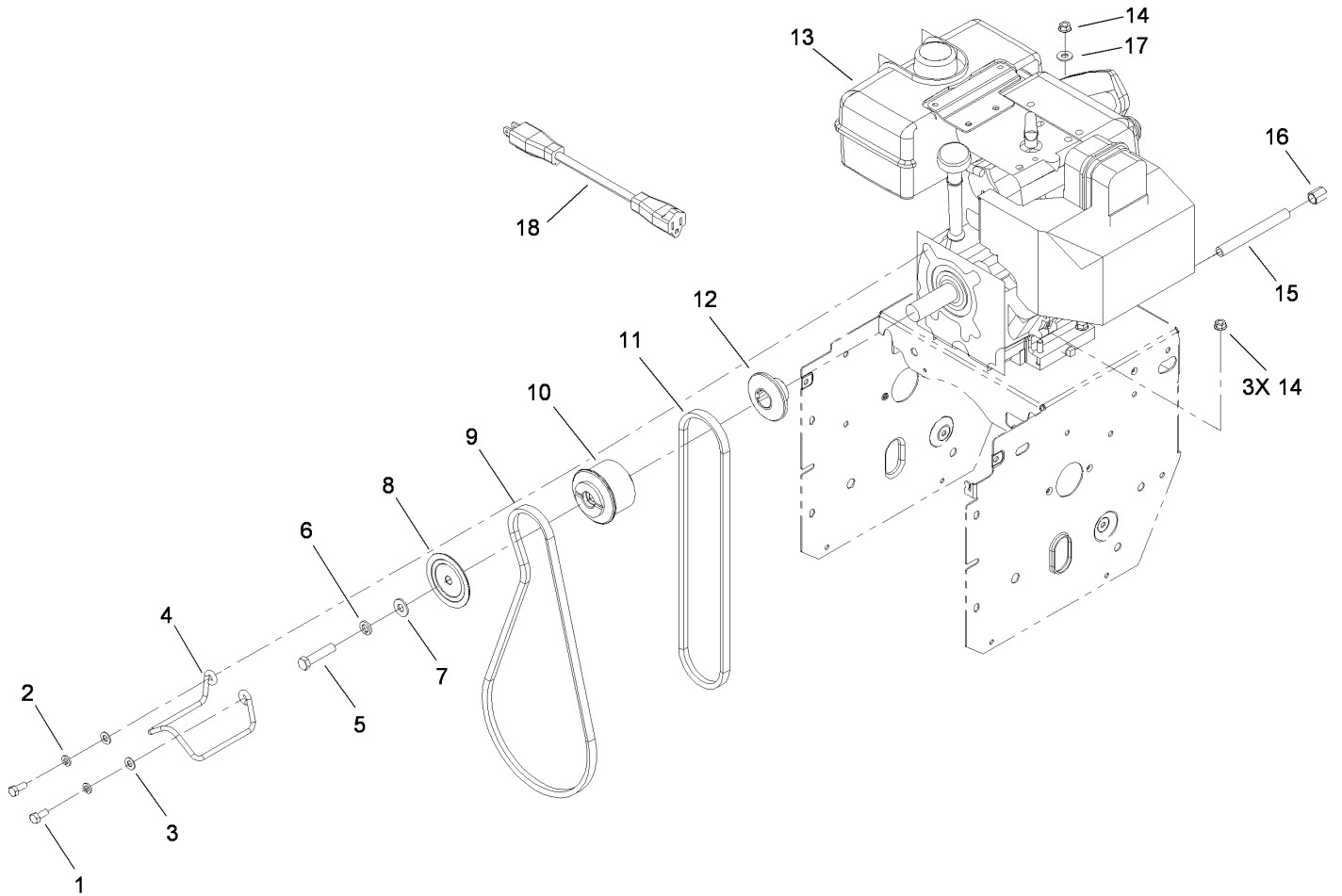
| Ref | Part No. | Qty. | Description | Ref | Part No. | Qty. | Description |
|------|-------------|------|----------------------|-----|----------|------|--------------|
| 2 | 3229-30 | 2 | Screw-CARR | 28 | 3256-1 | 2 | Washer-Flat |
| 3 | 46-8092 | 2 | Screw-Plastite | 29 | 106-4511 | 1 | Harness-Wire |
| 4 | 105-9987 | 2 | Support-Rod | 30 | 614249 | 2 | Strap-Tie |
| 5 | 106-7283 | 1 | Rod-Chute, Front | | | | |
| 6 | 3296-73 | 2 | Nut-Lock, NI | | | | |
| 7 | 108-0038-03 | 1 | Handle-Upper, RH | | | | |
| 8 | 95-4453 | 2 | Screw | | | | |
| 9 | 106-4509 | 2 | Clamp-Cable | | | | |
| 10 | 87-6630 | 2 | Washer-Plain | | | | |
| 11 | 3296-73 | 2 | Nut-Lock, NI | | | | |
| 12 | 107-3844 | 4 | Washer | | | | |
| 13 | 3296-72 | 4 | Nut-Lock, NI | | | | |
| 14 | 106-4586 | 1 | Cover-Panel, Control | | | | |
| 15 | 94-4496 | 2 | Screw-PPH | | | | |
| 16 | 108-0037-03 | 1 | Handle-Upper, LH | | | | |
| 17 | 105-9981-03 | 1 | Handle-Lower | | | | |
| 18 | 32144-14 | 4 | Screw-HWHTF | | | | |
| 19 | 3290-475 | 4 | Washer-Belleville | | | | |
| 20 | 92-2260 | 4 | Screw-Handle | | | | |
| 24 | 106-4510 | 1 | Headlamp ASM | | | | |
| 24:1 | 108-0008 | 1 | Lamp-12 Volt | | | | |
| 25 | 107-3024 | 1 | Clamp | | | | |
| 26 | 107-1020-03 | 1 | Bracket-Light | | | | |
| 27 | 3296-73 | 2 | Nut-Lock, NI | | | | |



Chute Control Assembly

| Ref | Part No. | Qty. | Description |
|-----|----------|------|--------------------------|
| 1 | 94-4496 | 5 | Screw-PPH |
| 2 | 98-1375 | 1 | Screw-HWH |
| 3 | 105-9982 | 1 | Spring-Torsion |
| 4 | 105-9984 | 1 | Trigger-Latch |
| 5 | 105-9985 | 1 | Link-Latch |
| 6 | 105-9988 | 1 | Lever-Cable, Deflector |
| 7 | 105-9995 | 1 | Screw-Shoulder |
| 8 | 106-4479 | 1 | Rod-Control, Chute |
| 9 | 106-7280 | 1 | Cap-Lever |
| 10 | 106-7281 | 1 | Lever-Chute Control, RH |
| 11 | 106-7282 | 1 | Lever-Chute Control, LH |
| 12 | 107-3002 | 1 | Washer-Nylon |
| 13 | 106-7295 | 1 | Plate-Friction |
| 14 | 106-7310 | 1 | Pawl-Latch |
| 15 | 3290-456 | 1 | Washer-Belleville |
| 16 | 3296-29 | 1 | Nut-Lock, NI |
| 17 | 105-9986 | 1 | Cover-Chute Lever, LH |
| 18 | 106-7292 | 1 | Cover-Chute Lever, RH |
| 19 | 105-9989 | 1 | Cable-Release, Chute |
| 20 | 105-9990 | 1 | Cable-Control, Deflector |

| | | | |
|--|--|--|--|
| | | | |
| | | | |
| | | | |
| | | | |



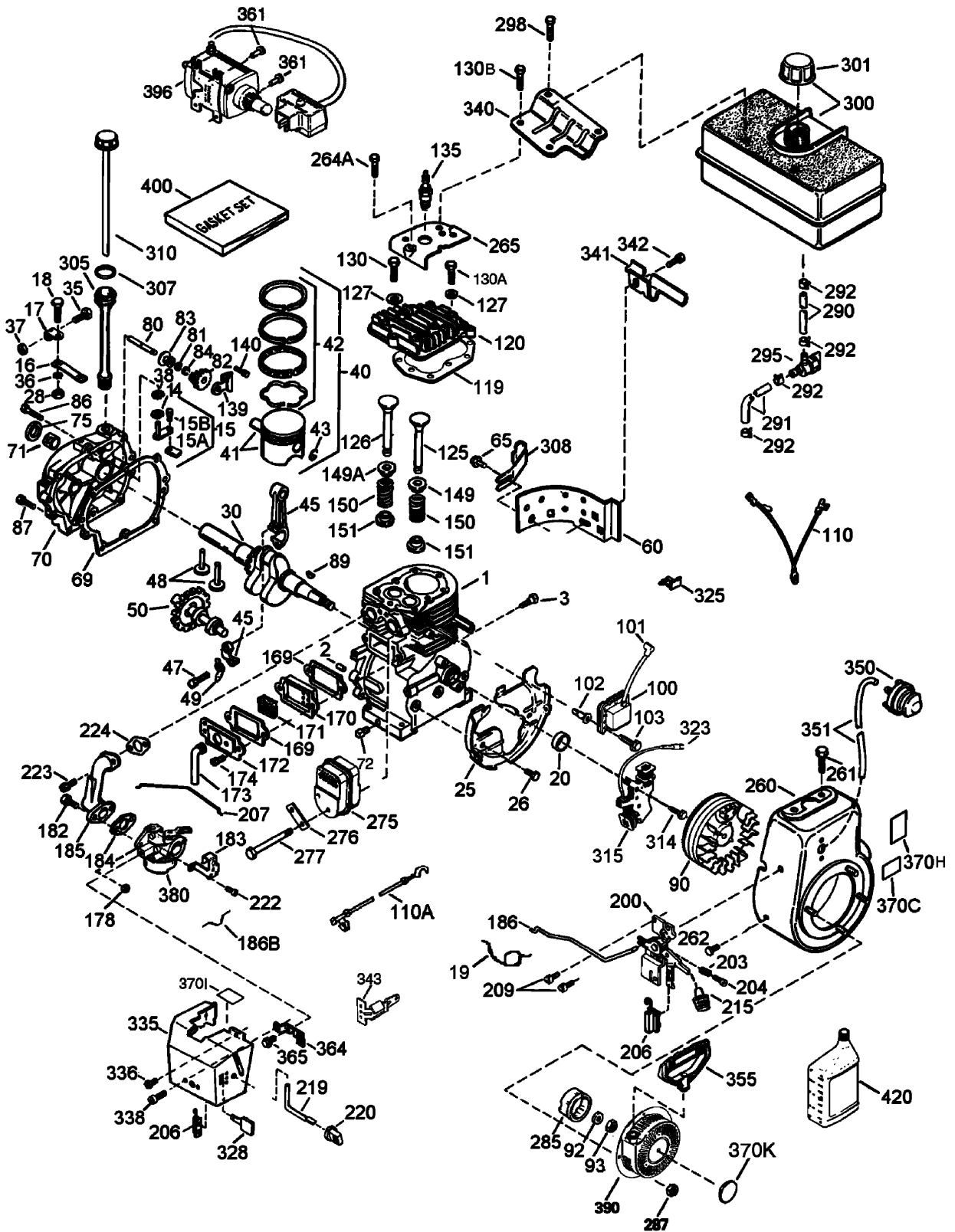
Engine Assembly

| Ref | Part No. | Qty. | Description |
|-----|----------|------|-------------------------------------|
| 1 | 3210-3 | 2 | Screw-HH |
| 2 | 3253-4 | 2 | Washer-Lock |
| 3 | 3256-23 | 2 | Washer-Flat |
| 4 | 107-3835 | 1 | Guide-Belt |
| 5 | 3212-8 | 1 | Screw-HH |
| 6 | 3253-6 | 1 | Washer-Lock |
| 7 | 3256-4 | 1 | Washer-Flat |
| 8 | 62-0940 | 1 | Sheave-Half, Impeller |
| 9 | 106-4498 | 1 | Belt-V |
| 10 | 106-7333 | 1 | Pulley-Engine, Center |
| 11 | 94-8812 | 1 | V Belt-Traction |
| 12 | 106-7334 | 1 | Sheave-Half, Traction |
| 13 | | 1 | Engine-Tecumseh, Hmsk-80 155672X |
| 14 | 32128-20 | 4 | Nut-HF |
| 15 | 289-34 | 1 | Nipple-Pipe |
| 16 | 288-2 | 1 | Cap-Pipe |
| 17 | 3256-2 | 1 | Washer-Flat |
| 18 | 99-9300 | 1 | Cord-Extension |

| | | | |
|--|--|--|--|
| | | | |
| | | | |
| | | | |
| | | | |

Engine Assembly No. 1

Tecumseh HMSK-80 155672X



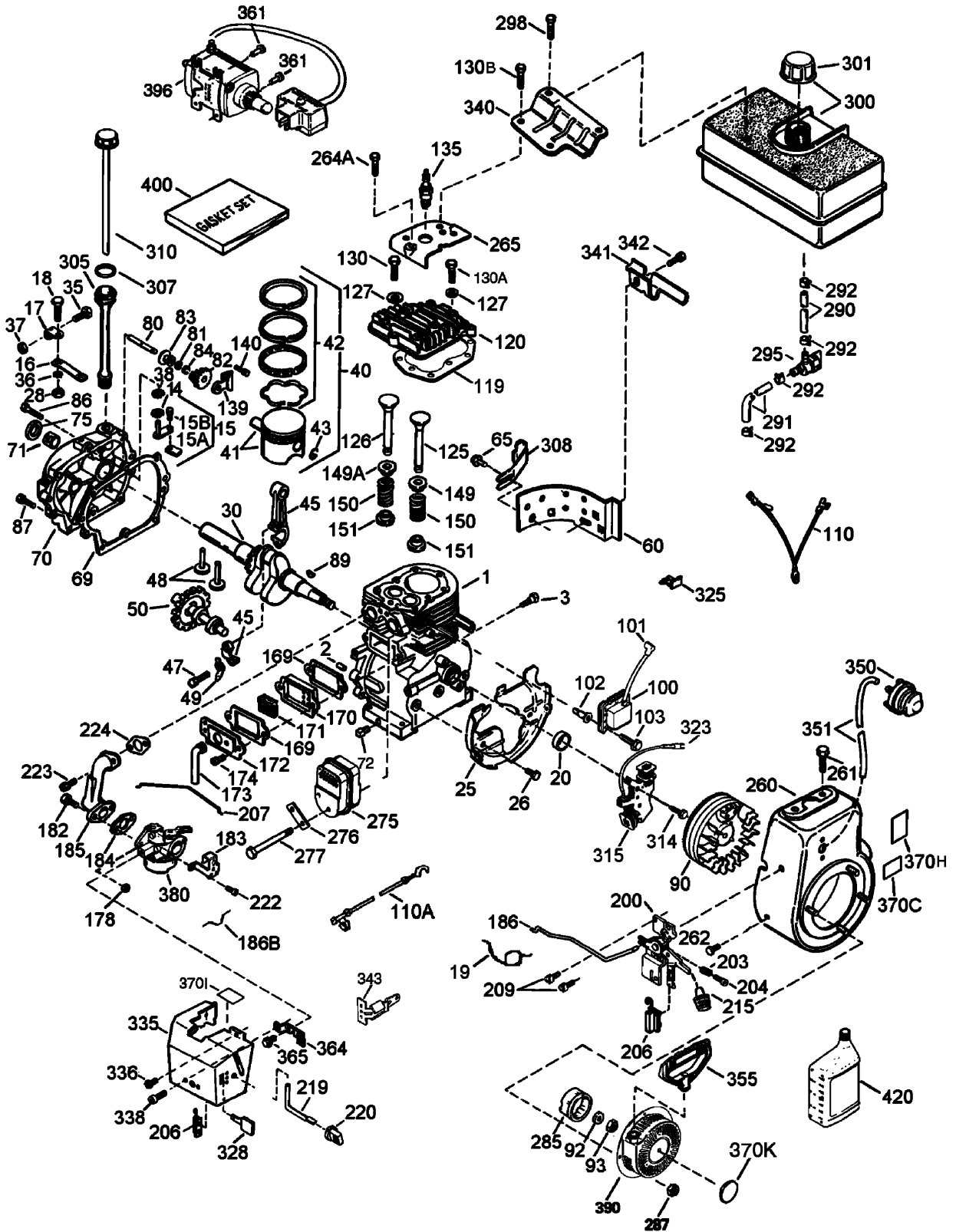
Engine Assembly No. 1

Tecumseh HMSK-80 155672X

| Ref | Part No. | Qty. | Description | Ref | Part No. | Qty. | Description |
|------|----------|------|---|-------|----------|------|--|
| ①1 | 35385 | 1 | Cylinder ASM (Includes 2, 20, 72) | ①90 | 611093 | 1 | Flywheel ASM |
| ①2 | 27652 | 2 | Pin-Dowel | ①92 | 650880 | 1 | Washer-Belleville |
| ①3 | 650820 | 2 | Screw (1/4-20X1/2) | ①93 | 650881 | 1 | Nut-Flywheel |
| ①14 | 28277 | 1 | Washer-Flat | ①100 | 35135A | 1 | Solid State Ignition (Includes 101) |
| ①15 | 30699C | 1 | Governor Rod ASM Includes 15A, 15B) | ①101 | 610118 | 1 | Cover-Spark Plug |
| ①15A | 30700 | 1 | Yoke-Governor | ①102 | 651024 | 2 | Stud-Mounting, Solid State |
| ①15B | 650494 | 1 | Screw (6-40X5/16) | ①103 | 651007 | 2 | Screw (T-15, 10-24 X 15/16) |
| ①16 | 33454A | 1 | Lever-Governor | ①110 | 35187 | 1 | Wire-Ground |
| ①17 | 29916 | 1 | Clamp-Lever, Governor | ①110A | 37047 | 1 | Wire-Ground |
| ①18 | 651028 | 1 | Screw (T-15, 8-32X7/16) | ①119 | 36448 | 1 | Gasket-Head, Cylinder |
| ①19 | 34663 | 1 | Spring-Throttle | ①120 | 36449 | 1 | Head-Cylinder |
| ①20 | 35319 | 1 | Seal-Oil | ①125 | 27878A | 1 | Exhaust Valve (STD) (Includes 151) |
| ①25 | 36460 | 1 | Baffle-Housing, Blower | ①125 | 27880A | 0 | Exhaust Valve (1/32 O S) (Includes 151) |
| ①26 | 650561 | 2 | Screw (1/4-20X19/32) | ①126 | 34035 | 1 | Intake Valve (STD) (Includes 151) |
| ①28 | 30322 | 1 | Nut-Lock (8-32) | ①127 | 650691 | 2 | Washer-Flat |
| ①30 | 35571A | 1 | Crankshaft | ①130 | 6021A | 7 | Screw (5/16-18X1-1/2) |
| ①35 | 29826 | 1 | Screw (10-32X3/4) | ①130A | 650727 | 2 | Screw (5/16-18X1-25/32) |
| ①36 | 29918 | 1 | Washer-Lock (8) | ①130B | 651055 | 2 | Screw (5/16-18X39/64) |
| ①37 | 29216 | 1 | Nut-Lock (10-32) | ①135 | 35395 | 1 | Spark Plug-Resistor (R J19 L M) |
| ①38 | 29642 | 1 | Ring-Retaining | ①139 | 33369 | 1 | Bracket-Gear, Governor |
| ①40 | 40011 | 1 | Piston-Pin And Ring Set (STD) | ①140 | 650836 | 2 | Screw (10-24X1/2) |
| ①40 | 40012 | 1 | Piston- Pin And Ring Set (.010 O S) | ①149 | 27882 | 1 | Cap-Spring, Valve |
| ①41 | 40009 | 1 | Piston And Pin ASM (STD) (Includes 43) | ①149A | 35862 | 1 | Cap-Spring, Valve |
| ①41 | 40010 | 1 | Piston And Pin ASM (.010 O S) (Includes 43) | ①150 | 27881 | 2 | Spring-Valve |
| ①42 | 40013 | 1 | Ring Set (STD) | ①151 | 32581 | 2 | Keeper-Spring, Valve |
| ①42 | 40014 | 1 | Ring Set (.010 O S) | ①169 | 27896A | 2 | Gasket-Cover, Valve |
| ①43 | 27888 | 2 | Ring-Retaining, Piston Pin | ①170 | 28423 | 1 | Body-Breather |
| ①45 | 36897 | 1 | Connecting Rod ASM (Includes 47, 49) | ①171 | 28424 | 1 | Element-Breather |
| ①47 | 651033 | 2 | Bolt-Rod, Connecting | ①172 | 28425 | 1 | Cover-Valve |
| ①48 | 34034 | 2 | Lifter-Valve | ①173 | 35350 | 1 | Tube-Breather |
| ①49 | 36896 | 1 | Dipper-Oil | ①174 | 650128 | 2 | Screw (10-24X1/2) |
| ①50 | 35375 | 1 | Camshaft (Mcr) | ①178 | 29752 | 2 | Nut And Lock Washer (1/4-28) |
| ①60 | 33273A | 1 | Extension-Housing, Blower | ①182 | 30088A | 2 | Screw (1/4-28X1) |
| ①65 | 650128 | 1 | Screw (10-24X1/2) | ①183 | 34587A | 1 | Bracket-Choke |
| ①69 | 37342 | 1 | Gasket-Cover, Cylinder | ①184 | 33263 | 1 | Gasket-Carburetor To Intake Pipe |
| ①70 | 35376A | 1 | Cylinder Cover ASM (Includes 71, 75, 80-84) | ①185 | 33877 | 1 | Pipe-Intake |
| ①71 | 35377 | 1 | Bushing-Crankshaft | ①186 | 34667 | 1 | Link-Governor |
| ①72 | 27642 | 1 | Plug-Drain, Oil (SQH 1/4-18) | ①186B | 36652 | 1 | Spring-Choke |
| ①75 | 35319 | 1 | Seal-Oil | ①200 | 34677 | 1 | Control Bracket (Includes 19, 203, 204, 206) |
| ①80 | 37587 | 1 | Shaft-Governor | ①203 | 31342 | 1 | Spring-Compression |
| ①81 | 651080 | 1 | Washer | ①204 | 651029 | 1 | Screw (T-10, 5-40X7/16) |
| ①82 | 37588 | 1 | Governor Gear ASM (Includes 81) | ①206 | 610973 | 1 | Terminal |
| ①83 | 30588A | 1 | Spool-Governor | | | | |
| ①84 | 29193 | 1 | Ring-Retaining | | | | |
| ①86 | 650833 | 7 | Screw (1/4-20X1-3/16) | | | | |
| ①87 | 650832 | 1 | Screw (1/4-20X1-11/16) | | | | |
| ①89 | 32589 | 1 | Key-Flywheel | | | | |

Engine Assembly No. 2

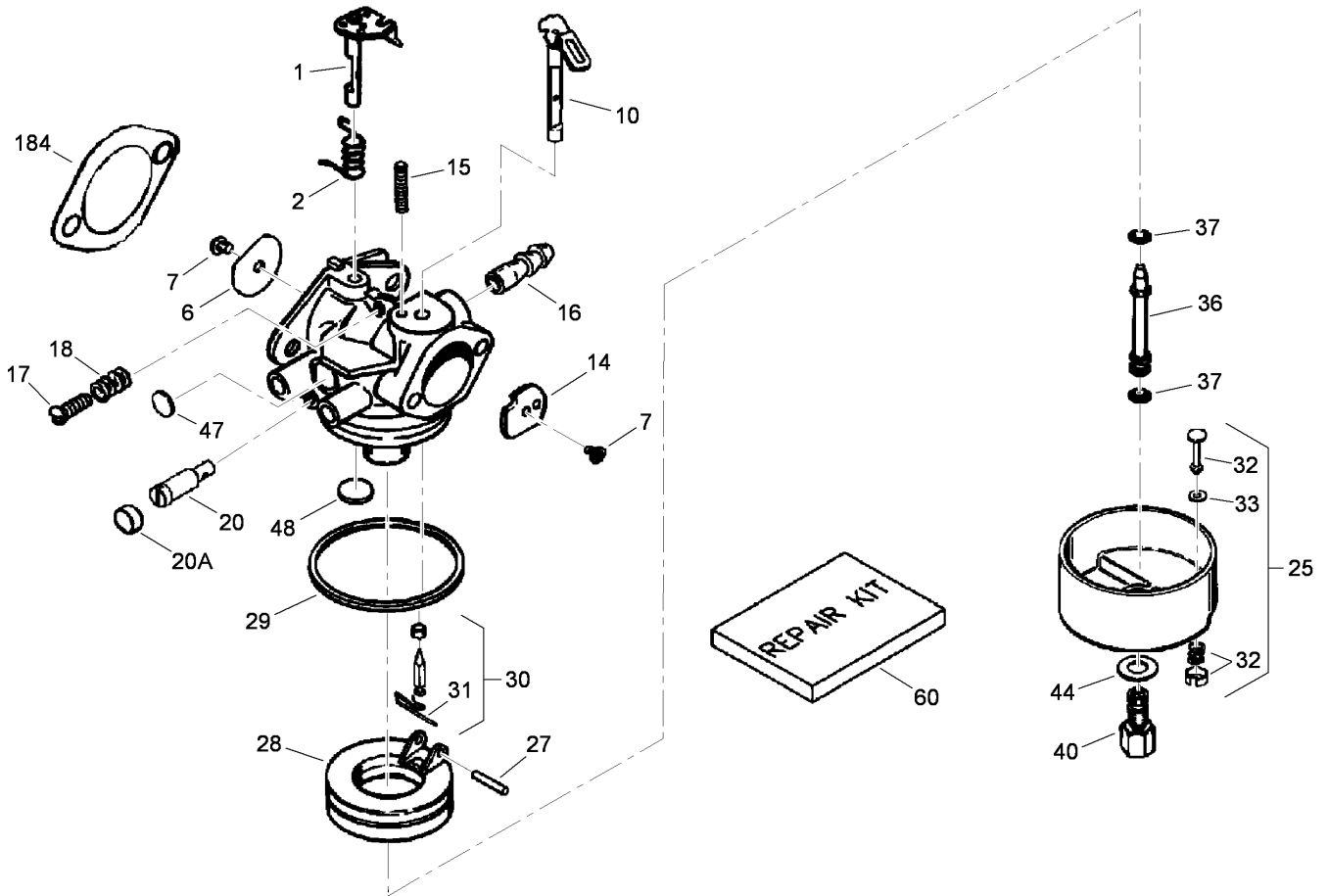
Tecumseh HMSK-80 155672X



Engine Assembly No. 2

Tecumseh HMSK-80 155672X

| Ref | Part No. | Qty. | Description | Ref | Part No. | Qty. | Description |
|-------|----------|------|--|-------|----------|------|---|
| ③207 | 33878 | 1 | Link-Throttle | ③370H | 35077 | 1 | Decal-Speed Control And Choke |
| ③209 | 650821 | 2 | Screw (10-32 X 1/2) | ③370I | 37119 | 1 | Decal-Warning (Bilingual) |
| ③215 | 35440 | 1 | Knob-Control | ③370K | 36695 | 1 | Decal-Tecumseh Logo For Top Of Recoil Starter |
| ③219 | 34586 | 1 | Rod-Choke | ③380 | 640052 | 1 | Carburetor ASM (Includes 184) |
| ③220 | 35438 | 1 | Knob-Control | ③390 | 590749 | 1 | Starter-Rewind |
| ③222 | 28820 | 2 | Screw (10-32 X 1/2) | ③396 | 33329E | 1 | Starter-Electric (110 Volt) |
| ③223 | 650378 | 2 | Screw (T-30, 5/16-18X1-3/32) | ③400 | 36450C | 1 | Gasket Set |
| ③4224 | 27915A | 1 | Gasket-Pipe, Intake | ③420 | 730226A | 1 | Oil-Engine, S A E 5W30 |
| ③260 | 35447A | 1 | Housing-Blower | ①③ | 911302A | 1 | Replacement Engine |
| ③261 | 650788 | 2 | Screw (5/16-18X3/4) | ①③ | 756320C | 1 | Shortblock |
| ③262 | 29747B | 2 | Screw | | | | |
| ③264A | 650802 | 1 | Screw (1/2-20X5/8) | | | | |
| ③265 | 33272D | 1 | Cover-Head, Cylinder (Black) | | | | |
| ③275 | 35056 | 1 | Muffler | | | | |
| ③276 | 31588 | 1 | Plate-Locking | | | | |
| ③277 | 651002 | 2 | Screw (5/16-18X4-3/16) | | | | |
| ③285 | 35985B | 1 | Cup-Starter | | | | |
| ③287 | 29752 | 4 | Nut And Lock Washer (1/4-28) | | | | |
| ③290 | 29774 | 1 | Line-Fuel (8.62) | | | | |
| ③291 | 30962 | 1 | Line-Fuel | | | | |
| ③292 | 26460 | 4 | Clamp-Line, Fuel | | | | |
| ③295 | 35857 | 1 | Fuel Shut-Off Valve ASM (Includes 292) | | | | |
| ③298 | 650665 | 2 | Screw (1/4-15X7/8) | | | | |
| ③300 | 34156A | 1 | Fuel Tank ASM (Includes 292, 301) | | | | |
| ③301 | 36246 | 1 | Cap-Fuel | | | | |
| ③305 | 35554 | 1 | Tube-Fill, Oil | | | | |
| ③307 | 35499 | 1 | O-Ring | | | | |
| ③308 | 35540 | 1 | Clip-Tube, Fill | | | | |
| ③310 | 36205 | 1 | Gauge Oil ASM | | | | |
| ③314 | 650873 | 1 | Screw (1/4-20 X 3/4) | | | | |
| ③315 | 611111 | 1 | Alternator Coil ASM (18 Watt) (Includes 322) | | | | |
| ③323 | 611118 | 1 | Terminal | | | | |
| ③325 | 29443 | 1 | Clip-Wire | | | | |
| ③328 | 35062 | 2 | Key-Ignition | | | | |
| ③335 | 36547 | 1 | Cover-Carburetor (Black) | | | | |
| ③336 | 650765 | 1 | Screw (10-32X1/2) | | | | |
| ③338 | 28942 | 2 | Screw (10-32 X 3/8) | | | | |
| ③340 | 34154 | 1 | Bracket-Tank, Fuel (Black) | | | | |
| ③341 | 34155 | 1 | Bracket-Tank, Fuel | | | | |
| ③342 | 650561 | 1 | Screw (1/4-20X19/32) | | | | |
| ③343 | 35079A | 1 | Key Switch Bracket ASM (Includes 343A) | | | | |
| ③350 | 570682A | 1 | Primer ASM | | | | |
| ③351 | 32180C | 1 | Line-Primer | | | | |
| ③355 | 590574 | 1 | Handle-Starter, Mitten Grip | | | | |
| ③361 | 650990 | 2 | Screw (T-30, 1/4-20X15/32) | | | | |
| ③364 | 33377 | 1 | Bracket-Carburetor | | | | |
| ③365 | 650767 | 2 | Screw (8-32X27/64) | | | | |
| ③370C | 36501 | 1 | Decal-Primer, International Symbol | | | | |



Carburetor Assembly No. 640052 Tecumseh HMSK-80 155672X

| Ref | Part No. | Qty. | Description |
|-----|----------|------|---|
| ❶ | 631776A | 1 | Throttle Shaft And Lever ASM |
| ❷ | 631970 | 1 | Spring-Return, Throttle |
| ❸ | 631778 | 1 | Shutter-Throttle |
| ❹ | 650506 | 2 | Screw-Shutter |
| ❺ | 632112 | 1 | Choke Shaft And Lever ASM |
| ❻ | 632174 | 1 | Shutter-Choke |
| ❼ | 630735 | 1 | Spring-Positioning, Choke |
| ❽ | 632164 | 1 | Fitting-Fuel |
| ❾ | 650417 | 1 | Screw-Throttle Crack Screw / Idle Speed |
| ❿ | 630766 | 1 | Spring-Tension |
| ⓫ | 640016 | 1 | Screw-Restrictor, Idle |
| ⓬ | 640053 | 1 | Cap-Screw, Idle Restrictor |
| ⓭ | 631951 | 1 | Float Bowl ASM (Includes 32, 33) |
| ⓮ | 631024 | 1 | Shaft-Float |
| ⓯ | 632019 | 1 | Float |
| ⓰ | 631028 | 1 | O Ring-Bowl, Float |
| ⓱ | 631021 | 1 | Inlet Needle, Seat And Clip (Includes 31) |
| ⓲ | 631022 | 1 | Clip-Spring |
| ⓳ | 27136A | 1 | Bowl Drain ASM |
| ⓴ | 27554 | 1 | Gasket-Plunger, Drain |
| ⓵ | 640005 | 1 | Tube-Nozzle, Main |
| ⓶ | 632547 | 2 | O-Ring |

| Ref | Part No. | Qty. | Description |
|-----|----------|------|----------------------------------|
| ⓷ | 640055 | 1 | Nut-High Speed, Bowl |
| ⓸ | 27110 | 1 | Washer-Bowl Nut |
| ⓹ | 630748 | 1 | Plug-Welch, Idle Mixture Well |
| ⓺ | 631027 | 1 | Plug-Welch, Atmospheric Vent |
| ⓻ | 632760 | 1 | Repair Kit |
| ⓼ | 33263 | 1 | Gasket-Carburetor To Intake Pipe |

Attachments and Accessories

For 38630 - Power Max 828LXE Snowthrower

| Product Name | Model/Part |
|-----------------------------|------------|
| Tire Chain Kit | 107-3813 |
| Snow Cab | 107-3814 |
| Weight Kit | 107-3815 |
| 28 Inch Drift Breaker | 107-3817 |

NOTES

