



# **HydroTote<sup>®</sup> Trailer**

## **Hydroject<sup>®</sup> Aerator**

**Model No. 09833—Serial No. 260000001 and Up**

### **Operator's Manual**



# Contents

	Page
Introduction .....	2
Safety .....	2
Before Operating .....	2
While Operating .....	2
Safety and Instruction Decals .....	3
Setup .....	4
Loose Parts Chart .....	4
Operation .....	6
Attach the Trailer to the Tow Vehicle .....	6
Loading the HydroJect onto the Trailer .....	6
Towing the HydroJect Trailer .....	6
Maintenance .....	7
Lubrication .....	7
Inspect Retaining Strap .....	7
The Toro General Commercial Products Warranty ...	8

## Introduction

Read this manual carefully to learn how to operate and maintain your product properly. The information in this manual can help you and others avoid injury and product damage. Although Toro designs and produces safe products, you are responsible for operating the product properly and safely.

Whenever you need service, genuine Toro parts, or additional information, contact an Authorized Service Dealer or Toro Customer Service and have the model and serial numbers of your product ready.

Write the product model and serial numbers in the space below:

Model No. \_\_\_\_\_

Serial No. \_\_\_\_\_

This manual identifies potential hazards and has special safety messages that help you and others avoid personal injury and even death. **Danger**, **Warning**, and **Caution** are signal words used to identify the level of hazard. However, regardless of the hazard, be extremely careful.

**Danger** signals an extreme hazard that *will* cause serious injury or death if you do not follow the recommended precautions.

**Warning** signals a hazard that *may* cause serious injury or death if you do not follow the recommended precautions.

**Caution** signals a hazard that may cause minor or moderate injury if you do not follow the recommended precautions.

This manual uses two other words to highlight information. **Important** calls attention to special mechanical information and **Note**: emphasizes general information worthy of special attention.

## Safety

### Before Operating

- Read, understand, and follow all instructions in this operator’s manual before operating the trailer.
- Never allow children to operate the trailer. Do not allow adults to operate the trailer without proper instruction. Only trained operators who have read this manual should operate the trailer.
- Keep all shields and safety devices in place. If a shield, safety device or decal is illegible or damaged, repair or replace it before operation is commenced. Also tighten any loose nuts, bolts, and screws to ensure the trailer is in safe operating condition.
- Be sure the trailer is in safe operating condition by keeping nuts, bolts and screws tight.
- Perform only those maintenance instructions described in this manual. If major repairs are ever needed or assistance is desired, contact an Authorized Toro Distributor.

### While Operating

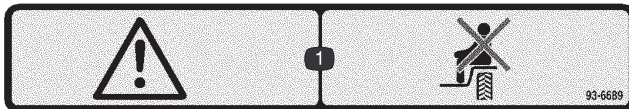
- The HydroTote Trailer is only intended for use with the Hydroject Aerator. The towing of other products may result in damage to axles and transmissions that continue to rotate when towed.
- **USE ONLY A VEHICLE WITH THE PROPER TOW RATING.** The HydroTote Trailer, Hydroject and hose weigh approximately 1,350 lbs. Ensure that the tow vehicle has adequate braking and handling capacity by checking the recommendations of the vehicle manufacturer.
- Ensure that the trailer is properly connected to the tow vehicle before loading or unloading the Hydroject to prevent sudden unintended tongue movement or flip up.
- The HydroTote Trailer adds extra towing weight to the vehicle. Drive the vehicle safely.
  - Do not drive on highway or public roads.
  - Always SLOW the tow vehicle when approaching and while making a turn.
  - Always SLOW the tow vehicle when driving in unfamiliar areas or over rough terrain.
  - Always SLOW the tow vehicle when changing direction of travel or preparing to stop.

- When turning or driving on slopes, always SLOW the tow vehicle, then turn to prevent loss of control and possible upset.
- DO NOT make sudden or sharp turns. DO NOT suddenly change direction of travel on an incline, ramp, grade, slope or similar surface.
- Always adjust the tow vehicle speed to allow for existing ground conditions such as wet slick surfaces, loose sand or gravel and/or low visibility conditions such as dim or bright lighting, fog, mist or rain.
- Be especially careful when driving a heavily loaded vehicle down an incline or slope. Drive the vehicle UP and DOWN the face of the slopes, inclines or grades whenever possible. DO NOT DRIVE across the face if at all possible. There is a risk of upsetting the vehicle, which can result in serious injury or death.
- Before backing up, look to the rear and assure no one is behind. Back up slowly and watch the trailer movement closely.
- Use extreme caution and slow speed when backing up the trailer and tow vehicle. The steering characteristics are much different than a single axle trailer.
- Watch out for traffic when near or crossing roads. Always yield the right of way to pedestrians and other vehicles.
- If the trailer begins to vibrate abnormally, stop immediately. Shut off the tow vehicle engine. Repair all damage before commencing towing.
- Before servicing or making any adjustments to the trailer:
  - Stop the tow vehicle and set the parking brake.
  - Shut off the tow vehicle's engine and remove the key from ignition.
- Keep all nuts, bolts and other fasteners tightened securely. Replace any parts removed during servicing or adjustments.
- To ensure optimum performance and safety, always purchase genuine Toro replacement parts and accessories to keep the Toro all TORO. **Never use "will-fit" replacement parts and accessories made by other manufacturers.** Look for the Toro logo to assure genuineness. Using unapproved replacement parts and accessories could void the warranty of The Toro Company.

## Safety and Instruction Decals



Safety decals and instructions are easily visible to the operator and are located near any area of potential danger. Replace any decal that is damaged or lost.

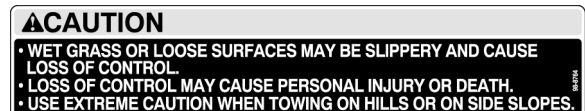


93-6689

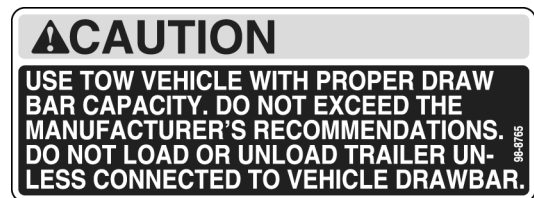
1. Warning—do not carry passengers.



98-8763



98-8764



98-8765

# Setup

**Note:** Determine the left and right sides of the machine from the normal operating position.

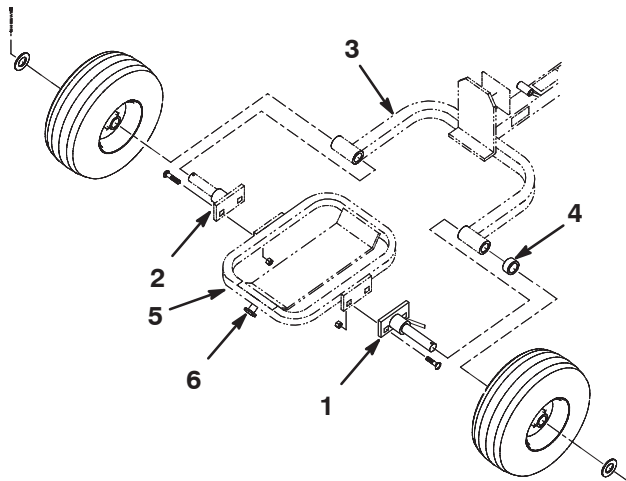
## Loose Parts Chart

**Note:** Use this chart as a checklist to ensure all parts necessary for assembly have been shipped. If any of these parts are missing, total setup cannot be completed.

Description	Qty.	Use
Frame	1	Mount Cradle and axles to frame
Right axle	1	
Left axle	1	
Cradle	1	
Carriage bolt, 1/2 x 1–1/2 in.	4	
Spacer	1	Mount wheels to axles
Wheel	2	
Washer	2	
Cotter pin	2	
Hitch tube	1	Mount hitch tube to frame tube
Capscrew, 1/2 x 2–1/2 in.	2	
Locknut, 1/2 in.	2	
Tongue plate	2	Mount tongue to hitch tube
Capscrew, 3/8 x 2–1/2 in.	2	
Locknut, 1/2 in.	2	
Retaining strap	1	Mount retaining strap to hitch tube
3/8 x 3 in.	1	
Locknut, 3/8 in.	1	
Clevis pin	1	Mount trailer to tow vehicle
Cotter pin	1	
Operator's manual	1	Read before operating the machine.
Parts catalog	1	

1. Insert the right and left axles into the frame (Fig. 1). The right axle shaft is longer.
2. Position the cradle between the axles aligning its mounting holes with the holes in the axles (Fig. 1). The cradle is to be positioned so the strap hook is to the rear.
3. Secure each axle to the cradle with (2) 1/2 x 1-1/2 in. carriage bolts and nuts (Fig. 1).
4. Insert the spacer onto the right axle (Fig. 1).
5. Insert the wheels onto the axles and secure each with a washer and cotter pin (Fig. 1).

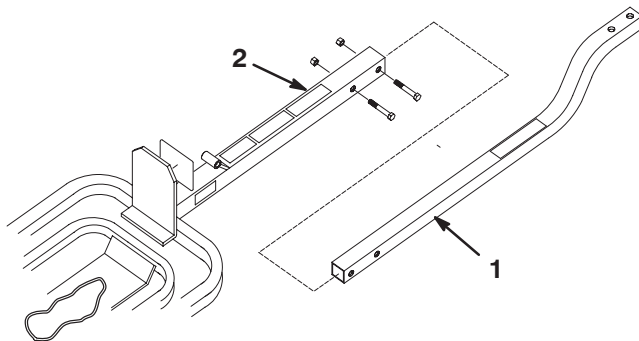
**Note:** Make sure the wheels are positioned on the axles with the valve stems to the outside.



**Figure 1**

- |               |               |
|---------------|---------------|
| 1. Right axle | 4. Spacer     |
| 2. Left axle  | 5. Cradle     |
| 3. Frame      | 6. Strap hook |

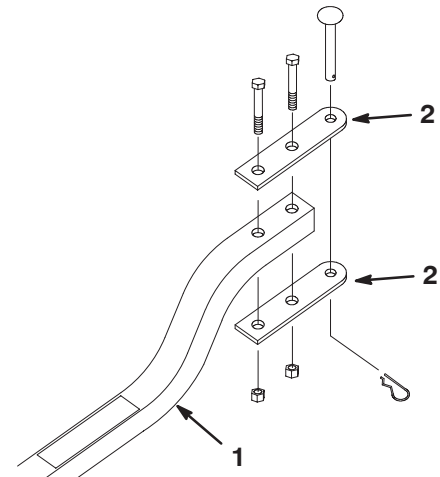
6. Connect the hitch tube to the frame tube with (2) 1/2 x 2-1/2 in. capscrews and nuts (Fig. 2). The head of the capscrew should be on the side of the frame tube with the larger hole and when tightened should recess into the holes until it contacts the hitch tube.



**Figure 2**

- |               |               |
|---------------|---------------|
| 1. Hitch tube | 2. Frame tube |
|---------------|---------------|

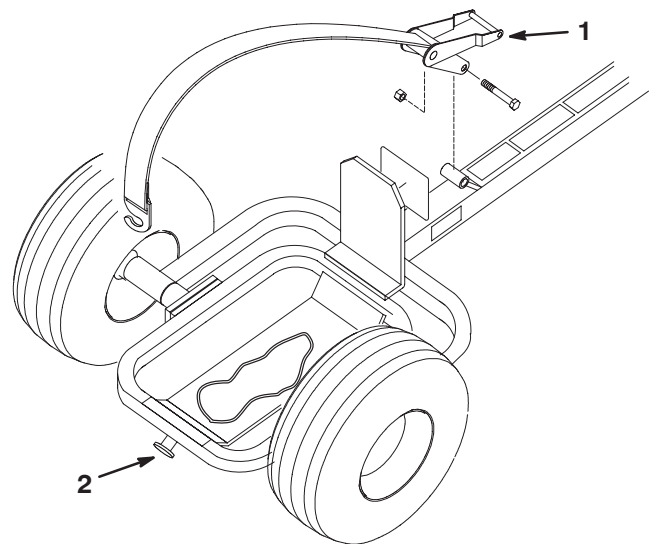
7. Mount a tongue plate to the top and bottom of the hitch tube with (2) 3/8 x 2-1/2 in. capscrews and locknuts. Position the plates as shown in figure 3.



**Figure 3**

- |               |                 |
|---------------|-----------------|
| 1. Hitch tube | 2. Tongue plate |
|---------------|-----------------|

8. Mount the retaining strap to the frame tube with a 3/8 x 3 in capscrew and nut (Fig. 4).



**Figure 4**

- |                    |                      |
|--------------------|----------------------|
| 1. Retaining strap | 2. Cradle strap hook |
|--------------------|----------------------|

9. Inflate tires to 12-14 psi.

# Operation

**Note:** Determine the left and right sides of the machine from the normal operating position.

## Attach the Trailer to the Tow Vehicle



### Caution



Use only a proper hitch pin and retaining pin.

- Failure to use a proper hitch pin or to retain the hitch pin with a hair pin could allow the HydroTote Trailer to become detached from the tow vehicle which could cause personal injury or death to the operator or a bystander.

1. Align the trailer hitch with the tow vehicle tow hitch tongue so that the tow vehicle tongue is between the trailer hitch tongues.
2. Insert hitch pin through the trailer hitch and the tow vehicles tow hitch tongue.
3. Insert the hair pin cotter through hitch pin.

## Loading the HydroJect onto the Trailer



### Caution



Attach the trailer to a tow vehicle before loading the HydroJect.

- Failure to attach the trailer to a tow vehicle prior to loading the HydroJect could allow the trailer to move uncontrollably.
- Uncontrolled movement of the trailer could cause personal injury or death to the operator or a bystander.



### Caution



When loading the HydroJect, always be aware of your surroundings. DO NOT operate near bystanders or other equipment.

- Load the HydroJect only on a level surface. Do not attempt to load the HydroJect on an incline, ramp, grade, slope or similar surface.
- Improper HydroJect loading or unloading procedures could cause personal injury or death to the operator or a bystander.

1. Tilt the cradle down as far as possible.
2. Position the retaining strap to the left side of the cradle to keep out of way.
3. Drive HydroJect onto the cradle allowing the cradle to pivot until the HydroJect drive wheel stops against the front of the trailers.
4. Engage the HydroJect parking brake and turn off the engine.
5. Slide the retaining strap onto the center of tire, hook the strap onto the cradle strap hook and tighten retaining strap securely with ratchet (Fig. 4).
6. Disengage the HydroJect parking brake.

**Important** Failure to disengage the parking brake could cause premature wear or failure of the parking brake.

7. Use extreme caution and slow speed when backing up the HydroJect Trailer with the HydroJect loaded and attached to the tow vehicle. The steering characteristics are much different than a single axle trailer.

## Towing the HydroJect Trailer

### Refer to Safety Instructions



### Caution



The towing capacity (HydroJect, HydroTote Trailer and hose) is approximately 1,350 lbs. The tow vehicle must have adequate braking and handling capability.

- Refer to the Tow Vehicle manual for specifications.

# Maintenance

**Note:** Determine the left and right sides of the machine from the normal operating position.

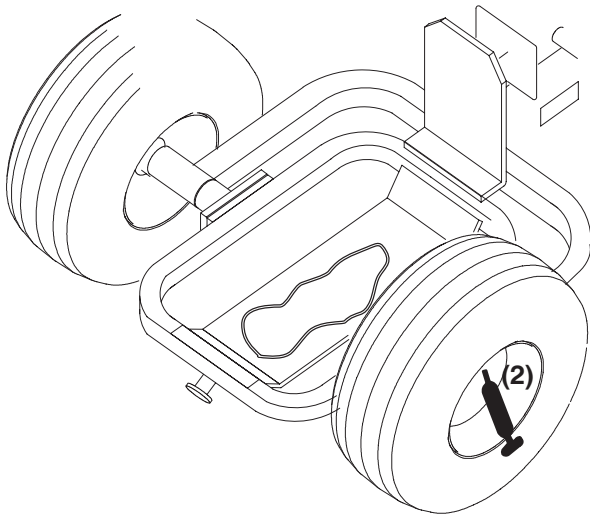
## Lubrication

Each trailer has (2) grease fittings (Fig. 5) that must be lubricated daily with No. 2 General Purpose Lithium Base Grease.

The lubrication points are the wheel assemblies (2).

**Important** Lubricating grease fittings immediately after washing helps purge water out of bearings and increases bearing life.

1. Wipe each grease fitting with a clean rag.
2. Apply grease until clean grease is seen coming out of the bearing.
3. Wipe excess grease away.



**Figure 5**

---

## Inspect Retaining Strap

Inspect the retaining strap regularly. If there are any cuts, tears or stitch deterioration the retaining strap assembly should be replaced immediately.



## The Toro General Commercial Products Warranty

### A Two-Year Limited Warranty

#### Conditions and Products Covered

The Toro Company and its affiliate, Toro Warranty Company, pursuant to an agreement between them, jointly warrant your Toro Commercial Product ("Product") to be free from defects in materials or workmanship for two years or 1500 operational hours\*, whichever occurs first. Where a warrantable condition exists, we will repair the Product at no cost to you including diagnosis, labor, parts, and transportation. This warranty begins on the date the Product is delivered to the original retail purchaser.

\* Product equipped with hour meter

#### Instructions for Obtaining Warranty Service

You are responsible for notifying the Commercial Products Distributor or Authorized Commercial Products Dealer from whom you purchased the Product as soon as you believe a warrantable condition exists.

If you need help locating a Commercial Products Distributor or Authorized Dealer, or if you have questions regarding your warranty rights or responsibilities, you may contact us at:

Toro Commercial Products Service Department  
Toro Warranty Company  
8111 Lyndale Avenue South  
Bloomington, MN 55420-1196  
952-888-8801 or 800-982-2740  
E-mail: commercial.service@toro.com

#### Owner Responsibilities

As the Product owner, you are responsible for required maintenance and adjustments stated in your operator's manual. Failure to perform required maintenance and adjustments can be grounds for disallowing a warranty claim.

#### Items and Conditions Not Covered

Not all product failures or malfunctions that occur during the warranty period are defects in materials or workmanship. This express warranty does not cover the following:

- Product failures which result from the use of non-Toro replacement parts, or from installation and use of add-on, modified, or unapproved accessories
- Product failures which result from failure to perform required maintenance and/or adjustments
- Product failures which result from operating the Product in an abusive, negligent or reckless manner
- Parts subject to consumption through use unless found to be defective. Examples of parts which are consumed, or used up, during normal Product operation include, but are not limited to, blades, reels, bedknives, tines, spark plugs, castor wheels, tires, filters, belts, and certain sprayer components such as diaphragms, nozzles, and check valves, etc.

#### Countries Other than the United States or Canada

Customers who have purchased Toro products exported from the United States or Canada should contact their Toro Distributor (Dealer) to obtain guarantee policies for your country, province, or state. If for any reason you are dissatisfied with your Distributor's service or have difficulty obtaining guarantee information, contact the Toro importer. If all other remedies fail, you may contact us at Toro Warranty Company.

- Failures caused by outside influence. Items considered to be outside influence include, but are not limited to, weather, storage practices, contamination, use of unapproved coolants, lubricants, additives, or chemicals, etc.
- Normal "wear and tear" items. Normal "wear and tear" includes, but is not limited to, damage to seats due to wear or abrasion, worn painted surfaces, scratched decals or windows, etc.

#### Parts

Parts scheduled for replacement as required maintenance are warranted for the period of time up to the scheduled replacement time for that part.

Parts replaced under this warranty become the property of Toro. Toro will make the final decision whether to repair any existing part or assembly or replace it. Toro may use factory remanufactured parts rather than new parts for some warranty repairs.

#### General Conditions

Repair by an Authorized Toro Distributor or Dealer is your sole remedy under this warranty.

**Neither The Toro Company nor Toro Warranty Company is liable for indirect, incidental or consequential damages in connection with the use of the Toro Products covered by this warranty, including any cost or expense of providing substitute equipment or service during reasonable periods of malfunction or non-use pending completion of repairs under this warranty. Except for the Emissions warranty referenced below, if applicable, there is no other express warranty. All implied warranties of merchantability and fitness for use are limited to the duration of this express warranty.**

Some states do not allow exclusions of incidental or consequential damages, or limitations on how long an implied warranty lasts, so the above exclusions and limitations may not apply to you.

This warranty gives you specific legal rights, and you may also have other rights which vary from state to state.

**Note regarding engine warranty:** The Emissions Control System on your Product may be covered by a separate warranty meeting requirements established by the U.S. Environmental Protection Agency (EPA) and/or the California Air Resources Board (CARB). The hour limitations set forth above do not apply to the Emissions Control System Warranty. Refer to the Engine Emission Control Warranty Statement printed in your operator's manual or contained in the engine manufacturer's documentation for details.