



Hardstop Kit

for Multi-Pro® Turf Sprayers and Workman® 200 Spray System

Model No. 114-9577

Installation Instructions

Safety

Safety and Instructional Decals



Safety decals and instructions are easily visible to the operator and are located near any area of potential danger. Replace any decal that is damaged or lost.



114-9576

1. Pinch point, hand—keep hand away from hinge.
-

Installation

Loose Parts

Use the chart below to verify that all parts have been shipped.

Procedure	Description	Qty.	Use
1	No parts required	–	Prepare the machine.
2	No parts required	–	Drill the boom.
3	Bracket Bumper Bolt (5/8 x 5 inches) Nut (5/8 inch) Bolt (5/16 x 1 inch) Nut (5/16 inch) Decal 114-9576	2 2 2 2 8 8 2	Install the stops.
4	No parts required	–	Adjust the booms to level.

Note: Determine the left and right sides of the machine from the normal operating position.



Preparing the Machine

No Parts Required

Procedure

Position the machine on a level surface, stop the engine, and engage parking brake.

Raise the booms into the transport position and remove the ignition key.



If you leave the key in the ignition switch, someone could accidentally start the engine and seriously injure you or other bystanders.

Remove the key from the ignition switch before you do any maintenance.

2

Drilling the Boom

No Parts Required

Procedure

1. Measure and mark the holes shown in Figure 1.

Use the flat edges of the boom for the measurements. When all holes are marked, use the bracket

Note: When all holes are marked the bracket can be used to verify proper spacing prior to drilling.

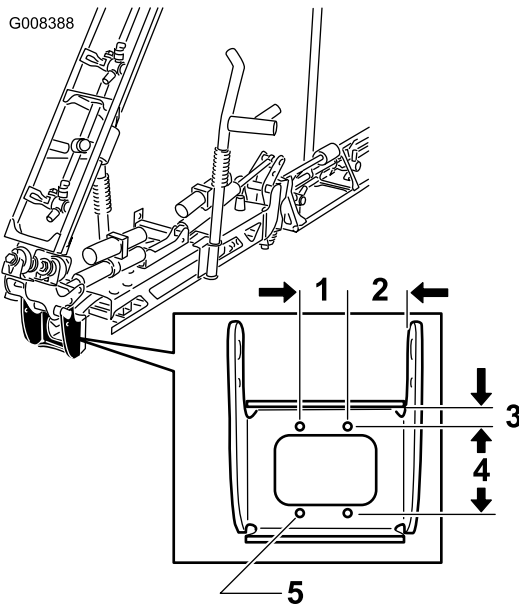


Figure 1

1. 2 inches
2. 2.27 inches
3. 0.78 inch
4. 3.625 inches
5. drill 0.375 (3/8) inch diameter hole

2. Drill the holes where marked. The holes should 0.375 or 3/8 of an inch in diameter.

3

Installing the Stops

Parts needed for this procedure:

2	Bracket
2	Bumper
2	Bolt (5/8 x 5 inches)
2	Nut (5/8 inch)
8	Bolt (5/16 x 1 inch)
8	Nut (5/16 inch)
2	Decal 114-9576

Procedure

1. Assemble the stops as shown Figure 2. Hand tighten only at this time to allow for later adjustment.

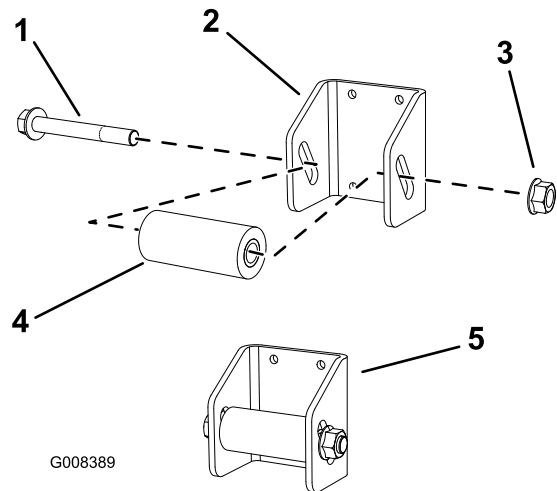


Figure 2

1. Bolt (5/8 x 5 inches)
2. Bracket
3. Nut (5/8 inch)
4. Bumper
5. Assembled

2. Install the stops to the frame using 4 bolts (5/16 x 1 inch) and nuts (5/16 inch) as shown in (Figure 3).

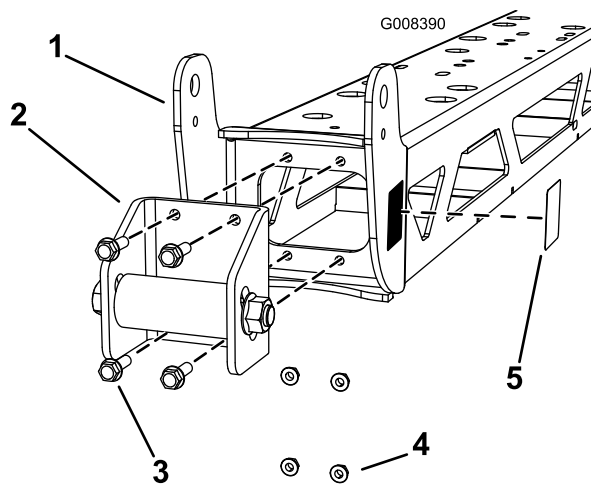


Figure 3

Right side shown

- | | |
|---------------------------------|---------------------|
| 1. Center boom assembly | 4. nuts (5/16 inch) |
| 2. Assembled bracket and bumper | 5. Decal |
| 3. Bolt (5/16 x 1 inch) | |

-
3. Install a decal 114-9576 as shown in Figure 3.

4

Adjusting the Booms to Level

No Parts Required

Procedure

1. At the operator's position, turn the ignition key to On to energize the system.
2. Move the booms into position so that they are level with the ground.
3. Remove the key and exit the operator's position.
4. At the hinge, adjust the position of the bumpers so the boom can not move past level with the ground. Take care to make sure the bumper is level.
5. Tighten the bolt and nut to lock the bumpers into the adjusted position. Torque the fasteners to 135-165 ft-lbs (183-223 N-m).

Note: The bumper may experience some compression over time. If the booms drop below level, use this procedure to readjust the bumper position needed.