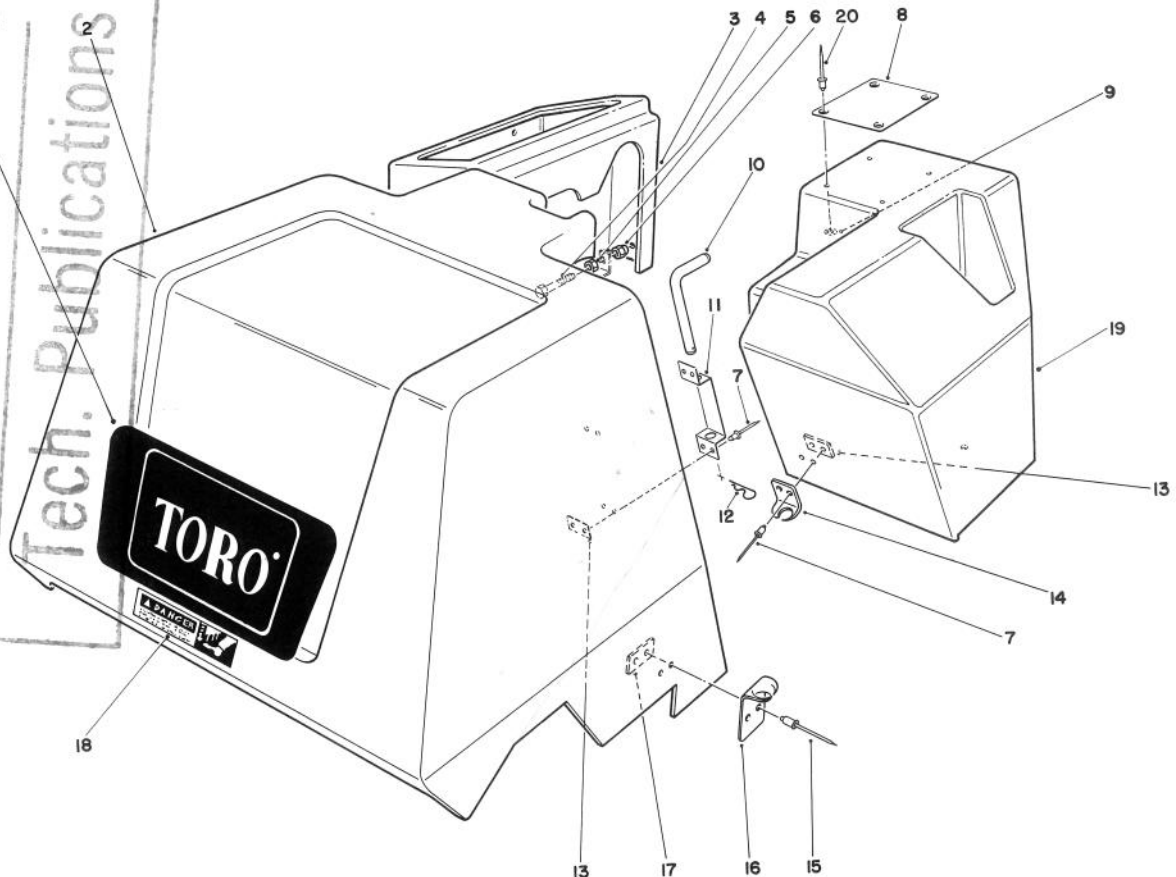


MODEL NO. 09110-40001 & UP	PARTS CATALOG
GREENS AERATOR	

ONLY COPY
DO NOT REMOVE

Tech. Publications

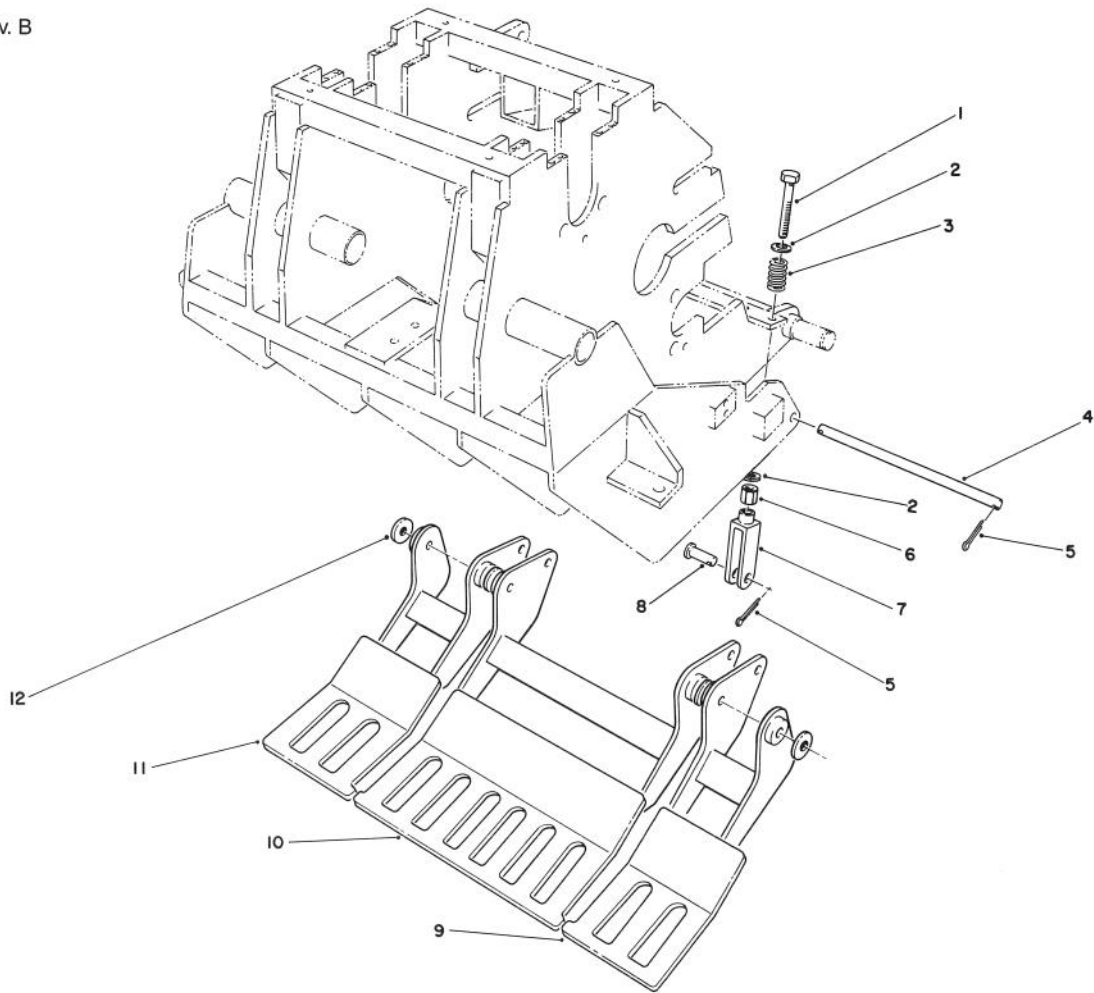


T-0223

COVER ASSEMBLY

Ref. No.	Part No.	Description	No. Used
1	59-4350	Decal - Toro	1
2	66-4130	Cover - Coring Head	1
3	66-4110	Cover - Controls	1
4	322-2	Screw - Cap Hex Hd.	1
5	3218-2	Nut - Jam	1
6	32111-8	Cap & Locknut	1
7	3269-8	Rivet - Pop	10
8	66-4840	Shield - Heat	1
9	5-1254	Washer	4
10	66-4060	Pin - Idler	1

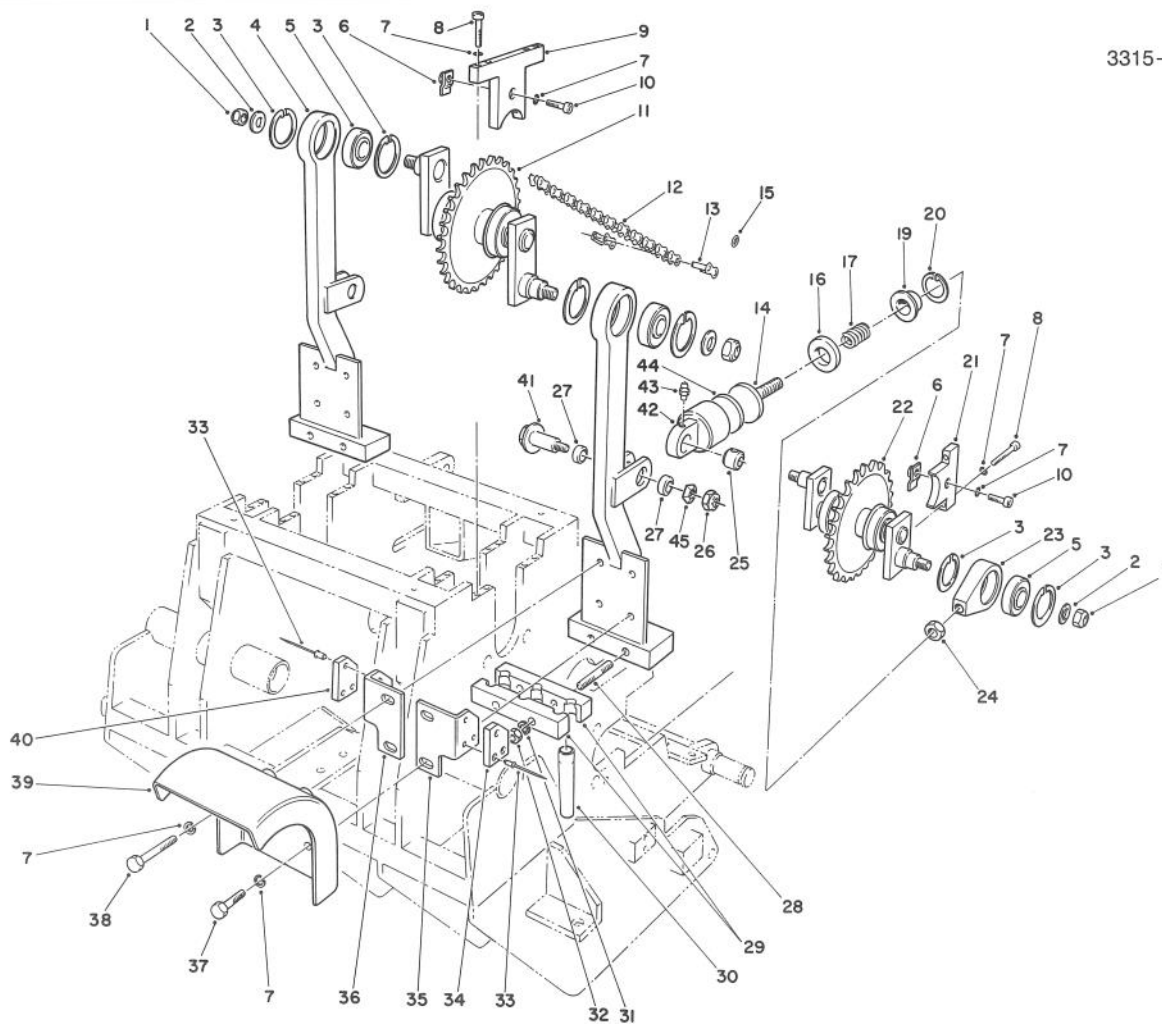
Ref. No.	Part No.	Description	No. Used
11	66-4440	Holder - Idler Pin	1
12	3290-355	Pin - Hair, Cotter	1
13	59-9610	Plate - Backup	5
14	249-40	Keeper	3
15	3269-4	Rivet - Pop	4
16	249-38	Keeper	2
17	59-9611	Plate - Backup	2
18	59-9930	Decal - Danger	1
19	66-4120	Cover - Clutch	1
20	3269-17	Rivet - Pop	4



T-0224A

TURF GUARD ASSEMBLY

Ref. No.	Part No.	Description	No. Used	Ref. No.	Part No.	Description	No. Used
1	3211-12	Screw-Cap Hex Hd.	4	7	282-22	Clevis	4
2	3256-4	Washer - Flat	8	8	283-2	Pin - Clevis	4
3	59-3490	Spring - Compression	4	9	72-4660	Turf Guard - R.H.	1
4	59-2770	Rod - Pivot	2	10	72-4680	Turf Guard - Center	1
5	3272-6	Pin - Cotter	8	11	72-4640	Turf Guard - L.H.	1
6	3219-3	Nut	4	12	3256-26	Washer - Flat	6



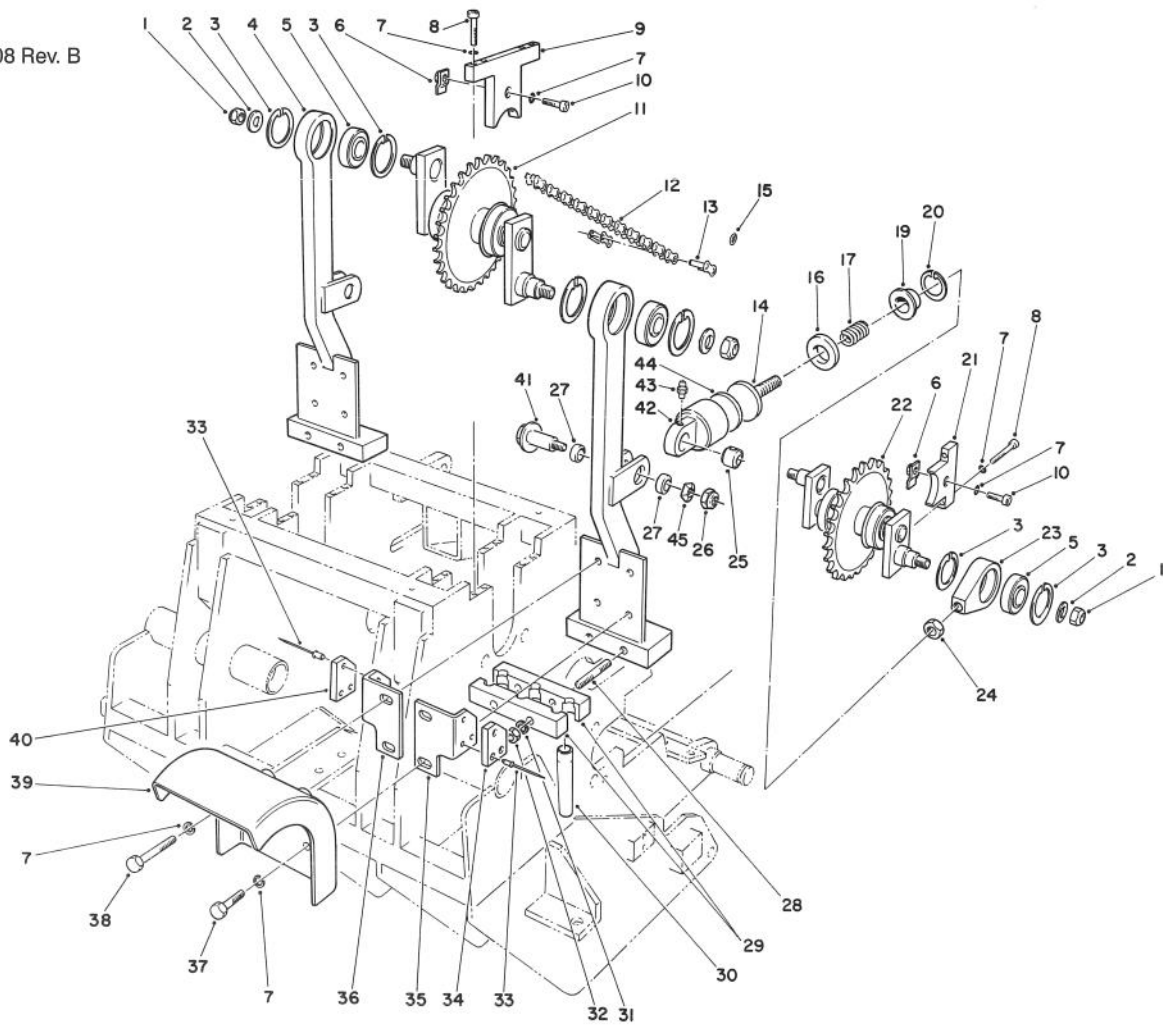
T-0225

TINE ARM & CRANK ASSEMBLY

Ref. No.	Part No.	Description	No. Used	Ref. No.	Part No.	Description	No. Used
1	3296-67	Nut - Hex	8	28	61-9160	Stud	8
2	3256-44	Washer - Flat	8	29	59-2500	Block	8
3	32120-22	Ring - Retaining	16	*	62-4610	Block (For 3/4" Tines)	8
4	13-1509	Arm-Tine (Incl. Ref. #1, 27 & 28)	4	30	59-3670	Tine - Coring, 5/8"	12
5	251-312	Bearing	8	*	66-9140	Tine - Coring, 1/2"	12
6	59-2710	Clip - Retaining	12	*	59-3690	Tine - Coring, 3/8"	12
7	3253-21	Washer - Lock	52	*	62-4600	Tine - Coring, 3/4"	12
8	3274-50	Screw - Hex Socket Hd.	24	*	59-9770	Tine - Coring, 5/8" Long Wear	12
†9		Cap-Bearing	4	*	92-7941	Tine - Open Center 7/8"	12
10	3274-7	Screw - Hex Socket Hd.	12	*	77-5320	Tine - Spiker, 5/16"	12
11	66-4030	Assembly - Crank, Long	2	31	3253-7	Washer - Lock	8
12	59-2080	Chain - Roller	2	32	3217-9	Nut-Hex	8
13	287-13	Link - Connecting	2	33	3269-3	Rivet - Pop	24
14	70-9770	Rod-Ram	4	34	59-2520	Plate - Wear R.H.	4
15	72-4760	O-Ring Seal, Chain	A/R	35	66-8980	Assy. - Wear Plate, R.H. (Incl. Ref. #33 & 34)	4
16	59-3480	Cushion	4	36	66-8990	Assy. - Wear Plate, L.H. (Incl. Ref. #33 & 40)	4
17	66-9010	Spring - Compression	4	37	323-6	Screw - Cap Hex Hd.	8
19	59-3450	Retainer	4	38	323-11	Screw - Cap Hex Hd.	8
20	32151-75	Ring - Retaining	4	39	59-4220	Deflector - Kickout	4
†21		Cap - Bearing	4	40	59-2550	Plate - Wear L.H.	4
22	66-4040	Assembly - Crank, Short	2	41	80-3830	Bolt - Shoulder	4
23	59-3410	Head - Bearing	4	42	59-3420	Housing	4
24	3218-6	Nut - Jam	4	43	302-5	Fitting - Grease	4
25	59-3520	Bushing - Long	4	44	59-3470	Cushion	4
26	3296-44	Nut-Lock	4				
27	59-3510	Bushing - Short	8				

*Not Illustrated

†Included with Coring Head Frame Assembly #72-9100.



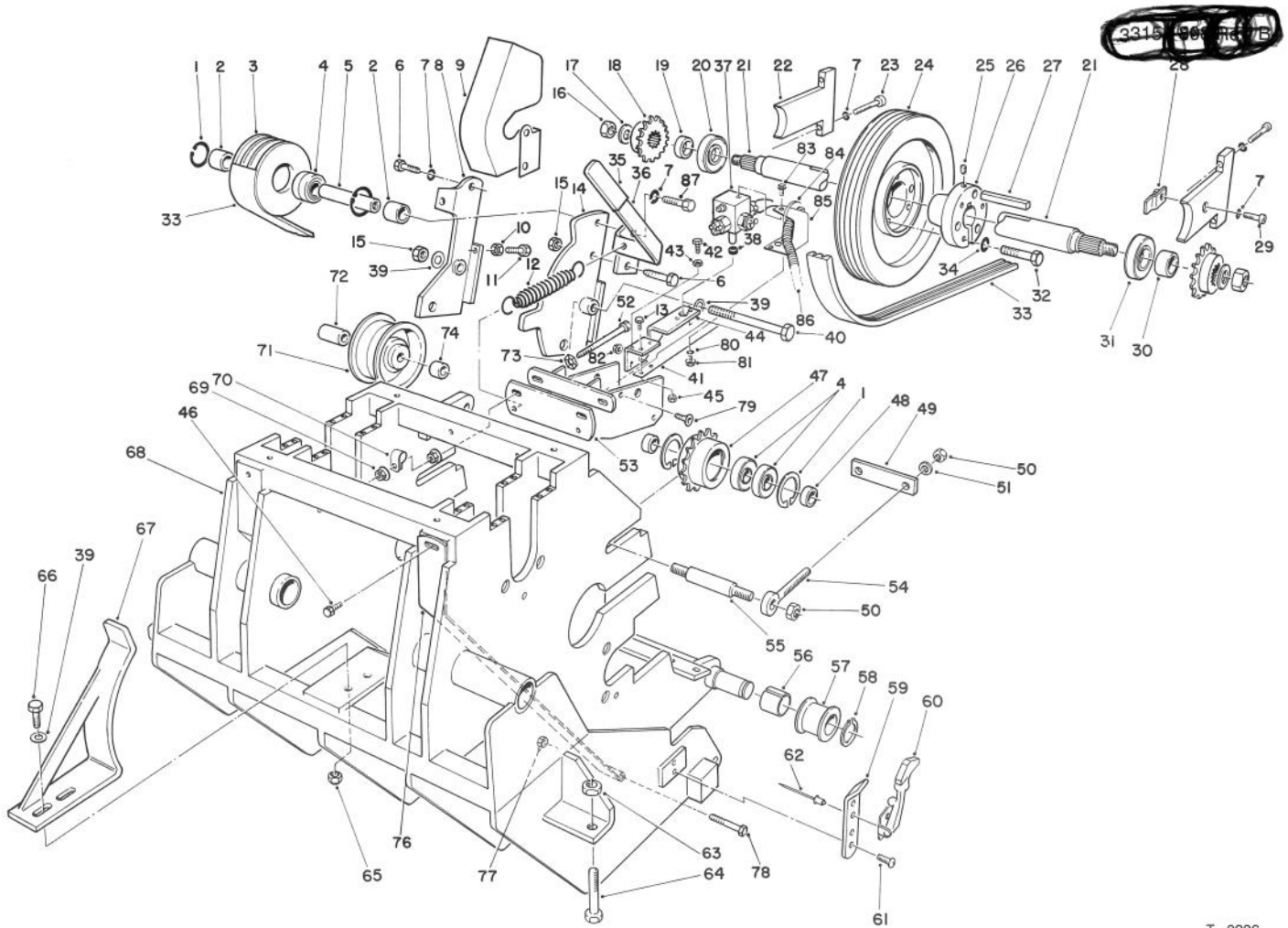
T-0225

TINE ARM & CRANK ASSEMBLY (Continued)

Ref. No.	Part No.	Description	No. Used
45	3290-224	Washer - Pyramidal	4
*	62-4740	Timing Rod	4

Ref. No.	Part No.	Description	No. Used
*	12-3819	Assembly - Damper (Incl. Ref.#14, 16,17, 19-20, 25 & 42-44)	1

*Not Illustrated

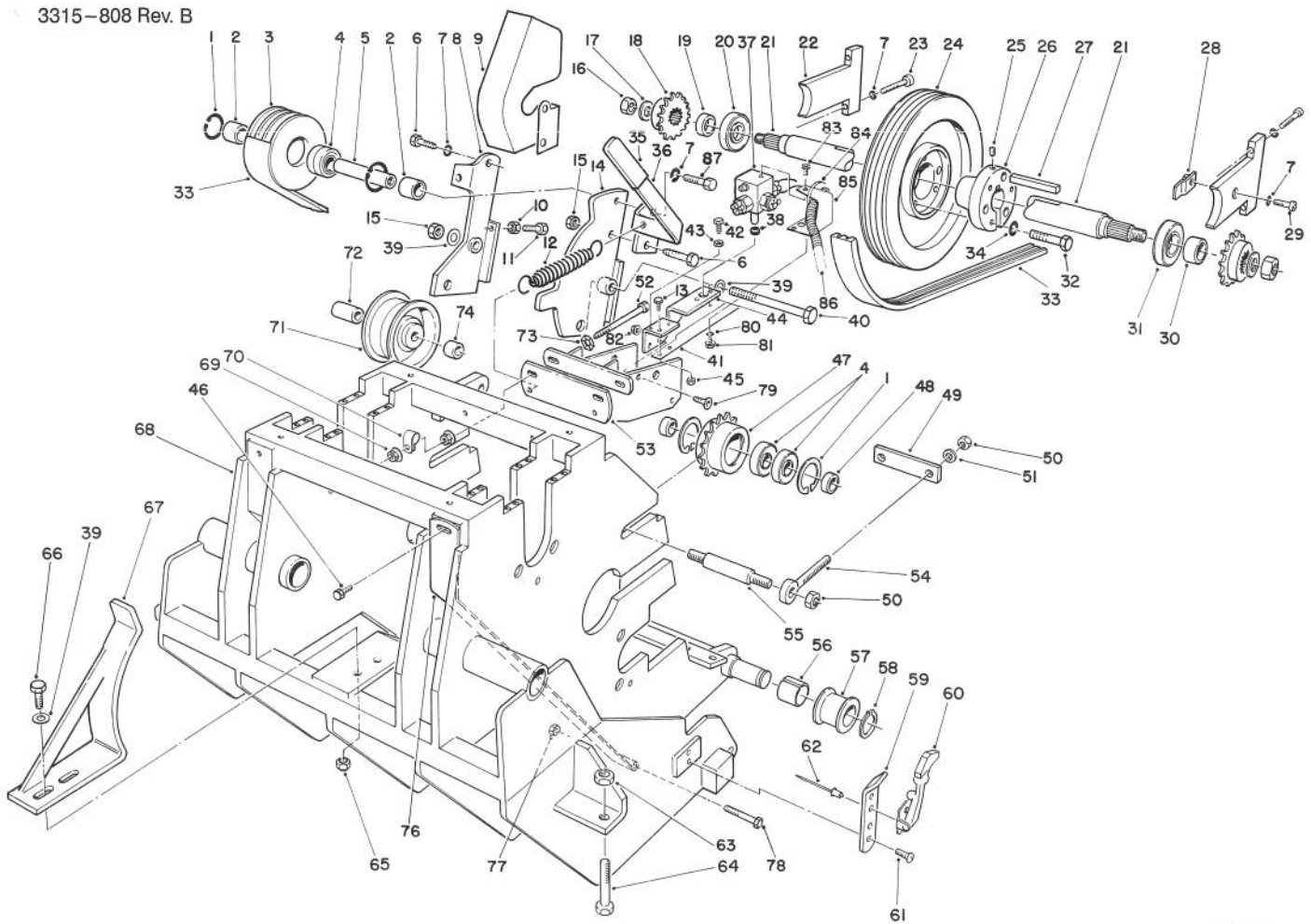


T-0226

CORING HEAD DRIVE ASSEMBLY

Ref. No.	Part No.	Description	No. Used
1	32120-11	Ring - Retaining	6
2	66-4380	Spacer	2
3	66-3470	Pulley - Idler	1
4	251-297	Bearing	6
5	66-3480	Shaft - Idler	1
6	323-6	Screw - Cap, Hex. Hd.	2
7	3253-21	Washer - Lock	9
8	66-4320	Bracket W.A. - Idler L.H.	1
9	66-8910	Guard - Pulley	1
10	3218-1	Nut - Jam	2
11	321-43	Screw - Cap, Hex. Hd.	2
12	66-4270	Spring - Extension	2
13	3290-359	Screw - Machine, Hex. Hd.	2
14	66-4280	Bracket W.A. - Idler R.H.	1
15	32153-2	Nut - Lock	2
16	3296-67	Nut - Lock	2
17	3256-44	Washer - Flat	2
18	66-3790	Sprocket	2
19	66-4690	Spacer	1
20	251-312	Bearing	1
21	66-3840	Shaft - Power	1
22		Cap - Bearing	2
23	3274-50	Screw - Cap, Socket Hd.	4
24	59-2130	Pulley	1
25	3245-2	Screw - Set	1
26	59-3790	Bushing Assembly (Incl. Ref. #25, 32 & 34)	1

Ref. No.	Part No.	Description	No. Used
27	59-4210	Key	1
28	59-2710	Clip - Retaining	3
29	3274-7	Screw - Cap, Socket Hd.	3
30	66-4680	Spacer	1
31	251-313	Bearing	1
32	322-7	Screw - Cap, Hex. Hd.	3
33	66-4070	V-Belt	1
34	3253-4	Washer - Lock	3
35	3-7877	Grip - Handle	1
36	66-4560	Handle	1
37		Assembly - Switch	1
38	253-166	Seal	1
39	3256-24	Washer - Flat	4
40	323-25	Screw - Cap, Hex. Hd.	1
41	66-4480	Actuator - Switch	1
42	3290-360	Screw - Hex. Head	1
43	3217-26	Nut - Jam	1
44	80-3820	Bracket - Switch	1
45	3296-12	Nut - Lock	2
46	46-8560	Screw - Thread Forming	2
47	59-2390	Sprocket	2
48	59-2600	Bushing	4
49	59-2070	Bar - Keeper	2
50	3296-23	Nut - Lock	8
51	3256-26	Washer - Flat	4
52	323-20	Screw - Cap, Hex. Hd.	2
53	80-4020	Bracket - Idler Pulley Pivot	1



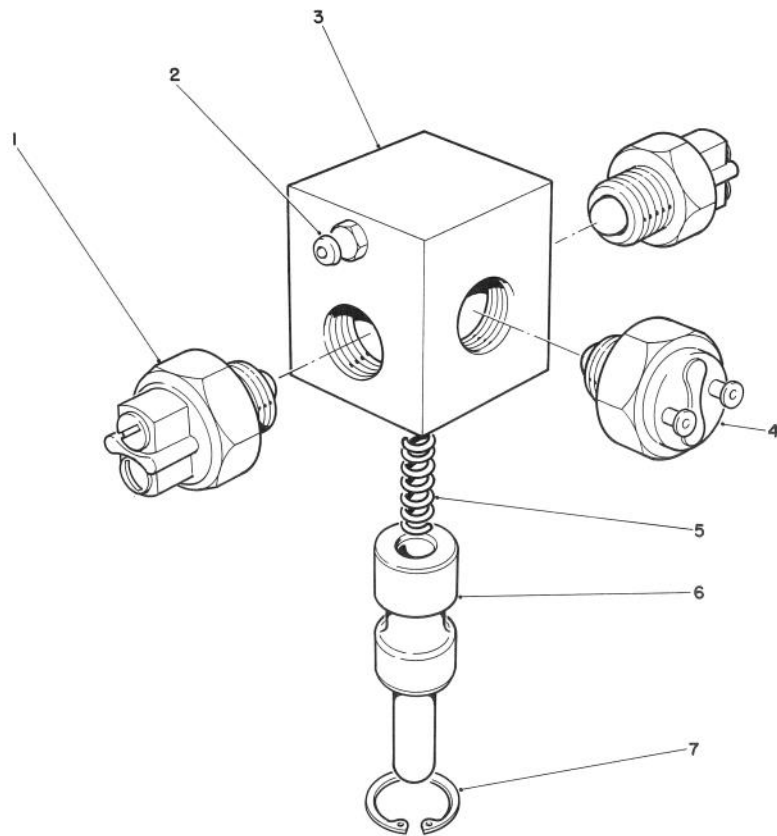
T-0226

CORING HEAD DRIVE ASSEMBLY (Continued)

Ref. No.	Part No.	Description	No. Used
54	59-2620	Eye Bolt	4
55	59-2610	Shaft	2
56	256-319	Bushing - Split	2
57	84-8480	Sleeve	2
58	32151-77	Ring - Retaining	2
59	59-9640	Plate - Handle	2
60	59-9750	Assembly - Latch	2
61	32140-29	Screw - Washer Hd.	4
62	3269-4	Rivet - Pop	4
63	3218-5	Nut - Jam	2
64	60-9870	Screw - Adjustment	2
65	3296-59	Nut - Lock	2
66	323-4	Screw - Cap, Hex. Hd.	2
67	66-3810	Guide W.A. - Belt	1
68	72-9100	Coring Head W.A.	1
69	32128-19	Nut - Lock, Flange Hd.	3
70	2412-68	R-Clamp	1
71	37-5760	Pulley - Idler	1
72	59-2580	Spacer - Long	1

Ref. No.	Part No.	Description	No. Used
73	3290-224	Washer - Lock, Pyramidal	2
74	59-2570	Spacer - Short	1
76	76-2370	Guard - Chair	2
77	3296-42	Nut - Lock	2
78	321-33	Screw - Cap, Hex. Hd.	2
79	3289-4	Screw - Flat Hd. Hex. Soc.	2
80	3253-12	Washer - Lock	2
81	32105-8	Screw - Washer Head	2
82	32128-33	Nut - Flange	2
83	32144-73	Screw - Hex. Washer Head Thread Forming	1
84	3290-378	Tie - Cable	1
85	80-3930	Guard - Switch	1
86	80-3810	Wiring Harness - Coring Head Switch	1
87	323-7	Screw - Cap Hex. Hd. Coring Head Stand Model No. 09152 (Optional)	1
*			

*Not Illustrated

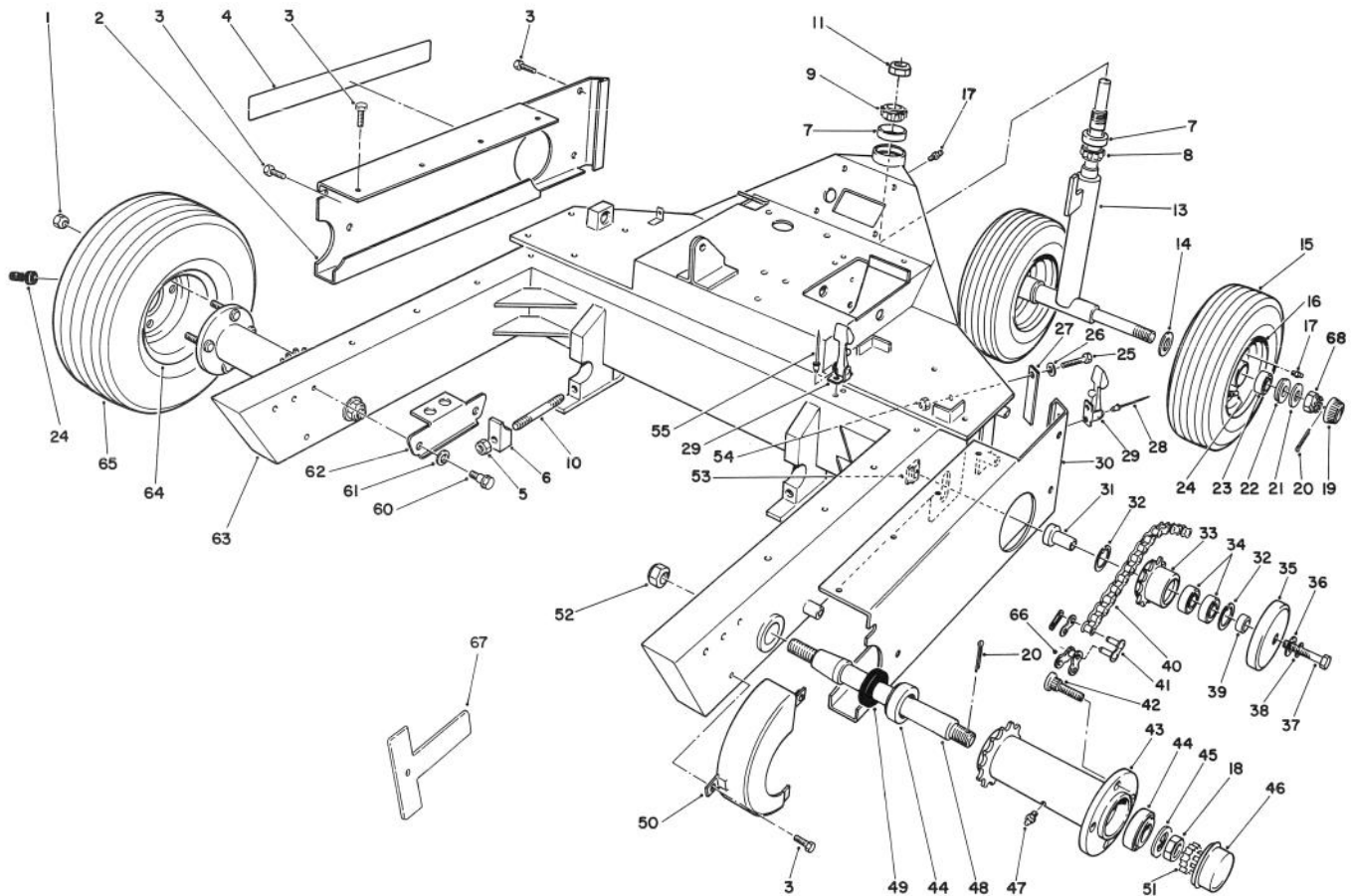


T-1173

SWITCH ASSEMBLY – CORING HEAD

Ref. No.	Part No.	Description	No. Used
1	19-2530	Switch – Start. Safety N.O.	2
2	302-22	Fitting – Grease	1
3	80-2830	Housing Switch	1
4	28-4250	Switch – Neutral N. C.	1

Ref. No.	Part No.	Description	No. Used
5	10-4850	Spring – Compression	1
6	80-2840	Plunger – Switch	1
7	32151-54	Ring – Retaining	1



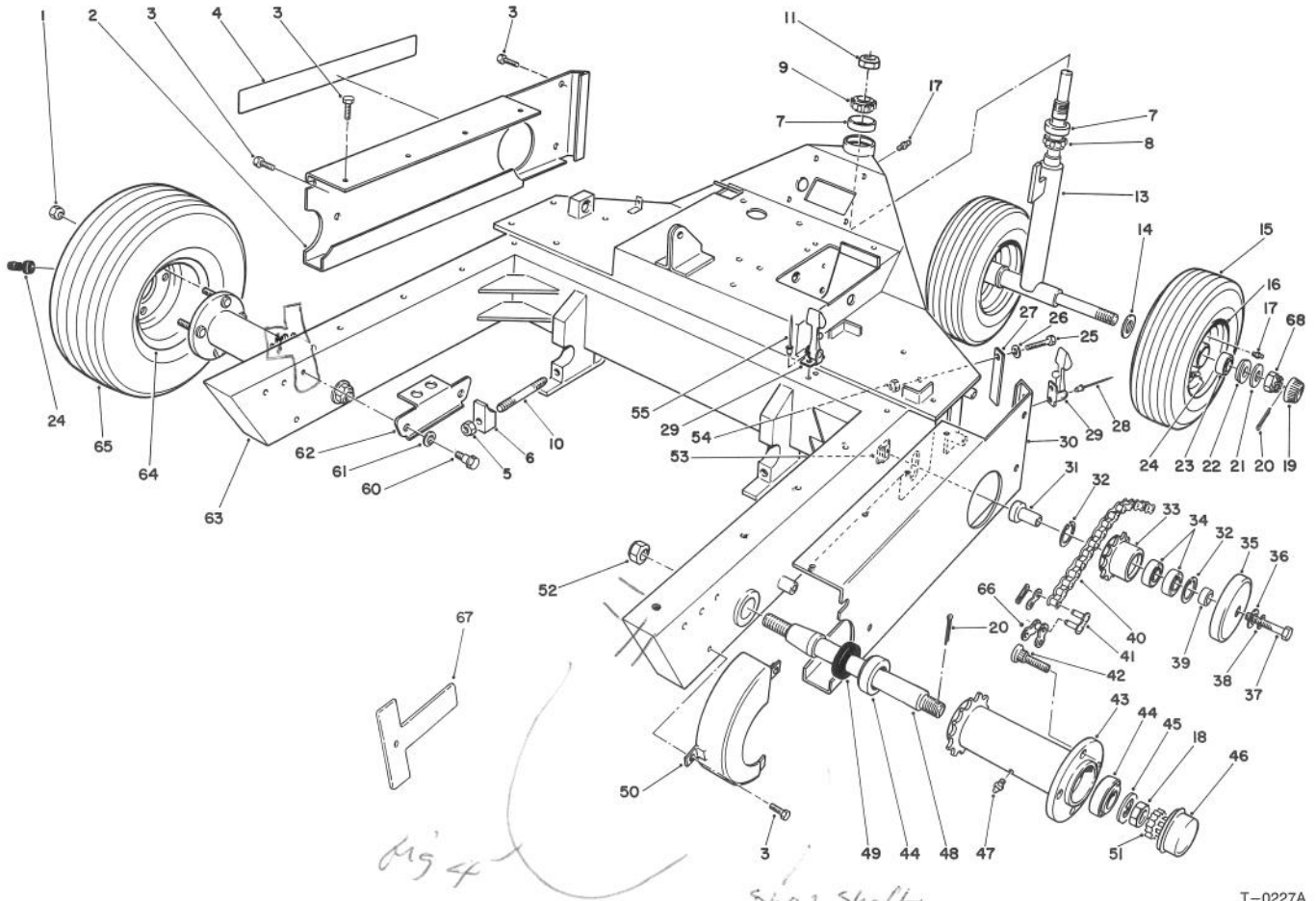
T-0227A

CHASSIS ASSEMBLY

Ref. No.	Part No.	Description	No. Used
1	242-50	Nut - Lug	8
2	66-9070	Guard - Chassis L.H.	1
3	46-8560	Screw - Cap Hex. Hd.	18
4	59-4440	Decal - Greens Aerator	2
5	3296-45	Nut - Lock	2
6	82-8020	Clamp	2
7	254-61	Cup - Bearing	2
8	254-70	Cone - Bearing	1
9	254-62	Cone - Bearing	1
10	61-9160	Stud	2
11	3296-68	Nut - Lock	1
13	80-2710	Assembly - Front Axle	1
14	22-6090	Washer - Thrust	2
15	231-126	Tire	2
16	241-123	Rim	2
17	302-5	Fitting - Grease	3
18	3220-7	Nut - Jam	2
19	61-9780	Cap - Hub	2
20	3272-13	Pin - Cotter	4
21	28-2480	Washer	2
22	59-9650	Retainer - Bearing	4
23	252-105	Bearing - Roller	4
24	232-35	Stem - Valve w/Cap	4
25	321-6	Screw - Cap, Hex Hd.	2
26	3256-22	Washer - Flat	2
27	59-9460	Guide	2

Ref. No.	Part No.	Description	No. Used
28	3296-8	Rivet - Pop	4
29	59-9740	Assembly - Latch	3
30	59-3240	Guard - Chassis R.H.	1
31	59-2420	Bushing	2
32	32120-11	Ring - Retaining	4
33	59-2390	Sprocket - Idler	2
34	251-297	Bearing - Ball	4
35	59-9620	Cover - Idler	2
36	3256-26	Washer - Flat	2
37	325-13	Screw - Cap Hex. Hd.	2
38	3253-7	Washer - Lock	2
39	59-9630	Spacer	2
40	59-2090	Chain - Roller	2
41	2710-16	Link - Connecting	2
42	10-6830	Stud - Drive	8
43	59-4040	Assembly - Hub (Incl. Ref. #42)	2
44	254-105	Bearing - Roller	4
45	93-0309	Washer - Tab	2
46	59-2380	Cap - Dust	2
47	302-10	Grease Fitting	2
48	93-0177	Shaft	2
49	253-158	Seal - Shaft	2
50	59-3280	Guard - Sprocket R.H.	1
*	59-3270	Guard - Sprocket L.H.	1
51	93-0307	Nut - Retainer	2

*Not Illustrated

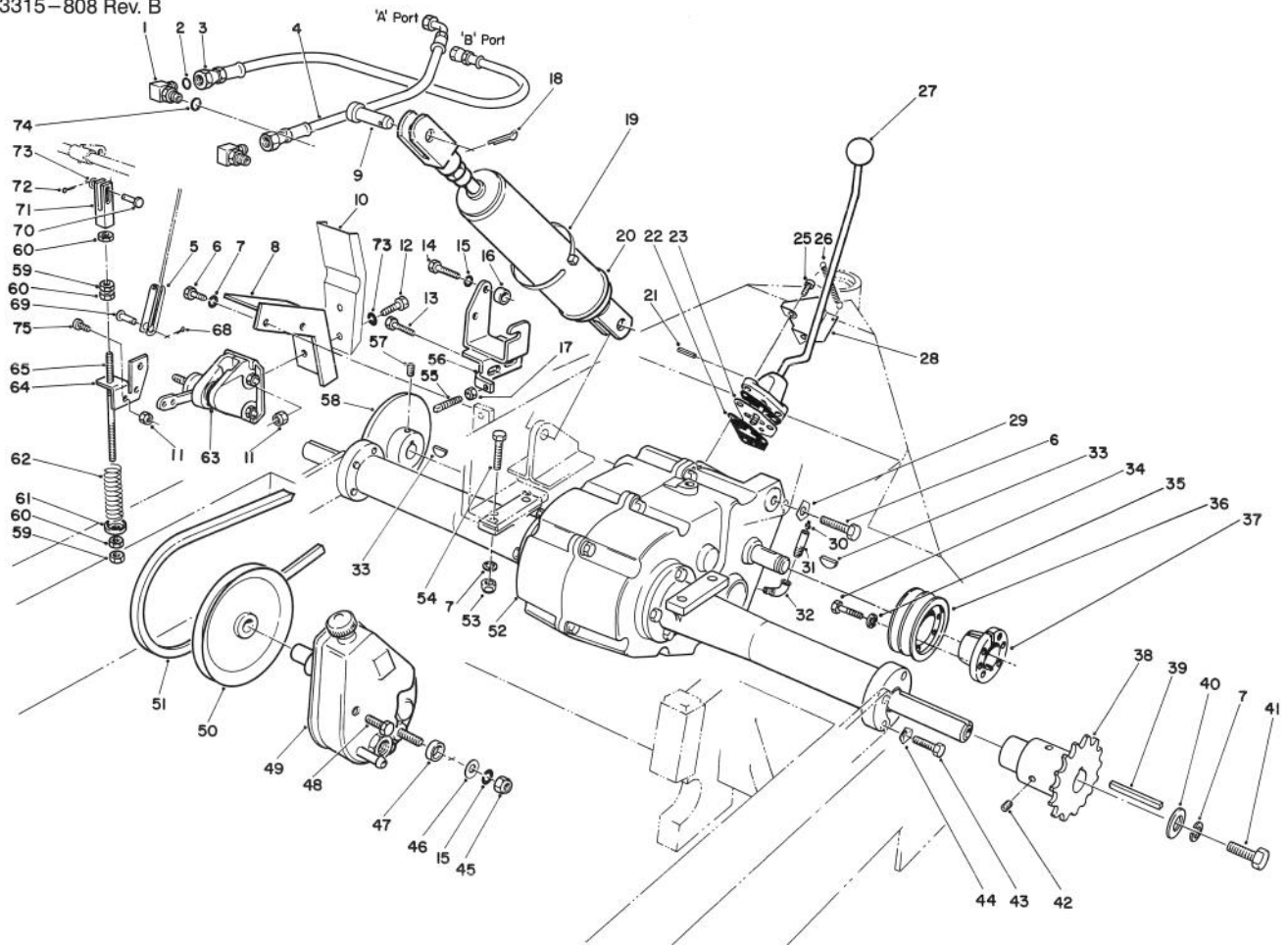


T-0227A

CHASSIS ASSEMBLY (Continued)

Ref. No.	Part No.	Description	No. Used
52	3296-15	Nut - Lock	2
53	59-2430	Nut - Special	2
54	3296-42	Nut - Lock	2
55	3290-271	Rivet - Pop	2
60	5-2490	Bolt - Shoulder	2
61	3-3287	Spacer	2
62	66-4530	Bracket - Lockup	2

Ref. No.	Part No.	Description	No. Used
63	72-9000	Frame	1
64	217-60	Rim	2
65	231-119	Tire	2
66	2710-20	Link - Single Pitch	2
67	60-9930	Frame Gauge	1
68	32136-5	Nut - Hex. Slotted	2

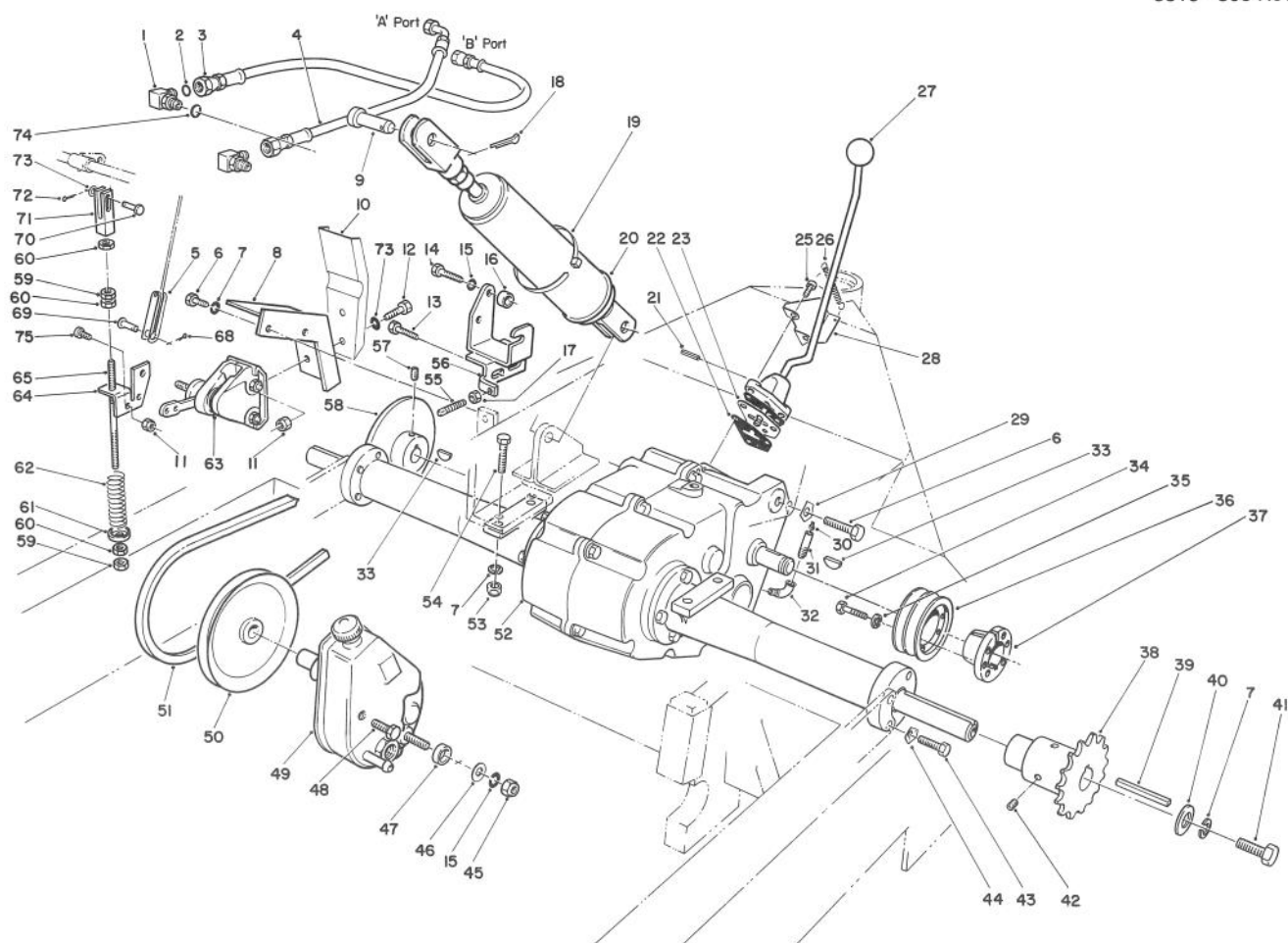


T-0228A

TRANSAXLE, BRAKE & PUMP ASSEMBLY

Ref. No.	Part No.	Description	No. Used
1	340-82	Fitting (Incl. Ref. #2 & 74)	2
2	237-21	O-Ring	2
3	76-2300	Hose - Cylinder	1
4	59-4160	Hose - Cylinder	1
5	66-3930	Clevis	1
6	323-6	Screw - Cap, Hex. Hd.	3
7	3253-21	Washer - Lock	8
8	76-2620	Bracket W.A.	1
9	283-74	Pin - Clevis	2
10	72-9120	Pan - Engine Oil Drain	1
11	3296-42	Nut - Lock	3
12	321-4	Screw - Cap, Hex. Hd.	2
13	11-0590	Screw - Thread Forming Hex. Washer Hd.	2
14	48-9470	Screw - Cap Hex Hd.	2
15	3253-6	Washer - Lock	3
16	59-4320	Spacer	2
17	3218-3	Nut - Jam	1
18	3272-12	Pin - Cotter	2
19	3290-379	Tie - Cable	1
20	62-4660	Assembly - Cylinder	1
21	32121-20	Pin - Roll	1
22	27-6390	Gasket	2
23	66-3290	Plate - Guide Shift	1
25	3274-26	Screw - Socket Hd.	3
26	66-4460	Spring	1
27	233-13	Knob	1

Ref. No.	Part No.	Description	No. Used
28	66-3920	Bracket - Spring	1
29	3290-224	Washer - Pyramidal	1
30	281-1	Plug - Oil	1
31	68-3110	Tube - Oil	1
32	2811-10	Elbow - Street	1
33	3257-5	Key	2
34	321-13	Screw - Cap, Hex. Hd.	3
35	3253-3	Washer - Lock	3
36	59-2140	Pulley	1
37	59-2150	Bushing (Incl. Ref. #34 & 35)	1
38	59-3110	Sprocket	2
39	5-0786	Key	2
40	3-4685	Washer - Thrust	2
41	323-5	Screw - Cap, Hex. Hd.	2
42	3247-2	Screw - Set	4
43	322-5	Screw - Cap, Hex. Hd.	4
44	3290-238	Washer - Pyramidal	4
45	21-0360	Hex Nut (Metric)	1
46	3256-25	Washer - Flat	1
47	59-4310	Spacer	1
48	60-9920	Screw (Metric)	1
49	44-7800	Pump - Steering	1
50	38-1830	Pulley - Steering Pump	1
51	59-4200	V-Belt	1
52	66-4590	Transaxle	1
53	3217-7	Nut	4

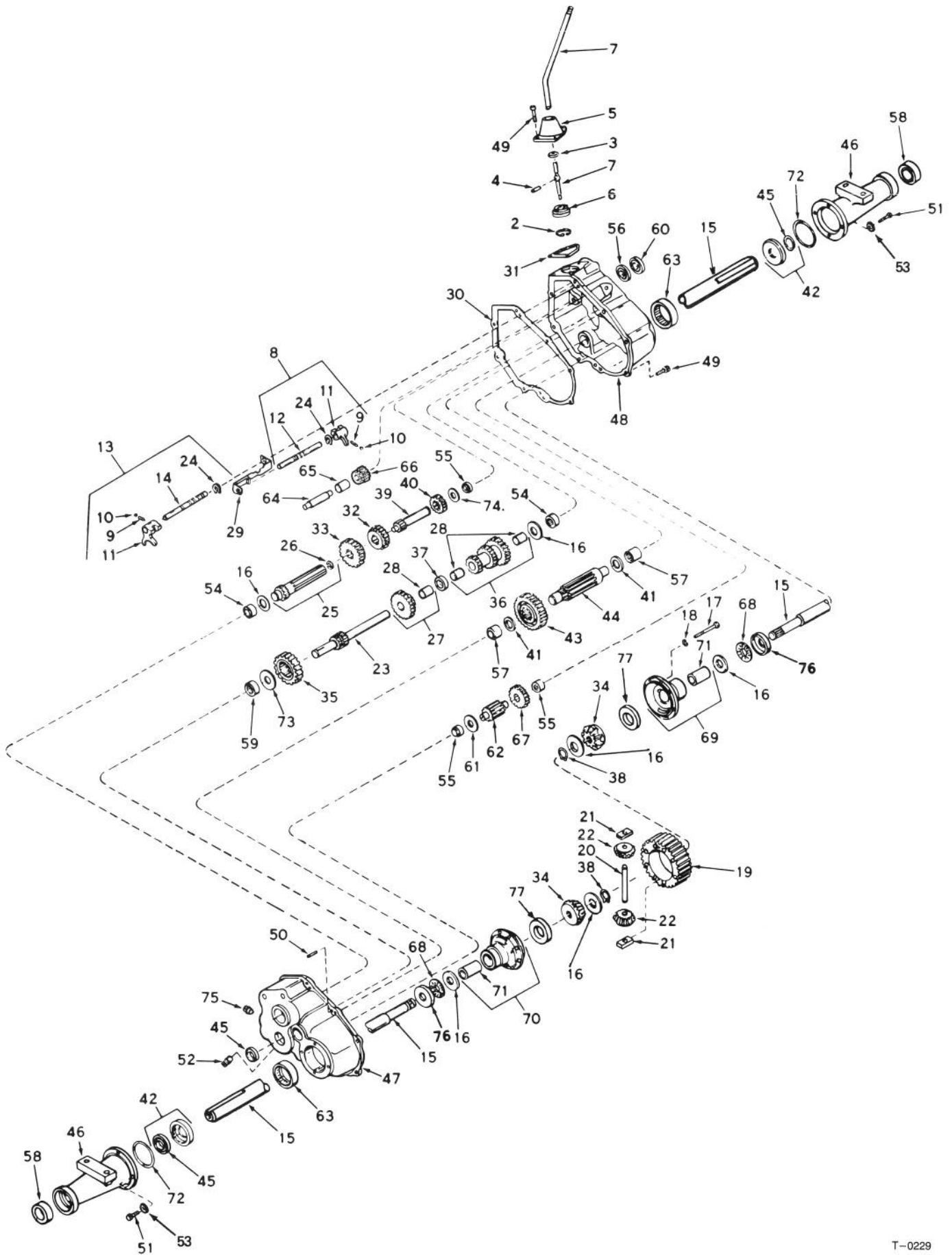


T-0228A

TRANSAXLE, BRAKE & PUMP ASSEMBLY (Continued)

Ref. No.	Part No.	Description	No. Used	Ref. No.	Part No.	Description	No. Used
54	323-10	Screw - Cap, Hex. Hd.	4	64	80-3890	Arm - Brake	1
55	3243-9	Screw - Set, Sq. Hd.	1	65	66-3400	Rod - Brake Take-up	1
56	72-4860	Bracket - Pump Support	1	68	3272-4	Pin - Cotter	1
57	3245-33	Screw - Set	2	69	283-2	Pin - Clevis	1
58	59-4100	Brake W.A. - Disc	1	70	283-67	Pin - Clevis	1
59	3220-1	Nut - Jam	2	71	66-4600	Clevis - Brake	1
60	3219-1	Nut - Hex.	3	72	3272-4	Pin - Cotter	1
61	66-3390	Retainer - Brake Spring	1	73	3296-22	Washer - Flat	3
62	66-4150	Spring	1	74	237-42	O-Ring	2
63	76-2590	Brake - Caliper	1	75	321-5	Screw - Cap Hex. Hd.	2

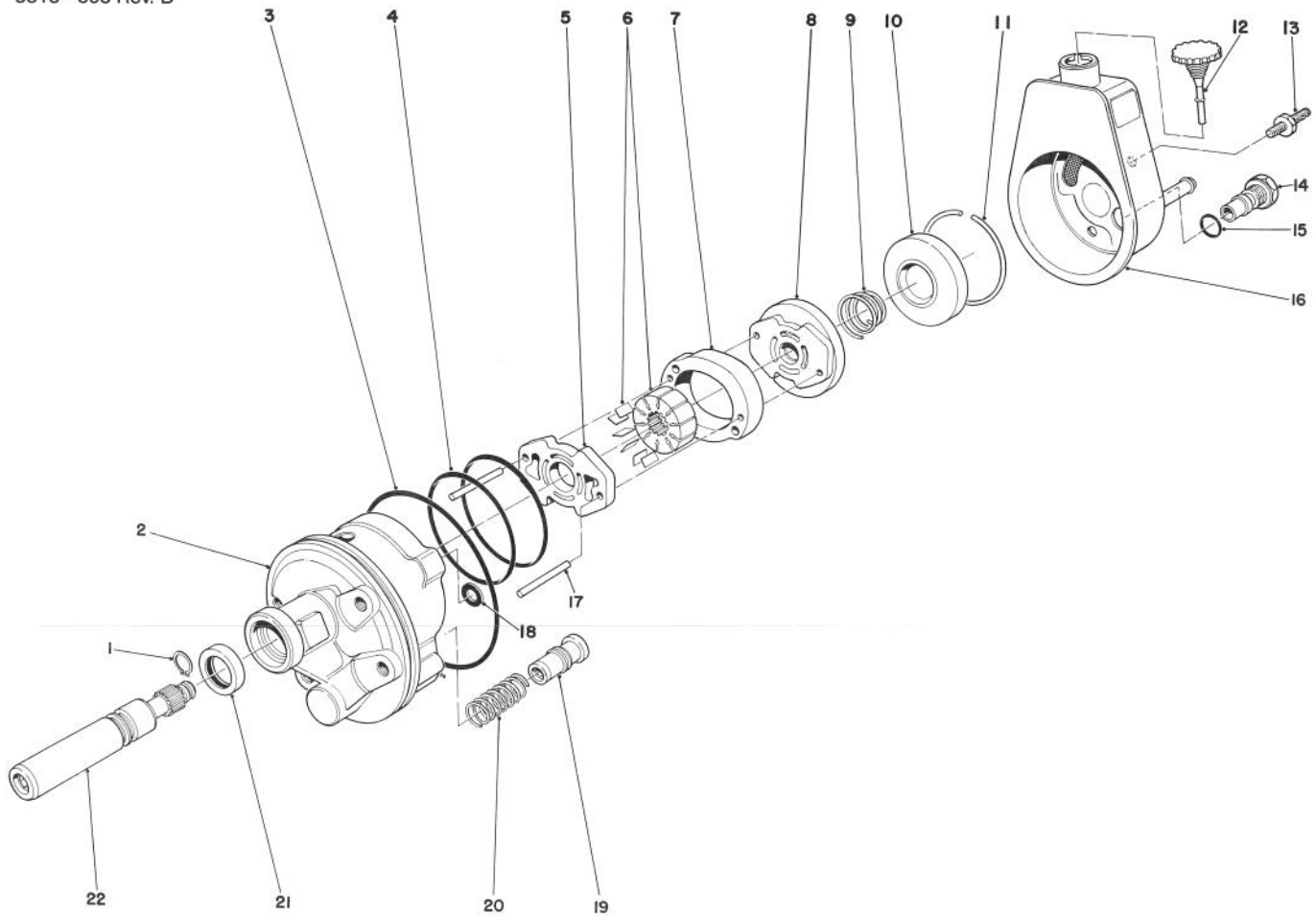
TRANSAXLE ASSEMBLY MODEL NO. 2361A



TRANSAXLE ASSEMBLY MODEL NO. 2361A (Continued)

Ref. No.	Part No.	Description	No. Used	Ref. No.	Part No.	Description	No. Used
2	792016	Ring – Snap	1	41	780052	Washer – Thrust	2
3	792001	Ring – Quad	1	42	788021	Seal & Retainer Assy. – Oil (Incl. Ref. #45)	2
4	792049	Pin – Roll	1	43	778036	Gear – Output	1
5	784344	Housing – Shift Lever	1	44	776028	Pinion – Output	1
†6	66-9080	Keeper – Shift Lever	1	45	788008	Seal – Oil	3
7	784343A	Lever – Shift	1	46	782058	Housing – Axle (10.906" long)	2
8	784054	Rod Assy. – Shift (Incl. Ref. #9-12 & 24)	1	47	772016A	Cover Assy. – Transaxle (Incl. Ref. #54, 55, 57, 59 & 63)	1
9	792003	Spring	2	48	770012	Case Assy. – Transaxle (Incl. Ref. #54, 55, 57 & 63)	1
10	792004	Ball – Steel	2	49	792007	Screw – Flanged Hex Hd.	11
11	784004	Fork – Shifter	2	50	786026	Pin – Dowel	2
12	784055	Rod – Shifter (3rd & 4th)	1	51	792037	Screw – Hex Hd.	8
13	784056	Rod Assy. – Shift (Incl. Ref. #9,10,11,14 & 24)	1	52	792019	Plug – Magnetic Drain	1
14	784057	Rod – Shift (Low)	1	54	780049	Bearing – Needle	2
15	774694	Axle (17-7/8" Long)	2	55	780140	Bearing – Needle	3
16	780042	Washer – Thrust	6	56	780024	Bearing – Ball	1
17	792005	Screw – Hex Hd.	8	57	780047	Bearing – Needle	2
18	792006	Lockwasher	8	58	780050	Bearing – Ball	2
19	778033A	Gear – Ring	1	59	780046	Bearing – Needle	1
20	786019	Pin – Drive	1	60	788025	Seal – Oil	1
21	786027	Block – Drive	2	61	780001	Washer	1
22	778197	Pinion – Bevel	2	62	776031	Shaft & Pinion	1
23	776029A	Shaft & Gear – Brake	1	63	780048	Bearing – Needle	2
24	792017	Ring – Snap	2	64	776030	Shaft – Reverse Idler	1
25	776189A	Pinion Shaft & Bearing (Incl. Ref. #26)	1	65	786025	Spacer – Reverse Idler	1
26	780018	Bearing – Needle	1	66	778051	Idler – Reverse	1
27	778034	Gear Cluster Assembly (Incl. Ref. #28)	1	67	778038	Gear – Spur (22 Teeth)	1
28	780053	Bushing	3	68	780039	Bearing – Thrust	2
29	784074	Stop – Shifter	1	69	774072A	Carrier Assy. – Differential (Incl. Ref. #71)	1
30	788023	Gasket – Case & Cover	1	70	774071A	Carrier Assy. – Differential (Incl. Ref. #71)	1
31	788022	Gasket – Lever Housing	1	71	780041	Bushing	2
32	778217	Gear – Shifting (3rd & 4th)	1	72	788024	O – Ring	2
33	778020	Gear – Shifting (1st, 2nd & Rev.)	1	73	780007	Washer – Thrust	1
34	778231	Gear – Bevel	2	74	780051	Washer – Thrust	1
35	778037	Gear – Idler	1	75	792122	Plug – Pipe	1
36	778218	Gear Cluster Assembly (Incl. Ref. #28)	1	76	780075	Race – Thrust	2
37	786024	Spacer	1	77	780107	Washer	2
38	792018	Ring – Snap	2	†78	3274-26	Screw – Socket Hd.	3
39	776067	Shaft – Input	1				
40	778024A	Spur Gear – Input Shaft	1				

†Obtain from your local Toro dealer.



T-0230

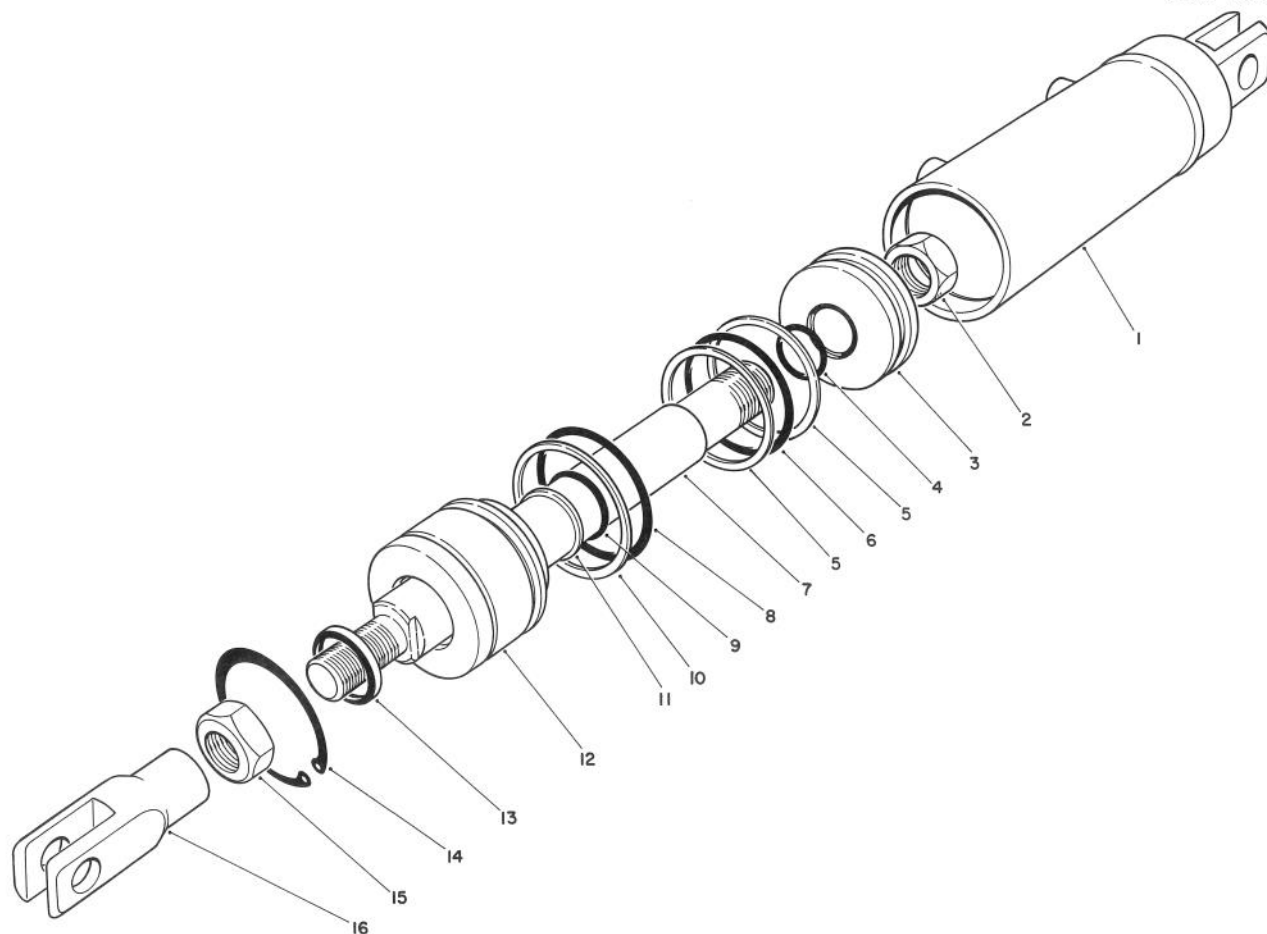
PUMP ASSEMBLY NO. 44-7800

Ref. No.	Part No.	Description	No. Used
1	44-7850	Ring - Shaft Retaining	1
†2		Housing - Hydraulic Pump (Incl. Ref. #21)	1
3	37-8360	Seal - O-Ring	1
4		Seal - O-Ring	2
5	44-7840	Thrust Plate	1
6	44-7810	Ring Service Kit Rotor Vane (Incl. Ref. #1 & 7)	1
7	37-8350	Pump Ring	1
8	44-7830	Pressure Plate	1
9	44-7820	Spring Pressure Plate	1
10	37-8380	End Plate	1
11	37-8440	Ring - Retaining	1
12	37-8420	Assy. - Cap, Reservoir	1
13	39-8700	Stud Pump Mounting	2
14	39-8680	Assembly - Fitting (Incl. Ref. #15)	1

Ref. No.	Part No.	Description	No. Used
15	39-8710	Seal - O-Ring	1
16	37-8400	Pump Reservoir Service Kit (Incl. Ref. #3 & 18)	1
17	37-8300	Pin - Pump, Ring Dowel	2
18		Seal	2
19	37-8410	Assembly - Valve, Control	1
20	37-8450	Spring - Flow Control	1
21	37-8340	Seal - Drive Shaft	1
22	44-2680	Shaft - Service Retaining Ring & Drive Kit (Incl. Ref. #1)	1
*	37-8460	Seal Service Kit (Incl. Ref. #3, 4, 15, 18 & 21)	1
*	44-7860	Retaining Ring Service Kit (Incl. Ref. #1)	1

*Not Illustrated

†Not Serviced Separately



T-0231

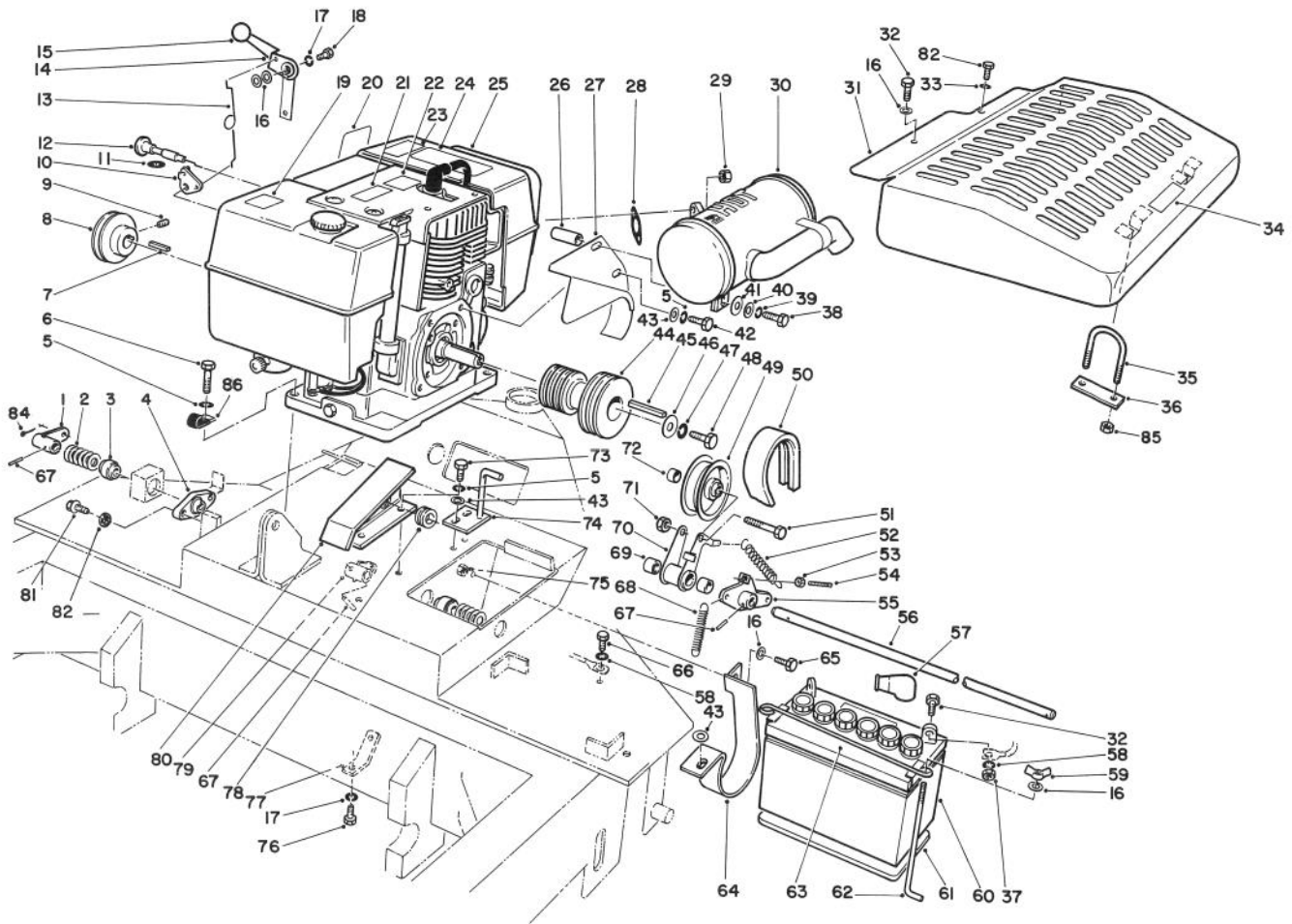
HYDRAULIC CYLINDER ASSEMBLY NO. 62-4660

Ref. No.	Part No.	Description	No. Used
†1		Assembly - Barrel	1
2	60-9760	Nut - Lock	1
3	62-4690	Piston	1
†4		O-Ring	1
†5		Ring - Back-Up	2
†6		O-Ring	1
7	62-4700	Rod	1
†8		O-Ring	1
†9		O-Ring	1
†10		Ring - Back-Up	1

Ref. No.	Part No.	Description	No. Used
†11		Ring - Back-Up	1
12	62-4680	Head	1
†13		Dust Seal	1
14	32120-65	Ring - Retaining	1
15	3220-7	Nut - Jam	1
16	62-4670	Clevis - Rod	1
*	62-4720	Seal Repair Kit (Inc. Ref. #4-6, 8-11, 13 & 14)	1

*Not Illustrated

†Not Serviced Separately

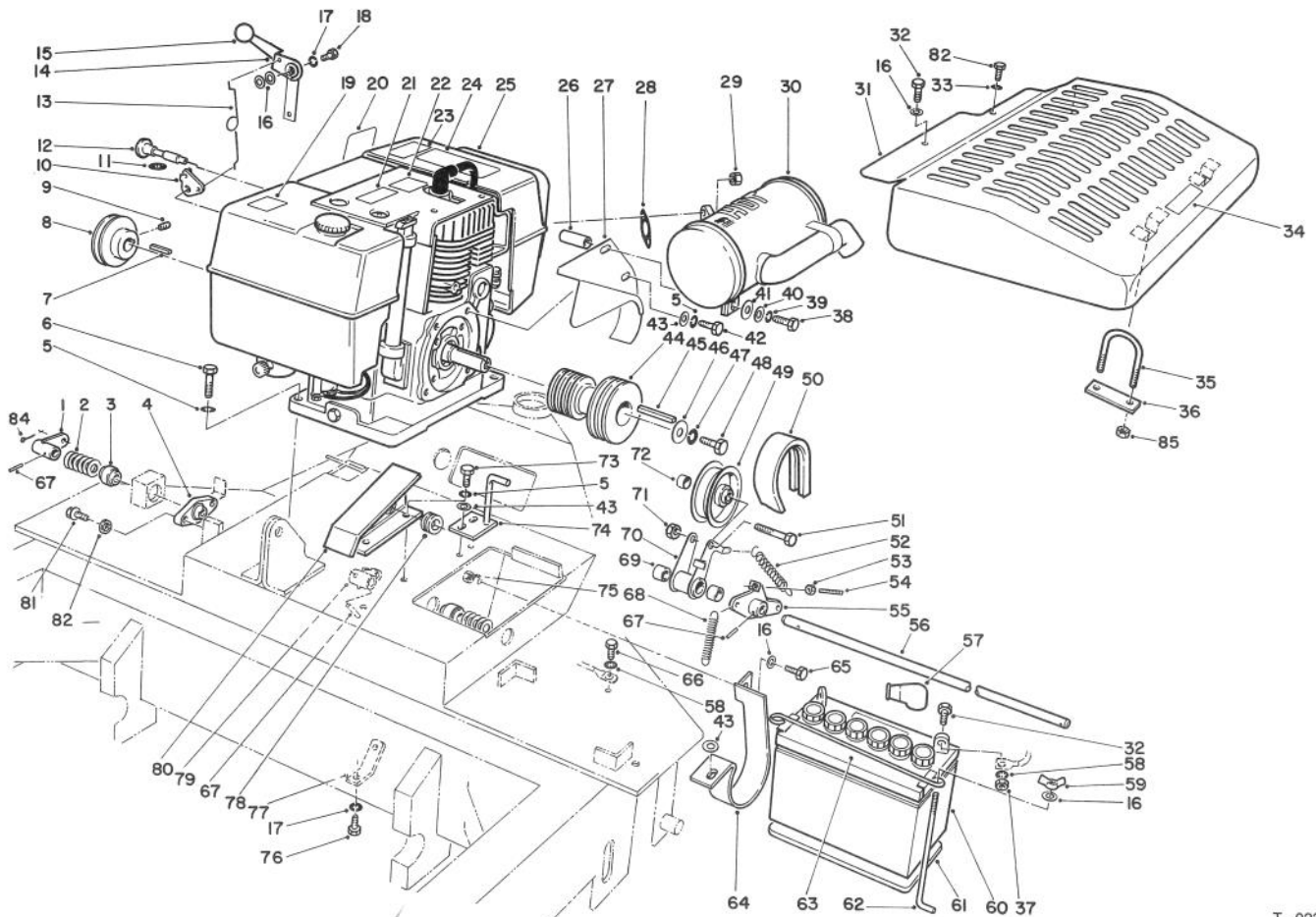


T-0232A

CLUTCH & ENGINE ASSEMBLY

Ref. No.	Part No.	Description	No. Used
1	72-8650	Arm - Cross Shaft	1
2	3256-69	Washer - Flat	11
3	66-4730	Bearing	3
4	66-4520	Housing - Bearing	1
5	3253-21	Washer - Lock	10
6	11-0590	Screw - Cap Hex Hd.	4
7	13-2840	Key	1
8	61-9150	Pulley	1
9	3245-2	Screw - Set	2
10	59-4740	Bell Crank	1
11	3255-5	Washer - Lock, Int. Tooth	1
12	59-4400	Control - Choke	1
13	72-9040	Wire - Linkage	1
14	62-4800	Handle - Throttle (Incl. Ref. #15)	1
15	233-25	Knob	1
16	3256-22	Washer - Flat	6
17	3253-3	Washer - Lock	2
18	321-9	Screw - Cap Hex Hd.	1
19	53-4420	Decal - Gas	1
20	59-9530	Decal - Throttle	1
21	61-9100	Decal - Refueling	1
22	66-9000	Label - Break-In	1
23	66-9110	Decal - Start	1
24	66-9050	Decal - Shift	1

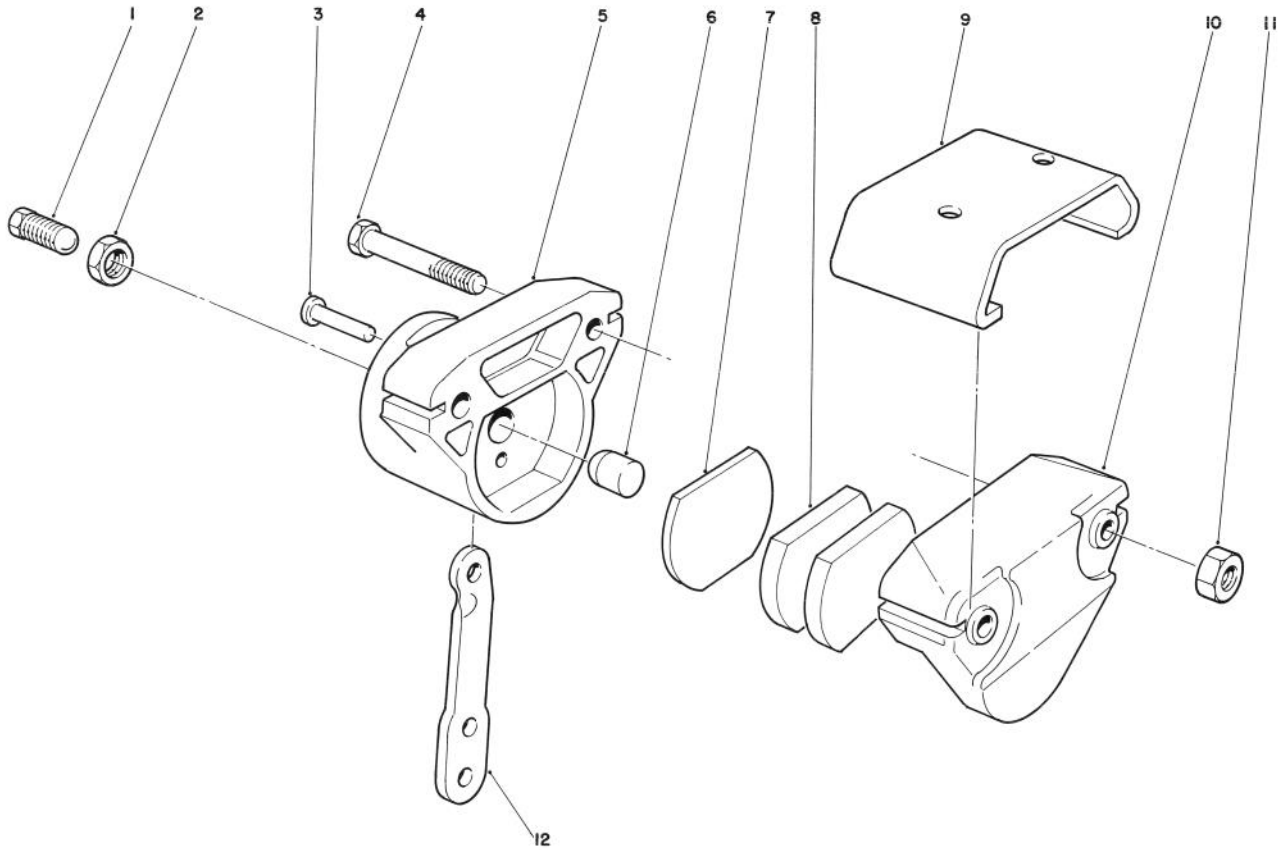
Ref. No.	Part No.	Description	No. Used
25	12-7499	Engine - 16 hp (Kohler Model #M16S-711559)	1
26	36-3920	Spacer	1
27	66-4650	Guide - Belt	1
28	2210-275	Gasket	1
29	32153-3	Nut - Lock	2
30	66-4630	Muffler	1
31	60-9950	Guard - Muffler	1
32	321-3	Screw - Cap Hex Hd.	3
33	3254-1	Washer - Lock	1
34	66-6840	Decal - Hot Surface	1
35	60-9940	Bolt - U	2
36	60-9980	Bar	2
37	3217-5	Nut - Hex	2
38	322-12	Screw - Cap Hex Hd.	1
39	3253-4	Washer - Lock	1
40	3256-23	Washer - Flat	1
41	3256-25	Washer - Flat	1
42	323-5	Screw - Cap Hex Hd.	2
43	3256-24	Washer - Flat	5
44	66-3910	Pulley - Engine	1
45	13-6330	Key	1
46	3256-6	Washer - Flat	1
47	3253-6	Washer - Lock	1
48	3212-8	Screw - Cap Hex Hd.	1



T-0232A

INE ASSEMBLY (Continued)

Ref. No.	Part No.	No. Used	Ref. No.	Part No.	Description	No. Used
49	66-42	1	69	256-216	Bushing	2
50	66-43	1	70	66-3590	Bracket - Drive Take-up (Inc. Ref. #69)	1
51	323-1	1	71	3296-39	Nut - Lock	1
52	5-725	1	72	59-4320	Spacer	1
53	3218-2	1	73	323-4	Screw - Cap Hex Hd.	4
54	3242-9	1	74	66-3560	Guide - Belt	1
55	66-3360	1	75	3296-42	Nut - Lock	1
56	66-3440	1	76	321-2	Screw - Cap Hex Hd.	1
57	218-331	1	77	66-3420	Bracket - Spring Brake	1
58	3254-8	3	78	237-125	Grommet	1
59	32103-12	2	79	76-2610	Arm W.A. - Brake	1
60	28-1400	1	80	66-4400	Guide - Belt	1
61	59-9470	1	81	32144-57	Screw - Hex Hd. Thread Forming	2
62	7-3328	2	82	32144-64	Screw - Hex Hd. Self-Tap	1
63	72-4790	1	83	3256-2	Washer - Flat	6
64	72-8920	1	84	3272-6	Pin - Cotter	1
65	321-5	1	85	32153-4	Nut - Hex. Lock	4
66	32104-17	1	86	2412-41	R-Clamp - Hose	1
67	32121-16	3				
68	66-4180	1				

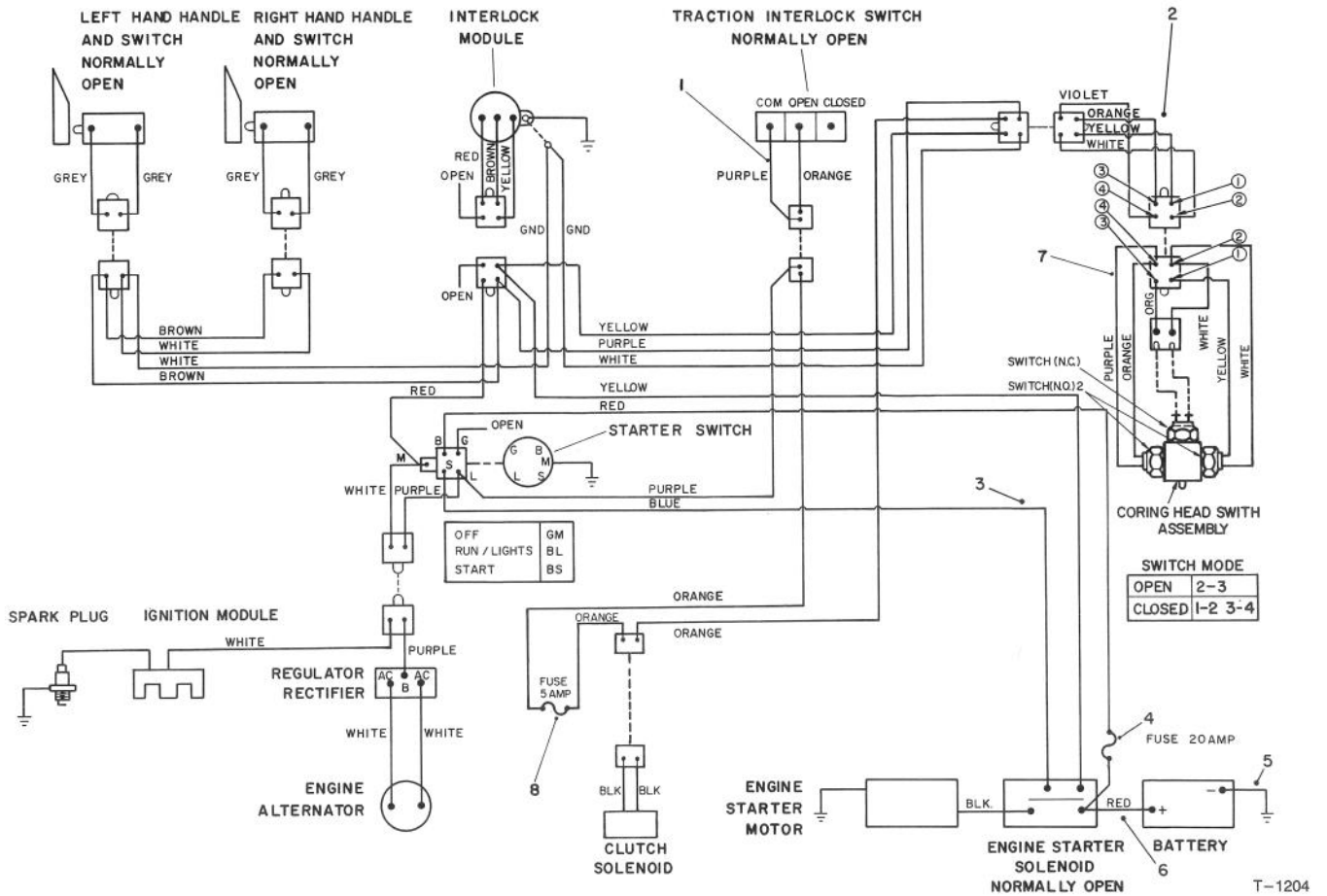


T-1243

BRAKE CALIPER ASSEMBLY NO. 76-2590

Ref. No.	Part No.	Description	No. Used
1	80-0210	Pin - Adjustment	1
2	3220-4	Nut - Jam	1
3	80-0090	Pin - Groove	1
4	3211-10	Screw - Cap Hex. Hd.	2
5	80-0240	Housing - Live Side	1
6	80-0230	Pin - Actuator	1

Ref. No.	Part No.	Description	No. Used
7	80-0260	Plate - Backing	1
8	80-0270	Lining	2
9	80-0190	Bracket - Floating	1
10	80-0280	Sub-Assy. - Anvil	1
11	32153-11	Nut - Lock	2
12	80-0180	Lever - Cam	1



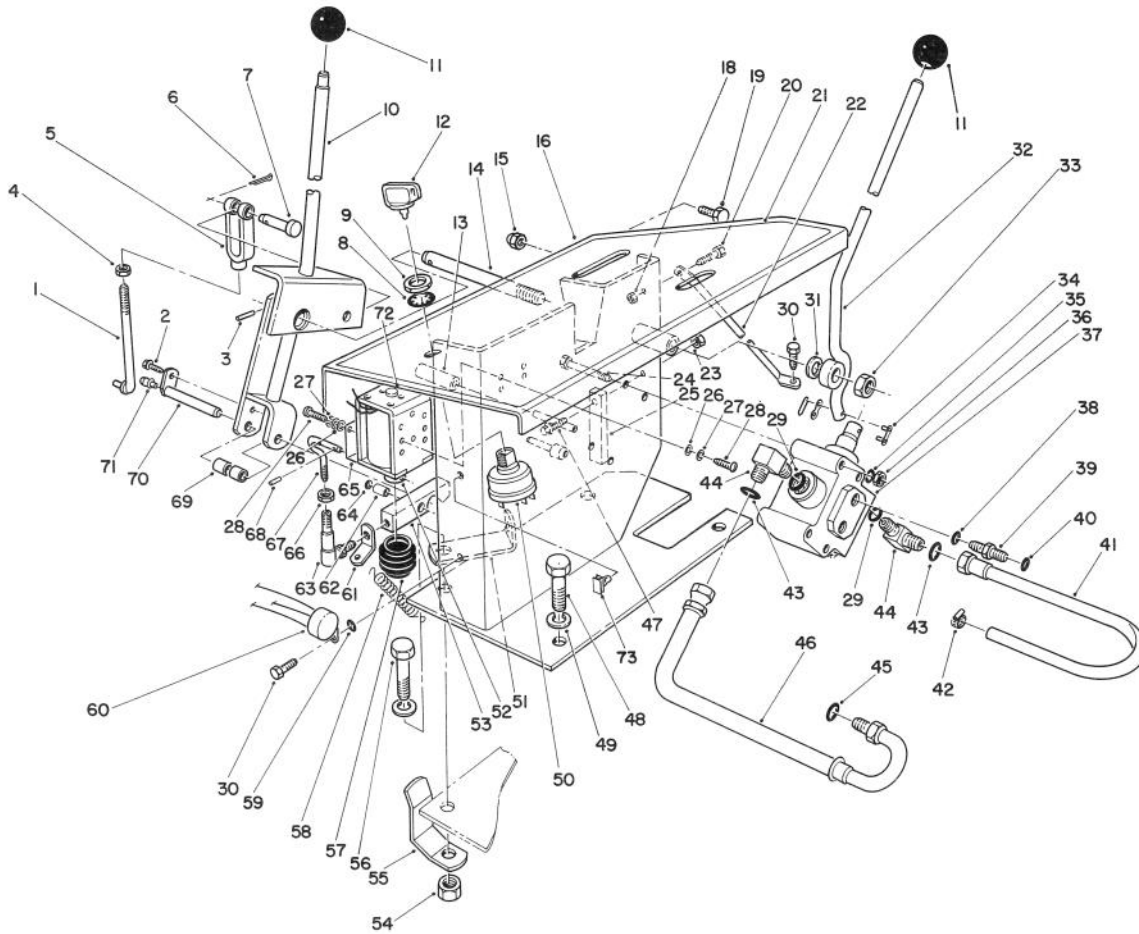
T-1204

ELECTRICAL SCHEMATIC

Ref. No.	Part No.	Description	No. Used
1	66-4660	Wire Harness - Traction	1
2	66-4670	Wire Harness - Head, Coring	1
3	80-3950	Wire Harness - Main	1
†4		Fuse - 20 Amp	1

Ref. No.	Part No.	Description	No. Used
5	28-3860	Battery Cable - Ground	1
6	66-4260	Battery Cable - Positive	1
7	80-3810	Wire Harness - Coring Head Switch	1
8	218-573	Fuse - 5 Amp	1

†Obtain Locally

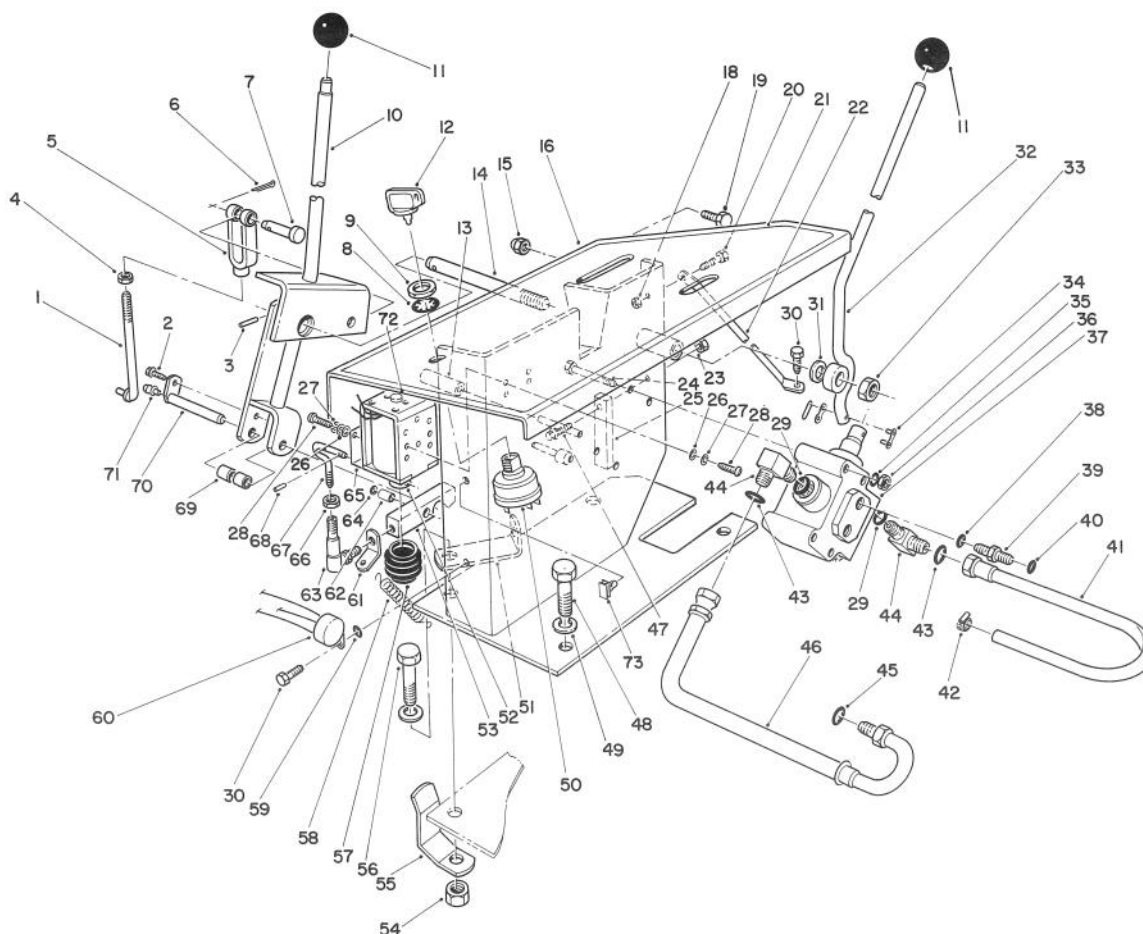


T-0958

CONTROL PANEL ASSEMBLY

Ref. No.	Part No.	Description	No. Used
1	5-1686	Rod - Adjusting	1
2	32144-112	Screw - Backing Plate	1
3	32121-23	Pin - Roll	1
4	3220-3	Nut - Jam	1
5	282-1	Yoke	1
6	3272-6	Pin - Cotter	1
7	283-2	Pin - Clevis	1
8	3254-5	Washer - Lock, Int. Tooth	1
9	218-461	Nut - Hex	1
10	72-8710	Handle & Latch	1
11	233-13	Knob - With Ring	2
12	63-8360	Key	2
13	72-9060	Cushion - Solenoid Stop Latch Pin	1
14	72-8690	Shaft - Traction Clutch	1
15	32111-8	Nut - Lock, Cap	2
16	80-4030	Panel - Control	1
18	32128-33	Nut - Lock	1
19	322-26	Screw - Cap, Hex. Hd.	2
20	321-3	Screw - Cap, Hex. Hd.	1
21	80-3910	Decal - Control	1
22	72-9110	Brace - Control Panel	1
23	3296-12	Nut - Lock	1
24	321-14	Screw - Cap Hex. Hd.	4
25	72-9070	Pad - Bumper	1
26	3256-21	Washer - Flat	8

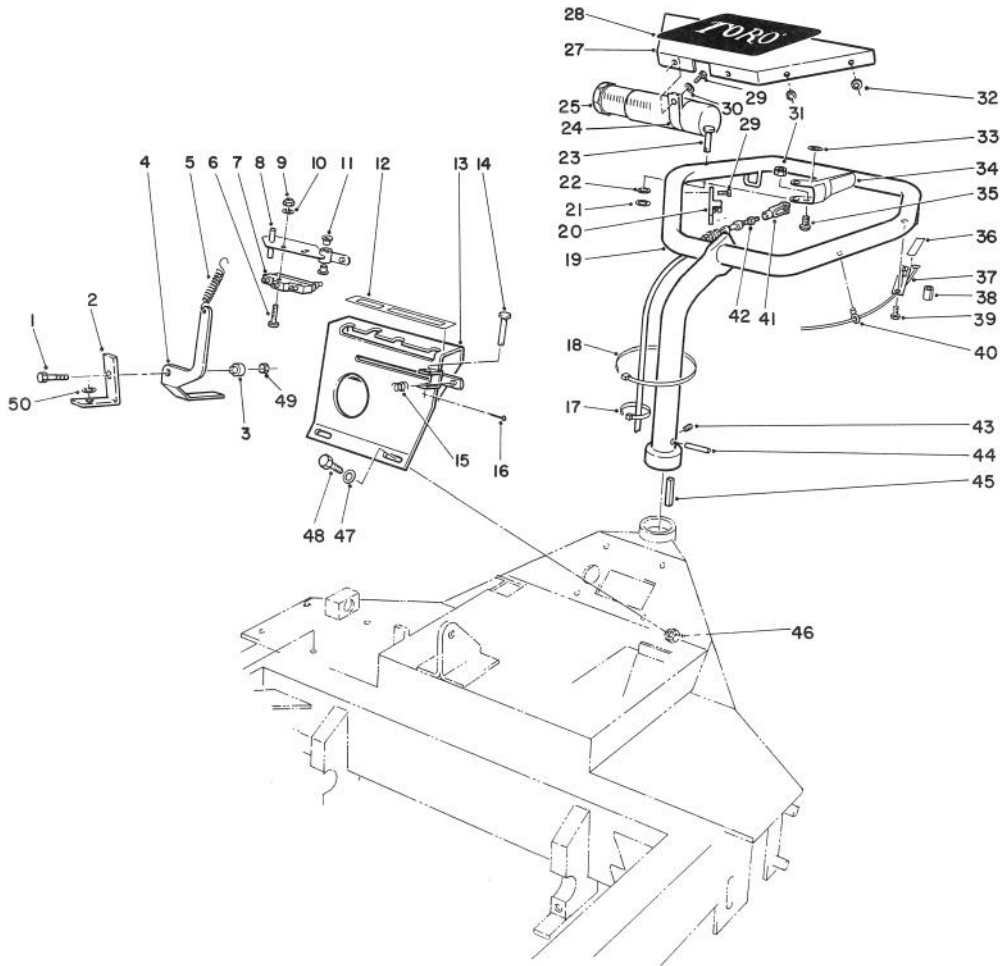
Ref. No.	Part No.	Description	No. Used
27	3253-15	Washer - Lock	6
28	218-462	Screw - Machine	6
29	237-42	Seal - O-Ring	2
30	46-8560	Screw - Hex Hd. Thd. Form	2
31	3256-26	Washer - Flat	1
32	72-8810	Assy. - Handle, Valve	1
33	32153-5	Nut - Lock	1
34	2710-16	Chain - Connecting Link	1
35	3253-3	Washer - Lock	4
36	3217-5	Nut - Hex	4
37	43-1950	Valve - Hydraulic Control	1
38	237-78	O-Ring	2
39	340-92	Fitting - Straight (Incl. Ref. #38 & 40)	2
40	237-21	Seal - O-Ring	2
41	59-4150	Hose - Return	1
42	2412-36	Clamp - Hose	1
43	237-22	O-Ring	2
44	340-77	Fitting - 90° (Inc. Ref. #29 & 43)	2
45	39-7310	O-Ring (Metric)	1
46	59-4140	Hose - Pressure	1
47	3290-126	Screw - Hex Washer Hd.	1
48	11-0590	Screw - Cap, Hex. Hd.	3
49	3253-21	Washer - Lock	4



T-0958

CONTROL PANEL ASSEMBLY (Continued)

Ref. No.	Part No.	Description	No. Used	Ref. No.	Part No.	Description	No. Used
50	23-0660	Switch - Starter (Incl. Ref. #8 & 9)	1	62	256-312	Bushing	1
51	72-9080	Bracket - Spring	1	63	18-1720	Ball Joint	1
52	72-4620	Plunger - Solenoid	1	64	3290-418	Nut - Push On	1
53	72-8780	Latch - Clutch Solenoid	1	65	80-3920	Clamp - Boot Solenoid	1
54	32153-2	Nut - Lock	1	66	3296-13	Nut - Lock	1
55	72-9050	Clip - Control Cover	1	67	72-8790	Rod - Solenoid Adjusting	1
56	323-7	Screw - Cap, Hex. Hd.	1	68	32121-90	Pin - Roll	2
57	67-9510	Seal - Dust	1	69	72-9140	Roller - Latch	2
58	66-4160	Spring	1	70	72-9130	Pin - Roller Latch	1
59	3254-8	Washer - Lock, Int. Tooth	1	71	302-18	Fitting - Grease	1
60	66-4500	Module - Interlock	1	72	80-3960	Solenoid Assembly (Incl. Ref. #52)	1
61	72-9090	Bracket - Spring Latch	1	73	80-3940	Clip - Rosebud	1

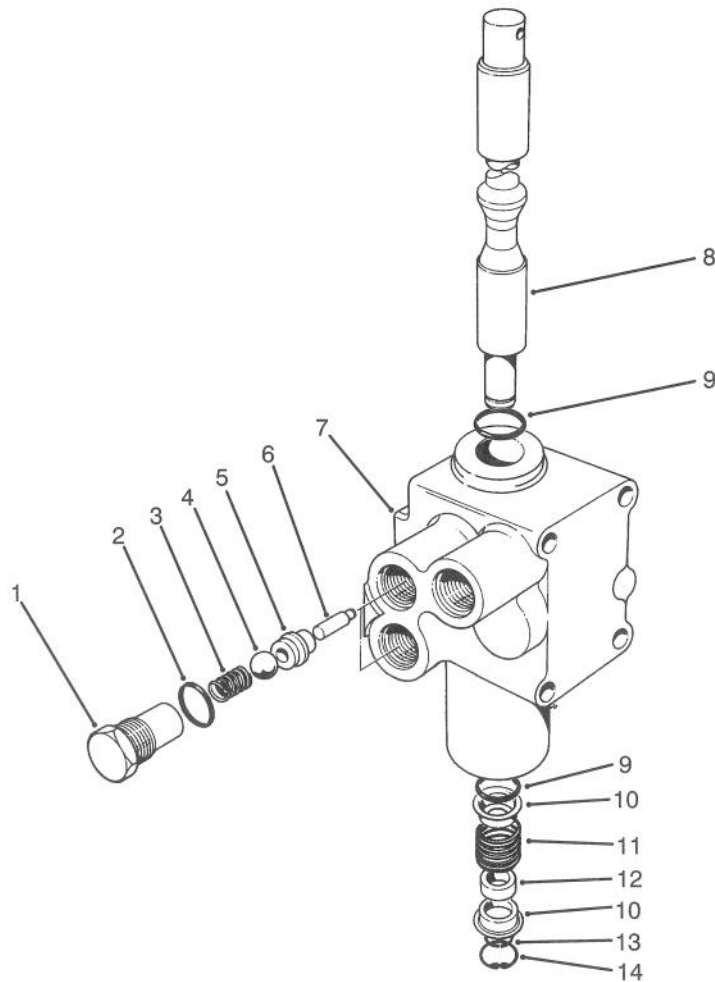


T-0235

HANDLE ASSEMBLY

Ref. No.	Part No.	Description	No. Used
1	329-7	Screw - Cap, Hex. Hd.	1
2	66-9130	Bracket - Throttle	1
3	66-9120	Spacer	1
4	66-3280	Bracket - Throttle Control	1
5	59-3660	Spring - Extension	1
6	32105-17	Screw - Pan Hd. Machine	2
7	29-6162	Switch	1
8	66-4780	Hub & Plate (Incl. Ref. #11)	1
9	3296-9	Nut - Lock	2
10	3256-53	Washer - Flat	2
11	256-301	Bushing	2
12	66-4710	Decal - Shift Pattern	1
13	66-4750	Plate - Shift	1
14	283-66	Pin - Clevis	1
15	66-4850	Spring	1
16	3272-6	Pin - Cotter	1
17	3290-381	Tie - Cable	5
18	3290-379	Tie - Cable	3
19	80-0530	Handle W.A.	1
20	59-9730	Bracket - Cable	1
21	3290-418	Nut - Push On	1
22	3-3287	Spacer - Rubber	1
23	283-11	Pin - Clevis	1
24	2412-133	R-Clamp	2
25	74-0720	Tube	1

Ref. No.	Part No.	Description	No. Used
27	59-4530	Panel - Handle	1
28	67-7320	Decal - Toro	1
29	32144-64	Screw - Hex. Hd. Self Tap	6
30	3256-61	Washer - Flat	2
31	3296-12	Nut - Hex.	1
32	3256-14	Washer - Flat	2
33	59-9860	Decal - Brake	1
34	59-9560	Handle - Control	1
35	3252-3	Screw - Machine	1
36	59-9870	Decal - Interlock	2
37	40-9690	Interlock Handle & Switch (Incl. Ref. #40)	2
38	72-9030	Cushion - Guard	2
39	32104-17	Screw - Hex Hd. Self Tap.	2
40	17-9120	Mount - Wire	6
41	282-26	Clevis	1
42	59-4410	Cable - Brake	1
43	3247-2	Screw - Set	1
44	32121-49	Pin - Roll	1
45	13-2840	Key	1
46	3296-29	Nut - Lock	4
47	3256-23	Washer - Flat	4
48	322-4	Screw - Cap Hex. Hd	4
49	3296-3	Nut - Lock	1
50	3256-24	Washer - Flat	1



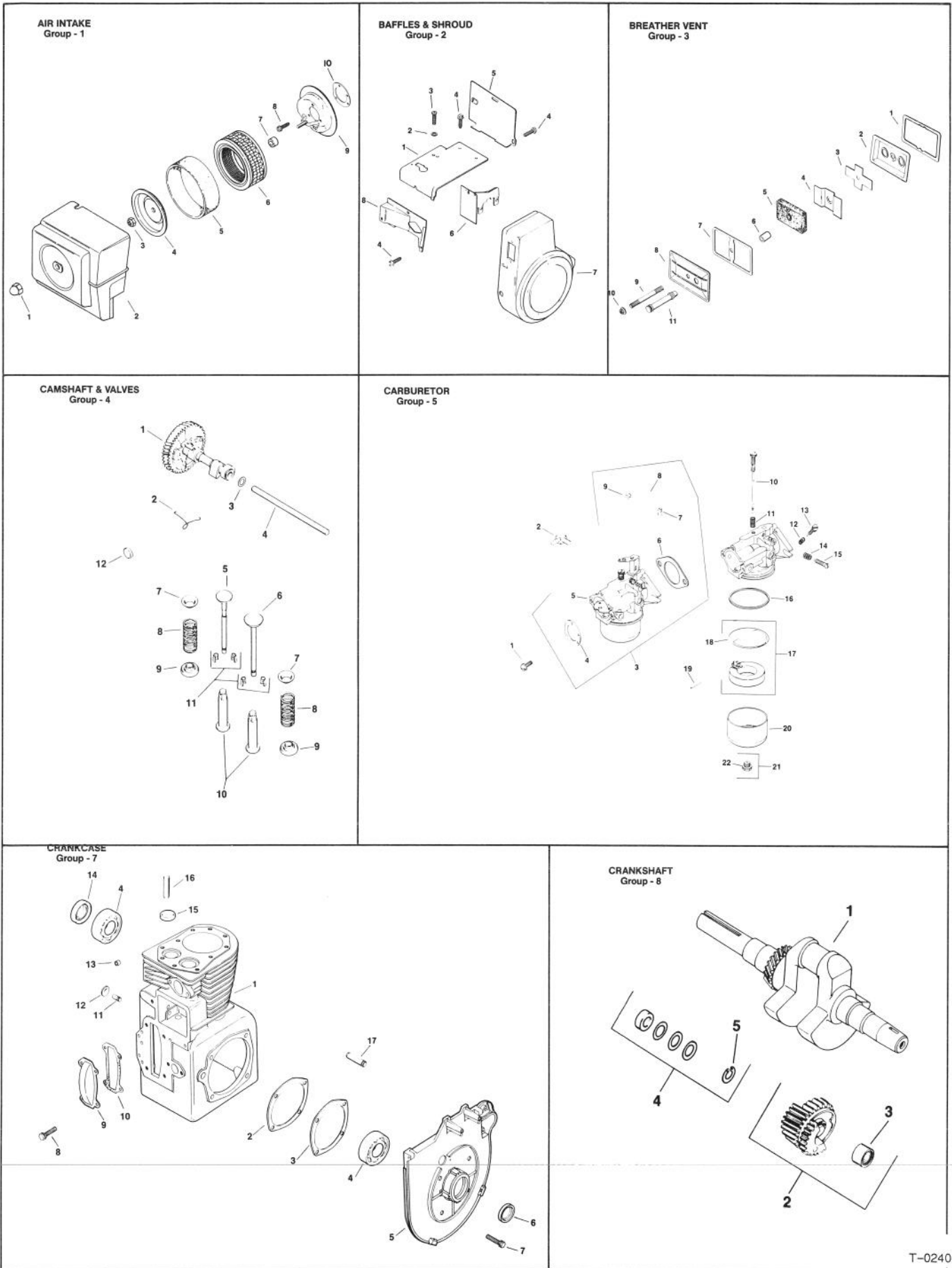
T-0236

CONTROL VALVE NO. 43-1950

Ref. No.	Part No.	Description	No. Used
1	22-8330	Plug	2
2	237-42	O-Ring	2
3	22-8340	Spring	2
4	22-8350	Ball	2
5	22-8370	Seat-Check Valve	2
6	22-8360	Pin - Cam	2
7		Body	1

Ref. No.	Part No.	Description	No. Used
8	22-8420	Spool	1
9	22-8500	O-Ring	2
10	22-8380	Retainer - Spring	2
11	22-8410	Spring	1
12	23-3030	Spacer	1
13	22-8480	Snap Ring Spool	1
14	22-8490	Snap Ring	1

ENGINE KOHLER MODEL NO. M16S SPEC 711559



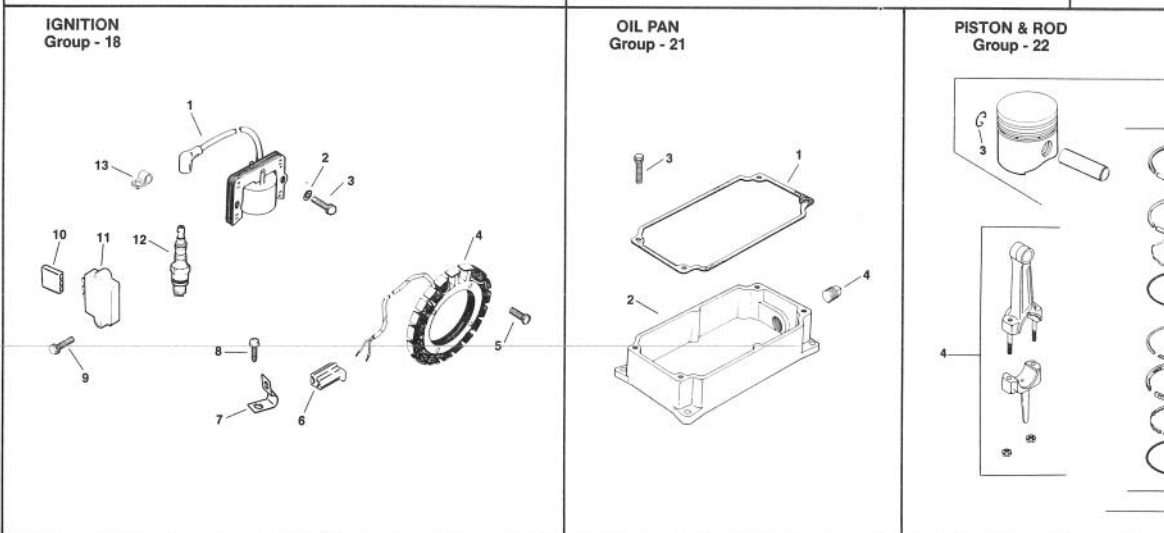
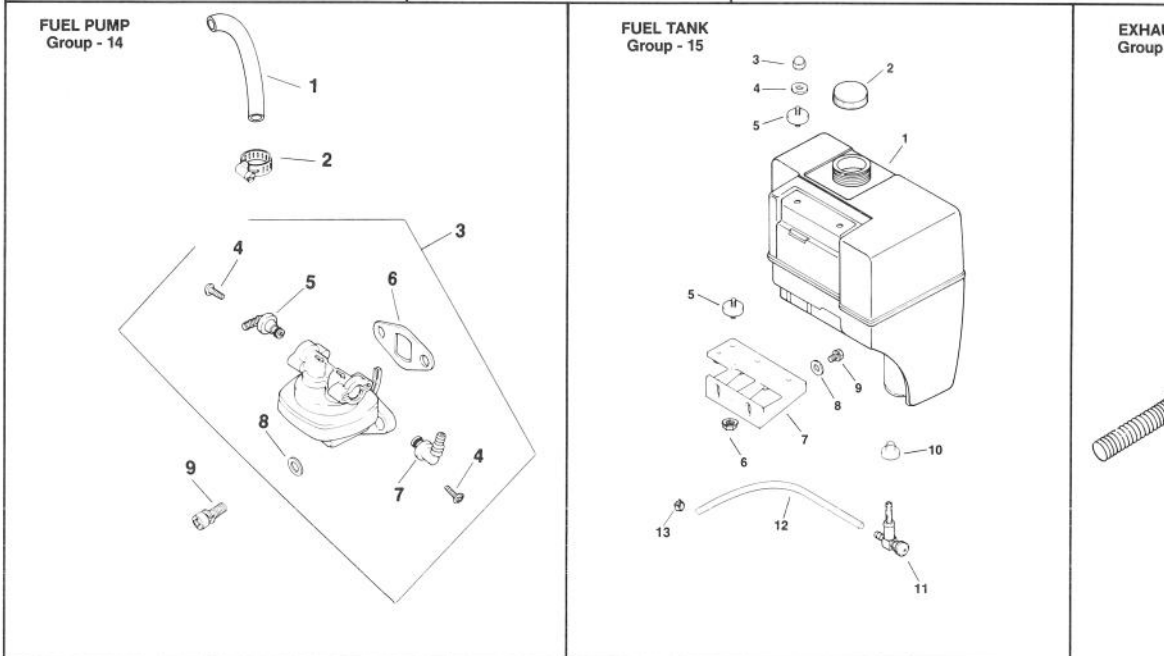
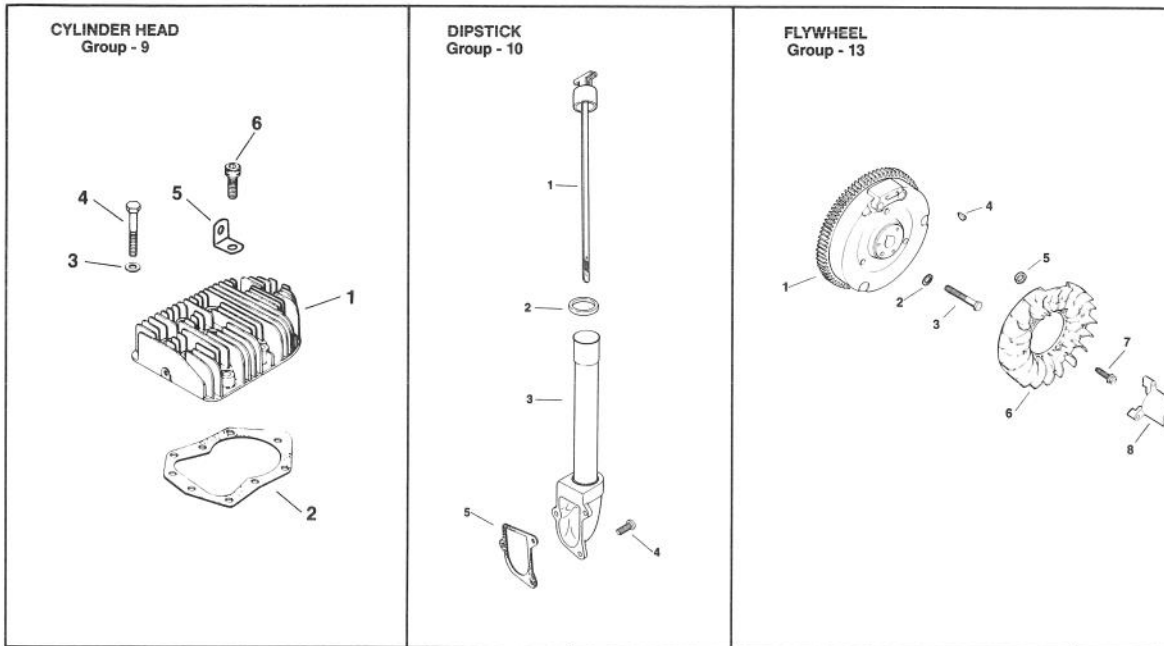
T-0240

ENGINE KOHLER MODEL NO. M16S SPEC 711559

Ref. No.	Part No.	Description	No. Used
		Air Intake Group - 1	
1	4510002	Cap Nut	1
2	4709612	Cover - Air Cleaner	1
3	4110004	Nut - Jam	1
4	5208204	Cover - Inner	1
5	4508301	Precleaner - Element	1
6	4508302	Element	1
7	231032	Seal	1
8	X-67-65	Screw - Hex. Washer Hd.	3
9	4509404	Base - Air Cleaner	1
	4111302	Decal - Air Cleaner	1
10	45041 07	Gasket - Air Cleaner	1
		Baffles & Shroud Group - 2	
1	4506307	Baffle - Head	1
2	X-25-53	Washer - Plain	1
3	4708608	Screw - Pozidriv T.H.	1
4	5208611	Screw - Hex. Washer Hd.	6
5	4706310	Baffle - Cylinder	1
6	4706307	Baffle - Inner	1
7	4702742	Blower Housing	1
8	4706312	Baffle - Side Air	1
		Breather & Vent Group - 3	
1	235048	Gasket - Breather Plate	1
2	235631	Plate - Breather	1
3	235047	Reed	1
4	270146	Baffle - Breather	1
5	4705001	Filter - Breather	1
6	231032	Seal - Breather	1
7	275144	Gasket - Valve Cover	1
8	4709601	Cover - Valve	1
9	275220	Stud	1
10	X-799-1	Palnut	1
11	4732603	Hose - Breather (3-11/32" Lg.)	1
		Camshaft & Valves Group - 4	
1	4701011	Camshaft Assembly	1
2	4708901	Spring - Actuating	1
3	275066	Spacer.005	A/R
3	275067	Spacer.010	A/R
4	4738009	Pin - Camshaft	1
5	237672	Valve - Exhaust	1
6	235582	Valve - Intake	1
7	235011	Retainer - Upper Spring	2
8	235168	Spring - Valve	2
9	5241301	Rotator	2
10	D-235327	Tappet	2
11	41 75510	Kit - Retainer	1
12	X-702-3	Plug - Cup	1

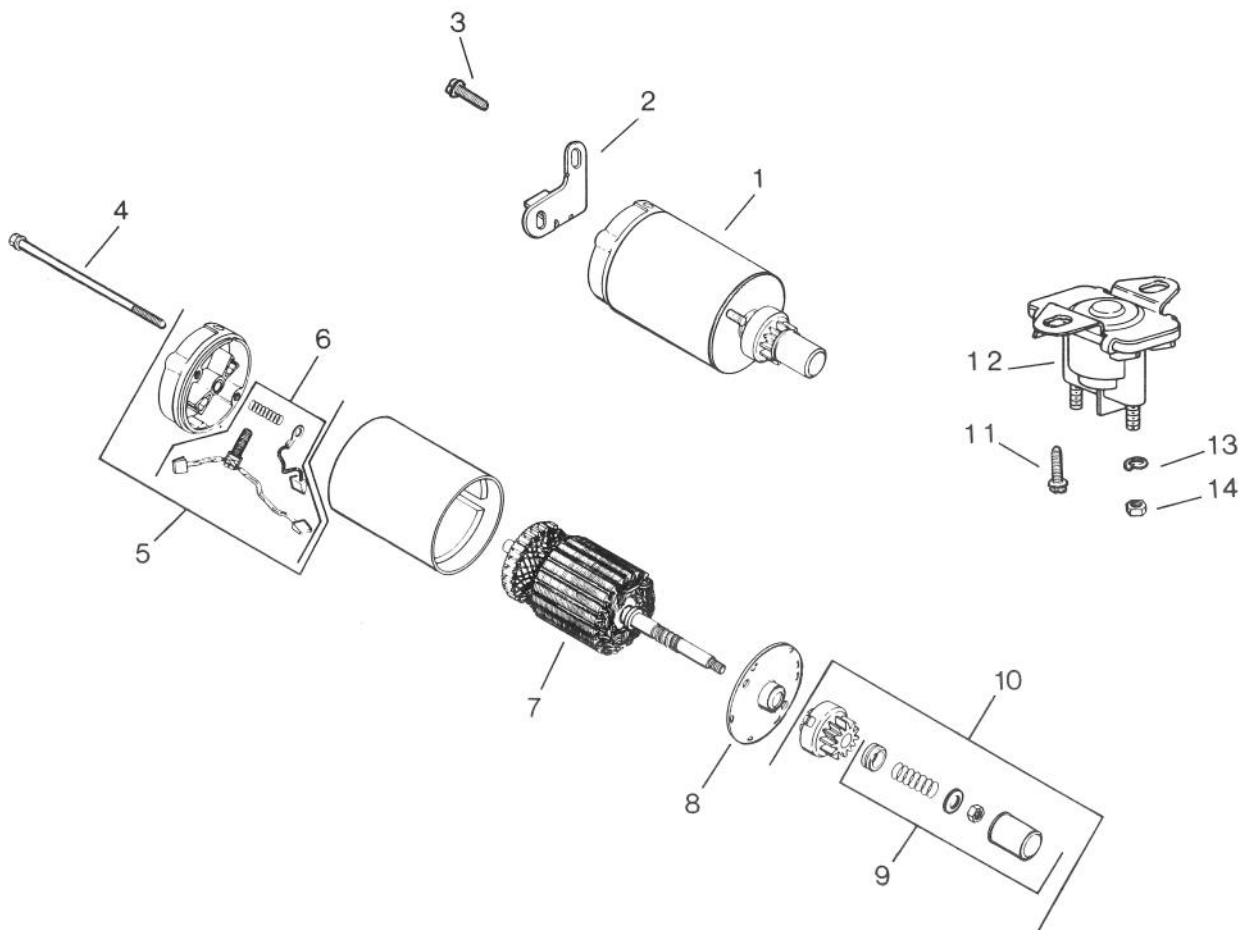
*Not Illustrated

Ref. No.	Part No.	Description	No. Used
		Carburetor Group - 5	
1	X-770-1	Screw - Slotted Hd.	2
2	2515502	Connector - Hose	1
3	4585312	Kit - Carb. w/Linkage	1
4	4504107	Gasket - Air Cleaner	1
5	4505388	Assembly - Carburetor	1
6	4704901	Gasket - Carburetor	1
7	2515809	Bushing - Gov. Linkage	1
8	4707905	Linkage - Carburetor	1
9	4715807	Bushing	1
10	4510301	Needle - Main Fuel Adj.	1
11	200383	Spring - Main Fuel	1
12	200380	Spring - Idle Fuel	1
13	275231	Needle - Idle Fuel Adj.	1
14	232555	Spring - Idle Speed	1
15	232556	Screw - Idle Speed Adj.	1
16	200375	Gasket - Bowl	1
17	2575703	Kit - Float	1
18	2504102	Gasket - Bowl Baffle	1
19	200376	Pin - Float Hinge	1
20	235448	Bowl - Fuel	1
21	4710006	Screw - Bowl Retainer	1
22	200372	Gasket - Bowl Ret. Screw	1
*	2575702	Kit - Carburetor Repair	1
*	2575705	Kit - Choke & Throttle Repair	1
		Crankcase Group - 7	
1	4578223	Block - Cylinder (Incl. Ref. #13, 15 & 16) (USE: Miniblock)	1
2	4742205	Gasket - Shim	A/R
3	47041 09	Gasket - Bearing Plate	1
4	235376	Bearing - Ball	2
5	4714611	Plate - Bearing	1
6	4703206	Seal - Front Oil	1
7	X-159-2	Screw - H.C.	4
8	X-132-6	Screw - H.C.	4
9	235026	Cover - Camshaft	1
10	235025	Gasket - Camshaft Cover	1
11	235125-5	Shaft - Governor Gear	1
12	X-230-11	Plug - Expansion	1
13	234866	Bearing - Cov. X Shaft	1
14	4703207	Seal - Rear Oil	1
15	230265	Insert - Intake Valve	1
16	235007-S	Guide - Valve	2
17	236559	Shaft - Balance Gear	2
		Crankshaft Group - 8	
1	4514221	Kit - Crankshaft	1
2	4504303	Gear Assembly	2
3	4703001	Bearing - Needle	2
4	4775501	Kit - Spacer	1
5	X-269-34	Retainer	2



ENGINE KOHLER

Ref. No.	Part No.	
1	235476	G
2	X-400-80	Bt
3	A-235256-S	Sp
4	A-235743-S	Ki
5	237022	W
6	2546801	W
7	231355	Pi
8	X-799-1	Pa
9	4709020	Le
10	X-776-1	Sc
11	4715807	Bt
12	2515809	Bt
13	4707910	Lit
14	235496	(
15	X-5-26	Sp
16	X-51-8	Sc
17	X-20-1	W
18	X-25-63	W
19	X-25-102	W
20	235086	Br
21	275690	W
22	235085	Sp
23	4875510	Ki
24	X-384-2	Sp



T-0239

ELECTRIC STARTER ENGINE KOHLER MODEL NO. M16S SPEC NO. 711559

Ref. No.	Part No.	Description	No. Used
1	4109804	Starter Assembly (Incl. Ref. #5-11)	1
2	4512617	Brace-Tail	1
3	X-67-62	Screw - Hex Wash. Hd.	2
4	4108619	Bolt - Thru	2
5	41 22704	Cap - Commutator Assy.	1
6	5275515	Kit - Brush	1
7	4517002	Armature	1
8	4122703	Cap-Drive End	1

Ref. No.	Part No.	Description	No. Used
9	4775507	Kit - Drive	1
10	4775513	Kit - Drive Parts	1
11	X-67-83	Screw - Hex Wash. Hd.	2
12	4543507	Solenoid	1
13	X-20-1	Washer - Lock	2
14	X-81-1	Nut-Hex	2
*	2545003	Tag - Caution	1
*	5251803	Lead - Black, Starter to Solenoid	1

*Not Illustrated

TORO PART NUMBER INDEX

Part No.	Description	Pg. Ref. No. No. Qty.	Part No.	Description	Pg. Ref. No. No. Qty.
3-3287	Spacer	9 61 2	43-1950	Valve - Hydraulic Control	20 37 1
3-3287	Spacer - Rubber	22 22 1	44-2680	Shaft - Service Retaining	14 22 1
3-4685	Washer - Thrust	10 40 2	44-7800	Pump - Steering	10 49 1
3-7877	Grip - Handle	5 35 1	44-7810	Ring Service Kit Rotor Vane	14 6 1
5-0786	Key	10 39 2	44-7820	Spring Pressure Plate	14 9 1
5-1254	Washer	1 9 4	44-7830	Pressure Plate	14 8 1
5-1686	Rod - Adjusting	20 1 1	44-7840	Thrust Plate	14 5 1
5-2490	Bolt - Shoulder	9 60 2	44-7850	Ring - Shaft Retaining	14 1 1
5-7290	Spring	17 52 1	44-7860	Retaining Ring Service Kit	14 * 1
7-3328	Bolt - Battery	17 62 2	46-0740	Spring - Compression	25 26 1
10-4850	Spring - Compression	7 5 1	46-8560	Screw - Hex Hd. Thd. Form	20 30 2
10-6830	Stud - Drive	8 42 8	46-8560	Screw - Thread Forming	5 46 2
11-0590	Screw - Thread Forming	10 13 2	46-8560	Screw - Cap Hex. Hd.	8 3 18
11-0590	Screw - Thread Forming.	16 6 4	48-9470	Screw - Cap Hex Hd.	10 14 2
11-0590	Screw - Cap, Hex. Hd.	20 48 3	53-4420	Decal - Gas	16 19 1
12-3819	Assembly - Damper	4 * 1	59-2070	Bar - Keeper	5 49 2
12-7499	Engine - 16 hp	16 25 1	59-2080	Chain - Roller	3 12 2
13-1509	Arm-Tine	3 4 4	59-2090	Chain - Roller	8 40 2
13-2840	Key	16 7 1	59-2130	Pulley	5 24 1
13-2840	Key	22 45 1	59-2140	Pulley	10 36 1
13-6330	Key	16 45 1	59-2150	Bushing	10 37 1
17-9120	Mount-Wire	22 40 6	59-2380	Cap - Dust	8 46 2
18-1720	Ball Joint	21 63 1	59-2390	Sprocket	5 47 2
19-2530	Switch - Start. Safety N.O.	7 1 2	59-2390	Sprocket - Idler	8 33 2
21-0360	Hex Nut (Metric)	10 45 1	59-2420	Bushing	8 31 2
22-6090	Washer - Thrust	8 14 2	59-2430	Nut - Special	9 53 2
22-8330	Plug	23 1 2	59-2500	Block	3 29 8
22-8340	Spring	23 3 2	59-2520	Plate - Wear R.H.	3 34 4
22-8350	Ball	23 4 2	59-2550	Plate - Wear L.H.	3 40 4
22-8360	Pin - Cam	23 6 2	59-2570	Spacer - Short	6 74 1
22-8370	Seat-Check Valve	23 5 2	59-2580	Spacer - Long	6 72 1
22-8380	Retainer - Spring	23 10 2	59-2600	Bushing	5 48 4
22-8410	Spring	23 11 1	59-2610	Shaft	6 55 2
22-8420	Spool	23 8 1	59-2620	Eye Bolt	6 54 4
22-8480	Snap Ring Spool	23 13 1	59-2710	Clip - Retaining	3 6 12
22-8490	Snap Ring	23 14 1	59-2710	Clip - Retaining	5 28 3
22-8500	O-Ring	23 9 2	59-2770	Rod - Pivot	2 4 2
23-0660	Switch - Starter	21 50 1	59-3110	Sprocket	10 38 2
23-3030	Spacer	23 12 1	59-3240	Guard - Chassis R.H.	8 30 1
27-6390	Gasket	10 22 2	59-3270	Guard - Sprocket L.H.	8 * 1
28-1400	Battery - 12 Volt	17 60 1	59-3280	Guard - Sprocket R.H.	8 50 1
28-2480	Washer	8 21 2	59-3410	Head - Bearing	3 23 4
28-3860	Battery Cable - Ground	19 5 1	59-3420	Housing	3 42 4
28-4250	Switch - Neutral N. C.	7 4 1	59-3450	Retainer	3 19 4
29-6162	Switch	22 7 1	59-3470	Cushion	3 44 4
36-3920	Spacer	16 26 1	59-3480	Cushion	3 16 4
37-5760	Pulley - Idler	6 71 1	59-3490	Spring - Compression	2 3 4
37-8300	Pin - Pump, Ring Dowel	14 17 2	59-3510	Bushing - Short	3 27 8
37-8340	Seal - Drive Shaft	14 21 1	59-3520	Bushing - Long	3 25 4
37-8350	Pump Ring	14 7 1	59-3660	Spring - Extension	22 5 1
37-8360	Seal - O-Ring	14 3 1	59-3670	Tine - Coring, 5/8"	3 30 12
37-8380	End Plate	14 10 1	59-3690	Tine - Coring, 3/8"	3 * 12
37-8400	Pump Reservoir Service Kit	14 16 1	59-3790	Bushing Assembly	5 26 1
37-8410	Assembly - Valve, Control	14 19 1	59-4040	Assembly - Hub	8 43 2
37-8420	Assy. - Cap, Reservoir	14 12 1	59-4100	Brake W.A. - Disc	11 58 1
37-8440	Ring - Retaining	14 11 1	59-4140	Hose - Pressure	20 46 1
37-8450	Spring - Flow Control	14 20 1	59-4150	Hose - Return	20 41 1
37-8460	Seal Service Kit	14 * 1	59-4160	Hose - Cylinder	10 4 1
38-1830	Pulley - Steering Pump	10 50 1	59-4200	V-Belt	10 51 1
39-7310	O-Ring (Metric)	20 45 1	59-4210	Key	5 27 1
39-8680	Assembly - Fitting	14 14 1	59-4220	Deflector - Kickout	3 39 4
39-8700	Stud Pump Mounting	14 13 2	59-4260	Tire Scraper - R.H.	24 * 1
39-8710	Seal - O-Ring	14 15 1	59-4270	Tire Scraper - L.H.	24 1 1
40-9690	Interlock Handle & Switch	22 37 2	59-4310	Spacer	10 47 1

*Not Illustrated

TORO PART NUMBER INDEX (Cont.)

Part No.	Description	Pg. No.	Ref. No.	Qty.	Part No.	Description	Pg. No.	Ref. No.	Qty.
59-4320	Spacer	10	16	2	66-3470	Pulley - Idler	5	3	1
59-4320	Spacer	17	72	1	66-3480	Shaft - Idler	5	5	1
59-4350	Decal - Toro	1	1	1	66-3560	Guide - Belt	17	74	1
59-4400	Control - Choke	16	12	1	66-3590	Bracket - Drive Take-up	17	70	1
59-4410	Cable - Brake	22	42	1	66-3790	Sprocket	5	18	2
59-4440	Decal - Greens Aerator	8	4	2	66-3810	Guide W.A. - Belt	6	67	1
59-4530	Panel - Handle	22	27	1	66-3840	Shaft - Power	5	21	1
59-4740	Bell Crank	16	10	1	66-3910	Pulley - Engine	16	44	1
59-4760	Frame Assembly	25	16	1	66-3920	Bracket - Spring	10	28	1
59-4810	Plate - Pivot	25	22	1	66-3930	Clevis	10	5	1
59-4840	Plate - Hook-Up, L.H.	25	15	1	66-4030	Assembly - Crank, Long	3	11	2
59-4850	Plate - Hook-Up, R.H.	25	4	1	66-4040	Assembly - Crank, Short	3	22	2
59-4860	Spacer	25	21	1	66-4060	Pin - Idler	1	10	1
59-9410	Bracket - Lock-Up	25	27	1	66-4070	V-Belt	5	33	1
59-9420	Pin - Lock-Up	25	29	1	66-4110	Cover - Controls	1	3	1
59-9430	Blade - Windrower	25	18	1	66-4120	Cover - Clutch	1	19	1
59-9460	Guide	8	27	2	66-4130	Cover - Coring Head	1	2	1
59-9470	Pad - Battery	17	61	1	66-4150	Spring	11	62	1
59-9530	Decal - Throttle	16	20	1	66-4160	Spring	21	58	1
59-9560	Handle - Control	22	34	1	66-4180	Spring	17	68	1
59-9610	Plate - Backup	1	13	5	66-4210	Pulley - Idler	17	49	1
59-9611	Plate - Backup	1	17	2	66-4260	Battery Cable - Positive	19	6	1
59-9620	Cover - Idler	8	35	2	66-4270	Spring - Extension	5	12	2
59-9630	Spacer	8	39	2	66-4280	Bracket W.A. - Idler R.H.	5	14	1
59-9640	Plate - Handle	6	59	2	66-4320	Bracket W.A. - Idler L.H.	5	8	1
59-9650	Retainer - Bearing	8	22	4	66-4340	V-Belt	17	50	1
59-9730	Bracket - Cable	22	20	1	66-4380	Spacer	5	2	2
59-9740	Assembly - Latch	8	29	3	66-4400	Guide - Belt	17	80	1
59-9750	Assembly - Latch	6	60	2	66-4440	Holder - Idler Pin	1	11	1
59-9770	Tine - Coring, 5/8"	3	*		66-4460	Spring	10	26	1
59-9860	Decal - Brake	22	33	1	66-4480	Actuator - Switch	5	41	1
59-9870	Decal - Interlock	22	36	2	66-4500	Module - Interlock	21	60	1
59-9930	Decal - Danger	1	18	1	66-4520	Housing - Bearing	16	4	1
60-9760	Nut - Lock	15	2	1	66-4530	Bracket - Lockup	9	62	2
60-9840	Deflector - Core	25	1	1	66-4560	Handle	5	36	1
60-9870	Screw - Adjustment	6	64	2	66-4590	Transaxle	10	52	1
60-9920	Screw (Metric)	10	48	1	66-4600	Clevis - Brake	11	71	1
60-9930	Frame Gauge	9	67	1	66-4630	Muffler	16	30	1
60-9940	Bolt - U	16	35	2	66-4650	Guide - Belt	16	27	1
60-9950	Guard - Muffler	16	31	1	66-4660	Wire Harness - Traction	19	1	1
60-9980	Bar	16	36	2	66-4670	Wire Harness - Head,	19	2	
61-9100	Decal - Refueling	16	21	1	66-4680	Spacer	5	30	1
61-9150	Pulley	16	8	1	66-4690	Spacer	5	19	1
61-9160	Stud	3	28	8	66-4710	Decal - Shift Pattern	22	12	1
61-9160	Stud	8	10	2	66-4730	Bearing	16	3	3
61-9780	Cap-Hub	8	19	2	66-4750	Plate - Shift	22	13	1
62-4600	Tine - Coring, 3/4"	3	*	12	66-4780	Hub & Plate	22	8	1
62-4610	Block (For 3/4" Tines)	3	*	8	66-4840	Shield - Heat	1	8	1
62-4660	Assembly - Cylinder	10	20	1	66-4850	Spring	22	15	1
62-4670	Clevis - Rod	15	16	1	66-6840	Decal - Hot Surface	16	34	1
62-4680	Head	15	12	1	66-8910	Guard - Pulley	5	9	1
62-4690	Piston	15	3	1	66-8980	Assy. - Wear Plate, R.H.	3	35	4
62-4700	Rod	15	7	1	66-8990	Assy. - Wear Plate, L.H.	3	36	4
62-4720	Seal Repair Kit	15	*	1	66-9000	Label - Break-In	16	22	1
62-4740	Timing Rod	4	*	4	66-9010	Spring - Compression	3	17	4
62-4800	Handle - Throttle	16	14	1	66-9050	Decal - Shift	16	24	1
63-8360	Key	20	12	2	66-9070	Guard - Chassis L.H.	8	2	1
66-3280	Bracket - Throttle Control	22	4	1	66-9110	Decal - Start	16	23	1
66-3290	Plate - Guide Shift	10	23	1	66-9120	Spacer	22	3	1
66-3360	Arm W.A. - Brake Clutch	17	55	1	66-9130	Bracket - Throttle	22	2	1
66-3390	Retainer - Brake Spring	11	61	1	66-9140	Tine - Coring, 1/2"	3	*	12
66-3400	Rod - Brake Take-up	11	65	1	67-7320	Decal - Toro	22	28	1
66-3420	Bracket - Spring Brake	17	77	1	67-9510	Seal - Dust	21	57	1
66-3440	Cross Shaft - Clutch	17	56	1	68-3110	Tube-Oil	10	31	1

*Not Illustrated

TORO PART NUMBER INDEX (Cont.)

Part No.	Description	Pg. Ref. No. No. Qty.	Part No.	Description	Pg. Ref. No. No. Qty.
70-2170	Chain	25 11 1	80-3950	Wire Harness - Main	19 3 1
70-2180	Support	25 8 1	80-3960	Solenoid Assembly	21 72 1
70-9770	Rod-Ram	3 14 4	80-4020	Bracket - Idler Pulley Pivot	5 53 1
72-4620	Plunger - Solenoid	21 52 1	80-4030	Panel - Control	20 16 1
72-4640	Turf Guard - L.H.	2 11 1	82-8020	Clamp	8 6 2
72-4660	Turf Guard - R.H.	2 9 1	84-8480	Sleeve	6 57 2
72-4680	Turf Guard - Center	2 10 1	92-7941	Tine - Open Center 7/8"	3 * 12
72-4760	O-Ring Seal, Chain	3 15 A/R	93-0177	Shaft	8 48 2
72-4790	Clamp - Battery	17 63 1	93-0307	Nut - Retainer	8 51 2
72-4860	Bracket - Pump Support	11 56 1	93-0309	Washer - Tab	8 45 2
72-8650	Arm - Cross Shaft	16 1 1	217-60	Rim	9 64 2
72-8690	Shaft - Traction Clutch	20 14 1	218-331	Boot-Battery	17 57 1
72-8710	Handle & Latch	20 10 1	218-461	Nut - Hex	20 9 1
72-8780	Latch - Clutch Solenoid	21 53 1	218-462	Screw - Machine	20 28 6
72-8790	Rod - Solenoid Adjusting	21 67 1	218-573	Fuse - 5 Amp	19 8 1
72-8810	Assy. - Handle, Valve	20 32 1	2210-275	Gasket	16 28 1
72-8920	Guide - Traction Belt	17 64 1	231-119	Tire	9 65 2
72-9000	Frame	9 63 1	231-126	Tire	8 15 2
72-9030	Cushion - Guard	22 38 2	232-35	Stem - Valve w/Cap	8 24 4
72-9040	Wire - Linkage	16 13 1	233-13	Knob	10 27 1
72-9050	Clip - Control Cover	21 55 1	233-13	Knob - With Ring	20 11 2
72-9060	Cushion - Solenoid Stop	20 13 1	233-25	Knob	16 15 1
72-9070	Pad - Bumper	20 25 1	237-21	O-Ring	10 2 2
72-9080	Bracket - Spring	21 51 1	237-21	Seal - O-Ring	20 40 2
72-9090	Bracket - Spring Latch	21 61 1	237-22	O-Ring	20 43 2
72-9100	Coring Head W.A.	6 68 1	237-42	O-Ring	11 74 2
72-9110	Brace - Control Panel	20 22 1	237-42	O-Ring	23 2 2
72-9120	Pan - Engine Oil Drain	10 10 1	237-42	Seal - O-Ring	20 29 2
72-9130	Pin - Roller Latch	21 70 1	237-78	O-Ring	20 38 2
72-9140	Roller - Latch	21 69 2	237-125	Grommet	17 78 1
74-0720	Tube	22 25 1	241-123	Rim	8 16 2
76-2300	Hose - Cylinder	10 3 1	242-50	Nut - Lug	8 1 8
76-2370	Guard - Chairn	6 76 2	249-38	Keeper	1 16 2
76-2590	Brake - Caliper	11 63 1	249-40	Keeper	1 14 3
76-2610	Arm W.A. - Brake	17 79 1	2412-36	Clamp - Hose	20 42 1
76-2620	Bracket W.A.	10 8 1	2412-41	R-Clamp	17 86 1
77-5320	Tine - Spiker, 5/16"	3 * 12	2412-68	R-Clamp	6 70 1
77-5340	Tine - Spiker	26 8 28	2412-133	R-Clamp	22 24 2
77-5350	Clamp - Tine	26 4 8	251-297	Bearing	5 4 6
77-5360	Plate - Tine Holder	26 1 4	251-297	Bearing - Ball	8 34 4
77-5370	Tine - Holder	26 5 4	251-312	Bearing	3 5 8
77-5380	Guard - Turf (Spiker)	26 3 4	251-312	Bearing	5 20 1
80-0090	Pin - Groove	18 3 1	251-313	Bearing	5 31 1
80-0180	Lever - Cam	18 12 1	252-105	Bearing - Roller	8 23 4
80-0190	Bracket - Floating	18 9 1	253-158	Seal - Shaft	8 49 2
80-0210	Pin - Adjustment	18 1 1	253-166	Seal	5 38 1
80-0230	Pin - Actuator	18 6 1	254-61	Cup - Bearing	8 7 2
80-0240	Housing - Live Side	18 5 1	254-62	Cone - Bearing	8 9 1
80-0260	Plate - Backing	18 7 1	254-70	Cone - Bearing	8 8 1
80-0270	Lining	18 8 2	254-105	Bearing - Roller	8 44 4
80-0280	Sub-Assy. - Anvil	18 10 1	256-216	Bushing	17 69 2
80-0530	Handle W.A.	22 19 1	256-301	Bushing	22 11 2
80-2710	Assembly - Front Axle	8 13 1	256-312	Bushing	21 62 1
80-2830	Housing Switch	7 3 1	256-319	Bushing - Split	6 56 2
80-2840	Plunger - Switch	7 6 1	2710-16	Chain - Connecting Link	20 34 1
80-3810	Wire Harness - Coring	19 7	2710-16	Link - Connecting	8 41 2
80-3810	Wiring Harness - Coring	6 86 1	2710-20	Link - Single Pitch	9 66 2
80-3820	Bracket - Switch	5 44 1	282-1	Yoke	20 5 1
80-3830	Bolt - Shoulder	3 41 4	282-22	Clevis	2 7 4
80-3890	Arm - Brake	11 64 1	281-1	Plug - Oil	10 30 1
80-3910	Decal - Control	20 21 1	282-26	Clevis	22 41 1
80-3920	Clamp - Boot Solenoid	21 65 1	283-2	Pin - Clevis	2 8 4
80-3930	Guard - Switch	6 85 1	283-2	Pin - Clevis	11 69 1
80-3940	Clip - Rosebud	21 73 1	283-2	Pin - Clevis	20 7 1

*Not Illustrated

TORO PART NUMBER INDEX (Cont.)

Part No.	Description	Pg. No.	Ref. No.	Qty.	Part No.	Description	Pg. No.	Ref. No.	Qty.
283-11	Pin - Clevis	22	23	1	3218-2	Nut - Jam	17	53	1
283-60	Pin - Clevis	25	3	2	3218-3	Nut - Jam	10	17	1
283-66	Pin - Clevis	22	14	1	3218-5	Nut - Jam	6	63	2
283-67	Pin - Clevis	11	70	1	3218-6	Nut - Jam	3	24	4
283-74	Pin - Clevis	10	9	2	3219-1	Nut - Hex.	11	60	3
287-13	Link - Connecting	3	13	2	3219-3	Nut	2	6	4
2811-10	Elbow - Street	10	32	1	3220-1	Nut - Jam	11	59	2
302-5	Fitting - Grease	3	43	4	3220-3	Nut - Jam	20	4	1
302-5	Fitting - Grease	8	17	3	3220-4	Nut - Jam	18	2	1
302-5	Fitting - Grease	25	23	1	3220-7	Nut - Jam	8	18	2
302-10	Grease Fitting	8	47	2	3220-7	Nut - Jam	15	15	1
302-18	Fitting - Grease	21	71	1	3242-9	Screw - Set, Sq. Hd.	17	54	1
302-22	Fitting - Grease	7	2	1	3243-9	Screw - Set, Sq. Hd.	11	55	1
321-2	Screw - Cap Hex Hd.	17	76	1	3245-2	Screw - Set	5	25	1
321-3	Screw - Cap, Hex. Hd.	20	20	1	3245-2	Screw - Set	16	9	2
321-3	Screw - Cap Hex Hd.	16	32	3	3245-33	Screw - Set	11	57	2
321-4	Screw - Cap, Hex. Hd.	10	12	2	3247-2	Screw - Set	10	42	4
321-5	Screw - Cap Hex Hd.	11	75	2	3247-2	Screw - Set	22	43	1
321-5	Screw - Cap Hex Hd.	17	65	1	3252-3	Screw - Machine	22	35	1
321-6	Screw - Cap, Hex Hd.	8	25	2	3253-3	Washer - Lock	10	35	3
321-9	Screw - Cap Hex Hd.	16	18	1	3253-3	Washer - Lock	16	17	2
321-13	Screw - Cap, Hex. Hd.	10	34	3	3253-3	Washer - Lock	20	35	4
321-14	Screw - Cap Hex Hd.	20	24	4	3253-4	Washer - Lock	5	34	3
321-33	Screw - Cap, Hex. Hd.	6	78	2	3253-4	Washer - Lock	16	39	1
321-43	Screw - Cap, Hex. Hd.	5	11	2	3253-5	Washer - Lock	25	12	4
322-2	Screw - Cap Hex Hd.	1	4	1	3253-6	Washer - Lock	10	15	3
322-3	Screw - Cap, Hex Hd.	25	10	2	3253-6	Washer - Lock	16	47	1
322-4	Screw - Cap Hex Hd.	22	48	4	3253-7	Washer - Lock	3	31	8
322-5	Screw - Cap, Hex Hd.	25	7	1	3253-7	Washer - Lock	8	38	2
322-5	Screw - Cap, Hex. Hd.	10	43	4	3253-7	Washer - Lock	26	2	16
322-6	Screw - Cap, Hex Hd.	25	6	2	3253-12	Washer - Lock	6	80	2
322-7	Screw - Cap, Hex. Hd.	5	32	3	3253-15	Washer - Lock	20	27	6
322-12	Screw - Cap Hex Hd.	16	38	1	3253-21	Washer - Lock	3	7	52
322-26	Screw - Cap, Hex. Hd.	20	19	2	3253-21	Washer - Lock	5	7	9
323-4	Screw - Cap Hex Hd.	17	73	4	3253-21	Washer - Lock	10	7	8
323-4	Screw - Cap Hex Hd.	26	6	16	3253-21	Washer - Lock	16	5	10
323-4	Screw - Cap, Hex. Hd.	6	66	2	3253-21	Washer - Lock	20	49	4
323-5	Screw - Cap Hex Hd.	16	42	2	3253-21	Washer - Lock	26	7	16
323-5	Screw - Cap, Hex. Hd.	10	41	2	3254-1	Washer - Lock	16	33	1
323-6	Screw - Cap Hex Hd.	3	37	8	3254-5	Washer - Lock, Int. Tooth	20	8	1
323-6	Screw - Cap, Hex. Hd.	5	6	2	3254-8	Washer - Lock, Int. Tooth	21	59	1
323-6	Screw - Cap, Hex. Hd.	10	6	3	3254-8	Washer - Lock, Int. Tooth	17	58	3
323-6	Screw - Cap, Hex. Hd.	25	13	4	3255-5	Washer - Lock, Int. Tooth	16	11	1
323-7	Screw - Cap Hex Hd.	6	87	1	3256-2	Washer - Flat	17	83	6
323-7	Screw - Cap, Hex. Hd.	21	56	1	3256-4	Washer - Flat	2	2	8
323-10	Screw - Cap, Hex. Hd.	11	54	4	3256-6	Washer - Flat	16	46	1
323-11	Screw - Cap Hex Hd.	3	38	8	3256-14	Washer - Flat	22	32	2
323-12	Screw - Cap Hex Hd.	17	51	1	3256-21	Washer - Flat	20	26	8
323-13	Screw - Cap Hex Hd.	24	3	4	3256-22	Washer - Flat	8	26	2
323-20	Screw - Cap, Hex. Hd.	5	52	2	3256-22	Washer - Flat	16	16	6
323-25	Screw - Cap, Hex. Hd.	5	40	1	3256-23	Washer - Flat	16	40	1
325-7	Screw - Cap, Hex Hd.	25	17	1	3256-23	Washer - Flat	22	47	4
325-13	Screw - Cap Hex Hd.	8	37	2	3256-23	Washer - Flat	25	28	3
329-7	Screw - Cap, Hex. Hd.	22	1	1	3256-24	Washer - Flat	5	39	4
3211-10	Screw - Cap Hex Hd.	18	4	2	3256-24	Washer - Flat	16	43	5
3211-12	Screw - Cap Hex Hd.	2	1	4	3256-24	Washer - Flat	22	50	1
3212-8	Screw - Cap Hex Hd.	16	48	1	3256-25	Washer - Flat	10	46	1
3217-5	Nut - Hex	16	37	2	3256-25	Washer - Flat	16	41	1
3217-5	Nut - Hex	20	36	4	3256-26	Washer - Flat	2	12	6
3217-7	Nut	10	53	4	3256-26	Washer - Flat	5	51	4
3217-9	Nut - Hex	3	32	8	3256-26	Washer - Flat	8	36	2
3217-26	Nut - Jam	5	43	1	3256-26	Washer - Flat	20	31	1
3218-1	Nut - Jam	5	10	2	3256-26	Washer - Flat	25	20	1
3218-2	Nut - Jam	1	5	1	3256-44	Washer - Flat	3	2	8

*Not Illustrated

TORO PART NUMBER INDEX (Cont.)

Part No.	Description	Pg. Ref.		Part No.	Description	Pg. Ref.	
		No.	Qty.			No.	Qty.
3256-44	Washer - Flat	5	17 2	3296-39	Nut - Lock	17	71 1
3256-53	Washer - Flat	22	10 2	3296-42	Nut - Lock	6	77 2
3256-61	Washer - Flat	22	30 2	3296-42	Nut - Lock	9	54 2
3256-69	Washer - Flat	16	2 11	3296-42	Nut - Lock	10	11 3
3257-5	Key	10	33 2	3296-42	Nut - Lock	17	75 1
3269-3	Rivet - Pop	3	33 24	3296-44	Nut - Lock	3	26 4
3269-4	Rivet - Pop	1	15 4	3296-45	Nut - Lock	8	5 2
3269-4	Rivet - Pop	6	62 4	3296-59	Nut - Lock	6	65 2
3269-8	Rivet - Pop	1	7 10	3296-67	Nut - Hex	3	1 8
3269-17	Rivet - Pop	1	20 4	3296-67	Nut - Lock	5	16 2
3272-4	Pin - Cotter	11	68 1	3296-68	Nut - Lock	8	11 1
3272-4	Pin - Cotter	11	72 1	32103-12	Nut - Wing	17	59 2
3272-6	Pin - Cotter	2	5 8	32104-17	Screw - Hex Hd. Self Tap.	22	39 2
3272-6	Pin - Cotter	17	84 1	32104-17	Screw - Hex Hd. Self - Tap	17	66 1
3272-6	Pin - Cotter	20	6 1	32105-8	Screw - Washer Head	6	81 2
3272-6	Pin - Cotter	22	16 1	32105-17	Screw - Pan Hd. Machine	22	6 2
3272-11	Pin - Cotter	25	25 1	32111-8	Cap & Locknut	1	6 1
3272-12	Pin - Cotter	10	18 2	32111-8	Nut - Lock, Cap	20	15 2
3272-13	Pin - Cotter	8	20 4	32120-11	Ring - Retaining	5	1 6
3272-30	Pin - Cotter	25	24 1	32120-11	Ring - Retaining	8	32 4
3274-7	Screw - Cap, Socket Hd.	5	29 3	32120-22	Ring - Retaining	3	3 16
3274-7	Screw - Hex Socket Hd.	3	10 12	32120-65	Ring - Retaining	15	14 1
3274-26	Screw - Socket Hd.	10	25 3	32121-16	Pin - Roll	17	67 3
3274-50	Screw - Cap, Socket Hd.	5	23 4	32121-20	Pin - Roll	10	21 1
3274-50	Screw - Hex Socket Hd.	3	8 24	32121-23	Pin - Roll	20	3 1
3289-4	Screw - Flat Hd. Hex. Soc.	6	79 2	32121-49	Pin - Roll	22	44 1
3290-126	Screw - Hex Washer Hd.	20	47 1	32121-90	Pin - Roll	21	68 2
3290-224	Washer - Lock, Pyramidal	6	73 2	32128-19	Nut - Flange	24	2 4
3290-224	Washer - Pyramidal	4	45 4	32128-19	Nut - Lock, Flange Hd.	6	69 3
3290-224	Washer - Pyramidal	10	29 1	32128-25	Nut - Lock, Flange	25	5 5
3290-238	Washer - Pyramidal	10	44 4	32128-27	Nut - Lock, Flange	25	19 1
3290-250	Pin - Hair	25	9 1	32128-33	Nut - Flange	6	82 2
3290-271	Rivet - Pop	9	55 2	32128-33	Nut - Lock	20	18 1
3290-355	Pin - Hair	25	14 2	32136-5	Nut - Hex. Slotted	9	68 2
3290-355	Pin - Hair, Cotter	1	12 1	32140-29	Screw - Washer Hd.	6	61 4
3290-359	Screw - Machine, Hex. Hd.	5	13 2	32144-4	Screw - Self Tap Hex Hd.	25	2 4
3290-360	Screw - Hex. Head	5	42 1	32144-57	Screw - Hex Hd. Thread	17	81 2
3290-378	Tie - Cable	6	84 1	32144-64	Screw - Hex Hd. Self - Tap	17	82 1
3290-379	Tie - Cable	10	19 1	32144-64	Screw - Hex. Hd. Self Tap	22	29 6
3290-379	Tie - Cable	22	18 3	32144-73	Screw - Hex. Washer Head	6	83 1
3290-381	Tie - Cable	22	17 5	32144-112	Screw - Backing Plate	20	2
3290-418	Nut - Push On	21	64 1	32151-54	Ring - Retaining	7	7 1
3290-418	Nut - Push On	22	21 1	32151-75	Ring - Retaining	3	20 4
3296-3	Nut - Lock	22	49 1	32151-77	Ring - Retaining	6	58 2
3296-8	Rivet - Pop	8	28 4	32153-2	Nut - Lock	5	15 2
3296-9	Nut - Lock	22	9 2	32153-2	Nut - Lock	21	54 1
3296-12	Nut - Hex.	22	31 1	32153-3	Nut - Lock	16	29 2
3296-12	Nut - Lock	5	45 2	32153-4	Nut - Hex. Lock	17	85 4
3296-12	Nut - Lock	20	23 1	32153-5	Nut - Lock	20	33 1
3296-13	Nut - Lock	21	66 1	32153-11	Nut - Lock	18	11 2
3296-15	Nut - Lock	9	52 2	340-77	Fitting - 90°	20	44 2
3296-22	Washer - Flat	11	73 3	340-82	Fitting	10	1 2
3296-23	Nut - Lock	5	50 8	340-92	Fitting - Straight	20	39 2
3296-29	Nut - Lock	22	46 4				

PRODUCT CHANGES

In an effort to make improvements available to TORO owners as quickly as possible, minor changes are incorporated into Toro's products from time to time that do not become immediately shown in the Parts Catalog. If such a change has been made in your unit, which is not reflected in your manual, see your TORO Distributor or his Authorized TORO Service Dealer for information and part numbers.

IDENTIFICATION AND ORDERING

MODEL AND SERIAL NUMBERS

The Greens Aerator traction unit and coring head each have two identification numbers: a model number and a serial number. The two numbers are stamped on a plate which is riveted to each frame member. In any correspondence concerning the Greens Aerator, supply model and serial numbers to assure that correct information and replacement parts are obtained.

To order replacement parts from an Authorized TORO Service Dealer, supply the following information:

1. Model and serial number of the machine.
2. Part number, description, and the quantity of part(s) desired.

NOTE: Do not order by reference number if a parts catalog is being used; use the PART NUMBER.

COUNTRIES OTHER THAN THE UNITED STATES OR CANADA

Customers who have purchased TORO products exported from the United States or Canada should contact their Toro Distributor (Dealer) to obtain guarantee policies for your country, province or state. If for any reason you are dissatisfied

with your Distributor's service or have difficulty obtaining guarantee information, contact the TORO importer. If all other remedies fail, you may contact us at The Toro Company.

TABLE OF CONTENTS

Description	Page	Description	Page
Cover Assembly	1	Brake Caliper Assembly No. 76-2590	18
Turf Guard Assembly	2	Electrical Schematic	19
Tine Arm & Crank Assembly	3-4	Control Panel Assembly	20-21
Coring Head Drive Assembly	5-6	Handle Assembly	22
Switch Assembly - Coring Head	7	Control Valve No. 43-1950	23
Chassis Assembly	8-9	Engine Kohler Model No. M16S	
Transaxle, Brake & Pump Assembly	10-11	Spec 711559	24-28
Transaxle Assembly Model No. 2361A	12-13	Electric Starter Engine Kohler Model No. M16S	
Pump Assembly No. 44-7800	14	Spec 711559	29
Hydraulic Cylinder Assembly No. 62-4660	15	TORO Part Number Index	30-34
Clutch & Engine Assembly	16-17		

