

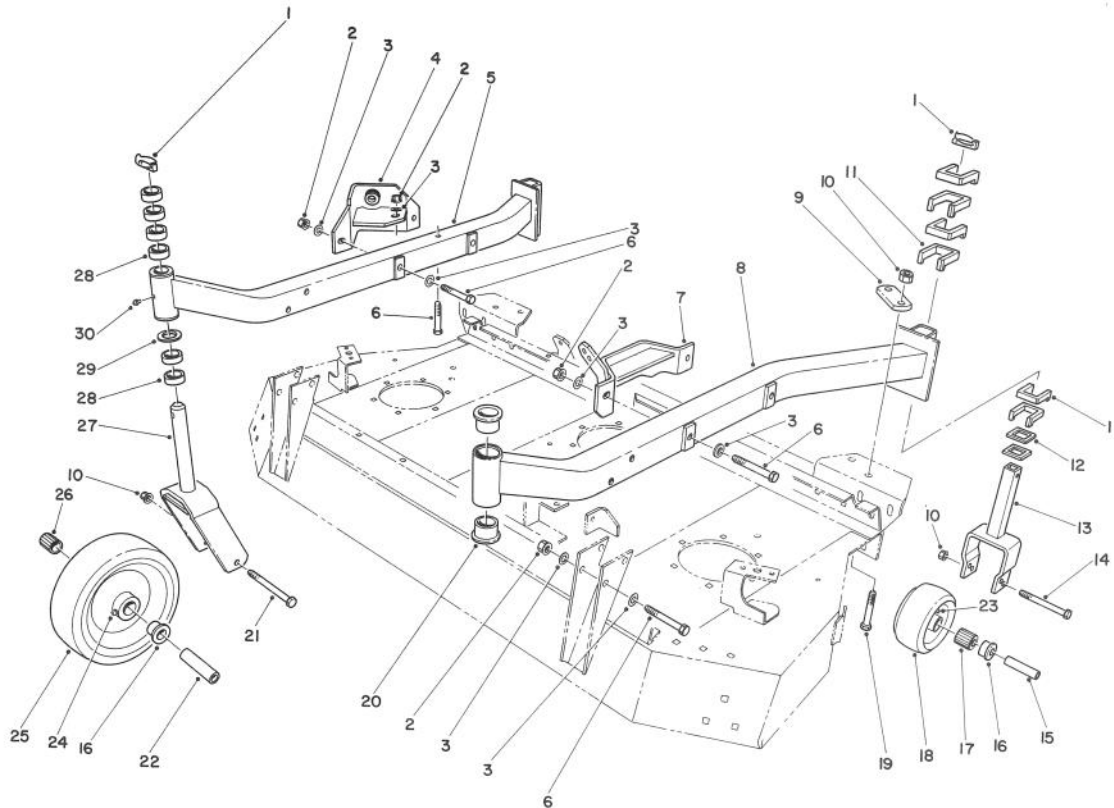


MODEL NO. 30715-30001 & UP

PARTS
CATALOG

TRIFLEX 88" CUTTING UNIT

For Groundsmaster® 300 Series

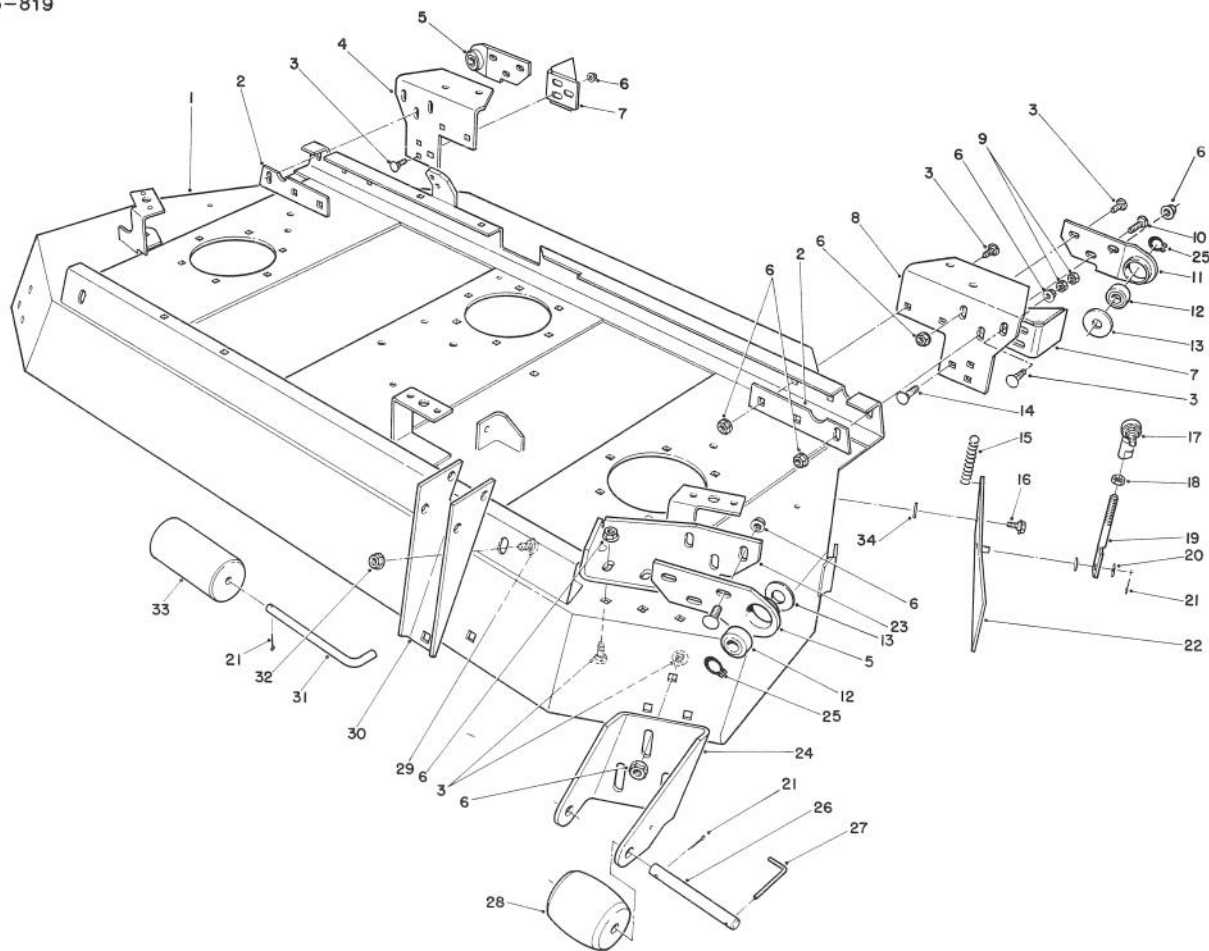


T-0390

CARRIER FRAME ASSEMBLY

Ref. No.	Part No.	Description	No. Used	Ref. No.	Part No.	Description	No. Used
1	3290-384	Pin - Lynch	4	17	63-8580	Bearing - Roller	2
2	32128-42	Nut - Flange	9	18	70-1820	Wheel - Caster, Rear (Incl. Ref. #16, 17 & 23)	2
3	66-6480	Washer - Flat	16	19	325-13	Screw - Cap Hex. Hd.	4
4	63-0860	Joint - Ball, R.H.	1	20	28-9290	Bushing	4
5	63-0900	Arm - Caster, R.H. (Incl. Ref. #20)	1	21	325-22	Screw - Cap Hex. Hd.	2
6	324-19	Screw - Cap Hex. Hd.	9	22	62-4340	Spacer - Wheel, Caster	2
7	63-0880	Joint - Ball, L.H.	1	23	302-11	Fitting - Grease 45°	2
8	63-0930	Arm - Caster, L.H.	1	24	302-40	Fitting - Grease 90°	2
9	39-3330	Bar - Clamp, Caster	2	25	85-6310	Wheel - Caster, Front (Incl. Ref. #16, 24 & 26)	2
10	32128-23	Nut - Flange	8	26	83-4740	Bearing - Roller	2
11	63-0060	Spacer	16	27	63-0730	Fork - Caster, Front	2
12	63-0960	Spacer - Caster, Rear	4	28	63-0070	Spacer	12
13	63-1910	Fork - Caster, Rear	2	29	3-6781	Washer - Thrust	2
14	325-18	Screw - Cap Hex. Hd.	2	30	302-5	Fitting - Grease	2
15	63-1770	Bushing - Spanner	2				
16	62-5580	Bushing	8				

TPS

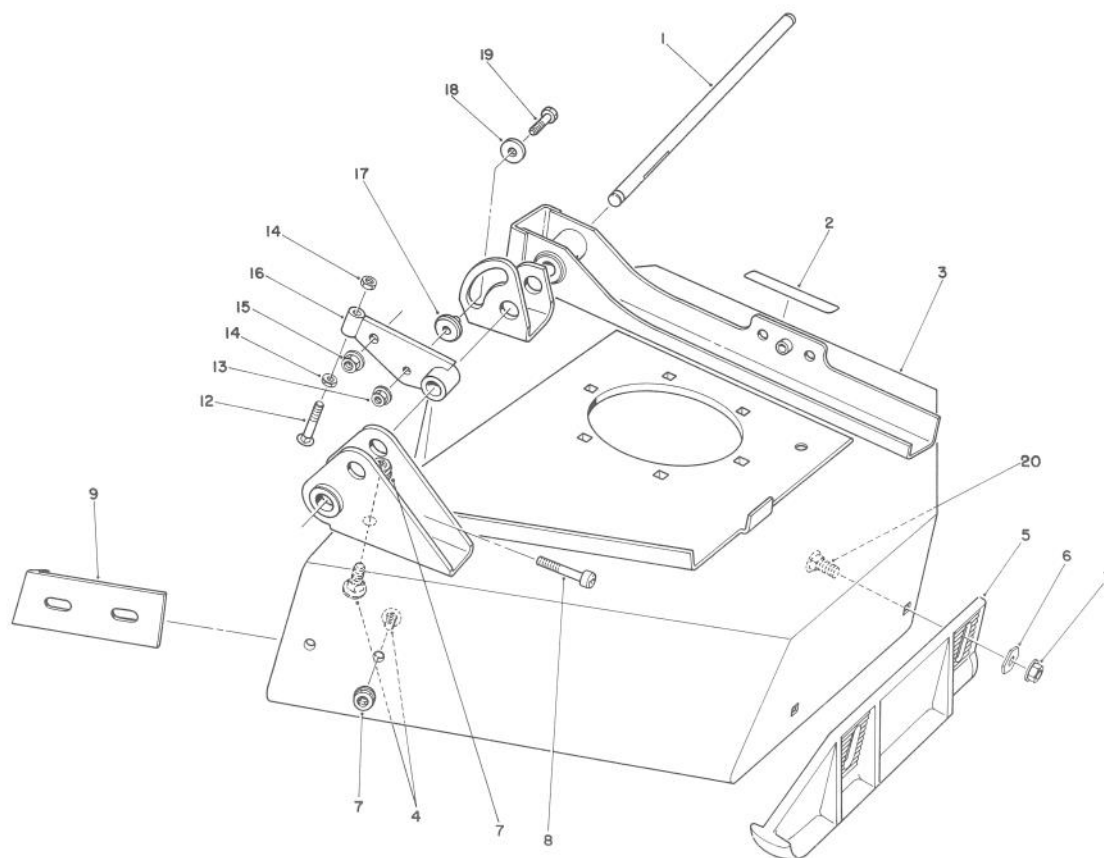


T-0391

CENTER DECK ASSEMBLY

Ref. No.	Part No.	Description	No. Used	Ref. No.	Part No.	Description	No. Used
1	63-0200	Deck - Center	1	19	66-1190	Rod - Lift	2
2	63-1960	Plate - Channel, Rear	2	20	37-8080	Washer - Flat	4
3	3231-36	Bolt - Carriage	38	21	3272-11	Pin - Cotter	5
4	66-1270	Bracket - Caster, R.H.	1	22	66-1120	Door - Safety, L.H.	1
5	66-6460	Assembly - Bracket, Hinge (Incl. Ref. 12)	2	*	66-1200	Door - Safety, R.H.	1
6	32128-43	Nut - Lock	38	23	63-0800	Bracket - Hinge, L.H.	1
7	66-1110	Bracket - Stop, Rear	2	*	63-0790	Bracket - Hinge, R.H.	1
8	66-1280	Bracket - Caster, L.H.	1	24	63-1560	Bracket - Roller, Front L.H.	1
9	32128-21	Nut - Lock	4	*	63-1550	Bracket - Roller, Front R.H.	1
10	3231-26	Bolt - Carriage	2	25	32151-62	Ring - Retaining	2
11	66-6450	Assembly - Bracket, Hinge	2	26	57-0680	Shaft - Roller, Front	2
12	63-0670	Bushing - Hinge	4	27	57-0690	Pin	2
13	27-8810	Washer - Thrust	4	28	29-4820	Roller - Front	2
14	3231-33	Bolt - Carriage	2	29	3233-9	Bolt - Carriage	4
15	63-1610	Spring - Extension	2	30	63-0360	Support - Front	2
16	37-8771	Bolt - Shoulder	2	31	63-0850	Shaft - Roller	1
17	54-8030	Joint - Ball	2	32	32128-23	Nut - Flange	4
18	3220-3	Nut - Jam	2	33	36-1740	Roller - Anti-Scalp	1
				34	39-5190	Washer - Flat	2

*Not Illustrated



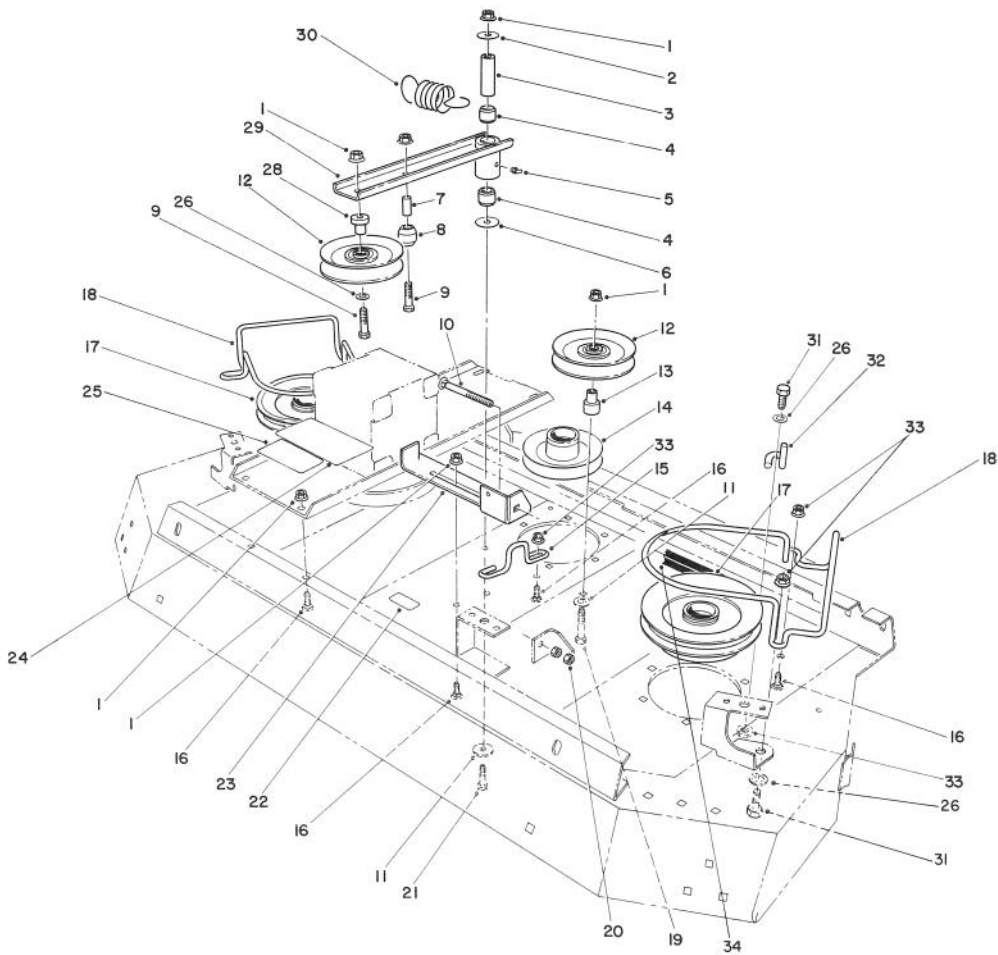
T-0392

WING DECK ASSEMBLY

Ref. No.	Part No.	Description	No. Used	Ref. No.	Part No.	Description	No. Used
1	82-6000	Shaft - Hinge	2	9	63-1200	Bracket - Stop, L.H.	1
2	66-6380	Decal - Deflector	2	*	63-1190	Bracket - Stop, R.H.	1
3	82-6030	Deck - Wing, L.H.	1	12	3230-25	Bolt - Carriage	2
*	82-6020	Deck - Wing, R.H.	1	13	32128-25	Nut - Flange	2
4	3231-36	Bolt - Carriage	10	14	3218-2	Nut - Jam	4
5	63-1800	Skid - L.H.	1	15	32128-12	Nut - Flange	2
*	63-1790	Skid - R.H.	1	16	66-1170	Arm - Door, L.H.	1
6	3290-224	Washer - Dome, Hex.	4	*	66-1180	Arm - Door, R.H.	1
7	32128-43	Nut - Flange	10	17	63-1020	Spacer - Door, Lift	2
8	3274-7	Screw - Soc. Hd.	2	18	66-6410	Washer - Spacer, Lift	2
				19	322-7	Screw - Cap Hex. Hd.	2

*Not Illustrated

Quantity shown is for R.H. and L.H. assemblies except where noted with*.

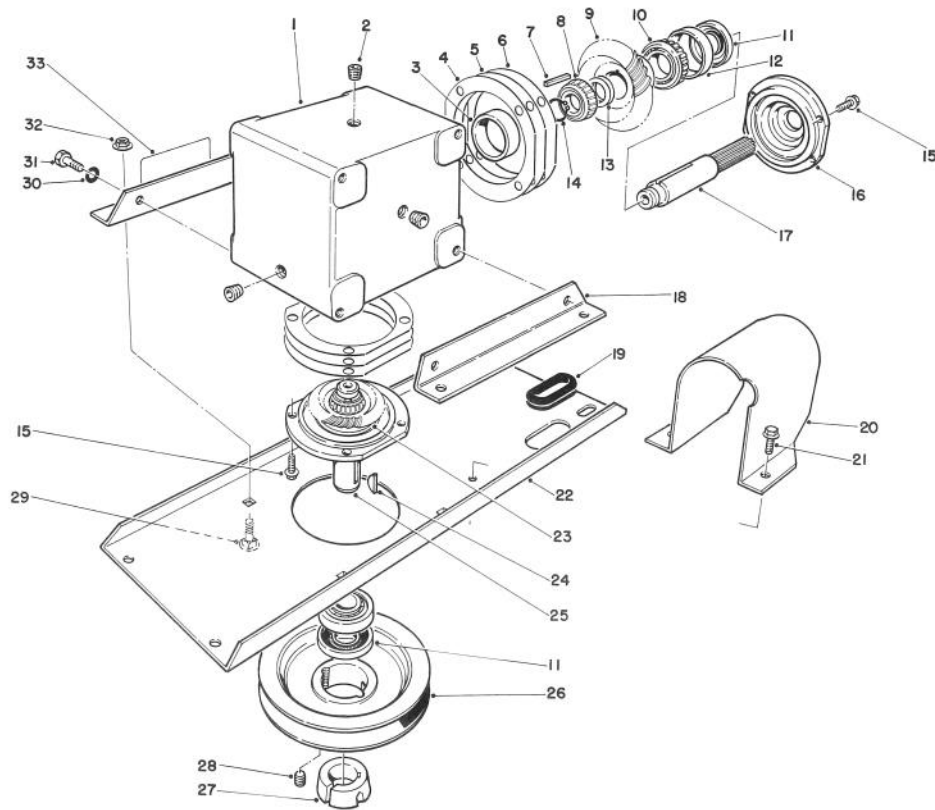


T-0393

CENTER DECK SPINDLE DRIVE ASSEMBLY

Ref. No.	Part No.	Description	No. Used
1	32128-43	Nut - Flange	18
2	36-8020	Washer - Flat	1
3	63-1660	Sleeve - Pivot, Idler	1
4	63-0920	Bushing - Tension	2
5	302-11	Fitting - Grease 45°	1
6	63-1340	Washer	A/R
7	63-1480	Spacer	1
8	23-2270	Bushing - Rubber	1
9	323-10	Screw - Cap Hex. Hd.	2
10	3231-34	Bolt - Carriage	1
11	53-6380	Washer - Flat	2
12	63-1540	Pulley - Stationary	1
13	63-1530	Spacer - Idler, Fixed	1
14	63-0090	Assembly - Pulley & Hub	1
15	66-1290	Guide - Belt	1
16	3231-36	Bolt - Carriage	10
17	63-0110	Assembly - Pulley & Hub	2
18	63-1430	Guide - Belt	2

Ref. No.	Part No.	Description	No. Used
19	323-11	Screw - Cap Hex. Hd.	1
20	3217-7	Nut - Hex.	2
21	323-20	Screw - Cap Hex. Hd.	1
22	55-4300	Decal - Warning	1
23	63-1470	Bracket - Spring	1
24	63-1740	Decal - Weights, Rear	1
25	68-8340	Decal - Bolt, Blade	1
26	3256-24	Washer - Flat	5
27	63-1540	Pulley - Idler	1
28	63-1520	Spacer - Idler	1
29	63-1450	Assembly - Arm, Idler (Incl. Ref. #4)	1
30	63-1580	Spring - Extension	1
31	323-7	Screw - Cap Hex. Hd.	4
32	67-5760	Rod - Belt	2
33	32128-21	Nut - Flange	2
34	63-1510	V-Belt - Drive, Main	1



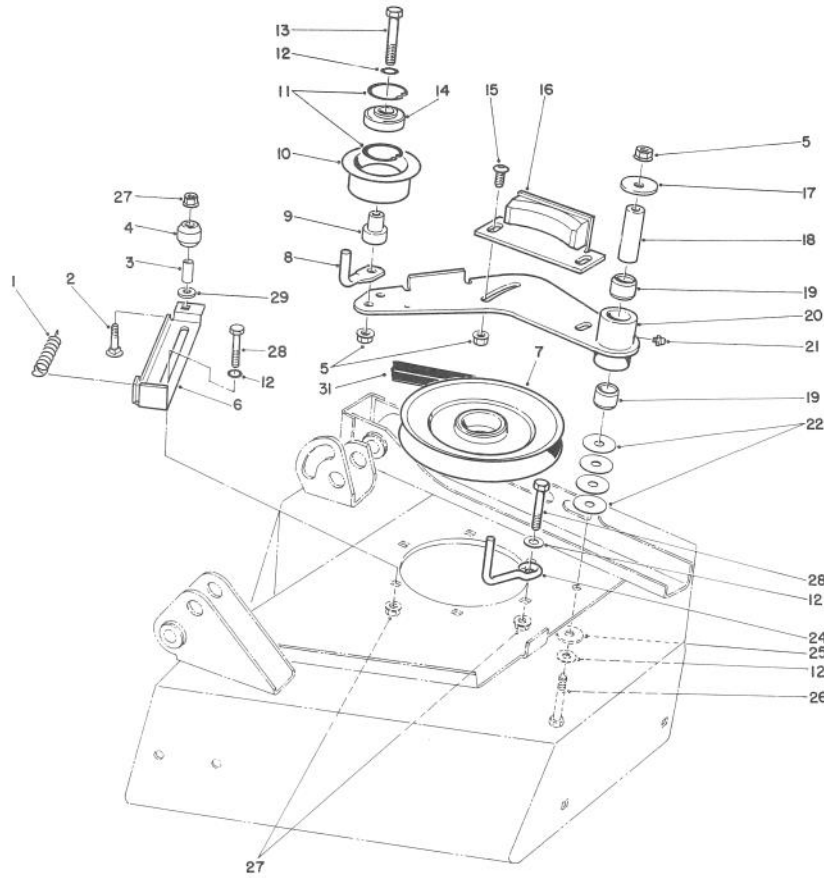
T-0961

GEAR CASE ASSEMBLY

Ref. No.	Part No.	Description	No. Used
1	68-7030	Housing	1
2	62-3490	Plug - Pipe (Solid)	4
3	62-3360	Cup - Bearing	2
4	62-3420	Gasket - .015	A/R
5	62-3430	Gasket - .005	A/R
6	62-3440	Gasket - .003	A/R
7	62-3380	Key	2
8	62-3370	Cone - Bearing	2
9	68-7080	Gear	1
10	62-3330	Cone - Bearing	2
11	62-3400	Seal	2
12	62-3340	Cup - Bearing	2
13	72-9370	Shim - .020	4
14	68-7070	Ring - Retaining	2
15	62-3310	Screw - Cap, Sems	8
16	62-3410	Cap	2
17	68-7050	Shaft	1
18	74-3540	Bracket - Box, Gear	2

Ref. No.	Part No.	Description	No. Used
19	237-152	Grommet	1
20	63-1970	Cover - Joint, Universal	1
21	32104-82	Screw - Self Tapping	2
22	74-3550	Plate - Mount, Gear Case	1
23	68-7060	Gear	1
24	3257-5	Key - Woodruff	1
25	68-7040	Shaft	1
26	63-0660	Pulley - Deck	1
27	23-1640	Bushing - Lock, Taper (Incl. Ref. #28)	1
28	3247-4	Screw - Set	2
29	3231-36	Bolt - Carriage	4
30	3253-21	Washer - Lock	4
31	323-4	Screw - Cap Hex. Hd.	4
32	32128-21	Nut - Flange	4
33	70-2560	Decal - Lube	1
*	68-6810	Assembly - Gear Case (Incl. Ref. #1-17 & 23-26)	1

*Not Illustrated



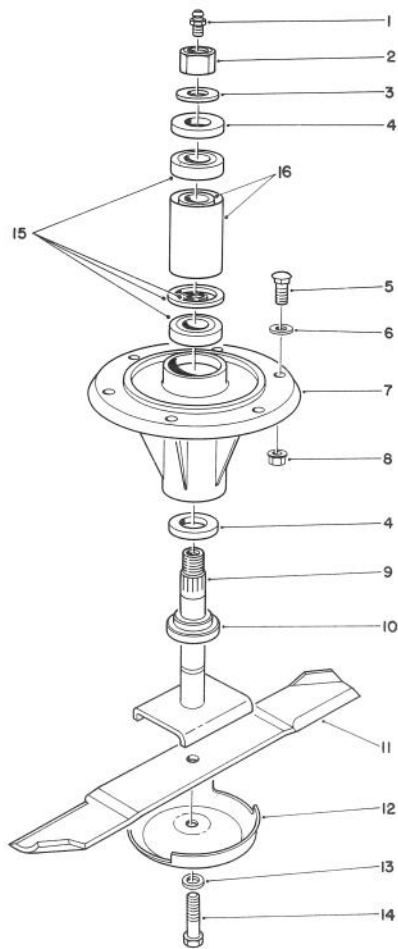
T-0395

WING DECK SPINDLE DRIVE ASSEMBLY

Ref. No.	Part No.	Description	No. Used
1	63-1590	Spring - Extension	2
2	3231-33	Bolt - Carriage	2
3	63-1480	Spacer	2
4	23-2270	Bushing - Rubber	2
5	32128-43	Nut - Flange	8
6	63-1640	Bracket - Spring	2
7	63-0100	Assembly - Pulley & Hub	2
8	63-1690	Guide - Belt	2
9	63-1520	Spacer - Idler	2
10	63-1670	Pulley - Idler	2
11	32120-42	Ring - Retaining	4
12	3256-24	Washer - Flat	10
13	323-10	Screw - Cap Hex. Hd.	2
14	66-1240	Bearing - Idler	2
15	3274-80	Screw - Button Socket Hd.	4

Ref. No.	Part No.	Description	No. Used
16	63-1030	Assembly - Bracket, Brake	2
17	36-8020	Washer - Flat	2
18	63-1660	Sleeve - Pivot, Idler	2
19	63-0920	Bushing - Tension	4
20	63-1410	Assembly - Arm, Idler (Incl. Ref. #19)	2
21	302-5	Fitting - Grease, Straight	2
22	63-1340	Washer	A/R
24	63-1400	Rod - Belt	2
25	53-6380	Washer - Flat	2
26	323-15	Screw - Cap Hex. Hd.	2
27	32128-21	Nut - Flange	8
28	323-7	Screw - Cap Hex. Hd.	6
29	36-1430	Spacer	2
31	72-3760	V-Belt - Drive, Wing	2

Quantity shown is for a R.H. and a L.H. assembly.

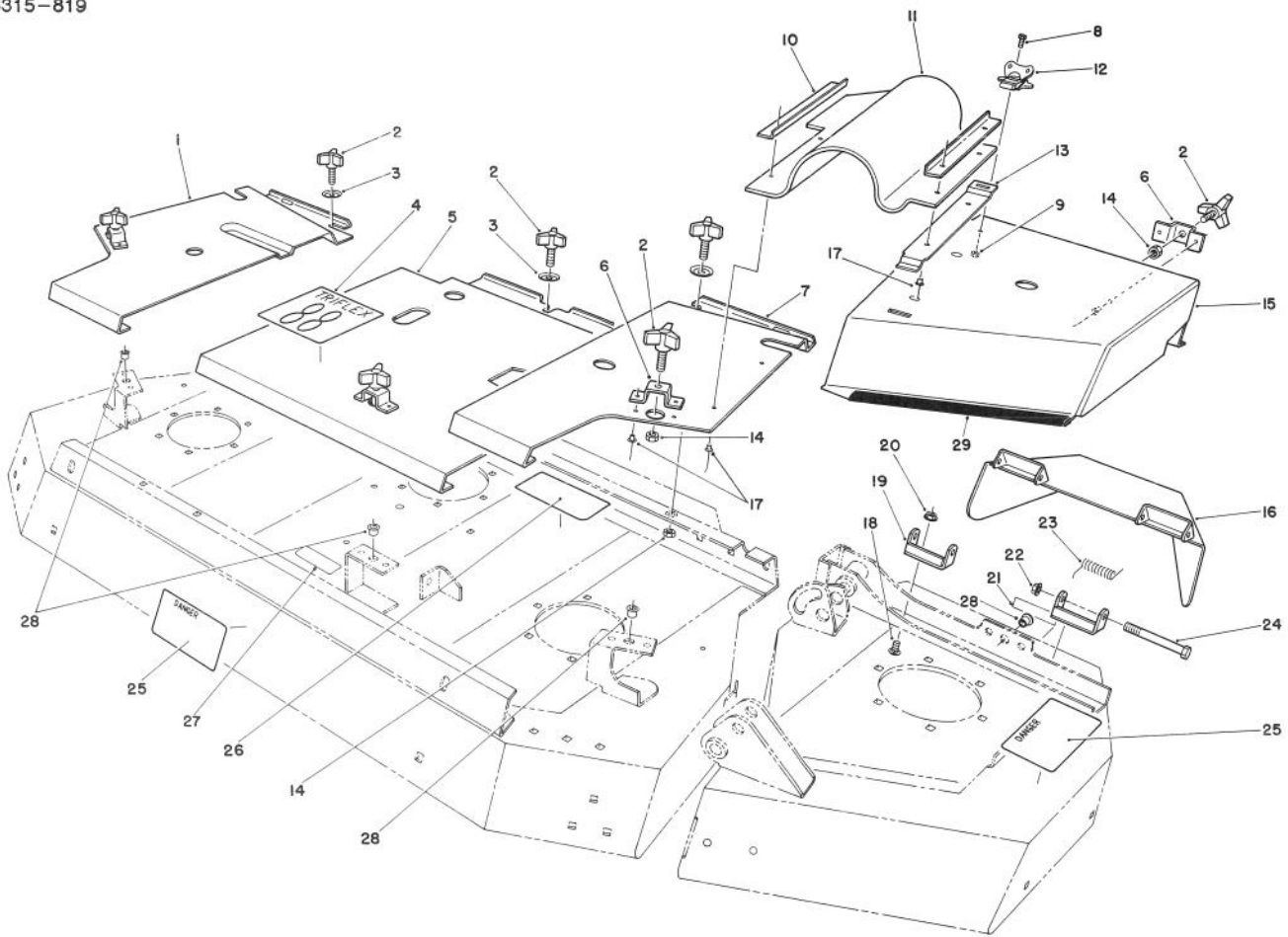


T-0396

SPINDLE ASSEMBLY

Ref. No.	Part No.	Description	No. Used	Ref. No.	Part No.	Description	No. Used
1	302-2	Fitting - Grease	5	10	27-0950	Spacer - Spindle	5
2	32146-20	Nut - Jam	5	11	63-0080	Blade - 19"	5
3	7-4150	Washer	5	12	72-9360	Cup - Anti-Scalp	5
4	253-139	Seal - Wave	10	13	67-5770	Washer - Flat	5
5	3231-36	Bolt - Carriage	24	14	44-2200	Screw - Cap Hex. Hd.	5
6	3256-24	Washer - Flat	A/R	15	13-5109	Assembly - Bearing (Incl. Ref. #16)	5
7	63-0050	Housing - Spindle	5	16	67-5750	Spacer - Matched Set	5
8	32128-21	Nut - Flange	24				
9	51-3551	Shaft - Spindle	5				

Quantities shown are for 5 assemblies.



T-0397

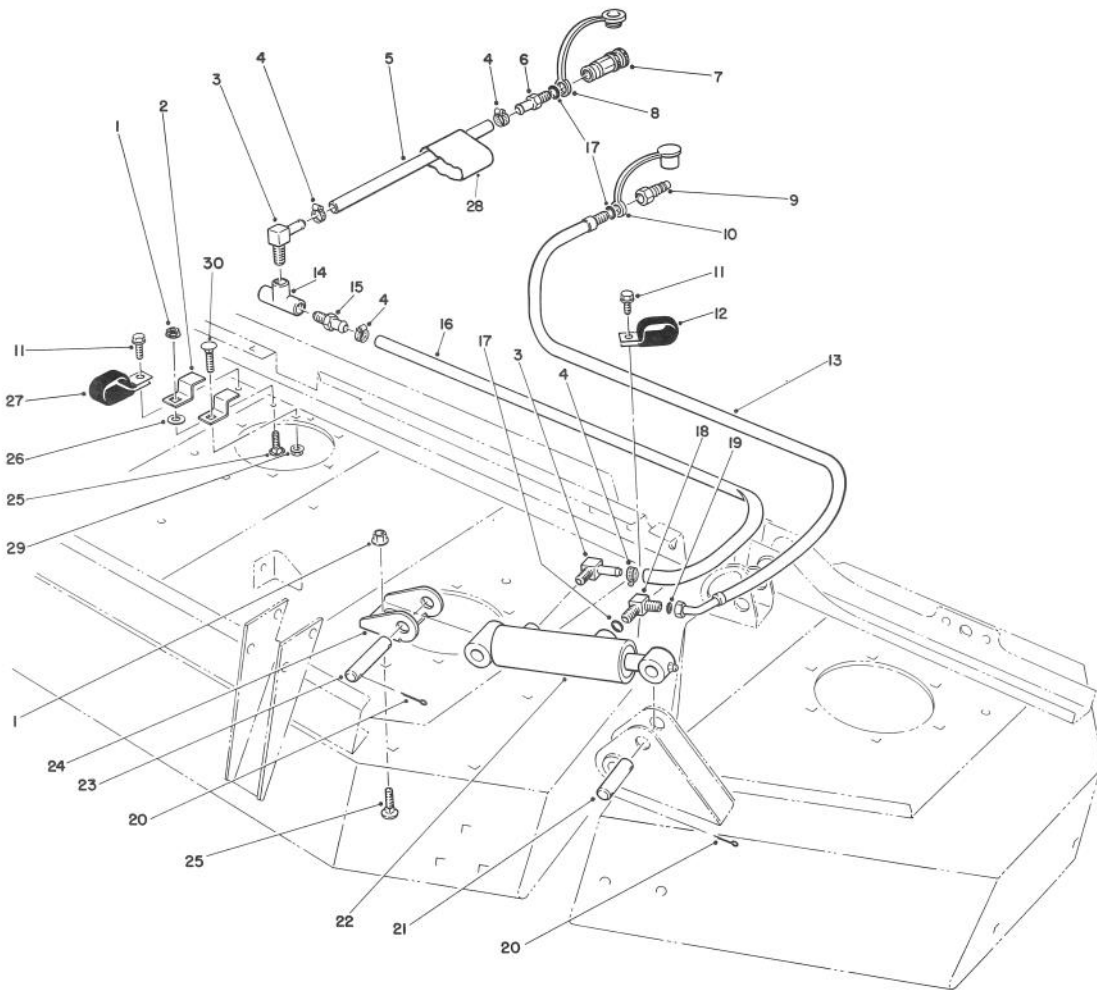
COVER ASSEMBLY

Ref. No.	Part No.	Description	No. Used	Ref. No.	Part No.	Description	No. Used
1	63-1140	Cover - Center, R.H.	1	16	63-1710	Chute - Discharge, L.H.	1
2	27-4570	Knob	8	*	63-1700	Chute - Discharge, R.H.	1
3	66-6310	Washer - Cup	3	17	3269-5	Rivet - Pop	18
4	63-1490	Decal - 88" Triflex	1	†18	3230-1	Bolt - Carriage	8
5	63-1130	Cover - Center	1	†19	29-5590	Bracket - Pivot, Deflector	4
6	66-1260	Bracket - Knob	5	†20	32128-25	Nut - Flange	8
7	63-1150	Cover - Center, L.H.	1	†21	66-6380	Decal - Chute Removed	2
8	3290-330	Screw - Cap Hex. Hd.	4	†22	32128-21	Nut - Flange	4
9	3296-9	Nut - Lock	4	†23	40-6230	Spring - Torsion	4
†10	66-6340	Stiffener - Rubber	4	†24	323-15	Screw - Cap Hex. Hd.	4
†11	70-1830	Cover - Flex	2	25	66-1340	Decal - Discharge	3
†12	66-1390	Latch - Spring	2	26	63-1600	Decal - Belt Routing	1
†13	66-1360	Latch - Cover	2	27	55-4300	Decal - Spring Loaded	1
14	3296-59	Nut - Lock	8	†28	3290-469	Nut - Grip	8
15	63-1120	Cover - Wing, L.H.	1	†29	37-9790	Trim	2
*	63-1110	Cover - Wing, R.H.	1				

*Not Illustrated

†Special Tool Required to Install.

‡Quantity shown is for R.H. and L.H. assemblies.



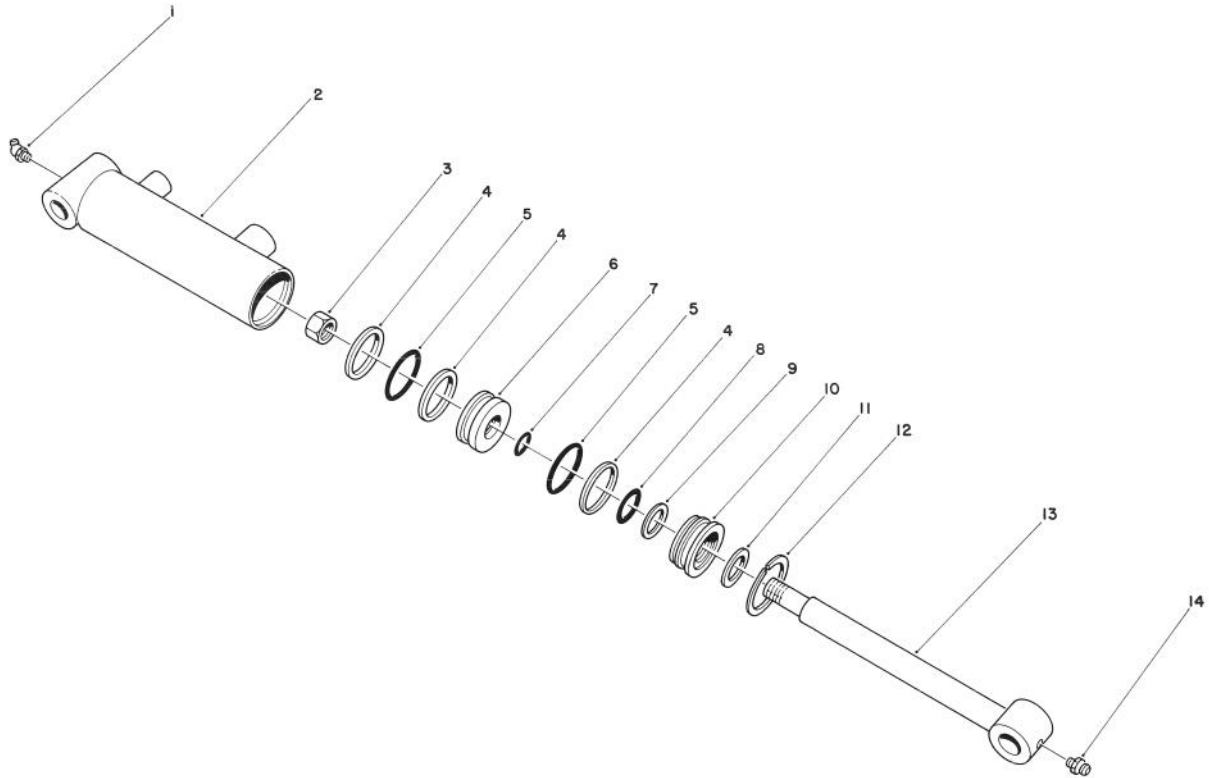
T-0398

HYDRAULIC LIFT ASSEMBLY

Ref. No.	Part No.	Description	No. Used
1	32128-43	Nut - Flange	6
2	66-1380	Clamp - Hose	2
3	66-6400	Fitting - Elbow 90°	3
4	2412-108	Clamp - Hose	6
5	63-1352	Hose - Hydraulic	1
6	353-983	Fitting - Straight (Incl. Ref. #17)	1
7	63-1220	Coupler - Quick Disconnect	1
8	353-984	Plug - Dust	1
9	63-1240	Nipple - Quick Disconnect	2
10	353-985	Cap - Dust	2
11	32104-82	Screw - Self Tapping	5
12	2412-105	Clamp - Tube, Double	4
13	63-1300	Assembly - Hyd. Hose, LH (Incl. Ref. #17)	1
*	63-1290	Assembly - Hyd. Hose, RH (Incl. Ref. #17)	1
14	304-77	Fitting - Tee	1

Ref. No.	Part No.	Description	No. Used
15	304-73	Fitting - Straight	2
16	63-1354	Hose - Hydraulic, L.H.	1
*	63-1353	Hose - Hydraulic, R.H.	1
17	237-42	O-Ring	5
18	340-82	Fitting - Elbow 90° (Incl. Ref. #17 & 19)	2
19	237-21	O-Ring	2
20	3272-11	Pin - Cotter	8
21	63-1060	Pin - Clevis	2
22	63-0040	Cylinder - Hydraulic	2
23	63-1070	Pin - Clevis	2
24	63-1050	Bracket - Cylinder, Lift	2
25	3231-36	Bolt - Carriage	6
26	5-0838	Washer - Flat	1
27	2412-104	R-Clamp	1
28	66-6420	Sleeve - Protective	1
29	32128-21	Nut - Flange	1

*Not Illustrated



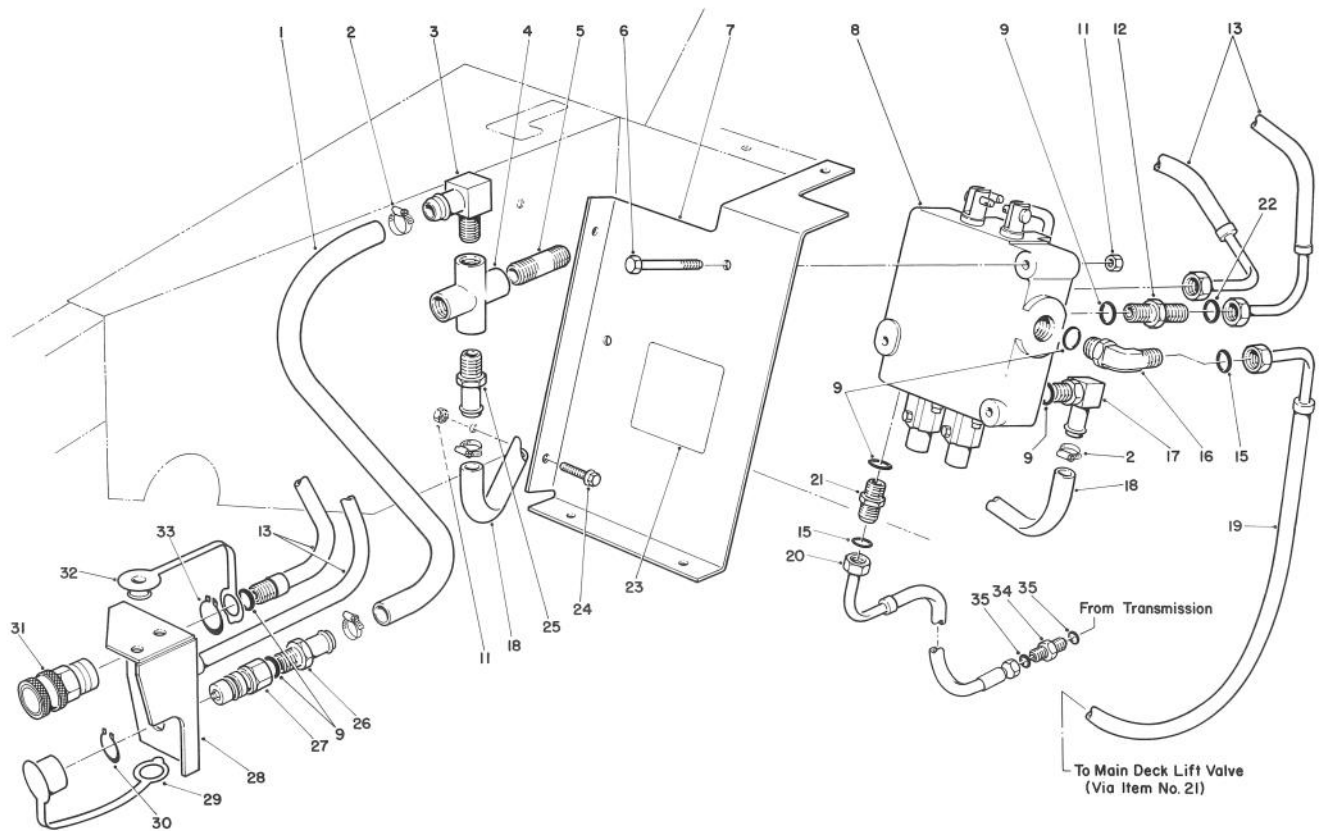
T-0399

HYDRAULIC CYLINDER NO. 63-0040

Ref. No.	Part No.	Description	No. Used
1	302-11	Fitting - Grease 45°	1
2		Body - Cylinder	1
3	43-5130	Nut - Lock	1
4		Washer - Backup	3
5		O-Ring	2
6	43-5150	Gland - Piston	1
7		O-Ring	1
8		O-Ring	1

Ref. No.	Part No.	Description	No. Used
9		Washer - Backup	1
10	43-5140	Gland - Rod	1
11		Seal - Rod	1
12	43-5220	Ring - Retaining	1
13	67-5540	Rod - Piston	1
14	302-5	Fitting - Grease	1
*	43-5250	Kit - Repair (Incl. Ref. #4, 5, 7-9 & 11)	1

*Not Illustrated



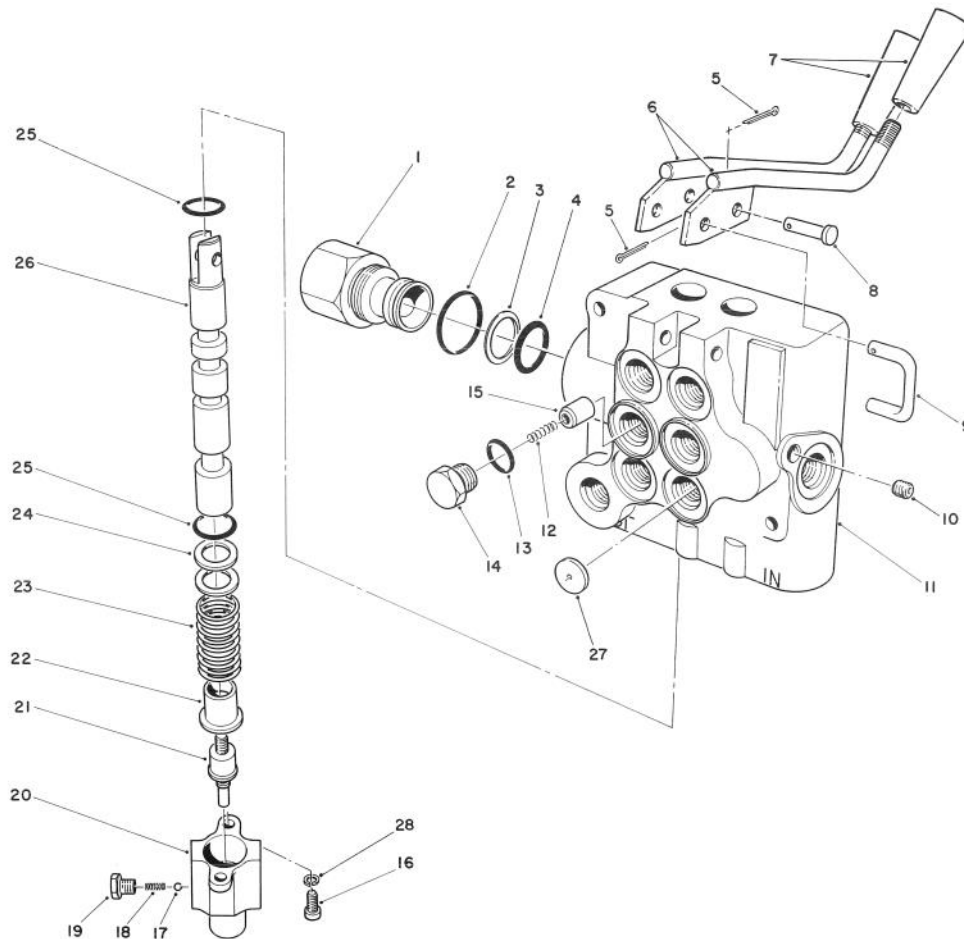
T-0400

TRACTION UNIT HYDRAULIC ASSEMBLY

Ref. No.	Part No.	Description	No. Used
1	63-1351	Hose - Hydraulic	1
2	2412-36	Clamp - Hose	4
3	66-6400	Fitting - Elbow 90° (Only one fitting needed for non-power steering units)	2
4	353-974	Fitting - Cross	1
5	289-4	Coupling	1
6	321-11	Screw - Cap Hex. Hd.	2
7	63-1210	Plate - Mount, Valve	1
8	63-0020	Assembly - Valve	1
9	237-42	O-Ring	8
11	32152-4	Nut - Flange	7
12	340-1	Fitting - Straight (Incl. Ref. #9 & 22)	2
13	63-1270	Assembly - Hydraulic Hose (Incl. Ref. #9)	2
15	237-22	O-Ring	4
16	340-77	Fitting - Elbow 90° (Incl. Ref. #9 & 15)	1
17	353-982	Fitting - Elbow 90° (Incl. Ref. #9)	1
18	63-1350	Hose - Hydraulic	1
19	67-5530	Assembly - Hydraulic Hose	1

Ref. No.	Part No.	Description	No. Used
20	63-1080	Assembly - Hydraulic Hose	1
21	340-2	Fitting - Straight (Incl. Ref. #9 & 15)	2
22	237-21	O-Ring	2
23	63-1500	Decal - Wing	1
24	321-4	Screw - Cap Hex. Hd.	5
25	304-73	Fitting - Straight (For non-power steering units only) (Ref. #3 is for power steering units)	1
26	353-983	Fitting - Straight (Incl. Ref. #9)	1
27	63-1240	Nipple - Quick Disconnect	1
28	63-1260	Bracket - Mount, Hose	1
29	353-985	Cap - Dust	1
30	32151-83	Ring - Retaining	2
31	63-1220	Coupler - Quick Disconnect	2
32	353-984	Plug - Dust	2
33	32151-83	Ring - Retaining	2
34	340-114	Fitting - Union (Incl. Ref. #35) (For power steering units only)	1
35	237-30	O-Ring	2
*	3290-378	Cable - Tie	6

*Not Illustrated

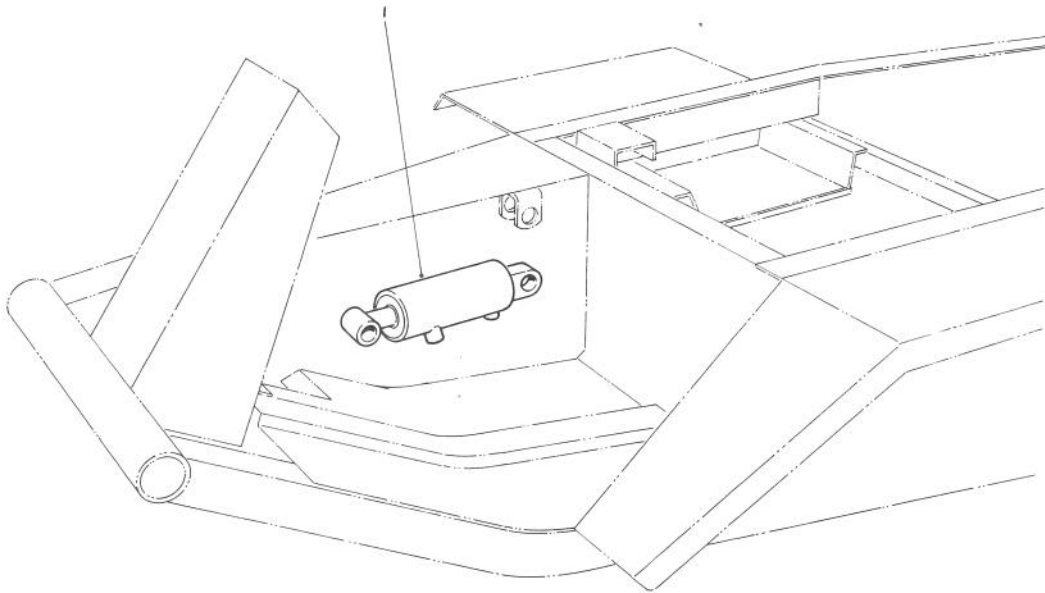


T-0401

HYDRAULIC VALVE ASSEMBLY NO. 63-0020

Ref. No.	Part No.	Description	No. Used	Ref. No.	Part No.	Description	No. Used
1	67-5670	Assembly - Power Beyond (Incl. Ref. #2-4)	1	18		Spring - Detent	4
2		O-Ring	2	19		Plug - Detent	4
3		Washer - Backup	1	20	67-5620	End Cap - Detent	2
4		O-Ring	1	21	67-5630	Spool - Detent	2
5	3272-6	Pin - Cotter	4	22		Spacer	2
6	67-5710	Handle	2	23		Spring - Return	2
7	233-39	Knob - Handle	2	24		Washer	4
8	67-5600	Pin - Clevis	2	25		O-Ring	4
9	67-5610	Hook - C	2	26		Spool	2
10	285-17	Plug - Pipe	1	27	67-5640	Plate - Orifice	2
11	63-0020	Assembly - Valve (Incl. Ref. #1-4 & 8-28)	1	28	3253-17	Washer - Lock	4
12		Spring - Load Check	2	*	67-5580	Kit - Seal (Incl. Ref. #2-4, 13 & 25)	1
13		O-Ring	5	*	67-5560	Kit - Load Check (Incl. Ref. #12-15)	2
14	67-5660	Plug (Incl. Ref. #13)	5	*	67-5570	Kit - Detent (Incl. Ref. #17-19)	4
15		Poppet - Load Check	2	*	67-5590	Kit - Return Spring (Incl. Ref. #22-24)	2
16	3250-31	Screw	4				
17		Ball - Detent	4				

*Not Illustrated

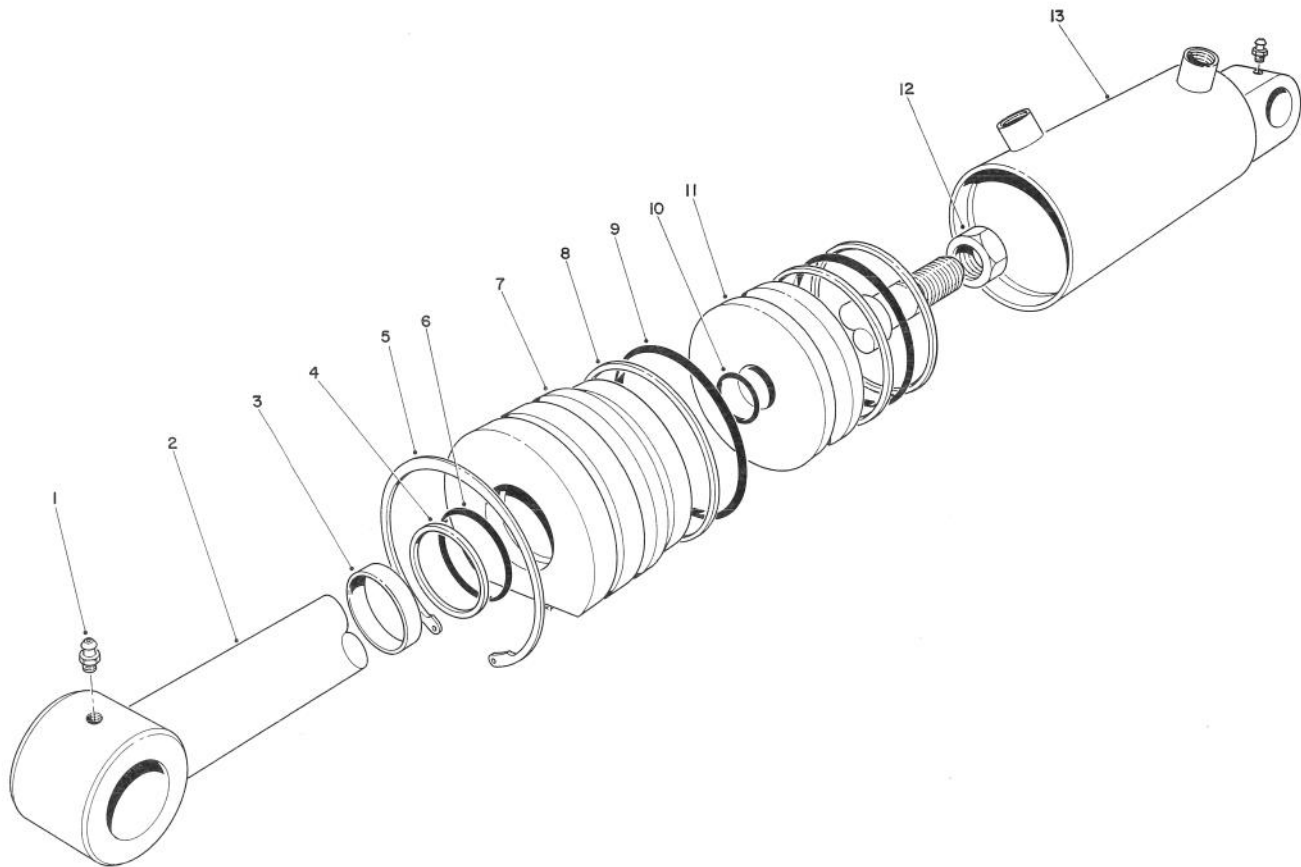


T-0405

HYDRAULIC LIFT CYLINDER INSTALLATION ASSEMBLY

Ref. No.	Part No.	Description	No. Used
1	66-1250	Hydraulic Cylinder Assembly	1

Ref. No.	Part No.	Description	No. Used



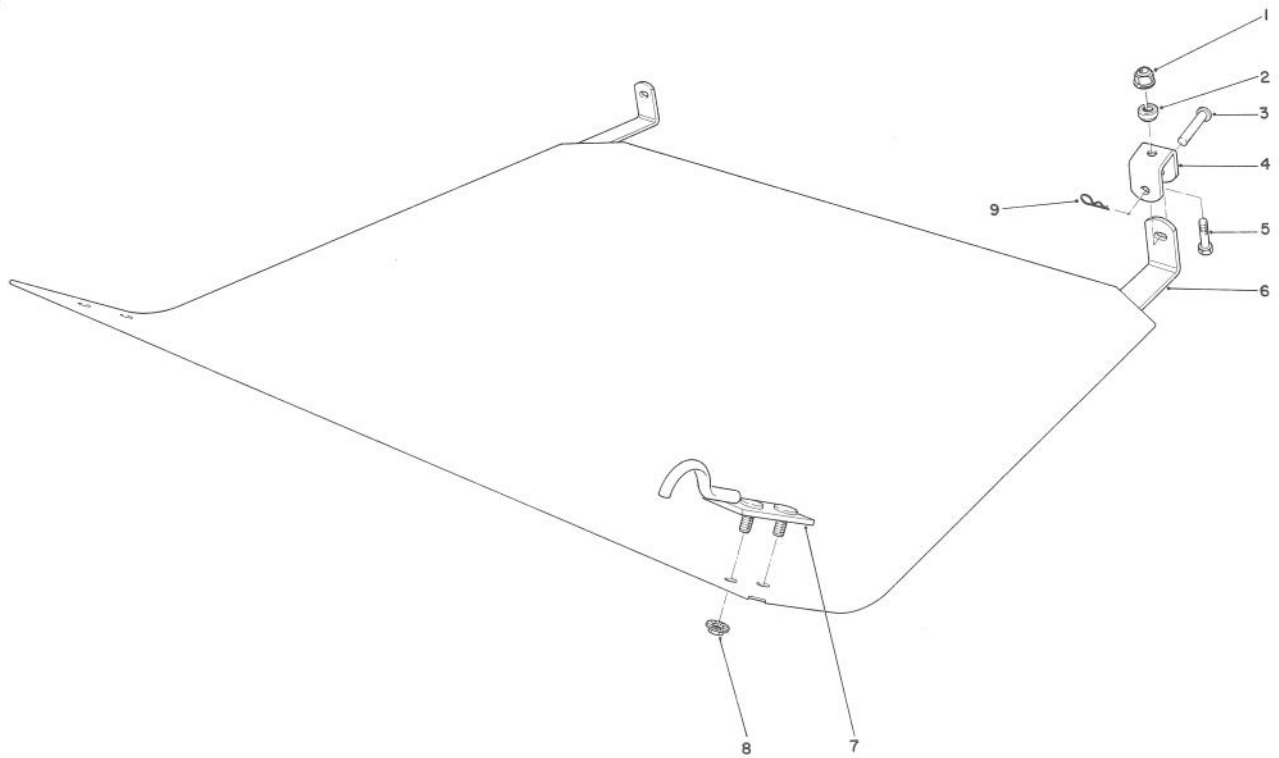
T-0406

HYDRAULIC LIFT CYLINDER NO. 66-1250

Ref. No.	Part No.	Description	No. Used
1	302-22	Fitting - Grease	2
2	67-5480	Shaft	1
3		Seal - Dust	1
4		Ring - Backup	1
5	67-5470	Ring - Retaining	1
6		O-Ring	1
7	67-5460	Head	1
8		Ring - Backup	3

Ref. No.	Part No.	Description	No. Used
9		O-Ring	2
10		O-Ring	1
11	67-5450	Piston	1
12	60-9760	Nut - Hex.	1
13	67-5490	Barrel	1
*	67-5500	Kit - Repair (Incl. Ref. #3, 4, 6 & 8-10)	1

*Not Illustrated

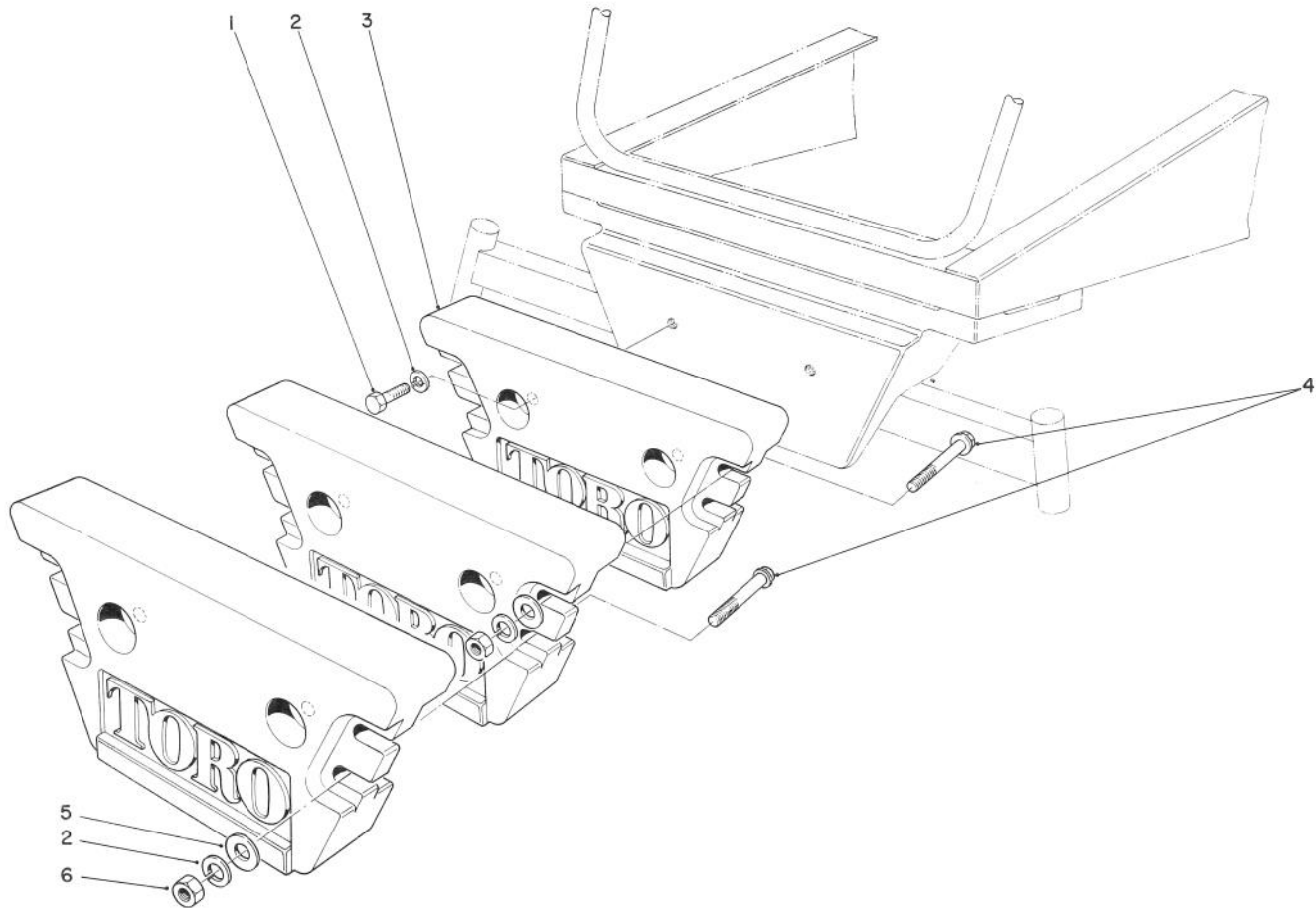


T-0402

TRACTION UNIT BELLY SHIELD ASSEMBLY

Ref. No.	Part No.	Description	No. Used
1	32128-21	Nut - Flange (For Diesel Traction Units Only)	2
2	46-1600	Spacer (For Diesel Traction Units Only)	2
3	283-23	Pin - Clevis	2
4	39-1470	Hanger - Shield, Belly	2

Ref. No.	Part No.	Description	No. Used
5	323-7	Screw - Cap Hex. Hd.	2
6	39-1410	Shield - Belly	1
7	39-1440	Hook - Shield, Belly	2
8	32128-25	Nut - Flange	4
9	3290-322	Pin - Cotter, Hair	2



T-0403

REAR WEIGHTS

Ref. No.	Part No.	Description	No. Used
1	325-6	Screw - Cap Hex. Hd.	2
2	3253-7	Washer - Lock	6
3	24-5790	Weight - Rear	3

Ref. No.	Part No.	Description	No. Used
4	325-14	Screw - Cap Hex. Hd.	4
5	3256-26	Washer - Flat	10
6	3217-9	Nut - Hex.	4

TORO PART NUMBER INDEX

3315-819

Part No.	Description	Pg. No.	Ref. No.	Qty.	Part No.	Description	Pg. No.	Ref. No.	Qty.
3-6781	Washer - Thrust	1	29	2	63-0020	Assembly - Valve	12	11	1
5-0838	Washer - Flat	9	26	1	63-0040	Cylinder - Hydraulic	9	22	2
7-4150	Washer	7	3	5	63-0050	Housing - Spindle	7	7	5
13-5109	Assembly - Bearing	7	15	5	63-0060	Spacer	1	11	16
23-1640	Bushing - Lock, Taper	5	27	1	63-0070	Spacer	1	28	12
23-2270	Bushing - Rubber	6	4	2	63-0080	Blade - 19	7	11	5
23-2270	Bushing - Rubber	4	8	1	63-0090	Assembly - Pulley & Hub	4	14	1
24-5790	Weight - Rear	15	3	3	63-0100	Assembly - Pulley & Hub	6	7	2
27-0950	Spacer - Spindle	7	10	5	63-0110	Assembly - Pulley & Hub	4	17	2
27-4570	Knob	8	2	8	63-0200	Deck - Center	2	1	1
27-8810	Washer - Thrust	2	13	4	63-0360	Support - Front	2	30	2
28-9290	Bushing	1	20	4	63-0660	Pulley - Deck	5	26	1
29-4820	Roller - Front	2	28	2	63-0670	Bushing - Hinge	2	12	4
29-5590	Bracket - Pivot, Deflector	8	19	4	63-0730	Fork - Caster, Front	1	27	2
36-1430	Spacer	6	29	2	63-0790	Bracket - Hinge, R.H.	2	*	1
36-1740	Roller - Anti-Scalp	2	33	1	63-0800	Bracket - Hinge, L.H.	2	23	1
36-8020	Washer - Flat	4	2	1	63-0850	Shaft - Roller	2	31	1
36-8020	Washer - Flat	6	17	2	63-0860	Joint - Ball, R.H.	1	4	1
37-8080	Washer - Flat	2	20	4	63-0880	Joint - Ball, L.H.	1	7	1
37-8771	Bolt - Shoulder	2	16	2	63-0900	Arm - Caster, R.H.	1	5	1
37-9790	Trim	8	29	2	63-0920	Bushing - Tension	4	4	2
39-1410	Shield - Belly	14	6	1	63-0920	Bushing - Tension	6	19	4
39-1440	Hook - Shield, Belly	14	7	2	63-0930	Arm - Caster, L.H.	1	8	1
39-1470	Hanger - Shield, Belly	14	4	2	63-0960	Spacer - Caster, Rear	1	12	4
39-3330	Bar - Clamp, Caster	1	9	2	63-1020	Spacer - Door, Lift	3	17	2
39-5190	Washer - Flat	2	34	2	63-1030	Assembly - Bracket, Brake	6	16	2
40-6230	Spring - Torsion	8	23	4	63-1050	Bracket - Cylinder, Lift	9	24	2
43-5130	Nut - Lock	10	3	1	63-1060	Pin - Clevis	9	21	2
43-5140	Gland - Rod	10	10	1	63-1070	Pin - Clevis	9	23	2
43-5150	Gland - Piston	10	6	1	63-1080	Assembly - Hydraulic Hose	11	20	1
43-5220	Ring - Retaining	10	12	1	63-1110	Cover - Wing, R.H.	8	*	1
43-5250	Kit - Repair	10	*	1	63-1120	Cover - Wing, L.H.	8	15	1
44-2200	Screw - Cap Hex. Hd.	7	14	5	63-1130	Cover - Center	8	5	1
46-1600	Spacer (For Diesel Traction)	14	2	2	63-1140	Cover - Center, R.H.	8	1	1
51-3551	Shaft - Spindle	7	9	5	63-1150	Cover - Center, L.H.	8	7	1
53-6380	Washer - Flat	4	11	2	63-1190	Bracket - Stop, R.H.	3	*	1
53-6380	Washer - Flat	6	25	2	63-1200	Bracket - Stop, L.H.	3	9	1
54-8030	Joint - Ball	2	17	2	63-1210	Plate - Mount, Valve	11	7	1
55-4300	Decal - Spring Loaded	8	27	1	63-1220	Coupler - Quick Disconnect	9	7	1
55-4300	Decal - Warning	4	22	1	63-1220	Coupler - Quick Disconnect	11	31	2
57-0680	Shaft - Roller, Front	2	26	2	63-1240	Nipple - Quick Disconnect	9	9	2
57-0690	Pin	2	27	2	63-1240	Nipple - Quick Disconnect	11	27	1
60-9760	Nut - Hex.	13	12	1	63-1260	Bracket - Mount, Hose	11	28	1
62-3310	Screw - Cap, Sems	5	15	8	63-1270	Assembly - Hydraulic Hose	11	13	2
62-3330	Cone - Bearing	5	10	2	63-1290	Assembly - Hyd. Hose, RH	9	*	1
62-3340	Cup - Bearing	5	12	2	63-1300	Assembly - Hyd. Hose, LH	9	13	1
62-3360	Cup - Bearing	5	3	2	63-1340	Washer	4	6 A/R	
62-3370	Cone - Bearing	5	8	2	63-1340	Washer	6	22 A/R	
62-3380	Key	5	7	2	63-1350	Hose - Hydraulic	11	18	1
62-3400	Seal	5	11	2	63-1351	Hose - Hydraulic	11	1	1
62-3410	Cap	5	16	2	63-1352	Hose - Hydraulic	9	5	1
62-3420	Gasket - .015	5	4 A/R		63-1353	Hose - Hydraulic, R.H.	9	*	1
62-3430	Gasket - .005	5	5 A/R		63-1354	Hose - Hydraulic, L.H.	9	16	1
62-3440	Gasket - .003	5	6 A/R		63-1400	Rod - Belt	6	24	2
62-3490	Plug - Pipe (Solid)	5	2	4	63-1410	Assembly - Arm, Idler	6	20	2
62-4340	Spacer - Wheel, Caster	1	22	2	63-1430	Guide - Belt	4	18	2
62-5580	Bushing	1	16	8	63-1450	Assembly - Arm, Idler	4	29	1
63-0020	Assembly - Valve	11	8	1	63-1470	Bracket - Spring	4	23	1

*Not Illustrated

TORO PART NUMBER INDEX (Cont.)

Part No.	Description	Pg. Ref.			Part No.	Description	Pg. Ref.		
		No.	No.	Qty.			No.	No.	Qty.
63-1480	Spacer	6	3	2	67-5460	Head	13	7	1
63-1480	Spacer	4	7	1	67-5470	Ring - Retaining	13	5	1
63-1490	Decal - 88 Triflex	8	4	1	67-5480	Shaft	13	2	1
63-1500	Decal - Wing	11	23	1	67-5490	Barrel	13	13	1
63-1510	V-Belt - Drive, Main	4	34	1	67-5500	Kit - Repair	13	*	1
63-1520	Spacer - Idler	6	9	2	67-5530	Assembly - Hydraulic Hose	11	19	1
63-1520	Spacer - Idler	4	28	1	67-5540	Rod - Piston	10	13	1
63-1530	Spacer - Idler, Fixed	4	13	1	67-5560	Kit - Load Check	12	*	2
63-1540	Pulley - Idler	4	27	1	67-5570	Kit - Detent	12	*	4
63-1540	Pulley - Stationary	4	12	1	67-5580	Kit - Seal	12	*	1
63-1550	Bracket - Roller, Front R.H.	2	*	1	67-5590	Kit - Return Spring	12	*	2
63-1560	Bracket - Roller, Front L.H.	2	24	1	67-5600	Pin - Clevis	12	8	2
63-1580	Spring - Extension	4	30	1	67-5610	Hook - C	12	9	2
63-1590	Spring - Extension	6	1	2	67-5620	End Cap - Detent	12	20	2
63-1600	Decal - Belt Routing	8	26	1	67-5630	Spool - Detent	12	21	2
63-1610	Spring - Extension	2	15	2	67-5640	Plate - Orifice	12	27	2
63-1640	Bracket - Spring	6	6	2	67-5660	Plug	12	14	5
63-1660	Sleeve - Pivot, Idler	4	3	1	67-5670	Assembly - Power Beyond	12	1	1
63-1660	Sleeve - Pivot, Idler	6	18	2	67-5710	Handle	12	6	2
63-1670	Pulley - Idler	6	10	2	67-5750	Spacer - Matched Set	7	16	5
63-1690	Guide - Belt	6	8	2	67-5760	Rod - Belt	4	32	2
63-1700	Chute - Discharge, R.H.	8	*	1	67-5770	Washer - Flat	7	13	5
63-1710	Chute - Discharge, L.H.	8	16	1	68-6810	Assembly - Gear Case	5	*	1
63-1740	Decal - Weights, Rear	4	24	1	68-7030	Housing	5	1	1
63-1770	Bushing - Spanner	1	15	2	68-7040	Shaft	5	25	1
63-1790	Skid - R.H.	3	*	1	68-7050	Shaft	5	17	1
63-1800	Skid - L.H.	3	5	1	68-7060	Gear	5	23	1
63-1910	Fork - Caster, Rear	1	13	2	68-7070	Ring - Retaining	5	14	2
63-1960	Plate - Channel, Rear	2	2	2	68-7080	Gear	5	9	1
63-1970	Cover - Joint, Universal	5	20	1	68-8340	Decal - Bolt, Blade	4	25	1
63-8580	Bearing - Roller	1	17	2	70-1820	Wheel - Caster, Rear	1	18	2
66-1110	Bracket - Stop, Rear	2	7	2	70-1830	Cover - Flex	8	11	2
66-1120	Door - Safety, L.H.	2	22	1	70-2560	Decal - Lube	5	33	1
66-1170	Arm - Door, L.H.	3	16	1	72-3760	V-Belt - Drive, Wing	6	31	2
66-1180	Arm - Door, R.H.	3	*	1	72-9360	Cup - Anti-Scalp	7	12	5
66-1190	Rod - Lift	2	19	2	72-9370	Shim - .020	5	13	4
66-1200	Door - Safety, R.H.	2	*	1	74-3540	Bracket - Box, Gear	5	18	2
66-1240	Bearing - Idler	6	14	2	74-3550	Plate - Mount, Gear Case	5	22	1
66-1260	Bracket - Knob	8	6	5	82-6000	Shaft - Hinge	3	1	2
66-1270	Bracket - Caster, R.H.	2	4	1	82-6020	Deck - Wing, R.H.	3	*	1
66-1280	Bracket - Caster, L.H.	2	8	1	82-6030	Deck - Wing, L.H.	3	3	1
66-1290	Guide - Belt	4	15	1	83-4740	Bearing - Roller	1	26	2
66-1340	Decal - Discharge	8	25	3	85-6310	Wheel - Caster, Front	1	25	2
66-1360	Latch - Cover	8	13	2	233-39	Knob - Handle	12	7	2
66-1380	Clamp - Hose	9	2	2	237-21	O-Ring	9	19	2
66-1390	Latch - Spring	8	12	2	237-21	O-Ring	11	22	2
66-6310	Washer - Cup	8	3	3	237-22	O-Ring	11	15	4
66-6340	Stiffener - Rubber	8	10	4	237-30	O-Ring	11	35	2
66-6380	Decal - Chute Removed	8	21	2	237-42	O-Ring	11	9	8
66-6380	Decal - Deflector	3	2	2	237-42	O-Ring	9	17	5
66-6400	Fitting - Elbow 90°	11	3	2	237-152	Grommet	5	19	1
66-6400	Fitting - Elbow 90°	9	3	3	2412-36	Clamp - Hose	11	2	4
66-6410	Washer - Spacer, Lift	3	18	2	2412-104	R-Clamp	9	27	1
66-6420	Sleeve - Protective	9	28	1	2412-105	Clamp - Tube, Double	9	12	4
66-6450	Assembly - Bracket, Hinge	2	11	2	2412-108	Clamp - Hose	9	4	6
66-6460	Assembly - Bracket, Hinge	2	5	2	253-139	Seal - Wave	7	4	10
66-6480	Washer - Flat	1	3	16	283-23	Pin - Clevis	14	3	2
67-5450	Piston	13	11	1	285-17	Plug - Pipe	12	10	1

*Not Illustrated

TORO PART NUMBER INDEX (Cont.)

3315-819

Part No.	Description	Pg. Ref. No.	No.	Qty.	Part No.	Description	Pg. Ref. No.	No.	Qty.
289-4	Coupling	11	5	1	3256-26	Washer - Flat	15	5	10
302-2	Fitting - Grease	7	1	5	3257-5	Key - Woodruff	5	24	1
302-5	Fitting - Grease	10	14	1	3269-5	Rivet - Pop	8	17	18
302-5	Fitting - Grease	1	30	2	3272-6	Pin - Cotter	12	5	4
302-5	Fitting - Grease, Straight	6	21	2	3272-11	Pin - Cotter	9	20	8
302-11	Fitting - Grease 45°	10	1	1	3272-11	Pin - Cotter	2	21	5
302-11	Fitting - Grease 45°	4	5	1	3274-7	Screw - Soc. Hd.	3	8	2
302-11	Fitting - Grease 45°	1	23	2	3274-80	Screw - Button Socket Hd.	6	15	4
302-22	Fitting - Grease	13	1	2	3290-224	Washer - Dome, Hex.	3	6	4
302-40	Fitting - Grease 90°	1	24	2	3290-322	Pin - Cotter, Hair	14	9	2
304-73	Fitting - Straight	9	15	2	3290-330	Screw - Cap Hex. Hd.	8	8	4
304-73	Fitting - Straight	11	25	1	3290-378	Cable - Tie	11	*	6
304-77	Fitting - Tee	9	14	1	3290-384	Pin - Lynch	1	1	4
321-4	Screw - Cap Hex. Hd.	11	24	5	3290-469	Nut - Grip	8	28	8
321-11	Screw - Cap Hex. Hd.	11	6	2	3296-9	Nut - Lock	8	9	4
322-7	Screw - Cap Hex. Hd.	3	19	2	3296-59	Nut - Lock	8	14	8
323-4	Screw - Cap Hex. Hd.	5	31	4	32104-82	Screw - Self Tapping	9	11	5
323-7	Screw - Cap Hex. Hd.	14	5	2	32104-82	Screw - Self Tapping	5	21	2
323-7	Screw - Cap Hex. Hd.	6	28	6	32120-42	Ring - Retaining	6	11	4
323-7	Screw - Cap Hex. Hd.	4	31	4	32128-12	Nut - Flange	3	15	2
323-10	Screw - Cap Hex. Hd.	4	9	2	32128-21	Nut - Flange	8	22	4
323-10	Screw - Cap Hex. Hd.	6	13	2	32128-21	Nut - Flange	7	8	24
323-11	Screw - Cap Hex. Hd.	4	19	1	32128-21	Nut - Flange	6	27	8
323-15	Screw - Cap Hex. Hd.	8	24	4	32128-21	Nut - Flange	9	29	1
323-15	Screw - Cap Hex. Hd.	6	26	2	32128-21	Nut - Flange	5	32	4
323-20	Screw - Cap Hex. Hd.	4	21	1	32128-21	Nut - Flange	4	33	2
324-19	Screw - Cap Hex. Hd.	1	6	9	32128-21	Nut - Flange (For Diesel)	14	1	2
325-6	Screw - Cap Hex. Hd.	15	1	2	32128-21	Nut - Lock	2	9	4
325-13	Screw - Cap Hex. Hd.	1	19	4	32128-23	Nut - Flange	1	10	8
325-14	Screw - Cap Hex. Hd.	15	4	4	32128-23	Nut - Flange	2	32	4
325-18	Screw - Cap Hex. Hd.	1	14	2	32128-25	Nut - Flange	8	20	8
325-22	Screw - Cap Hex. Hd.	1	21	2	32128-25	Nut - Flange	14	8	4
3217-7	Nut - Hex.	4	20	2	32128-25	Nut - Flange	3	13	2
3217-9	Nut - Hex.	15	6	4	32128-42	Nut - Flange	1	2	9
3218-2	Nut - Jam	3	14	4	32128-43	Nut - Flange	4	1	18
3220-3	Nut - Jam	2	18	2	32128-43	Nut - Flange	9	1	6
3230-1	Bolt - Carriage	8	18	8	32128-43	Nut - Flange	6	5	8
3230-25	Bolt - Carriage	3	12	2	32128-43	Nut - Flange	3	7	10
3231-26	Bolt - Carriage	2	10	2	32128-43	Nut - Lock	2	6	38
3231-33	Bolt - Carriage	6	2	2	32146-20	Nut - Jam	7	2	5
3231-33	Bolt - Carriage	2	14	2	32151-62	Ring - Retaining	2	25	2
3231-34	Bolt - Carriage	4	10	1	32151-83	Ring - Retaining	11	30	2
3231-36	Bolt - Carriage	2	3	38	32151-83	Ring - Retaining	11	33	2
3231-36	Bolt - Carriage	3	4	10	32152-4	Nut - Flange	11	11	7
3231-36	Bolt - Carriage	7	5	24	340-1	Fitting - Straight	11	12	2
3231-36	Bolt - Carriage	4	16	10	340-2	Fitting - Straight	11	21	2
3231-36	Bolt - Carriage	9	25	6	340-77	Fitting - Elbow 90°	11	16	1
3231-36	Bolt - Carriage	5	29	4	340-82	Fitting - Elbow 90°	9	18	2
3233-9	Bolt - Carriage	2	29	4	340-114	Fitting - Union	11	34	1
3247-4	Screw - Set	5	28	2	353-974	Fitting - Cross	11	4	1
3250-31	Screw	12	16	4	353-982	Fitting - Elbow 90°	11	17	1
3253-7	Washer - Lock	15	2	6	353-983	Fitting - Straight	9	6	1
3253-17	Washer - Lock	12	28	4	353-983	Fitting - Straight	11	26	1
3253-21	Washer - Lock	5	30	4	353-984	Plug - Dust	9	8	1
3256-24	Washer - Flat	7	6 A/R		353-984	Plug - Dust	11	32	2
3256-24	Washer - Flat	6	12	10	353-985	Cap - Dust	9	10	2
3256-24	Washer - Flat	4	26	5	353-985	Cap - Dust	11	29	1

*Not Illustrated

