



Center, Right-Hand and Left-Hand Replacement Mowers

Groundsmaster® 5900/5910 Traction Unit

Model No. 31591

Model No. 31592

Model No. 31593

Installation Instructions

Removing the Center Cutting Unit

1. Position machine on a clean, level surface. Lower cutting unit, stop engine, apply parking brake and remove key from the ignition switch.
2. Remove cutting unit center cover to access hydraulic deck motor.
3. Remove the bolts securing the hydraulic motor to the cutting unit (Figure 1). Lift the motor off of the cutting unit and position it away from the cutting unit.

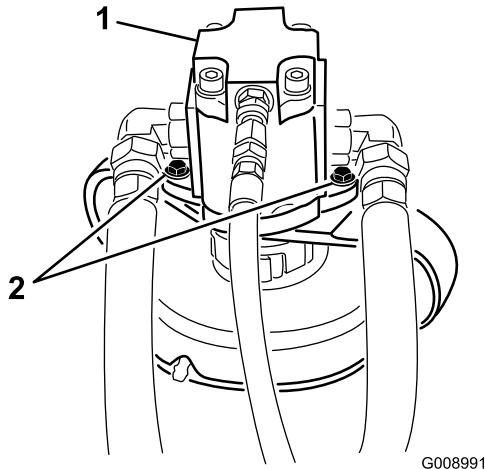


Figure 1

1. Hydraulic motor
2. Mounting bolts

5. Remove the hairpin cotter and clevis pin securing the height-of-cut chains to the rear of the cutting unit (Figure 2).

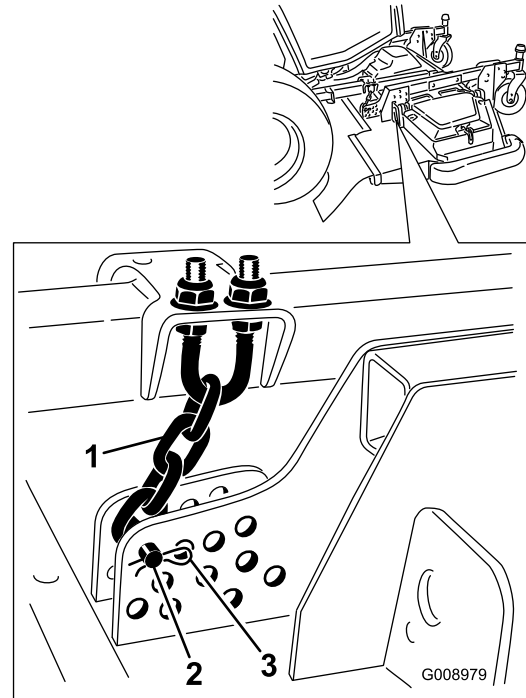


Figure 2

1. Height of cut chain
2. Clevis pin
3. Hair pin cotter

4. Start the engine and raise the cutting unit enough to allow the castor wheels to rotate freely then stop the engine. Remove the key from the ignition switch.

6. Remove the retainer clip and disconnect the damper assembly from the cutting unit (Figure 3).

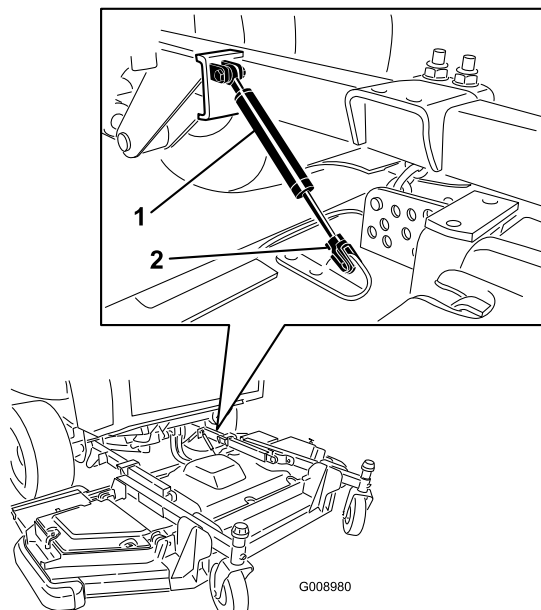


Figure 3

1. Damper assembly
2. Retainer clip

7. Insert the key into the ignition, turn it to the run position, lower the cutting unit and turn the key to the off position. Remove the key from the ignition switch.
8. Remove the cap screws, flat washers, plate and lock nuts that secure the lift arm support hubs to the cutting unit (Figure 4). Remove the thrust washer from between the lift arm and the rear, slotted hole in the support hub.

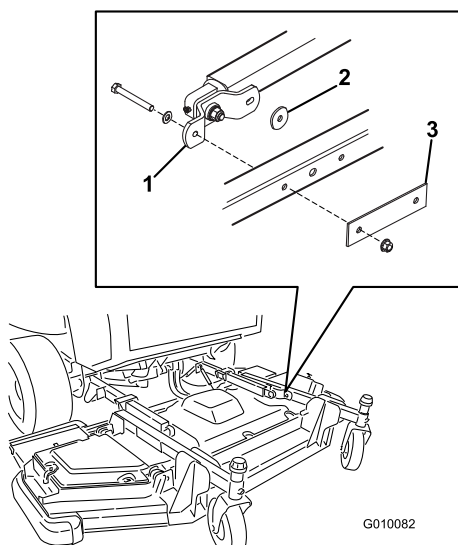


Figure 4

1. Lift arm support hub
2. Thrust washer
3. Plate

9. Slide the cutting unit away from the traction unit.

Installing the Center Cutting Unit

1. Position the machine on a level surface, stop the engine, engage the parking brake and remove the key from the ignition.
2. Position the cutting unit to the lift arms (Figure 4).
3. Insert the key into the ignition.
4. To lower the lift arm, turn the key switch to the run position and actuate the lower switch to place into float mode (someone must remain in seat to maintain float mode).
5. Push down on the lift arm until the support hub aligns with the cutting unit. Make sure that the slotted hole in the support hub is toward the rear of the cutting unit (Figure 4).
6. Turn key switch off and remove key from ignition.
7. Place thrust washer between the lift arm and the rear, slotted hole in the support hub (Figure 4).
8. Secure lift arm support hub to deck with cap screws, flat washers, plate and lock nuts. Torque fasteners to 94 to 116 ft-lb (128 to 157 N-m).
9. Start the engine and raise the cutting unit enough to allow the castor wheels to rotate freely then stop the engine. Remove the key from the ignition switch.
10. Install clevis pins and hairpins that secure the height-of-cut chains to the rear of the cutting unit (Figure 2).
11. Position damper to mount on cutting unit. Install spacer and spring pin to secure damper to cutting unit (Figure 3).
12. Turn the key to the run position, lower the cutting unit and turn the key to the off position.
13. Install the hydraulic motor to cutting unit with the bolts previously removed (Figure 1).
14. Lubricate all the grease fittings on the cutting deck and lift arm assemblies (see Operator's Manual).
15. Install all removed cutting deck covers.

Removing the Side Cutting Units

1. Position the machine on a level surface, lower cutting unit, stop the engine, engage the parking brake and remove the key from the ignition.
2. Remove cutting unit outer cover to access hydraulic deck motor.
3. Remove (3) hose guides from cutting unit (Figure 5). The (2) guides, around the hoses, can stay on the hydraulic hoses.

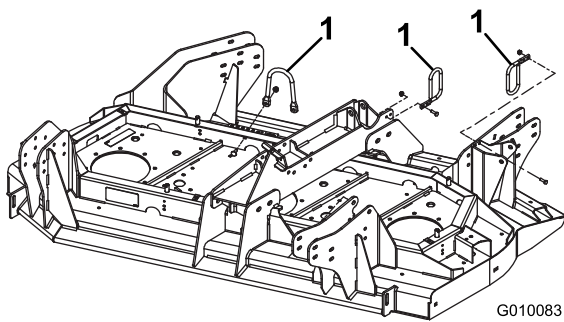


Figure 5

1. Hose guide

4. Remove the bolts securing the hydraulic motor to the cutting unit (Figure 6). Lift the motor off of the cutting unit and position it away from the cutting unit.

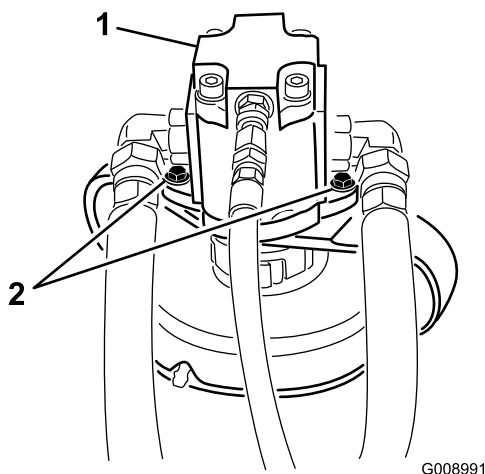


Figure 6

1. Hydraulic motor
2. Mounting bolts

5. Remove (8) flange head screws and lock nuts that secure deck connection to cutting unit (Figure 7).

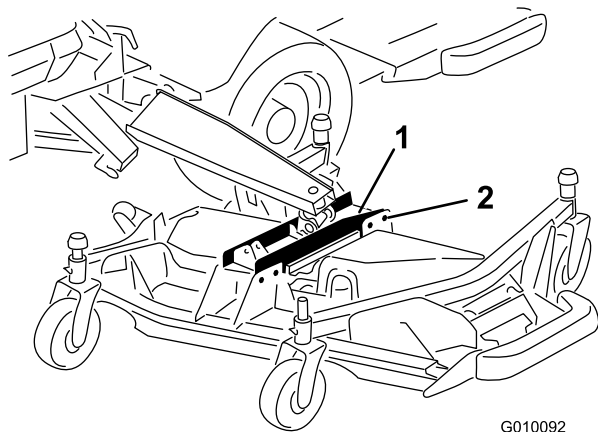


Figure 7

1. Deck connection
2. Mounting bolts (8)

6. Raise lift arm enough to separate deck connection from cutting unit.
7. Slide the cutting unit away from the traction unit.

Installing the Side Cutting Units

1. Position the machine on a level surface, stop the engine, engage the parking brake and remove the key from the ignition.
2. Position the side cutting unit to the raised lift arm.
3. Insert the key into the ignition.
4. To lower the lift arm, either start the engine and lower with the switch shutting off the engine while holding the switch in the lower position or turn the key to run and hold lower switch while pulling down on lift arm.
5. Lower lift arm while aligning deck connection to cutting unit.
6. Turn key switch off and remove key from ignition.
7. Install deck connection to cutting unit with (8) flange head screws and lock nuts (Figure 7).
8. Install the hydraulic motor to cutting unit with the bolts previously removed (Figure 6).
9. Position and secure the three (3) hose guides to cutting unit (Figure 5).
10. Lubricate grease fittings on cutting unit and lift arm assemblies (see Operator's Manual).
11. Install all removed cutting unit covers.



Count on it.