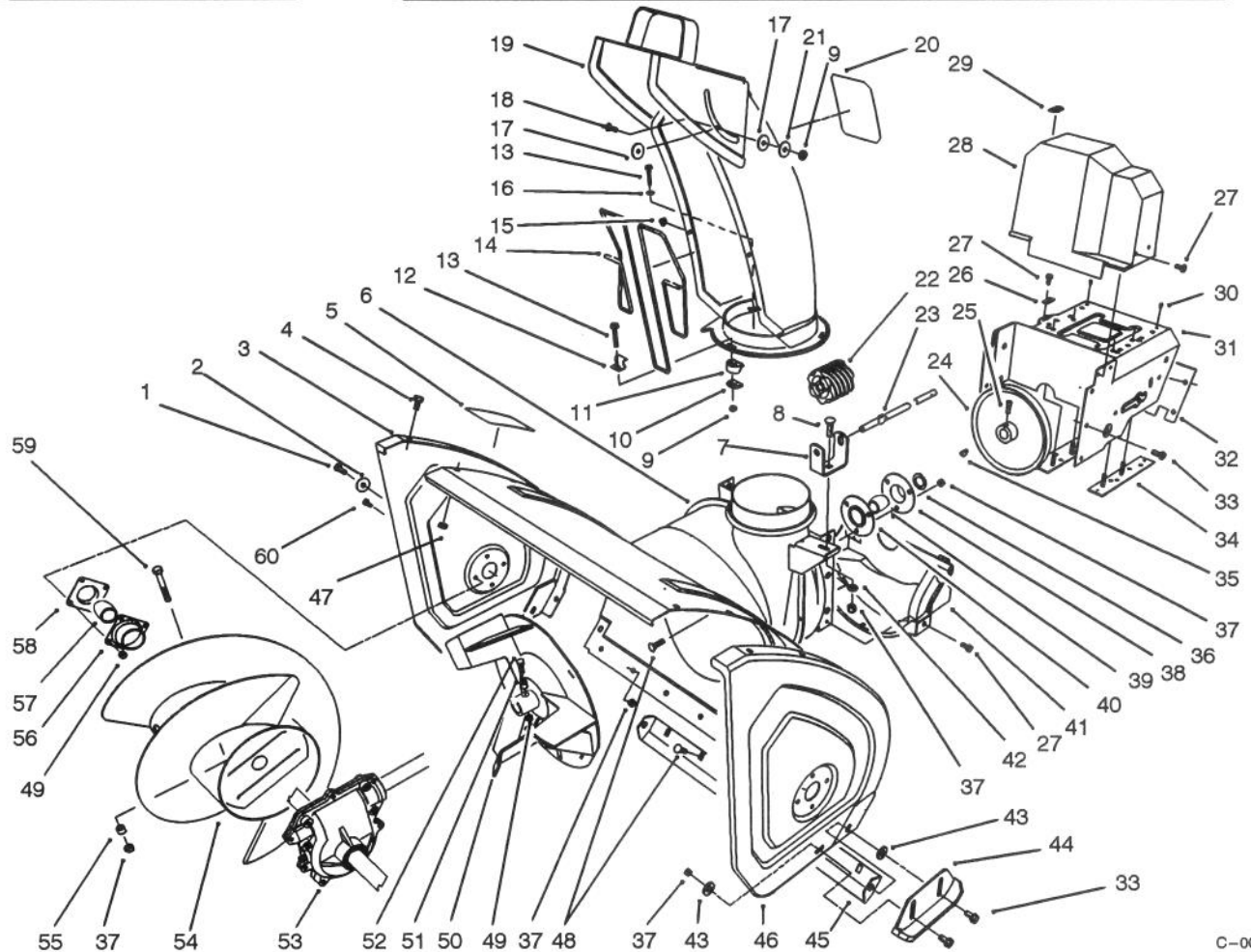


**TORO**<sup>®</sup>

MODEL NO. 38555-390001 &amp; UP

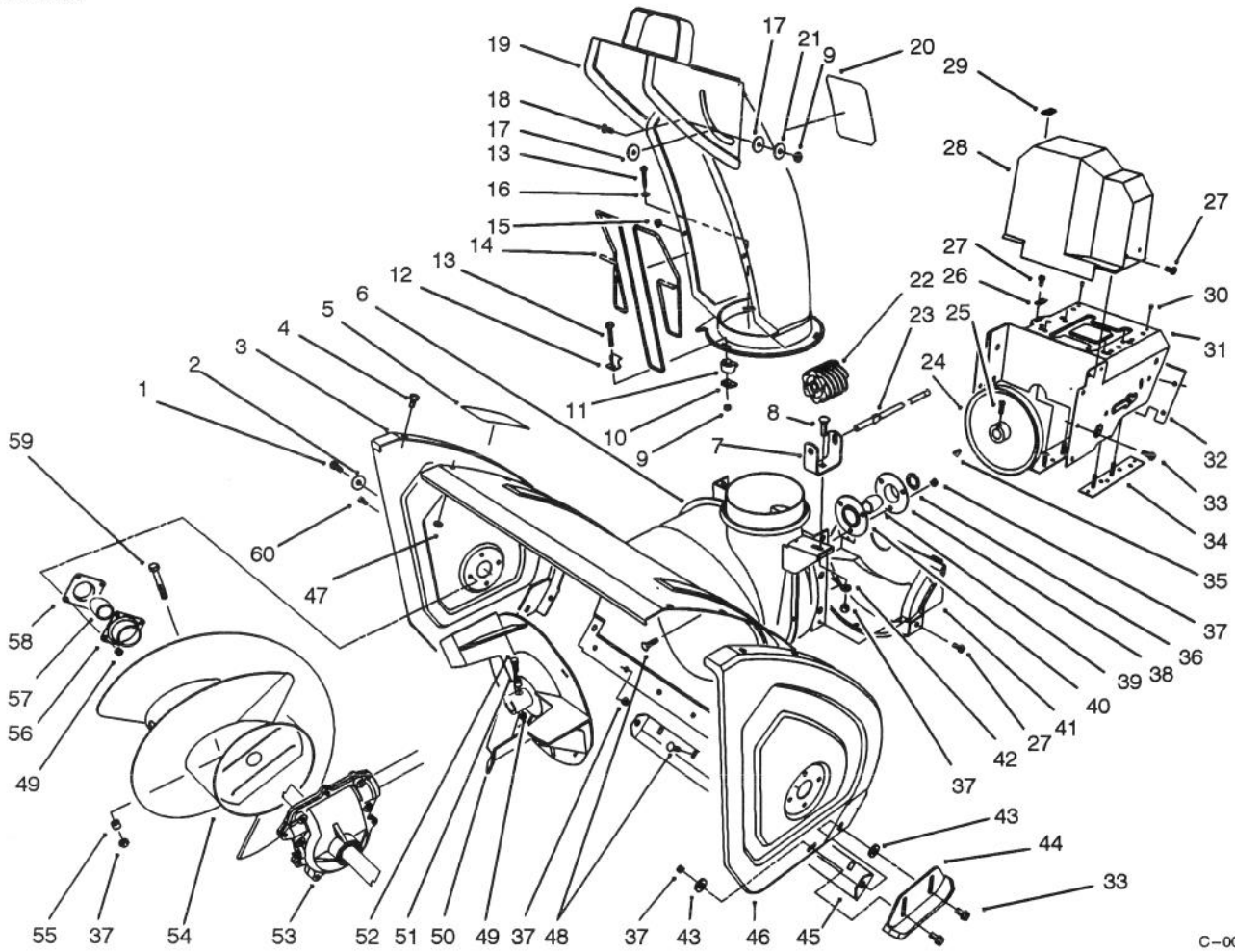
**PARTS  
CATALOG****1028 SNOWTHROWER**

C-0045

**HOUSING & CHUTE ASSEMBLY**

Ref. No.	Part No.	Description	No. Used
1	323-6	Screw - Hex Hd.	2
2	3-0750	Washer - Retaining	2
3	66-7821	Plate - Side R.H.	1
4	3234-28	Screw - Hex Flange Hd.	12
5	53-7670	Decal - Danger Auger	1
6	62-0721	Housing - 28"	1
7	63-2180	Bracket - Gear	1
8	3230-2	Bolt - Carriage	1
9	3296-2	Nut - Lock	4
10	63-2670	Plate - Chute Retainer	3
11	62-1430	Retainer - Chute	3
12	63-3130	Clip - Chute Guard	1
13	3274-13	Screw - Machine	3
14	63-3020	Guard - Chute	1
15	3290-326	Nut - Push	2
16	3256-14	Washer - Flat	3

Ref. No.	Part No.	Description	No. Used
17	63-2900	Washer - Plastic	2
18	32122-32	Screw	1
19	62-0840	Chute Assembly	1
20	53-7660	Decal - Danger Chute	1
21	3256-61	Washer - Flat	1
22	62-0820	Gear - Worm	1
23	62-1720	Rod - Chute Gear	1
24	62-1300	Pulley - Impeller	1
25	3242-4	Screw - Set Sq. Hd.	2
26	63-2300	Retainer - Cable	1
27	32144-4	Screw - Hex Flange Hd.	6
28	63-2080	Cover - Belt (Upper)	1
29	63-3290	Cover - Cable	1
30	3269-23	Rivet	4
31	66-6980	Frame - Engine	1
32	62-1440	Cover - Engine Frame	1

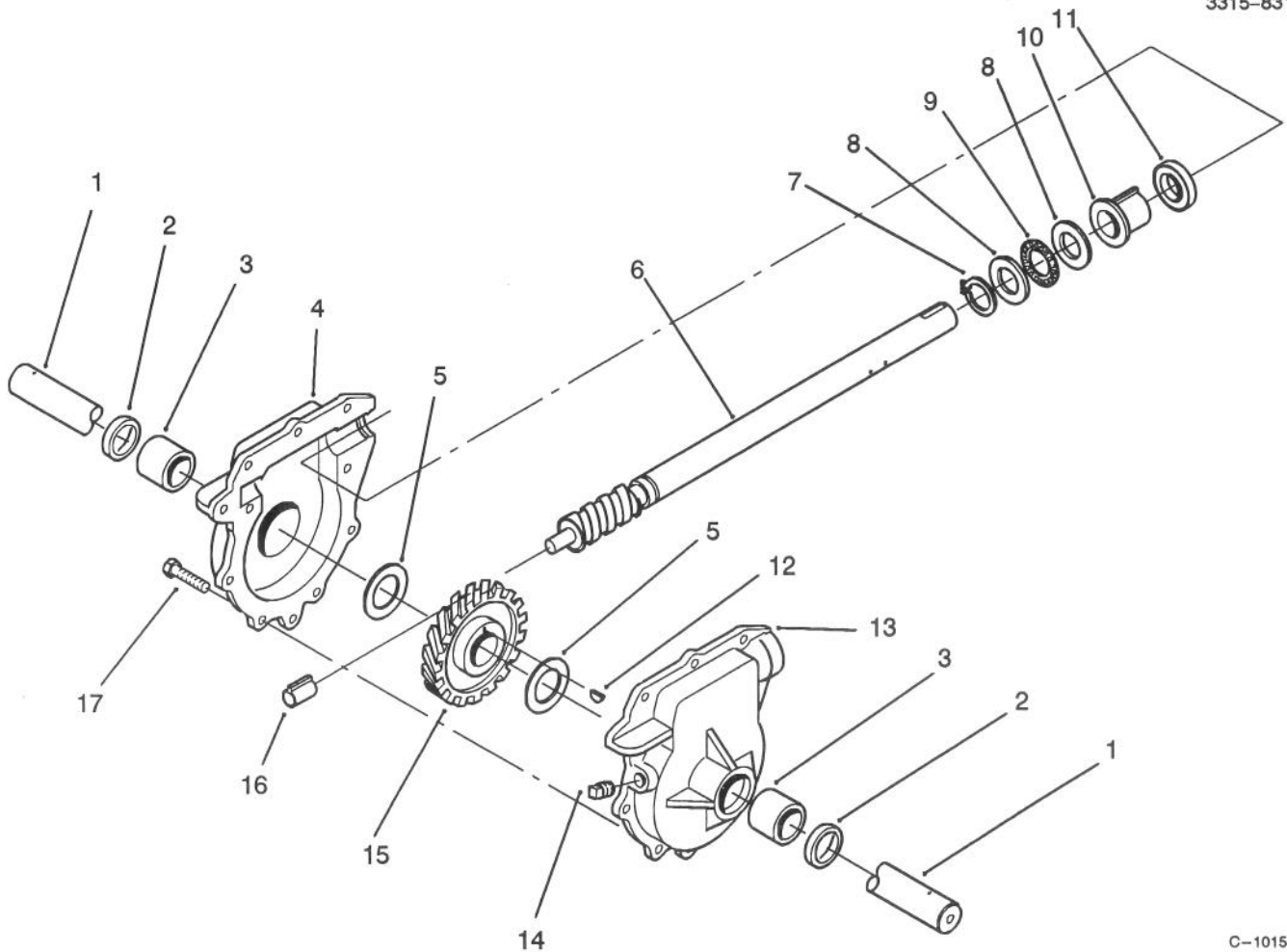


C-0045

## HOUSING ASSEMBLY (Continued)

Ref. No.	Part No.	Description	No. Used	Ref. No.	Part No.	Description	No. Used
33	3234-5	Screw - Hex. Washer Hd.	10	49	3296-42	Nut - Lock	10
34	68-4110	Plate - Engine Stud L.H.	1	50	66-7920	Impeller	1
*	68-4100	Plate - Engine Stud R.H.	1	51	66-8010	Spacer	2
35	3257-23	Key - Woodruff	1	52	321-44	Screw - Hex. Hd.	2
36	252-80	Washer - Thrust	1	53	74-1561	Auger Gearbox Assembly	1
37	3296-29	Nut - Lock	12	54	68-7451	Auger - R.H.	1
38		Flange - Bearing (Rear)	1	*	68-7461	Auger - L.H.	1
39	63-3450	Bearing - Impeller	1	55	25-5090	Spacer - Auger Hub	2
40		Flange - Bearing (Front)	1	56	20-0990	Flange - Bearing (Inner)	2
41	68-8410	Cover - Belt (Lower)	1	57	20-0980	Bearing - Auger	2
42	3256-23	Washer - Flat	1	58	20-1000	Flange - Bearing (Outer)	2
43	52-2861	Washer	4	59	17-7030	Bolt - Auger	2
44	74-1440	Skid Assembly	2	60	321-3	Screw - Hex Hd.	8
45	66-7761	Blade - Scraper	1	*	12-8789	Impeller Bearing Assembly (Incl. Ref. #38-40)	1
46	66-7831	Plate - Side L.H.	1	*	12-8949	Loose Parts	1
47	3296-47	Nut - Lock	12				
48	3230-23	Screw - Carriage	10				

\*Not Illustrated

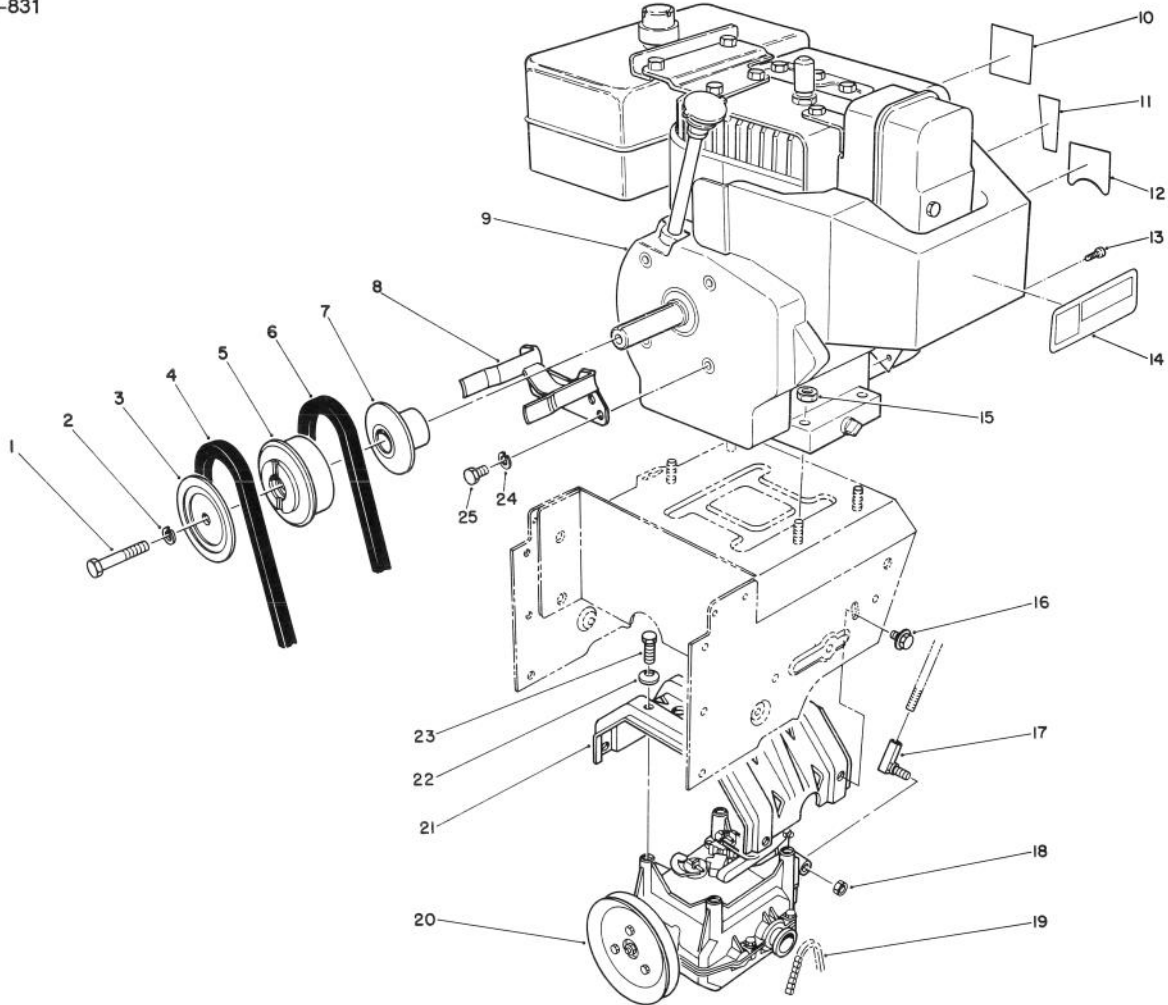


C-1015

## 28" AUGER GEARCASE ASSEMBLY NO. 74-1561

Ref. No.	Part No.	Description	No. Used	Ref. No.	Part No.	Description	No. Used
1	62-1531	Shaft - Auger (28")	1	10	37-6560	Bushing - Input	1
2	7-0045	Seal - Oil	2	11	253-149	Seal - Input	1
3	256-237	Bushing - Sleeve	2	12	3257-10	Key - Woodruff	1
4	74-1580	Gearcase Assembly - R.H. (Incl. Ref. # 2-3)	1	13	74-1570	Gearcase Assembly - L.H. (Incl. Ref. # 2-3)	1
5	252-71	Bearing - Thrust	2	14	281-1	Plug - Pipe Sq. Hd.	1
6	66-7811	Shaft - Impeller	1	15	62-0120	Gear - Helical	1
7	32151-33	Ring - Snap	1	16	62-1150	Bushing - Worm	1
8	252-78	Washer - Thrust	2	17	32144-110	Screw - Hex Washer Hd.	9
9	252-76	Bearing - Thrust	1	*	505-129	Sealant - 100g Tube	1

\*Not Illustrated



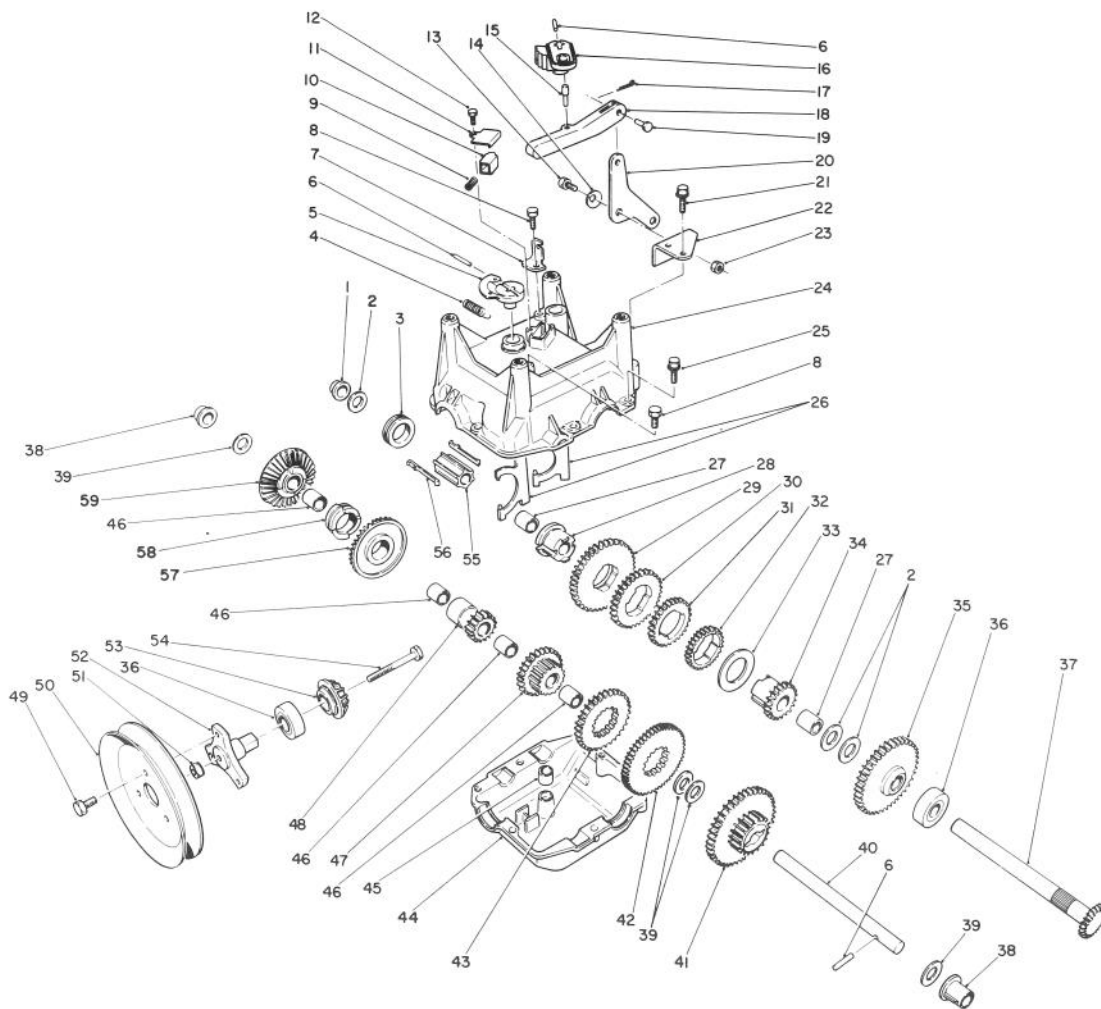
C-0048

## ENGINE ASSEMBLY

Ref. No.	Part No.	Description	No. Used
1	3212-8	Screw - Hex. Hd.	1
2	3253-6	Washer - Lock	1
3	62-0940	Sheave Half - Impeller	1
4	63-2962	Belt - Impeller	1
5	62-0930	Hub - Sheave	1
6	63-2951	Belt - Traction	1
7	62-0920	Sheave Half - Traction	1
8	68-7510	Guide - Belt	1
†9		Engine - Tecumseh Model HMSK100-159227S	1
10	62-5760	Decal - Primer	1
11	63-3190	Decal - Throttle	1
12	63-2410	Decal - Choke	1

Ref. No.	Part No.	Description	No. Used
13	32144-4	Screw	1
14	63-2310	Decal - Hot Surface	1
15	32128-20	Nut - Lock	4
16	3234-7	Screw - Hex Flange Hd.	4
17	63-2640	Joint - Ball	1
18	3296-39	Nut - Lock	1
19	63-2930	Chain - Drive	1
20	66-8030	Transmission Assembly	1
21	63-2990	Frame - Transmission	1
22	3290-461	Washer - Belleville	4
23	11-0590	Screw - Hex Hd.	4
24	3253-4	Washer - Lock	2
25	3210-1	Screw - Hex Hd.	2

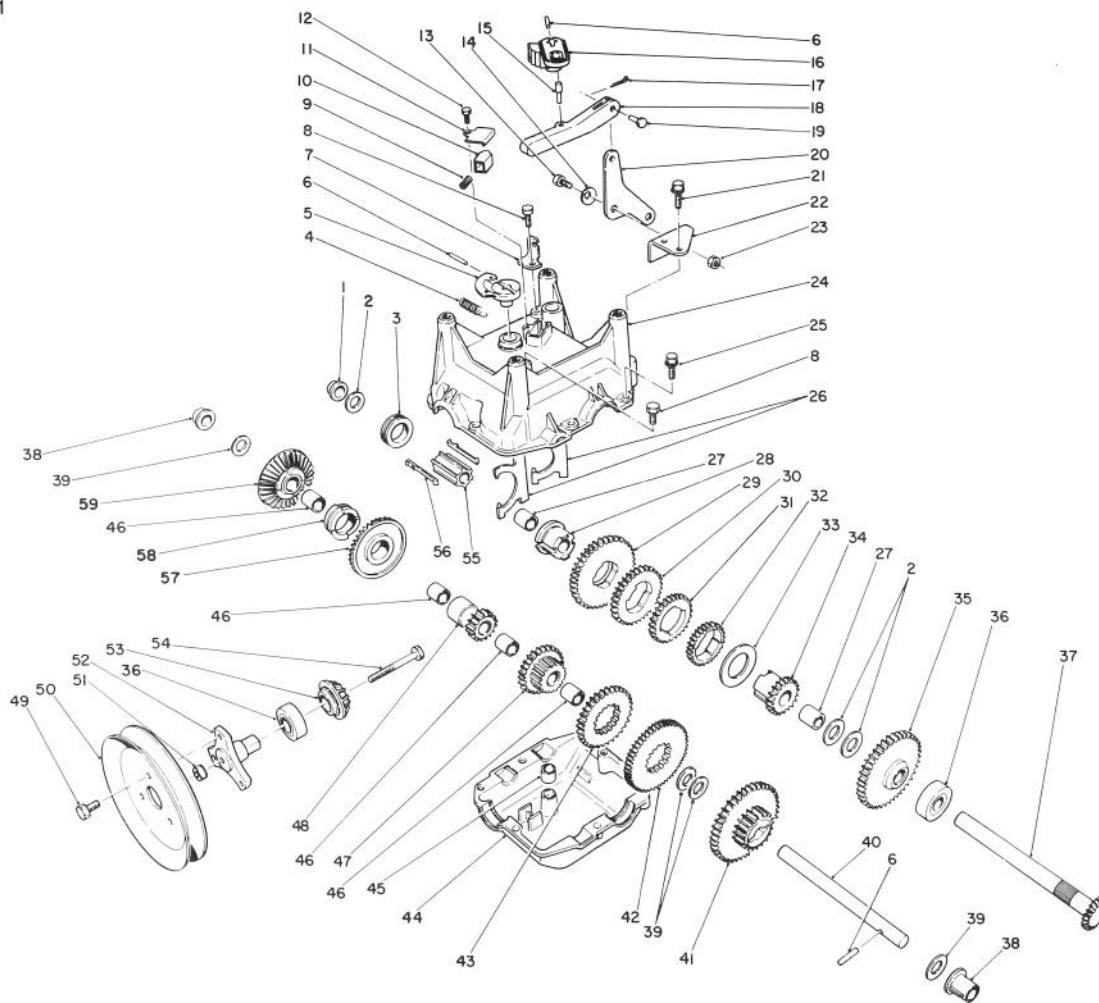
†Obtain from your local Tecumseh Dealer.



C-0052

## TRANSMISSION ASSEMBLY NO. 66-8030

Ref. No.	Part No.	Description	No. Used	Ref. No.	Part No.	Description	No. Used
1	62-1180	Bushing - Output (Flange)	1	22	62-1190	Bracket - Bellcrank	1
2	252-59	Washer - Thrust	3	23	3296-42	Nut - Lock	1
3	62-0430	Collar - Shift (Speed)	1	24	62-0490	Gear Case - Upper	1
4	63-2920	Spring - Extension (F/R Return)	1	25	32144-86	Screw - Hex Washer Hd.	6
5	62-0880	Lever - Direction Shift	1	26	62-1040	Yoke-Shift	2
6	32121-106	Pin - Coil	3	27	62-1350	Bushing - Output	2
7	62-1740	Bracket - Cable	1	28	62-0320	Sleeve	1
8	32144-4	Screw - Self Tapping	2	29	62-0240	Gear - 45T	1
9	63-2890	Spring - Compression (Detent)	1	30	62-0220	Gear - 34T	1
10	62-1020	Button - Detent	1	31	62-0200	Gear - 27T	1
11	62-1690	Cover - Detent	1	32	62-0250	Gear - 29T	1
12	32104-71	Screw - Pan Hd.	1	33	63-2280	Washer - Thrust	1
13	63-3410	Bolt - Shoulder	1	34	62-0340	Sleeve - Gear 19T	1
14	3290-477	Washer - Curved	1	35	62-0370	Gear - 41T	1
15	63-2190	Pin - Gearshift Link	1	36	38-7820	Bearing - Ball	2
16	62-0870	Lever - Gear Shift	1	37	62-1080	Shaft - Output	1
17	3272-1	Pin - Cotter	1	38	62-1170	Bushing - Flange	2
18	62-0860	Link - Gearshift	1	39	257-10	Washer - Thrust	4
19	283-3	Pin - Clevis	1	40	62-0330	Shaft - Intermediate	1
20	63-2600	Bellcrank	1	41	62-0360	Gear - Compound 19T/41T	1
21	32104-95	Screw - Hex Washer Hd.	2	42	62-0260	Gear - 51T	1
				43	62-0210	Gear - 33T	1
				44	62-0480	Gear Case - Lower	1



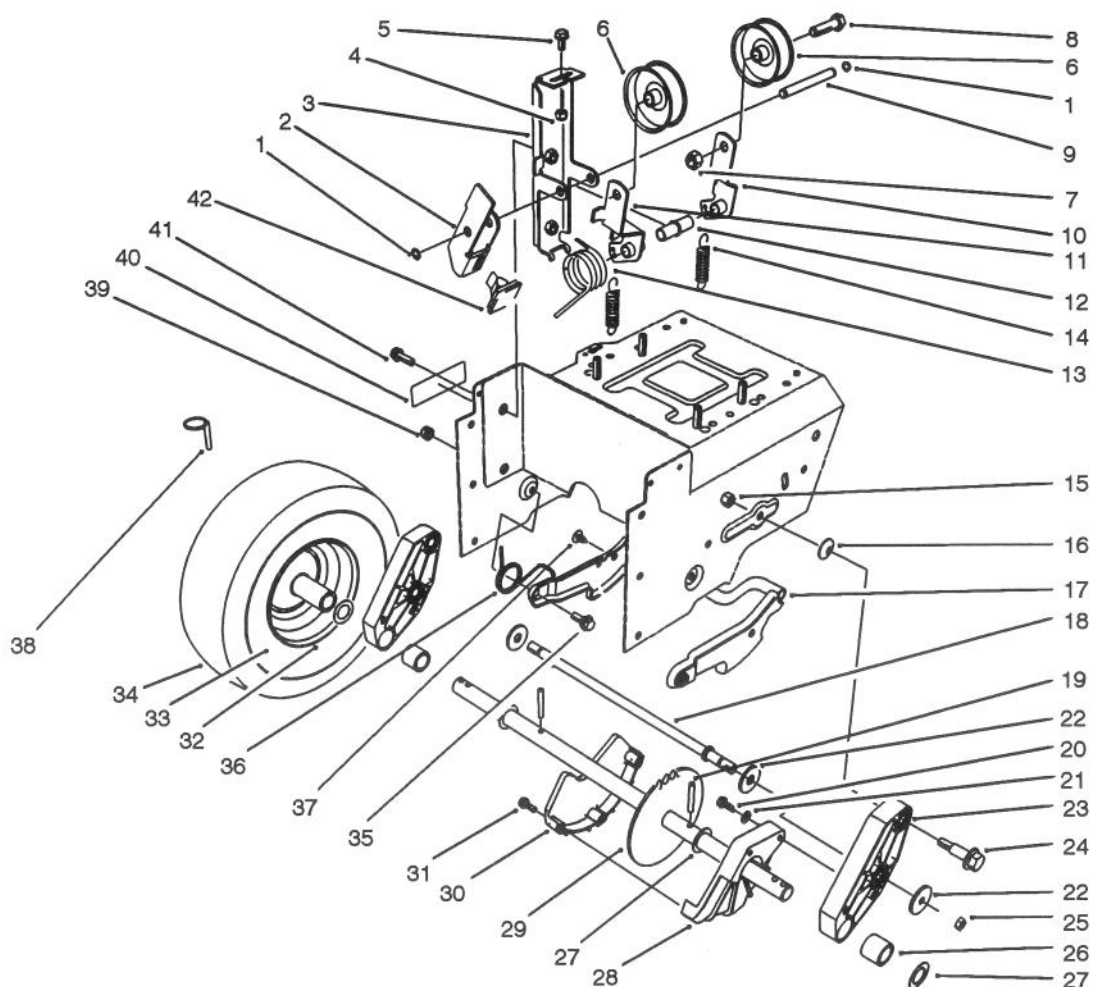
C-0052

## TRANSMISSION ASSEMBLY NO. 66-8030 (Continued)

Ref. No.	Part No.	Description	No. Used
45	29-9570	Bushing - Yoke	1
46	62-1160	Bushing - Intermediate	4
47	68-4310	Gear - 26T	1
48	62-0500	Gear - 15T	1
49	12-3270	Screw	3
50	62-1310	Pulley - Traction	1
51	32128-32	Nut - Flange Lock	1
52	62-0380	Hub - Pulley	1
53	62-0350	Pinion - Bevel 19T	1

Ref. No.	Part No.	Description	No. Used
54	321-15	Screw - Hex Hd.	1
55	68-4320	Sleeve - Shift	1
56	62-0310	Key - Shift	2
57	67-5870	Gear - Bevel 36T	1
58	67-5880	Collar - Shift	1
59	13-3559	Gear - Bevel Reverse 36T (Incl. Ref. #46)	1
*	505-101	Grease - 14.5 oz. Cartridge	1

\*Not Illustrated

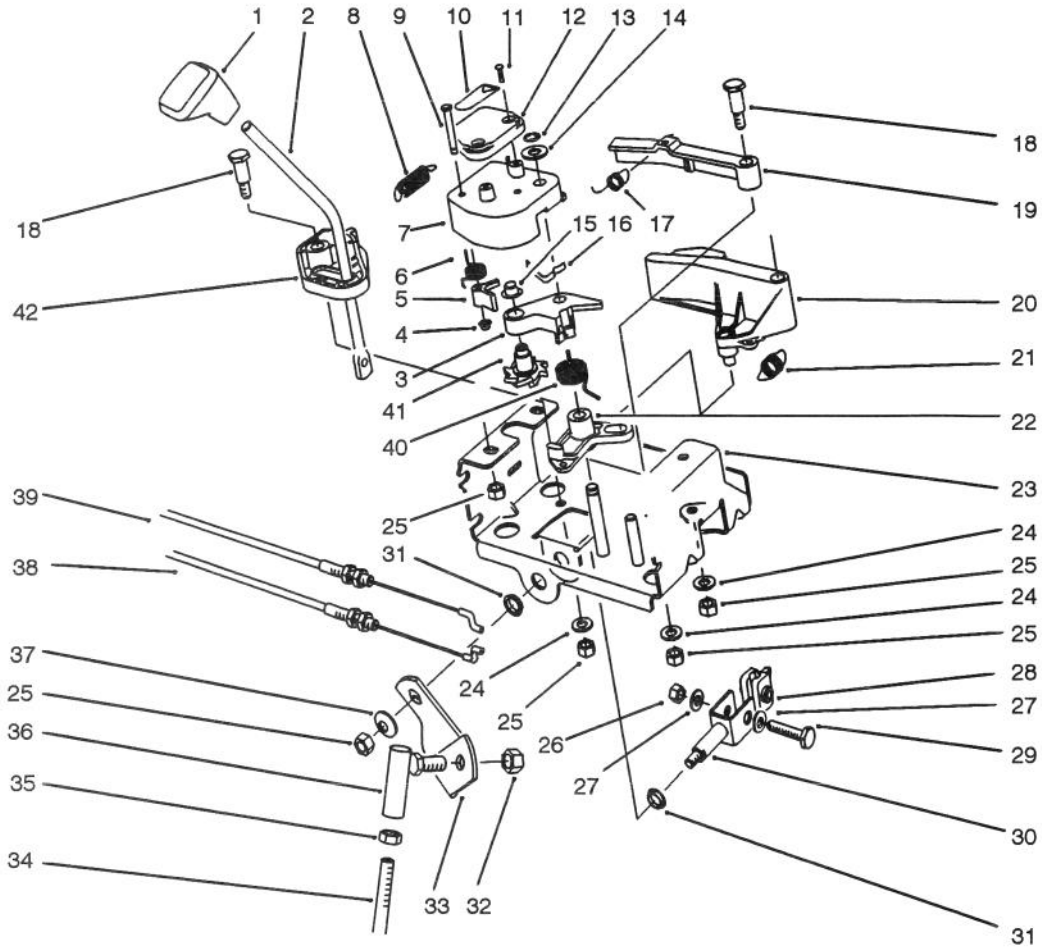


C-0053

## TRACTION DRIVE ASSEMBLY

Ref. No.	Part No.	Description	No. Used	Ref. No.	Part No.	Description	No. Used
1	32120-46	Ring - Retaining	2	24	62-1330	Bolt - Shoulder	2
2	63-2820	Arm - Brake	1	25	3296-23	Nut - Lock	2
3	63-2850	Bracket - Idler Arm	1	26	63-2250	Bushing - Axle	2
4	3296-42	Nut - Lock	1	27	252-80	Washer - Thrust	4
5	3234-13	Screw - Hex. Hd.	1	28	62-1010	Guard - Chain L.H.	1
6	3-4244	Pulley - Idler	2	29	63-2112	Axle Assembly	1
7	3296-59	Nut - Lock	2	30	62-1000	Guard - Chain R.H.	1
8	323-7	Screw - Hex Hd.	2	31	32104-121	Screw - Hex Flange Hd.	3
9	62-0970	Pin - Idler	1	32	241-127	Rim - Wheel	2
10	62-1260	Arm - Traction Idler	1	33	232-48	Tube - Inner	2
11	62-1280	Arm - Impeller Idler	1	34	231-123	Tire	2
12	62-1210	Bushing - Idler	1	35	5-2490	Bolt - Shoulder	2
13	63-2881	Spring - Torsion	1	36	63-2740	Spring - Torsion	1
14	63-2870	Spring - Extension	2	37	3290-476	Fastener - Panel	1
15	3296-39	Nut - Lock	2	38	3290-243	Pin - Klik	2
16	3290-461	Washer - Belleville	2	39	3296-47	Nut - Lock	2
17	62-0470	Latch - Arm	1	40	63-3470	Decal - Warning	1
18	66-7720	Rod - Latch	1	41	3234-7	Screw - Hex Flange Hd.	2
19	32121-9	Pin - Roll	2	42	66-8060	Pad - Brake	1
20	32144-4	Screw - Hex Flange Hd.	2	*	63-3040	Tire Chains Kit (Optional)	1
21	3256-1	Washer - Flat	2	*	66-6820	Spacer - Tire Chain	2
22	63-3340	Washer	4	*		Wheel & Tire Assembly (Incl. Ref. #32-34)	2
23	66-7740	Pivot Arm Assembly (Incl. Ref. # 26)	2	*	74-1190	Kit - Weight (Optional)	1

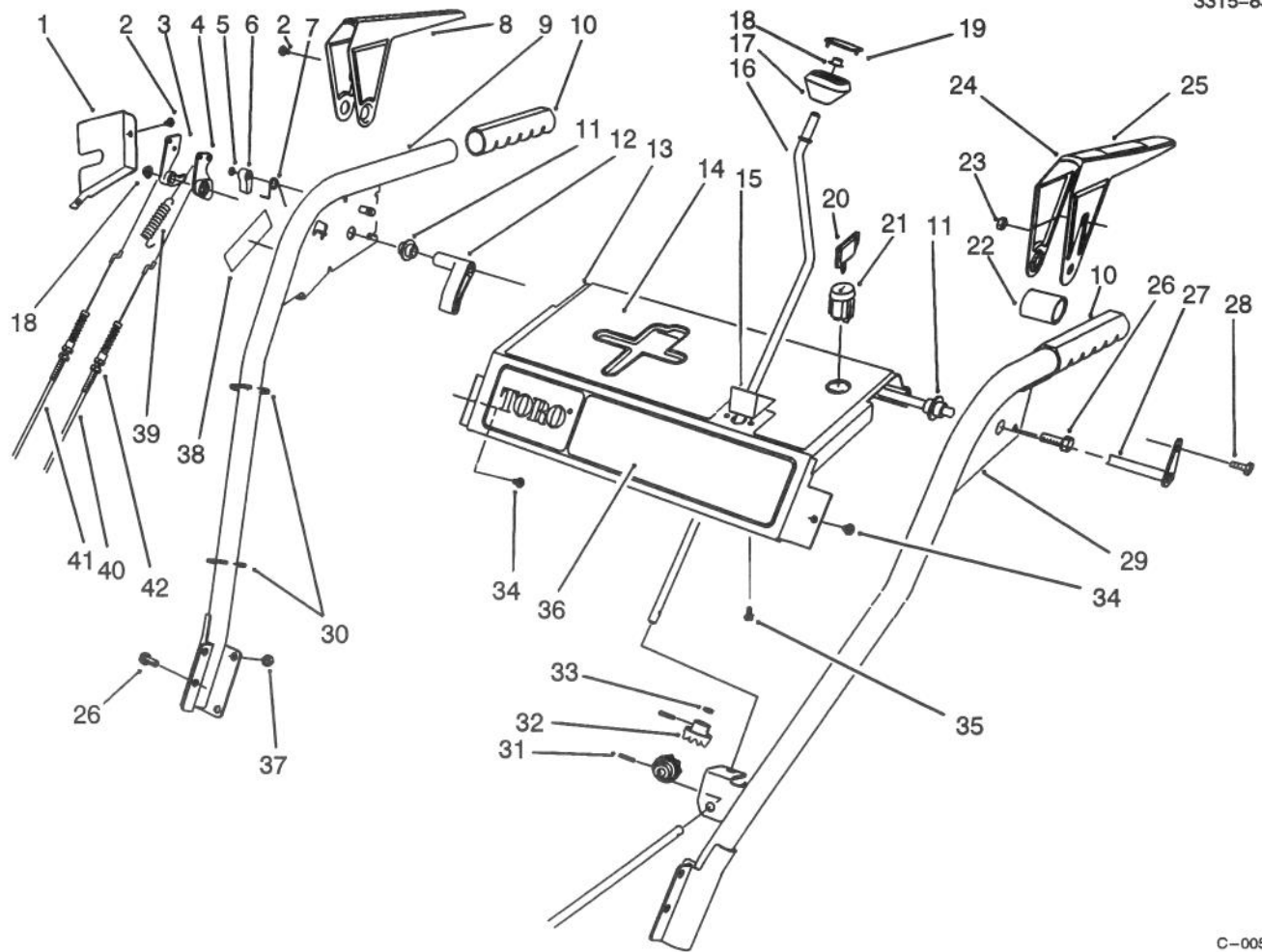
\*Not Illustrated



C-0054

## TRACTION LINKAGE ASSEMBLY

Ref. No.	Part No.	Description	No. Used	Ref. No.	Part No.	Description	No. Used
1	62-1290	Knob - Shift	1	22	62-1120	Lever - Reverse	1
2	67-9240	Rod - Shift (Upper)	1	23	63-2150	Frame - Control	1
3	62-1110	Lever - Index Wheel	1	24	3256-23	Washer - Flat	3
4	3290-422	Nut - Push	1	25	3296-29	Nut - Lock	7
5	62-0180	Tang - Index	1	26	3296-42	Nut - Lock	1
6	62-1650	Spring - Torsion	1	27	3256-1	Washer - Flat	2
7	62-1100	Lever - Latch	1	28	67-9250	Retainer - Shift Rod	1
8	63-2220	Spring - Extension	1	29	321-9	Screw - Cap Hex. Hd.	1
9	63-2610	Pin - Tang	1	30	66-7730	Clevis	1
10	63-2480	Decal - #2	1	31	256-296	Bushing - Nyliner	2
11	32104-118	Screw - Pan Hd.	2	32	3296-39	Nut - Lock	1
12	62-1140	Cover - Latch	1	33	63-2630	Bracket - Shift	1
13	32120-46	Ring - Retaining	1	34	63-2830	Rod - Shift (Lower)	1
14	257-9	Washer - Thrust	1	35	3220-3	Nut - Jam	2
15	3290-320	Nut - Push	1	36	63-2640	Joint - Ball	1
16	62-1710	Spring - Flat	1	37	3290-456	Washer - Belleville	1
17	63-2240	Spring - Extension	1	38	63-2210	Cable - Gearbox	1
18	63-2650	Screw - Shoulder	2	39	63-2200	Cable - Latch	1
19	62-1700	Lever - Lockout	1	40	63-2270	Spring - Torsion	1
20	62-1130	Lever - Reverse	1	41	62-0170	Wheel - Index	1
21	63-2230	Spring - Extension	1	42	62-1470	Base - Lockout	1

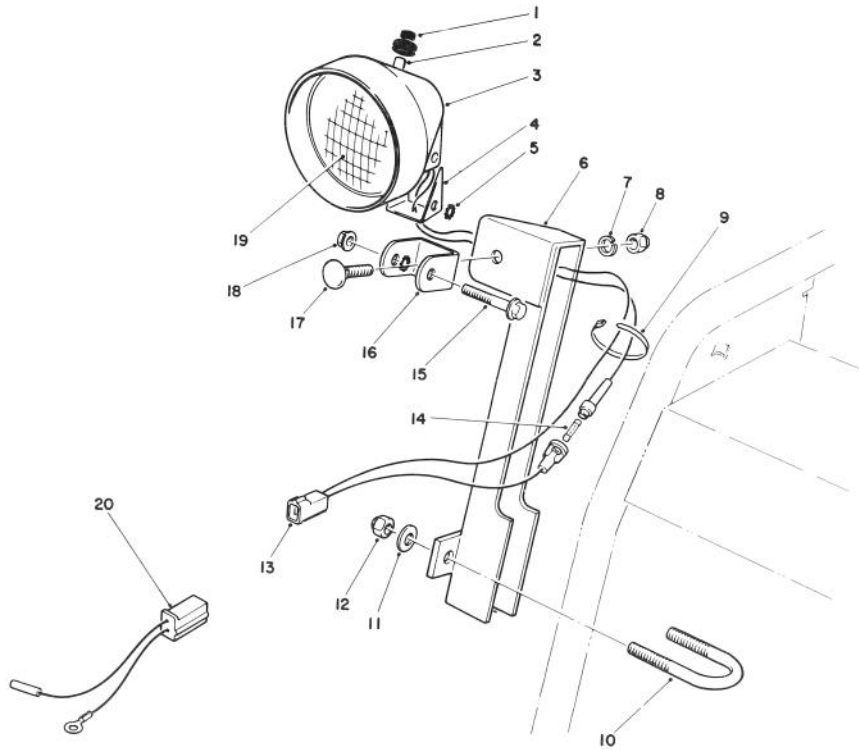


C-0055

## HANDLE ASSEMBLY

Ref. No.	Part No.	Description	No. Used	Ref. No.	Part No.	Description	No. Used
1	63-2170	Cover - Lever Lock	1	23	3296-2	Nut - Lock	1
2	2210-250	Screw	3	24	62-1060	Lever - Traction	1
3	62-0300	Tang - Locking	1	25		Decal - Lever	1
4	62-0290	Cam - Release	1	26	3234-7	Screw - Hex Flange Hd.	6
5	32151-66	Ring - Retaining	1	27	63-2030	Rod - Cross	1
6	62-0280	Latch - Lock	1	28	3290-359	Screw	1
7	63-2910	Spring - Torsion	1	29	66-8091	Handle - L.H.	1
8	62-1050	Lever - Impeller	1	30	3290-378	Tie - Cable	3
9	62-1381	Handle - R.H.	1	31	32121-50	Pin - Roll	2
10	66-7850	Handlegrip	2	32	62-1460	Gear - Universal	2
11	62-1070	Bushing - Lever	2	33	62-1230	Washer - Rubber	1
12	62-1640	Lever - Trip	1	34	32104-76	Screw - Self Tapping	2
13	66-8100	Panel - Control	1	35	32104-118	Screw - Pan Hd.	2
14	63-2550	Decal - Panel Top	1	36	88-0590	Decal - Panel Front	1
15	62-1490	Plate - Guide	1	37	3296-47	Nut - Lock	4
16	63-2160	Rod - Chute Crank	1	38	63-3470	Decal - Warning	1
17	62-1320	Knob - Chute Control	1	39	88-0810	Spring - Extension	1
18	3290-320	Nut - Push	3	40	63-2710	Cable - Traction	1
19	62-1520	Cover - Knob	1	41	63-2700	Cable - Impeller	1
20	63-8360	Key - Switch	1	42	3296-42	Nut	4
21	40-5940	Switch - On/Off	1	*	63-3420	Harness - Wire	1
22	63-3380	Spacer - Traction Lever	1				

\*Not Illustrated



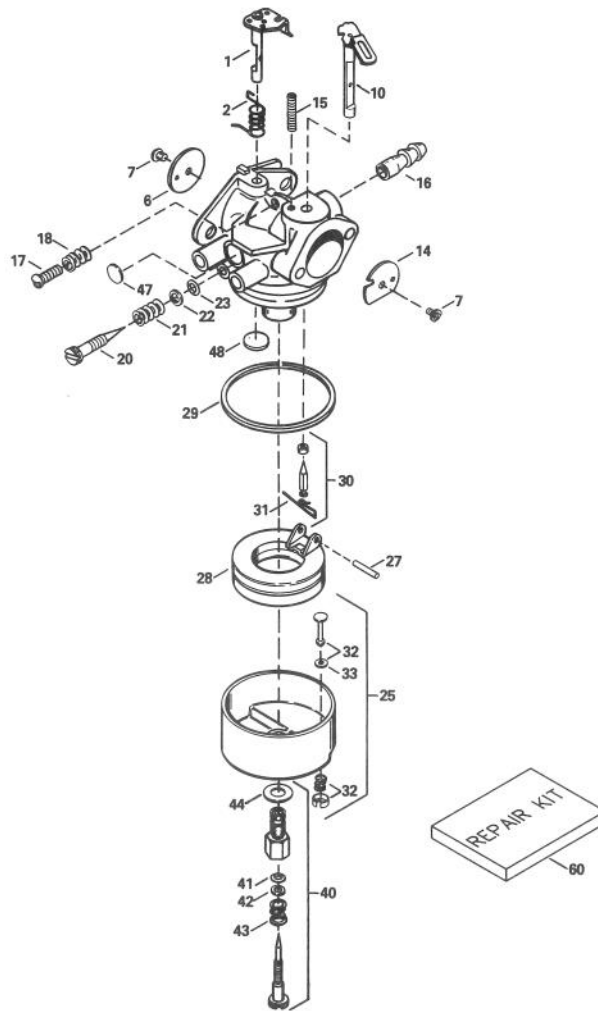
C-0071

## LIGHT ASSEMBLY NO. 66-7940

Ref. No.	Part No.	Description	No. Used	Ref. No.	Part No.	Description	No. Used
1	218-473	Boot - Switch	1	12	3296-29	Nut - Lock	2
2	218-553	Switch Assembly	1	13	54-9810	Wire Assembly	1
3	218-552	Bucket - Headlamp	1	†14		Fuse - 7-1/2 Amp.	1
4	218-554	Bracket	1	15	322-13	Screw - Hex. Flange Hd.	1
5	3255-8	Washer - Lock	2	16	218-556	Bracket - U	1
6	68-7110	Mount - Lamp	1	17	3231-2	Bolt - Carriage	1
7	3253-21	Washer - Lock	1	18	32128-35	Nut - Flange Lock	1
8	3217-7	Nut - Hex.	1	19	218-16	Bulb - Sealed Beam	1
9	3290-378	Tie Wrap	2	20	54-9810	Wire Assembly	1
10	68-7140	Bolt - U	1	*	54-9871	Headlamp Assembly (Incl. Ref. #1-5, 7-8 & 13-19)	1
11	3256-23	Washer - Flat	2				

\*Not Illustrated

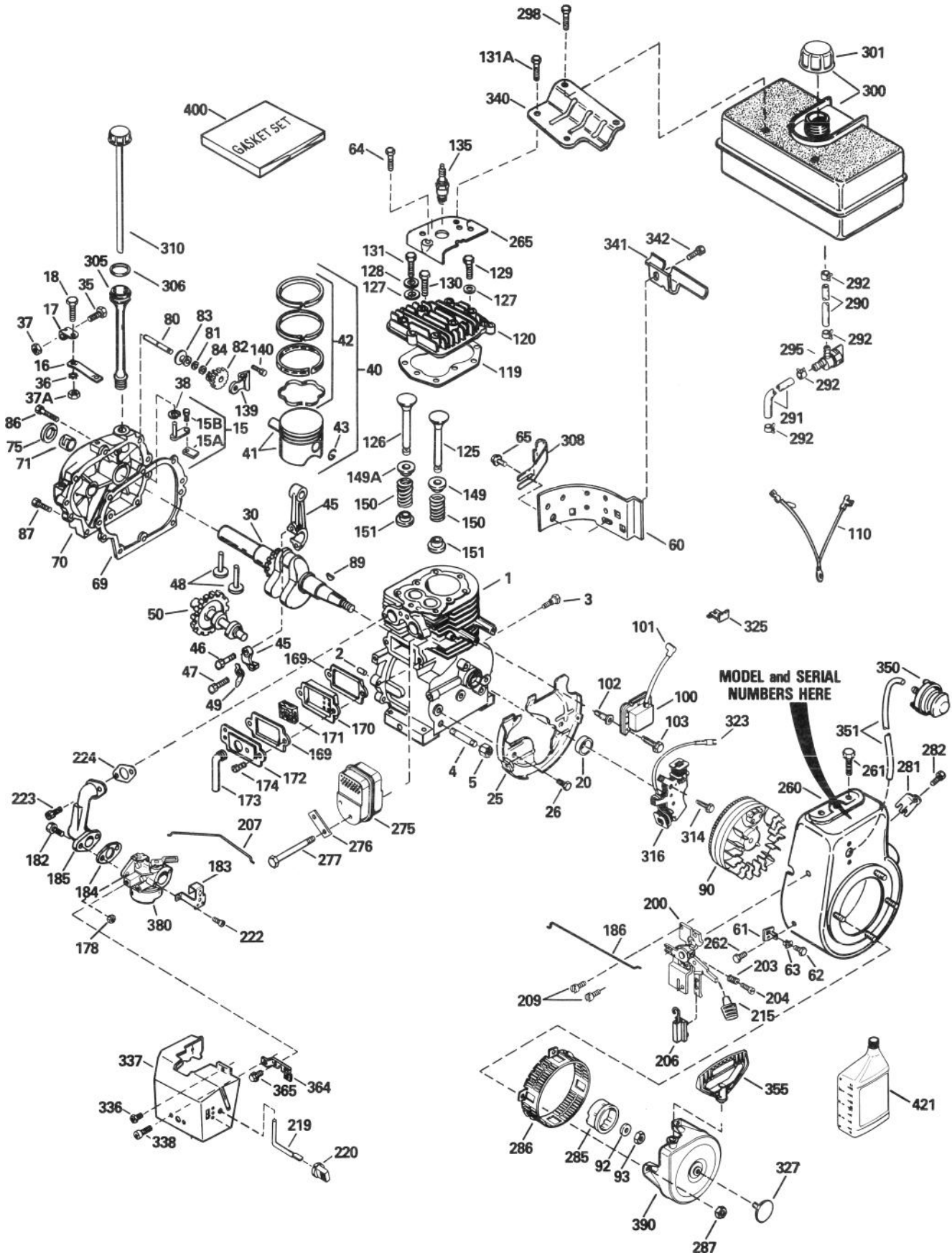
†Obtain Locally



## CARBURETOR NO. 632370A

Ref. No.	Part No.	Description	No. Used	Ref. No.	Part No.	Description	No. Used
1	631776A	Throttle Shaft & Lever Assy.	1	29	*631028	O-Ring, Float Bowl to Body	1
2	631970	Throttle Return Spring	1	30	*631021	Inlet Needle, Seat & Spring	1
6	631778	Throttle Shutter	1	31	631022	Spring Clip	1
7	650506	Screw - Throttle & Choke Shutter	4	32	27136A	Bowl Drain Assy. (Incl Ref.# 33)	1
10	632112	Choke Shaft & Lever Assy	1	33	27554	Drain Plunger - Gasket	1
14	632174	Choke Shutter	1	40	632239	High Speed Mixture Screw Assembly	1
15	630735	Choke Positioning Spring	1	41	*630740	O-Ring - High Speed Mixture Screw	1
16	632164	Fitting - Fuel	1	42	630739	Washer, High Speed Mixture Screw	1
17	650417	Screw - Idle Speed	1	43	630738	Spring - Tension	1
18	630766	Spring - Tension	1	44	*27110	Washer - Bowl Nut	1
20	632281	Screw - Idle Mixture	1	47	*630748	Welch Plug - Idle Mixing	1
21	630766	Spring - Idle Mixture Screw	1	48	*631027	Welch Plug - Vent	1
22	630739	Washer - Idle Screw	1	60	632347	Repair Kit (Includes items marked *)	1
23	*630740	O-Ring - Idle Screw	1				
25	631951	Float Bowl (Incl. Ref.# 32 & 33)	1				
27	*631024	Shaft - Float	1				
28	632019	Float	1				

# TECUMSEH ENGINE MODEL HMSK100-159227S



## TECUMSEH ENGINE MODEL HMSK100-159227S

Ref. No.	Part No.	Description	No. Used	Ref. No.	Part No.	Description	No. Used
1	35371	Cylinder (Incl. ref.#2 & 20)	1	64	650802	Screw - Hex Washer Taptite	1
2	27652	Pin - Dowel	2	65	650128	Screw - Hex Head Sems	1
3	650820	Screw - Hex Hd. Shoulder	2	*69	35262	Gasket - Cylinder Cover	1
4	34171	Nipple - Pipe	1	70	35376	Cover Assembly, Cylinder (Incl. ref.#71, 75 & 80)	1
5	30969	Cap - Oil Drain	1	71	35377	Bushing - Cylinder Cover	1
15	30699C	Rod Assembly - Governor (Incl. ref.#15A & 15B)	1	75	35319	Seal - Oil	1
15A	30700	Yoke - Governor	1	80	31845	Shaft - Governor	1
15B	650494	Screw - Fil. Hd. Sems	1	81	30590A	Washer - Flat	1
16	33454	Lever - Governor	1	82	35378	Gear - Governor (Incl. ref.#81)	1
17	29916	Clamp - Governor Lever	1	83	30588A	Spool - Governor	1
18	650548	Screw - Hex Washer Hd.	1	84	29193	Ring - Retaining	1
20	35319	Seal - Oil	1	86	650833	Screw, Hex Washer Powerlok	7
25	35326	Baffle - Blower Housing	1	87	650832	Screw, Hex Washer Powerlok	1
26	650561	Screw - Hex Washer Hd.	2	89	32589	Key - Flywheel	1
30	35571A	Crankshaft	1	90	611093	Flywheel (w/Ring Gear)	1
35	29826	Screw - Hex Washer Hd.	1	92	650880	Washer - Lock	1
36	29918	Washer - Ext. Tooth Lock	1	93	650881	Nut - Flywheel	1
37	29216	Nut & Lockwasher - Keps	1	100	35135	Solid State Assembly	1
37A	30322	Locknut - Hex Keps	1	101	610118	Cover - Spark Plug	1
38	29642	Ring - Retaining	1	102	650872	Stud - Solid State Mounting	2
40	35776	Piston, Pin & Ring Assy. Std. (Includes ref.#41, 42 & 43)	1	103	650814	Screw, Torx Hex Washer Sems	1
	35777	Piston, Pin & Ring Assy. .010 oversize (Includes ref.#41, 42 & 43)	1	110	35253	Wire - Ground	1
	35778	Piston, Pin & Ring Assy. .020 oversize (Includes ref.#41, 42 & 43)	1	*119	34923A	Gasket - Cylinder Head	1
41	35773	Piston & Pin Assembly Standard (Includes ref.#43)	1	120	34030A	Head - Cylinder	1
	35774	Piston & Pin Assembly .010 oversize (Incl. ref.#43)	1	125	27878A	Valve - Exhaust, Standard (Incl. ref.# 151)	1
	35775	Piston & Pin Assembly .020 oversize (Incl. ref.#43)	1		27880A	Valve - Exhaust 1/32" oversize (Incl. ref.# 151)	1
42	35779	Ring Set, Piston (Standard)	1	126	34035	Valve - Intake, Standard (Incl. ref.# 151)	1
	35780	Ring Set, Piston (.010 oversize)	1		34036	Valve - Intake 1/32" oversize (Incl. ref.# 151)	1
	35781	Ring Set, Piston (.020 oversize)	1	127	650691	Washer - Flat	5
43	35772	Retaining Ring, Piston Pin	2	128	650690	Washer - Belleville	3
45	35681	Rod Assembly - Connecting (Incl. ref.#46, 47 & 49)	1	129	650727	Screw - Special	2
46	650908	Bolt, Connecting Rod	1	130	6021A	Screw - Hex Flange Hd.	4
47	650882	Bolt, Connecting Rod	1	131	650694A	Screw - Hex Flange Hd.	3
48	34034	Lifter - Valve	2	131A	650713	Screw - Hex Hd.	2
49	35374	Dipper - Oil	1	135	35395	Spark Plug (RJ-19LM Resistor)	1
50	35375	Camshaft (Mechanical Compression Release)	1	139	33369	Bracket - Governor Gear	1
60	33273A	Extension - Blower Housing	1	140	650836	Screw - Hex Washer Hd.	2
61	34126	Bracket - Grommet Mounting	1	149	27882	Cap - Upper Valve Spring	1
62	650760	Screw - Pan Hd. Taptite	1	149A	35862	Seal Assy. - Intake Valve	1
63	28545	Grommet - Plastic	1	150	27881	Spring - Valve	2
				151	32581	Cap - Lower Valve Spring	2
				*169	27896A	Gasket - Breather	2
				170	28423	Body - Breather	1
				171	28424	Element - Breather	1
				172	28425	Cover - Breather	1

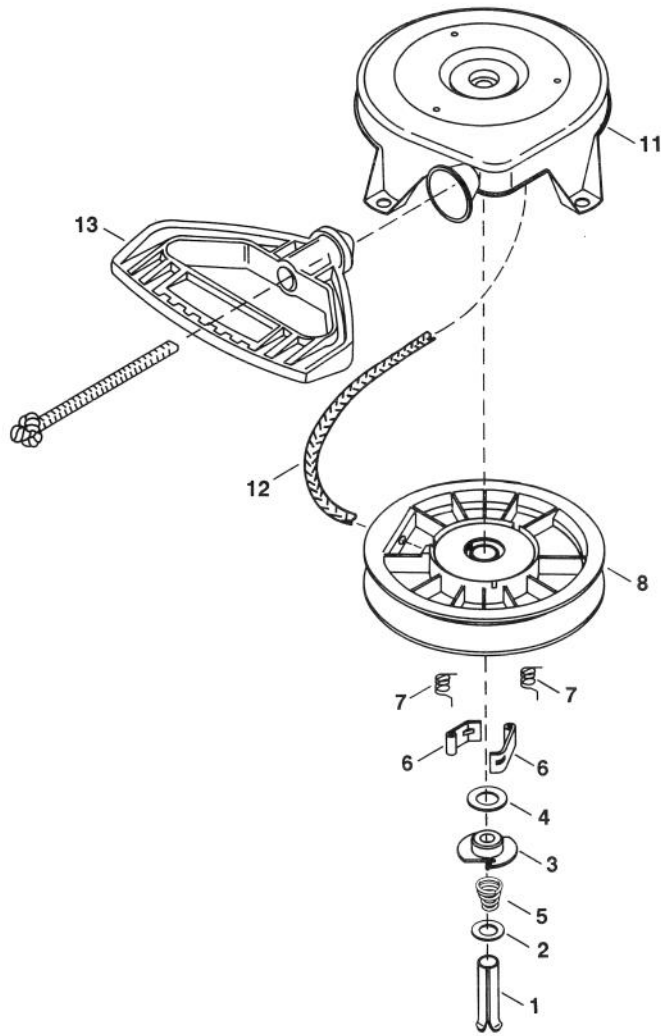
\* Included in Gasket Set 33279G (Ref.# 400).



## TECUMSEH ENGINE MODEL HMSK100-159227S (Continued)

Ref. No.	Part No.	Description	No. Used	Ref. No.	Part No.	Description	No. Used
173	35350	Tube - Breather	1	291	30705	Line - Fuel (16")	1
174	650128	Screw - Hex Hd. Sems	2	292	26460	Clamp - Fuel Line	4
178	29752	Nut & Lockwasher	2	295	35857	Valve - Fuel Shut-Off	1
182	30088A	Screw - Fil. Hd. Sems	2	298	650665	Screw - Hex Washer Hd.	2
183	34587	Bracket - Choke	1	300	34156A	Tank Assembly, Fuel (Incl. Ref.# 292 & 301)	1
*184	27915A	Gasket - Intake Pipe	1	301	35355	Cap - Fuel Tank	1
185	33877	Pipe - Intake	1	305	35554	Tube - Oil Fill	1
186	34667	Link - Governor	1	306	35499	O-Ring	1
200	34677	Bracket Assy. - Control (Incl. Ref.# 203, 204 & 206)	1	308	35540	Clip - Fill Tube	1
203	31342	Spring - Compression	1	310	36205	Dipstick - Oil	1
204	650549	Screw - Fil Hd.	1	314	650873	Screw - Hex Hd. Sems	1
206	610973	Terminal Assembly	1	316	611111	Coil Assy., Alternator (18 Watt)	1
207	33878	Link - Governor to Throttle	1	323	611118	Terminal	1
209	650821	Screw - Hex Washer Hd.	2	325	29443	Clip - Spring	1
215	35440	Knob - Control	1	327	35392	Plug - Starter	1
219	34586	Rod - Choke	1	336	650765	Screw - Hex Washer Hd.	1
220	35438	Knob - Choke	1	337	35057A	Cover - Carburetor	1
222	28820	Screw - Fil. Hd. Sems	2	338	28942	Screw - Hex Washer Sems	2
223	650378	Screw - Torx Fil Hd. Sems	2	340	34155	Bracket - Fuel Tank	1
*224	33263	Gasket - Carburetor	1	341	34154	Plate - Fuel Tank Mounting	1
260	35447A	Housing - Blower	1	342	650561	Screw - Hex Washer Hd.	1
261	650788	Screw - Hex Hd.	2	350	570682	Primer Assembly	1
262	29747B	Screw - Hex Hd. Sems	2	351	32180C	Line - Primer	1
265	33272B	Cover - Cylinder Head	1	355	590574	Starter Handle - Mitten Grip	1
275	35056	Muffler	1	364	33377	Bracket - Carburetor Cover Mounting	1
276	31588	Plate - Lock	1	365	650767	Screw - Hex Washer Hd.	2
277	792093	Screw - Flange Hex Hd.	2	380	632370A	Carburetor (Incl. Ref.# 184)	1
281	33013	Cover - Starter Hole	1	390	590672	Starter - Rewind	1
282	650760	Screw - Pan Hd. Taptite	1	400	33279G	Gasket Set (Incl. items marked *)	1
285	35985	Hub - Starter	1	421	730226	SAE 5W30 4-Cycle Oil (Qt.)	1
286	35446	Screen - Starter	1				
287	29752	Nut & Lockwasher	4				
290	29774	Line - Fuel (8-1/4")	1				

\* Included in Gasket Set 33279G (Ref.# 400).



## REWIND STARTER NO. 590672

Ref. No.	Part No.	Description	No. Used
1	590599A	Pin - Spring (Incl. Ref.# 4)	1
2	590600	Washer	1
3	590679	Retainer	1
4	590601	Washer	1
5	590678	Spring - Brake	1
6	590680	Dog - Starter	2
7	590412	Spring - Dog	2

Ref. No.	Part No.	Description	No. Used
8	590682	Pulley & Rewind Spring Assy.	1
11	590684	Housing Assy. - Starter	1
12	590456	Rope - Starter (11/64" Dia. & 114" Long)	1
13	590574	Handle - Mitten Grip (Not included with Starter)	1