



## Replacement Ogura Clutch Kit 2006-2007 Kubota-Powered Z Master® Riding Mower

Model No. 114-8150

### Parts Catalog

#### Ordering Replacement Parts

To order replacement parts, please supply the part number, the quantity, and the description of each part desired.

#### Understanding Reference Numbers

Each Identified part in an illustration has a reference number. The reference number for a part also appears in the parts list, along with other information about the part.

This catalog uses two special reference number formats, one to indicate parts in a service assembly and another to indicate the quantity of a given part in an illustration.

#### Service Assembly Reference Numbers

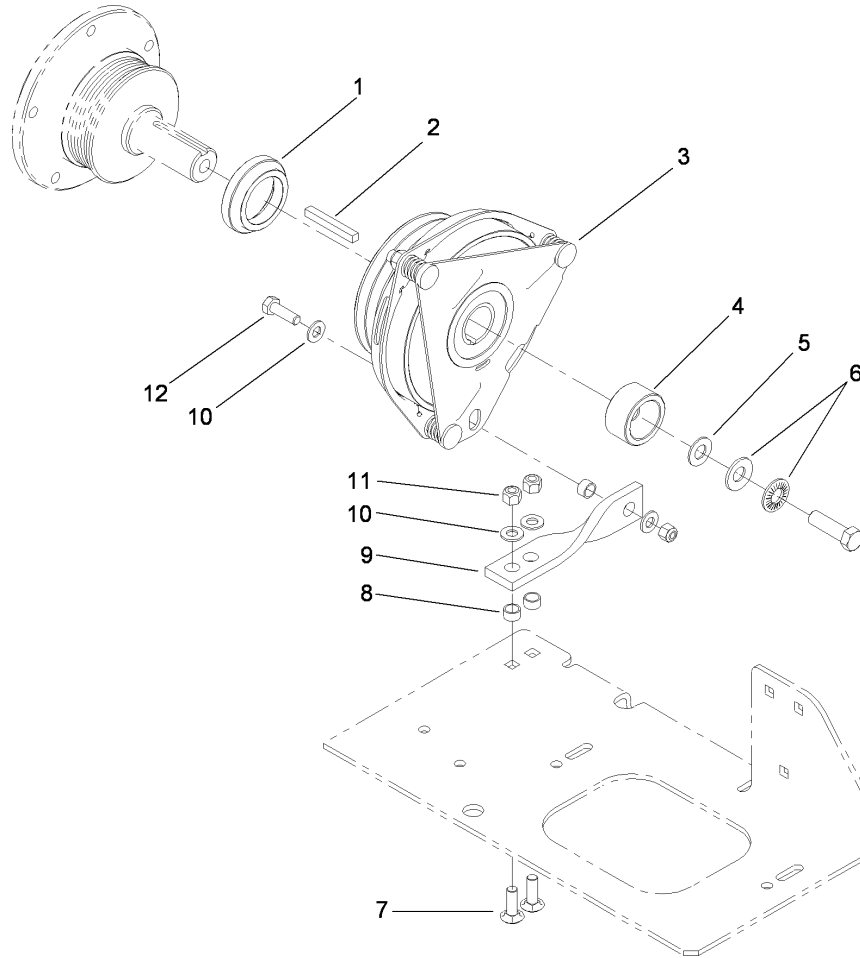
Parts in service assemblies have reference numbers in the form a:b. The a represents the reference number of the entire service assembly and the b represents a sequential number unique to each part within the service assembly.

For example, a wheel assembly might be identified by reference number 6, the tire by 6:1, the valve by 6:2, and the wheel by 6:3. When you order the assembly identified by reference number 6, you receive all parts identified by reference numbers 6:1, 6:2, and 6:3. However, you may also order any part individually. Reference numbers of this type appear in illustrations and in part lists.

#### Reference Numbers Indicating Quantity

In an illustration, if a reference number indicates more than one part, the reference number has the form nX y. The n represents the quantity of the part, the X is the multiplication symbol, and the y represents the reference number.

For example, in an illustration, the reference number 2X 37 means that two of the parts identified by reference number 37 are indicated.



## Replacement Ogura Clutch Kit No. 114-8150

| Ref | Part No. | Qty. | Description        |  |  |  |  |
|-----|----------|------|--------------------|--|--|--|--|
| 1   | 112-1777 | 1    | Adaptor-Clutch     |  |  |  |  |
| 2   | 5-1336   | 1    | Key-Square         |  |  |  |  |
| 3   | 112-2320 | 1    | Clutch-Magnetic    |  |  |  |  |
| 4   | 114-8152 | 1    | Retainer-Clutch    |  |  |  |  |
| 5   | 3256-25  | 1    | Washer-Flat        |  |  |  |  |
| 6   | 1-603610 | 2    | Washer-Spring      |  |  |  |  |
| 7   | 3230-22  | 2    | Screw-CARR         |  |  |  |  |
| 8   | 65-9820  | 3    | Spacer             |  |  |  |  |
| 9   | 112-1781 | 1    | Strap-Stop, Clutch |  |  |  |  |
| 10  | 3256-23  | 4    | Washer-Flat        |  |  |  |  |
| 11  | 3296-29  | 3    | Nut-Lock, NI       |  |  |  |  |
| 12  | 322-5    | 1    | Screw-HH           |  |  |  |  |