



## 54in Triple Bagger

**Model No. 190-285-000 - 270000001 and up.**

**Model No. 190-842-000 - 260000001 and up.**

## Parts Catalog

### Ordering Replacement Parts

To order replacement parts, please supply the part number, the quantity, and the description of each part desired.

### Understanding Reference Numbers

Each Identified part in an illustration has a reference number. The reference number for a part also appears in the parts list, along with other information about the part.

This catalog uses two special reference number formats, one to indicate parts in a service assembly and another to indicate the quantity of a given part in an illustration.

### Service Assembly Reference Numbers

Parts in service assemblies have reference numbers in the form a:b. The a represents the reference number of the entire service assembly and the b represents a sequential number unique to each part within the service assembly.

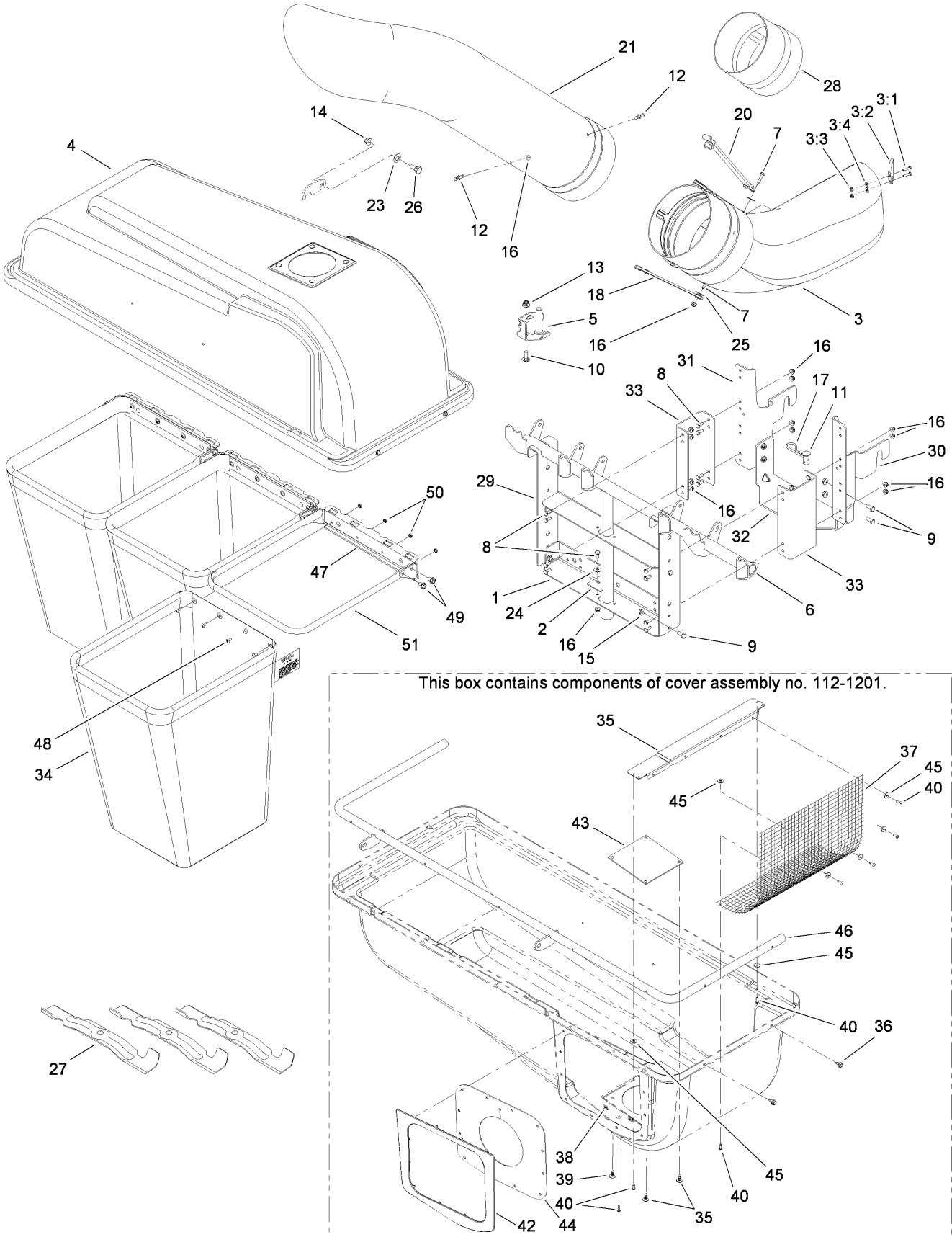
For example, a wheel assembly might be identified by reference number 6, the tire by 6:1, the valve by 6:2, and the wheel by 6:3. When you order the assembly identified by reference number 6, you receive all parts identified by reference numbers 6:1, 6:2, and 6:3. However, you may also order any part individually. Reference numbers of this type appear in illustrations and in part lists.

### Reference Numbers Indicating Quantity

In an illustration, if a reference number indicates more than one part, the reference number has the form nX y. The n represents the quantity of the part, the X is the multiplication symbol, and the y represents the reference number.

For example, in an illustration, the reference number 2X 37 means that two of the parts identified by reference number 37 are indicated.

# 54 Inch Triple Bagger Assembly



## 54 Inch Triple Bagger Assembly

Ref	Part No.	Qty.	Description				
1	112-0942	1	Bracket-Support, Catcher				
2	112-0943	1	Bracket-Tubing, Adapter				
3	112-0947	1	Discharge Chute ASM				
3:1	112-6179	1	Screw-Hex				
3:2	112-6180	1	Rod-Mount, Bag				
3:3	112-0636	1	Nut-Lock, Flange				
3:4	112-5989	1	Washer-Flat				
4	112-1201	1	Cover ASM				
5	112-0955	1	Chute Stop Bracket ASM				
6	112-0963	1	Catcher Support ASM				
7	112-1078	1	Screw-HH				
8	112-1083	1	Screw-HH				
9	112-1090	1	Screw-HH				
10	112-0858	1	Bolt-Carriage				
11	112-1244	1	Pin-Clevis				
12	112-0484	1	Pin-Catcher, Grass				
13	112-0417	1	Nut-Lock, Hex				
14	112-0385	1	Nut-Lock, Flange				
15	112-0511	1	Nut-Lock, Flange				
16	112-0657	1	Nut-Lock, Flange				
17	112-1246	1	Clip-Hairpin				
18	112-0996	1	Strap-Chute				
20	112-0998	1	Strap-Chute				
21	112-1005	1	Tube-Elbow, Catcher				
23	112-1161	1	Washer-Bell				
24	112-0485	1	Washer-Spring				
25	112-1173	1	Washer-Flat				
26	112-0442	1	Bolt-Shoulder				
27	112-1187	1	Blade-Extra Hi Lift (18.50 Inch)				
28	112-1011	1	Tube-Extension				
29	112-1043	1	Bracket-Support				
30	112-1044	1	Bracket-Catcher, RH				
31	112-1045	1	Bracket-Catcher, LH				
32	112-1046	1	Bracket-Cross, Support				
33	112-1060	1	Bracket-Catcher				
34	112-1199	1	Bag-Grass				
35	112-1247	1	Bracket-Mounting, Screen				
36	112-0659	1	Screw-HWH				
37	112-1248	1	Screen				
38	112-1249	1	Nut-Push				
39	112-1251	1	Clip-Ratchet				
40	112-1252	1	Rivet-Pop				
42	112-1254	1	Seal-Retainer				
43	112-1255	1	Plate-Plastic				
44	112-1256	1	Seal-Bag, Grass				
45	112-1168	1	Washer-Flat				
46	112-1257	1	Bracket-Hinge				
47	112-1258	1	Bracket-Hanger, Bag				
48	112-1076	1	Screw-Truss, Machine				
49	112-0556	1	Screw-HWH				
50	112-1105	1	Nut-Sems				
51	112-1035	1	Frame-Bag, Catcher				

