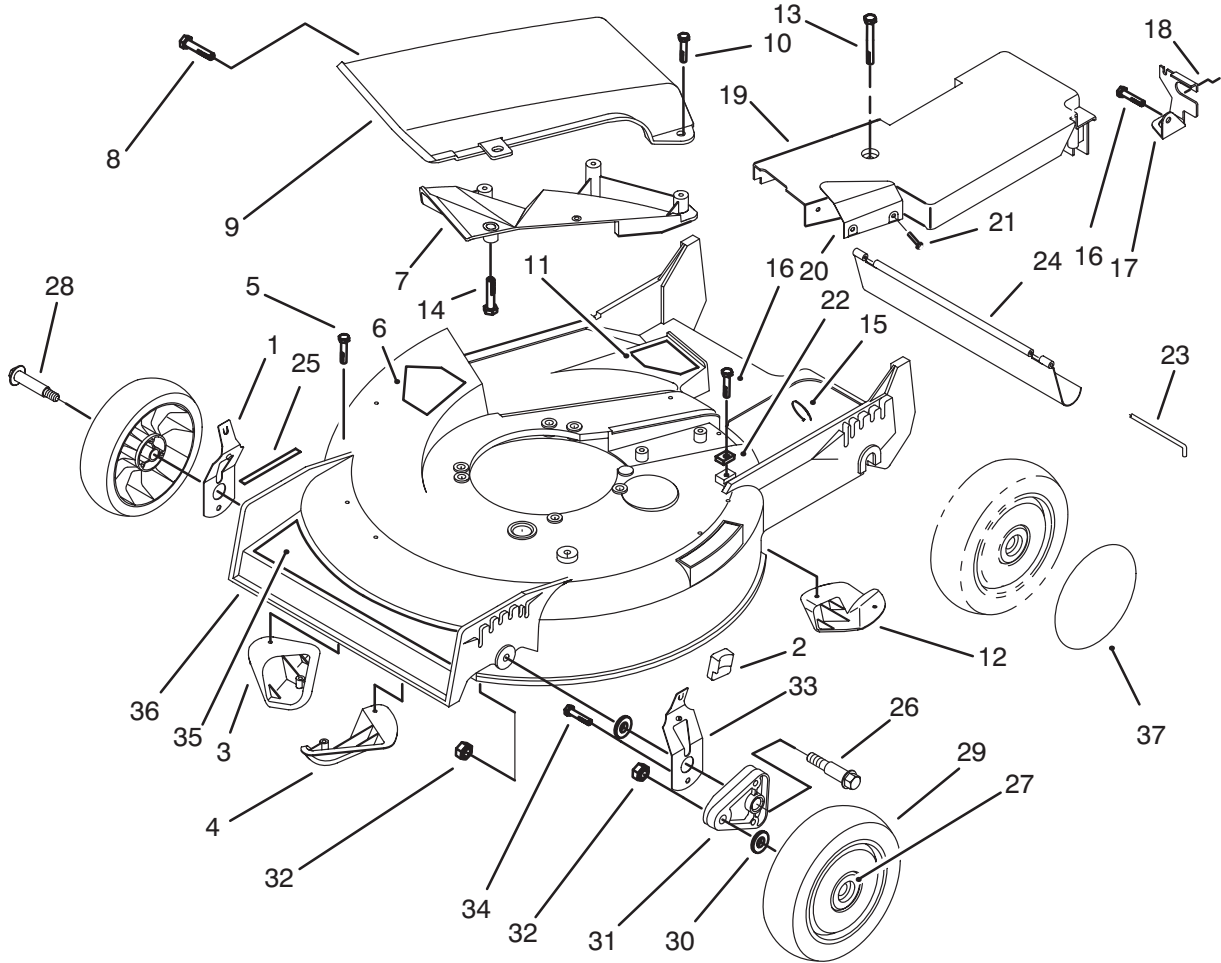




MODEL NO. 20436-3900001 & UP	<b>PARTS CATALOG</b>
<b>21" RECYCLER<sup>®</sup></b> Mower	

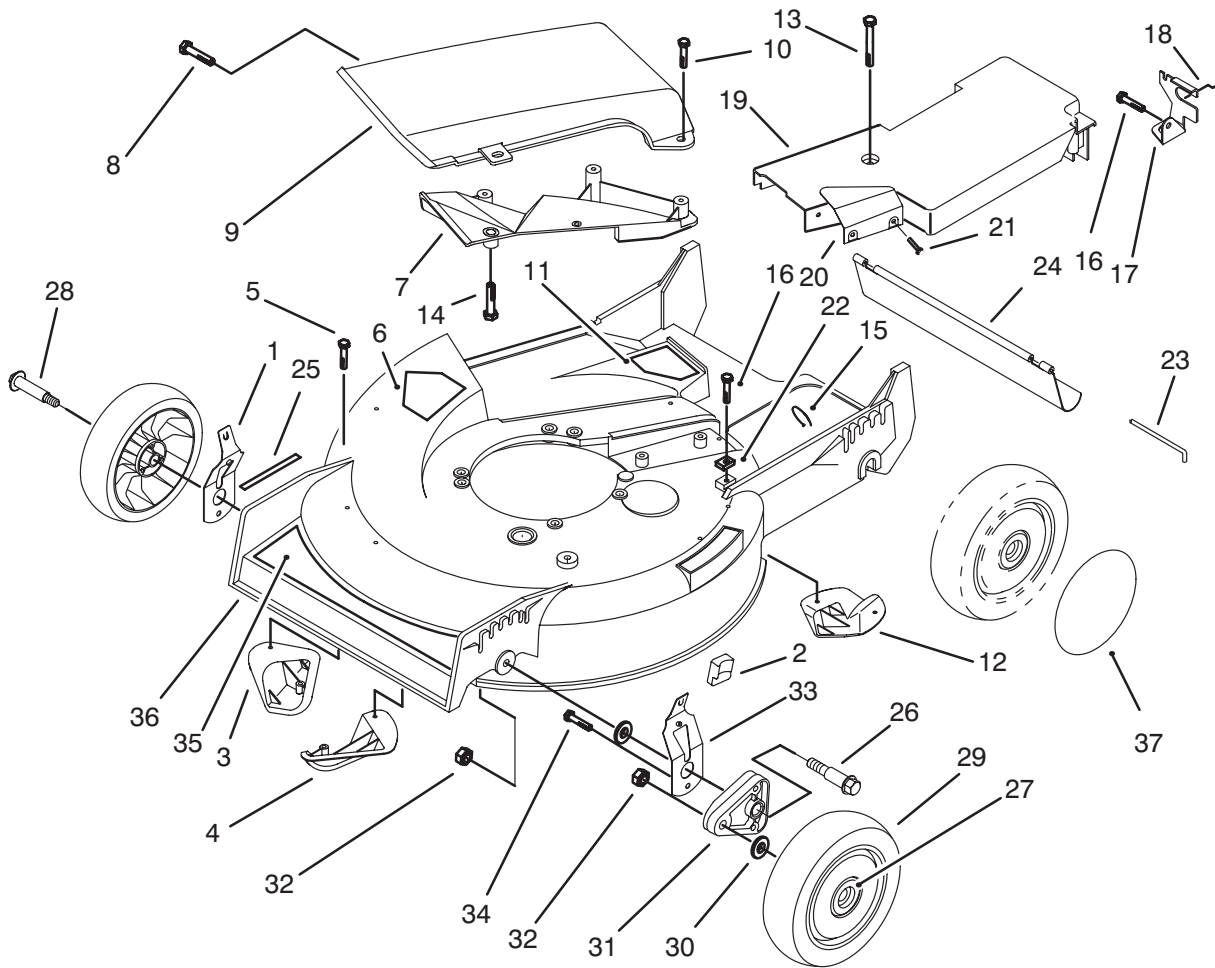


C-1396

## HOUSING ASSEMBLY

Ref. No.	Part No.	Description	No. Used
1	71-0561	Spring Arm Ass'y - R.H.	1
2	25-7740	Knob - Spring Arm	2
3	92-1720	Plate - Kicker Rt. Front	1
4	92-1730	Plate - Kicker Rt. Rear	1
5	32144-111	Screw - Pan Hd.	6
6	39-5770	Decal - Danger	1
7		Deflector - Recycler	1
8	46-6810	Screw - Hex Washer Hd. Thread Forming	1
9	14-4069	Cover Assembly (Incl. Ref. #7 & 14)	1
10	46-6811	Screw w/Washer	3
11	82-8450	Decal - Danger	1
12	92-1750	Plate - Kicker Left Rear	1
13	37-7260	Screw - Special	2
14		Screw	5
15	3290-378	Tie - Cable	1

Ref. No.	Part No.	Description	No. Used
16	32144-70	Screw - Hex Washer Hd. Thread Forming	2
17	82-5680	Bracket - Traction Adj.	1
18	46-7030	Retainer - Cable	1
19	52-7406	Belt Cover Assembly (Incl. Ref. #20 & 21)	1
20	77-0280	Shield - Heat	1
21	3295-35	Rivet	2
22	62-3720	Clamp - Cable	1
23	33-3208	Rod - Shield	1
24	44-0580	Shield - Rear	1
25	92-2279	Decal - H.O.C.	4
26	66-0560	Screw - Pivot	2
27	27-6250	Bushing	4
28	27-6232	Bolt - Wheel	2
29	14-9989	Wheel & Tire Assembly (Incl. Ref. #27)	2

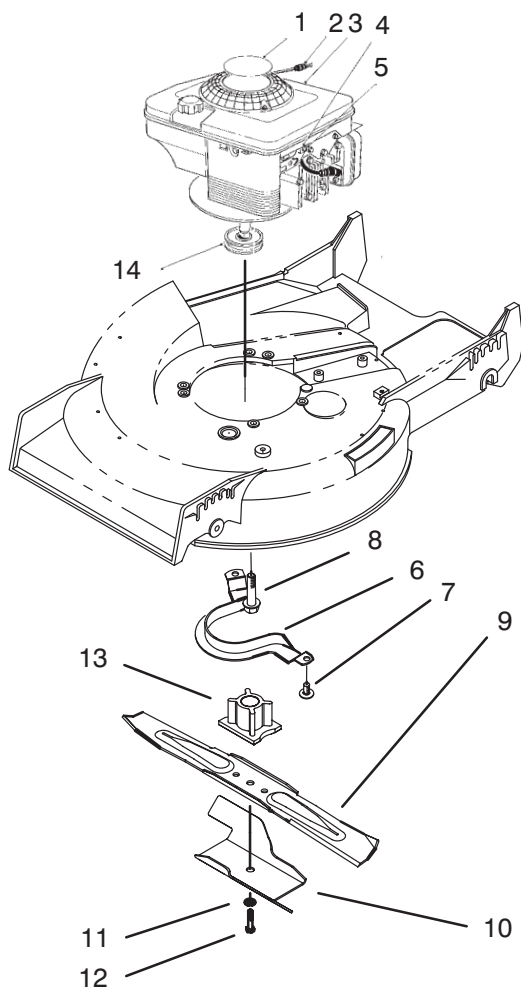


C-1396

## HOUSING ASSEMBLY (CONTINUED)

Ref. No.	Part No.	Description	No. Used
30	40-1940	Washer - Wheel	4
31	66-0580-03	Arm - Pivot	2
32	3296-6	Nut - Lock	4
33	71-0571	Spring Arm Ass'y - L.H.	1
34	32144-85	Screw - Hex Hd. Cap	2
35	92-2281	Decal - Deck	1

Ref. No.	Part No.	Description	No. Used
36	16-1599	Housing Assembly (Incl. Ref. #3-6, 11, 12, & 25 pg. 2) (Incl Ref. #6 & 7 pg.3)	1
37	91-2253	Cover - Wheel	1

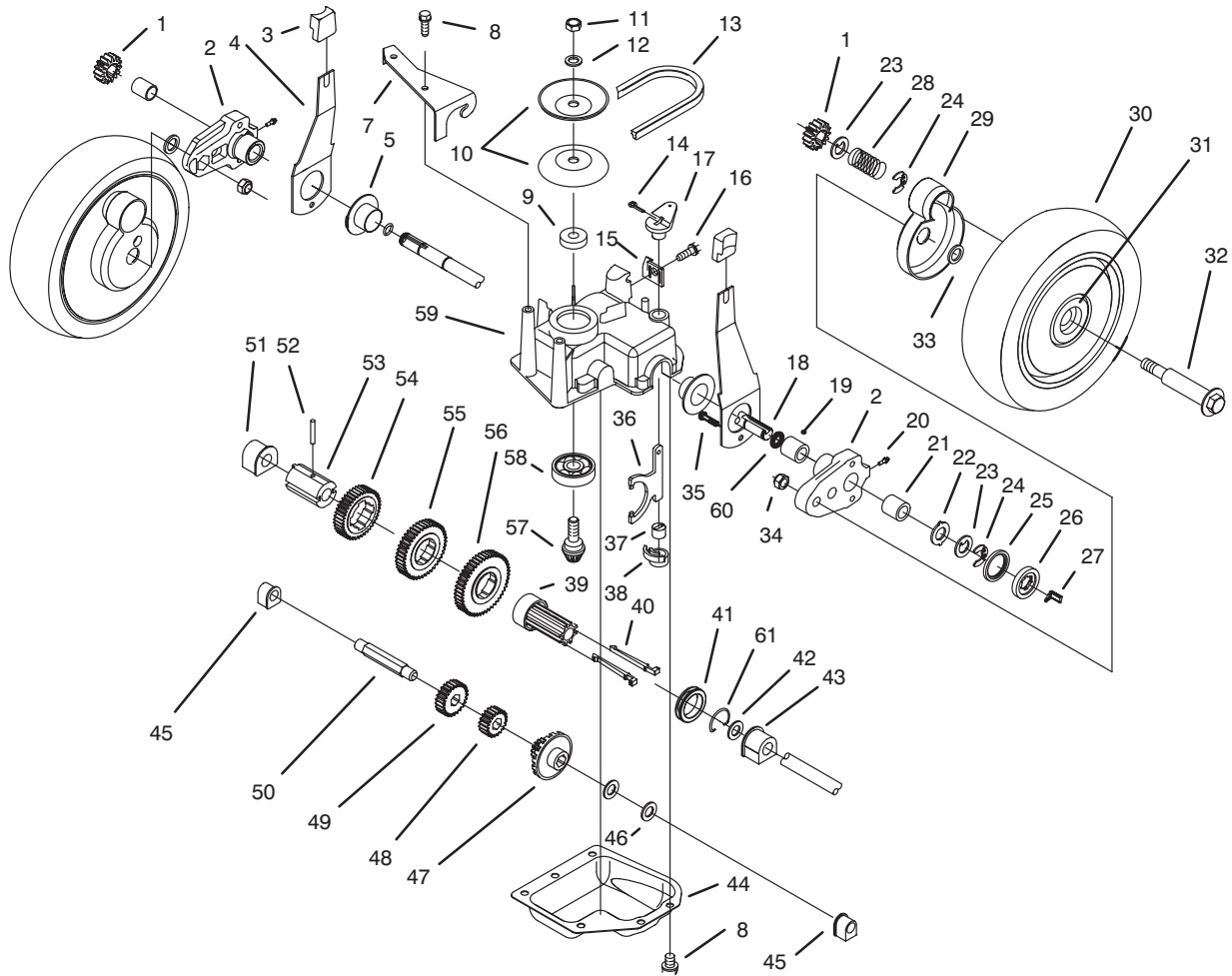


C-1393

## ENGINE ASSEMBLY

Ref. No.	Part No.	Description	No. Used	Ref. No.	Part No.	Description	No. Used
1	92-2282	Decal - Engine	1	8	32144-102	Screw - Thread Forming	3
2	2210-316	Stop - Rope	1	9	91-2256	Blade - 21"	1
3		Engine	1	10	92-1599	Stiffener - Blade	1
†4	2210-249	Clamp - Casing	1	11	3253-22	Washer - Lock	1
†5	2210-313	Screw - Clamp	1	12	26-0670	Screw - Blade	1
6	66-0570	Guide - Belt	1	13	62-7540	Retainer - Blade	1
7	32144-70	Screw - Thread Forming	2	14	62-7550	Pulley - Driver	1

†Supplied with Engine



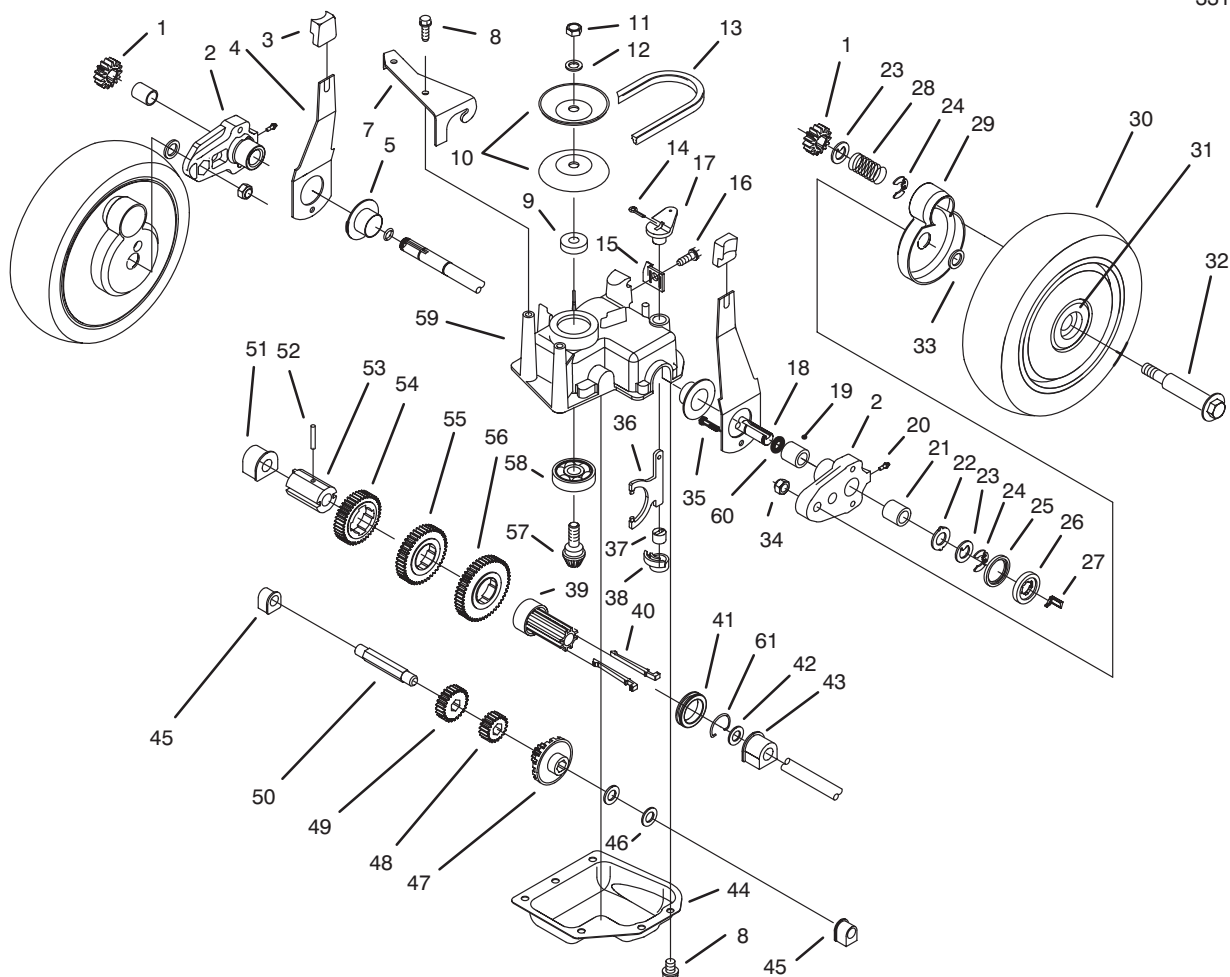
C-1333

## GEAR CASE ASSEMBLY

Ref. No.	Part No.	Description	No. Used
1	65-4750	Pinion	2
2	63-8701-03	Pivot Arm Assembly (Incl. Ref # 19, 20, & 21)	2
3	25-7740	Knob - Arm	2
4	63-8721	Spring Arm Assembly	2
5	42-3520	End Cap	2
7	62-4320	Bracket - Belt Guide	1
8	49-2040	Screw - Self Tapping	8
9	62-6660	Spacer	1
10	60-8840	Pulley - Half	2
11	3296-5	Locknut	1
12	3256-24	Washer - Flat	1
13	62-3900	V-Belt	1
14	3272-10	Pin - Cotter	1
15	82-8780	Cable - Retainer	1
16	32144-70	Screw - Thread Forming	1
17	60-8821	Lever - Shift	1
18	65-4770	Shaft - Output	1
19	70-9760	Bushing	2
20	302-56	Fitting - Grease	2
21	48-2060	Needle Bearing	2
22	65-4730	Thrust Washer	2
23	65-4740	Thrust Washer	4
24	65-2720	Ring - Retaining	4
25	65-4710	Ring - Friction	2

Ref. No.	Part No.	Description	No. Used
26	65-4760	Washer - Clutch	2
27	66-6050	Key - Rocker L.H.	1
*	66-6040	Key - Rocker R.H.	1
28	65-4720	Spring	2
29	74-1660	Cover - Wheel	2
30	16-0029	Wheel - Tire & Gear Ass'y (Incl. Ref. # 31)	2
31	27-6250	Bushing - Wheel	4
32	27-6232	Wheel Bolt	2
33	74-1670	Spacer - Wheel Cover	2
34	3296-6	Locknut	2
35	32144-85	Screw	2
36	60-8870	Yoke - Shift	1
37	29-9570	Bushing - Yoke	1
38	60-8810	Retainer - Shift Fork	1
39	76-0780	Sleeve - Shift Key	1
40	76-0760	Key - Shift	2
41	76-0770	Collar - Shift	1
42	36-4780	Washer - Thrust	1
43	60-8770	Bushing - Output Shaft	1
44	60-8730	Cover - Gear Case	1
45	60-8750	Bushing - Int. Shaft	2
46	36-4791	Washer - Thrust	2
47	55-3760	Gear - Pinion 15 Tooth	1
48	55-3780	Gear - Pinion 20 Tooth	1

\*Not Illustrated

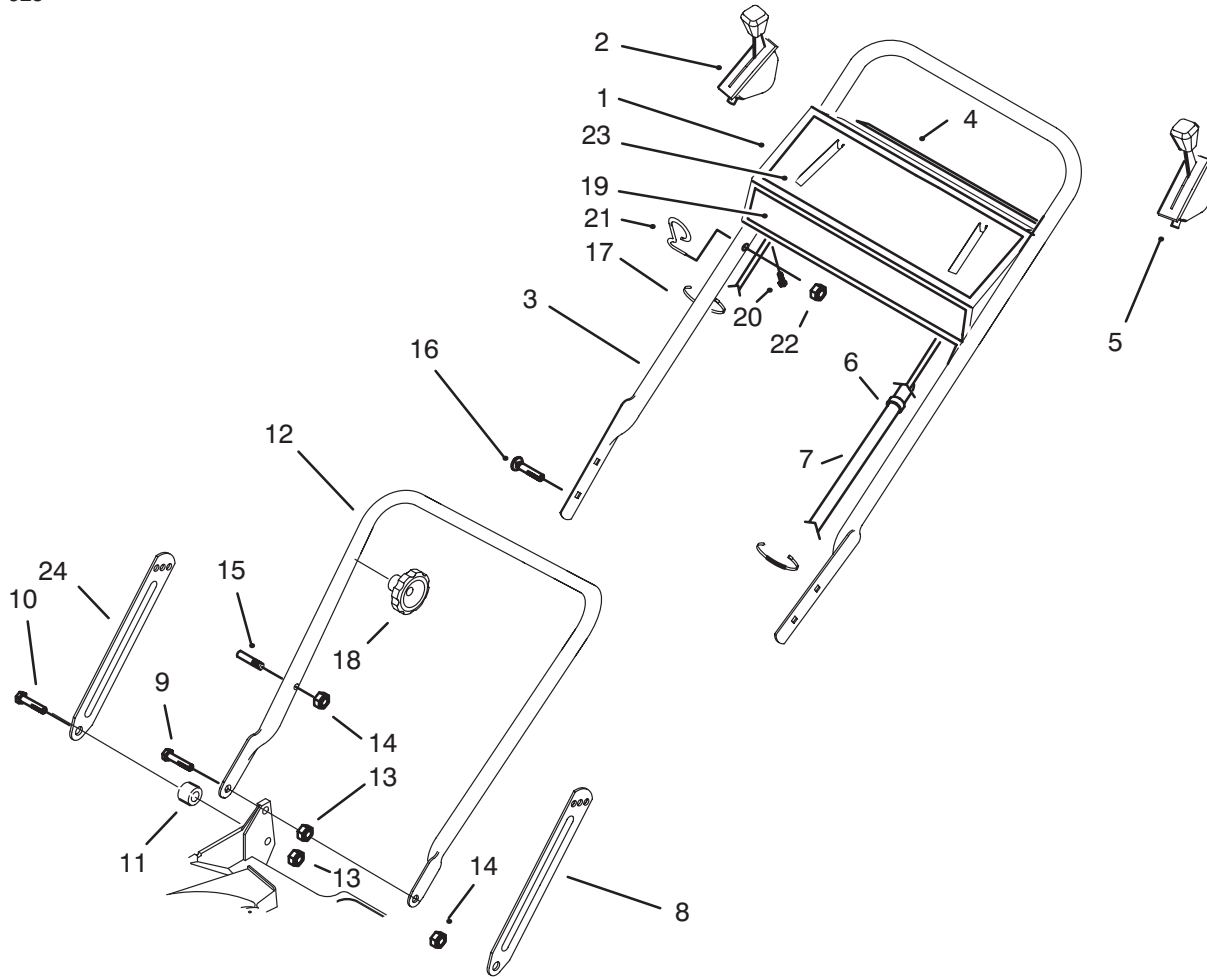


C-1333

## GEAR CASE ASSEMBLY (CONTINUED)

Ref. No.	Part No.	Description	No. Used	Ref. No.	Part No.	Description	No. Used
49	55-3800	Gear - Pinion	1	56	55-3770	Gear - 49 Tooth 1st Gear	1
50	60-8800	Shaft - Intermediate	1	57	60-8890	Pinion - Bevel	1
51	60-8850	Bushing - Output Shaft	1	58	38-7820	Bearing - Ball	1
52	32121-120	Pin - Coil	1	59	60-8710	Gear Case - Upper	1
53	60-8790	Sleeve - Gear	1	60	237-153	O-Ring	2
54	55-3810	Gear - 39 Tooth 3rd Gear	1	61	65-5250	Clip - Spring	1
55	55-3790	Gear - 44 Tooth 2nd Gear	1	*	62-6673	Gear Case Assembly	1

\*Not Illustrated



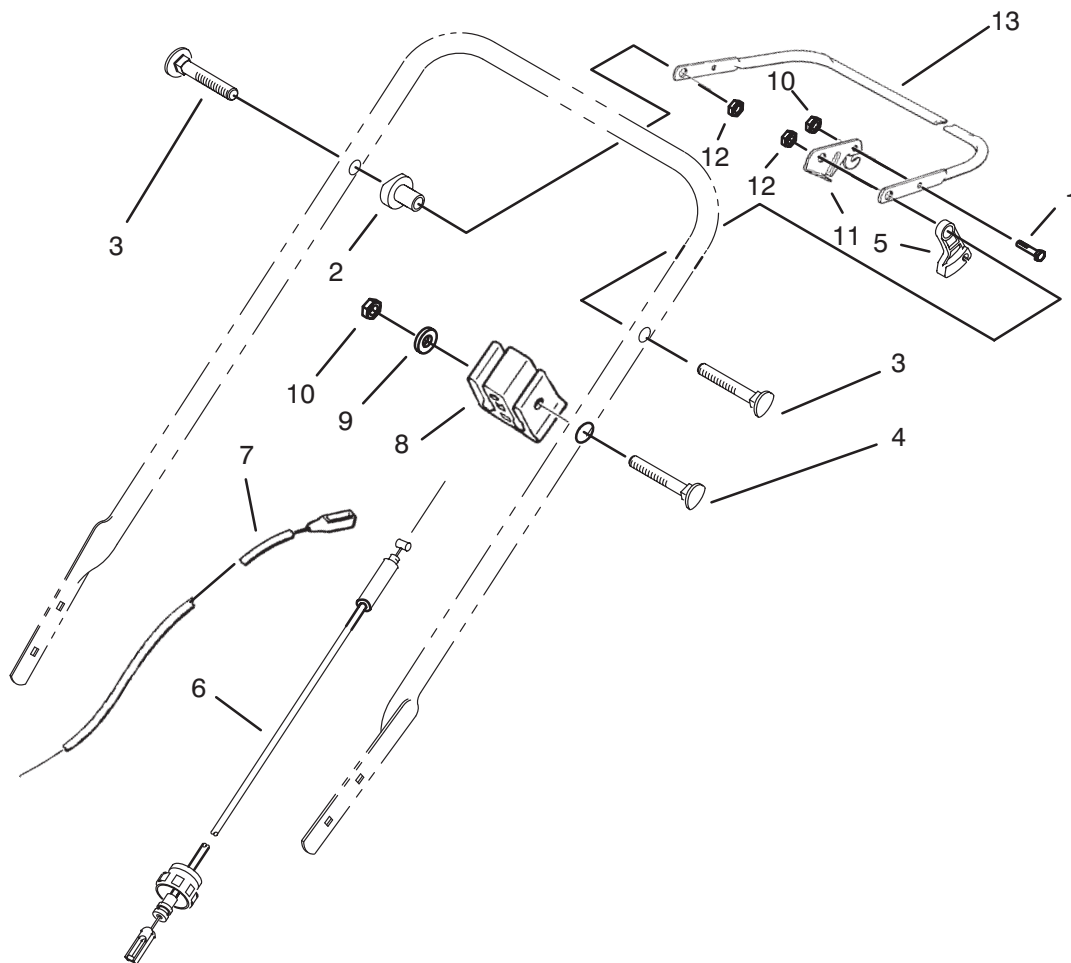
C-1397

## HANDLE ASSEMBLY

Ref. No.	Part No.	Description	No. Used
1	16-1609	Panel - Control (Incl. Ref. #4, 19, & 23)	1
2	76-2712	Control - Ground Speed (Bend Type #1) (Sheath Lg. 41 3/4") (Wire Lg. 2 1/2")	1
3	92-2278	Handle - Upper	1
4	63-9060	Decal - Danger	1
5	74-3894	Control - Throttle (Bend Type #3) ( Sheath Lg. 60") (Wire Lg. 1 3/4")	1
6	2412-50	Clip Convoluted Tubing	4
7	46-6440	Cover - Control Cables	1
8	84-8361	Latch - Handle L.H.	1
9	27-7211	Screw - Shoulder	2

Ref. No.	Part No.	Description	No. Used
10	27-7210	Screw - Shoulder	2
11	3-3287	Spacer	2
12	82-5531-05	Lower Handle Assembly	1
13	3296-72	Nut - Lock	3
14	3296-47	Nut - Lock	3
†15	49-2750	Pin - Handle	2
16	92-2260	Screw - Handle	2
17	3290-378	Tie - Cable	2
18	19-4050	Knob - Handle Release	2
19	92-3146	Decal - Front Panel	1
20	32144-115	Screw - Self Tap Slotted	5
21	86-9671	Guide - Rope	1
22	3296-73	Nut - Lock	1
23	92-2287	Decal - Instruction	1
24	84-8401	Latch - Handle R.H.	1

†Service Replacement Part

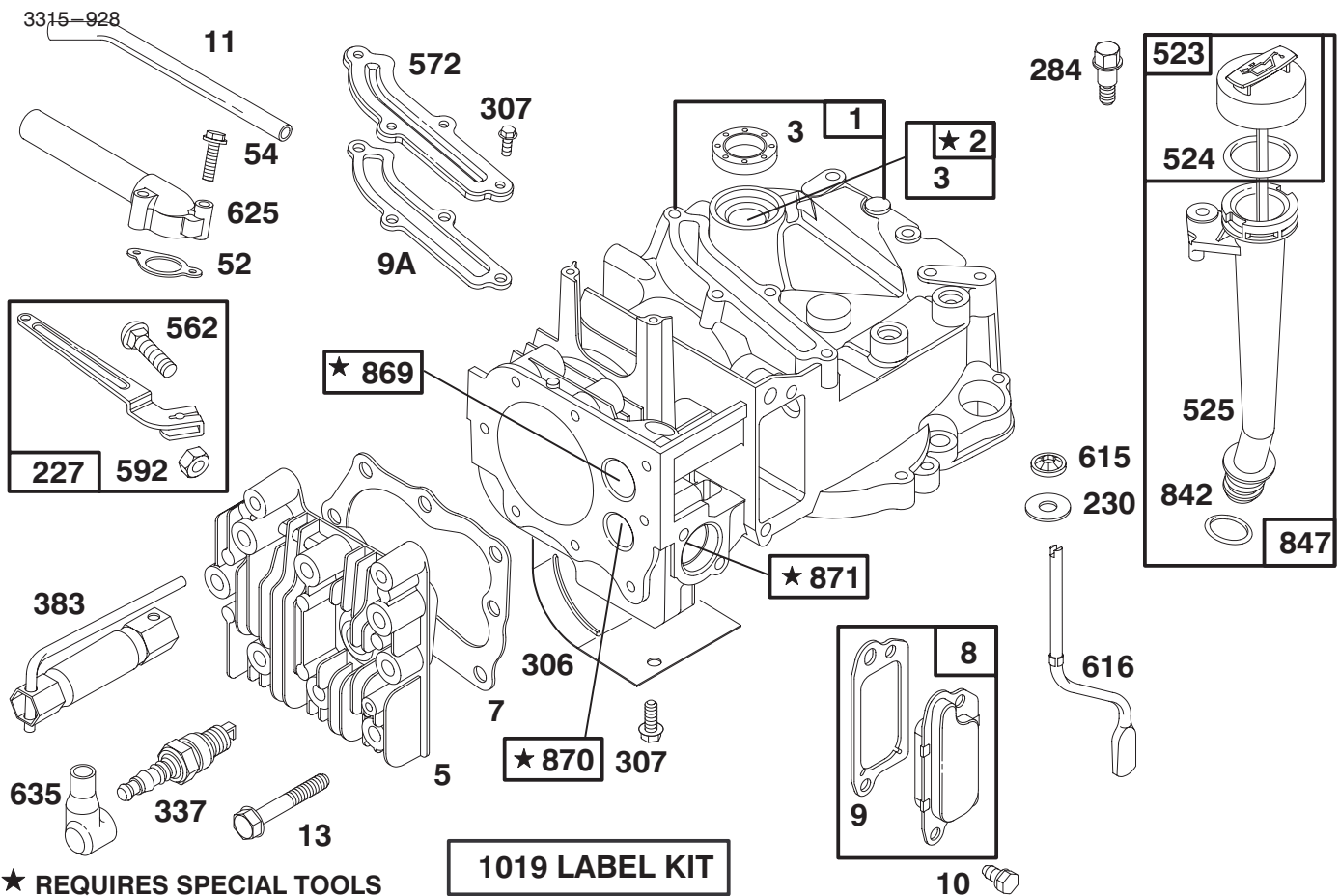


C-1395

## TRACTION CONTROL ASSEMBLY

Ref. No.	Part No.	Description	No. Used
1	321-39	Screw - Hex Hd. Cap	1
2	49-1630	Support - Spacer	2
3	92-2260	Screw - Handle	2
4	92-2269	Screw - Handle	1
5	46-5520	Lever - Traction	1
6	46-5481	Cable - Traction	1
7	76-4330	Cable - Brake	1

Ref. No.	Part No.	Description	No. Used
8	46-6980	Support - Cable	1
9	3256-1	Washer - Flat	1
10	3296-73	Nut - Lock	2
11	66-5351	Lever - Control	1
12	3296-74	Nut - Lock	2
13	71-3080	Bar - Control	1



★ REQUIRES SPECIAL TOOLS TO INSTALL. SEE REPAIR INSTRUCTION MANUAL.

**1019 LABEL KIT**

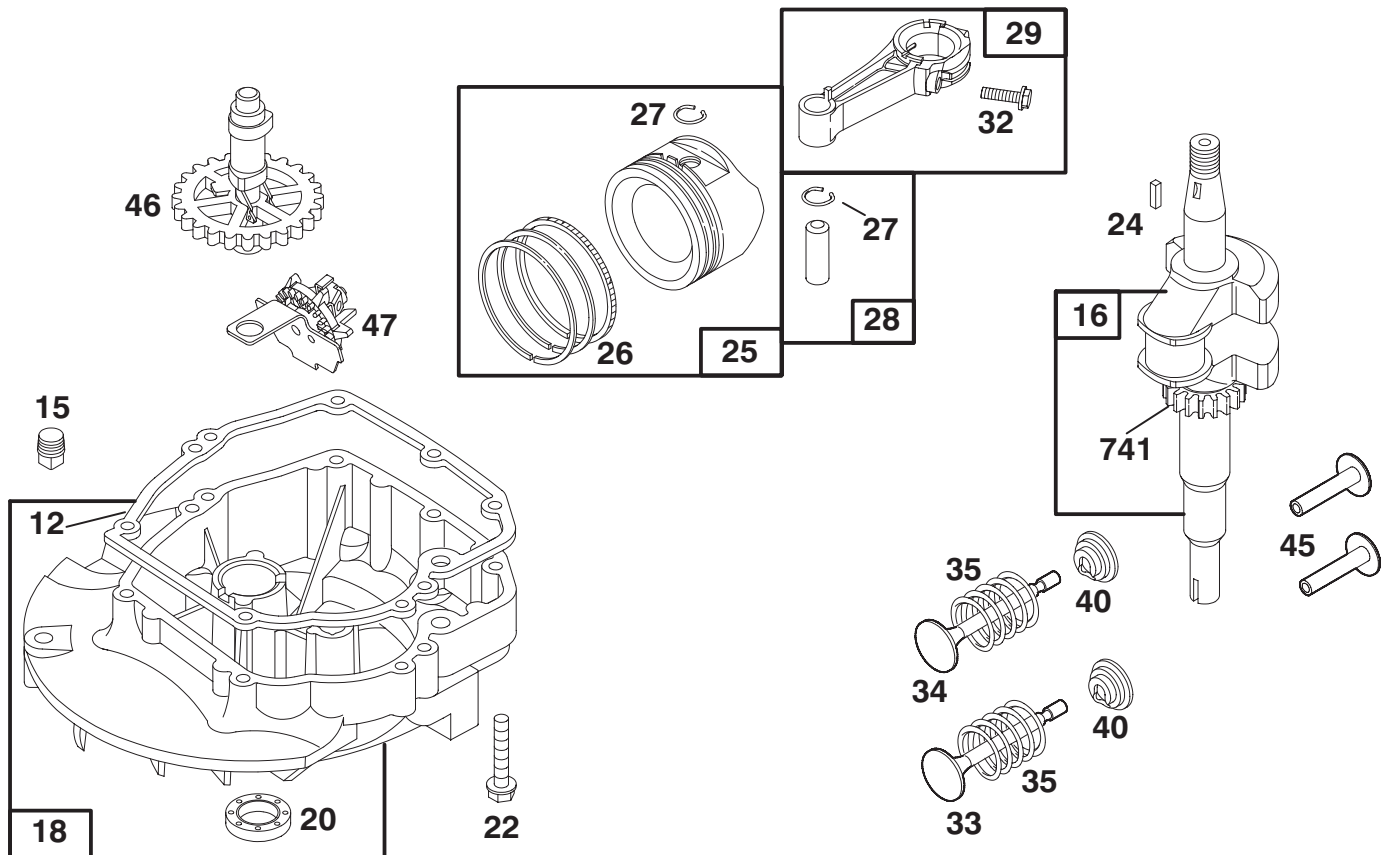
Assemblies include all parts shown in frames.

## ENGINE BRIGGS & STRATTON MODEL 124702-3115-01

Ref. No.	Part No.	Description	No. Used
1	493260	Cylinder Assembly	1
2	293708	Bushing—Cylinder	1
★3	299819	Seal—Oil	1
5	213861	Head—Cylinder	1
★7	272200	Gasket—Cylinder Head	1
8	495786	Breather—Valve Chamber	1
★9	272481	Gasket—Valve Cover	1
★9A	272238	Gasket—Baffle Plate	1
10	94650	Screw—Breather Mtg.	1
11	231685	Tube—Breather	1
13	94547	Screw—Cylinder Head	1
★52	272199	Gasket—Intake Elbow	1
54	94526	Screw—Intake Elbow Mtg.	1
227	492349	Lever Assembly—Gov.	1
230	67072	Washer—Gov. Crank	1
284	94511	Screw—Hex. Head	1
306	224324	Shield—Cylinder	1
307	94515	Screw—Hex. Head	1
337	802592	Plug—Spark	1
383	89838	Wrench—Spark Plug	1

Ref. No.	Part No.	Description	No. Used
523	495264	Cap With Dipstick—Oil Filler	1
★524	280393	Seal—Filler Tube	1
525	495265	Tube—Oil Filler	1
562	92613	Bolt—Governor Lever	1
572	224328	Baffle—Cylinder	1
592	231082	Nut—Hex.	1
615	94474	Pushnut (Governor Crank)	1
616	262578	Crank—Governor	1
625	492717	Tube—Fuel Intake	1
635	66538	Elbow—Spark Plug	1
★842	280966	Seal—O-Ring	1
847	495263	Oil Fill Tube and Dipstick Assy.	1
869	213512	Seat—Intake Valve	1
870	213513	Seat—Exhaust Valve	1
871	262001	Guide—Exhaust Valve	1
		<b>Note:</b> 63709 Guide—Intake Valve	1
1019	494256	Label Kit	1

★ Included in Gasket Set—Part No. 493263.



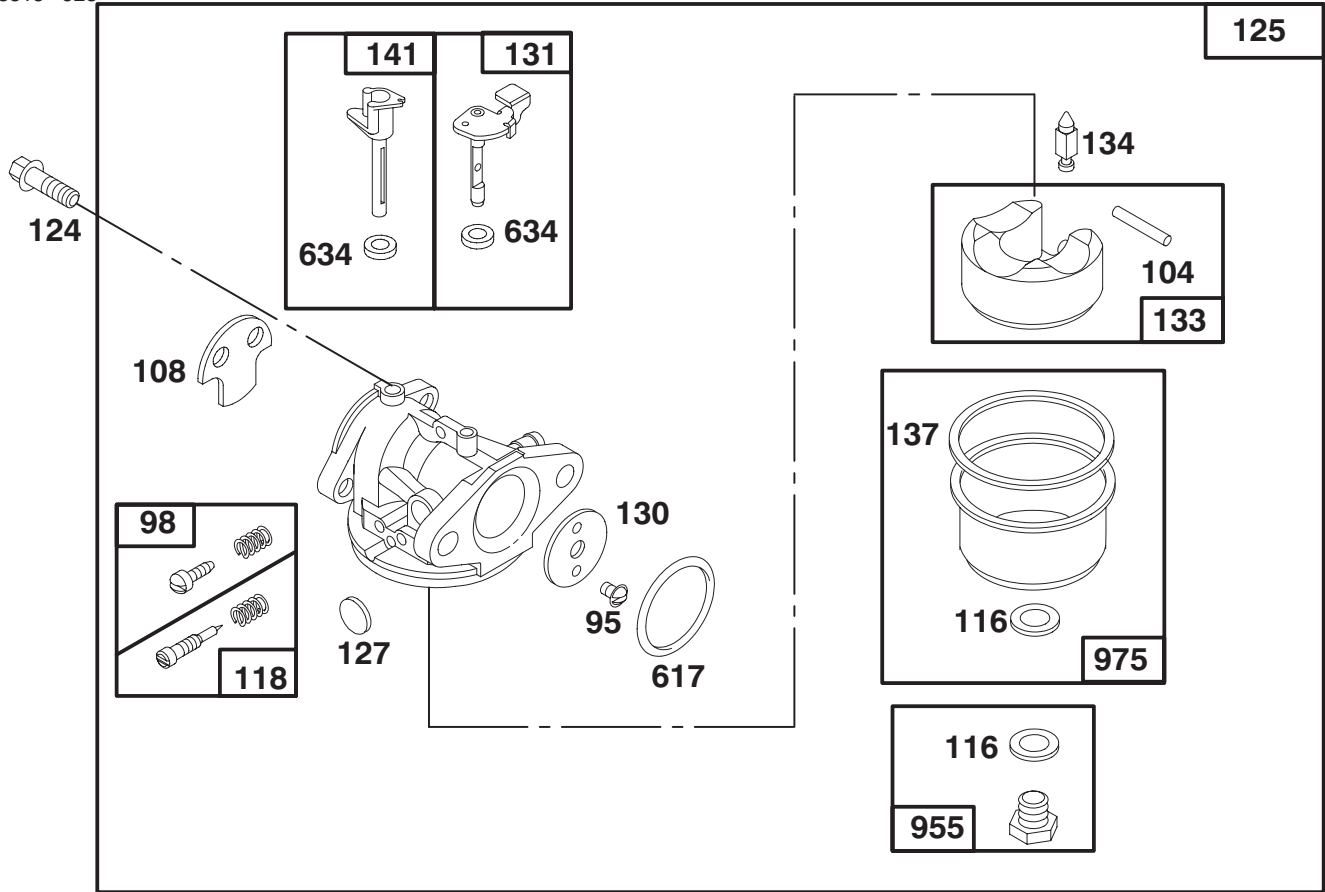
Assemblies include all parts shown in frames.

## ENGINE BRIGGS & STRATTON MODEL 124702-3115-01

Ref. No.	Part No.	Description	No. Used
★12	272198	Gasket-Crankcase	1
15	94720	Plug-Oil Drain	1
16	494546	Crankshaft	
		<b>Note:</b> Order 94388 For Timing Gear Key.	
18	493279	Sump-Engine	1
★20	399781	Seal-Oil	1
22	94220	Screw-Sump Mounting Sem	1
		<b>Note:</b> 94612 Screw-Hex. Head (One (1) Used in Hole Nearest Breather.)	1
24	222698	Key-Flywheel	1
25	493262	Piston Assy. (Standard)	1
	493385	Piston Assy. (.010" O.S.)	1
	493386	Piston Assy. (.020" O.S.)	1
	493387	Piston Assy. (.030" O.S.)	1
26	493261	Ring Set-Piston (Standard)	1
	493388	Ring Set-Piston (.010" O.S.)	1
	493389	Ring Set-Piston (.020" O.S.)	1
	493390	Ring Set-Piston (.030" O.S.)	1

Ref. No.	Part No.	Description	No. Used
27	26026	Lock-Piston Pin	1
28	298909	Pin Assembly-Piston (Standard)	1
	298908	Pin Assembly-Piston (.005" O.S.)	1
29	490566	Rod Assembly-Connecting	1
		<b>Note:</b> For Connecting Rod With .020" Undersize Crankpin Bearing-Order No. 490743	1
32	94405	Screw-Connecting Rod	1
33	262651	Valve-Exhaust	1
34	262652	Valve-Intake	1
35	262224	Spring-Valve	1
40	93312	Retainer-Valve Spring	1
45	262204	Tappet-Valve	1
46	492830	Gear-Cam	1
47	493737	Oil Slinger Gear and Bracket	1
741	262598	Gear-Timing	1

★ Included in Gasket Set-Part No. 493263.



Assemblies include all parts shown in frames.

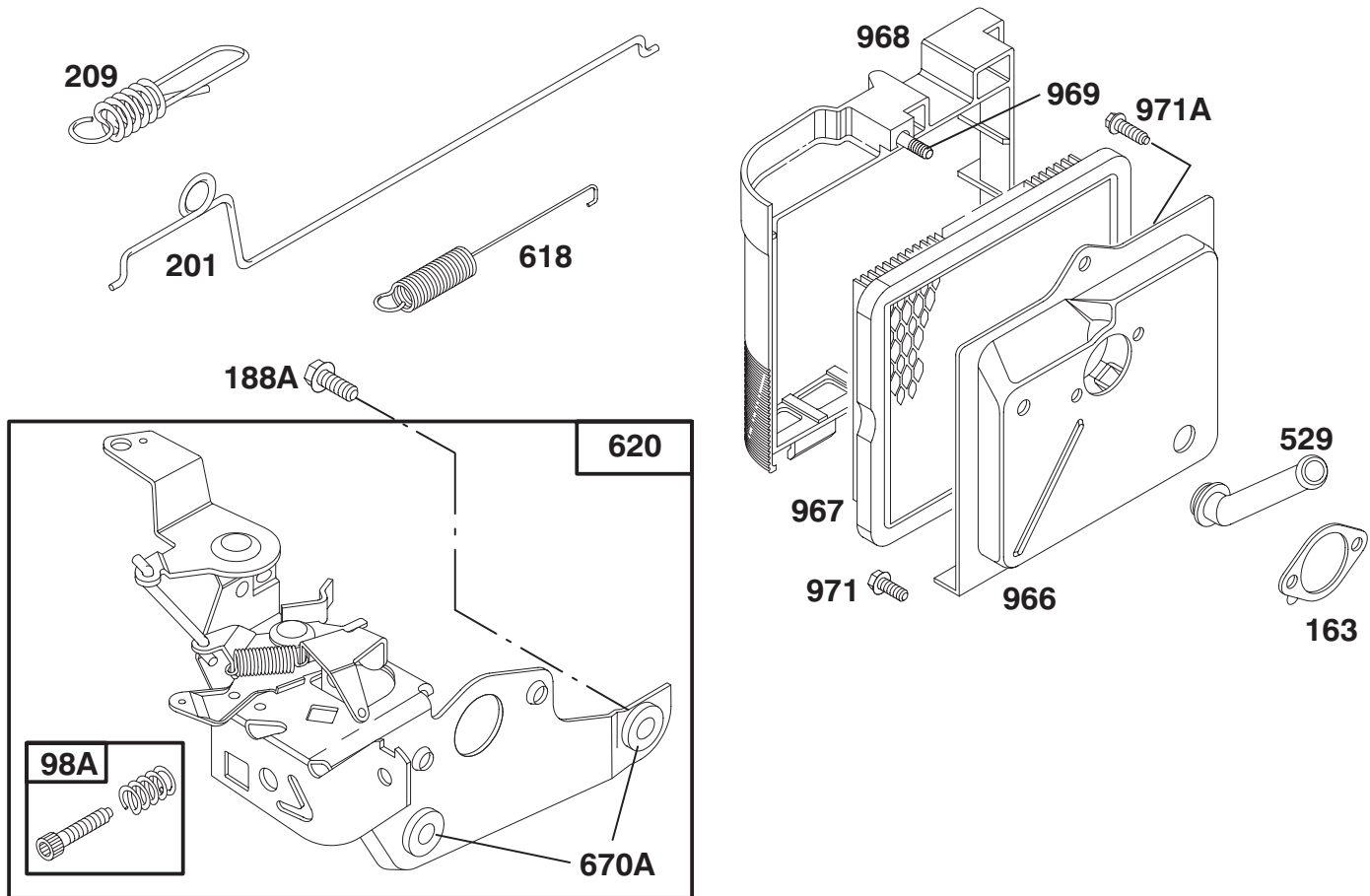
## ENGINE BRIGGS & STRATTON MODEL 124702-3115-01

Ref. No.	Part No.	Description	No. Used
95	94098	Screw—Throttle Valve Mtg.	1
98	398185	Screw—Idle Adjustment	1
●104	231371	Pin—Float Hinge	1
108	223471	Valve—Choke	1
◆◆116		Gasket—Sealing (Sold in Kit Only).	1
●118	493765	Valve and Spring— Needle	1
124	94525	Screw—Carburetor Mtg.	1
125	494217	Carburetor Assembly	1
●127		Plug—Welch (Sold in Kit Only).	1
130	223470	Valve—Throttle	1

Ref. No.	Part No.	Description	No. Used
131	493267	Shaft and Lever—Throttle	1
133	398187	Float Assy.—Carburetor	1
●134	398188	Valve—Inlet (Includes Seat)	1
◆◆137		Gasket—Bowl (Sold in Kit Only).	1
141	494218	Shaft—Choke	1
◆◆617	270344	Seal—Fuel Intake Tube	1
◆◆634		Washer—Shaft (Sold in Kit Only).	1
955	493869	Screw—Bowl Mtg.	1
975	493640	Bowl Assy.—Carburetor	1

● Included in Carburetor Overhaul Kit—Part No. 493762.

◆ Included in Carburetor Gasket Set—Part No. 490937.



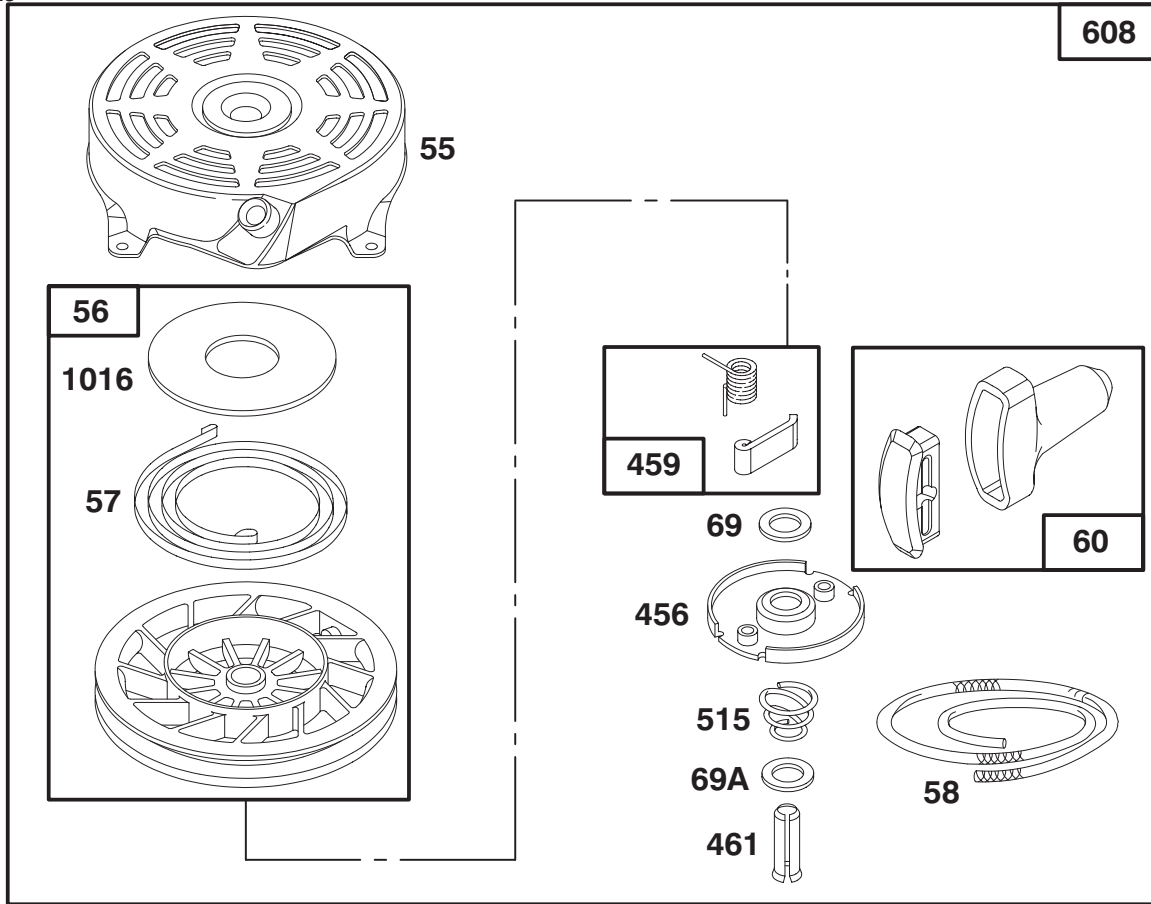
Assemblies include all parts shown in frames.

## ENGINE BRIGGS & STRATTON MODEL 124702-3115-01

Ref. No.	Part No.	Description	No. Used
98A	493280	Screw Assy. - Speed Adjust	1
★163	272296	Gasket - Air Cleaner	1
188A	94644	Screw - Hex. Head	1
201	262579	Link - Governor	1
209	262661	Spring - Governor	1
529	280943	Grommet - Breather	1
618	262749	Spring - Choke Return	1
620	493894	Bracket Assembly - Carburetor Control	1

Ref. No.	Part No.	Description	No. Used
670A	493823	Spacer - Carburetor Bracket	1
966	492363	Base - Air Cleaner	1
967	491588	Filter - Air	1
968	280937	Cover - Air Cleaner	1
969	94120	Screw - Cover Mtg.	1
971	94269	Screw - Air Cleaner	1
971A	94121	Screw - Base to Carb.	

★ Included in Gasket Set - Part No. 493263.

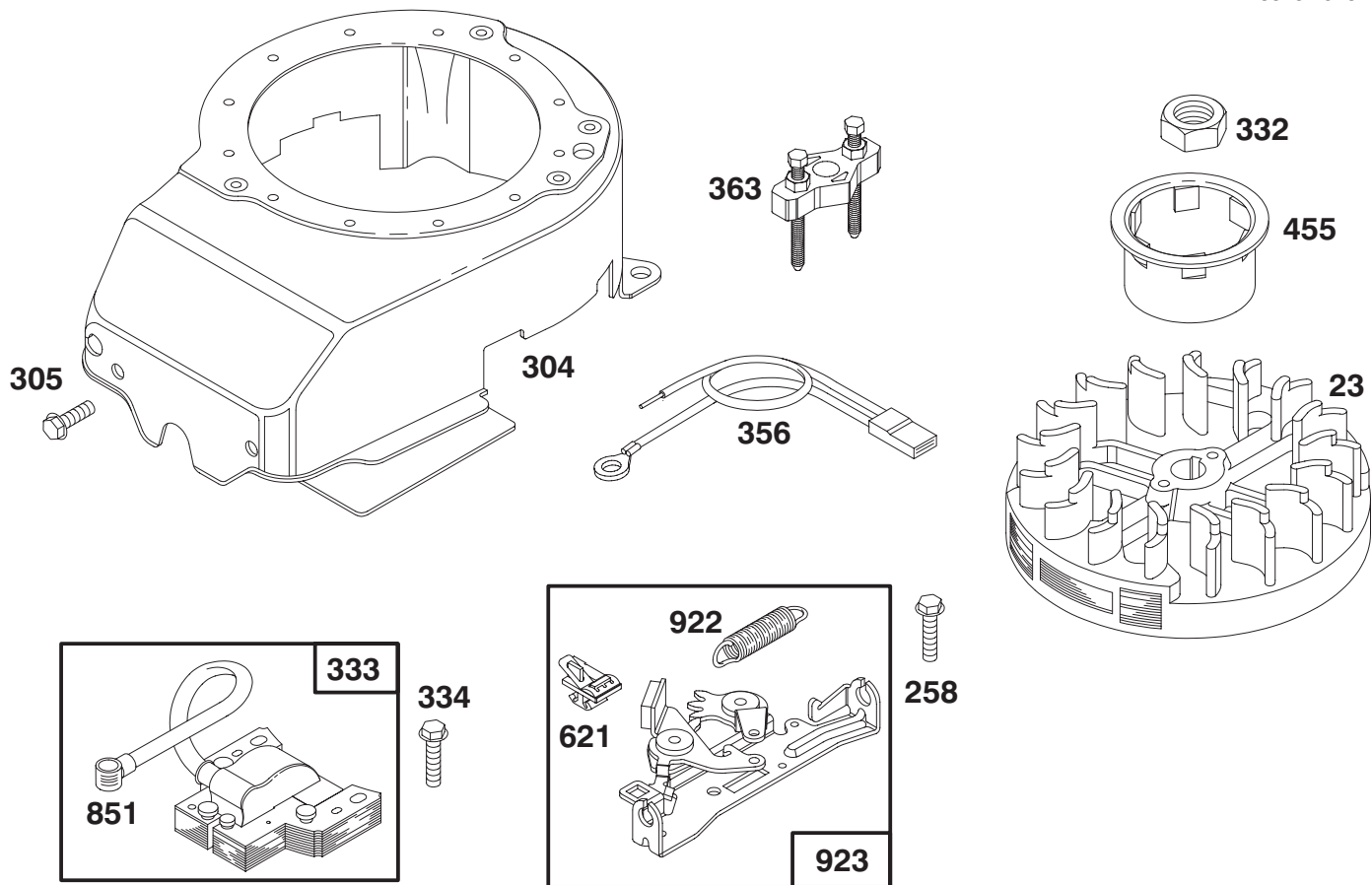


Assemblies include all parts shown in frames.

## ENGINE BRIGGS & STRATTON MODEL 124702-3115-01

Ref. No.	Part No.	Description	No. Used
55	492831	Housing—Rewind Starter	1
56	492832	Pulley—Rewind Starter	1
57	262594	Spring—Rewind Starter	1
58	280399	Rope—Rewind Starter	1
60	393152	Handle—Rewind Starter	1
69	280973	Washer—Rewind Starter	1
69A	224322	Washer—Rewind Starter	1
456	224321	Retainer—Rewind Starter	1

Ref. No.	Part No.	Description	No. Used
459	492833	Pawl—Starter	1
461	262626	Pin—Starter	1
515	262625	Spring—Torsion	1
608	493295	Starter Assy.—Rewind <b>Includes:</b> 94128 Screw—Hex. Head 92987 Nut—Hex.	1
1016	224278	Cover—Rewind Starter	1

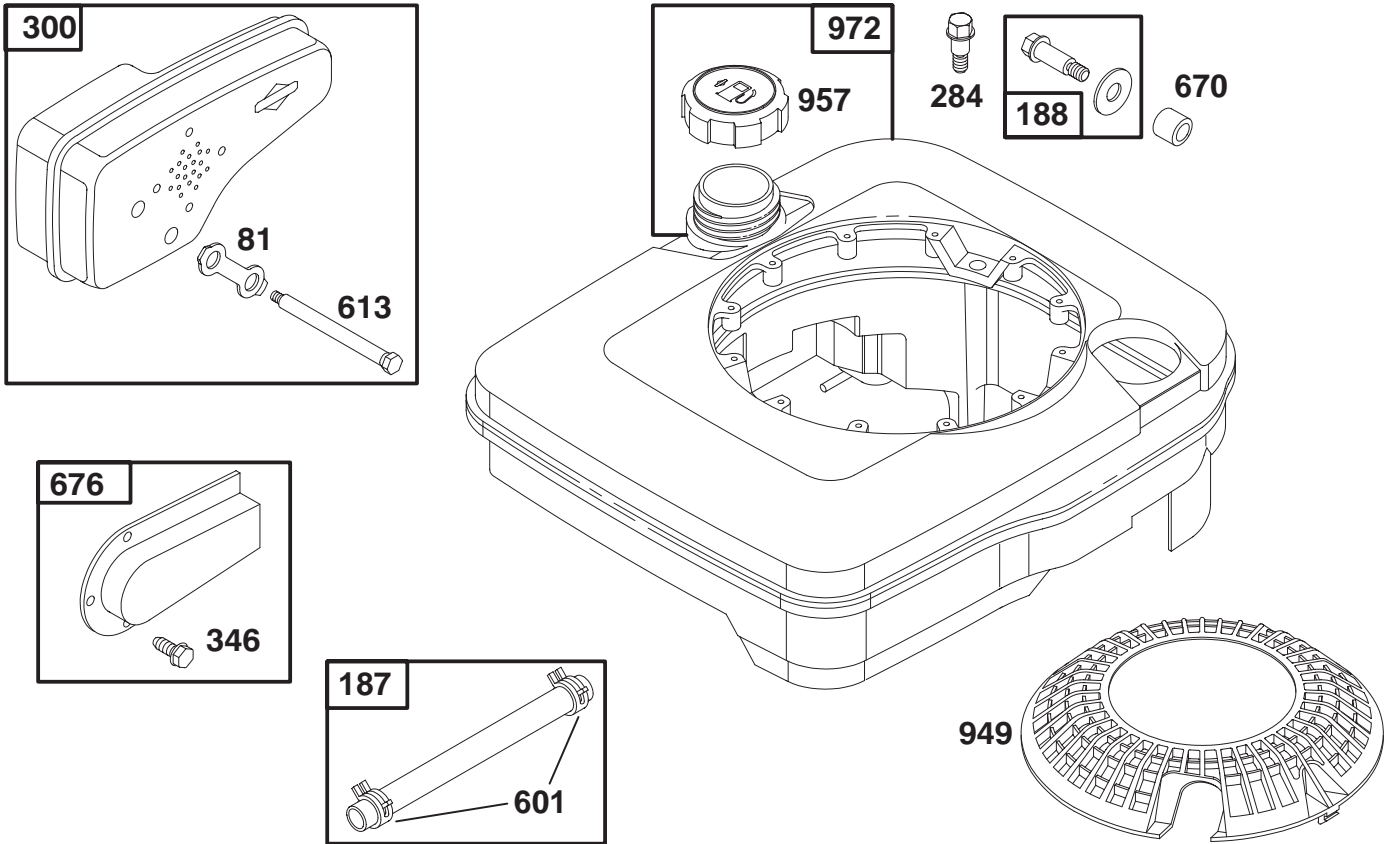


Assemblies include all parts shown in frames.

## ENGINE BRIGGS & STRATTON MODEL 124702-3115-01

Ref. No.	Part No.	Description	No. Used
23	492177	Flywheel-Magneto	1
258	94512	Screw-Hex. Head	1
304	493293	Housing-Blower	1
305	94729	Screw-Hex. Head Sem	1
332	92284	Nut-Flywheel	1
333	802574	Armature-Magneto	1
334	94731	Screw-Armature Mtg.	1

Ref. No.	Part No.	Description	No. Used
356	398808	Wire-Ground	1
363	19069	Puller-Flywheel	1
455	224250	Cup-Starter	1
621	396847	Switch-Stop	1
851	221798	Terminal-Ignition Cable	1
922	262640	Spring-Brake	1
923	492918	Brake Assembly	1

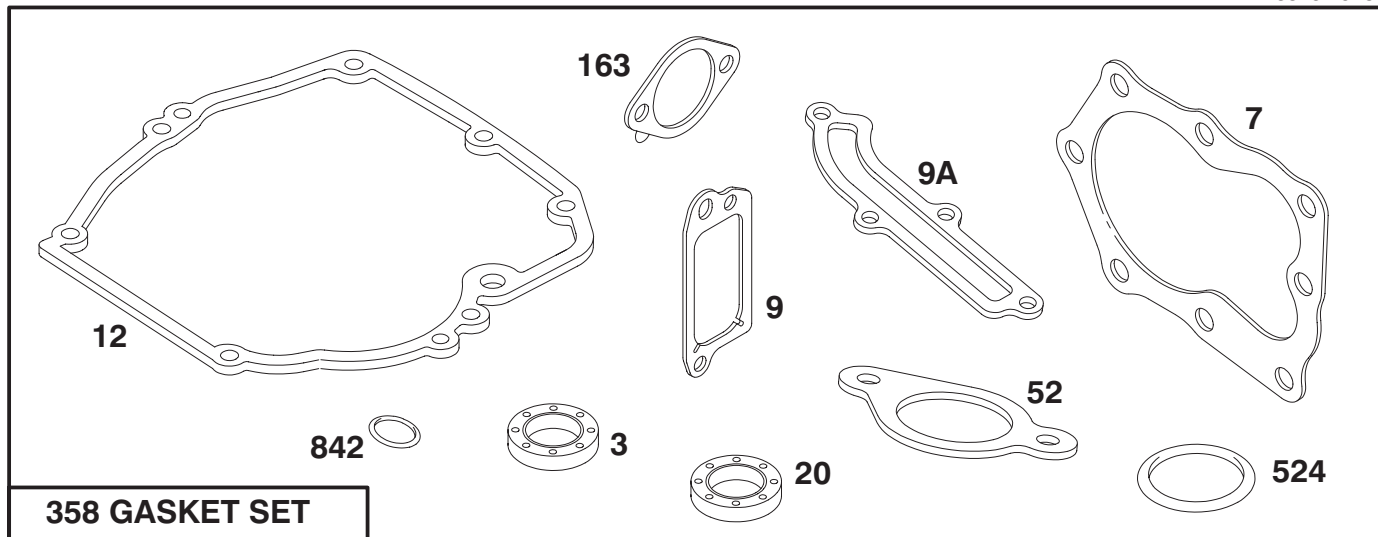


Assemblies include all parts shown in frames.

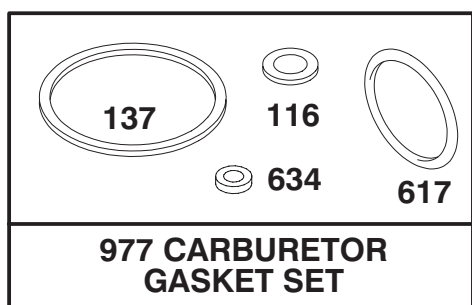
## ENGINE BRIGGS & STRATTON MODEL 124702-3115-01

Ref. No.	Part No.	Description	No. Used
81	223664	Lock-Muffler Screw	1
187	492790	Hose-Fuel (Cut To Suit)	1
188	398540	Screw-Tank Mounting (Includes Washer)	1
284	94511	Screw-Hex. Head	1
300	490547	Muffler-Exhaust	1
346	93705	Screw-Hex. Head	1

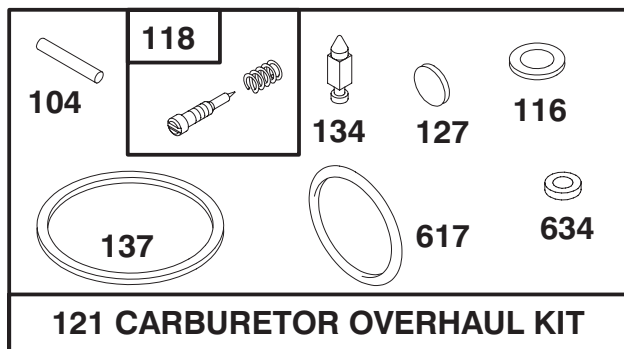
Ref. No.	Part No.	Description	No. Used
601	93807	Clamp-Hose	1
613	94231	Screw-Muffler Mtg.	1
670	280512	Spacer-Fuel Tank	1
676	493871	Deflector-Muffler	1
949	281136	Guard-Finger	1
957	397974	Cap Assy.-Fuel	1
972	494358	Tank Assembly-Fuel	1



**358 GASKET SET**



**977 CARBURETOR GASKET SET**



**121 CARBURETOR OVERHAUL KIT**

Assemblies include all parts shown in frames.

## ENGINE BRIGGS & STRATTON MODEL 124702-3115-01

Ref. No.	Part No.	Description	No. Used
★3	299819	Seal—Oil	1
★7	272200	Gasket—Cylinder Hd.	1
★9	272481	Gasket—Valve Cover	1
★9A	272238	Gasket—Baffle Plate	1
★12	272198	Gasket—Crankcase	1
★20	399781	Seal—Oil	1
★52	272199	Gasket—Intake Elbow	1
●104	231371	Pin—Float Hinge	1
◆◆116		Gasket—Sealing (Sold in Kit Only).	1
●118	493765	Valve and Spring—Needle	1
121	493762	Carburetor Overhaul Kit	1
●127		Plug—Welch (Sold in Kit Only).	1

Ref. No.	Part No.	Description	No. Used
●134	398188	Valve—Inlet (Includes Seat)	1
◆◆137		Gasket—Bowl (Sold in Kit Only).	1
★163	272296	Gasket—Air Cleaner	1
358	493263	Gasket Set	1
1★524	280393	Seal—Filler Tube	1
◆◆617	270344	Seal—Fuel Intake Tube	1
◆◆634		Washer—Shaft (Sold in Kit Only).	1
★842	280966	Seal—O-Ring	1
977	490937	Gasket Set—Carburetor	1

● Included in Carburetor Overhaul Kit—Part No. 493762.  
◆ Included in Carburetor Gasket Set—Part No. 490937.

★ Included in Gasket Set—Part No. 493263.

# TORO PART NUMBER INDEX (Cont.)

Part No.	Description	Pg. No.	Ref. No.	Qty.	Part No.	Description	Pg. No.	Ref. No.	Qty.
3-3287	Spacer	6	11	2	63-8701	Pivot Arm Assembly	4	2	2
14-4069	Cover Assembly	1	9	1	63-8721	Spring Arm Assembly	4	4	2
14-9419	Blade - 21	3	9	1	63-9060	Decal - Danger	6	4	1
14-9989	Wheel & Tire Assembly	1	29	2	65-2720	Ring - Retaining	4	24	4
16-0029	Wheel - Tire & Gear Ass'y	4	30	2	65-4710	Ring - Friction	4	25	2
16-1599	Housing Assembly	2	36	1	65-4720	Spring	4	28	2
16-1609	Panel - Control	6	1	1	65-4730	Thrust Washer	4	22	2
19-4050	Knob - Handle Release	6	18	2	65-4740	Thrust Washer	4	23	4
25-7740	Knob - Arm	4	3	2	65-4750	Pinion	4	1	2
25-7740	Knob - Spring Arm	1	2	2	65-4760	Washer - Clutch	4	26	2
26-0670	Screw - Blade	3	12	1	65-4770	Shaft - Output	4	18	1
27-6232	Bolt - Wheel	1	28	2	65-5250	Clip - Spring	5	61	1
27-6232	Wheel Bolt	4	32	2	66-0560	Screw - Pivot	1	26	2
27-6250	Bushing	1	27	4	66-0570	Guide - Belt	3	6	1
27-6250	Bushing - Wheel	4	31	4	66-0580-03	Arm - Pivot	2	31	2
27-7210	Screw - Shoulder	6	10	2	66-5351	Lever - Control	7	11	1
27-7211	Screw - Shoulder	6	9	2	66-6040	Key - Rocker R.H.	4	*	1
29-9570	Bushing - Yoke	4	37	1	66-6050	Key - Rocker L.H.	4	27	1
33-3208	Rod - Shield	1	23	1	70-9760	Bushing	4	19	2
36-4780	Washer - Thrust	4	42	1	71-0561	Spring Arm Ass'y - R.H.	1	1	1
36-4791	Washer - Thrust	4	46	2	71-0571	Spring Arm Ass'y - L.H.	2	33	1
37-7260	Screw - Special	1	13	2	71-3080	Bar - Control	7	13	1
38-7820	Bearing - Ball	5	58	1	74-1660	Cover - Wheel	4	29	2
39-5770	Decal - Danger	1	6	1	74-1670	Spacer - Wheel Cover	4	33	2
40-1940	Washer - Wheel	2	30	4	74-3894	Control - Throttle	6	5	1
42-3520	End Cap	4	5	2	76-0760	Key - Shift	4	40	2
44-0580	Shield - Rear	1	24	1	76-0770	Collar - Shift	4	41	1
46-5481	Cable - Traction	7	6	1	76-0780	Sleeve - Shift Key	4	39	1
46-5520	Lever - Traction	7	5	1	76-2712	Control - Ground Speed	6	2	1
46-6440	Cover - Control Cables	6	7	1	76-4330	Cable - Brake	7	7	1
46-6810	Screw - Hex Washer Hd.	1	8	1	77-0280	Shield - Heat	1	20	1
46-6811	Screw w/Washer	1	10	3	82-5531-05	Lower Handle Assembly	6	12	1
46-6980	Support - Cable	7	8	1	82-5680	Bracket - Traction Adj.	1	17	1
46-7030	Retainer - Cable	1	18	1	82-8450	Decal - Danger	1	11	1
48-2060	Needle Bearing	4	21	2	82-8780	Cable - Retainer	4	15	1
49-1630	Support - Spacer	7	2	2	84-8361	Latch - Handle L.H.	6	8	1
49-2040	Screw - Self Tapping	4	8	8	84-8401	Latch - Handle R.H.	6	24	1
49-2750	Pin - Handle	6	15	2	86-9671	Guide - Rope	6	21	1
52-7406	Belt Cover Assembly	1	19	1	91-2253	Cover - Wheel	2	37	1
55-3760	Gear - Pinion 15 Tooth	4	47	1	92-1599	Stiffener - Blade	3	10	1
55-3770	Gear - 49 Tooth 1st Gear	5	56	1	92-1720	Plate - Kicker Rt. Front	1	3	1
55-3780	Gear - Pinion 20 Tooth	4	48	1	92-1730	Plate - Kicker Rt. Rear	1	4	1
55-3790	Gear - 44 Tooth 2nd Gear	5	55	1	92-1750	Plate - Kicker Left Rear	1	12	1
55-3800	Gear - Pinion	5	49	1	92-2260	Screw - Handle	7	3	2
55-3810	Gear - 39 Tooth 3rd Gear	5	54	1	92-2260	Screw - Handle	6	16	2
60-8710	Gear Case - Upper	5	59	1	92-2269	Screw - Handle	7	4	1
60-8730	Cover - Gear Case	4	44	1	92-2278	Handle - Upper	6	3	1
60-8750	Bushing - Int. Shaft	4	45	2	92-2279	Decal - H.O.C.	1	25	4
60-8770	Bushing - Output Shaft	4	43	1	92-2281	Decal - Deck	2	35	1
60-8790	Sleeve - Gear	5	53	1	92-2282	Decal - Engine	3	1	1
60-8800	Shaft - Intermediate	5	50	1	92-2287	Decal - Instruction	6	23	1
60-8810	Retainer - Shift Fork	4	38	1	92-3146	Decal - Front Panel	6	19	1
60-8821	Lever - Shift	4	17	1	2210-249	Clamp - Casing	3	4	1
60-8840	Pulley - Half	4	10	2	2210-313	Screw - Clamp	3	5	1
60-8850	Bushing - Output Shaft	5	51	1	2210-316	Stop - Rope	3	2	1
60-8870	Yoke - Shift	4	36	1	237-153	O-Ring	5	60	2
60-8890	Pinion - Bevel	5	57	1	2412-50	Clip Convoluted Tubing	6	6	4
62-3720	Clamp - Cable	1	22	1	302-56	Fitting - Grease	4	20	2
62-3900	V-Belt	4	13	1	321-39	Screw - Hex Hd. Cap	7	1	1
62-4320	Bracket - Belt Guide	4	7	1	3253-22	Washer - Lock	3	11	1
62-6660	Spacer	4	9	1	3256-1	Washer - Flat	7	9	1
62-6673	Gear Case Assembly	5	*	1	3256-24	Washer - Flat	4	12	1
62-7540	Retainer - Blade	3	13	1	3272-10	Pin - Cotter	4	14	1
62-7550	Pulley - Driver	3	14	1	3290-378	Tie - Cable	1	15	1

\*Not Illustrated

# TORO PART NUMBER INDEX (Cont.)

3315-928

Part No.	Description	Pg. Ref.			Part No.	Description	Pg. Ref.		
		No.	No.	Qty.			No.	No.	Qty.
3290-378	Tie - Cable	6	17	2	32144-85	Screw	4	35	2
3295-35	Rivet	1	21	2	32144-85	Screw - Hex Hd. Cap	2	34	2
3296-5	Locknut	4	11	1	32144-102	Screw - Thread Forming	3	8	3
3296-6	Locknut	4	34	2	32144-111	Screw - Pan Hd.	1	5	6
3296-6	Nut - Lock	2	32	4	32144-115	Screw - Self Tap Slotted	6	20	5
3296-47	Nut - Lock	6	14	3					
3296-72	Nut - Lock	6	13	3					
3296-73	Nut - Lock	7	10	2					
3296-73	Nut - Lock	6	22	1					
3296-74	Nut - Lock	7	12	2					
32121-120	Pin - Coil	5	52	1					
32144-70	Screw - Hex Washer Hd.	1	16	2					
32144-70	Screw - Thread Forming	3	7	2					
32144-70	Screw - Thread Forming	4	16	1					

**OPTIONAL EQUIPMENT**

- Recycler Side Discharge Kit . . . . Model No. 59189
- Wear Plate Kit . . . . . Part No. 49-4080
- Recycler Bagging Kit . . . . . Model No. 59174
- Dethatcher Kit . . . . . Model No. 59131

\*Not Illustrated





