



Comb and Scraper Kit

For Reelmaster® 5010 Series Cutting Unit

Model No. 110-1735

Form No. 3360-637 Rev A

Installation Instructions

Note: Determine the left and right sides of the machine from the normal operating position.

Loose Parts

Use the chart below to verify that all parts have been shipped.

Procedure	Description	Qty.	Use
1	Comb bracket	1	Installing the comb and scraper kit.
	Comb scraper	1	
	Comb plate	1	
	Comb	1	
	Carriage bolt (1/4 x 1 inch)	4	
	Locknut (1/4 inch)	4	
	Flat washers (if required)	8	
2	Installation Instructions	1	Read the documentation and store it in a safe location.
	Parts Catalog	1	

1

Installing the Comb and Scraper Kit

Parts needed for this procedure:

1	Comb bracket
1	Comb scraper
1	Comb plate
1	Comb
4	Carriage bolt (1/4 x 1 inch)
4	Locknut (1/4 inch)
8	Flat washers (if required)

Procedure

- Place the mower on a level surface.
- Remove the bolt and flange nut securing each end of front roller to roller brackets. Discard the bolts and flange nuts.
- Thread a flange nut onto each bolt as shown in Figure 1.

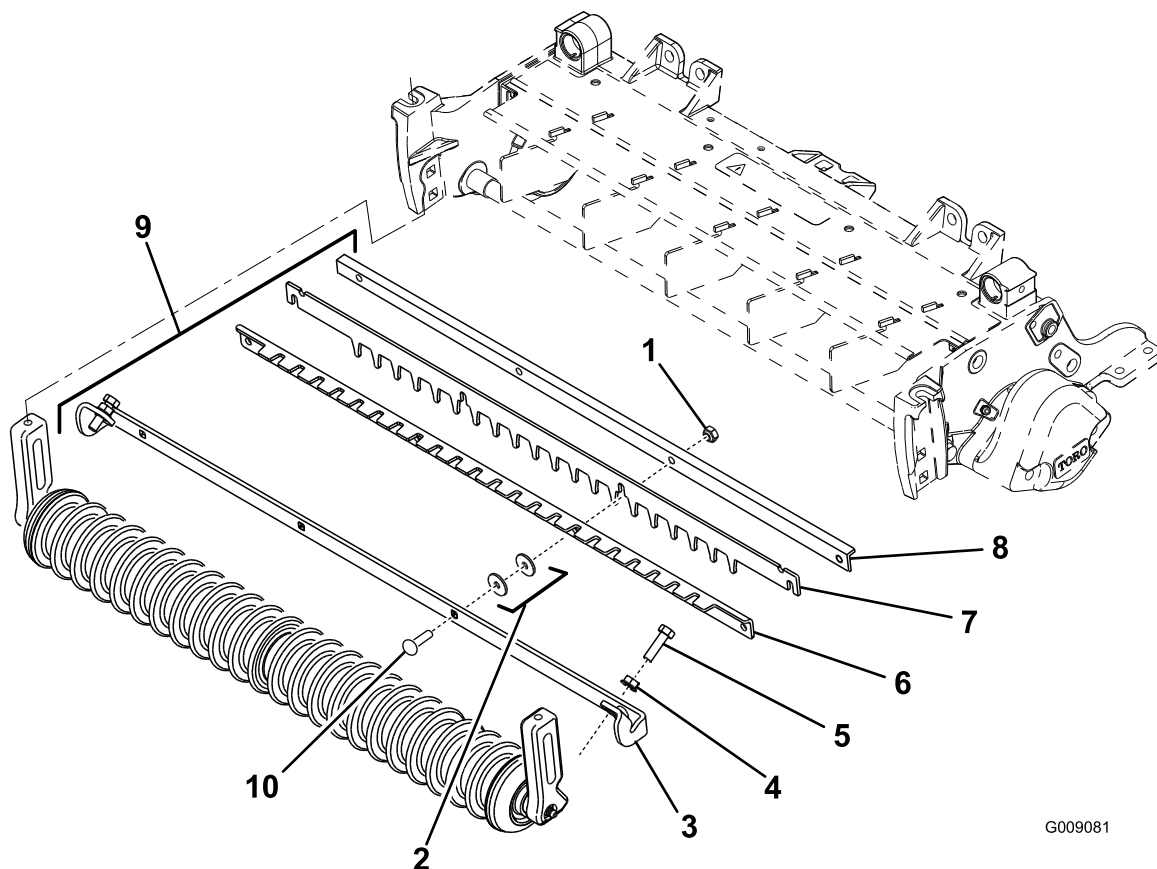
Note: The comb/scraper assembly is loosely assembled at the factory. Do not tighten the locknuts at this time.

- Mount each end of the comb bracket to the top of each roller bracket with a flange nut and bolt as shown in Figure 1.

Note: If the scraper is not required, remove it from the assembly. When reassembling the components, insert 2 washers onto each bolt so they act as spacers between the comb bracket and comb plate (Figure 1). The washers are shipped loose.

- Make sure the roller and comb assembly are secure and centered in the roller brackets, then tighten the flange nuts on the bolts.
- Using a gauge bar and ruler, set the comb aggressiveness to meet your turf conditions. Secure the locknuts.
 - Recommended height of cut range is 0.375 inch to 0.75 inch.
 - Less aggressive setting = Height of Cut Setting
 - More aggressive setting = 1/8 inch Below Height of Cut Setting

Note: It may require a few weeks of operation to remove excess grain in turf.



G009081

Figure 1

- | | | | |
|-------------------------------|-----------------|----------------------------|----------------------------------|
| 1. Locknut (1/4 inch) | 4. Flange nut | 7. Comb plate | 10. Carriage bolt (1/4 x 1 inch) |
| 2. Flat washers (if required) | 5. Bolt | 8. Comb | |
| 3. Comb bracket | 6. Comb scraper | 9. Comb & scraper assembly | |

2

Reading/Storing the Documentation

Parts needed for this procedure:

1	<i>Installation Instructions</i>
1	<i>Parts Catalog</i>

Procedure

1. Read the documentation.
2. Store the documentation in a safe place.