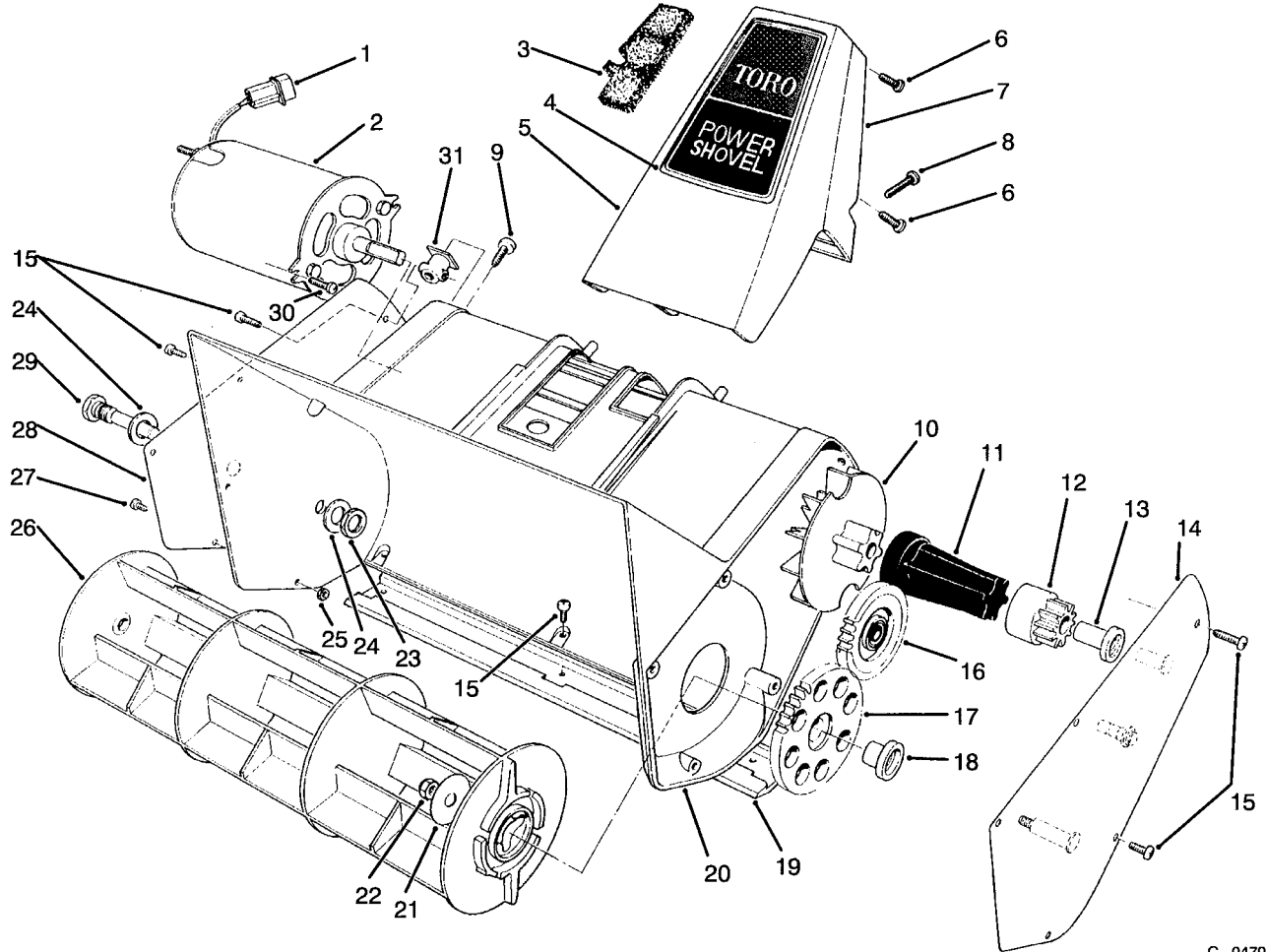




MODEL NO. 38310-3900001 4900001 & UP	PARTS CATALOG
TORO POWER SHOVEL	

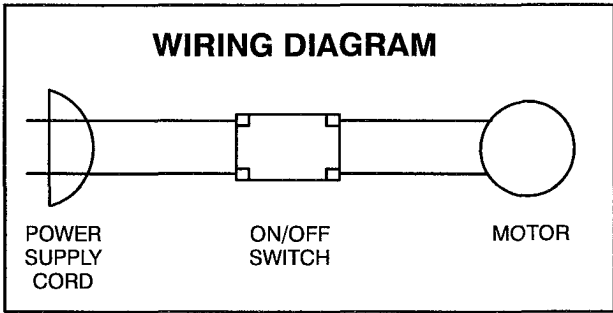
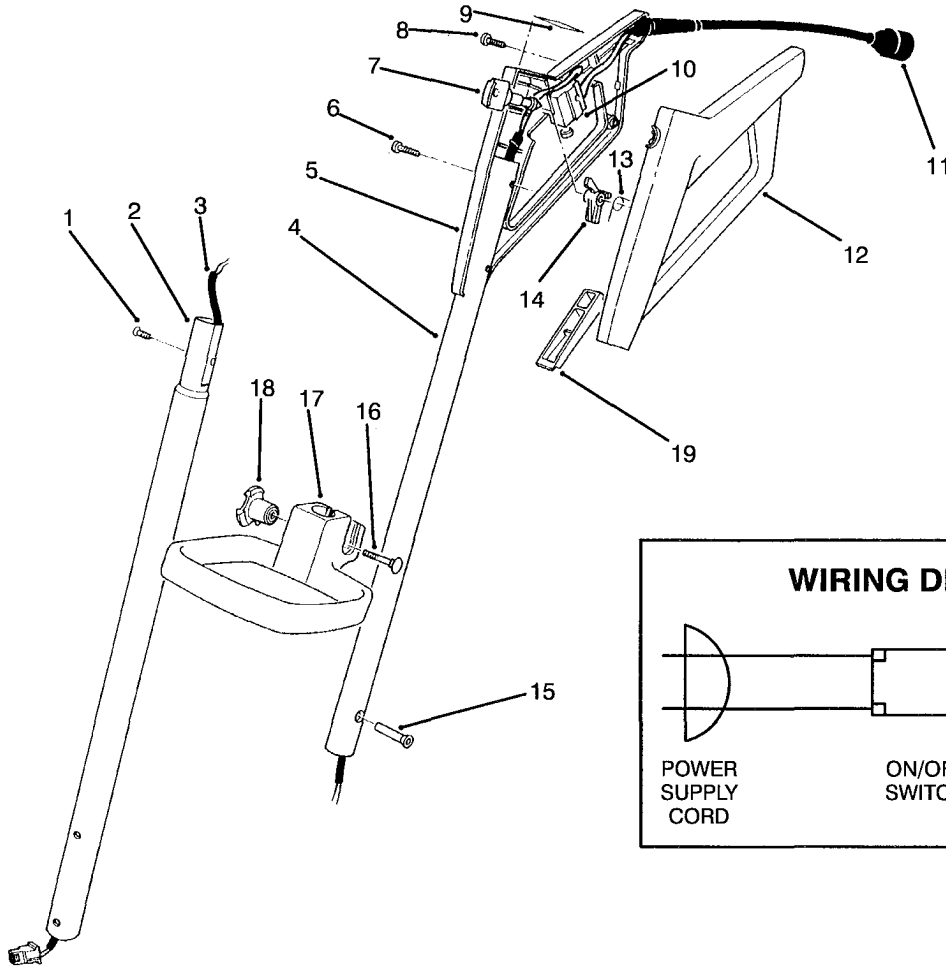


C-0479A

ROTOR HOUSING ASSEMBLY

Ref. No.	Part No.	Description	No. Used
1	218-551	Housing - Pin	1
2	53-4401	Motor - (Incl. ref.# 1)	1
3	42-0050	Filter - Foam	1
4	41-9840	Decal - Handle Support	1
5	64-8830	Handle Support - Front	1
6	32104-121	Screw - Pan Head	6
7	64-8840	Handle Support - Back	1
8	3250-20	Screw - Pan Hd.	2
9	32144-66	Screw - Phillips Head	2
10	41-9820	Fan	1
11	38-8570	Coupling - Drive	1
12	42-0240	Drive Gear (Incl. ref.# 13)	1
13	42-0010	Bushing - Drive Gear	1
14	53-9300	Gear - Carrier	1
15	32104-118	Screw - Pan Head	10
16	56-6770	Idler Gear Assembly	1

Ref. No.	Part No.	Description	No. Used
17	42-0230	Rotor Gear Assembly (Incl. ref.# 18)	1
18	41-9890	Bushing - Rotor	1
19	73-1650	Scraper	1
20	53-9382	Housing	1
21	42-0070	Washer - Rotor	1
22	3296-13	Nut - Lock	1
23	32152-8	Nut - Lock	1
24	3256-24	Washer - Flat	2
25	3296-54	Nut - Lock, Thin	2
26	38-8170	Rotor	1
27	3250-19	Screw - Pan Head	2
28	41-9960	Cover - Right Side	1
29	38-8210	Pin - Rotor	1
30	32144-36	Screw - Pan Head	2
31	53-9390	Block - Mounting	2



C-0480

HANDLE ASSEMBLY

Ref. No.	Part No.	Description	No. Used
1	73-4360	Screw - Shoulder	1
2	64-8810	Tube - Lower Handle	1
3	64-8800	Wire Harness	1
4	64-8820	Tube - Upper Handle	1
5	42-2831	Grip - Control R.H.	1
6	32104-121	Screw - Pan Head	4
7	38-8310	Key	1
8	32104-118	Screw - Pan Head	1
9	38-8340	Decal - Control Grip	1
10	36-8340	Switch	1

Ref. No.	Part No.	Description	No. Used
11	42-0775	Cord - Supply	1
12	42-2841	Grip - Control L.H.	1
13	38-8330	Spring	1
14	41-9870	Lockout	1
15	73-4350	Nut - Countersunk	1
16	33-5790	Bolt - Carriage	1
17	61-8901	Handle - Adjustable	1
18	73-4740	Knob	1
19	42-2870	Switch Bar	1
*	60-9652	Loose Parts	1

*Not Illustrated