



Reelmaster®5210/5410/5510/5610

Two-Wheel Drive Traction Units

Model No. 03660—Serial No. 280000801 and Up

Model No. 03670—Serial No. 280000801 and Up

Model No. 03680—Serial No. 280000801 and Up

Model No. 03690—Serial No. 280000801 and Up

Addendum

Installing the Cutting Units

Reposition the Turf Compensation Springs and Install the Hose Guides

1. All the cutting units are shipped with the turf compensation spring mounted to the right side of the cutting unit. The turf compensation spring must be mounted to the same side of the cutting unit as the reel drive motor. Reposition the turf compensation as follows:
 - A. Remove the 2 carriage bolts and nuts securing the rod bracket to the cutting unit tabs (Figure 1).

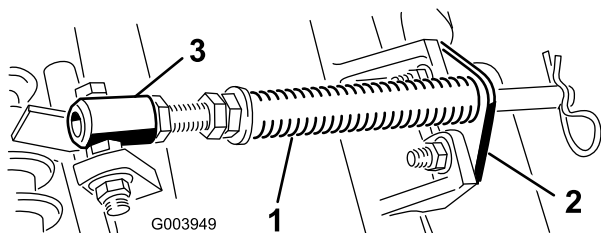


Figure 1

1. Turf compensation spring
2. Rod bracket
3. Spring tube

- B. Remove the flange nut securing the spring tube capscrew to the carrier frame tab (Figure 1) Remove the assembly.
 - C. Mount the spring tube capscrew to the opposite tab on the carrier frame and secure with the flange nut. The capscrew head is to be positioned to the outer side of the tab as shown in Figure 2.

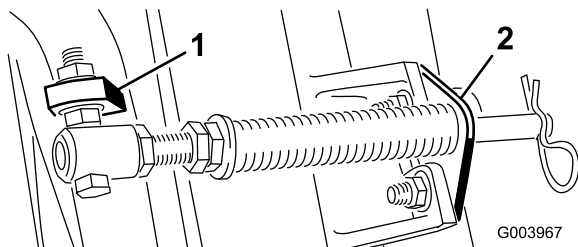


Figure 2

1. Opposite carrier frame tab
2. Rod bracket

- D. Mount the rod bracket to the rear of the cutting unit tabs with the carriage bolts and nuts (Figure 2). Also, on the #4 cutting unit, mount the left hand hose guide to the front of the cutting unit tabs when reinstalling the rod bracket (Figure 3).

Note: On the #5 cutting unit, use the rod bracket mounting nuts to install the right hand hose guide to the front of the cutting unit tabs.

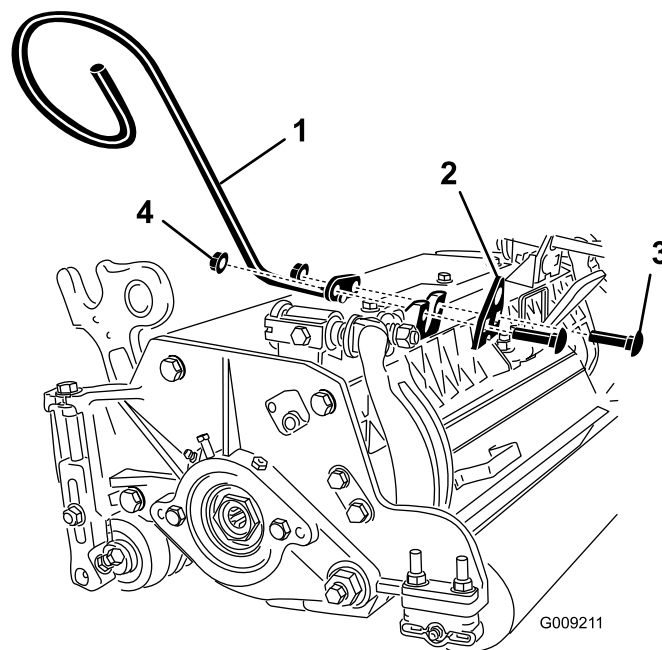


Figure 3

1. Hose guide (Left hand shown)
2. Rod bracket
3. Carriage bolts
4. Nuts

Note: When installing or removing the cutting units, make sure the hairpin cotter is installed in the spring rod hole next to the rod bracket. Otherwise, the hairpin cotter must be installed in the hole in the end of the rod.