



DH 200 Lawn Tractor

Model No. 74571 - 250000001 and up.

Parts Catalog

Ordering Replacement Parts

To order replacement parts, please supply the part number, the quantity, and the description of each part desired.

Understanding Reference Numbers

Each Identified part in an illustration has a reference number. The reference number for a part also appears in the parts list, along with other information about the part.

This catalog uses two special reference number formats, one to indicate parts in a service assembly and another to indicate the quantity of a given part in an illustration.

Service Assembly Reference Numbers

Parts in service assemblies have reference numbers in the form a:b. The a represents the reference number of the entire service assembly and the b represents a sequential number unique to each part within the service assembly.

For example, a wheel assembly might be identified by reference number 6, the tire by 6:1, the valve by 6:2, and the wheel by 6:3. When you order the assembly identified by reference number 6, you receive all parts identified by reference numbers 6:1, 6:2, and 6:3. However, you may also order any part individually. Reference numbers of this type appear in illustrations and in part lists.

Reference Numbers Indicating Quantity

In an illustration, if a reference number indicates more than one part, the reference number has the form nX y. The n represents the quantity of the part, the X is the multiplication symbol, and the y represents the reference number.

For example, in an illustration, the reference number 2X 37 means that two of the parts identified by reference number 37 are indicated.

Contents

Description	Page	Description	Page
Frame and Seat Assembly 4	Center Case Assembly Transmission	
Front Axle Assembly 6	Assembly No. 104-2889 23
Steering Assembly 7	Pump Shaft Assembly Transmission	
Body and Hood Assembly 8	Assembly No. 104-2889 24
Engine, Muffler and Fuel Tank Assembly 9	Grass Collector Assembly No. 106-5760 25
Operation, Brake and Bypass Assembly 10	Collector Assembly 26
Operation and Travel Pedal Assembly 11	Cutting Pan, Mower Housing Assembly 27
Transmission Drive Assembly 12	Cutting Pan and Bag on Demand Assembly 28
Control Shaft Assembly Transmission		Cutting Pan and Drive System Assembly 29
Assembly No. 104-2889 14	Mower Lift Assembly 31
Motor Shaft Assembly Transmission		Electrical Assembly 32
Assembly No. 104-2889 15	Electrical Switch No. 1 Assembly 33
Transaxle Case Assembly Transmission		Electrical Switch Assembly No. 2 34
Assembly No. 104-2889 16	Electrical Switch No. 3 Assembly 35
Differential Gear Assembly Transmission		Cylinder, Crankshaft and Piston Assemblies	
Assembly No. 104-2889 17	Briggs and Stratton 282H79-23502 36
Final Pinion Assembly Transmission		Cylinder Head Assembly Briggs and Stratton	
Assembly No. 104-2889 18	282H79-23502 37
Axle Shaft Assembly Transmission Assembly		Carburetor Assembly Briggs and Stratton	
No. 104-2889 19	282H79-23502 38
Brake Assembly Transmission Assembly No.		Blower Housing Assembly Briggs and Stratton	
104-2889 20	282H79-23502 39
Fan Pulley Assembly Transmission Assembly		Flywheel Assembly Briggs and Stratton	
No. 104-2889 21	282H79-23502 40
Range Shift Assembly Transmission		Starter and Electrical Assembly Briggs and	
Assembly No. 104-2889 22	Stratton 282H79-23502 41
		Gasket Assembly Briggs and Stratton 282H79-	
		23502 43

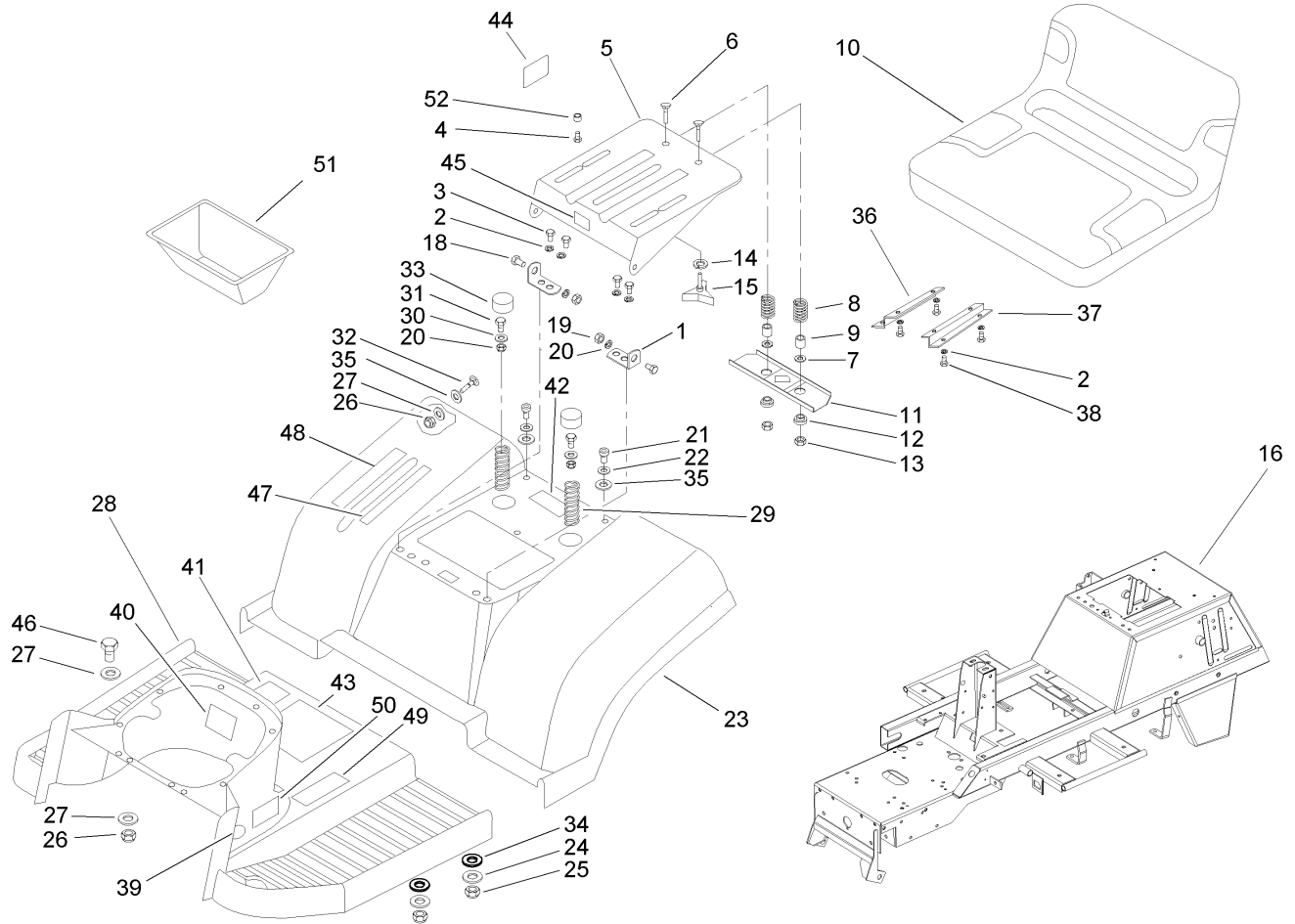
Part Description Abbreviations

Part descriptions in this catalog may include the following abbreviations.

AR.	as required	HYD.	hydraulic
ASM.	assembly	LH.	left hand
BBC.	blade brake clutch	NI.	nylon insert
CARR.	carriage	NPTF.	national pipe thread fine
DEG.	degrees	PFH.	phillips flat head
EXT.	external	PPH.	phillips pan head
FH.	flat head	PPHTF.	phillips pan head thread forming
GA.	gauge	PRH.	phillips round head
HD.	heavy-duty	PTH.	phillips truss head
HF.	hex flange	PTO.	power-take-off
HH.	hex head	RH.	right hand
HHF.	hex head flange	ROPS.	roll-over protection system
HHFTF.	hex head flange thread forming	SFH.	slotted fillister head
HJ.	hex jam	SHH.	slotted hex head
HLH.	hex lag head	SHWH.	slotted hex washer head
HOC.	height-of-cut	SPH.	slotted pan head
HSBH.	hex socket button head	SQH.	square head
HSFH.	hex socket flat head	SRH.	slotted round head
HSH.	hex socket head	STD.	standard
HWH.	hex washer head	TAP.	self tapping
HWHTF.	hex washer head thread forming	TTH.	torx truss head

Footnotes

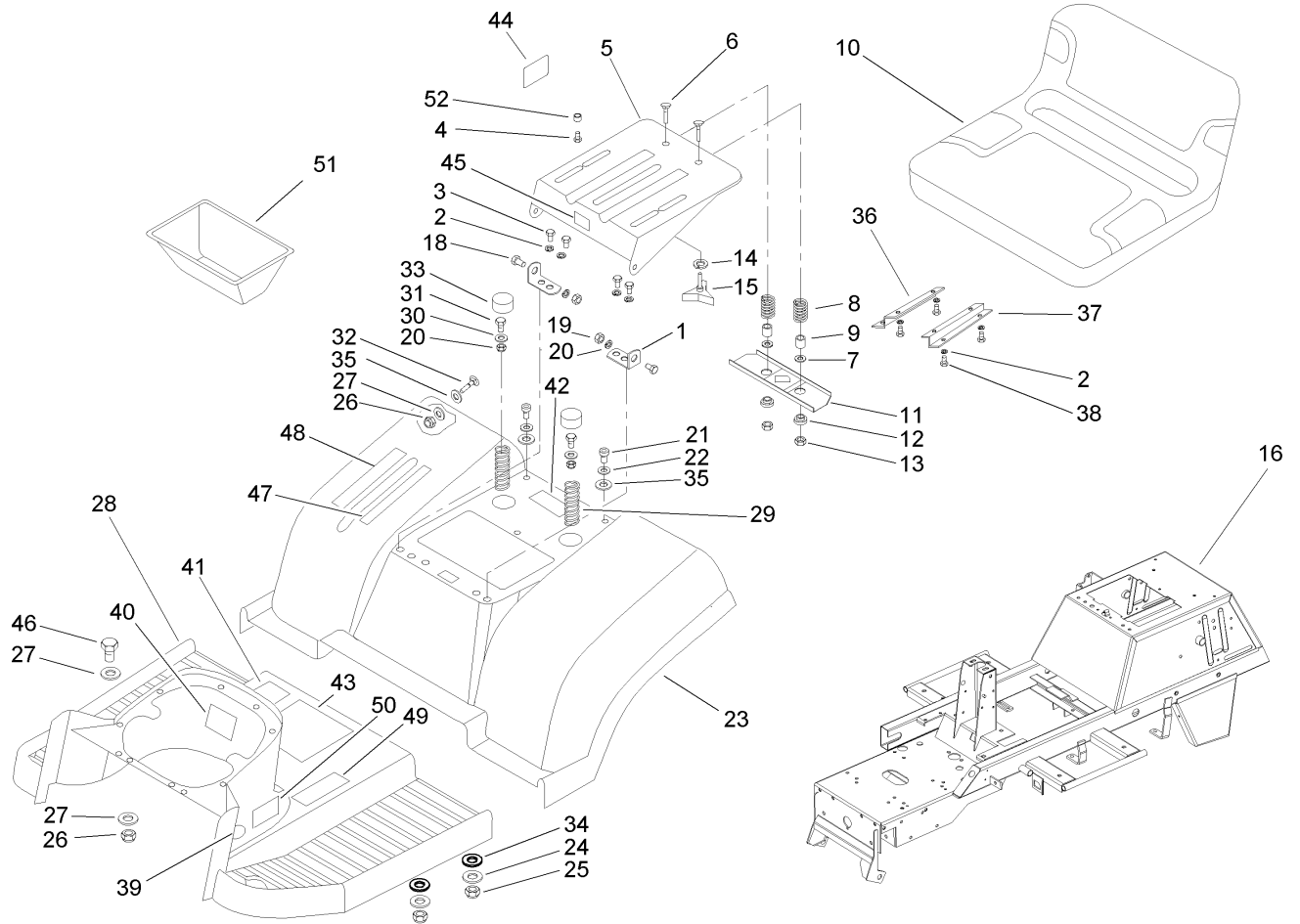
- | | | | |
|---|---|---|---|
| ❶ | Not serviced separately | ❷ | Included in Engine Gasket Set-Ref. 358. |
| ❸ | Included in Valve Gasket Set-Ref. 1095. | ❹ | Included in Carburetor Overhaul Kit-Ref. 121. |
| ❺ | Included in Carburetor Gasket Set-Ref. 977. | ❻ | Obtain from your local Briggs & Stratton dealer |



Frame and Seat Assembly

Ref	Part No.	Qty.	Description
1	104-2926	2	Bracket-Support, Seat
2	42-9850	8	Washer-Lock, Spring
3	33114-025	10	Screw-HH
4	322-3	2	Screw-HH
5	104-2929	1	Support-Seat
6	104-2930	2	Bolt-Carriage
7	104-2931	2	Washer-Flat
8	104-2932	2	Spring-Seat
9	104-2933	2	Spacer-Split
10	107-2214	1	Seat ASM
11	104-2934	1	Bracket
12	104-2935	2	Bushing
13	33023-00	2	Nut-Lock
14	104-2936	2	Washer-Spring
15	104-2937	2	Knob-Adj.
16	107-8948	1	Chassis-Frame
18	104-2939	2	Screw-Support, Seat
19	33094-00	6	Washer-Plain
20	33024-00	8	Nut-Lock
21	104-2940	2	Screw-HSFH
22	104-2941	2	Washer-Finish
23	106-5752	1	Fender
24	33095-00	4	Washer-Flat
25	33025-00	4	Nut-Lock

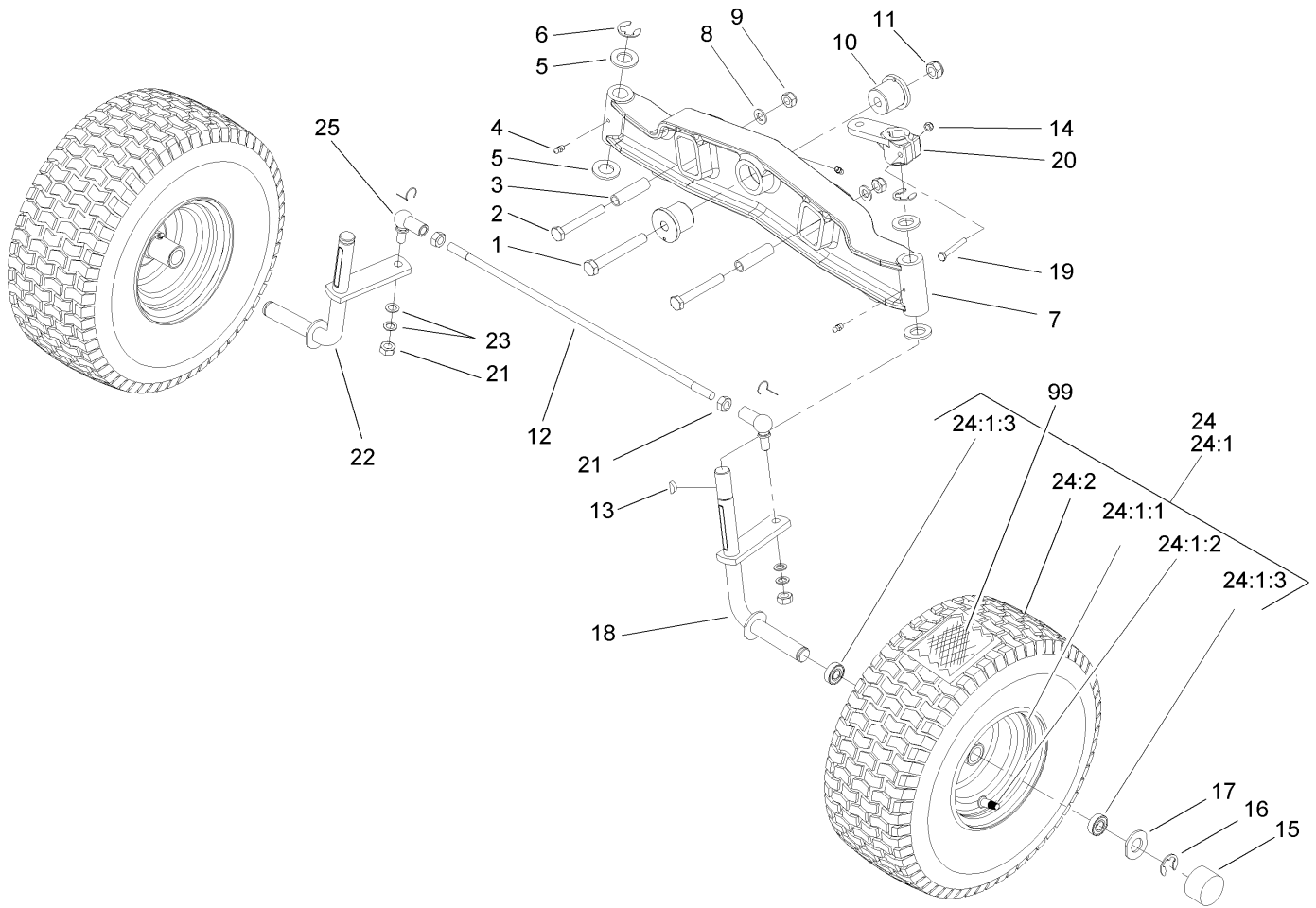
Ref	Part No.	Qty.	Description
26	87-5140	6	Nut-Lock
27	104-2943	6	Washer-Flat
28	104-2944	1	Footrest ASM
29	104-2945	2	Spring-Seat
30	104-2946	6	Washer-Plain
31	33114-020	2	Screw-HH
32	104-2948	6	Bolt-Carriage
33	104-2857	2	Cap-Hub
34	104-2951	2	Washer-Rubber
35	104-2952	2	Washer-Rubber
36	107-8915	1	Bracket-Seat, RH
37	107-8916	1	Bracket-Seat, LH
38	104-3195	4	Screw
39	104-3237	1	Decal-Brake, Parking
40	104-3238	1	Decal-Starting
41	104-3241	1	Decal-Operation, Hydro
42	104-3242	1	Decal-Bag To Frame
43	104-2903	1	Decal-Instruction
44	99-5340	1	Decal-Switch
45	93-7276	1	Decal-Danger
46	60-6910	6	Screw
47	104-3239	1	Decal-HOC, LH
48	104-3240	1	Decal-HOC, RH
49	106-8552	1	Decal-Operation



Frame and Seat Assembly (continued)

Ref	Part No.	Qty.	Description
50	107-8974	2	Decal-Tower
51	106-5756	1	Box-Battery
52	107-8924	2	Shim-Seat

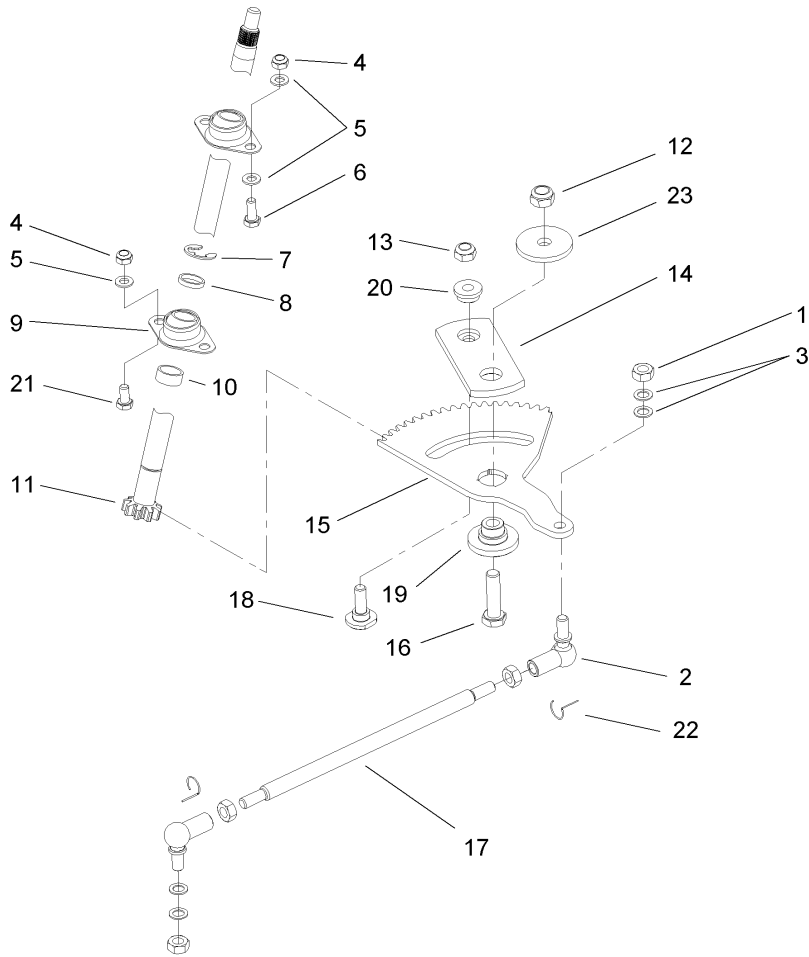
--	--	--	--



Front Axle Assembly

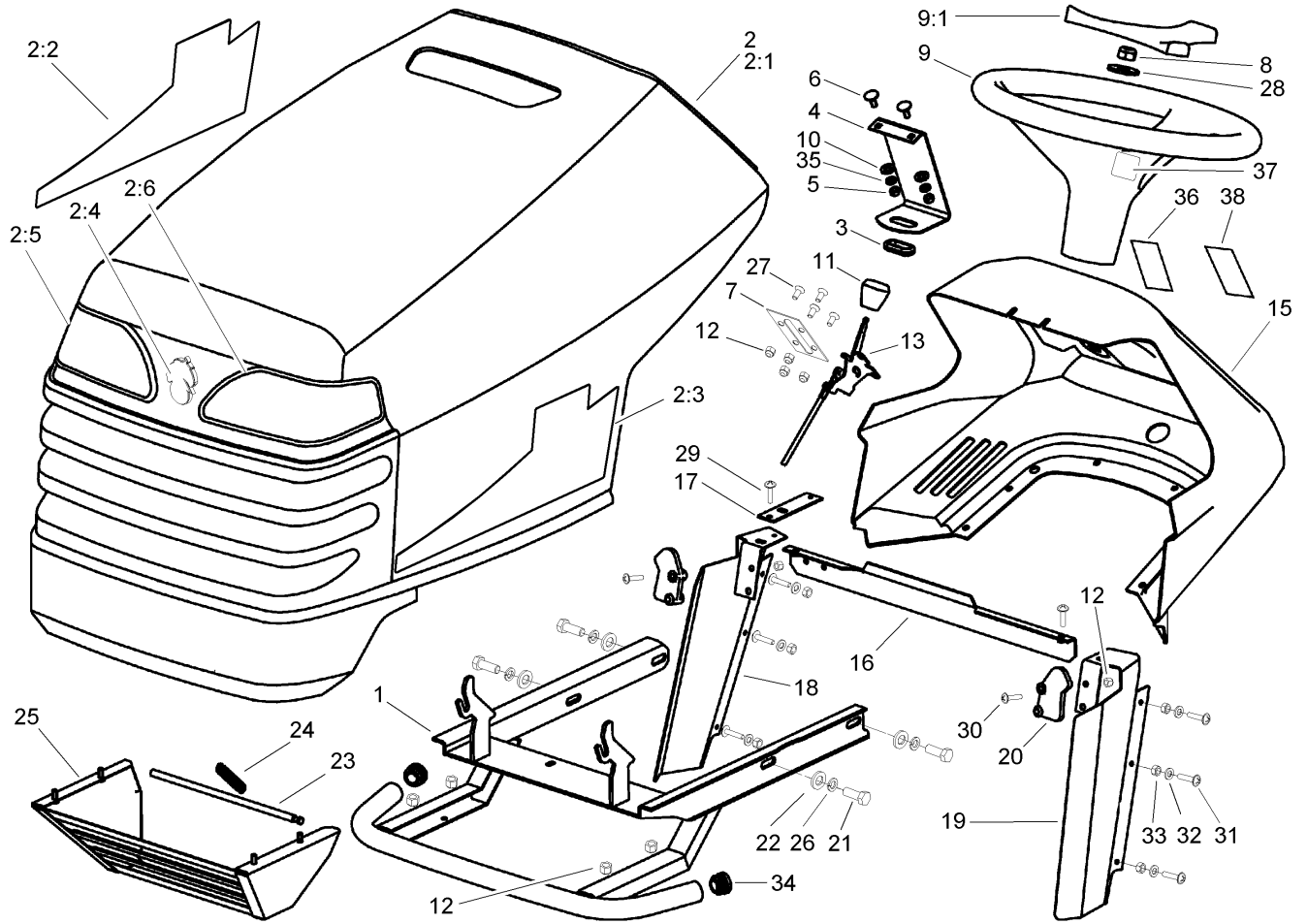
Ref	Part No.	Qty.	Description
1	33116-090	1	Screw-HH
2	33115-080	2	Screw-HH
3	107-8949	2	Spacer
4	104-2904	3	Fitting-Grease
5	104-2905	4	Washer-Flat
6	104-2891	2	Clip-Spring
7	104-2852	1	Axle-Front
8	104-2906	2	Washer-Flat
9	33025-00	4	Nut-Lock
10	104-2890	2	Bushing-Axle, Front
11	104-2907	1	Nut-Self Locking
12	104-2855	1	Rod-Tie, Front Axle
13	104-2856	1	Key-Woodruff
14	33023-00	1	Nut-Lock
15	104-2857	2	Cap-Hub
16	104-2891	2	Clip-Spring
17	107-8998	2	Retainer-Cap, Hub
18	107-8925	1	LH Spindle ASM
19	33113-045	1	Screw-HH
20	104-2862	1	Lever-Spindle, Steering
21	33025-00	4	Nut-Lock
22	107-8926	1	RH Spindle ASM
23	106-5757	4	Washer
24	107-2223	2	Wheel And Tire ASM

Ref	Part No.	Qty.	Description
24:1	107-8927	1	Wheel ASM
● 24:1:1		1	Rim
24:1:2	106-8596	1	Valve-Tire
24:1:3	110513	2	Bearing-Wheel
24:2	99-2988	1	Tire
25	104-2876	2	Joint-Ball, Angle
99	232-39	1	Tube-Inner



Steering Assembly

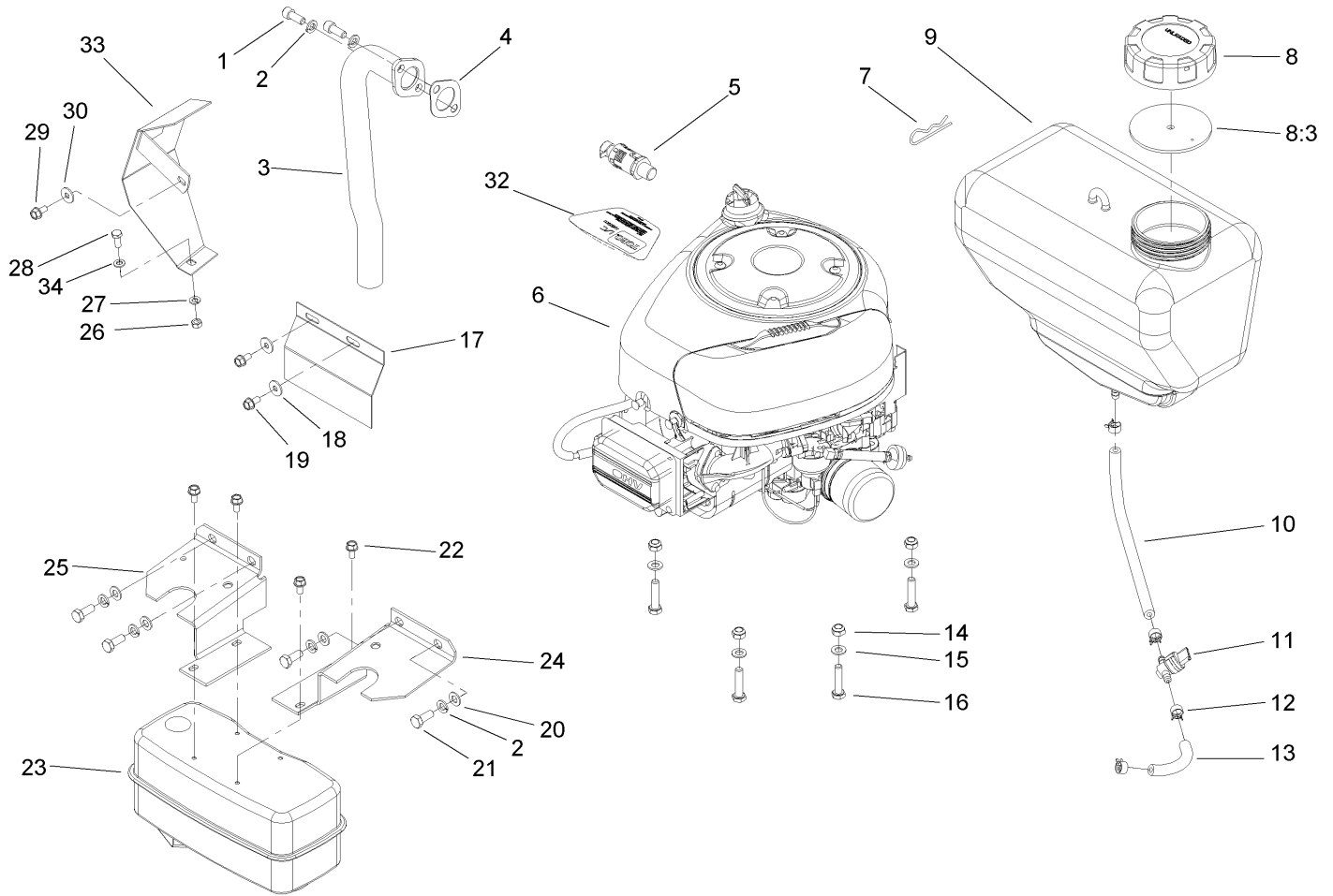
Ref	Part No.	Qty.	Description
1	33025-00	4	Nut-Lock
2	104-2876	2	Joint-Ball, Angle
3	106-5757	4	Washer
4	33024-00	4	Nut-Lock
5	33094-00	6	Washer-Plain
6	33114-020	2	Screw-HH
7	104-2891	1	Clip-Spring
8	104-2877	1	Spacer-Upper
9	104-2878	2	Bearing-Spherical
10	104-2879	1	Spacer-Lower
11	106-5773	1	Shaft-Steering
12	33026-00	1	Nut-Lock
13	33025-00	1	Nut-Lock
14	105-1238	1	Plate-Steering
15	104-2883	1	Gear-Sector
16	104-2910	1	Screw-Hex
17	104-2886	1	Link-Drag
18	105-1239	1	Bolt-Shoulder
19	105-1240	1	Pivot-Steering
20	105-1241	1	Bushing
21	33114-016	2	Screw-HH
22	104-2865	2	Stirrups-Locking
23	108-8892	1	Washer



Body and Hood Assembly

Ref	Part No.	Qty.	Description
1	107-2216	1	Support-Bumper
2	107-8986	1	Hood-Assembly
2:1		1	Hood
2:2	107-8913	1	Decal-Hood, RH
2:3	107-8902	1	Decal-Hood, LH
2:4	95-4248	1	Decal
2:5	107-8983	1	Lens-Headlamp, RH
2:6	107-8984	1	Lens-Headlamp, LH
3	104-2959	1	Bushing
4	104-2960	1	Holder-Tank, Fuel
5	33023-00	2	Nut-Lock
6	104-2961	2	Screw
7	104-2962	1	Brace
8	33026-00	1	Nut-Lock
9	98-1471	1	Wheel-Steering
9:1	98-1468	1	Cover-Wheel, Steering
10	33094-00	2	Washer-Plain
11	66-0120	1	Knob
12	87-5140	14	Nut-Lock
13	106-4166	1	Cable-Throttle And Choke
15	104-2968	1	Panel-Dash
16	104-2970	1	Brace
17	104-2971	1	Bracket
18	104-2972	1	Panel-Right

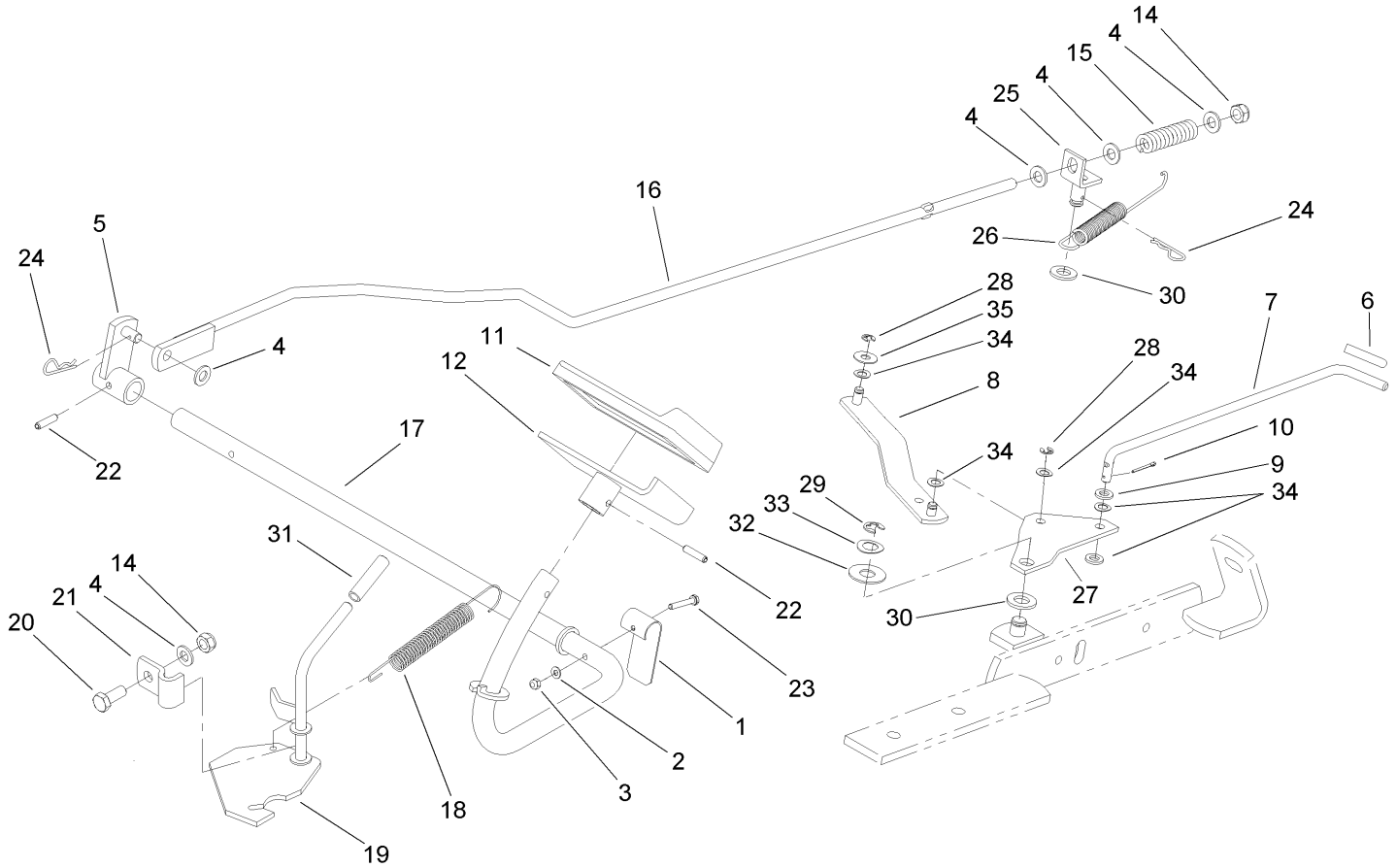
Ref	Part No.	Qty.	Description
19	104-2973	1	Panel-Left
20	92-6960	2	Latch-Hood
21	33114-020	4	Screw-HH
22	104-2946	4	Washer-Plain
23	104-2974	1	Bar-Safety
24	104-2975	1	Spring-Hood
25	107-2218	1	Guard-Muffler
26	42-9850	4	Washer-Lock, Spring
27	106-5759	4	Screw
28	106-5758	1	Washer
29	104-2980	2	Screw
30	104-2981	4	Screw
31	107-8918	6	Screw
32	104-3175	6	Washer
33	104-2985	6	Nut-Hex
34	107-8943	2	End Cap-Tube
35	43-5930	2	Washer-Spring
36	107-8920	1	Decal-Dash Throttle And Ignition
37	98-1459	1	Decal
38	104-3235	1	Decal-PTO



Engine, Muffler and Fuel Tank Assembly

Ref	Part No.	Qty.	Description
1	322-3	2	Screw-HH
2	42-9850	6	Washer-Lock, Spring
3	104-3221	1	Tube-Exhaust
4	88-4410	1	Gasket-Muffler
5	104-3208	1	Valve-Oil Drain
6		1	Engine-Briggs And Stratton, 282H79-23502
7	104-3144	1	Pin-Hair
8	88-3980	1	Gas Cap ASM
8:3	88-4010	1	Gasket-Cap, Gas
9	104-3057	1	Tank-Fuel
10	104-3211	1	Line-Fuel
11	104-3224	1	Valve-Tank, Fuel
12	104-3212	4	Clamp-Line, Fuel
13	104-3213	1	Line-Fuel
14	33024-00	4	Nut-Lock
15	33094-00	4	Washer-Plain
16	33114-035	4	Screw-HH
17	104-3222	1	Cover-Front
18	104-2931	2	Washer-Flat
19	106-5763	2	Screw
20	33094-00	4	Washer-Plain
21	33114-020	4	Screw-HH
22	106-5763	4	Screw

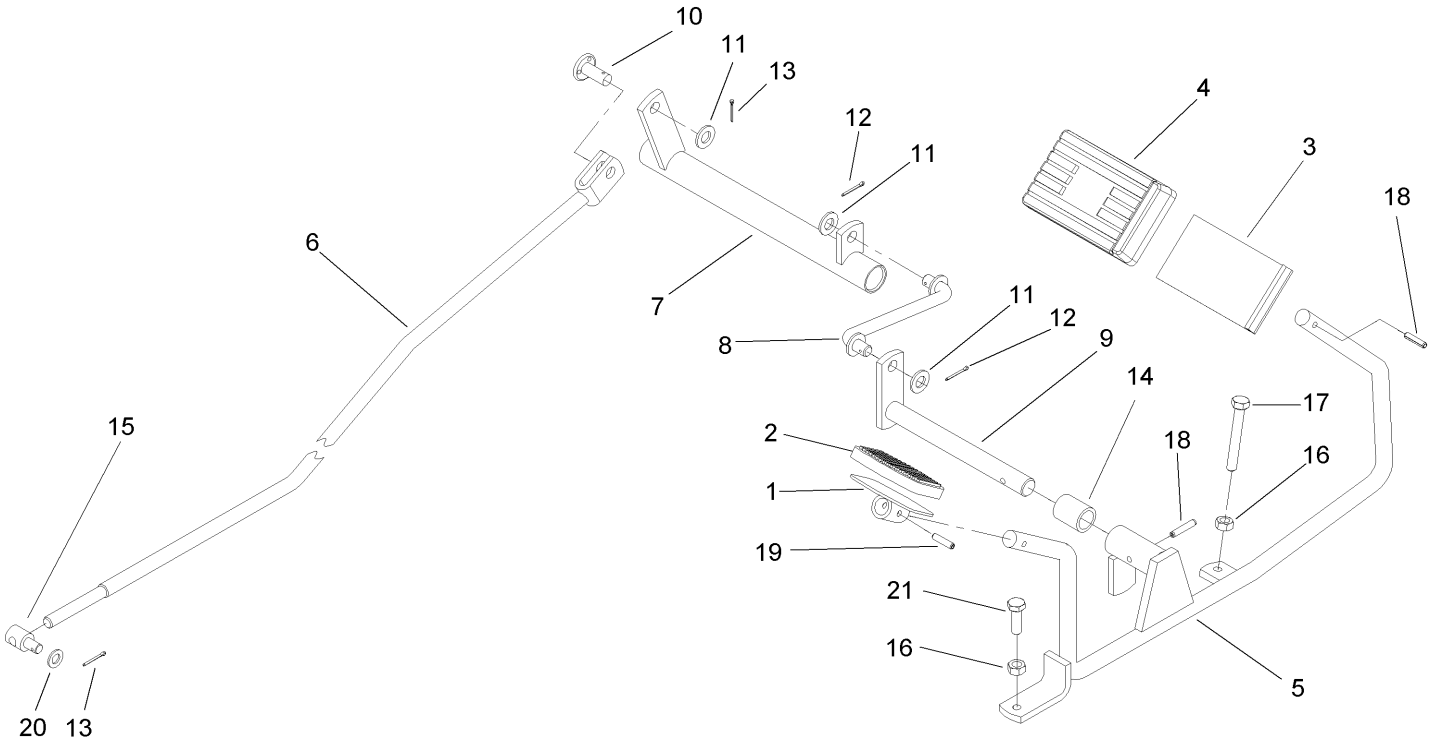
Ref	Part No.	Qty.	Description
23	104-3229	1	Muffler
24	104-3214	1	Guard-Muffler, LH
25	104-3215	1	Guard-Muffler, RH
26	33013-00	1	Nut-Hex
27	104-3186	1	Washer-Spring
28	33113-016	1	Screw-HH
29	106-5763	1	Screw
30	104-2931	1	Washer-Flat
32	107-4924	1	Decal
33	105-1242	1	Cover-Manifold, Exhaust
34	33093-00	1	Washer-Flat



Operation, Brake and Bypass Assembly

Ref	Part No.	Qty.	Description
1	104-2992	1	Lever-Spring
2	104-2984	1	Washer
3	104-2985	1	Nut-Hex
4	33094-00	5	Washer-Plain
5	104-2993	1	Bracket-Rod, Brake
6	108-8708	1	Cap-Bypass Lever, Hydro
7	104-2995	1	Rod-Lever, Bypass
8	107-8944	1	Lever-Bypass
9	104-3193	2	Washer
10	104-2997	1	Pin-Cotter
11	104-2998	1	Pad-Pedal
12	104-2999	1	Pedal
14	33024-00	2	Nut-Lock
15	104-3002	1	Spring-Brake
16	104-3003	1	Rod-Connecting, Brake
17	104-3004	1	Shaft-Brake
18	104-3005	1	Spring-Brake, Hand
19	104-3006	1	Lever-Brake, Hand
20	33114-020	1	Screw-HH
21	104-3007	1	Clamp-Lever, Parking Brake
22	104-3008	2	Pin-Spring
23	104-3009	1	Screw-Hex
24	104-3016	2	Pin-Cotter
25	104-3011	1	Bracket-Rod, Brake

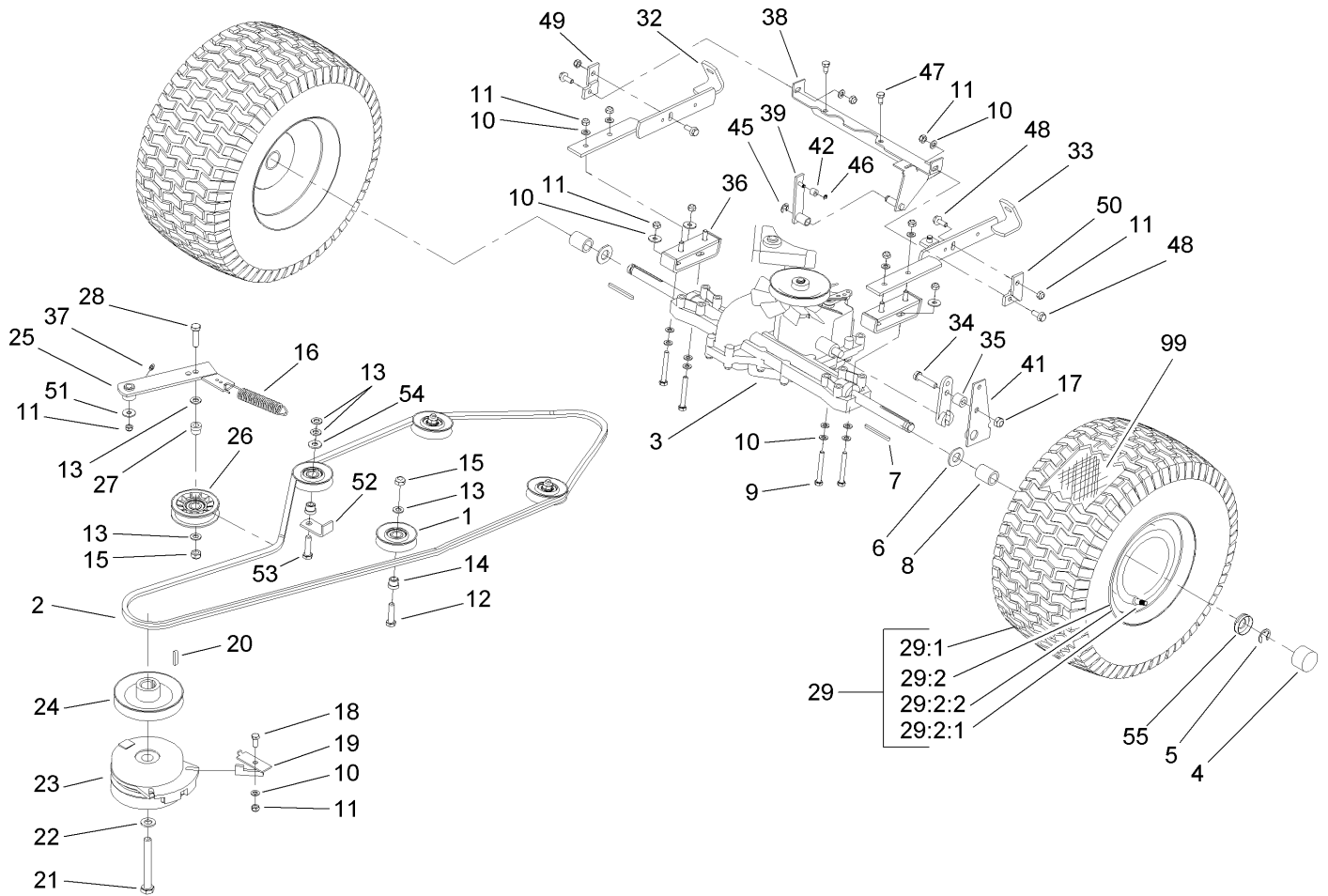
Ref	Part No.	Qty.	Description
26	104-3012	1	Spring
27	104-3323	1	Plate-Bypass
28	104-3014	2	Stirrup
29	104-3015	1	Stirrup
30	33095-00	2	Washer-Flat
31	104-3247	1	Cap
32	106-5768	1	Washer
33	106-5769	1	Washer
34	106-5770	4	Washer
35	106-5771	1	Washer



Operation and Travel Pedal Assembly

Ref	Part No.	Qty.	Description
1	104-3017	1	Pedal-Rear, Travel
2	104-3018	1	Pad-Pedal
3	104-3019	1	Pedal-Travel, Front
4	104-3020	1	Pad-Pedal, Front
5	104-3021	1	Pad-Travel
6	104-3022	1	Rod-Tie
7	104-3023	1	Shaft-Diagonal
8	104-3024	1	Link-Formed
9	104-3025	1	Shaft-Diagonal
10	104-3026	1	Pin
11	33095-00	3	Washer-Flat
12	104-3016	2	Pin-Cotter
13	104-3027	2	Pin-Cotter
14	104-3028	1	Spacer
15	104-3029	1	Pin
16	33014-00	2	Nut-Hex
17	33114-060	1	Screw-HH
18	104-3008	2	Pin-Spring
19	104-3030	1	Pin-Spring
20	104-3031	1	Washer
21	33114-025	1	Screw-HH

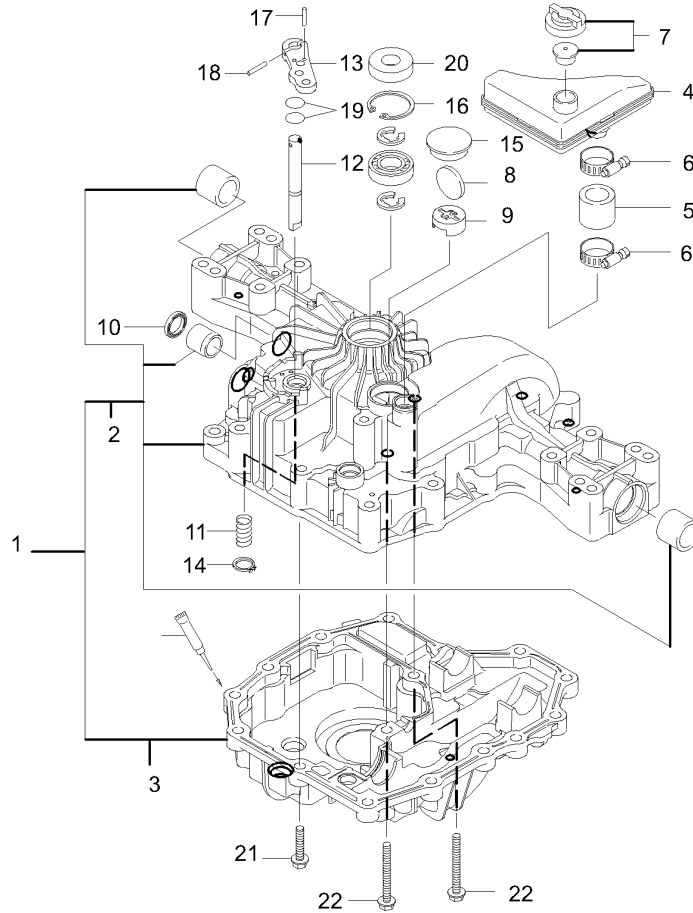
--	--	--	--



Transmission Drive Assembly

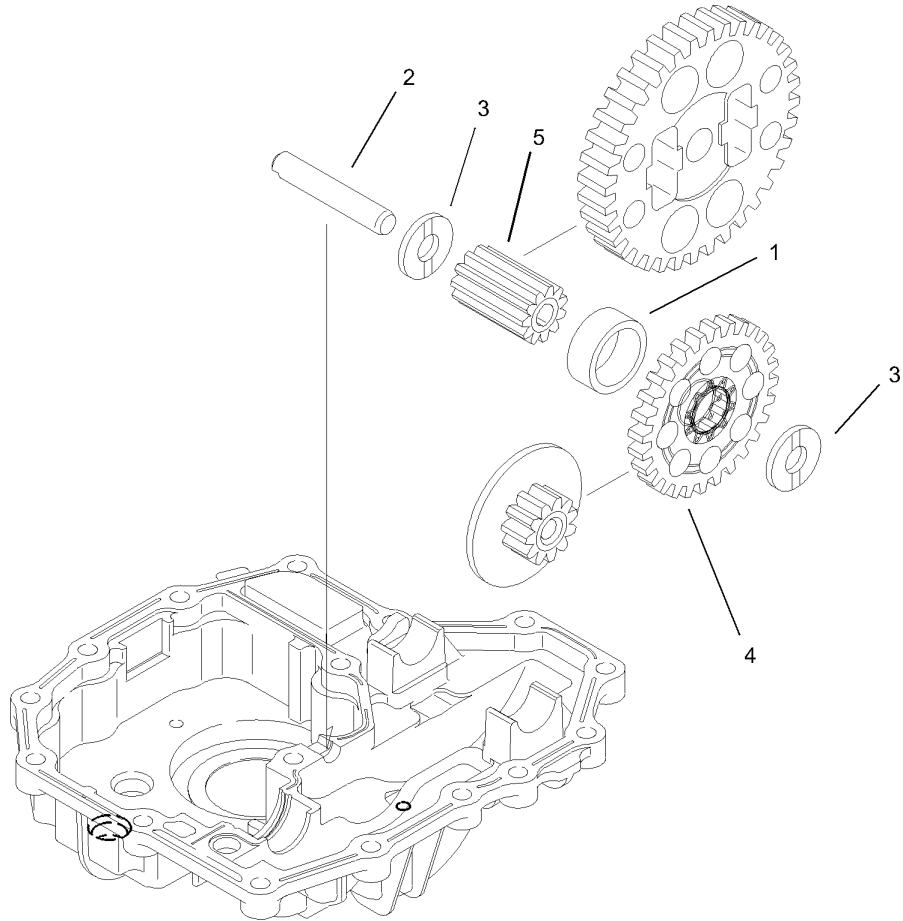
Ref	Part No.	Qty.	Description
1	104-2887	4	Pully-Idler
2	104-2888	1	V-Belt-Traction
3	104-2889	1	Transmission
4	104-2857	2	Cap-Hub
5	104-2891	2	Clip-Spring
6	104-3206	2	Washer
7	104-2892	2	Key-Square
8	104-2895	2	Spacer-Axle
9	33114-080	4	Screw-HH
10	33094-00	16	Washer-Plain
11	33024-00	14	Nut-Lock
12	33115-040	3	Screw-HH
13	33095-00	7	Washer-Flat
14	104-2896	4	Bushing-Idler
15	33025-00	5	Nut-Lock
16	104-2897	1	Spring
17	33025-00	1	Nut-Lock
18	33114-020	1	Screw-HH
19	104-2898	1	Retainer
20	104-2899	1	Key-Square
21	3212-10	1	Screw-HH
22	93-9043	1	Washer-Spring, Belleville
23	104-3334	1	Clutch-Electric
24	104-2911	1	Pulley-Engine

Ref	Part No.	Qty.	Description
25	104-2912	1	Arm-Idler
26	104-2913	1	Pulley-Idler
27	104-2896	1	Bushing-Idler
28	33115-040	1	Screw-HH
29	107-2224	2	Wheel And Tire ASM
29:1	99-2996	1	Tire
29:2	107-8928	1	Wheel ASM
● 29:2:1		1	Rim (18X9.5X8)
29:2:2	106-8596	1	Valve-Tire
32	106-8594	1	Bracket-Right
33	106-8593	1	Bracket-Left
34	33115-045	1	Screw-HH
35	104-2925	1	Sleeve
36	107-8947	2	Bracket-Support
37	104-2904	1	Fitting-Grease
38	104-3327	1	Bar ASM
39	104-3328	1	Arm-Switch
41	104-3326	1	Tenon
42	104-3329	1	Roller
45	104-3341	1	Stirrup
46	104-3014	1	Stirrup
47	104-3344	2	Screw-Thread Forming
48	104-3065	4	Screw-Hex
49	107-8945	1	Bracket-Right



Transaxle Case Assembly Transmission Assembly No. 104-2889

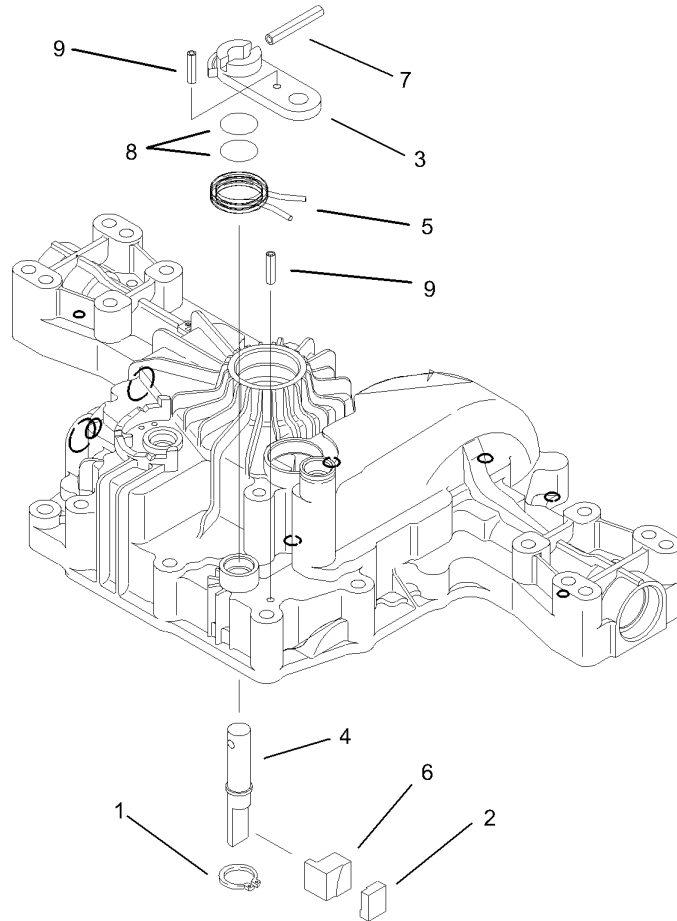
Ref	Part No.	Qty.	Description				
1	104-3251	1	Transaxle Case Set				
2	104-3252	1	Housing-Upper				
3	104-3253	1	Housing-Lower				
4	104-2914	1	Tank-Reservoir, With Cap				
5	104-3254	1	Tube				
6	104-3255	2	Clamp-Miniature				
7	104-3256	1	Valve-Vent, 15				
8	104-3257	1	Magnet				
9	104-3258	1	Holder-Magnet				
10	104-3259	1	Seal-Oil				
11	93-0396	1	Spring				
12	104-3260	1	Shaft-Bypass				
13	104-3261	1	Lever-Bypass				
14	104-3262	1	Ring				
15	104-3263	1	Plug-Bore				
16	93-0360	1	Ring				
17	104-3264	1	Pin				
18	104-3265	1	Pin				
19	93-0419	2	Packing				
20	93-0361	1	Seal				
21	93-0363	14	Screw-TAP				
22	104-3266	2	Screw-TAP				



Final Pinion Assembly Transmission Assembly No. 104-2889

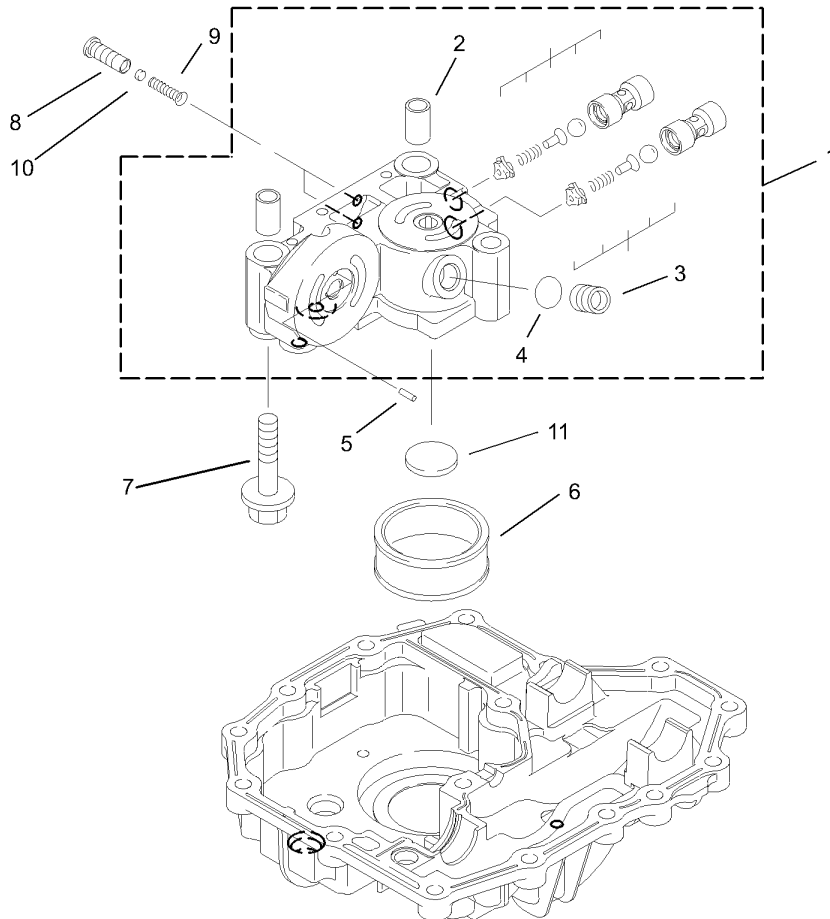
Ref	Part No.	Qty.	Description
1	104-3302	1	Collar-Final Pinion
2	104-3303	1	Shaft-Reduction
3	104-3304	2	Washer
4	104-3305	1	Gear-Reduction
5	104-3306	1	Pinion-Final

--	--	--	--



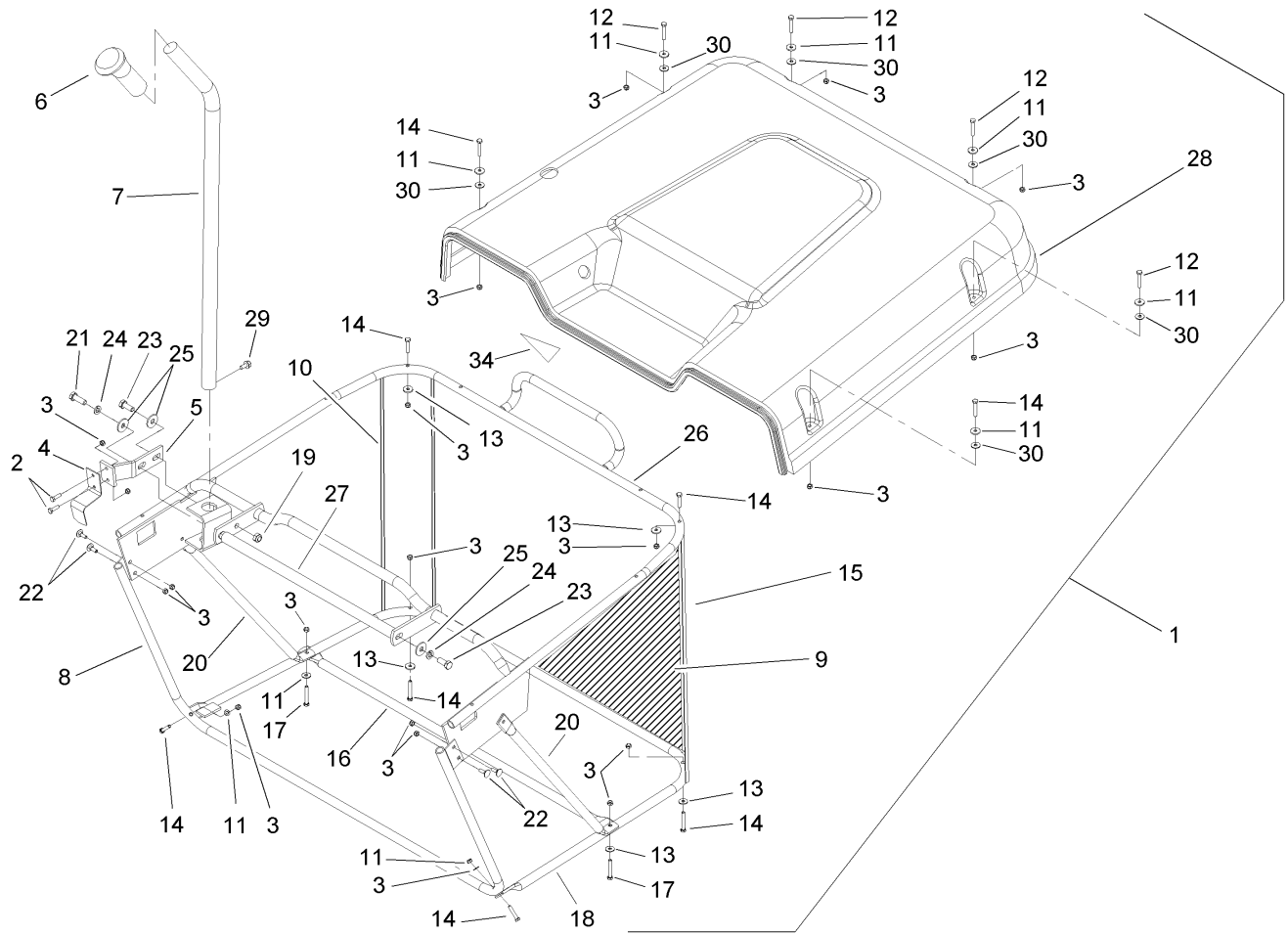
Brake Assembly Transmission Assembly No. 104-2889

Ref	Part No.	Qty.	Description				
1	104-3313	1	Ring				
2	104-3314	1	Shoe-Brake				
3	104-3315	1	Arm-Brake				
4	104-3316	1	Shaft-Brake				
5	104-3317	1	Spring-Return, Brake				
6	104-3318	1	Actuator-Brake				
7	92-0767	1	Pin				
8	92-0786	2	O-Ring				
9	104-3319	2	Pin				



Center Case Assembly Transmission Assembly No. 104-2889

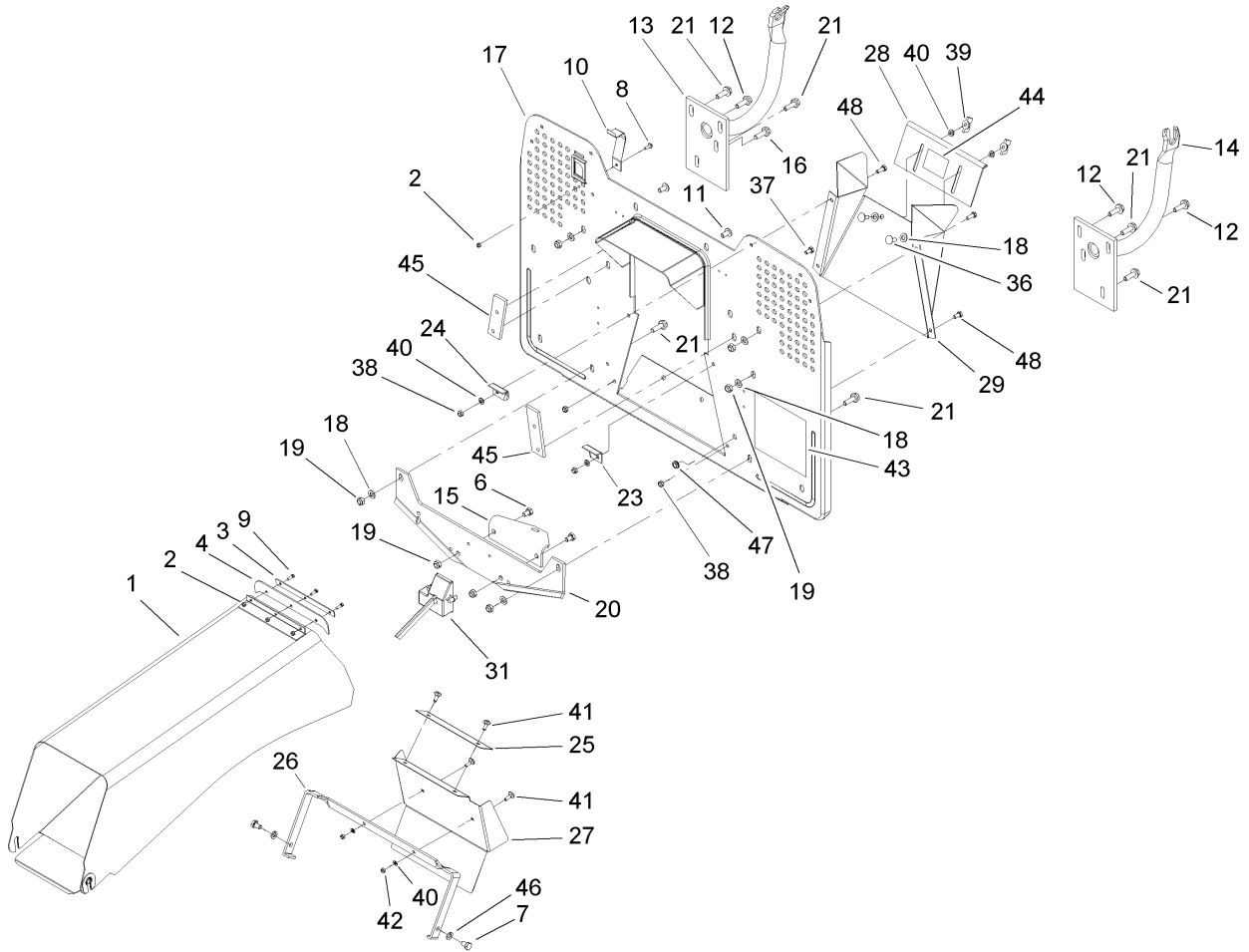
Ref	Part No.	Qty.	Description				
1	104-3267	1	Case-Center				
2	104-3268	2	Pin-Knock				
3	104-3269	1	Plug				
4	93-0419	1	Packing				
5	104-3270	1	Pin				
6	104-3271	1	Filter				
7	104-3272	3	Bolt				
8	104-3273	2	Valve				
9	104-3274	2	Spring				
10	104-3275	2	Filter				
11	104-3257	1	Magnet				



Grass Collector Assembly No. 106-5760

Ref	Part No.	Qty.	Description
1	106-5760	1	Collector ASM
2	60-6910	2	Screw
3	87-5140	22	Nut-Lock
4	104-3033	1	Spring-Coll, Interlock Switch
5	106-5761	1	Bracket-Spring
6	104-3035	1	Grip-Handle
7	107-8917	1	Lever-Dump
8	104-3037	1	Front Frame ASM
9	104-3038	1	Bag-Grass
10	104-3039	1	Support-Corner, Right
11	104-2943	8	Washer-Flat
12	87-5150	4	Bolt
13	52-6430	14	Washer
14	104-3041	10	Screw-Hex
15	104-3042	1	Support-Corner, Left
16	104-3043	1	Brace-Connecting
17	104-3044	2	Screw-Hex
18	104-3045	1	Bottom Frame ASM
19	33024-00	1	Nut-Lock
20	104-3046	2	Brace
21	33114-025	1	Screw-HH
22	104-2948	4	Bolt-Carriage
23	33114-020	2	Screw-HH
24	42-9850	2	Washer-Lock, Spring

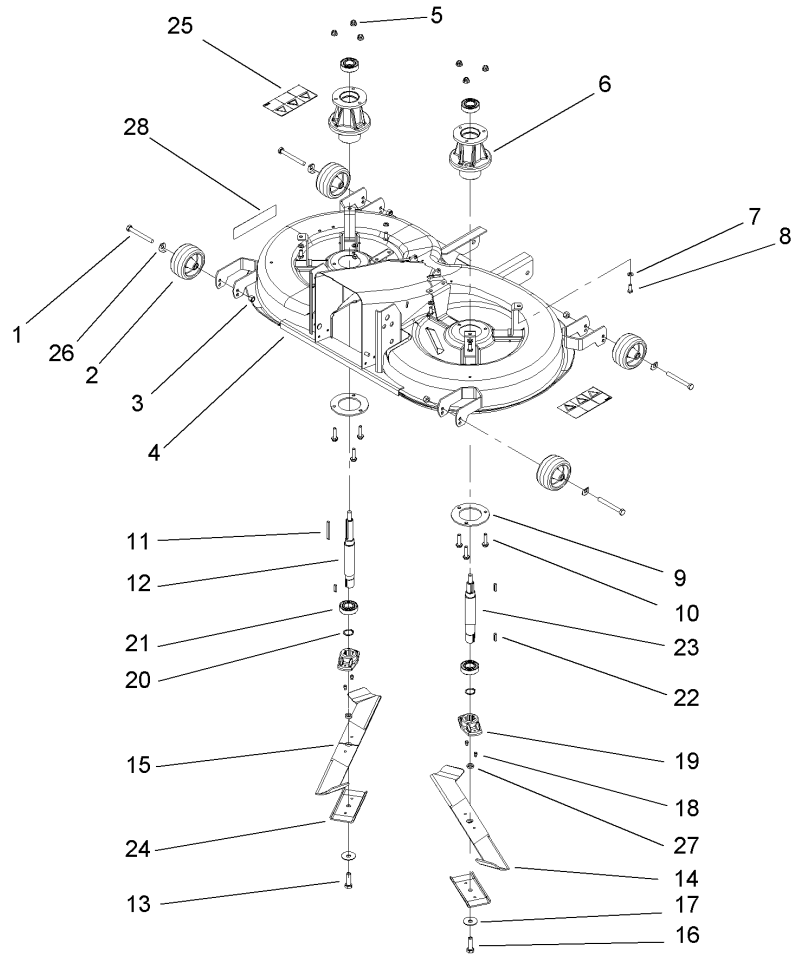
Ref	Part No.	Qty.	Description
25	104-2946	4	Washer-Plain
26	104-3047	1	Top Frame ASM
27	104-3048	1	Handle-Lift
28	106-5762	1	Cover-Collector
29	106-5763	1	Screw
30	104-2952	6	Washer-Rubber
34	104-3242	1	Decal-Bag To Frame



Collector Assembly

Ref	Part No.	Qty.	Description
1	106-8562	1	Tunnel
2	104-2985	4	Nut-Hex
3	104-3055	1	Plate-Support
4	104-3056	1	Seal-Rubber
6	33114-020	2	Screw-HH
7	68-9410	2	Screw-Flange
8	104-2983	1	Screw
9	104-3058	3	Screw-SFH
10	104-3059	1	Cover-Switch
11	104-3060	2	Bolt-Carriage
12	104-3061	4	Screw
13	104-3062	1	Support-Collector, Right
14	104-3063	1	Support-Collector, Left
15	104-3064	1	Hitch-Tow
16	104-3065	1	Screw-Hex
17	104-3066	1	Collector Plate ASM
18	33095-00	9	Washer-Flat
19	33024-00	9	Nut-Lock
20	104-3067	1	Support-Hitch, Tow
21	104-3068	6	Screw-Hex
23	106-8597	1	Support-Tunnel, Left
24	106-8598	1	Support-Tunnel, Right
25	106-8599	1	Shield-Rubber
26	104-3069	1	Bracket-Shield, Protective

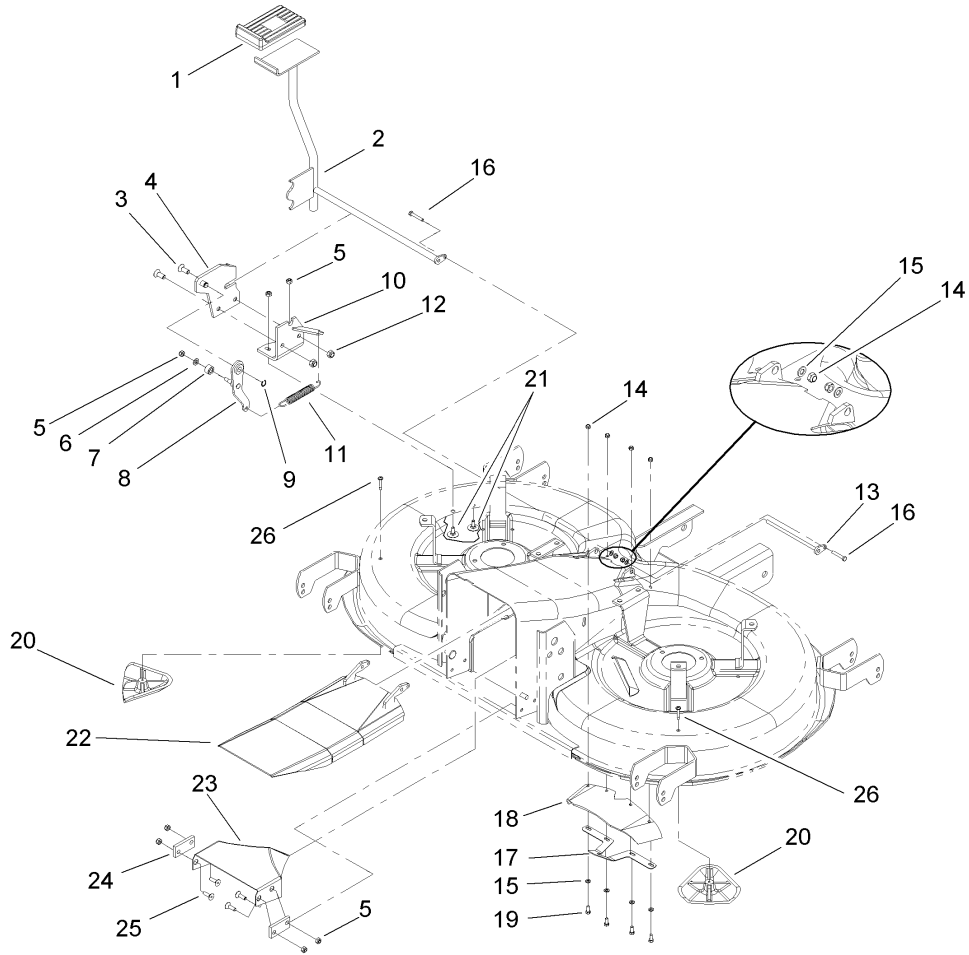
Ref	Part No.	Qty.	Description
27	104-3070	1	Shield-Protective
28	104-3336	1	Shield-Adjustable
29	104-3335	1	Hopper-Receiving
31	104-3074	1	Overload Switch ASM
36	104-2961	2	Screw
37	33113-012	2	Screw-HH
38	33023-00	4	Nut-Lock
39	32103-28	2	Nut-Wing
40	33093-00	4	Washer-Flat
41	104-2948	4	Bolt-Carriage
42	87-5140	4	Nut-Lock
43	104-3243	1	Decal-Bypass, Hydro
44	104-2853	1	Decal-Position, Bagging
45	104-3347	2	Plate-Reinforcing
46	104-3348	2	Washer-Spring
47	106-5772	1	Bushing
48	106-8575	2	Screw-HH



Cutting Pan, Mower Housing Assembly

Ref	Part No.	Qty.	Description
1	33115-090	4	Screw-HH
2	104-3080	4	Wheel-Gauge
3	33025-00	4	Nut-Lock
4	107-8991	1	Housing-Mower
5	104-3082	6	Nut-Lock, HF
6	107-8992	2	Housing-Spindle
7	33094-00	8	Washer-Plain
8	33114-020	8	Screw-HH
9	104-3084	2	Support-Ring
10	104-3085	6	Bolt-HHF
11	104-3086	1	Key
12	106-8565	1	Shaft-Blade, Left
13	106-5797	1	Bolt-HH, Blade
14	106-8557	1	Blade-RH
15	106-8558	1	Blade-LH
16	106-5798	1	Bolt-Blade, HH
17	106-6532	2	Washer-Blade
18	104-3093	4	Pin-Shear, Grooved
19	106-4185	2	Adapter-Blade
20	104-3095	2	Ring-Locking
21	104-6325	4	Bearing-Ball
22	104-3097	3	Key-Square
23	106-8566	1	Shaft-Blade, Right
24	106-6533	2	Stiffener-Blade

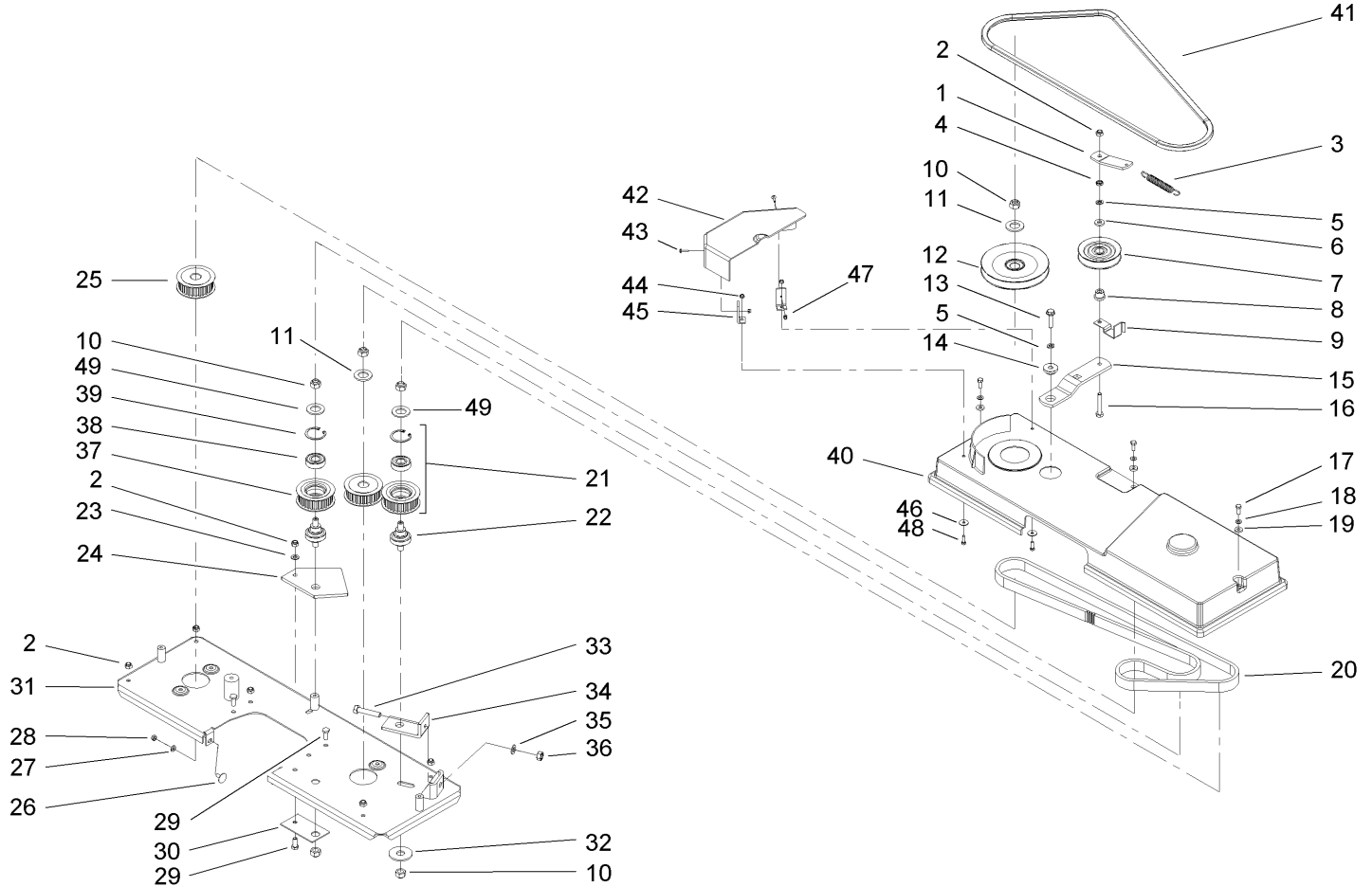
Ref	Part No.	Qty.	Description
25	93-7824	2	Decal-Danger
26	106-5767	4	Washer
27	106-6530	2	Spacer
28	106-8563	1	Decal-Recycler



Cutting Pan and Bag on Demand Assembly

Ref	Part No.	Qty.	Description
1	106-8583	1	Cover-Lever, Foot
2	106-8582	1	Lever-Foot
3	100-8159	2	Screw-HSFH
4	106-8578	1	Plate-Stop
5	33023-00	7	Nut-Lock
6	33093-00	1	Washer-Flat
7	106-8581	1	Roller
8	106-8579	1	Lever-Spring
9	106-8592	1	Ring-Locking
10	106-8577	1	Bracket-Mounting
11	106-8580	1	Spring
12	48-9510	2	Nut
13	106-8585	1	Rod-Door, Mulch
14	87-5140	6	Nut-Lock
15	52-6430	6	Washer
16	87-5150	2	Bolt
17	106-8567	2	Guide
18	106-8586	1	Gasket-Door, Mulch
19	106-8575	4	Screw-HH
20	106-8587	1	Kicker
21	33123-016	2	Screw-CARR
22	107-8968	1	Door-Mulch
23	106-8573	1	Baffle-Center
24	106-8572	2	Plate-Baffel, Center

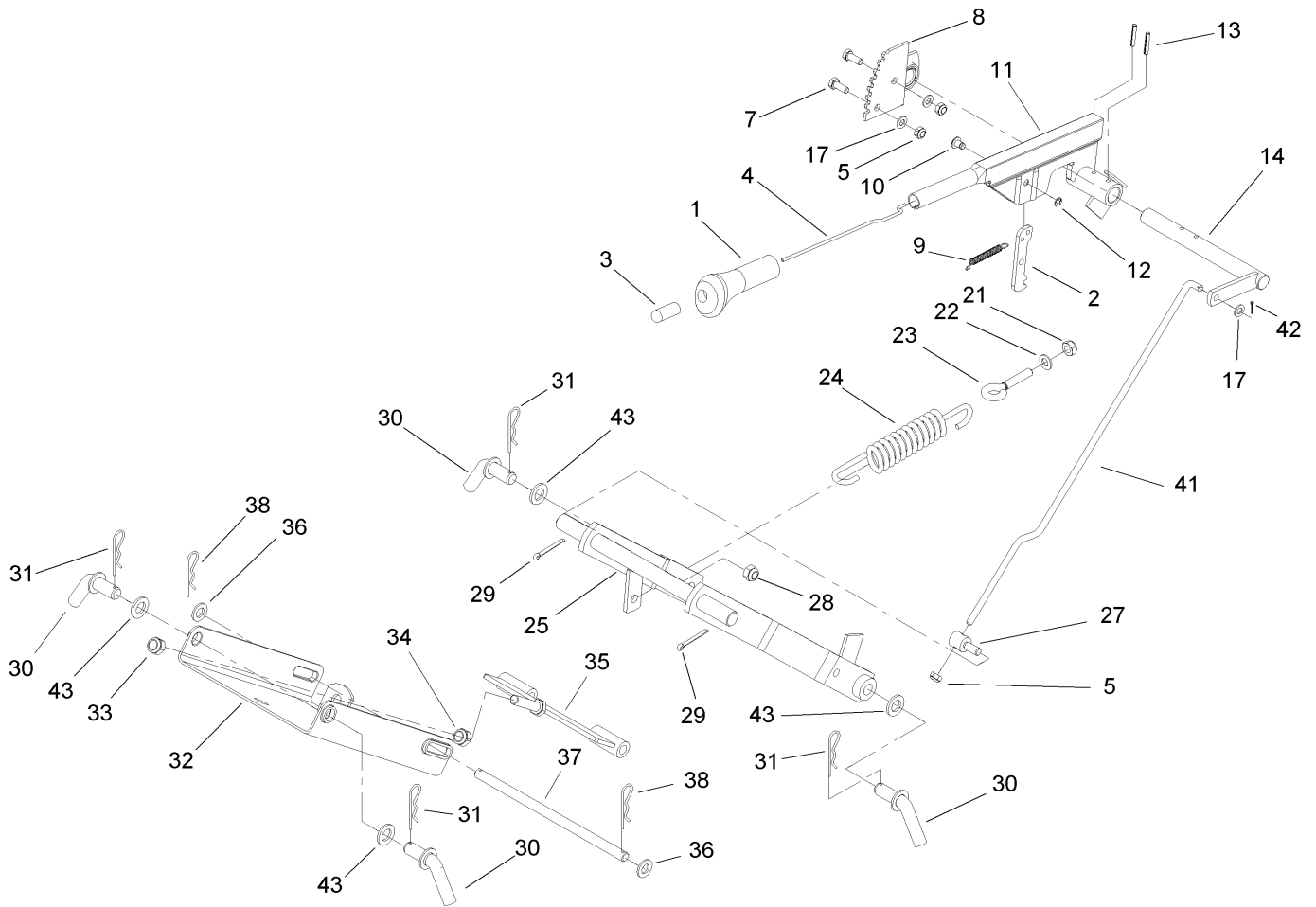
Ref	Part No.	Qty.	Description
25	106-8574	4	Screw
26	104-1451	2	Screw-TAP, PPH



Cutting Pan and Drive System Assembly

Ref	Part No.	Qty.	Description
1	104-3099	1	Lever-Engagement
2	48-9510	8	Nut
3	104-3101	1	Spring
4	57-6390	1	Nut-Jam
5	42-9850	1	Washer-Lock, Spring
6	106-8588	1	Washer-Flat
7	104-3103	1	Pulley-Idler
8	104-3104	1	Bushing
9	104-3105	1	Retainer-Belt
10	48-9540	6	Nut-Lock, Hex NI
11	33099-00	4	Washer-Flat
12	104-3107	1	Pulley-Drive
13	33105-025	1	Screw-HHF
14	107-8995	1	Shim-Arm, Idler
15	104-3109	1	Arm-Idler
16	33114-050	1	Screw-HH
17	33113-016	3	Screw-HH
18	106-8568	3	Washer-Flat
19	83-7420	3	Washer-Rubber
20	106-8591	1	Belt-Cog
21	104-3113	2	Cog Pulley ASM
22	104-3114	2	Pin-Pulley, Cog
23	33094-00	1	Washer-Plain
24	104-3115	1	Support-Pulley

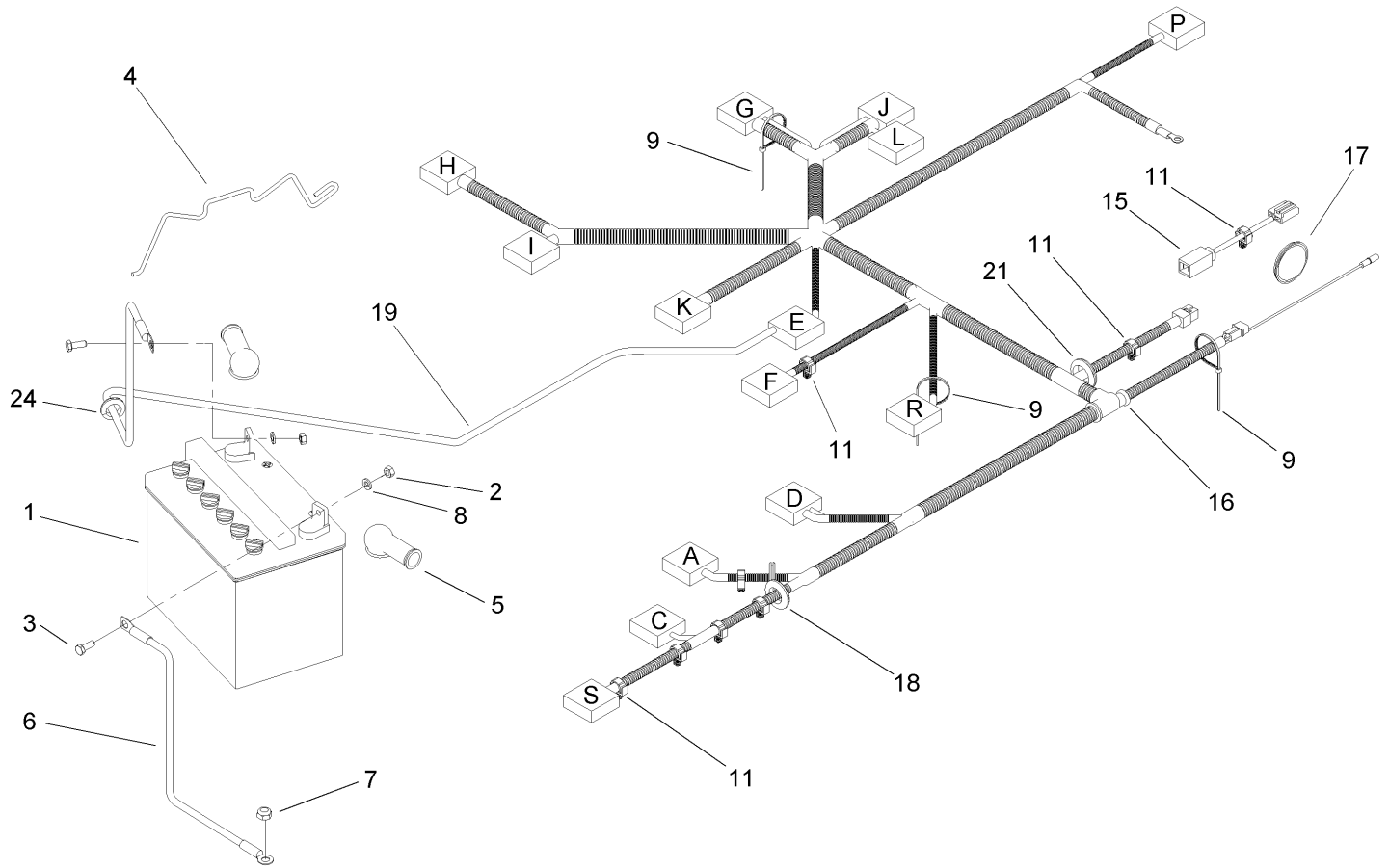
Ref	Part No.	Qty.	Description
25	104-3116	2	Pulley-Cog, Drive
26	33123-016	2	Screw-CARR
27	33093-00	2	Washer-Flat
28	33023-00	2	Nut-Lock
29	33114-025	3	Screw-HH
30	104-3117	1	Plate-Anchor
31	107-8996	1	Plate-Drive, Blade
32	104-2909	1	Washer
33	33115-050	1	Screw-HH
34	104-3120	1	Bracket-Idler
35	108-8709	2	Washer-Flat
36	48-9520	1	Nut
37	104-3121	1	Pulley-Cog
38	100-1048	1	Bearing-Ball
39	104-3123	1	Ring-Locking
40	106-8589	1	Belt-Cover
41	104-3127	1	V-Belt
42	107-8941	1	Guard-Belt
43	60-6910	2	Screw
44	87-5140	2	Nut-Lock
45	107-8940	2	Bracket
46	3256-61	4	Washer-Flat
47	46-0430	2	Nut-Lock
48	107-8918	2	Screw



Mower Lift Assembly

Ref	Part No.	Qty.	Description
1	104-3129	1	Grip-Handle
2	104-3130	1	Ratchet-Plate, Pivot
3	104-3131	1	Button-Plunger
4	104-3132	1	Rod-Connection
5	33024-00	3	Nut-Lock
7	33114-020	2	Screw-HH
8	104-3133	1	Segment-Gear
9	104-3134	1	Spring
10	104-3135	1	Pin-Arm Lever
11	104-3136	1	Lever-Arm, Height Adj.
12	104-3137	1	Clip-Pin
13	104-2994	2	Pin-Spring
14	104-3138	1	Shaft-Height Adj.
17	33094-00	3	Washer-Plain
21	33025-00	1	Nut-Lock
22	33095-00	1	Washer-Flat
23	104-3139	1	Bolt-Eye
24	104-3140	1	Spring-Lift
25	104-3141	1	Pivot Arm ASM
27	104-3142	1	Pin-Lifting
28	33025-00	1	Nut-Lock
29	104-3016	2	Pin-Cotter
30	104-3143	4	Pin-Bent
31	104-3144	4	Pin-Hair

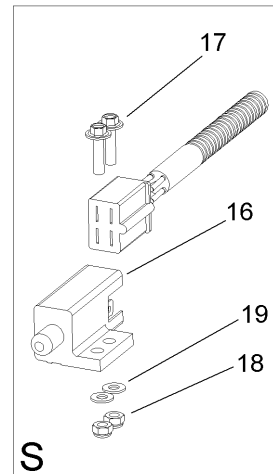
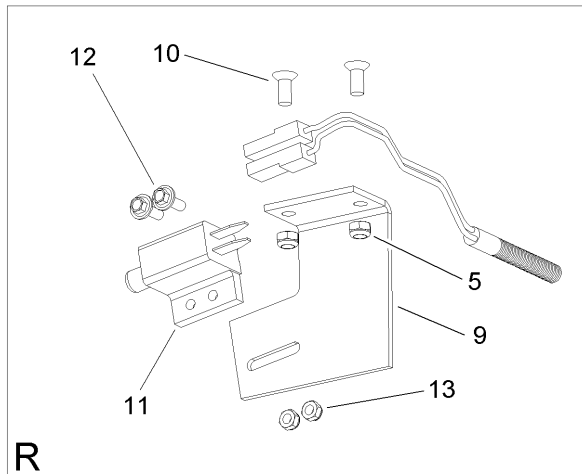
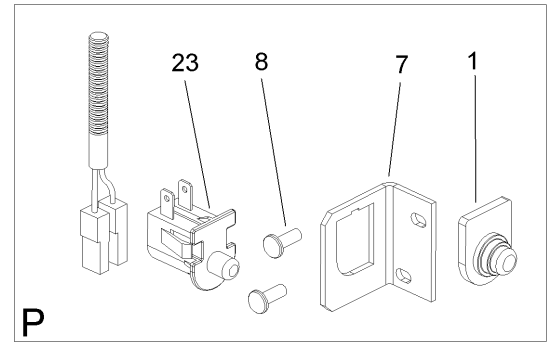
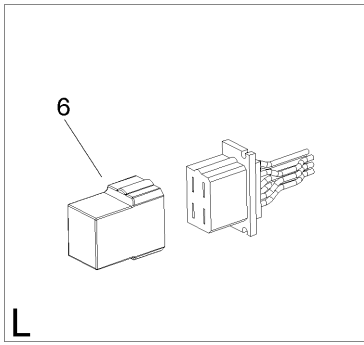
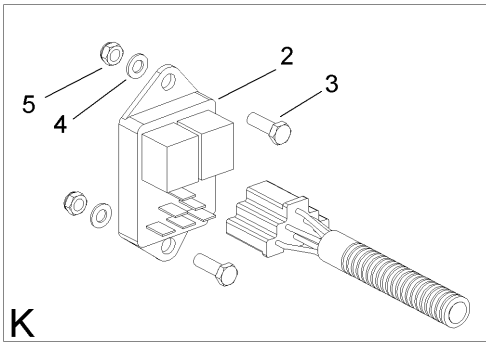
Ref	Part No.	Qty.	Description
32	104-3145	1	Suspension-Mower Deck, Front
33	33026-00	1	Nut-Lock
34	33016-00	1	Nut-Hex
35	104-3146	1	Holder-Front
36	104-3124	2	Washer-Flat
37	104-3147	1	Pin
38	104-3148	2	Clip-Hair Pin
41	104-3149	1	Rod-Height Adj.
42	104-3151	1	Pin-Cotter
43	34-9270	4	Washer-Hose



Electrical Assembly

Ref	Part No.	Qty.	Description
1	104-3152	1	Battery-12V
2	33013-00	2	Nut-Hex
3	33113-016	2	Screw-HH
4	104-3153	1	Clamp-Battery
5	104-3154	2	Boot-Rubber
6	104-3155	1	Cable-Battery, Negative
7	33024-00	1	Nut-Lock
8	33093-00	2	Washer-Flat
9	3334-945	3	Tie-Cable
11	104-3157	8	Clip-Snap
15	104-3160	1	Harness-Clutch
16	107-2222	1	Harness-Wiring
17	104-3163	1	Cap
18	104-3165	2	Bushing
19	104-3166	1	Cable-Battery Positive
21	104-3168	1	Bushing
24	107-8950	1	Grommet

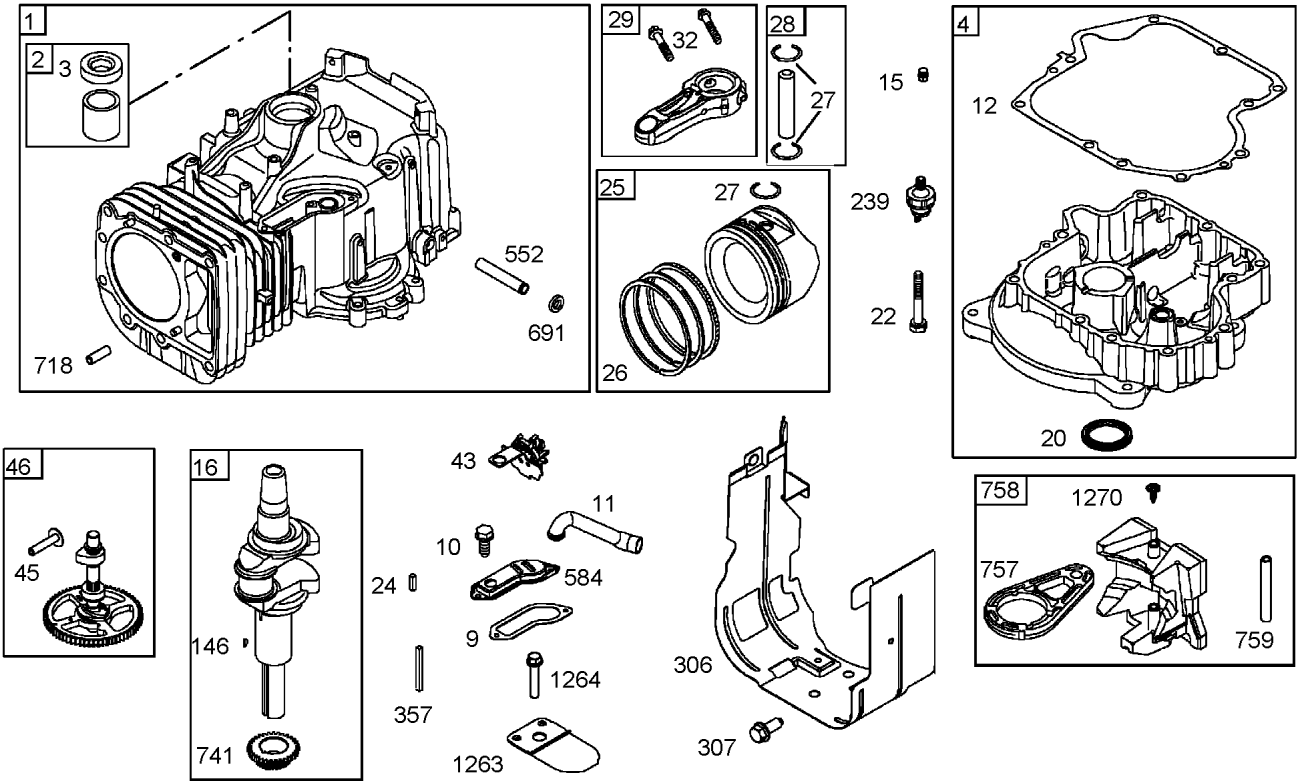
--	--	--	--



Electrical Switch No. 3 Assembly

Ref	Part No.	Qty.	Description
1	104-3178	1	Cover-Protective
2	99-3701	1	Module-Clutch
3	60-6910	2	Screw
4	52-6430	2	Washer
5	87-5140	4	Nut-Lock
6	104-3169	1	Circuit-Memory
7	107-8954	1	Holder-Switch
8	104-3190	2	Screw
9	107-8955	1	Holder-Switch
10	104-2980	2	Screw
11	95-1653	1	Switch-Pole, Single
12	104-2983	2	Screw
13	104-2985	2	Nut-Hex
16	104-3330	1	Switch-Delta
17	104-3331	2	Bolt
18	46-0430	2	Nut-Lock
19	52-6430	2	Washer
23	104-3179	1	Switch-Delta

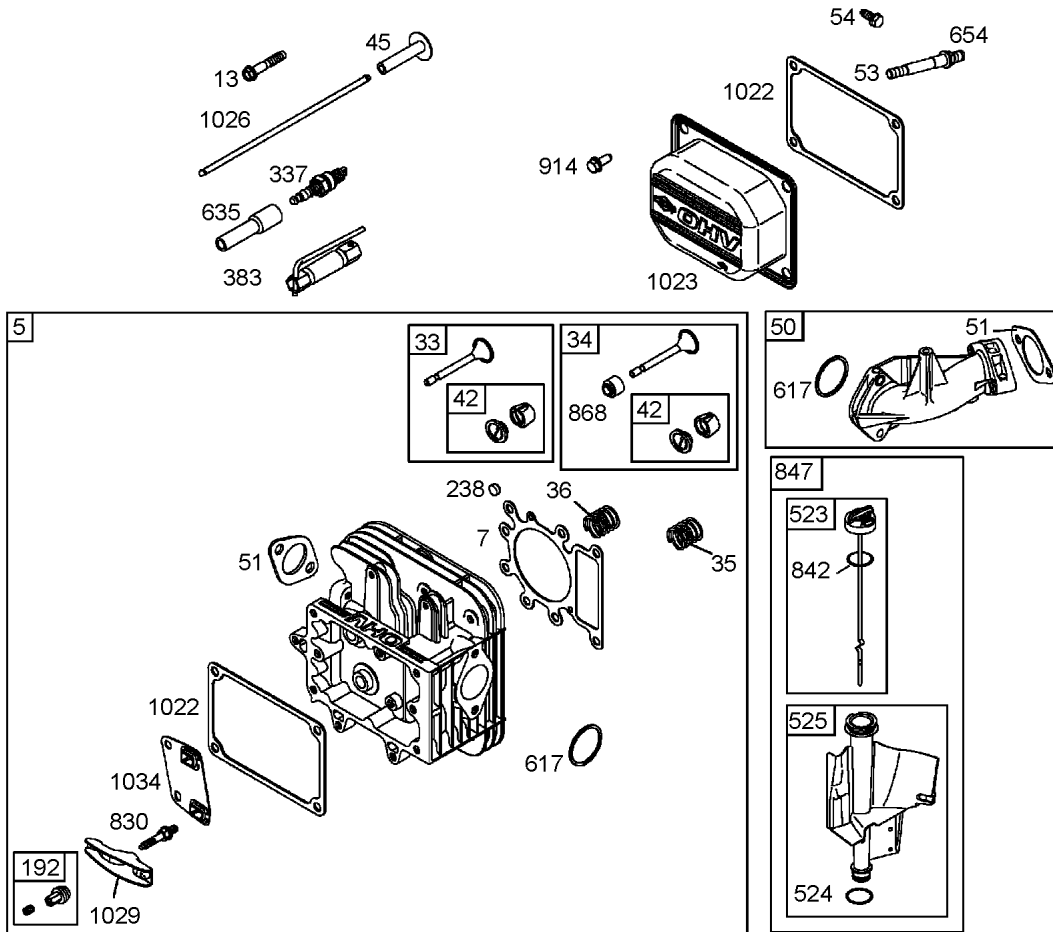
--	--	--	--



Cylinder, Crankshaft and Piston Assemblies Briggs and Stratton 282H79-23502

Ref	Part No.	Qty.	Description
1	697132	1	Cylinder ASM
2	399265	1	Bushing And Seal Kit
3	391086	1	Seal-Oil
4	697106	1	Sump-Engine
9	697109	1	Gasket-Breather
10	697157	1	Screw
11	697113	1	Tube-Breather
12	697110	1	Gasket-Crankcase
15	690946	1	Plug-Drain, Oil
16	697127	1	Crankshaft
20	690947	1	Seal-Oil
22	692125	1	Screw
24	222698	1	Key
25	698371	1	Piston ASM (Standard)
25	698393	1	Piston ASM (.010 Oversize)
25	698394	1	Piston ASM (.020 Oversize)
25	698395	1	Piston ASM (.030 Oversize)
26	698375	1	Ring Set (Standard)
26	698396	1	Ring Set (.010 Oversize)
26	698397	1	Ring Set (.020 Oversize)
26	698398	1	Ring Set (.030 Oversize)
27	698469	1	Lock-Pin, Piston
28	697099	1	Pin-Piston (STD)
29	697126	1	Rod-Connecting (Standard)

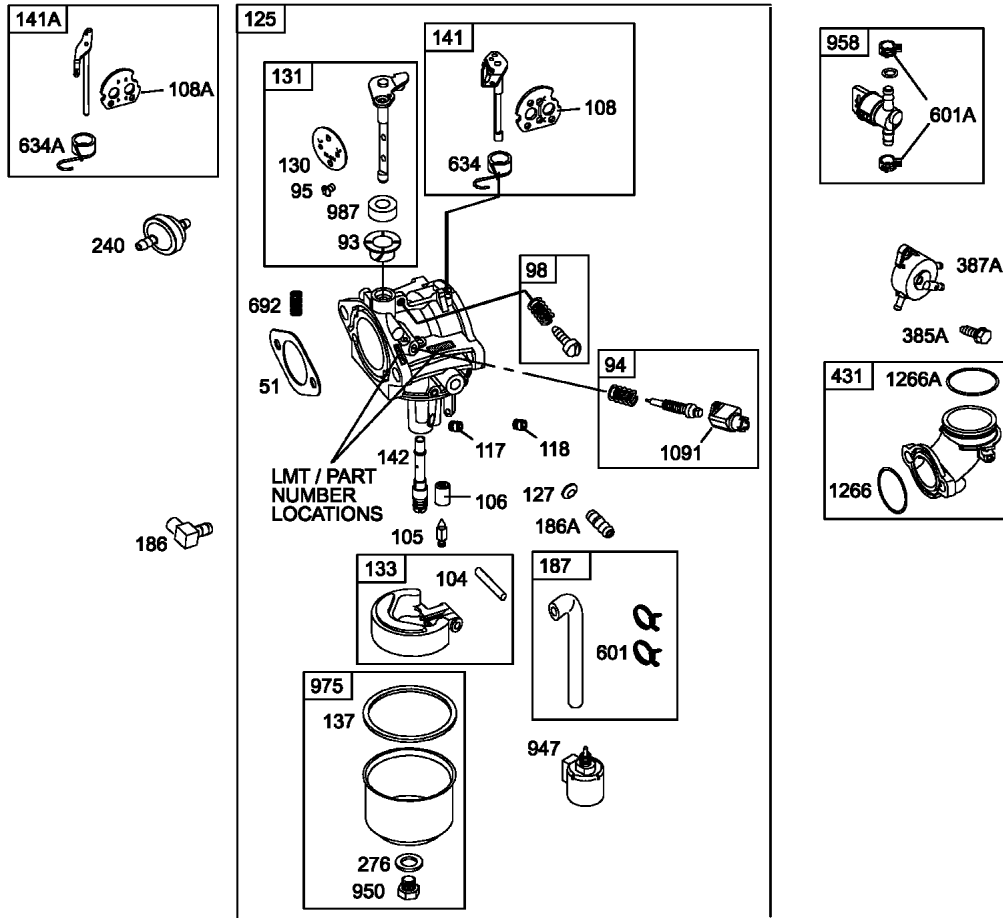
Ref	Part No.	Qty.	Description
32	692852	1	Screw
43	691968	1	Slinger-Governor, Oil
45	690564	1	Tappet-Valve
46	698492	1	Camshaft
146	691639	1	Key-Timing
239	491657	1	Switch-Oil Pressure
306	697107	1	Shield-Cylinder
307	691003	1	Screw
357	691483	1	Key-Pulley, Drive
552	697144	1	Bushing-Crank, Governor
584	697112	1	Cover-Passage, Breather
691	692407	1	Seal-Shaft, Governor
718	690959	1	Pin-Locating
741	697128	1	Gear-Timing
757	697607	1	Link-Counterweight
758	697134	1	Counterweight
759	697392	1	Pin-Counterweight
1263	697124	1	Reed-Breather
1264	697104	1	Screw
1270	697156	1	Plug-Counterweight, Avs



Cylinder Head Assembly Briggs and Stratton 282H79-23502

Ref	Part No.	Qty.	Description
5	698148	1	Head-Cylinder
2 3 7	273280	1	Gasket-Cylinder Head
6			
6 13	690360	1	Screw
6 33	695760	1	Valve-Exhaust
6 34	695761	1	Valve-Intake
6 35	691279	1	Spring-Valve
6 36	691279	1	Spring-Valve
6 42	499586	1	Keeper-Valve
6 45	690564	1	Tappet-Valve
2 3 50	690193	1	Manifold-Intake
6			
6 51	692137	1	Gasket-Intake
6 53	690227	1	Stud
6 54	691148	1	Screw
6 192	691986	1	Adjustor-Arm, Rocker
6 238	691843	1	Cap-Valve
6 337	691043	1	Spark Plug
6 383	89838	1	Wrench-Plug, Spark
6 523	697086	1	Dipstick
2 6 524	691032	1	Seal-O Ring
6 525	697184	1	Tube-Dipstick
2 4 617	692138	1	Seal-O Ring
6			
6 635	691909	1	Boot-Spark Plug

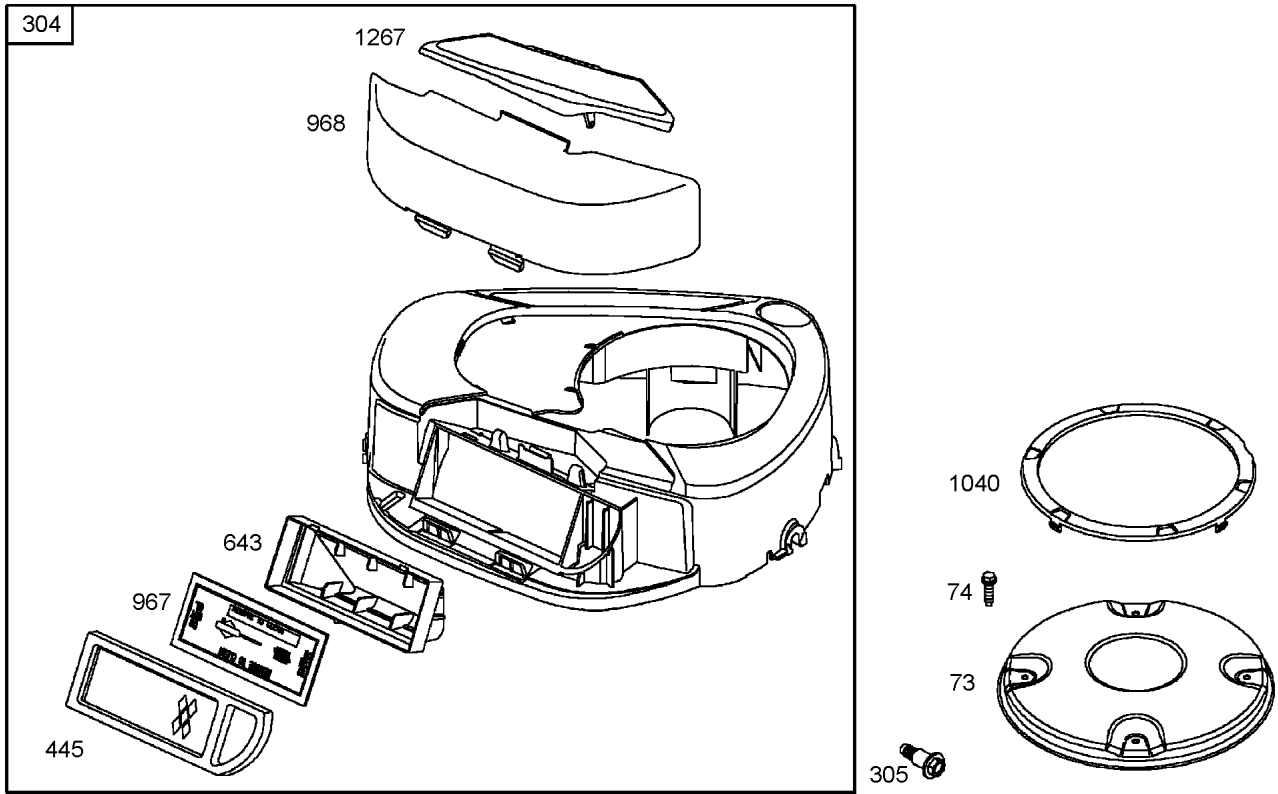
Ref	Part No.	Qty.	Description
6 654	690958	1	Nut
6 830	691095	1	Stud-Arm, Rocker
2 6 842	691031	1	Seal-O Ring
6 847	697611	1	Dipstick And Tube ASM
6 868	690968	1	Seal-Valve
6 914	691108	1	Screw
2 6 1022	272475	1	Gasket-Cover, Rocker
2 3 1023	692492	1	Cover-Rocker
6			
6 1026	692003	1	Rod-Push
6 1026	692011	1	Rod-Push
6 1029	691751	1	Arm-Rocker
6 1034	690822	1	Guide-Rod, Push



Carburetor Assembly Briggs and Stratton 282H79-23502

Ref	Part No.	Qty.	Description
2 3 51	692137	1	Gasket-Intake
4 6			
4 6 93	690602	1	Bushing-Shaft, Throttle
4 6 94	498030	1	Idle Mixture Kit
6 95	691636	1	Screw
6 98	495800	1	Idle Speed Kit
4 6 104	690525	1	Pin-Hinge, Carburetor Float
4 6 105	231855	1	Valve-Needle, Float
4 6 106	690577	1	Seat-Inlet
6 108	690464	1	Valve-Choke
6 108A	692344	1	Valve-Choke
4 6 117	694352	1	Jet-Main (STD)
6 118	697228	1	Jet-Main (High Altitude)
4 6 125	698445	1	Carburetor
6 127	695005	1	Plug-Welch
6 130	691750	1	Valve-Throttle
6 131	494379	1	Throttle Shaft Kit
6 133	494381	1	Float-Carburetor
4 5 137	281165	1	Gasket-Bowl, Float
6			
6 141	495097	1	Choke Shaft Kit
6 141A	495931	1	Choke Shaft Kit
4 6 142	697140	1	Nozzle-Carburetor
6 186	692317	1	Connector-Hose

Ref	Part No.	Qty.	Description
6 186A	698174	1	Connector-Hose
6 187	691050	1	Line-Fuel (Cut To Required Length)
6 240	394358	1	Filter-Fuel
4 5 276	692255	1	Washer-Sealing
6			
6 385A	690297	1	Screw (Fuel Pump)
6 387A	808656	1	Pump-Fuel
6 431	697122	1	Elbow-Intake
6 601	95162	1	Clamp-Hose
6 601A	691038	1	Clamp-Hose
4 6 634	690801	1	Spring / Seal ASM
4 6 634A	690802	1	Spring And Seal ASM
6 692	690572	1	Spring-Detent
6 947	694393	1	Solenoid-Fuel
6 950	695407	1	Screw
6 958	698183	1	Valve-Shut Off, Fuel
6 975	495933	1	Bowl-Float
4 6 987	691326	1	Seal-Shaft, Throttle
6 1091	691333	1	Cap-Limiter
2 4 1266	691917	1	Seal-O Ring
6			
4 6 1266A	697123	1	Seal-O Ring

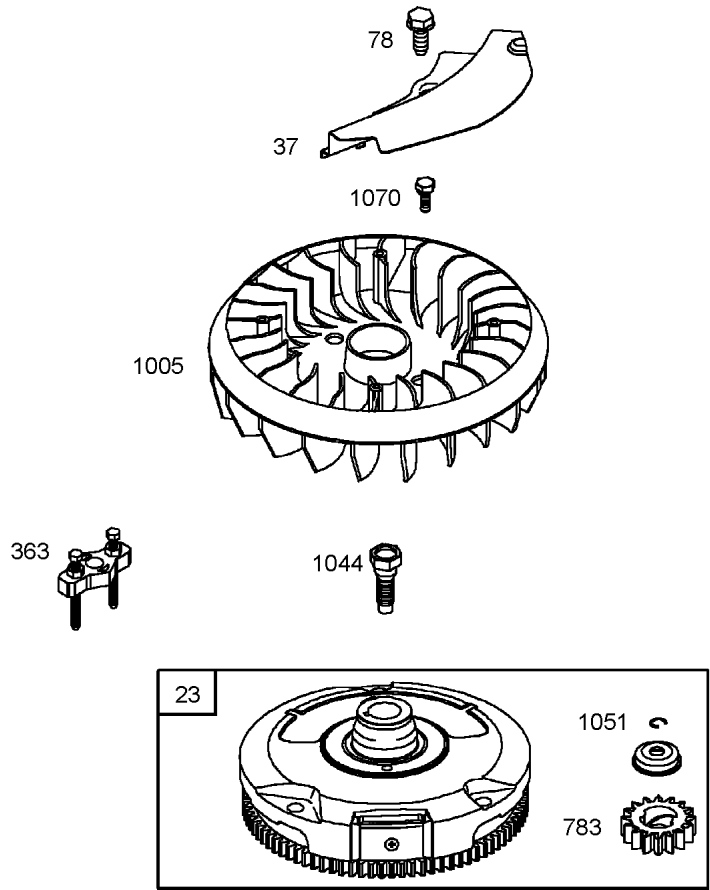


1036 EMISSION LABEL

Blower Housing Assembly Briggs and Stratton 282H79-23502

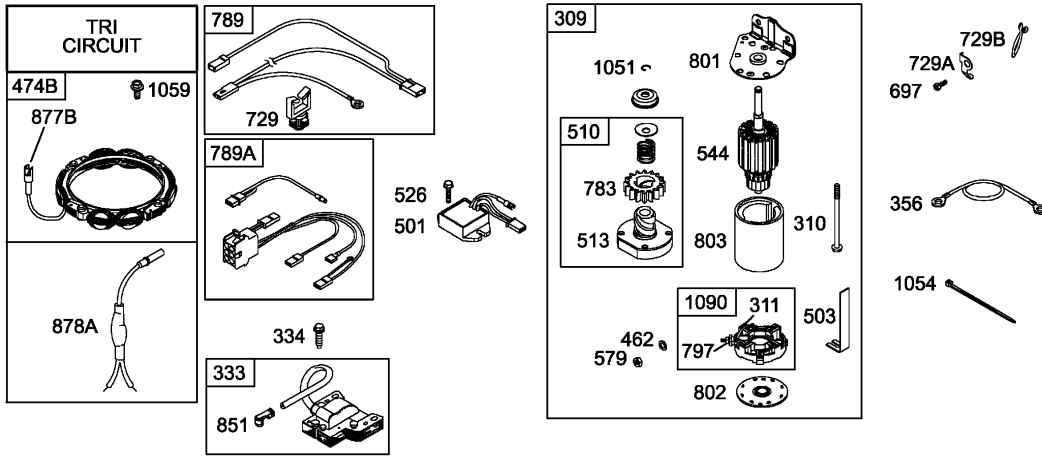
Ref	Part No.	Qty.	Description
73	697133	1	Screen-Rotating
74	697897	1	Screw
304	698402	1	Housing-Blower
305	697102	1	Screw
445	698083	1	Filter-Cartridge, Air Cleaner
643	698401	1	Retainer-Filter, Air
967	697015	1	Filter-Cleaner, Pre
968	698403	1	Cover-Cleaner, Air
1036	695700	1	Label-Emission
1040	698368	1	Plate-Trim
1267	697419	1	Latch-Housing, Blower

--	--	--	--



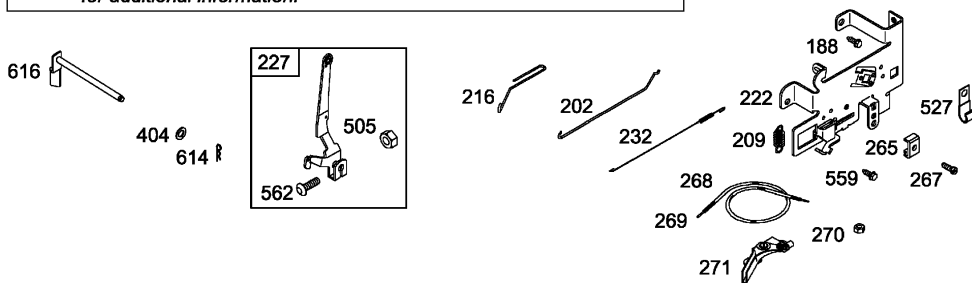
Flywheel Assembly Briggs and Stratton 282H79-23502

Ref	Part No.	Qty.	Description
⑥23	693556	1	Flywheel
⑥37	697352	1	Guard-Flywheel
⑥78	691003	1	Screw
⑥363	19203	1	Puller-Flywheel
⑥783	693713	1	Gear-Pinion
⑥1005	699043	1	Fan-Flywheel
⑥1044	691658	1	Screw-Crankshaft Extension
⑥1051	691265	1	Ring-Retaining
⑥1070	690372	1	Screw



NOTE: All stators use a No. 1119 mounting screw.

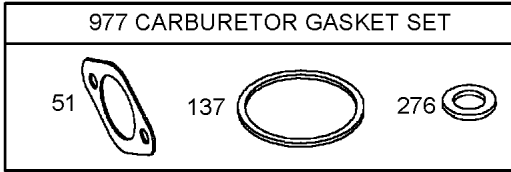
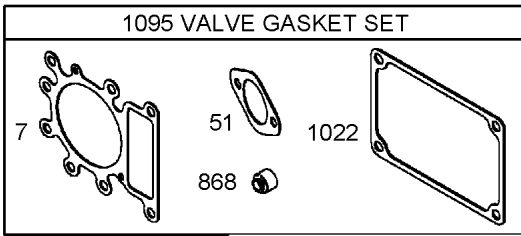
NOTE: The proper flywheel part number and/or the alternator magnet size will determine the alternator type or output. See repair instruction manual for additional information.



Starter and Electrical Assembly Briggs and Stratton 282H79-23502

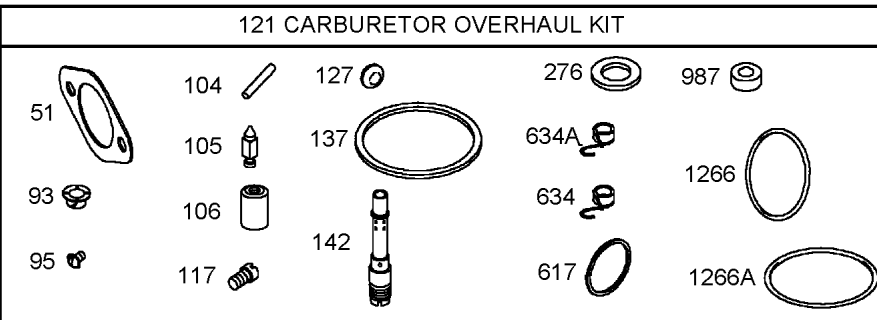
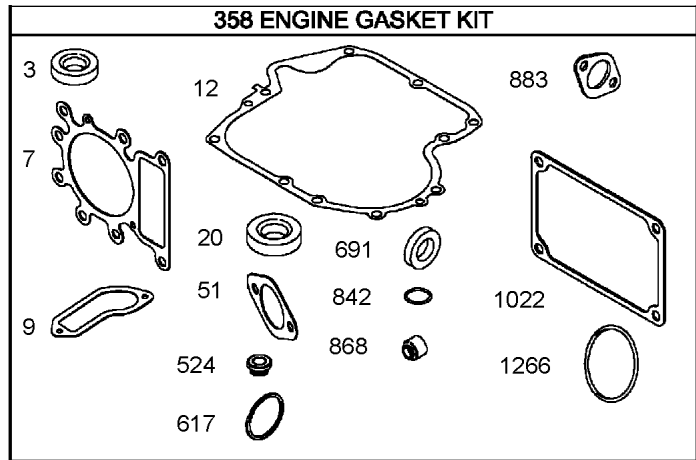
Ref	Part No.	Qty.	Description
⑥188	691693	1	Screw
⑥202	691841	1	Link-Governor, Mechanical
⑥209	691795	1	Spring-Governor
⑥216	691840	1	Link-Choke
⑥222	694042	1	Bracket-Control
⑥227	691374	1	Lever-Control, Governor
⑥232	691842	1	Spring-Link, Governor
⑥265	691024	1	Clamp-Casing
⑥267	690804	1	Screw
⑥268	691025	1	Casing-Control Wire (Cut To Required Length)
⑥269	691026	1	Wire-Control (Cut To Required Length)
⑥270	691027	1	Nut (Control Wire Casing)
⑥271	691028	1	Lever-Control
⑥309	693551	1	Motor-Starter
⑥310	690323	1	Bolt
⑥311	497608	1	Brush Set
⑥333	492341	1	Armature-Magneto
⑥334	691061	1	Screw
⑥356	697089	1	Stop-Wire
⑥404	691691	1	Washer
⑥462	691261	1	Washer
⑥474B	696457	1	Alternator

Ref	Part No.	Qty.	Description
⑥501	691188	1	Regulator
⑥503	691532	1	Strap-Starter
⑥505	691251	1	Nut
⑥510	693699	1	Drive-Starter
⑥513	692024	1	Clutch-Drive
⑥526	697088	1	Screw
⑥527	698467	1	Clamp-Tube
⑥544	692034	1	Armature-Starter
⑥559	697561	1	Screw (Remote Choke Stop)
⑥562	691119	1	Screw
⑥579	691029	1	Nut
⑥614	691620	1	Pin-Cotter
⑥616	692012	1	Crank-Governor
⑥697	690372	1	Screw
⑥729	691335	1	Clip-Wire
⑥729A	691224	1	Clip-Wire
⑥729B	694123	1	Clip-Wire
⑥783	693713	1	Gear-Pinion
⑥789	692037	1	Wiring-Harness
⑥789A	698329	1	Harness-Wiring
⑥797	693167	1	Nut
⑥801	691283	1	Cap-Drive
⑥802	691286	1	Cap-End
⑥803	693757	1	Housing-Starter



1019 LABEL KIT 1330 REPAIR MANUAL

1058 OWNER'S MANUAL



Gasket Assembly Briggs and Stratton 282H79-23502

Ref	Part No.	Qty.	Description
263	391086	1	Seal-Oil
267	273280	1	Gasket-Head, Cylinder
6			
269	697109	1	Gasket-Breather
2612	697110	1	Gasket-Crankcase
2620	690947	1	Seal-Oil
2651	692137	1	Gasket-Intake
6			
2693	690602	1	Bushing-Shaft, Throttle
6			
695	691636	1	Screw
66104	690525	1	Pin-Hinge, Carburetor Float
66105	231855	1	Valve-Needle, Float
66106	690577	1	Seat-Inlet
66117	694352	1	Jet-Main (STD)
6121	697241	1	Carburetor Overhaul Kit
6127	695005	1	Plug-Welch
66137	281165	1	Gasket-Bowl, Float
66142	697140	1	Nozzle-Carburetor
66276	692255	1	Washer-Sealing
6358	697151	1	Engine Gasket Set
26524	691032	1	Seal-O Ring
26617	692138	1	Seal-O Ring
6			
66634	690801	1	Spring / Seal ASM

Ref	Part No.	Qty.	Description
66634A	690802	1	Spring And Seal ASM
26691	692407	1	Seal-Shaft, Governor
26842	691031	1	Seal-O Ring
26868	690968	1	Seal-Valve
6			
26883	692236	1	Gasket-Exhaust
6977	690192	1	Carburetor Gasket Set
6987	691326	1	Seal-Shaft, Throttle
61019	698814	1	Kit-Label
261022	272475	1	Gasket-Cover, Rocker
6			
61058	275038	1	Owner's Manual
61095	691581	1	Valve Gasket Set
661266	691917	1	Seal-O Ring
661266A	697123	1	Seal-O Ring
61330	272147	1	Repair Manual

