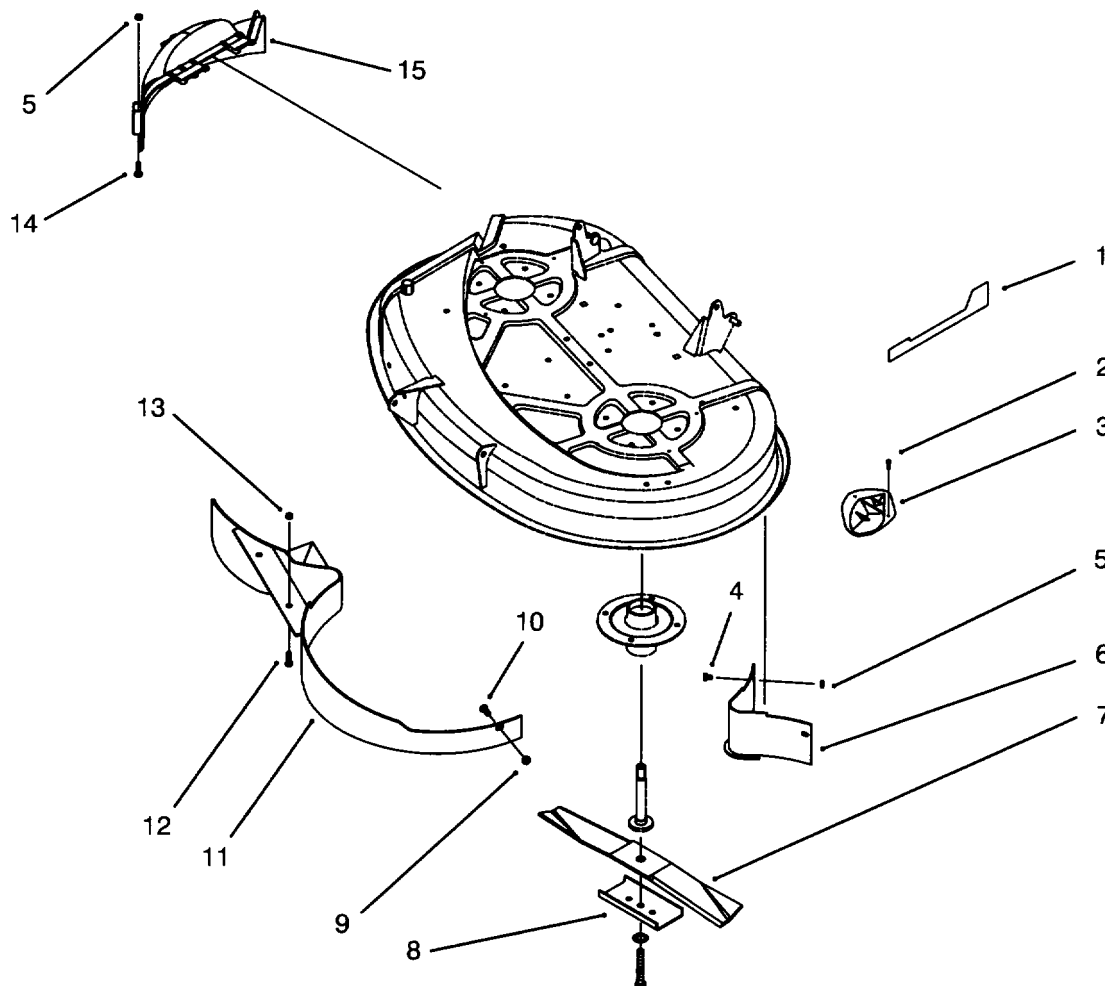


**38" RECYCLER KIT****MODEL NO. 79170****PARTS  
CATALOG**

C-1594

**BAFFLE & BLADE ASSEMBLY**

Ref. No.	Part No.	Description	No. Used
1	79-1311	Decal - 38" Recycler	1
2	32144-111	Screw - Plastite	8
3	76-2160	Kicker - Plate	4
4	321-4	Screw - Hex Hd Cap	2
5	3296-42	Nut - Lock	2
6	79-1640	Baffle - Deck Rear	1
7	14-7799	Blade - 38" Recycler	1
8	80-0510	Stiffener - Blade	2

Ref. No.	Part No.	Description	No. Used
9	3296-29	Nut - Lock	1
10	3230-1	Bolt - Carriage	1
11	79-1600	Baffle - 38" Recycler	1
12	323-5	Screw - Hex Hd. Cap	2
13	3296-39	Nut - Lock	2
14	321-14	Screw - Hex Hd. Cap	2
15	88-4430	Cover - 38" Recycler	1

## PRODUCT CHANGES

In an effort to make improvements available to TORO owners as quickly as possible, minor changes are incorporated into Toro's products from time to time that do not become immediately shown in the Parts Catalog. If such a change has been made in your unit, which is not reflected in your manual, see your TORO Distributor or his Authorized TORO Service Dealer for information and part numbers.

## COUNTRIES OTHER THAN THE UNITED STATES OR CANADA

Customers who have purchased TORO products exported from the United States or Canada should contact their Toro Distributor (Dealer) to obtain guarantee policies for your country, province or state. If for any reason you are dissatisfied with your Distributor's

service or have difficulty obtaining guarantee information, contact the TORO importer. If all other remedies fail, you may contact us at The Toro Company.

## MAINTENANCE RECORD

[illegible]