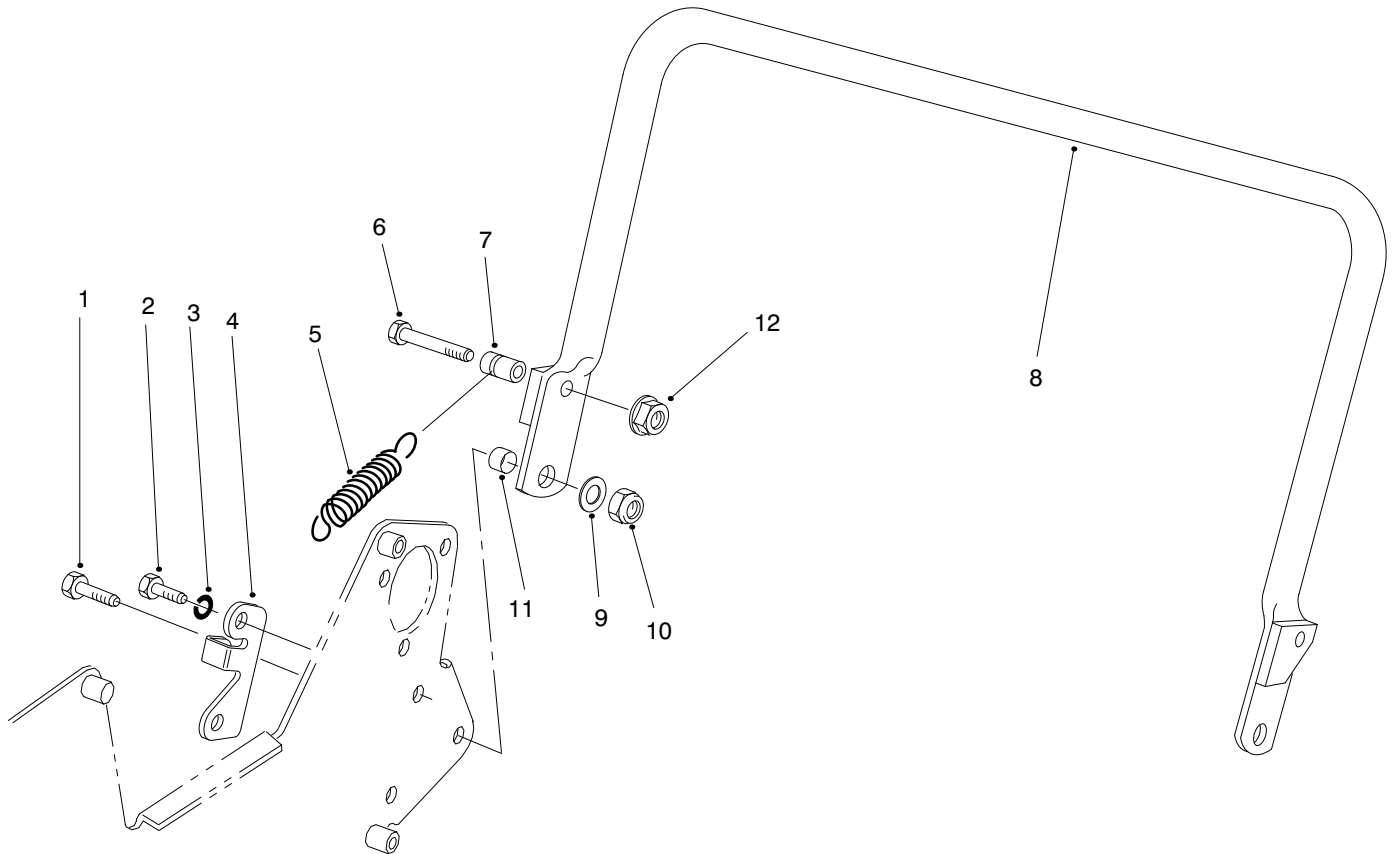




MODEL NO. 04121 – 40001 &amp; UP

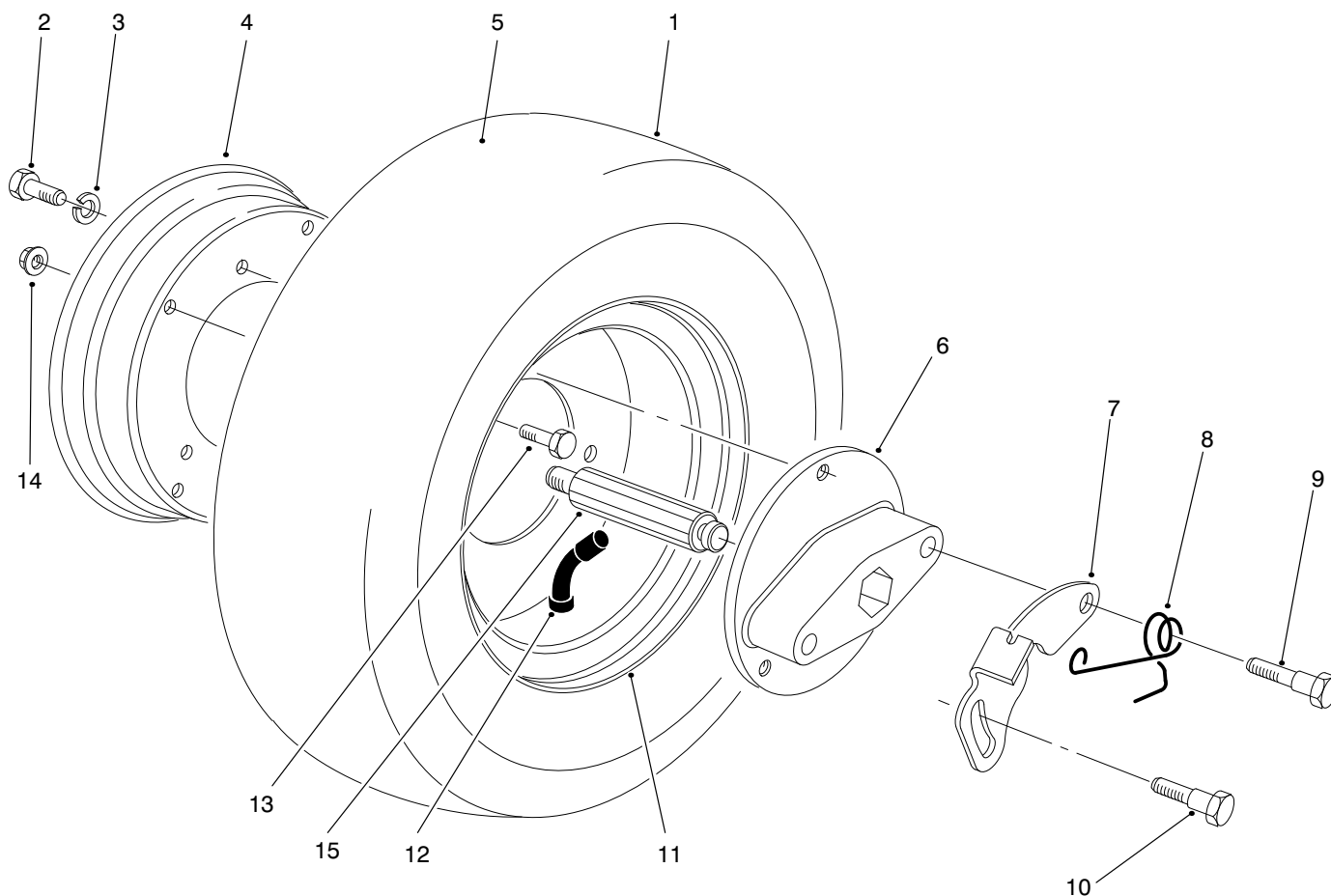
**PARTS  
CATALOG**
**WHEEL & KICKSTAND KIT  
GREENSMASTER®1000**


T-0948-1

**KICKSTAND ASSEMBLY**

| Ref. No. | Part No. | Description        | No. Used |
|----------|----------|--------------------|----------|
| 1        | 322-5    | Screw – HH         | 2        |
| 2        | 323-5    | Screw – HH         | 2        |
| 3        | 3253-21  | Washer – Lock      | 2        |
| 4        | 65-7890  | Bracket – Spring   | 1        |
| 5        | 65-7880  | Spring – Extension | 1        |
| 6        | 322-10   | Screw – HH         | 1        |

| Ref. No. | Part No. | Description             | No. Used |
|----------|----------|-------------------------|----------|
| 7        | 65-7900  | Retainer – Spring       | 1        |
| 8        | 65-7850  | Kickstand               | 1        |
| 9        | 3256-2   | Washer – Flat           | 2        |
| 10       | 3296-29  | Nut – Lock              | 2        |
| 11       | 65-7910  | Spacer                  | 2        |
| 12       | 32128-25 | Nut – Lock, Flange Head | 1        |



T-0939-1

## TRANSPORT WHEEL ASSEMBLY

| Ref. No.          | Part No. | Description                               | No. Used |
|-------------------|----------|---|----------|
| 1                 | 88-7570  | Asm-Transport Wheel<br>(Incl. Ref. #2-14) | 2        |
| 2                 | 48-7700  | Screw - HH                                | 6        |
| 3                 | 68-9420  | Washer - Lock                             | 6        |
| 4                 | 65-7970  | Rim - Shallow                             | 2        |
| 5                 | 65-7940  | Tire                                      | 2        |
| 6                 | 88-7610  | Hub                                       | 2        |
| 7                 | 65-8020  | Lever - Retaining                         | 2        |
| 8                 | 65-8050  | Spring                                    | 2        |
| * Not Illustrated |          |   |          |

| Ref. No. | Part No. | Description         | No. Used |
|----------|----------|---------------------|----------|
| 9        | 65-8030  | Bolt                | 2        |
| 10       | 65-8040  | Bolt                | 2        |
| 11       | 65-7960  | Rim - Deep          | 2        |
| 12       | 65-7950  | Tube - Inner        | 2        |
| 13       | 48-7610  | Screw - HH          | 8        |
| 14       | 65-7980  | Nut - Flange        | 8        |
| 15       | 88-7580  | Shaft - Wheel, L.H. | 1        |
| *        | 88-7590  | Shaft - Wheel, R.H. | 1        |