

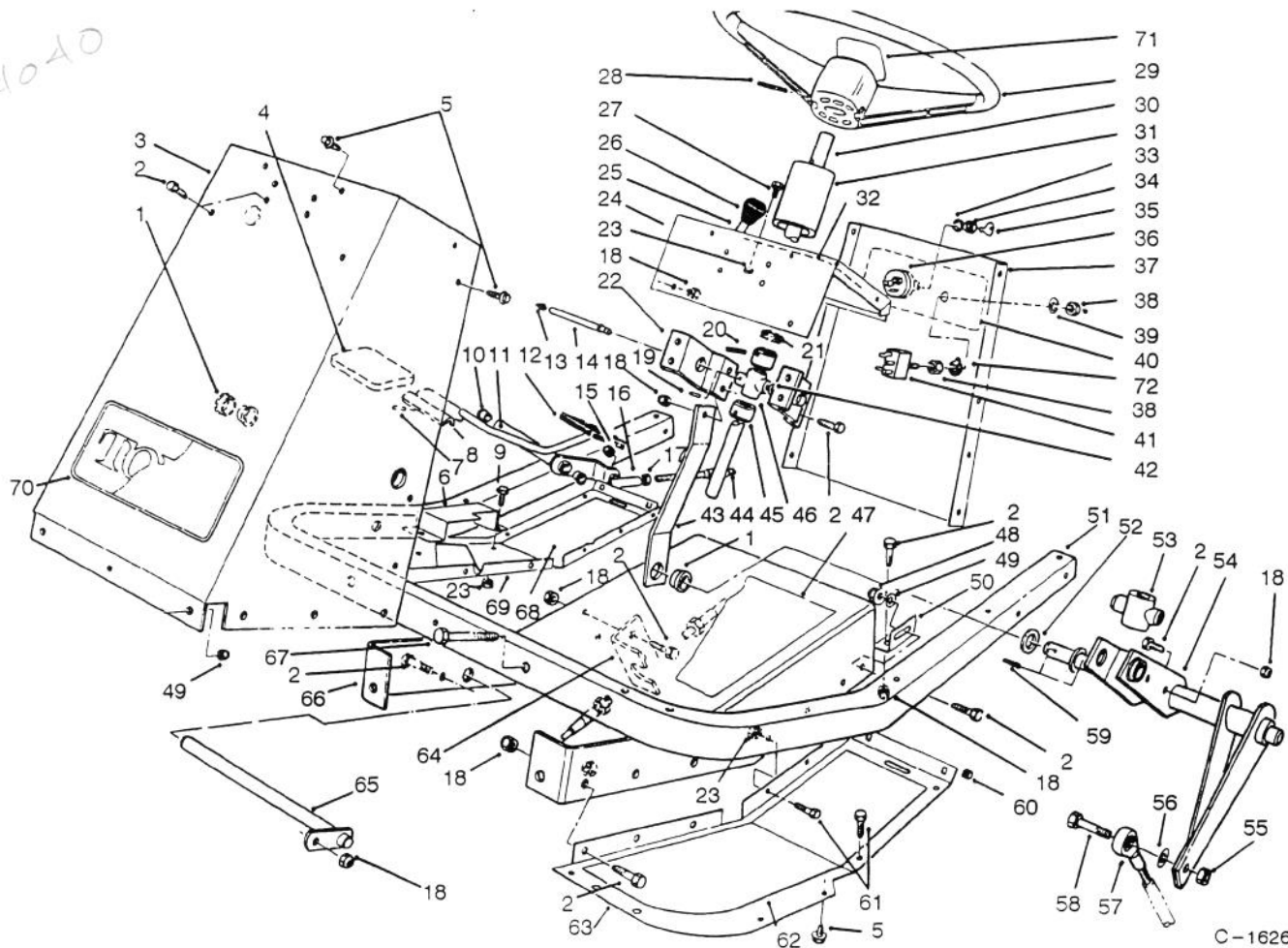


MODEL NO. 30718 - 490001 & UP

PARTS
CATALOG

PROLINE 118

62-4040

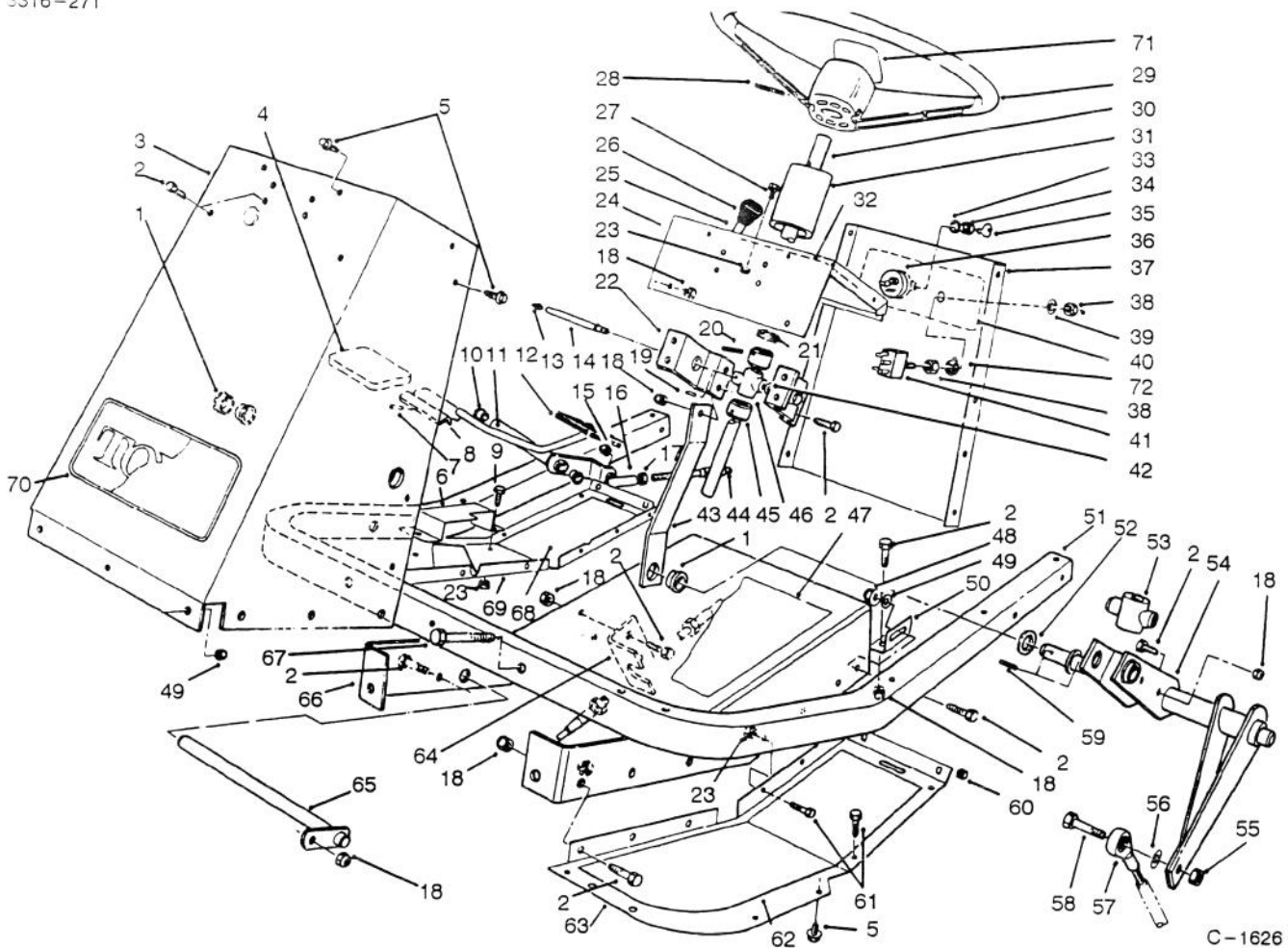


C-1626

FRAME & STEERING ASSEMBLY

Ref. No.	Part No.	Description	No. Used
1	27-9080	Bushing	3
2	322-4	Screw - Hex. Hd.	19
3	54-1900	Tower - Front	1
4	49-6470	Pad - Accelerator	1
5	46-8560	Screw - Hex. Hd.	25
6	80-4930	Footrest - Pedal	1
7	32121-45	Pin - Roll	1
8	80-4920	Pedal - Accelerator	1
9	321-3	Screw - Hex. Hd.	2
10	256-156	Bushing	2
11	74-0110	Pedal - Traction (Incl. Ref. #10)	1
12	49-6430	Pad - Reverse	1
13	302-22	Fitting - Grease	1
14	59-1610	Tube - Grease Fitting	1

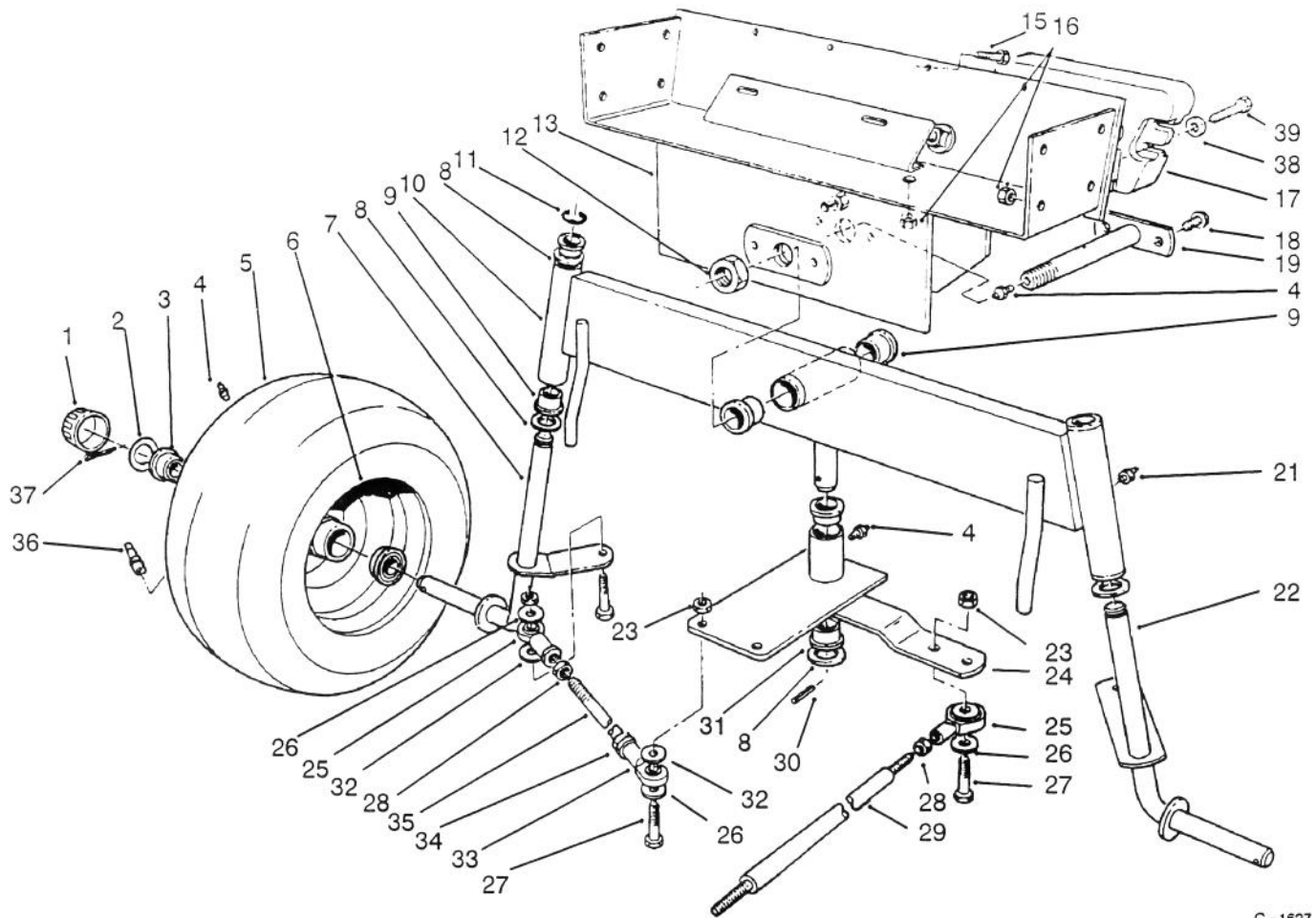
Ref. No.	Part No.	Description	No. Used
15	3296-3	Nut - Hex.	1
16	2411-34	Ball Joint	1
17	3220-1	Nut - Jam	1
18	3296-29	Nut - Lock	24
19	32121-20	Pin - Roll	1
20	32121-31	Pin - Roll	2
21	21-9260	Cover - Dust	1
22	54-1950	Bracket - Support Bearing	2
23	3296-42	Nut - Lock	16
24	54-1000	Tower - Top	1
25	54-1451	Control - Throttle, Choke	2
26	66-0120	Knob	2
27	321-2	Screw - Hex. Hd.	4
28	32121-10	Pin - Roll	1



FRAME & STEERING ASSEMBLY

Ref. No.	Part No.	Description	No. Used
29	76-1420	Wheel - Steering	1
30	62-6780	Shaft - Steering	1
31	47-1980	Cover Steering Shaft	1
32	92-6278	Decal - Throttle Choke	1
33		Washer - Lock	1
34		Nut - Lock	1
35	63-8360	Key	2
36	88-9830	Switch - Ignition (Incl. Ref. #33-35)	1
37	92-6266	Panel - Tower Rear	1
38	3218-19	Nut	2
39	3254-20	Lockwasher	1
40	92-6277	Decal - Switch	1
41	85-4980	Switch - Clutch & Brake (Incl. Ref. # 38)	1
42	3290-440	Washer - Belleville	1
43	54-1340	Link - Steering	1
44	54-2640	Cable - Traction Control	1
45	28-3940	Collar - Steering Shaft	2
46	60-9050	Bearing - Steering Shaft	1
47	54-0880	Decal - Tunnel	1
48	32128-20	Nut - Flange Lock	2
49	3256-23	Washer - Flat	4
50	54-1440	Bracket - Tunnel	2

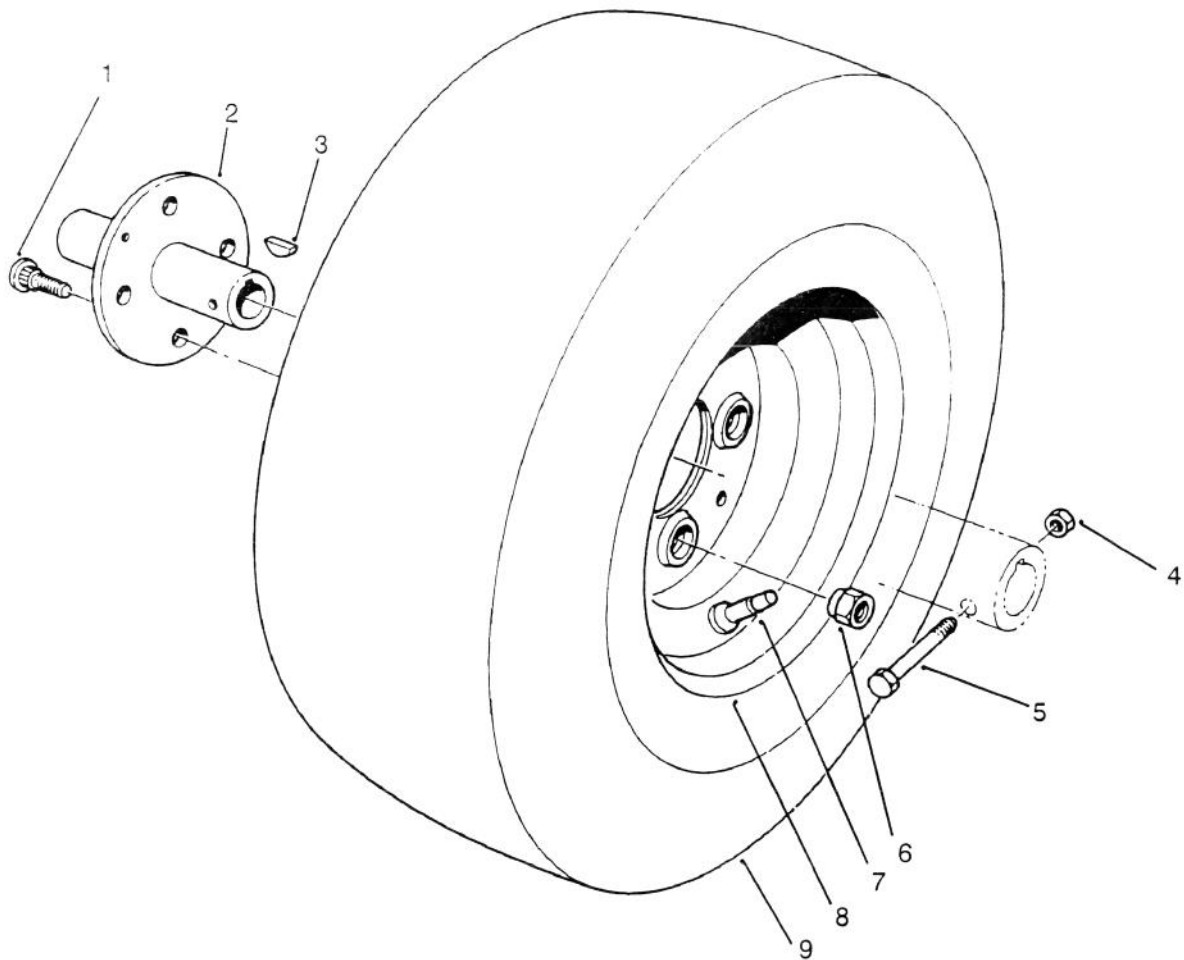
Ref. No.	Part No.	Description	No. Used
51	60-9140	Frame - Footrest	1
52	3-6498	Washer - Thrust	2
53	54-2630	Follower - Steering Shaft	1
54	54-2040	Follower Lever	1
55	32152-9	Nut - Lock	1
56	3256-4	Washer - Flat	1
57	251-304	Rod End	1
58	324-7	Screw - Hex. Hd.	1
59	32121-77	Pin Roll	2
60	32115-5	Nut - Square	4
61	321-4	Screw - Hex. Hd.	14
62	54-2260	Pad Footrest L.H.	1
63	54-1470	Footrest - L.H.	1
64	54-1770	Bracket - Cable Traction	1
65	59-1550	Pedal - Shaft	1
66	60-9150	Tunnel	1
67	322-10	Screw - Hex. Hd.	2
68	54-2270	Pad - Footrest R.H.	1
69	80-4910	Footrest - R.H.	1
70	62-7400	Decal - Toro	1
71	78-0370	Insert - Steering Wheel	1
72	102950	Washer - Tab	1
73	105805	Nut	1



C-1627

REAR AXLE ASSEMBLY

Ref. No.	Part No.	Description	No. Used	Ref. No.	Part No.	Description	No. Used
1	61-9780	Hub Cap	2	22	54-0560	Spindle L. H.	1
2	28-2480	Washer - Flat	2	23	32152-9	Nut	5
3	251-210	Bearing - Ball	4	24	92-6257	Plate- Pivot (Incl. Ref. #4 & 30)	1
4	302-5	Fitting - Grease	4	25	251-305	Rod End	3
5	231-126	Tire	2	26	3256-4	Washer - Flat	7
6	242-60	Rim	2	27	324-7	Screw	5
7	54-0570	Spindle R.H.	1	28	3220-4	Nut - Jam	3
8	3-6498	Washer - Thrust	5	29	54-1491	Rod - Steering , Rear	1
9	46-6680	Bushing	6	30	32121-51	Pin - Roll	1
10	92-6255	Axle - Rear (Incl. Ref. #9 & 20)	1	31	27-9080	Bushing	2
11	32151-48	Ring - Retaining	2	32	62-4420	Spacer	9
12	3296-41	Nut - Hex.	1	33	251-304	Rod End	2
13	54-0330	Frame - Rear	1	34	3220-19	Nut - Jam	2
15	321-4	Screw	4	35	57-3100	Tie Rod - Steering	2
16	3296-29	Nut	8	36	232-27	Valve Stem w/Cap	2
17	24-5790	Weight - Rear	1	37	3272-12	Pin - Cotter	2
18	32144-15	Screw	2	38	325-6	Screw	2
19	59-1500	Pivot - Axle	1	39	3253-7	Washer	2
21	302-49	Fitting - Grease	3				

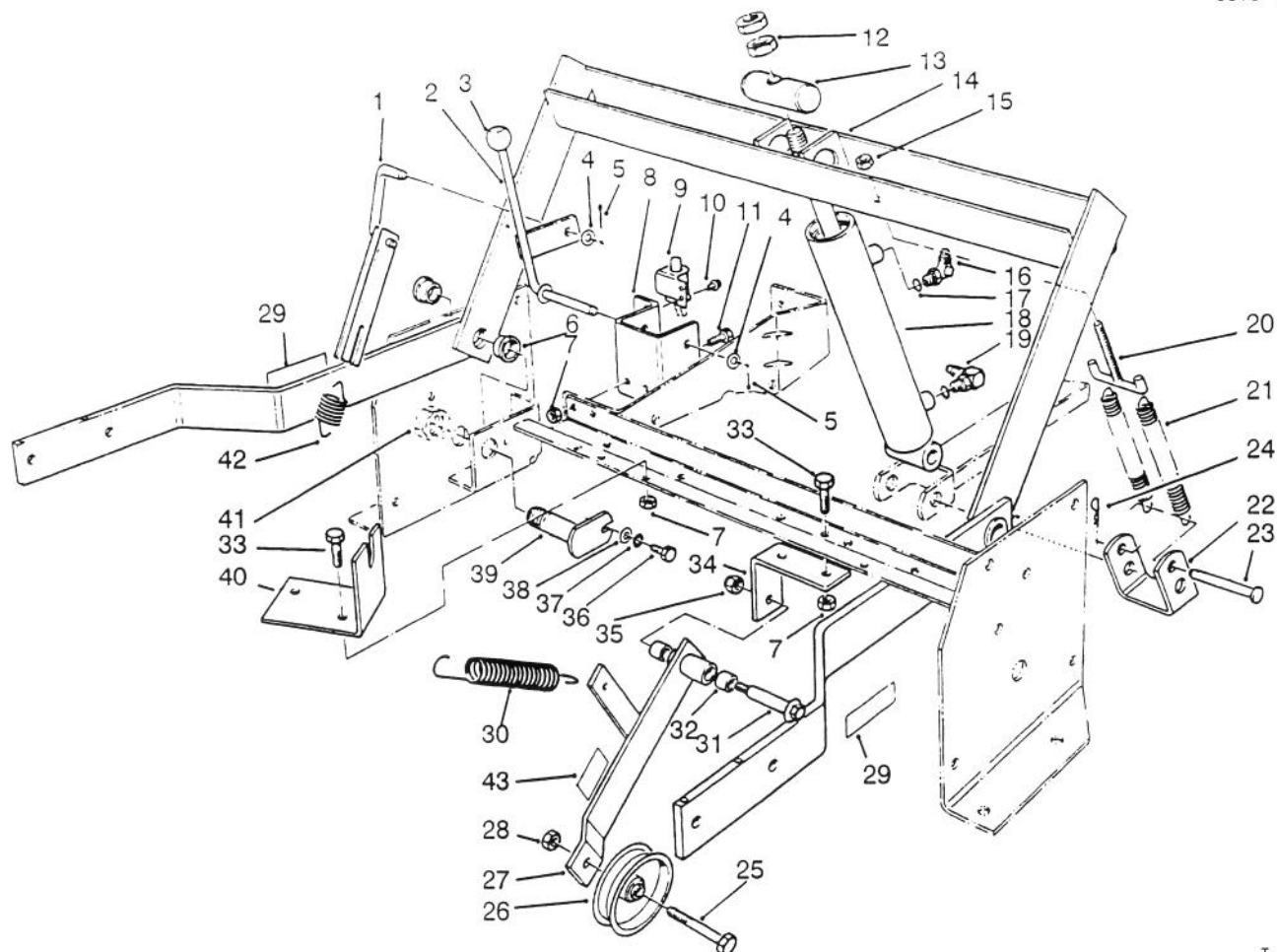


T-0071

FRONT WHEEL ASSEMBLY

Ref. No.	Part No.	Description	No. Used
1	242-71	Bolt - Wheel	8
2	54-0140	Hub - Wheel	2
3	3257-10	Key - Woodruff	2
4	3296-29	Nut - Lock	2
5	322-10	Screw	2

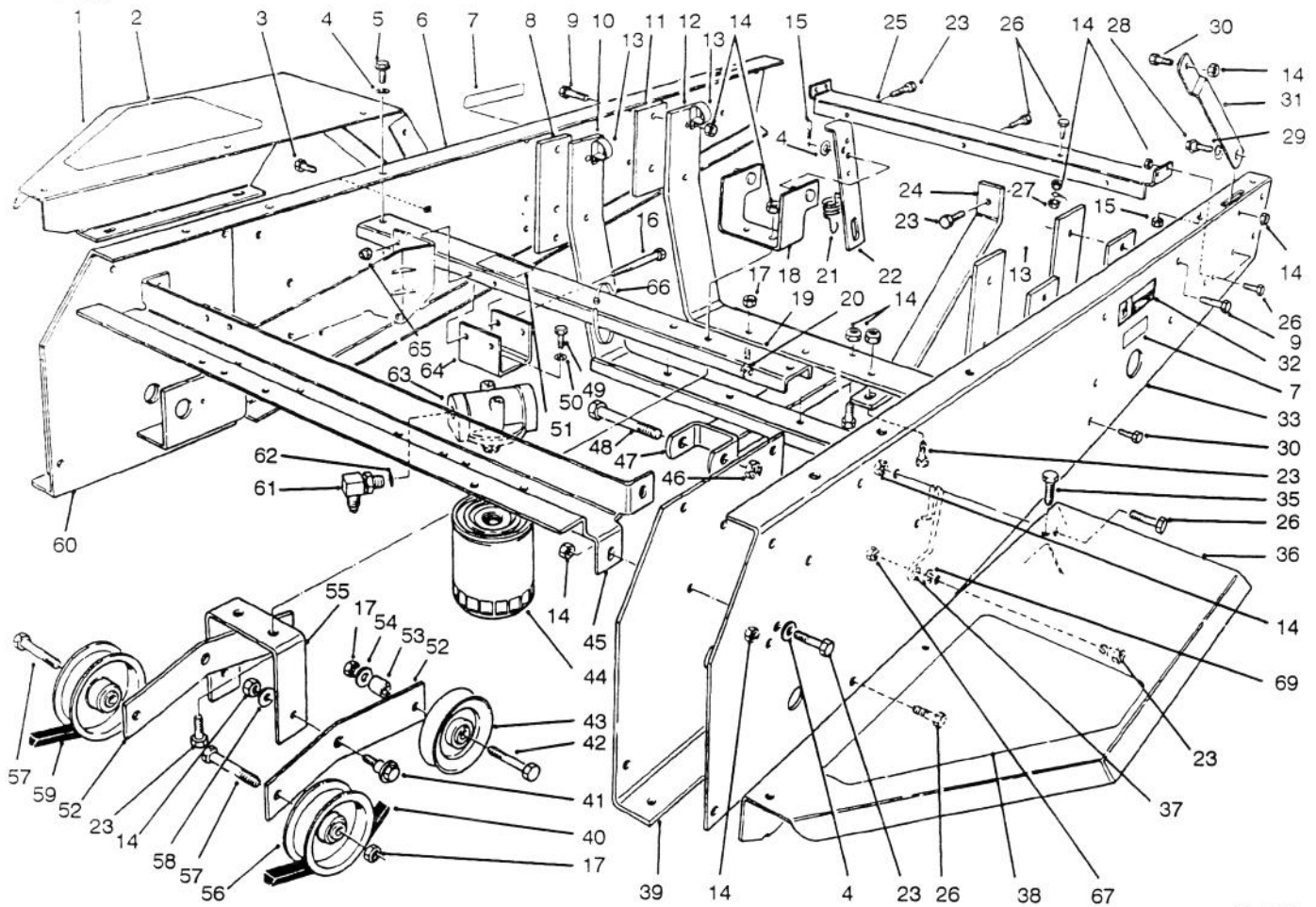
Ref. No.	Part No.	Description	No. Used
6	242-50	Nut	8
7	232-27	Valve Stem w/Cap	2
8	242-76	Rim	2
9	231-122	Tire	2



T-0076

PARKING BRAKE & LIFT FRAME ASSEMBLY

Ref. No.	Part No.	Description	No. Used	Ref. No.	Part No.	Description	No. Used
1	54-2120	Link - Parking Brake	1	23	283-55	Pin - Clevis	1
2	54-2110	Lever - Brake	1	24	3290-355	Pin - Cotter	1
3	233-37	Knob	1	25	323-10	Screw	1
4	3256-24	Washer - Flat	2	26	36-3220	Pulley - Idler	1
5	3272-10	Pin - Cotter	2	27	12-1109	Lever - Idler (Incl. Ref. #43)	1
6	27-9080	Bushing	4	28	3296-44	Nut	1
7	3296-29	Nut	6	29	61-3610	Decal - Warning	2
8	54-1270	Bracket - Parking Brake	1	30	54-1170	Spring - Extension	1
9	55-7120	Switch - Brake	1	31	27-6230	Bolt - Shoulder	1
10	32144-1	Screw - Thread Forming	2	32	256-154	Bushing	2
11	322-6	Screw	2	33	322-4	Screw	4
12	3220-6	Nut - Jam	2	34	55-7310	Bracket - Idler	1
13	54-2000	Pin - Pivot	1	35	3296-6	Nut	1
14	66-1570	Frame - Lift (Incl. Ref. #6)	1	36	321-2	Screw	2
15	32153-3	Nut	2	37	3253-3	Washer	2
16	353-431	Fitting - 45°	1	38	3256-1	Washer	2
17	237-78	"O"Ring	2	39	54-2100	Pin - Pivot	2
18	54-0150	Cylinder - Lift	1	40	56-6920	Bracket - Cable Extension	1
19	353-375	Fitting - 90°	1	41	3296-15	Nut	2
20	56-3320	"T"Hook	1	42	54-0960	Spring - Parking Brake	1
21	56-2760	Spring - Extension	2	43	55-4300	Decal	1
22	56-3370	Bracket - Spring	2				

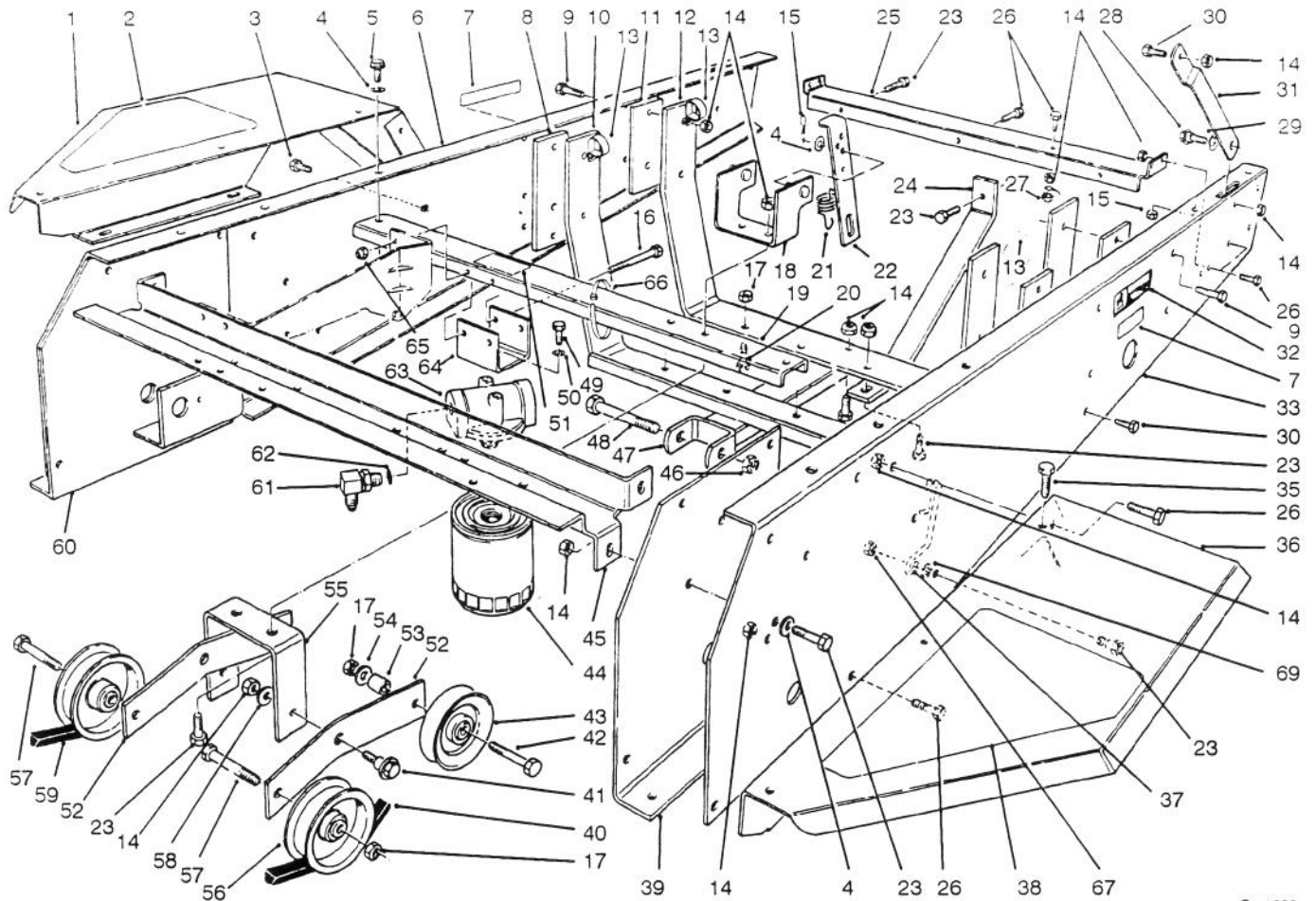


C-1628

FRAME & JACKSHAFT ASSEMBLY

Ref. No.	Part No.	Description	No. Used
1	54-1930	Fender R.H.	1
2	92-6292	Pad - Fender R.H.	1
3	3234-14	Screw	4
4	3256-23	Washer - Flat	8
5	32144-11	Screw - Thread Forming	2
6	54-1910	Channel - Side R.H.	1
7	77-3100	Decal - Caution	2
8	54-1800	Plate - Engine Front	2
9	322-6	Screw	8
10	92-6250	Mount - Engine	1
11	54-1810	Plate - Engine, Rear	2
12	92-6251	Mount - Engine	1
13	2412-100	"J"Clamp	4
14	3296-29	Nut	33
15	3290-250	Pin - Cotter	2
16	321-14	Screw	2
17	3296-44	Nut	6
18	54-2070	Anchor - Spring	1
19	54-2500	Channel - Middle	1
20	323-7	Screw	3
21	54-1410	Spring - Idler	2
22	54-1130	Link - Idler Anchor	2

Ref. No.	Part No.	Description	No. Used
23	322-6	Screw	11
24	92-6254	Bar - Tension	1
25	54-1830	Support - Shield	1
26	322-4	Screw	13
27	32149-1	Nut - Lock	1
28	27-0410	Bolt - Shoulder	2
29	3290-211	Washer - Spring	2
30	322-2	Screw	4
31	54-1870	Stop - Hood, Lower	2
32	54-0910	Decal - Warning	1
33	54-1920	Channel - Side L.H.	1
35	46-8560	Screw	6
36	54-1940	Fender L.H.	1
37	55-4860	Guide - Belt	1
38	92-2293	Pad - Fender L.H.	1
39	54-460	Axle Stand - L.H.	1
40	5-280	JackShaft - "V"Belt	1
41	19-70	Bolt - Shoulder	2
42	323-11	Screw	2
43	62-4530	Idler - "V"Belt	2
44	54-0110	Filter - Transmission Oil	1
45	54-1010	Channel - Front	1

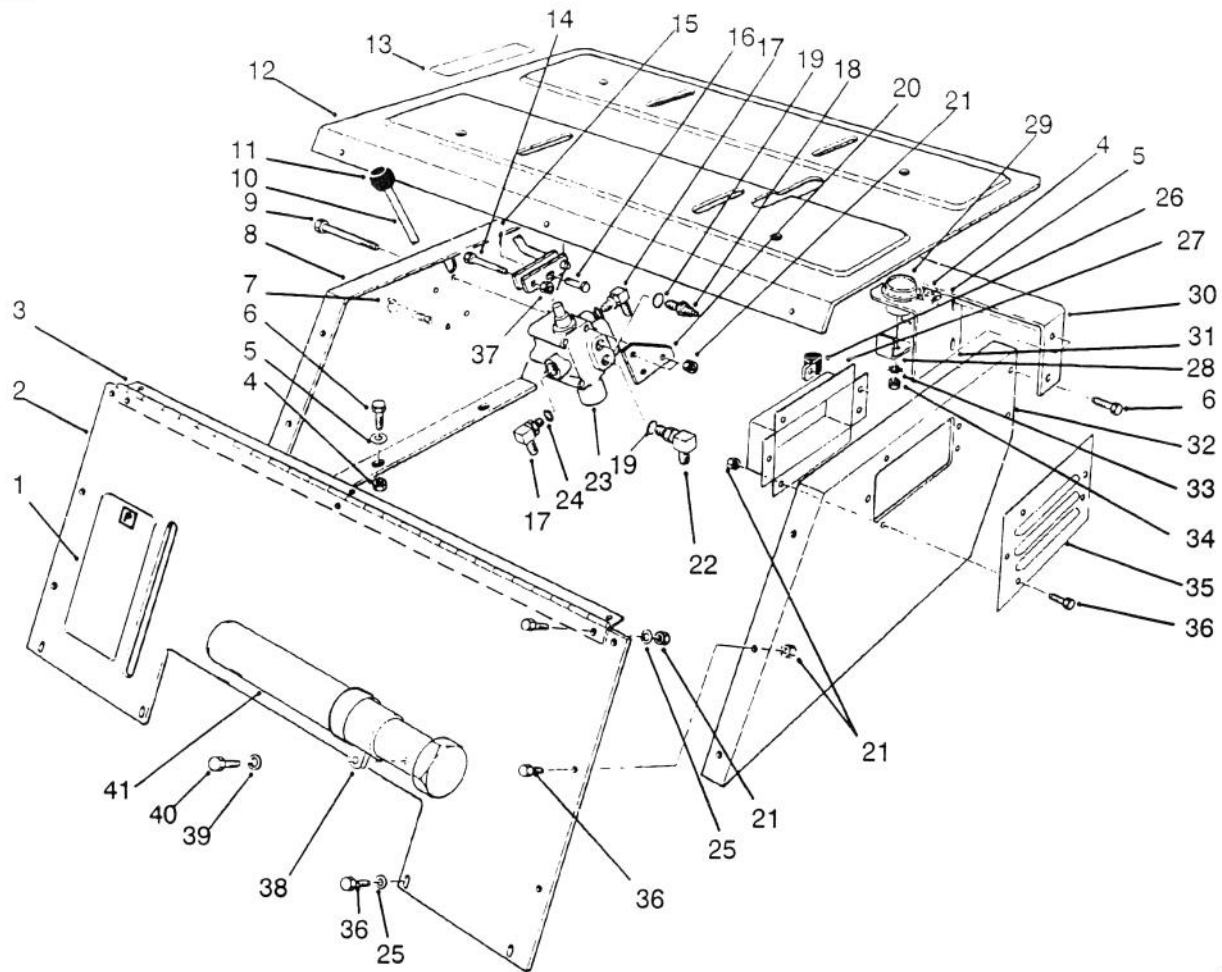


C-1628

FRAME & JACKSHAFT ASSEMBLY (Continued)

Ref. No.	Part No.	Description	No. Used
46	3296-61	Nut	1
47	92-6252	Mount - Cylinder	1
48	327-24	Screw	1
49	321-3	Screw	2
50	3253-3	Washer - Lock	2
51	53-4430	Decal - Oil	1
52	54-9200	Lever - Idler	2
53	37-7250	Spacer	2
54	3256-3	Washer - Flat	2
55	54-1060	Bracket - Idler Mount	1
56	62-4540	Idler - Flat	2
57	323-9	Screw	2

Ref. No.	Part No.	Description	No. Used
58	23-1120	Washer - Flat	2
59	54-1390	"V"Belt - Traction	1
60	54-0450	Axle Stand R.H.	1
61	353-371	Fitting - 90°	2
62	237-79	"O"Ring	1
63	54-0100	Filter Head Assembly	1
64	54-1120	Bracket - Filter Head	1
65	3296-42	Nut - Lock	2
66	3290-379	Cable Tie	7
67	32128-20	Nut - Flange Lock	1
69	3255-8	Washer - Lock, Ext. Tooth	1

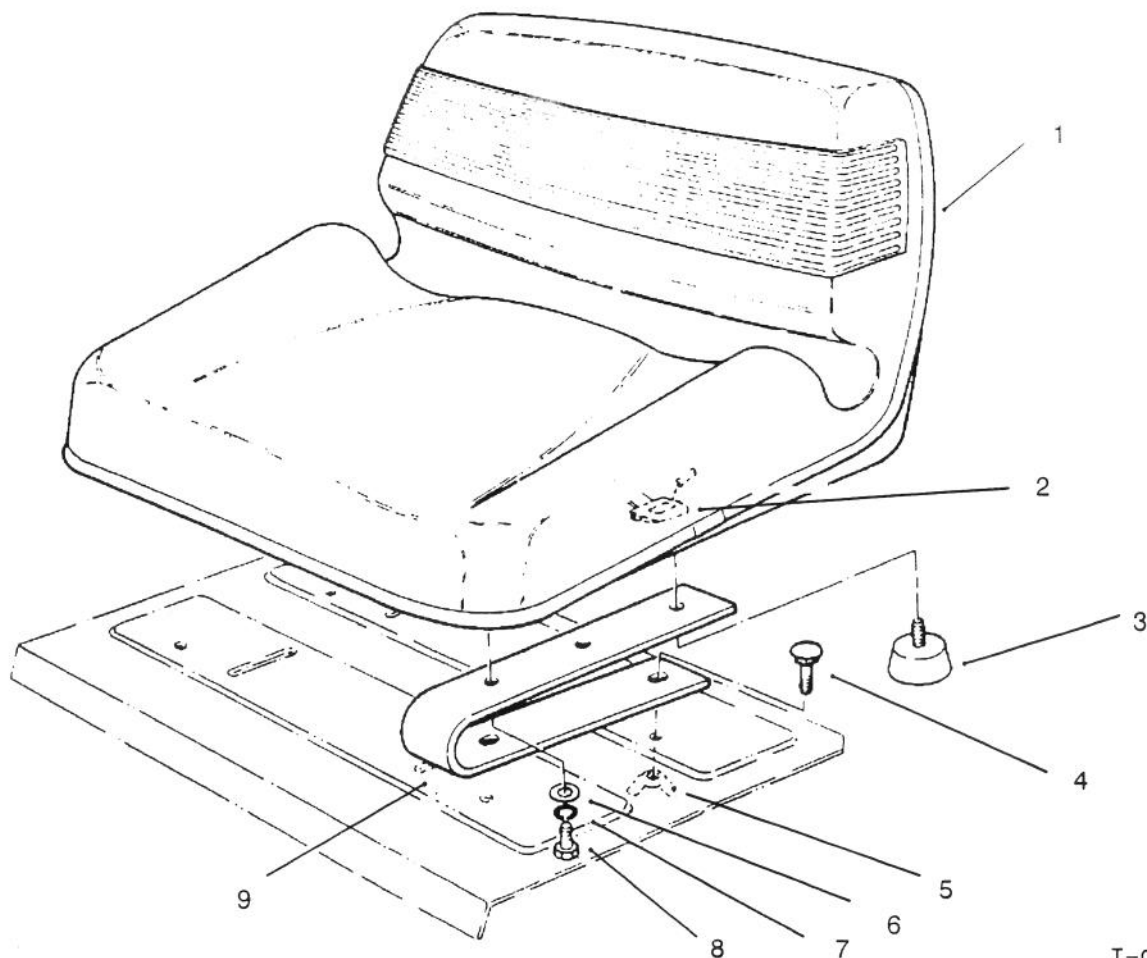


T-0073

SEAT SUPPORT ASSEMBLY

Ref. No.	Part No.	Description	No. Used
1	54-0920	Decal - Parking Brake	2
2	80-3760	Support - Seat, Front	1
3	54-3110	Hinge - Seat	1
4	3296-29	Nut	8
5	3256-23	Washer - Flat	6
6	322-4	Screw	8
7	321-14	Screw	2
8	54-1220	Support - Seat R.H.	1
9	321-23	Screw	2
10	82-4680	Lever - Valve	1
11	233-37	Knob	1
12	92-6281	Plate - Seat	1
13	54-0900	Decal - Lift Control	1
14	56-6590	Screw	1
15	3272-6	Pin - Cotter	1
16	283-17	Pin - Clevis	1
17	353-511	Fitting	2
18	353-545	Fitting	1
19	237-78	"O"Ring	2
20	82-4700	Bracket - Lever, Valve	1
21	3296-42	Nut - Lock	19

Ref. No.	Part No.	Description	No. Used
22	353-375	Fitting - 90°	1
23	54-0090	Valve Assembly	1
24	237-42	"O"Ring	2
25	3356-1	Washer - Flat	10
26	2412-94	"R"Clamp	1
27	54-1700	Chamber - Air	1
28	218-515	Bracket - Mounting	1
29	12-8130	Meter - Hour	1
30	54-1550	Support - Hood	1
31	54-1190	Bracket - Hour Meter	1
32	54-1230	Support - Seat L.H.	1
33	335-8	Washer - Ext. Tooth	1
34	3217-26	Nut	1
35	54-1790	Cover - Chamber	1
36	321-4	Screw	5
37	3296-39	Nut	1
38	2412-120	"R"Clamp	2
39	3256-51	Screw	2
40	32104-76	Screw	2
41	74-0720	Tube - Manual	1
*	82-8640	Wire - Jumper (Hour Meter)	1

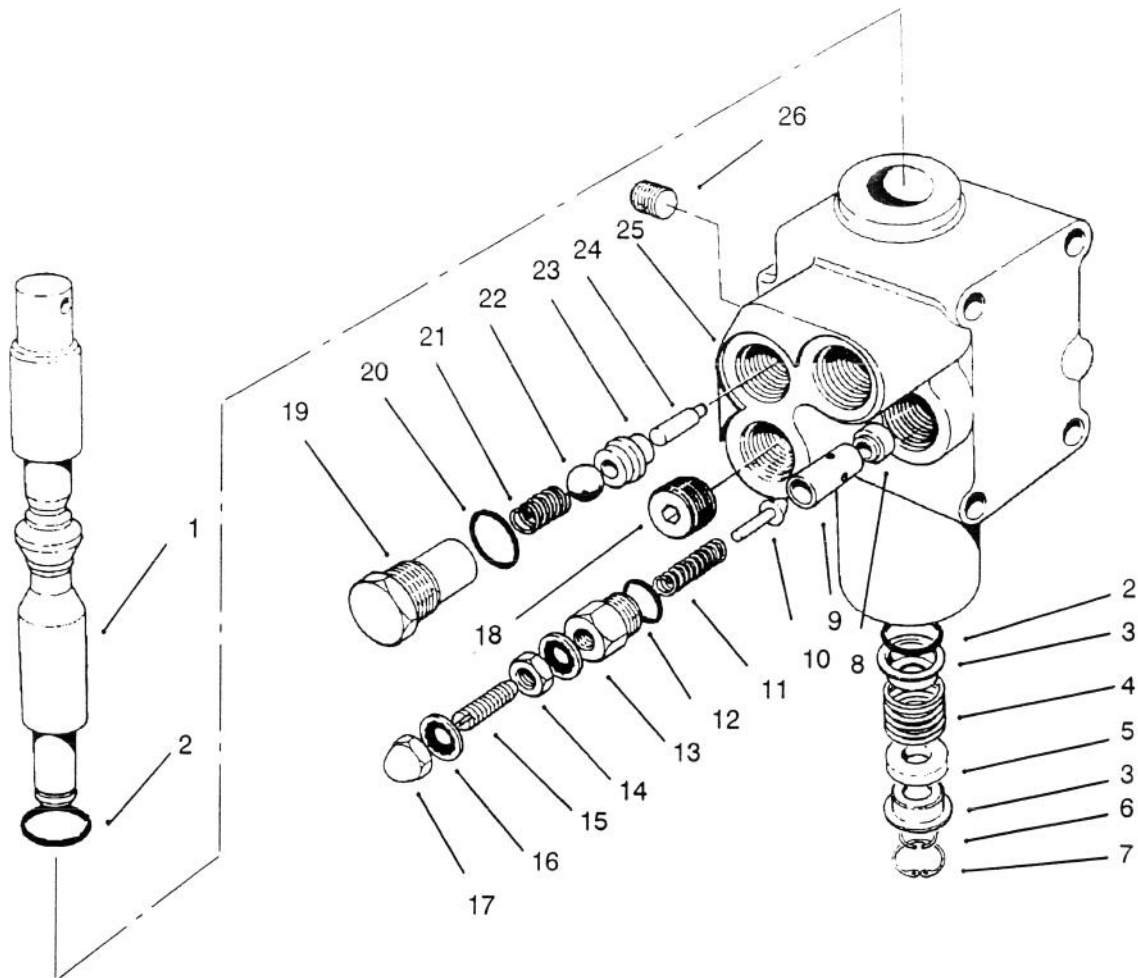


T-0073

SEAT ASSEMBLY

Ref. No.	Part No.	Description	No. Used
1	76-1401	Seat	1
2	38-1420	Switch - Seat	1
3	67-9800	Bumper	2
4	3230-16	Bolt - Carriage	4
5	32103-23	Nut - Wing	4

Ref. No.	Part No.	Description	No. Used
6	3256-23	Washer	4
7	3252-4	Washer - Lock	4
8	322-4	Screw - Hex. Hd.	2
9	68-3280	Spring - Seat	2

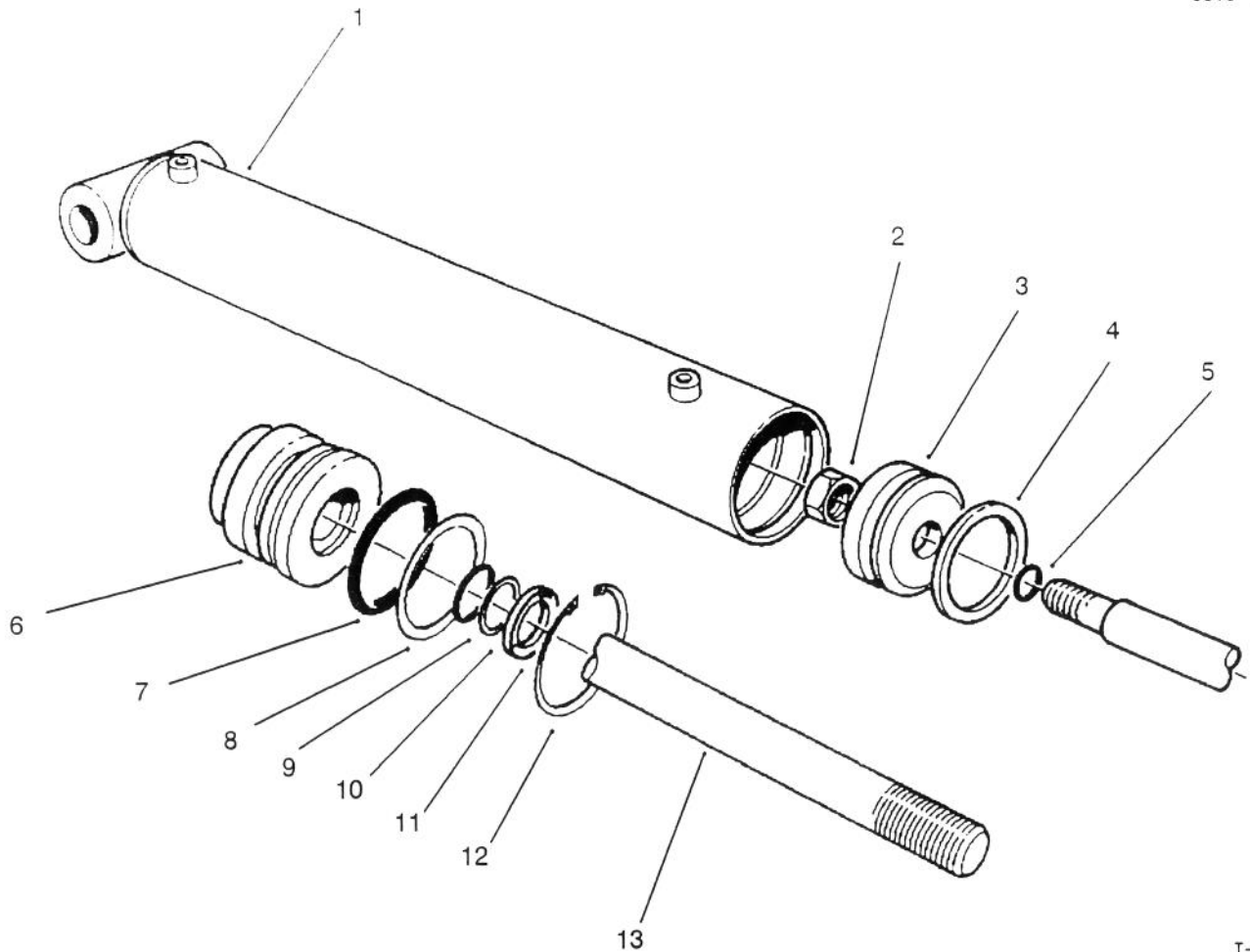


T-0075

VALVE ASSEMBLY NO. 54-0090

Ref. No.	Part No.	Description	No. Used
1	54-0260	Spool	1
2	22-8500	"O"Ring	2
3	22-8380	Retainer - Spring	2
4	22-8410	Spring	1
5	27-5200	Spacer	1
6	22-8480	Ring - Retaining	1
7	22-8490	Ring - Retaining	1
8	55-3640	Seat - Relief	1
9		Guide	1
10		Plunger	1
11		Spring	1
12		"O"Ring	1
13		Cap - PV Adjustment	1
14		Nut	1

Ref. No.	Part No.	Description	No. Used
15		Screw - Set	1
16		Stat O Seal	1
17		Nut - Acorn	1
18	28-1120	Plug	1
19	22-8330	Plug	1
20	237-42	"O"Ring	2
21	22-8340	Spring	1
22	22-8350	Ball	1
23	22-8370	Seat - Check Valve	1
24	22-8360	Pin - Cam	1
25		Body	1
26	55-3650	Plug	1
*	55-3630	Adjustable Relief Valve (Incl. Ref. #9-17)	1

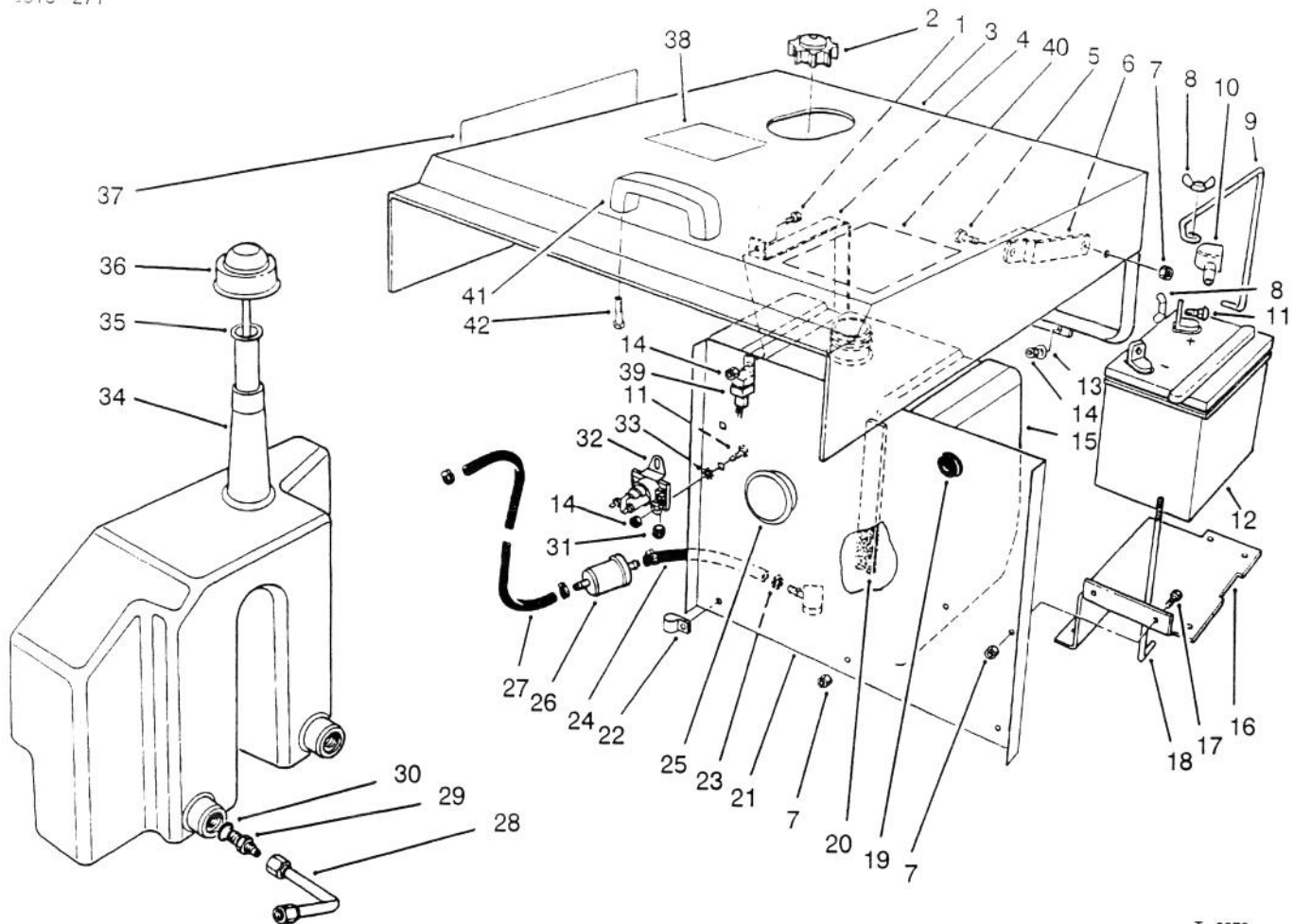


T-0077

HYDRAULIC LIFT CYLINDER NO. 54-0150

Ref. No.	Part No.	Description	No. Used
1†		Barrel	1
2	32152-10	Nut - Lock	1
3	54-0300	Piston	1
4		Uniring	1
5		"O"Ring	1
6	54-0310	Head	1
7		"O"Ring	1
8		Washer - Backup	1

Ref. No.	Part No.	Description	No. Used
9		"O"Ring	1
10		Washer - Backup	1
11		Seal - Dust	1
12	43-5220	Ring - Retaining	1
13	54-0280	Shaft	1
*	54-0290	Seal Repair Kit (Incl. Ref. #4, 5 & 7-11)	1



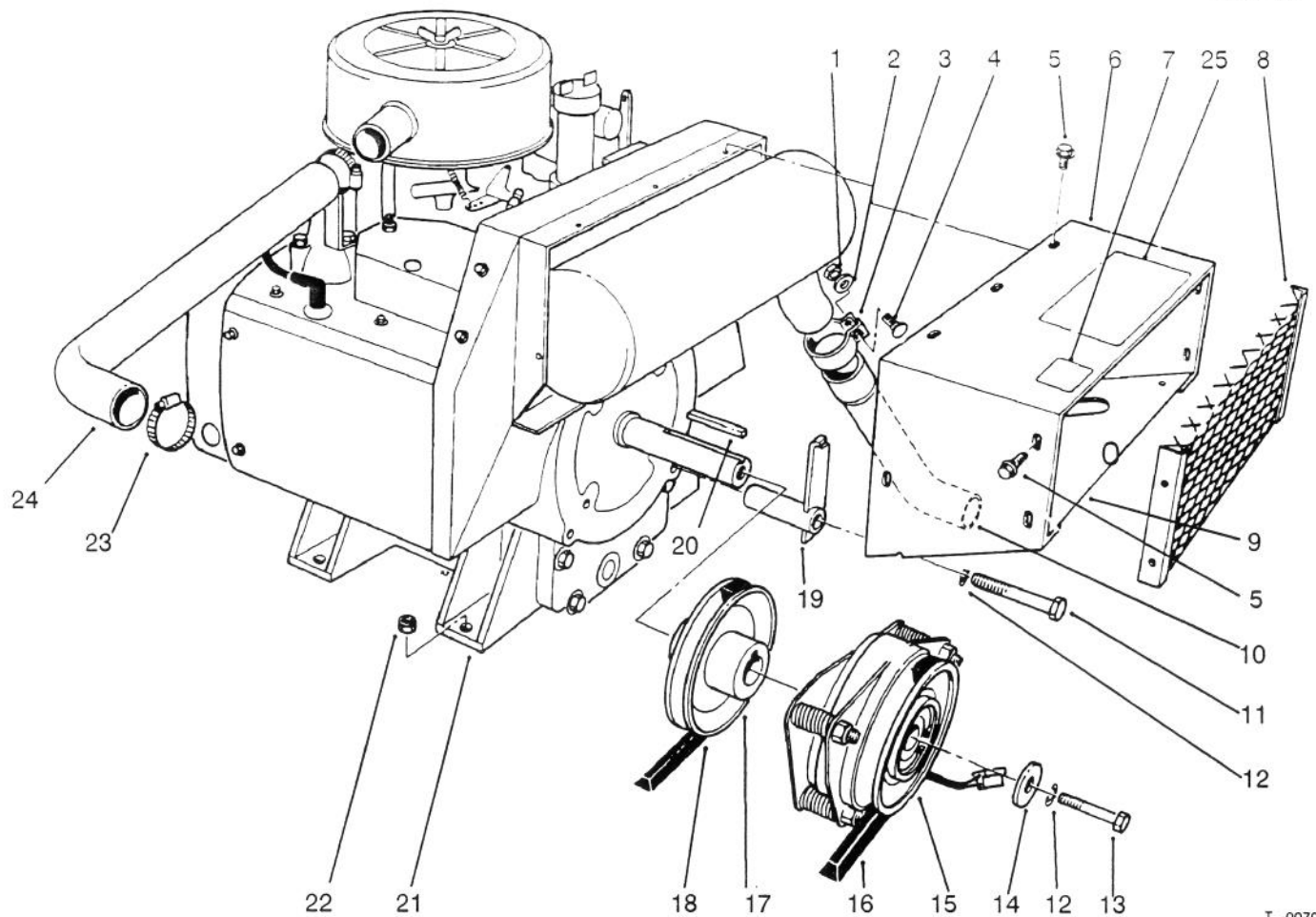
T-0078

HOOD, FUEL TANK & HYDRAULIC RESERVOIR ASSEMBLY

Ref. No.	Part No.	Description	No. Used
1	321-3	Screw - Hex. Hd.	2
2	55-3570	Cap - Fuel	1
3	14-4109	Hood	1
4	54-1880	Strap - Fuel Tank	2
5	322-3	Screw - Hex. Hd.	2
6	54-1860	Stop - Hood Upper	2
7	3296-29	Nut - Hex.	9
8	32103-22	Nut - Wing	3
9	54-1260	Clamp - Battery	1
10	77-0981	Boot - Terminal	1
11	3229-1	Bolt - Carriage	4
12	82-4640	Battery	1
13	3256-1	Washer	4
14	3296-42	Nut - Lock	8
15	62-4040	Tank - Fuel	1
16	54-1850	Support - Battery	1
17	322-4	Screw - Hex. Hd.	2
18	12-5950	Rod - Battery Support	1
19	237-100	Grommet	1
20	54-1890	Foam - Tank	2
21	92-6267	Shield - Heat	1
22	2412-100	"R" Clamp	1

Ref. No.	Part No.	Description	No. Used
23	2412-108	Clamp - Hose	4
24	47-2963	Hose - Fuel	1
25	92-6274	Plug - Cap	1
26	38-8000	Filter - Fuel	1
27	66-1600	Hose - Fuel	1
28	54-2310	Hydraulic Tube Assembly Transmission to Reservoir	1
29	353-385	Fitting - Hydraulic Straight (Incl. Ref. #30)	2
30	237-42	"O" Ring	2
31	3219-4	Nut	1
32	44-9380	Solenoid	1
33	3255-7	Washer - Ext. Tooth	4
34	54-2470	Reservoir - Hydraulic	1
35	29-0590	Screen	1
36	36-4950	Cap - Oil	1
37	74-0890	Decal - ProLine 118	2
38	92-6291	Decal - Refueling	1
39	63-7590	Relay	1
40	72-7820	Decal - Service	1
41	65-5100	Handle	1
42	46-8091	Screw	2

*Not Illustrated

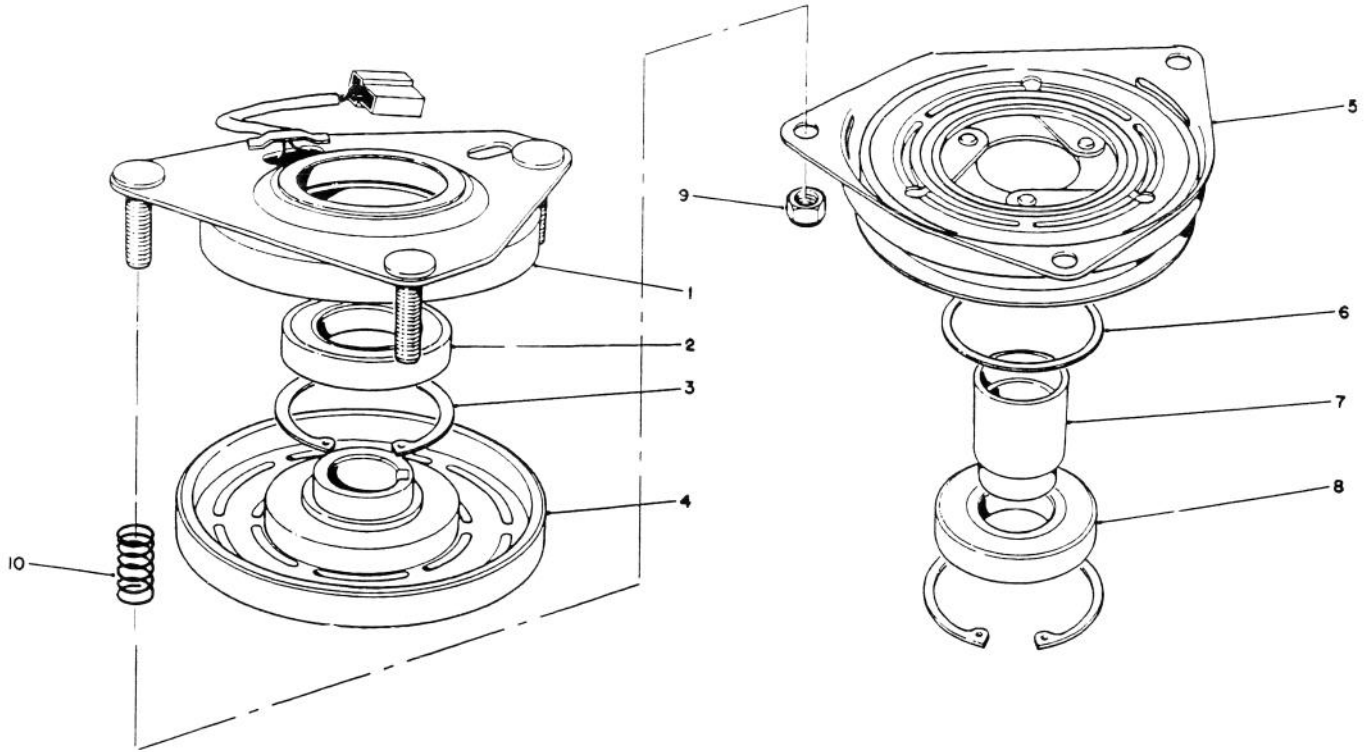


T-0079

ENGINE ASSEMBLY

Ref. No.	Part No.	Description	No. Used
1	3217-6	Nut - Hex.	1
2	3253-4	Washer - Lock	1
3	55-8660	Clamp Assembly (Incl. Ref. #1, 2 & 4)	1
4	3230-3	Bolt - Carriage	1
5	46-8560	Screw - Thread Forming	11
6	54-2480	Duct - Engine	1
7	63-8440	Decal - Hot	1
8	92-1790	Screen	1
9	54-0990	Duct - Bottom	1
10	54-2290	Pipe - Exhaust	1
11	324-11	Screw - Hex. Hd.	1
12	3253-6	Washer - Lock	2
13	3212-24	Screw - Hex. Hd.	1
14	44-8160	Washer - Flat	1

Ref. No.	Part No.	Description	No. Used
15	54-0220	Clutch Assembly	1
16	54-1380	"V"Belt	1
17	54-2330	Pulley - Engine	1
18	54-1390	"V"Belt	1
19	54-2160	Bracket - Anchor	1
20	5-0930	Key - Square	1
21	74-0861	Engine - Kohler Model No. M18QS-24657	1
22	3296-44	Nut - Hex.	3
23	2412-3	Clamp - Hose	2
24	54-1780	Hose - Air Cleaner	1
25	72-7820	Decal - Service	1
26	323-7	Screw	3
27	11-0590	Screw	1
28		Mount - Engine (Ref.)	2

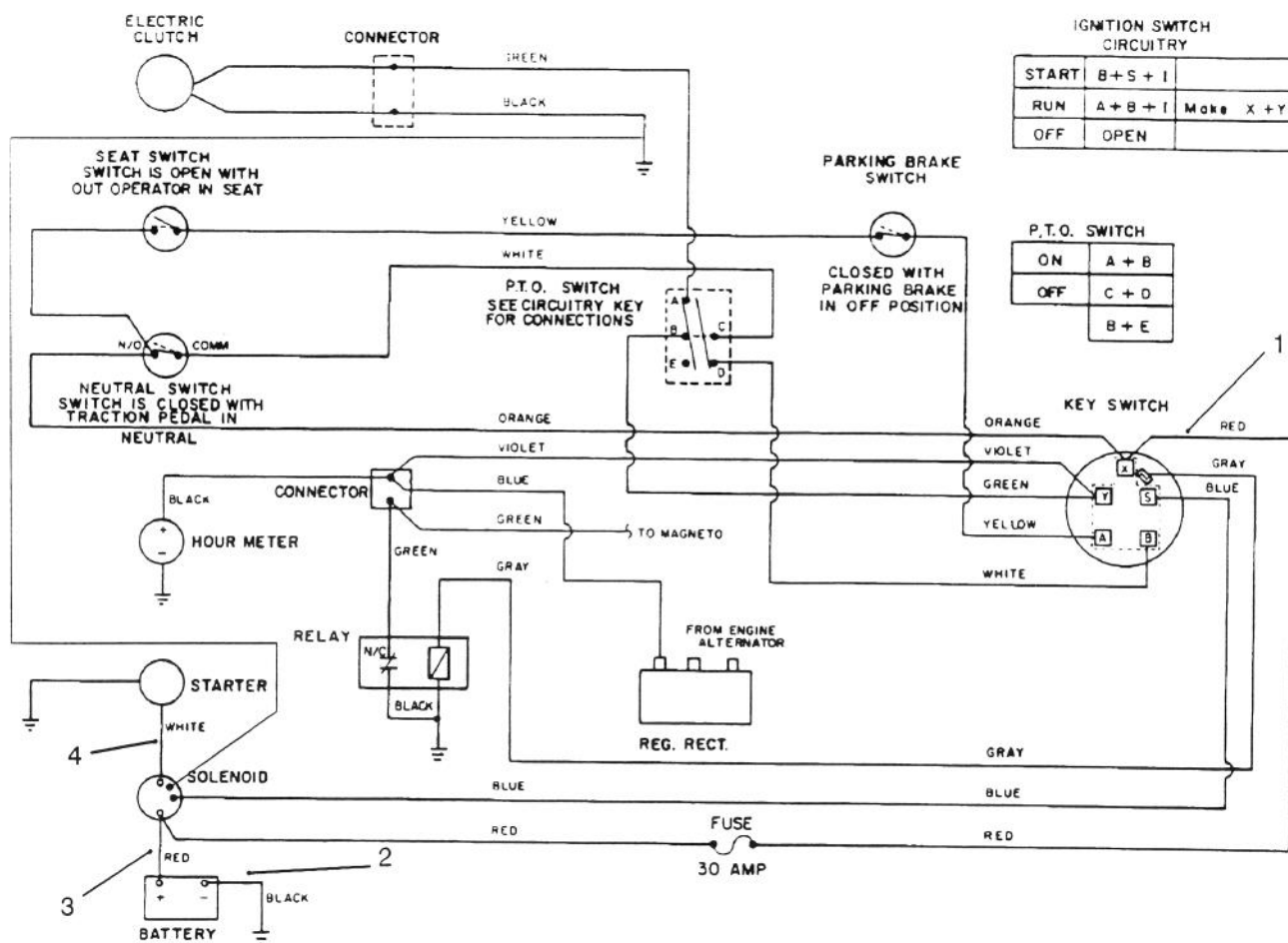


T-0080

CLUTCH ASSEMBLY NO. 54-0220

Ref. No.	Part No.	Description	No. Used
1	54-0230	Field Assembly (Incl. Ref. #2 & 3)	1
2	251-292	Bearing - Field	1
3	44-8310	Ring - Retaining	2
4	44-8360	Field Coil, Rotor & Bearing (Incl. Ref. #1)	1
5	44-8370	Armature & Pulley Assembly (Incl. Ref. #3, 6, 7 & 8)	1

Ref. No.	Part No.	Description	No. Used
6	44-8330	Spacer - Bearing	1
7	44-8340	Collar - Bearing	1
8	251-291	Bearing - Pulley	1
9	3296-6	Nut - Lock	3
10	44-8320	Spring	3



IGNITION SWITCH CIRCUITRY

START	B + S + I	
RUN	A + B + I	Make X + Y
OFF	OPEN	

P.T.O. SWITCH

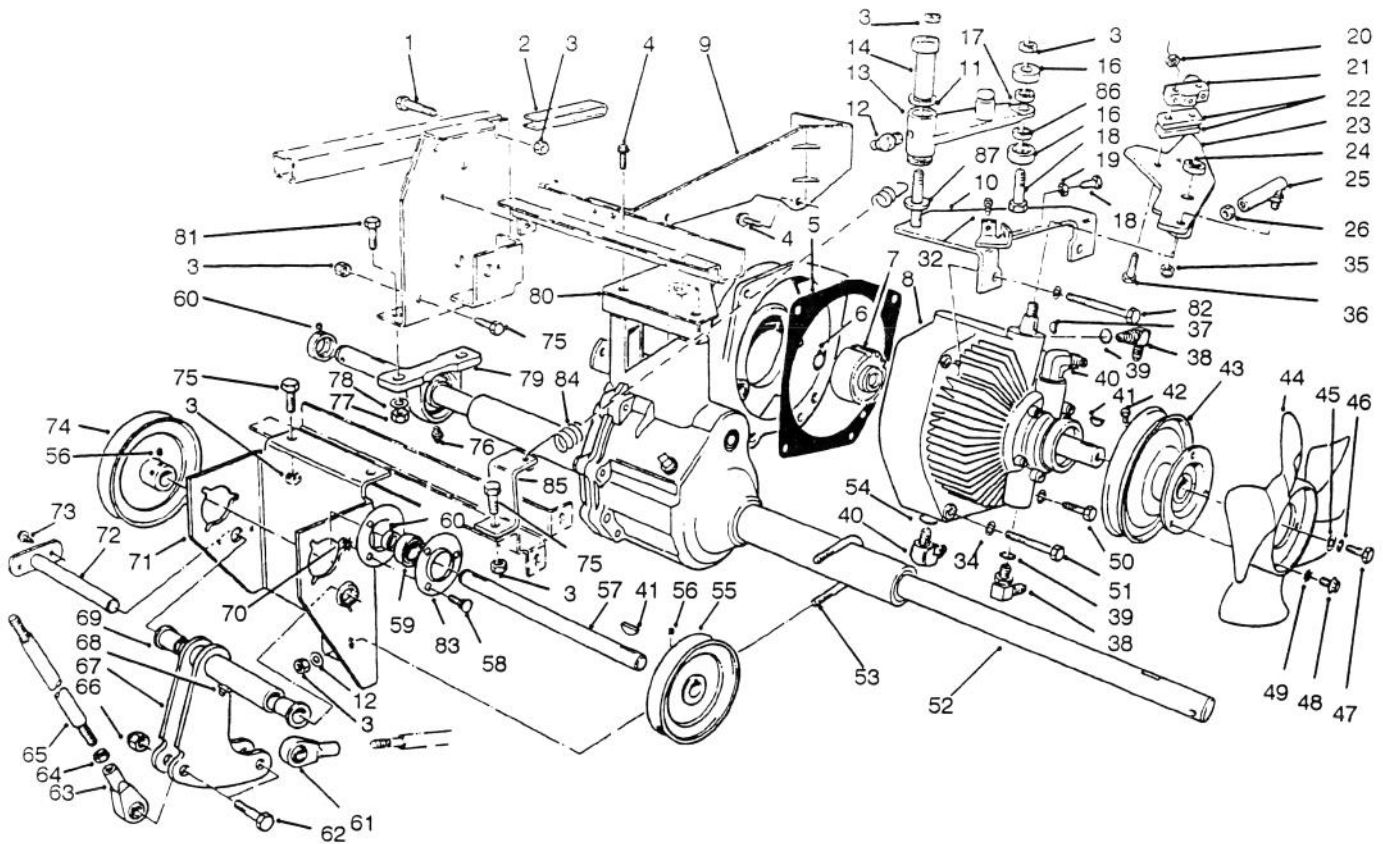
ON	A + B
OFF	C + D
	B + E

C-0511

ELECTRICAL SCHEMATIC

Ref. No.	Part No.	Description	No. Used
1	92-1770	Harness - Wire	1
2	28-3892	Wire Assembly (Ground)	1
3	54-2030	Wire Assembly	1

Ref. No.	Part No.	Description	No. Used
4	54-2031	Wire Assembly	1
5	82-8640	Wire Assembly	1
6	92-6327	Pigtail-PTO Switch Adapter	1



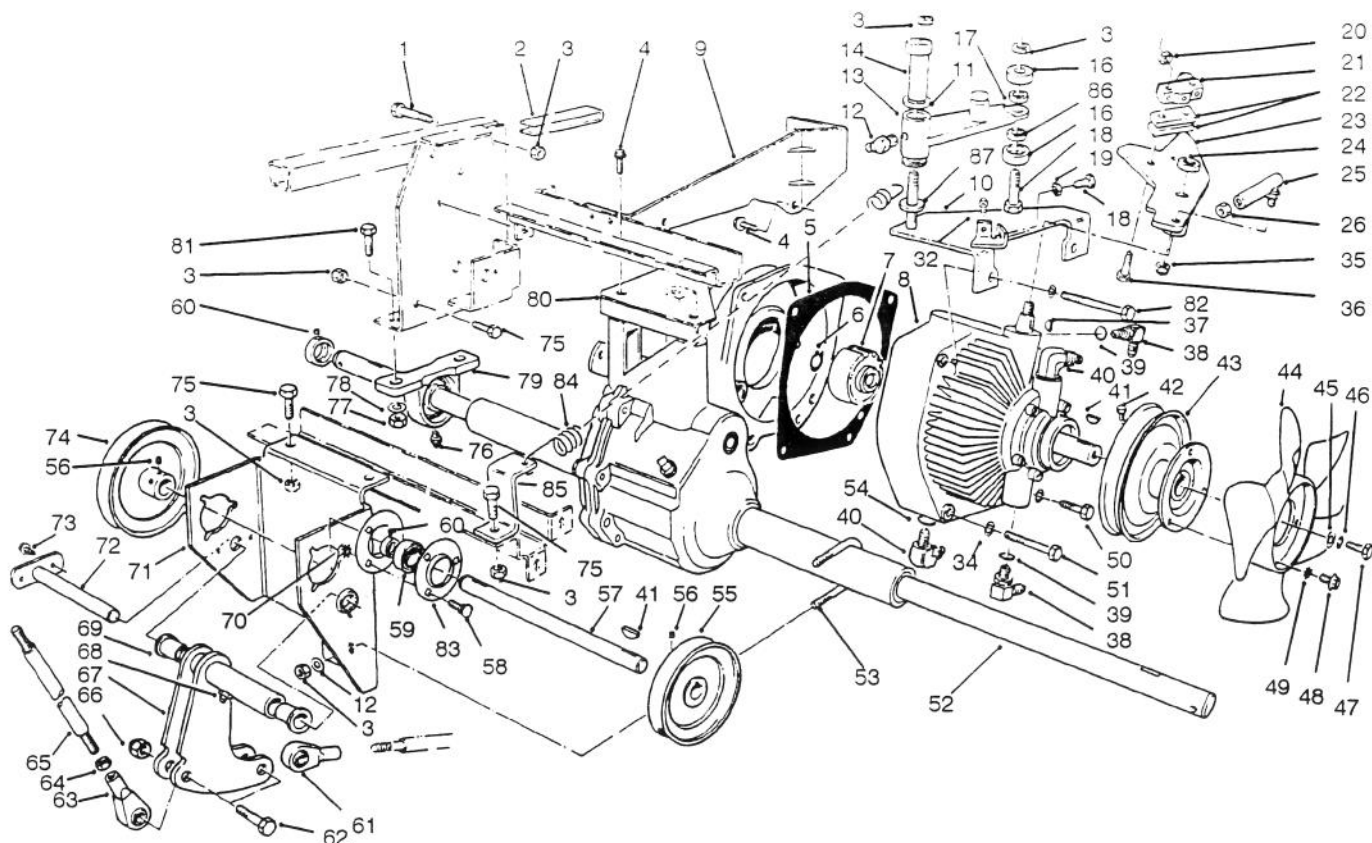
C-1631

TRANSMISSION & DIFFERENTIAL ASSEMBLY

Ref. No.	Part No.	Description	No. Used
1	322-11	Screw - Hex. Hd.	4
2	80-3750	Spacer	2
3	3296-29	Nut - Lock	16
4	3234-1	Screw - Hex. Flange Hd.	5
5	55-4320	Gasket	1
6	32120-64	Ring - Snap	1
7	54-0320	Gear	1
8	54-0080	Transmission - Hydrostatic	1
9	59-1620	Bracket - Transaxle	1
10	92-6270	Plate - Traction	1
11	3-6498	Washer	2
12	302-40	Fitting - Grease 90°	
13	92-6289	Swing Arm Assembly	
*		(Incl. 256-113 Bushings (2))	1
14	76-8640	Stud - Traction	1
16	251-307	Bearing	2
17	75-5470	Spacer Bearing	1
18	322-7	Screw - Hex. Hd.	2
19	3217-6	Nut	4
20	3296-9	Nut	2
21	29-6163	Switch	1
22	75-4130	Spacer	2

Ref. No.	Part No.	Description	No. Used
23	92-6269	Lever - Traction	2
24	3296-25	Nut	1
25	2411-34	Joint - Ball	1
26	3220-1	Nut - Hex. Jam	1
32	322-6	Screw - Hex. Hd.	1
35	3296-3	Nut - Lock	1
36	3250-46	Screw	2
37	3257-24	Key - Woodruff	1
38	353-511	Fitting - Hydraulic 90°	
		(Incl. Ref. #39)	2
39	237-79	"O"Ring	2
40	353-370	Fitting - Hydraulic 90°	
		(Incl. Ref. #54)	2
41	3257-5	Key - Woodruff	3
42	3241-2	Screw - Set	2
43	54-0930	Pulley - Transmission	1
44	54-0240	Fan	1
45	3256-55	Washer	1
46	3253-3	Washer - Lock	1
47	321-2	Screw - Hex. Hd.	1
48	32144-19	Screw - Round Hd.	3

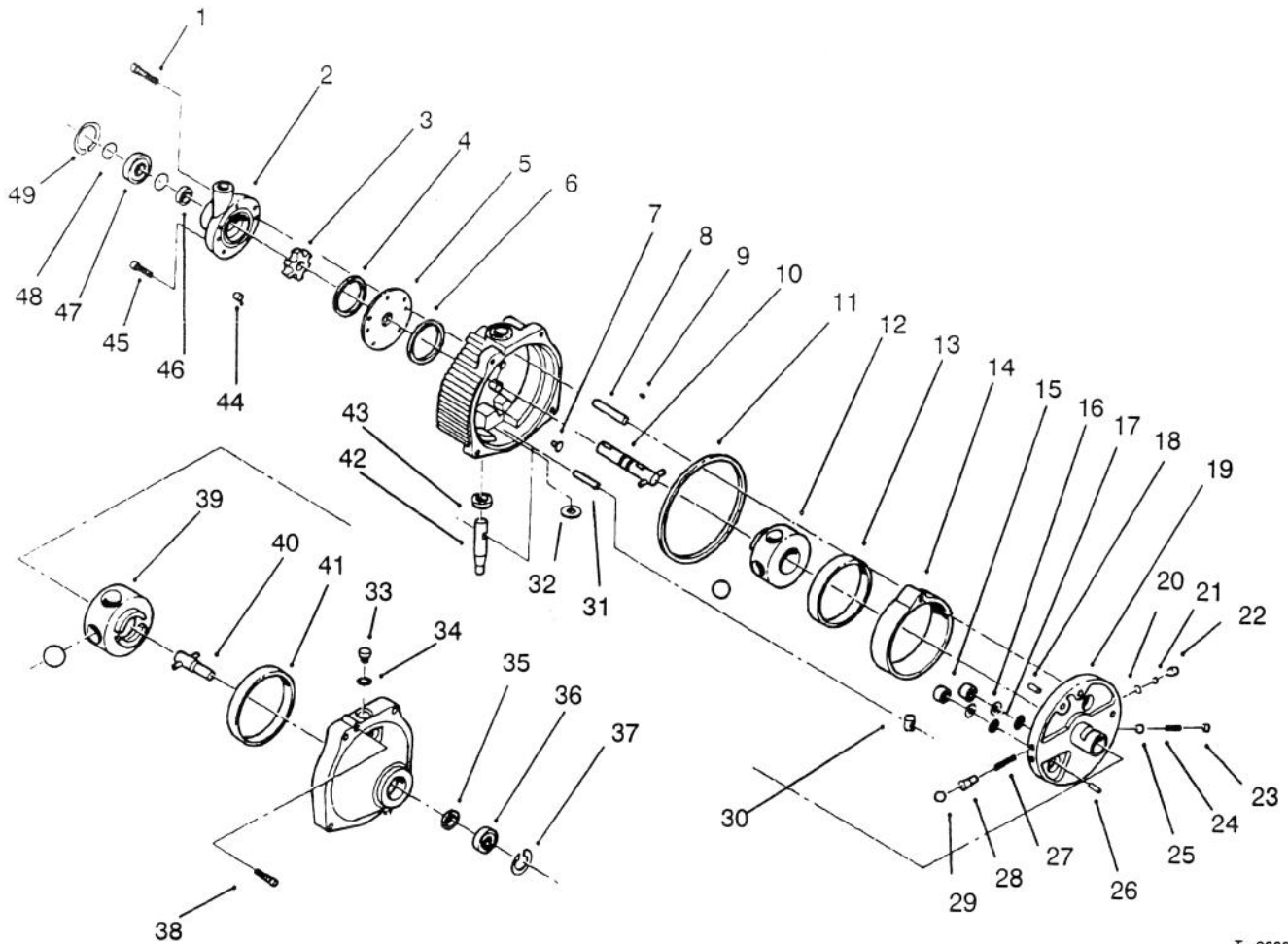
*Not Illustrated



C-1631

TRANSMISSION & DIFFERENTIAL ASSEMBLY (Continued)

Ref. No.	Part No.	Description	No. Used	Ref. No.	Part No.	Description	No. Used
49	3255-5	Washer - Lock	3	68	302-49	Fitting - Grease	1
50	323-13	Screw - Hex. Hd.	1	69	46-6680	Bushing - Flanged	2
51	323-16	Screw - Hex. Hd.	1	70	32149-1	Nut - Lock	6
52	13-5969	Differential Assembly	1	71	60-9130	Bracket - Jackshaft	1
53	54-8970	"U" Bolt	1	72	59-1470	Shaft - Bellcrank	1
54	237-80	"O" Ring	2	73	46-8560	Screw - Thread Forming	2
55	54-2380	Pulley - Input	1	74	54-2390	Pulley - Output	1
56	3241-1	Screw - Set	4	75	322-4	Screw - Hex. Hd.	6
57	54-1600	Jackshaft	1	76	302-2	Fitting - Grease	2
58	3230-1	Bolt - Carriage	6	77	33296-44	Nut - Lock	4
59	251-288	Bearing w/Collar	2	78	3256-3	Washer - Flat	4
60	3245-35	Screw - Set	4	79	72-4060	Bearing Assembly	2
61	251-304	Rod End	1	80	60-8990	Plate - Transaxle	1
62	324-7	Screw - Hex. Hd.	2	81	323-8	Screw - Hex. Hd.	4
63	251-305	Rod End	1	82	323-14	Screw - Hex. Hd.	2
64	3220-4	Nut - Hex. Jam	2	83	251-341	Flange - Bearing	4
65	54-1490	Rod - Steering	1	84	76-9430	Spring - Extension	1
66	32152-9	Nut - Lock	2	85	92-6273	Bracket - Spring	1
67	54-2060	Bellcrank Assembly (Incl. Ref. #68 & 69)	1	86	92-6290	Spacer	1
				87	3256-68	Washer	2

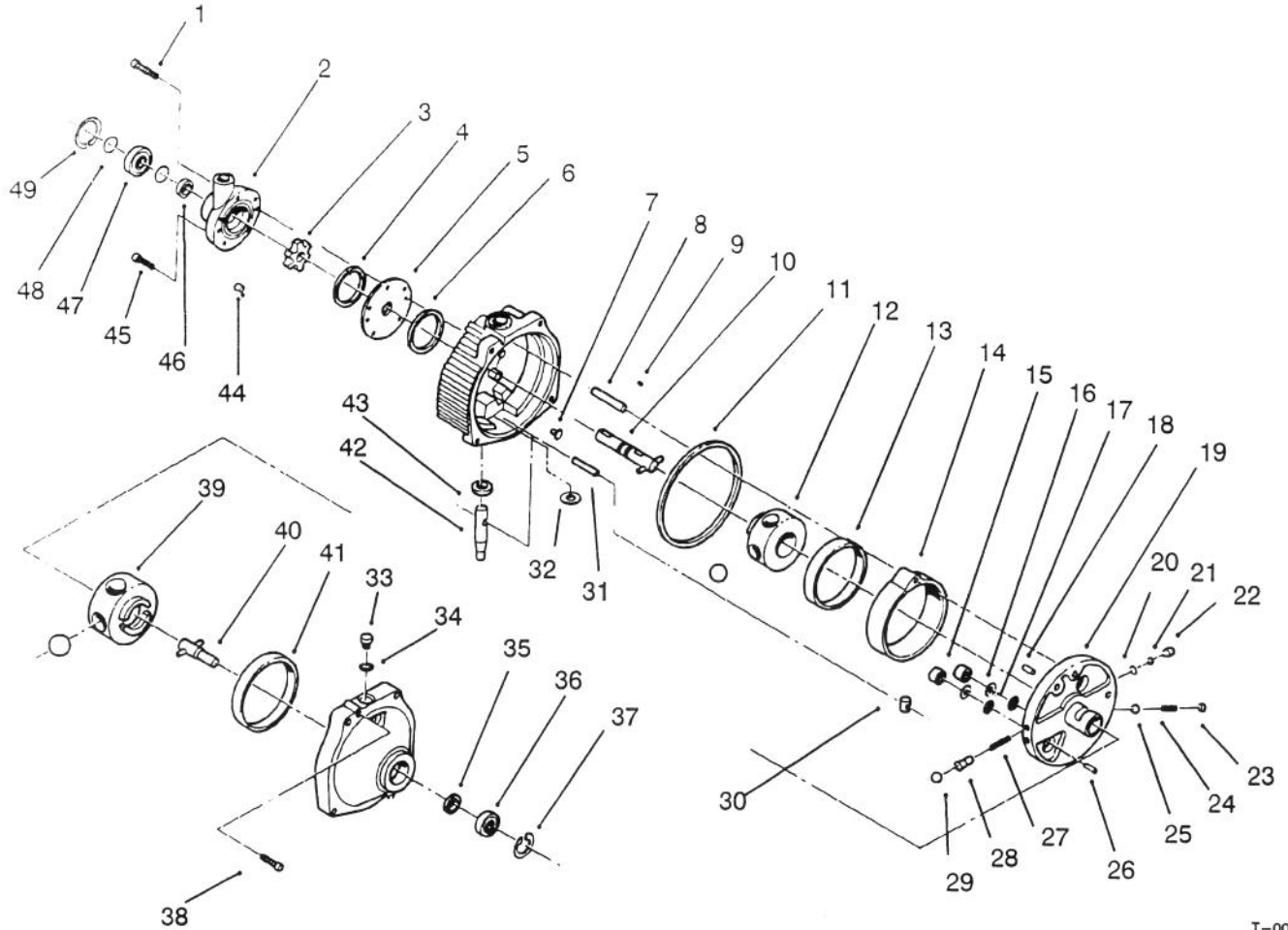


T-0883

HYDROSTATIC TRANSMISSION ASSEMBLY

Ref. No.	Part No.	Description	No. Used
1	56-2800	Screw - Hex. Socket Hd.	1
2	56-2830	Charge Pump Assembly (Incl. Ref. #1)	1
3	56-3120	Carrier	1
4	56-2850	Ring - Seal	1
5	56-2860	Plate - Pump	1
6	56-2870	Ring - Seal	1
7	56-2880	Button	2
8	NA	Pin - Dowel	1
9	56-2900	Pin - Drive	1
10	56-2910	Input Shaft Assembly	1
11	56-2920	Ring - Seal	1
12	56-2930	Pump Rotor & Ball Assembly	1
13		Race - Pump	1
14	56-2940	Cam Ring Assembly (Incl. Ref. #13)	1
15	56-2950	Piston	2
16	56-2960	Ring - Backup	2

Ref. No.	Part No.	Description	No. Used
17	56-2970	"O"Ring	2
18	56-2980	Pin - Coil	1
19	56-2990	Pintle Assembly (Incl. Ref. #15-18, 20, 22-26 & 27-29)	1
20	56-3000	Ring - Retaining	2
21	56-3010	Ball	2
22	56-3020	Body - Check Valve	2
23	56-3050	Plug - Relief Valve	1
24	56-3040	Spring - Relief Valve	1
25	56-3030	Ball	1
26	56-3060	Pin - Dowel	1
27	56-3180	Spring - Valve	2
28	56-3200	Body - Valve	2
29	56-3210	Ball	2
30	56-3170	Insert - Cam Ring	1
31		Dowel	1
32		Washer - Control Shaft	1



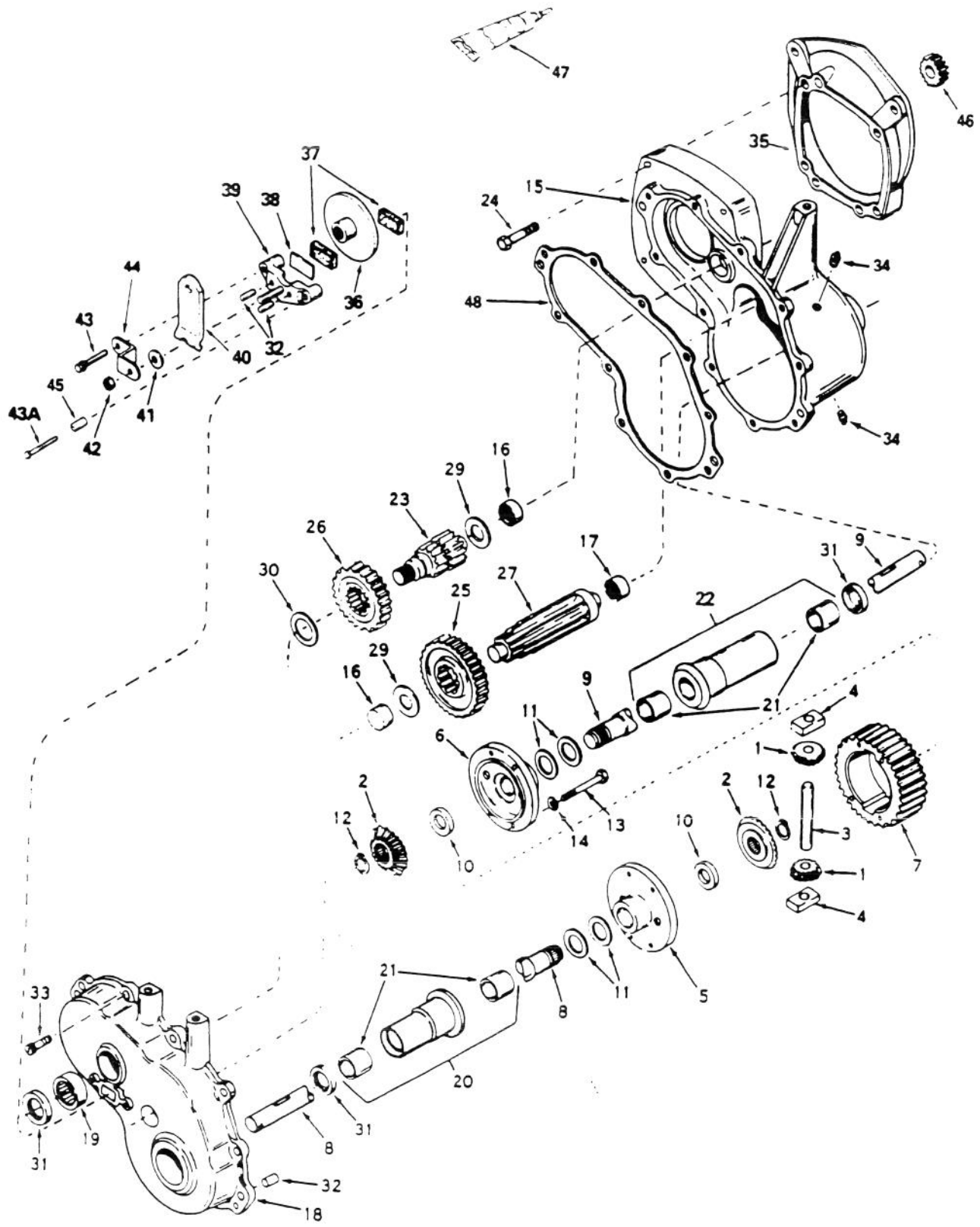
T-0083

HYDROSTATIC TRANSMISSION ASSEMBLY (Continued)

Ref. No.	Part No.	Description	No. Used
33	56-3250	Plug Assembly (Incl. Ref. #34)	1
34	56-3260	"O"Ring	1
35	56-3270	Seal - Oil	1
36	56-3280	Bearing - Output	1
37	56-3290	Ring - Retaining	1
38	56-3300	Screw - Hex. Socket Hd.	2
39	56-3220	Motor Rotor & Ball Assembly	1
40	56-3230	Output Shaft Assembly	1
41	56-3240	Race - Motor	1
42	56-3140	Control Shaft Kit	

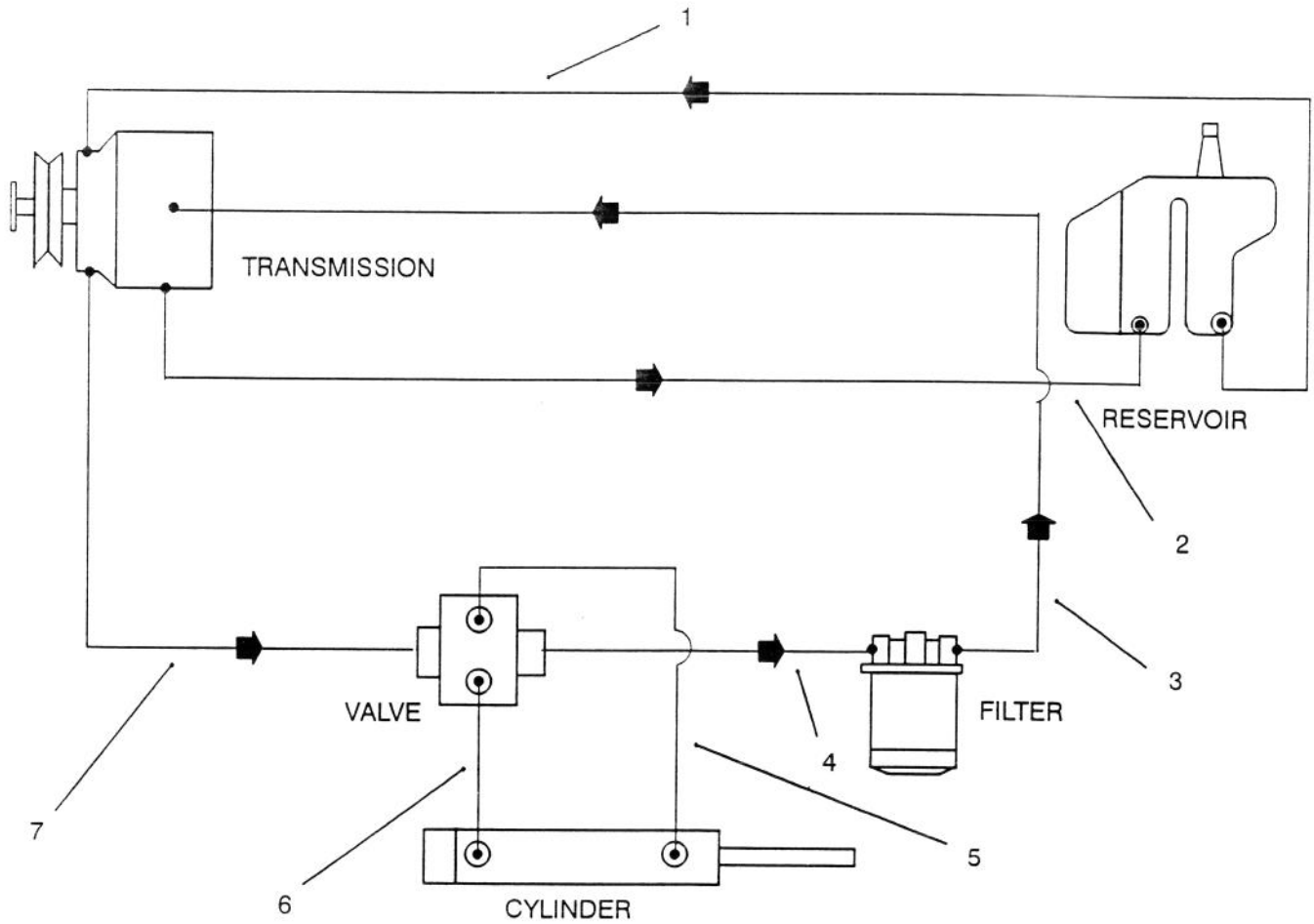
Ref. No.	Part No.	Description	No. Used
		(Incl. Ref. #31 & 32)	1
43	56-3130	Seal - Oil	1
44	56-3110	Pin - Roll	6
45	56-3100	Screw - Hex. Socket Hd.	4
46	56-2820	Seal - Oil	1
47	56-2810	Bearing - Input	1
48	56-3090	Ring - Retaining	2
49	56-3080	Ring - Retaining	1
*	56-3310	Kit - Overhaul Seal (Incl. Ref. #4, 6, 11, 16, 17, 34, 35, 43 & 46)	1

DIFFERENTIAL ASSEMBLY NO. 1310-001A



DIFFERENTIAL ASSEMBLY NO. 1310-001A

Ref. No.	Part No.	Description	No. Used	Ref. No.	Part No.	Description	No. Used
1	778197	Pinion - Bevel	1	23	776245	Shaft - Brake	1
2	778198	Gear - Bevel	1	24	79-2120	Screw-Hex. Hd.	1
3	786019	Pin - Drive	1	25	778036	Gear - Output	1
4	786027	Block - Drive	1	26	778037	Gear - Idler	1
5	774028A	Carrier - Differential	1	27	776244	Shaft - Output	1
6	774029A	Carrier - Differential	1	29	780001	Washer	1
7	778033A	Gear - Ring	1	30	780090	Washer	1
8	774607	Axle - 16-5/8"	1	31	788008	Seal - Oil	1
9	774608	Axle - 21-57/64"	1	32	786026	Pin - Dowel	1
10	780107	Washer	1	33	792046	Screw - Thread Forming	1
11	780042	Washer - Thrust	1	34	792010	Plug - Pipe	1
12	792018	Ring - Snap	1	35	786112	Plate - Adapter	1
13	792020	Screw - Hex. Hd.	1	36	790027	Disc - Brake	1
14	792006	Washer - Lock	1	37	790006	Pad - Brake	1
15	770080	Case Assembly (Incl. Ref. #16 & 17)	1	38	790007	Plate - Brake Pad	1
16	780013	Bearing - Needle	1	39	790025	Holder - Brake Pad	1
17	780088	Bearing - Needle	1	40	790010	Lever - Brake	1
18	772085	Cover Assembly (Incl. Ref. #16 & 19)	1	41	792076	Washer - Flat	1
19	780089	Bearing 0 Needle	1	42	792075	Nut - Lock	1
20	782041A	Housing Assembly - 6-5/8" (Incl. Ref. #21)	1	43	792073	Screw - Thread Forming	1
21	780054	Bushing	1	43A	792085	Screw - Thread Forming	1
22	782042A	Housing Assembly - 8-5/8" (Incl. Ref. #21)	1	44	786086	Bracket	1
				45	786066	Spacer	1
				46	778194	Gear - Spur 22T	1
				47	510334	Gasket Eliminator	1
				48	788044	Gasket	1

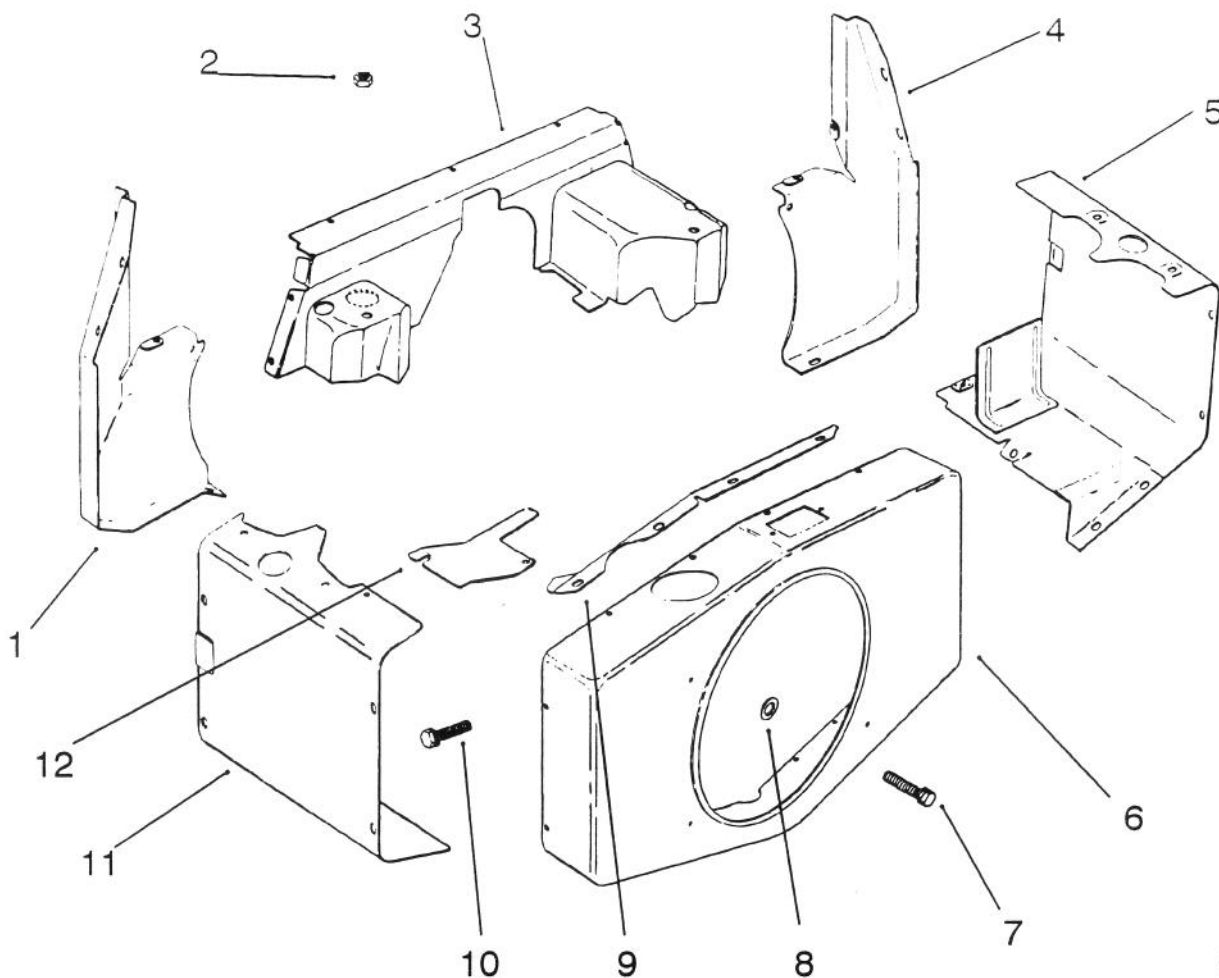


T-0084

HYDRAULIC SCHEMATIC

Ref. No.	Part No.	Description	No. Used
1	56-3390	Hydraulic Hose Assembly Reservoir to Transmission	1
2	54-2310	Hydraulic Tube Assembly	1
3	54-2580	Hydraulic Hose Assembly Filter to Transmission	1
4	54-2570	Hydraulic Hose Assembly Valve to Filter	1

Ref. No.	Part No.	Description	No. Used
5	54-2610	Hydraulic Hose Assembly Cylinder to Valve	1
6	54-2620	Hydraulic Hose Assembly Cylinder to Valve	1
7	54-2590	Hydraulic Hose Assembly Transmission to Valve	1

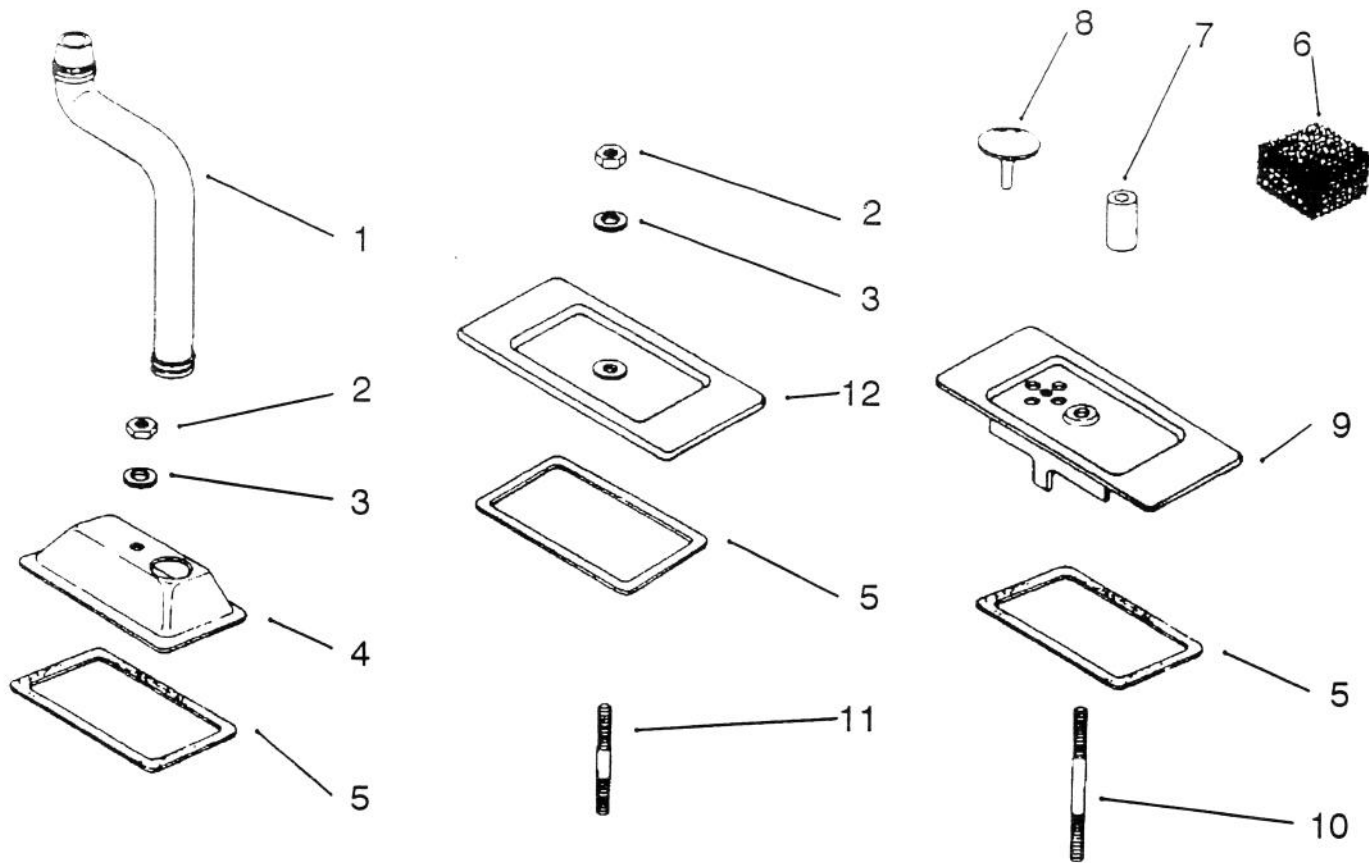


C-1708

BAFFLES & SHROUD

Ref. No.	Part No.	Description	No. Used
1	52 281 21	Duct - #1 Side Air	1
2	X-82-2	Nut	2
3	52 282 01	Cover - Air Duct	1
4	52 281 09	Duct - #2 Side Air	1
5	52 063 33	Baffle - #1 Cylinder Head	1
6	52 755 71	Kit - Blower Housing (Incl. Ref. #7, 8 & 12)	1

Ref. No.	Part No.	Description	No. Used
7	52 086 11	Screw - Self Tapping	2
8	52 468 16	Washer - Flat	2
9	X-67-83	Screw - Hex. Washer Hd.	32
10	52 063 21	Baffle - #2 Cylinder Head	1
11	52 063 01	Baffle - #2 Cylinder Top	1
12	52 217 01	Support - Upper Housing	1

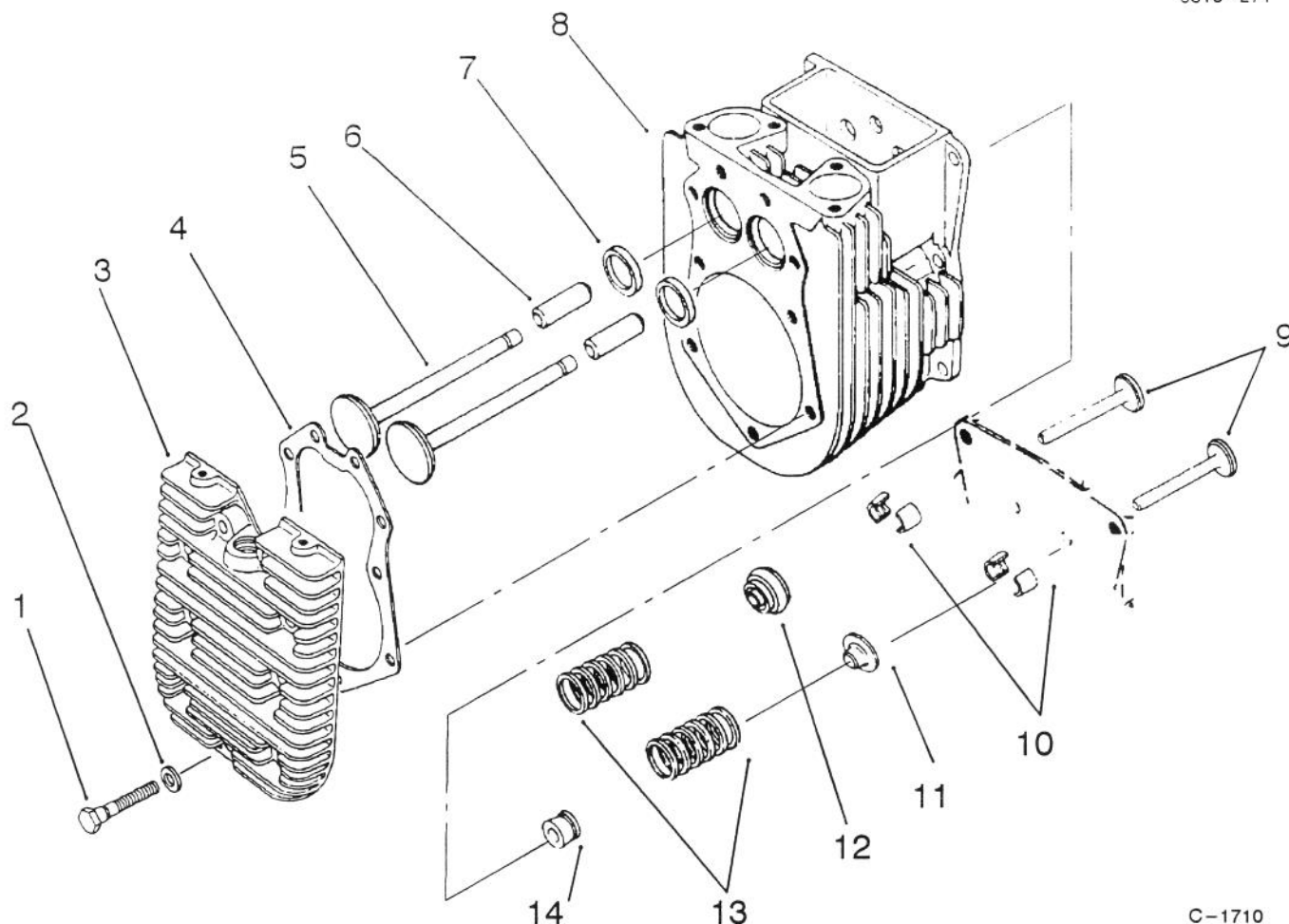


C-1709

BREATHER & VENT

Ref. No.	Part No.	Description	No. Used
1	52 326 05	Hose - Breather	1
2	X-81-1	Nut - Hex.	2
3	X-25-12	Washer - Plain	2
4	52 096 08	Cover - #1 Upper Cyl. Valve	1
5	52 055 01	Gasket - Cover	3
6	231419	Filter - Breather	1

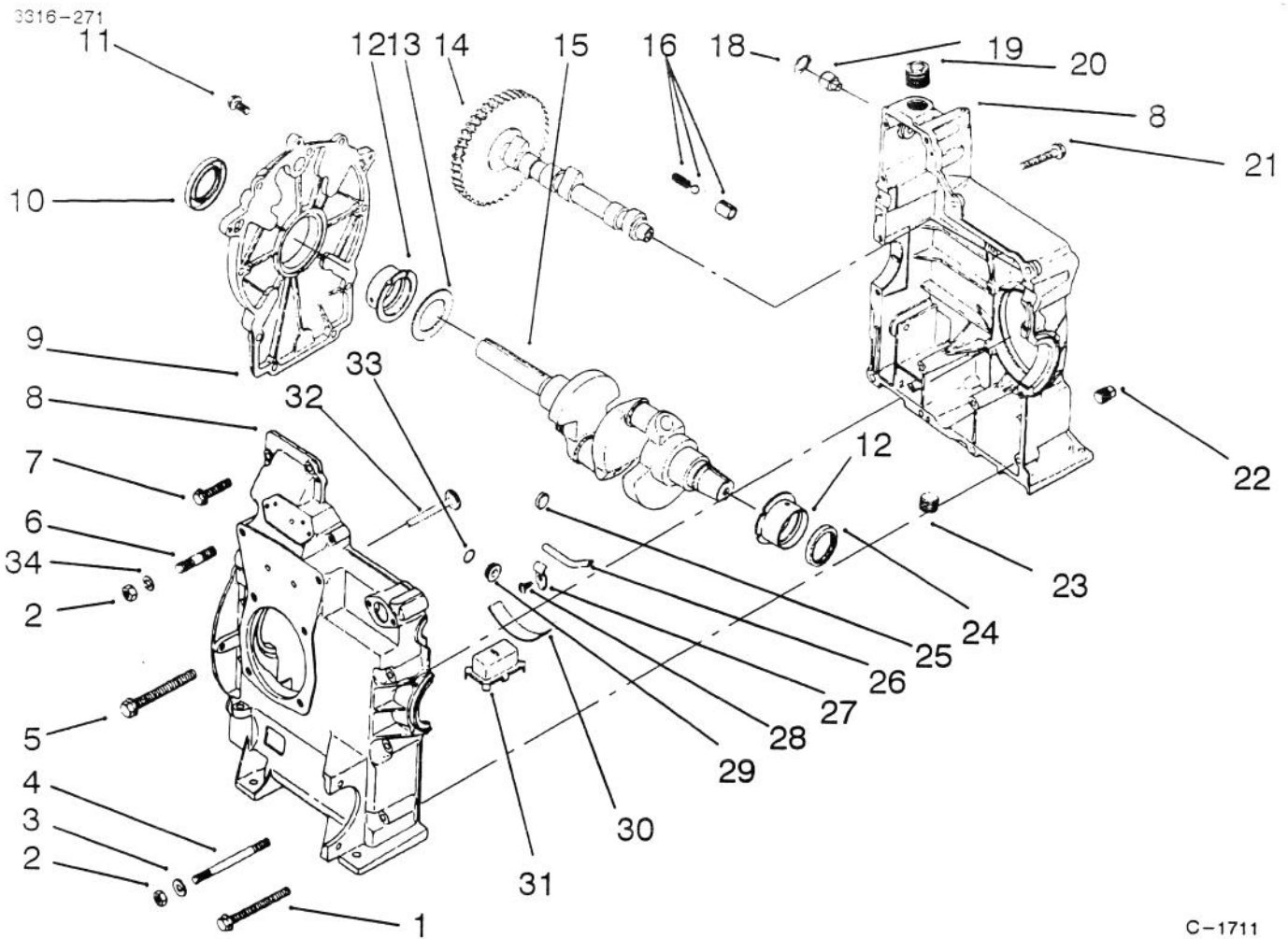
Ref. No.	Part No.	Description	No. Used
7	52 032 04	Seal - Breather	1
8	52 462 01	Valve - Breather	1
9	52 096 22	Cover - #1 Lower Cyl. Valve	1
10	275220	Stud - #1 Cyl. Valve Cover	1
11	X-352-39	Stud - #2 Cyl Valve Cover	1
12	52 096 18	Cover - #2 Cylinder Valve	1



C-1710

CYLINDER BARREL, HEADS AND VALVES

Ref. No.	Part No.	Description	No. Used	Ref. No.	Part No.	Description	No. Used
1	41 086 02	Screw - Hex. Hd.	18	*	82 755 16	Kit - #1 Cylinder Barrel (Incl. Ref. #2-4)	1
2	220534	Washer - Plain	18	9	52 019 03	Tappet	4
3	52 015 08	Head - Cylinder	2	10	41 755 10	Kit - Retainer	4
4	52 041 18	Gasket - Head	2	11	230011	Retainer - Intake Valve	2
5	52 016 05	Valve - Exhaust	1	12	52 413 01	Rotator - Exhaust Valve	2
*	52 017 08	Valve - Intake	1	13	25 098 01	Spring - Valve	4
6	52 316 06	Guide - Valve	2	14	52 032 13	Seal - Intake Valve Stem	2
7	52 031 01	Insert - Valve Seat	2				
8	82 755 17	Kit - #2 Cylinder Barrel (Incl. Ref. #2-4)	1				

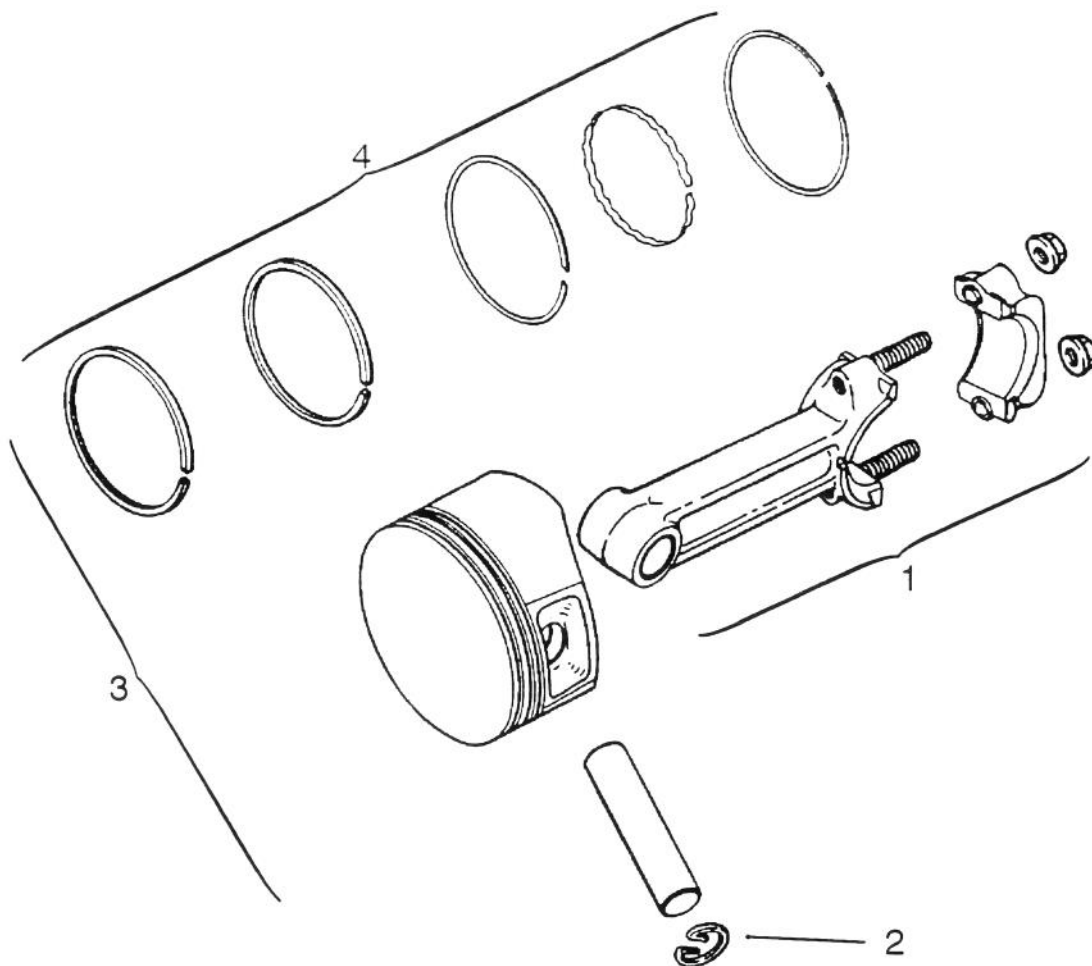


C-1711

CRANKCASE

Ref. No.	Part No.	Description	No. Used
1	25 086 11	Screw - Hex. Flange Hd.	6
2	X-82-2	Nut - Hex.	16
3	41 468 01	Washer - Plain	4
4	X-352-33	Stud	2
5	25 086 13	Screw - Hex. Flange Hd.	2
6	52 072 12	Stud - Step	12
7	25 086 10	Screw - Hex. Flange Hd.	3
8		Crankcase (Service With Shortblock	
9	52 755 57	Kit - Closure Plate (Incl. Ref. #10)	1
10	X-583-5	Seal - Rear Oil	1
11	X-802-9	Screw - Hex. Washer - Hd.	9
12	52 030 12	Bearing - Sleeve .020"	2
*	52 030 11	Bearing - Sleeve .010"	2
*	52 030 10	Bearing - Sleeve Std.	2
13	52 468 03	Washer - Thrust	A/R
*	52 468 04	Washer - Thrust	1
*	52 468 05	Washer - Thrust	A/R
14	52 012 09	Camshaft	1

Ref. No.	Part No.	Description	No. Used
15	52 014 64	Crankshaft	1
16	52 755 50	Kit - Oil Relief	1
18	X-269-43	Ring - Retaining	1
19	52 078 05	Shaft - Governor	1
20	X-75-23	Plug - Hex. Socket	1
21	25 086 12	Screw - Hex. Flange Hd.	2
22	X-75-10	Plug - Square Hd.	1
23	X-75-32	Plug - Hex. Socket	2
24	52 032 10	Seal - Front Oil	1
25	X-702-15	Plug - Cup	1
26	52 123 10	Tube - Oil Pickup	1
27	52 237 05	Clamp - Tube	1
28	X-67-64	Screw - Hex. Washer Hd.	1
29	52 139 08	Plug	1
30	52 237 02	Clip - Spring	1
31	52 095 03	Housing - Oil Pickup	1
32	52 019 03	Tappet (Ref.)	4
33	52 141 02	Seal - O-Ring	1
34	52 468 12	Washer - Flat	12

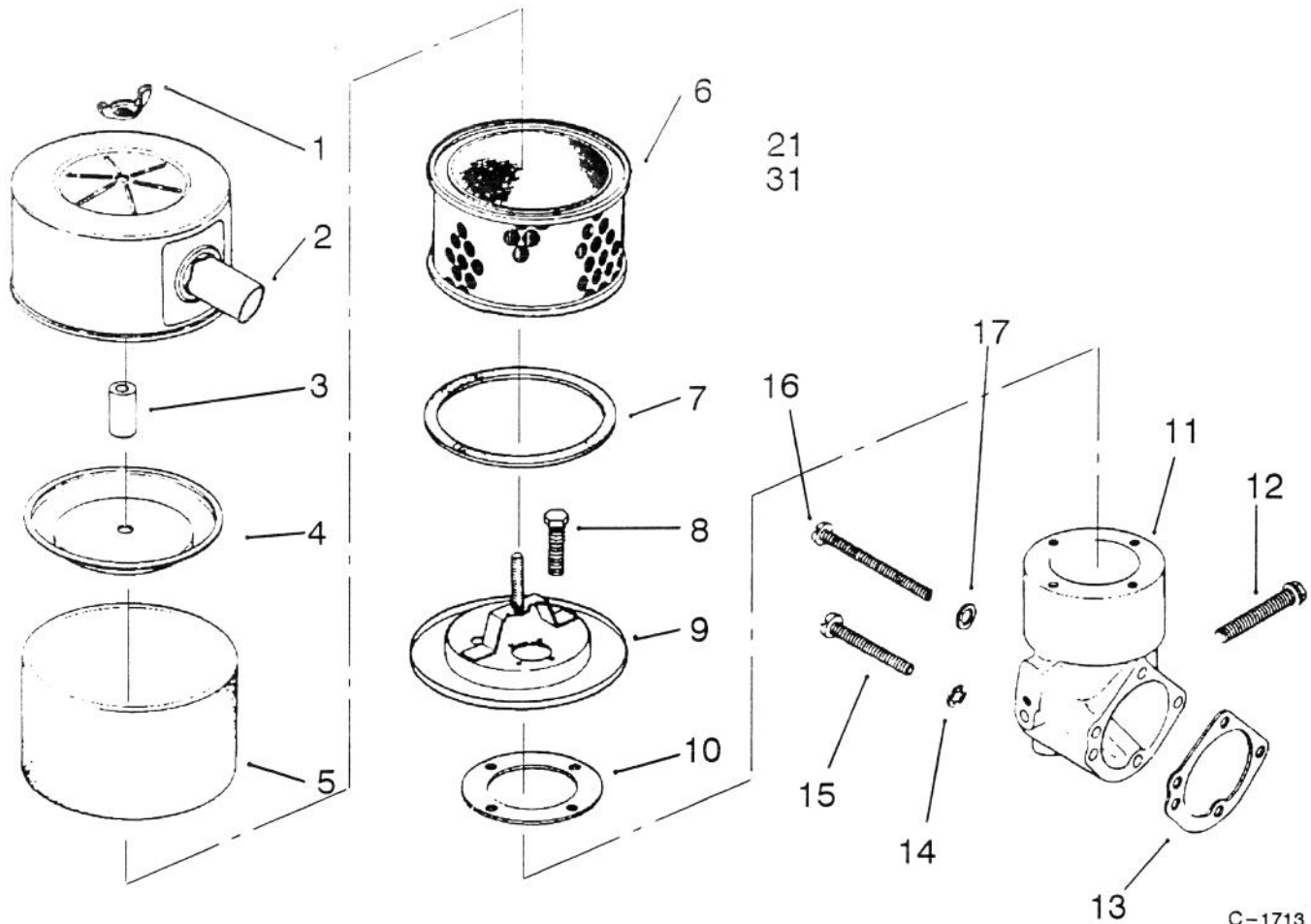


C-1712

PISTON & ROD

Ref. No.	Part No.	Description	No. Used
1	52 067 67	Rod - Connecting Std.	2
*	52 067 68	Rod - Connecting .010"	2
2	230004	Retainer - Piston Pin	4
3	52 874 11	Piston & Ring Set Std.	2
*	52 874 12	Piston & Ring Set .003"	2
*	52 874 13	Piston & Ring Set .010"	2

Ref. No.	Part No.	Description	No. Used
*	52 874 14	Piston & Ring Set .020"	2
*	52 874 15	Piston & Ring Set .030"	2
4	52 108 09	Ring Set Std. & .003"	2
*	52 108 10	Ring Set .010"	2
*	52 108 11	Ring Set .020"	2
*	52 108 12	Ring Set .030"	2

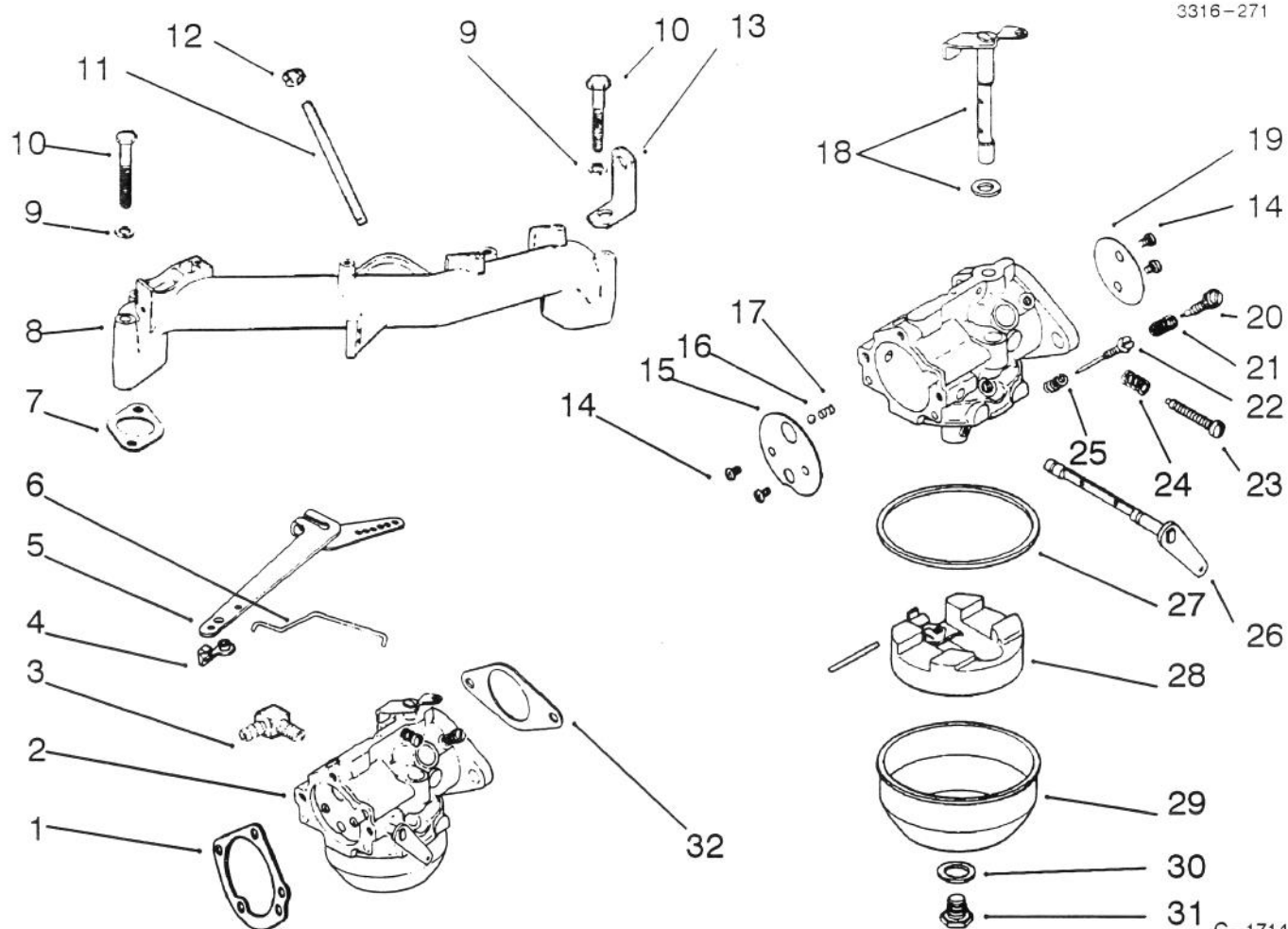


C-1713

AIR INTAKE

Ref. No.	Part No.	Description	No. Used
1	X-276-7	Nut - Wing	1
2	52 096 26	Cover - Air Cleaner	1
3	231032	Seal	1
4	52 082 04	Cover - Air Cleaner Element	1
5	45 083 01	Precleaner	1
6	45 083 02	Element - Air Cleaner	1
7	237423	Seal - Air Cleaner Cover	1
8	X-67-98	Screw - Hex. Washer Hd.	4
9	52 201 06	Base - Air Cleaner	1
10	277093	Gasket - Air Cleaner Base	1

Ref. No.	Part No.	Description	No. Used
11	52 754 01	Kit - Elbow (Incl. Ref. #12 & 13)	1
12	52 086 11	Screw - Cap Hex. Hd.	1
13	25 041 06	Gasket - Elbow	1
14	X-22-9	Washer - Lock	2
15	X-50-57	Screw - Round Hd.	2
16	X-50-37	Screw - Round Hd.	1
17	X-25-79	Washer - Plain	1
	25 113 07	Decal - Air Cleaner	1



C-1714

CARBURETOR

Ref. No.	Part No.	Description	No. Used
1	277069	Gasket – Air Cleaner	1
2	52 053 66	Carburetor	1
*	52 853 23	Kit – Carburetor w/Gasket (Incl. Ref. #1–8 & 14–31) (For Information Only, Not Available Separately)	1
*	25 757 11	Carburetor Repair Kit	1
3	25 155 02	Connector – Hose	1
4	25 158 09	Bushing – Governor Linkage	2
5	52 186 06	Arm – Governor	1
6	82 755 07	Kit – Governor Linkage (Incl. Ref. #13)	1
7	52 041 09	Gasket – Intake	2
8	52 164 10	Manifold – Intake	1
9	X-21-1	Washer – Lock	4
10	X-6-8	Screw – Cap Hex. Hd.	4
11	X-352-37	Stud	2
12	X-77-2	Nut	2
13	52 445 02	Strap – Lifting	2

Ref. No.	Part No.	Description	No. Used
14	25 086 27	Screw – Throttle & Choke	4
15	25 146 03	Plate – Choke	1
16	25 194 01	Ball – Choke Friction	1
17	25 089 03	Spring – Choke Friction	1
18	52 144 18	Shaft – Throttle Lever & Seal	1
19	25 146 02	Plate – Throttle	1
20	25 368 01	Needle – Idle Fuel Adjust	1
21	25 089 02	Spring	1

TORO PART NUMBER INDEX

Part No.	Description	Pg. Ref. No. No.	Qty.	Part No.	Description	Pg. Ref. No. No.	Qty.
76-1420	Wheel - Steering	2 29	1	53-4430	Decal - Oil	7 51	1
105805	Nut	2 73	1	54-0080	Transmission - Hydrostatic	16 8	1
112950	Washer	2 72	1	54-0090	Valve Assembly	8 23	1
113050	Cover - P.T.O. Switch	2 39	1	54-0100	Filter Head Assembly	7 63	1
113179	Nut	2 38	1	54-0110	Filter - Transmission Oil	6 44	1
116716	Switch - Clutch & Brake	2 41	1	54-0140	Hub - Wheel	4 2	2
3-6498	Washer	16 11	1	54-0150	Cylinder - Lift	5 18	1
3-6498	Washer - Thrust	3 8	5	54-0220	Clutch Assembly	13 15	1
3-6498	Washer - Thrust	2 52	2	54-0230	Field Assembly	14 1	1
5-0930	Key - Square	13 20	1	54-0240	Fan	16 44	1
11-0590	Screw	13 27	1	54-0260	Spool	10 1	1
12-1109	Lever - Idler	5 27	1	54-0280	Shaft	11 13	1
12-5950	Rod - Battery Support	12 18	1	54-0290	Seal Repair Kit	11 *	1
12-8130	Meter - Hour	8 29	1	54-0300	Piston	11 3	1
13-5969	Differential Assembly	17 52	1	54-0310	Head	11 6	1
14-4109	Hood	12 3	1	54-0320	Gear	16 7	1
19-1470	Bolt - Shoulder	6 41	2	54-0330	Frame - Rear	3 13	1
21-9260	Cover - Dust	1 21	1	54-0450	Axle Stand R.H.	7 60	1
22-8330	Plug	10 19	1	54-0460	Axle Stand - L.H.	6 39	1
22-8340	Spring	10 21	1	54-0560	Spindle L. H.	3 22	1
22-8350	Ball	10 22	1	54-0570	Spindle R.H.	3 7	1
22-8360	Pin - Cam	10 24	1	54-0880	Decal - Tunnel	2 47	1
22-8370	Seat - Check Valve	10 23	1	54-0900	Decal - Lift Control	8 13	1
22-8380	Retainer - Spring	10 3	2	54-0910	Decal - Warning	6 32	1
22-8410	Spring	10 4	1	54-0920	Decal - Parking Brake	8 1	2
22-8480	Ring - Retaining	10 6	1	54-0930	Pulley - Transmission	16 43	1
22-8490	Ring - Retaining	10 7	1	54-0950	Screen	13 8	1
22-8500	"O" Ring	10 2	2	54-0960	Spring - Parking Brake	5 42	1
23-1120	Washer - Flat	7 58	2	54-0990	Duct - Bottom	13 9	1
24-5790	Weight - Rear	3 17	1	54-1000	Tower - Top	1 24	1
27-0410	Bolt - Shoulder	6 28	2	54-1010	Channel - Front	6 45	1
27-5200	Spacer	10 5	1	54-1060	Bracket - Idler Mount	7 55	1
27-6230	Bolt - Shoulder	5 31	1	54-1120	Bracket - Filter Head	7 64	1
27-9080	Bushing	1 1	3	54-1130	Link - Idler Anchor	6 22	2
27-9080	Bushing	5 6	4	54-1170	Spring - Extension	5 30	1
27-9080	Bushing	3 31	2	54-1190	Bracket - Hour Meter	8 31	1
28-1120	Plug	10 18	1	54-1220	Support - Seat R.H.	8 8	1
28-2480	Washer - Flat	3 2	2	54-1230	Support - Seat L.H.	8 32	1
28-3892	Wire Assembly (Ground)	15 2	1	54-1260	Clamp - Battery	12 9	1
28-3940	Collar - Steering Shaft	2 45	2	54-1270	Bracket - Parking Brake	5 8	1
29-0590	Screen	12 35	1	54-1340	Link - Steering	2 43	1
29-6163	Switch	16 21	1	54-1380	"V" Belt	13 16	1
36-3220	Pulley - Idler	5 26	1	54-1380	Jackshaft - "V" Belt	6 40	1
36-4950	Cap - Oil	12 36	1	54-1390	"V" Belt	13 18	1
37-7250	Spacer	7 53	2	54-1390	"V" Belt - Traction	7 59	1
38-1420	Switch - Seat	9 2	1	54-1410	Spring - Idler	6 21	2
38-8000	Filter - Fuel	12 26	1	54-1440	Bracket - Tunnel	2 50	2
43-5220	Ring - Retaining	11 12	1	54-1451	Control - Throttle, Choke	1 25	2
44-8160	Washer - Flat	13 14	1	54-1470	Footrest - L.H.	2 63	1
44-8310	Ring - Retaining	14 3	2	54-1490	Rod - Steering	17 65	1
44-8320	Spring	14 10	3	54-1491	Rod - Steering, Rear	3 29	1
44-8330	Spacer - Bearing	14 6	1	54-1550	Support - Hood	8 30	1
44-8340	Collar - Bearing	14 7	1	54-1600	Jackshaft	17 57	1
44-8360	Field Coil, Rotor & Bearing	14 4	1	54-1700	Chamber - Air	8 27	1
44-8370	Armature & Pulley Assembly	14 5	1	54-1770	Bracket - Cable Traction	2 64	1
46-6680	Bushing	3 9	6	54-1780	Hose - Air Cleaner	13 24	1
46-6680	Bushing - Flanged	17 69	2	54-1790	Cover - Chamber	8 35	1
46-8091	Screw	12 42	2	54-1800	Plate - Engine Front	6 8	2
46-8560	Screw	6 35	6	54-1810	Plate - Engine, Rear	6 11	2
46-8560	Screw - Hex. Hd.	1 5	25	54-1830	Support - Shield	6 25	1
46-8560	Screw - Thread Forming	13 5	11	54-1850	Support - Battery	12 16	1
46-8560	Screw - Thread Forming	17 73	2	54-1860	Stop - Hood Upper	12 6	2
47-1980	Cover Steering Shaft	2 31	1	54-1870	Stop - Hood, Lower	6 31	2
49-6430	Pad - Reverse	1 12	1	54-1880	Strap - Fuel Tank	12 4	2
49-6470	Pad - Accelerator	1 4	1	54-1890	Foam - Tank	12 20	2

*Not Illustrated

TORO PART NUMBER INDEX (Cont.)

3316-271

Part No.	Description	Pg. Ref.		Part No.	Description	Pg. Ref.	
		No.	Qty.			No.	Qty.
54-1900	Tower - Front	1	3	56-3040	Spring - Relief Valve	18	24
54-1910	Channel - Side R.H.	6	6	56-3050	Plug - Relief Valve	18	23
54-1920	Channel - Side L.H.	6	33	56-3060	Pin - Dowel	18	26
54-1930	Fender R.H.	6	1	56-3080	Ring - Retaining	19	49
54-1940	Fender L.H.	6	36	56-3090	Ring - Retaining	19	48
54-1950	Bracket - Support Bearing	1	22	56-3100	Screw - Hex. Socket Hd.	19	45
54-2000	Pin - Pivot	5	13	56-3110	Pin - Roll	19	44
54-2030	Wire Assembly	15	3	56-3120	Carrier	18	3
54-2031	Wire Assembly	15	4	56-3130	Seal - Oil	19	43
54-2040	Follower Lever	2	54	56-3140	Control Shaft Kit	19	42
54-2060	Bellcrank Assembly	17	67	56-3170	Insert - Cam Ring	18	30
54-2070	Anchor - Spring	6	18	56-3180	Spring - Valve	18	27
54-2100	Pin - Pivot	5	39	56-3200	Body - Valve	18	28
54-2110	Lever - Brake	5	2	56-3210	Ball	18	29
54-2120	Link - Parking Brake	5	1	56-3220	Motor Rotor & Ball Assembly	19	39
54-2160	Bracket - Anchor	13	19	56-3230	Output Shaft Assembly	19	40
54-2260	Pad Footrest L.H.	2	62	56-3240	Race - Motor	19	41
54-2270	Pad - Footrest R.H.	2	68	56-3250	Plug Assembly	19	33
54-2290	Pipe - Exhaust	13	10	56-3260	"O"Ring	19	34
54-2310	Hydraulic Tube Assembly	12	28	56-3270	Seal - Oil	19	35
54-2330	Pulley - Engine	13	17	56-3280	Bearing - Output	19	36
54-2380	Pulley - Input	17	55	56-3290	Ring - Retaining	19	37
54-2390	Pulley - Output	17	74	56-3300	Screw - Hex. Socket Hd.	19	38
54-2470	Reservoir - Hydraulic	12	34	56-3310	Kit - Overhaul Seal	19	*
54-2480	Duct - Engine	13	6	56-3320	THook	5	20
54-2500	Channel - Middle	6	19	56-3370	Bracket - Spring	5	22
54-2630	Follower - Steering Shaft	2	53	56-6590	Screw	8	14
54-2640	Cable - Traction Control	2	44	56-6920	Bracket - Cable Extension	5	40
54-3110	Hinge - Seat	8	3	57-3100	Tie Rod - Steering	3	35
54-8970	UBolt	17	53	59-1470	Shaft - Bellcrank	17	72
54-9200	Lever - Idler	7	52	59-1500	Pivot - Axle	3	19
55-3570	Cap - Fuel	12	2	59-1550	Pedal - Shaft	2	65
55-3630	Adjustable Relief Valve	10	*	59-1610	Tube - Grease Fitting	1	14
55-3640	Seat - Relief	10	8	59-1620	Bracket - Transaxle	16	9
55-3650	Plug	10	26	60-8990	Plate - Transaxle	17	80
55-4300	Decal	5	43	60-9050	Bearing - Steering Shaft	2	46
55-4320	Gasket	16	5	60-9130	Bracket - Jackshaft	17	71
55-4860	Guide - Belt	6	37	60-9140	Frame - Footrest	2	51
55-7120	Switch - Brake	5	9	60-9150	Tunnel	2	66
55-7310	Bracket - Idler	5	34	61-3610	Decal - Warning	5	29
55-8660	Clamp Assembly	13	3	61-9780	Hub Cap	3	1
56-2760	Spring - Extension	5	21	62-4040	Tank - Fuel	12	15
56-2800	Screw - Hex. Socket Hd.	18	1	62-4420	Spacer	3	32
56-2810	Bearing - Input	19	47	62-4530	Idler - "V" Belt	6	43
56-2820	Seal - Oil	19	46	62-4540	Idler - Flat	7	56
56-2830	Charge Pump Assembly	18	2	62-6780	Shaft - Steering	2	30
56-2850	Ring - Seal	18	4	62-7400	Decal - Toro	2	70
56-2860	Plate - Pump	18	5	63-8360	Key	2	35
56-2870	Ring - Seal	18	6	63-8440	Decal - Hot	13	7
56-2880	Button	18	7	65-5100	Handle	12	41
56-2890	Pin - Dowel	18	8	66-0120	Knob	1	26
56-2900	Pin - Drive	18	9	66-1570	Frame - Lift	5	14
56-2910	Input Shaft Assembly	18	10	67-9800	Bumper	9	3
56-2920	Ring - Seal	18	11	68-3280	Spring - Seat	9	9
56-2930	Pump Rotor & Ball Assembly	18	12	72-4060	Bearing Assembly	17	79
56-2940	Cam Ring Assembly	18	14	72-7820	Decal - Service	13	25
56-2950	Piston	18	15	74-0110	Pedal - Traction	1	11
56-2960	Ring - Backup	18	16	74-0720	Tube - Manual	8	41
56-2970	"O"Ring	18	17	74-0861	Engine - Kohler	13	21
56-2980	Pin - Coil	18	18	74-0890	Decal - Proline 118	12	37
56-2990	Pintle Assembly	18	19	75-4130	Spacer	16	22
56-3000	Ring - Retaining	18	20	75-5470	Spacer Bearing	16	17
56-3010	Ball	18	21	76-1401	Seat	9	1
56-3020	Body - Check Valve	18	22	76-8640	Stud - Traction	16	14
56-3030	Ball	18	25	76-9430	Spring - Extension	17	84

*Not Illustrated

TORO PART NUMBER INDEX (Cont.)

Part No.	Description	Pg. Ref. No. No. Qty.	Part No.	Description	Pg. Ref. No. No. Qty.
77-0981	Boot - Terminal	12 10 1	251-210	Bearing - Ball	3 3 4
77-3100	Decal - Caution	6 7 2	251-288	Bearing w/Collar	17 59 2
78-0370	Insert - Steering Wheel	2 71 1	251-291	Bearing - Pulley	14 8 1
80-3750	Spacer	16 2 2	251-292	Bearing - Field	14 2 1
80-3760	Support - Seat, Front	8 2 1	251-304	Rod End	3 33 2
80-4910	Footrest - R.H.	2 69 1	251-304	Rod End	2 57 1
80-4920	Pedal - Accelerator	1 8 1	251-304	Rod End	17 61 1
80-4930	Footrest - Pedal	1 6 1	251-305	Rod End	3 25 3
82-4640	Battery	12 12 1	251-305	Rod End	17 63 1
82-4680	Lever - Valve	8 10 1	251-307	Bearing	16 16 2
82-4700	Bracket - Lever, Valve	8 20 1	251-341	Flange - Bearing	17 83 4
82-8640	Wire - Jumper (Hour Meter)	8 * 1	256-154	Bushing	5 32 2
82-8640	Wire Assembly	15 5 1	256-156	Bushing	1 10 2
88-9830	Switch - Ignition	2 36 1	283-17	Pin - Clevis	8 16 1
92-1770	Harness - Wire	15 1 1	283-55	Pin - Clevis	5 23 1
92-6250	Mount - Engine	6 10 1	302-2	Fitting - Grease	17 76 2
92-6251	Mount - Engine	6 12 1	302-5	Fitting - Grease	3 4 4
92-6252	Mount - Cylinder	7 47 1	302-22	Fitting - Grease	1 13 1
92-6254	Bar - Tension	6 24 1	302-40	Fitting - Grease 90°	16 12
92-6255	Axle - Rear	3 10 1	302-49	Fitting - Grease	3 21 3
92-6257	Plate - Pivot	3 24 1	302-49	Fitting - Grease	17 68 1
92-6266	Panel - Tower Rear	2 37 1	321-2	Screw	5 36 2
92-6267	Shield - Heat	12 21 1	321-2	Screw - Hex. Hd.	1 27 4
92-6269	Lever - Traction	16 23 2	321-2	Screw - Hex. Hd.	16 47 1
92-6270	Plate - Traction	16 10 1	321-3	Screw	7 49 2
92-6273	Bracket - Spring	17 85 1	321-3	Screw - Hex. Hd.	1 9 2
92-6274	Plug - Cap	12 25 1	321-3	Screw - Hex. Hd.	12 1 2
92-6277	Decal - Switch	2 40 1	321-4	Screw	3 15 4
92-6278	Decal - Throttle Choke	2 32 1	321-4	Screw	8 36 5
92-6281	Plate - Seat	8 12 1	321-4	Screw - Hex. Hd.	2 61 14
92-6283	Hose - Fuel	12 24 2	321-14	Screw	8 7 2
92-6288	Decal - Service	12 40 1	321-14	Screw	6 16 2
92-6289	Swing Arm Assembly	16 13	321-23	Screw	8 9 2
92-6290	Spacer	17 86 1	322-2	Screw	6 30 4
92-6291	Decal - Danger	12 * 1	322-3	Screw - Hex. Hd.	12 5 2
92-6292	Pad - Fender R.H.	6 2 1	322-4	Screw	8 6 8
92-6293	Pad - Fender L.H.	6 38 1	322-4	Screw	6 26 13
218-515	Bracket - Mounting	8 28 1	322-4	Screw	5 33 4
231-122	Tire	4 9 2	322-4	Screw - Hex. Hd.	1 2 19
231-126	Tire	3 5 2	322-4	Screw - Hex. Hd.	9 8 2
232-27	Valve Stem w/Cap	4 7 2	322-4	Screw - Hex. Hd.	12 17 2
232-27	Valve Stem w/Cap	3 36 2	322-4	Screw - Hex. Hd.	17 75 6
233-37	Knob	5 3 1	322-6	Screw	6 9 8
233-37	Knob	8 11 1	322-6	Screw	5 11 2
237-42	"O"Ring	10 20 2	322-6	Screw	6 23 11
237-42	"O"Ring	8 24 2	322-6	Screw - Hex. Hd.	16 32 2
237-42	"O"Ring	12 30 2	322-7	Screw - Hex. Hd.	16 18 1
237-78	"O"Ring	5 17 2	322-10	Screw	4 5 2
237-78	"O"Ring	8 19 2	322-10	Screw - Hex. Hd.	2 67 2
237-79	"O"Ring	16 39 2	322-11	Screw - Hex. Hd.	16 1 4
237-79	"O"Ring	7 62 1	323-7	Screw	6 20 3
237-80	"O"Ring	17 54 2	323-7	Screw	13 26 3
237-100	Grommet	12 19 1	323-8	Screw - Hex. Hd.	17 81 4
242-50	Nut	4 6 8	323-9	Screw	7 57 2
242-60	Rim	3 6 2	323-10	Screw	5 25 1
242-71	Bolt - Wheel	4 1 8	323-11	Screw	6 42 2
242-76	Rim	4 8 2	323-13	Screw - Hex. Hd.	17 50 1
2411-34	Ball Joint	1 16 1	323-14	Screw - Hex. Hd.	17 82 2
2411-34	Joint - Ball	16 25 1	323-16	Screw - Hex. Hd.	17 51 1
2412-3	Clamp - Hose	13 23 2	324-7	Screw	3 27 5
2412-94	"R"Clamp	8 26 1	324-7	Screw - Hex. Hd.	2 58 1
2412-100	"J"Clamp	6 13 1	324-7	Screw - Hex. Hd.	17 62 2
2412-100	"R"Clamp	12 22 1	324-11	Screw - Hex. Hd.	13 11 1
2412-108	Clamp - Hose	12 23 4	325-6	Screw	3 38 2
2412-120	"R"Clamp	8 38 2	327-24	Screw	7 48 1

*Not Illustrated

TORO PART NUMBER INDEX (Cont.)

3316-271

Part No.	Description	Pg. Ref.			Part No.	Description	Pg. Ref.		
		No.	No.	Qty.			No.	No.	Qty.
3212-24	Screw - Hex. Hd.	13	13	1	3296-15	Nut	5	41	2
3217-6	Nut	16	19	4	3296-25	Nut	16	24	1
3217-6	Nut - Hex.	13	1	1	3296-29	Nut	5	7	6
3217-26	Nut	8	34	1	3296-29	Nut	6	14	33
3220-1	Nut - Hex. Jam	16	26	1	3296-29	Nut	3	16	8
3220-1	Nut - Jam	1	17	1	3296-29	Nut	8	4	8
3220-4	Nut - Hex. Jam	17	64	2	3296-29	Nut - Hex.	12	7	9
3220-4	Nut - Jam	3	28	3	3296-29	Nut - Lock	16	3	16
3220-6	Nut - Jam	5	12	2	3296-29	Nut - Lock	4	4	2
3220-19	Nut - Jam	3	34	2	3296-29	Nut - Lock	1	18	24
3229-1	Bolt - Carriage	12	11	4	3296-39	Nut	8	37	1
3230-1	Bolt - Carriage	17	58	6	3296-41	Nut - Hex.	3	12	1
3230-3	Bolt - Carriage	13	4	1	3296-42	Nut - Lock	7	65	2
3230-16	Bolt - Carriage	9	4	4	3296-42	Nut - Lock	12	14	8
3234-1	Screw - Hex. Flange Hd.	16	4	5	3296-42	Nut - Lock	8	21	19
3234-14	Screw	6	3	4	3296-42	Nut - Lock	1	23	16
3241-1	Screw - Set	17	56	4	3296-44	Nut	5	28	1
3241-2	Screw - Set	16	42	2	3296-44	Nut	6	17	6
3245-35	Screw - Set	17	60	4	3296-44	Nut - Hex.	13	22	3
3250-46	Screw	16	36	2	3296-61	Nut	7	46	1
3252-4	Washer - Lock	9	7	4	32103-22	Nut - Wing	12	8	3
3253-3	Washer	5	37	2	32103-23	Nut - Wing	9	5	4
3253-3	Washer - Lock	16	46	1	32104-76	Screw	8	40	2
3253-3	Washer - Lock	7	50	2	32115-5	Nut - Square	2	60	4
3253-4	Washer - Lock	13	2	1	32120-64	Ring - Snap	16	6	1
3253-6	Washer - Lock	13	12	2	32121-10	Pin - Roll	1	28	1
3253-7	Washer	3	39	2	32121-10	Pin - Roll	1	28	1
3255-5	Washer - Lock	17	49	3	32121-20	Pin - Roll	1	19	1
3255-8	Washer - Lock, Ext. Tooth	7	69	1	32121-31	Pin - Roll	1	20	2
3256-1	Washer	12	13	4	32121-45	Pin - Roll	1	7	1
3256-1	Washer	5	38	2	32121-51	Pin - Roll	3	30	1
3256-3	Washer - Flat	7	54	2	32121-77	Pin Roll	2	59	2
3256-3	Washer - Flat	17	78	4	32128-20	Nut - Flange Lock	2	48	2
3256-4	Washer - Flat	3	26	7	32128-20	Nut - Flange Lock	7	67	1
3256-4	Washer - Flat	2	56	1	32144-1	Screw - Thread Forming	5	10	2
3256-23	Washer	9	6	4	32144-11	Screw - Thread Forming	6	5	2
3256-23	Washer - Flat	6	4	8	32144-15	Screw	3	18	2
3256-23	Washer - Flat	8	5	6	32144-19	Screw - Round Hd.	16	48	3
3256-23	Washer - Flat	2	49	4	32149-1	Nut - Lock	6	27	1
3256-24	Washer - Flat	5	4	2	32149-1	Nut - Lock	17	70	6
3256-51	Screw	8	39	2	32151-48	Ring - Retaining	3	11	2
3256-55	Washer	16	45	1	32152-9	Nut	3	23	5
3256-68	Washer	17	87	2	32152-9	Nut - Lock	2	55	1
3257-5	Key - Woodruff	16	41	3	32152-9	Nut - Lock	17	66	2
3257-10	Key - Woodruff	4	3	2	32152-10	Nut - Lock	11	2	1
3257-24	Key - Woodruff	16	37	1	32153-3	Nut	5	15	2
3272-6	Pin - Cotter	8	15	1	335-8	Washer - Ext. Tooth	8	33	1
3272-10	Pin - Cotter	5	5	2	3356-1	Washer - Flat	8	25	10
3272-12	Pin - Cotter	3	37	2	33296-44	Nut - Lock	17	77	4
3290-211	Washer - Spring	6	29	2	353-370	Fitting - Hydraulic 90°	16	40	2
3290-250	Pin - Cotter	6	15	2	353-371	Fitting - 90°	7	61	2
3290-355	Pin - Cotter	5	24	1	353-375	Fitting - 90°	5	19	1
3290-379	Cable Tie	7	66	7	353-375	Fitting - 90°	8	22	1
3290-440	Washer - Belleville	2	42	1	353-385	Fitting - Hydraulic Straight	12	29	2
3296-3	Nut - Hex.	1	15	1	353-431	Fitting - 45°	5	16	1
3296-3	Nut - Lock	16	35	1	353-511	Fitting	8	17	2
3296-6	Nut	5	35	1	353-511	Fitting - Hydraulic 90°	16	38	2
3296-6	Nut - Lock	14	9	3	353-545	Fitting	8	18	1
3296-9	Nut	16	20	2					

*Not Illustrated

PRODUCT CHANGES

In an effort to make improvements available to TORO owners as quickly as possible, minor changes are incorporated into Toro's products from time to time that do not become immediately shown in the Parts Catalog. If such a change has been made in your unit, which is not reflected in your manual, see your TORO Distributor or his Authorized TORO Service Dealer for information and part numbers.

IDENTIFICATION AND ORDERING

MODEL AND SERIAL NUMBERS

The ProLine 118 has two identification numbers; a model number and a serial number. The two numbers are stamped on a plate which is located on the main frame under the seat. In any correspondence concerning the ProLine 118, supply model and serial numbers to assure that correct information and replacement parts are obtained.

To order replacement parts from an Authorized TORO Service Dealer, supply the following information:

1. Model and serial number of the ProLine 118.
2. Part number, description, and the quantity of part(s) desired.

NOTE: Do not order by reference number if a parts catalog is being used; use the PART NUMBER.

TABLE OF CONTENTS

Description	Page	Description	Page
Frame And Steering Assembly	1	Hydraulic Schematic	22
Rear Axle Assembly	3	Engine Kohler Model M18QS-24657	
Front Wheel Assembly	4	Baffles & Shroud	23
Parking Brake & Frame Assembly	5	Breather & Vents	24
Frame And Jackshaft Assembly	6	Cylinder Barrel, Heads And Valves	25
Seat Support Assembly	8	Crankcase	26
Seat Assembly	9	Piston & Rod	27
Valve Assembly No.54-0090	10	Air Intake	28
Hydraulic Lift Cylinder No. 54-0150	11	Carburetor	29
Hood, Fuel Tank & Hydraulic Reservoir Assembly	12	Fuel Pump	30
Engine Assembly	13	Governor	31
Clutch Assembly No. 54-0220	14	Oil Dipstick, Filter & Pump	32
Electrical Schematic	15	Electric Starter	33
Transmission & Differential Assembly	16	Ignition And Flywheel	34
Hydrostatic Transmission Assembly	18	Exhaust	35
Differential Assembly	20	Numeric Index, Toro P/N Only	36

Optional equipment

Description	Model No./Part No.	Description	Model No./Part No.
Flotation Kit	30759	48" Recycler Deck	30548
44" Deck Baffle Kit	60-9030	52" Side Discharge Deck	30753
52" Deck Baffle Kit	68-7210	44" Grass Collection System	30751
44" Leaf Mulcher Deck	30752	52" Grass Collection System	30576
52" Leaf Mulcher Deck	30700	Tire Chain Kit	56-6630
Wheel Weight Kit	56-6620	Rear Weight	62-6590
44" Snowthrower	30761	Cab Kit	
44" Side Discharge Deck	30544	Remote Air Cleaner Kit	55-8460
48" Rear Discharge Deck	30747		