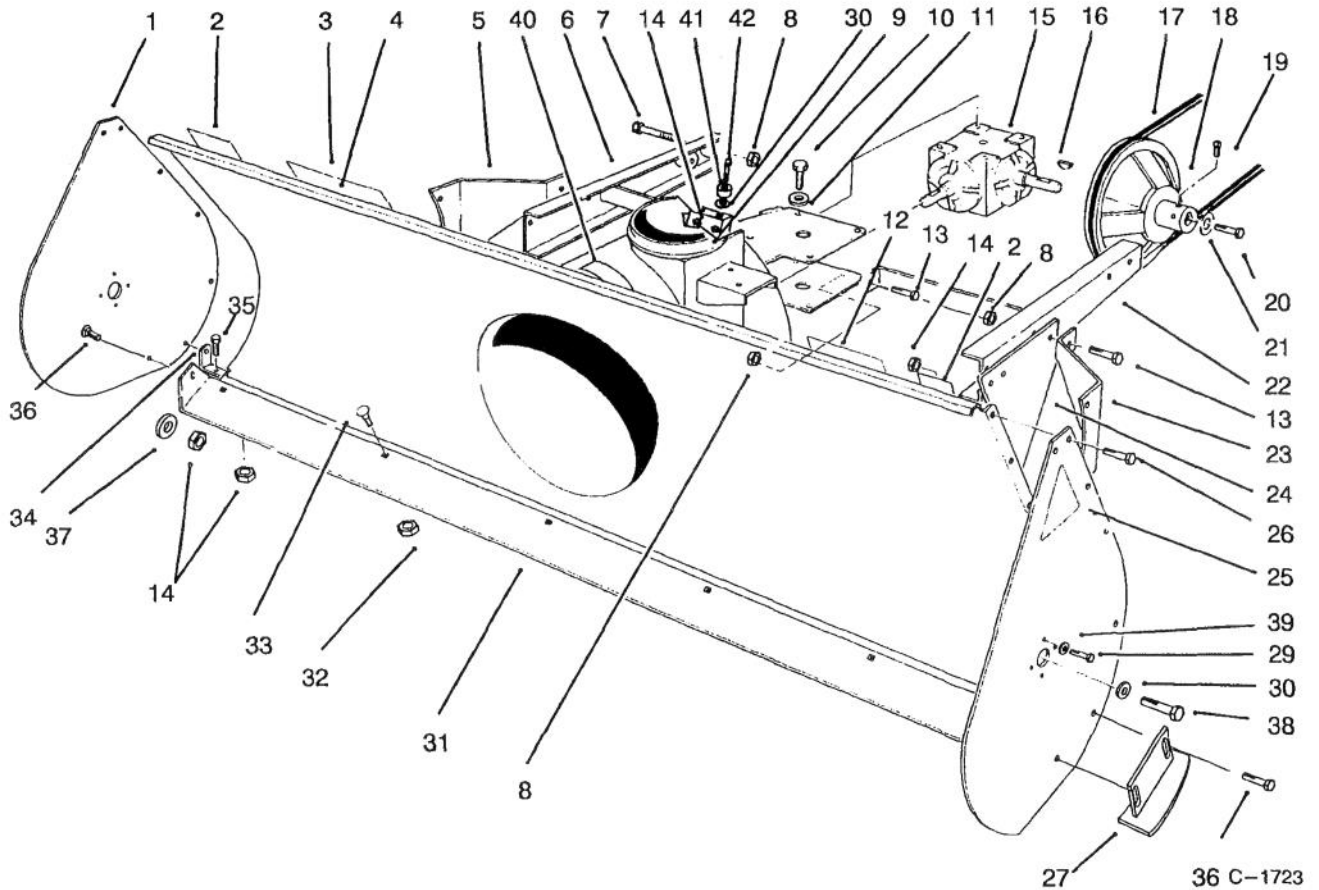




MODEL NO. 30761-4900001 & UP

PARTS  
CATALOG

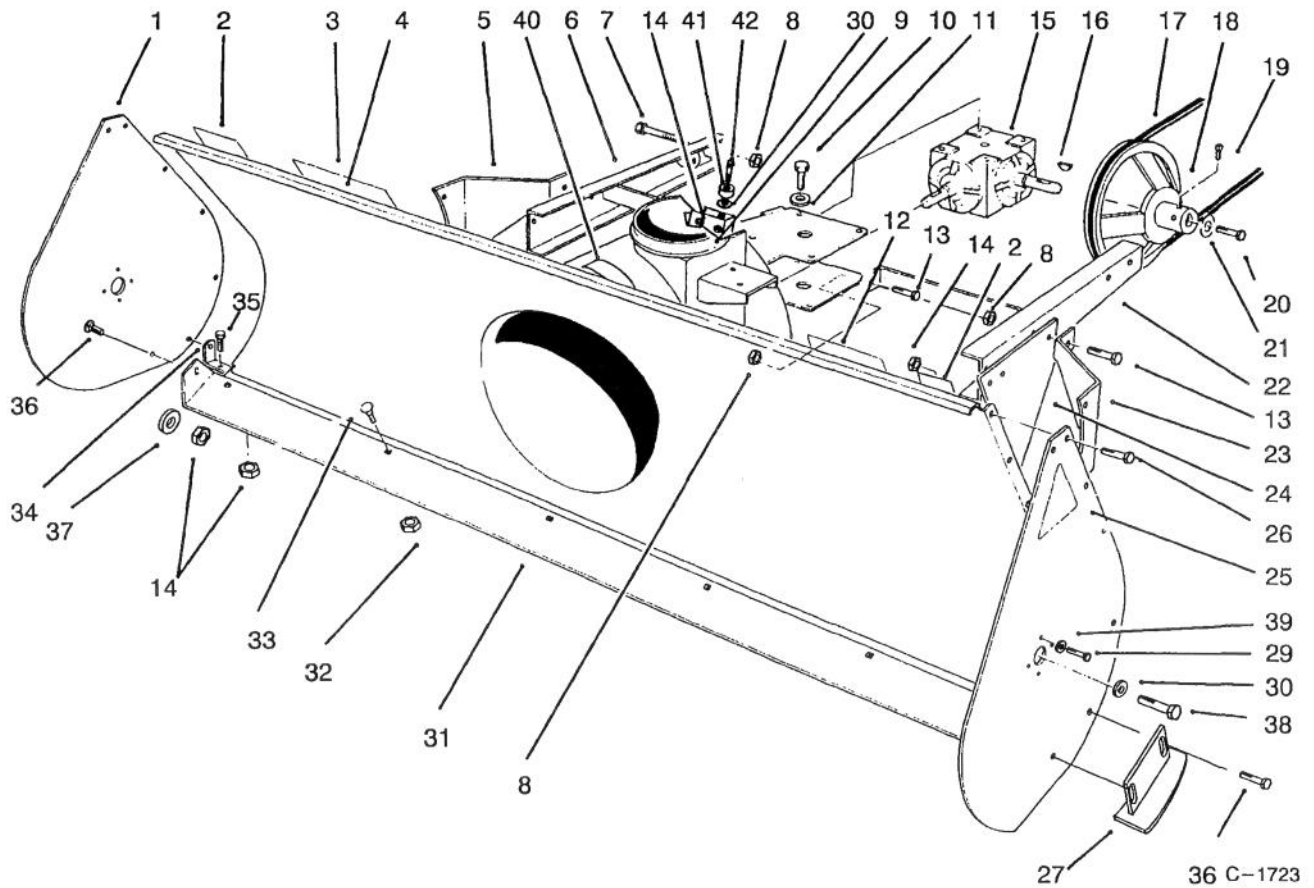
**44" SNOWTHROWER**  
For Proline 118 & 120



**HOUSING ASSEMBLY**

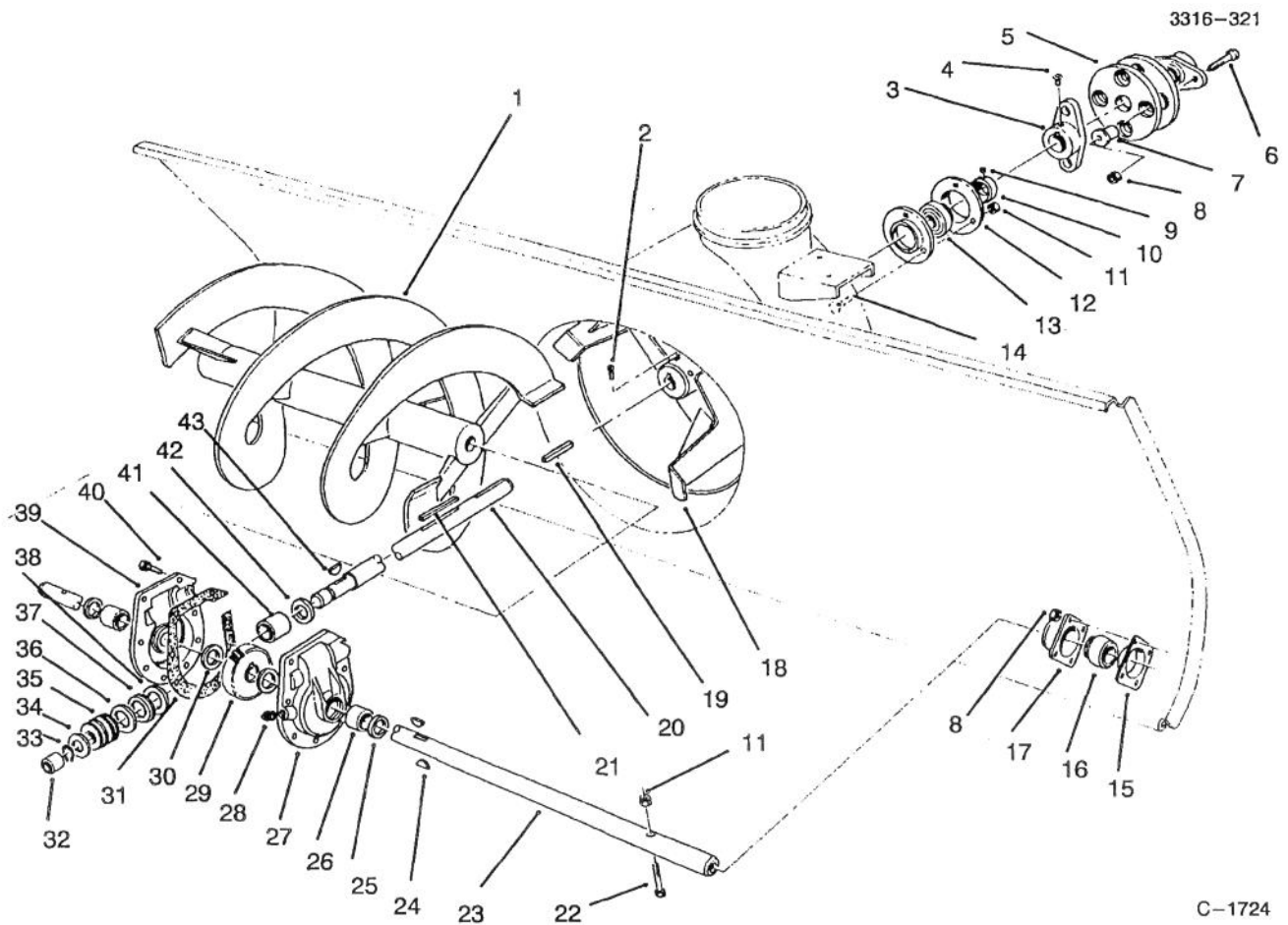
Ref. No.	Part No.	Description	No. Used
1	57-3510	Plate - Side	2
2	63-2380	Decal - Auger Danger	2
3	92-8652	Decal - Warning	1
4	92-8660	Housing - Auger	1
5	57-3570	Plate - Extension RH	1
6	57-3710	Bar - Extension	1
7	323-12	Screw - Hex. Hd.	4
8	3296-39	Nut - Lock	16
9	25-5170	Ring - Chute	1
10	323-4	Screw - Hex. Hd.	8
11	3254-6	Washer - Lock	8
12	92-8019	Decal - Rear Weight	1

Ref. No.	Part No.	Description	No. Used
13	323-6	Screw - Hex. Hd.	6
14	3296-29	Nut - Lock	22
15	61-8650	Gear Box	1
16	3257-5	Key - Woodruff	2
17	57-3650	Belt	1
18	57-3640	Pulley - Drive	1
19	3242-4	Screw - Set	2
20	30-1070	Screw - Hex. Hd.	1
21	3256-57	Washer	1
22	57-3520	Bar - Extension	1
23	57-3560	Plate - Extension LH	1
24	57-3550	Plate - Skid Mount	2



## HOUSING ASSEMBLY

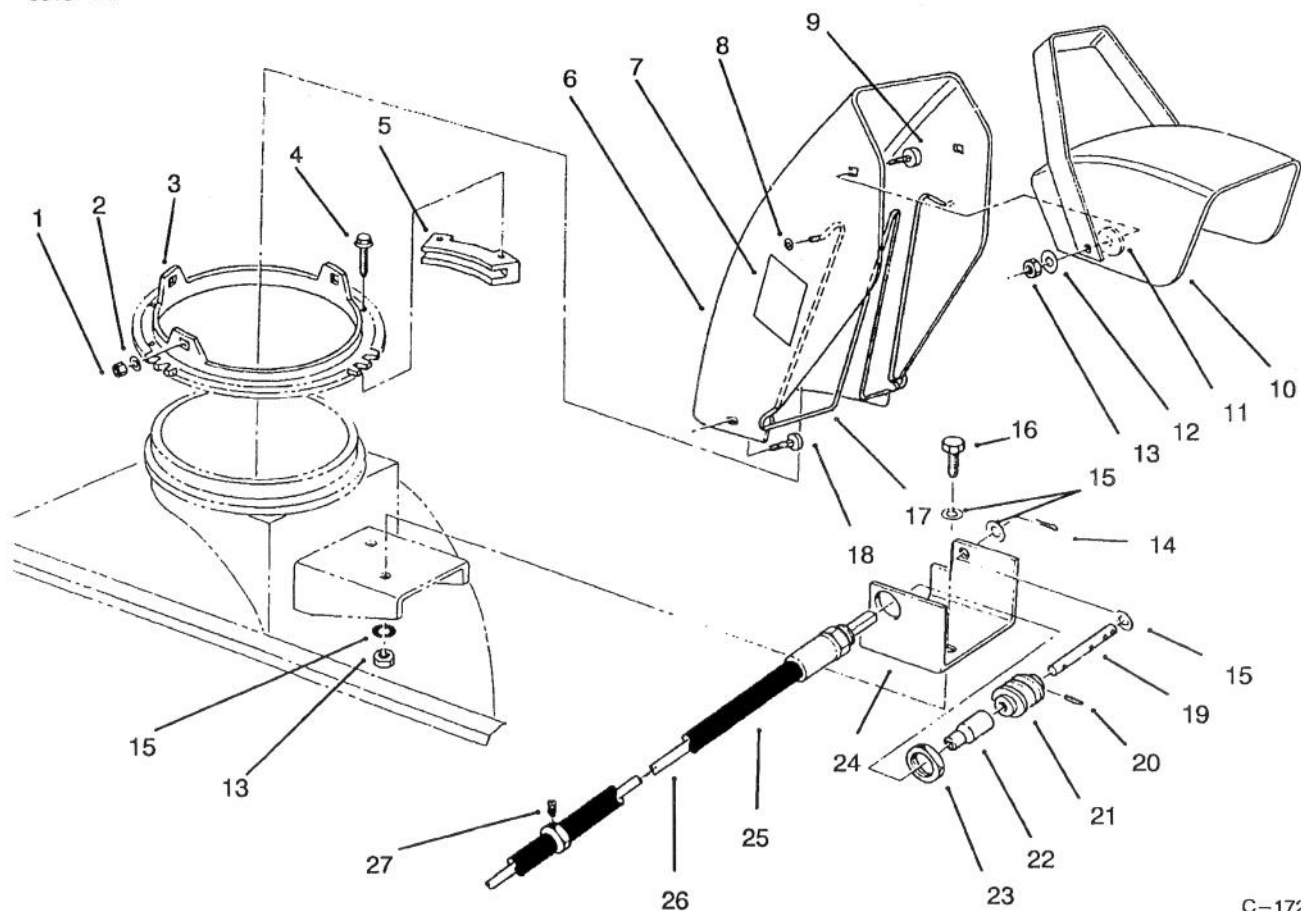
Ref. No.	Part No.	Description	No. Used	Ref. No.	Part No.	Description	No. Used
25	62-5550	Decal - Auger Sideplate	2	35	322-3	Screw - Hex. Hd.	2
26	322-5	Screw - Hex. Hd.	16	36	3230-2	Bolt - Carriage	4
27	78-0800	Skid	2	37	3256-23	Washer	2
29	321-4	Screw - Hex. Hd.	8	38	3235-22	Screw - Hex. Hd.	2
30	2844	Washer - Flat	4	39	3256-22	Washer	8
31	79-6670	Blade - Scraper	1	40	74-2080	Decal - Proline	1
32	3296-16	Nut - Lock	6	41	108889	Bumper	1
33	3229-25	Bolt - Carriage	6	42	322-6	Screw	2
34	57-9890	Bracket - Blade Support	2				



## AUGER ASSEMBLY

Ref. No.	Part No.	Description	No. Used
1	57-3300	Auger RH	1
*	57-3370	Auger LH	1
2	3242-4	Screw - Set	2
3	61-4000	Hub	2
4	3241-5	Screw - Set	4
5	44-2230	Coupling - Rubber	2
6	321-9	Screw - Hex. Hd.	4
7	27-6601	Spacer - Coupling	4
8	3296-16	Nut - Lock	12
9	3245-32	Screw - Set	2
10	251-231	Collar - Locking	1
11	3296-29	Nut - Lock	5
12	251-229	Bearing - Flange	2
13	251-224	Bearing - Impeller	1
14	3230-1	Bolt - Carriage	3
15	20-1000	Bearing - Flange Rear	2
16	20-0980	Bearing	2
17	20-0990	Bearing - Flange Front	2
18	19-8890	Impeller	1
19	21-5070	Key - Square	1
20	57-3490	Shaft - Impeller	1
21	6-8590	Key - Impeller	1
22	322-14	Screw - Hex. Hd.	2
23	57-3500	Shaft - Auger	1

Ref. No.	Part No.	Description	No. Used
24	3257-33	Key - Woodruff	2
25	7-0045	Seal - Oil	2
26	256-237	Bushing	2
27	37-8860	Gear Case & Bushing Assy. (Incl. Ref. #25 & 26)	1
28	281-1	Plug - Pipe	1
29	5-7180	Gear - Worm	1
30	252-71	Bearing - Thrust	2
31	51-0460	Gasket	2
32	256-32	Bushing	1
33	32120-72	Ring - Retaining	1
34	3-8664	Washer - Thrust	1
35	5-7170	Worm	1
36	252-77	Washer - Thrust	1
37	252-76	Bearing - Thrust	1
38	252-78	Washer - Thrust	1
39	37-8850	Gear Case & Bushing Assy. (Incl. Ref. #25 & 26)	1
40	32144-41	Screw - Thread Forming	8
41	20-3210	Bushing	1
42	237-87	Seal	1
43	3257-23	Key - Woodruff	1
*	57-3480	Gear Box Assembly	1

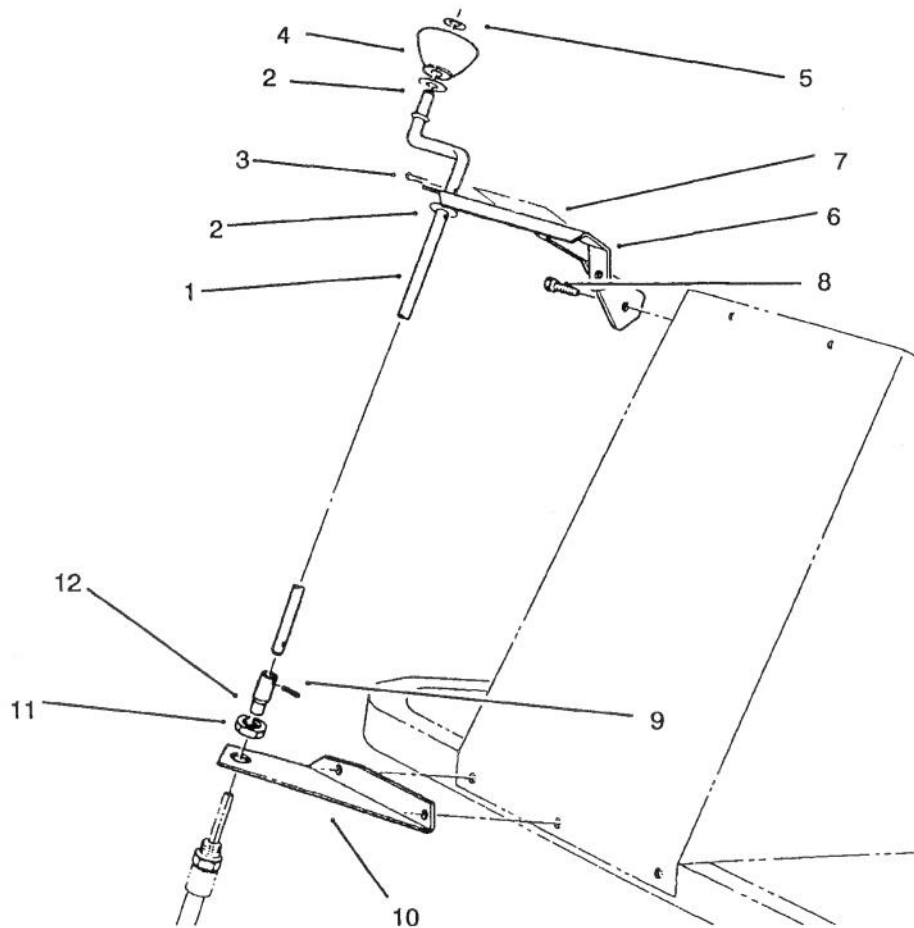


C-1725

## CHUTE ASSEMBLY

Ref. No.	Part No.	Description	No. Used
1	3296-29	Nut - Lock	3
2	3256-23	Washer	3
3	25-5290	Ring - Chute Swivel	1
4	27-0220	Screw - Special	6
5	25-5450	Retainer - Chute	3
6	92-6335	Chute - Upper (Incl. Ref. # 7)	1
7	67-3740	Decal - Discharge Danger	2
8	3290-326	Nut - Push	2
9	3231-2	Bolt - Carriage	2
10	11-9349	Deflector	1
11	20-4320	Washer - Rubber	2
12	3290-340	Washer - Belleville	2
13	3296-39	Nut - Lock	4

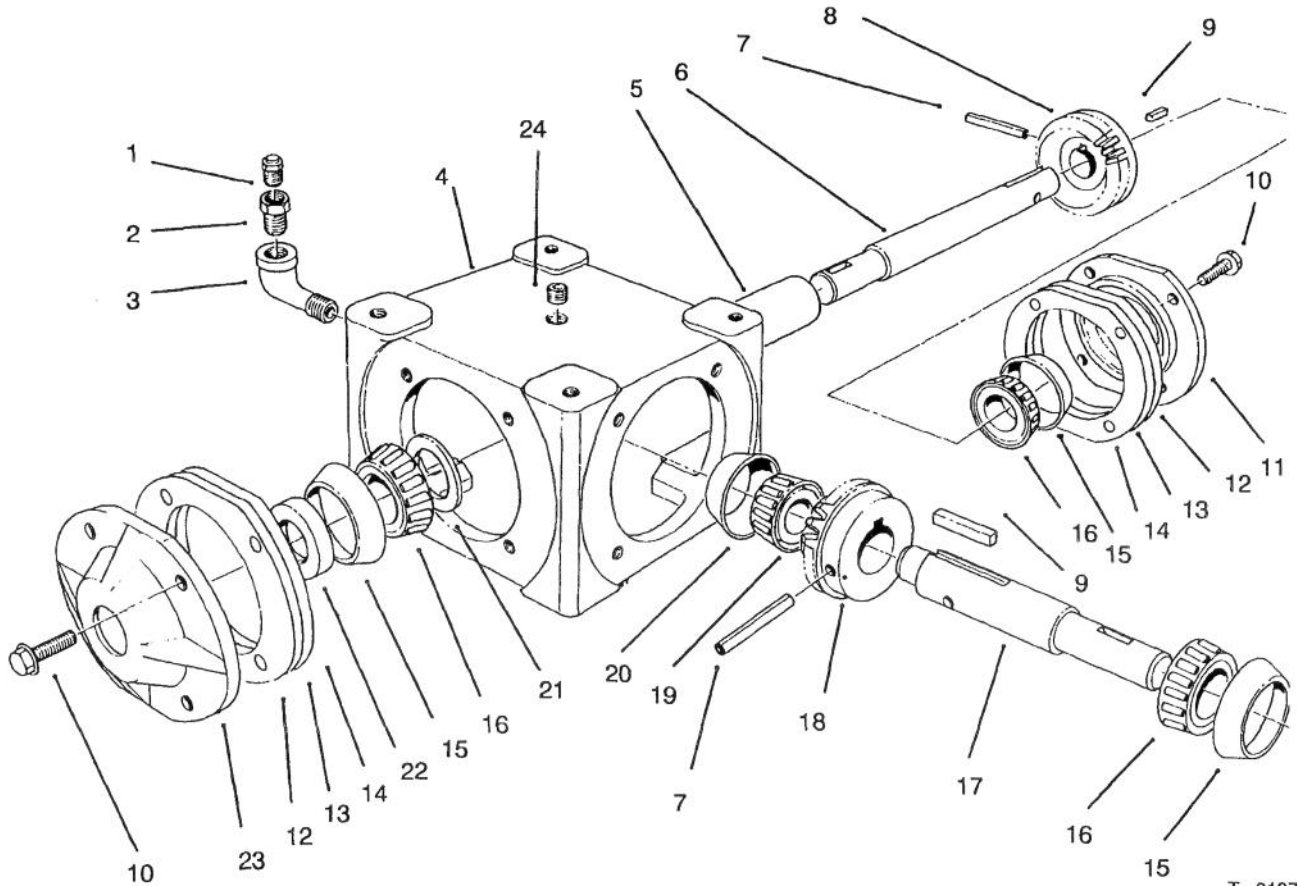
Ref. No.	Part No.	Description	No. Used
14	3272-10	Pin - Cotter	2
15	3256-24	Washer - Flat	6
16	323-6	Screw	2
17	54-9770	Wire - Chute	1
18	3230-18	Bolt - Carriage	3
19	61-4950	Shaft - Worm Gear	1
20	32121-50	Pin - Roll	2
21	8-8600	Gear - Worm	1
22	61-4940	Coupler	1
23	353-955	Nut - Lock	1
24	61-4930	Bracket - Worm Gear	1
25	61-4870	Hose - Assembly	1
26	61-8520	Shaft - Flexible	1
27	302-5	Fitting - Grease	1



C-1726

## CHUTE CONTROL ASSEMBLY

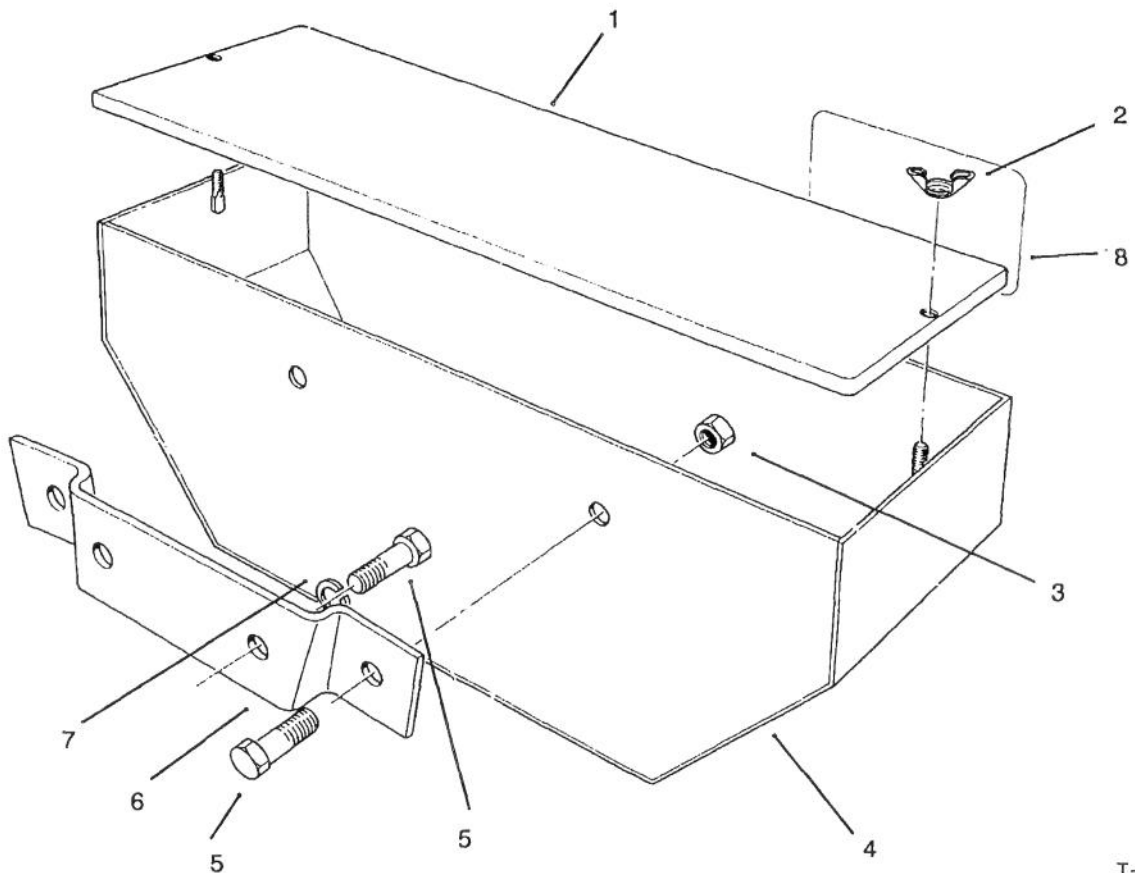
Ref. No.	Part No.	Description	No. Used	Ref. No.	Part No.	Description	No. Used
1	61-4900	Rod - Chute Control	1	7	63-3510	Decal - Chute Rotation	1
2	3256-24	Washer - Flat	3	8	321-4	Screw - Hex. Hd.	2
3	3272-10	Pin - Cotter	2	9	32121-50	Pin - Roll	1
4	61-4890	Knob	1	10	61-4910	Bracket - Bottom	1
5	3290-320	Cap - Push	1	11	353-955	Nut - Lock	1
6	61-4920	Bracket - Top	1	12	61-4940	Coupler	1



### GEAR BOX ASSEMBLY

Ref. No.	Part No.	Description	No. Used
1	62-3520	Valve - Pressure Relief	1
2	62-3550	Bushing - Reducer	1
3	62-3540	Elbow - Street	1
4	62-3300	Housing	1
5	62-3480	Spacer	1
6	62-3460	Shaft	1
7	62-3510	Pin - Roll	2
8	62-3500	Gear	1
9	62-3380	Key	2
10	62-3310	Screw - Hex. Hd.	12
11	62-3320	Cap	1
12	62-3420	Gasket - .015"	A/R

Ref. No.	Part No.	Description	No. Used
13	62-3430	Gasket - .005"	A/R
14	62-3440	Gasket - .003"	A/R
15	62-3340	Cup - Bearing	3
16	62-3330	Cone - Bearing	3
17	62-3390	Shaft	1
18	62-3350	Gear	1
19	62-3370	Cone - Bearing	1
20	62-3360	Cup - Bearing	1
21	62-3470	Washer	1
22	62-3400	Seal	2
23	62-3410	Cap	2
24	62-3490	Plug - Pipe	1

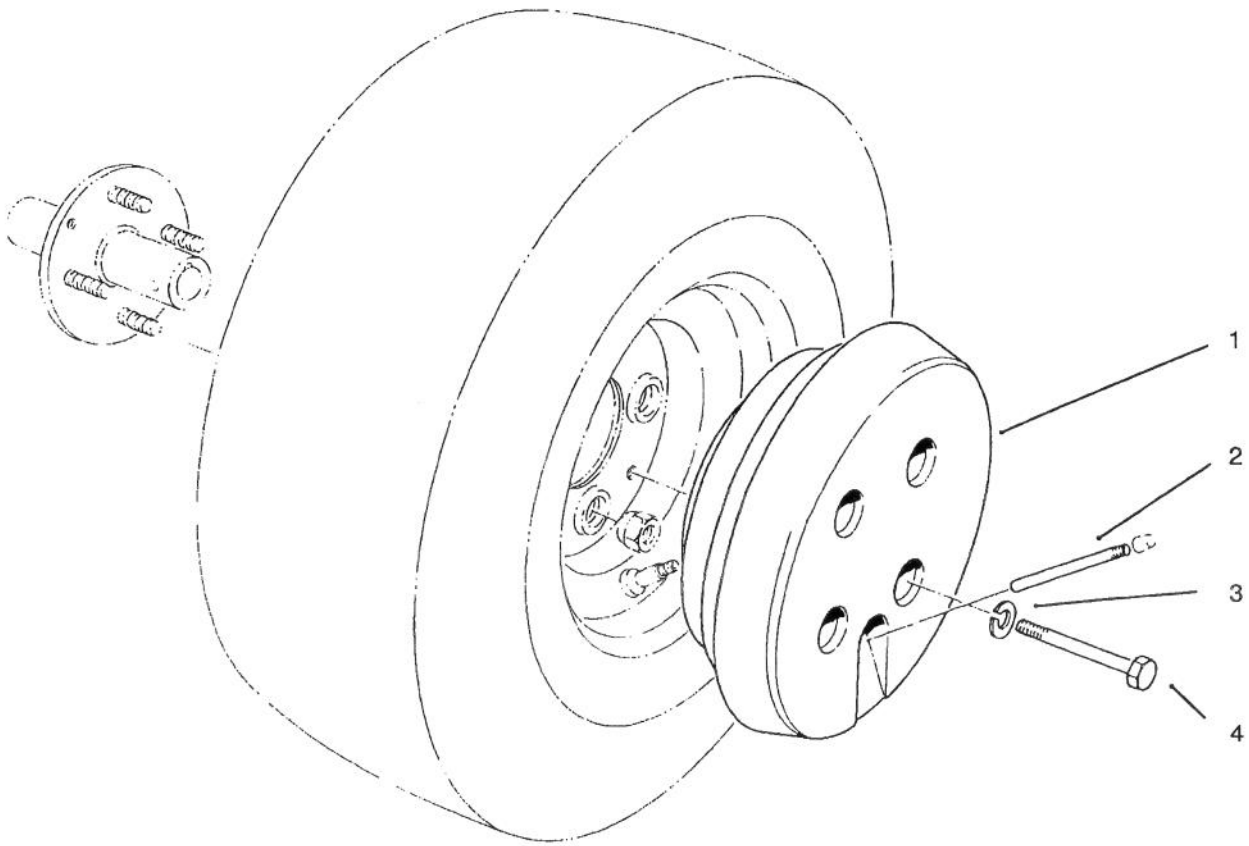


T-0108

## WEIGHT BOX ASSEMBLY

Ref. No.	Part No.	Description	No. Used	Ref. No.	Part No.	Description	No. Used
1	61-4130	Cover - Weight Box	1	8	62-5550	Decal	1
2	32103-2	Nut - Wing	2	*	40-0590	Reflector	2
3	3296-25	Nut - Lock	2	*	56-6630	Tire Chain Kit (Optional)	1
4	61-4090	Box - Weight	1	*	2410-67	Plug	2
5	325-5	Screw - Hex. Hd.	4	*	61-4090	Weight Box Assembly (Incl. Ref. #1-8)	1
6	61-4140	Bracket - Mount	1				
7	3253-7	Washer - Lock	2				

\*Not Illustrated

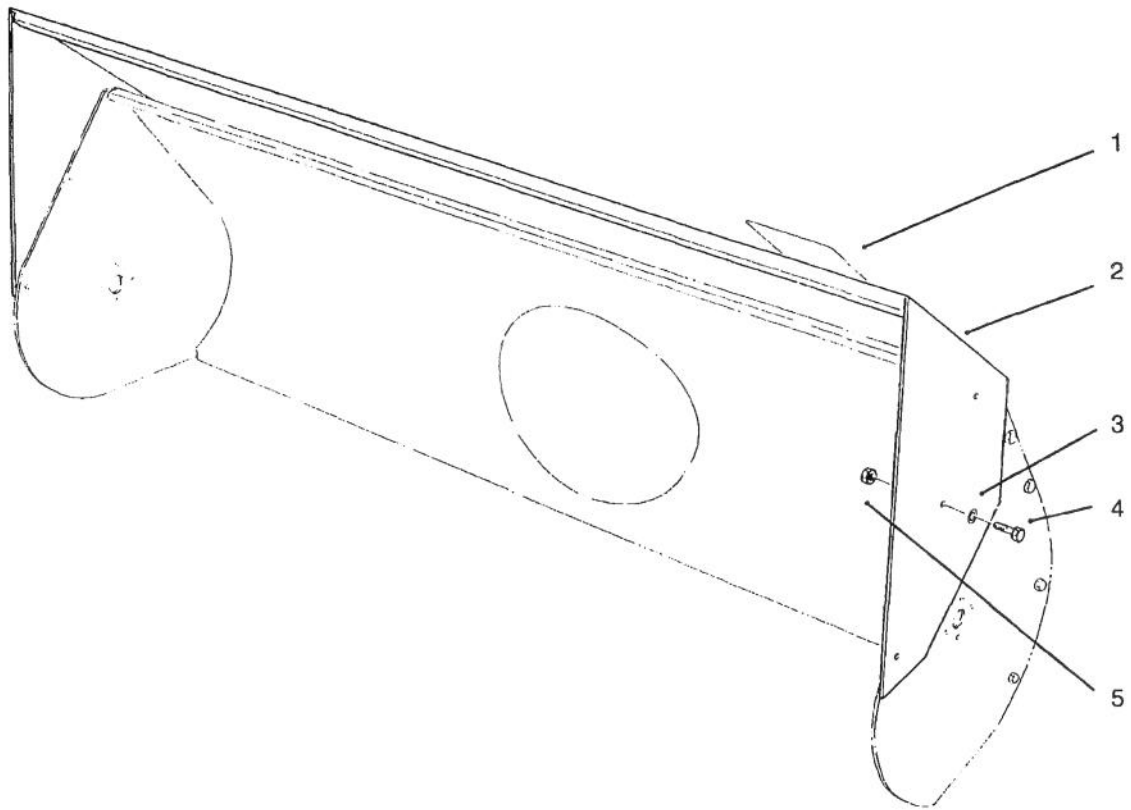


T-0109

### WHEEL WEIGHT

Ref. No.	Part No.	Description	No. Used
1	56-5310	Weight - Wheel	2
2	232-45	Extension - Valve	2

Ref. No.	Part No.	Description	No. Used
3	3253-4	Washer - Lock	4
4	322-19	Screw - Hex. Hd.	4



T-0110

## AUGER EXTENSION

Ref. No.	Part No.	Description	No. Used	Ref. No.	Part No.	Description	No. Used
1	42-1770	Decal	1	4	322-4	Screw - Hex. Hd.	4
2		Extension - Auger	1	5	3296-29	Nut - Lock	4
3	3256-2	Washer	4	*	62-5780	Kit - Auger Extension	1

\*Not Illustrated

# TORO PART NUMBER INDEX

3316-321

Part No.	Description	Pg. Ref. No. No. Qty.	Part No.	Description	Pg. Ref. No. No. Qty.
2844	Washer - Flat	2 30 4	61-8650	Gear Box	1 15 1
3-8664	Washer - Thrust	3 34 1	62-3300	Housing	6 4 1
5-7170	Worm	3 35 1	62-3310	Screw - Hex. Hd.	6 10 12
5-7180	Gear - Worm	3 29 1	62-3320	Cap	6 11 1
6-8590	Key - Impeller	3 21 1	62-3330	Cone - Bearing	6 16 3
7-0045	Seal - Oil	3 25 2	62-3340	Cup - Bearing	6 15 3
8-8600	Gear - Worm	4 21 1	62-3350	Gear	6 18 1
108889	Screw	2 42 2	62-3360	Cup - Bearing	6 20 1
11-9349	Deflector	4 10 1	62-3370	Cone - Bearing	6 19 1
19-8890	Impeller	3 18 1	62-3380	Key	6 9 2
20-0980	Bearing	3 16 2	62-3390	Shaft	6 17 1
20-0990	Bearing - Flange Front	3 17 2	62-3400	Seal	6 22 2
20-1000	Bearing - Flange Rear	3 15 2	62-3410	Cap	6 23 2
20-3210	Bushing	3 41 1	62-3420	Gasket - .015	6 12A/R
20-4320	Washer - Rubber	4 11 2	62-3430	Gasket - .005	6 13A/R
21-5070	Key - Square	3 19 1	62-3440	Gasket - .003	6 14A/R
25-5170	Ring - Chute	1 9 1	62-3460	Shaft	6 6 1
25-5290	Ring - Chute Swivel	4 3 1	62-3470	Washer	6 21 1
25-5450	Retainer - Chute	4 5 3	62-3480	Spacer	6 5 1
27-0220	Screw - Special	4 4 6	62-3490	Plug - Pipe	6 24 1
27-6601	Spacer - Coupling	3 7 4	62-3500	Gear	6 8 1
30-1070	Screw - Hex. Hd.	1 20 1	62-3510	Pin - Roll	6 7 2
37-8850	Gear Case & Bushing Assy.	3 39 1	62-3520	Valve - Pressure Relief	6 1 1
37-8860	Gear Case & Bushing Assy.	3 27 1	62-3540	Elbow - Street	6 3 1
40-0590	Reflector	7 * 2	62-3550	Bushing - Reducer	6 2 1
42-1770	Decal	9 1 1	62-5550	Decal	7 8 1
44-2230	Coupling - Rubber	3 5 2	62-5550	Decal - Auger Sideplate	2 25 2
51-0460	Gasket	3 31 2	62-5780	Kit - Auger Extension	9 * 1
54-9770	Wire - Chute	4 17 1	63-2380	Decal - Auger Danger	1 2 2
56-5310	Weight - Wheel	8 1 2	63-3510	Decal - Chute Rotation	5 7 1
56-6630	Tire Chain Kit	7 * 1	67-3740	Decal - Discharge Danger	4 7 2
57-3300	Auger RH	3 1 1	74-2080	Decal - Proline	2 40 1
57-3370	Auger LH	3 * 1	78-0800	Skid	2 27 2
57-3480	Gear Box Assembly	3 * 1	79-6670	Blade - Scraper	2 31 1
57-3490	Shaft - Impeller	3 20 1	92-6335	Chute - Upper	4 6 1
57-3500	Shaft - Auger	3 23 1	92-8019	Decal - Rear Weight	1 12 1
57-3510	Plate - Side	1 1 2	92-8652	Decal - Warning	1 3 1
57-3520	Bar - Extension	1 22 1	92-8660	Housing - Auger	1 4 1
57-3550	Plate - Skid Mount	1 24 2	232-45	Extension - Valve	8 2 2
57-3560	Plate - Extension LH	1 23 1	237-87	Seal	3 42 1
57-3570	Plate - Extension RH	1 5 1	2410-67	Plug	7 * 2
57-3640	Pulley - Drive	1 18 1	251-224	Bearing - Impeller	3 13 1
57-3650	Belt	1 17 1	251-229	Bearing - Flange	3 12 2
57-3710	Bar - Extension	1 6 1	251-231	Collar - Locking	3 10 1
57-9890	Bracket - Blade Support	2 34 2	252-71	Bearing - Thrust	3 30 2
61-4000	Hub	3 3 2	252-76	Bearing - Thrust	3 37 1
61-4090	Box - Weight	7 4 1	252-77	Washer - Thrust	3 36 1
61-4090	Weight Box Assembly	7 * 1	252-78	Washer - Thrust	3 38 1
61-4130	Cover - Weight Box	7 1 1	256-32	Bushing	3 32 1
61-4140	Bracket - Mount	7 6 1	256-237	Bushing	3 26 2
61-4870	Hose - Assembly	4 25 1	281-1	Plug - Pipe	3 28 1
61-4890	Knob	5 4 1	302-5	Fitting - Grease	4 27 1
61-4900	Rod - Chute Control	5 1 1	321-4	Screw - Hex. Hd.	5 8 2
61-4910	Bracket - Bottom	5 10 1	321-4	Screw - Hex. Hd.	2 29 8
61-4920	Bracket - Top	5 6 1	321-9	Screw - Hex. Hd.	3 6 4
61-4930	Bracket - Worm Gear	4 24 1	322-3	Screw - Hex. Hd.	2 35 2
61-4940	Coupler	5 12 1	322-4	Screw - Hex. Hd.	9 4 4
61-4940	Coupler	4 22 1	322-5	Screw - Hex. Hd.	2 26 16
61-4950	Shaft - Worm Gear	4 19 1	322-6	Screw	2 42 2
61-8520	Shaft - Flexible	4 26 1	322-14	Screw - Hex. Hd.	3 22 2

\*Not Illustrated

# TORO PART NUMBER INDEX (Cont.)

3316-321

Part No.	Description	Pg. Ref.		Part No.	Description	Pg. Ref.	
		No.	Qty.			No.	Qty.
322-19	Screw - Hex. Hd.	8	4	3256-57	Washer	1	21
323-4	Screw - Hex. Hd.	1	10	3257-5	Key - Woodruff	1	16
323-6	Screw -	4	16	3257-23	Key - Woodruff	3	43
323-6	Screw - Hex. Hd.	1	13	3257-33	Key - Woodruff	3	24
323-12	Screw - Hex. Hd.	1	7	3272-10	Pin - Cotter	5	3
325-5	Screw - Hex. Hd.	7	5	3272-10	Pin - Cotter	4	14
3229-25	Bolt - Carriage	2	33	3290-320	Cap - Push	5	5
3230-1	Bolt - Carriage	3	14	3290-326	Nut - Push	4	8
3230-2	Bolt - Carriage	2	36	3290-340	Washer - Belleville	4	12
3230-18	Bolt - Carriage	4	18	3296-16	Nut - Lock	3	8
3231-27	Bolt - Carriage	4	9	3296-16	Nut - Lock	2	32
3235-22	Screw - Hex. Hd.	2	38	3296-25	Nut - Lock	7	3
3241-5	Screw - Set	3	4	3296-29	Nut - Lock	4	1
3242-4	Screw - Set	3	2	3296-29	Nut - Lock	9	5
3242-4	Screw - Set	1	19	3296-29	Nut - Lock	3	11
3245-32	Screw - Set	3	9	3296-29	Nut - Lock	1	14
3253-4	Washer - Lock	8	3	3296-39	Nut - Lock	1	8
3253-7	Washer - Lock	7	7	3296-39	Nut - Lock	4	13
3254-6	Washer - Lock	1	11	32103-2	Nut - Wing	7	2
3256-2	Washer	9	3	32120-72	Ring - Retaining	3	33
3256-22	Washer	2	39	32121-50	Pin - Roll	5	9
3256-23	Washer	4	2	32121-50	Pin - Roll	4	20
3256-23	Washer	2	37	32144-41	Screw - Thread Forming	3	40
3256-24	Washer - Flat	5	2	353-955	Nut - Lock	5	11
3256-24	Washer - Flat	4	15	353-955	Nut - Lock	4	23

\*Not Illustrated

