



Engine Replacement

2004 and Newer Mid-Duty Workman Utility Vehicle

Model No. 117-2714

Installation Instructions

On replacement engines with Toro parts numbers 112-3133 and 115-7821, the oil dipstick assembly, the fuel pump and the oil filter base with the oil pressure switch must be removed from the old engine and then installed on the new engine. On the replacement engine Toro part number 112-2920 no components need to be exchanged.

Refer to your Toro Operator's Manual, the Toro Service Manual and the Briggs and Stratton Service Manual for information on engine and component replacement and adjustment.

1. Remove the dipstick assembly from the old engine (Figure 1).

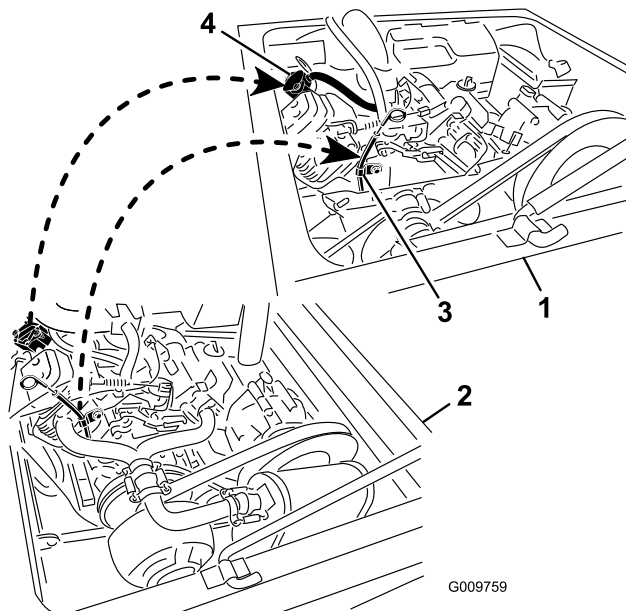


Figure 1

- | | |
|---------------|----------------------|
| 1. Old engine | 3. Dipstick assembly |
| 2. New engine | 4. Fuel pump |

2. Remove the dipstick assembly from the new engine (Figure 1).
3. Install the old dipstick assembly to the new engine (Figure 1).
4. Remove the fuel pump from the old engine (Figure 1)
5. Remove the fuel pump from the new engine (Figure 1).
6. Install the old fuel pump to the new engine (Figure 1).

7. Remove the oil filter base/oil pressure switch from the old engine (Figure 2). The gasket does not need to be removed unless it is stuck to the oil filter base.

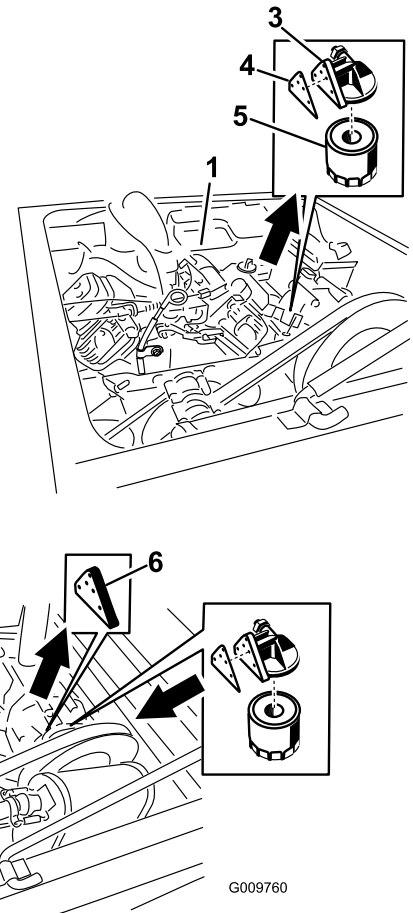


Figure 2

- | | |
|--|-----------------------|
| 1. Old engine | 4. Gasket |
| 2. New engine | 5. Oil filter |
| 3. Oil filter base/oil pressure switch | 6. Oil filter adapter |

8. Remove the oil filter adapter from the new engine (Figure 2). The gasket does not need to be removed unless it is stuck to the oil filter adapter.
9. Install the oil filter base/oil pressure switch to the new engine (Figure 2). Use the gasket mounted on the new engine.
10. Connect the wire to the oil pressure switch on the oil filter base.