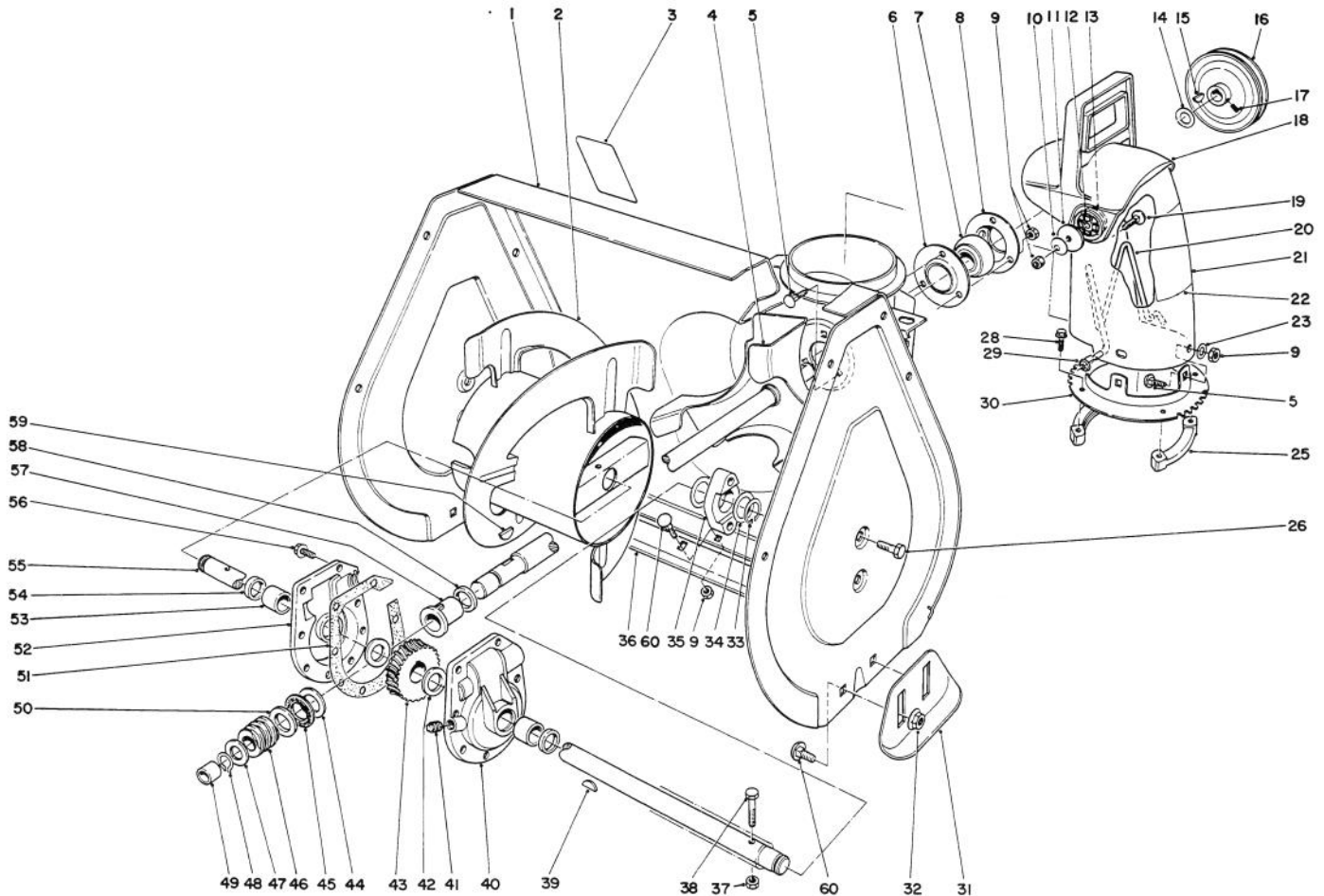




MODEL NO. 38052-490001 & UP
MODEL NO. 38054-490001 & UP

PARTS CATALOG

521 SNOWTHROWER



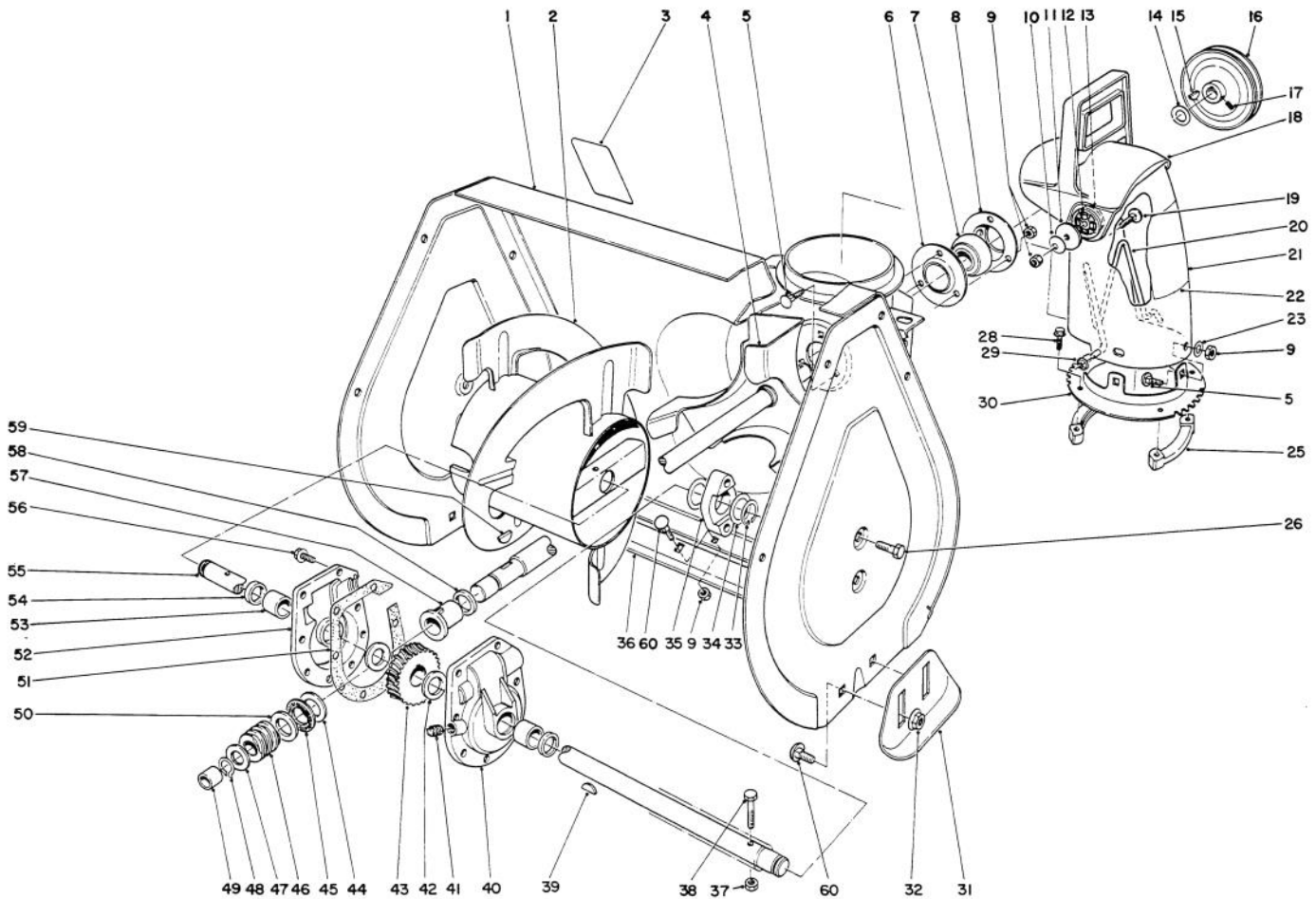
C-0031

AUGER ASSEMBLY

Ref. No.	Part No.	Description	No. Used
1	11-5269	Housing - Auger (Incl. ref. #3)	1
2	39-1180	Auger - R.H.	1
*	39-1190	Auger - L.H.	1
3	53-7670	Decal - Auger Warning	1
4	37-6990	Shaft & Impeller	1
5	3230-18	Bolt - Carriage	6
6		Flange - Bearing Front	1
7	63-3450	Bearing - Ball	1
8		Flange - Bearing Rear	1
9	3296-29	Nut - Lock	13
10	3290-340	Washer - Belleville	2
11	3256-68	Washer - Flat	2
12	55-8950	Plate - Friction	2
13	20-4320	Washer - Rubber	2
14	3-0737	Washer	1
15	3257-23	Key	1

Ref. No.	Part No.	Description	No. Used
16	37-6890	Pulley	1
17	3242-4	Screw - Set	2
18	56-2680	Deflector	1
19	3230-22	Bolt - Carriage	2
20	56-2670	Chute - Wire	1
21	13-7979	Chute - Discharge (Incl. ref.# 22) Model 38052	1
*	12-8749	Chute - Discharge (Incl. ref.# 22) Model 38054	1
22	63-3740	Decal - Discharge Model 38052	1
*	63-3760	Decal - Discharge Model 38054	1
23	3256-23	Washer	3
25	37-6490	Retainer - Chute Ring	3
26	32144-70	Screw - Self Tapping	4

*Not Illustrated

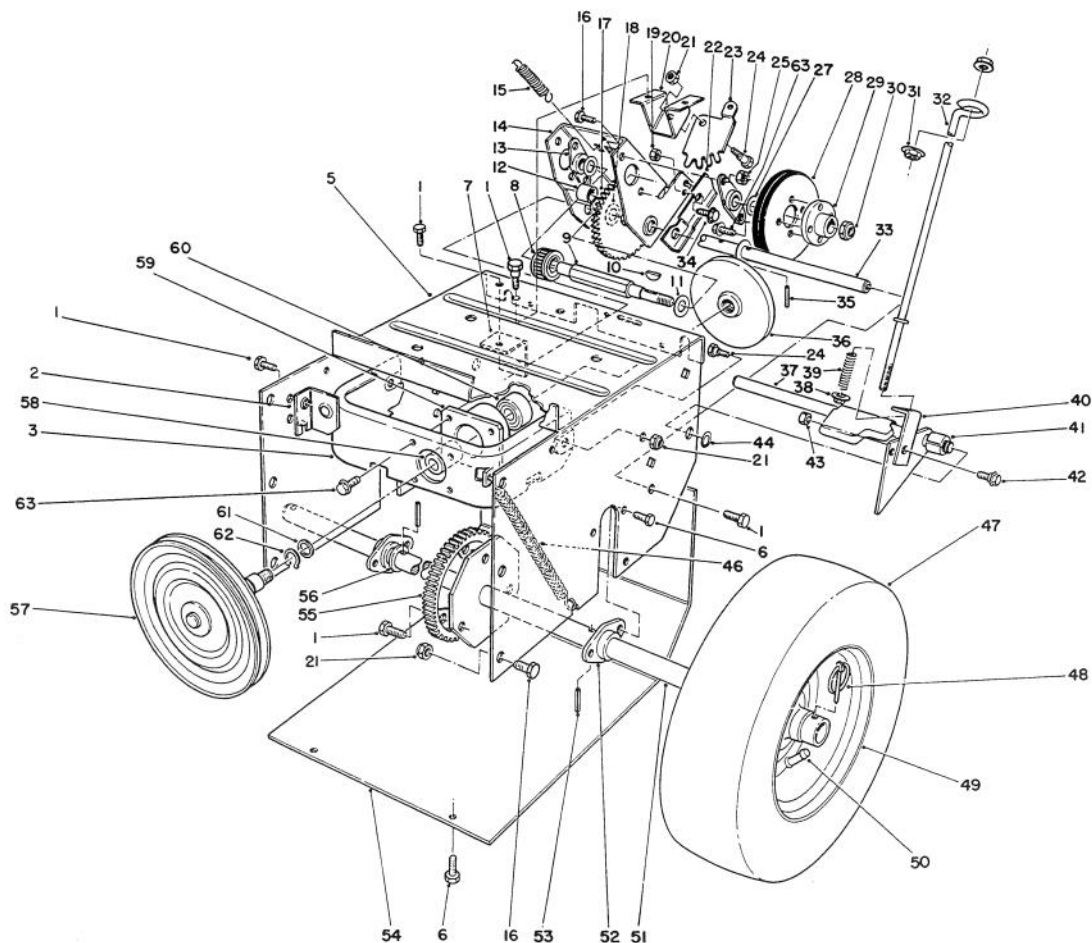


C-0031

AUGER ASSEMBLY (Continued)

Ref. No.	Part No.	Description	No. Used	Ref. No.	Part No.	Description	No. Used
28	27-0220	Screw - Self Tapping	6	46	5-7170	Gear - Worm	1
29	3290-326	Pushnut	1	47	3-8664	Washer	1
30	37-8941	Ring - Chute	1	48	32120-72	Ring - Retaining	1
31	40-8160	Skid	2	49	256-32	Bushing	1
32	32128-20	Nut - Flange	4	50	252-80	Washer - Thrust	1
33	32151-36	Ring - Retaining	2	51	51-0460	Gasket	1
34	5-1550	Washer - Thrust	4	52	14-2449	Gear Case R.H. (Incl. Ref. #53 & 54)	1
35	37-6550	Bearing - Auger	2	53	256-237	Bushing	2
36	39-1551	Blade - Scraper	1	54	7-0045	Seal - Oil	2
37	3296-42	Nut - Lock	2	55	37-6800	Shaft - Auger	1
38	321-10	Screw - Cap	2	56	32144-41	Screw - Self Tapping	8
39	3257-33	Key - Woodruff	1	57	37-6560	Bushing - Input	1
40	14-2459	Gear Case L.H. (Incl. Ref. #53 & 54)	1	58	237-87	Seal	1
41	281-1	Pipe - Plug	1	59	3257-23	Key - Woodruff	1
42	252-71	Bearing - Thrust	2	60	3230-1	Bolt - Carriage	9
43	5-7180	Gear	1	*	37-6960	Gear Case Assembly	1
44	257-3	Washer - Thrust	1	*	12-8789	Bearing Assembly (Incl. Ref. #6-8)	1
45	252-76	Bearing - Needle, Thrust	1				

*Not Illustrated

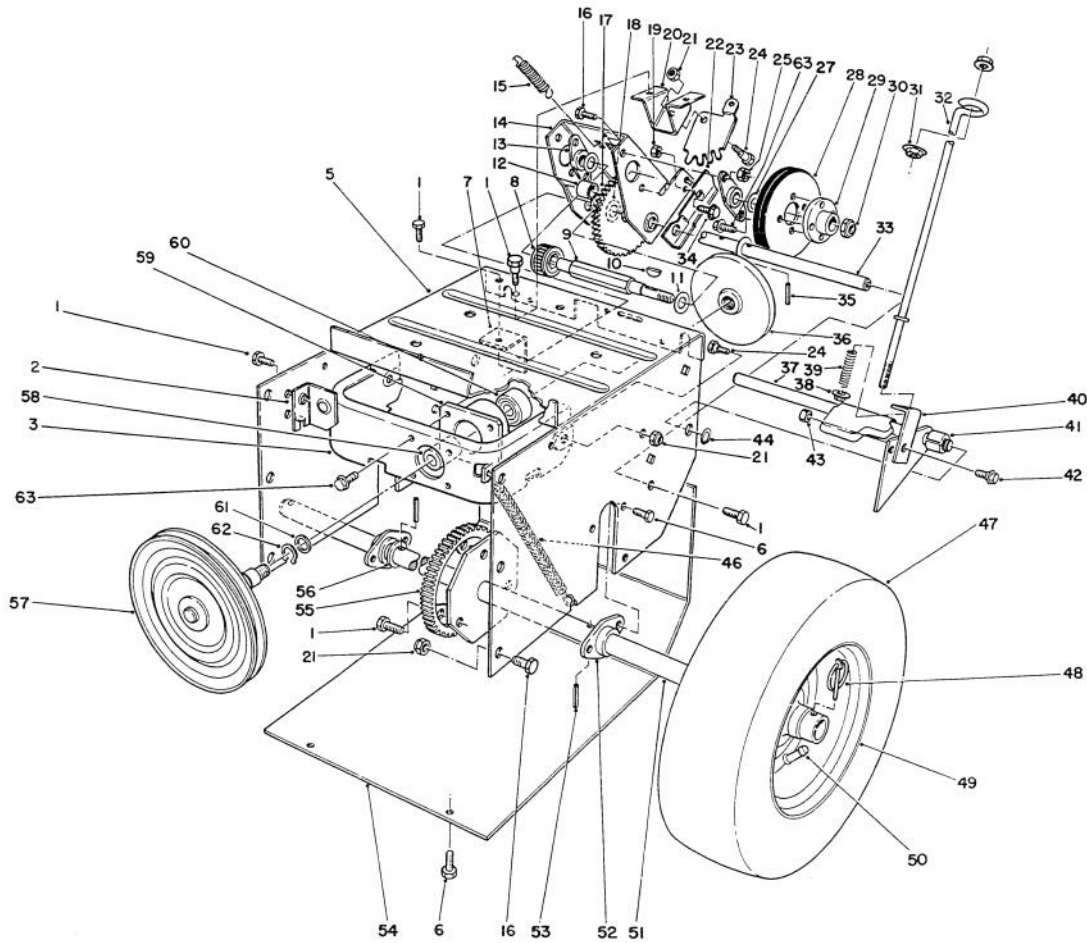


C-1277

TRACTION ASSEMBLY

Ref. No.	Part No.	Description	No. Used
1	32144-70	Screw - Self Tap.Hex. Hd.	9
2	66-6790	Mount - Clutch Rod Front	1
3	88-0550	Frame - Friction Plate	1
5	37-8900	Frame - Traction	1
6	32144-4	Screw - Self Tap.Hex. Hd.	8
7	37-9070	Mount - Clutch Rod Rear	1
8	37-6500	Gear - Sliding	1
9	37-6780	Shaft - Hex	1
10	3257-24	Key	1
11	5-7570	Washer - Thrust	2
12	256-86	Bushing	1
13	20-1620	Bearing - Friction Wheel	2
14	39-1230	Bracket - Sliding	1
15	37-8880	Spring - Traction Engage	1
16	322-2	Screw - Hex. Hd. Cap	10
17	37-9160	Intermediate Gear & Bushing (Incl. Ref. #12)	1
18	10-9280	Washer - Thrust	2
19	3296-16	Nut - Lock	1
20	37-8790	Mount - Quadrant Gear	1
21	3296-29	Nut - Lock	9
22	39-1250	Cam - Receiver	1
23	37-8800	Quadrant - Gear	1

Ref. No.	Part No.	Description	No. Used
24	37-8770	Bolt - Shoulder	3
25	3296-29	Nut - Lock	4
27	36-4790	Washer - Thrust	2
28	37-6570	Wheel - Friction	1
29	39-1520	Hub - Friction Wheel Mount	1
30	3296-48	Nut - Lock	1
31	32128-33	Nut - Flange	2
32	39-3060	Rod - Lower Traction	1
33	37-6760	Shaft - Pivot	1
34	321-4	Screw - Hex. Hd.	1
35	32121-45	Pin - Roll	2
36	38-0800	Plate - Friction	1
37	43-7310	Traction Engagement Assy.	1
38	32128-32	Nut - Flange	1
39	38-4520	Spring - Compression	1
40	38-4490	Bracket - Traction	1
41	40-9680	Spacer	1
42	40-8350	Screw - Shoulder	1
43	3296-42	Nut - Lock	1
44	32151-61	Ring - Retaining	1
46	37-8870	Spring - Friction Plate Frame	1
47	231-120	Tire	2
48	3290-243	Pin - Klik	2

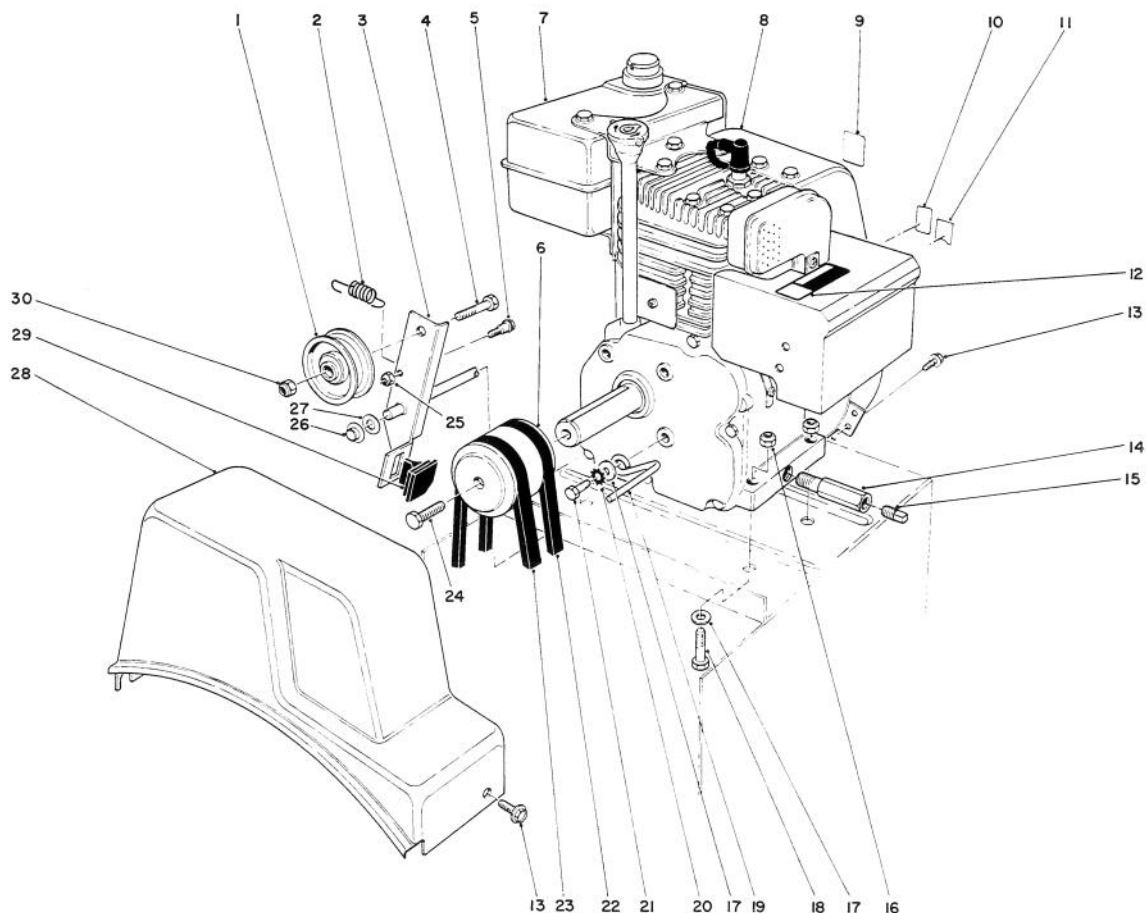


C-1277

TRACTION ASSEMBLY (Continued)

Ref. No.	Part No.	Description	No. Used
49	241-131	Rim	2
50	232-46	Tube	2
51	74-1350	Shaft - Axle	1
52	37-6850	Bearing - Axle	2
53	32121-31	Pin - Roll	2
54	37-6830	Cover - Bottom	1
55	37-6520	Gear - Axle	1
56	3-8664	Washer - Thrust	2

Ref. No.	Part No.	Description	No. Used
57	88-0850	Pulley & Shaft	1
58	256-322	Bushing	1
59	88-0560	Hub - Frame	1
60	38-7820	Bearing	1
61	252-80	Washer - Thrust	1
62	32151-103	Ring - Snap	1
63	12-3270	Screw - Tapping	8



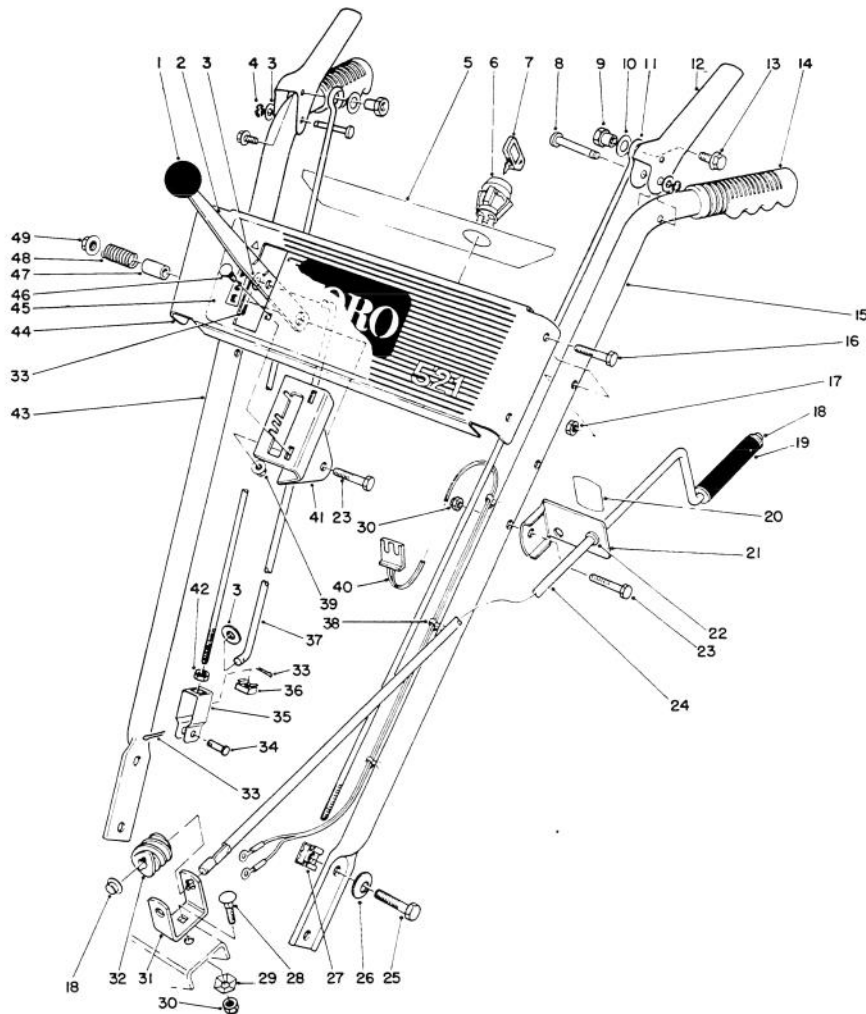
C-0038

ENGINE ASSEMBLY

Ref. No.	Part No.	Description	No. Used
1	3-4244	Idler Pulley	1
2	53-7570	Spring - Auger Disengage	1
3	14-7959	Auger Clutch (Incl. ref. #29)	1
4	323-29	Screw - Cap	1
5	42-3560	Bolt - Shoulder	1
6	43-7370	Engine Pulley	1
8		Engine	1
9	62-5760	Decal - Primer	1
10	63-2450	Decal - Throttle	1
11	39-3850	Decal - Choke (Model 38052)	1
*	63-2410	Decal - Choke (Model 38054)	1
12	66-6840	Decal - Hot Surface Warning (Model 38052)	1
*	63-2310	Decal - Hot Surface Warning (Model 38054)	1

Ref. No.	Part No.	Description	No. Used
13	32144-4	Screw - Self Tapping	3
14	49-3040	Tube - Drain	1
15	281-7	Plug - Pipe	1
16	3296-29	Nut - Lock	4
17	3256-23	Washer - Flat	5
18	322-7	Screw - Cap	4
19	37-8990	Retainer - Belt	1
20	3255-8	Washer - Lock Ext. Tooth	1
21	3210-3	Screw - Cap	1
22	37-9090	V-Belt - Traction	1
23	37-9080	V-Belt - Auger	1
24	43-7290	Screw - Special	1
25	3296-56	Nut - Lock	1
26	3290-320	Nut - Push On	1
27	3256-24	Washer - Flat	1
28	37-6900	Cover - Belt	1
29	66-8060	Molded Brake Assembly	1
30	3296-59	Nut - Lock	1

*Not Illustrated



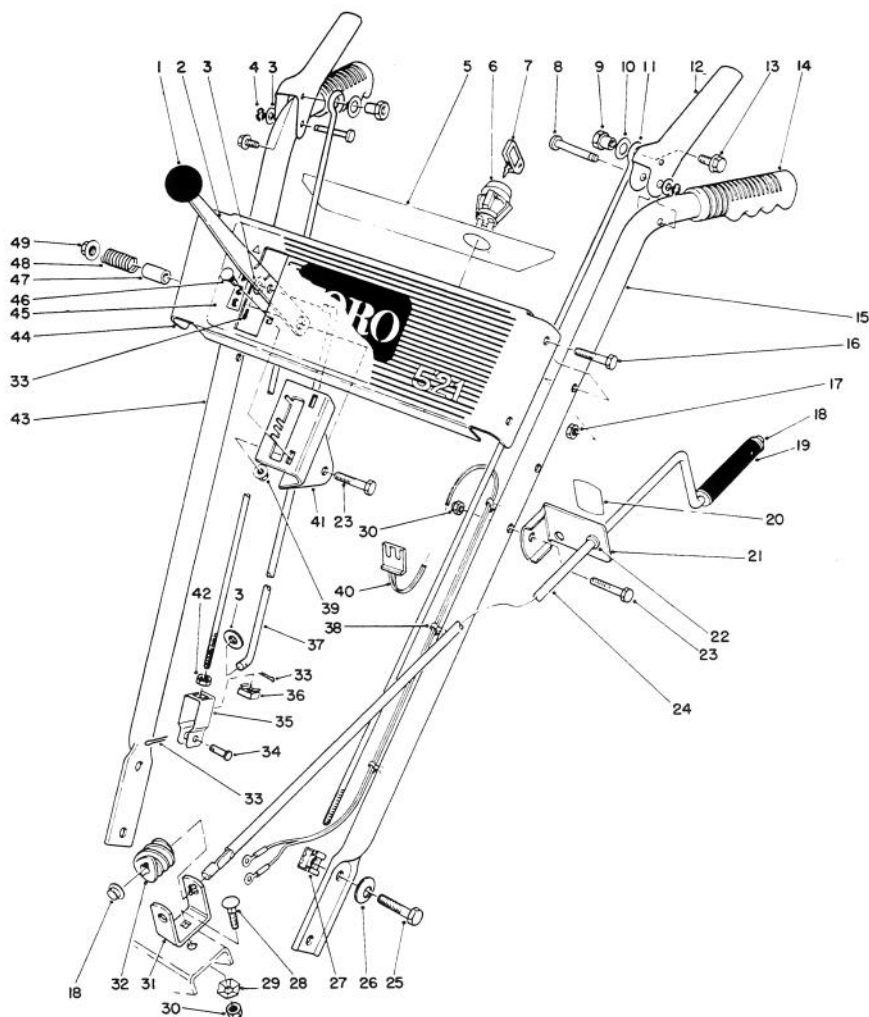
C-0039

HANDLE ASSEMBLY

Ref. No.	Part No.	Description	No. Used
1	233-21	Knob	1
2	37-8820	Selector - Speed	1
3	3256-23	Washer	4
4	32151-73	Ring - Clip	2
5	66-6830	Decal - Escutcheon Back (Model 38052)	1
*	66-6880	Decal - Escutcheon Back (Model 38054)	1
6	40-5940	Switch - On/Off	1
7	63-8360	Key - Ignition	1
8	52-5600	Pin - Control Lever	2
9	47-4990	Post - Linkage Mounting	2
10	3256-24	Washer	2
11	52-5590	Link - Upper	2
12	63-3640	Handle - Control	2
13	3234-13	Screw - Hex. Flange Hd.	2
14	74-1360	Grip - Handle	2
15	52-5571	Handle - Left (Model 38052)	1
*	52-5570	Handle - Left (Model 38054)	1
16	321-9	Screw - Hex. Hd	4
17	3296-42	Nut - Lock	4
18	3290-320	Nut - Push	2
19	66-6540	Grip - Rod	1
20	63-3510	Decal - Chute Direction	1

Ref. No.	Part No.	Description	No. Used
21	12-7739	Bracket - Chute Control (Incl. Ref.# 20 & 22)	1
22	256-249	Nyliner	1
23	322-7	Screw - Hex. Hd.	2
24	40-8270	Rod - Chute Control	1
25	322-2	Screw - Hex. Hd. Cap	4
26	3290-456	Washer - Belleville	4
27	3290-196	Retainer - Nut	4
28	3230-22	Bolt - Carriage	1
29	3290-238	Washer - Pyramidal	1
30	3296-29	Nut - Lock	2
31	40-8280	Bracket - Chute Worm	1
32	40-8250	Gear - Worm	1
33	3272-4	Pin - Cotter	3
34	283-3	Pin - Clevis	1
35	39-3080	Clevis	1
36	32115-5	Retainer - Nut	1
37	39-7570	Rod - Speed Selector	1
38	17-9120	Mount - Wire	3
39	32128-33	Nut - Flange Lock	2
40	43-7390	Wire Harness Assembly (Incl. Ref.# 38)	1
41	39-1280	Mount - Speed Selector	1
42	3218-1	Nut - Jam	1

*Not Illustrated



C-0039

HANDLE ASSEMBLY (Cont.)

Ref. No.	Part No.	Description	No. Used
43	52-5561	Handle - Right (Model 38052)	1
*	52-5560	Handle - Right (Model 38054)	1
44	43-7360	Panel - Escutcheon	1
45	66-6560	Decal - 521	1

Ref. No.	Part No.	Description	No. Used
46	3229-11	Bolt - Carriage	2
47	40-8130	Spacer - Speed Selector	1
48	37-9150	Spring	1
49	32128-13	Nut - Flange Lock	1
*	3290-378	Cable Tie	2

*Not Illustrated

ENGINE TECUMSEH MODEL HSSK50-67259M

Ref. No.	Part No.	Description	No. Used	Ref. No.	Part No.	Description	No. Used
1	33674B	Cylinder Assembly (Incl. Ref. #2, 20 & 72)	1			(Incl. Ref. #81)	1
2	26727	Pin - Dowel	2	83	30588A	Spool - Governor	1
14	28277	Washer - Flat	1	86	650488	Screw - Hex Hd.	7
15	31334	Rod - Governor	1	89	610961	Key - Flywheel	1
16	31510	Lever - Governor	1	90	611081	Flywheel - w/Ring Gear	1
17	31335	Clamp - Governor Lever	1	92	650815	Washer - Belleville	1
18	650548	Screw - Hex Washer Hd.	1	93	650863	Nut - Flywheel	1
19	31426	Spring - Extension	1	100	34443A	Solid State Assembly	1
20	32600	Seal - Oil	1	101	610118	Cover - Spark Plug	1
25	33342†	Baffle - Blower Housing	1	102	650872	Stud	2
25A	650139†	Screw - Fil Hd.	2	103	650814	Screw - Torx	2
26	650561	Screw - Hex Washer Hd.	2	110	35557	Wire - Ground	1
26A				119	*36443	Gasket - Cylinder Head	1
30	34740	Crankshaft Assembly	1	120	36441	Head - Cylinder (Incl. Ref. #131)	1
40	34535	Piston - Pin & Ring Assy. Std. (Incl. Ref. #41-43)	1	125	29313C	Valve - Exhaust Standard (Incl. ref. #151)	1
	34536	Piston - Pin & Ring Assy .010 oversize (Incl. Ref. #41-43)	1		29315C	Valve - Exhaust 1/32" oversize (Incl. Ref. #151)	1
	34537	Piston - Pin & Ring Assy .020 oversize (Incl. Ref. #41-43)	1	126	32644A	Valve - Intake Standard (Incl. Ref. #151)	1
41	33562B	Piston & Pin Assy. Std. (Incl. Ref. #43)	1		32645A	Valve - Intake 1/32" oversize (Incl. Ref. #151)	1
	33563B	Piston & Pin Assembly .010 oversize (Incl. Ref. #43)	1	127	650691	Washer - Flat	1
	33564B	Piston & Pin Assembly .020 oversize (Incl. Ref. #43)	1	129	650818	Screw - Special	1
42	33567	Ring Set - Piston Std.	1	130	6021A	Screw - Hex Flange Hd.	2
	33568	Ring Set - Piston .010 oversize	1	131	650694A	Screw - Hex Flange Hd.	5
	33569	Ring Set - Piston .020 oversize	1	135	35395	Plug - Spark (Champion RJ-19LM or equivalent)	1
43	20381	Ring - Piston Pin Retaining	2	150	31672	Spring - Valve	2
45	32875	Connecting Rod Assembly (Incl. Ref. #46 & 49)	1	151	31673	Cap - Valve Spring	2
46	32610A	Bolt - Connecting Rod	2	169	*27234A	Gasket - Valve Cover	2
48	27241	Lifter - Valve	2	170	27666	Body - Valve Cover	1
49	32654	Dipper - Oil	1	171	31410	Element - Valve Body	1
50	33158	Camshaft	1	172	34146	Cover - Breather	1
60	29745	Extension - Blower	1	173	35350	Tube - Breather	1
61	34126	Bracket - Grommet Mtg.	1	174	30200	Screw - Hex Hd.	2
62	650760	Screw - Pan Hd.	1	178	29752	Nut & Lockwasher	2
63	28545	Grommet - Plastic	1	181	650870	Screw - Hex Hd.	1
64	30063	Screw - Hex Washer Hd.	1	182	6201	Screw - Hex Hd.	1
64A	8345	Washer - Flat	1	183	34583	Bracket - Choke	1
65	650128	Screw - Hex Hd.	1	184	*26756	Gasket - Carburetor	1
69	*27677A	Gasket - Cylinder Cover	1	185	33691	Pipe - Intake	1
70	34674C	Cover - Cylinder (Incl. Ref. #75 & 80)	1	186	32698	Link - Governor to Throttle	1
72	27642	Plug - Pipe	2	200	33858A†	Control Assembly (Incl. Ref. # 25A, 25B, 203, 204 & 206)	1
75	27897	Seal - Oil	1	203	31342	Spring - Compression	1
80	30574A	Shaft - Governor	1	204	650549	Screw - Fil. Hd.	1
81	30590A	Washer - Flat	1	206	610973	Terminal Assembly	1
82	30591	Gear - Governor	1	209	650139	Screw	2
				209A	30322	Lock Nut	2
				215	35440	Knob - Speed Control	1
				219	34582	Rod - Choke	1
				220	35438	Knob - Choke Control	1
				222	28820	Screw - Fil. Hd.	2
				223	650664	Screw - Fil Hd.	2
				224	*33673A	Gasket - Intake	1

* Indicated Parts included in Gasket Set ref.#400

† In original production the speed control assembly is riveted to the blower housing baffle.

Replacement Speed Control Assembly Includes screw and nuts. Baffle has threaded holes

ENGINE TECUMSEH MODEL HSSK50-67259M (Cont.)

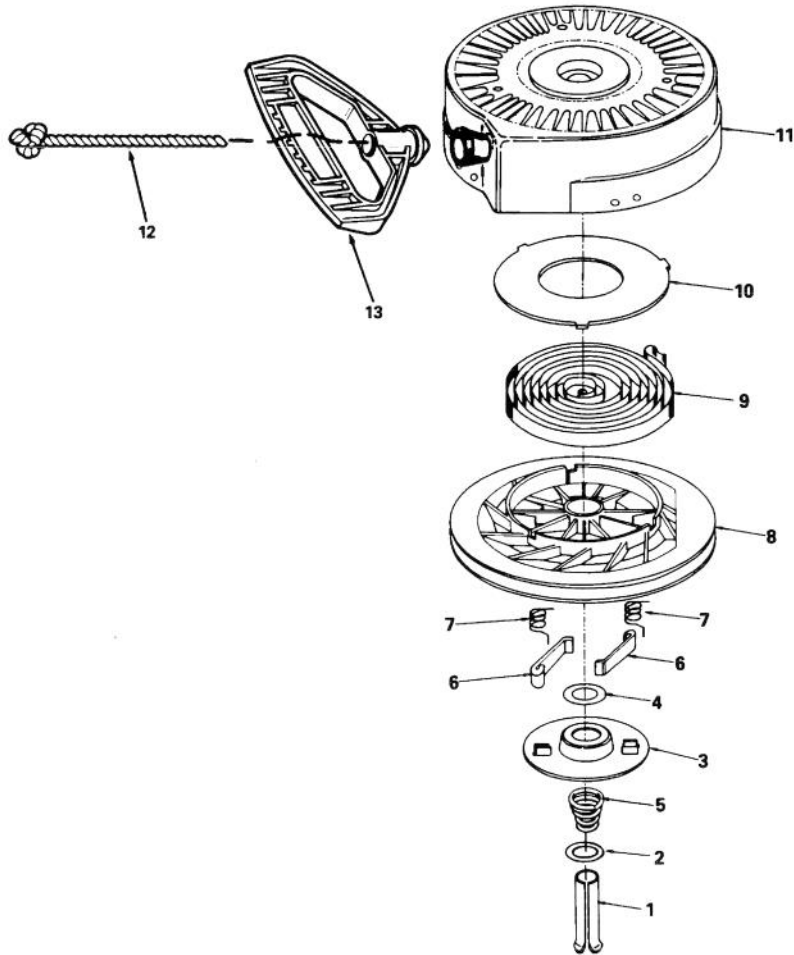
Ref. No.	Part No.	Description	No. Used
260	35656A	Housing - Blower	1
261	29212	Screw - Hex Hd.	2
267	34212	Bracket - Hold Down	1
268	30200	Screw - Hex Washers Hd.	1
272	650735	Screw - Hex Hd,	1
274	*33670A	Gasket - Exhaust	1
275	35771	Muffler (Incl. Ref.# 274)	1
277	650327	Screw - Fil. Hd.	2
285	34694	Cup - Starter	1
287	650926	Screw - Hex Washer Hd.	2
290	29774	Line - Fuel	1
291	30705	Line - Fuel	1
292	26460	Clamp - Fuel Line	4
295	35857	Valve - Shut-Off	1
298	650665	Screw - Hex Washer Hd.	2
300	35584	Tank Assembly - Fuel (Incl. Ref. #292 & 301)	1
301	35355	Cap - Fuel Tank	1
305	35554	Tube Assy. - Oil Fill	1
307	35499	"O" Ring	1
308	35539	Clip - Oil Fill	1

Ref. No.	Part No.	Description	No. Used
310	35556	Dipstick	1
313	34080	Spacer - Flywheel Key	1
327	35392	Plug - Starter	1
335	35072	Cover - Carburetor	1
338	650257	Screw - Pan Hd.	2
340	36247	Plate - Fuel Tank	1
342	30063	Screw w/Belleville Washer	1
342A	650675	Washer - Flat	1
345	33344	Baffle - Heat	1
350	570682	Primer Assembly	1
351	32180C	Line - Primer	1
355	590574	Handle - Starter	1
364	33333	Carburetor Cover Bracket	1
365	650735	Screw	1
380	632107A	Carburetor (Incl. Ref. #184)	1
390	590646	Starter - Rewind	1
396	33290D	Electric Starter Kit (Optional)	1
400	36444	Gasket Set	1
420	730226	Oil - 4 Cycle SAE5W30 (Quart)	1

* Indicated Parts included in Gasket Set ref.#400

† In original production the speed control assembly is riveted to the blower housing baffle.

Replacement Speed Control Assembly Includes screw and nuts. Baffle has threaded holes



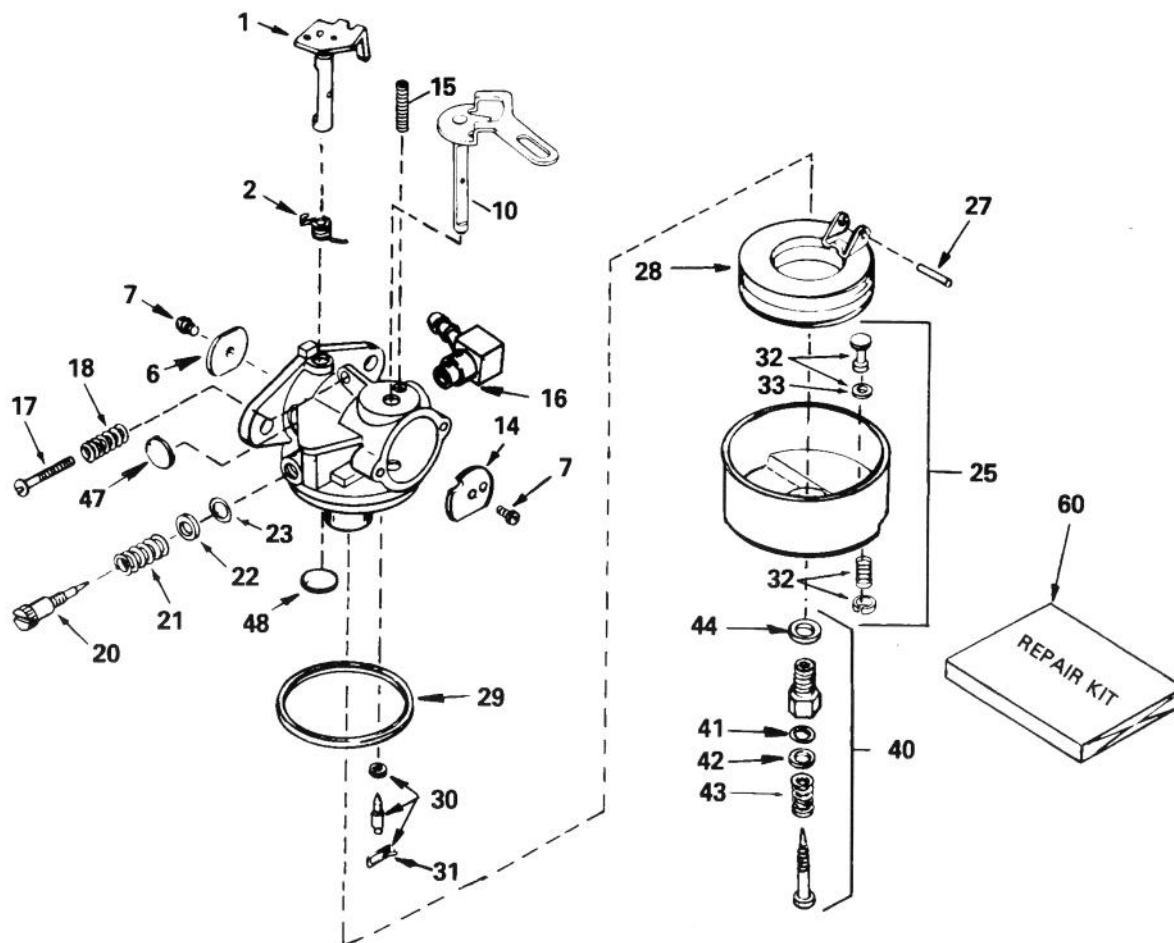
C-1758

REWIND STARTER NO. 590646

Ref. No.	Part No.	Description	No. Used
1	590599A	Pin - Spring (Incl. Ref. #4)	1
2	590600	Washer	1
3	590615	Retainer	1
4	590601	Washer	1
5	590598	Spring - Brake	1
6	590616	Dog - Starter	2
7	590617	Spring - Dog	2
8	590645A	Pulley	1

Ref. No.	Part No.	Description	No. Used
9	590619	Spring - Rewind	1
10	590620	Cover - Spring	1
11	590647	Housing Assembly	1
12	590535	Rope - 9/64" dia. x 98" long	1
13	590574	Handle - Mitten Grip (Not included with Starter)	1
*	590646	Starter - Rewind	1

* Not Illustrated



CARBURETOR NO. 632107A

C-1759

Ref. No.	Part No.	Description	No. Used
1	631615	Shaft & Lever Assembly	1
2	631767	Spring - Throttle Return	1
6	631036	Shutter - Throttle	1
7	650506	Screw	2
10	632108	Shaft & Lever Assy. (Choke)	1
14	631815	Shutter - Choke	1
15	630735	Spring - Choke Stop	1
16	631807	Fitting - Fuel Inlet	1
17	650417	Screw - Idle	1
18	630766	Spring - Idle Screw	1
20	631838†	Screw - Idle	1
21	630766	Spring - Idle Tension	1
22	630739	Washer - Flat	1
23	630740†	"O" Ring	1
25	631951	Bowl - Assembly (Incl. Ref. #32 & 33)	1
27	631024†	Shaft - Float	1
28	632019	Float - Carburetor	1
29	631028†	Gasket - Bowl-to-Body	1
30	631021†	Inlet Needle - Seat & Clip (Incl. Ref. #31)	1

Ref. No.	Part No.	Description	No. Used
31	631022	Clip - Inlet Needle	1
32	27136A	Drain Assembly - Bowl (Incl. Ref. #33)	1
33	27554	Gasket - Drain Plunger	1
40	31839†	Screw Adjustment Assembly (Incl. Ref. #41-44)	1
41	630740†	"O" Ring - High Speed Mixture Screw	1
42	630739	Washer - Flat High Speed Mixture Screw	1
43	630738	Spring	1
44	27110†	Washer - Bowl Nut	1
47	630748†	Plug - Welch	1
48	631027†	Plug - Welch	1
60	31840	Repair Kit (Incl. Items Marked †)	1
*	632107A	Carburetor (Incl. Ref. #1-60)	1

* Not Illustrated

TORO PART NUMBER INDEX

Part No.	Description	Pg. No.	Ref. No.	Qty.	Part No.	Description	Pg. No.	Ref. No.	Qty.
3-0737	Washer	1	14	1	39-3060	Rod - Lower Traction	3	32	1
3-4244	Idler Pulley	5	1	1	39-3080	Clevis	6	35	1
3-8664	Washer	2	47	1	39-3850	Decal - Choke	5	11	1
3-8664	Washer - Thrust	4	56	2	39-7570	Rod - Speed Selector	6	37	1
5-1550	Washer - Thrust	2	34	4	40-5940	Switch - On/Off	6	6	1
5-7170	Gear - Worm	2	46	1	40-8130	Spacer - Speed Selector	7	47	1
5-7180	Gear	2	43	1	40-8160	Skid	2	31	2
5-7570	Washer - Thrust	3	11	2	40-8250	Gear - Worm	6	32	1
7-0045	Seal - Oil	2	54	2	40-8270	Rod - Chute Control	6	24	1
10-9280	Washer - Thrust	3	18	2	40-8280	Bracket - Chute Worm	6	31	1
11-5269	Housing - Auger	1	1	1	40-8350	Screw - Shoulder	3	42	1
12-3270	Screw - Tapping	4	63	8	40-9680	Spacer	3	41	1
12-7739	Bracket - Chute Control	6	21	1	42-3560	Bolt - Shoulder	5	5	1
12-8749	Chute - Discharge	1	*	1	43-7290	Screw - Special	5	24	1
12-8789	Bearing Assembly	2	*	1	43-7310	Traction Engagement Assy.	3	37	1
13-7979	Chute - Discharge	1	21	1	43-7360	Panel - Escutcheon	7	44	1
14-2449	Gear Case R.H.	2	52	1	43-7370	Engine Pulley	5	6	1
14-2459	Gear Case L.H.	2	40	1	43-7390	Wire Harness Assembly	6	40	1
14-7959	Auger Clutch	5	3	1	47-4990	Post - Linkage Mounting	6	9	2
17-9120	Mount - Wire	6	38	3	49-3040	Tube - Drain	5	14	1
20-1620	Bearing - Friction Wheel	3	13	2	51-0460	Gasket	2	51	1
20-4320	Washer - Rubber	1	13	2	52-5560	Handle - Right	7	*	1
27-0220	Screw - Self Tapping	2	28	6	52-5561	Handle - Right	7	43	1
36-4790	Washer - Thrust	3	27	2	52-5570	Handle - Left (Model 38054)	6	*	1
37-6490	Retainer - Chute Ring	1	25	3	52-5571	Handle - Left (Model 38052)	6	15	1
37-6500	Gear - Sliding	3	8	1	52-5590	Link - Upper	6	11	2
37-6520	Gear - Axle	4	55	1	52-5600	Pin - Control Lever	6	8	2
37-6550	Bearing - Auger	2	35	2	53-7570	Spring - Auger Disengage	5	2	1
37-6560	Bushing - Input	2	57	1	53-7670	Decal - Auger Warning	1	3	1
37-6570	Wheel - Friction	3	28	1	55-8950	Plate - Friction	1	12	2
37-6760	Shaft - Pivot	3	33	1	56-2670	Chute - Wire	1	20	1
37-6780	Shaft - Hex	3	9	1	56-2680	Deflector	1	18	1
37-6800	Shaft - Auger	2	55	1	62-5760	Decal - Primer	5	9	1
37-6830	Cover - Bottom	4	54	1	63-2310	Decal - Hot Surface Warning	5	*	1
37-6850	Bearing - Axle	4	52	2	63-2410	Decal - Choke	5	*	1
37-6890	Pulley	1	16	1	63-2450	Decal - Throttle	5	10	1
37-6900	Cover - Belt	5	28	1	63-3450	Bearing - Ball	1	7	1
37-6960	Gear Case Assembly	2	*	1	63-3510	Decal - Chute Direction	6	20	1
37-6990	Shaft & Impeller	1	4	1	63-3640	Handle - Control	6	12	2
37-8770	Bolt - Shoulder	3	24	3	63-3740	Decal - Discharge	1	22	1
37-8790	Mount - Quadrant Gear	3	20	1	63-3760	Decal - Discharge	1	*	1
37-8800	Quadrant - Gear	3	23	1	63-8360	Key - Ignition	6	7	1
37-8820	Selector - Speed	6	2	1	66-6540	Grip - Rod	6	19	1
37-8870	Spring - Friction Plate Frame	3	46	1	66-6560	Decal - 521	7	45	1
37-8880	Spring - Traction Engage	3	15	1	66-6790	Mount - Clutch Rod Front	3	2	1
37-8900	Frame - Traction	3	5	1	66-6830	Decal - Escutcheon Back	6	5	1
37-8941	Ring - Chute	2	30	1	66-6840	Decal - Hot Surface Warning	5	12	1
37-8990	Retainer - Belt	5	19	1	66-6880	Decal - Escutcheon Back	6	*	1
37-9070	Mount - Clutch Rod Rear	3	7	1	66-8060	Molded Brake Assembly	5	29	1
37-9080	V-Belt - Auger	5	23	1	74-1350	Shaft - Axle	4	51	1
37-9090	V-Belt - Traction	5	22	1	74-1360	Grip - Handle	6	14	2
37-9150	Spring	7	48	1	88-0550	Frame - Friction Plate	3	3	1
37-9160	Intermediate Gear & Bushing	3	17	1	88-0560	Hub - Frame	4	59	1
38-0800	Plate - Friction	3	36	1	88-0850	Pulley & Shaft	4	57	1
38-4490	Bracket - Traction	3	40	1	231-120	Tire	3	47	2
38-4520	Spring - Compression	3	39	1	232-46	Tube	4	50	2
38-7820	Bearing	4	60	1	233-21	Knob	6	1	1
39-1180	Auger - R.H.	1	2	1	237-87	Seal	2	58	1
39-1190	Auger - L.H.	1	*	1	241-131	Rim	4	49	2
39-1230	Bracket - Sliding	3	14	1	252-71	Bearing - Thrust	2	42	2
39-1250	Cam - Receiver	3	22	1	252-76	Bearing - Needle, Thrust	2	45	1
39-1280	Mount - Speed Selector	6	41	1	252-80	Washer - Thrust	2	50	1
39-1520	Hub - Friction Wheel Mount	3	29	1	252-80	Washer - Thrust	4	61	1
39-1551	Blade - Scraper	2	36	1	256-32	Bushing	2	49	1

*Not Illustrated

TORO PART NUMBER INDEX (Cont.)

3316-131

Part No.	Description	Pg. Ref. No. No. Qty.	Part No.	Description	Pg. Ref. No. No. Qty.
256-86	Bushing	3 12 1	3290-326	Pushnut	2 29 1
256-237	Bushing	2 53 2	3290-340	Washer - Belleville	1 10 2
256-249	Nyliner	6 22 1	3290-378	Cable Tie	7 * 2
256-322	Bushing	4 58 1	3290-456	Washer - Belleville	6 26 4
257-3	Washer - Thrust	2 44 1	3296-16	Nut - Lock	3 19 1
281-1	Pipe - Plug	2 41 1	3296-29	Nut - Lock	5 16 4
281-7	Plug - Pipe	5 15 1	3296-29	Nut - Lock	3 21 9
283-3	Pin - Clevis	6 34 1	3296-29	Nut - Lock	3 25 4
321-4	Screw - Hex. Hd.	3 34 1	3296-29	Nut - Lock	6 30 2
321-9	Screw - Hex. Hd	6 16 4	3296-29	Nut - Lock	1 9 13
321-10	Screw - Cap	2 38 2	3296-42	Nut - Lock	6 17 4
322-2	Screw - Hex. Hd. Cap	3 16 10	3296-42	Nut - Lock	2 37 2
322-2	Screw - Hex. Hd. Cap	6 25 4	3296-42	Nut - Lock	3 43 1
322-7	Screw - Cap	5 18 4	3296-48	Nut - Lock	3 30 1
322-7	Screw - Hex. Hd.	6 23 2	3296-56	Nut - Lock	5 25 1
323-29	Screw - Cap	5 4 1	3296-59	Nut - Lock	5 30 1
3210-3	Screw - Cap	5 21 1	32115-5	Retainer - Nut	6 36 1
3218-1	Nut - Jam	6 42 1	32120-72	Ring - Retaining	2 48 1
3229-11	Bolt - Carriage	7 46 2	32121-31	Pin - Roll	4 53 2
3230-1	Bolt - Carriage	2 60 9	32121-45	Pin - Roll	3 35 2
3230-18	Bolt - Carriage	1 5 6	32128-13	Nut - Flange Lock	7 49 1
3230-22	Bolt - Carriage	1 19 2	32128-20	Nut - Flange	2 32 4
3230-22	Bolt - Carriage	6 28 1	32128-32	Nut - Flange	3 38 1
3234-13	Screw - Hex. Flange Hd.	6 13 2	32128-33	Nut - Flange	3 31 2
3242-4	Screw - Set	1 17 2	32128-33	Nut - Flange Lock	6 39 2
3255-8	Washer -Lock Ext. Tooth	5 20 1	32144-4	Screw - Self Tap.Hex. Hd.	3 6 8
3256-23	Washer	6 3 4	32144-4	Screw - Self Tapping	5 13 3
3256-23	Washer	1 23 3	32144-41	Screw - Self Tapping	2 56 8
3256-23	Washer - Flat	5 17 5	32144-70	Screw - Self Tap.Hex. Hd.	3 1 9
3256-24	Washer	6 10 2	32144-70	Screw - Self Tapping	1 26 4
3256-24	Washer - Flat	5 27 1	32151-36	Ring - Retaining	2 33 2
3256-68	Washer - Flat	1 11 2	32151-61	Ring - Retaining	3 44 1
3257-23	Key	1 15 1	32151-73	Ring - Clip	6 4 2
3257-23	Key - Woodruff	2 59 1	32151-103	Ring - Snap	4 62 1
3257-24	Key	3 10 1			
3257-33	Key - Woodruff	2 39 1			
3272-4	Pin - Cotter	6 33 3			
3290-196	Retainer - Nut	4 6 27			
3290-238	Washer - Pyramidal	6 29 1			
3290-243	Pin - Klik	3 48 2			
3290-320	Nut - Push	6 18 2			
3290-320	Nut - Push On	5 26 1			

OPTIONAL EQUIPMENT

110 Volt Electric Starter Kit	Part No. 23-3790
Drift Breaker	Part No. 37-7020
Light Kit	Part No. 54-9822
Tire Chain Kit	Part No. 56-2700
Snow Cab Kit	Part No. 88-0600

*Not Illustrated

