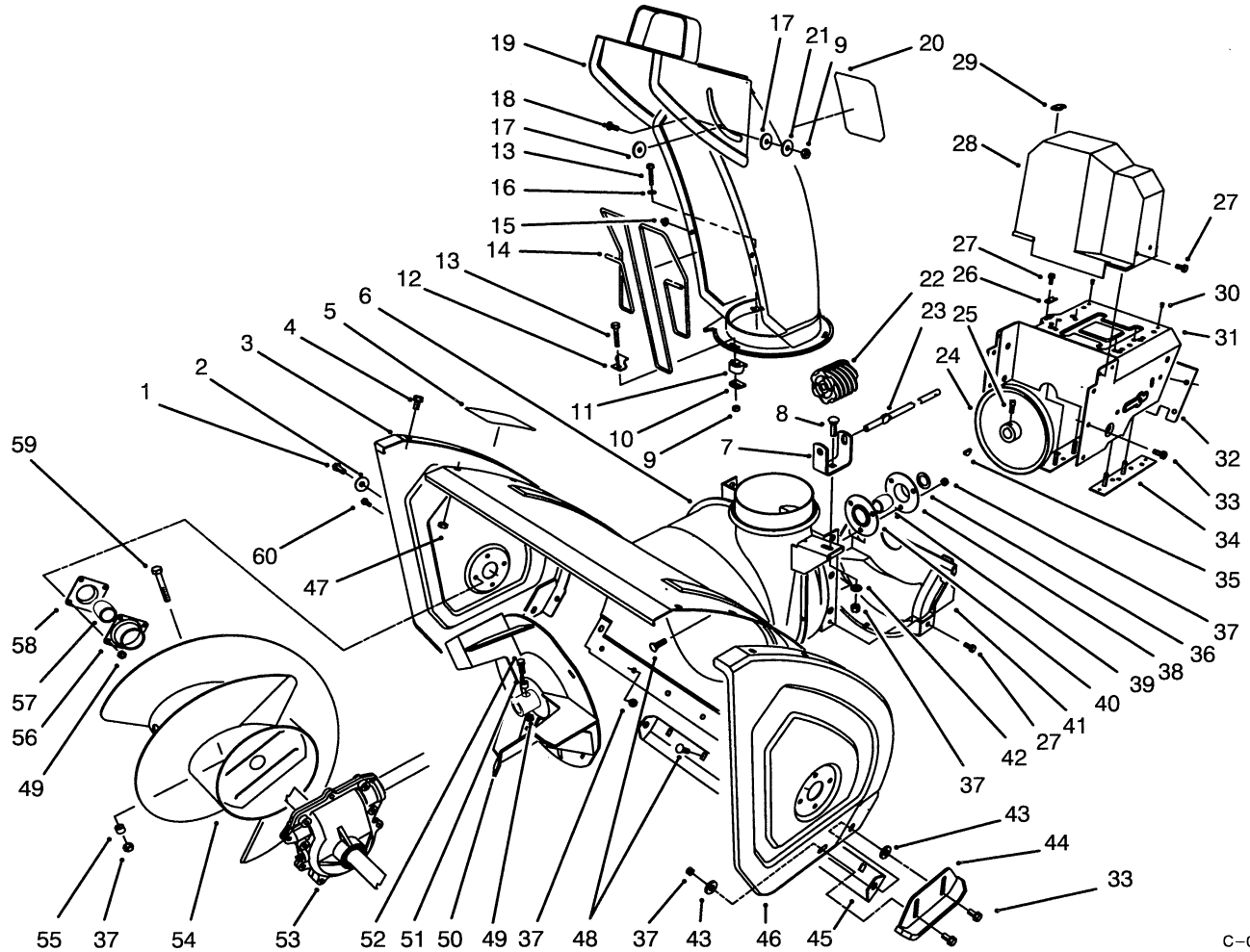




MODEL NO. 38570-4900001 & UP

**PARTS  
CATALOG**

**828 SNOWTHROWER**

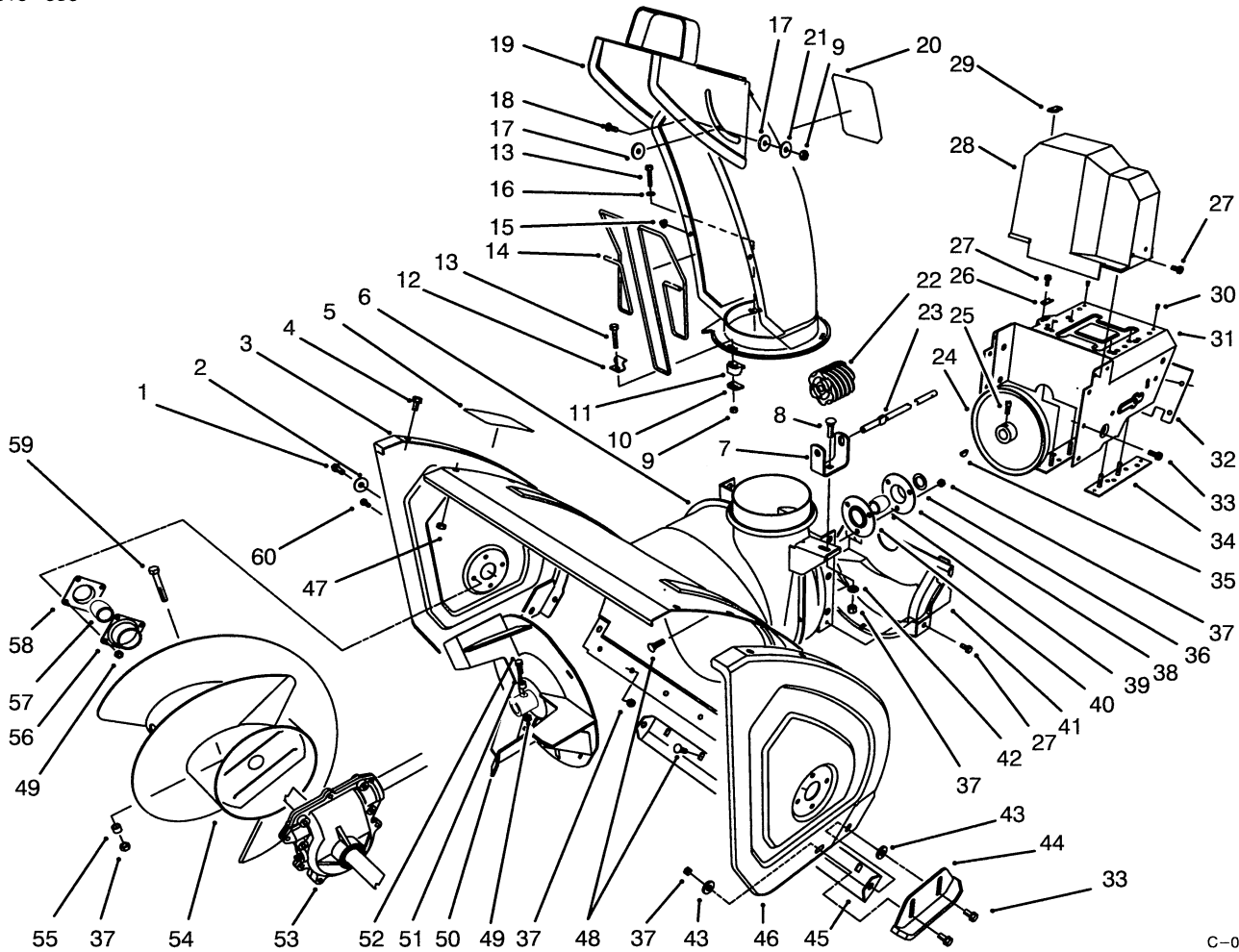


C-0045

**HOUSING & CHUTE ASSEMBLY**

Ref. No.	Part No.	Description	No. Used
1	323-6	Screw - Hex Hd.	2
2	3-0750	Washer - Retaining	2
3	66-7821	Plate - Side R.H.	1
4	3234-28	Screw - Hex Flange Hd.	12
5	53-7670	Decal - Danger Auger	1
6	62-0721	Housing - 28"	1
7	63-2180	Bracket - Gear	1
8	3230-2	Bolt - Carriage	1
9	3296-2	Nut - Lock	4
10	63-2670	Plate - Chute Retainer	3
11	62-1430	Retainer - Chute	3
12	63-3130	Clip - Chute Guard	1
13	3274-13	Screw - Machine	3
14	63-3020	Guard - Chute	1
15	3290-326	Nut - Push	2
16	3256-14	Washer - Flat	1

Ref. No.	Part No.	Description	No. Used
17	63-2900	Washer - Plastic	2
18	32122-32	Screw	1
19	62-0840	Chute Assembly	1
20	63-3740	Decal - Danger Chute	1
21	3256-61	Washer - Flat	1
22	62-0820	Gear - Worm	1
23	62-1720	Rod - Chute Gear	1
24	62-1300	Pulley - Impeller	1
25	3242-4	Screw - Set Sq. Hd.	2
26	63-2300	Retainer - Cable	1
27	32144-4	Screw - Hex Flange Hd.	6
28	63-2080	Cover - Belt (Upper)	1
29	63-3290	Cover - Cable	1
30	3269-23	Rivet	4
31	66-6981	Frame - Engine	1
32	62-1440	Cover - Engine Frame	1



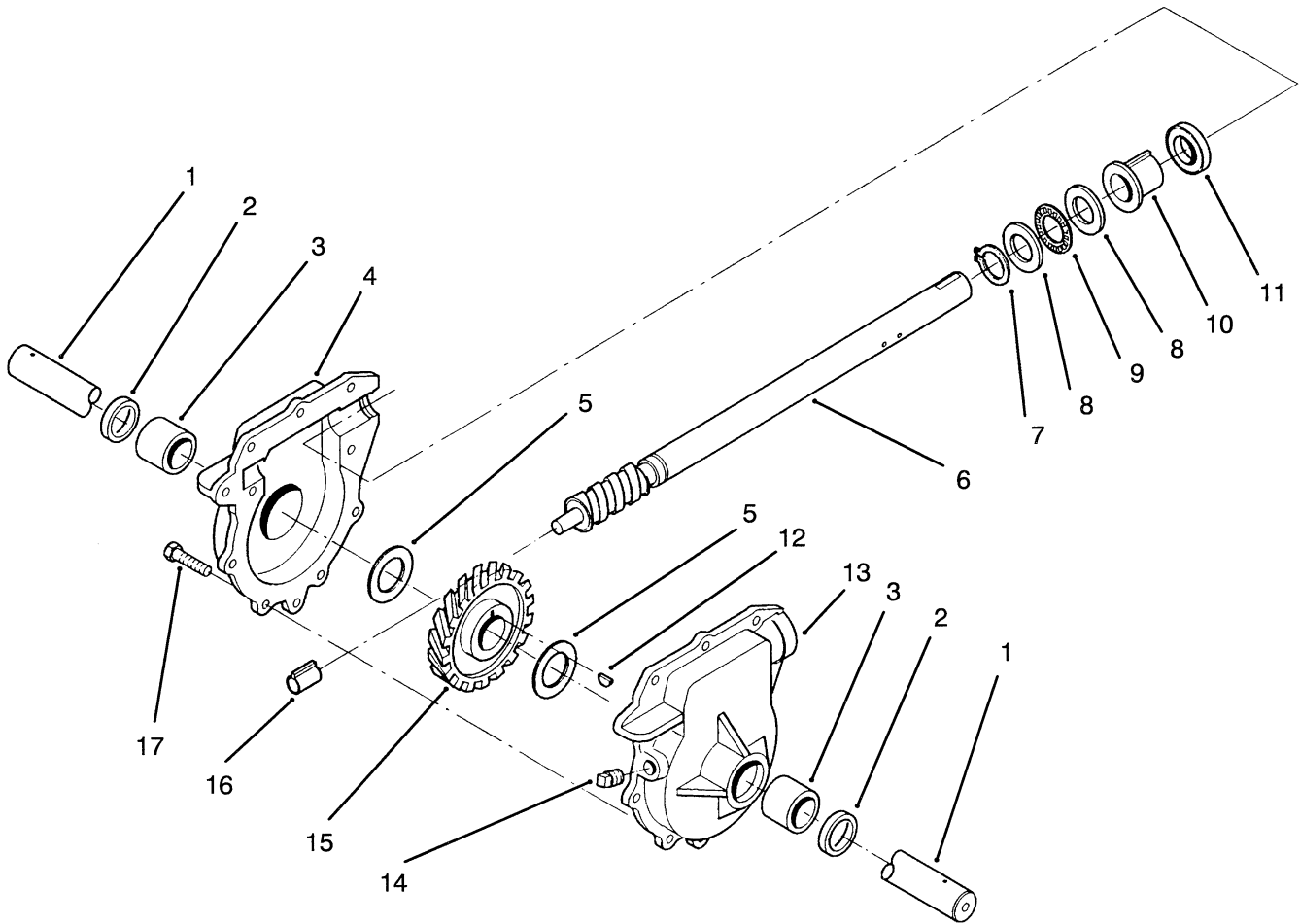
C-0045

## HOUSING ASSEMBLY (Continued)

Ref. No.	Part No.	Description	No. Used
33	3234-5	Screw - Hex. Washer Hd.	10
34	68-4170	Plate - Engine Stud L.H.	1
*	68-4160	Plate - Engine Stud R.H.	1
35	3257-23	Key - Woodruff	1
36	252-80	Washer - Thrust	1
37	3296-29	Nut - Lock	14
38		Flange - Bearing (Rear)	1
39	63-3450	Bearing - Impeller	1
40		Flange - Bearing (Front)	1
41	68-8410	Cover - Belt (Lower)	1
42	3256-23	Washer - Flat	1
43	52-2861	Washer	4
44	74-1440	Skid Assembly	2
45	66-7761	Blade - Scraper	1
46	66-7831	Plate - Side L.H.	1
47	3296-47	Nut - Lock	12
48	3230-23	Screw - Carriage	9

Ref. No.	Part No.	Description	No. Used
49	3296-42	Nut - Lock	10
50	66-7920	Impeller	1
51	66-8010	Spacer	2
52	321-44	Screw - Hex. Hd.	2
53	74-1561	Auger Gearbox Assembly	1
54	63-2751	Auger - R.H.	1
*	63-2761	Auger - L.H.	1
55	25-5090	Spacer - Auger Hub	2
56	20-0990	Flange - Bearing (Inner)	2
57	20-0980	Bearing - Auger	2
58	20-1000	Flange - Bearing (Outer)	2
59	17-7030	Bolt - Auger	2
60	321-3	Screw - Hex Hd.	8
*	12-8789	Impeller Bearing Assembly (Incl. Ref. #38-40)	1
*	12-8949	Loose Parts	1

\*Not Illustrated

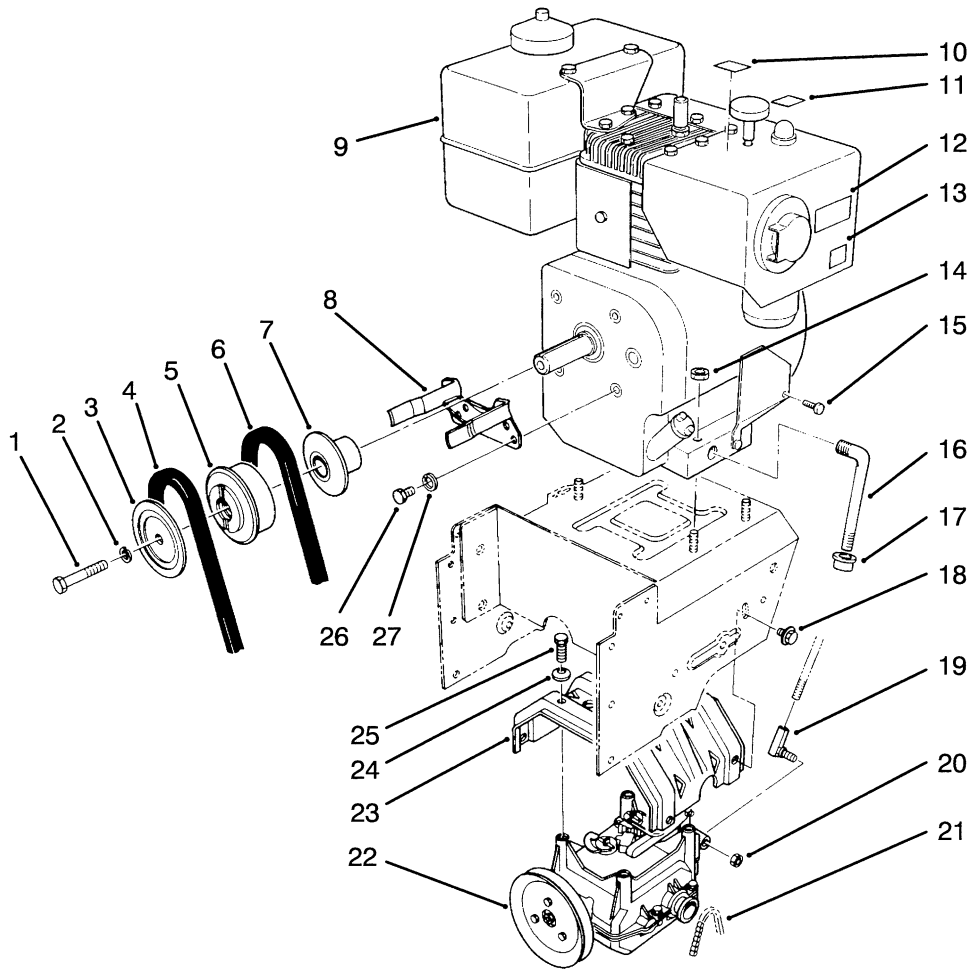


C-1015

## 28" AUGER GEARCASE ASSEMBLY NO. 74-1561

Ref. No.	Part No.	Description	No. Used	Ref. No.	Part No.	Description	No. Used
1	62-1531	Shaft - Auger (28")	1	10	37-6560	Bushing - Input	1
2	7-0045	Seal - Oil	2	11	253-149	Seal - Input	1
3	256-237	Bushing - Sleeve	2	12	3257-10	Key - Woodruff	1
4	74-1580	Gearcase Assembly - R.H. (Incl. Ref. # 2-3)	2	13	74-1570	Gearcase Assembly - L.H. (Incl. Ref. # 2-3)	1
5	252-71	Bearing - Thrust	2	14	281-1	Plug - Pipe Sq. Hd.	1
6	66-7811	Shaft - Impeller	1	15	62-0120	Gear - Helical	1
7	32151-33	Ring - Snap	1	16	62-1150	Bushing - Worm	1
8	252-78	Washer - Thrust	2	17	32144-110	Screw - Hex Washer Hd.	9
9	252-76	Bearing - Thrust	1	*	505-129	Sealant - 100g Tube	1

\*Not Illustrated



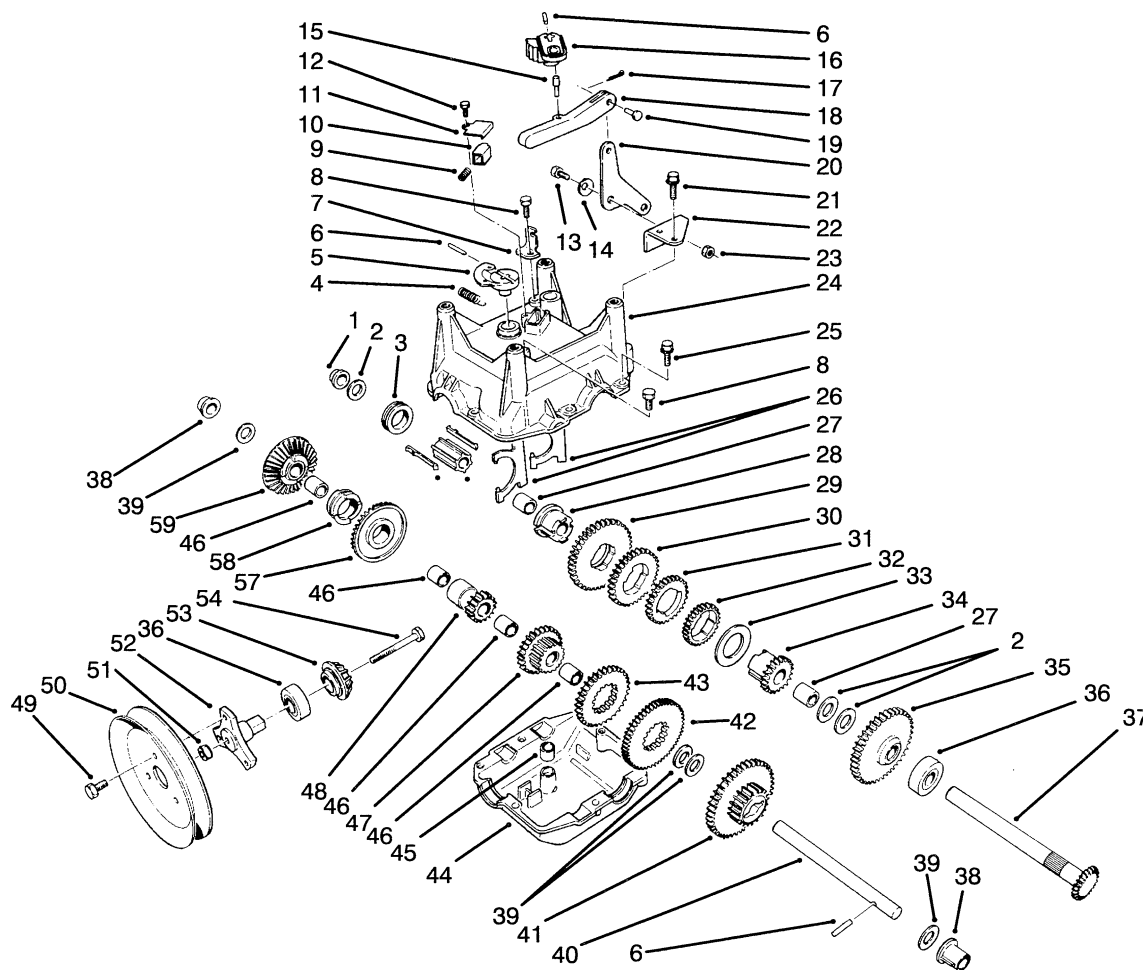
C-0050

## ENGINE ASSEMBLY

Ref. No.	Part No.	Description	No. Used
1	3212-8	Screw - Hex. Hd.	1
2	3253-6	Washer - Lock	1
3	62-0940	Sheave Half - Impeller	1
4	63-2964	Belt - Impeller	1
5	62-0930	Hub - Sheave	1
6	63-2953	Belt - Traction	1
7	62-0920	Sheave Half - Traction	1
8	68-7510	Guide - Belt	1
†9		Engine - Briggs & Stratton	1
10	63-2340	Decal - Throttle	1
11	63-2320	Decal - Primer	1
12	66-6840	Decal - Hot Surface	1
13	63-2360	Decal - Choke	1
14	32128-20	Nut - Lock	4

Ref. No.	Part No.	Description	No. Used
15	2210-250	Screw - Hex. Washer Hd.	1
16	67-9301	Pipe - Oil Drain	1
17	288-10	Cap - Pipe	1
18	3234-7	Screw - Hex Flange Hd.	4
19	63-2640	Joint - Ball	1
20	3296-39	Nut - Lock	1
21	63-2930	Chain - Drive	1
22	66-8030	Transmission Assembly	1
23	63-2990	Frame - Transmission	1
24	3290-461	Washer - Belleville	4
25	11-0590	Screw - Hex Hd.	4
26	3210-1	Screw - Hex Hd.	2
27	3253-4	Washer - Lock	2

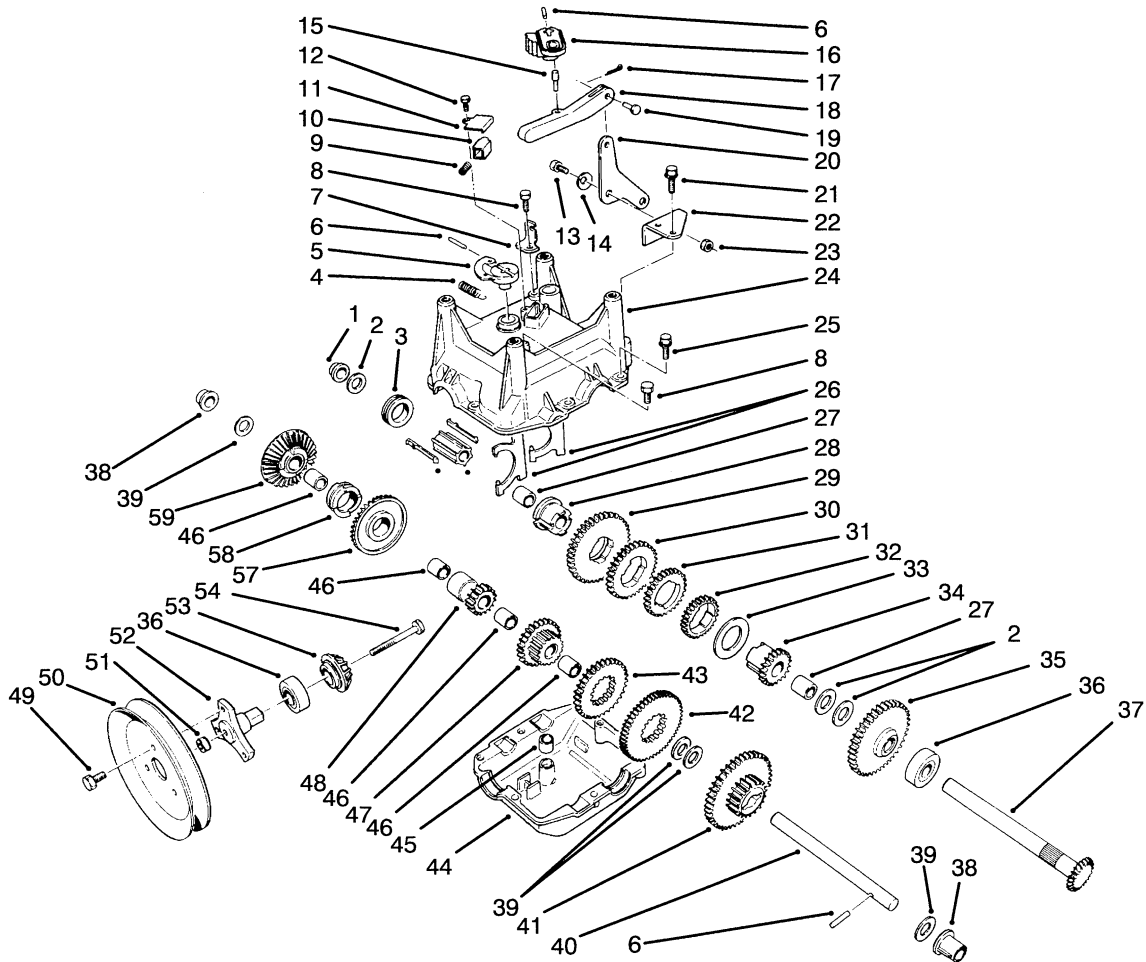
†Obtain from your local Briggs & Stratton Dealer.



C-0052

## TRANSMISSION ASSEMBLY NO. 66-8030

Ref. No.	Part No.	Description	No. Used	Ref. No.	Part No.	Description	No. Used
1	62-1180	Bushing - Output (Flange)	1	22	62-1190	Bracket - Bellcrank	1
2	252-59	Washer - Thrust	3	23	3296-42	Nut - Lock	1
3	62-0430	Collar - Shift (Speed)	1	24	62-0490	Gear Case - Upper	1
4	63-2920	Spring - Extension (F/R Return)	1	25	32144-86	Screw - Hex Washer Hd.	6
5	62-0880	Lever - Direction Shift	1	26	62-1040	Yoke - Shift	2
6	32121-106	Pin - Coil	3	27	62-1350	Bushing - Output	2
7	62-1740	Bracket - Cable	1	28	62-0320	Sleeve	1
8	32144-4	Screw - Self Tapping	2	29	62-0240	Gear - 45T	1
9	63-2890	Spring - Compression (Detent)	1	30	62-0220	Gear - 34T	1
10	62-1020	Button - Detent	1	31	62-0200	Gear - 27T	1
11	62-1690	Cover - Detent	1	32	62-0250	Gear - 29T	1
12	32104-71	Screw - Pan Hd.	1	33	63-2280	Washer - Thrust	1
13	63-3410	Bolt - Shoulder	1	34	62-0340	Sleeve - Gear 19T	1
14	3290-477	Washer - Curved	1	35	62-0370	Gear - 41T	1
15	63-2190	Pin - Gearshift Link	1	36	38-7820	Bearing - Ball	2
16	62-0870	Lever - Gear Shift	1	37	62-1080	Shaft - Output	1
17	3272-1	Pin - Cotter	1	38	62-1170	Bushing - Flange	2
18	62-0860	Link - Gearshift	1	39	257-10	Washer - Thrust	4
19	283-3	Pin - Clevis	1	40	62-0330	Shaft - Intermediate	1
20	63-2600	Bellcrank	1	41	62-0360	Gear - Compound 19T/41T	1
21	32104-95	Screw - Hex Washer Hd.	2	42	62-0260	Gear - 51T	1
				43	62-0210	Gear - 33T	1
				44	62-0480	Gear Case - Lower	1



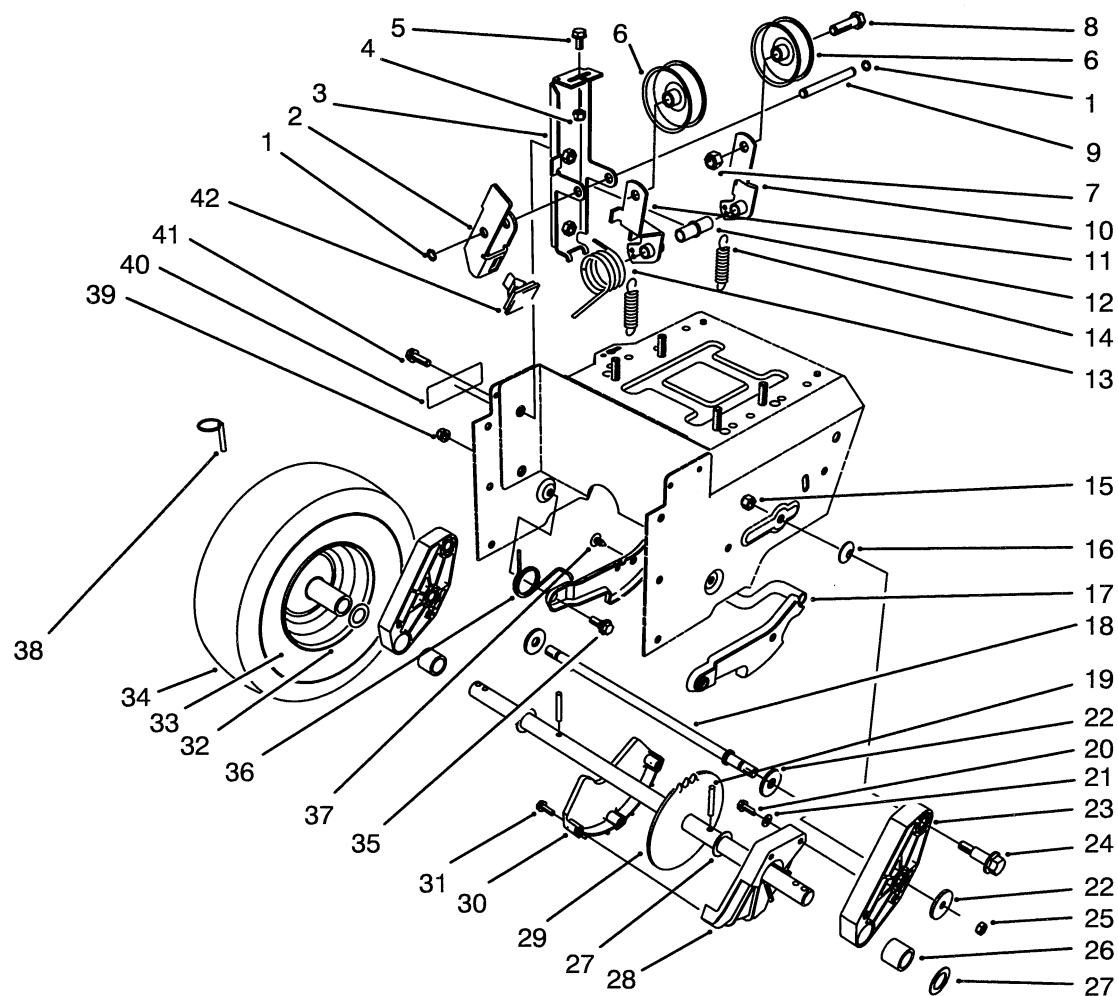
C-0052

## TRANSMISSION ASSEMBLY NO. 66-8030 (Continued)

Ref. No.	Part No.	Description	No. Used
45	29-9570	Bushing - Yoke	1
46	62-1160	Bushing - Intermediate	4
47	68-4310	Gear - 26T	1
48	62-0500	Gear - 15T	1
49	12-3270	Screw	3
50	62-1310	Pulley - Traction	1
51	32128-32	Nut - Flange Lock	1
52	62-0380	Hub - Pulley	1
53	62-0350	Pinion - Bevel 19T	1

Ref. No.	Part No.	Description	No. Used
54	321-15	Screw - Hex Hd.	1
55	68-4320	Sleeve - Shift	1
56	62-0310	Key - Shift	2
57	67-5870	Gear - Bevel 36T	1
58	67-5880	Collar - Shift	1
59	13-3559	Gear - Bevel Reverse 36T (Incl. Ref. #46)	1
*	505-101	Grease - 14.5 oz. Cartridge	1

\*Not Illustrated

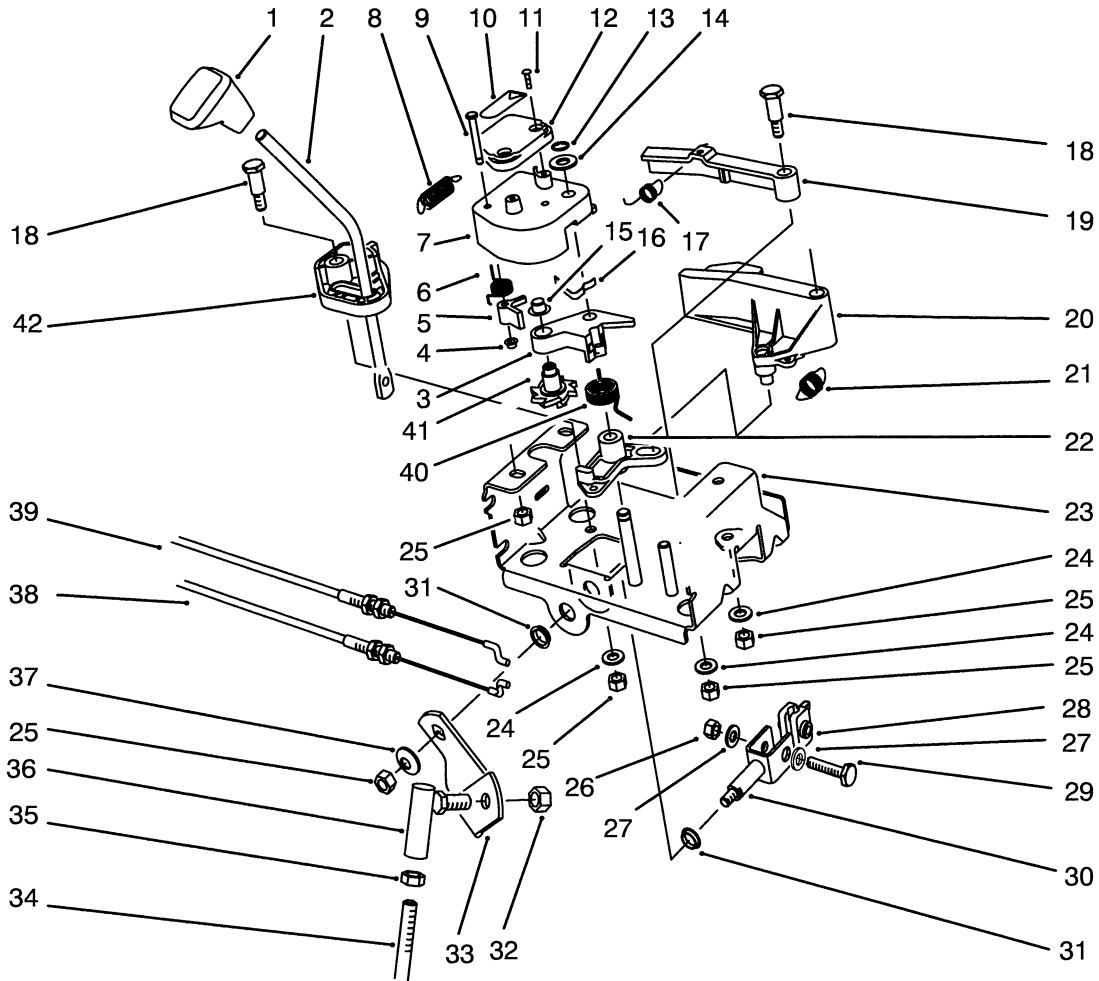


C-0053

## TRACTION DRIVE ASSEMBLY

Ref. No.	Part No.	Description	No. Used	Ref. No.	Part No.	Description	No. Used
1	32120-46	Ring - Retaining	2			(Incl. Ref. # 26)	2
2	63-2820	Arm - Brake	1	24	62-1330	Bolt - Shoulder	2
3	63-2850	Bracket - Idler Arm	1	25	3296-23	Nut - Lock	2
4	3296-42	Nut - Lock	1	26	63-2250	Bushing - Axle	2
5	3234-13	Screw - Hex. Hd.	1	27	252-80	Washer - Thrust	4
6	3-4244	Pulley - Idler	2	28	62-1010	Guard - Chain L.H.	1
7	3296-59	Nut - Lock	2	29	63-2112	Axle Assembly	1
8	323-7	Screw - Hex Hd.	2	30	62-1000	Guard - Chain R.H.	1
9	62-0970	Pin - Idler	1	31	32104-121	Screw - Hex Flange Hd.	3
10	62-1260	Arm - Traction Idler	1	32	241-127	Rim - Wheel	2
11	62-1280	Arm - Impeller Idler	1	33	232-48	Tube - Inner	2
12	62-1210	Bushing - Idler	1	34	231-123	Tire	2
13	63-2881	Spring - Torsion	1	35	5-2490	Bolt - Shoulder	2
14	63-2870	Spring - Extension	2	36	63-2740	Spring - Torsion	1
15	3296-39	Nut - Lock	2	37	3290-476	Fastener - Panel	1
16	3290-461	Washer - Belleville	2	38	3290-243	Pin - Klik	2
17	62-0470	Latch - Arm	1	39	3296-47	Nut - Lock	2
18	66-7720	Rod - Latch	1	40	66-6860	Decal - Warning	1
19	32121-9	Pin - Roll	2	41	3234-7	Screw - Hex Flange Hd.	2
20	32144-4	Screw - Hex Flange Hd.	2	42	66-8060	Pad - Brake	1
21	3256-1	Washer - Flat	2	*	66-6820	Spacer - Tire Chain	2
22	63-3340	Washer	4	*		Wheel & Tire Assembly (Incl. Ref. #32-34)	21
23	66-7740	Pivot Arm Assembly					

\*Not Illustrated

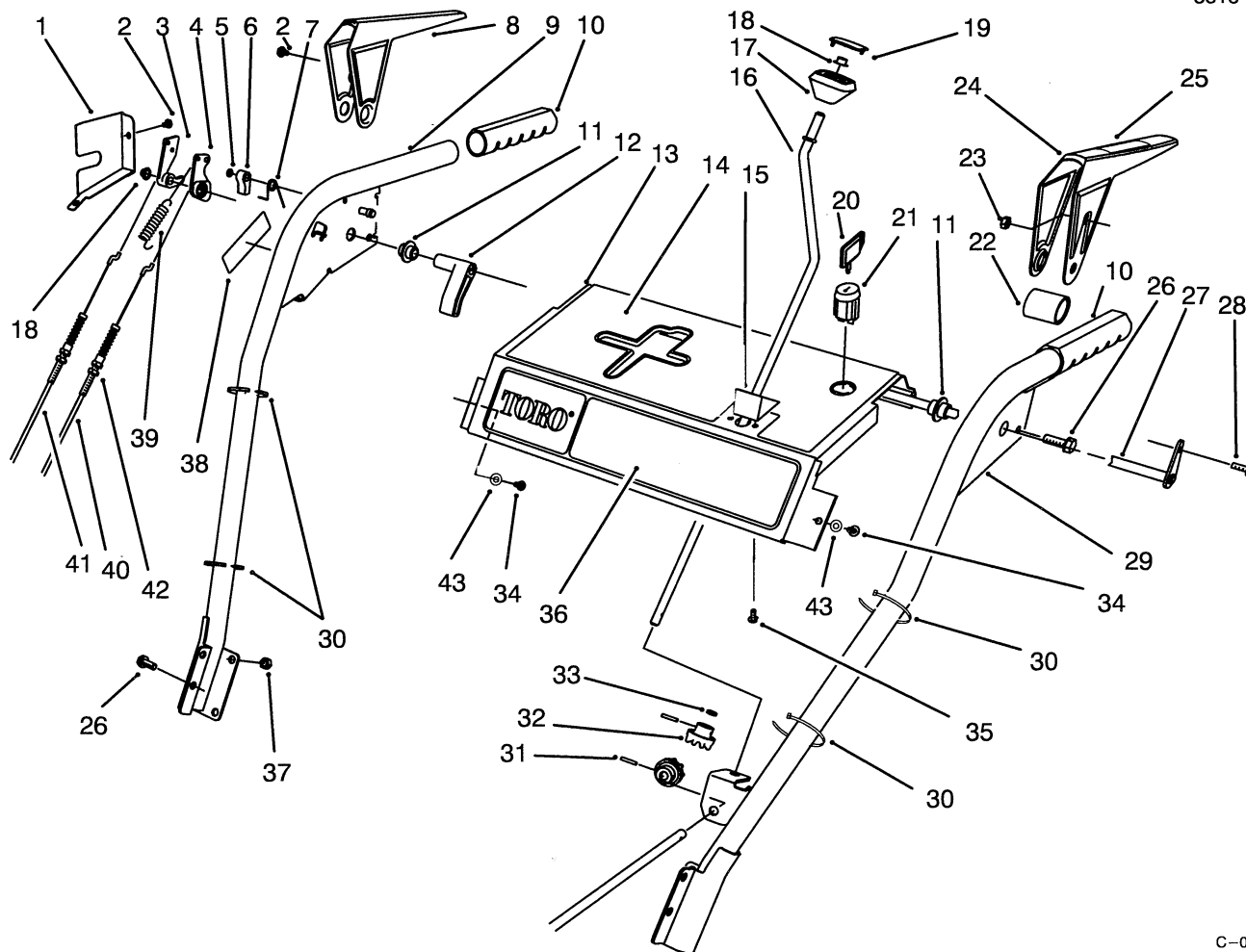


C-0054

## TRACTION LINKAGE ASSEMBLY

Ref. No.	Part No.	Description	No. Used
1	62-1290	Knob - Shift	1
2	67-9240	Rod - Shift (Upper)	1
3	62-1110	Lever - Index Wheel	1
4	3290-422	Nut - Push	1
5	62-0180	Tang - Index	1
6	62-1650	Spring - Torsion	1
7	62-1100	Lever - Latch	1
8	63-2220	Spring - Extension	1
9	63-2610	Pin - Tang	1
10	63-2480	Decal - #2	1
11	32104-118	Screw - Pan Hd.	2
12	62-1140	Cover - Latch	1
13	32120-46	Ring - Retaining	1
14	257-9	Washer - Thrust	1
15	3290-320	Nut - Push	1
16	62-1710	Spring - Flat	1
17	63-2240	Spring - Extension	1
18	63-2650	Screw - Shoulder	2
19	62-1700	Lever - Lockout	1
20	62-1130	Lever - Reverse	1
21	63-2230	Spring - Extension	1

Ref. No.	Part No.	Description	No. Used
22	62-1120	Lever - Reverse	1
23	63-2150	Frame - Control	1
24	3256-23	Washer - Flat	3
25	3296-29	Nut - Lock	7
26	3296-42	Nut - Lock	1
27	3256-1	Washer - Flat	2
28	67-9250	Retainer - Shift Rod	1
29	321-9	Screw - Cap Hex. Hd.	1
30	66-7730	Clevis	1
31	256-296	Bushing - Nyliner	2
32	3296-39	Nut - Lock	1
33	63-2630	Bracket - Shift	1
34	63-2830	Rod - Shift (Lower)	1
35	3220-3	Nut - Jam	2
36	63-2640	Joint - Ball	1
37	3290-456	Washer - Belleville	1
38	63-2210	Cable - Gearbox	1
39	63-2200	Cable - Latch	1
40	63-2270	Spring - Torsion	1
41	62-0170	Wheel - Index	1
42	62-1470	Base - Lockout	1

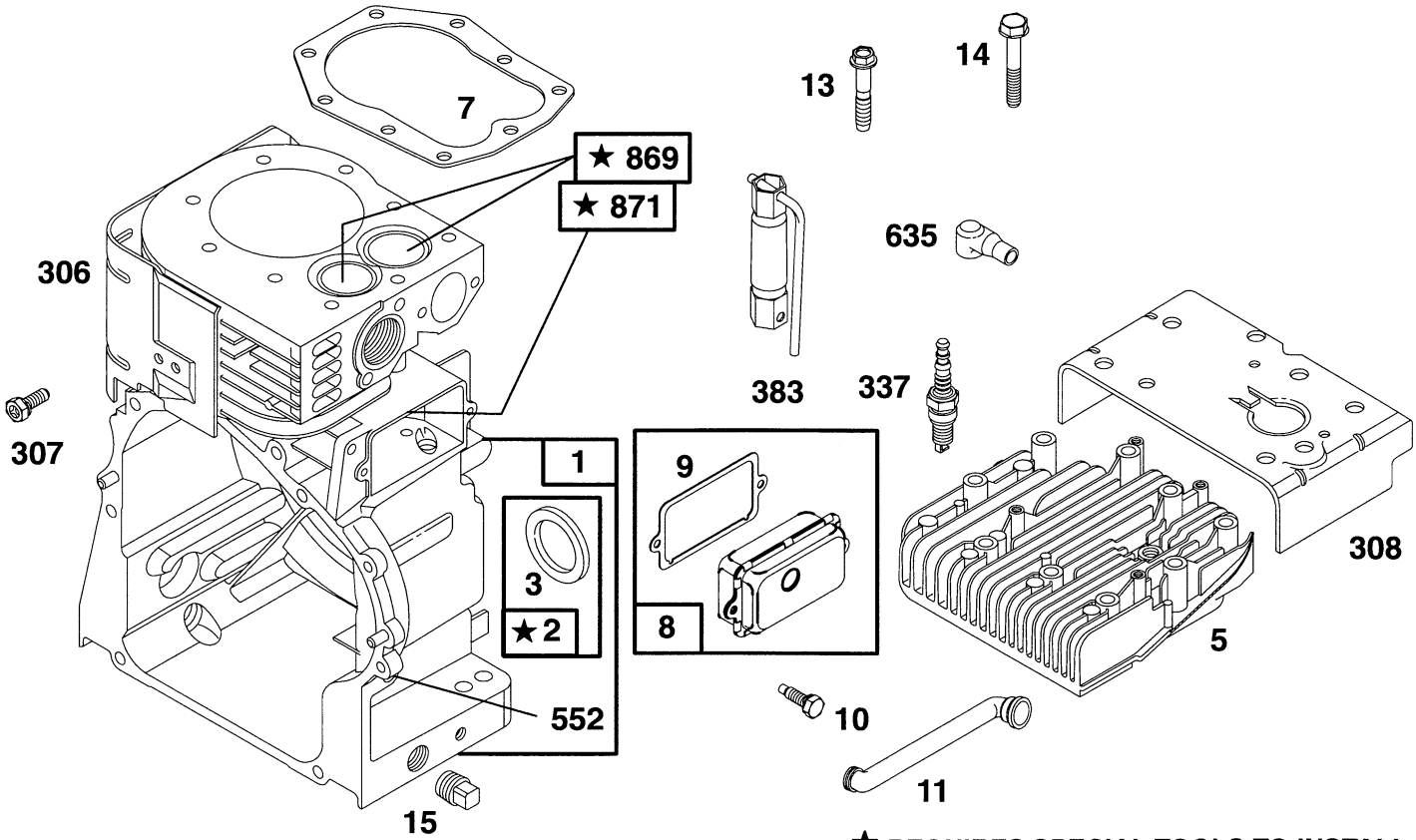


C-0055

## HANDLE ASSEMBLY

Ref. No.	Part No.	Description	No. Used	Ref. No.	Part No.	Description	No. Used
1	63-2170	Cover - Lever Lock	1	24	62-1060	Lever - Traction	1
2	2210-250	Screw	3	25	63-3050	Decal - Lever	1
3	62-0300	Tang - Locking	1	26	3234-7	Screw - Hex Flange Hd.	6
4	62-0290	Cam - Release	1	27	63-2030	Rod - Cross	1
5	32151-66	Ring - Retaining	1	28	3290-359	Screw	1
6	62-0280	Latch - Lock	1	29	66-8091	Handle - L.H.	1
7	63-2910	Spring - Torsion	1	30	3290-378	Tie - Cable	3
8	62-1050	Lever - Impeller	1	31	32121-50	Pin - Roll	2
9	62-1381	Handle - R.H.	1	32	62-1460	Gear - Universal	2
10	66-7850	Handlegrip	2	33	62-1230	Washer - Rubber	1
11	62-1070	Bushing - Lever	2	34	32104-76	Screw - Self Tapping	2
12	62-1640	Lever - Trip	1	35	32104-118	Screw - Pan Hd.	2
13	66-8100	Panel - Control	1	36	63-2520	Decal - Panel Front	1
14	66-6850	Decal - Panel Top	1	37	3296-47	Nut - Lock	4
15	62-1490	Plate - Guide	1	38	66-6860	Decal - Warning	1
16	63-2160	Rod - Chute Crank	1	39	88-0810	Spring - Extension	1
17	62-1320	Knob - Chute Control	1	40	63-2710	Cable - Traction	1
18	3290-320	Nut - Push	2	41	63-2700	Cable - Impeller	1
19	62-1520	Cover - Knob	1	42	3296-42	Nut	4
20	63-8360	Key - Switch	1	43	3256-14	Washer - Flat	2
21	40-5940	Switch - On/Off	1	*	63-3420	Harness - Wire	1
22	63-3380	Spacer - Traction Lever	1				
23	3296-2	Nut - Lock	1				

\*Not Illustrated



**1019 LABEL KIT**

**358 GASKET SET**

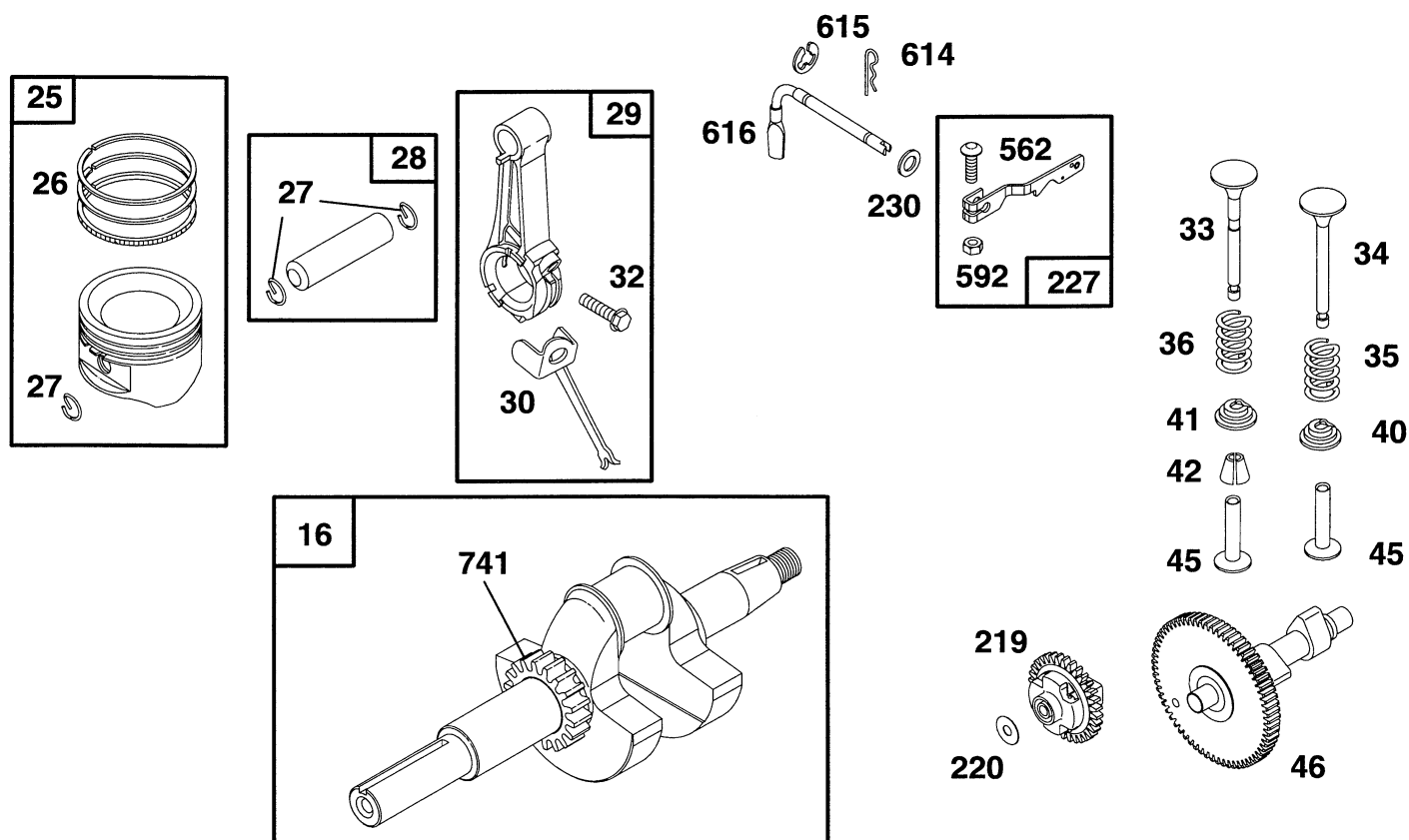
**★ REQUIRES SPECIAL TOOLS TO INSTALL. SEE REPAIR INSTRUCTION MANUAL.**

**ENGINE BRIGGS & STRATTON MODEL 190406-6142-01**

Ref. No.	Part No.	Description	No. Used
1	495631	Cylinder Assembly	
2	495657	Bushing-Cylinder	
★3	391086	Seal-Oil	
5	212918	Head-Cylinder	
★7	272163	Gasket-Cylinder Hd.	
8	495724	Breather Assembly	
★9	27803	Gasket-Valve Cover	
10	94621	Screw-Sem	
11	280733	Tube-Breather	
13	94565	Screw-Cylinder Head (3-9/16" Long) <b>Note:</b> 94547 Screw-Cylinder Head	
15	94239	Plug-Oil Drain	

Ref. No.	Part No.	Description	No. Used
		<b>Note:</b> 94720 Plug-Pipe (Flush)	
306	224898	Shield-Cylinder	
307	93949	Screw-Sem	
308	221901	Cover-Cylinder Head	
337	802592	Plug-Spark	
358	299577	Gasket Set	
383	89838	Wrench-Spark Plug	
552	491893	Bushing-Gov. Crank	
635	66538	Elbow-Spark Plug	
869	211661	Seat-Exhaust Valve	
871	231218	Guide-Valve	
1019	491181	Label Kit	

★ Included in Gasket Set-Part No. 299577.  
● Included in Carburetor Kit-Part No. 398235.



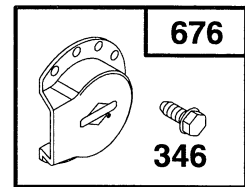
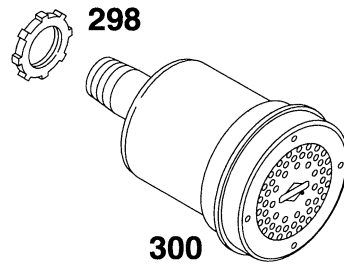
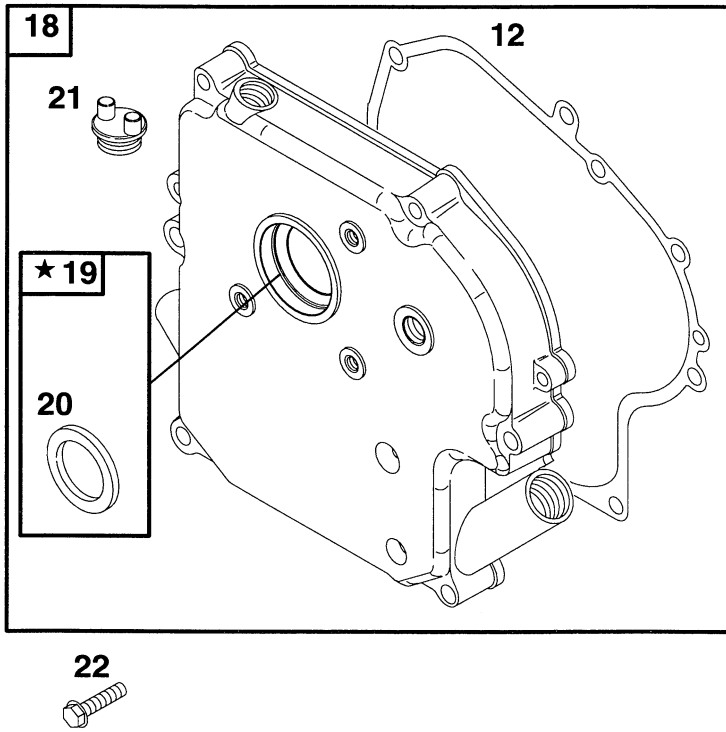
## ENGINE BRIGGS & STRATTON MODEL 190406-6142-01

Ref. No.	Part No.	Description	No. Used
16	495648	Crankshaft <b>Note:</b> For Timing Gear Retaining Device Order 94388 Key.	
25	391673	Piston Assy.(Standard)	
	391674	Piston Assy.(.010" O.S.)	
	391675	Piston Assy.(.020" O.S.)	
	391676	Piston Assy.(.030" O.S.)	
26	391669	Ring Set -Piston (Standard)	
	299743	Ring Set -Piston (Std., Chrome)	
	391670	Ring Set -Piston (.010" O.S.)	
	391671	Ring Set -Piston (.020" O.S.)	
	391672	Ring Set -Piston (.030" O.S.)	
27	68546	Lock -Piston Pin	
28	295840	Pin Assembly -Piston (Standard)	
	295841	Pin Assembly -Piston (.005" O.S.)	
29	390401	Rod Assembly -Connecting <b>Note:</b> 390773 Rod Assy.-Connecting (.020" Undersize)	

Ref. No.	Part No.	Description	No. Used
30	222113	Dipper -Connecting Rod	
32	92659	Screw Conn. Rod	
33	390419	Valve -Exhaust	
34	261055	Valve -Intake	
35	65906	Spring -Valve	
36	26828	Spring -Valve	
40	221596	Retainer -Intake Valve	
41	292260	Rotocoil -Exhaust Valve	
42	93630	Retainer -Exhaust Valve Rotocoil(2)	
45	260933	Tappet -Valve	
46	211689	Gear -Cam	
219	494845	Gear -Governor	
220	221551	Washer -Thrust	
227	391965	Lever Assy. -Governor	
230	94742	Washer -Governor Crank	
562	92613	Bolt -Governor Lever	
592	231082	Nut -Hex.	
614	93306	Cotter -Pin	
615	93307	Retainer -E-Ring	
616	231057	Crank -Governor	
741	262479	Gear -Timing	

\* Included in Gasket Set -Part No. 299577.

● Included in Carburetor Kit -Part No. 398235.



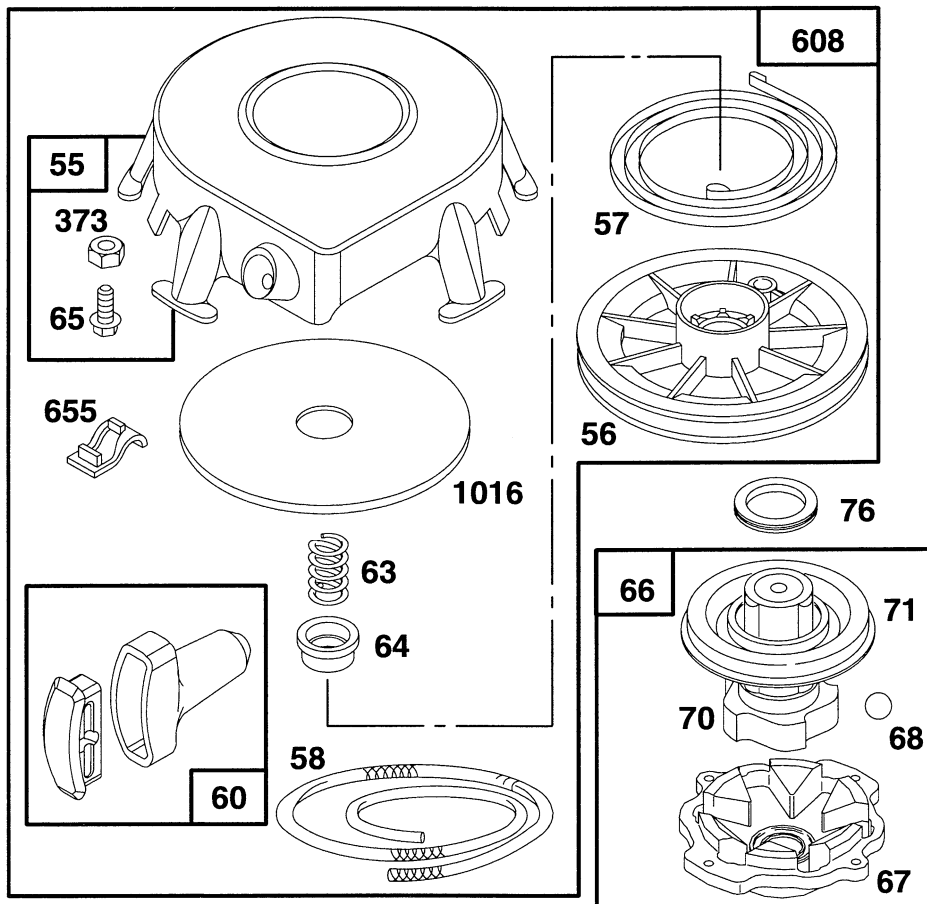
★ REQUIRES SPECIAL TOOLS TO INSTALL.  
SEE REPAIR INSTRUCTION MANUAL.

## ENGINE BRIGGS & STRATTON MODEL 190406-6142-01

Ref. No.	Part No.	Description	No. Used
★12	271701	Gasket-Crankcase Cover (1/64" Thick)	
★	27876	Gasket-Crankcase Cover (.005" Thick)	
★	27877	Gasket-Crankcase Cover (.009" Thick)	
18	392818	Cover-Crankcase	
19	295964	Bushing-Crankcase	

Ref. No.	Part No.	Description	No. Used
★20	391086	Seal-Oil	
21	66768	Plug-Oil Filler	
22	93585	Screw-Sem	
298	261409	Locknut-Muffler	
300	393010	Muffler-Exhaust	
346	93705	Screw-Sem	
676	393757	Deflector-Muffler	

- ★ Included in Gasket Set-Part No. 299577.
- Included in Carburetor Kit-Part No. 398235.

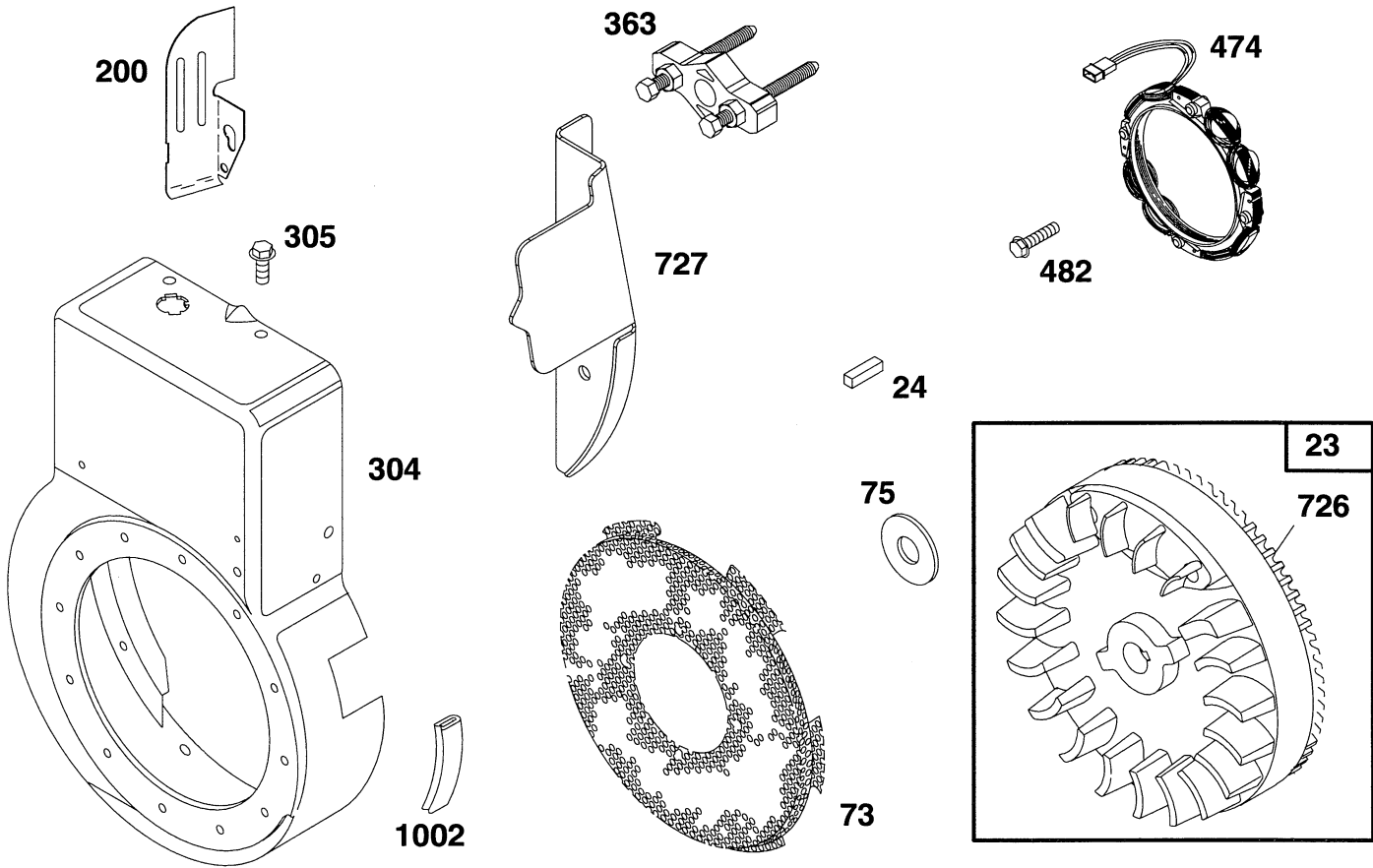


## ENGINE BRIGGS & STRATTON MODEL 190406-6142-01

Ref. No.	Part No.	Description	No. Used
55	398099	Housing-Rewind Starter	
56	295871	Pulley-Rewind Starter	
57	490179	Spring-Rewind Starter	
58	66884	Rope-Rewind Starter	
60	398101	Grip-Starter Rope	
63	260414	Spring-Ratchet	
64	230543	Adapter-Ratchet Spring	
65	94128	Screw-Sem	
66	399671	Clutch Assembly-Rewind Starter	
67	394897	Housing-Rewind Starter Clutch	

Ref. No.	Part No.	Description	No. Used
68	63770	Ball-Clutch	
70	298799	Ratchet-Rewind Starter Clutch	
71	394506	Washer-Clutch Retainer	
76	68238	Washer-Sealing	
373	92987	Nut-Hex.	
608	397982	Starter Assy.-Rewind	
655	222598	Anchor-Spring	
1016	490817	Spacer	

★ Included in Gasket Set-Part No. 299577.  
 ● Included in Carburetor Kit-Part No. 398235.



## ENGINE BRIGGS & STRATTON MODEL 190406-6142-01

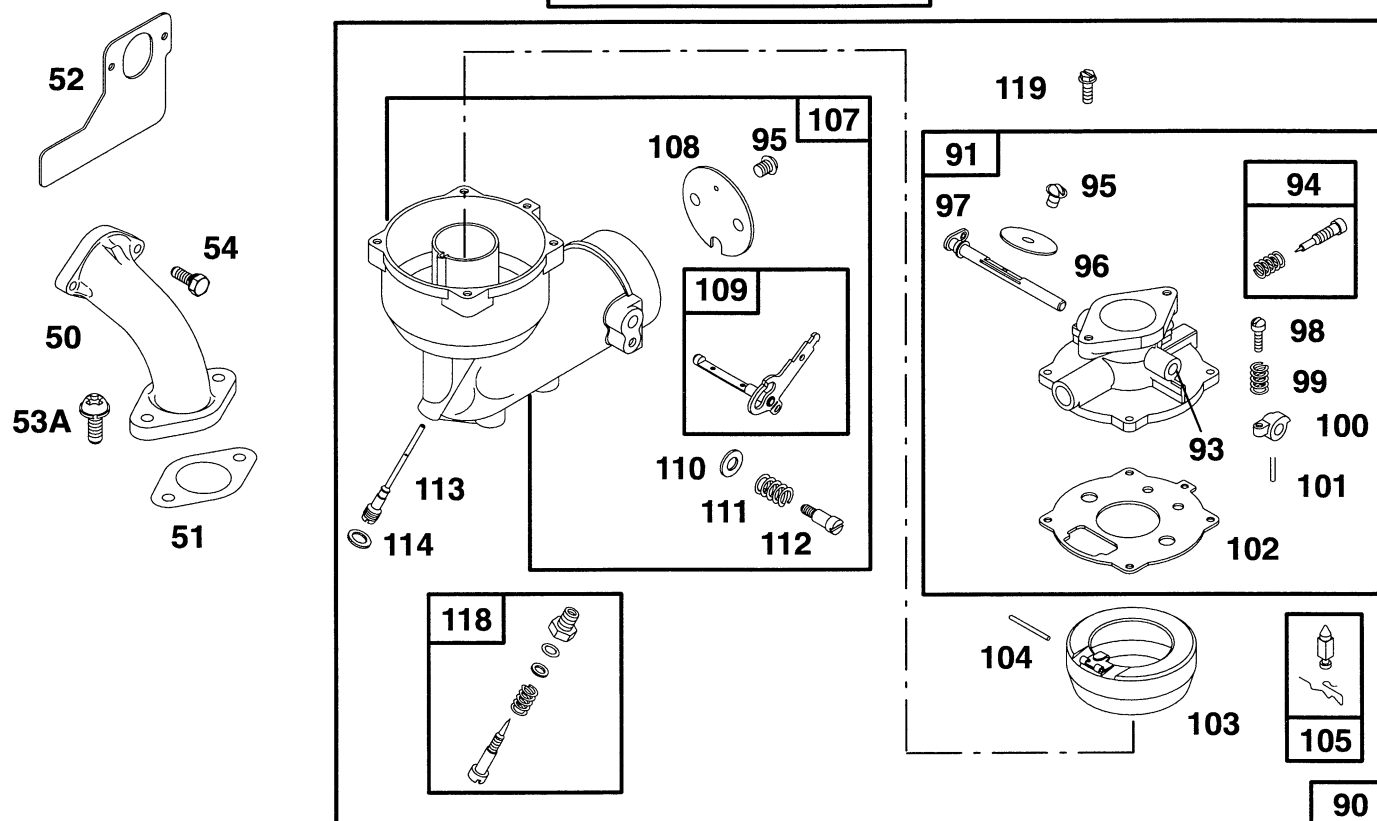
Ref. No.	Part No.	Description	No. Used
23	391983	Flywheel	
24	222698	Key-Flywheel	
73	221796	Screen-Rotating	
75	224061	Washer-Spring	
200	221760	Guide-Air	
304	399271	Housing-Blower	
305	94786	Screw-Sem	
363	19203	Puller-Flywheel	

Ref. No.	Part No.	Description	No. Used
474	391595	Stator-Alternator	
482	93621	Screw-Sem	
726	392134	Gear-Ring	
727	224886	Guard-Ring Gear	
1002	280738	Shield-Blower Housing	

**Uses:**  
 224871 Cover-Starter  
 94811 Screw-Hex. Hd.

★ Included in Gasket Set-Part No. 299577.  
 ● Included in Carburetor Kit-Part No. 398235.

## 121 CARBURETOR KIT

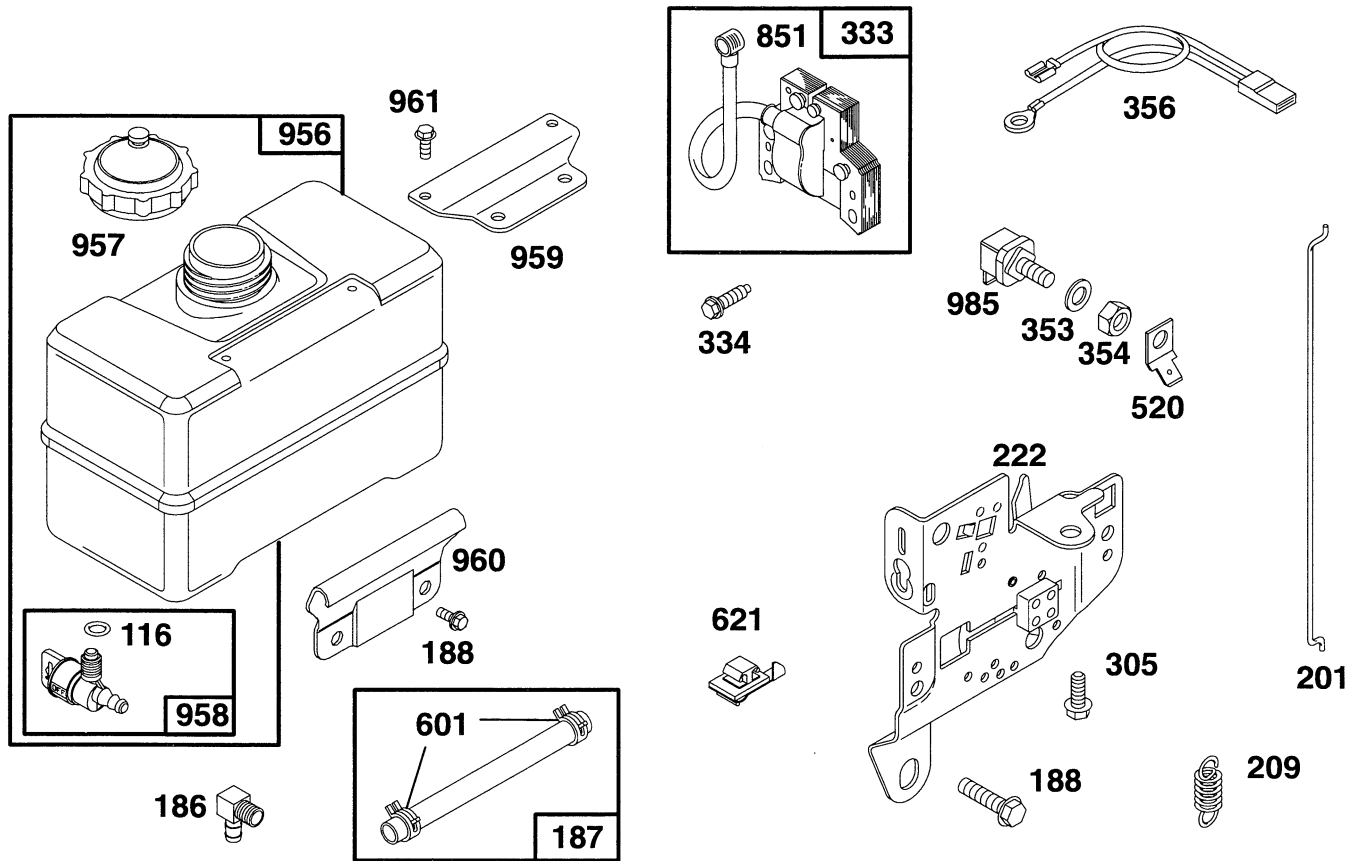


## ENGINE BRIGGS &amp; STRATTON MODEL 190406-6142-01

Ref. No.	Part No.	Description	No. Used
50	490050	Elbow-Intake	
51	★270684	Gasket-Carb. Mtg.	
52	★27828	Gasket-Intake Elbow	
53	93357	Screw-Carb. Mtg.	
54	93208	Screw-Sem	
90	490140	Carburetor	
91	399443	Body Assy.-Upper	
93	23108	Bushing-Throttle Shaft	
●94	292681	Valve-Idle Adjust	
95	93499	Screw-Sem	
96	223370	Valve-Throttle	
97	298826	Shaft-Throttle	
98	91920	Screw-Fil. Hd.	
99	26157	Spring-Idle Valve	
100	212904	Stop-Throttle	
101	93043	Pin-Throttle Lever	
●102	27918	Gasket-Body	
103	99333	Float-Carburetor	

Ref. No.	Part No.	Description	No. Used
●104	230896	Pin-Float Hinge	
●105	394681	Valve-Fuel Inlet	
107	399258	Body Assy.-Lower	
108	223727	Valve-Choke	
109	391888	Shaft Assy.-Choke	
110	222712	Washer-Lever	
111	26155	Spring-Lever	
112	23123	Screw-Choke Lever	
●113	398202	Jet-Needle Valve	
●114	68667	Gasket-Nozzle	
●118	99525	Valve-Needle	
		<b>Includes:</b>	
		22235 Washer-Brass	
		26336 Spring	
		65978 O-Ring	
		394033 Valve-Needle	
119	94152	Screw-Sem	
121	398235	Carburetor Kit	

- ★ Included in Gasket Set-Part No. 299577.  
 ● Included in Carburetor Kit-Part No. 398235.

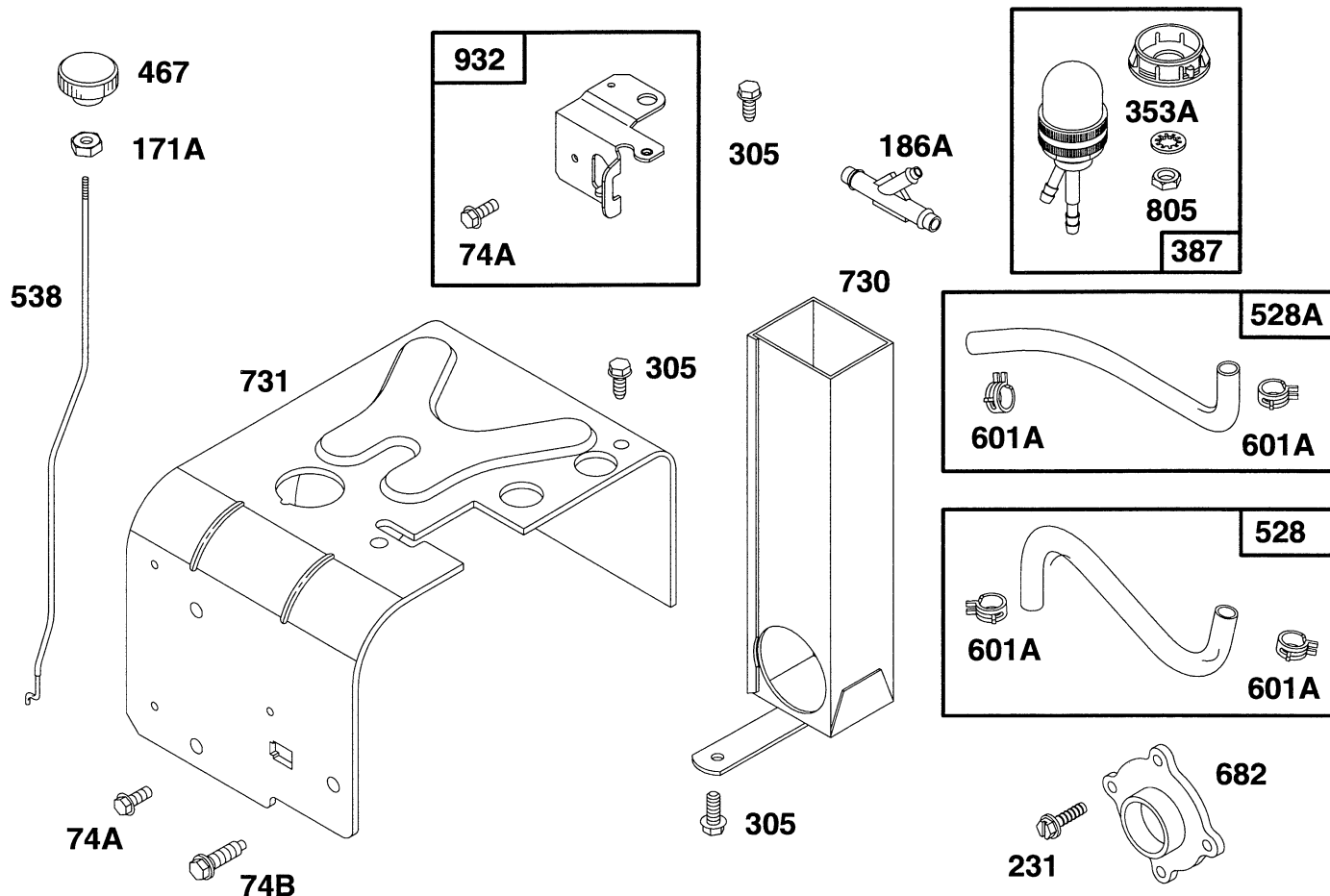


## ENGINE BRIGGS & STRATTON MODEL 190406-6142-01

Ref. No.	Part No.	Description	No. Used
116	280203	O-Ring-Fuel Valve	
186	67218	Connector-Fuel Pipe	
187	393815	Pipe-Fuel	
188	94627	Screw-Sem	
201	260872	Link-Governor	
209	261126	Spring-Governor	
222	399151	Plate-Control	
333	398811	Armature-Magneto	
334	93381	Screw-Sem	
353	92791	Washer-Lock	
354	90576	Nut-Hex.	
356	398838	Wire-Ground	
520	93722	Terminal-Spade	

Ref. No.	Part No.	Description	No. Used
601	93053	Clamp-Fuel Pipe (Green) <b>Note:</b> 93807 Clamp-Pipe (Black)	
621	396847	Switch-Stop	
851	221798	Terminal-Cable	
956	493337	Tank Assembly-Fuel	
957	493988	Cap-Fuel Tank	
958	399517	Valve Assy.-Fuel Shut-Off	
959	223462	Bracket-Fuel Tank (Upper)	
960	492990	Bracket-Fuel Tank (Lower)	
961	94095	Screw-Tank Mounting	
985	398525	Insulator Assembly	

★ Included in Gasket Set-Part No. 299577.  
● Included in Carburetor Kit-Part No. 398235.



## ENGINE BRIGGS & STRATTON MODEL 190406-6142-01

Ref. No.	Part No.	Description	No. Used
74A	93042	Screw-Sem	
74B	94680	Screw-Hex. Head	
171A	90356	Nut-Hex.	
186A	280727	Connector-Hose	
231	94238	Screw-Sem	
305	94786	Screw-Hex. Head	
353A	94281	Washer-Lock	
387	399255	Primer Group	
467	231051	Knob-Control	
528	399256	Hose-Primer (Includes Filter) (1/4" O.D.)	

Ref. No.	Part No.	Description	No. Used
528A	399254	Hose-Primer (1/4" O.D.)	
538	262549	Rod-Control	
601A	94171	Clamp-Hose (For 1/4" O.D. Hose)	
682	211516	Shield-Clutch	
730	299384	Stack-Air	
731	492291	Hood-Snow	
805	94189	Nut-Hex.	
932	396084	Guide-Rod	

★ Included in Gasket Set-Part No. 299577.  
 ● Included in Carburetor Kit-Part No. 398235.

# TORO PART NUMBER INDEX

3316-336

Part No.	Description	Pg. Ref. No. No. Qty.	Part No.	Description	Pg. Ref. No. No. Qty.
3-0750	Washer - Retaining	1 2 2	62-1120	Lever - Reverse	8 22 1
3-4244	Pulley - Idler	7 6 2	62-1130	Lever - Reverse	8 20 1
5-2490	Bolt - Shoulder	7 35 2	62-1140	Cover - Latch	8 12 1
7-0045	Seal - Oil	3 2 2	62-1150	Bushing - Worm	3 16 1
11-0590	Screw - Hex Hd.	4 25 4	62-1160	Bushing - Intermediate	6 46 4
12-3270	Screw	6 49 3	62-1170	Bushing - Flange	5 38 2
12-8789	Impeller Bearing Assembly	2 * 1	62-1180	Bushing - Output (Flange)	5 1 1
12-8949	Loose Parts	2 * 1	62-1190	Bracket - Bellcrank	5 22 1
13-3559	Gear - Bevel Reverse 36T	6 59 1	62-1210	Bushing - Idler	7 12 1
17-7030	Bolt - Auger	2 59 2	62-1230	Washer - Rubber	9 33 1
20-0980	Bearing - Auger	2 57 2	62-1260	Arm - Traction Idler	7 10 1
20-0990	Flange - Bearing (Inner)	2 56 2	62-1280	Arm - Impeller Idler	7 11 1
20-1000	Flange - Bearing (Outer)	2 58 2	62-1290	Knob - Shift	8 1 1
25-5090	Spacer - Auger Hub	2 55 2	62-1300	Pulley - Impeller	1 24 1
29-9570	Bushing - Yoke	6 45 1	62-1310	Pulley - Traction	6 50 1
37-6560	Bushing - Input	3 10 1	62-1320	Knob - Chute Control	9 17 1
38-7820	Bearing - Ball	5 36 2	62-1330	Bolt - Shoulder	7 24 2
40-5940	Switch - On/Off	9 21 1	62-1350	Bushing - Output	5 27 2
52-2861	Washer	2 43 4	62-1381	Handle - R.H.	9 9 1
53-7670	Decal - Danger Auger	1 5 1	62-1430	Retainer - Chute	1 11 3
62-0120	Gear - Helical	3 15 1	62-1440	Cover - Engine Frame	1 32 1
62-0170	Wheel - Index	8 41 1	62-1460	Gear - Universal	9 32 2
62-0180	Tang - Index	8 5 1	62-1470	Base - Lockout	8 42 1
62-0200	Gear - 27T	5 31 1	62-1490	Plate - Guide	9 15 1
62-0210	Gear - 33T	5 43 1	62-1520	Cover - Knob	9 19 1
62-0220	Gear - 34T	5 30 1	62-1531	Shaft - Auger (28)	3 1 1
62-0240	Gear - 45T	5 29 1	62-1640	Lever - Trip	9 12 1
62-0250	Gear - 29T	5 32 1	62-1650	Spring - Torsion	8 6 1
62-0260	Gear - 51T	5 42 1	62-1690	Cover - Detent	5 11 1
62-0280	Latch - Lock	9 6 1	62-1700	Lever - Lockout	8 19 1
62-0290	Cam - Release	9 4 1	62-1710	Spring - Flat	8 16 1
62-0300	Tang - Locking	9 3 1	62-1720	Rod - Chute Gear	1 23 1
62-0310	Key - Shift	6 56 2	62-1740	Bracket - Cable	5 7 1
62-0320	Sleeve	5 28 1	63-2030	Rod - Cross	9 27 1
62-0330	Shaft - Intermediate	5 40 1	63-2080	Cover - Belt (Upper)	1 28 1
62-0340	Sleeve - Gear 19T	5 34 1	63-2112	Axle Assembly	7 29 1
62-0350	Pinion - Bevel 19T	6 53 1	63-2150	Frame - Control	8 23 1
62-0360	Gear - Compound 19T/41T	5 41 1	63-2160	Rod - Chute Crank	9 16 1
62-0370	Gear - 41T	5 35 1	63-2170	Cover - Lever Lock	9 1 1
62-0380	Hub - Pulley	6 52 1	63-2180	Bracket - Gear	1 7 1
62-0430	Collar - Shift (Speed)	5 3 1	63-2190	Pin - Gearshift Link	5 15 1
62-0470	Latch - Arm	7 17 1	63-2200	Cable - Latch	8 39 1
62-0480	Gear Case - Lower	5 44 1	63-2210	Cable - Gearbox	8 38 1
62-0490	Gear Case - Upper	5 24 1	63-2220	Spring - Extension	8 8 1
62-0500	Gear - 15T	6 48 1	63-2230	Spring - Extension	8 21 1
62-0721	Housing - 28	1 6 1	63-2240	Spring - Extension	8 17 1
62-0820	Gear - Worm	1 22 1	63-2250	Bushing - Axle	7 26 2
62-0840	Chute Assembly	1 19 1	63-2270	Spring - Torsion	8 40 1
62-0860	Link - Gearshift	5 18 1	63-2280	Washer - Thrust	5 33 1
62-0870	Lever - Gear Shift	5 16 1	63-2300	Retainer - Cable	1 26 1
62-0880	Lever - Direction Shift	5 5 1	63-2320	Decal - Primer	4 11 1
62-0920	Sheave Half - Traction	4 7 1	63-2340	Decal - Throttle	4 10 1
62-0930	Hub - Sheave	4 5 1	63-2360	Decal - Chokey	4 13 1
62-0940	Sheave Half - Impeller	4 3 1	63-2480	Decal - #2	8 10 1
62-0970	Pin - Idler	7 9 1	63-2520	Decal - Panel Front	9 36 1
62-1000	Guard - Chain R.H.	7 30 1	63-2600	Bellcrank	5 20 1
62-1010	Guard - Chain L.H.	7 28 1	63-2610	Pin - Tang	8 9 1
62-1020	Button - Detent	5 10 1	63-2630	Bracket - Shift	8 33 1
62-1040	Yoke-Shift	5 26 2	63-2640	Joint - Ball	8 36 1
62-1050	Lever - Impeller	9 8 1	63-2640	Joint - Ball	4 19 1
62-1060	Lever - Traction	9 24 1	63-2650	Screw - Shoulder	8 18 2
62-1070	Bushing - Lever	9 11 2	63-2670	Plate - Chute Retainer	1 10 3
62-1080	Shaft - Output	5 37 1	63-2700	Cable - Impeller	9 41 1
62-1100	Lever - Latch	8 7 1	63-2710	Cable - Traction	9 40 1
62-1110	Lever - Index Wheel	8 3 1	63-2740	Spring - Torsion	7 36 1

\*Not Illustrated

# TORO PART NUMBER INDEX (Cont.)

3316-336

Part No.	Description	Pg. Ref. No. No. Qty.	Part No.	Description	Pg. Ref. No. No. Qty.
63-2751	Auger - R.H.	2 54 1	232-48	Tube - Inner	7 33 2
63-2761	Auger - L.H.	2 * 1	241-127	Rim - Wheel	7 32 2
63-2820	Arm - Brake	7 2 1	252-59	Washer - Thrust	5 2 3
63-2830	Rod - Shift (Lower)	8 34 1	252-71	Bearing - Thrust	3 5 2
63-2850	Bracket - Idler Arm	7 3 1	252-76	Bearing - Thrust	3 9 1
63-2870	Spring - Extension	7 14 2	252-78	Washer - Thrust	3 8 2
63-2881	Spring - Torsion	7 13 1	252-80	Washer - Thrust	7 27 4
63-2890	Spring - Compression	5 9 1	252-80	Washer - Thrust	2 36 1
63-2900	Washer - Plastic	1 17 2	253-149	Seal - Input	3 11 1
63-2910	Spring - Torsion	9 7 1	256-237	Bushing - Sleeve	3 3 2
63-2920	Spring - Extension	5 4 1	256-296	Bushing - Nylon	8 31 2
63-2930	Chain - Drive	4 21 1	257-9	Washer - Thrust	8 14 1
63-2953	Belt - Traction	4 6 1	257-10	Washer - Thrust	5 39 4
63-2964	Belt - Impeller	4 4 1	281-1	Plug - Pipe Sq. Hd.	3 14 1
63-2990	Frame - Transmission	4 23 1	283-3	Pin - Clevis	5 19 1
63-3020	Guard - Chute	1 14 1	288-10	Cap - Pipe	4 17 1
63-3050	Decal - Lever	9 25 1	321-3	Screw - Hex Hd.	2 60 8
63-3130	Clip - Chute Guard	1 12 1	321-9	Screw - Cap Hex. Hd.	8 29 1
63-3290	Cover - Cable	1 29 1	321-15	Screw - Hex Hd.	6 54 1
63-3340	Washer	7 22 4	321-44	Screw - Hex. Hd.	2 52 2
63-3380	Spacer - Traction Lever	9 22 1	323-6	Screw - Hex Hd.	1 1 2
63-3410	Bolt - Shoulder	5 13 1	323-7	Screw - Hex Hd.	7 8 2
63-3420	Harness - Wire	9 * 1	3210-1	Screw - Hex Hd.	4 26 2
63-3450	Bearing - Impeller	2 39 1	3212-8	Screw - Hex. Hd.	4 1 1
63-3740	Decal - Danger Chute	1 20 1	3220-3	Nut - Jam	8 35 2
63-8360	Key - Switch	9 20 1	3230-2	Bolt - Carriage	1 8 1
66-6820	Spacer - Tire Chain	7 * 2	3230-23	Screw - Carriage	2 48 9
66-6840	Decal - Hot Surface	4 12 1	3234-5	Screw - Hex. Washer Hd.	2 33 10
66-6850	Decal - Panel Top	9 14 1	3234-7	Screw - Hex Flange Hd.	4 18 4
66-6860	Decal - Warning	9 38 1	3234-7	Screw - Hex Flange Hd.	9 26 6
66-6860	Decal - Warning	7 40 1	3234-7	Screw - Hex Flange Hd.	7 41 2
66-6981	Frame - Engine	1 31 1	3234-13	Screw - Hex. Hd.	7 5 1
66-7720	Rod - Latch	7 18 1	3234-28	Screw - Hex Flange Hd.	1 4 12
66-7730	Clevis	8 30 1	3242-4	Screw - Set Sq. Hd.	1 25 2
66-7740	Pivot Arm Assembly	7 23 2	3253-4	Washer - Lock	4 27 2
66-7761	Blade - Scraper	2 45 1	3253-6	Washer - Lock	4 2 1
66-7811	Shaft - Impeller	3 6 1	3256-1	Washer - Flat	7 21 2
66-7821	Plate - Side R.H.	1 3 1	3256-1	Washer - Flat	8 27 2
66-7831	Plate - Side L.H.	2 46 1	3256-14	Washer - Flat	1 16 1
66-7850	Handlegrip	9 10 2	3256-14	Washer - Flat	9 43 2
66-7920	Impeller	2 50 1	3256-23	Washer - Flat	8 24 3
66-8010	Spacer	2 51 2	3256-23	Washer - Flat	2 42 1
66-8030	Transmission Assembly	4 22 1	3256-61	Washer - Flat	1 21 1
66-8060	Pad - Brake	7 42 1	3257-10	Key - Woodruff	3 12 1
66-8091	Handle - L.H.	9 29 1	3257-23	Key - Woodruff	2 35 1
66-8100	Panel - Control	9 13 1	3269-23	Rivet	1 30 4
67-5870	Gear - Bevel 36T	6 57 1	3272-1	Pin - Cotter	5 17 1
67-5880	Collar - Shift	6 58 1	3274-13	Screw - Machine	1 13 3
67-9240	Rod - Shift (Upper)	8 2 1	3290-243	Pin - Klik	7 38 2
67-9250	Retainer - Shift Rod	8 28 1	3290-320	Nut - Push	8 15 1
67-9301	Pipe - Oil Drain	4 16 1	3290-320	Nut - Push	9 18 2
68-4160	Plate - Engine Stud R.H.	2 * 1	3290-326	Nut - Push	1 15 2
68-4170	Plate - Engine Stud L.H.	2 34 1	3290-359	Screw	9 28 1
68-4310	Gear - 26T	6 47 1	3290-378	Tie - Cable	9 30 3
68-4320	Sleeve - Shift	6 55 1	3290-422	Nut - Push	8 4 1
68-7510	Guide - Belt	4 8 1	3290-456	Washer - Belleville	8 37 1
68-8410	Cover - Belt (Lower)	2 41 1	3290-461	Washer - Belleville	7 16 2
74-1440	Skid Assembly	2 44 2	3290-461	Washer - Belleville	4 24 4
74-1561	Auger Gearbox Assembly	2 53 1	3290-476	Fastener - Panel	7 37 1
74-1570	Gearcase Assembly - L.H.	3 13 1	3290-477	Washer - Curved	5 14 1
74-1580	Gearcase Assembly - R.H.	3 4 2	3296-2	Nut - Lock	1 9 4
88-0810	Spring - Extension	9 39 1	3296-2	Nut - Lock	9 23 1
2210-250	Screw	9 2 3	3296-23	Nut - Lock	7 25 2
2210-250	Screw - Hex. Washer Hd.	4 15 1	3296-29	Nut - Lock	8 25 7
231-123	Tire	7 34 2	3296-29	Nut - Lock	2 37 14

\*Not Illustrated

# TORO PART NUMBER INDEX (Cont.)

Part No.	Description	Pg. Ref.		Part No.	Description	Pg. Ref.	
		No.	Qty.			No.	Qty.
3296-39	Nut - Lock	7	15 2	32121-106	Pin - Coil	5	6 3
3296-39	Nut - Lock	4	20 1	32122-32	Screw	1	18 1
3296-39	Nut - Lock	8	32 1	32128-20	Nut - Lock	4	14 4
3296-42	Nut	9	42 4	32128-32	Nut - Flange Lock	6	51 1
3296-42	Nut - Lock	7	4 1	32144-4	Screw - Hex Flange Hd.	1	27 6
3296-42	Nut - Lock	5	23 1	32144-4	Screw - Hex Flange Hd.	7	20 2
3296-42	Nut - Lock	8	26 1	32144-4	Screw - Self Tapping	5	8 2
3296-42	Nut - Lock	2	49 10	32144-86	Screw - Hex Washer Hd.	5	25 6
3296-47	Nut - Lock	9	37 4	32144-110	Screw - Hex Washer Hd.	3	17 9
3296-47	Nut - Lock	7	39 2	32151-33	Ring - Snap	3	7 1
3296-47	Nut - Lock	2	47 12	32151-66	Ring - Retaining	9	5 1
3296-59	Nut - Lock	7	7 2	505-101	Grease - 14.5 oz. Cartridge	6	* 1
32104-71	Screw - Pan Hd.	5	12 1	505-129	Sealant - 100g Tube	3	* 1
32104-76	Screw - Self Tapping	9	34 2	<b>OPTIONAL EQUIPMENT</b>			
32104-95	Screw - Hex Washer Hd.	5	21 2	110 Vac Electric Starter	Part No. 37-4630		
32104-118	Screw - Pan Hd.	8	11 2	Tire Chains	Part No. 63-3040		
32104-118	Screw - Pan Hd.	9	35 2	Snow Cab	Part No. 68-9500		
32104-121	Screw - Hex Flange Hd.	7	31 3	Drift Breaker Kit	Part No. 66-7970		
32120-46	Ring - Retaining	7	1 2	Light Kit	Part No. 66-7940		
32120-46	Ring - Retaining	8	13 1	Differential Kit	Model # 38038		
32121-9	Pin - Roll	7	19 2				
32121-50	Pin - Roll	9	31 2				

## TABLE OF CONTENTS

Description	Page	Description	Page
Housing & Chute Assembly	1	Traction Linkage Assembly	8
28" Auger Gearcase Assembly	3	Handle Assembly	9
Engine Assembly	4	Engine Parts Breakdown	10
Transmission Assembly	5	Part Index	18
Traction Drive Assembly	7		