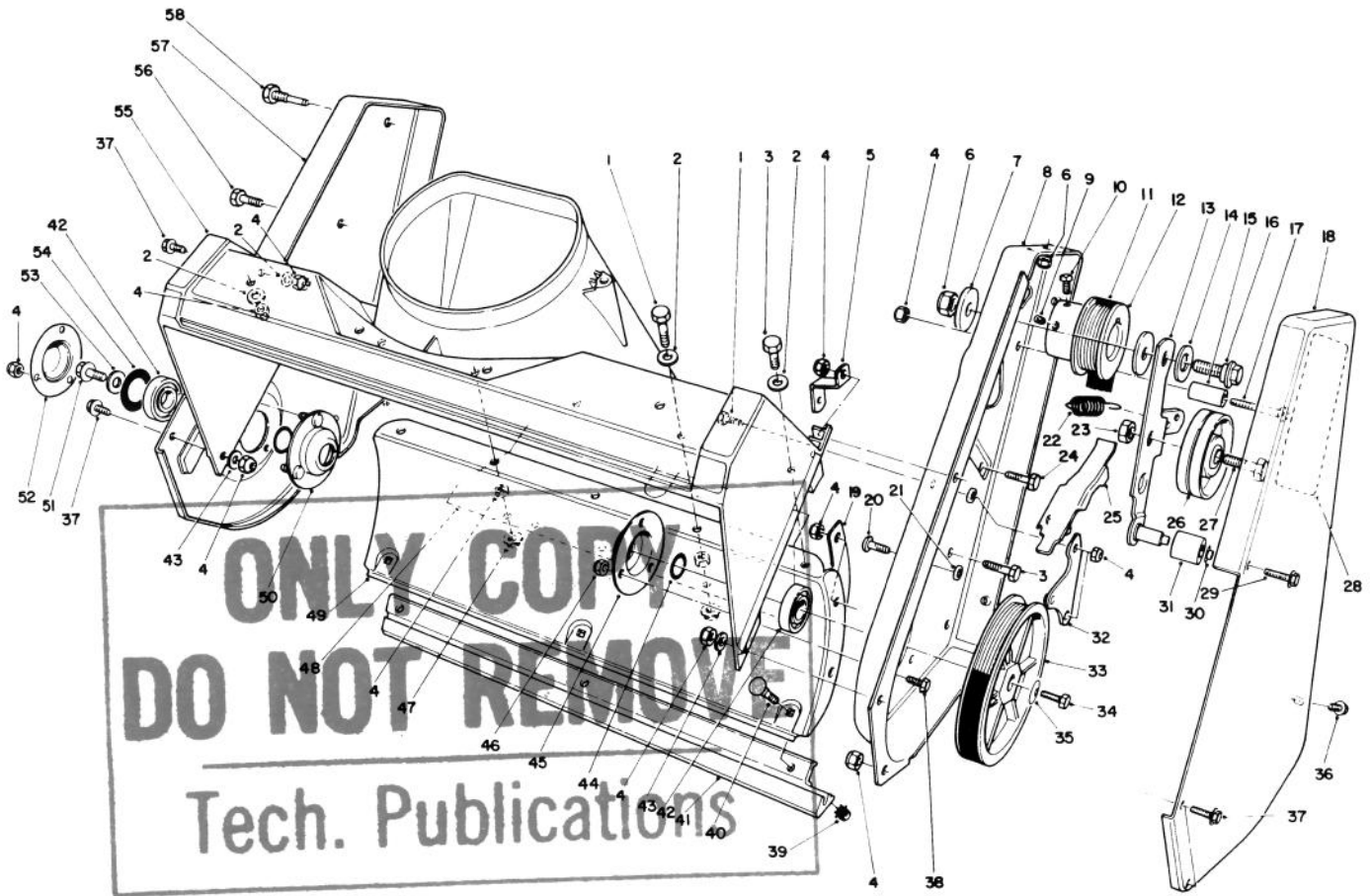


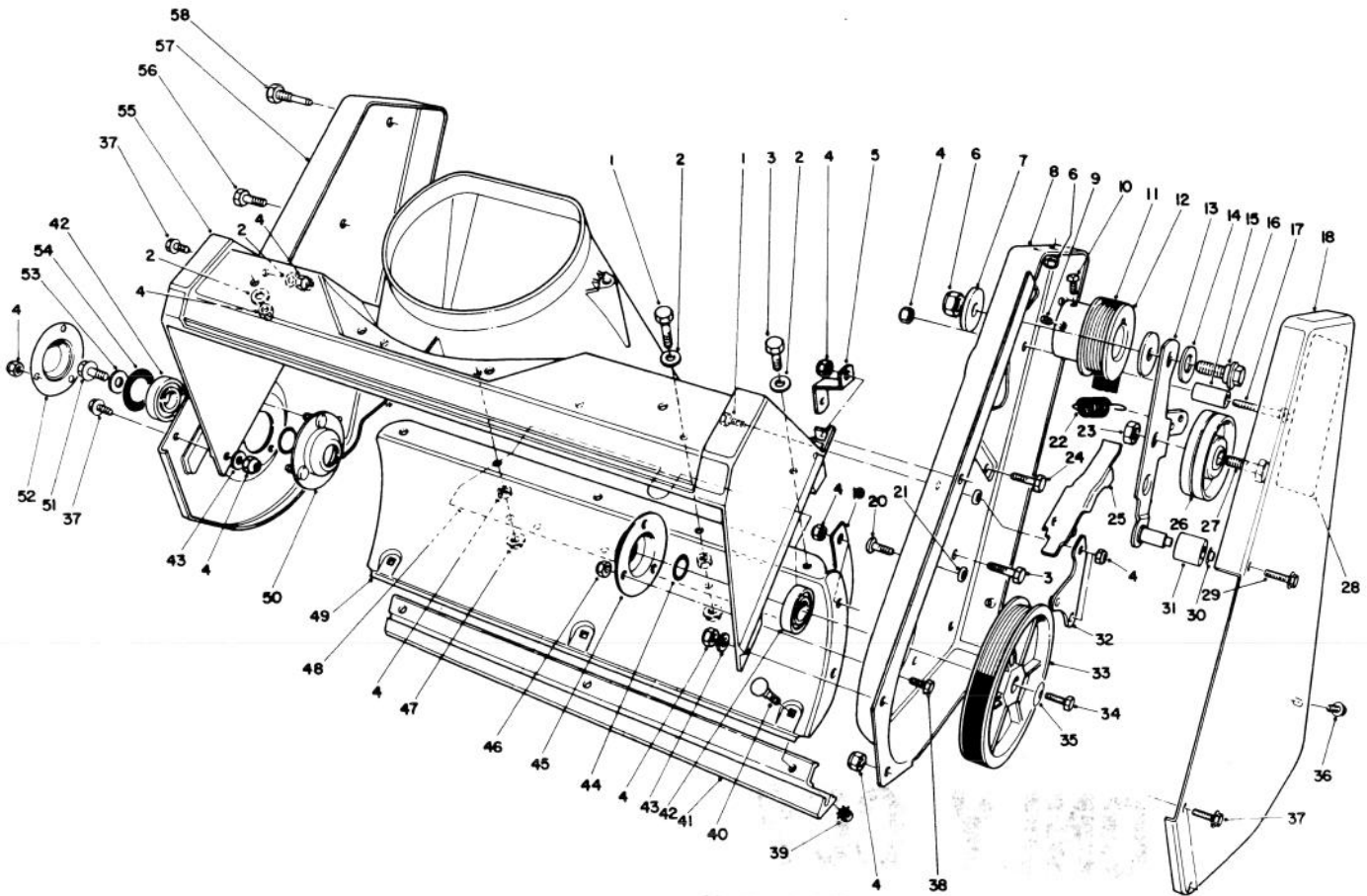
TORO[®]MODEL NO. 38185-490001 & UP
MODEL NO. 38186-490001 & UP**PARTS
CATALOG****CCR 2000[®] SNOWTHROWER**

C-0013

HOUSING ASSEMBLY

Ref. No.	Part No.	Description	No. Used
1	321-6	Screw - Hex. Hd.	3
2	3256-22	Washer	9
3	321-4	Screw - Hex. Hd.	5
4	3296-42	Nut - Lock	22
5	55-9430	Bracket - Housing	1
6	3296-29	Nut - Lock	3
7	5-4460	Washer	2
8	55-8851	Sideplate - L.H.	1
9	3245-41	Screw - Set	1
10	3241-7	Screw - Set, Sq. Hd.	1
11	55-9300	Belt - Drive	1
12	55-9180	Pulley - Engine	1
13	12-8279	Idler Arm Assembly (Incl. Ref. #30 & 31)	1
14	25-5640	Washer	1

Ref. No.	Part No.	Description	No. Used
15	55-9530	Guide - Drive Belt	1
16	27-0410	Screw - Shoulder	1
17	321-13	Screw - Hex. Hd.	1
18	55-9010	Cover - Drive	1
19	56-2610	Bracket - Lower Housing	1
20	3274-31	Screw - Button Hd.	1
21	55-9620	Spacer	3
22	55-9280	Spring - Extension	1
23	32152-2	Nut - Lock	1
24	322-3	Screw - Hex. Hd.	2
25	55-9550	Arm - Brake	1
26	55-9290	Pulley - Idler	1
27	323-29	Screw - Hex. Hd.	1
28	60-9480	Decal - Belt Routing	1
29	36-3860	Screw - Special	1

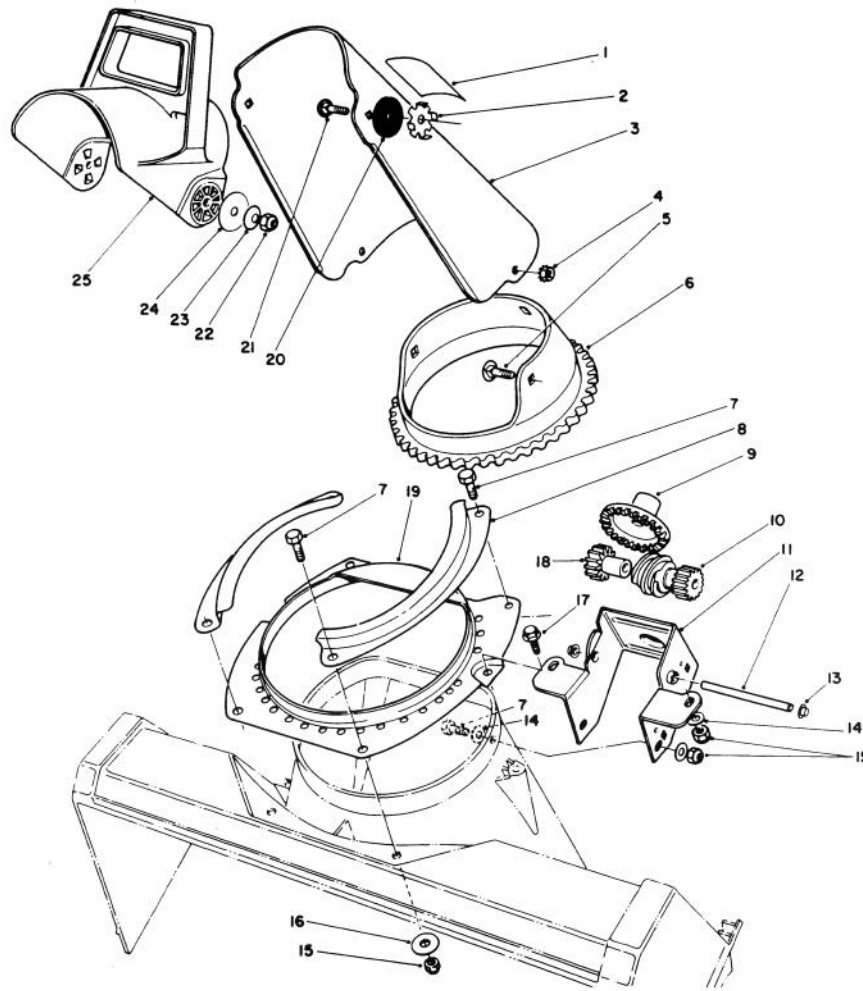


C-0013

HOUSING ASSEMBLY (CONTINUED)

Ref. No.	Part No.	Description	No. Used
30	32112-11	Pushnut	1
31	55-9520	Roller - Brake	1
32	55-9570	Pivot Plate Assembly	1
33	60-9320	Pulley - Rotor	1
34	321-30	Screw - Hex. Hd.	1
35	3290-456	Washer - Belleville	1
36	12-3270	Screw - Self Tapping	2
37	32105-15	Screw - Hex. Hd.	7
38	32105-8	Screw - Hex. Hd.	3
39	32149-2	Nut - Keps	3
40	3229-11	Screw - Carriage	3
41	55-8760	Scraper	1
42	38-7820	Bearing - Ball	2
43	3256-67	Washer	2
44	52-7280	Washer - Thrust	2

Ref. No.	Part No.	Description	No. Used
45	38-8620	Retainer - Bearing	1
46	3296-2	Nut - Lock	3
47	32128-10	Nut - Flange Lock	2
48	55-9512	Cover - Bottom	1
49	55-9220	Housing - Lower	1
50	52-9110	Flange - Bearing	1
51	3234-25	Screw - Hex. Flange Hd.	1
52	52-7290	Retainer - Bearing	1
53	3256-24	Washer	1
54	52-7270	Washer - Rubber	1
55	55-8700	Housing	1
56	322-43	Screw - Hex. Hd.	1
57	55-8840	Sideplate - R.H.	1
58	38-8211	Pin	1

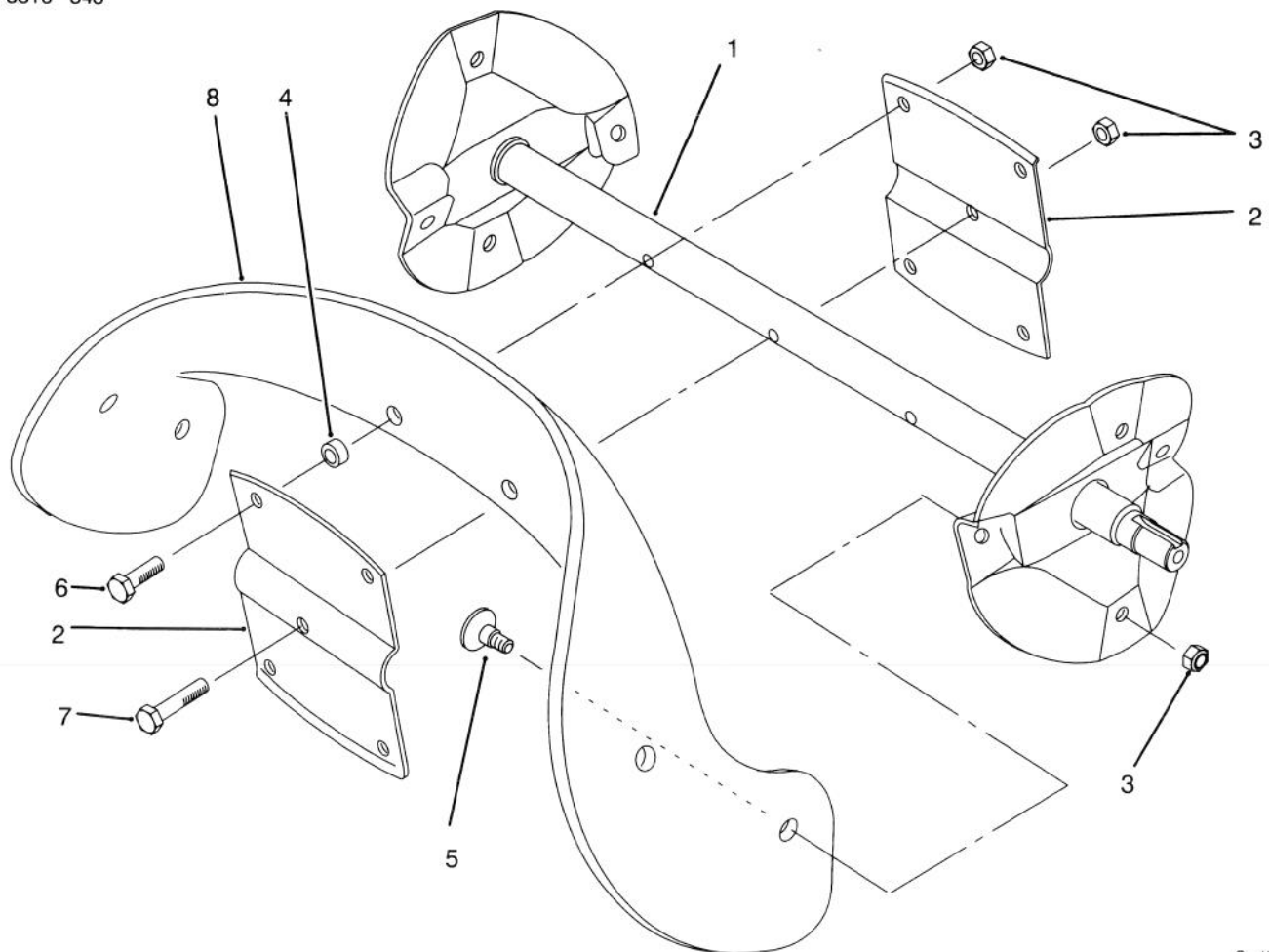


C-0014

DISCHARGE CHUTE ASSEMBLY

Ref. No.	Part No.	Description	No. Used	Ref. No.	Part No.	Description	No. Used
1	63-3740	Decal - Discharge (Model No. 38185)	1	12	55-9150	Shaft - Gear	1
*	63-3760	Decal - Discharge (Model No. 38186)	1	13	32112-11	Pushnut	2
2	55-8950	Plate - Friction	2	14	3256-22	Washer	6
3	12-8749	Chute - Discharge (Incl. Ref. #1: 63-3760)	1	15	3296-42	Nut - Lock	6
4	32149-1	Nut - Keps	3	16	3256-22	Washer	2
5	3230-18	Screw - Carriage	3	17	46-8092	Screw - Special	2
6	55-8720	Gear Ring - Chute	1	18	55-8750	Spacer - Spur Gear	1
7	321-4	Screw - Hex. Hd.	6	19	55-8921	Ring - Chute Support	1
8	55-8910	Retainer - Chute Ring	2	20	20-4320	Washer - Rubber	2
9	55-8740	Gear - Face	1	21	3230-22	Bolt - Carriage	2
10	55-8730	Gear - Worm/Spur	1	22	3296-29	Nut - Lock	2
11	84-5650	Bracket - Chute Gears	1	23	3290-456	Washer - Belleville	2
				24	3256-68	Washer	2
				25	56-2680	Deflector	1

*Not Illustrated

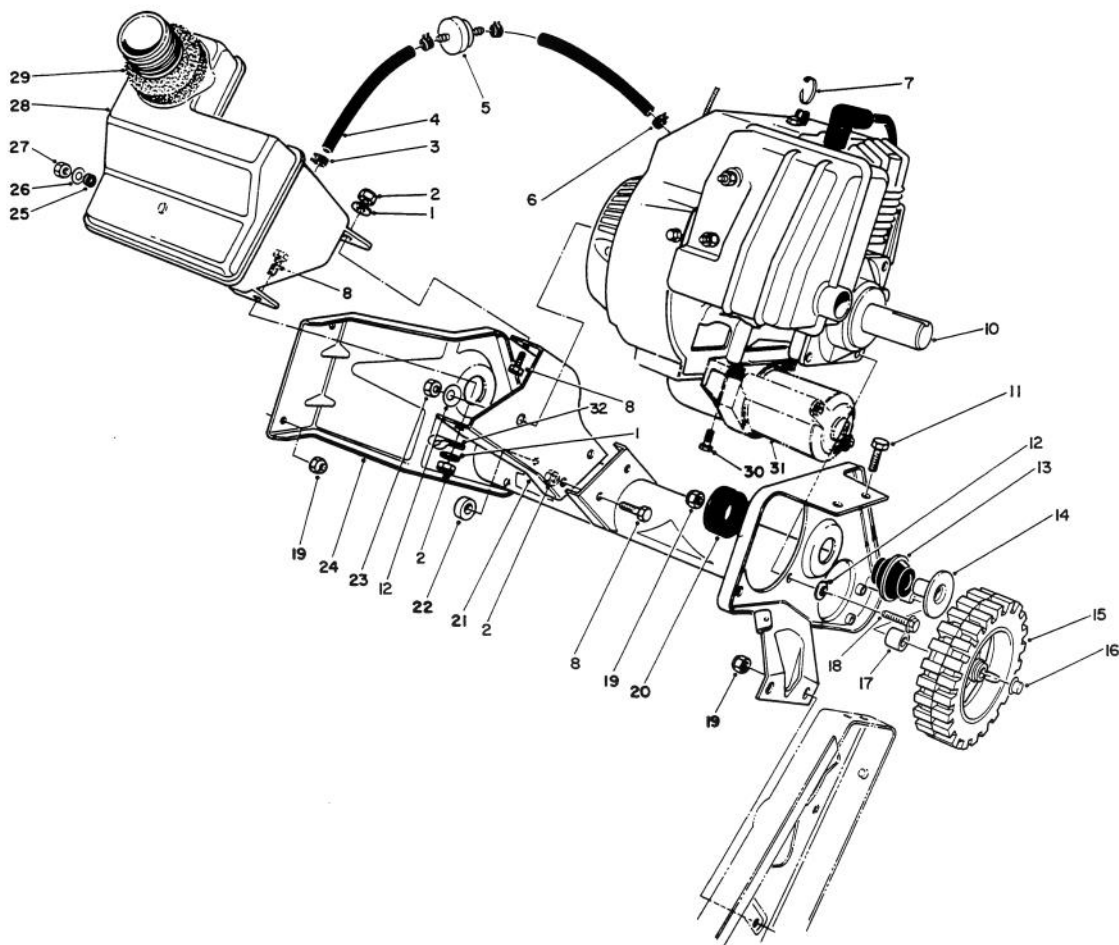


C-1755

ROTOR ASSEMBLY

Ref. No.	Part No.	Description	No. Used
1	55-9202	Rotor Shaft Assembly	1
2	66-6600	Rotor Half	2
3	3296-56	Nut - Lock	13
4	55-9370	Spacer	4

Ref. No.	Part No.	Description	No. Used
5	84-1971	Screw - Countersunk	8
6	321-4	Screw - Hex. Hd.	4
7	321-8	Screw - Hex. Hd.	1
8	88-0771	Blade - Rotor	2

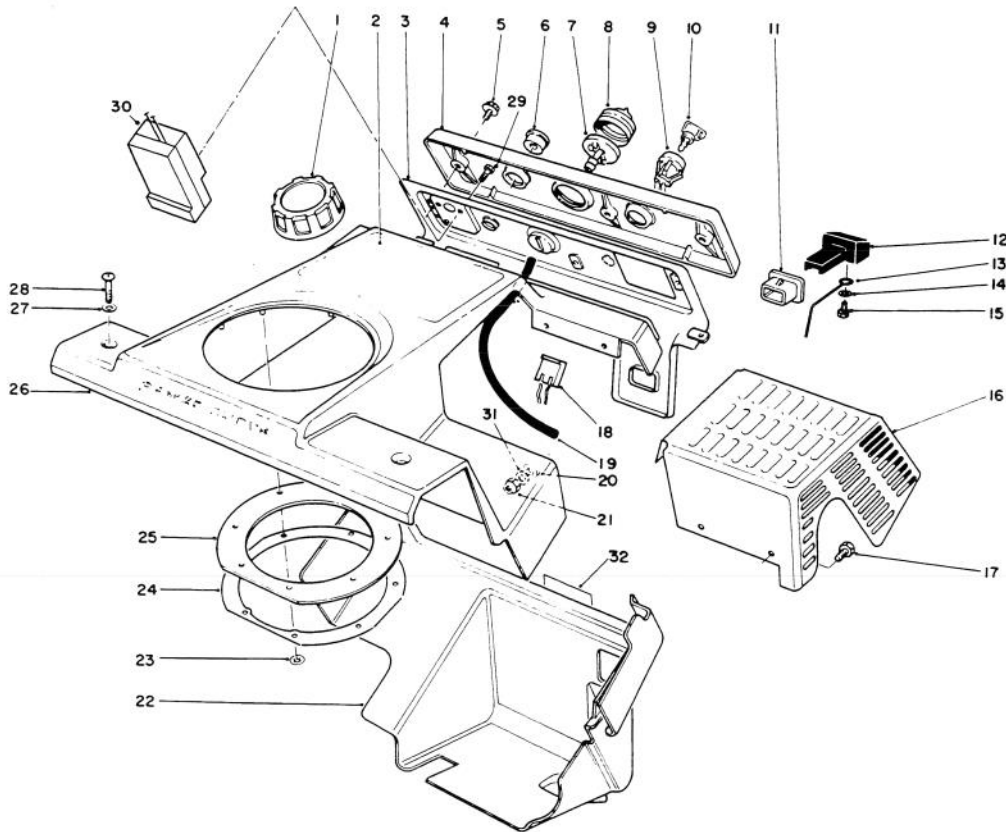


C-0026

ENGINE & MAIN FRAME ASSEMBLY

Ref. No.	Part No.	Description	No. Used	Ref. No.	Part No.	Description	No. Used
1	3256-22	Washer	2	18	81-0570	Bolt - Engine Mount	4
2	3296-42	Nut - Lock	4	19	3296-29	Nut - Lock	5
3	2412-86	Clamp - Fuel Line	3	20	55-9450	Mount - Load	2
4	49-2481	Line - Fuel	2	21	55-9070	Support - Recoil	1
5	56-6360	Filter - Fuel	1	22	66-6500	Spacer - Wheel	1
6	2412-80	Clamp - Fuel Line	1	23	81-0300	Nut - Hex	1
7	250-4	Cable Tie	1	24	63-3750	Frame - Assembly	1
8	321-4	Screw - Hex Hd.	4	25	237-89	Grommet	1
10	81-5240	Engine Assembly	1	26	3256-23	Washer	1
11	322-3	Screw - Hex Hd.	2	27	32152-8	Nut - Lock	1
12	3290-456	Washer - Belleville	5	28	13-2459	Tank - Fuel (Incl. Ref. #25)	1
13	55-9460	Mount - Rebound	2	29	55-9310	Seal - Tank	1
14	55-9470	Tube - Spacer	2	30	56-6380	Screw, M8	2
15	66-6510	Wheel	2	31*		Starter Motor Assembly	1
16	32112-14	Pushnut	2	32	2412-91	Clamp - Cable	1
17	66-6501	Spacer - Wheel	1				

*Note: See page 7



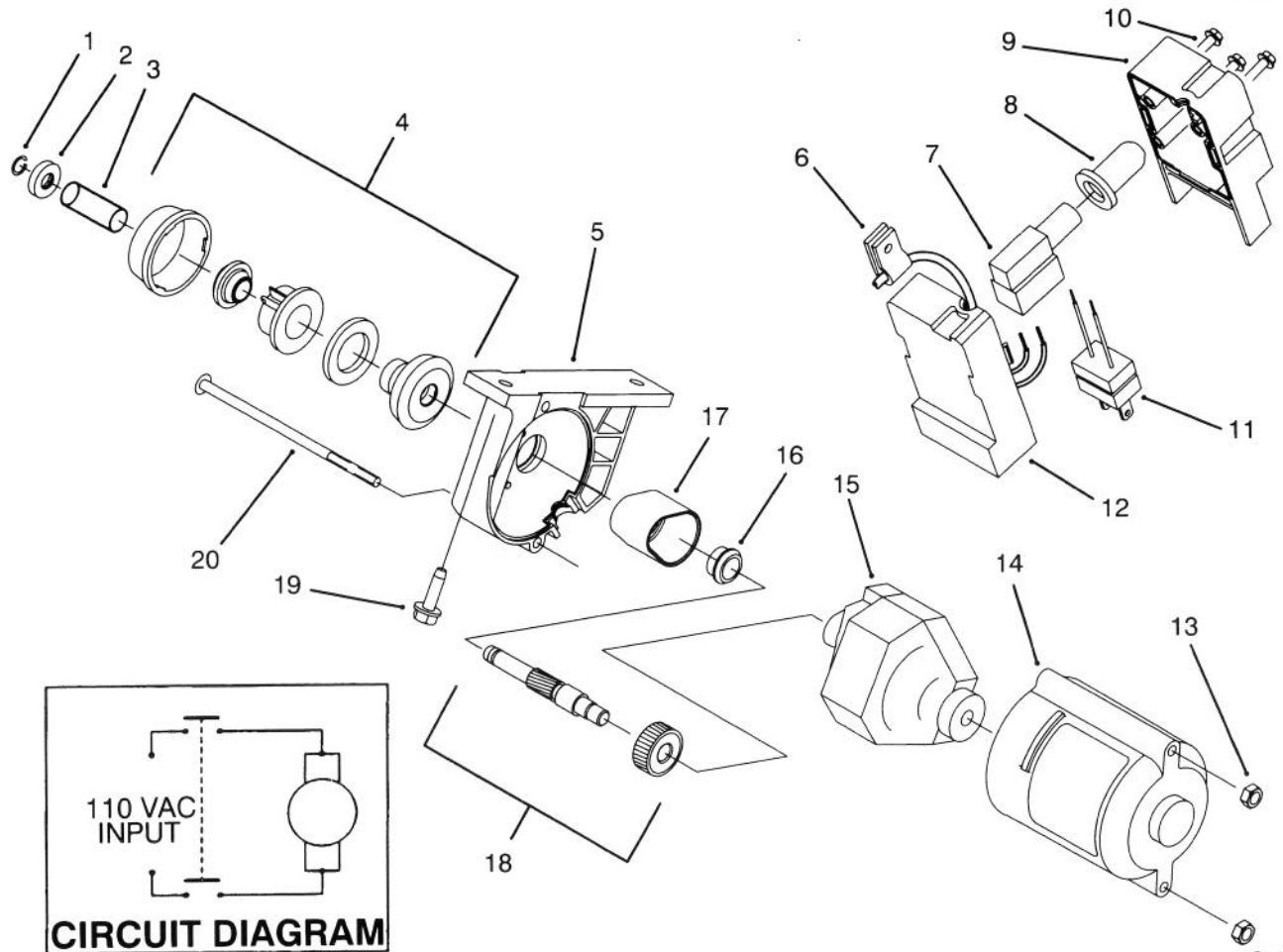
C-0027

CONTROL PANEL & SHROUDING ASSEMBLY

Ref. No.	Part No.	Description	No. Used	Ref. No.	Part No.	Description	No. Used
1	55-3573	Gas Cap Assembly	1	15	32144-111	Screw - Hex Hd.	1
2	77-5220	Decal - CCR-2000E	1	16	55-9210	Shield - Heat	1
3	12-4659	Panel - Control (Incl. Ref. #6-8 & 11)	1	17	32105-8	Screw - Hex Hd.	4
4	61-4410	Name Plate Control (Model No. 38185)	1	18	218-532	Connector Body	1
*	61-4470	Name Plate Control (Model No. 38186)	1	19	44-3171	Hose - Primer	1
5	32144-112	Screw	3	20	55-9660	Washer - Rubber	4
6	55-9410	Guide - Starter Rope	1	21	3296-12	Nut - Lock	4
7	44-2750	Body - Primer	1	22	55-8791	Shroud - Lower	1
8	66-7460	Bulb - Primer	1	23	3290-474	Pushnut	8
9	40-5940	Switch - Key	1	24	55-9540	Retainer - Chute Seal	1
10	63-8360	Key	1	25	55-9260	Seal - Chute	1
11	55-8820	Fitting - Choke Control	1	26	12-5949	Upper Shroud Assembly (Incl. Ref. #2 & 23-25)	1
12	55-8810	Control - Choke (Model No. 38185)	1	27	3256-22	Washer	2
*	55-8811	Control - Choke (Model No. 38186)	1	28	3250-32	Screw - Phillips	2
13	61-4651	Linkage - Choke	1	29	32144-27	Screw	3
14	3256-49	Washer	1	30†		Switch Assembly	1
				31	3256-14	Washer	4
				32	61-4790	Decal - Warning (Model No. 38186)	1

*Not Illustrated

†Note: See page 7

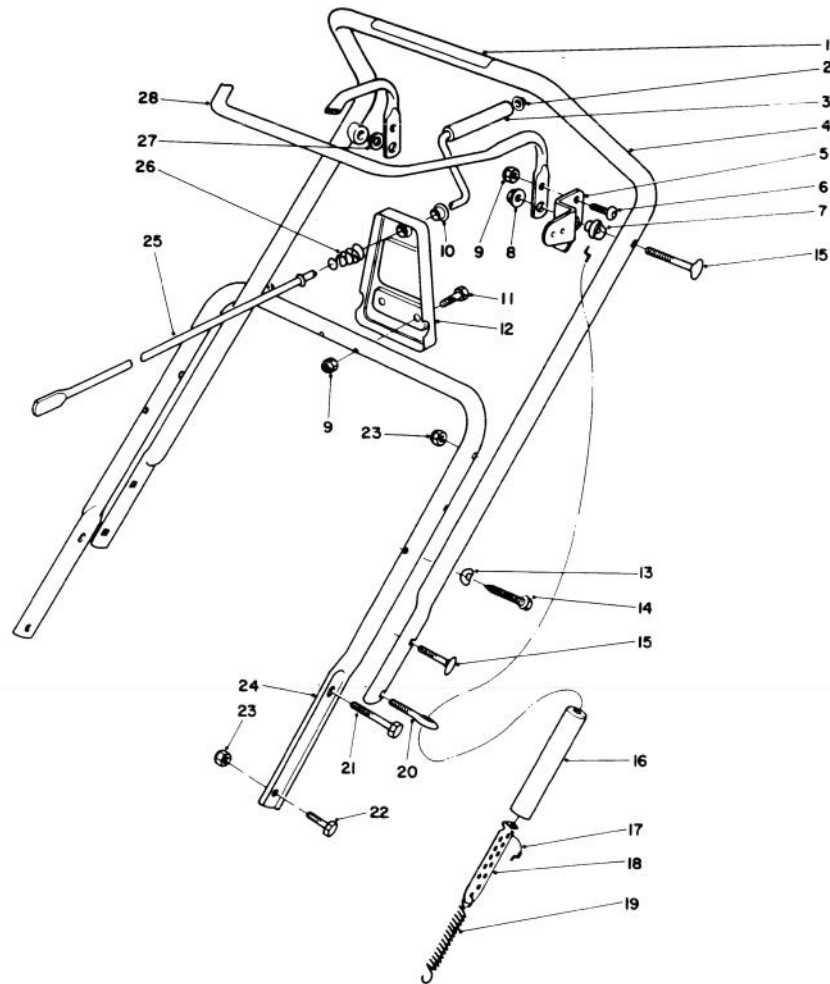


C-1738

STARTER MOTOR & SWITCH HOUSING ASSEMBLY

Ref. No.	Part No.	Description	No. Used
1	61-4680	Ring - Lock	1
2	61-4670	Stop - Pinion	1
3	61-4690	Spring - Anti Drift	3
4	61-4700	Pinion Assembly	1
5	80-0710	Housing - Mtg.	1
6	2412-91	R-Clamp	1
7	61-4820	Switch - Starter	1
8	61-4810	Boot - Switch	1
9	80-3740	Cap - Switch Housing	1
10	32144-27	Screw - Self Tap	3
11	36-8370	Plug - Power	1

Ref. No.	Part No.	Description	No. Used
12	80-3730	Base - Switch Housing	1
13	3296-2	Nut - Lock	2
14	83-7350	Housing - Motor	1
15	70-7801	Starter Motor Assembly	1
16	70-7900	Bushing - upper	1
17	70-7850	Cover - Gear	1
18	92-6003	Shaft & Gear Assembly	1
19	56-6380	Screw - Mounting	2
20	32144-101	Screw - Phillips Pan Hd.	2

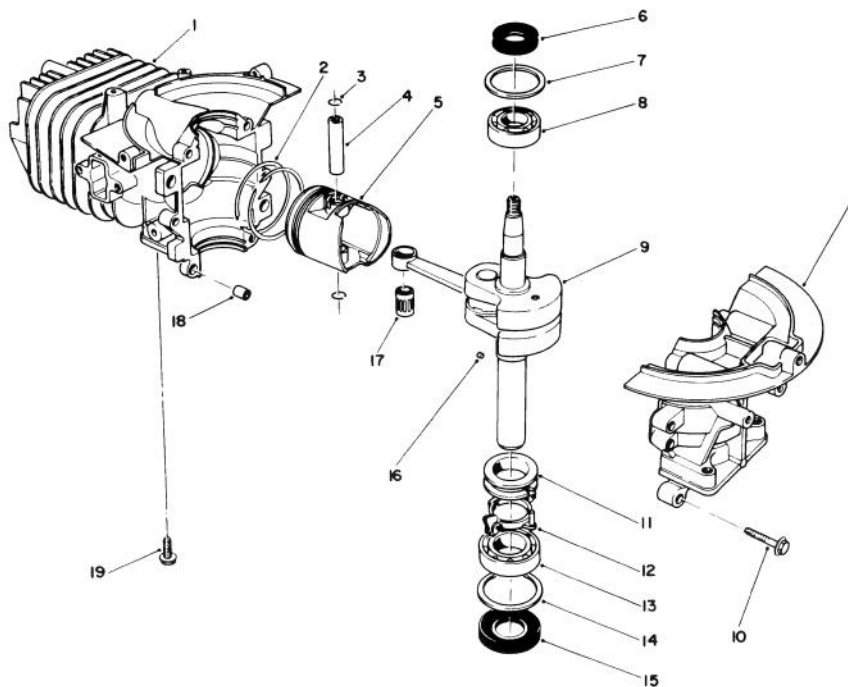


C-0018

HANDLE ASSEMBLY

Ref. No.	Part No.	Description	No. Used	Ref. No.	Part No.	Description	No. Used
1	66-6870	Decal - Rotor Drive (Model 38185)	1	14	61-8640	Screw - Hex. Hd.	2
	60-9470	Decal - Rotor Drive (Model 38186)	1	15	17-9424	Screw - Handle	5
2	3290-320	Pushnut	1	16	55-9390	Cover - Spring	1
3	66-6540	Grip - Crank Handle	1	17	55-9321	Cable - Clutch	1
4	12-5939	Upper Handle Assembly (Incl. ref. #1, Model 38185)	1	18	55-9380	Adjuster - Clutch Cable	1
*	14-9369	Upper Handle Assembly (Incl. ref. #1, Model 38186)	1	19	55-9270	Spring - Extension	1
5	55-9100	Arm - Clutch Cable	1	20	55-9420	Bolt - Eye	1
6	3274-31	Screw - Button Hd.	1	21	322-9	Screw - Hex. Hd.	2
7	55-9340	Spacer - Control Bar	2	22	322-3	Screw - Hex. Hd.	2
8	32111-8	Nut - Acorn	2	23	3296-29	Nut - Lock	6
9	3296-42	Nut - Lock	3	24	55-9121	Handle - Lower (Model 38185)	1
10	256-249	Nyliner	1	*	55-9120	Handle - Lower (Model 38186)	1
11	321-13	Screw - Hex. Hd.	2	25	55-9140	Rod - Chute Crank	1
12	55-9090	Support - Chute Crank	1	26	55-9440	Spring - Compression	1
13	3-7501	Washer - Curved	2	27	55-9670	Washer - Rubber	1
				28	55-9130	Bar - Control	1

*Not Illustrated

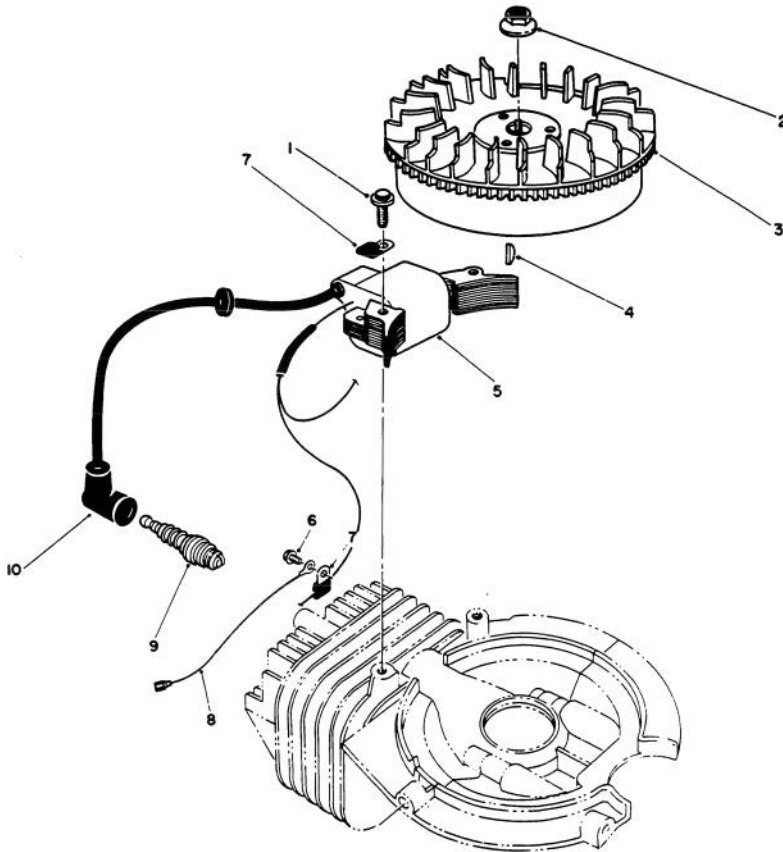


C-0019

SHORT BLOCK ASSEMBLY (Engine Model 47PP3-5)

Ref. No.	Part No.	Description	No. Used	Ref. No.	Part No.	Description	No. Used
1	81-4590	Cylinder/Crankcase Assembly	1	12	81-0750	Bracket - Centrifugal Governor	1
2	81-0590	Ring Set	1	13	81-0700	Bearing - Lower	1
3	81-0620	Circlip	2	14	81-0730	Washer - Thrust	1
4	82-0600	Pin - Wrist	1	15	81-0740	Seal - Oil	1
5	81-0580	Piston	1	16	81-0760	Pin - Governor	1
6	81-0720	Seal - Oil	1	17	81-0610	Pin - Wrist	1
7	81-0710	Washer - Thrust	1	18	81-0520	Dowel Pin - Crankcase	2
8	81-0690	Bearing - Upper	1	19	81-0570	Bolt	4
9	81-5700	Crankshaft	1	*	12-5909	Short Block (Incl. Ref. #1-19)	1
10	81-0540	Bolt	5				
11	81-0770	Collar - Governor	1				

*Not Illustrated

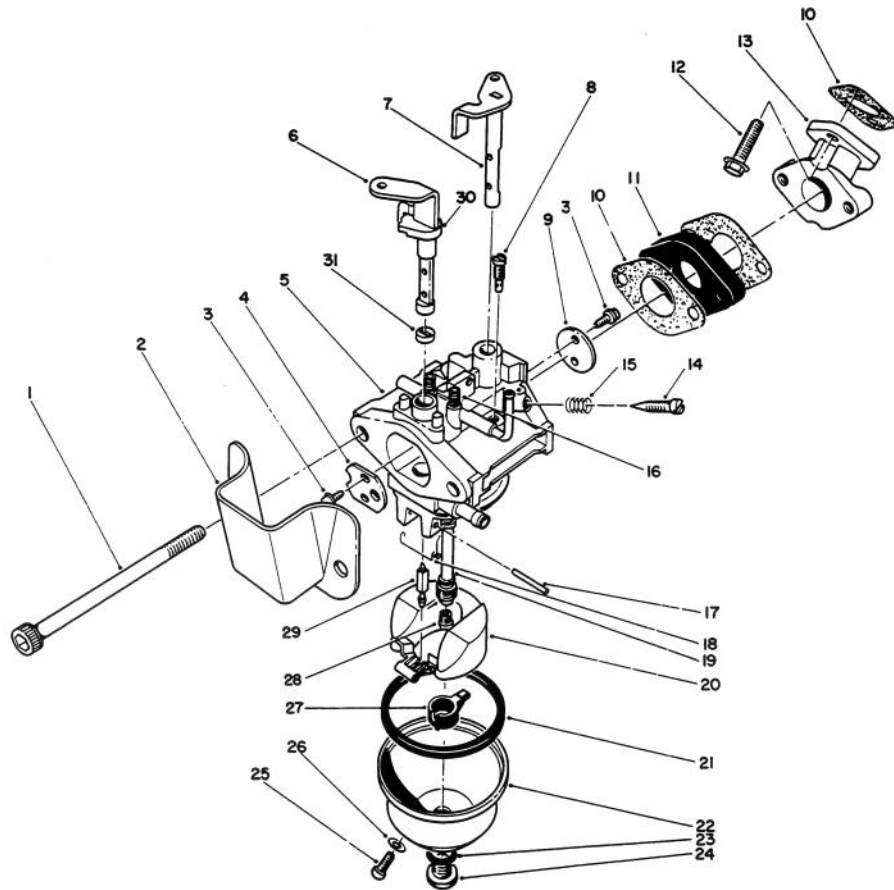


C-0029

FLYWHEEL & MAGNETO ASSEMBLY (Engine Model 47PP3-5)

Ref. No.	Part No.	Description	No. Used	Ref. No.	Part No.	Description	No. Used
1	81-5710	Screw - Socket Hd. Cap	2	7	81-1480	Clamp	2
2	81-1330	Nut - Hex. Flange	1	8	81-2860	Wire - Ground	1
3	81-4620	Flywheel	1	9	81-0181	Spark Plug	1
4	81-2370	Woodruff Key	1	10	81-1500	Cover - Spark Plug	1
5	81-4630	Coil - Magneto	1	*	41-7650	Puller - Flywheel	1
6	53-1340	Bolt	1				

*Not Illustrated

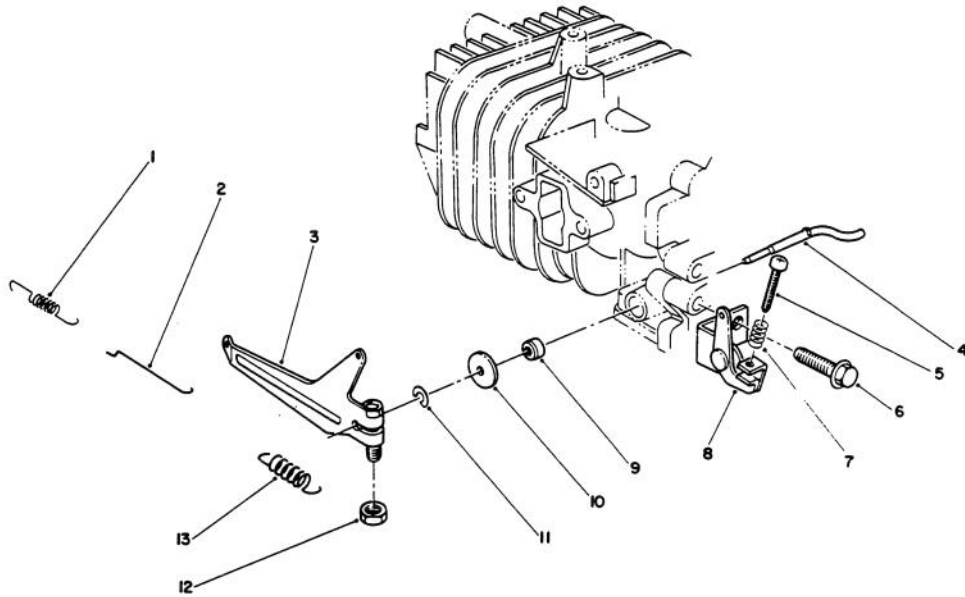


C-0021

CARBURETOR ASSEMBLY (Engine Model 47PP3-5)

Ref. No.	Part No.	Description	No. Used	Ref. No.	Part No.	Description	No. Used
1	81-0450	Screw	2	21	81-2630	Gasket - Float Bowl	1
2	81-2700	Spitcup	1	22	81-2640	Bowl - Float	1
3	81-2710	Screw	4	23	81-2650	Gasket - Bowl Screen	1
4	81-2720	Valve - Choke	1	24	81-2660	Screw - Float Bowl	1
5		Body - Carburetor	1	25	81-2670	Screw - Drain	1
6	81-5510	Shaft - Choke (Incl. Ref. #30 & 31)	1	26	81-2680	Gasket - Drain Screw	1
7	81-2920	Shaft - Throttle	1	27	81-4930	Spacer - Float	1
8	81-2930	Jet - Pilot	1	28	81-1040	Jet - Main (#80)	1
9	81-2940	Valve - Throttle	1	*	81-1940	Jet - Main (#73.6)	1
10	81-2570	Gasket - Carburetor	3	29	81-4700	Needle	1
11	81-0460	Insulator - Carburetor	1	30	81-5520	Ring - Upper Choke	1
12	50-6350	Bolt	2	31	81-5530	Ring - Lower Choke	1
13	81-0470	Manifold - Intake	1	*	81-4690	Carburetor Assembly Complete	1
14	50-2360	Screw - Pilot	1	*	81-2910	Choke Shaft Assembly (Incl. Ref. #6, 30 & 31)	1
15	81-2580	Spring - Pilot Screw	1	*	81-5820	Needle Valve Seat Kit	1
16	81-2590	Spring - Choke Detent	2	*	92-6002	Carburetor Kit (Incl. Ref. #10, 18, 21, 26, 31, & Part No. 81-8520)	1
17	81-2600	Pin - Hinge	1				
18	81-2610	Spring - Torsion	1				
19	81-2740	Nozzle - Main	1				
20	81-4920	Float	1				

*Not Illustrated

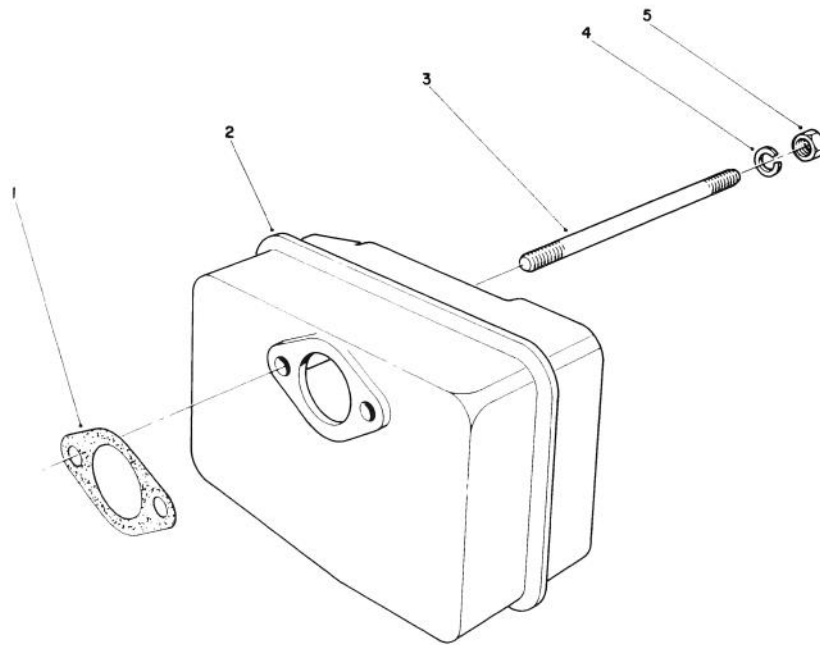


C-0022

GOVERNOR ASSEMBLY (Engine Model 47PP3-5)

Ref. No.	Part No.	Description	No. Used
1	81-0440	Spring - Carburetor	1
2	81-0430	Rod - Carburetor	1
3	81-4650	Arm - Governor	1
4	81-2880	Shaft - Governor	1
5	81-2890	Screw	1
6	81-0540	Bolt	1
7	81-2900	Spring - Compression	1

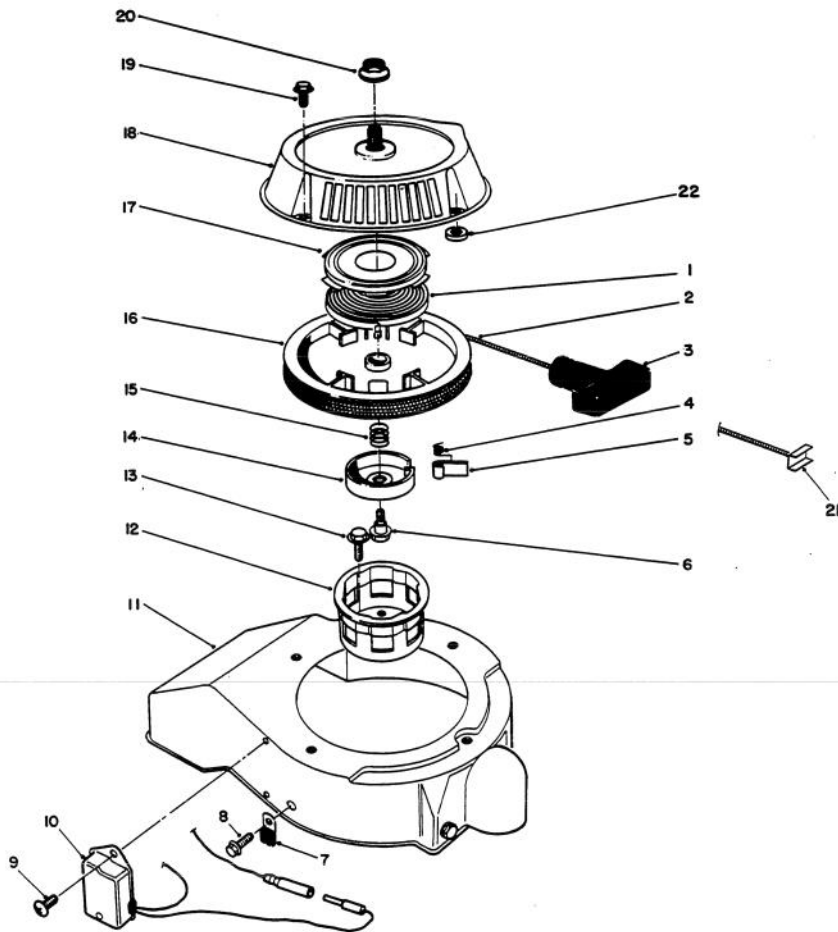
Ref. No.	Part No.	Description	No. Used
8	81-0370	Bracket - Governor	1
		Spring	1
9	81-0850	Seal - Oil	1
10	81-0860	Washer	1
11	81-0870	E-Ring	1
12	81-0900	Nut - Hex	1
13	81-0360	Spring - Governor	1



C-0023

MUFFLER ASSEMBLY (Engine Model 47PP3-5)

Ref. No.	Part No.	Description	No. Used	Ref. No.	Part No.	Description	No. Used
1	81-1080	Gasket - Muffler	1	4	81-1120	Washer - Lock	2
2	81-0490	Muffler	1	5	81-1110	Nut - Hex	2
3	81-0500	Stud - Muffler	2				



C-0030

RECOIL STARTER ASSEMBLY (Engine Model 47PP3-5)

Ref. No.	Part No.	Description	No. Used
1	81-1200	Spring - Recoil	1
2	81-1270	Rope	1
3	81-1630	Handle - Recoil	1
4	81-1220	Spring - Dog	1
5	81-1230	Dog - Starter	1
6	81-1260	Bolt	1
7	55-3070	Clamp - Magneto Wire	1
8	53-1340	Bolt	3
9	81-4660	Screw	2
10	81-4640	Xstar Module - Magneto	1
11	81-4610	Shroud - Blower	1
12	81-1290	Cup - Starter	1
13	81-1300	Bolt	3
14	81-1250	Retainer - Dog	1

Ref. No.	Part No.	Description	No. Used
15	81-1240	Spring - Compression	1
16	81-1210	Reel - Rope Pulley	1
17		Retainer - Recoil Spring	1
18	81-0290	Case - Recoil	1
19	81-0390	Bolt	4
20	81-0300	Nut - Flange Lock	1
21	81-5760	Insert Handle	1
*	81-0280	Recoil Assembly (Incl. Ref. #1-6 & 14-18)	1
22	55-9620	Spacer	1
*	81-2300	Recoil Spring & Retainer Assembly (Incl. Ref. #1 & 17)	1

*Not Illustrated

TORO PART NUMBER INDEX

3316-343

Part No.	Description	Pg. Ref.		Part No.	Description	Pg. Ref.	
		No.	Qty.			No.	Qty.
3-7501	Washer - Curved	8	13 2	55-9260	Seal - Chute	6	25 1
5-4460	Washer	1	7 2	55-9270	Spring - Extension	8	19 1
12-3270	Screw - Self Tapping	2	36 2	55-9280	Spring - Extension	1	22 1
12-4659	Panel - Control	6	3 1	55-9290	Pulley - Idler	1	26 1
12-5909	Short Block	9	* 1	55-9300	Belt - Drive	1	11 1
12-5939	Upper Handle Assembly	8	4 1	55-9310	Seal - Tank	5	29 1
12-5949	Upper Shroud Assembly	6	26 1	55-9321	Cable - Clutch	8	17 1
12-8279	Idler Arm Assembly	1	13 1	55-9340	Spacer - Control Bar	8	7 2
12-8749	Chute - Discharge	3	3 1	55-9370	Spacer	4	4 4
13-2459	Tank - Fuel	5	28 1	55-9380	Adjuster - Clutch Cable	8	18 1
14-9369	Upper Handle Assembly	8	* 1	55-9390	Cover - Spring	8	16 1
17-9424	Screw - Handle	8	15 5	55-9410	Guide - Starter Rope	6	6 1
20-4320	Washer - Rubber	3	20 2	55-9420	Bolt - Eye	8	20 1
25-5640	Washer	1	14 1	55-9430	Bracket - Housing	1	5 1
27-0410	Screw - Shoulder	1	16 1	55-9440	Spring - Compression	8	26 1
36-3860	Screw - Special	1	29 1	55-9450	Mount - Load	5	20 2
36-8370	Plug - Power	7	11 1	55-9460	Mount - Rebound	5	13 2
38-7820	Bearing - Ball	2	42 2	55-9470	Tube - Spacer	5	14 2
38-8211	Pin	2	58 1	55-9512	Cover - Bottom	2	48 1
38-8620	Retainer - Bearing	2	45 1	55-9520	Roller - Brake	2	31 1
40-5940	Switch - Key	6	9 1	55-9530	Guide - Drive Belt	1	15 1
41-7650	Puller - Flywheel	10	* 1	55-9540	Retainer - Chute Seal	6	24 1
44-2750	Body - Primer	6	7 1	55-9550	Arm - Brake	1	25 1
44-3171	Hose - Primer	6	19 1	55-9570	Pivot Plate Assembly	2	32 1
46-8092	Screw - Special	3	17 2	55-9620	Spacer	14	22 1
49-2481	Line - Fuel	5	4 2	55-9620	Spacer	1	21 3
50-2360	Screw - Pilot	11	14 1	55-9660	Washer - Rubber	6	20 4
50-6350	Bolt	11	12 2	55-9670	Washer - Rubber	8	27 1
52-7270	Washer - Rubber	2	54 1	56-2610	Bracket - Lower Housing	1	19 1
52-7280	Washer - Thrust	2	44 2	56-2680	Deflector	3	25 1
52-7290	Retainer - Bearing	2	52 1	56-6360	Filter - Fuel	5	5 1
52-9110	Flange - Bearing	2	50 1	56-6380	Screw - Mounting	7	19 2
53-1340	Bolt	10	6 1	56-6380	Screw, M8	5	30 2
53-1340	Bolt	14	8 3	60-9320	Pulley - Rotor	2	33 1
55-3070	Clamp - Magneto Wire	14	7 1	60-9470	Decal - Rotor Drive	8	1
55-3573	Gas Cap Assembly	6	1 1	60-9480	Decal - Belt Routing	1	28 1
55-8700	Housing	2	55 1	61-4410	Name Plate Control	6	4 1
55-8720	Gear Ring - Chute	3	6 1	61-4470	Name Plate Control	6	* 1
55-8730	Gear - Worm/Spur	3	10 1	61-4651	Linkage - Choke	6	13 1
55-8740	Gear - Face	3	9 1	61-4670	Stop - Pinion	7	2 1
55-8750	Spacer - Spur Gear	3	18 1	61-4680	Ring - Lock	7	1 1
55-8760	Scraper	2	41 1	61-4690	Spring - Anti Drift	7	3 3
55-8791	Shroud - Lower	6	22 1	61-4700	Pinion Assembly	7	4 1
55-8810	Control - Choke	6	12 1	61-4790	Decal - Warning	6	32 1
55-8811	Control - Choke	6	* 1	61-4810	Boot - Switch	7	8 1
55-8820	Fitting - Choke Control	6	11 1	61-4820	Switch - Starter	7	7 1
55-8840	Sideplate - R.H.	2	57 1	61-8640	Screw - Hex. Hd.	8	14 2
55-8851	Sideplate - L.H.	1	8 1	63-3740	Decal - Discharge	3	1 1
55-8910	Retainer - Chute Ring	3	8 2	63-3750	Frame - Assembly	5	24 1
55-8921	Ring - Chute Support	3	19 1	63-3760	Decal - Discharge	3	* 1
55-8950	Plate - Friction	3	2 2	63-8360	Key	6	10 1
55-9010	Cover - Drive	1	18 1	66-6500	Spacer - Wheel	5	22 1
55-9070	Support - Recoil	5	21 1	66-6501	Spacer - Wheel	5	17 1
55-9090	Support - Chute Crank	8	12 1	66-6510	Wheel	5	15 2
55-9100	Arm - Clutch Cable	8	5 1	66-6540	Grip - Crank Handle	8	3 1
55-9120	Handle - Lower	8	* 1	66-6600	Rotor Half	4	2 2
55-9121	Handle - Lower	8	24 1	66-6870	Decal - Rotor Drive	8	1 1
55-9130	Bar - Control	8	28 1	66-7460	Bulb - Primer	6	8 1
55-9140	Rod - Chute Crank	8	25 1	70-7801	Starter Motor Assembly	7	15 1
55-9150	Shaft - Gear	3	12 1	70-7850	Cover - Gear	7	17 1
55-9180	Pulley - Engine	1	12 1	70-7900	Bushing - Upper	7	16 1
55-9202	Rotor Shaft Assembly	4	1 1	77-5220	Decal - CCR-2000E	6	2 1
55-9210	Shield - Heat	6	16 1	80-0710	Housing - Mtg.	7	5 1
55-9220	Housing - Lower	2	49 1	80-3730	Base - Switch Housing	7	12 1

*Not Illustrated

TORO PART NUMBER INDEX (Cont.)

Part No.	Description	Pg. Ref.		Part No.	Description	Pg. Ref.	
		No.	Qty.			No.	Qty.
80-3740	Cap - Switch Housing	7	9 1	81-2630	Gasket - Float Bowl	11	21 1
81-0181	Spark Plug	10	9 1	81-2640	Bowl - Float	11	22 1
81-0280	Recoil Assembly	14	* 1	81-2650	Gasket - Bowl Screen	11	23 1
81-0290	Case - Recoil	14	18 1	81-2660	Screw - Float Bowl	11	24 1
81-0300	Nut - Flange Lock	14	20 1	81-2670	Screw - Drain	11	25 1
81-0300	Nut - Hex	5	23 1	81-2680	Gasket - Drain Screw	11	26 1
81-0360	Spring - Governor	12	13 1	81-2700	Spitcup	11	2 1
81-0370	Bracket - Governor	12	8 1	81-2710	Screw	11	3 4
81-0390	Bolt	14	19 4	81-2720	Valve - Choke	11	4 1
81-0430	Rod - Carburetor	12	2 1	81-2740	Nozzle - Main	11	19 1
81-0440	Spring - Carburetor	12	1 1	81-2860	Wire - Ground	10	8 1
81-0450	Screw	11	1 2	81-2880	Shaft - Governor	12	4 1
81-0460	Insulator - Carburetor	11	11 1	81-2890	Screw	12	5 1
81-0470	Manifold - Intake	11	13 1	81-2900	Spring - Compression	12	7 1
81-0490	Muffler	13	2 1	81-2910	Choke Shaft Assembly	11	* 1
81-0500	Stud - Muffler	13	3 2	81-2920	Shaft - Throttle	11	7 1
81-0520	Dowel Pin - Crankcase	9	18 2	81-2930	Jet - Pilot	11	8 1
81-0540	Bolt	12	6 1	81-2940	Valve - Throttle	11	9 1
81-0540	Bolt	9	10 5	81-4590	Cylinder/Crankcase	9	1 1
81-0570	Bolt	9	19 4	81-4610	Shroud - Blower	14	11 1
81-0570	Bolt - Engine Mount	5	18 4	81-4620	Flywheel	10	3 1
81-0580	Piston	9	5 1	81-4630	Coil - Magneto	10	5 1
81-0590	Ring Set	9	2 1	81-4640	Xstar Module - Magneto	14	10 1
81-0610	Pin - Wrist	9	17 1	81-4650	Arm - Governor	12	3 1
81-0620	Circlip	9	3 2	81-4660	Screw	14	9 2
81-0690	Bearing - Upper	9	8 1	81-4690	Carburetor Assembly	11	* 1
81-0700	Bearing - Lower	9	13 1	81-4700	Needle	11	29 1
81-0710	Washer - Thrust	9	7 1	81-4920	Float	11	20 1
81-0720	Seal - Oil	9	6 1	81-4930	Spacer - Float	11	27 1
81-0730	Washer - Thrust	9	14 1	81-5240	Engine Assembly	5	10 1
81-0740	Seal - Oil	9	15 1	81-5510	Shaft - Choke	11	6 1
81-0750	Bracket - Centrifugal	9	12 1	81-5520	Ring - Upper Choke	11	30 1
81-0760	Pin - Governor	9	16 1	81-5530	Ring - Lower Choke	11	31 1
81-0770	Collar - Governor	9	11 1	81-5700	Crankshaft	9	9 1
81-0850	Seal - Oil	12	9 1	81-5710	Screw - Socket Hd. Cap	10	1 2
81-0860	Washer	12	10 1	81-5760	Insert Handle	14	21 1
81-0870	E-Ring	12	11 1	81-5820	Needle Valve Seat Kit	11	* 1
81-0900	Nut - Hex	12	12 1	82-0600	Pin - Wrist	9	4 1
81-1040	Jet - Main (#80)	11	28 1	83-7350	Housing - Motor	7	14 1
81-1080	Gasket - Muffler	13	1 1	84-1971	Screw - Countersunk	4	5 8
81-1110	Nut - Hex	13	5 2	84-5650	Bracket - Chute Gears	3	11 1
81-1120	Washer - Lock	13	4 2	88-0771	Blade - Rotor	4	8 2
81-1200	Spring - Recoil	14	1 1	92-6002	Carburetor Kit	11	* 1
81-1210	Reel - Rope Pulley	14	16 1	92-6003	Shaft & Gear Assembly	7	18 1
81-1220	Spring - Dog	14	4 1	218-532	Connector Body	6	18 1
81-1230	Dog - Starter	14	5 1	237-89	Grommet	5	25 1
81-1240	Spring - Compression	14	15 1	2412-80	Clamp - Fuel Line	5	6 1
81-1250	Retainer - Dog	14	14 1	2412-86	Clamp - Fuel Line	5	3 3
81-1260	Bolt	14	6 1	2412-91	Clamp - Cable	5	32 1
81-1270	Rope	14	2 1	2412-91	R-Clamp	7	6 1
81-1290	Cup - Starter	14	12 1	250-4	Cable Tie	5	7 1
81-1300	Bolt	14	13 3	256-249	Nyliner	8	10 1
81-1330	Nut - Hex. Flange	10	2 1	321-4	Screw - Hex Hd.	5	8 4
81-1480	Clamp	10	7 2	321-4	Screw - Hex. Hd.	1	3 5
81-1500	Cover - Spark Plug	10	10 1	321-4	Screw - Hex. Hd.	3	7 6
81-1630	Handle - Recoil	14	3 1	321-4	Screw - Hex. Hd.	4	6 4
81-1940	Jet - Main (#73.6)	11	* 1	321-6	Screw - Hex. Hd.	1	1 3
81-2300	Recoil Spring &	14	* 1	321-8	Screw - Hex. Hd.	4	7 1
81-2370	Woodruff Key	10	4 1	321-13	Screw - Hex. Hd.	8	11 2
81-2570	Gasket - Carburetor	11	10 3	321-13	Screw - Hex. Hd.	1	17 1
81-2580	Spring - Pilot Screw	11	15 1	321-30	Screw - Hex. Hd.	2	34 1
81-2590	Spring - Choke Detent	11	16 2	322-3	Screw - Hex Hd.	5	11 2
81-2600	Pin - Hinge	11	17 1	322-3	Screw - Hex. Hd.	8	22 2
81-2610	Spring - Torsion	11	18 1	322-3	Screw - Hex. Hd.	1	24 2

*Not Illustrated

TORO PART NUMBER INDEX (Cont.)

3316-343

Part No.	Description	Pg. No.	Ref. No.	Qty.	Part No.	Description	Pg. No.	Ref. No.	Qty.
322-9	Screw - Hex. Hd.	8	21	2	3296-12	Nut - Lock	6	21	4
322-43	Screw - Hex. Hd.	2	56	1	3296-29	Nut - Lock	1	6	3
323-29	Screw - Hex. Hd.	1	27	1	3296-29	Nut - Lock	5	19	5
3229-11	Screw - Carriage	2	40	3	3296-29	Nut - Lock	3	22	2
3230-18	Screw - Carriage	3	5	3	3296-29	Nut - Lock	8	23	6
3230-22	Bolt - Carriage	3	21	2	3296-42	Nut - Lock	5	2	4
3234-25	Screw - Hex. Flange Hd.	2	51	1	3296-42	Nut - Lock	1	4	22
3241-7	Screw - Set, Sq. Hd.	1	10	1	3296-42	Nut - Lock	8	9	3
3245-41	Screw - Set	1	9	1	3296-42	Nut - Lock	3	15	6
3250-32	Screw - Phillips	6	28	2	3296-56	Nut - Lock	4	3	13
3256-14	Washer	6	31	4	32105-8	Screw - Hex Hd.	6	17	4
3256-22	Washer	5	1	2	32105-8	Screw - Hex. Hd.	2	38	3
3256-22	Washer	1	2	9	32105-15	Screw - Hex. Hd.	2	37	7
3256-22	Washer	3	14	6	32111-8	Nut - Acorn	8	8	2
3256-22	Washer	3	16	2	32112-11	Pushnut	3	13	2
3256-22	Washer	6	27	2	32112-11	Pushnut	2	30	1
3256-23	Washer	5	26	1	32112-14	Pushnut	5	16	2
3256-24	Washer	2	53	1	32128-10	Nut - Flange Lock	2	47	2
3256-49	Washer	6	14	1	32144-27	Screw	6	29	3
3256-67	Washer	2	43	2	32144-27	Screw - Self Tap	7	10	3
3256-68	Washer	3	24	2	32144-101	Screw - Phillips Pan Hd.	7	20	2
3274-31	Screw - Button Hd.	8	6	1	32144-111	Screw - Hex Hd.	6	15	1
3274-31	Screw - Button Hd.	1	20	1	32144-112	Screw	6	5	3
3290-320	Pushnut	8	2	1	32149-1	Nut - Keps	3	4	3
3290-456	Washer - Belleville	5	12	5	32149-2	Nut - Keps	2	39	3
3290-456	Washer - Belleville	3	23	2	32152-2	Nut - Lock	1	23	1
3290-456	Washer - Belleville	2	35	1	32152-8	Nut - Lock	5	27	1
3290-474	Pushnut	6	23	8					
3296-2	Nut - Lock	7	13	2					
3296-2	Nut - Lock	2	46	3					

OPTIONAL EQUIPMENT

Snow Cab Kit Part No. 88-0600

