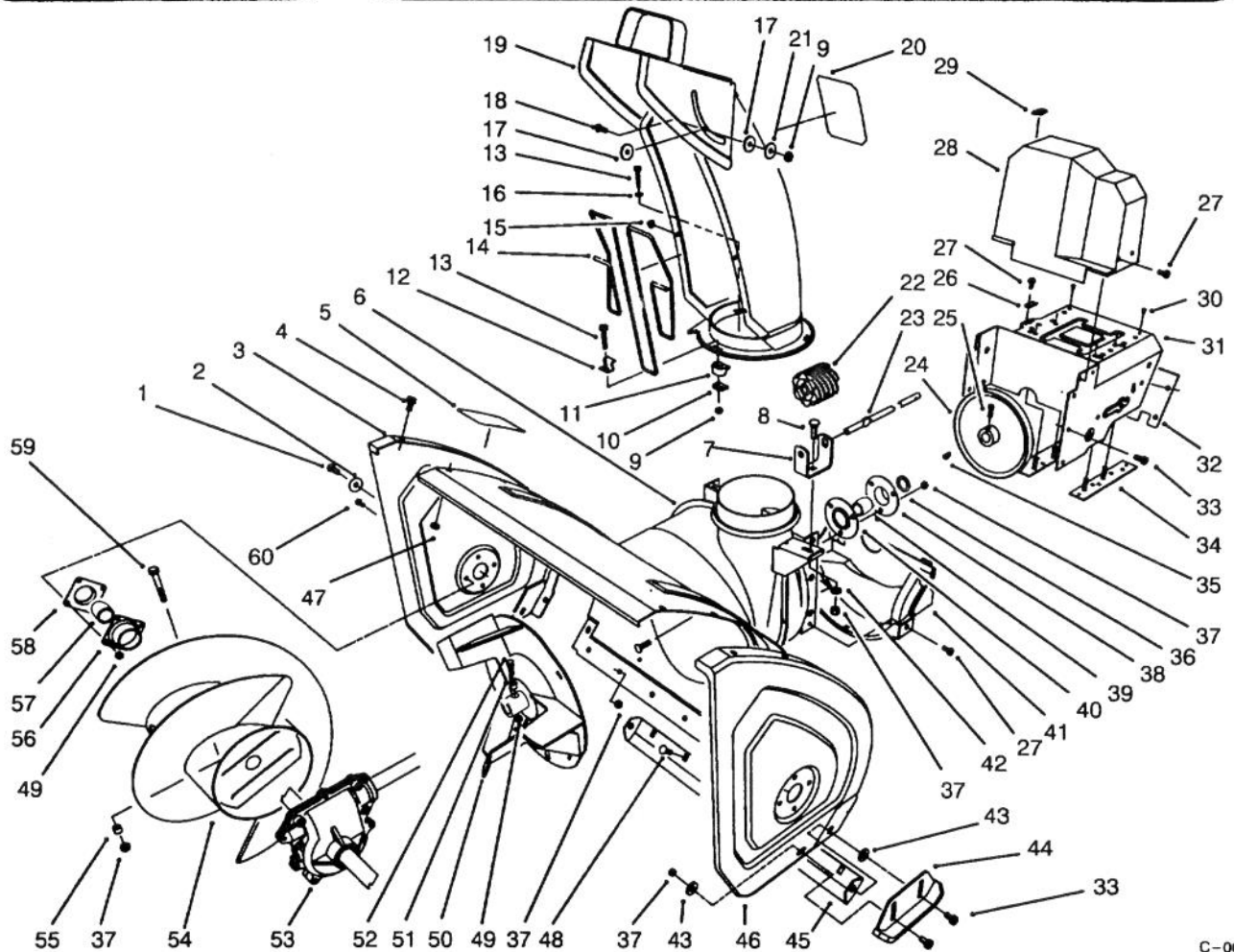




MODEL NO. 38580-4900001 & UP
MODEL NO. 38566-4900001 & UP

**PARTS
CATALOG**

1132 SNOWTHROWER

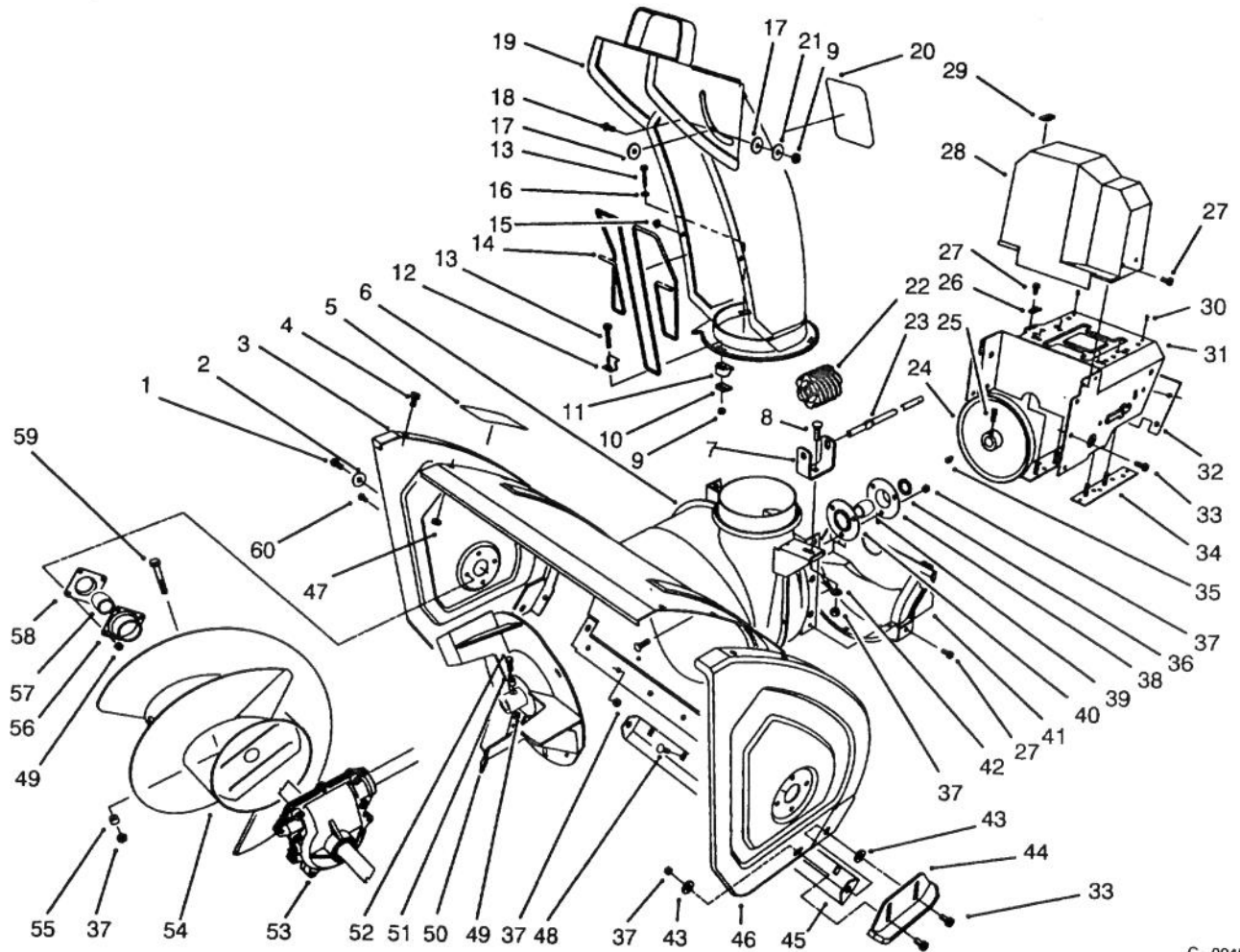


C-0045

HOUSING & CHUTE ASSEMBLY

Ref. No.	Part No.	Description	No. Used
1	323-6	Screw - Hex Hd.	2
2	3-0750	Washer - Retaining	2
3	66-7821	Plate - Side R.H.	1
4	3234-28	Screw - Hex Flange Hd.	12
5	53-7670	Decal - Danger Auger	1
6	62-0722	Housing - 32"	1
7	63-2180	Bracket - Gear	1
8	3230-2	Bolt - Carriage	1
9	3296-2	Nut - Lock	4
10	63-2670	Plate - Chute Retainer	3
11	62-1430	Retainer - Chute	3
12	63-3130	Clip - Chute Guard	1
13	3274-13	Screw - Machine	3
14	63-3020	Guard - Chute	1
15	3290-326	Nut - Push	2
16	3256-14	Washer - Flat	1

Ref. No.	Part No.	Description	No. Used
17	63-2900	Washer - Plastic	2
18	32122-32	Screw	1
19	62-0840	Chute Assembly	1
20	63-3740	Decal - Danger Chute (Model 38580 Only)	1
*	53-7660	Decal - Danger Chute (Model 38566 Only)	1
21	3256-61	Washer - Flat	1
22	62-0820	Gear - Worm	1
23	62-1720	Rod - Chute Gear	1
24	62-1300	Pulley - Impeller	1
25	3242-4	Screw - Set Sq. Hd.	2
26	63-2300	Retainer - Cable	1
27	32144-4	Screw - Hex Flange Hd.	6
28	63-2080	Cover - Belt (Upper)	1
29	63-3290	Cover - Cable	1

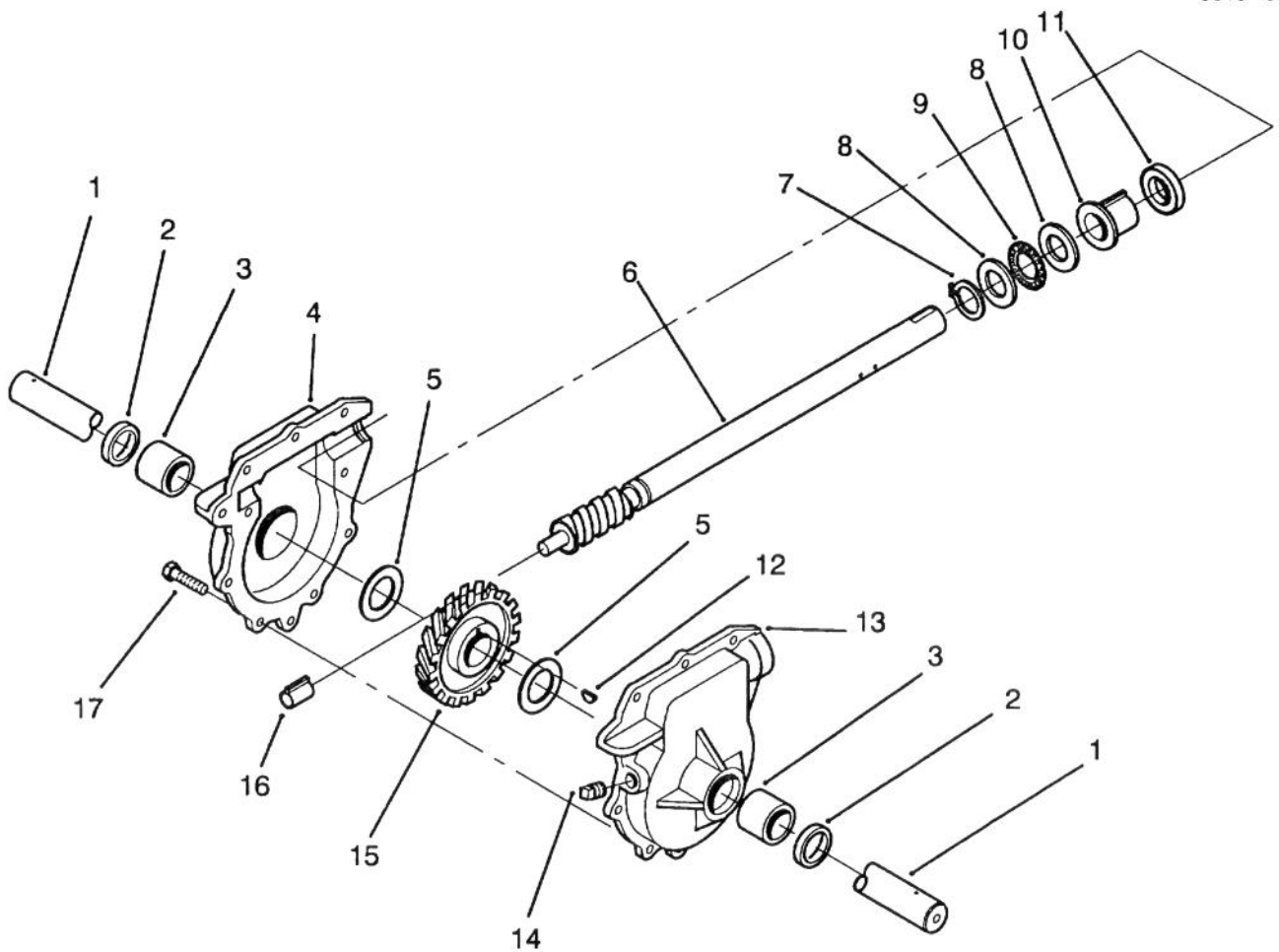


C-0045

HOUSING ASSEMBLY (Continued)

Ref. No.	Part No.	Description	No. Used	Ref. No.	Part No.	Description	No. Used
30	3269-23	Rivet	4	50	66-7920	Impeller	1
31	66-6980	Frame - Engine	1	51	66-8010	Spacer	2
32	62-1440	Cover - Engine Frame	1	52	321-44	Screw - Hex. Hd.	2
33	3234-5	Screw - Hex. Washer Hd.	10	53	74-1562	Auger Gearbox Assembly	1
34	68-4150	Plate - L.H.	1	54	63-2752	Auger - R.H. (Model 38580 Only)	1
*	68-4140	Plate - R.H.	1	*	63-2762	Auger - L.H. (Model 38580 Only)	1
35	3257-23	Key - Woodruff	1	*	68-7452	Auger - R.H. (Model 38566 Only)	1
36	252-80	Washer - Thrust	1	*	68-7462	Auger - L.H. (Model 38566 Only)	1
37	3296-29	Nut - Lock	16	55	25-5090	Spacer - Auger Hub	2
38		Flange - Bearing (Rear)	1	56	20-0990	Flange - Bearing (Inner)	2
39	63-3450	Bearing - Impeller	1	57	20-0980	Bearing - Auger	2
40		Flange - Bearing (Front)	1	58	20-1000	Flange - Bearing (Outer)	2
41	68-8410	Cover - Belt (Lower)	1	59	17-7030	Bolt - Auger	2
42	3256-23	Washer - Flat	1	60	321-3	Screw - Hex Hd.	8
43	52-2861	Washer	4	*	12-8789	Impeller Bearing Assembly (Incl. Ref. #38-40)	1
44	74-1440	Skid Assembly	2				
45	66-7760	Blade - Scraper	1				
46	66-7831	Plate - Side L.H.	1				
47	3296-47	Nut - Lock	12				
48	3230-23	Screw - Carriage	11				
49	3296-42	Nut - Lock	10				

*Not Illustrated

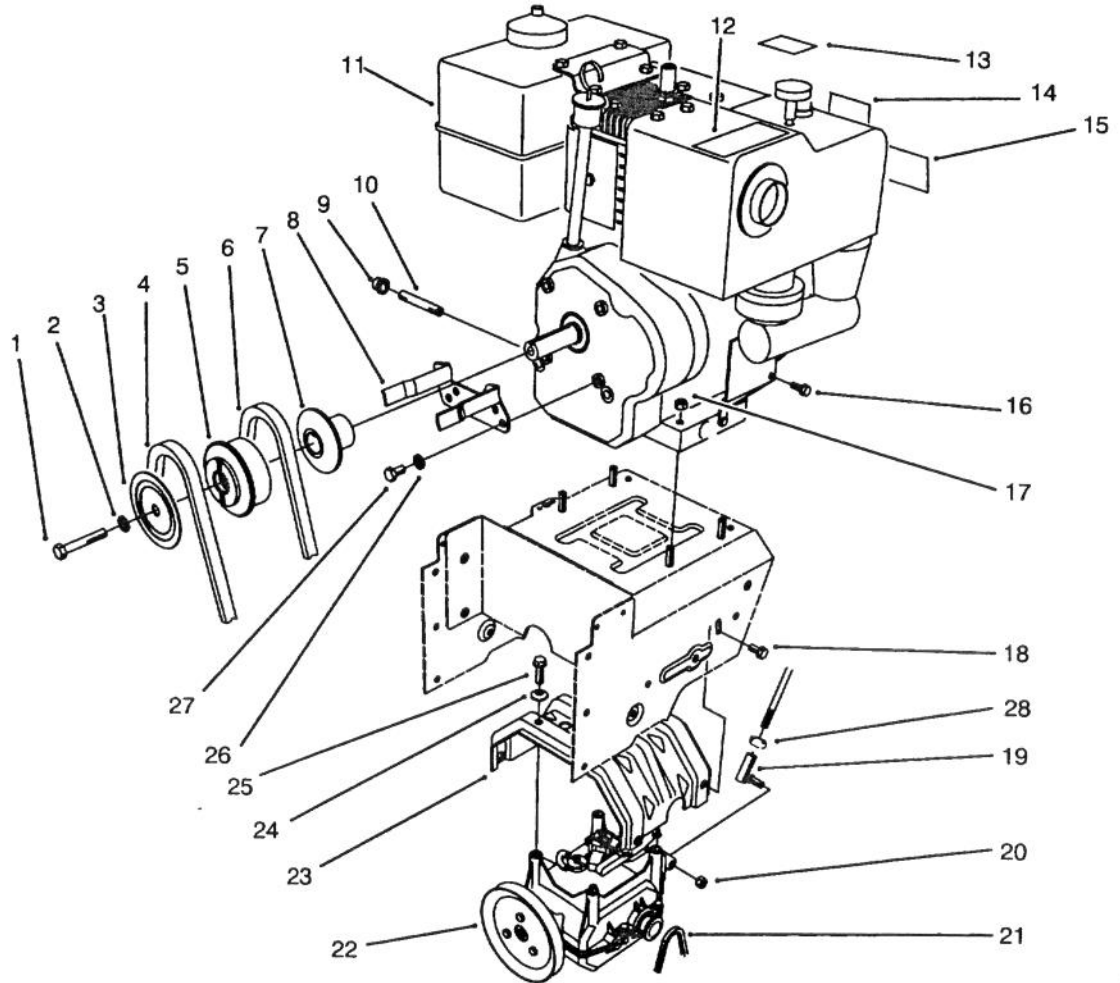


C-1015

32" AUGER GEARCASE ASSEMBLY NO. 74-1562

Ref. No.	Part No.	Description	No. Used	Ref. No.	Part No.	Description	No. Used
1	62-1532	Shaft - Auger (32")	1	10	37-6560	Bushing - Input	1
2	7-0045	Seal - Oil	2	11	253-149	Seal - Input	1
3	256-237	Bushing - Sleeve	2	12	3257-10	Key - Woodruff	1
4	74-1580	Gearcase Assembly - R.H. (Incl. Ref. # 2-3)	1	13	74-1570	Gearcase Assembly - L.H. (Incl. Ref. # 2-3)	1
5	252-71	Bearing - Thrust	2	14	281-1	Plug - Pipe Sq. Hd.	1
6	66-7811	Shaft - Impeller	1	15	62-0120	Gear - Helical	1
7	32151-33	Ring - Snap	1	16	62-1150	Bushing - Worm	1
8	252-78	Washer - Thrust	2	17	32144-110	Screw - Hex Washer Hd.	9
9	252-76	Bearing - Thrust	1	*	505-129	Sealant - 100g Tube	1

*Not Illustrated



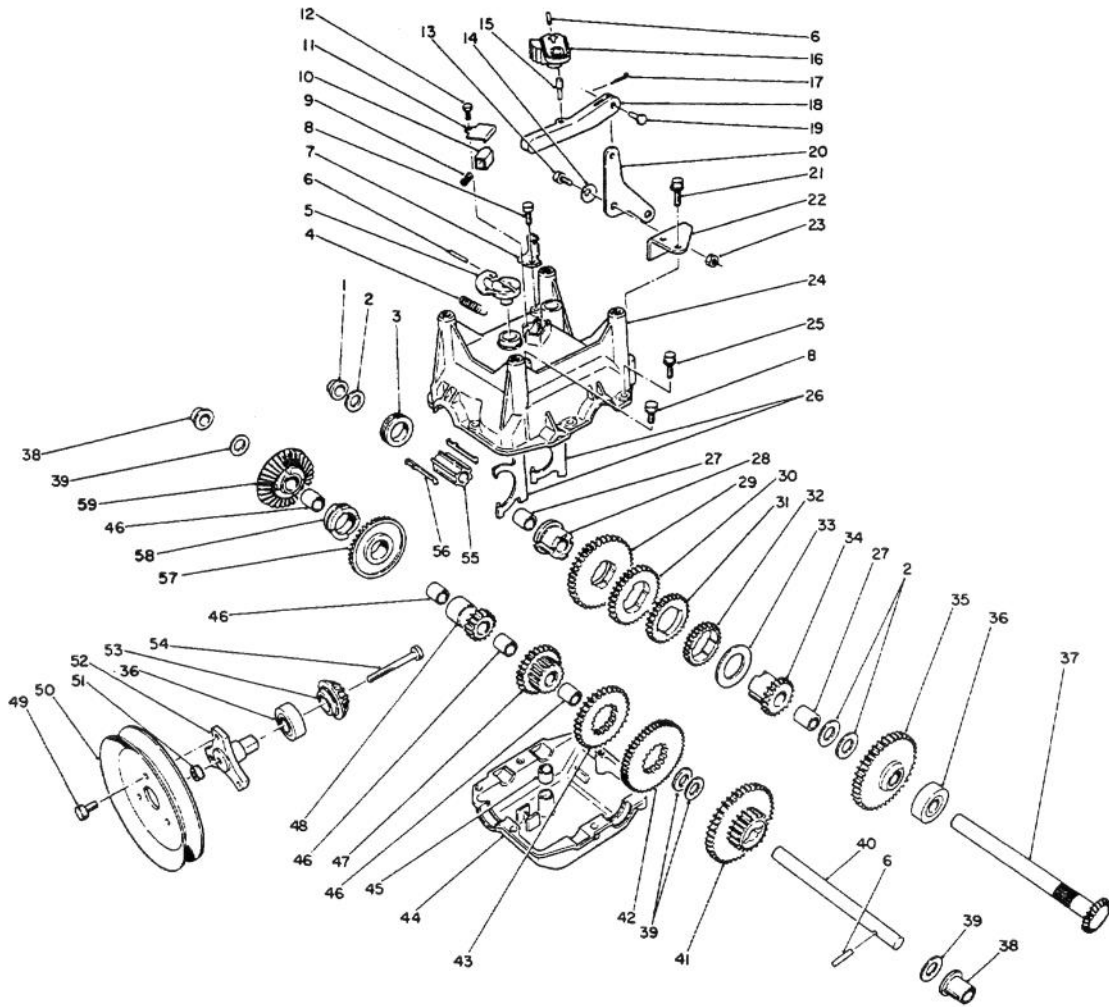
c-0051A

ENGINE ASSEMBLY

Ref. No.	Part No.	Description	No. Used	Ref. No.	Part No.	Description	No. Used
1	3212-8	Screw - Hex. Hd.	1	13	63-2340	Decal - Throttle	1
2	3253-6	Washer - Lock	1	14	63-2320	Decal - Primer	1
3	62-0940	Sheave Half - Impeller	1	15	63-2360	Decal - Choke (Model No. 38580)	1
4	63-2964	Belt - Impeller	1	*	63-2460	Decal - Choke (Model No. 38566)	1
5	62-0930	Hub - Sheave	1	16	2210-250	Screw - Hex. Washer Hd.	1
6	63-2953	Belt - Traction	1	17	32128-20	Nut - Lock	4
7	62-0920	Sheave Half - Traction	1	18	3234-7	Screw - Hex Flange Hd.	4
8	68-7510	Guide - Belt	1	19	63-2640	Joint - Ball	1
9	288-10	Cap - Pipe	1	20	3296-39	Nut - Lock	1
10	289-45	Pipe - Oil Drain	1	21	63-2930	Chain - Drive	1
†11		Engine - Briggs & Stratton (Model No. 252416 Type No. 0756-01)	1	22	66-8030	Transmission Assembly	1
†*		Engine - Briggs & Stratton (Model No. 252416 Type No. 0757-01)	1	23	63-2990	Frame - Transmission	1
12	66-6840	Decal - Hot Surface (Model No. 38580)	1	24	3290-461	Washer - Belleville	4
*	63-2310	Decal - Hot Surface (Model No. 38566)	1	25	11-0590	Screw - Hex Hd.	4
				26	3253-4	Washer - Lock	2
				27	3210-1	Screw - Hex Hd	2
				28	3220-3	Nut - Jam	1
				*	12-8949	Loose Parts	1

†Obtain from your local Briggs & Stratton Dealer.

*Not Illustrated

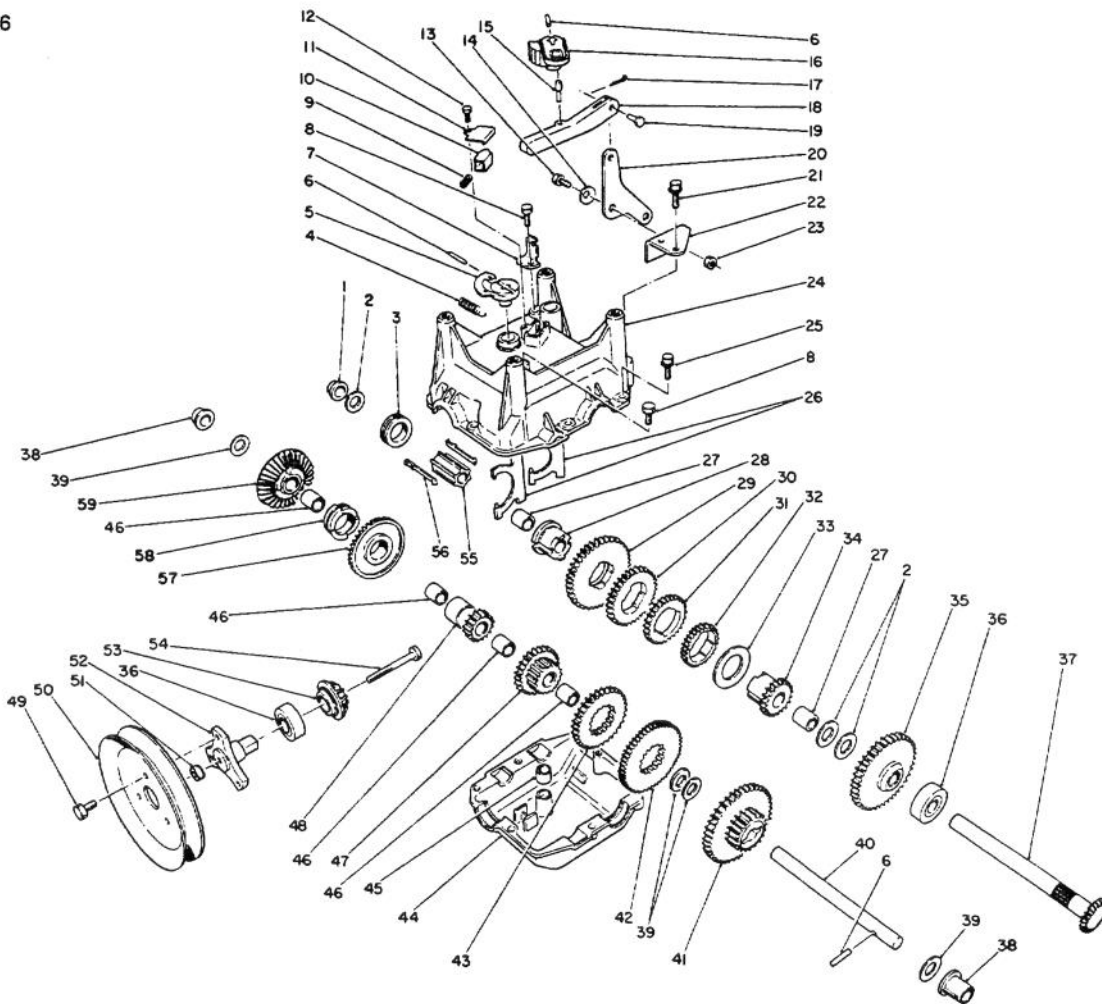


C-0052

TRANSMISSION ASSEMBLY NO. 66-8030

Ref. No.	Part No.	Description	No. Used
1	62-1180	Bushing - Output (Flange)	1
2	252-59	Washer - Thrust	3
3	62-0430	Collar - Shift (Speed)	1
4	63-2920	Spring - Extension (F/R Return)	1
5	62-0880	Lever - Direction Shift	1
6	32121-106	Pin - Coil	3
7	62-1740	Bracket - Cable	1
8	32144-4	Screw - Self Tapping	2
9	63-2890	Spring - Compression (Detent)	1
10	62-1020	Button - Detent	1
11	62-1690	Cover - Detent	1
12	32104-71	Screw - Pan Hd.	1
13	63-3410	Bolt - Shoulder	1
14	3290-477	Washer - Curved	1
15	63-2190	Pin - Gearshift Link	1
16	62-0870	Lever - Gear Shift	1
17	3272-1	Pin - Cotter	1
18	62-0860	Link - Gearshift	1
19	283-3	Pin - Clevis	1
20	63-2600	Bellcrank	1
21	32104-95	Screw - Hex Washer Hd.	2

Ref. No.	Part No.	Description	No. Used
22	62-1190	Bracket - Bellcrank	1
23	3296-42	Nut - Lock	1
24	62-0490	Gear Case - Upper	1
25	32144-86	Screw - Hex Washer Hd.	6
26	62-1040	Yoke - Shift	2
27	62-1350	Bushing - Output	2
28	62-0320	Sleeve	1
29	62-0240	Gear - 45T	1
30	62-0220	Gear - 34T	1
31	62-0200	Gear - 27T	1
32	62-0250	Gear - 29T	1
33	63-2280	Washer - Thrust	1
34	62-0340	Sleeve - Gear 19T	1
35	62-0370	Gear - 41T	1
36	38-7820	Bearing - Ball	2
37	62-1080	Shaft - Output	1
38	62-1170	Bushing - Flange	2
39	257-10	Washer - Thrust	4
40	62-0330	Shaft - Intermediate	1
41	62-0360	Gear - Compound 19T/41T	1
42	62-0260	Gear - 51T	1
43	62-0210	Gear - 33T	1
44	62-0480	Gear Case - Lower	1



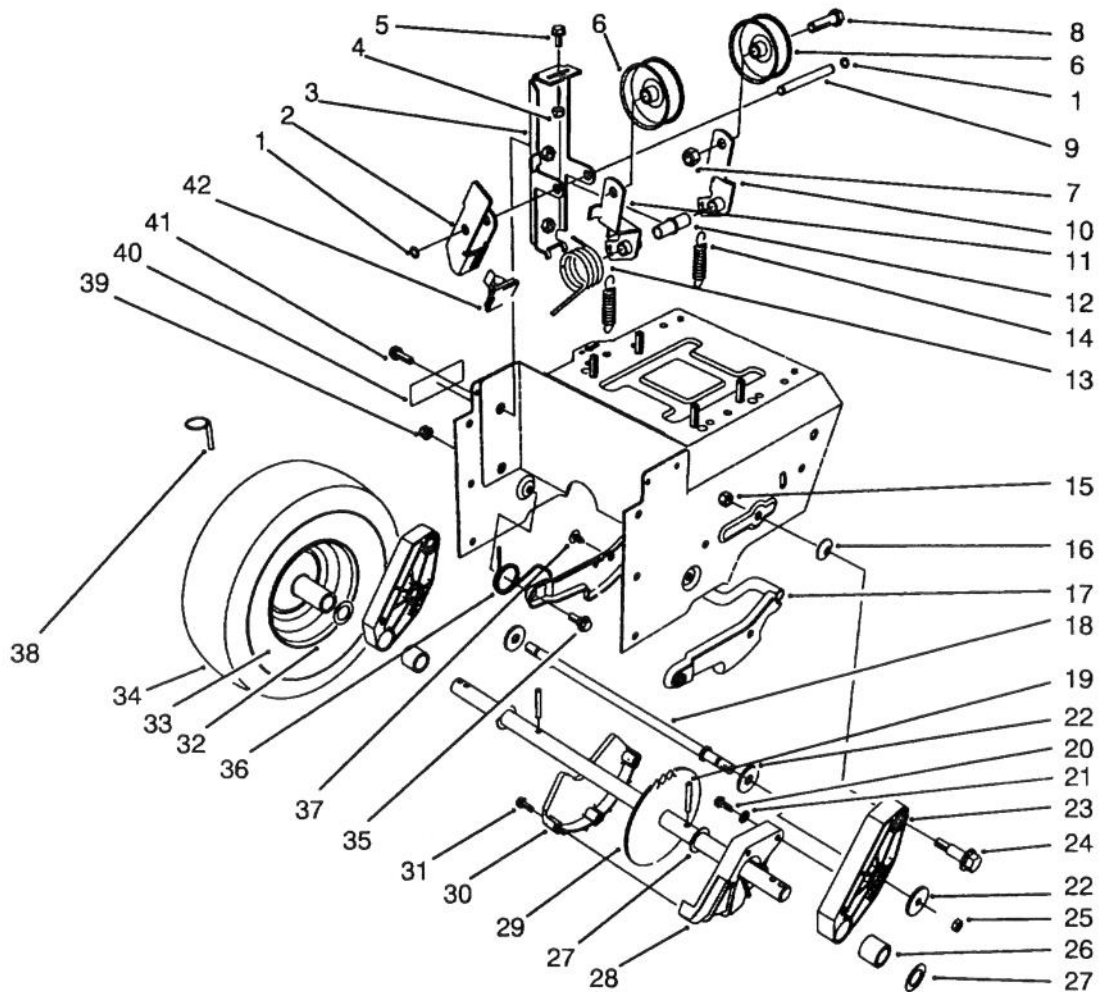
C-0052

TRANSMISSION ASSEMBLY NO. 66-8030 (Continued)

Ref. No.	Part No.	Description	No. Used
45	29-9570	Bushing - Yoke	1
46	62-1160	Bushing - Intermediate	4
47	68-4310	Gear - 26T	1
48	62-0500	Gear - 15T	1
49	12-3270	Screw	3
50	62-1310	Pulley - Traction	1
51	32128-32	Nut - Flange Lock	1
52	62-0380	Hub - Pulley	1
53	62-0350	Pinion - Bevel 19T	1

Ref. No.	Part No.	Description	No. Used
54	321-15	Screw - Cap Hex Hd.	1
55	68-4320	Sleeve - Shift	1
56	62-0310	Key - Shift	2
57	67-5870	Gear - Bevel 36T	1
58	67-5880	Collar - Shift	1
59	13-3559	Gear - Bevel Reverse 36T (Incl. Ref. #46)	1
*	505-101	Grease - 14.5 oz. Cartridge	1

*Not Illustrated

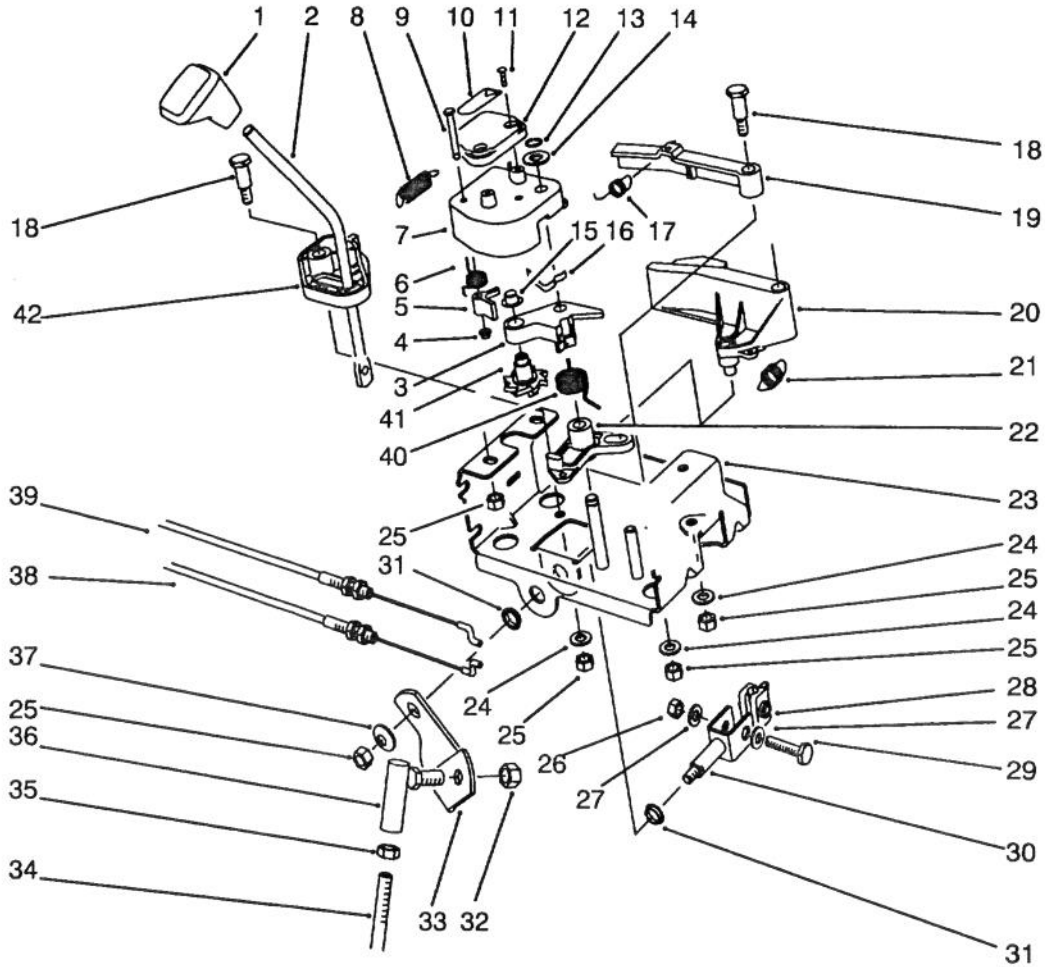


C-0053

TRACTION DRIVE ASSEMBLY

Ref. No.	Part No.	Description	No. Used	Ref. No.	Part No.	Description	No. Used
1	32120-46	Ring - Retaining	2			(Incl. Ref. # 26)	2
2	63-2820	Arm - Brake	1	24	62-1330	Bolt - Shoulder	2
3	63-2850	Bracket - Idler Arm	1	25	3296-23	Nut - Lock	2
4	3296-42	Nut - Lock	1	26	63-2250	Bushing - Axle	2
5	3234-13	Screw - Hex. Hd.	1	27	252-80	Washer - Thrust	4
6	3-4244	Pulley - Idler	2	28	62-1010	Guard - Chain L.H.	1
7	3296-59	Nut - Lock	2	29	63-2112	Axle Assembly	1
8	323-7	Screw - Hex Hd.	2	30	62-1000	Guard - Chain R.H.	1
9	62-0970	Pin - Idler	1	31	32104-121	Screw - Hex Flange Hd.	3
10	62-1260	Arm - Traction Idler	1	32	241-127	Rim - Wheel	2
11	62-1280	Arm - Impeller Idler	1	33	232-48	Tube - Inner	2
12	62-1210	Bushing - Idler	1	34	231-123	Tire	2
13	63-2881	Spring - Torsion	1	35	5-2490	Bolt - Shoulder	2
14	63-2870	Spring - Extension	2	36	63-2740	Spring - Torsion	1
15	3296-39	Nut - Lock	2	37	3290-476	Fastener - Panel	1
16	3290-461	Washer - Belleville	2	38	3290-243	Pin - Klik	2
17	62-0470	Latch - Arm	1	39	3296-47	Nut - Lock	2
18	66-7720	Rod - Latch	1	40	66-6860	Decal - Warning (Model No.38580)	1
19	32121-9	Pin - Roll	2	*	63-3470	Decal - Warning (Model No.38566)	1
20	32144-4	Screw - Hex Flange Hd.	2	41	3234-7	Screw - Hex Flange Hd.	2
21	3256-1	Washer - Flat	2	42	66-8060	Pad - Brake	1
22	63-3340	Washer	4				
23	66-7740	Pivot Arm Assembly					

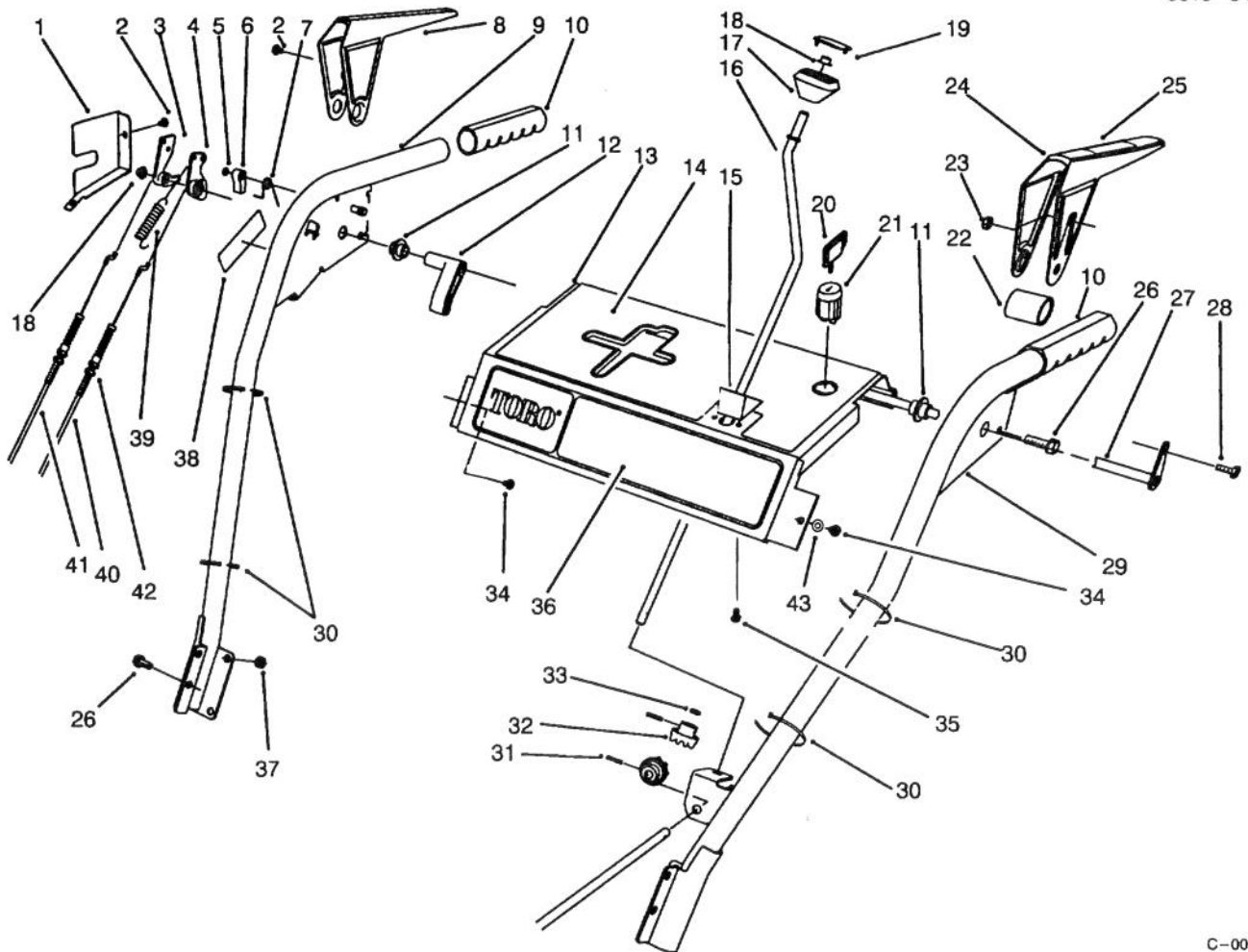
*Not Illustrated



C-0054

TRACTION LINKAGE ASSEMBLY

Ref. No.	Part No.	Description	No. Used	Ref. No.	Part No.	Description	No. Used
1	62-1290	Knob - Shift	1	22	62-1120	Lever - Reverse	1
2	67-9240	Rod - Shift (Upper)	1	23	63-2150	Frame - Control	1
3	62-1110	Lever - Index Wheel	1	24	3256-23	Washer - Flat	3
4	3290-422	Nut - Push	1	25	3296-29	Nut - Lock	7
5	62-0180	Tang - Index	1	26	3296-42	Nut - Lock	1
6	62-1650	Spring - Torsion	1	27	3256-1	Washer - Flat	2
7	62-1100	Lever - Latch	1	28	67-9250	Retainer - Shift Rod	1
8	63-2220	Spring - Extension	1	29	321-9	Screw - Cap Hex. Hd.	1
9	63-2610	Pin - Tang	1	30	66-7730	Clevis	1
10	63-2480	Decal - #2	1	31	256-296	Bushing - Nyliner	2
11	32104-118	Screw - Pan Hd.	2	32	3296-39	Nut - Lock	1
12	62-1140	Cover - Latch	1	33	63-2630	Bracket - Shift	1
13	32120-46	Ring - Retaining	1	34	63-2830	Rod - Shift (Lower)	1
14	257-9	Washer - Thrust	1	35	3220-3	Nut - Jam	1
15	3290-320	Nut - Push	1	36	63-2640	Joint - Ball	1
16	62-1710	Spring - Flat	1	37	3290-456	Washer - Belleville	1
17	63-2240	Spring - Extension	1	38	63-2210	Cable - Gearbox	1
18	63-2650	Screw - Shoulder	2	39	63-2200	Cable - Latch	1
19	62-1700	Lever - Lockout	1	40	63-2270	Spring - Torsion	1
20	62-1130	Lever - Reverse	1	41	62-0170	Wheel - Index	1
21	63-2230	Spring - Extension	1	42	62-1470	Base - Lockout	1

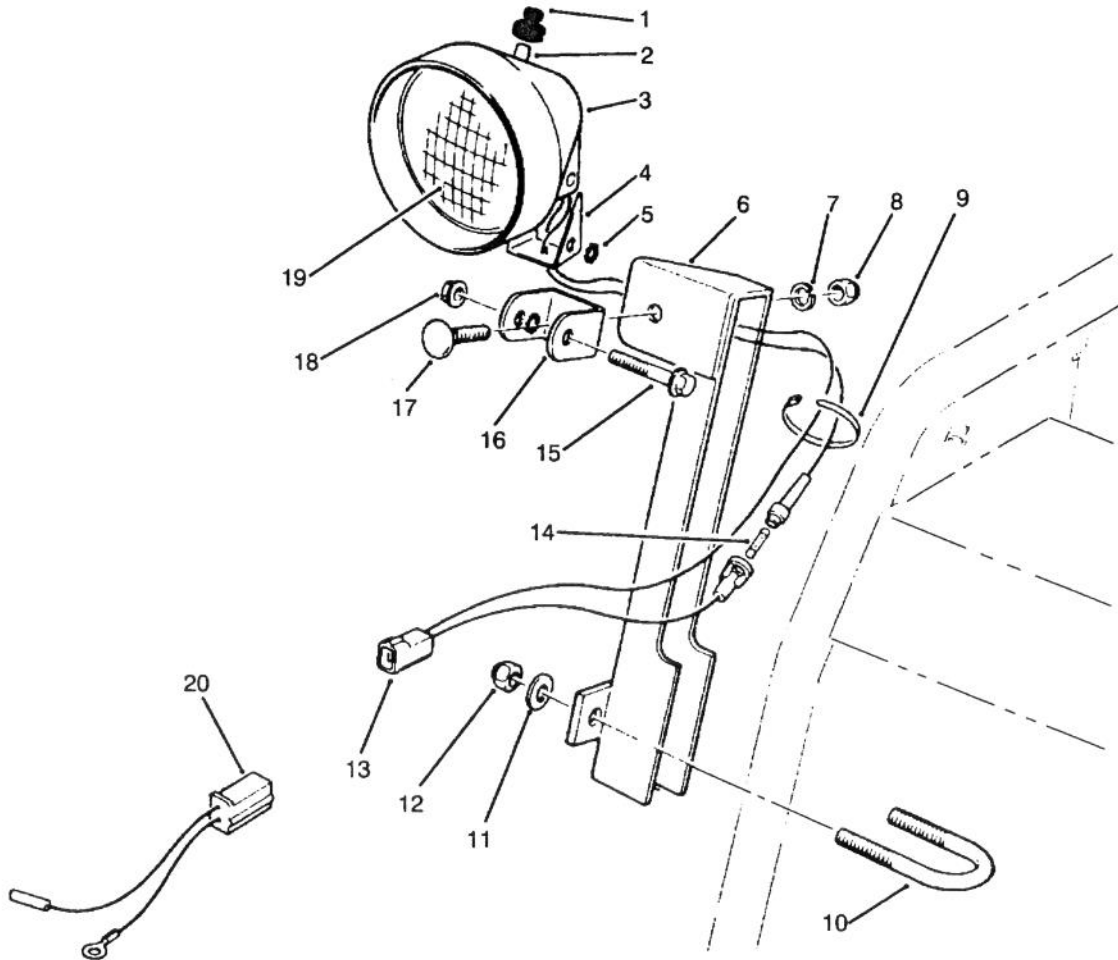


C-0055A

HANDLE ASSEMBLY

Ref. No.	Part No.	Description	No. Used	Ref. No.	Part No.	Description	No. Used
1	63-2170	Cover - Lever Lock	1	25	63-3050	Decal - Lever Model 38580 only	1
2	2210-250	Screw	4	26	3234-7	Screw - Hex Flange Hd.	6
3	62-0300	Tang - Locking	1	27	63-2030	Rod - Cross	1
4	62-0290	Cam - Release	1	28	3290-359	Screw	1
5	32151-66	Ring - Retaining	1	29	66-8091	Handle - L.H.	1
6	62-0280	Latch - Lock	1	30	3290-378	Tie - Cable	4
7	63-2910	Spring - Torsion	1	31	32121-50	Pin - Roll	2
8	62-1050	Lever - Impeller	1	32	62-1460	Gear - Universal	2
9	62-1381	Handle - R.H.	1	33	62-1230	Washer - Rubber	1
10	66-7850	Handlegrip	2	34	32104-76	Screw - Self Tapping	2
11	62-1070	Bushing - Lever	2	35	32104-118	Screw - Pan Hd.	2
12	62-1640	Lever - Trip	1	36	63-2530	Decal - Panel Front	1
13	66-8100	Panel - Control	1	37	3296-47	Nut - Lock	4
14	66-6850	Decal - Panel Top (Model 38580 Only)	1	38	66-6860	Decal - Warning (Model 38580 Only)	1
*	63-2550	Decal - Panel Top (Model 38566 Only)	1	*	63-3470	Decal - Warning (Model 38566 Only)	1
15	62-1490	Plate - Guide	1	39	88-0810	Spring - Extension	1
16	63-2160	Rod - Chute Crank	1	40	63-2710	Cable - Traction	1
17	62-1320	Knob - Chute Control	1	41	63-2700	Cable - Impeller	1
18	3290-320	Nut - Push	2	42	3296-42	Nut	4
19	62-1520	Cover - Knob	1	43	3256-14	Washer - Flat	2
20	63-8360	Key - Switch	1	*	54-9810	Assembly - Wire	1
21	40-5940	Switch - On/Off	1	*	66-6900	Assembly - Wire, Adapter (Model 38566 only)	1
22	63-3380	Spacer - Traction Lever	1	*	63-3420	Harness - Wire	1
23	3296-2	Nut - Lock	1				
24	62-1060	Lever - Traction	1				

*Not Illustrated

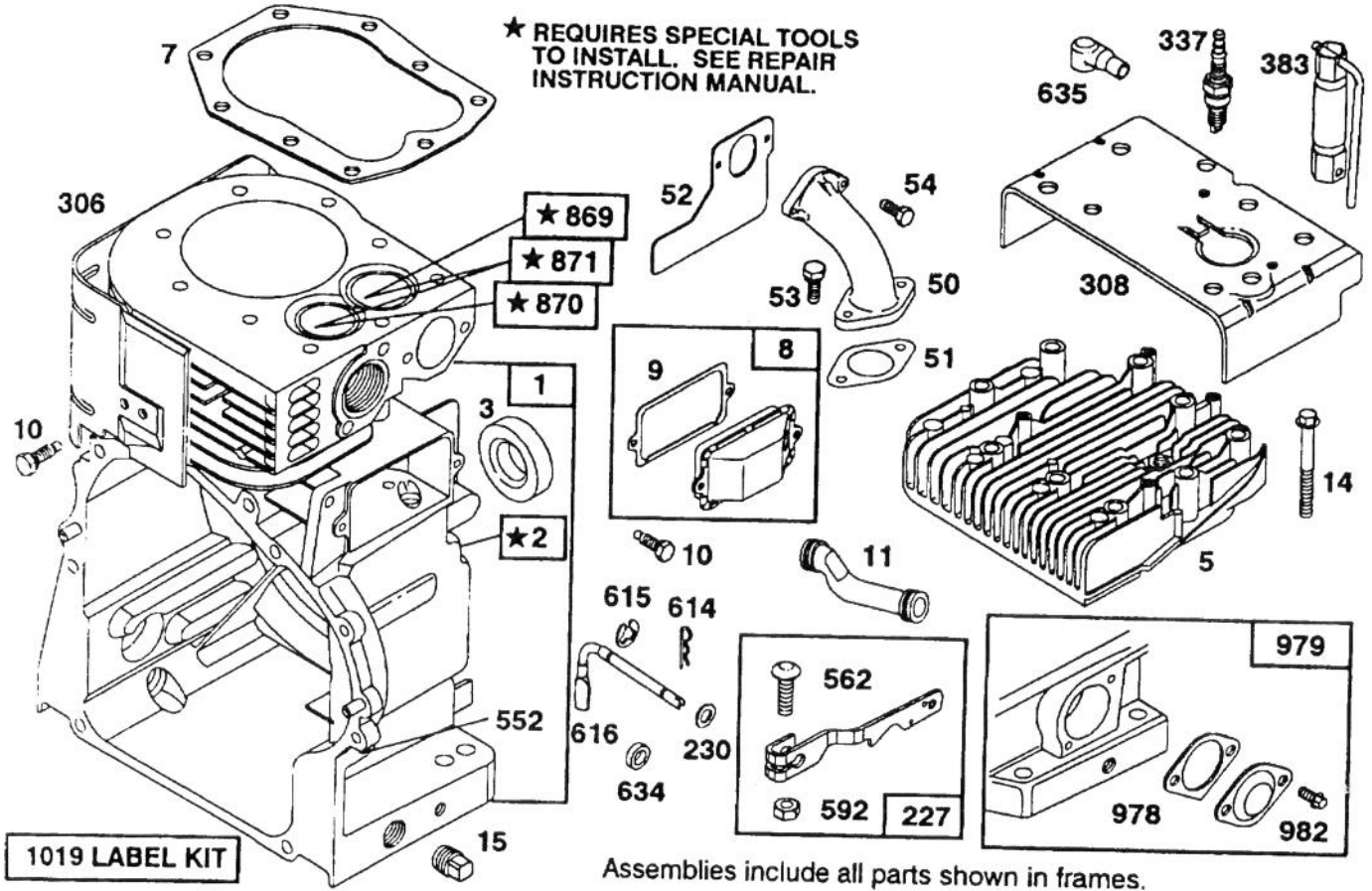


C-0071

LIGHT ASSEMBLY NO. 66-7940

Ref. No.	Part No.	Description	No. Used	Ref. No.	Part No.	Description	No. Used
1	218-473	Boot - Switch	1	13		Wire Assembly	1
2	218-553	Switch Assembly	1	†14		Fuse - 7-1/2 Amp.	1
3	218-552	Bucket - Headlamp	1	15	322-13	Screw - Hex. Flange Hd.	1
4	218-554	Bracket	1	16	218-556	Bracket - U	1
5	3255-8	Washer - Lock	2	17	3231-2	Bolt - Carriage	1
6	68-7110	Mount - Lamp	1	18	32128-35	Nut - Flange Lock	1
7	3253-21	Washer - Lock	1	19	218-15	Bulb - Sealed Beam	1
8	3217-7	Nut - Hex.	1	20	54-9810	Wire Assembly	1
9	3290-378	Tie Wrap	2	*	66-6900	Wire Assembly - Adaptor (Model No.38566 Only)	1
10	68-7140	Bolt - U	1	*	54-9870	Headlamp Assembly (Incl. Ref. #1-5, 7-8 & 13-19)	1
11	3256-23	Washer - Flat	2				
12	3296-29	Nut - Lock	2				

*Not Illustrated
†Obtain Locally



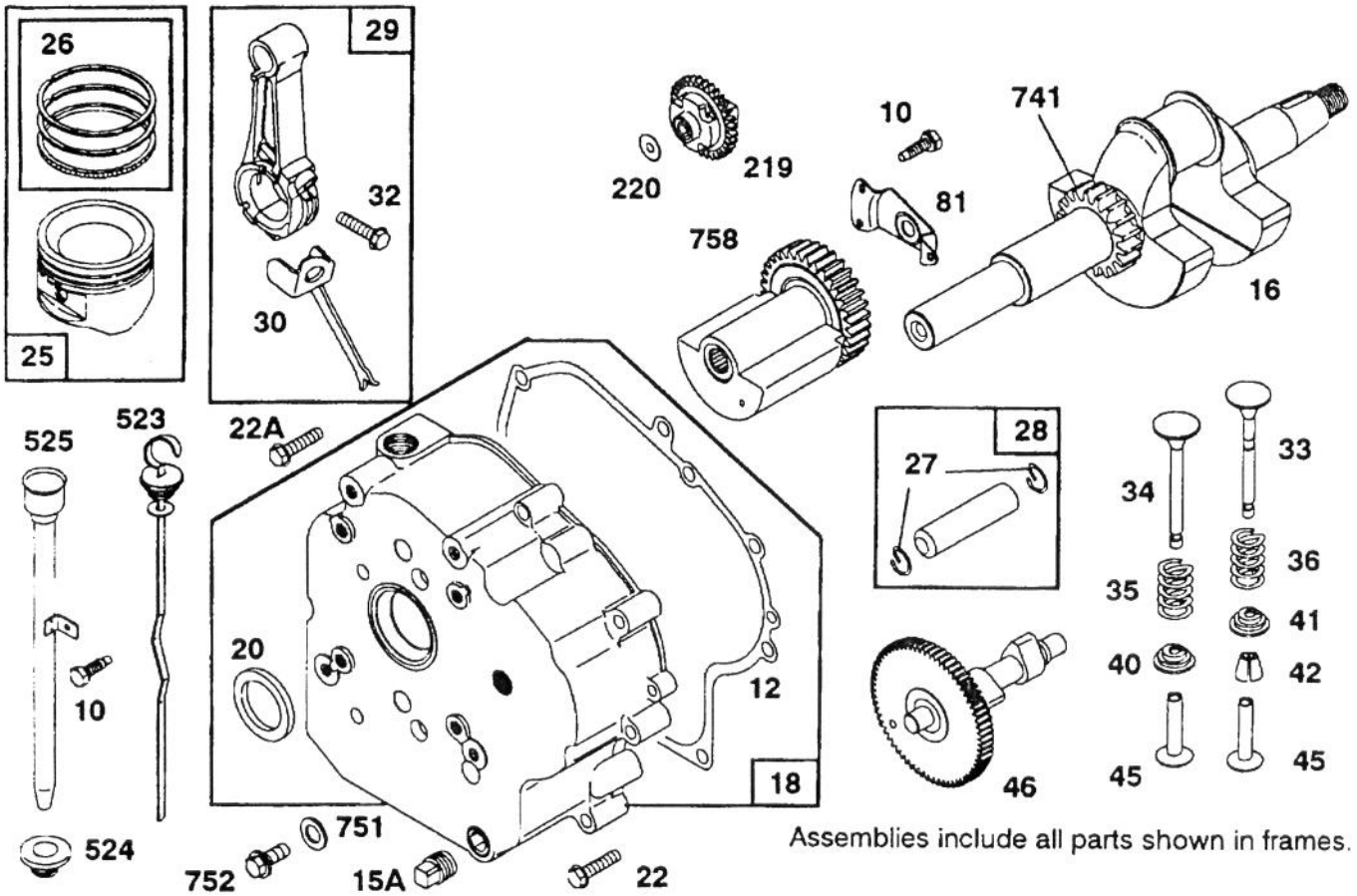
C-1728

ENGINE BRIGGS & STRATTON MODELS 252416-0756-01 & 252416-0757-01

Ref. No.	Part No.	Description	No. Used
1	396209	Cylinder Assembly	
2	399265	Bearing - Cylinder (DU)	
★3	391086	Seal - Oil	
5	212917	Head - Cylinder	
★7	271866	Gasket - Cylinder Hd.	
8	495736	Breather Assembly	
★9	27803	Gasket - Valve Cover	
10	94621	Screw - Breather	
11	280112	Tube - Breather	
14	93723	Screw - Cylinder Head (3" Long)	
15	94239	Plug - Pipe	
50	490051	Elbow - Intake	
★51	270267	Gasket - Carb. Mtg.	
★52	270872	Gasket - Intake Elbow Mtg.	
53	93415	Screw - Carburetor Mtg.	
54	93208	Screw - Intake Elbow Mtg.	
227	396775	Lever Assy. - Governor	
230	94742	Washer - Gov. Crank	

Ref. No.	Part No.	Description	No. Used
306	224542	Shield - Cylinder	
308	222306	Cover - Cylinder Head	
337	802592	Plug - Spark	
383	89838	Wrench - Spark Plug	
552	231598	Bushing - Gov. Crank	
562	92613	Bolt - Governor Lever	
592	231082	Nut - Hex.	
614	93306	Pin - Cotter	
615	93307	Retainer - E-Ring	
616	231057	Crank - Governor	
★634	491323	Seal - Oil	
635	66538	Elbow - Spark Plug	
869	261463	Seat - Intake Valve	
870	213316	Seat - Exhaust or Intake Valve	
★978	271736	Gasket - Oil Switch	
979	398194	Cover - Oil GARD® Hole	
982	94139	Cover Screw - Oil GARD®	
1019	491195	Label Kit	

■ Included in Carburetor Overhaul Kit - Part No. 394989.
 ★ Included in Gasket Set - part No. 391834.



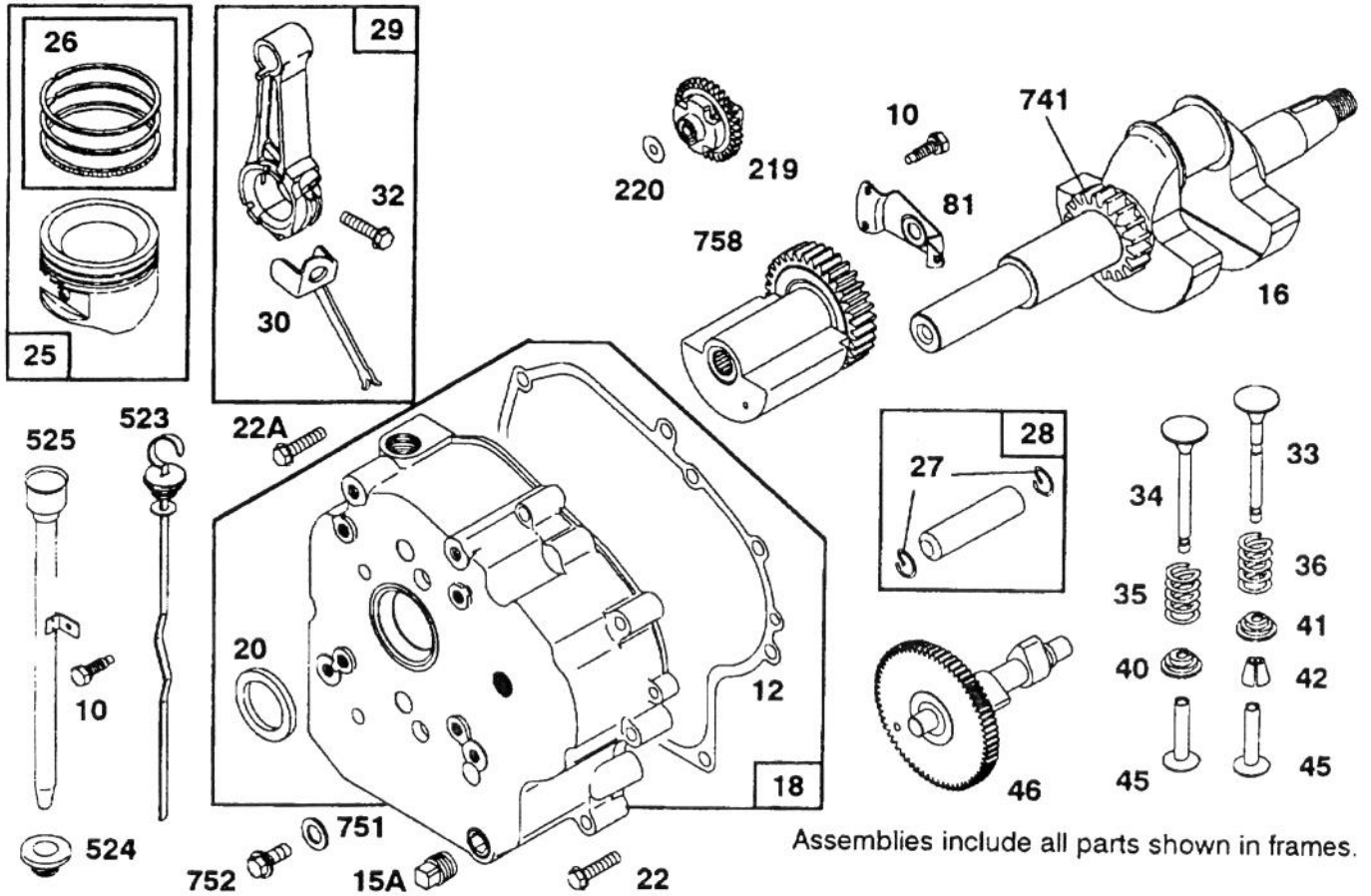
C-1729

ENGINE BRIGGS & STRATTON MODELS 252416-0756-01 & 252416-0757-01

Ref. No.	Part No.	Description	No. Used
10	94621	Screw - Breather	
*12	271704	Gasket - Crankcase Cover (1/64" Thick)	
*	272219	Gasket - Crankcase Cover (.005" Thick)	
*	272220	Gasket - Crankcase Cover (.009" Thick)	
15A	93418	Plug - Hex. Socket	
16	399723	Crankshaft	
		Note: Order Part No. 94196 For Timing Gear Key	
18	492661	Cover Assy. - Crankcase	
*20	291675	Seal - Oil	
22	93585	Screw - Crankcase Cover Mounting (5)	
		Note: 94676 Stud - Crankcase Cover Mounting	
22A	93764	Screw - Crankcase Cover Mounting (1) (2-1/8" Long)	
25	391285	Piston Assembly - (Std.)	
	391287	Piston Assy. (.010" O.S.)	

Ref. No.	Part No.	Description	No. Used
	391288	Piston Assy. (.020" O.S.)	
	391289	Piston Assy. (.030" O.S.)	
		Note: For Chrome Ring Set (Standard Size) Order No. 392331.	
26	391780	Ring Set - Piston (Standard)	
	391781	Ring Set - Piston (.010" O.S.)	
	391782	Ring Set - Piston (.020" O.S.)	
	391783	Ring Set - Piston (.030" O.S.)	
27	260924	Lock - Piston Pin	
28	299691	Pin Assy. - Piston (Standard)	
	391286	Pin Assy. Piston (.005" O.S.)	
29	490348	Rod Assembly - Connecting	
		Note: For Connecting Rod With .020" Undersize Crankcase Bore - Order No. 490469.	

* Included in Gasket Set - Part No. 391834.



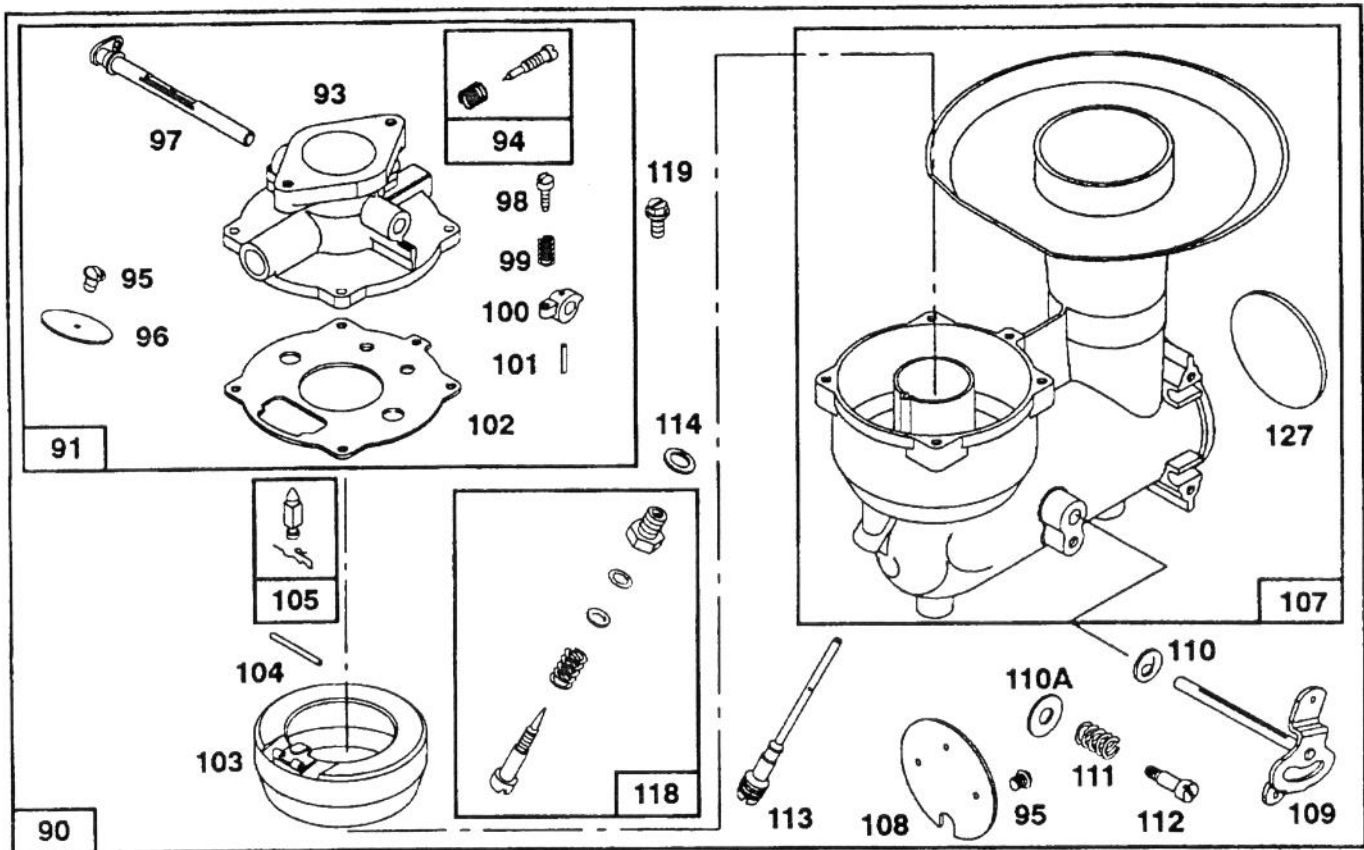
C-1729

ENGINE BRIGGS & STRATTON MODELS 252416-0756-01 & 252416-0757-01

Ref. No.	Part No.	Description	No. Used
30	222329	Dipper - Connecting Rod	
32	94671	Screw - Connecting Rod	
33	261185	Valve - Exhaust	
34	261462	Valve - Intake	
35	65906	Spring - Intake Valve	
36	26828	Spring - Exhaust Valve	
40	221596	Retainer - Intake Valve	
41	292260	Rotocoil - Exhaust Valve	
42	93630	Retainer - Exhaust Valve	
45	262248	Tappet - Valve	
46	212897	Gear - Cam	

Ref. No.	Part No.	Description	No. Used
219	494845	Gear - Governor	
220	221551	Washer - Thrust	
523	490665	Cap and Dipstick - Oil Filler	
★524	68838	Seal - Filler Tube	
525	392283	Tube - Oil Filler	
741	262135	Gear - Timing	
751	22355	Washer - Flat	
752	93554	Screw - Plug	
758	491787	Counterweight and Bearing Assembly	

★ Included in Gasket Set - Part No. 391834.



Assemblies include all parts shown in frames.

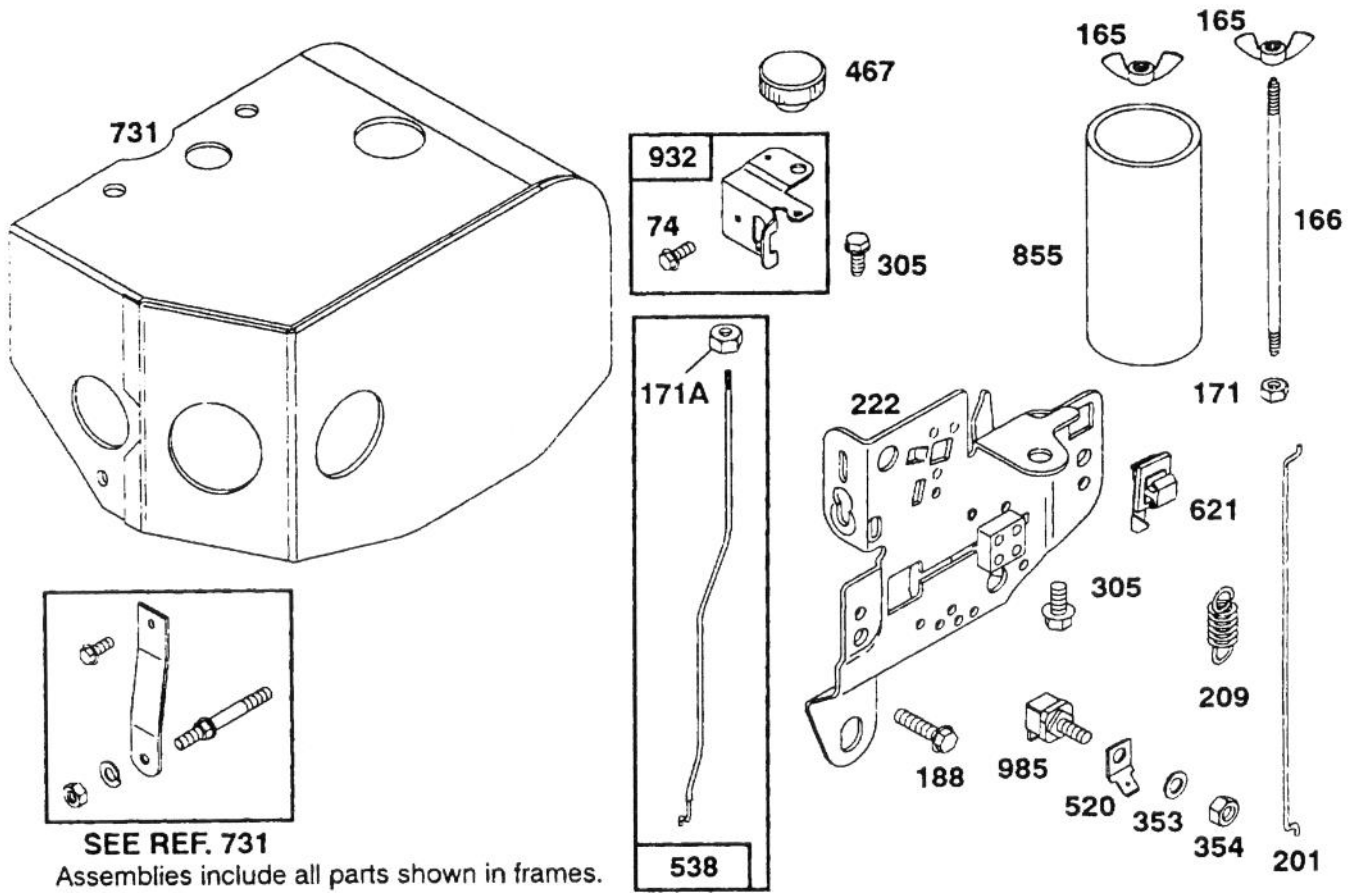
C-1730

ENGINE BRIGGS & STRATTON MODELS 252416-0756-01 & 252416-0757-01

Ref. No.	Part No.	Description	No. Used	Ref. No.	Part No.	Description	No. Used
90	399252	Carburetor Assembly		107	391829	Inlet (Includes Seat) Body Assembly - Lower Carburetor	
91	391833	Body Assembly - Upper Carburetor		108	223781	Valve - Choke	
93	23108	Bushing - Throttle Shaft		109	391884	Shaft and Lever - Choke	
94	292681	Valve Assembly - Carburetor Idle		110	62889	Washer - Choke Shaft	
95	93499	Screw - Throttle and Choke Valve Mounting		110A	222712	Washer - Choke Lever	
96	221939	Valve - Throttle		111	26155	Spring - Choke Lever	
97	391596	Shaft and Lever - Throttle		112	23123	Screw - Choke Lever	
98	91920	Screw - Machine Fil. Hd. (5/8" Long)		113	394730	Nozzle - Carburetor	
99	26157	Spring - Throttle Adjustment		114	68667	Gasket - Nozzle	
100	212904	Stop - Throttle		118	99525	Valve - Needle Includes: 22235 Washer - Brass 26336 Spring 65978 O-Ring 394033 Valve - Needle	
101	93043	Pin - Throttle Stop		119	94152	Screw - Sem	
102	270268	Gasket - Carburetor Body		127	221747	Plug - Welch	
103	298514	Float - Carburetor					
104	230896	Pin - Float Hinge					
105	394681	Valve - Fuel Inlet Note: 394682 Valve - Fuel					

■ Included in Carburetor Overhaul Kit - Part No. 394989.

★ Included in Gasket Set - part No. 391834.

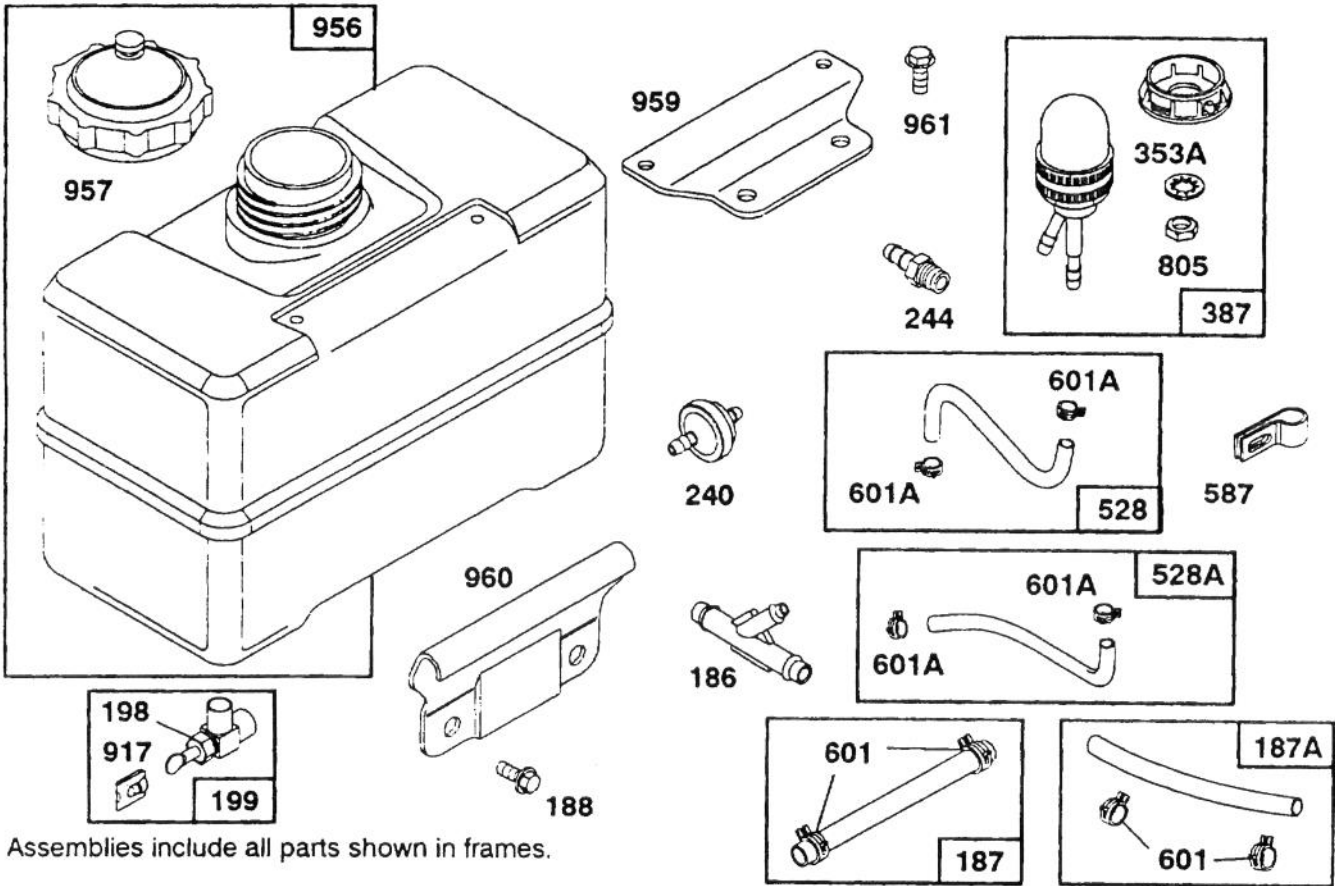


C-1731

ENGINE BRIGGS & STRATTON MODELS 252416-0756-01 & 252416-0757-01

Ref. No.	Part No.	Description	No. Used
74	93042	Screw - Sem	
165	94289	Nut - Wing	
166	231007	Stud - Air Cleaner	
171	92129	Nut - Hex. (1/4-28)	
171A	90356	Nut - Control Rod	
188	93535	Screw - Sem	
201	261236	Link - Governor	
209	260695	Spring - Governor	
222	399152	Plate - Gov. Control	
305	94608	Screw - Sem	
353	92791	Washer - Lock	
354	90576	Nut - Hex.	
467	391908	Knob - Choke Rod	
520	93722	Terminal - Spade	
538	396085	Rod - Control	

Ref. No.	Part No.	Description	No. Used
621	396847	Switch - Stop	
731	490173	Hood - Snow Uses: 223825 Strap - Support 93705 Screw (Hood to Strap) 93490 Screw (Hood to Blower Hsg.) 93640 Screw - Sem (Hood to Cyl. Head) 90832 Lockwasher	
855	231145	Stack - Carburetor Uses: 222726 Strap	
932	396084	Guide - Control Rod	
985	398525	Insulator Assembly	

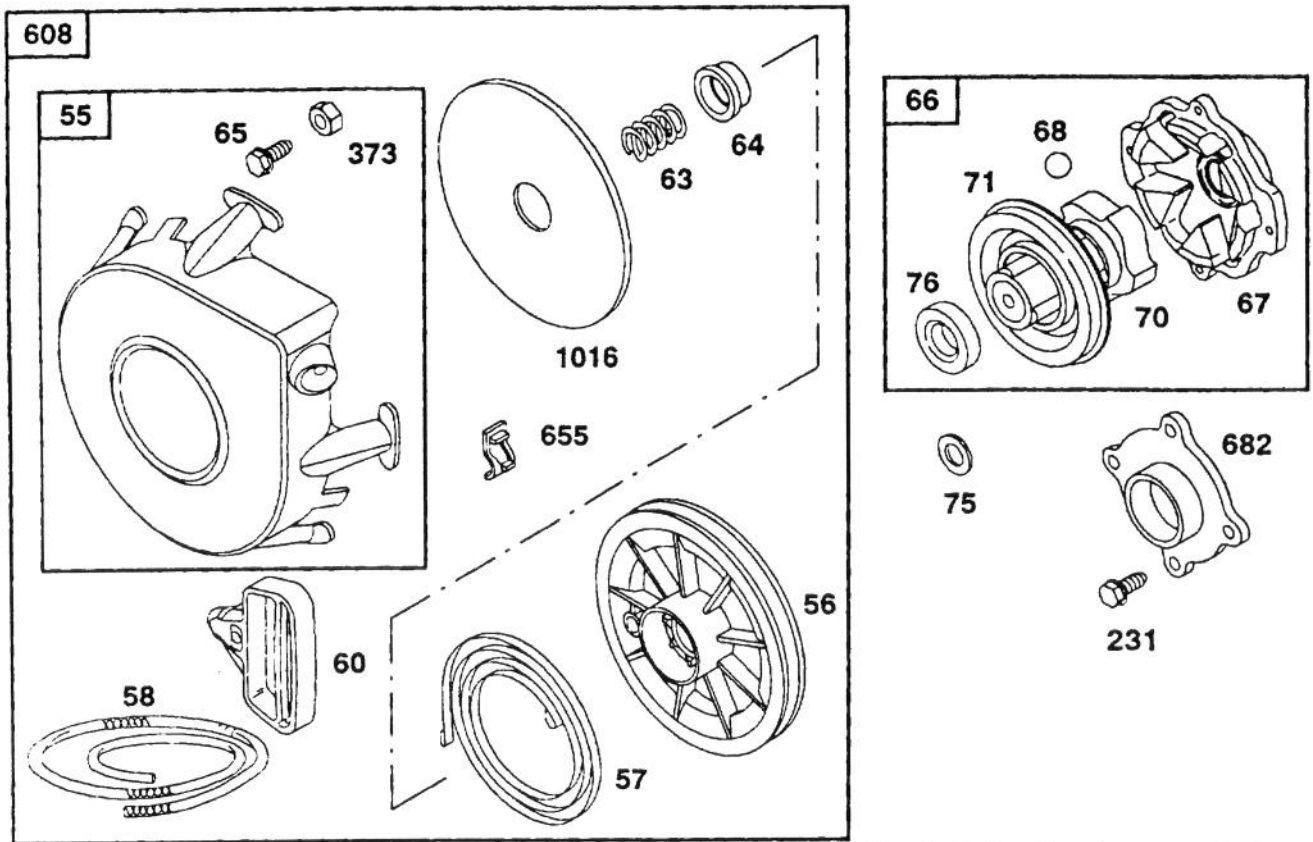


C-1732

ENGINE BRIGGS & STRATTON MODELS 252416-0756-01 & 252416-0757-01

Ref. No.	Part No.	Description	No. Used
186	280727	Hose Connector	
187	296004	Hose - Fuel (23")	
187A	393815	Hose - Fuel (11")	
188	93535	Screw - Sem	
198	293934	Valve - Fuel Shut Off	
199	399949	Outlet - Fuel Tank	
240	298090	Filter - Fuel	
244	230318	Connector - Fuel Pipe	
353A	94281	Washer - Lock	
387	399255	Primer Group	
528	399256	Hose - Primer (Includes Filter)	
528A	399254	Hose - Primer	

Ref. No.	Part No.	Description	No. Used
587	220162	Clamp - Primer Hose	
601	93053	Clamp - Fuel Hose (Green) Note: 93807 Clamp - Fuel Hose (Black)	
805	94189	Nut - Primer Retainer	
917	223271	Valve Handle - Fuel Shut Off	
956	493337	Tank Assembly - Fuel	
957	397975	Cap - Fuel Tank	
959	223754	Bracket - Fuel Tank (Upper)	
960	223755	Bracket - Fuel Tank (Lower)	
961	94095	Screw - Tank Mounting	

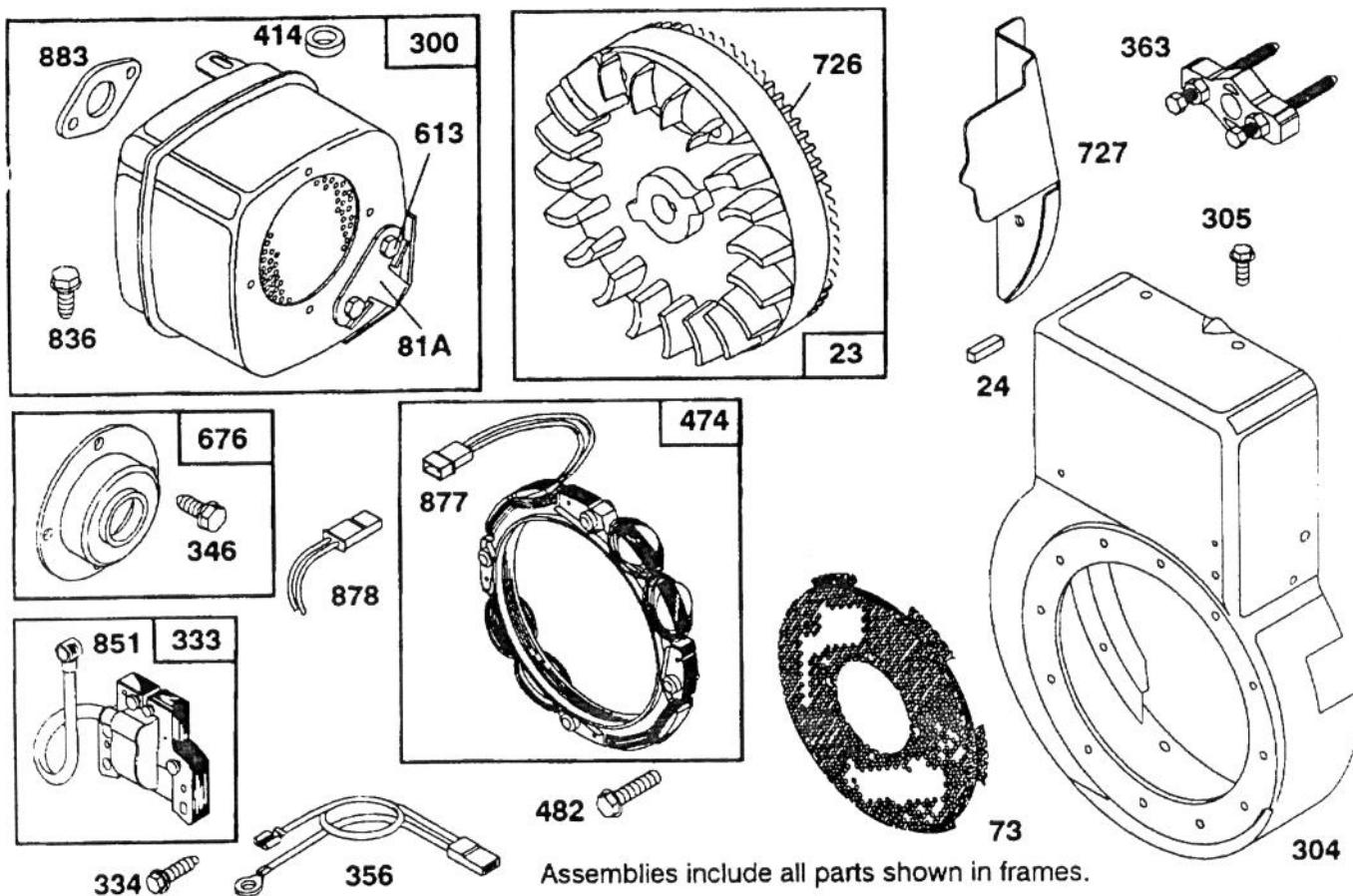


Assemblies include all parts shown in frames.

C-1733

ENGINE BRIGGS & STRATTON MODELS 252416-0756-01 & 252416-0757-01

Ref. No.	Part No.	Description	No. Used	Ref. No.	Part No.	Description	No. Used
55	398099	Housing - Rewind Starter		68	63770	Ball - Clutch	
56	295871	Pulley - Rewind Starter (Includes 63" Rope)		70	298799	Ratchet - Rewind Starter Clutch	
57	490179	Spring - Rewind Starter		71	394506	Washer - Retainer	
58	66884	Rope - Rewind Starter (63" Long)		75	224061	Washer - Spring	
60	398101	Grip - Starter Rope		76	68238	Washer - Ratchet Sealing	
63	260414	Spring - Ratchet		231	94238	Screw - Sem	
64	230543	Adapter - Ratchet Spring		373	92987	Nut - Hex.	
65	94128	Screw - Rewind Starter		608	397982	Starter Assy. - Rewind	
66	399671	Clutch Assy. - Rewind Starter		655	222598	Anchor - Spring	
67	394897	Housing - Clutch		682	211516	Shield - Starter Clutch	
				1016	490817	Spacer	



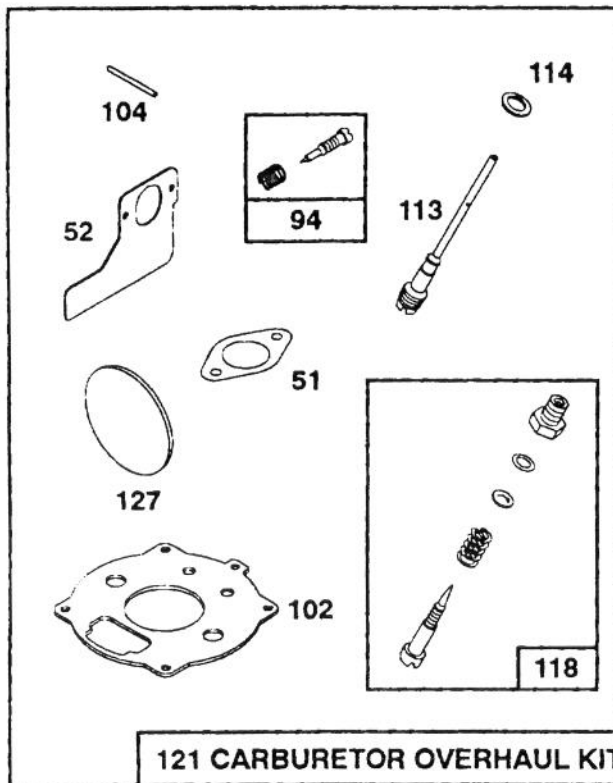
C-1734

ENGINE BRIGGS & STRATTON MODELS 252416-0756-01 & 252416-0757-01

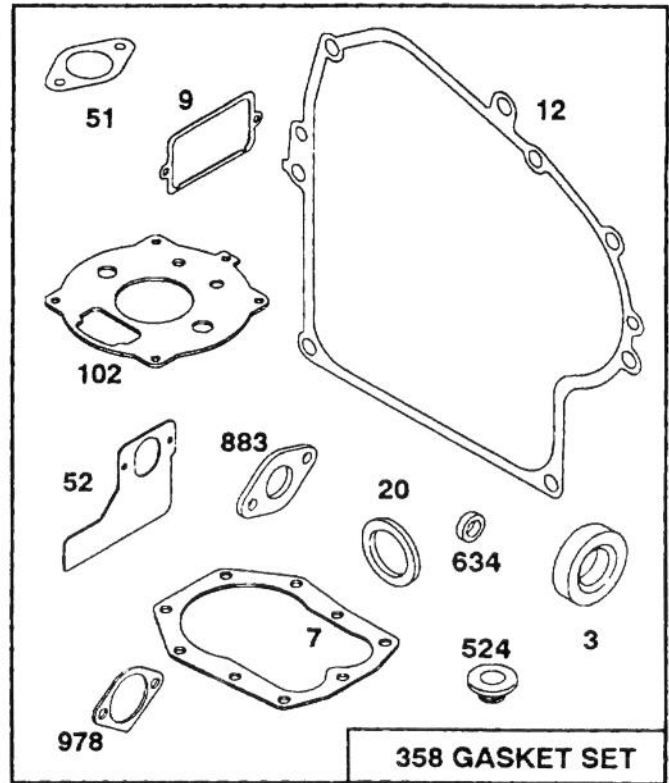
Ref. No.	Part No.	Description	No. Used	Ref. No.	Part No.	Description	No. Used
23	391988	Flywheel and Ring Gear Assy. - Magneto		613	93927	Screw - Hex. Hd.	
24	222698	Key - Flywheel		676	396903	Deflector - Exhaust	
81A	223016	Lock - Screw		726	392134	Gear - Flywheel Ring (Includes Mtg. Parts)	
300	491626	Muffler - Exhaust		727	223597	Guard - Ring Gear	
304	490446	Housing - Blower				221968 Guard - Upper Ring Gear	
305	94608	Screw - Sem				Use: 93712 Screw	
333	398811	Armature - Magneto				93713 Lockwasher	
334	94731	Screw - Armature Mounting				To Mount Guards	
346	93705	Screw - Sem		836	92747	Screw - Sem	
356	398874	Wire - Ground		851	221798	Terminal - Ignition Cable	
363	19203	Puller - Flywheel		877	393456	Diode and Connector Assy. Dual Circuit (Model 252416-0757-01)	
414	231109	Spacer - Muffler		878	393362	Alternator Harness Assy. Dual Circuit (Model 252416-0757-01)	
474	393474	Stator - Alternator Dual Circuit (Model 252416-0756-01)		*883	270917	Gasket - Exhaust	
★	391595	Stator - Alternator, D.C. (Model 252416-0756-01)					
482	93621	Screw - Sem					

★ Included in Gasket Set - Part No. 391834

★★ Not Illustrated



121 CARBURETOR OVERHAUL KIT



358 GASKET SET

Assemblies include all parts shown in frames.

C-1735

ENGINE BRIGGS & STRATTON MODELS 252416-0756-01 & 252416-0757-01

Ref. No.	Part No.	Description	No. Used
★3	391086	Seal - Oil	
7	271866	Gasket - Cylinder Hd.	
★9	27803	Gasket - Valve Cover	
★12	271704	Gasket - Crankcase Cover (1/64" Thick)	
★	272219	Gasket - Crankcase Cover (.005" Thick)	
★	272220	Gasket - Crankcase Cover (.009" Thick)	
★20	291675	Seal - Oil	
★★51	270267	Gasket - Carb. Mtg.	
★★52	270872	Gasket - Intake Elbow Mtg.	
★94	292681	Valve Assembly - Carburetor Idle	
★★102	270268	Gasket - Carburetor Body	
★104	230896	Pin - Float Hinge	

Ref. No.	Part No.	Description	No. Used
■113	394730	Nozzle - Carburetor	
■114	68667	Gasket - Nozzle	
■118	99525	Valve - Needle Includes: 22235 Washer - Brass 26336 Spring 65978 O-Ring 394033 Valve - Needle	
121	394989	Carburetor Overhaul Kit	
■127	221747	Plug - Welch	
358	391834	Gasket Set	
★524	68838	Seal - Filler Tube	
★634	491323	Seal - Oil	
★883	270917	Gasket - Exhaust	
★978	271736	Gasket - Oil Switch	

■ Included in Carburetor Overhaul Kit - Part No. 394989.

★ Included in Gasket Set - part No. 391834.

TORO PART NUMBER INDEX

3316-346

Part No.	Description	Pg. Ref. No. No. Qty.	Part No.	Description	Pg. Ref. No. No. Qty.
3-0750	Washer - Retaining	1 2 2	62-1070	Bushing - Lever	9 11 2
3-4244	Pulley - Idler	7 6 2	62-1080	Shaft - Output	5 37 1
5-2490	Bolt - Shoulder	7 35 2	62-1100	Lever - Latch	8 7 1
7-0045	Seal - Oil	3 2 2	62-1110	Lever - Index Wheel	8 3 1
11-0590	Screw - Hex Hd.	4 25 4	62-1120	Lever - Reverse	8 22 1
12-3270	Screw	6 49 3	62-1130	Lever - Reverse	8 20 1
12-8789	Impeller Bearing Assembly	2 * 1	62-1140	Cover - Latch	8 12 1
12-8949	Loose Parts	4 * 1	62-1150	Bushing - Worm	3 16 1
13-3559	Gear - Bevel Reverse 36T	6 59 1	62-1160	Bushing - Intermediate	6 46 4
17-7030	Bolt - Auger	2 59 2	62-1170	Bushing - Flange	5 38 2
20-0980	Bearing - Auger	2 57 2	62-1180	Bushing - Output (Flange)	5 1 1
20-0990	Flange - Bearing (Inner)	2 56 2	62-1190	Bracket - Bellcrank	5 22 1
20-1000	Flange - Bearing (Outer)	2 58 2	62-1210	Bushing - Idler	7 12 1
25-5090	Spacer - Auger Hub	2 55 2	62-1230	Washer - Rubber	9 33 1
29-9570	Bushing - Yoke	6 45 1	62-1260	Arm - Traction Idler	7 10 1
37-6560	Bushing - Input	3 10 1	62-1280	Arm - Impeller Idler	7 11 1
38-7820	Bearing - Ball	5 36 2	62-1290	Knob - Shift	8 1 1
40-5940	Switch - On/Off	9 21 1	62-1300	Pulley - Impeller	1 24 1
52-2861	Washer	2 43 4	62-1310	Pulley - Traction	6 50 1
53-7660	Decal - Danger Chute	1 * 1	62-1320	Knob - Chute Control	9 17 1
53-7670	Decal - Danger Auger	1 5 1	62-1330	Bolt - Shoulder	7 24 2
54-9810	Assembly - Wire	9 * 1	62-1350	Bushing - Output	5 27 2
54-9810	Wire Assembly	10 20 1	62-1381	Handle - R.H.	9 9 1
54-9870	Headlamp Assembly	10 * 1	62-1430	Retainer - Chute	1 11 3
62-0120	Gear - Helical	3 15 1	62-1440	Cover - Engine Frame	2 32 1
62-0170	Wheel - Index	8 41 1	62-1460	Gear - Universal	9 32 2
62-0180	Tang - Index	8 5 1	62-1470	Base - Lockout	8 42 1
62-0200	Gear - 27T	5 31 1	62-1490	Plate - Guide	9 15 1
62-0210	Gear - 33T	5 43 1	62-1520	Cover - Knob	9 19 1
62-0220	Gear - 34T	5 30 1	62-1532	Shaft - Auger (32")	3 1 1
62-0240	Gear - 45T	5 29 1	62-1640	Lever - Trip	9 12 1
62-0250	Gear - 29T	5 32 1	62-1650	Spring - Torsion	8 6 1
62-0260	Gear - 51T	5 42 1	62-1690	Cover - Detent	5 11 1
62-0280	Latch - Lock	9 6 1	62-1700	Lever - Lockout	8 19 1
62-0290	Cam - Release	9 4 1	62-1710	Spring - Flat	8 16 1
62-0300	Tang - Locking	9 3 1	62-1720	Rod - Chute Gear	1 23 1
62-0310	Key - Shift	6 56 2	62-1740	Bracket - Cable	5 7 1
62-0320	Sleeve	5 28 1	63-2030	Rod - Cross	9 27 1
62-0330	Shaft - Intermediate	5 40 1	63-2080	Cover - Belt (Upper)	1 28 1
62-0340	Sleeve - Gear 19T	5 34 1	63-2112	Axle Assembly	7 29 1
62-0350	Pinion - Bevel 19T	6 53 1	63-2150	Frame - Control	8 23 1
62-0360	Gear - Compound 19T/41T	5 41 1	63-2160	Rod - Chute Crank	9 16 1
62-0370	Gear - 41T	5 35 1	63-2170	Cover - Lever Lock	9 1 1
62-0380	Hub - Pulley	6 52 1	63-2180	Bracket - Gear	1 7 1
62-0430	Collar - Shift (Speed)	5 3 1	63-2190	Pin - Gearshift Link	5 15 1
62-0470	Latch - Arm	7 17 1	63-2200	Cable - Latch	8 39 1
62-0480	Gear Case - Lower	5 44 1	63-2210	Cable - Gearbox	8 38 1
62-0490	Gear Case - Upper	5 24 1	63-2220	Spring - Extension	8 8 1
62-0500	Gear - 15T	6 48 1	63-2230	Spring - Extension	8 21 1
62-0722	Housing - 32"	1 6 1	63-2240	Spring - Extension	8 17 1
62-0820	Gear - Worm	1 22 1	63-2250	Bushing - Axle	7 26 2
62-0840	Chute Assembly	1 19 1	63-2270	Spring - Torsion	8 40 1
62-0860	Link - Gearshift	5 18 1	63-2280	Washer - Thrust	5 33 1
62-0870	Lever - Gear Shift	5 16 1	63-2300	Retainer - Cable	1 26 1
62-0880	Lever - Direction Shift	5 5 1	63-2310	Decal - Hot Surface	4 * 1
62-0920	Sheave Half - Traction	4 7 1	63-2320	Decal - Primer	4 14 1
62-0930	Hub - Sheave	4 5 1	63-2340	Decal - Throttle	4 13 1
62-0940	Sheave Half - Impeller	4 3 1	63-2360	Decal - Choke	4 15 1
62-0970	Pin - Idler	7 9 1	63-2460	Decal - Choke	4 * 1
62-1000	Guard - Chain R.H.	7 30 1	63-2480	Decal - #2	8 10 1
62-1010	Guard - Chain L.H.	7 28 1	63-2530	Decal - Panel Front	9 36 1
62-1020	Button - Detent	5 10 1	63-2550	Decal - Panel Top	9 * 1
62-1040	Yoke - Shift	5 26 2	63-2600	Bellcrank	5 20 1
62-1050	Lever - Impeller	9 8 1	63-2610	Pin - Tang	8 9 1
62-1060	Lever - Traction	9 24 1	63-2630	Bracket - Shift	8 33 1

*Not Illustrated

TORO PART NUMBER INDEX (Cont.)

3316-346

Part No.	Description	Pg. Ref. No. No. Qty.	Part No.	Description	Pg. Ref. No. No. Qty.
63-2640	Joint - Ball	8 36 1	68-7140	Bolt - U	10 10 1
63-2640	Joint- Ball	4 19 1	68-7452	Auger - R.H.	2 * 1
63-2650	Screw - Shoulder	8 18 2	68-7462	Auger - L.H.	2 * 1
63-2670	Plate - Chute Retainer	1 10 3	68-7510	Guide - Belt	4 8 1
63-2700	Cable - Impeller	9 41 1	68-8410	Cover - Belt (Lower)	2 41 1
63-2710	Cable - Traction	9 40 1	74-1440	Skid Assembly	2 44 2
63-2740	Spring - Torsion	7 36 1	74-1562	Auger Gearbox Assembly	2 53 1
63-2752	Auger - R.H.	2 54 1	74-1570	Gearcase Assembly - L.H.	3 13 1
63-2762	Auger - L.H.	2 * 1	74-1580	Gearcase Assembly - R.H.	3 4 1
63-2820	Arm - Brake	7 2 1	88-0810	Spring - Extension	9 39 1
63-2830	Rod - Shift (Lower)	8 34 1	218-15	Bulb - Sealed Beam	10 19 1
63-2850	Bracket - Idler Arm	7 3 1	218-473	Boot - Switch	10 1 1
63-2870	Spring - Extension	7 14 2	218-552	Bucket - Headlamp	10 3 1
63-2881	Spring - Torsion	7 13 1	218-553	Switch Assembly	10 2 1
63-2890	Spring - Compression	5 9 1	218-554	Bracket	10 4 1
63-2900	Washer - Plastic	1 17 2	218-556	Bracket - U	10 16 1
63-2910	Spring - Torsion	9 7 1	2210-250	Screw	9 2 4
63-2920	Spring - Extension	5 4 1	2210-250	Screw - Hex. Washer Hd.	4 16 1
63-2930	Chain - Drive	4 21 1	231-123	Tire	7 34 2
63-2953	Belt - Traction	4 6 1	232-48	Tube - Inner	7 33 2
63-2964	Belt - Impeller	4 4 1	241-127	Rim - Wheel	7 32 2
63-2990	Frame - Transmission	4 23 1	252-59	Washer - Thrust	5 2 3
63-3020	Guard - Chute	1 14 1	252-71	Bearing - Thrust	3 5 2
63-3050	Decal - Lever	9 25 1	252-76	Bearing - Thrust	3 9 1
63-3130	Clip - Chute Guard	1 12 1	252-78	Washer - Thrust	3 8 2
63-3290	Cover - Cable	1 29 1	252-80	Washer - Thrust	7 27 4
63-3340	Washer	7 22 4	252-80	Washer - Thrust	2 36 1
63-3380	Spacer - Traction Lever	9 22 1	253-149	Seal - Input	3 11 1
63-3410	Bolt - Shoulder	5 13 1	256-237	Bushing - Sleeve	3 3 2
63-3420	Harness - Wire	9 * 1	256-296	Bushing - Nyliner	8 31 2
63-3450	Bearing - Impeller	2 39 1	257-9	Washer - Thrust	8 14 1
63-3470	Decal - Warning	7 * 1	257-10	Washer - Thrust	5 39 4
63-3470	Decal - Warning	9 * 1	281-1	Plug - Pipe Sq. Hd.	3 14 1
63-3740	Decal - Danger Chute	1 20 1	283-3	Pin - Clevis	5 19 1
63-8360	Key - Switch	9 20 1	288-10	Cap - Pipe	4 9 1
66-6840	Decal - Hot Surface	4 12 1	289-45	Pipe - Oil Drain	4 10 1
66-6850	Decal - Panel Top	9 14 1	321-3	Screw - Hex Hd.	2 60 8
66-6860	Decal - Warning	9 38 1	321-9	Screw - Cap Hex. Hd.	8 29 1
66-6860	Decal - Warning	7 40 1	321-15	Screw - Cap Hex Hd.	6 54 1
66-6900	Assembly - Wire, Adapter	9 * 1	321-44	Screw - Hex. Hd.	2 52 2
66-6900	Wire Assembly - Adaptor	10 * 1	322-13	Screw - Hex. Flange Hd.	10 15 1
66-6980	Frame - Engine	2 31 1	323-6	Screw - Hex Hd.	1 1 2
66-7720	Rod - Latch	7 18 1	323-7	Screw - Hex Hd.	7 8 2
66-7730	Clevis	8 30 1	3210-1	Screw - Hex Hd.	4 27 2
66-7740	Pivot Arm Assembly	7 23 2	3212-8	Screw - Hex. Hd.	4 1 1
66-7760	Blade - Scraper	2 45 1	3217-7	Nut - Hex.	10 8 1
66-7811	Shaft - Impeller	3 6 1	3220-3	Nut - Jam	4 28 1
66-7821	Plate - Side R.H.	1 3 1	3220-3	Nut - Jam	8 35 1
66-7831	Plate - Side L.H.	2 46 1	3230-2	Bolt - Carriage	1 8 1
66-7850	Handlegrip	9 10 2	3230-23	Screw - Carriage	2 48 11
66-7920	Impeller	2 50 1	3231-2	Bolt - Carriage	10 17 1
66-8010	Spacer	2 51 2	3234-5	Screw - Hex. Washer Hd.	2 33 10
66-8030	Transmission Assembly	4 22 1	3234-7	Screw - Hex Flange Hd.	4 18 4
66-8060	Pad - Brake	7 42 1	3234-7	Screw - Hex Flange Hd.	9 26 6
66-8091	Handle - L.H.	9 29 1	3234-7	Screw - Hex Flange Hd.	7 41 2
66-8100	Panel - Control	9 13 1	3234-13	Screw - Hex. Hd.	7 5 1
67-5870	Gear - Bevel 36T	6 57 1	3234-28	Screw - Hex Flange Hd.	1 4 12
67-5880	Collar - Shift	6 58 1	3242-4	Screw - Set Sq. Hd.	1 25 2
67-9240	Rod - Shift (Upper)	8 2 1	3253-4	Washer - Lock	4 26 2
67-9250	Retainer - Shift Rod	8 28 1	3253-6	Washer - Lock	4 2 1
68-4140	Plate - R.H.	2 * 1	3253-21	Washer - Lock	10 7 1
68-4150	Plate - L.H.	2 34 1	3255-8	Washer - Lock	10 5 2
68-4310	Gear - 26T	6 47 1	3256-1	Washer - Flat	7 21 2
68-4320	Sleeve - Shift	6 55 1	3256-1	Washer - Flat	8 27 2
68-7110	Mount - Lamp	10 6 1	3256-14	Washer - Flat	1 16 1

*Not Illustrated

TORO PART NUMBER INDEX (Cont.)

Part No.	Description	Pg. Ref. No. No. Qty.	Part No.	Description	Pg. Ref. No. No. Qty.
3256-14	Washer - Flat	9 43 2	3296-42	Nut - Lock	7 4 1
3256-23	Washer - Flat	10 11 2	3296-42	Nut - Lock	5 23 1
3256-23	Washer - Flat	8 24 3	3296-42	Nut - Lock	8 26 1
3256-23	Washer - Flat	2 42 1	3296-42	Nut - Lock	2 49 10
3256-61	Washer - Flat	1 21 1	3296-47	Nut - Lock	9 37 4
3257-10	Key - Woodruff	3 12 1	3296-47	Nut - Lock	7 39 2
3257-23	Key - Woodruff	2 35 1	3296-47	Nut - Lock	2 47 12
3269-23	Rivet	2 30 4	3296-59	Nut - Lock	7 7 2
3272-1	Pin - Cotter	5 17 1	32104-71	Screw - Pan Hd.	5 12 1
3274-13	Screw - Machine	1 13 3	32104-76	Screw - Self Tapping	9 34 2
3290-243	Pin - Klik	7 38 2	32104-95	Screw - Hex Washer Hd.	5 21 2
3290-320	Nut - Push	8 15 1	32104-118	Screw - Pan Hd.	8 11 2
3290-320	Nut - Push	9 18 2	32104-118	Screw - Pan Hd.	9 35 2
3290-326	Nut - Push	1 15 2	32104-121	Screw - Hex Flange Hd.	7 31 3
3290-359	Screw	9 28 1	32120-46	Ring - Retaining	7 1 2
3290-378	Tie - Cable	9 30 4	32120-46	Ring - Retaining	8 13 1
3290-378	Tie Wrap	10 9 2	32121-9	Pin - Roll	7 19 2
3290-422	Nut - Push	8 4 1	32121-50	Pin - Roll	9 31 2
3290-456	Washer - Belleville	8 37 1	32121-106	Pin - Coil	5 6 3
3290-461	Washer - Belleville	7 16 2	32122-32	Screw	1 18 1
3290-461	Washer - Belleville	4 24 4	32128-20	Nut - Lock	4 17 4
3290-476	Fastener - Panel	7 37 1	32128-32	Nut - Flange Lock	6 51 1
3290-477	Washer - Curved	5 14 1	32128-35	Nut - Flange Lock	10 18 1
3296-2	Nut - Lock	1 9 4	32144-4	Screw - Hex Flange Hd.	1 27 6
3296-2	Nut - Lock	9 23 1	32144-4	Screw - Hex Flange Hd.	7 20 2
3296-23	Nut - Lock	7 25 2	32144-4	Screw - Self Tapping	5 8 2
3296-29	Nut - Lock	10 12 2	32144-86	Screw - Hex Washer Hd.	5 25 6
3296-29	Nut - Lock	8 25 7	32144-110	Screw - Hex Washer Hd.	3 17 9
3296-29	Nut - Lock	2 37 16	32151-33	Ring - Snap	3 7 1
3296-39	Nut - Lock	7 15 2	32151-66	Ring - Retaining	9 5 1
3296-39	Nut - Lock	4 20 1	505-101	Grease - 14.5 oz. Cartridge	6 * 1
3296-39	Nut - Lock	8 32 1	505-129	Sealant - 100g Tube	3 * 1
3296-42	Nut	9 42 4			

Accessories

Description	Model / Parts No.	Description	Model / Parts No.
Tire Chains Kit	63-3040	110V Starter Kit	37-4630
Drift Breaker	66-7980	Light Kit	69-7940
Snow Cab	68-9500	Weight Kit	74-1190
Differential Kit	38038	12V Starter Kit	66-7700

