



Count on it.

Form No. 3354-177 Rev C

Operator's Manual

38in and 42in Twin Bagger for TimeCutter® Z Riding Mowers

Model No. 79214—Serial No. 260000001 and Up

Model No. 79215—Serial No. 260000001 and Up

Contents

Introduction.....	2
Safety.....	3
Safety and Instructional Decals.....	3
Setup.....	4
1 Installing the Weight.....	4
2 Installing the Quick Attach Bracket.....	5
3 Assembling the Bagger.....	5
4 Installing the Bagger Assembly.....	5
5 Installing the New Pivot Rod.....	6
6 Installing the Ring Baffles for 42 inch Mower Only.....	7
7 Installing the Blades for 42 inch Mower Only.....	7
8 Installing the Chute and Discharge Tube.....	8
Operation.....	9
Emptying the Grass Bags.....	9
Clearing Obstructions from the Bagger.....	10
Removing the Bagger.....	10
Operating Tips.....	11
Maintenance.....	13
Recommended Maintenance Schedule(s).....	13
Inspecting the Bagger Attachment.....	13
Inspecting the Mower Blades.....	13
Caring for the Grass Bags.....	14
Cleaning the Bagger Attachment.....	14
Storage.....	14
Storing the Bagger Attachment.....	14

Introduction

Read this information carefully to learn how to operate and maintain your product properly and to avoid injury and product damage. You are responsible for operating the product properly and safely.

You may contact Toro directly at www.Toro.com for product and accessory information, help finding a dealer, or to register your product.

Whenever you need service, genuine Toro parts, or additional information, contact an Authorized Service Dealer or Toro Customer Service and have the model and serial numbers of your product ready. Figure 1 identifies the location of the model and serial numbers on the product. Write the numbers in the space provided.

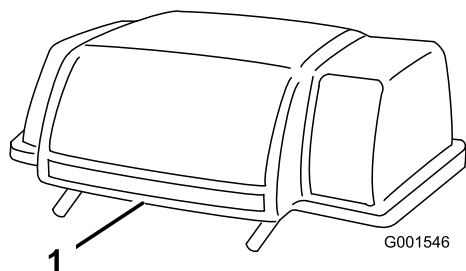


Figure 1

1. Model and serial number location

Model No. _____
Serial No. _____

This manual identifies potential hazards and has safety messages identified by the safety alert symbol (Figure 2), which signals a hazard that may cause serious injury or death if you do not follow the recommended precautions.



Figure 2

1. Safety alert symbol

This manual uses 2 other words to highlight information.

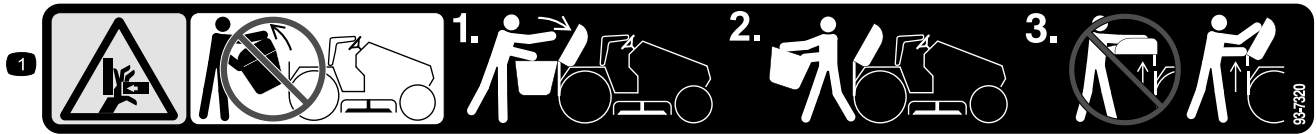
Important calls attention to special mechanical information and **Note** emphasizes general information worthy of special attention.

Safety

Safety and Instructional Decals

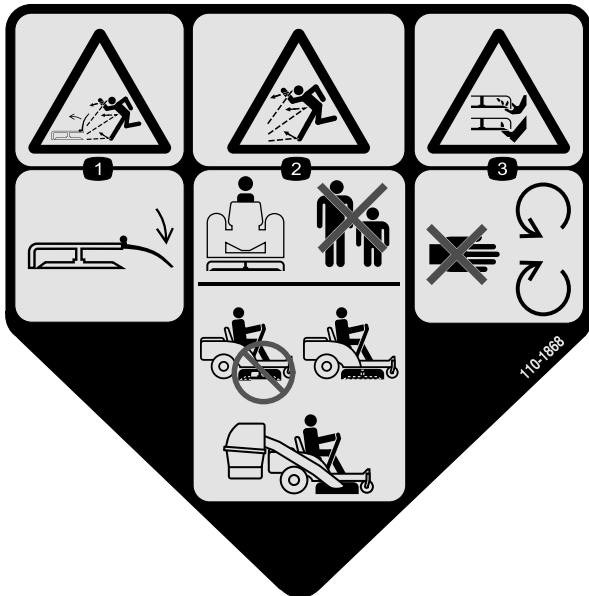


Safety decals and instructions are easily visible to the operator and are located near any area of potential danger. Replace any decal that is damaged or lost.



93-7320

1. Crushing hazard of hand—do not remove the whole bagger from the machine; open the bagger top and then remove the bag(s) from the bagger. Do not remove the bagger top when it is closed; open the bagger top and then remove it.



110-1868

1. Thrown object hazard, mower—keep the deflector in place.
2. Thrown object hazard—Keep bystanders a safe distance from the machine; Do not operate the without grass collection system in place.
3. Cutting/dismemberment of hand or foot—stay away from moving parts.

Setup

Loose Parts

Use the chart below to verify that all parts have been shipped.

Procedure	Description	Qty.	Use
1	Weight	1	Install the weight.
	Bolt (3/8 x 2-1/4 inch)	2	
	Washer(3/8 inch)	4	
	Locknuts (3/8 inch)	2	
2	Bagger Quick Attach Bracket	1	Install the quick attach bracket.
	Bolt(3/8 x 1 inch)	4	
	Locknut (3/8 inch)	4	
	Washer (3/8 inch)	4	
3	Bolt (1/4 x 3/4 inch)	2	Assemble the Bagger
	Locknut (1/4 inch)	2	
4	Bagger	1	Install the bagger assembly.
	Grass Bag	2	
5	Pivot rod	1	Install the new pivot rod.
	Nut	1	
6	Ring baffle, front	2	Install the ring baffles (42 inch mower only).
	Ring baffle, rear	2	
	Bolt, (1/4 x 5/8 inch)	12	
	Locknut (1/4 inch)	12	
7	Blade	2	Install the blades (42 inch mower only).
8	Chute	1	Install the chute and discharge tube.
	Discharge tube	1	

1

Installing the Weight

Parts needed for this procedure:

1	Weight
2	Bolt (3/8 x 2-1/4 inch)
4	Washer(3/8 inch)
2	Locknuts (3/8 inch)

Procedure



The bagger adds a lot of weight to the rear of the machine and may cause an unstable condition which could result in a loss of control.

Install the front weight.

1. Remove the foot plate to access the existing holes in the machine frame (Figure 3).

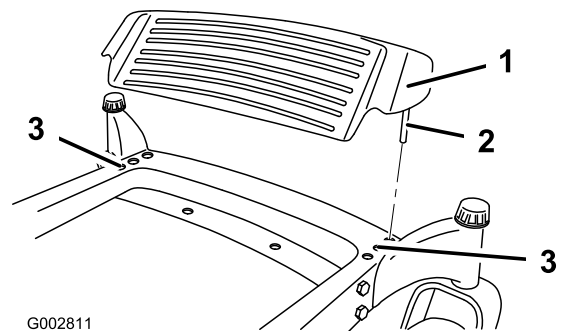


Figure 3

1. Foot rest
2. Rod
3. Hole positions

2. Attach the weight to the front of the machine frame with two bolts (3/8 x 2-1/4 inch), four washers (3/8 inch), and two locknuts (3/8 inch) as shown in Figure 4.

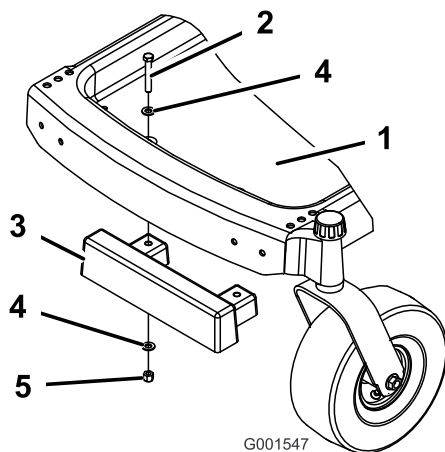


Figure 4

1. Footrest frame
2. Bolt (3/8 x 2-1/4 inch)
3. Front weight
4. Washer (3/8 inch)
5. Nut (3/8 inch)

3. Install the footrest into the footrest frame while placing the rods in the same hole positions

Important: When you remove the twin bagger, remember to remove the front weight.

2

Installing the Quick Attach Bracket

Parts needed for this procedure:

1	Bagger Quick Attach Bracket
4	Bolt(3/8 x 1 inch)
4	Locknut (3/8 inch)
4	Washer (3/8 inch)

Procedure

1. From the back of the mower, slide the quick attach bracket along the outside of the rear frame.
2. Align the holes in the rear frame and the bagger mounting bracket (Figure 5).

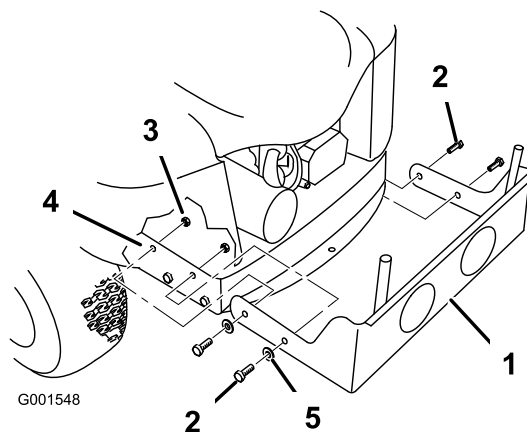


Figure 5

1. Quick attach bracket
2. Bolts (3/8 x 1 inch)
3. Locknut (3/8 inch)
4. Rear frame
5. Washer (3/8 inch)

3. Secure the bagger mounting bracket to the rear frame with 4 bolts (3/8 x 1 inch), 4 washers (3/8 inch), and 4 locknuts (3/8 inch) (Figure 5).

3

Assembling the Bagger

Parts needed for this procedure:

2	Bolt (1/4 x 3/4 inch)
2	Locknut (1/4 inch)

Procedure

If necessary, install the bagger frame to the cover. Attach the frame assembly to the bagger cover with two bolts (1/4 x 3/4 inch) and two locknuts (1/4 inch) (Figure 6).

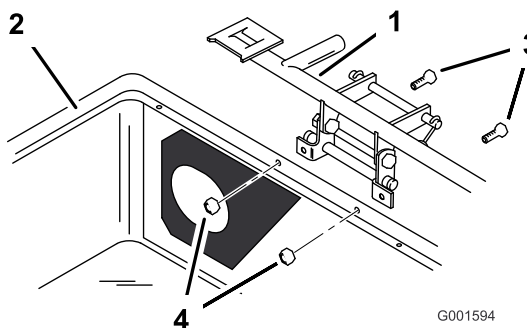


Figure 6

1. Frame assembly
2. Bagger cover
3. Bolt, 1/4 x 3/4 inch
4. Locknut (1/4 inch)

4

Installing the Bagger Assembly

Parts needed for this procedure:

1	Bagger
2	Grass Bag

Procedure

1. Carefully lift the bagger top and slide it onto the quick attach bracket (Figure 7). The bagger top is easier to install if two people work together.

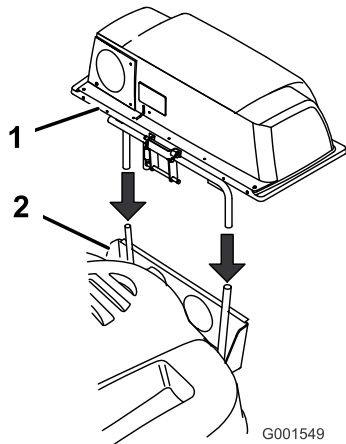


Figure 7

1. Bagger top
2. Quick attach bracket

2. Install the bags by sliding the bag frame hooks onto the retaining brackets (Figure 8).

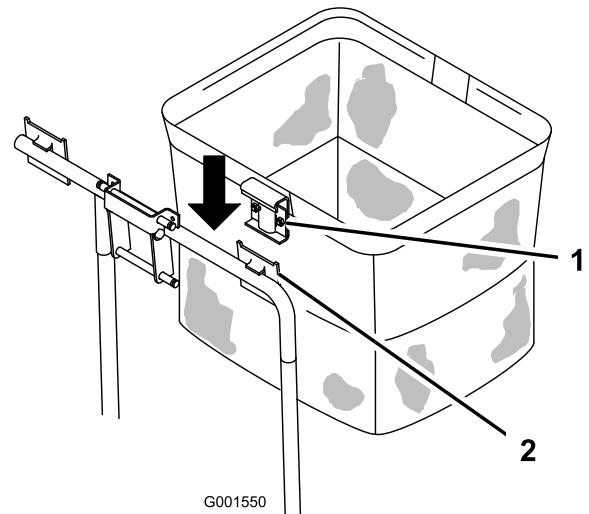


Figure 8

1. Bag frame hook
2. Retaining bracket

3. Lower the bagger top onto the bags. Then push down on both bag retainer handles until they lock on the bag frame (Figure 9).

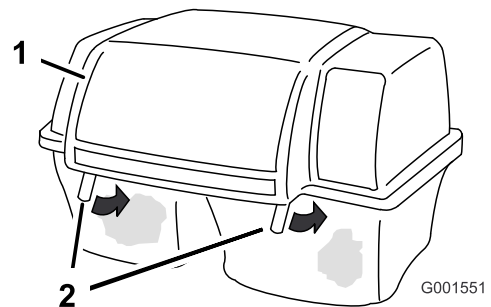


Figure 9

1. Bagger top
2. Bag retainer handles



If you remove the spring-loaded bagger top when it is closed (in the down position), the top may suddenly fly open and you or someone else may be bruised, pinched, or injured in another way.

Always open (raise) the bagger top before you remove or install it on the quick-attach bracket.

5

Installing the New Pivot Rod

Parts needed for this procedure:

1	Pivot rod
1	Nut

Procedure

1. Lift the grass deflector and remove the mulch plug, if present.

- Remove the nut, under the mower, holding the pivot rod and grass deflector to the mower (Figure 10).

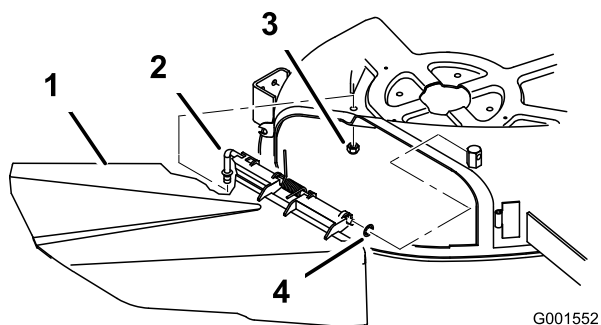


Figure 10

- Grass deflector
- Pivot rod
- Nut
- O-ring

- Remove the pivot rod and grass deflector from the mower (Figure 10)
- Insert the new pivot rod into the short stand-off on the deck. Secure the rear end of rod into the mower with a nut (3/8 inch) (Figure 11).

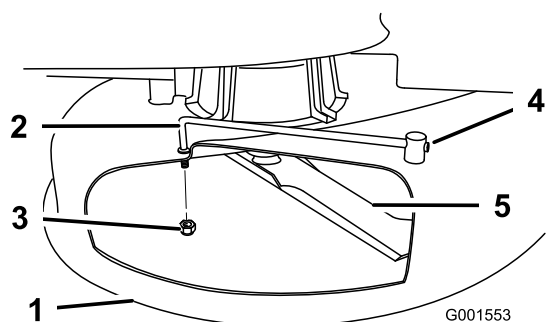


Figure 11

- Mower
- Pivot rod
- Nut
- Stand-off
- Right side blade

6

Installing the Ring Baffles for 42 inch Mower Only

Parts needed for this procedure:

2	Ring baffle, front
2	Ring baffle, rear
12	Bolt, (1/4 x 5/8 inch)
12	Locknut (1/4 inch)

Procedure

- Install two front ring baffles to the mower as shown in Figure 12. Use 6 bolts (1/4 x 5/8 inch) and 6 locknuts (1/4 inch) to secure the baffles to the mower.

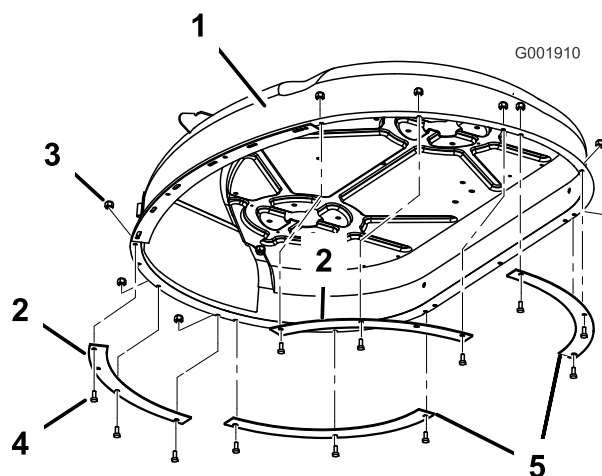


Figure 12

- 42 mower deck
- Front ring baffle
- Lock nut (1/4 inch)
- Bolt, (1/4 x 5/8 inch)
- Rear ring baffle

- Install the two rear ring baffles to the mower as shown in Figure 12. Use 6 bolts (1/4 x 5/8 inch) and 6 locknuts (1/4 inch) to secure the baffles to the mower.
- Torque all fasteners to 90-110 ft-lb (122-150 N·m).

7

Installing the Blades for 42 inch Mower Only

Parts needed for this procedure:

2	Blade
---	-------

Procedure

1. Hold the blade using a rag or thickly-padded glove (Figure 11 and Figure 13).
2. Remove the blade bolt, curved washer, blade stiffener, and blade from the spindle shaft (Figure 13).

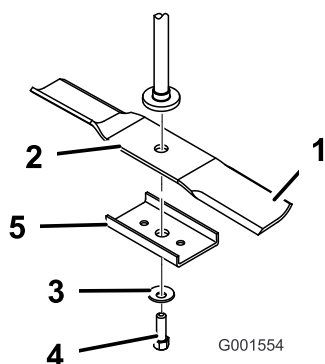


Figure 13

- | | |
|-----------------------|--------------------|
| 1. Sail area of blade | 4. Blade bolt |
| 2. Blade | 5. Blade stiffener |
| 3. Curved washer | |

3. Install the blade onto the spindle shaft (Figure 13).

Important: The curved part of the blade or sail, must be pointing upward, toward the inside of the mower to ensure proper cutting (Figure 13).

4. Install the blade stiffener, the curved washer (cupped side toward the blade), and the blade bolt (Figure 13). Torque the blade bolt to 35-65 ft-lb (47-88 N·m).
5. Repeat this procedure for the opposite blade.

8

Installing the Chute and Discharge Tube

Parts needed for this procedure:

1	Chute
1	Discharge tube

Procedure

1. Slide the chute into position with the rear hook around the deflector rod and the front latch aligned. Insert the locking pin (Figure 14).

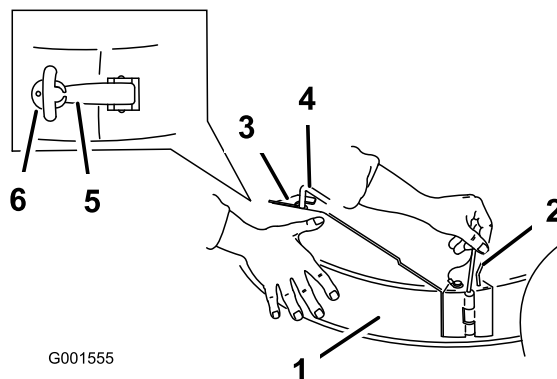


Figure 14

- | | |
|----------------|--------------------|
| 1. Chute | 4. Deflector rod |
| 2. Locking pin | 5. Flexible latch |
| 3. Rear hook | 6. Notched bracket |

2. Hook the flexible latch on the chute into the notched bracket on the back of the mower (Figure 14).
3. Slide the discharge tube into the opening in the grass catcher (Figure 15).
4. Slide the discharge tube over the end of the chute, ensuring that the tab on the chute snaps into the square hole in the discharge tube (Figure 15).

Operation

Note: Determine the left and right sides of the machine from the normal operating position.

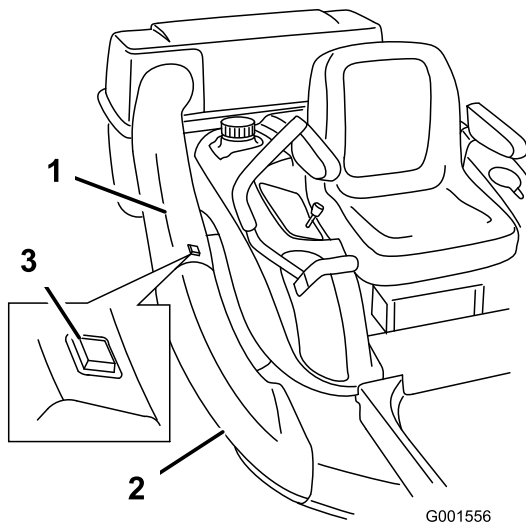


Figure 15

1. Discharge tube
2. Chute
3. Tab



To avoid personal injury, follow these procedures:

- Become familiar with all operating and safety instructions in the *Operator's Manual* for the mower before using this attachment.
- Never remove the discharge tube, bags, bagger top, or the chute while the engine is running.
- Always shut the engine off and wait for all moving parts to stop before clearing an obstruction from the bagging system.
- Never do maintenance or repairs while the engine is running.

Emptying the Grass Bags

Be careful when lifting or handling a grass bag that is full. To empty the grass bags:

1. Stop the mower, set the parking brake, and disengage the power take off (PTO). Stop the engine and remove the ignition key.
2. Pull up on both bag retainer handles until they unlock from the bag frame (Figure 16). Open (raise) the bagger top.

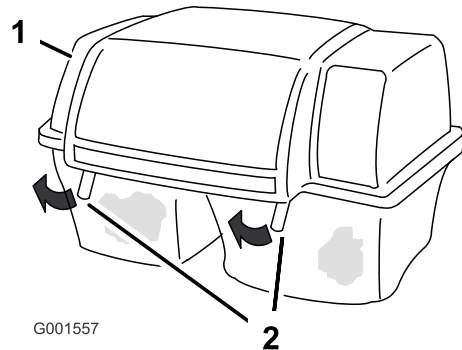


Figure 16

1. Bagger top
2. Bag retainer handles

3. Compress debris into the bags. With both hands, lift up on the bag and unhook it from the retaining bracket. Empty the bag. Repeat the procedure for the other bag.

4. Install the bags by sliding the bag frame hooks onto the retaining brackets (Figure 17).

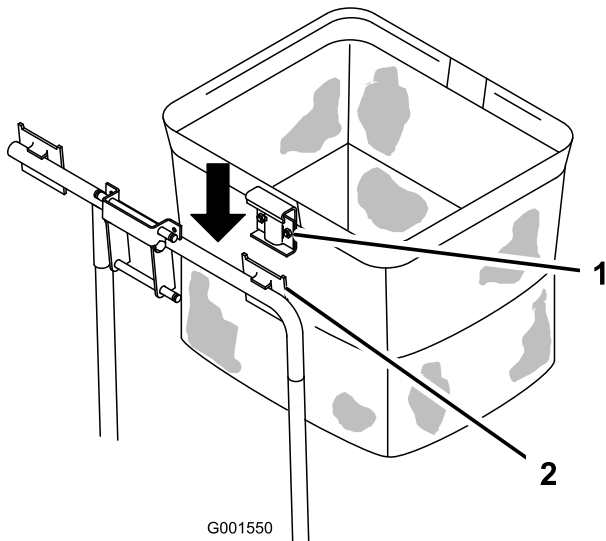


Figure 17

1. Bag frame hook
2. Retaining bracket

5. Lower the bagger top onto the bags. Then push down on both bag retainer handles until they lock on the bag frame.

Clearing Obstructions from the Bagger

1. Stop the mower, shift into neutral, set the parking brake, disengage the PTO, stop the engine, and remove the ignition key. Wait for all moving parts to stop.
2. Check the grass bags and empty them if they are full.
3. Remove and separate the discharge tube and chute from the bagger top and mower. Using a stick or similar object, carefully remove and clear the obstruction from the mower, discharge tube, chute, and the bagger top.
4. After you remove the obstruction, install the complete bagger system and resume operation.

Removing the Bagger



An uncovered discharge opening could allow the lawn mower to throw objects in the operator or bystander's direction and result in serious injury. Also, contact with the blade could occur.

Never operate the lawn mower unless you install a cover plate, a mulch plate, or a grass chute and catcher.

1. Push on the tab on the chute and pull the discharge tube free from the chute and grass catcher (Figure 15).
2. Release the flexible latch and remove the locking pin securing the chute to the mower. Remove the chute from the mower (Figure 14).



If you remove the spring-loaded bagger top when it is closed (in the down position), the top may suddenly fly open and you or someone else may be bruised, pinched, or injured in another way.

Always open (raise) the bagger top before you remove or install it on the quick-attach bracket.

3. Raise the bagger top and remove the grass bags from the bag frame (Figure 18).

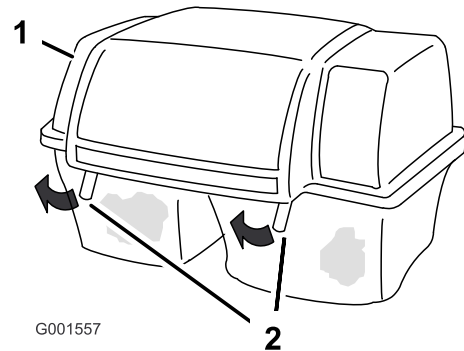


Figure 18

1. Bagger top
2. Bag retainer handles

4. Carefully lift the bagger top and slide it off the quick attach bracket (Figure 19). The bagger top is easier to remove if two people work together.

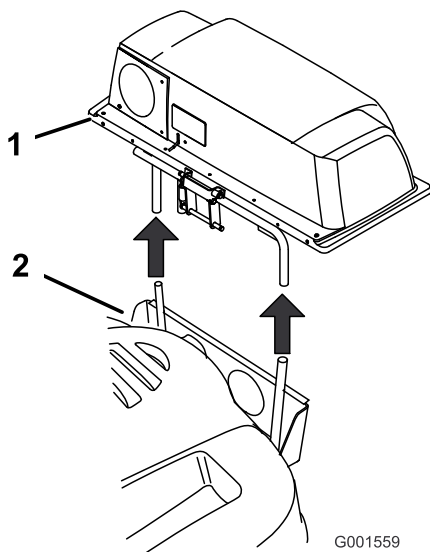


Figure 19

1. Bagger top
2. Quick attach bracket

5. Store all bagger parts in a convenient place.

Replacing the Grass Deflector



An uncovered discharge opening could allow the lawn mower to throw objects in the operator or bystander's direction and result in serious injury. Also, contact with the blade could occur.

Never operate the lawn mower unless you install a cover plate, a mulch plate, or a grass chute and catcher.

1. Locate the grass deflector and hardware in Figure 20.
2. Insert the rod at the front of grass deflector into the short stand-off on the deck. Secure the rear part of the rod into the mower with a nut (3/8 inch) (Figure 20).

Important: The grass deflector must be spring loaded in the down position. Lift the deflector up to test that it snaps to the full down position.

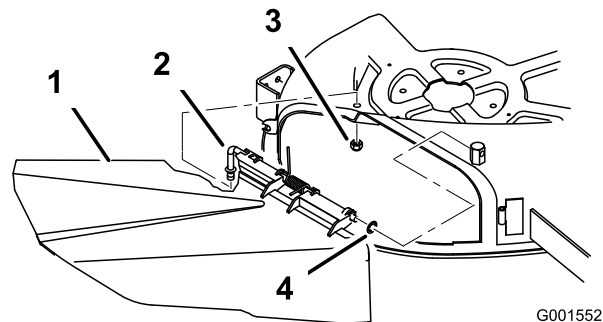


Figure 20

1. Grass deflector
2. Pivot rod
3. Nut
4. O-ring

Operating Tips

Tips for Bagging

Size

Remember that the mower is longer and wider with this attachment installed. By turning too sharply in confined places you may damage the attachment.

Trimming

Always trim with the left side of the mower. Do not trim with the right side of the mower because you could damage the bagger's chute and discharge tube.

Cutting Height

Do not set the mower cutting height too low because long grass surrounding the mower can prevent air from getting under the mower and entering the bagging system. If enough air doesn't get under the mower, the bagging system will plug.

Cutting Frequency

Cut the grass often, especially when it grows rapidly. You will have to cut your grass twice if it gets excessively long.

Cutting Technique

For best lawn appearance, be sure to slightly overlap the mower into the previously cut area. This helps reduce the load on the engine and reduces the chance of plugging the chute and discharge tube.

Bagging Speed

Most often you will bag with the mower throttle in the Fast position and drive at a normal ground speed.

However, in extremely dry and dusty grass, you may want to slightly reduce the throttle speed and increase the ground speed of the mower. The bagging system may plug if you drive too fast and the engine speed gets too slow. On hills it may be necessary to slow the mower ground speed. This helps maintain the engine speed and bagging efficiency. Mow downhill whenever possible.



As the bagger fills, extra weight is added to the back of the machine. If you stop and start suddenly on hills, you may lose steering control or the machine may tip.

- **Do not start or stop suddenly when going uphill or downhill. Avoid uphill starts.**
- **If you do stop the machine when going uphill, disengage the PTO. Then back down the hill using a slow speed.**
- **Do not change speeds or stop on slopes.**

Bagging Long Grass

Bagging Long Grass Excessively long grass is heavy and may not be propelled completely into the grass bags. If this happens, the discharge tube and chute may plug. To avoid plugging the bagging system, mow the grass at a high height of cut, then lower the mower to your normal cutting height and repeat the bagging process.

Bagging Wet Grass

Always try to cut grass when it is dry because your lawn will have a neat appearance. If you must cut wet grass, use the conventional side discharge feature of the mower. Several hours later, when the clippings are dry, install the complete bagger attachment and vacuum up the grass clippings.

Signs of Plugging

As you are bagging, a small amount of grass clippings normally blow out the front of the mower. An excessive amount of clippings blowing out indicates that the bags are full or the system is plugged.

Maintenance

Note: Determine the left and right sides of the machine from the normal operating position.

Recommended Maintenance Schedule(s)

Maintenance Service Interval	Maintenance Procedure
After the first 10 hours	<ul style="list-style-type: none">• Inspect the bagger
Before each use or daily	<ul style="list-style-type: none">• Clean the bagger
Before storage	<ul style="list-style-type: none">• Inspect the bagger• Clean the bagger



If you leave the key in the ignition switch, someone could accidentally start the engine and seriously injure you or other bystanders.

Remove the key from the ignition and disconnect the wire from the spark plug before you do any maintenance. Set the wire aside so that it does not accidentally contact the spark plug.



Debris built up in the engine compartment, if not removed, could be ignited by a hot engine. A fire in the engine compartment could burn you and others and can damage property.

- Before using and while the engine is cool, check for debris in the engine compartment.
- Keep the machine free of grass, leaves, or other debris build-up.
- Clean up oil or fuel spillage and fuel soaked debris.
- Allow the machine to cool before storing.

Inspecting the Bagger Attachment

Service Interval: After the first 10 hours

Before storage

Inspect the bagger attachment after the first 10 hours of operation, and monthly thereafter.

1. Check the chute, discharge tube, and the bagger top. Replace these parts if they are cracked or broken.
2. Tighten all nuts, bolts, and screws.
3. Inspect the grass bags for deterioration.



You or bystanders could be severely injured by flying debris or thrown objects that may pass through torn, worn, or deteriorated grass bags.

- Frequently check the grass bags for holes, rips, wear, and other deterioration.
- Do not wash the grass bags.
- If the bag has deteriorated, install new grass bags supplied by the manufacturer of this bagger attachment.

Inspecting the Mower Blades

Inspect the mower blades regularly and whenever a blade strikes a foreign object.

If the blades are badly worn or damaged, install new blades. Refer to your mower or mower *Operator's Manual* for complete blade maintenance.

Caring for the Grass Bags

Washing the grass bags is not recommended.

To prevent rapid deterioration of the bag material, store the bags where they will dry completely after each use.

Cleaning the Bagger Attachment

Service Interval: Before each use or daily

Before storage

1. After each use, remove and wash the inside and outside of the bagger top, discharge tube, chute, and the underside of the mower, using water sprayed from a garden hose. Use a mild automotive detergent to remove stubborn dirt.
2. Make sure you remove matted grass from all parts.
3. After washing, let all of the parts dry thoroughly. Do not wash the grass bags.

Storage

Storing the Bagger Attachment

1. Clean the bagger attachment; refer to Cleaning the Bagger Attachment.
2. Inspect the bagger attachment for damage; refer to Inspecting the Bagger Attachment.
3. Make sure the grass bags are empty and thoroughly dry.
4. Store the bagger in a clean, dry place, out of direct sunlight. This protects the plastic parts and extends the life of the bagger. If you must store the bagger outside, cover it with a weatherproof cover.

Notes:



Consumer
TimeCutter

The Toro Total Coverage Guarantee

A Two-Year Full Warranty (Limited Warranty for Commercial Use)

Conditions and Products Covered

The Toro Company and its affiliate, Toro Warranty Company, pursuant to an agreement between them, jointly promise to repair any Toro Product used for normal residential purposes* if defective in materials or workmanship. The following time periods apply from the date of purchase:

Products	Warranty Period
All TimeCutter Mowers and Attachments	2 year full warranty
All Batteries	1 year full warranty

This warranty covers both the cost of parts and labor, and transportation within a fifteen mile radius of the servicing dealer. This warranty applies to all consumer TimeCutter Mowers and their attachments.

Normal residential purposes means use of the product on the same lot as your home. Use at more than one location is considered commercial use, and the commercial use warranty would apply.

Limited Warranty for Commercial Use

Toro Consumer Products and attachments used for commercial, institutional, or rental use are warranted against defects in materials or workmanship for the following time periods from the date of purchase:

Products	Warranty Period
Air Cooled Gas Engines	90 day limited warranty
All other items	30 day limited warranty

Instructions for Obtaining Warranty Service

If you think that your Toro Product contains a defect in materials or workmanship, follow this procedure:

1. Contact any Toro Authorized or Master Service Dealer to arrange service at their dealership. To locate a dealer convenient to you, refer to the Yellow Pages of your telephone directory (look under "Lawn Mowers") or access our website at www.Toro.com. U.S. Customers may also call toll free: 866-854-9035 to use our 24-hour Toro dealer locator system.
2. Bring the product and your proof of purchase (sales receipt) to the Service Dealer.

If for any reason you are dissatisfied with the Service Dealer's analysis or with the assistance provided, contact us at:

Customer Care Department, Consumer Division
Toro Warranty Company
8111 Lyndale Avenue South
Bloomington, MN 55420-1196
Toll Free: 866-216-6029 (U.S. customers)
Toll Free: 866-216-6030 (Canada customers)

Owner Responsibilities

You must maintain your Toro Product by following the maintenance procedures described in the operator's manual. Such routine maintenance, whether performed by a dealer or by you, is at your expense.

Items and Conditions Not Covered

There is no other express warranty except for special emission system coverage on some products. This express warranty does not cover:

- Cost of regular maintenance service or parts, such as filters, fuel, lubricants, tune-up parts, blade sharpening, brake and clutch adjustments.
- Any product or part which has been altered or misused or required replacement or repair due to normal wear, accidents, or lack of proper maintenance.
- Repairs necessary due to improper fuel, contaminants in the fuel system, or failure to properly prepare the fuel system prior to any period of non-use over three months.
- Pickup and delivery charges for distances beyond a fifteen mile radius from an Authorized Toro Service Dealer.

All repairs covered by this warranty must be performed by an Authorized Toro Service Dealer using Toro approved replacement parts.

General Conditions

Repair by an Authorized Toro Service Dealer is your sole remedy under this warranty.

Neither The Toro® Company nor Toro Warranty Company is liable for indirect, incidental or consequential damages in connection with the use of the Toro Products covered by this warranty, including any cost or expense of providing substitute equipment or service during reasonable periods of malfunction or non-use pending completion of repairs under this warranty.

Some states do not allow exclusions of incidental or consequential damages, or limitations on how long an implied warranty lasts, so the above exclusions and limitations may not apply to you.

This warranty gives you specific legal rights, and you may also have other rights which vary from state to state.

Countries Other than the United States or Canada

Customers who have purchased Toro products exported from the United States or Canada should contact their Toro Distributor (Dealer) to obtain guarantee policies for your country, province, or state. If for any reason you are dissatisfied with your Distributor's service or have difficulty obtaining guarantee information, contact the Toro importer. If all other remedies fail, you may contact us at Toro Warranty Company.