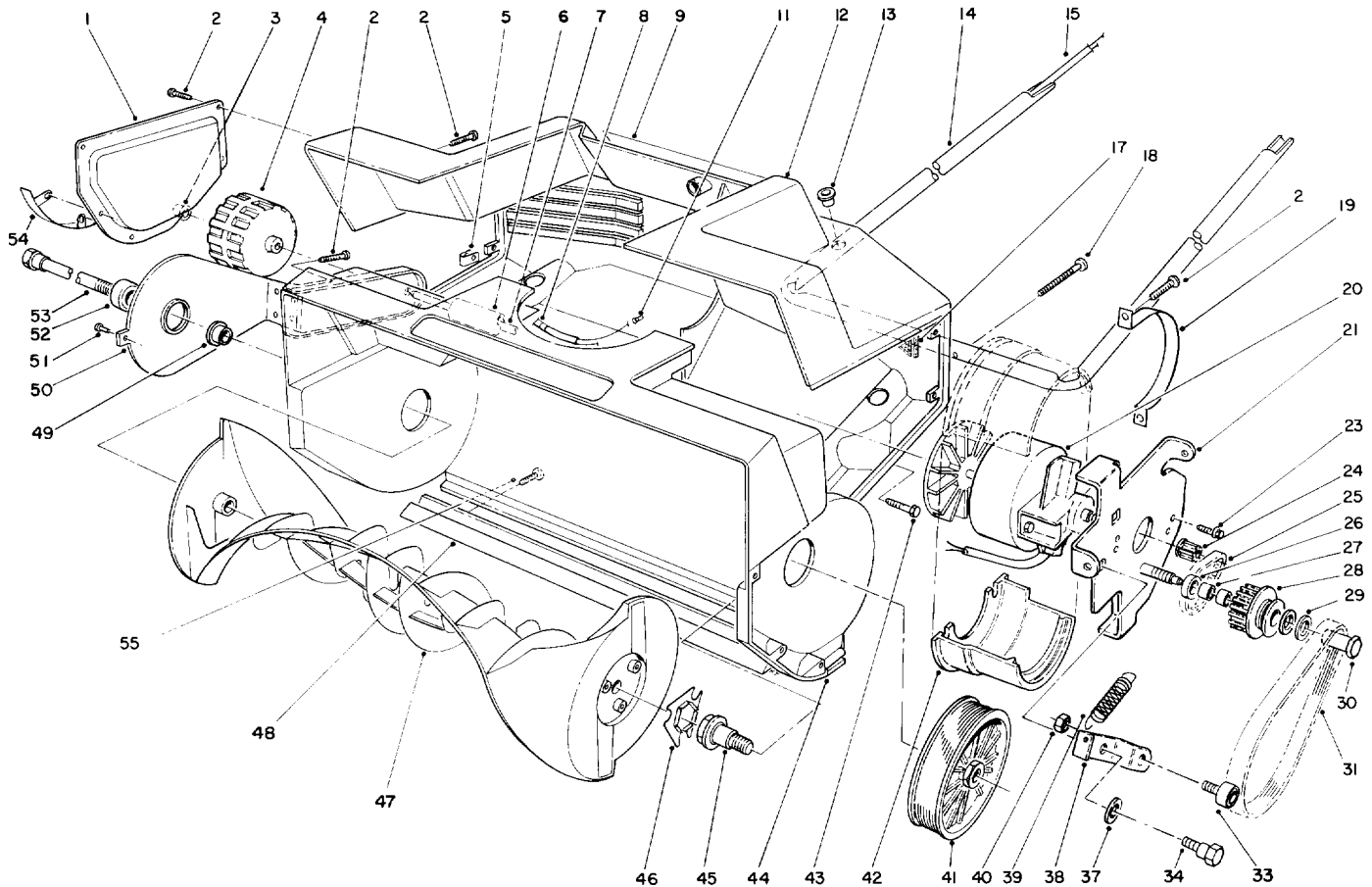




MODEL NO. 38025-4900001 & UP

PARTS
CATALOG

1800 POWER CURVE SNOWTHROWER

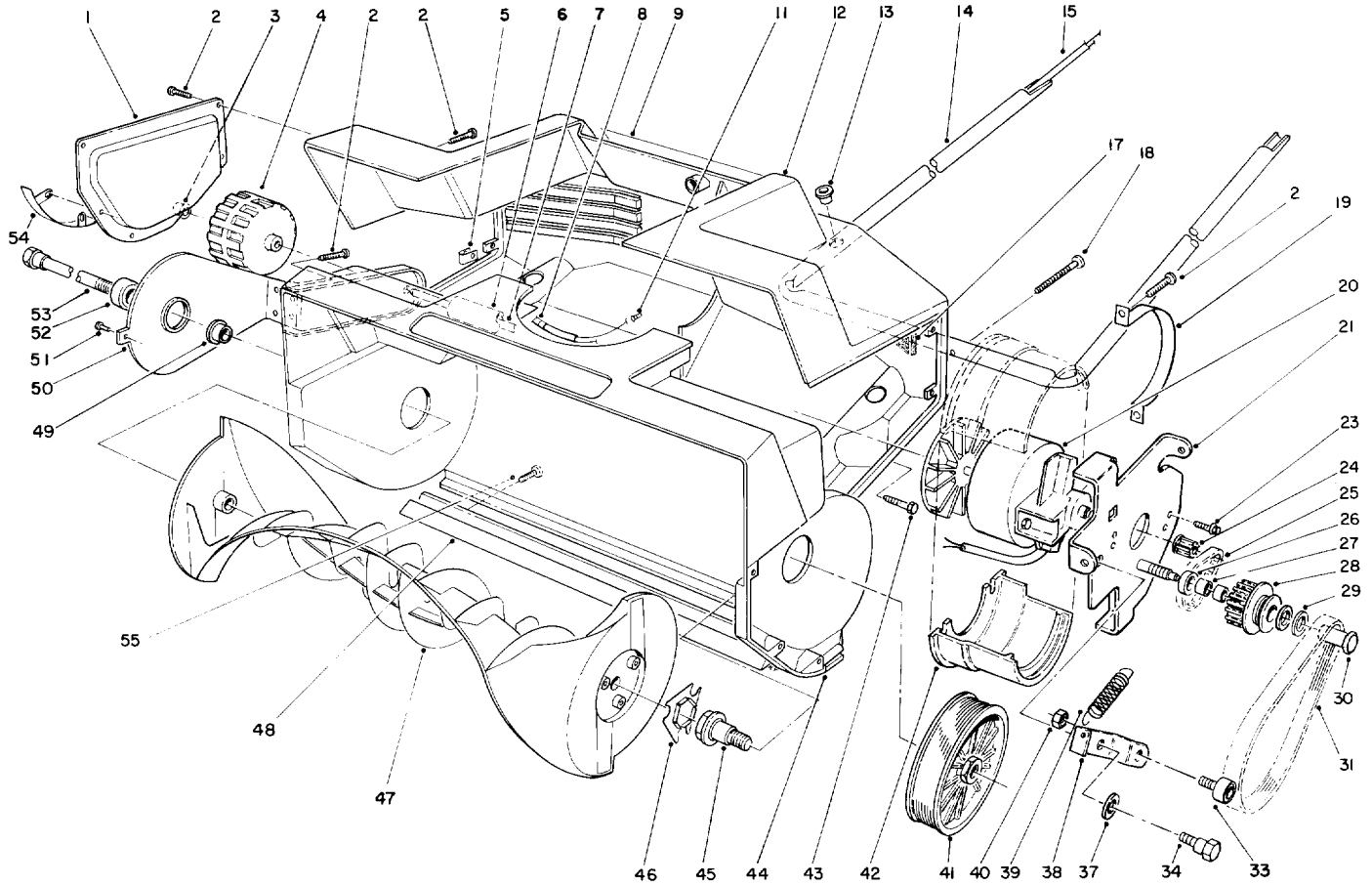


C-0455

HOUSING & ROTOR ASSEMBLY

| Ref. No. | Part No. | Description | No. Used |
|----------|-----------|---------------------|----------|
| 1 | 73-0220 | Plate - Side | 2 |
| 2 | 32104-121 | Screw - Pan Hd. | 23 |
| 3 | 32112-1 | Push Nut | 2 |
| 4 | 73-5720 | Wheel | 2 |
| 5 | 249-42 | U-Clip - Tinnerman | 4 |
| 6 | 73-0250 | Sleeve - Axle | 1 |
| 7 | 73-0370 | Shaft - Axle | 1 |
| 8 | 64-5820 | Relief - Strain | 1 |
| 9 | 73-0450 | Decal - Danger | 1 |
| 11 | 218-511 | Connector | 2 |
| 12 | 73-0302 | Shroud - Housing | 1 |
| 13 | 256-307 | Bushing | 1 |
| 14 | 73-0280 | Tube - Lower Handle | 1 |
| 15 | 73-3630 | Wire Harness | 1 |
| 17 | 73-1800 | Filter - Foam | 1 |
| 18 | 32144-88 | Screw - Pan Hd. | 4 |
| 19 | 73-0120 | Strap - Motor | 1 |

| Ref. No. | Part No. | Description | No. Used |
|----------|-----------|---|----------|
| 20 | 73-3520 | Motor | 1 |
| 21 | 73-8680 | Motor Plate Assembly | 1 |
| 23 | 32144-100 | Screw - Hex. Washer Hd. | 2 |
| 24 | 73-3660 | Pulley - Driver | 1 |
| 25 | 73-0160 | Belt - Timing | 1 |
| 26 | 73-3580 | Washer | 1 |
| 27 | 252-102 | Bearing - Needle | 2 |
| 28 | 73-3810 | Pulley Assembly - Idler (Incl. Ref. #27) | 1 |
| 29 | 73-0041 | Washer - Thrust | 2 |
| 30 | 73-3530 | Bolt - Idler | 1 |
| 31 | 61-8801 | Belt - Drive | 1 |
| 33 | 73-5730 | Bearing Assembly (Incl. Ref. #40) | 1 |
| 34 | 27-0411 | Screw - Shoulder | 1 |
| 37 | 25-5641 | Washer | 1 |
| 38 | 73-3600 | Bracket - Idler | 1 |

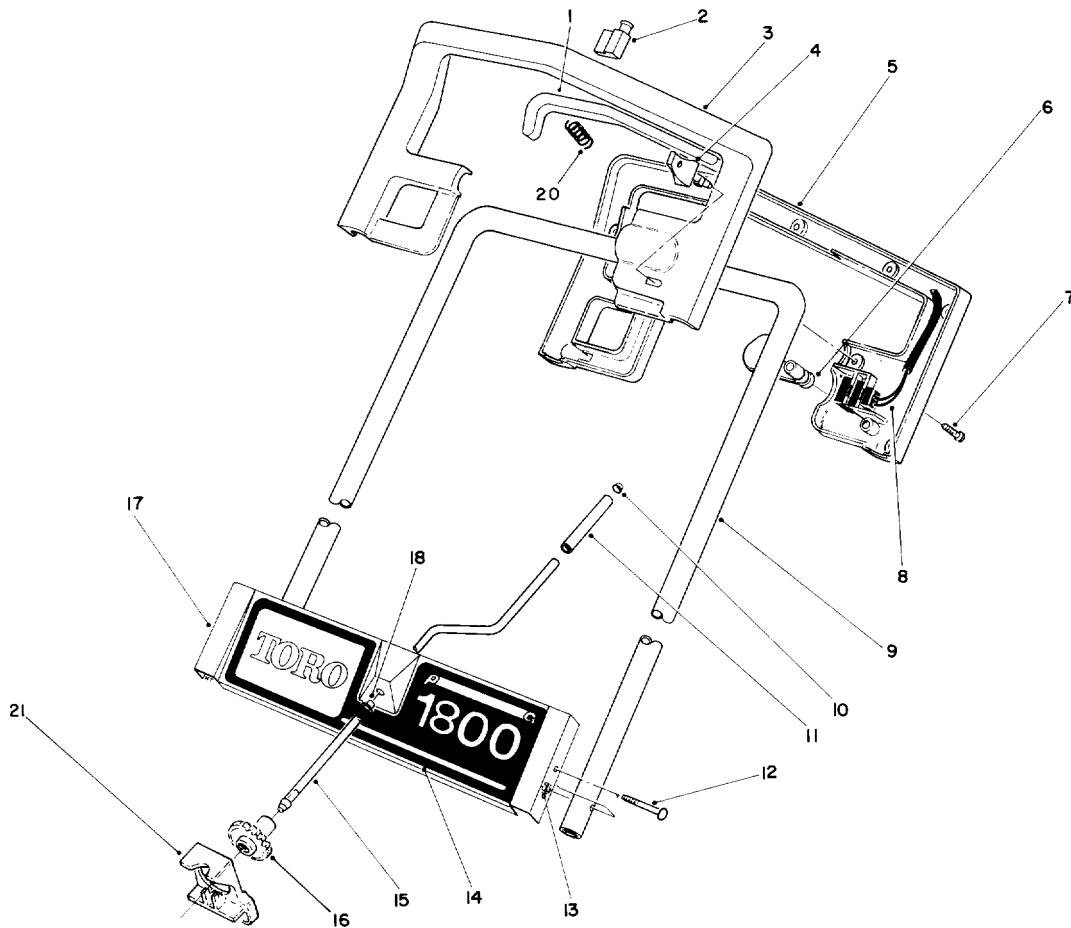


C-0455

HOUSING & ROTOR ASSEMBLY (CONTINUED)

| Ref. No. | Part No. | Description | No. Used |
|----------|----------|-----------------------|----------|
| 39 | 73-3680 | Spring | 1 |
| 40 | 3296-47 | Nut - Lock | 1 |
| 41 | 73-3550 | Pulley - Driven | 1 |
| 42 | 73-3650 | Clamp - Motor Bracket | 2 |
| 43 | 32104-97 | Screw - Hex. Hd. | 2 |
| 44 | 73-3640 | Housing - Rotor | 1 |
| 45 | 73-0990 | Shaft - Rotor Driver | 1 |
| 46 | 73-0860 | Coupler - Rotor | 1 |
| 47 | 73-8590 | Rotor | 1 |

| Ref. No. | Part No. | Description | No. Used |
|----------|-----------|------------------------------------|----------|
| 48 | 73-3690 | Scraper | 1 |
| 49 | 73-8580 | Bushing | 1 |
| 50 | 73-1900 | Bracket - Wheel (Incl. Ref.#52) | 2 |
| 51 | 3290-271 | Rivet - Pop | 2 |
| 52 | 61-8780 | Bearing - Ball | 2 |
| 53 | 73-0020 | Shaft - Rotor | 1 |
| 54 | 73-1570 | Skid - Housing | 2 |
| 55 | 32144-108 | Screw - Pan Hd. | 2 |

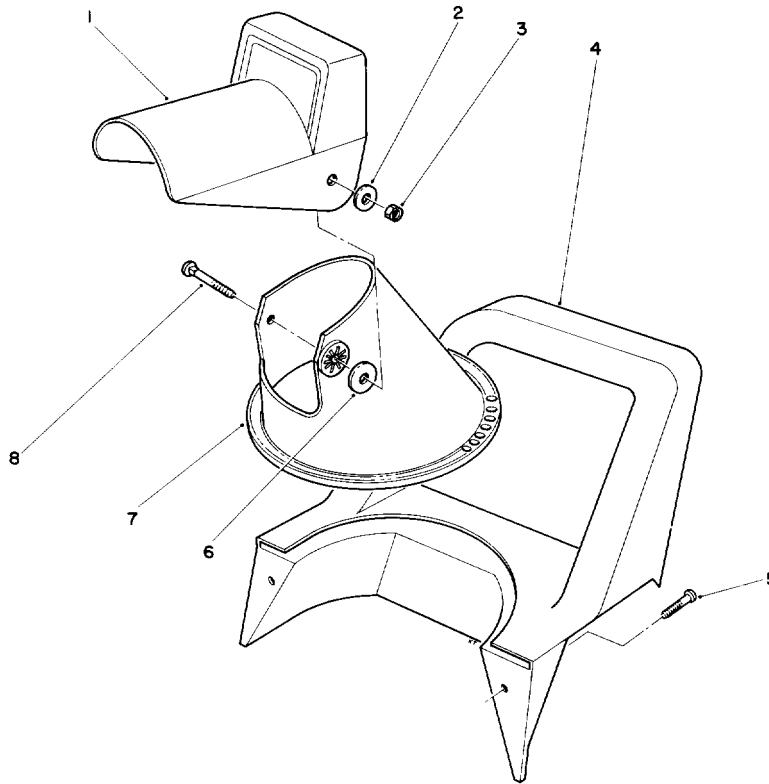


C-0456

HANDLE ASSEMBLY

| Ref. No. | Part No. | Description | No. Used |
|----------|-----------|------------------------|----------|
| 1 | 73-3510 | Bar - Switch | 1 |
| 2 | 64-4930 | Switch | 1 |
| 3 | 73-5700 | Handle - Upper Control | 1 |
| 4 | 73-5190 | Key | 1 |
| 5 | 73-5710 | Handle - Lower Control | 1 |
| 6 | 73-5690 | Tab - Lock | 1 |
| 7 | 32104-121 | Screw - Pan Hd. Form. | 11 |
| 8 | 73-5640 | Cord - Supply | 1 |
| 9 | 73-3460 | Tube - Upper Handle | 10 |
| 10 | 32112-1 | Push Nut | 1 |

| Ref. No. | Part No. | Description | No. Used |
|----------|----------|------------------------|----------|
| 11 | 73-0251 | Sleeve - Chute Crank | 1 |
| 12 | 33-8951 | Screw - Hex. Hd. Mach. | 2 |
| 13 | 3296-12 | Nut - Lock | 2 |
| 14 | 73-0490 | Decal - Escutcheon | 1 |
| 15 | 73-0240 | Rod - Chute Crank | 1 |
| 16 | 73-0230 | Gear - Chute Crank | 1 |
| 17 | 73-0310 | Plate - Escutcheon | 1 |
| 18 | 256-306 | Bushing - Snap In | 1 |
| 20 | 73-3450 | Spring | 2 |
| 21 | 73-3710 | Brake - Gear | 1 |



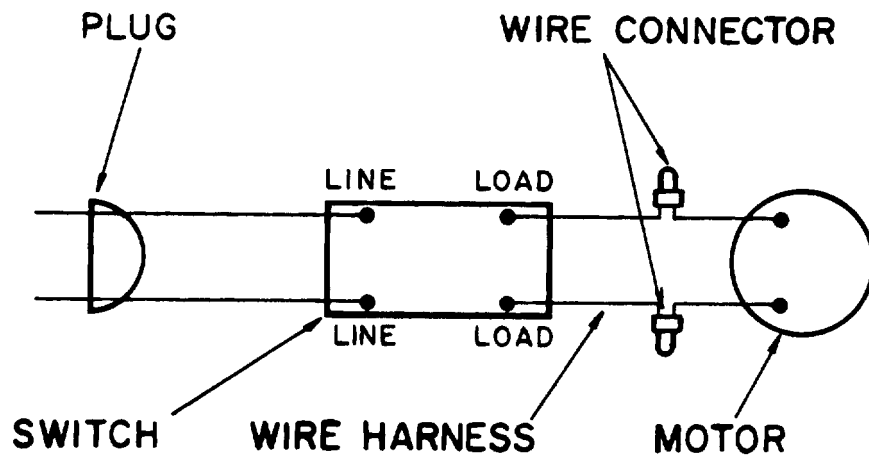
C-0457

CHUTE ASSEMBLY

| Ref. No. | Part No. | Description | No. Used |
|----------|-----------|-----------------------|----------|
| 1 | 73-0190 | Chute - Deflector | 1 |
| 2 | 3256-68 | Washer - Flat | 2 |
| 3 | 3296-29 | Nut - Lock | 2 |
| 4 | 73-0260 | Handle - Middle | 1 |
| 5 | 32104-121 | Screw - Pan Hd. Form. | 4 |
| 6 | 20-4320 | Washer - Rubber | 2 |
| 7 | 73-0180 | Chute - Lower | 1 |

| Ref. No. | Part No. | Description | No. Used |
|----------|----------|---|----------|
| 8 | 3230-2 | Bolt - Carriage | 2 |
| * | 73-0520 | Loose Parts (Incl. Ref.#2, 3, 6, & 8, Page 4) (Incl. Ref. #12, & 13 Page 3) | 1 |

*Not Illustrated



C-1721

ELECTRICAL ASSEMBLY

| Ref. No. | Part No. | Description | No. Used |
|----------|----------|-------------|----------|
| | | | |

| Ref. No. | Part No. | Description | No. Used |
|----------|----------|-------------|----------|
| | | | |

TORO PART NUMBER INDEX

| Part No. | Description | Pg. Ref. No. No. Qty. | Part No. | Description | Pg. Ref. No. No. Qty. |
|----------|------------------------|--------------------------|-----------|-------------------------|--------------------------|
| 20-4320 | Washer - Rubber | 4 6 2 | 73-3600 | Bracket - Idler | 1 38 1 |
| 25-5641 | Washer | 1 37 1 | 73-3630 | Wire Harness | 1 15 1 |
| 27-0411 | Screw - Shoulder | 1 34 1 | 73-3640 | Housing - Rotor | 2 44 1 |
| 33-8951 | Screw - Hex. Hd. Mach. | 3 12 2 | 73-3650 | Clamp - Motor Bracket | 2 42 2 |
| 61-8801 | Belt - Drive | 2 31 1 | 73-3660 | Pulley - Driver | 1 24 1 |
| 61-8780 | Bearing - Ball | 2 52 2 | 73-3680 | Spring | 2 39 1 |
| 64-4930 | Switch | 3 2 1 | 73-3690 | Scraper | 2 48 1 |
| 64-5820 | Relief - Strain | 1 8 1 | 73-3710 | Brake - Gear | 3 21 1 |
| 73-0020 | Shaft - Rotor | 2 53 1 | 73-3810 | Pulley Assembly - Idler | 1 28 1 |
| 73-0041 | Washer - Thrust | 1 29 2 | 73-5190 | Key | 3 4 1 |
| 73-0120 | Strap - Motor | 1 19 1 | 73-5640 | Cord - Supply | 3 8 1 |
| 73-0160 | Belt - Timing | 1 25 1 | 73-5690 | Tab - Lock | 3 6 1 |
| 73-0180 | Chute - Lower | 4 7 1 | 73-5700 | Handle - Upper Control | 3 3 1 |
| 73-0190 | Chute - Deflector | 4 1 1 | 73-5710 | Handle - Lower Control | 3 5 1 |
| 73-0220 | Plate - Side | 1 1 2 | 73-5720 | Wheel | 1 4 2 |
| 73-0230 | Gear - Chute Crank | 3 16 1 | 73-5730 | Bearing Assembly | 1 33 1 |
| 73-0240 | Rod - Chute Crank | 3 15 1 | 73-8580 | Bushing | 2 49 1 |
| 73-0250 | Sleeve - Axle | 1 6 1 | 73-8590 | Rotor | 2 47 1 |
| 73-0251 | Sleeve - Chute Crank | 3 11 1 | 73-8680 | Motor Plate Assembly | 1 21 1 |
| 73-0260 | Handle - Middle | 4 4 1 | 218-511 | Connector | 1 11 2 |
| 73-0280 | Tube - Lower Handle | 1 14 1 | 249-42 | U-Clip - Tinnerman | 1 5 4 |
| 73-0302 | Shroud - Housing | 1 12 1 | 252-102 | Bearing - Needle | 1 27 2 |
| 73-0310 | Plate - Escutcheon | 3 17 1 | 256-306 | Bushing - Snap In | 3 18 1 |
| 73-0370 | Shaft - Axle | 1 7 1 | 256-307 | Bushing | 1 13 1 |
| 73-0450 | Decal - Danger | 1 9 1 | 3230-2 | Bolt - Carriage | 4 8 2 |
| 73-0490 | Decal - Escutcheon | 3 14 1 | 3256-68 | Washer - Flat | 4 2 2 |
| 73-0520 | Loose Parts | 4 * 1 | 3290-271 | Rivet - Pop | 2 51 2 |
| 73-0860 | Coupler - Rotor | 2 46 1 | 3296-12 | Nut - Lock | 3 13 2 |
| 73-0990 | Shaft - Rotor Driver | 2 45 1 | 3296-29 | Nut - Lock | 4 3 2 |
| 73-1570 | Skid - Housing | 2 54 2 | 3296-47 | Nut - Lock | 2 40 1 |
| 73-1800 | Filter - Foam | 1 17 1 | 32104-97 | Screw - Hex. Hd. | 2 43 2 |
| 73-1900 | Bracket - Wheel | 2 50 2 | 32104-121 | Screw - Pan Hd. | 1 2 23 |
| 73-3450 | Spring | 3 20 2 | 32104-121 | Screw - Pan Hd. Form. | 4 5 4 |
| 73-3460 | Tube - Upper Handle | 3 9 10 | 32104-121 | Screw - Pan Hd. Form. | 3 7 11 |
| 73-3510 | Bar - Switch | 3 1 1 | 32112-1 | Push Nut | 1 3 2 |
| 73-3520 | Motor | 1 20 1 | 32112-1 | Push Nut | 3 10 1 |
| 73-3530 | Bolt - Idler | 1 30 1 | 32144-88 | Screw - Pan Hd. | 1 18 4 |
| 73-3550 | Pulley - Driven | 2 41 1 | 32144-100 | Screw - Hex. Washer Hd. | 1 23 2 |
| 73-3580 | Washer | 1 26 1 | 32144-108 | Screw - Pan Hd. | 2 55 2 |

