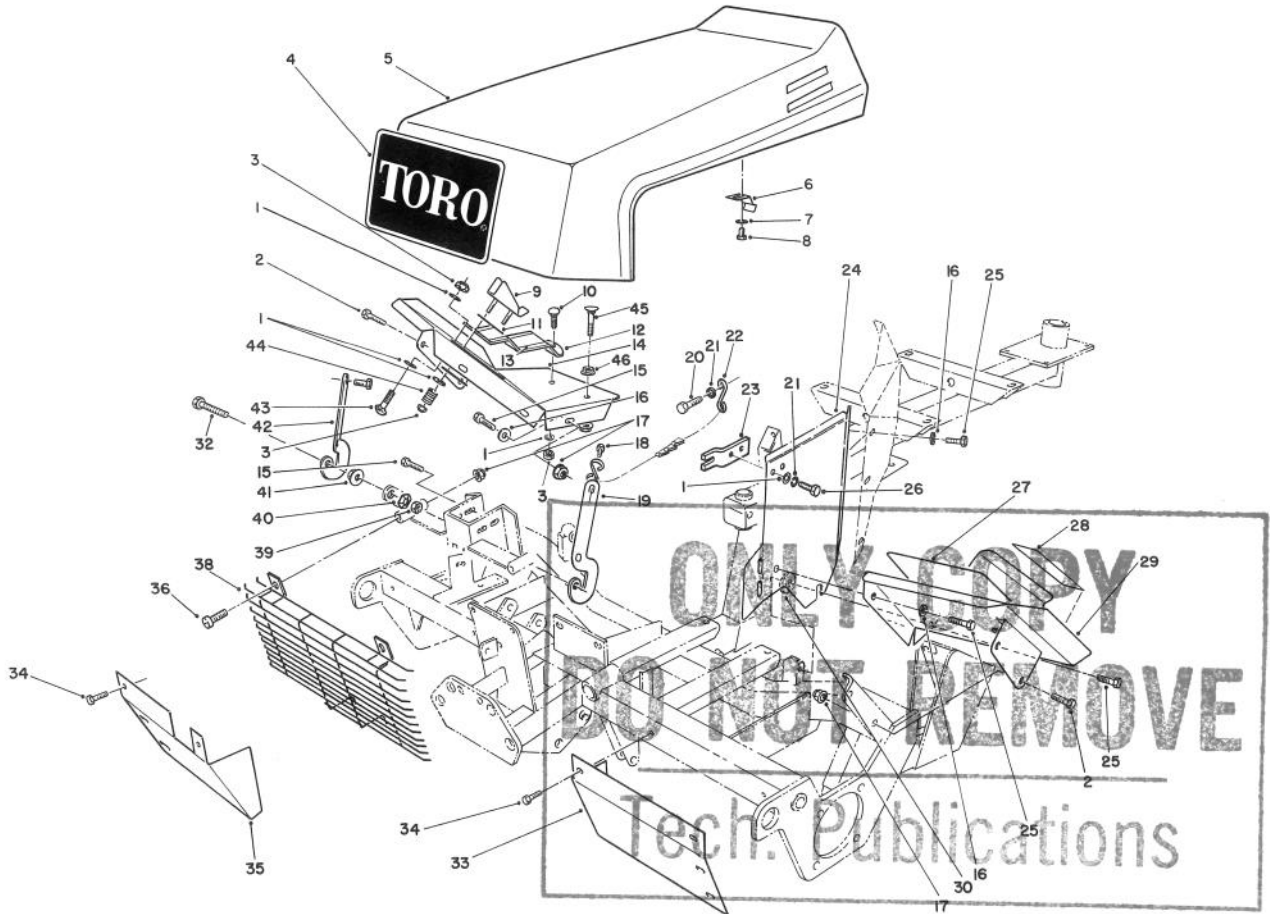


MODEL NO. 03430-40001 & UP

PARTS CATALOG

REELMASTER® 216G - 3WD
Traction Unit



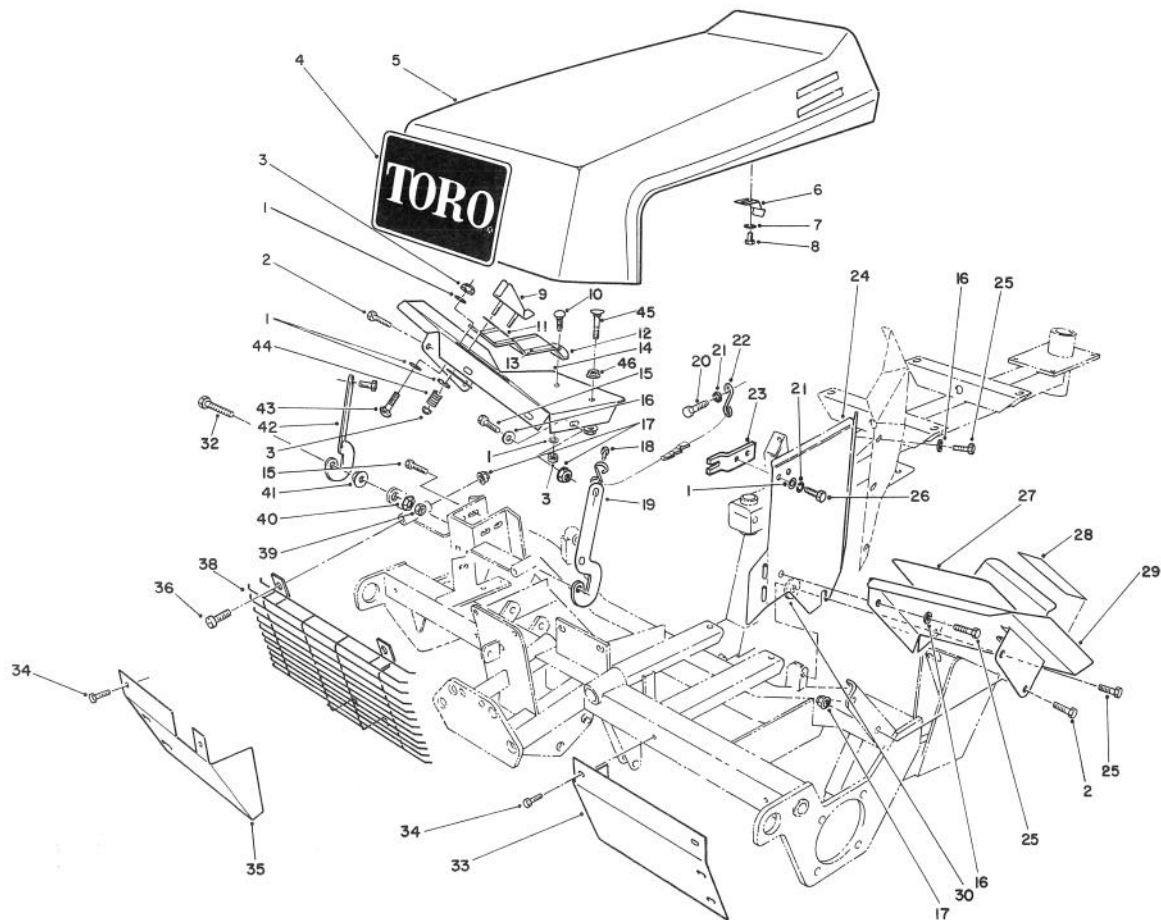
T-0881

HOOD ASSEMBLY

Ref. No.	Part No.	Description	No. Used
1	3256-22	Washer - Flat	8
2	3234-17	Screw - Cap Hex. Hd.	10
3	3296-16	Nut - Lock	5
4	62-7400	Decal - Toro Logo	1
5	62-5400	Hood Assembly	1
6	75-9310	Latch - Hood	1
7	3256-21	Washer - Flat	2
8	32104-77	Screw - Hex. Hd. Self-Tap	2
9	62-7320	Stop - Traction Pedal	1
10	3229-1	Bolt - Carriage	2
11	62-7350	Slide - Pedal Stop	2
12	76-2200	Footrest - Traction	1
13	76-2260	Pad - Footrest	1
14	80-4240	Footrest R.H.	1
15	3234-17	Screw - Cap Hex. Hd.	6
16	3256-23	Washer - Flat	1

Ref. No.	Part No.	Description	No. Used
17	32128-25	Nut - Flange Lock	6
18	32144-22	Screw - Hex. Hd. Self-Tap	4
19	28-0120	Bracket - Hinge L.H.	1
20	321-5	Screw - Cap Hex. Hd.	1
21	3253-3	Washer - Lock	3
22	76-0130	Hood Stop Chain Assembly	1
23	72-9540	Bracket - Heat Shield	1
24	72-4150	Shield - Heat	1
25	322-3	Screw - Cap Hex. Hd.	31
26	321-2	Screw	2
27	66-6120	Pad - Foot	1
28	84-1650	Decal - Brake	1
29	72-4360	Footrest - L.H.	1
30	62-7190	Spacer	1
32	57-3210	Screw - Hex. Washer Hd.	2
33	83-9800	Shield - Front Grass L.H.	1

TPS

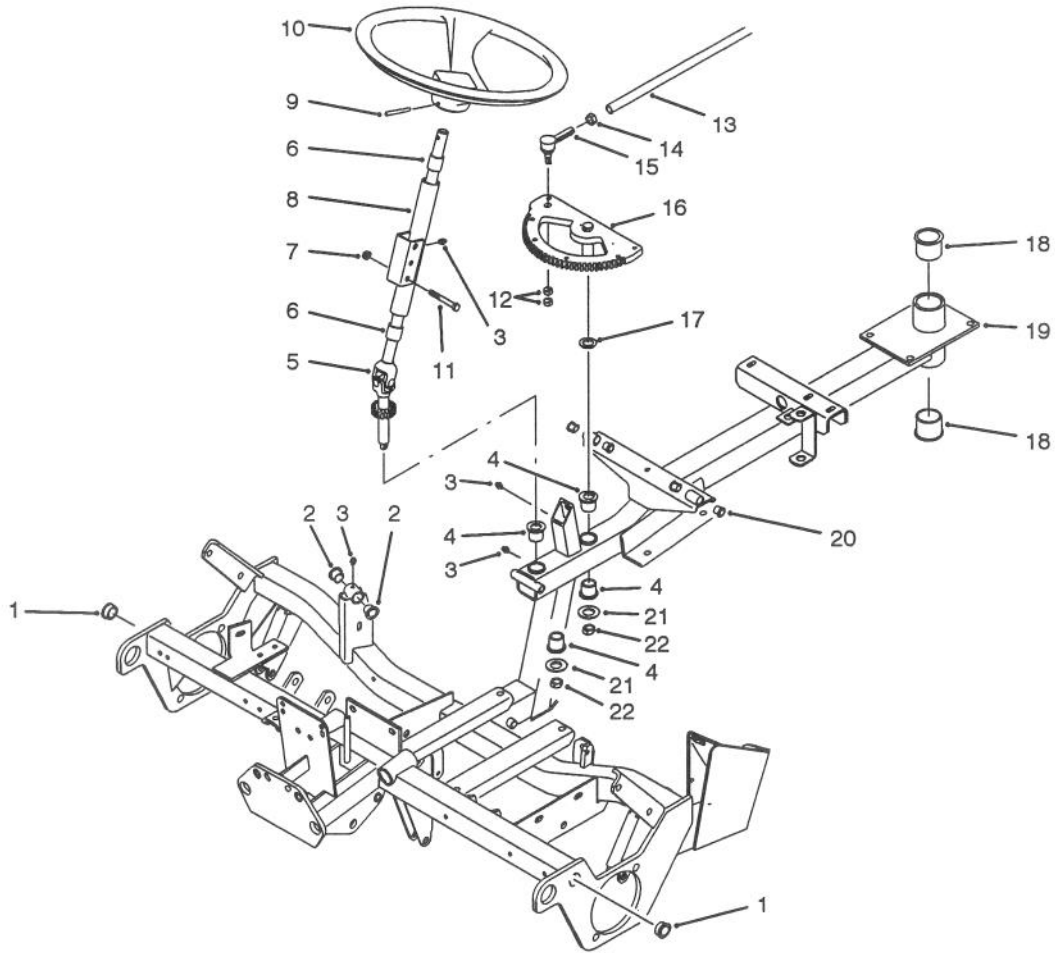


T-0881

HOOD ASSEMBLY (Continued)

Ref. No.	Part No.	Description	No. Used
34	32104-82	Screw - Hex. Hd. Self-Tap	4
35	83-8860	Shield - Front R.H.	1
36	3250-50	Screw - Pan Hd.	2
38	66-5340	Grille - Front	1
39	3217-7	Nut - Hex.	2
40	3290-224	Washer - Lock Pyramidal	2

Ref. No.	Part No.	Description	No. Used
41	92-1841	Nut - Hood Pivot	2
42	28-0130	Bracket - Hinge R.H.	1
43	3229-22	Bolt - Carriage	1
44	10-4850	Spring - Compression	2
45	77-0480	Screw - Traction Stop	1
46	32128-20	Nut - Flange	2

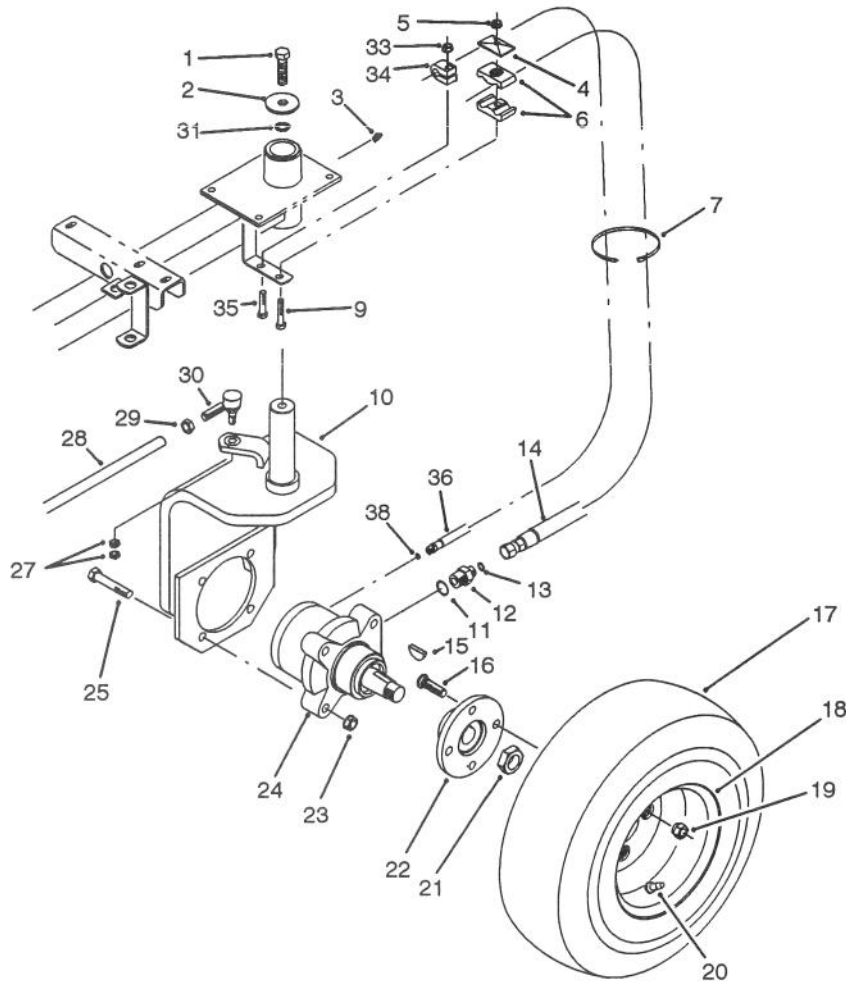


T-1415

FRAME ASSEMBLY

Ref. No.	Part No.	Description	No. Used
1	256-247	Bushing - Flange	2
2	256-287	Bushing - Flange	2
3	302-5	Fitting - Grease	4
4	92-3162	Bushing - Flange	4
5	92-3165	Steering Shaft & Gear	1
6	256-27	Bushing - Sleeve	2
7	3296-29	Nut - Flange Lock	1
8	61-2090	Steering Column Assembly (Incl. Ref. #6)	1
9	32121-10	Pin - Roll	1
10	76-1420	Wheel - Steering	1
11	322-12	Screw - Cap Hex. Hd.	1
12	3220-3	Nut - Jam	2

Ref. No.	Part No.	Description	No. Used
13	61-2070	Rod - Steering	1
14	3220-5	Nut - Jam	1
15	21-0141	Rod End Assembly (Incl. Ref. #12)	1
16	92-3172	Rack - Steering	1
17	3-6498	Washer - Thrust	A/R
18	256-245	Bushing - Flange	2
19	92-1820	Frame Assembly (Incl. Ref. #1, 2, 4, 19 & 20)	1
20	256-321	Bushing - Flange	4
21	3256-26	Washer - Flat	2
22	3296-28	Nut - Lock	2

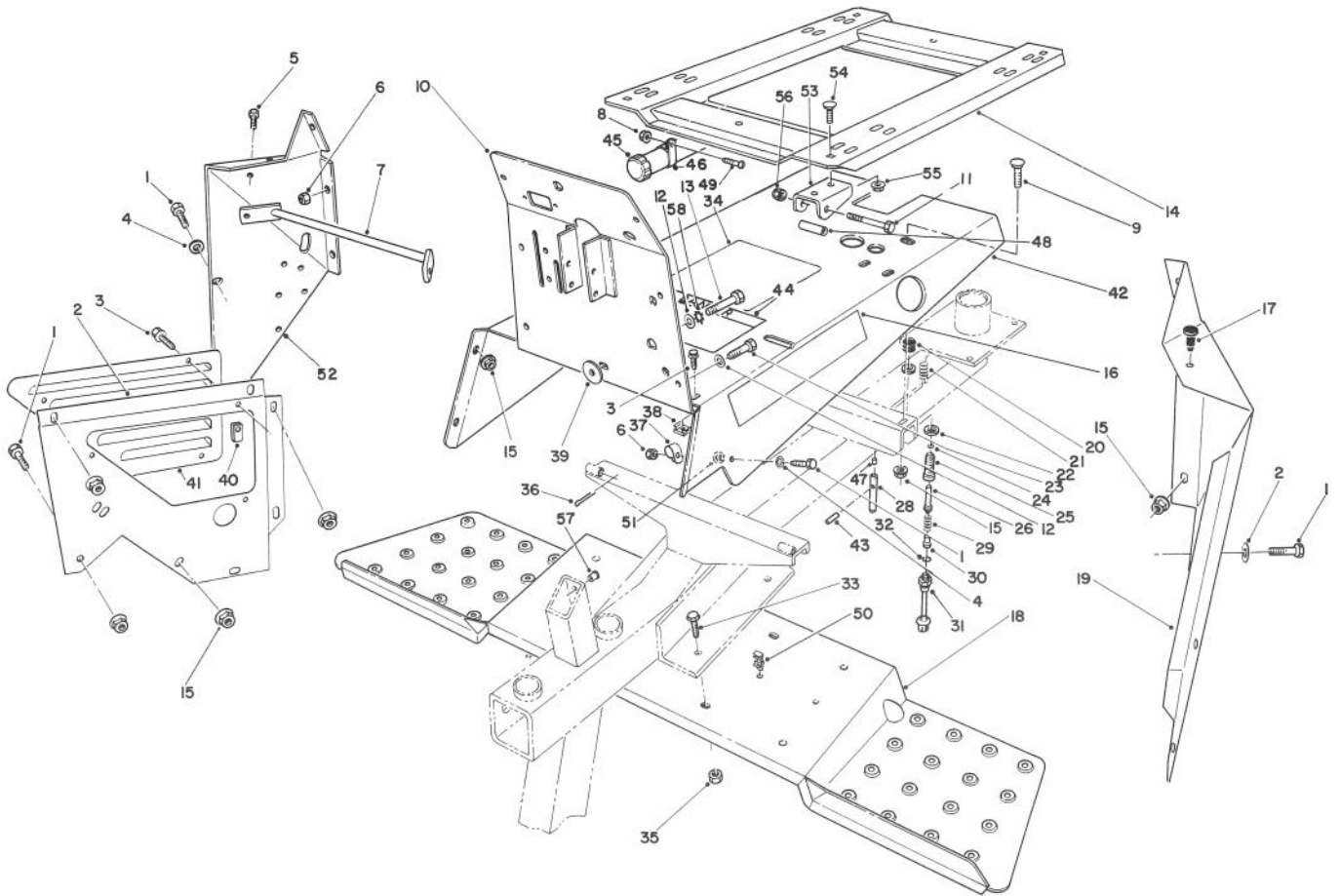


T-1428

REAR WHEEL ASSEMBLY

Ref. No.	Part No.	Description	No. Used
1	325-6	Screw - Cap Hex. Hd.	1
2	75-7730	Spacer	1
3	302-5	Fitting - Grease	1
4	69-9760	Plate - Cover	1
5	3296-29	Nut - Lock	1
6	56-7976	Clamp - Hose	2
7	3290-378	Tie - Cable	1
9	322-9	Screw - Cap Hex. Hd.	1
10	83-7270	Fork - Caster	1
11	237-80	Seal - O-Ring	2
12	340-141	Fitting - Hydraulic Straight (Incl. Ref. #11 & 13)	2
13	237-22	Seal - O-Ring	2
14	80-4090	Hose - Hydraulic	2
15	65-4640	Key - Woodruff	1
16	85-6540	Stud - Drive	4
17	231-127	Tire	1
18	242-76	Rim	1
19	242-50	Nut - Lug	4

Ref. No.	Part No.	Description	No. Used
20	232-47	Tube - Inner	1
21	26-3790	Nut - Lock	1
22	10-6870	Hub - Wheel	1
23	3296-23	Nut - Flange Lock	4
24	66-5291	Hydraulic Motor Assembly (Incl. Ref. #15)	1
25	325-11	Screw - Cap Hex. Hd.	4
27	3220-3	Nut - Jam	2
28	61-2070	Rod - Steering	1
29	3220-12	Nut - Jam	1
30	21-0151	Rod End Assembly (Incl. Ref. #27)	1
31	3255-2	Washer - Lock	1
33	3296-42	Nut - Lock	1
34	2412-114	Clamp	1
35	321-8	Screw - Cap Hex. Hd.	1
36	80-4080	Hydraulic Hose Assembly (Incl. Ref. #38)	1
38	237-78	Seal - O-Ring	1

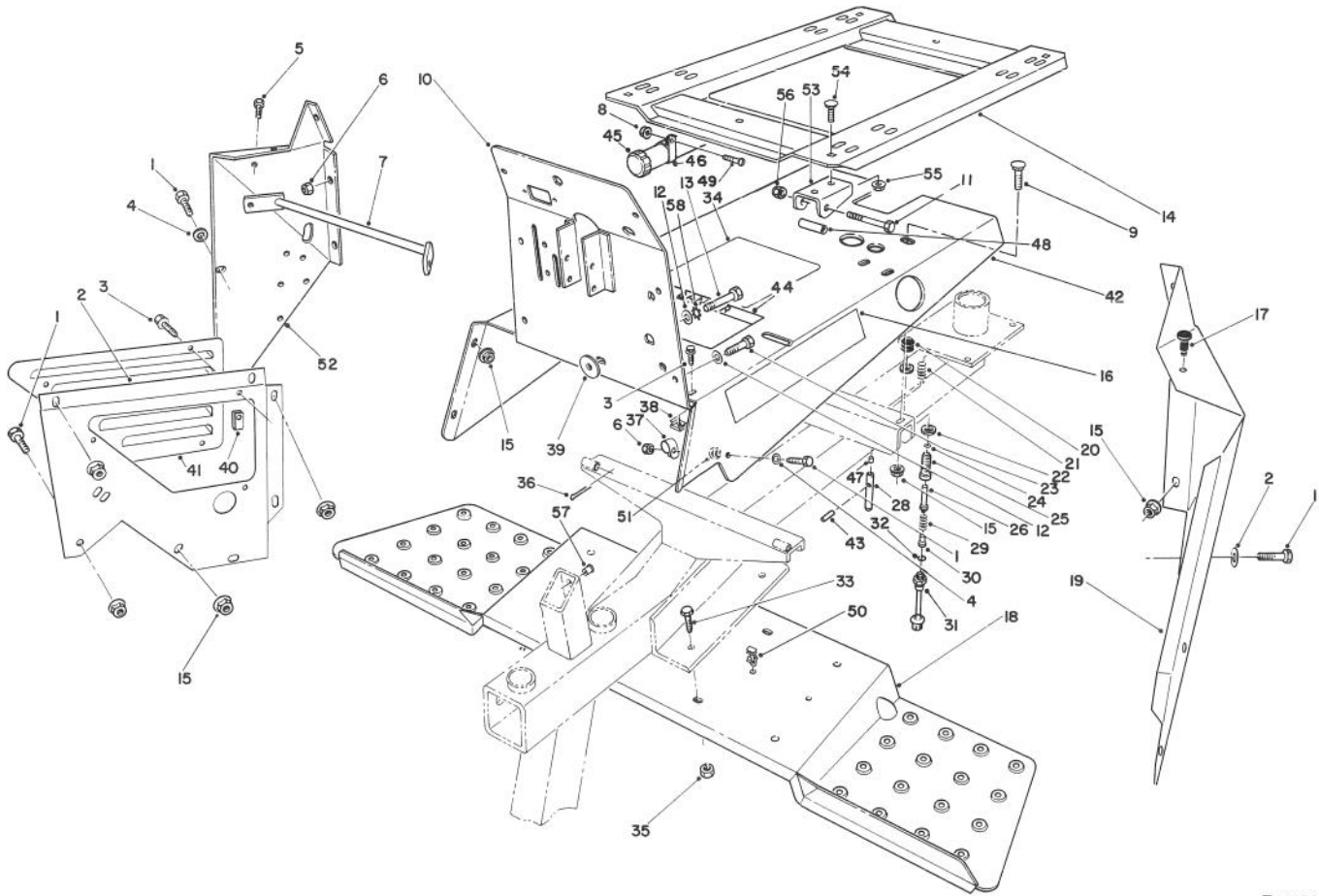


T-1066

SEAT SUPPORT ASSEMBLY

Ref. No.	Part No.	Description	No. Used
1	322-3	Screw - Hex. Hd. Cap	9
2	75-9260	Support - Hydraulic Tank	1
3	3234-13	Screw - Hex. Flange Hd.	6
4	3256-23	Washer - Flat	9
5	3234-14	Screw - Hex. Hd. Cap	2
6	3296-29	Nut - Lock	2
7	62-5330	Bracket - Side Panel	1
8	32128-44	Nut - Flange	2
9	3230-15	Bolt - Carriage	2
10	92-3189	Panel - Instrument	1
11	321-11	Screw - Cap Hex. Hd.	2
12	3256-70	Washer - Flat	7
13	322-45	Screw - Hex. Hd. Cap	1
14	85-5330	Plate - Seat	1
15	32128-25	Nut - Flange Lock	17
16	61-3840	Decal - Reelmaster 216	2
17	237-37	Bumper - Rubber	2
18	83-9730	Step - Foot	1
19	72-4350	Panel - Access L.H.	1
20	43-8870	Boot - Switch	1
21	37-9590	Spring	1
22	218-461	Nut - Jam	2
23	322-43	Screw - Cap Hex. Hd.	1
24	237-7	Seal - O-Ring	1
25	43-8620	Guide - Switch Pin	1
26	43-8860	Plunger - Switch	1

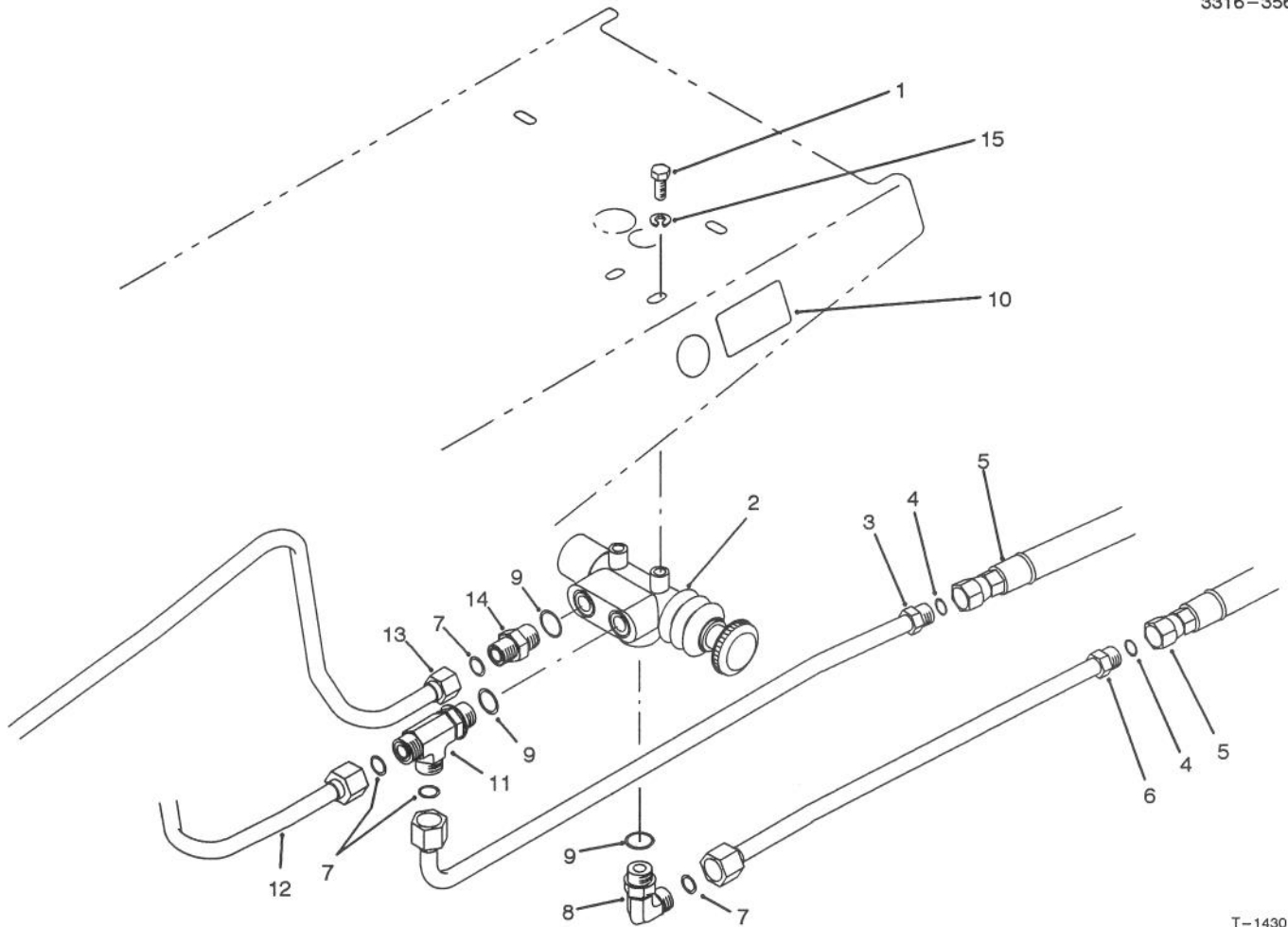
Ref. No.	Part No.	Description	No. Used
27	3234-17	Screw - Hex. Flange Hd.	2
28	27-9870	Pin - Seat Spring	1
29	43-8600	Spring - Compression	1
30	43-8610	Guide - Spring & Ball Seat	1
31	72-4320	Switch - Neutral	1
32	237-30	Seal - O-Ring	1
33	3255-8	Screw - Hex. Flange Hd.	4
34	88-9550	Decal - Service Information	1
35	32128-43	Nut - Flange Lock	4
36	3272-4	Pin - Cotter	2
37	2412-71	Clamp - R	1
38	3290-196	Nut - Retainer	3
39	62-7170	Spacer	1
40	3290-199	Nut - Speed	3
41	76-0500	Cover - Reservoir Support	1
42	92-3180	Panel	1
43	32121-6	Pin - Roll	1
44	83-9550	Decal - Warning	1
45	74-0720	Tube - Manual	1
46	2412-133	Clamp - R	2
47	28-6180	Pin	1
48	85-5340	Tube - Pivot	2
49	32122-14	Screw - Truss Hd.	2
50	80-3940	Clip - Rosebud	1
51	237-88	Grommet	1
52	61-3880	Panel - Access R.H.	1



T-1066

SEAT SUPPORT ASSEMBLY (Continued)

Ref. No.	Part No.	Description	No. Used	Ref. No.	Part No.	Description	No. Used
53	85-5230	Bracket - Seat Pivot	2	56	3296-42	Nut - Lock	2
54	3229-22	Bolt - Carriage	2	57	32148-8	Insert - Threaded	1
55	32128-33	Nut - Flange Lock	2	58	3255-8	Washer - Lock E.T.L.W.	1

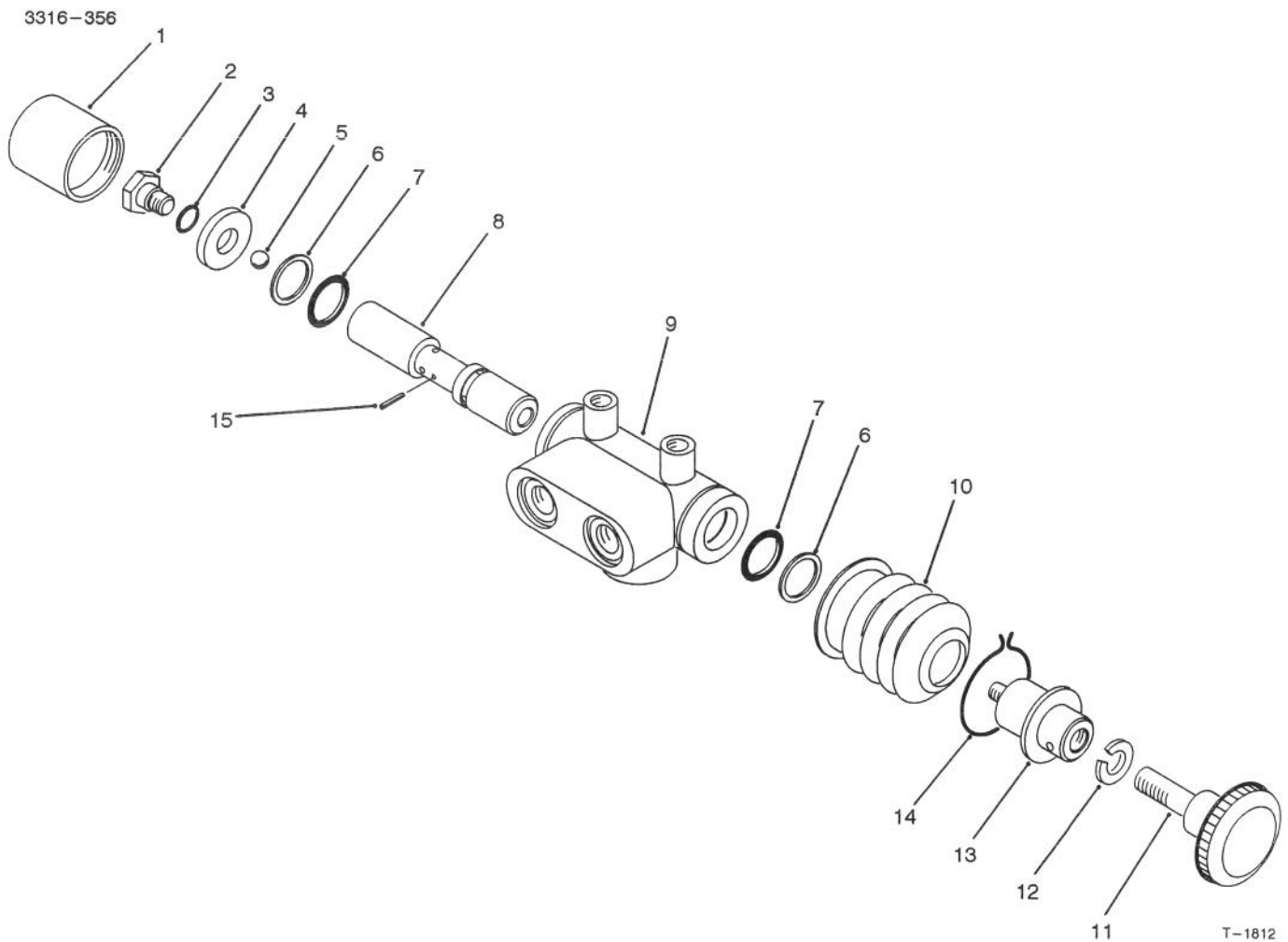


T-1430

REAR WHEEL DRIVE VALVE ASSEMBLY

Ref. No.	Part No.	Description	No. Used
1	322-1	Screw - Cap Hex. Hd.	2
2	92-3196	2 Position Valve Assembly	1
3	71-0710	Hydraulic Tube Assembly (Incl. Ref. #4)	1
4	237-22	Seal - O-Ring	2
5	80-4090	Hose - Hydraulic	2
6	71-0840	Hydraulic Tube Assembly (Incl. Ref. #4)	1
7	237-30	Seal - O-Ring	4
8	340-98	Fitting - Hydraulic 90°	

Ref. No.	Part No.	Description	No. Used
		(Incl. Ref. #7 & 9)	1
9	237-79	Seal - O-Ring	3
10	92-3179	Decal - Control	1
11	340-109	Fitting - Hydraulic Tee (Incl. Ref. #7 & 9)	1
12	83-9500	Tube - Hydraulic	1
13	83-9460	Tube - Hydraulic	1
14	3253-4	Washer - Lock	2
15	340-4	Fitting - Hydraulic Straight (Incl. Ref. #7 & 9)	1

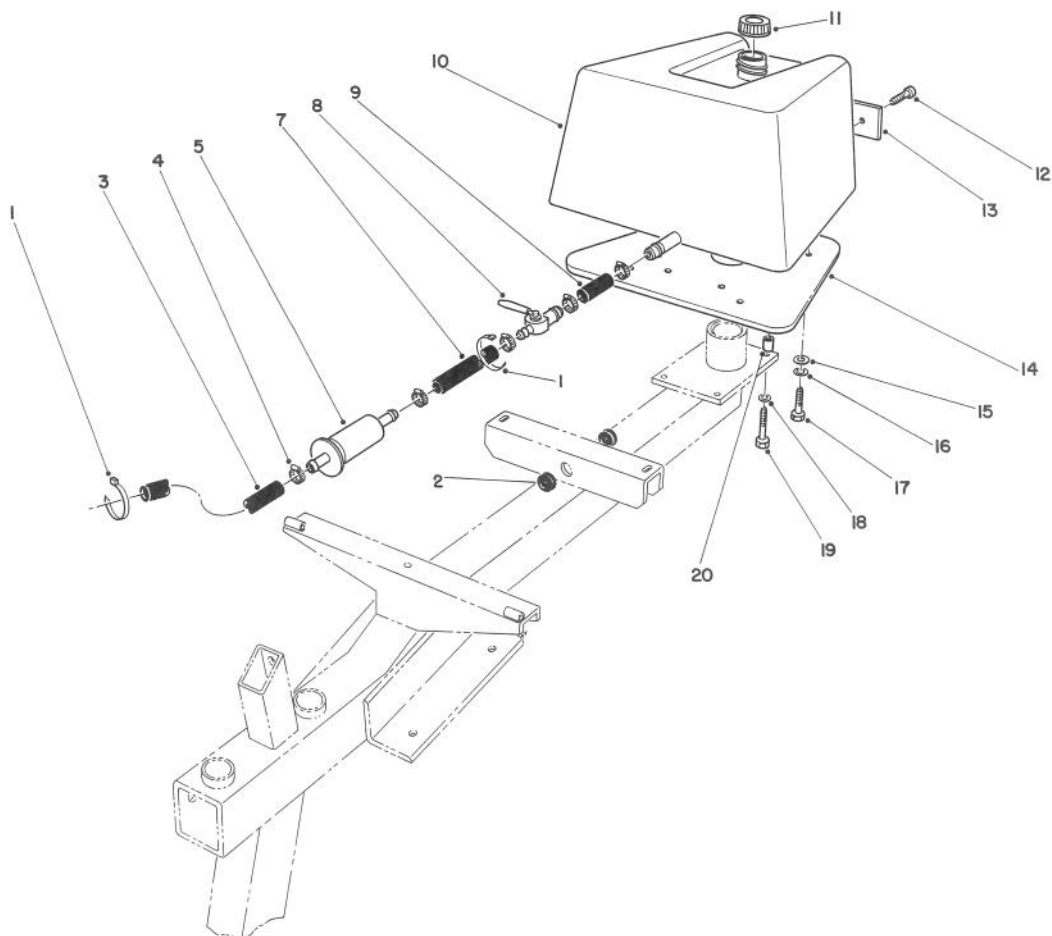


TWO POSITION VALVE ASSEMBLY NO. 92-3196

Ref. No.	Part No.	Description	No. Used
1	92-7904	Cap - Valve	1
2	92-7907	Plug Assembly (Incl. Ref. #3)	1
3	237-22	Seal - O-Ring	1
4	92-7908	Washer - Valve	1
5	354-23	Ball	1
6		Ring - Back-Up	2
7		Seal - O-Ring	2
8		Spool - Valve	1
9		Housing - Valve	1

Ref. No.	Part No.	Description	No. Used
10	92-7911	Boot	1
11	233-46	Knob	1
12	3253-5	Washer - Lock	1
13	92-7909	Stop - Valve	1
14	92-7912	Retainer - Boot	1
15	32121-38	Pin - Spring	1
*	92-7913	Seal Repair Kit (Incl. Ref. #1, 3, 6, 7, 10 & 14)	1

*Not Illustrated



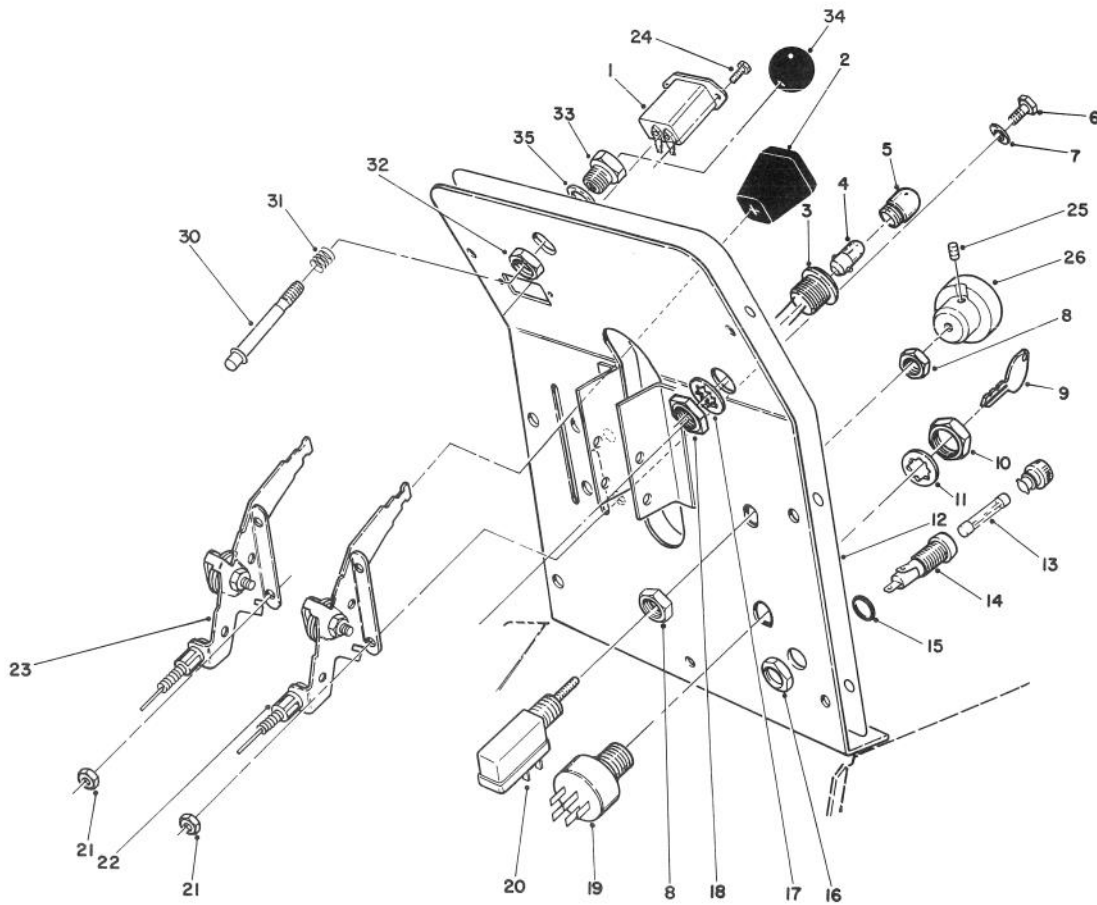
T-1067

FUEL TANK ASSEMBLY

Ref. No.	Part No.	Description	No. Used	Ref. No.	Part No.	Description	No. Used
1	3290-379	Tie - Cable	2	13	61-3310	Plate - Toro Logo	1
2	237-125	Grommet	2	14	61-2680	Weight - Standard	1
3	47-2980	Hose - Fuel	1		62-5140	Weight - 8 Blade (Optional)	1
4	2412-36	Clamp - Hose	6	15	3256-23	Washer - Flat	4
5	38-8000	Filter - Fuel	1	16	3253-4	Washer - Lock	4
7	47-2988	Hose - Fuel	1	17	322-3	Capscrew - Hex. Hd.	4
8	61-3550	Valve - Ball	1	18	3253-21	Washer - Lock	4
9	56-2230	Hose - Fuel	1	19	323-9	Capscrew - Hex. Hd.	4
10	61-0030	Tank - Fuel	1	†20	61-2220	Spacer	4
11	55-3570	Cap - Fuel	1				
12	3290-470	Screw - Machine	2				

*Not Illustrated

†Use with 5 blade cutting units only.



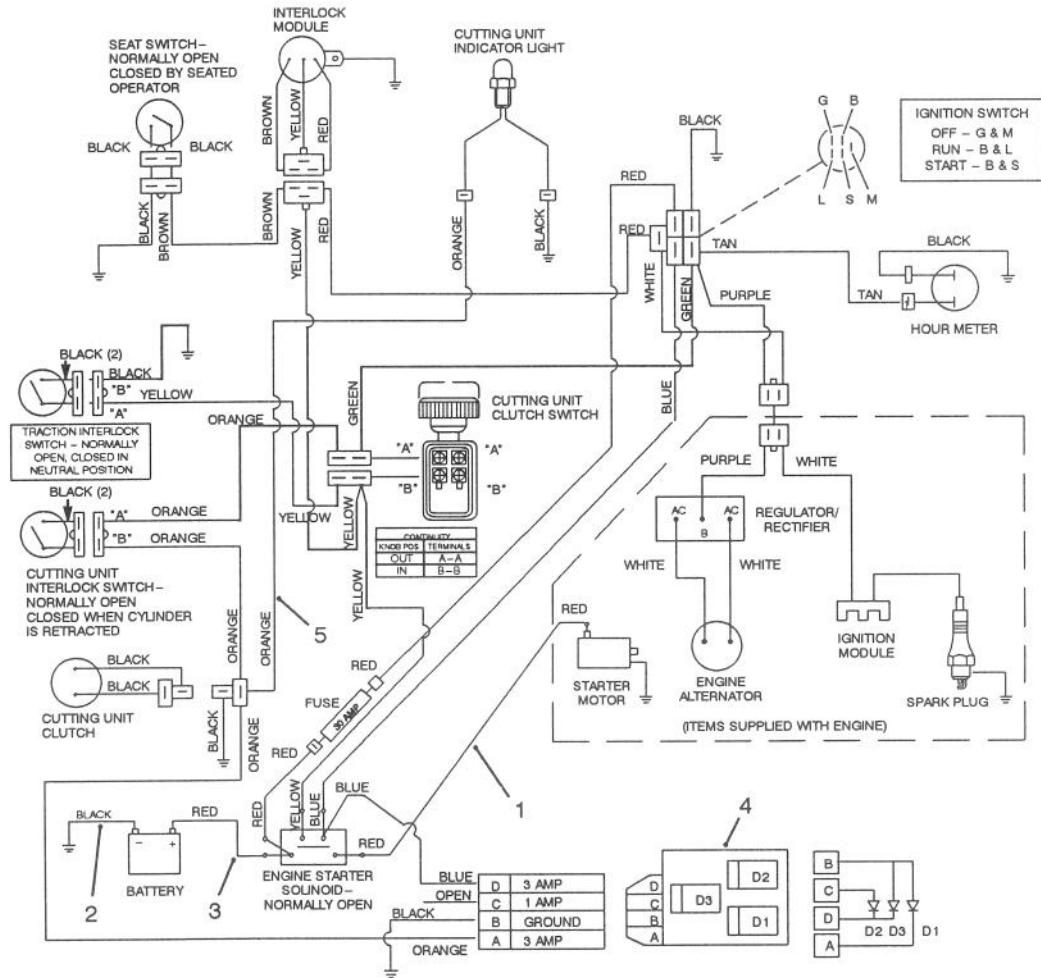
T-0264

INSTRUMENT PANEL ASSEMBLY

Ref. No.	Part No.	Description	No. Used
1	75-6820	Meter - Hour	1
2	66-0120	Knob	2
3	44-2212	Lamp - Pilot (Incl. Ref. #4, 5 & 17-18)	1
†4	219-18	Bulb - Light (GE #1893)	1
5	218-562	Lens	1
6	321-39	Screw - Cap Hex. Hd.	4
7	3256-1	Washer - Flat	4
8	3218-19	Nut - Hex.	2
9	63-8360	Key	1
10	218-461	Nut	1
11	3254-5	Washer - Lock	1
12	92-3177	Decal - Instrument Panel	1
†13		Fuse - 30 Amp.	1
14	218-489	Fuse Holder Assembly (Incl. Ref. #15-16)	1
15		Seal - O-Ring	1
16		Nut - Hex.	1

Ref. No.	Part No.	Description	No. Used
17	218-536	Washer - Lock	1
18	218-535	Nut	1
19	23-0660	Switch - Key (Incl. Ref. #9-11)	1
20	92-3194	Switch - Clutch (Incl. Ref. #8, 25 & 26)	1
21	3296-42	Nut - Lock	4
22	80-4120	Control - Choke	1
23	80-4110	Control - Throttle	1
24	32144-18	Screw - Cap Hex. Hd.	2
25	3298-8	Screw - Set	1
26	92-3195	Knob	1
30	75-9330	Pin - Hood Latch	1
31	5-4723	Spring - Compression	1
32	3218-5	Nut - Hex. Jam	1
33	75-9320	Bushing - Hood Latch	1
34	233-17	Knob	1
35	3256-26	Washer - Flat	1

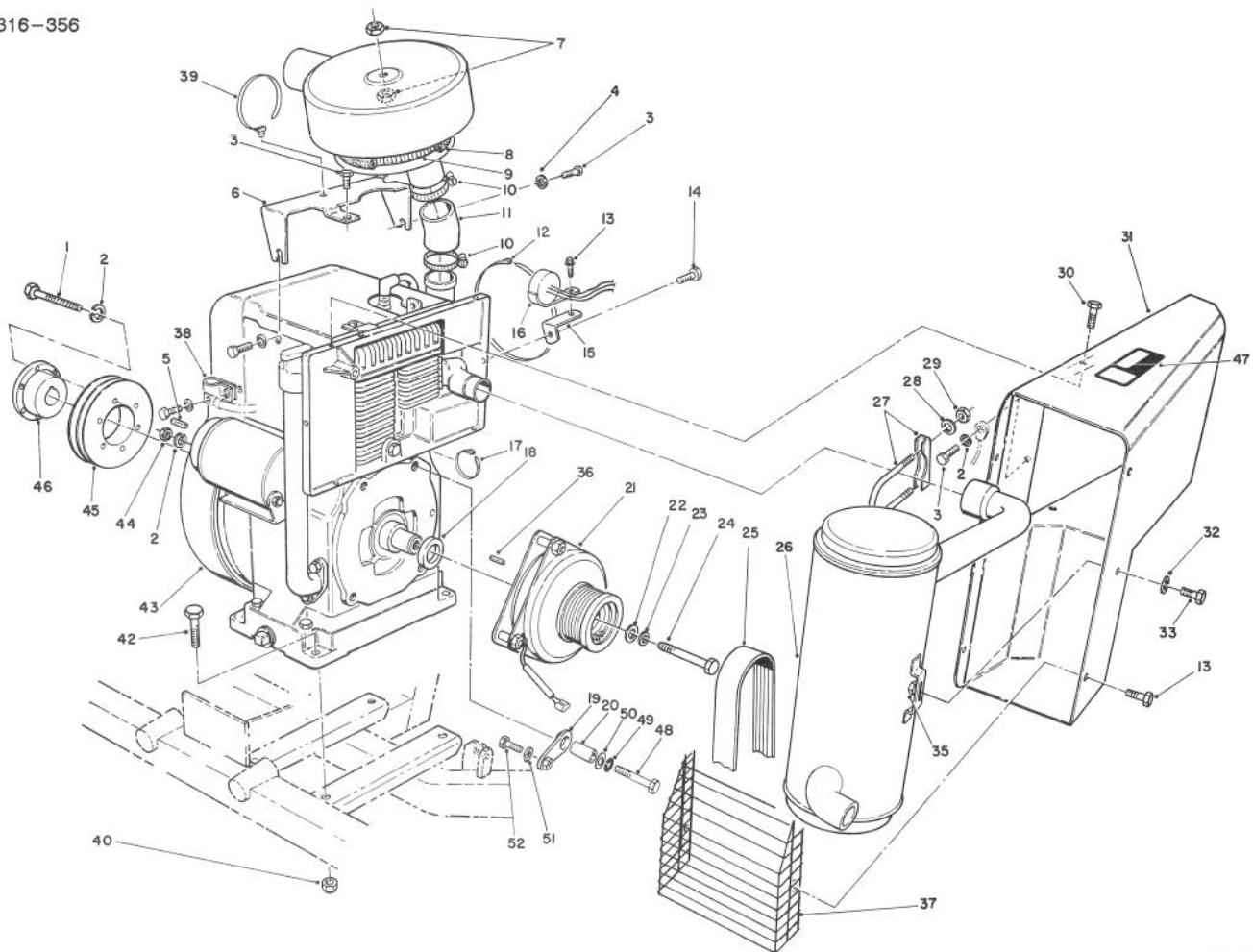
†Obtain Locally



T-1068

ELECTRICAL SCHEMATIC

Ref. No.	Part No.	Description	No. Used	Ref. No.	Part No.	Description	No. Used
1	61-2660	Wire - Solenoid/Starter	1	4	92-3191	Diode - Circuit Board	1
2	61-2670	Wire - Ground	1	5	92-7901	Wire Harness Assembly	1
3	10-7130	Wire - Battery/Solenoid	1				

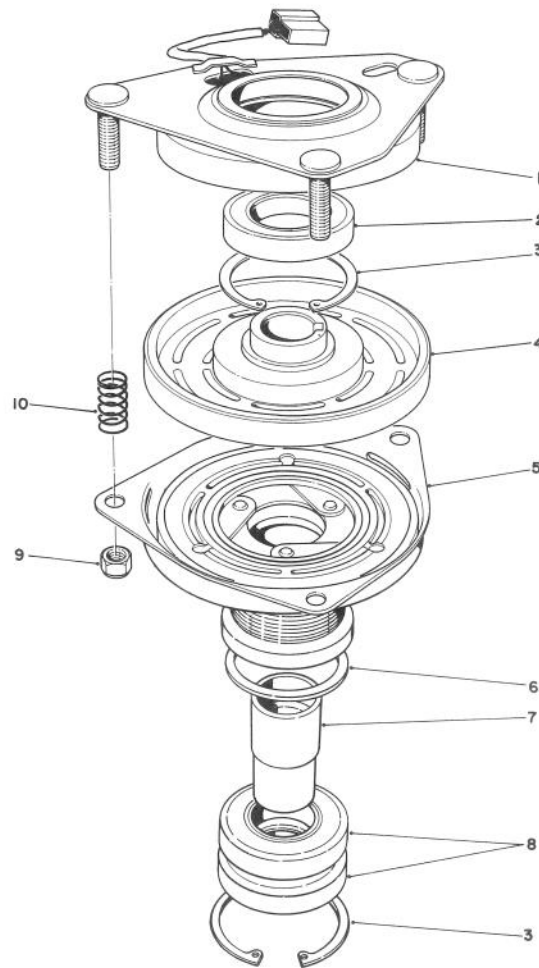


T-0266

ENGINE & CLUTCH ASSEMBLY

Ref. No.	Part No.	Description	No. Used
1	321-13	Screw - Cap Hex. Hd.	3
2	3253-3	Washer - Lock	3
3	3234-4	Screw - Cap Hex. Hd.	3
4	3255-7	Washer - Lock	1
5	10-7070	Key - Square	1
6	61-2120	Bracket - Air Cleaner	1
7	3296-56	Nut - Lock	2
8		Precleaner - Air Cleaner	1
9		Element - Air Cleaner	1
10	2412-92	Clamp - Hose	2
11	61-3470	Hose	1
12	3333-975	Tie - Cable	1
13	49-2040	Screw - Tapping	5
14	3234-4	Screw - Cap Hex. Hd.	1
15	76-0070	Bracket - Interlock Module	1
16	59-9810	Module - Ignition	1
17	3290-378	Tie - Cable	1
18	70-7080	Spacer - Clutch	1
19	92-1810	Arm - Torque	1
20	92-1813	Spacer - Torque Arm	1
21	70-8020	Clutch Assembly	1
22	70-8040	Washer - Flat	1
23	3253-27	Washer - Lock	1
24	3213-9	Capscrew - Hex. Hd.	1
25	61-3390	Belt - Poly-V	1
26	84-1850	Muffler	1

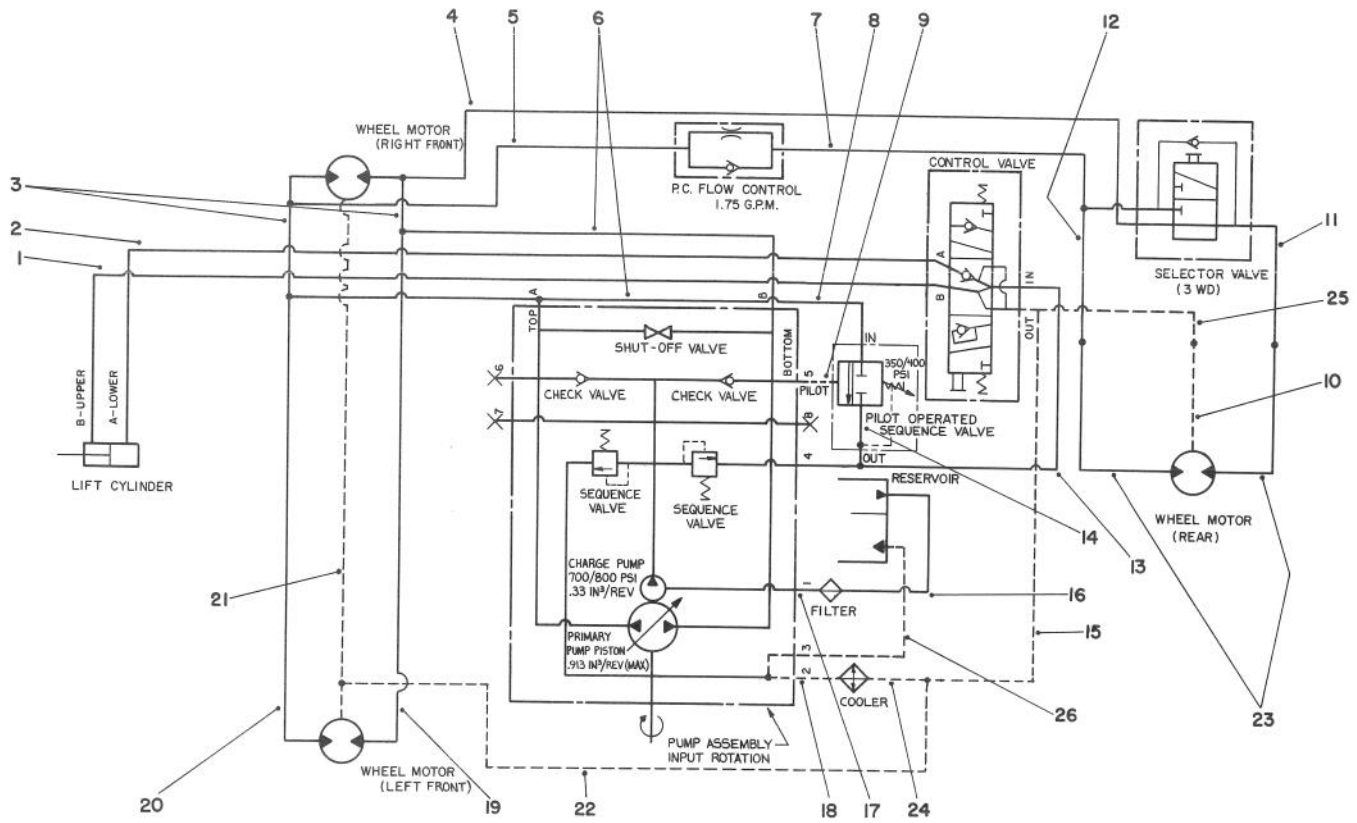
Ref. No.	Part No.	Description	No. Used
27	2112-9	Clamp - Muffler (Incl. Ref. #28-29)	1
28	3253-4	Washer - Lock	2
29	3217-6	Nut - Hex.	2
30	12-3270	Screw - Cap Hex. Hd.	4
31	61-0020	Shroud - Muffler	1
32	3256-70	Washer - Flat	2
33	322-46	Screw - Cap Hex. Hd.	2
35	32128-25	Nut - Lock	2
36	70-8030	Key	1
37	84-1840	Grille - Muffler	1
38	2412-41	Clamp - R	1
39	3290-410	Tie - Push Mount	1
40	3296-39	Nut - Lock	4
42	323-8	Screw - Cap Hex. Hd.	4
43		Engine - Kohler Model No. M16 Spec. No. 711563	1
44	3218-1	Nut - Hex.	1
45	92-1819	Pulley - Engine	1
46	61-3340	Bushing - Taper (Incl. Ref. #1-2)	1
47	66-6840	Decal - Hot	1
48	324-7	Screw - Cap Hex. Hd.	1
49	3253-6	Washer - Lock	1
50	3256-25	Washer - Flat	1
51	92-1814	Spacer - Torque Arm	1
52	322-3	Screw - Cap Hex. Hd.	1



T-0267

ELECTRIC CLUTCH ASSEMBLY NO. 70-8020

Ref. No.	Part No.	Description	No. Used	Ref. No.	Part No.	Description	No. Used
1	44-8350	Field Assembly (Incl. Ref. #2 & 3)	1	5	62-5250	Armature & Pulley Assembly (Incl. Ref. #3, 6, 7 & 8)	1
2	251-292	Bearing - Field	1	6	44-8330	Spacer - Pulley Bearing	1
3	44-8310	Ring - Retaining	2	7	76-0080	Collar - Bearing	1
4	44-8360	Field Coil, Rotor & Bearing Assembly (Incl. Ref. #1)	1	8	251-291	Bearing - Pulley	2
				9	3296-6	Nut - Lock	3
				10	44-8320	Spring - Compression	3

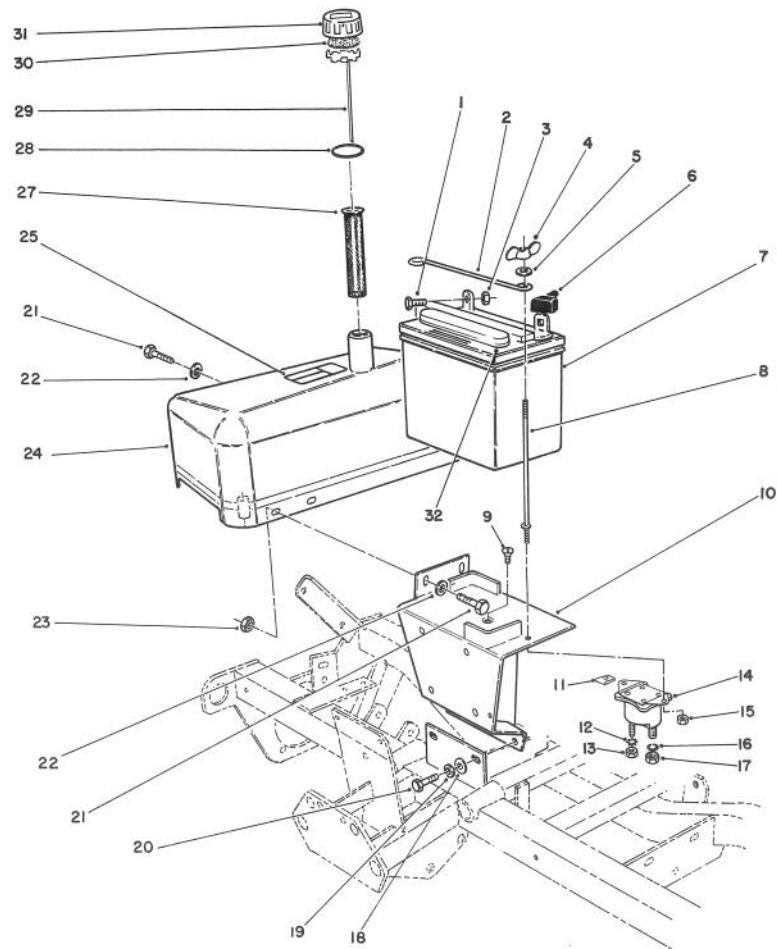


T-0891

HYDRAULIC SCHEMATIC

Ref. No.	Part No.	Description	No. Used
1	61-2500	Hose Assembly	1
2	61-2490	Hose Assembly	1
3	71-0870	Tube Assembly	2
4	71-0910	Tube Assembly	1
5	71-0880	Tube Assembly	1
6	76-2520	Hose Assembly	2
7	71-0850	Tube Assembly	1
8	76-2530	Hose Assembly	1
9	63-4890	Hose Assembly	1
10	80-4080	Tube Assembly	1
11	71-0840	Tube Assembly	1
12	71-0710	Tube Assembly	1
13	61-2520	Hose Assembly	1

Ref. No.	Part No.	Description	No. Used
14	63-4880	Hose Assembly	1
15	61-2510	Hose Assembly	1
16	61-2550	Hose Assembly	1
17	61-2540	Hose Assembly	1
18	92-2407	Hose Assembly	1
19	61-3070	Tube Assembly	1
20	61-3080	Tube Assembly	1
21	76-2550	Hose Assembly	1
22	76-2540	Hose Assembly	1
23	80-4090	Hose Assembly	2
24	92-2406	Hose Assembly	1
25	71-0860	Tube Assembly	1
26	92-2408	Hose Assembly	1



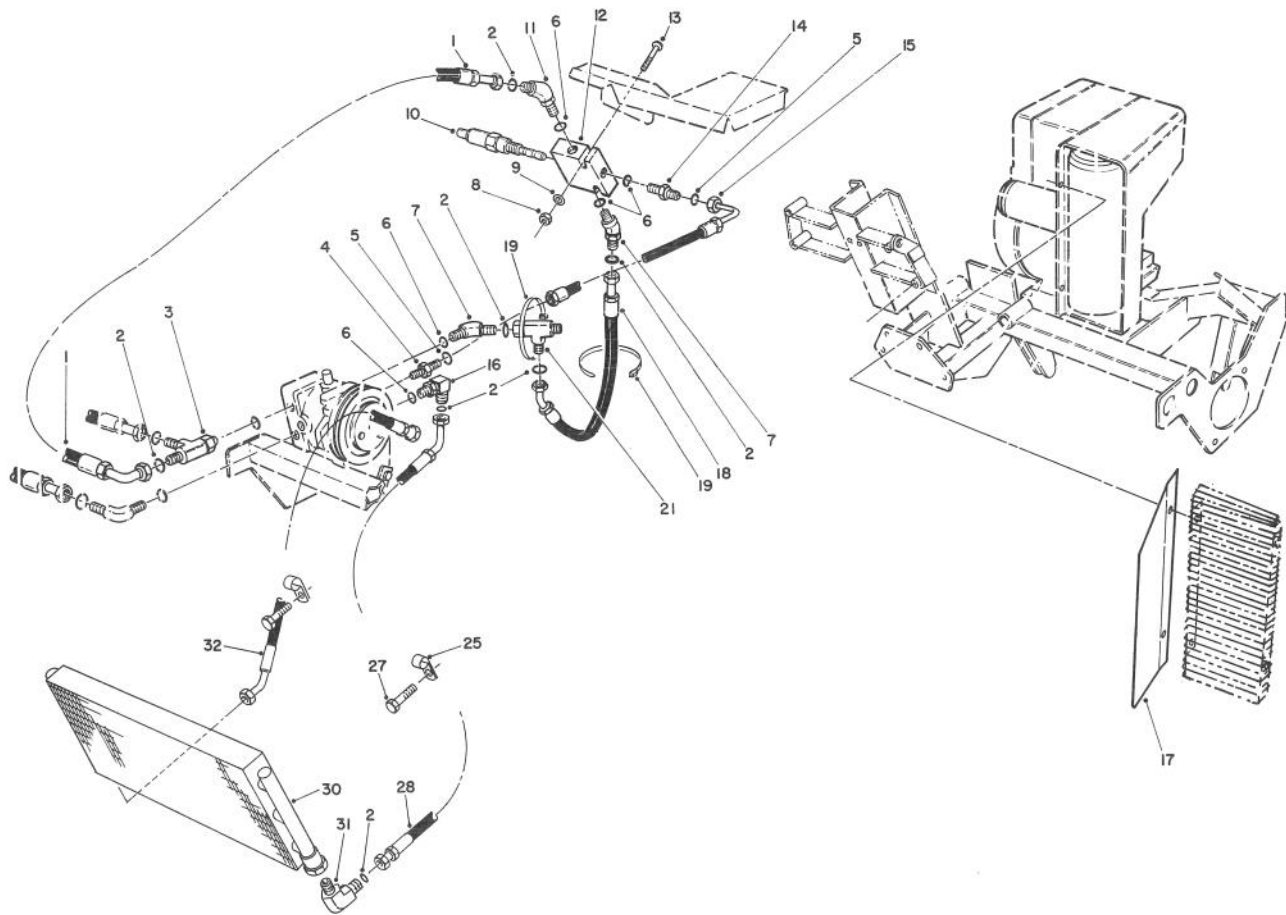
T-0885

HYDRAULIC TANK & BATTERY ASSEMBLY

Ref. No.	Part No.	Description	No. Used
1	322-3	Screw - Cap Hex. Hd.	2
2	72-4790	Clamp - Battery	1
3	3217-6	Nut - Hex.	2
4	32103-12	Nut - Wing	2
5	3256-1	Washer - Flat	2
6	28-8080	Boot - Battery Terminal	1
7	82-4640	Battery - 12 Volt	1
8	10-8120	Bolt - Battery	2
9	32108-101	Screw - Flathead	1
10	76-0440	Battery Support W.A.	1
11	3290-199	Nut - Speed	1
12	3254-1	Washer - Lock	2
13	3219-14	Nut - Hex.	2
14	28-4210	Solenoid - Starter	1
15	32149-2	Nut - Hex.	2
16	3253-4	Washer - Lock	2
17	3218-13	Nut - Lock	2

Ref. No.	Part No.	Description	No. Used
18	3256-24	Washer - Flat	2
19	3253-21	Washer - Lock	2
20	11-0590	Screw - Cap Hex. Hd.	2
21	322-43	Screw - Cap Hex. Hd.	4
22	3256-70	Washer - Flat	4
23	32128-25	Nut - Lock	2
24	61-0100	Tank - Hydraulic	1
25	66-6840	Decal - Hot	1
27	61-2790	Screen - Filler	1
28	237-71	O-Ring	1
29	76-0240	Dipstick Assembly	1
30	76-0220	Foam - Oil Filter	1
31	76-0190	Cap - Oil	1
32	84-1830	Cap - Battery Vent	1
*	76-0200	Oil Cap Assembly (Incl. Ref. #28-31)	1

*Not Illustrated



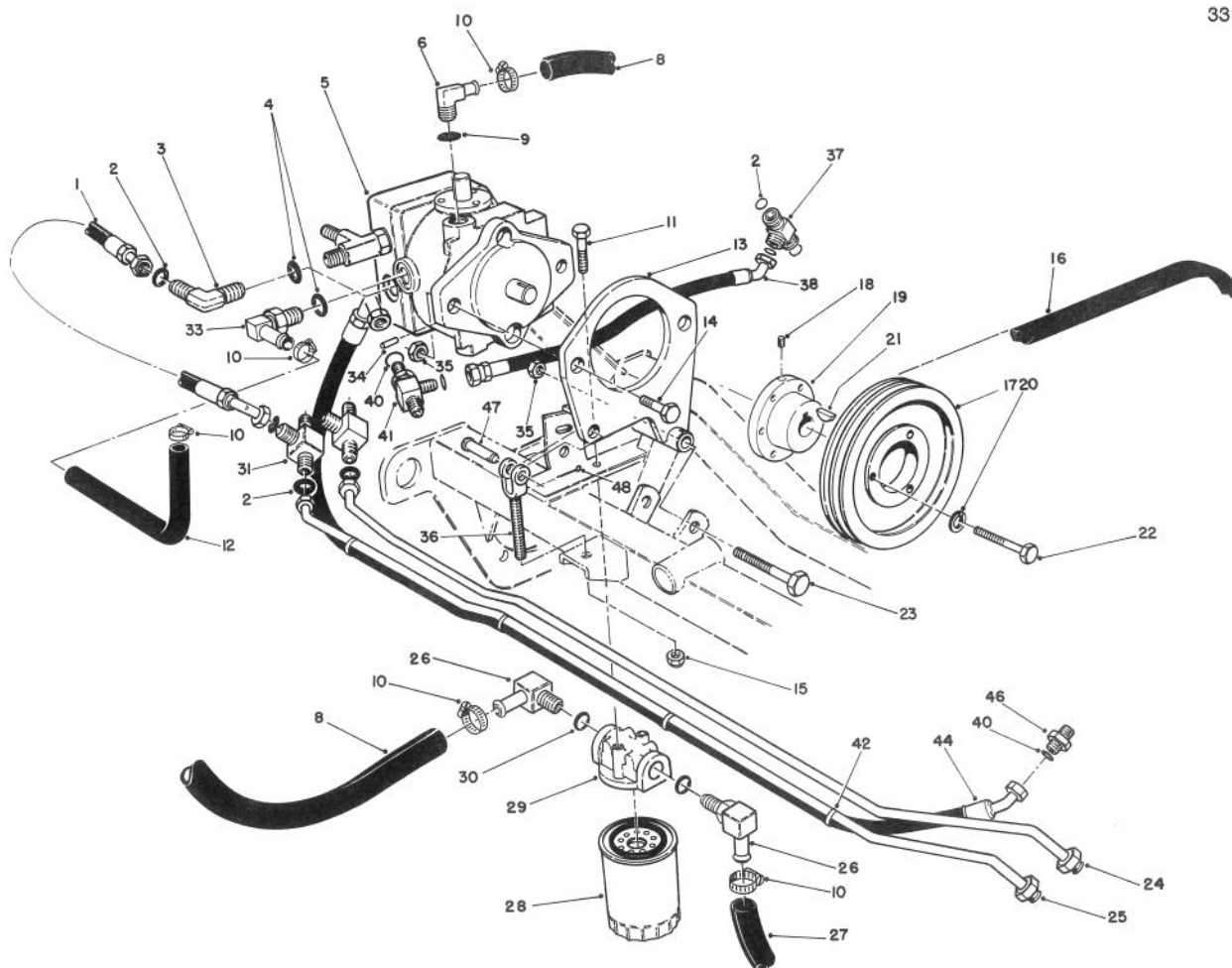
T-0886

HYDRAULIC OIL COOLER ASSEMBLY

Ref. No.	Part No.	Description	No. Used
1	76-2530	Hydraulic Hose Assembly	1
2	237-30	Seal - O-Ring	8
3	340-109	Fitting - Male Tee (Incl. Ref. #2)	1
4	340-107	Fitting - Straight (Incl. Ref. #5)	1
5	237-150	Seal - O-Ring	2
6	237-22	Seal - O-Ring	5
7	340-96	Fitting - 45° Elbow (Incl. Ref. #2 & 6)	2
8	32128-32	Nut - Hex. Flange	2
9	3256-22	Washer - Flat	2
10	63-8790	Cartridge Valve Assembly	1
11	63-8770	Fitting - 45° Orifice (Incl. Ref. #2 & 6)	1
12	63-5080	Pressure Sequence Valve (Incl. Ref. #10)	1
13	321-11	Screw - Cap Hex. Hd.	2
14	340-1	Fitting - Straight (Incl. Ref. #5 & 6)	1

Ref. No.	Part No.	Description	No. Used
15	63-4890	Hydraulic Hose Assembly	1
16	340-99	Fitting - Hydraulic 90° (Incl. Ref. #2)	1
17	63-8940	Shield - Cooler	1
18	63-4880	Hydraulic Hose Assembly	1
19	3290-379	Tie - Cable	2
21	340-104	Fitting - Male/Female Tee (Incl. Ref. #2)	1
25	2412-81	Clamp - R	2
27	32144-69	Screw - Self Tapping	2
28	92-2407	Hydraulic Hose Assembly	1
30	63-5400	Exchanger - Heat	1
31	340-168	Fitting - 90° Male Elbow (Incl. Ref. #2)	2
32	92-2406	Hydraulic Hose Assembly	1
*	63-8800	Seal Kit Pressure Sequence Valve (For Ref. #10 & 12)	1
*	56-7982	Sleeve - Protective	1

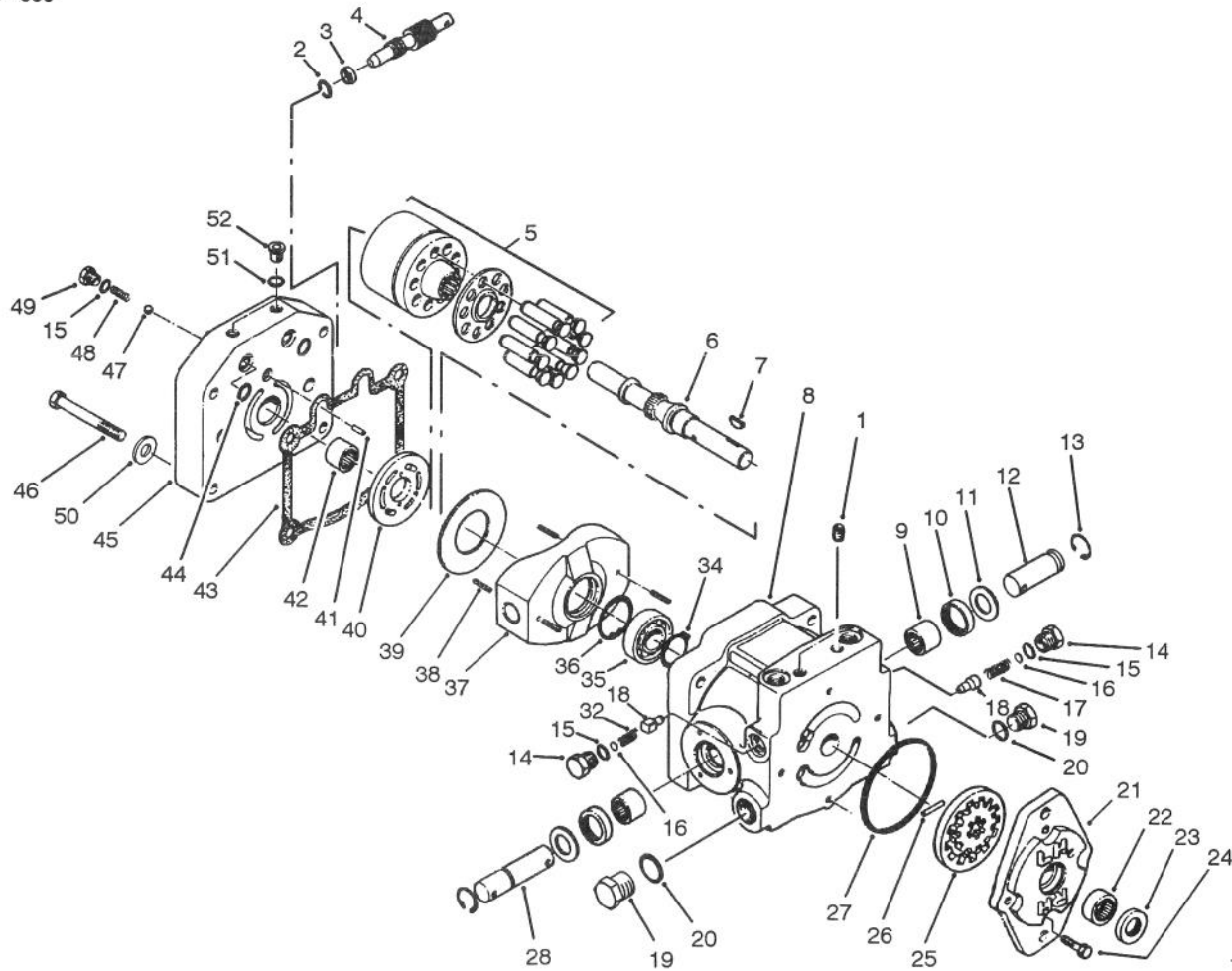
*Not Illustrated



T-0887

HYDRAULIC DRIVE ASSEMBLY

Ref. No.	Part No.	Description	No. Used	Ref. No.	Part No.	Description	No. Used
1	76-2520	Hydraulic Hose	2	23	325-18	Screw - Cap Hex Hd.	1
2	237-30	O-Ring	12	24	61-3080	Tube - Hyd. L.H. (Front)	1
3	340-98	Fitting - 90° Elbow (Incl. Ref. #2 & 4)	1	25	61-3070	Tube - Hyd. L.H. (Rear)	1
4	237-79	O-Ring	2	26	23-8910	Fitting - 90° Hose Elbow (incl. Ref. #30)	2
5	92-9023	Pump Assembly (Incl. Ref. #21)	1	27	61-2550	Hose - Hydraulic	1
6	61-2710	Fitting - 90° Hose Elbow (Incl. Ref. #9)	1	28	54-0110	Filter - Oil	1
8	61-2540	Hose - Hydraulic	1	29	61-3770	Head - Filter	1
9	237-80	O-Ring	1	30	237-117	O-Ring	2
10	2412-24	Clamp - Hose	6	31	340-102	Fitting - Tee (Incl. Ref. #2)	2
11	3234-4	Screw - Hex Washer Hd.	2	33	353-954	Fitting - 90° Elbow (Incl. Ref. #4)	1
12	92-2408	Hose - Hydraulic	1	34	32121-34	Pin - Roll	1
13	61-2230	Plate - Pump Mount	1	35	3296-23	Nut - Lock	3
14	325-7	Screw - Cap Hex Hd.	2	36	76-2220	Adjustment Yoke Assembly	1
15	3296-6	Nut - Lock	1	37	340-102	T-Fitting	1
16	92-1821	V-Belt - Pump	1	38	76-2540	Hose Assembly - Hyd.	1
17	61-3320	Pulley - Pump	1	40	237-30	O-Ring	3
18	3245-9	Screw - Set	1	41	340-140	Fitting - Tee	1
19	61-3350	Bushing - Taper (Incl. Ref. #12, 18 & 22)	1	42	3290-379	Cable Tie	4
20	3253-3	Washer - Lock	3	44	76-2550	Hose Assembly	1
21	3257-32	Key - Woodruff	1	46	340-92	Fitting	1
22	321-13	Screw - Cap Hex Hd.	3	47	283-2	Pin - Yoke	1
				48	3272-6	Pin - Cotter	1



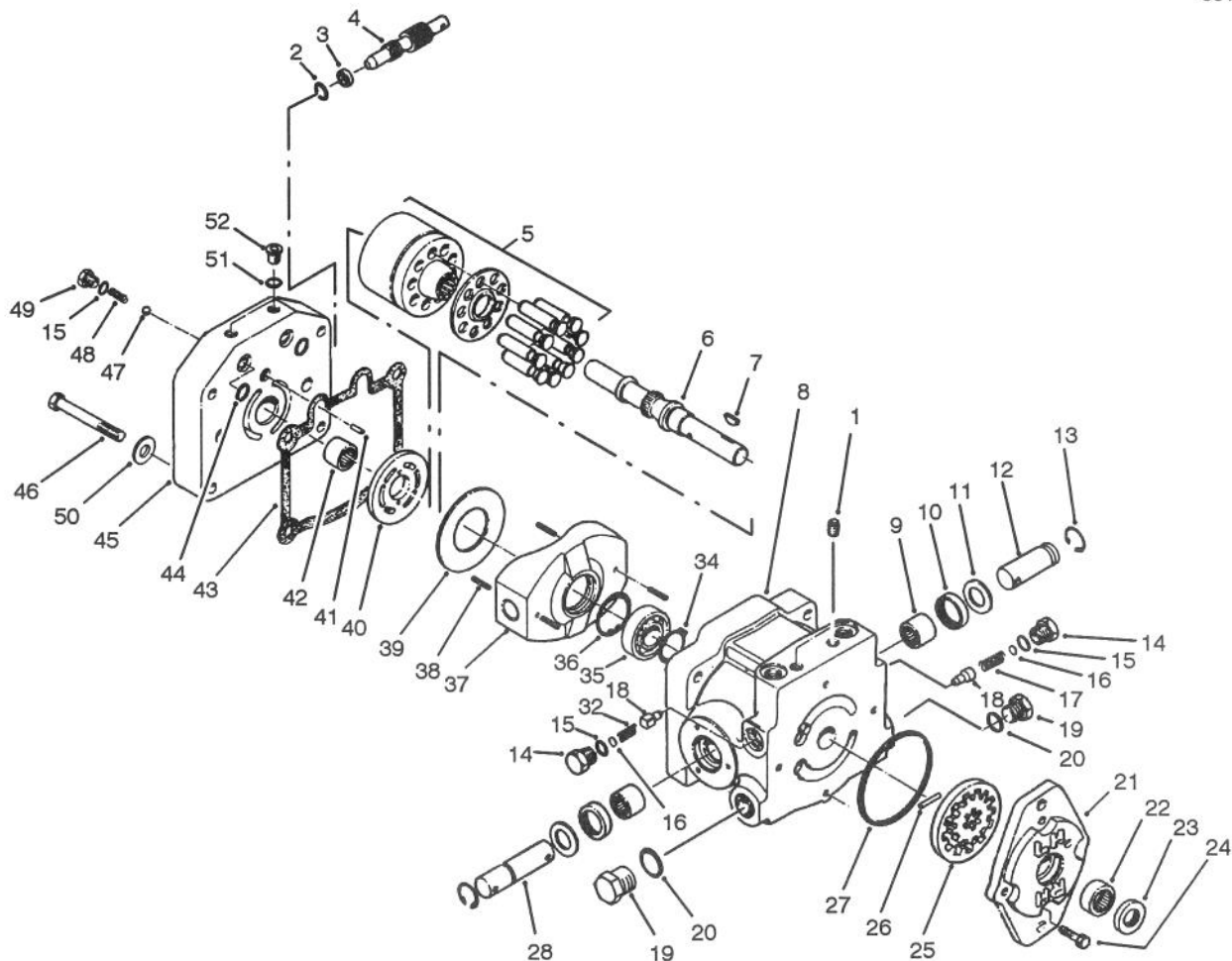
T-1809

HYDRAULIC PUMP ASSEMBLY NO. 92-9023

Ref. No.	Part No.	Description	No. Used
1	285-17	Plug - Pipe	2
2	237-22	O-Ring	1
3	25-2630	Ring	1
4	88-8220	Valve - By-Pass	1
5	48-1800	Cylinder Block Kit	1
6	67-8020	Shaft - Pump	1
7	3257-32	Key - Woodruff	1
8	92-9023	Hydraulic Pump Assembly (Complete)	1
9	252-82	Bearing - Needle	2
10	25-3210	Seal - Lip	2
11	25-2510	Washer	2
12	49-8480	Shaft - Trunion	1
13	32151-46	Ring - Retaining	2
14	25-2460	Plug	2
15	237-86	O-Ring	4
16	25-2470	Kit - Shim Pack	2
17	25-2570	Spring - Relief Valve	1
18	83-7260	Cone - Relief Valve	2
19	67-8030	Plug Assembly (Incl. Ref. #20)	2
20	67-8040	O-Ring	2
21	92-7940	Housing - Charge Pump	1
22	67-8050	Bearing - Needle	1
23	67-8060	Seal - Lip	1

Ref. No.	Part No.	Description	No. Used
24	322-4	Screw - Cap Hex. Hd.	4
25	25-2680	Gerotor Assembly	1
26	25-2530	Pin - Straight	1
27	237-95	O-Ring	1
28	28-3670	Shaft - Trunion	1
32	25-2480	Spring - Charge Relief	1
34	32120-15	Ring - Retaining	1
35	251-8	Bearing - Ball	1
36	32120-11	Ring - Retaining	1
37	25-2450	Swash/Plate	1
38	32121-91	Pin - Coiled Spring	3
39	25-2380	Plate - Thrust	1
40	25-2390	Plate - Valve	1
41	25-2430	Pin - Straight	1
42	46-8400	Bearing - Needle	1
43	25-2400	Gasket	1
44	62-4290	O-Ring	2
45		Cap - Pump End	1
46	323-11	Screw - Cap Hex. Hd.	4
47	25-2490	Ball - Check Valve	2
48	25-2640	Spring - Check Valve	2
49	25-2650	Plug - Check Valve	2
50	3256-24	Washer	1
51	92-8777	Seal - O-Ring	2

*Not Illustrated



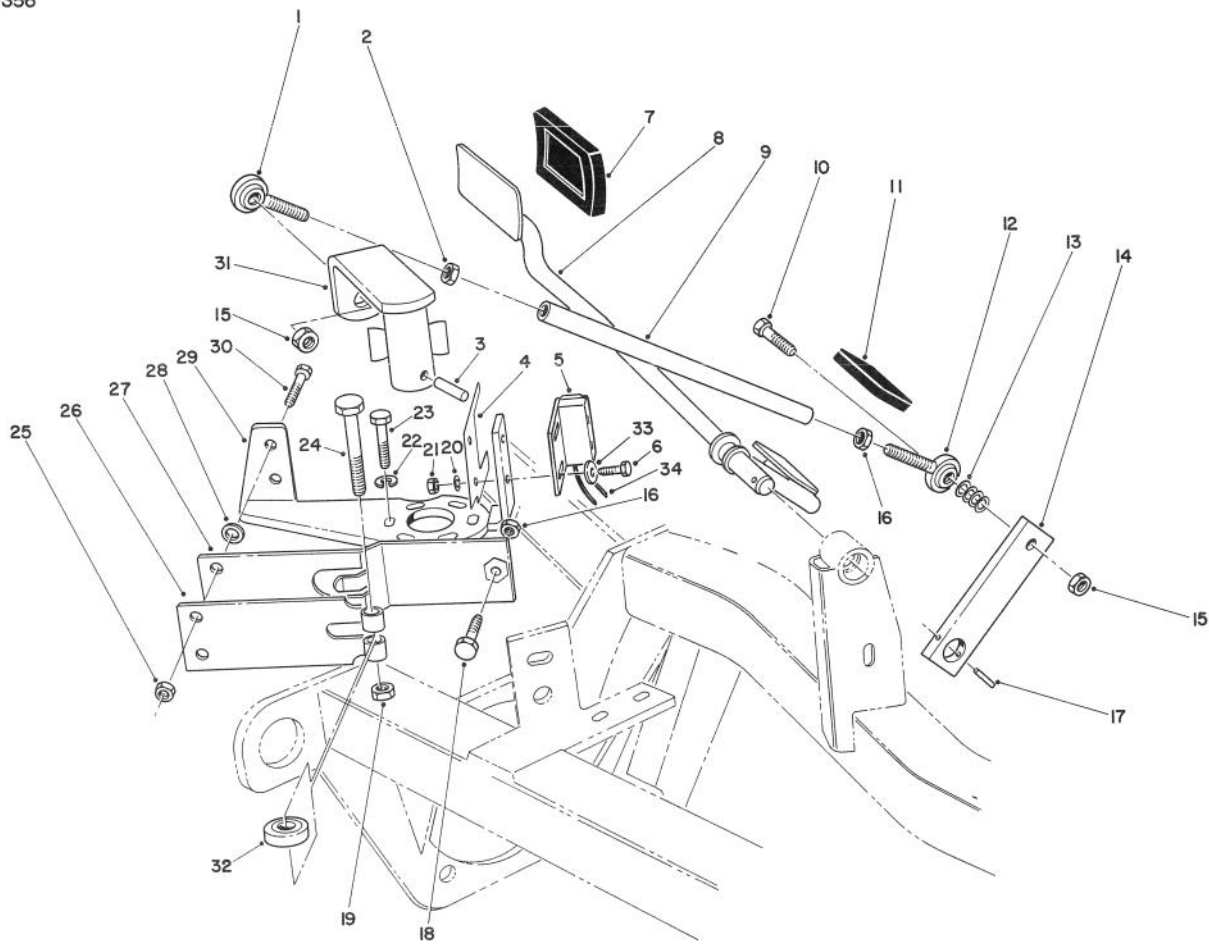
T-1809

HYDRAULIC PUMP ASSEMBLY NO. 92-9023 (Continued)

Ref. No.	Part No.	Description	No. Used
52	92-8776	Plug Assembly (Incl. Ref. #51)	2
*	49-8510	Kit - Charge Relief (Incl. Ref. #14-16, 18 & 32)	1

Ref. No.	Part No.	Description	No. Used
*	25-3180	Kit - Check Valve (Incl. Ref. #15, 47-49)	1
*	49-8520	Kit - Implement Relief (Incl. Ref. #14-18)	1

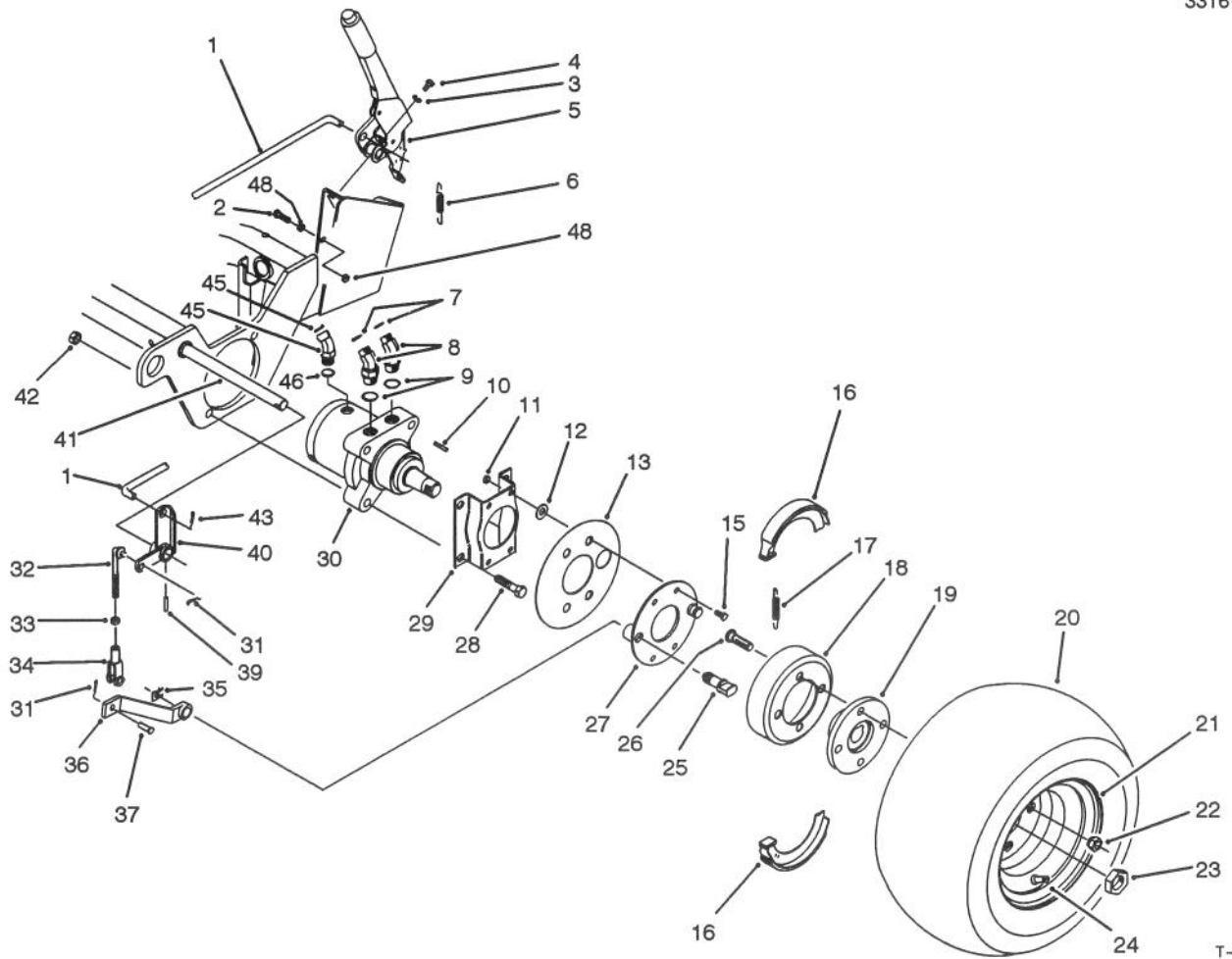
*Not Illustrated



T-1069

TRACTION CONTROLS ASSEMBLY

Ref. No.	Part No.	Description	No. Used	Ref. No.	Part No.	Description	No. Used
1	2411-53	Bearing - Rod End L.H.	1	18	3210-7	Capscrew - Hex. Hd.	1
2	3220-20	Nut - Jam L.H.	1	19	3296-29	Nut - Lock	1
3	32121-24	Pin - Roll	1	20	3254-9	Washer - Lock	2
4	46-8810	Stop - Spring	1	21	3217-29	Nut - Lock	2
5	92-7905	Neutral Switch Assembly (Incl. Ref. #34)	1	22	3255-7	Washer - Lock	3
6	3249-3	Screw - Rd. Hd. Machine	2	23	42-2040	Screw - Hex. Hd. Self Tap	3
7	74-9100	Pad - Pedal Forward	1	24	322-17	Capscrew - Hex. Hd.	1
8	76-2170	Pedal - Traction	1	25	3296-16	Nut - Lock	2
9	76-0420	Rod - Pump Control	1	26	29-6150	Spring - Leaf	1
10	322-7	Capscrew - Hex. Nd.	2	27	29-6170	Spring - Extended Leaf	1
11	74-9110	Pad - Pedal Reverse	1	28	51-3150	Shim - Spring Arm	1
12	2411-52	Bear - Rod End R.H.	1	29	29-6120	Plate - Pump	1
13	3256-74	Washer - Flat	8	30	321-6	Screw - Cap Hex. Hd.	2
14	61-2610	Arm - Traction	1	31	61-2940	Lever - Pump	1
15	32153-3	Nut - Lock	2	32	251-259	Bearing - Ball	1
16	3220-2	Nut - Jam R.H.	1	33	3256-53	Washer - Flat	2
17	32121-6	Pin - Roll	1	34	92-7906	Switch - Neutral	1



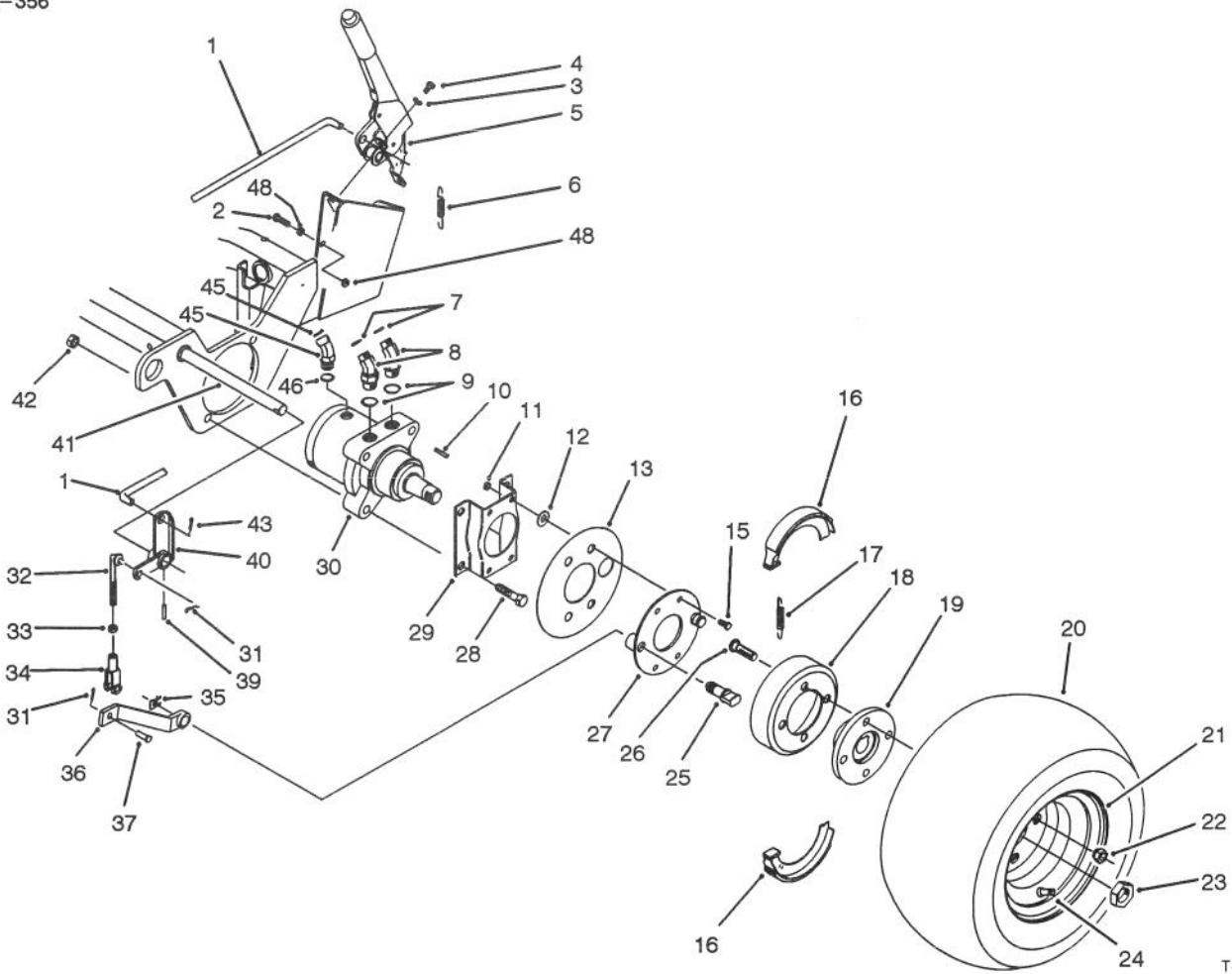
T-1416

FRONT WHEEL ASSEMBLY

Ref. No.	Part No.	Description	No. Used
1	83-9350	Rod - Parking Brake	1
2	322-17	Screw - Cap Hex. Hd.	1
3	3253-4	Washer - Lock	2
4	322-4	Screw - Hex. Washer Hd.	2
5	61-3990	Parking Brake Assembly	1
6	5-7290	Spring - Extension	1
7	237-30	Seal - O-Ring	4
8	340-89	Fitting - Hydraulic 45° (Incl. Ref. 7 & 9)	4
9	237-80	Seal - O-Ring	4
10	65-4640	Key - Square	2
11	3296-42	Nut - Lock	8
12	3256-16	Washer - Flat	8
13	83-9340	Shield - Grass	2
15	321-5	Screw - Cap Hex. Hd.	8
16	70-9840	Shoe - Brake	4
17	70-9880	Spring - Extension	4
18	10-6821	Brake Drum Assembly (Incl. Ref. #19 & 26)	2
19	10-6870	Hub - Wheel	2
20	231-127	Tire	2
21	217-60	Rim	2
22	242-50	Nut - Lug	8

Ref. No.	Part No.	Description	No. Used
23	26-3790	Nut - Lock	2
24	232-27	Valve - Stem	2
25	70-9860	Pin - Pivot Brake	2
26	85-6540	Stud - Drive	8
27	70-9870	Plate - Brake	2
28	325-11	Screw - Cap Hex. Hd.	8
29	84-2000	Bracket - Brake	2
30	66-5291	Hydraulic Motor Assembly (Incl. Ref. #10)	2
31	3272-6	Pin - Cotter	4
32	84-1990	Rod - Adjusting	2
33	3220-2	Nut - Jam	2
34	282-2	Clevis	2
35	70-9850	Clip - Retaining	2
36	83-9250	Lever - Brake	2
37	283-1	Pin - Clevis	2
39	32121-79	Pin - Roll	2
40	83-9270	Pivot - Brake L.H.	1
*	83-9310	Pivot - Brake R.H.	1
41	83-9330	Shaft - Brake	1
42	3296-23	Nut - Lock	8
43	3272-7	Pin - Cotter	1

*Not Illustrated



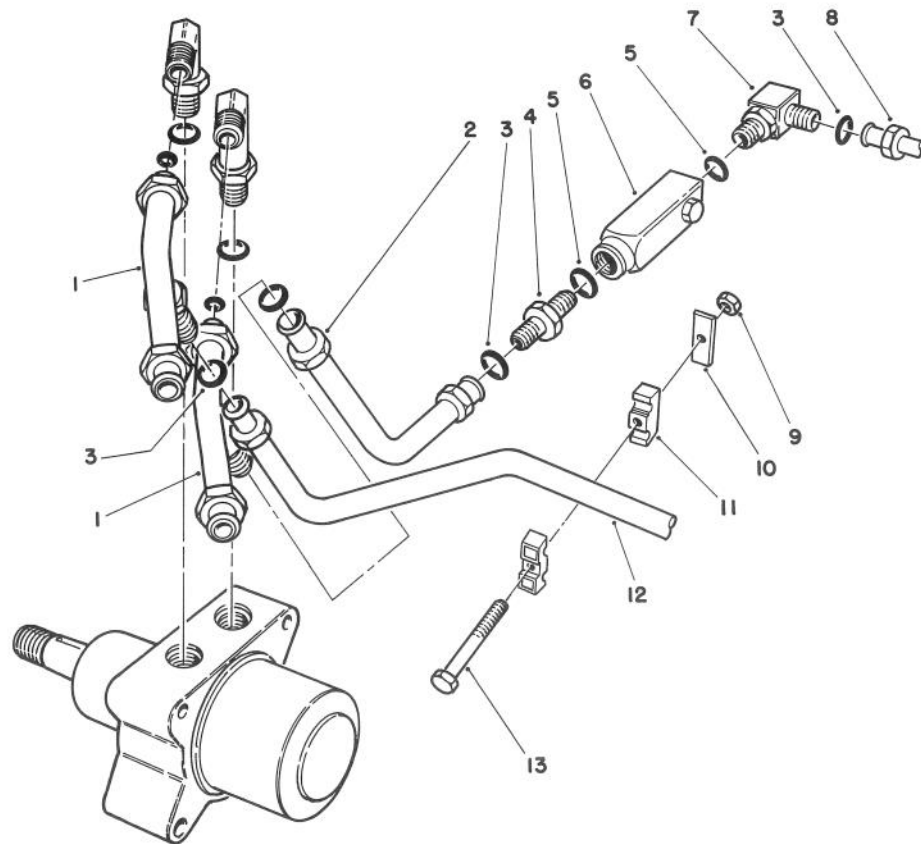
T-1416

FRONT WHEEL ASSEMBLY (Continued)

Ref. No.	Part No.	Description	No. Used
45	340-103	Fitting - Hydraulic 45° (Incl. Ref. #46 & 47) (For Left Wheel Motor)	1
*	340-140	Fitting - Hydraulic Tee (Incl. Ref. #46 & 47) (For Right Wheel Motor)	1

Ref. No.	Part No.	Description	No. Used
46	237-78	Seal - O-Ring	2
47	237-21	Seal - O-Ring	3
48	32128-20	Nut - Lock	2
*	71-1500	Brake Assembly (Incl. Ref. #16, 17, 25, 27 & 35)	2

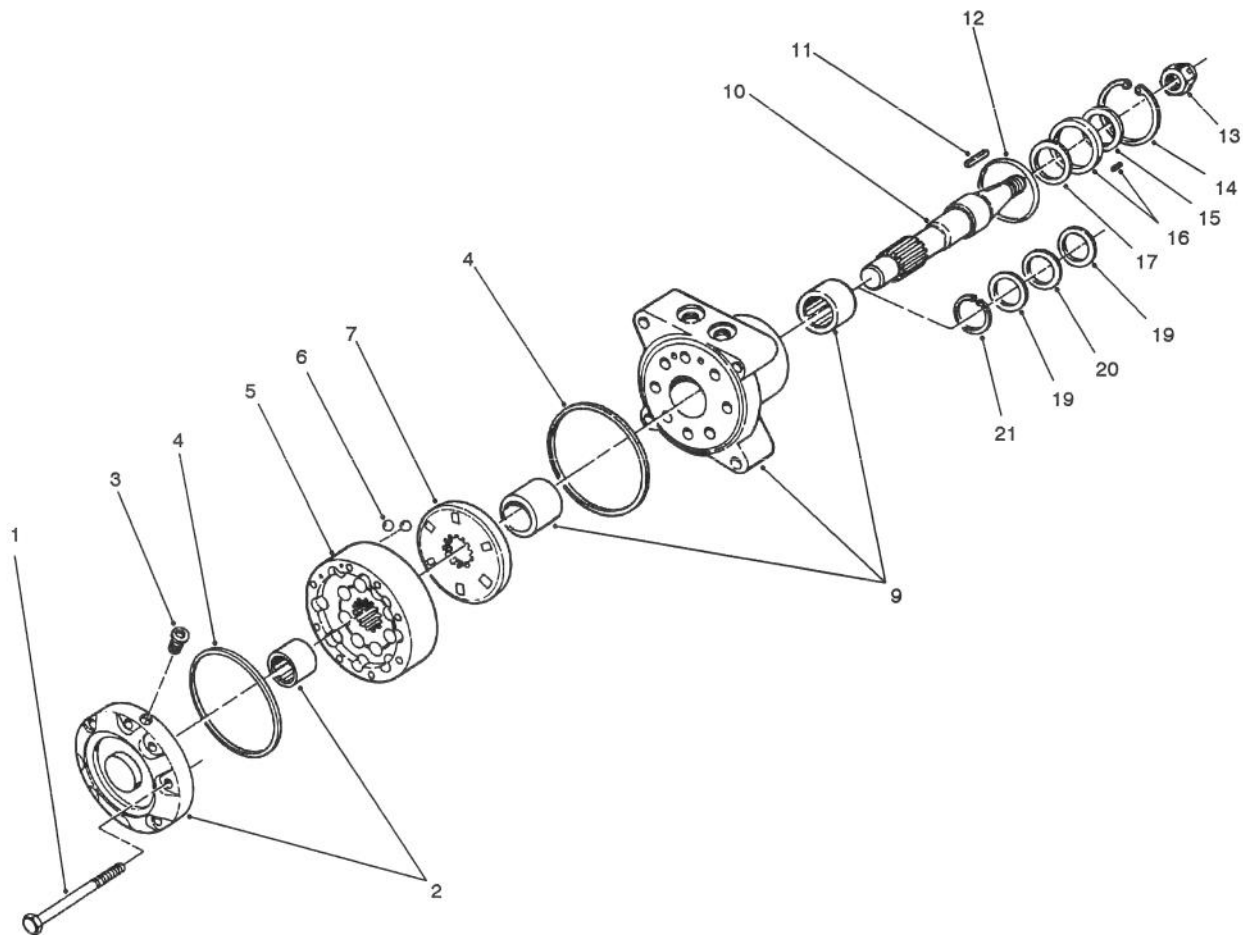
*Not Illustrated



T-0889

RIGHT FRONT WHEEL PLUMBING ASSEMBLY

Ref. No.	Part No.	Description	No. Used	Ref. No.	Part No.	Description	No. Used
1	71-0870	Tee - Tube Assembly (Incl. Ref. #3)	2	7	340-99	Fitting (Incl. Ref. #3 & 5)	1
2	71-0880	Tube Assembly	1	8	71-0850	Tube Assembly	1
3	237-30	O-Ring	4	9	32128-14	Flange Locknut	1
4	340-5	Fitting (Incl. Ref. #3 & 5)	1	10	69-9760	Cover - Plate	1
5	237-42	O-Ring	2	11	56-7976	Clamp - Tube	2
6	71-2960	Valve - Flow Control	1	12	71-0910	Tube Assembly	1
				13	321-28	Screw - Cap Hex Hd.	1



T-0274

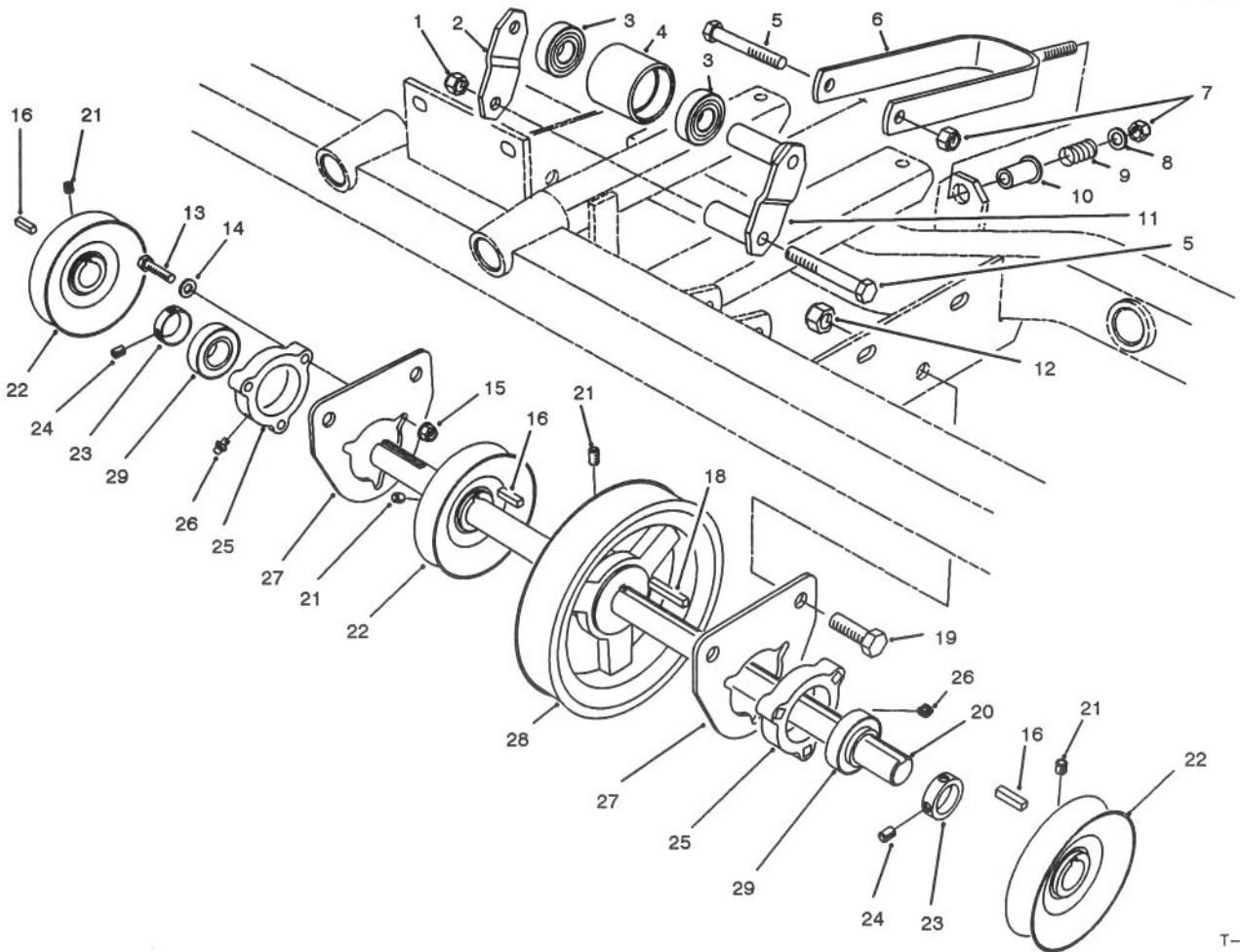
HYDRAULIC DRIVE MOTOR ASSEMBLY NO. 66-5291

Ref. No.	Part No.	Description	No. Used
1	65-4580	Screw - Cap Hex Hd.	8
2	65-4680	Cover & Bearing Assembly	1
3	65-4560	Plug - Hex (Hollow)	1
4	65-4570	Seal - Square Ring	2
5	66-6110	IGR Assembly	1
6	65-4550	Valve - Check Ball	2
7	70-8150	Plate - Valve	1
9	65-4670	Body & Bearing Assembly	1
10	92-1157	Shaft	1
11	3257-15	Key - Square	1
12	65-4620	Seal - O-Ring	1

Ref. No.	Part No.	Description	No. Used
14	65-4500	Seal - Snap Ring	1
†15		Seal - Dust	1
†16		Retainer/Pin	1
†17		Seal - Lip	1
*	76-2350	Seal/Retainer Assembly (Incl. Ref. #15-17)	1
19	65-4600	Washer - Thrust	2
20	65-4610	Bearing - Thrust	1
21	65-4590	Ring - Snap	1
*	76-2360	Body Seal Kit (Incl. Ref. #4,12 & 15-17)	1

*Not Illustrated

†Not available from Toro as a replacement part.



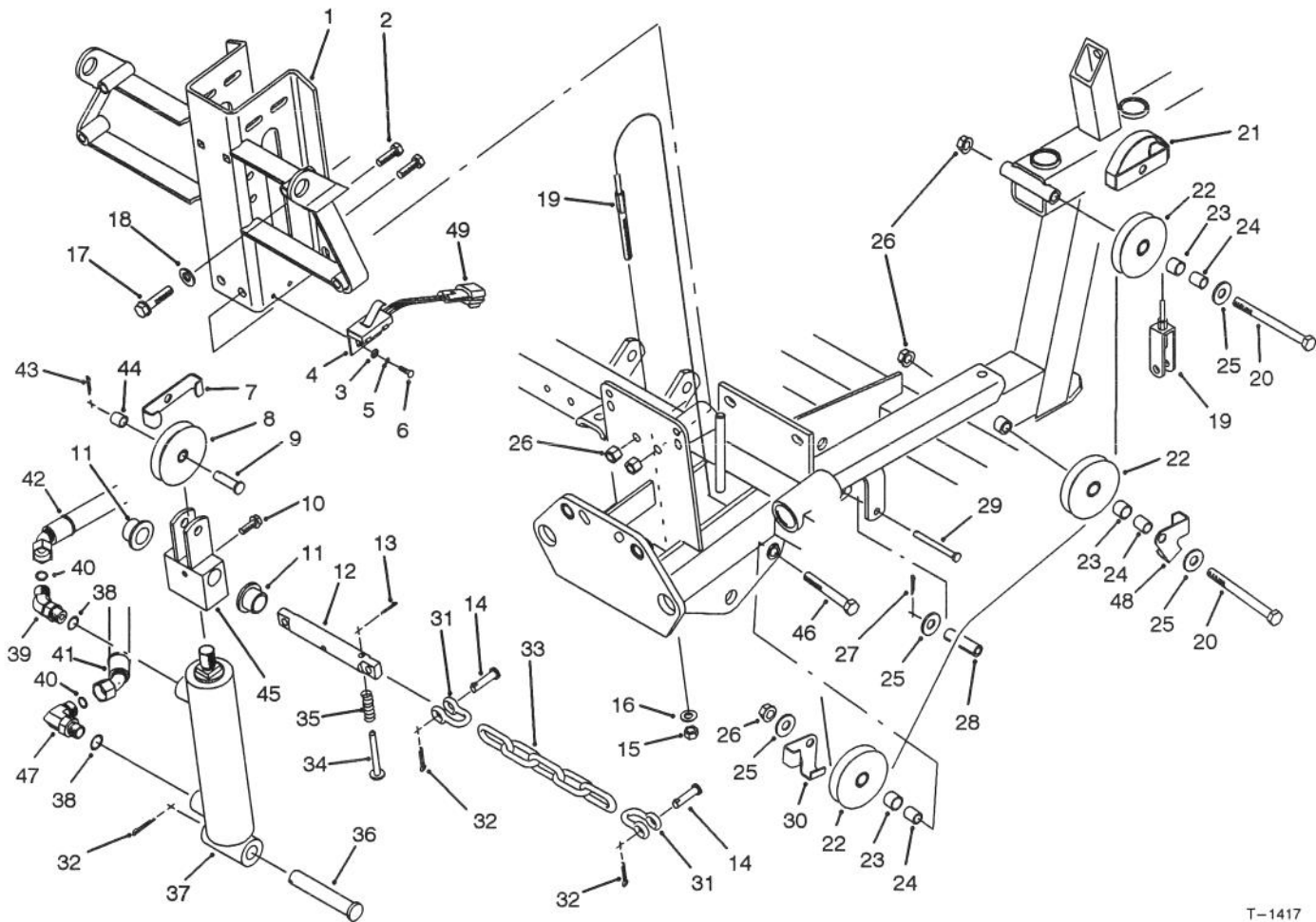
T-0276

JACKSHAFT ASSEMBLY

Ref. No.	Part No.	Description	No. Used
1	3296-39	Nut - Lock	2
2	67-7911	Strap - Idler Bracket	1
3	38-7820	Bearing - Idler	2
4	67-7750	Pulley - Idler	1
5	323-15	Screw - Cap Hex. Hd.	2
6	67-7890	Belt Tensioner W.A.	1
7	3296-59	Nut - Lock	1
8	3256-24	Washer - Flat	1
9	83-9690	Spring - Compression	1
10	83-9810	Bushing - Flange	1
11	67-7870	Idler Bracket W.A.	1
12	3296-23	Nut - Lock	4
13	322-17	Screw - Cap Hex. Hd.	6
14	3256-23	Washer - Flat	6
15	32128-25	Nut - Flange Lock	6
16	5-7280	Key - Square (Short)	3

Ref. No.	Part No.	Description	No. Used
18	67-7490	Key - Square (Long)	1
19	325-4	Screw - Cap Hex. Hd.	4
20	83-7820	Shaft - Drive	1
21	3242-4	Screw - Set	8
22	61-0140	Pulley - Jackshaft	3
23	251-77	Collar - Locking (Incl. Ref. #24)	2
24	3245-35	Screw - Set	4
25	76-2460	Bearing Assembly (Incl. Ref. #23, 26 & 29)	2
26	302-5	Fitting - Grease	2
27	61-2350	Mount - Bearing	2
28	61-0070	Pulley - Poly V	1
29	251-337	Bearing	2
*	13-1279	Idler Pulley Assembly (Incl. Ref. #3, 4 & 11)	1

*Not Illustrated

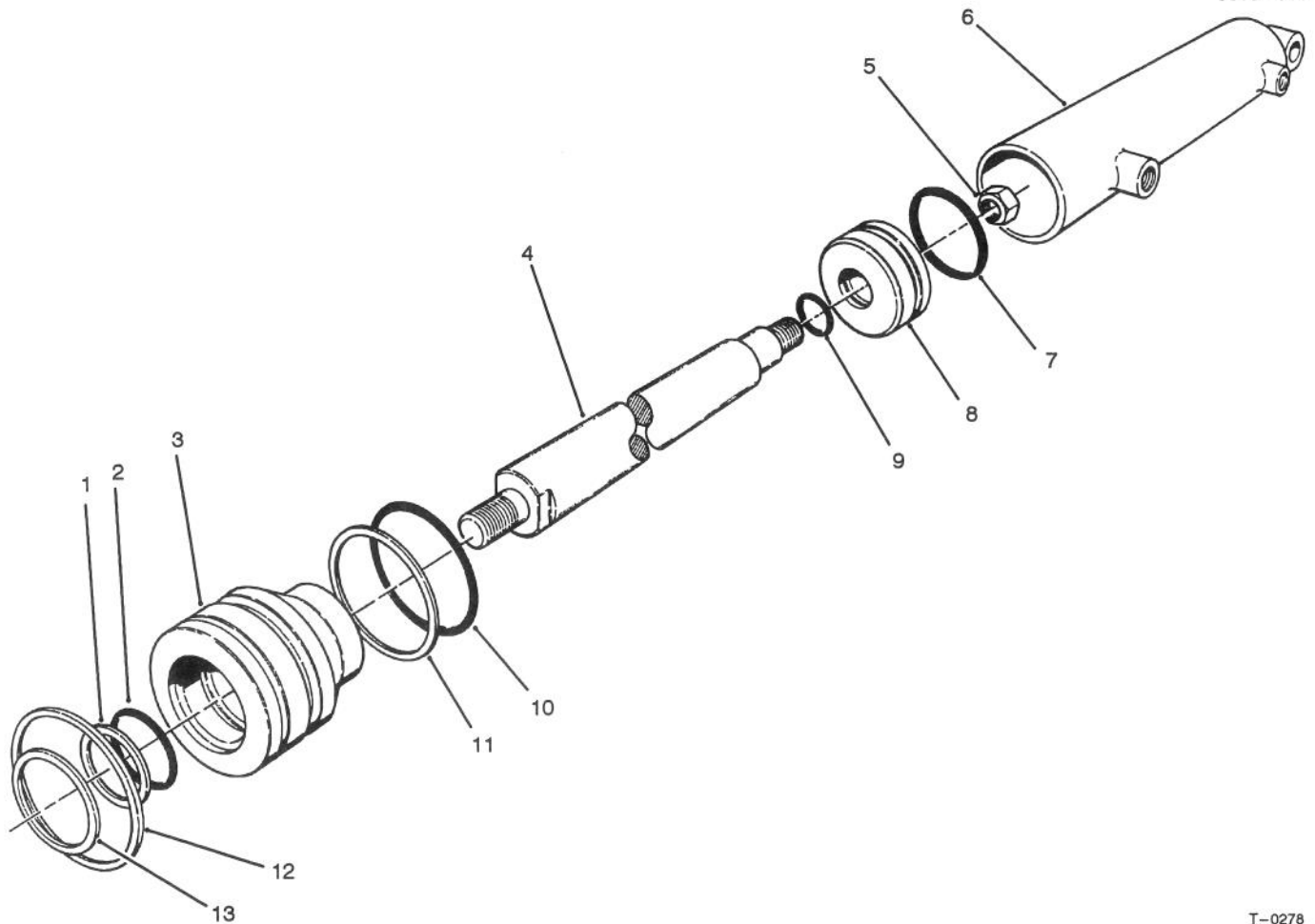


T-1417

CUTTING UNIT LIFT ASSEMBLY

Ref. No.	Part No.	Description	No. Used
1	92-1840	Bracket - Cylinder & Cooler	1
2	323-6	Screw - Cap Hex. Hd.	2
3	3256-53	Washer - Flat	2
4	92-7905	Lift Switch Assembly (Incl. Ref. #49)	1
5	3254-9	Washer - Lock Internal	2
6	3249-5	Screw - Round Hd.	2
7	5-2655	Keeper - Cable	1
8	5-2653	Cable Pulley Assembly (Incl. Ref. #44)	1
9	283-42	Pin - Clevis	1
10	3234-4	Screw - Hex. Washer Hd.	1
11	84-8440	Bushing - Flange	2
12	72-4190	Pin - Cylinder Guide	1
13	3272-4	Pin - Cotter	1
14	283-6	Pin - Clevis	4
15	3296-4	Nut - Lock	1
16	3256-23	Washer - Flat	1
17	11-0590	Screw - Thread Forming	4
18	3256-24	Washer - Flat	4
19	61-3260	Cable - Lift	1
20	323-23	Screw - Cap Hex. Hd.	2
21	61-3240	Keeper - Cable	1
22	61-3210	Cable Pulley Assembly (Incl. Ref. #23)	3
23	256-1	Bushing - Sleeve	3
24	61-3230	Spacer	3

Ref. No.	Part No.	Description	No. Used
25	3256-4	Washer - Flat	4
26	3296-39	Nut - Flange Lock	5
27	3272-4	Pin - Cotter	1
28	32121-124	Pin - Roll	1
29	283-79	Pin - Clevis	1
30	5-2656	Keeper - Cable	1
31	282-4	Clevis	4
32	3272-11	Pin - Cotter	5
33	61-3830	Chain - Lift	2
34	71-1380	Pin - Spring	1
35	71-1370	Spring - Compression	1
36	283-78	Pin - Clevis	1
37	76-0020	Hydraulic Cylinder Assembly	1
38	237-42	Seal - O-Ring	2
39	340-87	Fitting - Hydraulic 45° (Incl. Ref. #38 & 40)	1
40	237-22	Seal - O-Ring	2
41	61-2500	Hose - Hydraulic	1
42	61-2490	Hose - Hydraulic	1
43	3272-6	Pin - Cotter	1
44	61-2430	Hub - Lift	1
45	256-2	Bushing - Sleeve	1
46	323-13	Screw - Cap Hex. Hd.	1
47	340-77	Fitting - Hydraulic 90° (Incl. Ref. #38 & 40)	1
48	83-9130	Keeper - Cable	1
49	92-7906	Switch - Lift	1



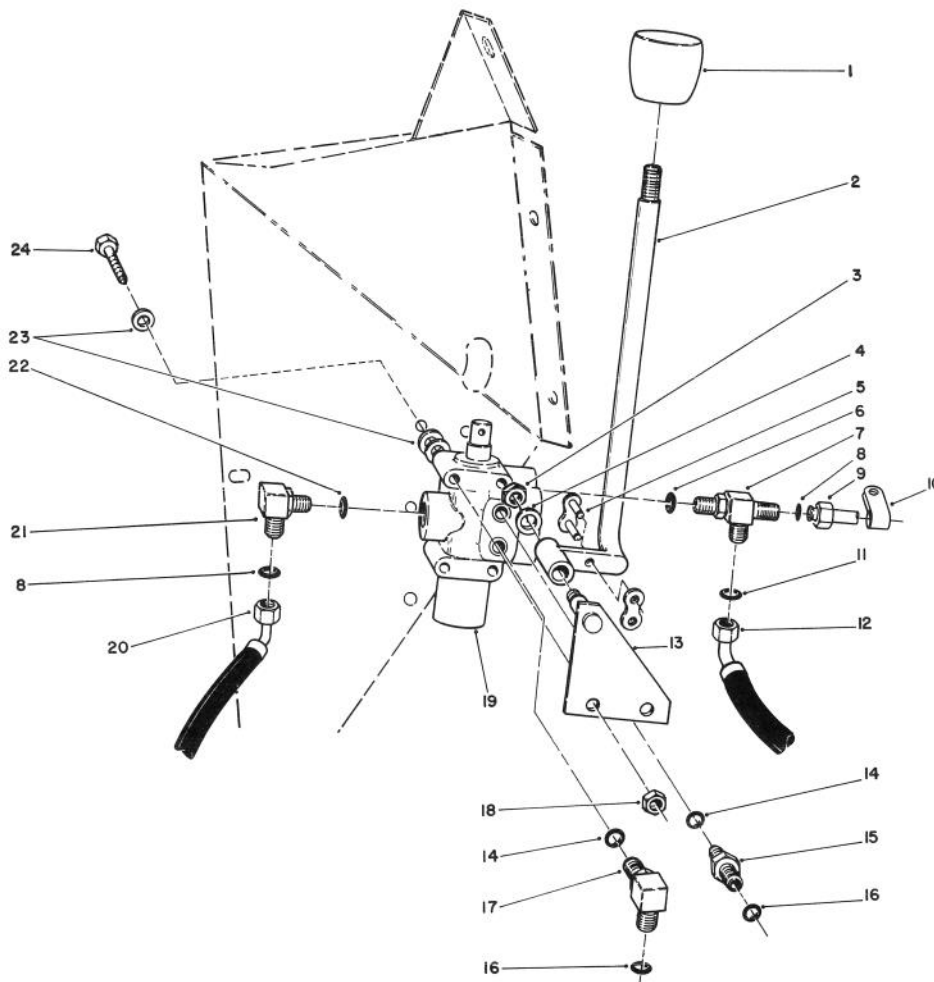
T-0278

HYDRAULIC CYLINDER ASSEMBLY NO. 76-0020

Ref. No.	Part No.	Description	No. Used
1		Washer - Backup	1
2		O-Ring	1
3	76-0090	Head	1
4	76-2320	Shaft	1
5	76-2330	Nut - Lock	1
6		Barrel	1
7		Uniring	1
8	76-0040	Piston	1

Ref. No.	Part No.	Description	No. Used
9		O-Ring	1
10		O-Ring	1
11		Washer - Backup	1
12	76-0050	Ring - Retaining	1
13		Seal-Dust	1
*	76-0030	Repair Kit (Incl. Ref. #1-2, 7, 9-11 & 13)	1

*Not Illustrated

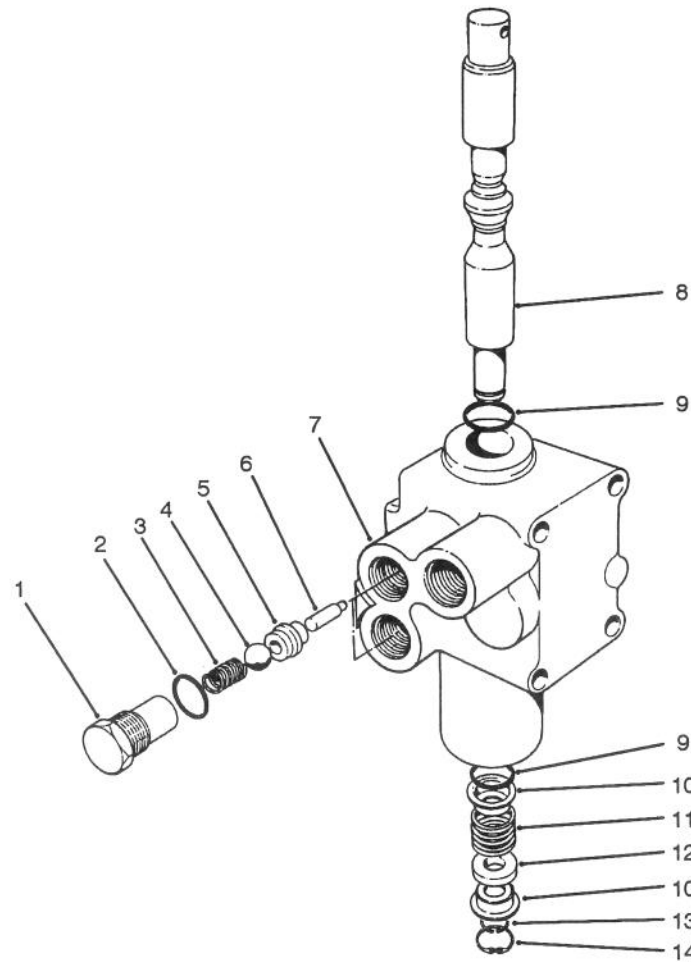


T-0890

CUTTING UNIT LIFT CONTROL VALVE ASSEMBLY

Ref. No.	Part No.	Description	No. Used
1	233-37	Knob	1
2	85-5160	Lever - Valve	1
3	3296-39	Nut Lock	1
4	3256-24	Washer	1
5	2710-16	Link - Chain	1
6	237-42	O-Ring	1
7	71-0770	Fitting (Incl. Ref. #6, 8 & 11)	
8	237-22	O-Ring	2
9	71-0860	Tube Assembly	1
10	2412-113	Clamp-R	1
11	237-30	O-Ring	1
12	61-2520	Hydraulic Hose Assy. (Up)	1
13	61-2720	Bracket - Lever	1

Ref. No.	Part No.	Description	No. Used
14	237-78	O-Ring	2
15	340-88	Fitting - Straight (Incl. Ref. #14 & 16)	1
16	237-21	O-Ring	2
17	340-97	Fitting - 90° Elbow (Incl. Ref. #14 & 16)	1
18	3296-16	Nut - Lock	3
19	43-1950	Valve - Hydraulic	1
20	61-2510	Hydraulic Hose Assy. (Low)	1
21	340-99	Fitting - 90° Elbow (Incl. Ref. #8 & 22)	1
22	237-79	O-Ring	1
23	3256-22	Washer - Flat	9
24	321-23	Screw - Cap Hex.Hd.	3

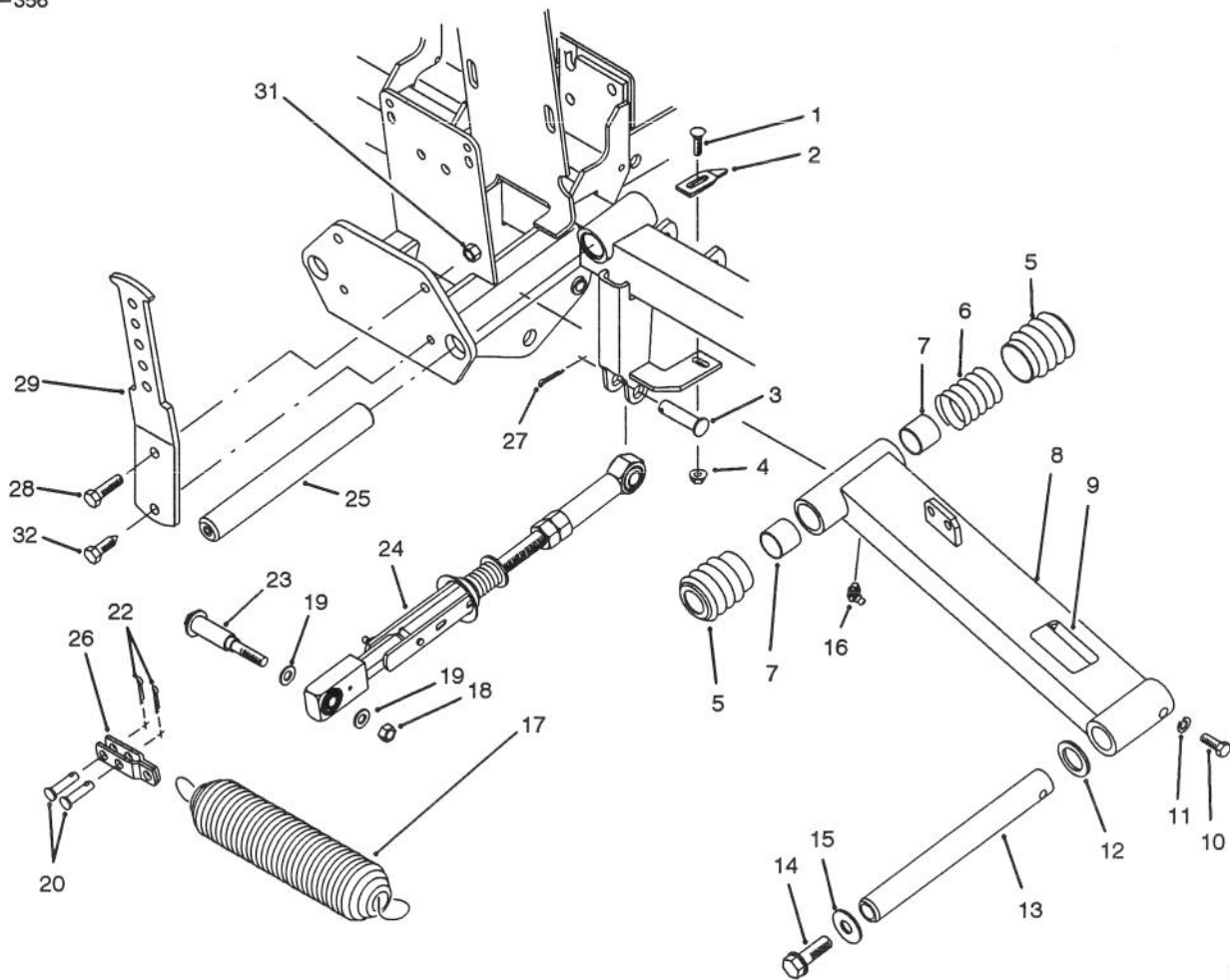


T-0280

CONTROL VALVE ASSEMBLY NO. 43-1950

Ref. No.	Part No.	Description	No. Used
1	22-8330	Plug	2
2	237-42	O-Ring	2
3	22-8340	Spring	2
4	22-8350	Ball	2
5	22-8370	Seat - Check Valve	2
6	22-8360	Pin - Cam	2
7		Body	1

Ref. No.	Part No.	Description	No. Used
8	22-8420	Spool	1
9	22-8500	O-Ring	2
10	22-8380	Retainer - Spring	2
11	22-8410	Spring	1
12	23-3030	Spacer	1
13	22-8480	Snap Ring- Spool	1
14	22-8490	Snap Ring	1



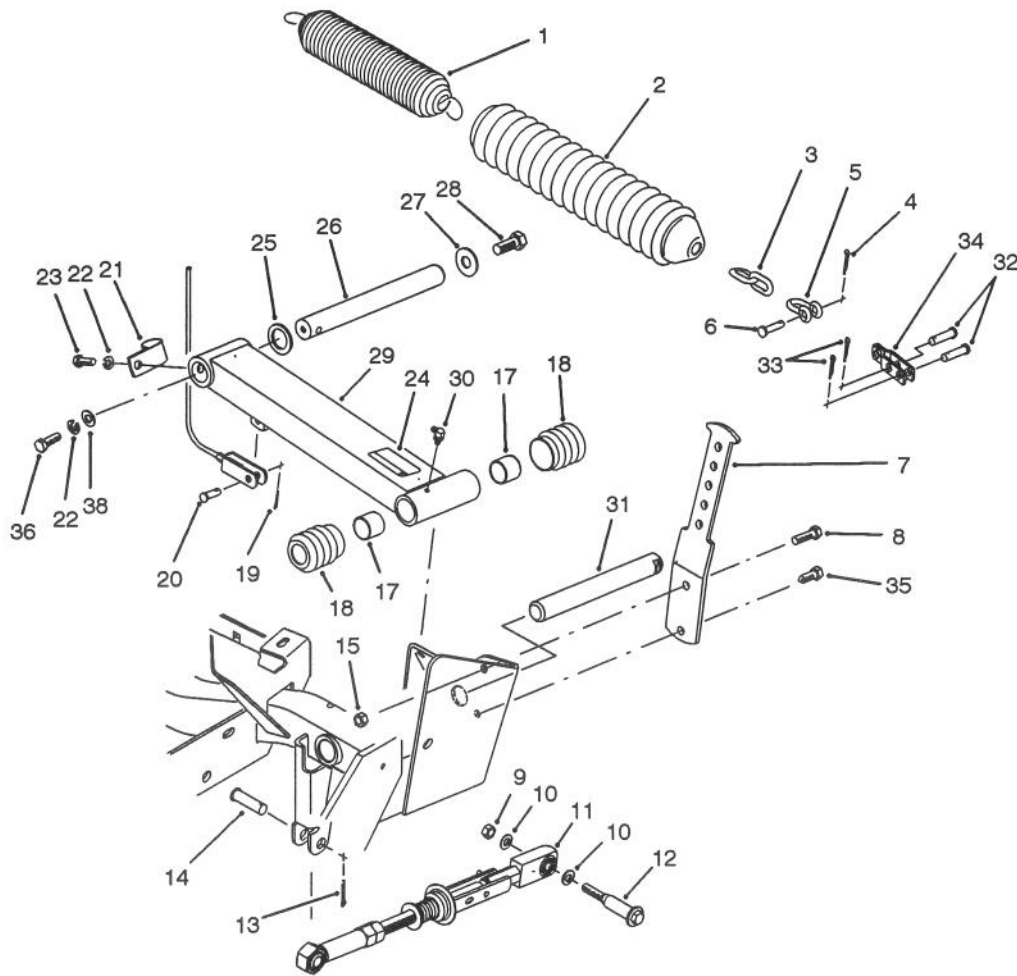
T-1419

FRONT CUTTING UNIT LIFT ARM ASSEMBLY

Ref. No.	Part No.	Description	No. Used
1	3229-1	Bolt - Carriage	2
2	76-2430	Scraper - Pulley	2
3	283-40	Pin - Clevis	2
4	32128-33	Nut - Flange Lock	2
5	61-7250	Boot	4
6	61-3270	Spring - Compression	2
7	3-0348	Bushing - Sleeve	4
8	16-1159	Lift Arm Assembly L.H. (Incl. Ref. #7, 9 & 16)	1
*	16-1169	Lift Arm Assembly R.H. (Incl. Ref. #7, 9 & 16)	1
9	55-4300	Decal - Warning	2
10	322-4	Screw - Cap Hex. Hd.	2
11	3253-4	Washer - Lock	2
12	256-115	Washer - Thrust	2
13	92-1815	Rod - Pivot	2
14	3234-32	Screw - Hex. Flange Hd.	2

Ref. No.	Part No.	Description	No. Used
15	3256-6	Washer - Flat	2
16	302-60	Fitting - Grease	2
17	5-0743	Spring - Extension	2
18	3296-59	Nut - Lock	2
19	3256-45	Washer - Flat	4
20	283-75	Pin - Clevis	4
22	3272-10	Pin - Cotter	4
23	76-0370	Bolt - Shoulder	2
24	83-7900	Belt Tensioner Assembly	2
25	92-1812	Shaft - Lift Pivot	2
26	92-1822	Shackle	2
27	3272-13	Pin - Cotter	2
28	323-7	Screw - Cap Hex. Hd.	2
29	92-1818	Arm - Tension	2
31	3296-39	Nut - Lock	2
32	32104-6	Screw - Cap Hex. Hd.	2

*Not Illustrated

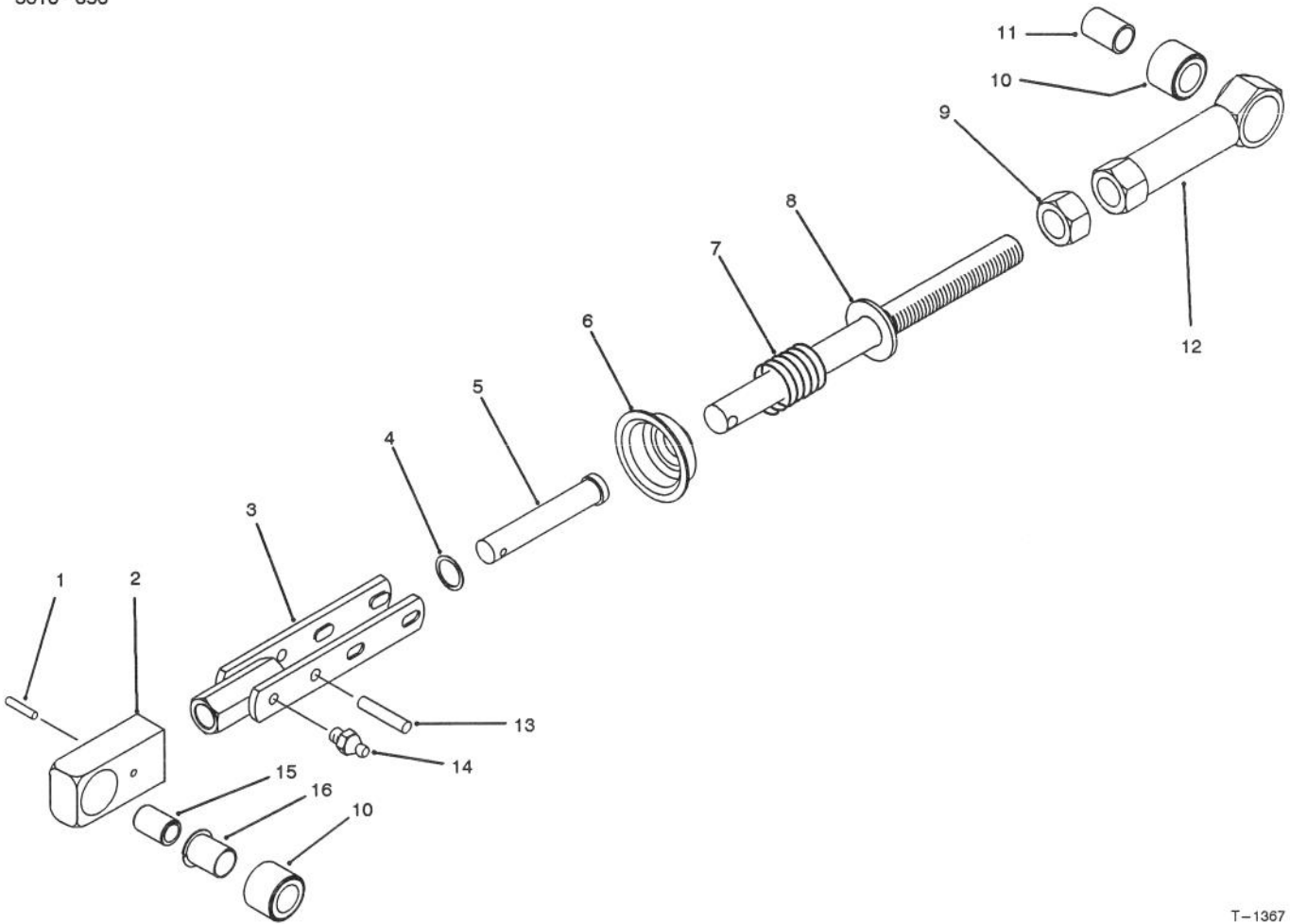


T-1366A

REAR CUTTING UNIT LIFT ARM ASSEMBLY

Ref. No.	Part No.	Description	No. Used
1	5-0743	Spring - Extension	1
2	62-7240	Cover - Spring	1
3	62-7300	Chain	1
4	3272-11	Pin - Cotter	1
5	282-4	Clevis	1
6	283-6	Pin - Clevis	1
7	92-1818	Arm - Tension	1
8	323-7	Screw - Cap Hex. Hd.	1
9	3296-59	Nut - Lock	2
10	3256-45	Washer - Flat	4
11	83-7900	Belt Tensioner Assembly	2
12	76-0370	Bolt - Shoulder	2
13	3272-13	Pin - Cotter	2
14	283-40	Pin - Clevis	2
15	3296-39	Nut - Lock	1
17	3-0348	Bushing - Sleeve	2
18	62-7250	Boot	2
19	3272-6	Pin - Cotter	1
20	283-1	Pin - Clevis	1

Ref. No.	Part No.	Description	No. Used
21	18-2970	Clamp - R	1
22	3253-4	Washer - Lock	2
23	322-4	Screw - Cap Hex. Hd.	1
24	55-4300	Decal - Warning	1
25	256-115	Washer - Thrust	1
26	92-1815	Rod - Pivot	1
27	3256-6	Washer - Flat	1
28	3234-32	Screw - Cap Hex. Hd.	1
29	16-1089	Lift Arm Assembly (Incl. Ref. #17, 24 & 30)	1
30	302-60	Fitting - Grease	1
31	92-1812	Shaft - Lift Pivot	1
32	283-75	Pin - Clevis	2
33	3272-10	Pin - Cotter	2
34	92-1822	Shackle	1
35	32104-6	Screw - Cap Hex. Hd.	1
36	322-26	Screw - Cap Hex. Hd.	1
38	3256-57	Washer - Flat	1



T-1367

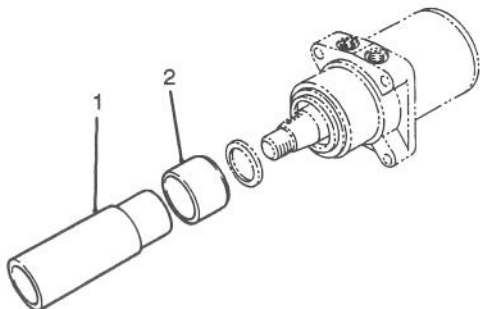
BELT TENSIONER ASSEMBLY NO. 83-7900

Ref. No.	Part No.	Description	No. Used
1	32121-23	Pin - Roll	1
2	76-0350	Housing - Bushing	1
3	83-7930	Yoke	1
4	3256-54	Washer - Flat	1
5	283-55	Pin - Clevis	1
6	76-0360	Cup - Retainer	1
7	76-0410	Spring - Compression	1
8	83-7910	Rod	1

Ref. No.	Part No.	Description	No. Used
9	3218-6	Nut - Jam	1
10	56-9510	Bushing Assembly	2
11	256-173	Bushing - Sleeve	1
12	76-0300	Housing - Bushing	1
13	32121-9	Pin - Roll	1
14	302-5	Fitting - Grease	1
15	76-0390	Spacer	1
16	56-9520	Bushing - Nyliner	1

SPECIAL TOOLS

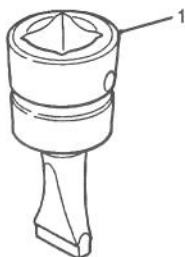
DRIVE MOTOR SEAL INSTALLATION TOOL NO. *19-2660



T-0728

Ref. No.	Part No.	Description	No. Used
1		Driver - Seal	1
2		Holder - Seal	1

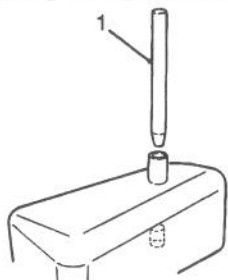
BEDKNIFE SCREW TOOL NO. *TOR510880



T-0729

Ref. No.	Part No.	Description	No. Used
1		Tool - Bedknife Screw	1

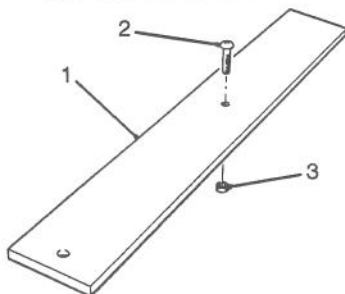
HYDRAULIC OIL RESERVOIR PLUG NO. *88-9220



T-1213

Ref. No.	Part No.	Description	No. Used
1		Plug - Reservoir	1

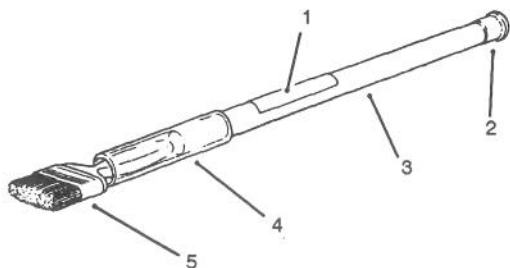
GAUGE BAR ASSEMBLY NO. *TOR138199



T-1151

Ref. No.	Part No.	Description	No. Used
1	65-8320	Bar - Height-Of-Cut	1
2	32122-2	Screw - Round Hd.	1
3	3219-14	Nut - Hex.	1

BACKLAPPING BRUSH ASSEMBLY NO. *TOR299100

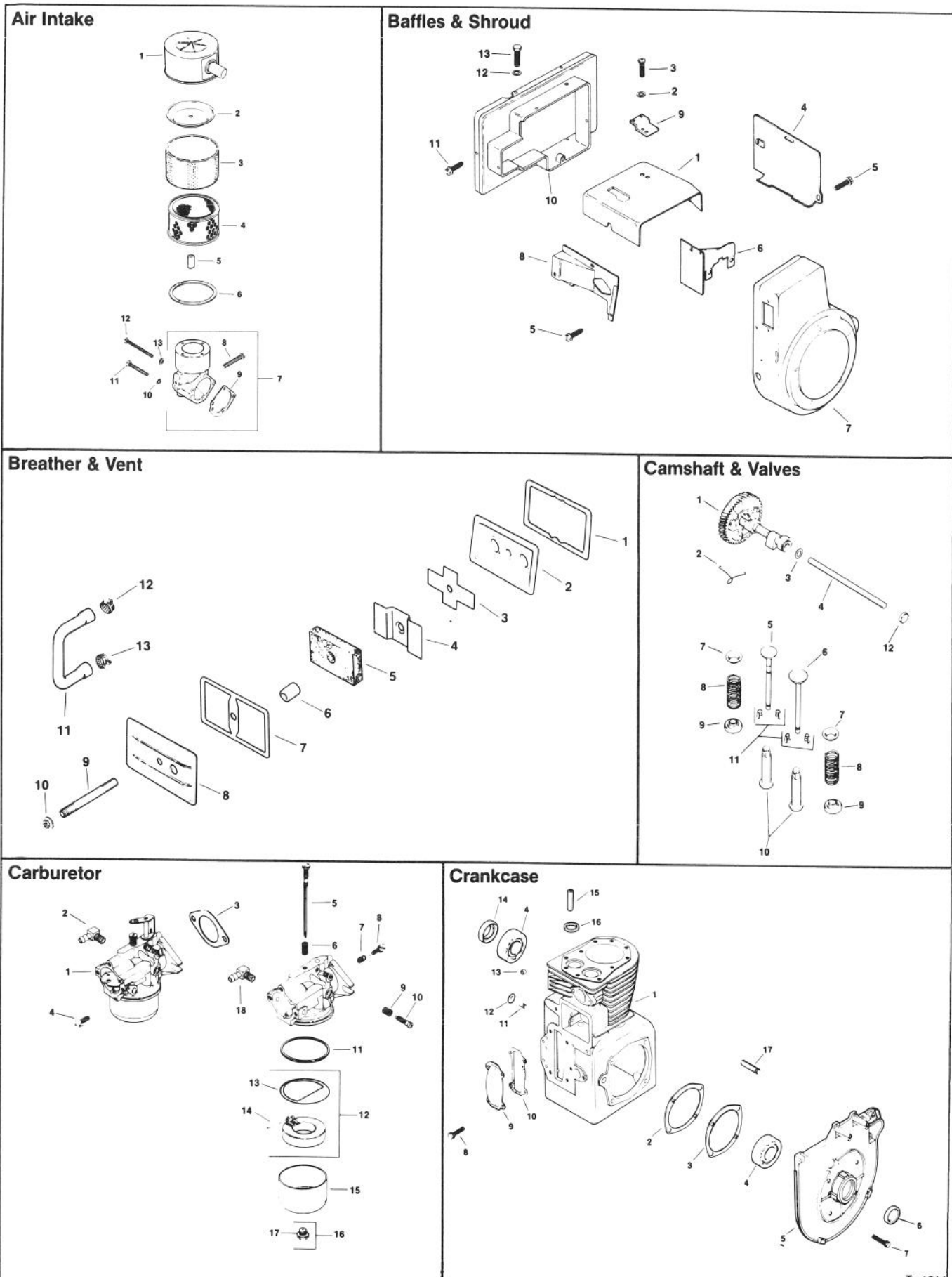


T-0731

Ref. No.	Part No.	Description	No. Used
1	12-9140	Decal	1
2	2410-18	Plug	1
3	29-9080	Handle	1
4	29-9090	Hose - Handle	1
5	36-4310	Brush	1

*Obtain these items directly from OTC 2013 4th St. Owatonna, MN. 55060 1-800-533-0492
(in Minnesota and Canada 1-507-455-7050) Fax. 507-455-7011.

ENGINE KOHLER MODEL NO. M16QS SPEC NO. 711563



T-1214

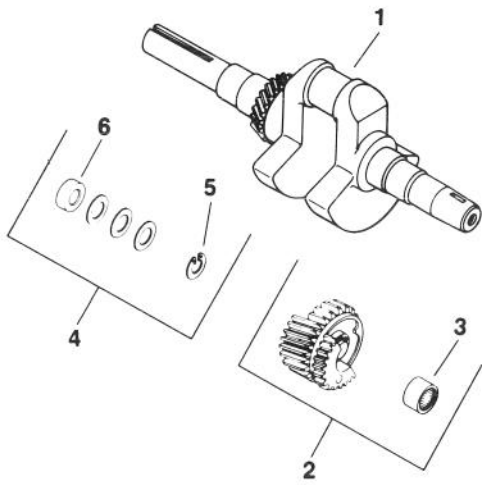
ENGINE KOHLER MODEL NO. M16QS SPEC NO. 711563

Ref. No.	Part No.	Description	No. Used
Air Intake			
1	52 096 26	Cover - Air Cleaner	1
2	52 082 04	Cover - Element	1
3	45 083 01	Precleaner	1
4	45 083 02	Element - Air Cleaner	1
5	231032	Seal	1
6	47 041 11	Gasket - Base	1
7	48 754 03	Kit - Air Cleaner Elbow (Incl. Ref. #8 & 9)	1
8	52 086 11	Screw - Self Tap	1
9	25 041 06	Gasket - Air Cleaner Elbow	1
10	X-22-9	Washer - I.T.L.W.	2
11	X-50-57	Screw - Pan Hd. Mach.	2
12	X-50-37	Screw - Pan Hd. Mach.	1
13	X-25-79	Washer - Plain	1
Baffles & Shroud			
1	45 063 08	Baffle - Head	1
2	X-25-53	Washer - Plain	1
3	47 086 08	Screw - Pozidriv T.H.	1
4	47 063 10	Baffle - Cylinder	1
5	52 086 11	Screw - Hex Wash. Hd.	6
6	47 063 07	Baffle - Inner	1
7	47 027 42	Housing - Blower	1
8	47 063 06	Baffle - Side Air	1
9	47 126 23	Bracket - Duct	1
10	47 755 33	Kit - Air Duct	1
11	X-67-64	Screw - Hex Wash. Hd.	3
12	X-25-20	Washer - Plain	1
13	X-154A	Screw - H.C.	1
Breather & Vent			
1	235048	Gasket - Breather Plate	1
2	235631	Plate - Breather	1
3	235047	Reed - Breather	1
4	235117	Baffle - Breather	1
5	235118	Filter - Breather	1
6	231032	Seal - Breather	1
7	275144	Gasket - Valve Cover	1
8	275839	Cover - Valve	1
9	275220	Stud - Valve Cover	1
10	X-799-1	Palnut	1
11	47 326 02	Hose	1
12	X-426-3	Clamp - Hose	1
13	X-426-9	Clamp - Hose	1
Camshaft & Valves			
1	47 010 11	Camshaft Assembly	1
2	47 089 01	Spring - Actuating	1
3	275066	Spacer .005	A/R
	275067	Spacer.010	A/R
4	47 380 09	Pin - Camshaft	1
5	237672	Valve - Exhaust	1
6	235582	Valve - Intake	1
7	235011	Retainer - Upper Spring	2
8	235168	Spring - Valve	2
9	52 413 01	Rotator - Valve	2
10	D-235327	Tappet	2
11	41 755 10	Kit - Retainer	2
12	X-702-3	Plug - Cup	1

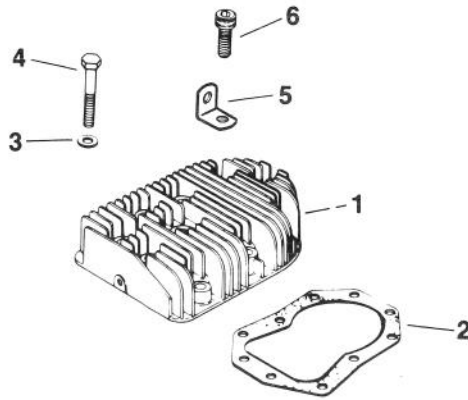
Ref. No.	Part No.	Description	No. Used
Carburetor			
1	45 053 76	Carburetor Assembly (Incl. Ref. #5-18)	1
2	25 155 02	Connector - Hose	1
3	47 049 01	Gasket - Carburetor	1
4	X-770-1	Screw - Slted. Hd.	2
5	45 103 01	Needle - Main Fuel Adj.	1
6	200383	Spring - Main Fuel	1
7	200380	Spring - Idle Fuel	1
8	275231	Needle - Idle Fuel Adj.	1
9	232555	Spring - Idle Speed	1
10	232556	Screw - Idle Speed Adj.	1
11	200375	Gasket - Bowl	1
12	25 757 03	Kit - Float (Incl. Ref. #13)	1
13	25 041 02	Gasket - Bowl Baffle	1
14	200376	Pin - Float Hinge	1
15	235448	Bowl - Fuel	1
16	47 100 06	Screw - Bowl Retainer (Incl. Ref. #17)	1
17	200372	Gasket - Bowl Screw	1
18	X-391-10	Connector - Hose	1
	25 757 02	Kit - Carburetor Repair	1
	25 757 05	Kit - Choke/Throttle Repair	1
Crankcase			
1		Block Cylinder Assembly (Incl. Ref. #13,15,16) (USE: Miniblock 4578233)	1
2	47 422 05	Gasket - Shim	A/R
3	47 041 09	Gasket - Bearing Plate	1
4	235376	Bearing - Ball	2
5	47 146 11	Plate - Bearing	1
6	47 032 06	Seal - Front Oil	1
7	X-159-2	Screw - H.C.	4
8	X-132-6	Screw - H.C.	4
9	235026	Cover - Camshaft	1
10	235025	Gasket - Camshaft Cover	1
11	235125-5	Shaft - Governor Gear	1
12	X-230-11	Plug - Expansion	1
13	234866	Bearing - Gov. Cross Shaft	1
14	47 032 07	Seal - Rear Oil	1
15	230265	Insert - Valve	2
16	235007-5	Guide - Valve	2
17	236559	Shaft - Balance Gear Stub	3

ENGINE KOHLER MODEL NO. M16QS SPEC NO. 711563

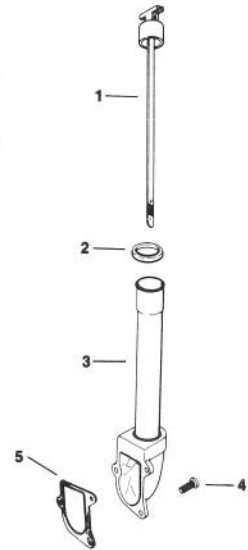
Crankshaft



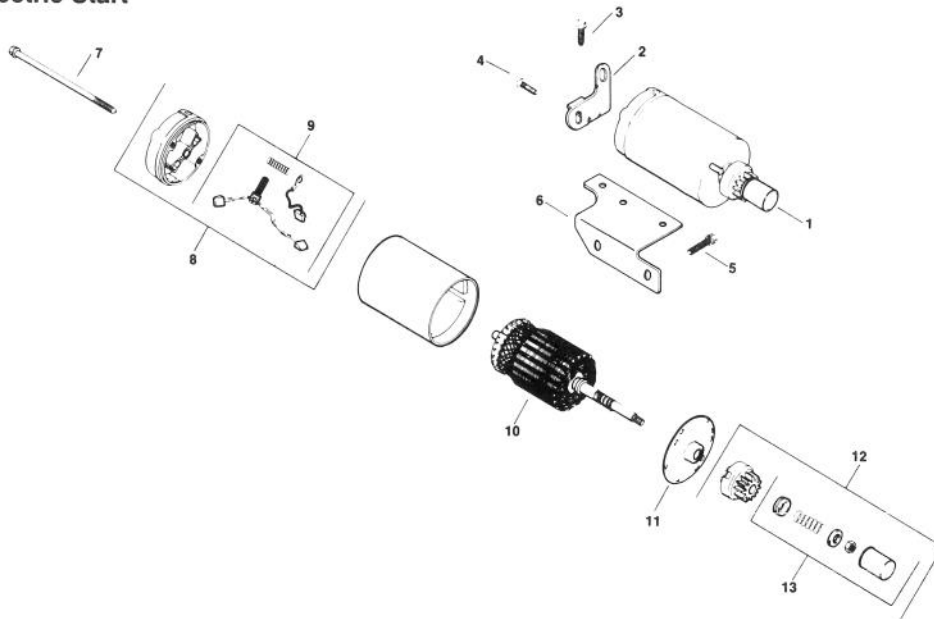
Cylinder Head



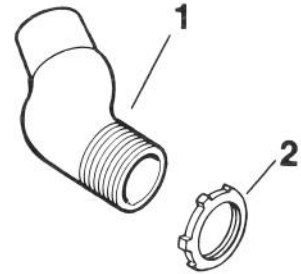
Dipstick



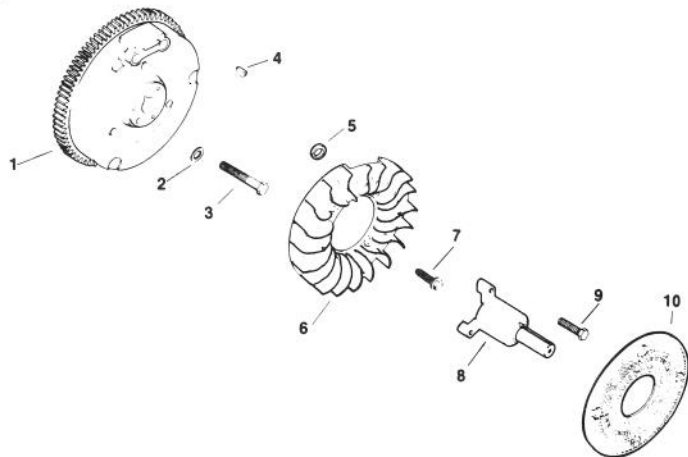
Electric Start



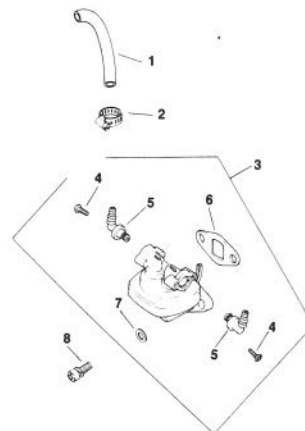
Exhaust



Flywheel



Fuel Pump



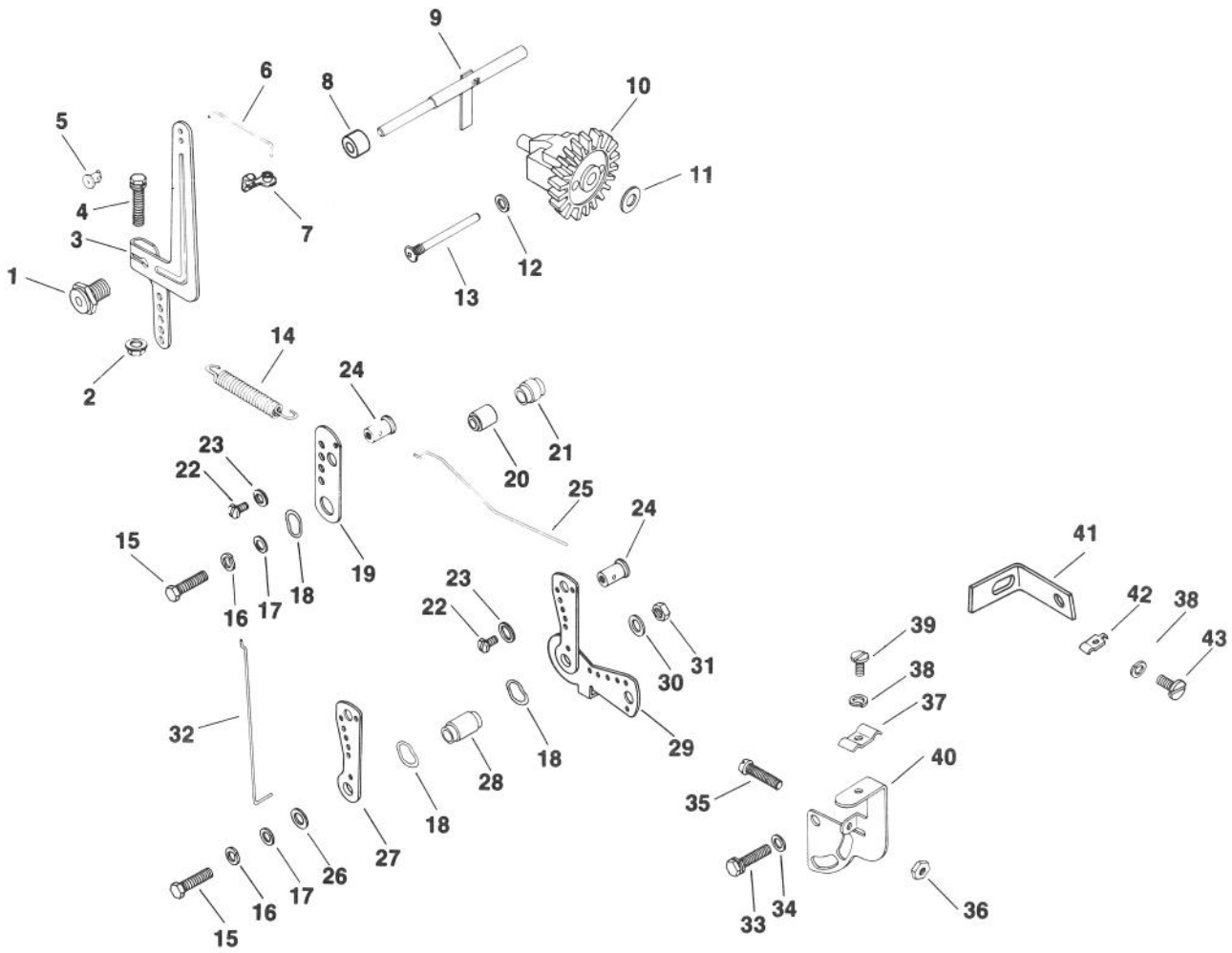
ENGINE KOHLER MODEL NO. M16QS SPEC NO. 711563

Ref. No.	Part No.	Description	No. Used
		Crankshaft	
1	45 014 86	Crankshaft	
2	45 043 03	Gear Assembly (Incl. Ref. #3)	3
3	47 030 01	Bearing – Needle	3
4	47 755 01	Kit – Spacer (Incl. Ref. #5 & 6)	1
5	X-269-34	Retainer	3
6	237769	Spacer	3
		Cylinder Head	
1	45 015 09	Head – Cylinder	1
2	45 041 17	Gasket – Head	1
3	270889	Washer – Plain	10
4	270158	Screw – H.C.	9
5	47 445 02	Strap – Lifting	1
6	47 086 17	Screw – Hex Socket Hd.	1
		Dipstick	
1	47 038 27	Dipstick	1
2	41 153 01	O-Ring	1
3	47 029 06	Adapter – Oil Fill	1
4	X-131-2	Screw – F.H.	3
5	237064	Gasket	1
		Electric Start	
1	41 098 04	Starter Assembly (Incl. Ref. #7-13)	1
2	45 126 17	Brace – Tail	1
3	X-67-83	Screw – Hex Wash. Hd.	1
4	X-67-62	Screw – Hex Wash. Hd.	1
5	X-159-2	Screw – H.C.	2
6	47 126 29	Bracket – Solenoid	1
7	41 086 19	Bolt – Thru	2
8	41 227 04	Cap – Commutator End (Incl. Ref. #9)	1
9	52 755 15	Kit – Brush	1
10	45 170 02	Armature	1
11	41 227 03	Cap – Drive End	1
12	47 755 07	Kit – Drive (Incl. Ref. #13)	1
13	47 755 13	Kit – Drive Parts	1
	25 450 03	Tag – Caution	1
	52 357 01	Lubricant – Starter	

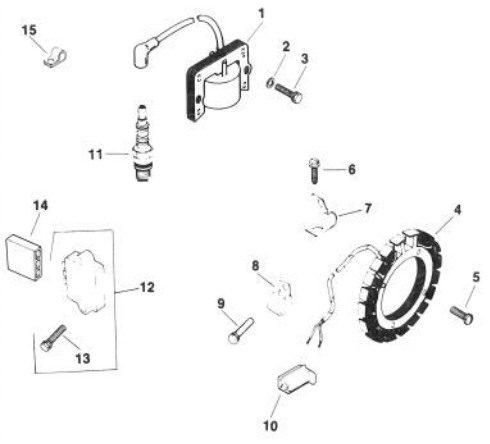
Ref. No.	Part No.	Description	No. Used
		Exhaust	
1	45 054 04	Elbow – Exhaust	1
2	45 100 01	Nut – Lock	1
		Flywheel	
1	47 025 53	Flywheel	1
2	52 468 15	Washer – Plain	1
3	25 086 24	Screw – Hex Mach.	1
4	X-46-3	Key – Woodruff	1
5	25 112 04	Spacer	4
6	25 157 01	Fan	1
7	25 086 21	Screw – Hex Wash. Hd.	4
8	235954	Shaft – Front Drive	1
9	X-159-2	Screw – H.C.	4
10	25 162 03	Screen – Grass	1
		Fuel Pump	
1	25 353 01	Line – Fuel	1
2	X-426-9	Clamp – Hose	2
3	47 559 08	Pump – Fuel Assembly (Incl. Ref. #4-7)	1
4	25 086 35	Screw – Tapping	2
5	25 294 01	Fitting & O-Ring – 90°	2
6	25 041 05	Gasket – Fuel Pump	1
7	X-25-63	Washer – Plain	2
8	X-174-2	Screw – F.H.M.	2

ENGINE KOHLER MODEL NO. M16QS SPEC NO. 711563

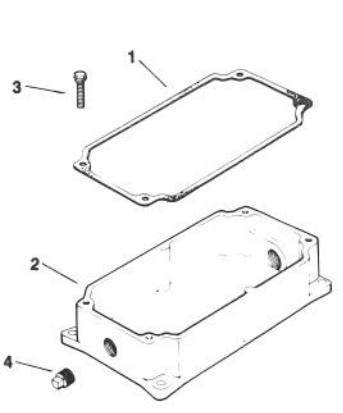
Governor



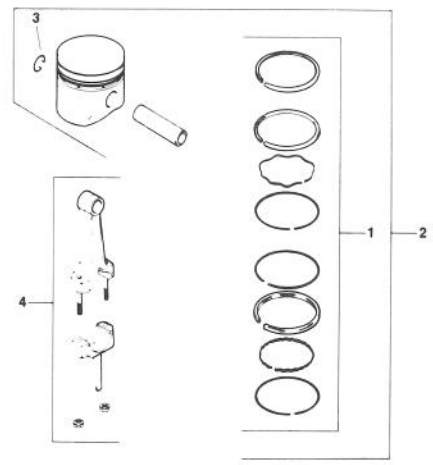
Ignition



Oil Pan



Piston & Rod



ENGINE KOHLER MODEL NO. M16QS SPEC NO. 711563

Ref. No.	Part No.	Description	No. Used	Ref. No.	Part No.	Description	No. Used
		Governor				Ignition	
1	235476	Bushing – Governor	1	1	47 584 02	Module – Ignition	
2	X-799-1	Palnut	1	2	X-25-79	Washer – Plain	2
3	47 090 20	Lever – Governor	1	3	X-156-1	Screw – H.C.	2
4	X-776-1	Screw – H.C.	1	4	237878	Kit – Stator	1
5	25 158 09	Bushing – Linkage Rtng.	1	5	X-67-51	Screw – Hex. Wash. Hd.	4
6	47 079 05	Linkage – Governor	1	6	X-67-59	Screw – Hex. Wash. Hd.	1
7	47 158 07	Bushing – Linkage Rtng.	1	7	X-728-1	Clip (Mounts to Bearing Plate)	1
8	X-400-80	Spacer	1	8	235173	Clip (Mounts to Cylinder Block)	1
9	A-235256-S	Kit – Governor Cross Shaft	1	9	X-132-6	Screw	1
10	A-235743-S	Kit – Governor Gear	1	10	41 155 03	Connector – Male	1
11	237022	Washer – Thrust	1	11	235041-5	Spark Plug RH-10	1
12	25 468 01	Washer – Plain	1	12	25 755 03	Kit – Rectifier-Regulator (Incl. Ref. #13)	1
13	231355	Pin – Governor Stop	1	13	X-132-5	Screw – H.C.	2
14	235496	Spring – Governor	1	14	236602	Connector – Female	1
15	X-5-26	Screw – H.C.	2	15	210281	Clip – Hi-Tension Lead	1
16	X-20-1	Washer – Lock	2		47 518 38	Lead – White, Module to Connector (23" – 18 g. – insulated push on tab – uninsulated push on tab terminals)	1
17	X-25-63	Washer – Plain	2		47 518 46	Lead – Violet, Rectifier Regulator to Connector (12.5" – 14-gauge – uninsulated push on tab terminals)	1
18	275690	Washer – Wave	3			Oil Pan	
19	235086	Bracket – Speed Control	1	1	235057	Gasket – Oil Pan	1
20	235085	Spacer	1	2	47 199 10	Pan-Oil	1
21	X-384-2	Spacer	1	3	X-159-3	Screw – H.C.	4
22	X-51-8	Screw – Sltd. Pan Hd.	1	4	X-75-6	Plug – Sq. Hd. Solid	2
23	X-25-102	Washer – Plain	1			Piston & Rod	
24	48 755 10	Kit – Clamp (Incl. Ref. #22 & 23)	1	1	45 108 10	Ring Set (Std. & .003)	1
25	47 079 08	Linkage – Throttle	1		45 108 11	Ring Set(.010)	1
26	X-25-82	Washer – Plain	1		45 108 12	Ring Set (.020)	1
27	47 090 05	Lever – Choke	1		45 108 13	Ring Set (.030)	1
28	47 112 19	Spacer	1	2	45 874 11	Piston w/Ring Set (Std.)	1
29	47 090 09	Lever – Throttle	1		45 874 12	Piston w/Ring Set (.003)	1
30	X-25-95	Washer – Plain	1		45 874 13	Piston w/Ring Set (.010)	1
31	X-81-1	Nut – Hex	1		45 874 14	Piston w/Ring Set (.020)	1
32	47 079 01	Linkage – Choke	1		45 874 15	Piston w/Ring Set (.030)	1
33	X-132-6	Screw – H.C.	1	3	47 018 01	Retainer – Piston Pin	2
34	X-25-72	Washer – Plain	1	4	45 067 24	Connecting Rod (Std.)	1
35	232556	Screw	1		45 067 25	Connecting Rod (.010)	
36	X-72-4	Nut – Hex	1		45 782 33	Miniblock	1
37	1223701	Clamp – Cable	1		47 004 02	Gasket Set w/o Seals	1
38	X-19-1	Washer – Lock	2		45 755 12	Gasket Set w/Seals	1
39	X-67-38	Screw	1				
40	47 126 13	Bracket – Choke	1				
41	47 126 36	Bracket – Choke	1				
†42	81-1690	Clamp – Cable	1				
43	X-15-5	Screw – F.H.M.	1				

†Available from your local TORO Distributor

TORO PART NUMBER INDEX

Part No.	Description	Pg. Ref. No. No. Qty.	Part No.	Description	Pg. Ref. No. No. Qty.
3-0348	Bushing - Sleeve	30 7 4	28-4210	Solenoid - Starter	15 14 1
3-0348	Bushing - Sleeve	31 17 2	28-6180	Pin	5 47 1
3-6498	Washer - Thrust	3 17 A/R	28-8080	Boot - Battery Terminal	15 6 1
5-0743	Spring - Extension	31 1 1	29-6120	Plate - Pump	20 29 1
5-0743	Spring - Extension	30 17 2	29-6150	Spring - Leaf	20 26 1
5-2653	Cable Pulley Assembly	26 8 1	29-6170	Spring - Extended Leaf	20 27 1
5-2655	Keeper - Cable	26 7 1	29-9080	Handle	33 3 1
5-2656	Keeper - Cable	26 30 1	29-9090	Hose - Handle	33 4 1
5-4723	Spring - Compression	10 31 1	36-4310	Brush	33 5 1
5-7280	Key - Square (Short)	25 16 3	37-9590	Spring	5 21 1
5-7290	Spring - Extension	21 6 1	38-7820	Bearing - Idler	25 3 2
10-4850	Spring - Compression	2 44 2	38-8000	Filter - Fuel	9 5 1
10-6821	Brake Drum Assembly	21 18 2	42-2040	Screw - Hex. Hd. Self Tap	20 23 3
10-6870	Hub - Wheel	21 19 2	43-1950	Valve - Hydraulic	28 19 1
10-6870	Hub - Wheel	4 22 1	43-8600	Spring - Compression	5 29 1
10-7070	Key - Square	12 5 1	43-8610	Guide - Spring & Ball Seat	5 30 1
10-7130	Wire - Battery/Solenoid	11 3 1	43-8620	Guide - Switch Pin	5 25 1
10-8120	Bolt - Battery	15 8 2	43-8860	Plunger - Switch	5 26 1
11-0590	Screw - Thread Forming	26 17 4	43-8870	Boot - Switch	5 20 1
11-0590	Screw - Cap Hex. Hd.	15 20 2	44-2212	Lamp - Pilot	10 3 1
12-3270	Screw - Cap Hex. Hd.	12 30 4	44-8310	Ring - Retaining	13 3 2
12-9140	Decal	33 1 1	44-8320	Spring - Compression	13 10 3
13-1279	Idler Pulley Assembly	25 * 1	44-8330	Spacer - Pulley Bearing	13 6 1
16-1089	Lift Arm Assembly	31 29 1	44-8350	Field Assembly	13 1 1
16-1159	Lift Arm Assembly L.H.	30 8 1	44-8360	Field Coil, Rotor & Bearing	13 4 1
16-1169	Lift Arm Assembly R.H.	30 * 1	46-8400	Bearing - Needle	18 42 1
18-2970	Clamp - R	31 21 1	46-8810	Stop - Spring	20 4 1
21-0141	Rod End Assembly	3 15 1	47-2980	Hose - Fuel	9 3 1
21-0151	Rod End Assembly	4 30 1	47-2988	Hose - Fuel	9 7 1
22-8330	Plug	29 1 2	48-1800	Cylinder Block Kit	18 5 1
22-8340	Spring	29 3 2	49-2040	Screw - Tapping	12 13 5
22-8350	Ball	29 4 2	49-8480	Shaft - Trunion	18 12 1
22-8360	Pin - Cam	29 6 2	49-8510	Kit - Charge Relief	19 * 1
22-8370	Seat - Check Valve	29 5 2	49-8520	Kit - Implement Relief	19 * 1
22-8380	Retainer - Spring	29 10 2	51-3150	Shim - Spring Arm	20 28 1
22-8410	Spring	29 11 1	54-0110	Filter - Oil	17 28 1
22-8420	Spool	29 8 1	55-3570	Cap - Fuel	9 11 1
22-8480	Snap Ring - Spool	29 13 1	55-4300	Decal - Warning	30 9 2
22-8490	Snap Ring	29 14 1	55-4300	Decal - Warning	31 24 1
22-8500	O-Ring	29 9 2	56-2230	Hose - Fuel	9 9 1
23-0660	Switch - Key	10 19 1	56-7976	Clamp - Hose	4 6 2
23-3030	Spacer	29 12 1	56-7976	Clamp - Tube	23 11 2
23-8910	Fitting - 90 Hose Elbow	17 26 2	56-7982	Sleeve - Protective	16 * 1
25-2380	Plate - Thrust	18 39 1	56-9510	Bushing Assembly	32 10 2
25-2390	Plate - Valve	18 40 1	56-9520	Bushing - Nylon	32 16 1
25-2400	Gasket	18 43 1	57-3210	Screw - Hex. Washer Hd.	1 32 2
25-2430	Pin - Straight	18 41 1	59-9810	Module - Ignition	12 16 1
25-2450	Swash/Plate	18 37 1	61-0020	Shroud - Muffler	12 31 1
25-2460	Plug	18 14 2	61-0030	Tank - Fuel	9 10 1
25-2470	Kit - Shim Pack	18 16 2	61-0070	Pulley - Poly V	25 28 1
25-2480	Spring - Charge Relief	18 32 1	61-0100	Tank - Hydraulic	15 24 1
25-2490	Ball - Check Valve	18 47 2	61-0140	Pulley - Jackshaft	25 22 3
25-2510	Washer	18 11 2	61-2070	Rod - Steering	3 13 1
25-2530	Pin - Straight	18 26 1	61-2070	Rod - Steering	4 28 1
25-2570	Spring - Relief Valve	18 17 1	61-2090	Steering Column Assembly	3 8 1
25-2630	Ring	18 3 1	61-2120	Bracket - Air Cleaner	12 6 1
25-2640	Spring - Check Valve	18 48 2	61-2220	Spacer	9 20 4
25-2650	Plug - Check Valve	18 49 2	61-2230	Plate - Pump Mount	17 13 1
25-2680	Gerotor Assembly	18 25 1	61-2350	Mount - Bearing	25 27 2
25-3180	Kit - Check Valve	19 * 1	61-2430	Hub - Lift	26 45 1
25-3210	Seal - Lip	18 10 2	61-2490	Hose - Hydraulic	26 42 1
26-3790	Nut - Lock	4 21 1	61-2490	Hose Assembly	14 2 1
26-3790	Nut - Lock	21 23 2	61-2500	Hose - Hydraulic	26 41 1
27-9870	Pin - Seat Spring	5 28 1	61-2500	Hose Assembly	14 1 1
28-0120	Bracket - Hinge L.H.	1 19 1	61-2510	Hose Assembly	14 15 1
28-0130	Bracket - Hinge R.H.	2 42 1	61-2510	Hydraulic Hose Assy. (Low)	28 20 1
28-3670	Shaft - Trunion	18 28 1	61-2520	Hose Assembly	14 13 1

*Not Illustrated

TORO PART NUMBER INDEX (Cont.)

3316-356

Part No.	Description	Pg. No.	Ref. No.	Qty.	Part No.	Description	Pg. No.	Ref. No.	Qty.
61-2520	Hydraulic Hose Assy. (Up)	28	12	1	65-4620	Seal - O-Ring	24	12	1
61-2540	Hose - Hydraulic	17	8	1	65-4640	Key - Square	21	10	2
61-2540	Hose Assembly	14	17	1	65-4640	Key - Woodruff	4	15	1
61-2550	Hose - Hydraulic	17	27	1	65-4670	Body & Bearing Assembly	24	9	1
61-2550	Hose Assembly	14	16	1	65-4680	Cover & Bearing Assembly	24	2	1
61-2610	Arm - Traction	20	14	1	65-8320	Bar - Height-Of-Cut	33	1	1
61-2660	Wire - Solenoid/Starter	11	1	1	66-0120	Knob	10	2	2
61-2670	Wire - Ground	11	2	1	66-5291	Hydraulic Motor Assembly	4	24	1
61-2680	Weight - Standard	9	14	1	66-5291	Hydraulic Motor Assembly	21	30	2
61-2710	Fitting - 90 Hose Elbow	17	6	1	66-5340	Grille - Front	2	38	1
61-2720	Bracket - Lever	28	13	1	66-6110	IGR Assembly	24	5	1
61-2790	Screen - Filler	15	27	1	66-6120	Pad-Foot	1	27	1
61-2940	Lever-Pump	20	31	1	66-6840	Decal - Hot	15	25	1
61-3070	Tube - Hyd. L.H. (Rear)	17	25	1	66-6840	Decal - Hot	12	47	1
61-3070	Tube Assembly	14	19	1	67-7490	Key - Square (Long)	25	18	1
61-3080	Tube - Hyd. L.H. (Front)	17	24	1	67-7750	Pulley - Idler	25	4	1
61-3080	Tube Assembly	14	20	1	67-7870	Idler Bracket W.A.	25	11	1
61-3210	Cable Pulley Assembly	26	22	3	67-7890	Belt Tensioner W.A.	25	6	1
61-3230	Spacer	26	24	3	67-7911	Strap - Idler Bracket	25	2	1
61-3240	Keeper - Cable	26	21	1	67-8020	Shaft - Pump	18	6	1
61-3260	Cable - Lift	26	19	1	67-8030	Plug Assembly	18	19	2
61-3270	Spring - Compression	30	6	2	67-8040	O-Ring	18	20	2
61-3310	Plate - Toro Logo	9	13	1	67-8050	Bearing - Needle	18	22	1
61-3320	Pulley- Pump	17	17	1	67-8060	Seal - Lip	18	23	1
61-3340	Bushing - Taper	12	46	1	69-9760	Cover - Plate	23	10	1
61-3350	Bushing - Taper	17	19	1	69-9760	Plate - Cover	4	4	1
61-3390	Belt - Poly-V	12	25	1	70-7080	Spacer - Clutch	12	18	1
61-3470	Hose	12	11	1	70-8020	Clutch Assembly	12	21	1
61-3550	Valve - Ball	9	8	1	70-8030	Key	12	36	1
61-3770	Head - Filter	17	29	1	70-8040	Washer - Flat	12	22	1
61-3830	Chain - Lift	26	33	2	70-8150	Plate - Valve	24	7	1
61-3840	Decal - Reelmaster 216	5	16	2	70-9840	Shoe - Brake	21	16	4
61-3880	Panel - Access R.H.	5	52	1	70-9850	Clip - Retaining	21	35	2
61-3990	Parking Brake Assembly	21	5	1	70-9860	Pin - Pivot Brake	21	25	2
61-7250	Boot	30	5	4	70-9870	Plate - Brake	21	27	2
62-4290	O-Ring	18	44	2	70-9880	Spring - Extension	21	17	4
62-5140	Weight - 8 Blade	9		1	71-0710	Hydraulic Tube Assembly	7	3	1
62-5250	Armature & Pulley Assembly	13	5	1	71-0710	Tube Assembly	14	12	1
62-5330	Bracket - Side Panel	5	7	1	71-0770	Fitting	28	7	
62-5400	Hood Assembly	1	5	1	71-0840	Hydraulic Tube Assembly	7	6	1
62-7170	Spacer	5	39	1	71-0840	Tube Assembly	14	11	1
62-7190	Spacer	1	30	1	71-0850	Tube Assembly	14	7	1
62-7240	Cover - Spring	31	2	1	71-0850	Tube Assembly	23	8	1
62-7250	Boot	31	18	2	71-0860	Tube Assembly	28	9	1
62-7300	Chain	31	3	1	71-0860	Tube Assembly	14	25	1
62-7320	Stop - Traction Pedal	1	9	1	71-0870	Tee - Tube Assembly	23	1	2
62-7350	Slide - Pedal Stop	1	11	2	71-0870	Tube Assembly	14	3	2
62-7400	Decal - Toro Logo	1	4	1	71-0880	Tube Assembly	23	2	1
63-4880	Hose Assembly	14	14	1	71-0880	Tube Assembly	14	5	1
63-4880	Hydraulic Hose Assembly	16	18	1	71-0910	Tube Assembly	14	4	1
63-4890	Hose Assembly	14	9	1	71-0910	Tube Assembly	23	12	1
63-4890	Hydraulic Hose Assembly	16	15	1	71-1370	Spring - Compression	26	35	1
63-5080	Pressure Sequence Valve	16	12	1	71-1380	Pin - Spring	26	34	1
63-5400	Exchanger - Heat	16	30	1	71-1500	Brake Assembly	22	*	2
63-8360	Key	10	9	1	71-2960	Valve - Flow Control	23	6	1
63-8770	Fitting - 45 Orifice	16	11	1	72-4150	Shield - Heat	1	24	1
63-8790	Cartridge Valve Assembly	16	10	1	72-4190	Pin - Cylinder Guide	26	12	1
63-8800	Seal Kit	16	*	1	72-4320	Switch - Neutral	5	31	1
63-8940	Shield - Cooler	16	17	1	72-4350	Panel - Access L.H.	5	19	1
65-4500	Seal - Snap Ring	24	14	1	72-4360	Footrest - L.H.	1	29	1
65-4550	Valve - Check Ball	24	6	2	72-4790	Clamp - Battery	15	2	1
65-4560	Plug - Hex (Hollow)	24	3	1	72-9540	Bracket - Heat Shield	1	23	1
65-4570	Seal - Square Ring	24	4	2	74-0720	Tube - Manual	5	45	1
65-4580	Screw - Cap Hex Hd.	24	1	8	74-9100	Pad - Pedal Forward	20	7	1
65-4590	Ring - Snap	24	21	1	74-9110	Pad - Pedal Reverse	20	11	1
65-4600	Washer - Thrust	24	19	2	75-6820	Meter - Hour	10	1	1
65-4610	Bearing - Thrust	24	20	1	75-7730	Spacer	4	2	1

*Not Illustrated

TORO PART NUMBER INDEX (Cont.)

Part No.	Description	Pg. No.	Ref. No.	Qty.	Part No.	Description	Pg. No.	Ref. No.	Qty.
75-9260	Support - Hydraulic Tank	5	2	1	83-9310	Pivot - Brake R.H.	21	*	1
75-9310	Latch - Hood	1	6	1	83-9330	Shaft - Brake	21	41	1
75-9320	Bushing - Hood Latch	10	33	1	83-9340	Shield - Grass	21	13	2
75-9330	Pin - Hood Latch	10	30	1	83-9350	Rod - Parking Brake	21	1	1
76-0020	Hydraulic Cylinder Assembly	26	37	1	83-9460	Tube - Hydraulic	7	13	1
76-0030	Repair Kit	27	*	1	83-9500	Tube - Hydraulic	7	12	1
76-0040	Piston	27	8	1	83-9550	Decal - Warning	5	44	1
76-0050	Ring - Retaining	27	12	1	83-9690	Spring - Compression	25	9	1
76-0070	Bracket - Interlock Module	12	15	1	83-9730	Step - Foot	5	18	1
76-0080	Collar - Bearing	13	7	1	83-9800	Shield - Front Grass L.H.	1	33	1
76-0090	Head	27	3	1	83-9810	Bushing - Flange	25	10	1
76-0130	Hood Stop Chain Assembly	1	22	1	84-1650	Decal - Brake	1	28	1
76-0190	Cap - Oil	15	31	1	84-1830	Cap - Battery Vent	15	32	1
76-0200	Oil Cap Assembly	15	*	1	84-1840	Grille - Muffler	12	37	1
76-0220	Foam - Oil Filter	15	30	1	84-1850	Muffler	12	26	1
76-0240	Dipstick Assembly	15	29	1	84-1990	Rod - Adjusting	21	32	2
76-0300	Housing - Bushing	32	12	1	84-2000	Bracket - Brake	21	29	2
76-0350	Housing - Bushing	32	2	1	84-8440	Bushing - Flange	26	11	2
76-0360	Cup - Retainer	32	6	1	85-5160	Lever - Valve	28	2	1
76-0370	Bolt - Shoulder	31	12	2	85-5230	Bracket - Seat Pivot	6	53	2
76-0370	Bolt - Shoulder	30	23	2	85-5330	Plate - Seat	5	14	1
76-0390	Spacer	32	15	1	85-5340	Tube - Pivot	5	48	2
76-0410	Spring - Compression	32	7	1	85-6540	Stud - Drive	4	16	4
76-0420	Rod - Pump Control	20	9	1	85-6540	Stud - Drive	21	26	8
76-0440	Battery Support W.A.	15	10	1	88-8220	Valve - By-Pass	18	4	1
76-0500	Cover - Reservoir Support	5	41	1	88-9550	Decal - Service Information	5	34	1
76-1420	Wheel - Steering	3	10	1	92-1157	Shaft	24	10	1
76-2170	Pedal - Traction	20	8	1	92-1810	Arm - Torque	12	19	1
76-2200	Footrest - Traction	1	12	1	92-1812	Shaft - Lift Pivot	30	25	2
76-2220	Adjustment Yoke Assembly	17	36	1	92-1812	Shaft - Lift Pivot	31	31	1
76-2260	Pad - Footrest	1	13	1	92-1813	Spacer - Torque Arm	12	20	1
76-2320	Shaft	27	4	1	92-1814	Spacer - Torque Arm	12	51	1
76-2330	Nut - Lock	27	5	1	92-1815	Rod - Pivot	30	13	2
76-2350	Seal/Retainer Assembly	24	*	1	92-1815	Rod - Pivot	31	26	1
76-2360	Body Seal Kit	24	*	1	92-1818	Arm - Tension	31	7	1
76-2430	Scraper - Pulley	30	2	2	92-1818	Arm - Tension	30	29	2
76-2460	Bearing Assembly	25	25	2	92-1819	Pulley - Engine	12	45	1
76-2520	Hose Assembly	14	6	2	92-1820	Frame Assembly	3	19	1
76-2520	Hydraulic Hose	17	1	2	92-1821	V-Belt - Pump	17	16	1
76-2530	Hose Assembly	14	8	1	92-1822	Shackle	30	26	2
76-2530	Hydraulic Hose Assembly	16	1	1	92-1822	Shackle	31	34	1
76-2540	Hose Assembly	14	22	1	92-1840	Bracket - Cylinder & Cooler	26	1	1
76-2540	Hose Assembly - Hyd.	17	38	1	92-1841	Nut - Hood Pivot	2	41	2
76-2550	Hose Assembly	14	21	1	92-2406	Hose Assembly	14	24	1
76-2550	Hose Assembly	17	44	1	92-2406	Hydraulic Hose Assembly	16	32	1
77-0480	Screw - Traction Stop	2	45	1	92-2407	Hose Assembly	14	18	1
80-3940	Clip - Rosebud	5	50	1	92-2407	Hydraulic Hose Assembly	16	28	1
80-4080	Hydraulic Hose Assembly	4	36	1	92-2408	Hose - Hydraulic	17	12	1
80-4080	Tube Assembly	14	10	1	92-2408	Hose Assembly	14	26	1
80-4090	Hose - Hydraulic	7	5	2	92-3162	Bushing - Flange	3	4	4
80-4090	Hose - Hydraulic	4	14	2	92-3165	Steering Shaft & Gear	3	5	1
80-4090	Hose Assembly	14	23	2	92-3172	Rack - Steering	3	16	1
80-4110	Control - Throttle	10	23	1	92-3177	Decal - Instrument Panel	10	12	1
80-4120	Control - Choke	10	22	1	92-3179	Decal - Control	7	10	1
80-4240	Footrest R.H.	1	14	1	92-3180	Panel	5	42	1
82-4640	Battery - 12 Volt	15	7	1	92-3189	Panel - Instrument	5	10	1
83-7260	Cone - Relief Valve	18	18	2	92-3191	Diode - Circuit Board	11	4	1
83-7270	Fork - Caster	4	10	1	92-3194	Switch - Clutch	10	20	1
83-7820	Shaft - Drive	25	20	1	92-3195	Knob	10	26	1
83-7900	Belt Tensioner Assembly	31	11	2	92-3196	2 Position Valve Assembly	7	2	1
83-7900	Belt Tensioner Assembly	30	24	2	92-7901	Wire Harness Assembly	11	5	1
83-7910	Rod	32	8	1	92-7904	Cap - Valve	8	1	1
83-7930	Yoke	32	3	1	92-7905	Lift Switch Assembly	26	4	1
83-8860	Shield - Front R.H.	2	35	1	92-7905	Neutral Switch Assembly	20	5	1
83-9130	Keeper - Cable	26	48	1	92-7906	Switch - Lift	26	49	1
83-9250	Lever - Brake	21	36	2	92-7906	Switch - Neutral	20	34	1
83-9270	Pivot - Brake L.H.	21	40	1	92-7907	Plug Assembly	8	2	1

*Not Illustrated

TORO PART NUMBER INDEX (Cont.)

3316-356

Part No.	Description	Pg. No.	Ref. No.	Qty.	Part No.	Description	Pg. No.	Ref. No.	Qty.
92-7908	Washer - Valve	8	4	1	242-76	Rim	4	18	1
92-7909	Stop - Valve	8	13	1	2410-18	Plug	33	2	1
92-7911	Boot	8	10	1	2411-52	Bear - Rod End R.H.	20	12	1
92-7912	Retainer - Boot	8	14	1	2411-53	Bearing - Rod End L.H.	20	1	1
92-7913	Seal Repair Kit	8	*	1	2412-24	Clamp - Hose	17	10	6
92-7940	Housing - Charge Pump	18	21	1	2412-36	Clamp - Hose	9	4	6
92-8776	Plug Assembly	19	52	2	2412-41	Clamp - R	12	38	1
92-8777	Seal - O-Ring	18	51	2	2412-71	Clamp - R	5	37	1
92-9023	Hydraulic Pump Assembly	18	8	1	2412-81	Clamp - R	16	25	2
92-9023	Pump Assembly	17	5	1	2412-92	Clamp - Hose	12	10	2
217-60	Rim	21	21	2	2412-113	Clamp-R	28	10	1
218-461	Nut	10	10	1	2412-114	Clamp	4	34	1
218-461	Nut - Jam	5	22	2	2412-133	Clamp - R	5	46	2
218-489	Fuse Holder Assembly	10	14	1	251-8	Bearing - Ball	18	35	1
218-535	Nut	10	18	1	251-77	Collar - Locking	25	23	2
218-536	Washer - Lock	10	17	1	251-259	Bearing - Ball	20	32	1
218-562	Lens	10	5	1	251-291	Bearing - Pulley	13	8	2
219-18	Bulb- Light (GE #1893)	10	4	1	251-292	Bearing - Field	13	2	1
2112-9	Clamp - Muffler	12	27	1	251-337	Bearing	25	29	2
231-127	Tire	4	17	1	252-82	Bearing - Needle	18	9	2
231-127	Tire	21	20	2	256-1	Bushing - Sleeve	26	23	3
232-27	Valve - Stem	21	24	2	256-2	Bushing - Sleeve	26	44	1
232-47	Tube - Inner	4	20	1	256-27	Bushing - Sleeve	3	6	2
233-17	Knob	10	34	1	256-115	Washer - Thrust	30	12	2
233-37	Knob	28	1	1	256-115	Washer - Thrust	31	25	1
233-46	Knob	8	11	1	256-173	Bushing - Sleeve	32	11	1
237-7	Seal - O-Ring	5	24	1	256-245	Bushing - Flange	3	18	2
237-21	O-Ring	28	16	2	256-247	Bushing - Flange	3	1	2
237-21	Seal - O-Ring	22	47	3	256-287	Bushing - Flange	3	2	2
237-22	O-Ring	18	2	1	256-321	Bushing - Flange	3	20	4
237-22	O-Ring	28	8	2	2710-16	Link - Chain	28	5	1
237-22	Seal - O-Ring	8	3	1	282-2	Clevis	21	34	2
237-22	Seal - O-Ring	7	4	2	282-4	Clevis	31	5	1
237-22	Seal - O-Ring	16	6	5	282-4	Clevis	26	31	4
237-22	Seal - O-Ring	4	13	2	283-1	Pin - Clevis	31	20	1
237-22	Seal - O-Ring	26	40	2	283-1	Pin - Clevis	21	37	2
237-30	O-Ring	17	2	12	283-2	Pin - Yoke	17	47	1
237-30	O-Ring	23	3	4	283-6	Pin - Clevis	31	6	1
237-30	O-Ring	28	11	1	283-6	Pin - Clevis	26	14	4
237-30	O-Ring	17	40	3	283-40	Pin - Clevis	30	3	2
237-30	Seal - O-Ring	16	2	8	283-40	Pin - Clevis	31	14	2
237-30	Seal - O-Ring	21	7	4	283-42	Pin - Clevis	26	9	1
237-30	Seal - O-Ring	7	7	4	283-55	Pin - Clevis	32	5	1
237-30	Seal - O-Ring	5	32	1	283-75	Pin - Clevis	30	20	4
237-37	Bumper - Rubber	5	17	2	283-75	Pin - Clevis	31	32	2
237-42	O-Ring	29	2	2	283-78	Pin - Clevis	26	36	1
237-42	O-Ring	23	5	2	283-79	Pin - Clevis	26	29	1
237-42	O-Ring	28	6	1	285-17	Plug - Pipe	18	1	2
237-42	Seal - O-Ring	26	38	2	302-5	Fitting - Grease	3	3	4
237-71	O-Ring	15	28	1	302-5	Fitting - Grease	4	3	1
237-78	O-Ring	28	14	2	302-5	Fitting - Grease	32	14	1
237-78	Seal - O-Ring	4	38	1	302-5	Fitting - Grease	25	26	2
237-78	Seal - O-Ring	22	46	2	302-60	Fitting - Grease	30	16	2
237-79	O-Ring	17	4	2	302-60	Fitting - Grease	31	30	1
237-79	O-Ring	28	22	1	321-2	Screw	1	26	2
237-79	Seal - O-Ring	7	9	3	321-5	Screw - Cap Hex. Hd.	21	15	8
237-80	O-Ring	17	9	1	321-5	Screw - Cap Hex. Hd.	1	20	1
237-80	Seal - O-Ring	21	9	4	321-6	Screw - Cap Hex. Hd.	20	30	2
237-80	Seal - O-Ring	4	11	2	321-8	Screw - Cap Hex. Hd.	4	35	1
237-86	O-Ring	18	15	4	321-11	Screw - Cap Hex. Hd.	5	11	2
237-88	Grommet	5	51	1	321-11	Screw - Cap Hex. Hd.	16	13	2
237-95	O-Ring	18	27	1	321-13	Screw - Cap Hex Hd.	17	22	3
237-117	O-Ring	17	30	2	321-13	Screw - Cap Hex. Hd.	12	1	3
237-125	Grommet	9	2	2	321-23	Screw - Cap Hex.Hd.	28	24	3
237-150	Seal - O-Ring	16	5	2	321-28	Screw - Cap Hex Hd.	23	13	1
242-50	Nut - Lug	4	19	4	321-39	Screw - Cap Hex. Hd.	10	6	4
242-50	Nut - Lug	21	22	8	322-1	Screw - Cap Hex. Hd.	7	1	2

*Not Illustrated

TORO PART NUMBER INDEX (Cont.)

Part No.	Description	Pg. Ref.			Part No.	Description	Pg. Ref.		
		No.	No.	Qty.			No.	No.	Qty.
322-3	Capscrew - Hex. Hd.	9	17	4	3234-17	Screw - Cap Hex. Hd.	1	15	6
322-3	Screw - Cap Hex. Hd.	15	1	2	3234-17	Screw - Hex. Flange Hd.	5	27	2
322-3	Screw - Cap Hex. Hd.	1	25	31	3234-17	Screw - Cap Hex. Hd.	1	2	10
322-3	Screw - Cap Hex. Hd.	12	52	1	3234-32	Screw - Cap Hex. Hd.	31	28	1
322-3	Screw - Hex. Hd. Cap	5	1	9	3234-32	Screw - Hex. Flange Hd.	30	14	2
322-4	Screw - Cap Hex. Hd.	30	10	2	3242-4	Screw - Set	25	21	8
322-4	Screw - Cap Hex. Hd.	31	23	1	3245-9	Screw - Set	17	18	1
322-4	Screw - Cap Hex. Hd.	18	24	4	3245-35	Screw - Set	25	24	4
322-4	Screw - Hex. Washer Hd.	21	4	2	3249-3	Screw - Rd. Hd. Machine	20	6	2
322-7	Capscrew - Hex. Nd.	20	10	2	3249-5	Screw - Round Hd.	26	6	2
322-9	Screw - Cap Hex. Hd.	4	9	1	3250-50	Screw - Pan Hd.	2	36	2
322-12	Screw - Cap Hex. Hd.	3	11	1	3253-3	Washer - Lock	12	2	3
322-17	Capscrew - Hex. Hd.	20	24	1	3253-3	Washer - Lock	17	20	3
322-17	Screw - Cap Hex. Hd.	21	2	1	3253-3	Washer - Lock	1	21	3
322-17	Screw - Cap Hex. Hd.	25	13	6	3253-4	Washer - Lock	21	3	2
322-26	Screw - Cap Hex. Hd.	31	36	1	3253-4	Washer - Lock	30	11	2
322-43	Screw - Cap Hex. Hd.	15	21	4	3253-4	Washer - Lock	7	14	2
322-43	Screw - Cap Hex. Hd.	5	23	1	3253-4	Washer - Lock	15	16	2
322-45	Screw - Hex. Hd. Cap	5	13	1	3253-4	Washer - Lock	9	16	4
322-46	Screw - Cap Hex. Hd.	12	33	2	3253-4	Washer - Lock	31	22	2
323-6	Screw - Cap Hex. Hd.	26	2	2	3253-4	Washer - Lock	12	28	2
323-7	Screw - Cap Hex. Hd.	31	8	1	3253-5	Washer - Lock	8	12	1
323-7	Screw - Cap Hex. Hd.	30	28	2	3253-6	Washer - Lock	12	49	1
323-8	Screw - Cap Hex. Hd.	12	42	4	3253-21	Washer - Lock	9	18	4
323-9	Capscrew - Hex. Hd.	9	19	4	3253-21	Washer - Lock	15	19	2
323-11	Screw - Cap Hex. Hd.	18	46	4	3253-27	Washer - Lock	12	23	1
323-13	Screw - Cap Hex. Hd.	26	46	1	3254-1	Washer - Lock	15	12	2
323-15	Screw - Cap Hex. Hd.	25	5	2	3254-5	Washer - Lock	10	11	1
323-23	Screw - Cap Hex. Hd.	26	20	2	3254-9	Washer - Lock	20	20	2
324-7	Screw - Cap Hex. Hd.	12	48	1	3254-9	Washer - Lock Internal	26	5	2
325-4	Screw - Cap Hex. Hd.	25	19	4	3255-2	Washer - Lock	4	31	1
325-6	Screw - Cap Hex. Hd.	4	1	1	3255-7	Washer - Lock	12	4	1
325-7	Screw - Cap Hex. Hd.	17	14	2	3255-7	Washer - Lock	20	22	3
325-11	Screw - Cap Hex. Hd.	4	25	4	3255-8	Screw - Hex. Flange Hd.	5	33	4
325-11	Screw - Cap Hex. Hd.	21	28	8	3255-8	Washer - Lock E.T.L.W.	6	58	1
325-18	Screw - Cap Hex. Hd.	17	23	1	3256-1	Washer - Flat	15	5	2
3210-7	Capscrew - Hex. Hd.	20	18	1	3256-1	Washer - Flat	10	7	4
3213-9	Capscrew - Hex. Hd.	12	24	1	3256-4	Washer - Flat	26	25	4
3217-6	Nut - Hex.	15	3	2	3256-6	Washer - Flat	30	15	2
3217-6	Nut - Hex.	12	29	2	3256-6	Washer - Flat	31	27	1
3217-7	Nut - Hex.	2	39	2	3256-16	Washer - Flat	21	12	8
3217-29	Nut - Lock	20	21	2	3256-21	Washer - Flat	1	7	2
3218-1	Nut - Hex.	12	44	1	3256-22	Washer - Flat	1	1	8
3218-5	Nut - Hex. Jam	10	32	1	3256-22	Washer - Flat	16	9	2
3218-6	Nut - Jam	32	9	1	3256-22	Washer - Flat	28	23	9
3218-13	Nut - Lock	15	17	2	3256-23	Washer - Flat	5	4	9
3218-19	Nut - Hex.	10	8	2	3256-23	Washer - Flat	25	14	6
3219-14	Nut - Hex.	33	3	1	3256-23	Washer - Flat	9	15	4
3219-14	Nut - Hex.	15	13	2	3256-23	Washer - Flat	1	16	1
3220-2	Nut - Jam	21	33	2	3256-23	Washer - Flat	26	16	1
3220-2	Nut - Jam R.H.	20	16	1	3256-24	Washer	28	4	1
3220-3	Nut - Jam	3	12	2	3256-24	Washer	18	50	1
3220-3	Nut - Jam	4	27	2	3256-24	Washer - Flat	25	8	1
3220-5	Nut - Jam	3	14	1	3256-24	Washer - Flat	15	18	2
3220-12	Nut - Jam	4	29	1	3256-24	Washer - Flat	26	18	4
3220-20	Nut - Jam L.H.	20	2	1	3256-25	Washer - Flat	12	50	1
3229-1	Bolt - Carriage	30	1	2	3256-26	Washer - Flat	3	21	2
3229-1	Bolt - Carriage	1	10	2	3256-26	Washer - Flat	10	35	1
3229-22	Bolt - Carriage	2	43	1	3256-45	Washer - Flat	31	10	4
3229-22	Bolt - Carriage	6	54	2	3256-45	Washer - Flat	30	19	4
3230-15	Bolt - Carriage	5	9	2	3256-53	Washer - Flat	26	3	2
3234-4	Screw - Cap Hex. Hd.	12	3	3	3256-53	Washer - Flat	20	33	2
3234-4	Screw - Cap Hex. Hd.	12	14	1	3256-54	Washer - Flat	32	4	1
3234-4	Screw - Hex Washer Hd.	17	11	2	3256-57	Washer - Flat	31	38	1
3234-4	Screw - Hex. Washer Hd.	26	10	1	3256-70	Washer - Flat	5	12	7
3234-13	Screw - Hex. Flange Hd.	5	3	6	3256-70	Washer - Flat	15	22	4
3234-14	Screw - Hex. Hd. Cap	5	5	2	3256-70	Washer - Flat	12	32	2

*Not Illustrated

TORO PART NUMBER INDEX (Cont.)

3316-356

Part No.	Description	Pg. No.	Ref. No.	Qty.	Part No.	Description	Pg. No.	Ref. No.	Qty.
3256-74	Washer - Flat	20	13	8	32120-11	Ring - Retaining	18	36	1
3257-15	Key - Square	24	11	1	32120-15	Ring - Retaining	18	34	1
3257-32	Key - Woodruff	18	7	1	32121-6	Pin - Roll	20	17	1
3257-32	Key - Woodruff	17	21	1	32121-6	Pin - Roll	5	43	1
3272-4	Pin - Cotter	26	13	1	32121-9	Pin - Roll	32	13	1
3272-4	Pin - Cotter	26	27	1	32121-10	Pin - Roll	3	9	1
3272-4	Pin - Cotter	5	36	2	32121-23	Pin - Roll	32	1	1
3272-6	Pin - Cotter	31	19	1	32121-24	Pin - Roll	20	3	1
3272-6	Pin - Cotter	21	31	4	32121-34	Pin - Roll	17	34	1
3272-6	Pin - Cotter	26	43	1	32121-38	Pin - Spring	8	15	1
3272-6	Pin - Cotter	17	48	1	32121-79	Pin - Roll	21	39	2
3272-7	Pin - Cotter	21	43	1	32121-91	Pin - Coiled Spring	18	38	3
3272-10	Pin - Cotter	30	22	4	32121-124	Pin - Roll	26	28	1
3272-10	Pin - Cotter	31	33	2	32122-2	Screw - Round Hd.	33	2	1
3272-11	Pin - Cotter	31	4	1	32122-14	Screw - Truss Hd.	5	49	2
3272-11	Pin - Cotter	26	32	5	32128-14	Flange Locknut	23	9	1
3272-13	Pin - Cotter	31	13	2	32128-20	Nut - Flange	2	46	2
3272-13	Pin - Cotter	30	27	2	32128-20	Nut - Lock	22	48	2
3290-196	Nut - Retainer	5	38	3	32128-25	Nut - Flange Lock	25	15	6
3290-199	Nut - Speed	15	11	1	32128-25	Nut - Flange Lock	5	15	17
3290-199	Nut - Speed	5	40	3	32128-25	Nut - Flange Lock	1	17	6
3290-224	Washer - Lock Pyramidal	2	40	2	32128-25	Nut - Lock	12	35	2
3290-378	Tie - Cable	4	7	1	32128-25	Nut - Lock	15	23	2
3290-378	Tie - Cable	12	17	1	32128-32	Nut - Hex. Flange	16	8	2
3290-379	Cable Tie	17	42	4	32128-33	Nut - Flange Lock	30	4	2
3290-379	Tie - Cable	9	1	2	32128-33	Nut - Flange Lock	6	55	2
3290-379	Tie - Cable	16	19	2	32128-43	Nut - Flange Lock	5	35	4
3290-410	Tie - Push Mount	12	39	1	32128-44	Nut - Flange	5	8	2
3290-470	Screw - Machine	9	12	2	32144-18	Screw - Cap Hex. Hd.	10	24	2
3296-4	Nut - Lock	26	15	1	32144-22	Screw - Hex. Hd. Self-Tap	1	18	4
3296-6	Nut - Lock	13	9	3	32144-69	Screw - Self Tapping	16	27	2
3296-6	Nut - Lock	17	15	1	32148-8	Insert - Threaded	6	57	1
3296-16	Nut - Lock	1	3	5	32149-2	Nut - Hex.	15	15	2
3296-16	Nut - Lock	28	18	3	32151-46	Ring - Retaining	18	13	2
3296-16	Nut - Lock	20	25	2	32153-3	Nut - Lock	20	15	2
3296-23	Nut - Flange Lock	4	23	4	3333-975	Tie - Cable	12	12	1
3296-23	Nut - Lock	25	12	4	340-1	Fitting - Straight	16	14	1
3296-23	Nut - Lock	17	35	3	340-4	Fitting - Hydraulic Straight	7	15	1
3296-23	Nut - Lock	21	42	8	340-5	Fitting	23	4	1
3296-28	Nut - Lock	3	22	2	340-77	Fitting - Hydraulic 90	26	47	1
3296-29	Nut - Flange Lock	3	7	1	340-87	Fitting - Hydraulic 45	26	39	1
3296-29	Nut - Lock	4	5	1	340-88	Fitting - Straight	28	15	1
3296-29	Nut - Lock	5	6	2	340-89	Fitting - Hydraulic 45	21	8	4
3296-29	Nut - Lock	20	19	1	340-92	Fitting	17	46	1
3296-39	Nut - Flange Lock	26	26	5	340-96	Fitting - 45 Elbow	16	7	2
3296-39	Nut - Lock	25	1	2	340-97	Fitting - 90 Elbow	28	17	1
3296-39	Nut - Lock	31	15	1	340-98	Fitting - 90 Elbow	17	3	1
3296-39	Nut - Lock	30	31	2	340-98	Fitting - Hydraulic 90	7	8	1
3296-39	Nut - Lock	12	40	4	340-99	Fitting	23	7	1
3296-39	Nut Lock	28	3	1	340-99	Fitting - 90 Elbow	28	21	1
3296-42	Nut - Lock	21	11	8	340-99	Fitting - Hydraulic 90	16	16	1
3296-42	Nut - Lock	10	21	4	340-102	Fitting - Tee	17	31	2
3296-42	Nut - Lock	4	33	1	340-102	T-Fitting	17	37	1
3296-42	Nut - Lock	6	56	2	340-103	Fitting - Hydraulic 45	22	45	1
3296-56	Nut - Lock	12	7	2	340-104	Fitting - Male/Female Tee	16	21	1
3296-59	Nut - Lock	25	7	1	340-107	Fitting - Straight	16	4	1
3296-59	Nut - Lock	31	9	2	340-109	Fitting - Hydraulic Tee	7	11	1
3296-59	Nut - Lock	30	18	2	340-109	Fitting - Male Tee	16	3	1
3298-8	Screw - Set	10	25	1	340-140	Fitting - Hydraulic Tee	22	*	1
32103-12	Nut - Wing	15	4	2	340-140	Fitting - Tee	17	41	1
32104-6	Screw - Cap Hex. Hd.	30	32	2	340-141	Fitting - Hydraulic Straight	4	12	2
32104-6	Screw - Cap Hex. Hd.	31	35	1	340-168	Fitting - 90 Male Elbow	16	31	2
32104-77	Screw - Hex. Hd. Self-Tap	1	8	2	353-954	Fitting - 90 Elbow	17	33	1
32104-82	Screw - Hex. Hd. Self-Tap	2	34	4	354-23	Ball	8	5	1
32108-101	Screw - Flathead	15	9	1					

*Not Illustrated

PRODUCT CHANGES

In an effort to make improvements available to TORO owners as quickly as possible, minor changes are incorporated into Toro's products from time to time that do not become immediately shown in the Parts Catalog. If such a change has been made in your unit, which is not reflected in your manual, see your TORO Distributor or his Authorized TORO Service Dealer for information and part numbers.

IDENTIFICATION AND ORDERING

MODEL AND SERIAL NUMBERS

The Reelmaster 216 has two identification numbers; a model number and a serial number. The two numbers are stamped on a plate which is located on the main frame under the seat. In any correspondence concerning the Reelmaster 216, supply model and serial numbers to assure that correct information and replacement parts are obtained.

To order replacement parts from an Authorized TORO Service Dealer, supply the following information:

1. Model and serial number of the Reelmaster 216.
2. Part number, description, and the quantity of part(s) desired.

NOTE: Do not order by reference number if a parts catalog is being used; use the PART NUMBER.

TABLE OF CONTENTS

Description	Page	Description	Page
Hood Assembly	1-2	Traction Controls Assembly	20
Frame Assembly	3	Front Wheel Assembly	21-22
Rear Wheel Assembly	4	Right Front Wheel Plumbing Assembly	23
Seat Support Assembly	5-6	Hydraulic Drive Motor No. 66-5291	24
Rear Wheel Drive Valve Assembly	7	Jackshaft Assembly	25
Two Position Valve No. 92-3196	8	Cutting Unit Lift Assembly	26
Fuel Tank Assembly	9	Hydraulic Cylinder No. 76-0020	27
Instrument Panel Assembly	10	Cutting Unit Lift Control Valve Assembly	28
Electrical Schematic	11	Control Valve No. 43-1950	29
Engine & Clutch Assembly	12	Front Cutting Unit Lift Arm Assembly	30
Electric Clutch Assembly No. 70-8020	13	Rear Cutting Unit Lift Arm Assembly	31
Hydraulic Schematic	14	Belt Tensioner Assembly No. 83-7900	32
Hydraulic Tank & Battery Assembly	15	Special Tools	33
Hydraulic Oil Cooler Assembly	16	Engine Kohler Model No. M1605	
Hydraulic Drive Assembly	17	Spec. No. 711563	34-39
Hydraulic Pump Assembly No. 92-9023	18-19	TORO Part Number Index	40-45

