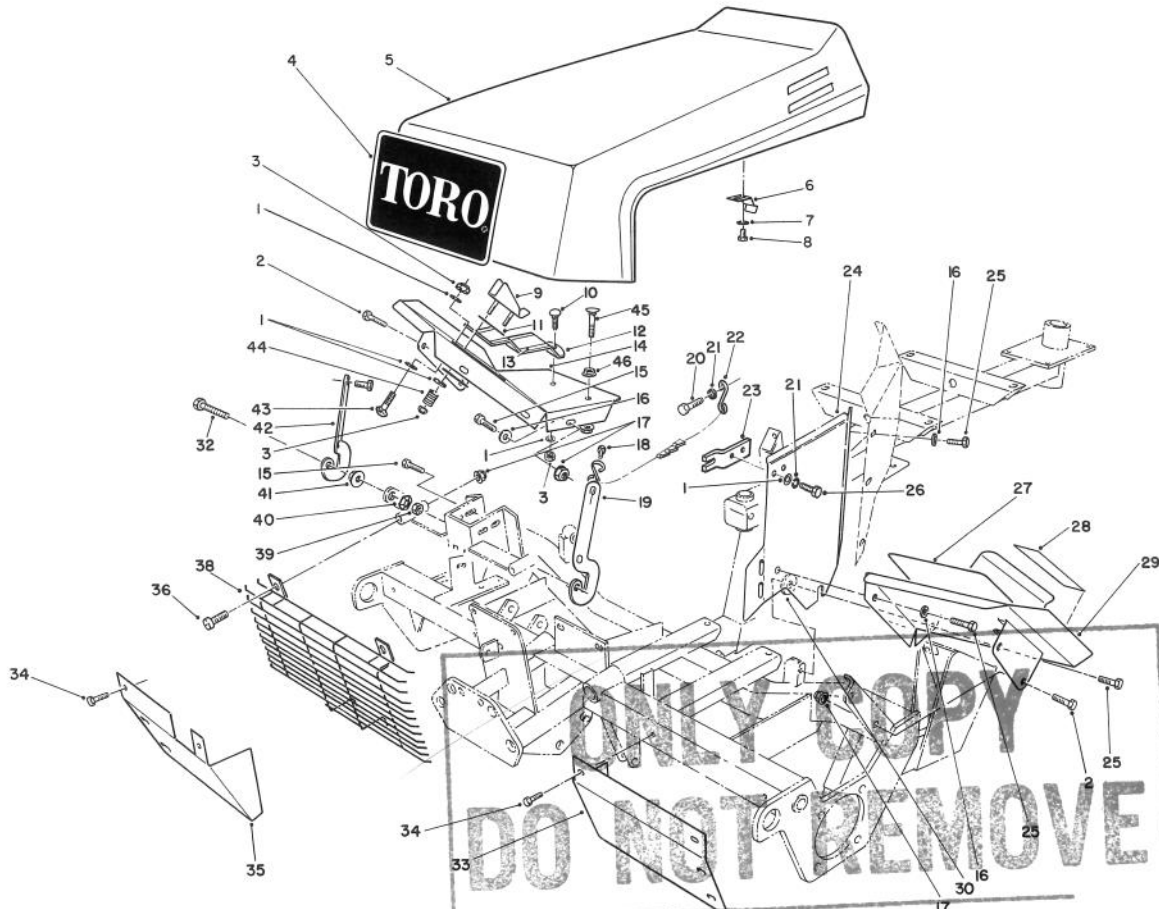


MODEL NO. 03410-40001 & UP

PARTS CATALOG

REELMASTER® 216G 2wd
Traction Unit

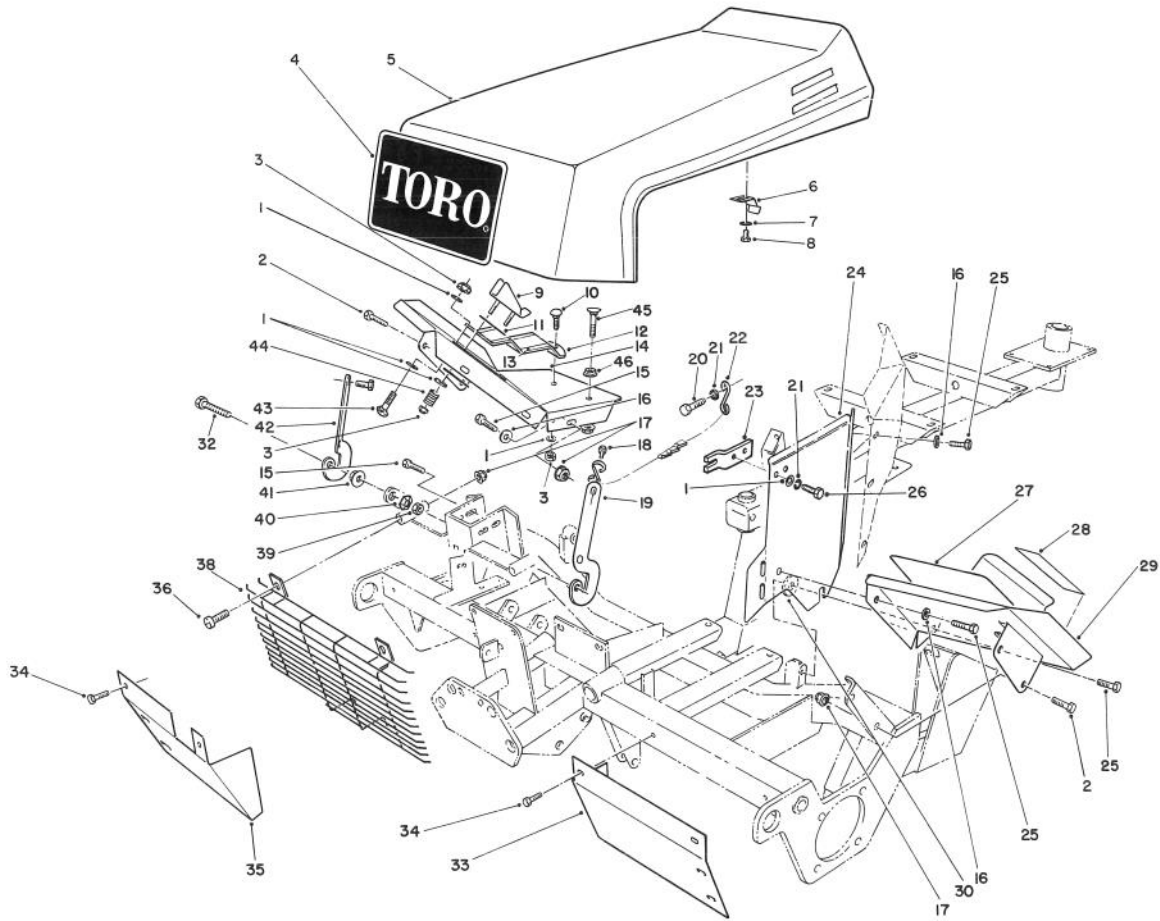


HOOD ASSEMBLY

T-0881

Ref. No.	Part No.	Description	No. Used
1	3256-22	Washer - Flat	8
2	3234-17	Screw - Cap Hex. Hd.	10
3	3296-16	Nut - Lock	5
4	62-7400	Decal - Toro Logo	1
5	62-5400	Hood Assembly	1
6	75-9310	Latch - Hood	1
7	3256-21	Washer - Flat	2
8	32104-77	Screw - Hex. Hd. Self-Tap	2
9	62-7320	Stop - Traction Pedal	1
10	3229-1	Bolt - Carriage	2
11	62-7350	Slide - Pedal Stop	2
12	76-2200	Footrest - Traction	1
13	76-2260	Pad - Footrest	1
14	80-4240	Footrest R.H.	1
15	3234-17	Screw - Cap Hex. Hd.	6
16	3256-23	Washer - Flat	1

Ref. No.	Part No.	Description	No. Used
17	32128-25	Nut - Flange Lock	6
18	32144-22	Screw - Hex. Hd. Self-Tap	4
19	28-0120	Bracket - Hinge L.H.	1
20	321-5	Screw - Cap Hex. Hd.	1
21	3253-3	Washer - Lock	3
22	76-0130	Hood Stop Chain Assembly	1
23	72-9540	Bracket - Heat Shield	1
24	72-4150	Shield - Heat	1
25	322-3	Screw - Cap Hex. Hd.	31
26	321-2	Screw	2
27	66-6120	Pad - Foot	1
28	84-1650	Decal - Brake	1
29	72-4360	Footrest - L.H.	1
30	62-7190	Spacer	1
32	57-3210	Screw - Hex. Washer Hd.	2
33	83-9800	Shield - Front Grass L.H.	1

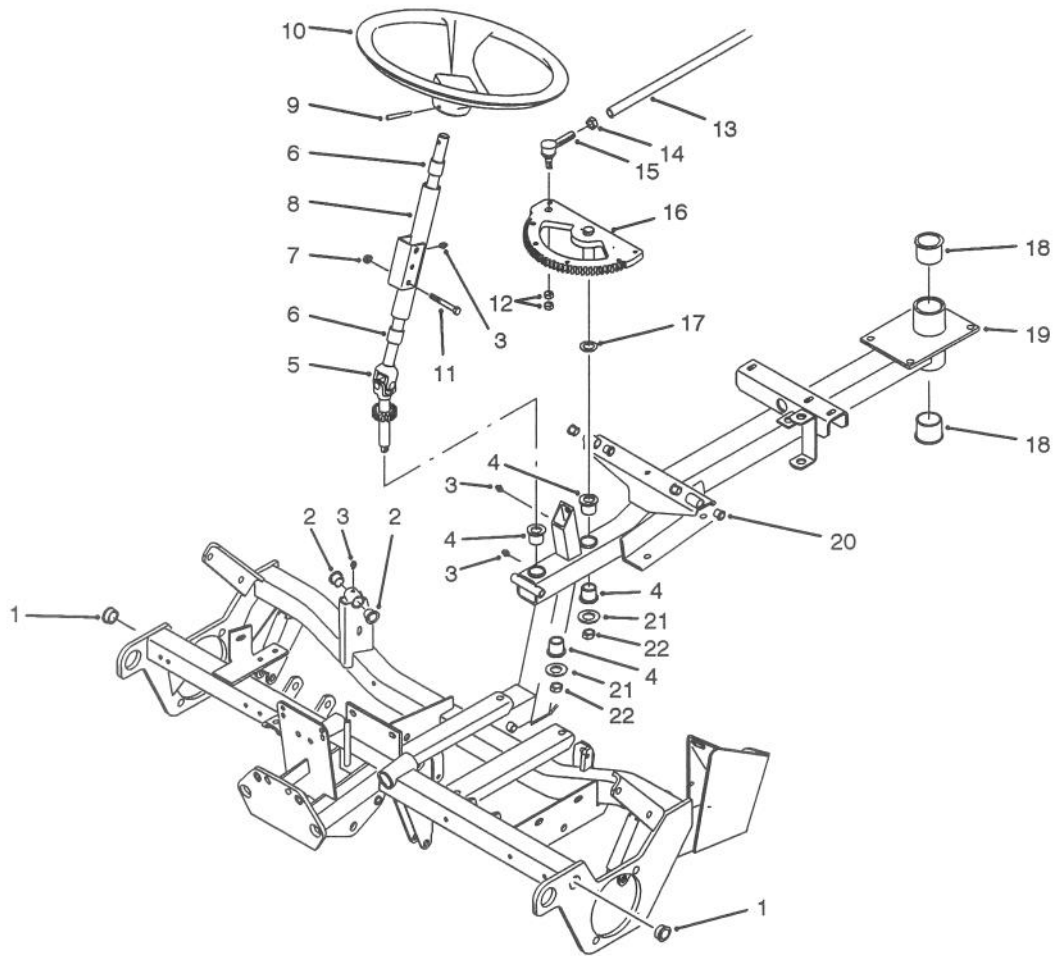


T-0881

HOOD ASSEMBLY (Continued)

Ref. No.	Part No.	Description	No. Used
34	32104-82	Screw - Hex. Hd. Self-Tap	4
35	83-8860	Shield - Front R.H.	1
36	3250-50	Screw - Pan Hd.	2
38	66-5340	Grille - Front	1
39	3217-7	Nut - Hex.	2
40	3290-224	Washer - Lock Pyramidal	2

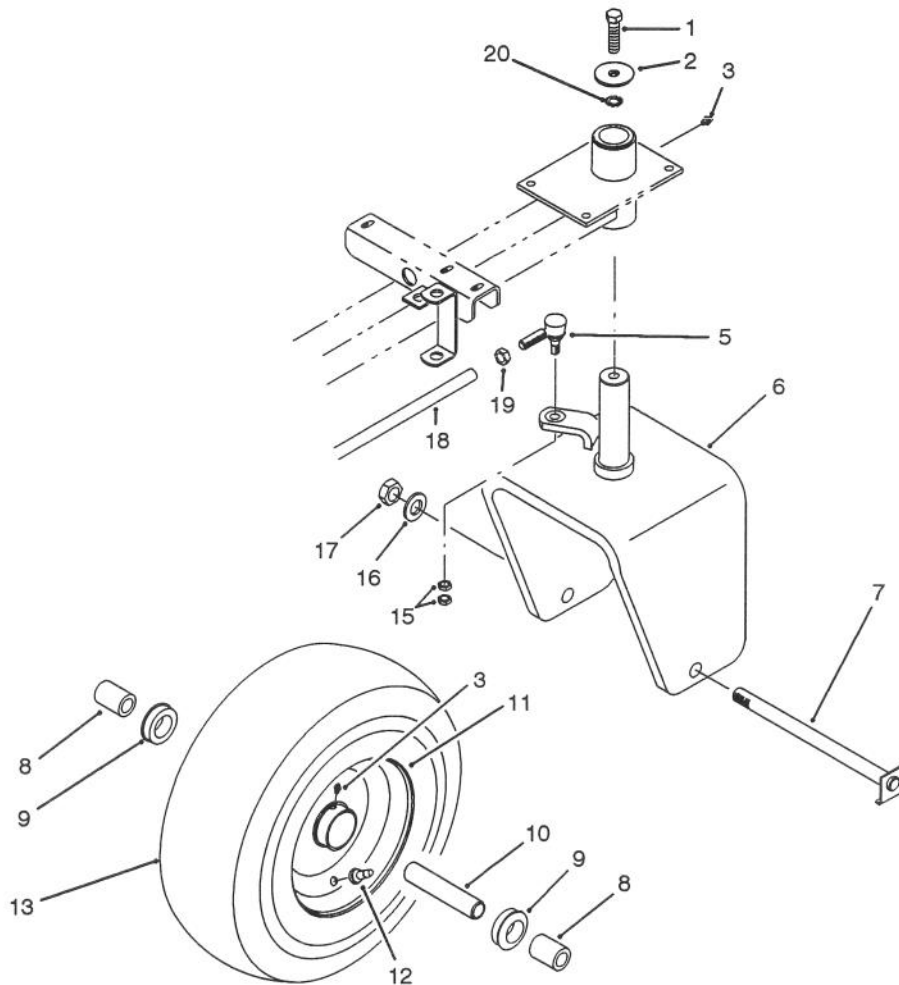
Ref. No.	Part No.	Description	No. Used
41	92-1841	Nut - Hood Pivot	2
42	28-0130	Bracket - Hinge R.H.	1
43	3229-22	Bolt - Carriage	1
44	10-4850	Spring - Compression	2
45	77-0480	Screw - Traction Stop	1
46	32128-20	Nut - Flange	2



T-1415

FRAME ASSEMBLY

Ref. No.	Part No.	Description	No. Used	Ref. No.	Part No.	Description	No. Used
1	256-247	Bushing - Flange	2	13	61-2070	Rod - Steering	1
2	256-287	Bushing - Flange	2	14	3220-5	Nut - Jam	1
3	302-5	Fitting - Grease	4	15	21-0141	Rod End Assembly (Incl. Ref. #12)	1
4	92-3162	Bushing - Flange	4	16	92-3172	Rack - Steering	1
5	92-3165	Steering Shaft & Gear	1	17	3-6498	Washer - Thrust	A/R
6	256-27	Bushing - Sleeve	2	18	256-245	Bushing - Flange	2
7	3296-29	Nut - Flange Lock	1	19	92-1820	Frame Assembly (Incl. Ref. #1, 2, 4, 19 & 20)	1
8	61-2090	Steering Column Assembly (Incl. Ref. #6)	1	20	256-321	Bushing - Flange	4
9	32121-10	Pin - Roll	1	21	3256-26	Washer - Flat	2
10	76-1420	Wheel - Steering	1	22	3296-28	Nut - Lock	2
11	322-12	Screw - Cap Hex. Hd.	1				
12	3220-3	Nut - Jam	2				



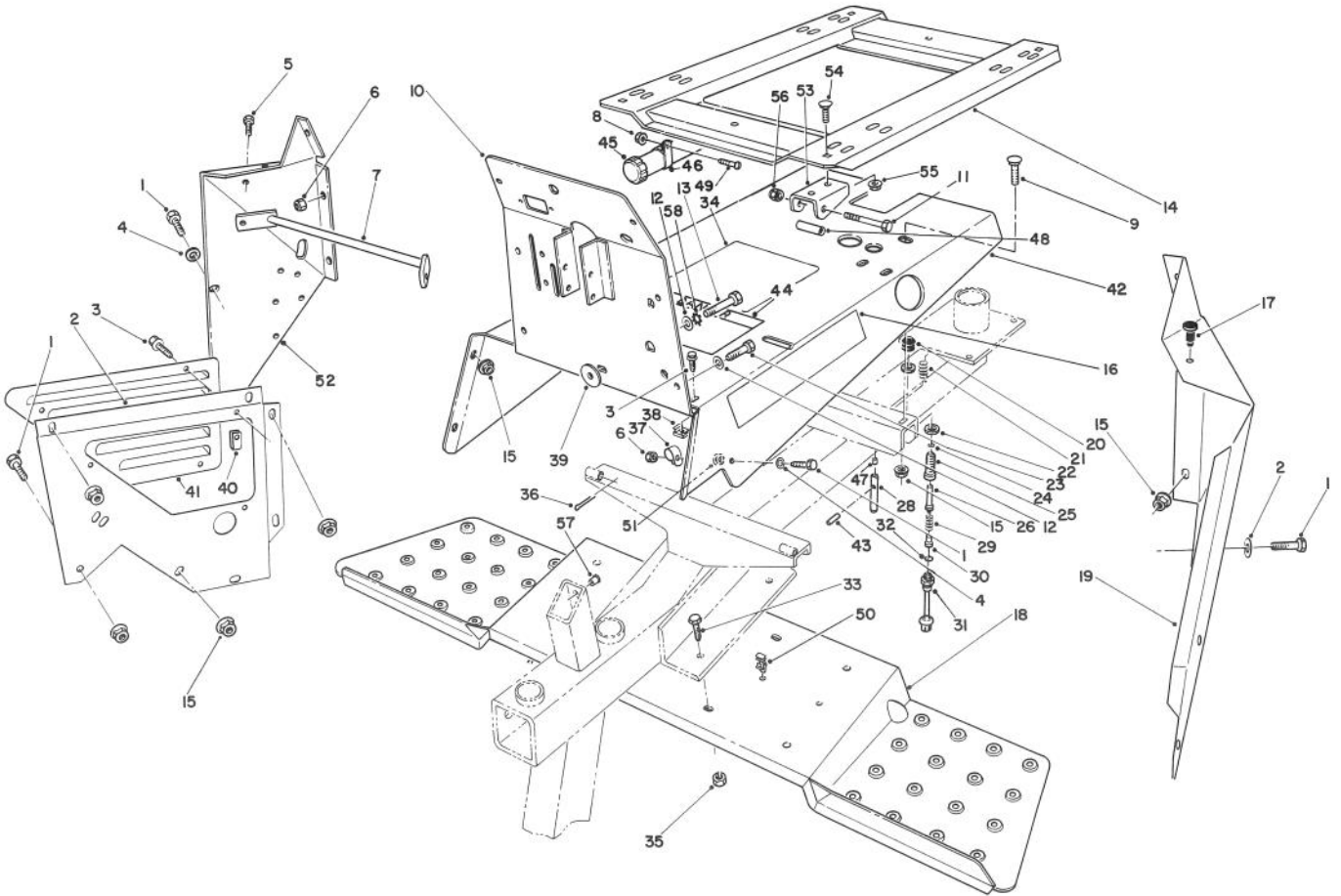
T-1421

REAR WHEEL ASSEMBLY

Ref. No.	Part No.	Description	No. Used
1	325-6	Screw - Cap Hex. Hd.	1
2	75-7730	Spacer	1
3	302-5	Fitting - Grease	2
5	20-0151	Rod End Assembly (Incl. Ref. #15)	1
6	83-7340	Fork - Caster	1
7	61-1960	Axle - Wheel	1
8	68-4210	Spacer - Wheel	2
9	251-321	Bearing - Wheel	2
10	241-130	Spacer - Bearing	1

Ref. No.	Part No.	Description	No. Used
11	241-129	Rim	1
12	232-47	Valve - Stem	1
13	231-122	Tire	1
15	3220-3	Nut - Jam	2
16	3256-28	Washer - Flat	1
17	3296-51	Nut - Lock	1
18	61-2070	Rod - Steering	1
19	3220-12	Nut - Jam	1
20	3255-2	Washer - Lock	1
*	232-47	Tube - Inner	1

*Not Illustrated

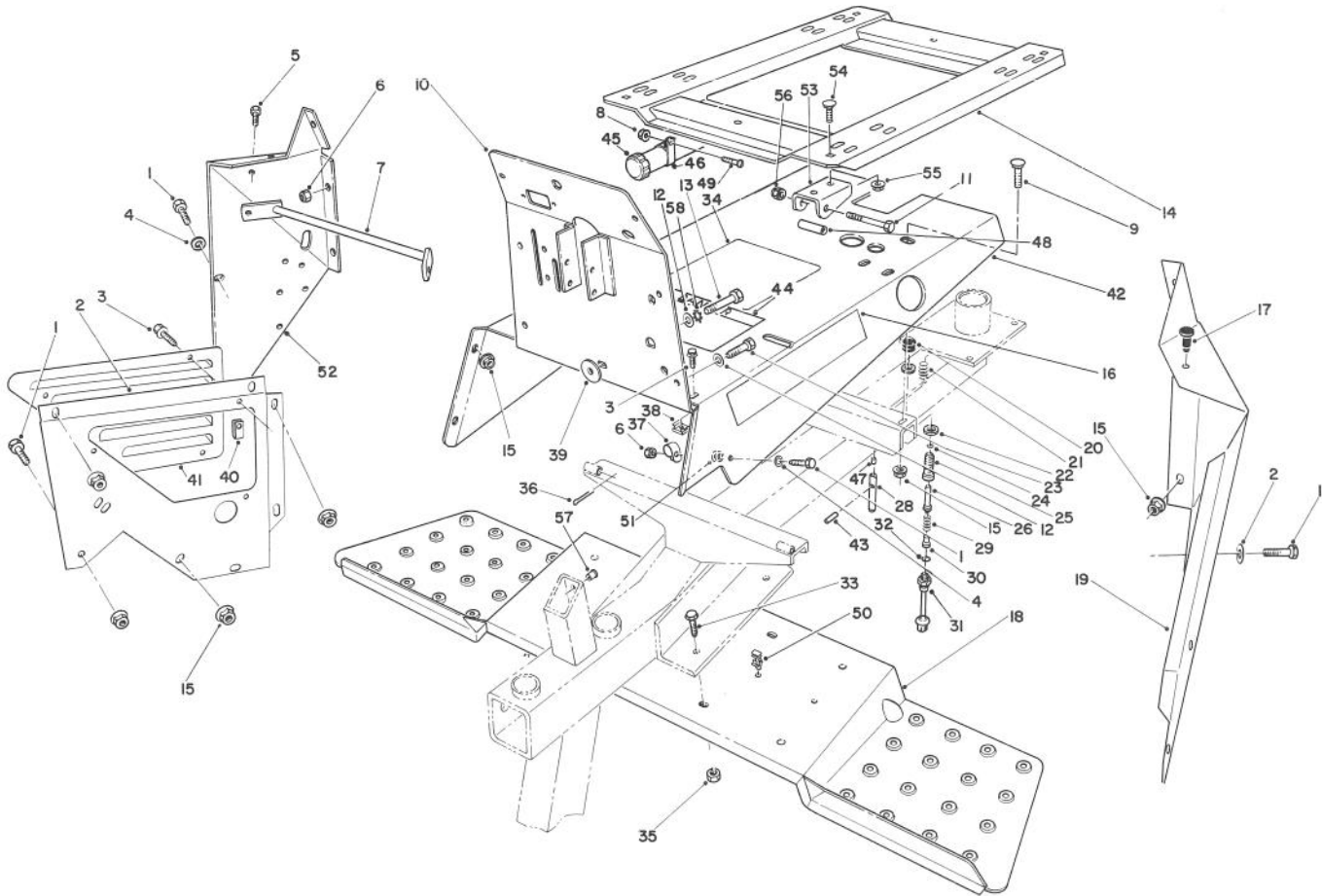


T-1066

SEAT SUPPORT ASSEMBLY

Ref. No.	Part No.	Description	No. Used
1	322-3	Screw - Hex. Hd. Cap	9
2	75-9260	Support - Hydraulic Tank	1
3	3234-13	Screw - Hex. Flange Hd.	6
4	3256-23	Washer - Flat	9
5	3234-14	Screw - Hex. Hd. Cap	2
6	3296-29	Nut - Lock	2
7	62-5330	Bracket - Side Panel	1
8	32128-44	Nut - Flange	2
9	3230-15	Bolt - Carriage	2
10	92-3189	Panel - Instrument	1
11	321-11	Screw - Cap Hex. Hd.	2
12	3256-70	Washer - Flat	7
13	322-45	Screw - Hex. Hd. Cap	1
14	85-5330	Plate - Seat	1
15	32128-25	Nut - Flange Lock	17
16	61-3840	Decal - Reelmaster 216	2
17	237-37	Bumper - Rubber	2
18	83-9730	Step - Foot	1
19	72-4350	Panel - Access L.H.	1
20	43-8870	Boot - Switch	1
21	37-9590	Spring	1
22	218-461	Nut - Jam	2
23	322-43	Screw - Cap Hex. Hd.	1
24	237-7	Seal - O-Ring	1
25	43-8620	Guide - Switch Pin	1
26	43-8860	Plunger - Switch	1

Ref. No.	Part No.	Description	No. Used
27	3234-17	Screw - Hex. Flange Hd.	2
28	27-9870	Pin - Seat Spring	1
29	43-8600	Spring - Compression	1
30	43-8610	Guide - Spring & Ball Seat	1
31	72-4320	Switch - Neutral	1
32	237-30	Seal - O-Ring	1
33	3255-8	Screw - Hex. Flange Hd.	4
34	88-9550	Decal - Service Information	1
35	32128-43	Nut - Flange Lock	4
36	3272-4	Pin - Cotter	2
37	2412-71	Clamp - R	1
38	3290-196	Nut - Retainer	3
39	62-7170	Spacer	1
40	3290-199	Nut - Speed	3
41	76-0500	Cover - Reservoir Support	1
42	92-3180	Panel	1
43	32121-6	Pin - Roll	1
44	83-9550	Decal - Warning	1
45	74-0720	Tube - Manual	1
46	2412-133	Clamp - R	2
47	28-6180	Pin	1
48	85-5340	Tube - Pivot	2
49	32122-14	Screw - Truss Hd.	2
50	80-3940	Clip - Rosebud	1
51	237-88	Grommet	1
52	61-3880	Panel - Access R.H.	1

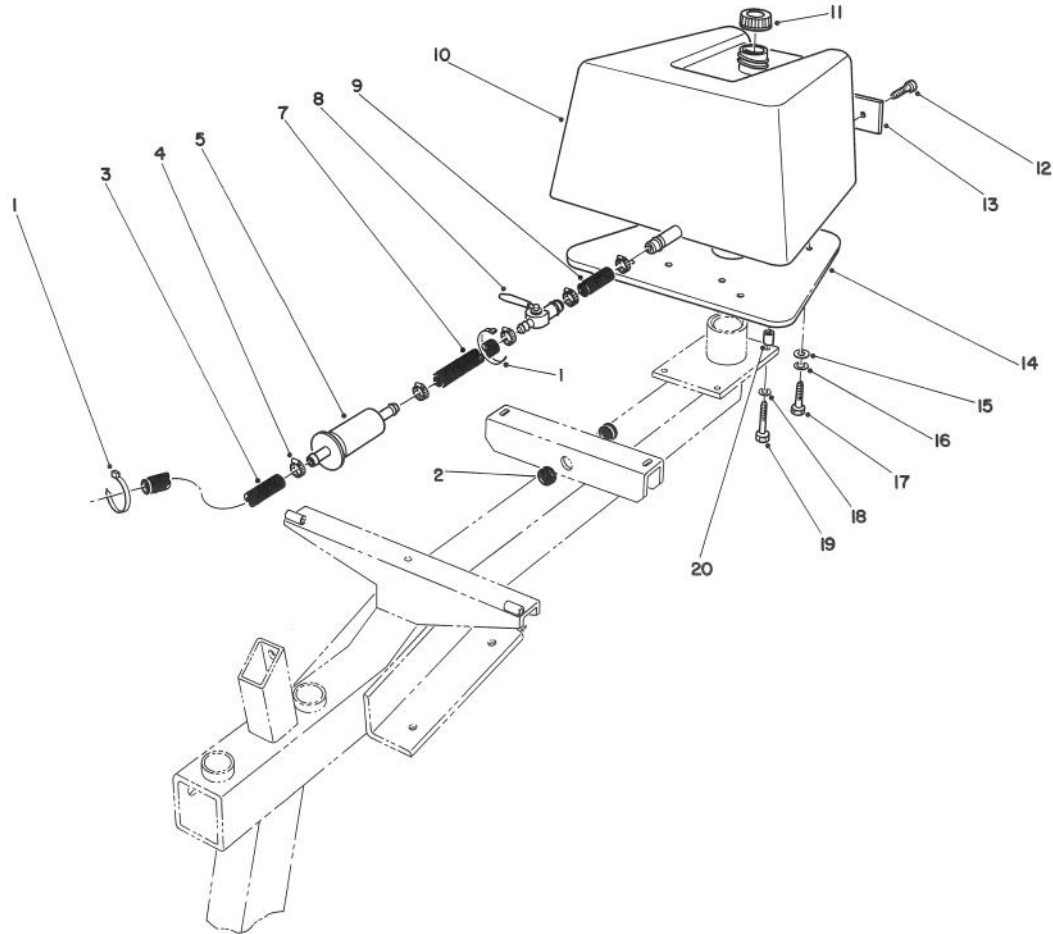


T-1066

SEAT SUPPORT ASSEMBLY (Continued)

Ref. No.	Part No.	Description	No. Used
53	85-5230	Bracket - Seat Pivot	2
54	3229-22	Bolt - Carriage	2
55	32128-33	Nut - Flange Lock	2

Ref. No.	Part No.	Description	No. Used
56	3296-42	Nut - Lock	2
57	32148-8	Insert - Threaded	1
58	3255-8	Washer - Lock E.T.L.W.	1



T-1067

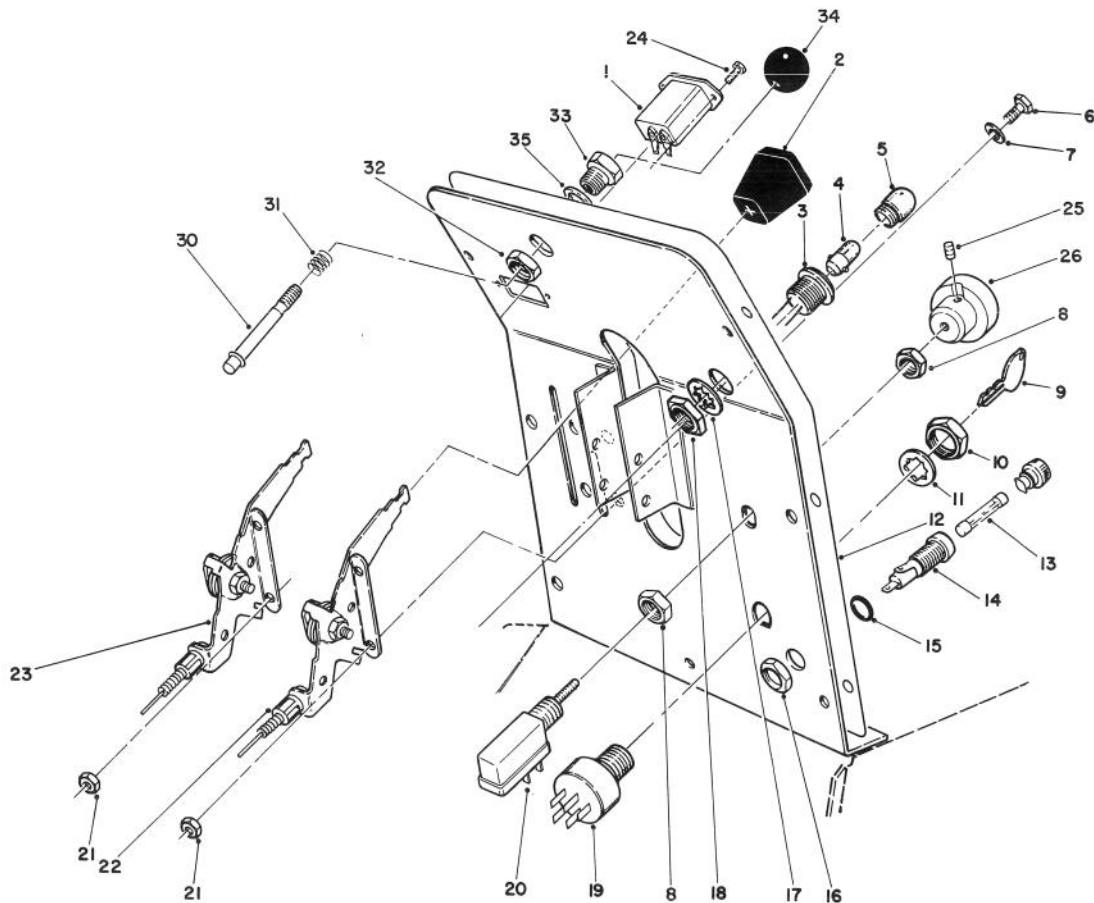
FUEL TANK ASSEMBLY

Ref. No.	Part No.	Description	No. Used
1	3290-379	Tie - Cable	2
2	237-125	Grommet	2
3	47-2980	Hose - Fuel	1
4	2412-36	Clamp - Hose	6
5	38-8000	Filter - Fuel	1
7	47-2988	Hose - Fuel	1
8	61-3550	Valve - Ball	1
9	56-2230	Hose - Fuel	1
10	61-0030	Tank - Fuel	1
11	55-3570	Cap - Fuel	1
12	3290-470	Screw - Machine	2

Ref. No.	Part No.	Description	No. Used
13	61-3310	Plate - Toro Logo	1
14	61-2680	Weight - Standard	1
*	62-5140	Weight - 8 Blade (Optional)	1
15	3256-23	Washer - Flat	4
16	3253-4	Washer - Lock	4
17	322-3	Capscrew - Hex. Hd.	4
18	3253-21	Washer - Lock	4
19	323-9	Capscrew - Hex. Hd.	4
†20	61-2220	Spacer	4

*Not Illustrated

†Use with 5 blade cutting units only.

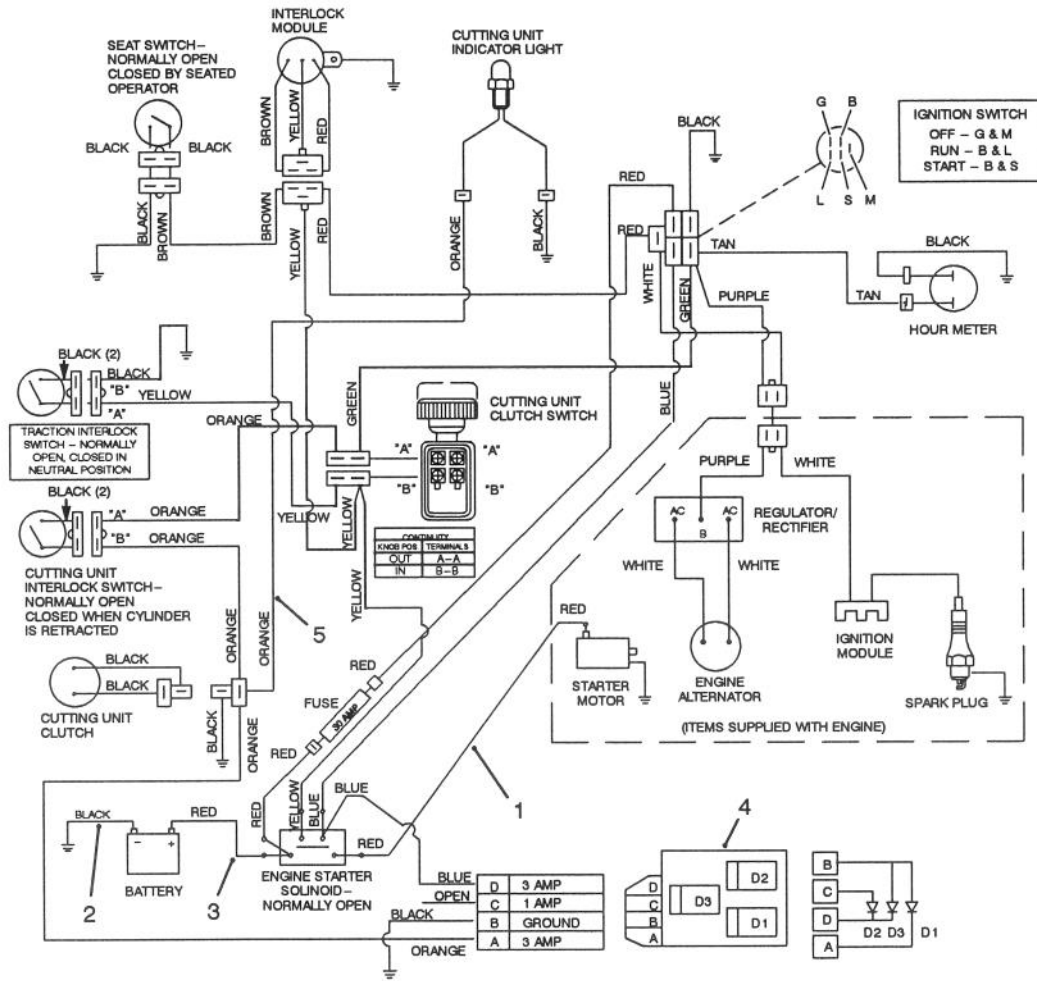


T-0264

INSTRUMENT PANEL ASSEMBLY

Ref. No.	Part No.	Description	No. Used	Ref. No.	Part No.	Description	No. Used
1	75-6820	Meter - Hour	1	17	218-536	Washer - Lock	1
2	66-0120	Knob	2	18	218-535	Nut	1
3	44-2212	Lamp - Pilot (Incl. Ref. #4, 5 & 17-18)	1	19	23-0660	Switch - Key (Incl. Ref. #9-11)	1
†4	219-18	Bulb - Light (GE #1893)	1	20	92-3194	Switch - Clutch (Incl. Ref. #8, 25 & 26)	1
5	218-562	Lens	1	21	3296-42	Nut - Lock	4
6	321-39	Screw - Cap Hex. Hd.	4	22	80-4120	Control - Choke	1
7	3256-1	Washer - Flat	4	23	80-4110	Control - Throttle	1
8	3218-19	Nut - Hex.	2	24	32144-18	Screw - Cap Hex. Hd.	2
9	63-8360	Key	1	25	3298-8	Screw - Set	1
10	218-461	Nut	1	26	92-3195	Knob	1
11	3254-5	Washer - Lock	1	30	75-9330	Pin - Hood Latch	1
12	92-3177	Decal - Instrument Panel	1	31	5-4723	Spring - Compression	1
†13		Fuse - 30 Amp.	1	32	3218-5	Nut - Hex. Jam	1
14	218-489	Fuse Holder Assembly (Incl. Ref. #15-16)	1	33	75-9320	Bushing - Hood Latch	1
15		Seal - O-Ring	1	34	233-17	Knob	1
16		Nut - Hex.	1	35	3256-26	Washer - Flat	1

†Obtain Locally

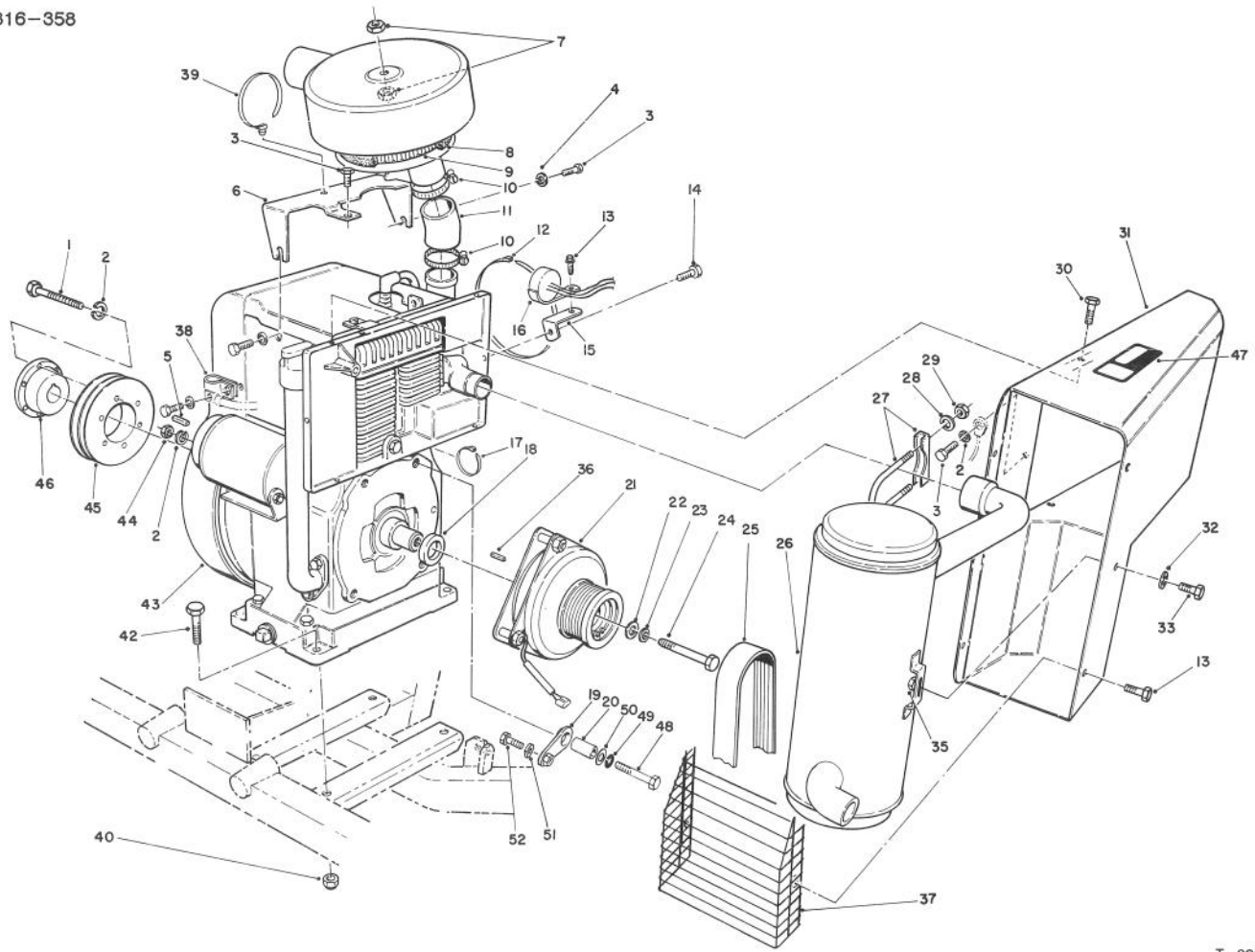


T-1068

ELECTRICAL SCHEMATIC

Ref. No.	Part No.	Description	No. Used
1	61-2660	Wire - Solenoid/Starter	1
2	61-2670	Wire - Ground	1
3	10-7130	Wire - Battery/Solenoid	1

Ref. No.	Part No.	Description	No. Used
4	92-3191	Diode - Circuit Board	1
5	92-7901	Wire Harness Assembly	1

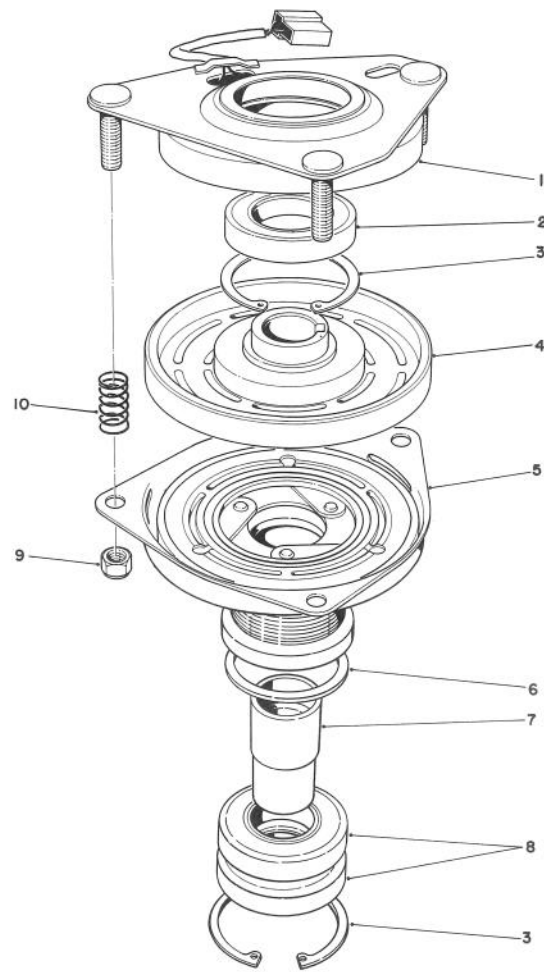


T-0266

ENGINE & CLUTCH ASSEMBLY

Ref. No.	Part No.	Description	No. Used
1	321-13	Screw - Cap Hex. Hd.	3
2	3253-3	Washer - Lock	3
3	3234-4	Screw - Cap Hex. Hd.	3
4	3255-7	Washer - Lock	1
5	10-7070	Key - Square	1
6	61-2120	Bracket - Air Cleaner	1
7	3296-56	Nut - Lock	2
8		Precleaner - Air Cleaner	1
9		Element - Air Cleaner	1
10	2412-92	Clamp - Hose	2
11	61-3470	Hose	1
12	3333-975	Tie - Cable	1
13	49-2040	Screw - Tapping	5
14	3234-4	Screw - Cap Hex. Hd.	1
15	76-0070	Bracket - Interlock Module	1
16	59-9810	Module - Ignition	1
17	3290-378	Tie - Cable	1
18	70-7080	Spacer - Clutch	1
19	92-1810	Arm - Torque	1
20	92-1813	Spacer - Torque Arm	1
21	70-8020	Clutch Assembly	1
22	70-8040	Washer - Flat	1
23	3253-27	Washer - Lock	1
24	3213-9	Capscrew - Hex. Hd.	1
25	61-3390	Belt - Poly-V	1
26	84-1850	Muffler	1

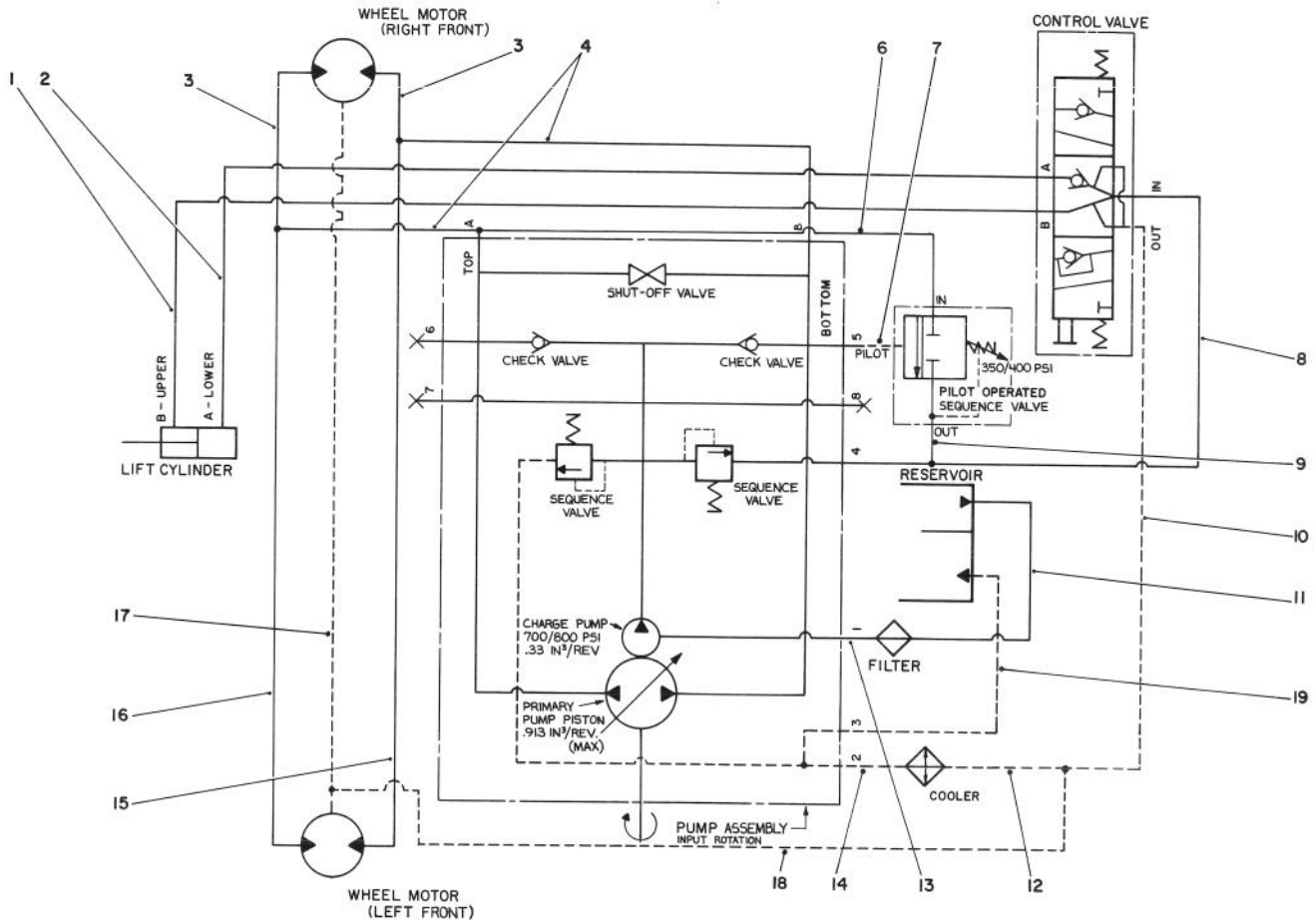
Ref. No.	Part No.	Description	No. Used
27	2112-9	Clamp - Muffler (Incl. Ref. #28-29)	1
28	3253-4	Washer - Lock	2
29	3217-6	Nut - Hex.	2
30	12-3270	Screw - Cap Hex. Hd.	4
31	61-0020	Shroud - Muffler	1
32	3256-70	Washer - Flat	2
33	322-46	Screw - Cap Hex. Hd.	2
35	32128-25	Nut - Lock	2
36	70-8030	Key	1
37	84-1840	Grille - Muffler	1
38	2412-41	Clamp - R	1
39	3290-410	Tie - Push Mount	1
40	3296-39	Nut - Lock	4
42	323-8	Screw - Cap Hex. Hd.	4
43		Engine - Kohler Model No. M16 Spec. No. 711563	1
44	3218-1	Nut - Hex.	1
45	92-1819	Pulley - Engine	1
46	61-3340	Bushing - Taper (Incl. Ref. #1-2)	1
47	66-6840	Decal - Hot	1
48	324-7	Screw - Cap Hex. Hd.	1
49	3253-6	Washer - Lock	1
50	3256-25	Washer - Flat	1
51	92-1814	Spacer - Torque Arm	1
52	322-3	Screw - Cap Hex. Hd.	1



T-0267

ELECTRIC CLUTCH ASSEMBLY NO. 70-8020

Ref. No.	Part No.	Description	No. Used	Ref. No.	Part No.	Description	No. Used
1	44-8350	Field Assembly (Incl. Ref. #2 & 3)	1	5	62-5250	Armature & Pulley Assembly (Incl. Ref. #3, 6, 7 & 8)	1
2	251-292	Bearing - Field	1	6	44-8330	Spacer - Pulley Bearing	1
3	44-8310	Ring - Retaining	2	7	76-0080	Collar - Bearing	1
4	44-8360	Field Coil, Rotor & Bearing Assembly (Incl. Ref. #1)	1	8	251-291	Bearing - Pulley	2
				9	3296-6	Nut - Lock	3
				10	44-8320	Spring - Compression	3

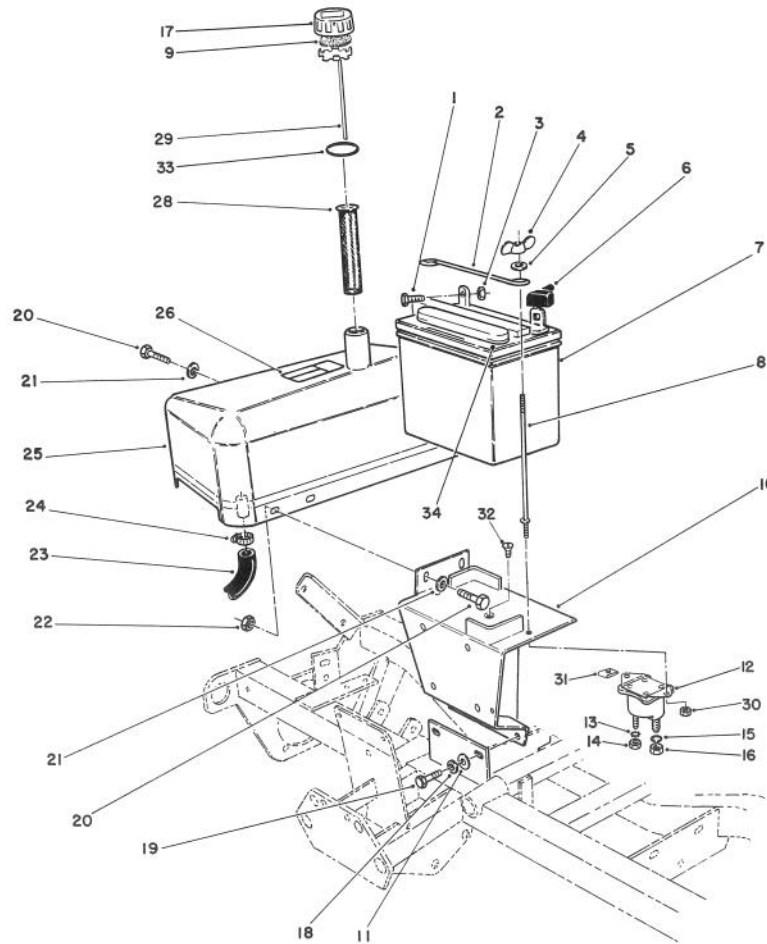


T-0268

HYDRAULIC SCHEMATIC

Ref. No.	Part No.	Description	No. Used
1	61-2500	Hose Assembly	1
2	61-2490	Hose Assembly	1
3	61-3060	Tube - Hydraulic R.H.	2
4	76-2520	Hydraulic Hose Assembly	2
6	76-2530	Hose - Hydraulic	1
7	63-4890	Hose - Hydraulic	1
8	61-2520	Hydraulic Hose Assy. Upper	1
9	63-4880	Hose - Hydraulic	1
10	61-2510	Hydraulic Hose Assy. Lower	1

Ref. No.	Part No.	Description	No. Used
11	61-2550	Hose - Hydraulic	1
12	92-2406	Hose - Hydraulic	1
13	61-2540	Hose - Hydraulic	1
14	92-2407	Hose - Hydraulic	1
15	61-3070	Tube - Hydraulic L.H. Rear	1
16	61-3080	Tube - Hydraulic L.H. Front	1
17	76-2550	Hose - Hydraulic	1
18	76-2540	Hose - Hydraulic	1
19	92-2408	Hose - Hydraulic	1



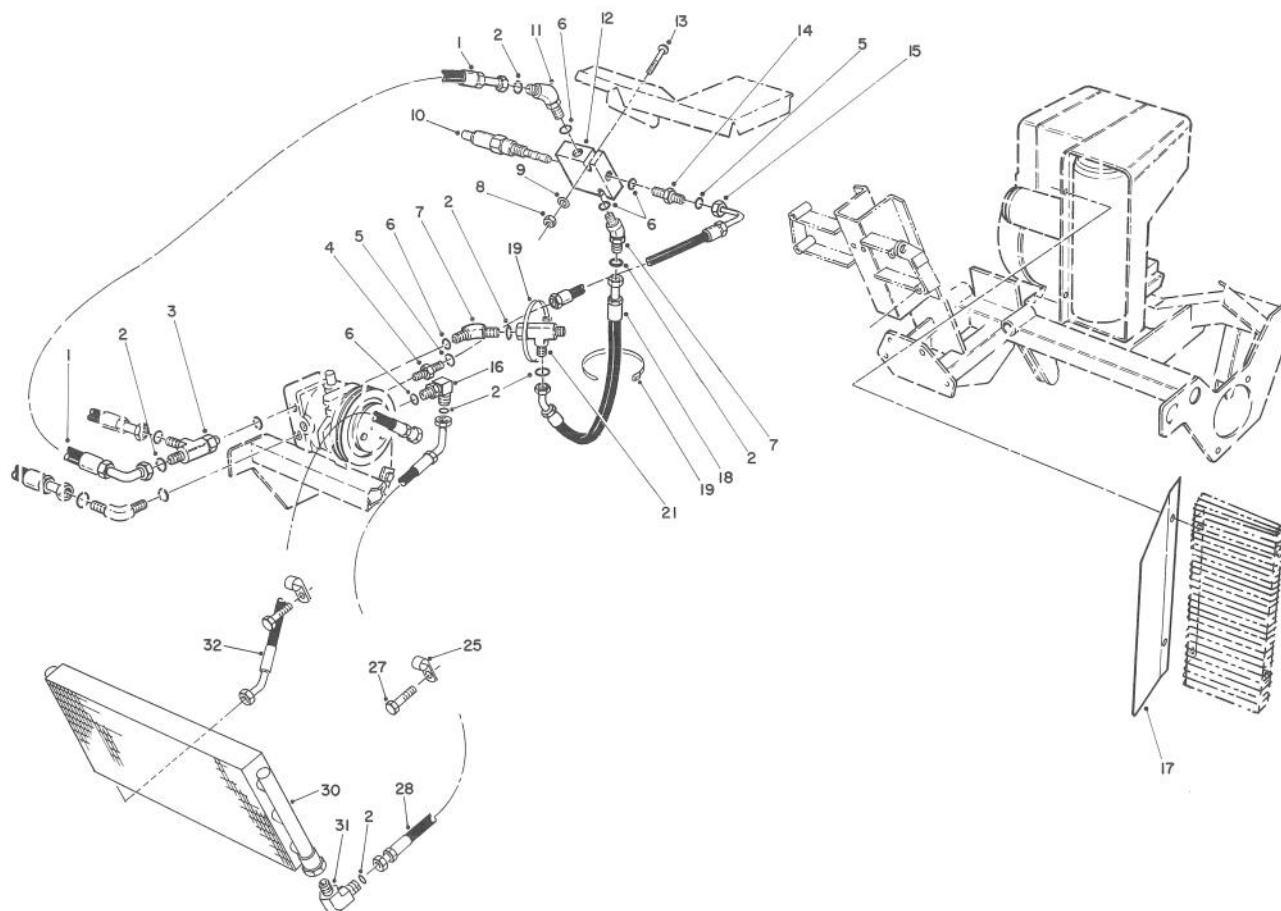
T-0269

HYDRAULIC TANK & BATTERY ASSEMBLY

Ref. No.	Part No.	Description	No. Used
1	322-3	Screw - Cap Hex. Hd.	2
2	72-4790	Clamp - Battery	1
3	3217-6	Nut - Hex.	2
4	32103-12	Nut - Wing	2
5	3256-1	Washer - Flat	2
6	28-8080	Boot - Battery Terminal	1
7	82-4640	Battery - 12 Volt	1
8	10-8120	Bolt - Battery	2
9	76-0220	Foam - Oil Filter	1
10	76-0440	Battery Support W.A.	1
11	3256-24	Washer - Flat	2
12	28-4210	Solenoid - Starter	1
13	3254-1	Washer - Lock	2
14	3219-14	Nut - Hex.	2
15	3253-4	Washer - Lock	2
16	3218-13	Nut - Lock	2
17	76-0190	Cap - Oil	1
18	3253-21	Washer - Lock	2

Ref. No.	Part No.	Description	No. Used
19	11-0590	Screw - Cap Hex. Hd.	2
20	322-43	Screw - Cap Hex. Hd.	4
21	3256-70	Washer - Flat	4
22	32128-25	Nut - Lock	2
23	92-2408	Hose - Hydraulic	1
24	2412-34	Clamp - Hose	1
25	61-0100	Tank - Hydraulic	1
26	66-6840	Decal - Hot	1
28	61-2790	Screen - Filler	1
29	76-0240	Dipstick Assembly	1
30	32149-2	Nut - Hex.	2
31	3290-199	Nut - Speed	1
32	32108-101	Screw - Flathead	1
33	237-71	O-Ring	1
34	84-1830	Cap - Battery Vent	6
*	76-0200	Oil Cap Assembly (Incl. Ref. #9, 17, 29 & 33)	1

*Not Illustrated

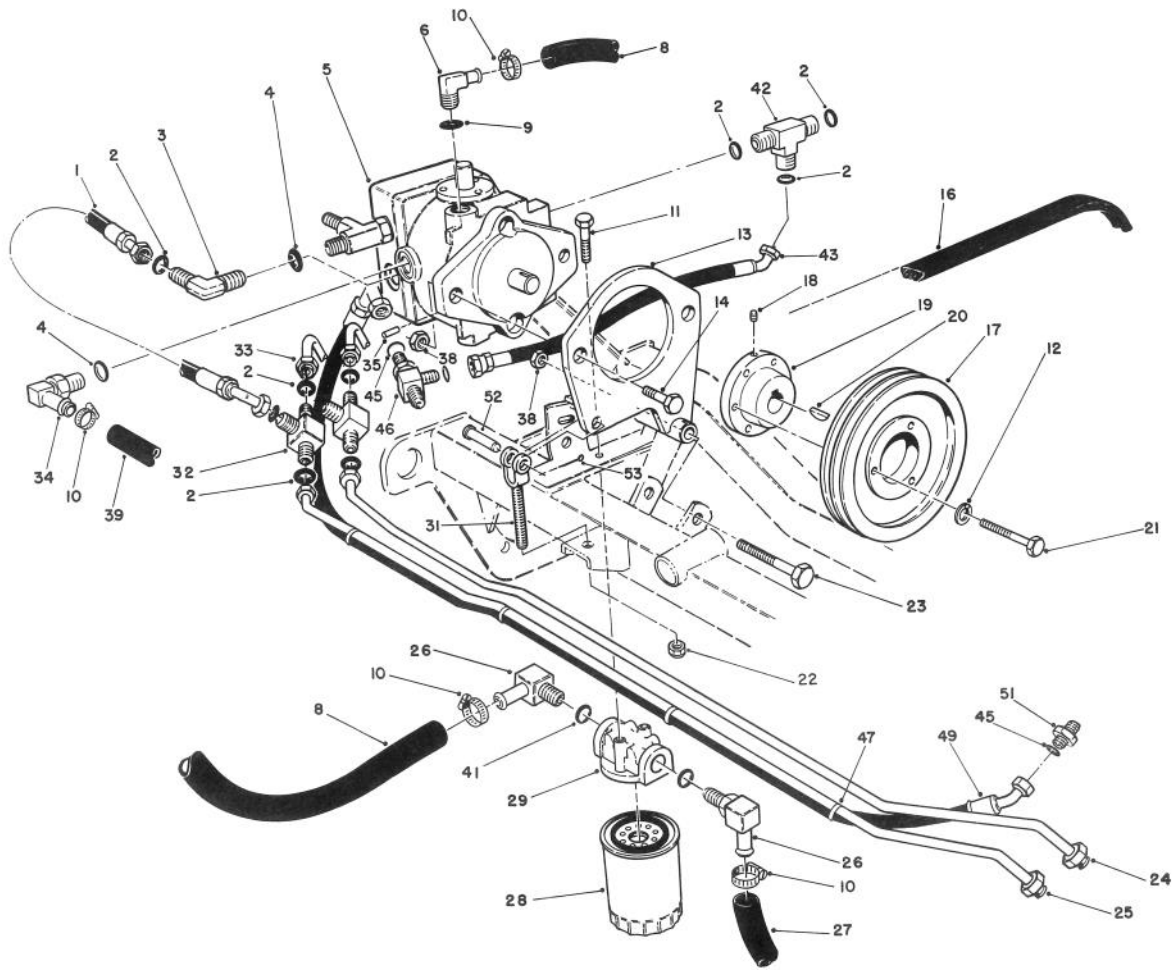


T-0886

HYDRAULIC OIL COOLER ASSEMBLY

Ref. No.	Part No.	Description	No. Used	Ref. No.	Part No.	Description	No. Used
1	76-2530	Hydraulic Hose Assembly	1	15	63-4890	Hydraulic Hose Assembly	1
2	237-30	Seal - O-Ring	8	16	340-99	Fitting - Hydraulic 90° (Incl. Ref. #2)	1
3	340-109	Fitting - Male Tee (Incl. Ref. #2)	1	17	63-8940	Shield - Cooler	1
4	340-107	Fitting - Straight (Incl. Ref. #5)	1	18	63-4880	Hydraulic Hose Assembly	1
5	237-150	Seal - O-Ring	2	19	3290-379	Tie - Cable	2
6	237-22	Seal - O-Ring	5	21	340-104	Fitting - Male/Female Tee (Incl. Ref. #2)	1
7	340-96	Fitting - 45° Elbow (Incl. Ref. #2 & 6)	2	25	2412-81	Clamp - R	2
8	32128-32	Nut - Hex. Flange	2	27	32144-69	Screw - Self Tapping	2
9	3256-22	Washer - Flat	2	28	92-2407	Hydraulic Hose Assembly	1
10	63-8790	Cartridge Valve Assembly	1	30	63-5400	Exchanger - Heat	1
11	63-8770	Fitting - 45° Orifice (Incl. Ref. #2 & 6)	1	31	340-168	Fitting - 90° Male Elbow (Incl. Ref. #2)	2
12	63-5080	Pressure Sequence Valve (Incl. Ref. #10)	1	32	92-2406	Hydraulic Hose Assembly	1
13	321-11	Screw - Cap Hex. Hd.	2	*	63-8800	Seal Kit Pressure Sequence Valve (For Ref. #10 & 12)	1
14	340-1	Fitting - Straight (Incl. Ref. #5 & 6)	1	*	56-7982	Sleeve - Protective	1

*Not Illustrated

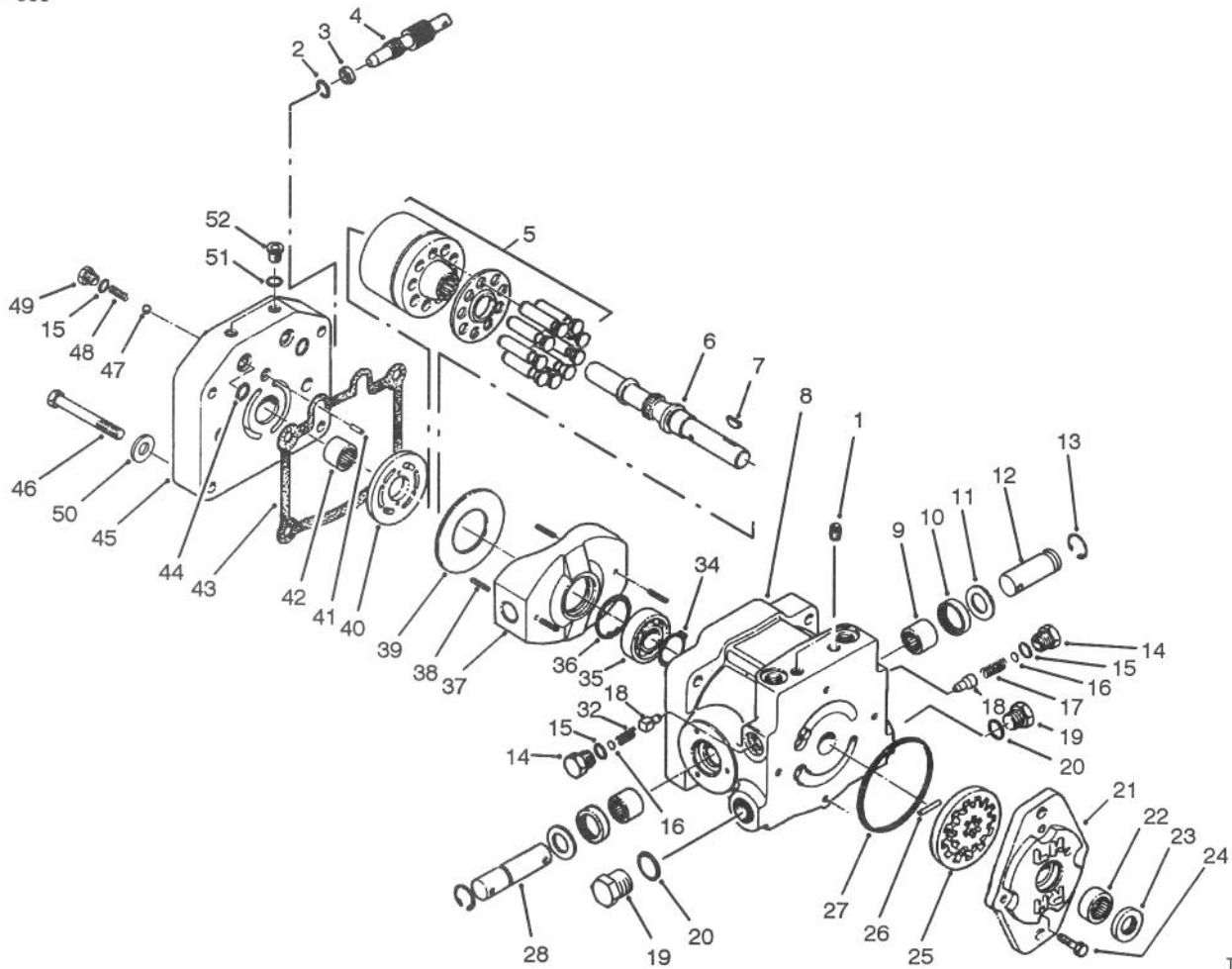


T-0271

HYDRAULIC DRIVE ASSEMBLY

Ref. No.	Part No.	Description	No. Used
1	76-2520	Hydraulic Hose	2
2	237-30	O-Ring	12
3	340-98	Fitting - 90° Elbow (Incl. Ref. #2 & 4)	1
4	237-79	O-Ring	2
5	92-9023	Pump Assembly (Incl. Ref. #20)	1
6	61-2710	Fitting - 90° Hose Elbow (Incl. Ref. #9)	1
8	61-2540	Hose - Hydraulic	1
9	237-80	O-Ring	1
10	2412-34	Clamp - Hose	5
11	3234-4	Screw - Hex Washer Hd.	2
12	3253-3	Washer - Lock	3
13	61-2230	Plate - Pump Mount	1
14	325-7	Screw - Cap Hex Hd.	2
16	92-1821	V-Belt - Pump	1
17	61-3320	Pulley - Pump	1
18	3245-9	Screw - Set	1
19	61-3350	Bushing - Taper (Incl. Ref. #12, 18 & 21)	1
20	3257-32	Key - Woodruff	1
21	321-13	Screw - Cap Hex Hd.	3
22	3296-6	Nut - Lock	1
23	325-18	Screw - Cap Hex Hd.	1
24	61-3080	Tube - Hyd. L.H. (Front)	1
25	61-3070	Tube - Hyd. L.H. (Rear)	1

Ref. No.	Part No.	Description	No. Used
26	23-8910	Fitting - 90° Hose Elbow (incl. Ref. #41)	2
27	61-2550	Hose - Hydraulic	1
28	54-0110	Filter - Oil	1
29	61-3770	Head - Filter	1
31	76-2220	Adjustment Yoke Assembly	1
32	340-102	Fitting - Tee (Incl. Ref. #2)	2
33	61-3060	Tube - Hydraulic R.H.	2
34	353-954	Fitting - 90° Elbow (Incl. Ref. #4)	1
35	32121-34	Pin - Roll	1
38	3296-23	Nut - Lock	3
39	92-2408	Hose - Hydraulic	1
41	237-117	O-Ring	2
42	340-102	Fitting - Hydraulic Tee (Incl. Ref. #2)	1
43	76-2540	Hose Assembly - Hyd.	1
45	237-30	O-Ring	3
46	340-140	Fitting - Tee	1
47	3290-379	Cable Tie	4
49	76-2550	Hose Assembly	1
50	237-78	O-Ring	1
51	340-92	Fitting	1
52	283-2	Pin - Yoke	1
53	3272-6	Pin - Cotter	1



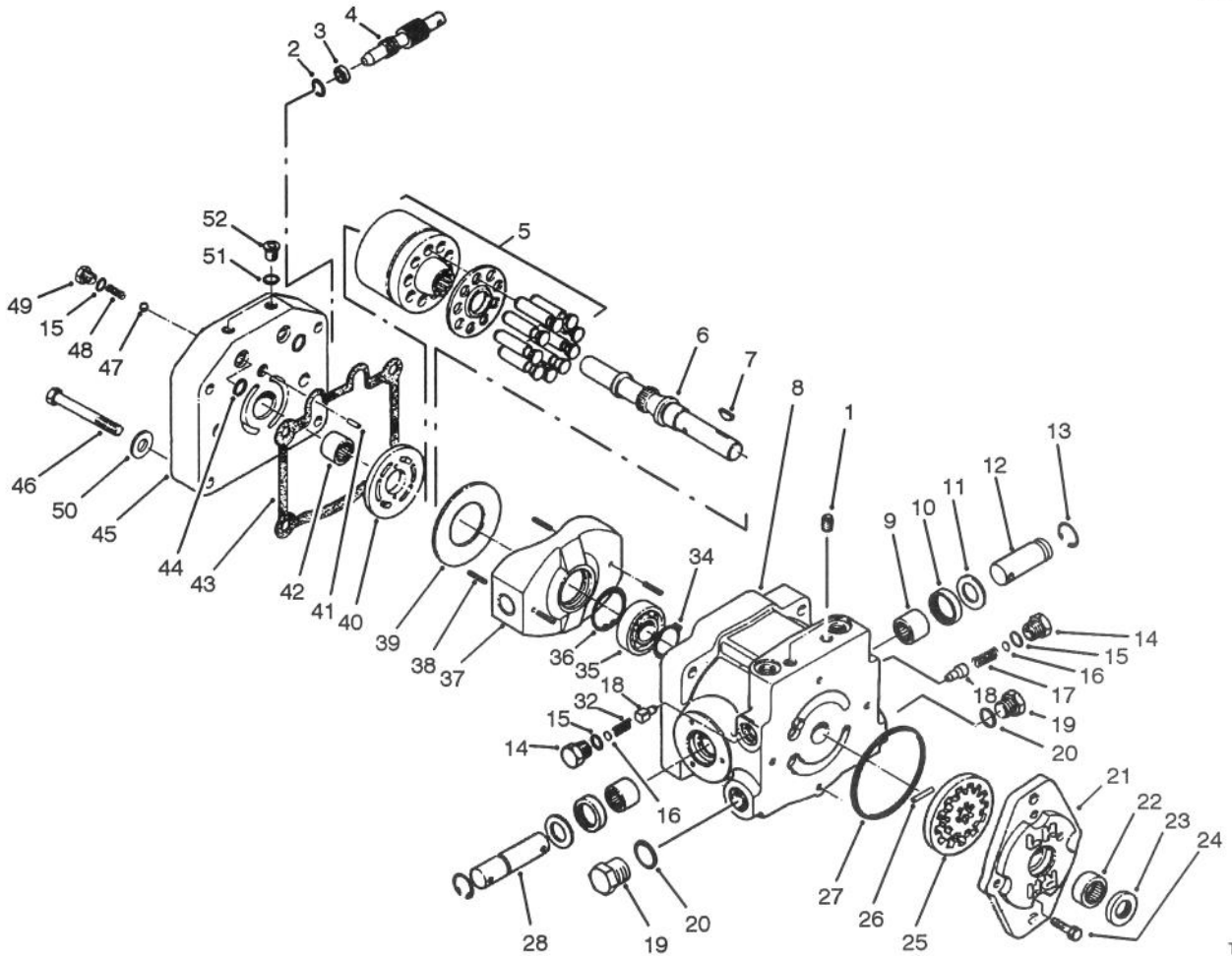
T-1809

HYDRAULIC PUMP ASSEMBLY NO. 92-9023

Ref. No.	Part No.	Description	No. Used
1	285-17	Plug - Pipe	6
2	237-22	O-Ring	1
3	25-2630	Ring	1
4	88-8220	Valve - By-Pass	1
5	48-1800	Cylinder Block Kit	1
6	67-8020	Shaft - Pump	1
7	3257-32	Key - Woodruff	1
8	92-9023	Hydraulic Pump Assembly (Complete)	1
9	252-82	Bearing - Needle	2
10	25-3210	Seal - Lip	2
11	25-2510	Washer	2
12	49-8480	Shaft - Trunion	1
13	32151-46	Ring - Retaining	2
14	25-2460	Plug	2
15	237-86	O-Ring	4
16	25-2470	Kit - Shim Pack	2
17	25-2570	Spring - Relief Valve	1
18	83-7260	Cone - Relief Valve	2
19	67-8030	Plug Assembly (Incl. Ref. #20)	2
20	67-8040	O-Ring	2
21	92-7940	Housing - Charge Pump	1
22	67-8050	Bearing - Needle	1
23	67-8060	Seal - Lip	1

Ref. No.	Part No.	Description	No. Used
24	322-4	Screw - Cap Hex. Hd.	4
25	25-2680	Gerotor Assembly	1
26	25-2530	Pin - Straight	1
27	237-95	O-Ring	1
28	28-3670	Shaft - Trunion	1
32	25-2480	Spring - Charge Relief	1
34	32120-15	Ring - Retaining	1
35	251-8	Bearing - Ball	1
36	32120-11	Ring - Retaining	1
37	25-2450	Swash/Plate	1
38	32121-91	Pin - Coiled Spring	3
39	25-2380	Plate - Thrust	1
40	25-2390	Plate - Valve	1
41	25-2430	Pin - Straight	1
42	46-8400	Bearing - Needle	1
43	25-2400	Gasket	1
44	62-4290	O-Ring	2
45		Cap - Pump End	1
46	323-11	Screw - Cap Hex. Hd.	4
47	25-2490	Ball - Check Valve	2
48	25-2640	Spring - Check Valve	2
49	25-2650	Plug - Check Valve	2
50	3256-24	Washer	1
51	92-8777	Seal - O-Ring	2

*Not Illustrated



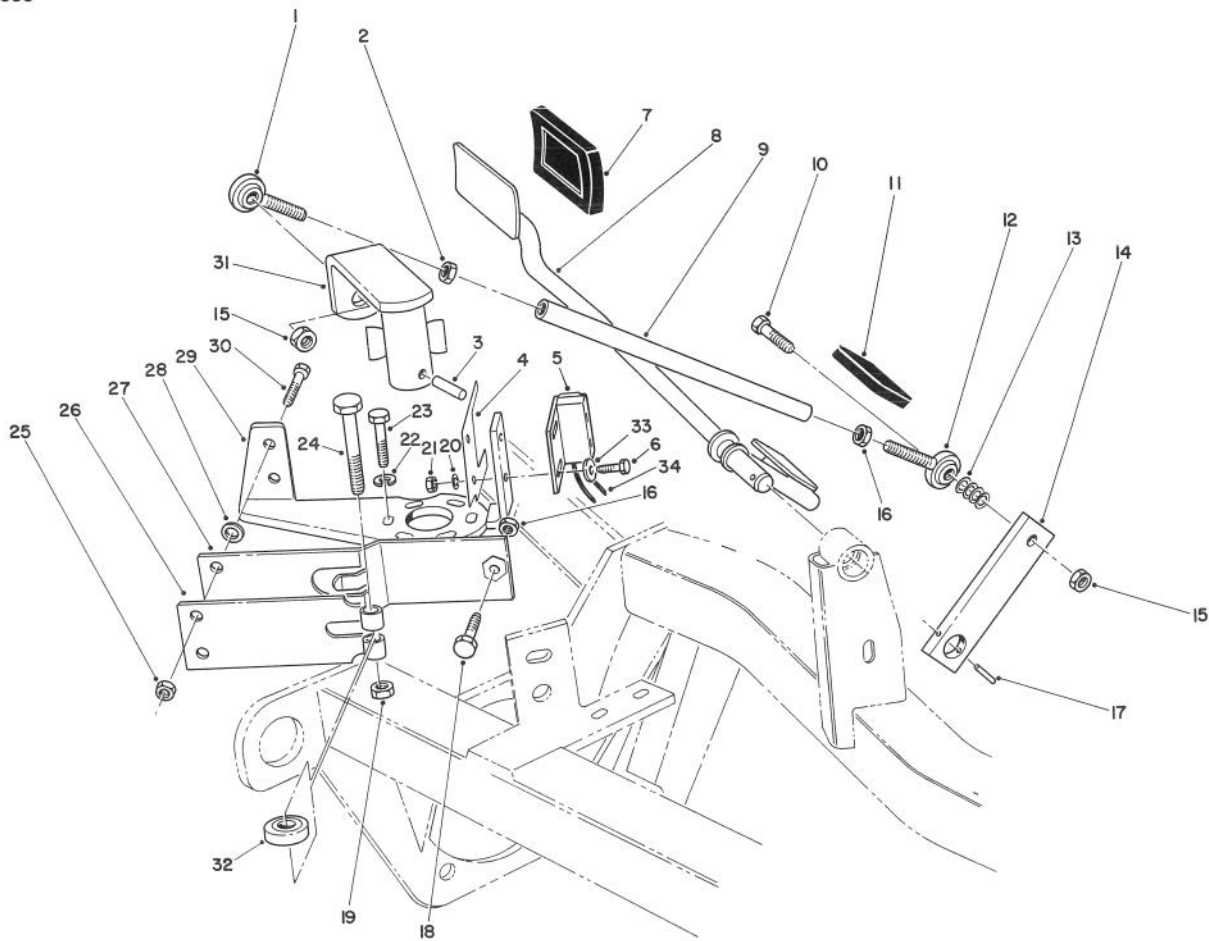
T-1809

HYDRAULIC PUMP ASSEMBLY NO. 92-9023 (Continued)

Ref. No.	Part No.	Description	No. Used
52	92-8776	Plug Assembly (Incl. Ref. #51)	2
*	49-8510	Kit - Charge Relief (Incl. Ref. #14-16, 18 & 32)	1

Ref. No.	Part No.	Description	No. Used
*	25-3180	Kit - Check Valve (Incl. Ref. #15, 47-49)	1
*	49-8520	Kit - Implement Relief (Incl. Ref. #14-18)	1

*Not Illustrated

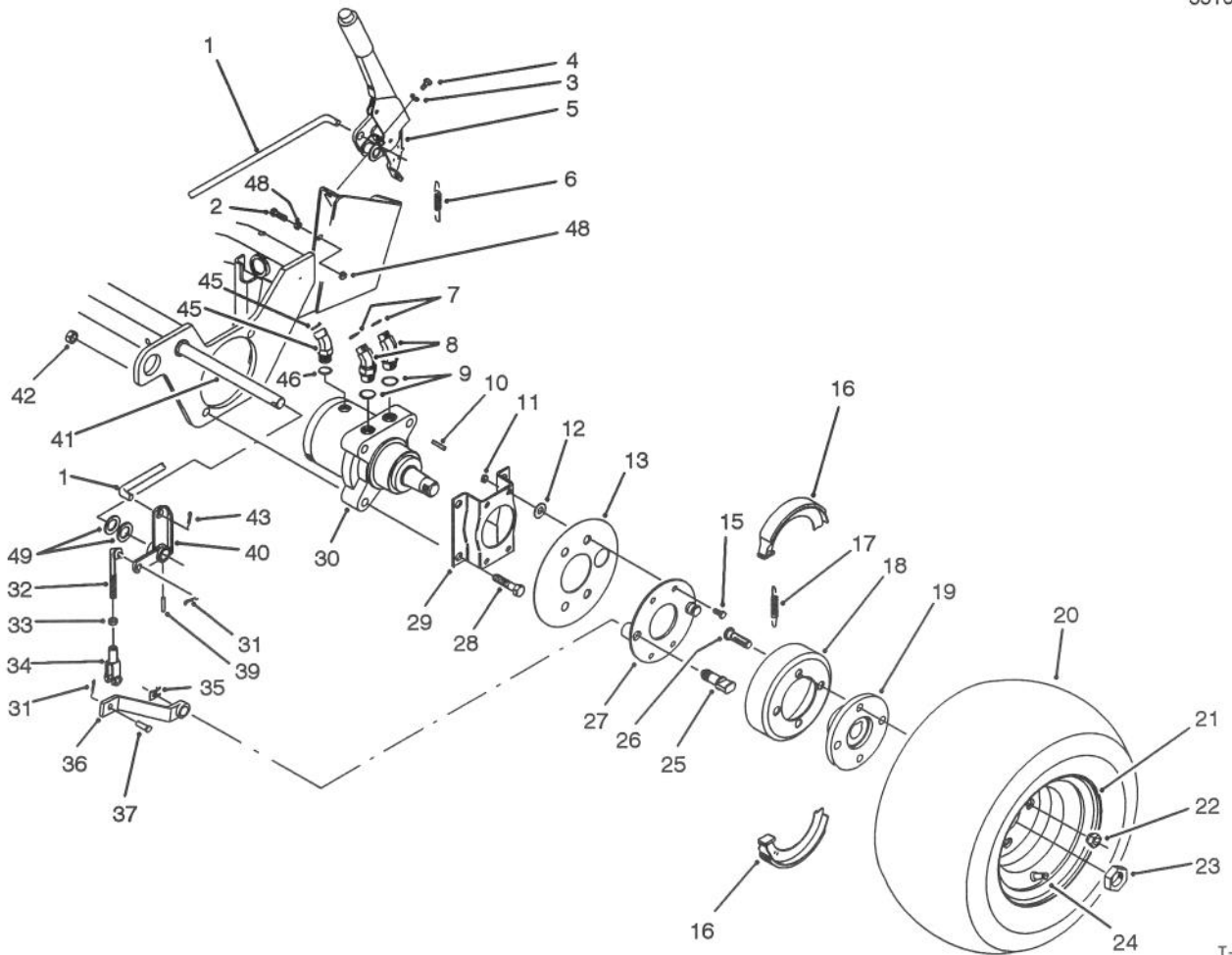


T-1069

TRACTION CONTROLS ASSEMBLY

Ref. No.	Part No.	Description	No. Used
1	2411-53	Bearing - Rod End L.H.	1
2	3220-20	Nut - Jam L.H.	1
3	32121-24	Pin - Roll	1
4	46-8810	Stop - Spring	1
5	92-7905	Neutral Switch Assembly (Incl. Ref. #34)	1
6	3249-3	Screw - Rd. Hd. Machine	2
7	74-9100	Pad - Pedal Forward	1
8	76-2170	Pedal - Traction	1
9	76-0420	Rod - Pump Control	1
10	322-7	Capscrew - Hex. Nd.	2
11	74-9110	Pad - Pedal Reverse	1
12	2411-52	Bear - Rod End R.H.	1
13	3256-74	Washer - Flat	8
14	61-2610	Arm - Traction	1
15	32153-3	Nut - Lock	2
16	3220-2	Nut - Jam R.H.	1
17	32121-6	Pin - Roll	1

Ref. No.	Part No.	Description	No. Used
18	3210-7	Capscrew - Hex. Hd.	1
19	3296-29	Nut - Lock	1
20	3254-9	Washer - Lock	2
21	3217-29	Nut - Lock	2
22	3255-7	Washer - Lock	3
23	42-2040	Screw - Hex. Hd. Self Tap	3
24	322-17	Capscrew - Hex. Hd.	1
25	3296-16	Nut - Lock	2
26	29-6150	Spring - Leaf	1
27	29-6170	Spring - Extended Leaf	1
28	51-3150	Shim - Spring Arm	1
29	29-6120	Plate - Pump	1
30	321-6	Screw - Cap Hex. Hd.	2
31	61-2940	Lever - Pump	1
32	251-259	Bearing - Ball	1
33	3256-53	Washer - Flat	2
34	92-7906	Switch - Neutral	1



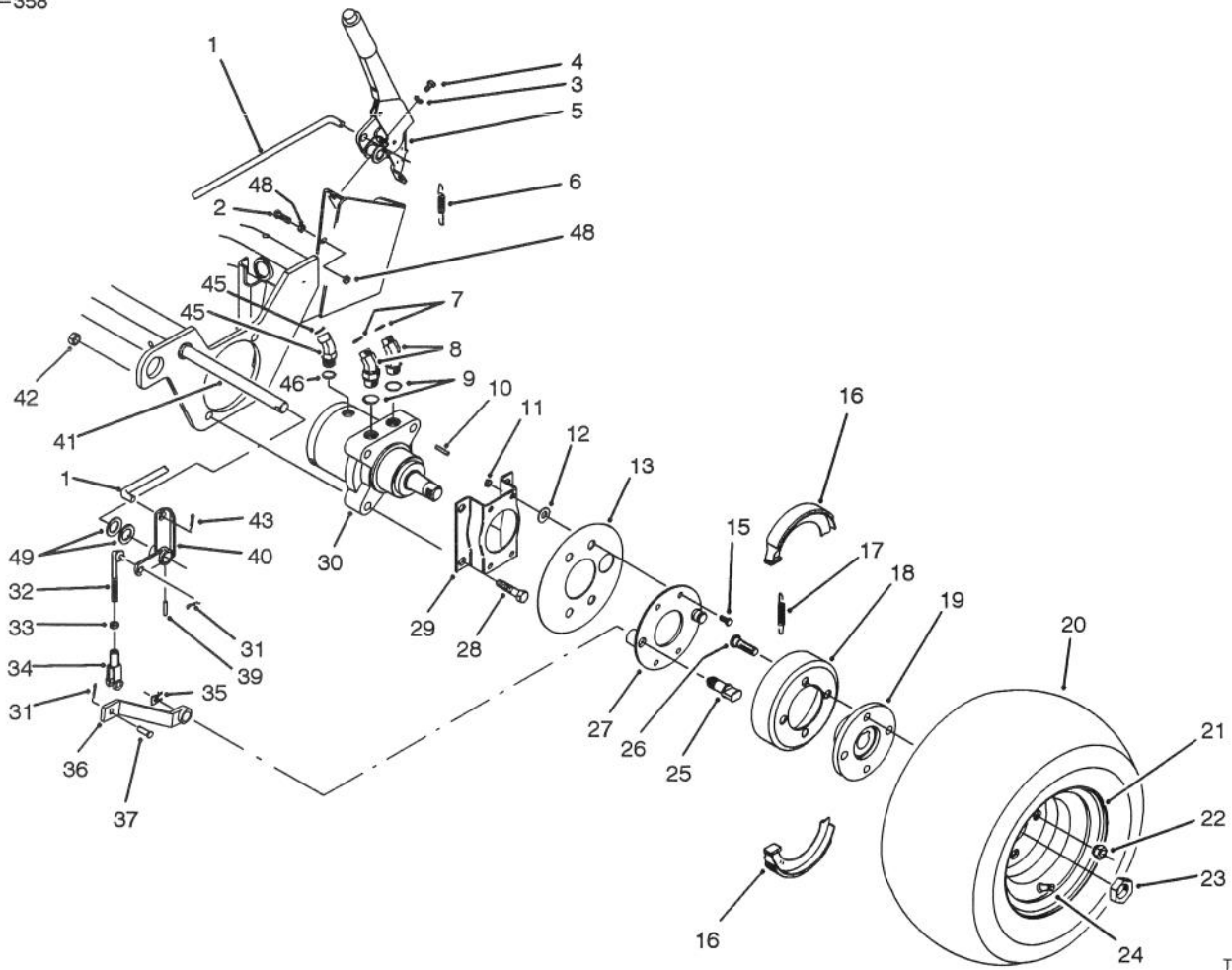
T-1416

FRONT WHEEL ASSEMBLY

Ref. No.	Part No.	Description	No. Used
1	83-9350	Rod - Parking Brake	1
2	322-17	Screw - Cap Hex. Hd.	1
3	3253-4	Washer - Lock	2
4	322-4	Screw - Hex. Washer Hd.	2
5	61-3990	Parking Brake Assembly	1
6	5-7290	Spring - Extension	1
7	237-30	Seal - O-Ring	4
8	340-89	Fitting - Hydraulic 45° (Incl. Ref. 7 & 9)	2
9	237-80	Seal - O-Ring	4
10	65-4640	Key - Square	2
11	3296-42	Nut - Lock	8
12	3256-16	Washer - Flat	8
13	83-9340	Shield - Grass	2
14	3253-3	Washer - Lock	8
15	321-5	Screw - Cap Hex. Hd.	8
16	70-9840	Shoe - Brake	4
17	70-9880	Spring - Extension	4
18	10-6821	Brake Drum Assembly (Incl. Ref. #19 & 26)	2
19	10-6870	Hub - Wheel	2
20	231-127	Tire	2
21	217-60	Rim	2

Ref. No.	Part No.	Description	No. Used
22	242-50	Nut - Lug	8
23	26-3790	Nut - Lock	2
24	232-27	Valve - Stem	2
25	70-9860	Pin - Pivot Brake	2
26	85-6540	Stud - Drive	8
27	70-9870	Plate - Brake	2
28	325-11	Screw - Cap Hex. Hd.	8
29	84-2000	Bracket - Brake	2
30	66-5291	Hydraulic Motor Assembly (Incl. Ref. #10)	2
31	3272-6	Pin - Cotter	4
32	84-1990	Rod - Adjusting	2
33	3220-2	Nut - Jam	2
34	282-2	Clevis	2
35	70-9850	Clip - Retaining	2
36	83-9250	Lever - Brake	2
37	283-1	Pin - Clevis	2
39	32121-79	Pin - Roll	2
40	83-9270	Pivot - Brake L.H.	1
*	83-9310	Pivot - Brake R.H.	1
41	83-9330	Shaft - Brake	1
42	3296-23	Nut - Lock	8
43	3272-7	Pin - Cotter	1

*Not Illustrated



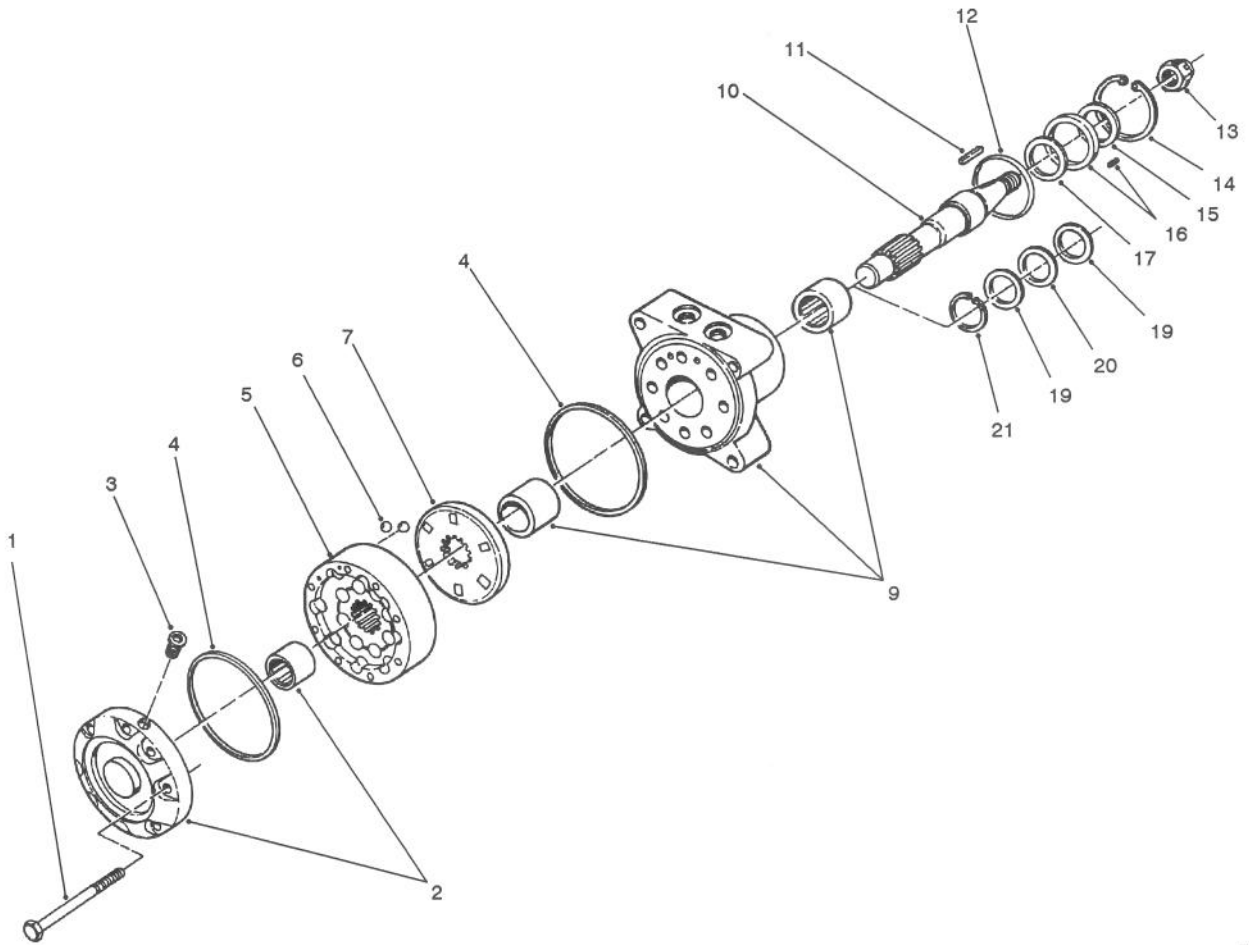
T-1416

FRONT WHEEL ASSEMBLY (Continued)

Ref. No.	Part No.	Description	No. Used
45	340-103	Fitting - Hydraulic 45° (Incl. Ref. #46 & 47) (For Left Wheel Motor)	1
*	340-140	Fitting - Hydraulic Tee (Incl. Ref. #46 & 47) (For Right Wheel Motor)	1
46	237-78	Seal - O-Ring	2

Ref. No.	Part No.	Description	No. Used
47	237-21	Seal - O-Ring	3
48	32128-20	Nut - Lock	2
49	3-6498	Washer	4
*	71-1500	Brake Assembly (Incl. Ref. #16, 17, 25, 27 & 35)	2

*Not Illustrated



T-0274

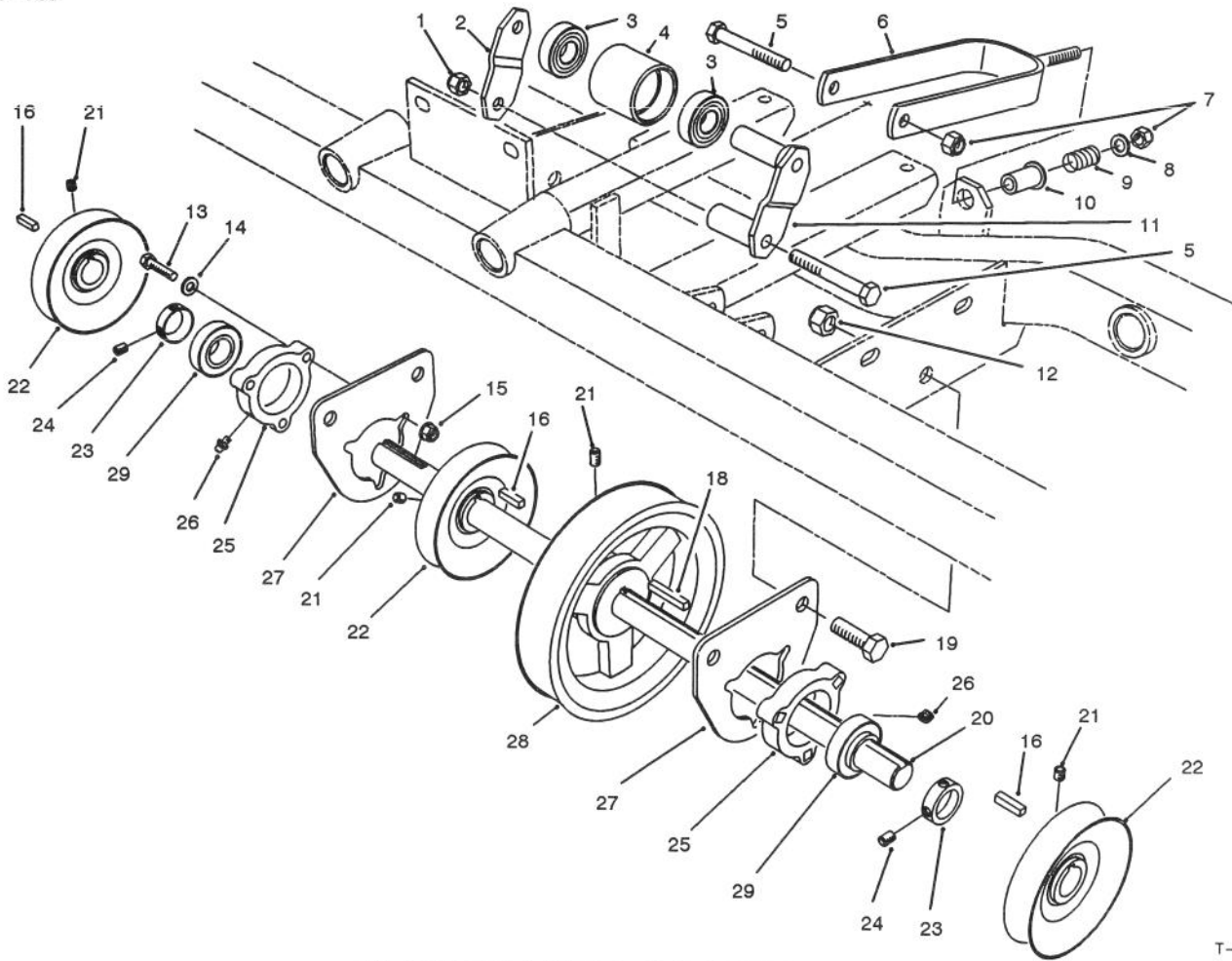
HYDRAULIC DRIVE MOTOR ASSEMBLY NO. 66-5291

Ref. No.	Part No.	Description	No. Used
1	65-4580	Screw - Cap Hex Hd.	8
2	65-4680	Cover & Bearing Assembly	1
3	65-4560	Plug - Hex (Hollow)	1
4	65-4570	Seal - Square Ring	2
5	66-6110	IGR Assembly	1
6	65-4550	Valve - Check Ball	2
7	70-8150	Plate - Valve	1
9	65-4670	Body & Bearing Assembly	1
10	92-1157	Shaft	1
11	3272-15	Key - Woodruff	1
12	65-4620	Seal - O-Ring	1

Ref. No.	Part No.	Description	No. Used
14	65-4500	Seal - Snap Ring	1
†15		Seal - Dust	1
†16		Retainer/Pin	1
†17		Seal - Lip	1
*	76-2350	Seal/Retainer Assembly (Incl. Ref. #15-17)	1
19	65-4600	Washer - Thrust	2
20	65-4610	Bearing - Thrust	1
21	65-4590	Ring - Snap	1
*	76-2360	Body Seal Kit (Incl. Ref. #4,12 & 15-17)	1

*Not Illustrated

†Not available from Toro as a replacement part.



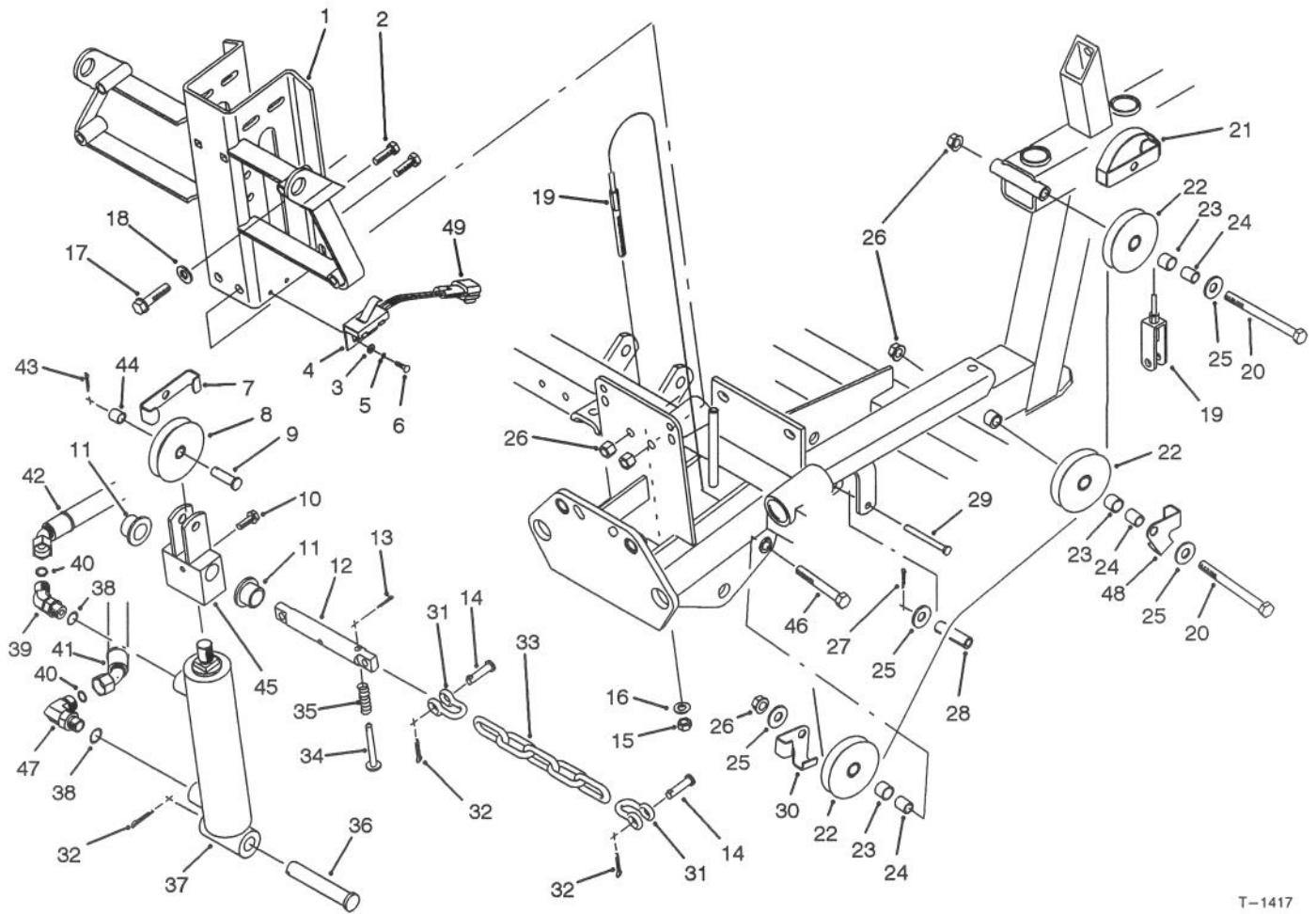
T-0276

JACKSHAFT ASSEMBLY

Ref. No.	Part No.	Description	No. Used
1	3296-39	Nut - Lock	2
2	67-7911	Strap - Idler Bracket	1
3	38-7820	Bearing - Idler	2
4	67-7750	Pulley - Idler	1
5	323-15	Screw - Cap Hex. Hd.	2
6	67-7890	Belt Tensioner W.A.	1
7	3296-59	Nut - Lock	1
8	3256-24	Washer - Flat	1
9	83-9690	Spring - Compression	1
10	83-9810	Bushing - Flange	1
11	67-7870	Idler Bracket W.A.	1
12	3296-23	Nut - Lock	4
13	322-17	Screw - Cap Hex. Hd.	6
14	3256-23	Washer - Flat	6
15	32128-25	Nut - Flange Lock	6
16	5-7280	Key - Square (Short)	3

Ref. No.	Part No.	Description	No. Used
18	67-7490	Key - Square (Long)	1
19	325-4	Screw - Cap Hex. Hd.	4
20	83-7820	Shaft - Drive	1
21	3242-4	Screw - Set	8
22	61-0140	Pulley - Jackshaft	3
23	251-77	Collar - Locking (Incl. Ref. #24)	2
24	3245-35	Screw - Set	4
25	76-2460	Bearing Assembly (Incl. Ref. #23, 26 & 29)	2
26	302-5	Fitting - Grease	2
27	61-2350	Mount - Bearing	2
28	61-0070	Pulley - Poly V	1
29	251-337	Bearing	2
*	13-1279	Idler Pulley Assembly (Incl. Ref. #3, 4 & 11)	1

*Not Illustrated

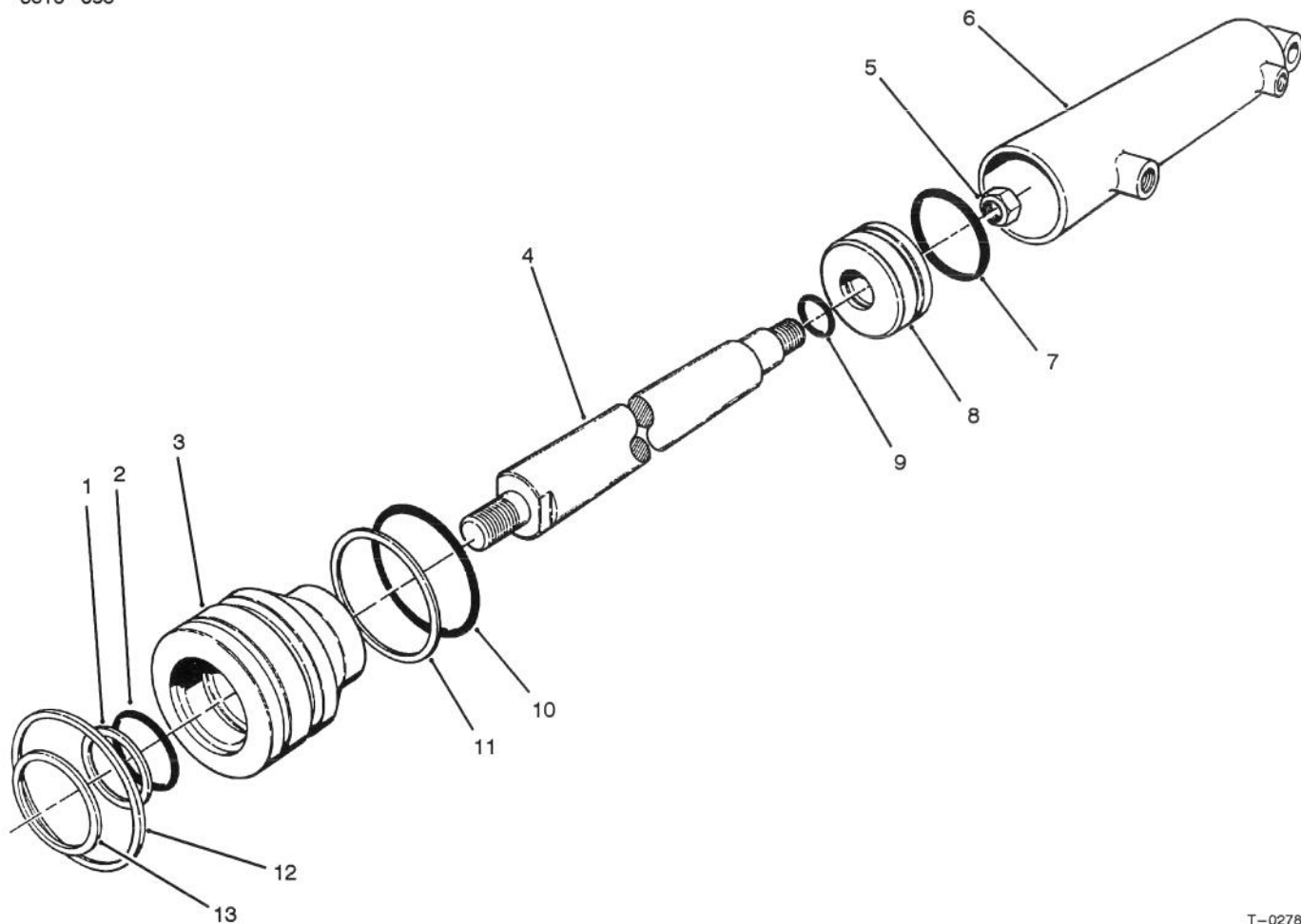


T-1417

CUTTING UNIT LIFT ASSEMBLY

Ref. No.	Part No.	Description	No. Used
1	92-1840	Bracket - Cylinder & Cooler	1
2	323-6	Screw - Cap Hex. Hd.	2
3	3256-53	Washer - Flat	2
4	92-7905	Lift Switch Assembly (Incl. Ref. #49)	1
5	3254-9	Washer - Lock Internal	2
6	3249-5	Screw - Round Hd.	2
7	5-2655	Keeper - Cable	1
8	5-2653	Cable Pulley Assembly (Incl. Ref. #44)	1
9	283-42	Pin - Clevis	1
10	3234-4	Screw - Hex. Washer Hd.	1
11	84-8440	Bushing - Flange	2
12	72-4190	Pin - Cylinder Guide	1
13	3272-4	Pin - Cotter	1
14	283-6	Pin - Clevis	4
15	3296-4	Nut - Lock	1
16	3256-23	Washer - Flat	1
17	11-0590	Screw - Thread Forming	4
18	3256-24	Washer - Flat	4
19	61-3260	Cable - Lift	1
20	323-23	Screw - Cap Hex. Hd.	2
21	61-3240	Keeper - Cable	1
22	61-3210	Cable Pulley Assembly (Incl. Ref. #23)	3
23	256-1	Bushing - Sleeve	3
24	61-3230	Spacer	3

Ref. No.	Part No.	Description	No. Used
25	3256-4	Washer - Flat	4
26	3296-39	Nut - Flange Lock	5
27	3272-4	Pin - Cotter	1
28	32121-124	Pin - Roll	1
29	283-79	Pin - Clevis	1
30	5-2656	Keeper - Cable	1
31	282-4	Clevis	4
32	3272-11	Pin - Cotter	5
33	61-3830	Chain - Lift	2
34	71-1380	Pin - Spring	1
35	71-1370	Spring - Compression	1
36	283-78	Pin - Clevis	1
37	76-0020	Hydraulic Cylinder Assembly	1
38	237-42	Seal - O-Ring	2
39	340-87	Fitting - Hydraulic 45° (Incl. Ref. #38 & 40)	1
40	237-22	Seal - O-Ring	2
41	61-2500	Hose - Hydraulic	1
42	61-2490	Hose - Hydraulic	1
43	3272-6	Pin - Cotter	1
44	61-2430	Hub - Lift	1
45	256-2	Bushing - Sleeve	1
46	323-13	Screw - Cap Hex. Hd.	1
47	340-77	Fitting - Hydraulic 90° (Incl. Ref. #38 & 40)	1
48	83-9130	Keeper - Cable	1
49	92-7906	Switch - Lift	1



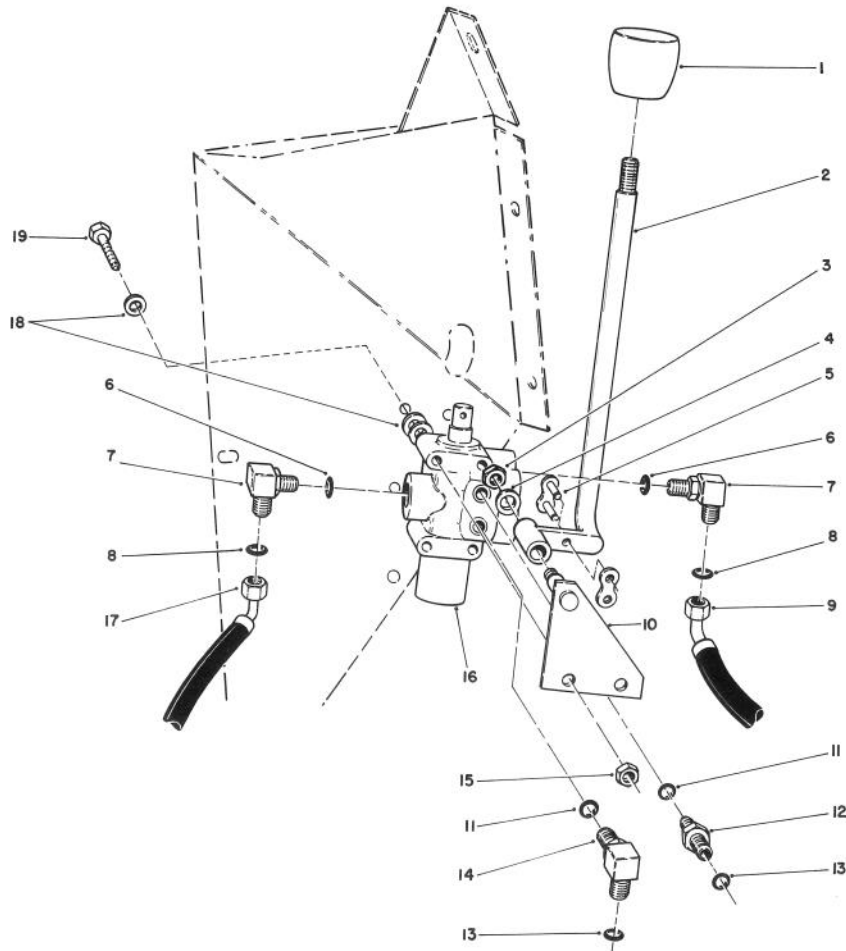
T-0278

HYDRAULIC CYLINDER ASSEMBLY NO. 76-0020

Ref. No.	Part No.	Description	No. Used
1		Washer - Backup	1
2		O-Ring	1
3	76-0090	Head	1
4	76-2320	Shaft	1
5	76-2330	Nut - Lock	1
6		Barrel	1
7		Uniring	1
8	76-0040	Piston	1

Ref. No.	Part No.	Description	No. Used
9		O-Ring	1
10		O-Ring	1
11		Washer - Backup	1
12	76-0050	Ring - Retaining	1
13		Seal-Dust	1
*	76-0030	Repair Kit (Incl. Ref. #1-2, 7, 9-11 & 13)	1

*Not Illustrated

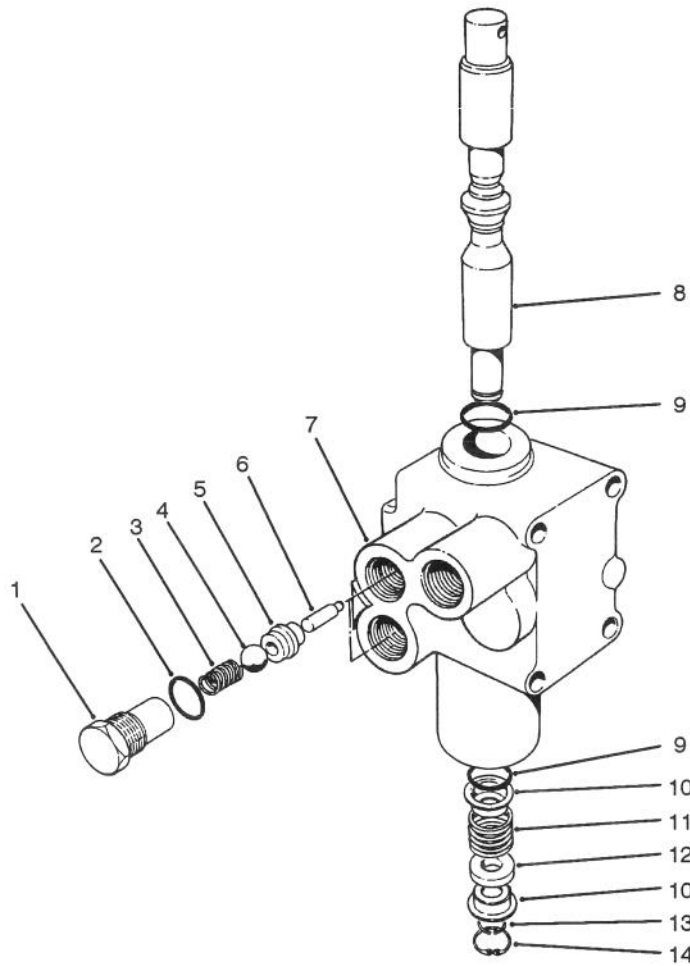


T-0279

CUTTING UNIT LIFT VALVE INSTALLATION ASSEMBLY

Ref. No.	Part No.	Description	No. Used
1	233-37	Knob	1
2	85-5160	Lever - Lift Valve	1
3	3296-39	Nut - Lock	1
4	3256-24	Washer	1
5	2710-16	Link - Connecting	1
6	237-79	Seal - O-Ring	1
7	340-99	Fitting - Hydraulic 90° (Incl. Ref. #6 & 8)	2
8	237-22	Seal - O-Ring	2
9	61-2510	Hose - Hydraulic	1
10	61-2720	Bracket - Lever	1

Ref. No.	Part No.	Description	No. Used
11	237-78	Seal - O-Ring	2
12	340-88	Fitting - Hydraulic Straight (Incl. Ref. #11 & 13)	1
13	237-21	Seal - O-Ring	2
14	340-97	Fitting - Hydraulic 90° (Incl. Ref. #14 & 16)	1
15	3296-16	Nut - Lock	3
16	43-1950	Valve - Hydraulic	1
17	61-2520	Hose - Hydraulic	1
18	3256-22	Washer - Flat	9
19	321-23	Screw - Cap Hex. Hd.	3

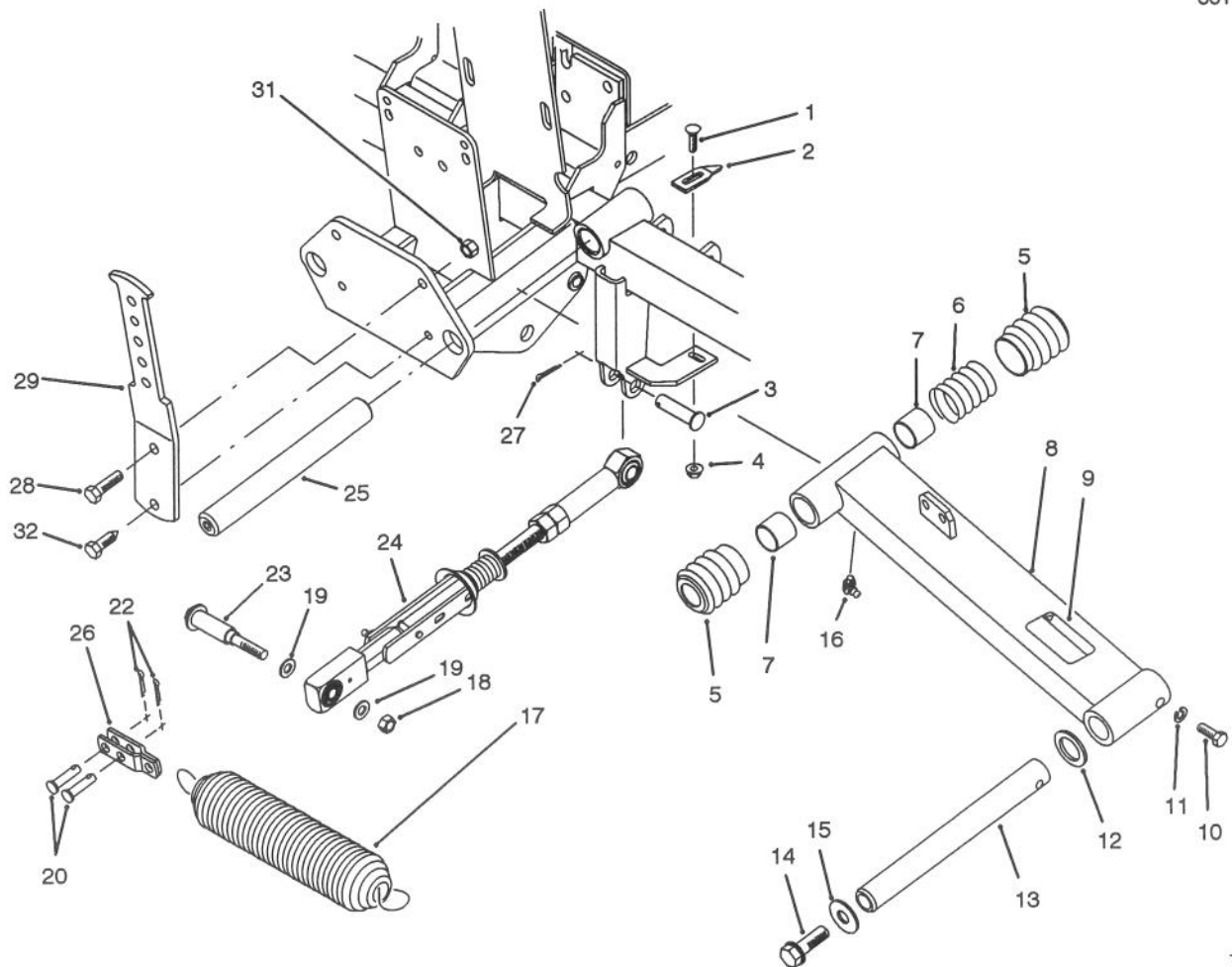


T-0280

CONTROL VALVE ASSEMBLY NO. 43-1950

Ref. No.	Part No.	Description	No. Used
1	22-8330	Plug	2
2	237-42	O-Ring	2
3	22-8340	Spring	2
4	22-8350	Ball	2
5	22-8370	Seat - Check Valve	2
6	22-8360	Pin - Cam	2
7		Body	1

Ref. No.	Part No.	Description	No. Used
8	22-8420	Spool	1
9	22-8500	O-Ring	2
10	22-8380	Retainer - Spring	2
11	22-8410	Spring	1
12	23-3030	Spacer	1
13	22-8480	Snap Ring - Spool	1
14	22-8490	Snap Ring	1



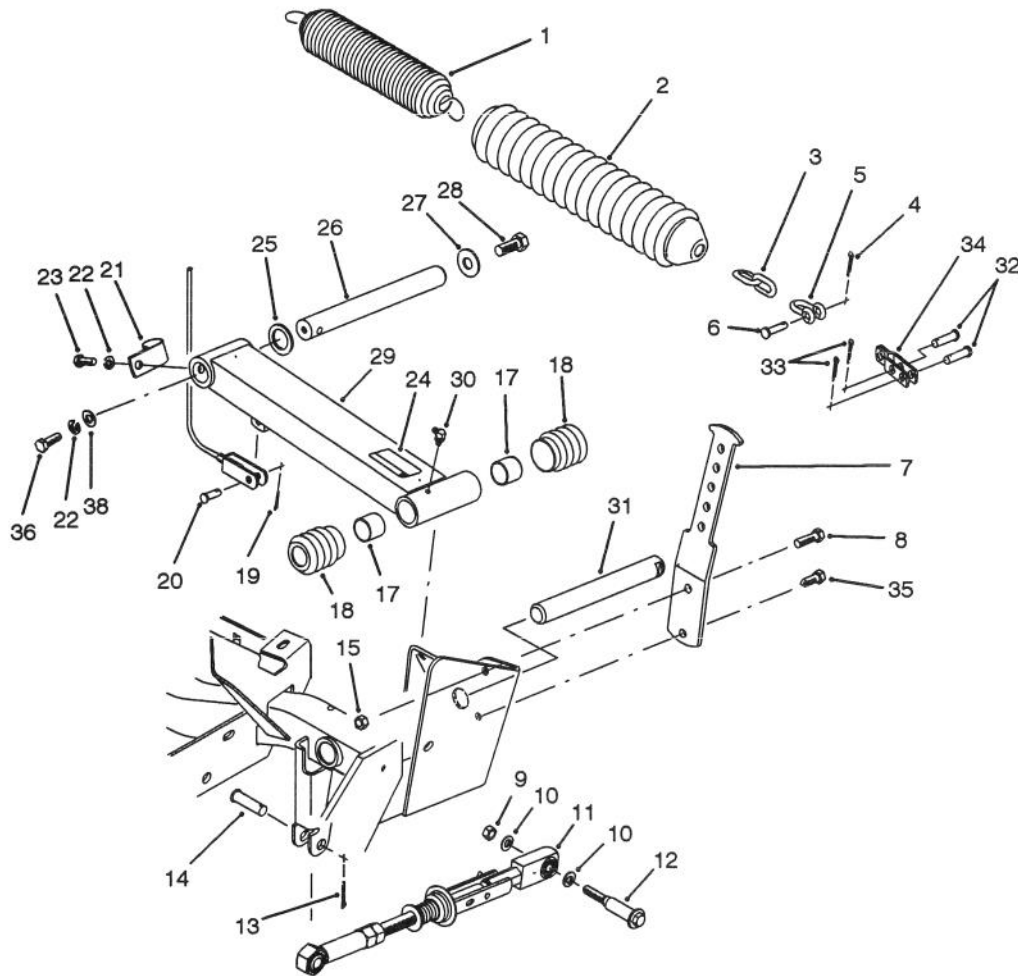
T-1419

FRONT CUTTING UNIT LIFT ARM ASSEMBLY

Ref. No.	Part No.	Description	No. Used
1	3229-1	Bolt - Carriage	2
2	76-2430	Scraper - Pulley	2
3	283-40	Pin - Clevis	2
4	32128-33	Nut - Flange Lock	2
5	61-7250	Boot	4
6	61-3270	Spring - Compression	2
7	3-0348	Bushing - Sleeve	4
8	16-1159	Lift Arm Assembly L.H. (Incl. Ref. #7, 9 & 16)	1
*	16-1169	Lift Arm Assembly R.H. (Incl. Ref. #7, 9 & 16)	1
9	55-4300	Decal - Warning	2
10	322-4	Screw - Cap Hex. Hd.	2
11	3253-4	Washer - Lock	2
12	256-115	Washer - Thrust	2
13	92-1815	Rod - Pivot	2
14	3234-32	Screw - Hex. Flange Hd.	2

Ref. No.	Part No.	Description	No. Used
15	3256-6	Washer - Flat	2
16	302-60	Fitting - Grease	2
17	5-0743	Spring - Extension	2
18	3296-59	Nut - Lock	2
19	3256-45	Washer - Flat	4
20	283-75	Pin - Clevis	4
22	3272-10	Pin - Cotter	4
23	76-0370	Bolt - Shoulder	2
24	83-7900	Belt Tensioner Assembly	2
25	92-1812	Shaft - Lift Pivot	2
26	92-1822	Shackle	2
27	3272-13	Pin - Cotter	2
28	323-7	Screw - Cap Hex. Hd.	2
29	92-1818	Arm - Tension	2
31	3296-39	Nut - Lock	2
32	32104-6	Screw - Cap Hex. Hd.	2

*Not Illustrated

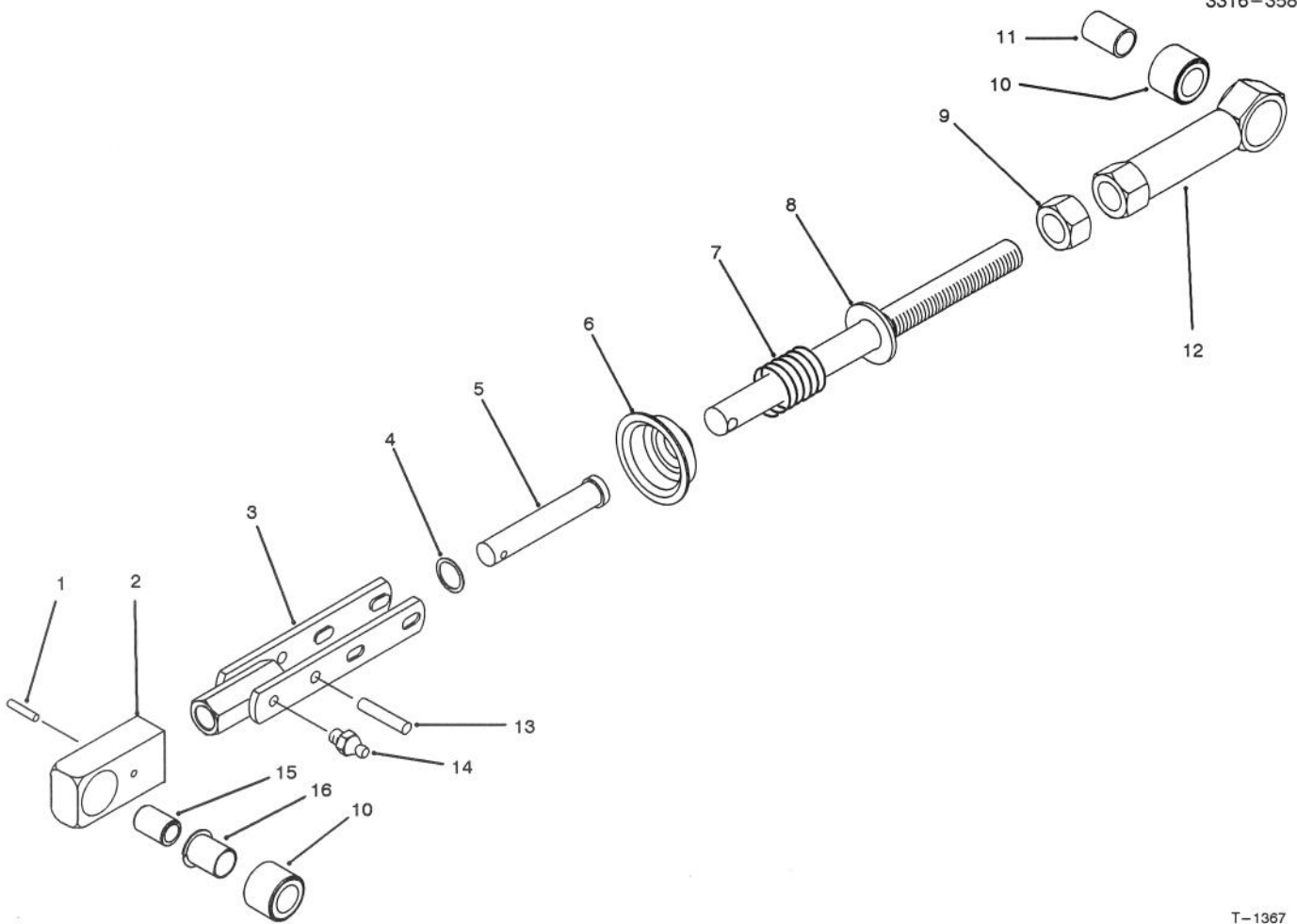


T-1366A

REAR CUTTING UNIT LIFT ARM ASSEMBLY

Ref. No.	Part No.	Description	No. Used
1	5-0743	Spring - Extension	1
2	62-7240	Cover - Spring	1
3	62-7300	Chain	1
4	3272-11	Pin - Cotter	1
5	282-4	Clevis	1
6	283-6	Pin - Clevis	1
7	92-1818	Arm - Tension	1
8	323-7	Screw - Cap Hex. Hd.	1
9	3296-59	Nut - Lock	2
10	3256-45	Washer - Flat	4
11	83-7900	Belt Tensioner Assembly	2
12	76-0370	Bolt - Shoulder	2
13	3272-13	Pin - Cotter	2
14	283-40	Pin - Clevis	2
15	3296-39	Nut - Lock	1
17	3-0348	Bushing - Sleeve	2
18	62-7250	Boot	2
19	3272-6	Pin - Cotter	1
20	283-1	Pin - Clevis	1

Ref. No.	Part No.	Description	No. Used
21	18-2970	Clamp - R	1
22	3253-4	Washer - Lock	2
23	322-4	Screw - Cap Hex. Hd.	1
24	55-4300	Decal - Warning	1
25	256-115	Washer - Thrust	1
26	92-1815	Rod - Pivot	1
27	3256-6	Washer - Flat	1
28	3234-32	Screw - Cap Hex. Hd.	1
29	16-1089	Lift Arm Assembly (Incl. Ref. #17, 24 & 30)	1
30	302-60	Fitting - Grease	1
31	92-1812	Shaft - Lift Pivot	1
32	283-75	Pin - Clevis	2
33	3272-10	Pin - Cotter	2
34	92-1822	Shackle	1
35	32104-6	Screw - Cap Hex. Hd.	1
36	322-26	Screw - Cap Hex. Hd.	1
38	3256-57	Washer - Flat	1



T-1367

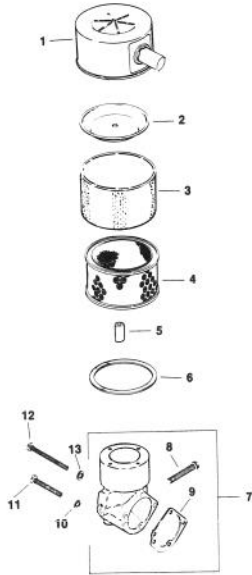
BELT TENSIONER ASSEMBLY NO. 83-7900

Ref. No.	Part No.	Description	No. Used
1	32121-23	Pin - Roll	1
2	76-0350	Housing - Bushing	1
3	83-7930	Yoke	1
4	3256-54	Washer - Flat	1
5	283-55	Pin - Clevis	1
6	76-0360	Cup - Retainer	1
7	76-0410	Spring - Compression	1
8	83-7910	Rod	1

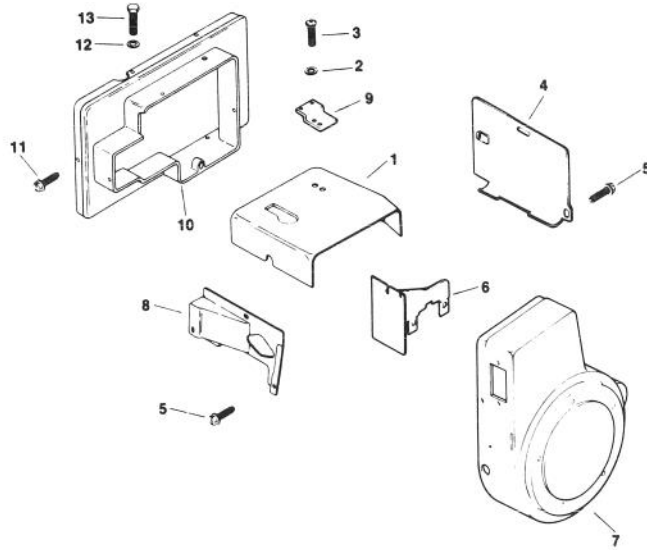
Ref. No.	Part No.	Description	No. Used
9	3218-6	Nut - Jam	1
10	56-9510	Bushing Assembly	2
11	256-173	Bushing - Sleeve	1
12	76-0300	Housing - Bushing	1
13	32121-9	Pin - Roll	1
14	302-5	Fitting - Grease	1
15	76-0390	Spacer	1
16	56-9520	Bushing - Nyliner	1

ENGINE KOHLER MODEL NO. M16QS SPEC NO. 711563

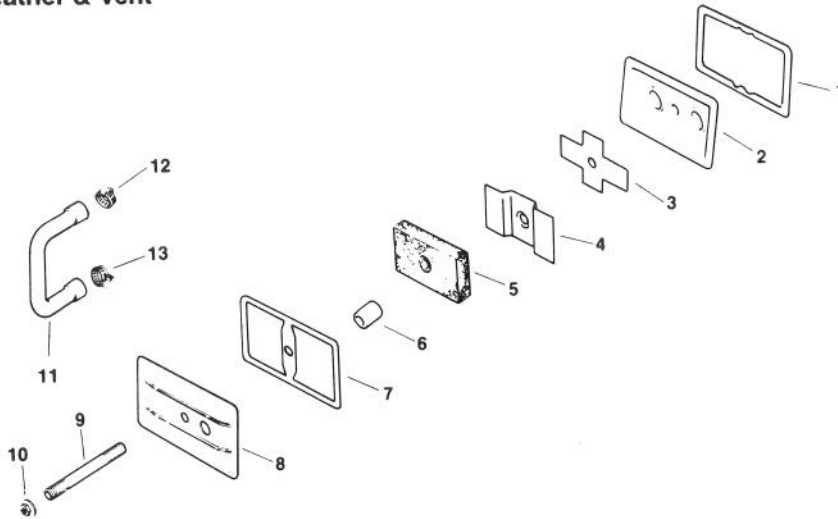
Air Intake



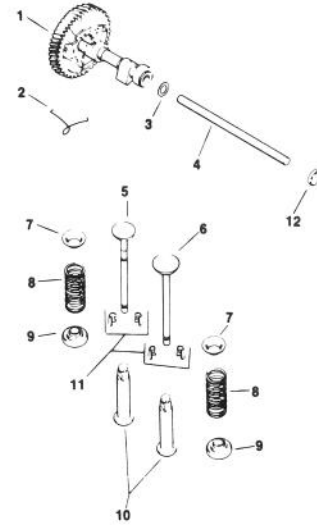
Baffles & Shroud



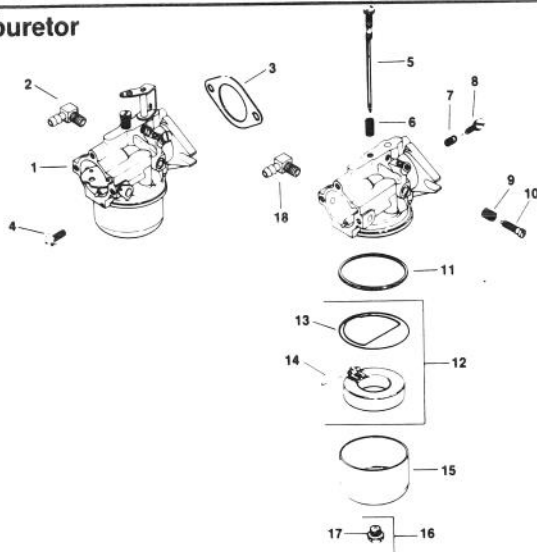
Breather & Vent



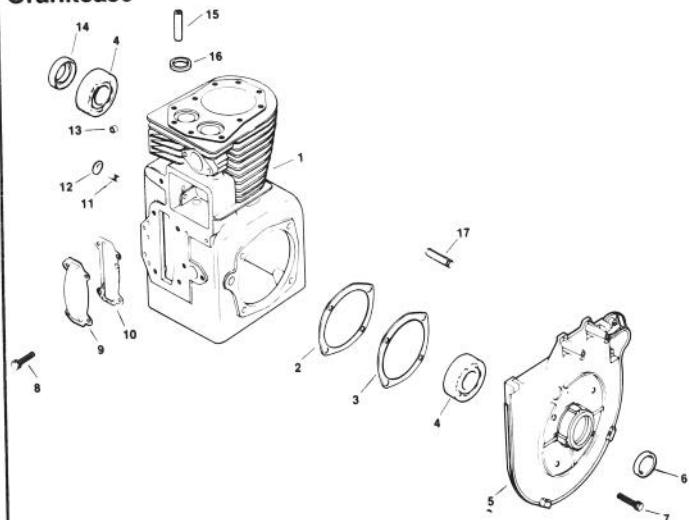
Camshaft & Valves



Carburetor



Crankcase



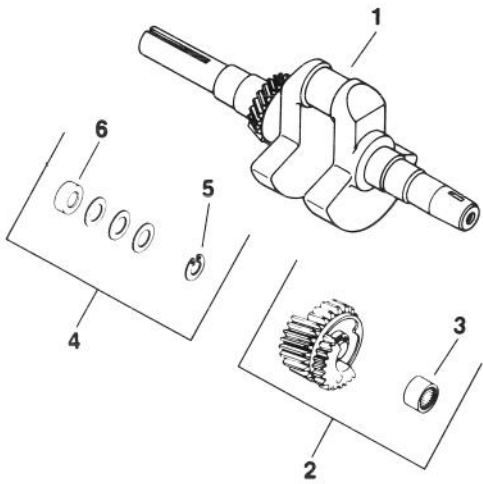
ENGINE KOHLER MODEL NO. M16QS SPEC NO. 711563

Ref. No.	Part No.	Description	No. Used
Air Intake			
1	52 096 26	Cover – Air Cleaner	1
2	52 082 04	Cover – Element	1
3	45 083 01	Precleaner	1
4	45 083 02	Element – Air Cleaner	1
5	231032	Seal	1
6	47 041 11	Gasket – Base	1
7	48 754 03	Kit – Air Cleaner Elbow (Incl. Ref. #8 & 9)	1
8	52 086 11	Screw – Self Tap	1
9	25 041 06	Gasket – Air Cleaner Elbow	1
10	X-22-9	Washer – I.T.L.W.	2
11	X-50-57	Screw – Pan Hd. Mach.	2
12	X-50-37	Screw – Pan Hd. Mach.	1
13	X-25-79	Washer – Plain	1
Baffles & Shroud			
1	45 063 08	Baffle – Head	1
2	X-25-53	Washer – Plain	1
3	47 086 08	Screw – Pozidriv T.H.	1
4	47 063 10	Baffle – Cylinder	1
5	52 086 11	Screw – Hex Wash. Hd.	6
6	47 063 07	Baffle – Inner	1
7	47 027 42	Housing – Blower	1
8	47 063 06	Baffle – Side Air	1
9	47 126 23	Bracket – Duct	1
10	47 755 33	Kit – Air Duct	1
11	X-67-64	Screw – Hex Wash. Hd.	3
12	X-25-20	Washer – Plain	1
13	X-154A	Screw – H.C.	1
Breather & Vent			
1	235048	Gasket – Breather Plate	1
2	235631	Plate – Breather	1
3	235047	Reed – Breather	1
4	235117	Baffle – Breather	1
5	235118	Filter – Breather	1
6	231032	Seal – Breather	1
7	275144	Gasket – Valve Cover	1
8	275839	Cover – Valve	1
9	275220	Stud – Valve Cover	1
10	X-799-1	Palnut	1
11	47 326 02	Hose	1
12	X-426-3	Clamp – Hose	1
13	X-426-9	Clamp – Hose	1
Camshaft & Valves			
1	47 010 11	Camshaft Assembly	1
2	47 089 01	Spring – Actuating	1
3	275066	Spacer .005	A/R
	275067	Spacer.010	A/R
4	47 380 09	Pin – Camshaft	1
5	237672	Valve – Exhaust	1
6	235582	Valve – Intake	1
7	235011	Retainer – Upper Spring	2
8	235168	Spring – Valve	2
9	52 413 01	Rotator – Valve	2
10	D-235327	Tappet	2
11	41 755 10	Kit – Retainer	2
12	X-702-3	Plug – Cup	1

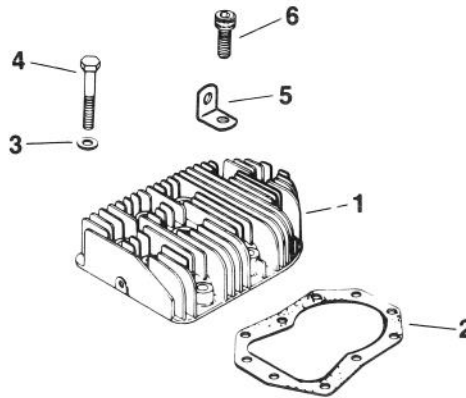
Ref. No.	Part No.	Description	No. Used
Carburetor			
1	45 053 76	Carburetor Assembly (Incl. Ref. #5-18)	1
2	25 155 02	Connector – Hose	1
3	47 049 01	Gasket – Carburetor	1
4	X-770-1	Screw – Slted. Hd.	2
5	45 103 01	Needle – Main Fuel Adj.	1
6	200383	Spring – Main Fuel	1
7	200380	Spring – Idle Fuel	1
8	275231	Needle – Idle Fuel Adj.	1
9	232555	Spring – Idle Speed	1
10	232556	Screw – Idle Speed Adj.	1
11	200375	Gasket – Bowl	1
12	25 757 03	Kit – Float (Incl. Ref. #13)	1
13	25 041 02	Gasket – Bowl Baffle	1
14	200376	Pin – Float Hinge	1
15	235448	Bowl – Fuel	1
16	47 100 06	Screw – Bowl Retainer (Incl. Ref. #17)	1
17	200372	Gasket – Bowl Screw	1
18	X-391-10	Connector – Hose	1
	25 757 02	Kit – Carburetor Repair	1
	25 757 05	Kit – Choke/Throttle Repair	1
Crankcase			
1		Block Cylinder Assembly (Incl. Ref. #13,15,16) (USE: Miniblock 4578233)	1
2	47 422 05	Gasket – Shim	A/R
3	47 041 09	Gasket – Bearing Plate	1
4	235376	Bearing – Ball	2
5	47 146 11	Plate – Bearing	1
6	47 032 06	Seal – Front Oil	1
7	X-159-2	Screw – H.C.	4
8	X-132-6	Screw – H.C.	4
9	235026	Cover – Camshaft	1
10	235025	Gasket – Camshaft Cover	1
11	235125-5	Shaft – Governor Gear	1
12	X-230-11	Plug – Expansion	1
13	234866	Bearing – Gov. Cross Shaft	1
14	47 032 07	Seal – Rear Oil	1
15	230265	Insert – Valve	2
16	235007-5	Guide – Valve	2
17	236559	Shaft – Balance Gear Stub	3

ENGINE KOHLER MODEL NO. M16QS SPEC NO. 711563

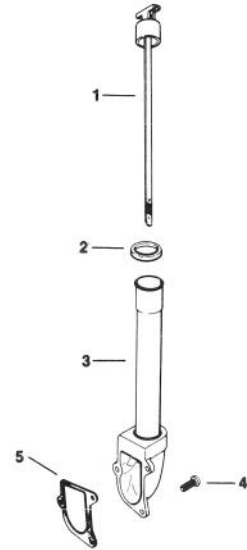
Crankshaft



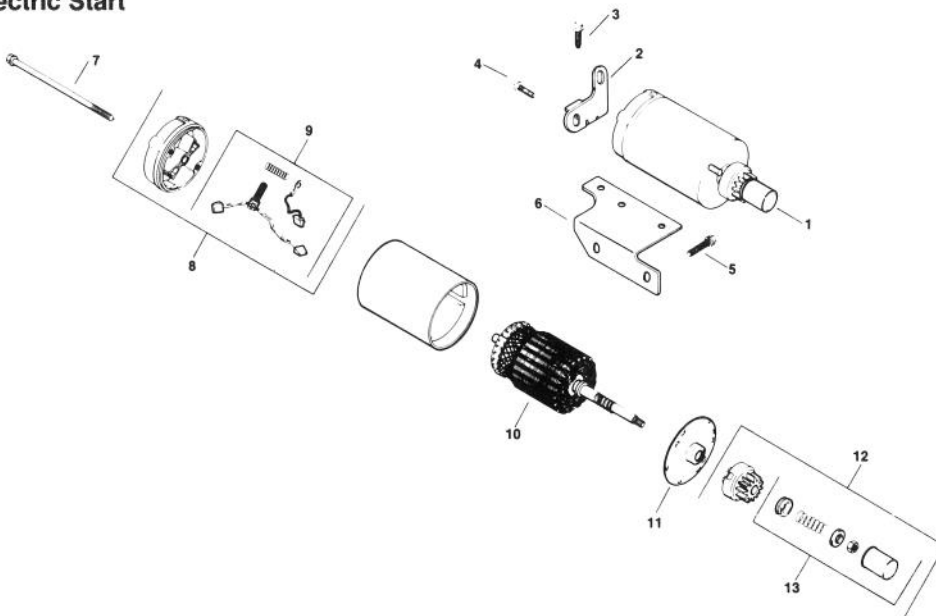
Cylinder Head



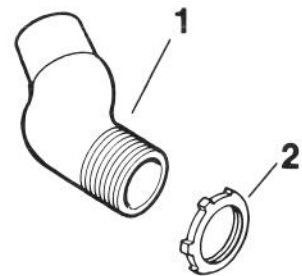
Dipstick



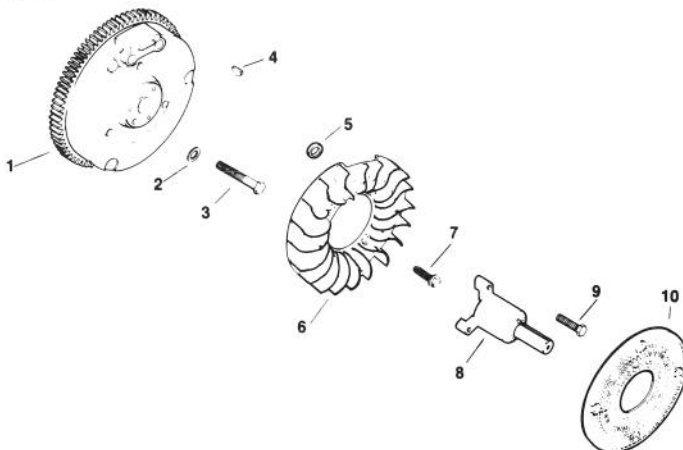
Electric Start



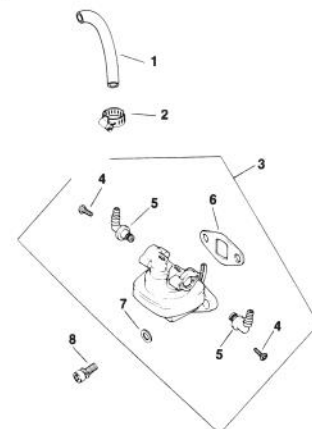
Exhaust



Flywheel



Fuel Pump



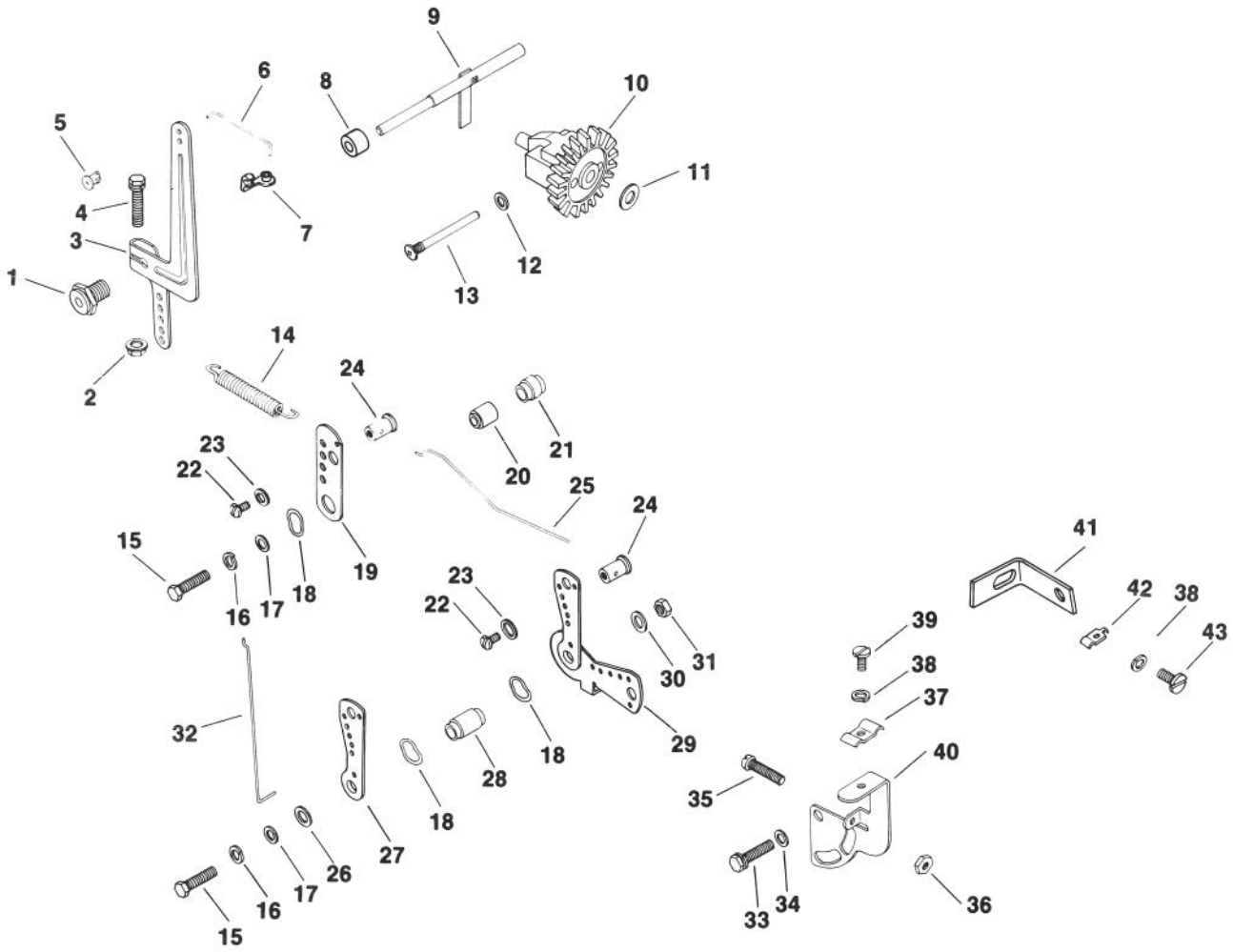
ENGINE KOHLER MODEL NO. M16QS SPEC NO. 711563

Ref. No.	Part No.	Description	No. Used
		Crankshaft	
1	45 014 86	Crankshaft	
2	45 043 03	Gear Assembly (Incl. Ref. #3)	3
3	47 030 01	Bearing – Needle	3
4	47 755 01	Kit – Spacer (Incl. Ref. #5 & 6)	1
5	X-269-34	Retainer	3
6	237769	Spacer	3
		Cylinder Head	
1	45 015 09	Head – Cylinder	1
2	45 041 17	Gasket – Head	1
3	270889	Washer – Plain	10
4	270158	Screw – H.C.	9
5	47 445 02	Strap – Lifting	1
6	47 086 17	Screw – Hex Socket Hd.	1
		Dipstick	
1	47 038 27	Dipstick	1
2	41 153 01	O-Ring	1
3	47 029 06	Adapter – Oil Fill	1
4	X-131-2	Screw – F.H.	3
5	237064	Gasket	1
		Electric Start	
1	41 098 04	Starter Assembly (Incl. Ref. #7-13)	1
2	45 126 17	Brace – Tail	1
3	X-67-83	Screw – Hex Wash. Hd.	1
4	X-67-62	Screw – Hex Wash. Hd.	1
5	X-159-2	Screw – H.C.	2
6	47 126 29	Bracket – Solenoid	1
7	41 086 19	Bolt – Thru	2
8	41 227 04	Cap – Commutator End (Incl. Ref. #9)	1
9	52 755 15	Kit – Brush	1
10	45 170 02	Armature	1
11	41 227 03	Cap – Drive End	1
12	47 755 07	Kit – Drive (Incl. Ref. #13)	1
13	47 755 13	Kit – Drive Parts	1
	25 450 03	Tag – Caution	1
	52 357 01	Lubricant – Starter	

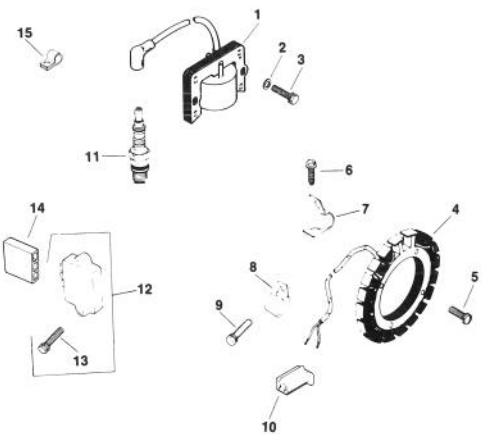
Ref. No.	Part No.	Description	No. Used
		Exhaust	
1	45 054 04	Elbow – Exhaust	1
2	45 100 01	Nut – Lock	1
		Flywheel	
1	47 025 53	Flywheel	1
2	52 468 15	Washer – Plain	1
3	25 086 24	Screw – Hex Mach.	1
4	X-46-3	Key – Woodruff	1
5	25 112 04	Spacer	4
6	25 157 01	Fan	1
7	25 086 21	Screw – Hex Wash. Hd.	4
8	235954	Shaft – Front Drive	1
9	X-159-2	Screw – H.C.	4
10	25 162 03	Screen – Grass	1
		Fuel Pump	
1	25 353 01	Line – Fuel	1
2	X-426-9	Clamp – Hose	2
3	47 559 08	Pump – Fuel Assembly (Incl. Ref. #4-7)	1
4	25 086 35	Screw – Tapping	2
5	25 294 01	Fitting & O-Ring – 90°	2
6	25 041 05	Gasket – Fuel Pump	1
7	X-25-63	Washer – Plain	2
8	X-174-2	Screw – F.H.M.	2

ENGINE KOHLER MODEL NO. M16QS SPEC NO. 711563

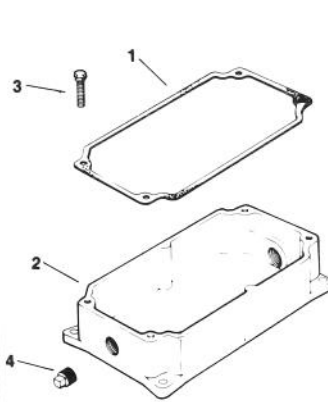
Governor



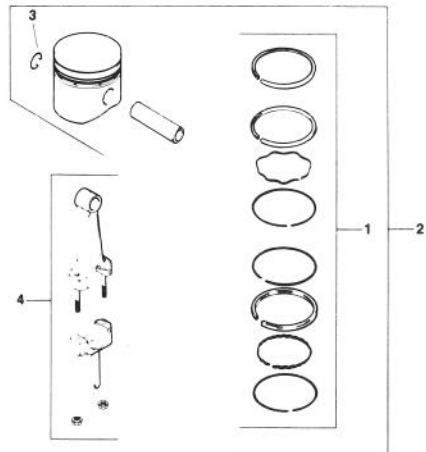
Ignition



Oil Pan



Piston & Rod



ENGINE KOHLER MODEL NO. M16QS SPEC NO. 711563

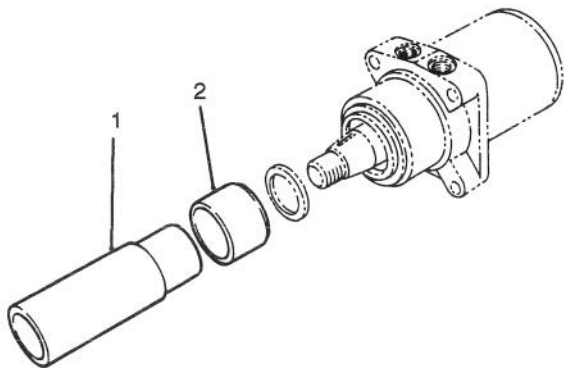
Ref. No.	Part No.	Description	No. Used
		Governor	
1	235476	Bushing – Governor	1
2	X-799-1	Palnut	1
3	47 090 20	Lever – Governor	1
4	X-776-1	Screw – H.C.	1
5	25 158 09	Bushing – Linkage Rtng.	1
6	47 079 05	Linkage – Governor	1
7	47 158 07	Bushing – Linkage Rtng.	1
8	X-400-80	Spacer	1
9	A-235256-S	Kit – Governor Cross Shaft	1
10	A-235743-S	Kit – Governor Gear	1
11	237022	Washer–Thrust	1
12	25 468 01	Washer – Plain	1
13	231355	Pin – Governor Stop	1
14	235496	Spring – Governor	1
15	X-5-26	Screw – H.C.	2
16	X-20-1	Washer – Lock	2
17	X-25-63	Washer – Plain	2
18	275690	Washer – Wave	3
19	235086	Bracket – Speed Control	1
20	235085	Spacer	1
21	X-384-2	Spacer	1
22	X-51-8	Screw – Slt. Pan Hd.	1
23	X-25-102	Washer – Plain	1
24	48 755 10	Kit – Clamp (Incl. Ref. #22 & 23)	1
25	47 079 08	Linkage – Throttle	1
26	X-25-82	Washer – Plain	1
27	47 090 05	Lever – Choke	1
28	47 112 19	Spacer	1
29	47 090 09	Lever – Throttle	1
30	X-25-95	Washer – Plain	1
31	X-81-1	Nut – Hex	1
32	47 079 01	Linkage – Choke	1
33	X-132-6	Screw– H.C.	1
34	X-25-72	Washer – Plain	1
35	232556	Screw	1
36	X-72-4	Nut – Hex	1
37	1223701	Clamp – Cable	1
38	X-19-1	Washer–Lock	2
39	X-67-38	Screw	1
40	47 126 13	Bracket – Choke	1
41	47 126 36	Bracket – Choke	1
†42	81-1690	Clamp – Cable	1
43	X-15-5	Screw – F.H.M.	1

Ref. No.	Part No.	Description	No. Used
		Ignition	
1	47 584 02	Module – Ignition	
2	X-25-79	Washer – Plain	2
3	X-156-1	Screw – H.C.	2
4	237878	Kit – Stator	1
5	X-67-51	Screw – Hex. Wash. Hd.	4
6	X-67-59	Screw – Hex. Wash. Hd.	1
7	X-728-1	Clip (Mounts to Bearing Plate)	1
8	235173	Clip (Mounts to Cylinder Block)	1
9	X-132-6	Screw	1
10	41 155 03	Connector – Male	1
11	235041-5	Spark Plug RH-10	1
12	25 755 03	Kit – Rectifier–Regulator (Incl. Ref. #13)	1
13	X-132-5	Screw – H.C.	2
14	236602	Connector – Female	1
15	210281	Clip – Hi–Tension Lead	1
	47 518 38	Lead – White, Module to Connector (23"–18 g. – insulated push on tab – uninsulated push on tab terminals)	1
	47 518 46	Lead – Violet, Rectifier Regulator to Connector (12.5" – 14–gauge – uninsulated push on tab terminals)	1
		Oil Pan	
1	235057	Gasket – Oil Pan	1
2	47 199 10	Pan–Oil	1
3	X-159-3	Screw – H.C.	4
4	X-75-6	Plug – Sq. Hd. Solid	2
		Piston & Rod	
1	45 108 10	Ring Set (Std. & .003)	1
	45 108 11	Ring Set(.010)	1
	45 108 12	Ring Set (.020)	1
	45 108 13	Ring Set (.030)	1
2	45 874 11	Piston w/Ring Set (Std.)	1
	45 874 12	Piston w/Ring Set (.003)	1
	45 874 13	Piston w/Ring Set (.010)	1
	45 874 14	Piston w/Ring Set (.020)	1
	45 874 15	Piston w/Ring Set (.030)	1
3	47 018 01	Retainer – Piston Pin	2
4	45 067 24	Connecting Rod (Std.)	1
	45 067 25	Connecting Rod (.010)	
	45 782 33	Miniblock	1
	47 004 02	Gasket Set w/o Seals	1
	45 755 12	Gasket Set w/Seals	1

†Available from your local TORO Distributor

SPECIAL TOOLS

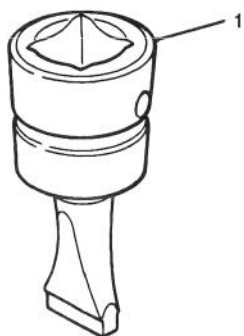
DRIVE MOTOR SEAL INSTALLATION TOOL NO. *19-2660



T-0728

Ref. No.	Part No.	Description	No. Used
1		Driver - Seal	1
2		Holder - Seal	1

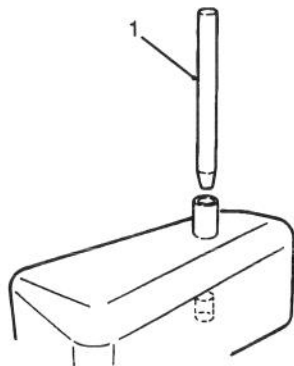
BEDKNIFE SCREW TOOL NO. *TOR510880



T-0729

Ref. No.	Part No.	Description	No. Used
1		Tool - Bedknife Screw	1

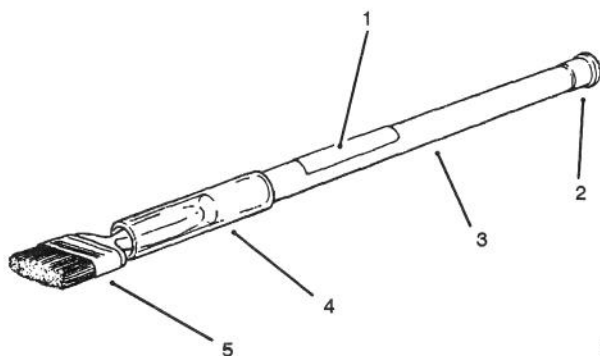
HYDRAULIC OIL RESERVOIR PLUG NO. *88-9220



T-1213

Ref. No.	Part No.	Description	No. Used
1		Plug - Reservoir	1

BACKLAPPING BRUSH ASSEMBLY NO. *TOR299100



T-0731

Ref. No.	Part No.	Description	No. Used
1	12-9140	Decal	1
2	2410-18	Plug	1
3	29-9080	Handle	1
4	29-9090	Hose - Handle	1
5	36-4310	Brush	1

*Obtain these items directly from OTC 2013 4th St. Owatonna, MN. 55060 1-800-533-0492
(in Minnesota and Canada 1-507-455-7050) Fax. 507-455-7011.

TORO PART NUMBER INDEX

3316-358

Part No.	Description	Pg. Ref. No. No. Qty.	Part No.	Description	Pg. Ref. No. No. Qty.
3-0348	Bushing - Sleeve	27 7 4	27-9870	Pin - Seat Spring	5 28 1
3-0348	Bushing - Sleeve	28 17 2	28-0120	Bracket - Hinge L.H.	1 19 1
3-6498	Washer	20 49 4	28-0130	Bracket - Hinge R.H.	2 42 1
3-6498	Washer - Thrust	3 17 A/R	28-3670	Shaft - Trunion	16 28 1
5-0743	Spring - Extension	28 1 1	28-4210	Solenoid - Starter	13 12 1
5-0743	Spring - Extension	27 17 2	28-6180	Pin	5 47 1
5-2653	Cable Pulley Assembly	23 8 1	28-8080	Boot - Battery Terminal	13 6 1
5-2655	Keeper - Cable	23 7 1	29-6120	Plate - Pump	18 29 1
5-2656	Keeper - Cable	23 30 1	29-6150	Spring - Leaf	18 26 1
5-4723	Spring - Compression	8 31 1	29-6170	Spring - Extended Leaf	18 27 1
5-7280	Key - Square (Short)	22 16 3	29-9080	Handle	30 3 1
5-7290	Spring - Extension	19 6 1	29-9090	Hose - Handle	30 4 1
10-4850	Spring - Compression	2 44 2	36-4310	Brush	30 5 1
10-6821	Brake Drum Assembly	19 18 2	37-9590	Spring	5 21 1
10-6870	Hub - Wheel	19 19 2	38-7820	Bearing - Idler	22 3 2
10-7070	Key-Square	10 5 1	38-8000	Filter - Fuel	7 5 1
10-7130	Wire - Battery/Solenoid	9 3 1	42-2040	Screw - Hex. Hd. Self Tap	18 23 3
10-8120	Bolt - Battery	13 8 2	43-1950	Valve - Hydraulic	25 16 1
11-0590	Screw - Thread Forming	23 17 4	43-8600	Spring - Compression	5 29 1
11-0590	Screw - Cap Hex. Hd.	13 19 2	43-8610	Guide - Spring & Ball Seat	5 30 1
12-3270	Screw - Cap Hex. Hd.	10 30 4	43-8620	Guide - Switch Pin	5 25 1
12-9140	Decal	30 1 1	43-8860	Plunger - Switch	5 26 1
13-1279	Idler Pulley Assembly	22 * 1	43-8870	Boot - Switch	5 20 1
16-1089	Lift Arm Assembly	28 29 1	44-2212	Lamp - Pilot	8 3 1
16-1159	Lift Arm Assembly L.H.	27 8 1	44-8310	Ring - Retaining	11 3 2
16-1169	Lift Arm Assembly R.H.	27 * 1	44-8320	Spring - Compression	11 10 3
18-2970	Clamp - R	28 21 1	44-8330	Spacer - Pulley Bearing	11 6 1
20-0151	Rod End Assembly	4 5 1	44-8350	Field Assembly	11 1 1
21-0141	Rod End Assembly	3 15 1	44-8360	Field Coil, Rotor & Bearing	11 4 1
22-8330	Plug	26 1 2	46-8400	Bearing - Needle	16 42 1
22-8340	Spring	26 3 2	46-8810	Stop - Spring	18 4 1
22-8350	Ball	26 4 2	47-2980	Hose - Fuel	7 3 1
22-8360	Pin - Cam	26 6 2	47-2988	Hose - Fuel	7 7 1
22-8370	Seat - Check Valve	26 5 2	48-1800	Cylinder Block Kit	16 5 1
22-8380	Retainer - Spring	26 10 2	49-2040	Screw - Tapping	10 13 5
22-8410	Spring	26 11 1	49-8480	Shaft - Trunion	16 12 1
22-8420	Spool	26 8 1	49-8510	Kit - Charge Relief	17 * 1
22-8480	Snap Ring - Spool	26 13 1	49-8520	Kit - Implement Relief	17 * 1
22-8490	Snap Ring	26 14 1	51-3150	Shim - Spring Arm	18 28 1
22-8500	O-Ring	26 9 2	54-0110	Filter - Oil	15 28 1
23-0660	Switch - Key	8 19 1	55-3570	Cap-Fuel	7 11 1
23-3030	Spacer	26 12 1	55-4300	Decal - Warning	27 9 2
23-8910	Fitting - 90° Hose Elbow	15 26 2	55-4300	Decal - Warning	28 24 1
25-2380	Plate - Thrust	16 39 1	56-2230	Hose - Fuel	7 9 1
25-2390	Plate - Valve	16 40 1	56-7982	Sleeve - Protective	14 * 1
25-2400	Gasket	16 43 1	56-9510	Bushing Assembly	29 10 2
25-2430	Pin - Straight	16 41 1	56-9520	Bushing - Nylon	29 16 1
25-2450	Swash/Plate	16 37 1	57-3210	Screw - Hex. Washer Hd.	1 32 2
25-2460	Plug	16 14 2	59-9810	Module - Ignition	10 16 1
25-2470	Kit - Shim Pack	16 16 2	61-0020	Shroud - Muffler	10 31 1
25-2480	Spring - Charge Relief	16 32 1	61-0030	Tank-Fuel	7 10 1
25-2490	Ball - Check Valve	16 47 2	61-0070	Pulley - Poly V	22 28 1
25-2510	Washer	16 11 2	61-0100	Tank - Hydraulic	13 25 1
25-2530	Pin - Straight	16 26 1	61-0140	Pulley - Jackshaft	22 22 3
25-2570	Spring - Relief Valve	16 17 1	61-1960	Axle - Wheel	4 7 1
25-2630	Ring	16 3 1	61-2070	Rod - Steering	3 13 1
25-2640	Spring - Check Valve	16 48 2	61-2070	Rod - Steering	4 18 1
25-2650	Plug - Check Valve	16 49 2	61-2090	Steering Column Assembly	3 8 1
25-2680	Gerotor Assembly	16 25 1	61-2120	Bracket - Air Cleaner	10 6 1
25-3180	Kit - Check Valve	17 * 1	61-2220	Spacer	7 20 4
25-3210	Seal - Lip	16 10 2	61-2230	Plate - Pump Mount	15 13 1
26-3790	Nut - Lock	19 23 2	61-2350	Mount - Bearing	22 27 2

*Not Illustrated

TORO PART NUMBER INDEX (Cont.)

Part No.	Description	Pg. No.	Ref. No.	Qty.	Part No.	Description	Pg. No.	Ref. No.	Qty.
61-2430	Hub - Lift	23	45	1	63-5080	Pressure Sequence Valve	14	12	1
61-2490	Hose - Hydraulic	23	42	1	63-5400	Exchanger - Heat	14	30	1
61-2490	Hose Assembly	12	2	1	63-8360	Key	8	9	1
61-2500	Hose - Hydraulic	23	41	1	63-8770	Fitting - 45° Orifice	14	11	1
61-2500	Hose Assembly	12	1	1	63-8790	Cartridge Valve Assembly	14	10	1
61-2510	Hose - Hydraulic	25	9	1	63-8800	Seal Kit	14	*	1
61-2510	Hydraulic Hose Assy. Lower	12	10	1	63-8940	Shield - Cooler	14	17	1
61-2520	Hose - Hydraulic	25	17	1	65-4500	Seal - Snap Ring	21	14	1
61-2520	Hydraulic Hose Assy. Upper	12	8	1	65-4550	Valve - Check Ball	21	6	2
61-2540	Hose - Hydraulic	15	8	1	65-4560	Plug - Hex (Hollow)	21	3	1
61-2540	Hose - Hydraulic	12	13	1	65-4570	Seal - Square Ring	21	4	2
61-2550	Hose - Hydraulic	12	11	1	65-4580	Screw - Cap Hex Hd.	21	1	8
61-2550	Hose - Hydraulic	15	27	1	65-4590	Ring - Snap	21	21	1
61-2610	Arm - Traction	18	14	1	65-4600	Washer - Thrust	21	19	2
61-2660	Wire - Solenoid/Starter	9	1	1	65-4610	Bearing - Thrust	21	20	1
61-2670	Wire - Ground	9	2	1	65-4620	Seal - O-Ring	21	12	1
61-2680	Weight - Standard	7	14	1	65-4640	Key - Square	19	10	2
61-2710	Fitting - 90° Hose Elbow	15	6	1	65-4670	Body & Bearing Assembly	21	9	1
61-2720	Bracket - Lever	25	10	1	65-4680	Cover & Bearing Assembly	21	2	1
61-2790	Screen - Filler	13	28	1	66-0120	Knob	8	2	2
61-2940	Lever-Pump	18	31	1	66-5291	Hydraulic Motor Assembly	19	30	2
61-3060	Tube - Hydraulic R.H.	12	3	2	66-5340	Grille - Front	2	38	1
61-3060	Tube - Hydraulic R.H.	15	33	2	66-6110	IGR Assembly	21	5	1
61-3070	Tube - Hyd. L.H. (Rear)	15	25	1	66-6120	Pad-Foot	1	27	1
61-3070	Tube - Hydraulic L.H. Rear	12	15	1	66-6840	Decal - Hot	13	26	1
61-3080	Tube - Hyd. L.H. (Front)	15	24	1	66-6840	Decal - Hot	10	47	1
61-3080	Tube - Hydraulic L.H. Front	12	16	1	67-7490	Key - Square (Long)	22	18	1
61-3210	Cable Pulley Assembly	23	22	3	67-7750	Pulley - Idler	22	4	1
61-3230	Spacer	23	24	3	67-7870	Idler Bracket W.A.	22	11	1
61-3240	Keeper - Cable	23	21	1	67-7890	Belt Tensioner W.A.	22	6	1
61-3260	Cable - Lift	23	19	1	67-7911	Strap - Idler Bracket	22	2	1
61-3270	Spring - Compression	27	6	2	67-8020	Shaft - Pump	16	6	1
61-3310	Plate - Toro Logo	7	13	1	67-8030	Plug Assembly	16	19	2
61-3320	Pulley- Pump	15	17	1	67-8040	O-Ring	16	20	2
61-3340	Bushing - Taper	10	46	1	67-8050	Bearing - Needle	16	22	1
61-3350	Bushing - Taper	15	19	1	67-8060	Seal - Lip	16	23	1
61-3390	Belt - Poly-V	10	25	1	68-4210	Spacer - Wheel	4	8	2
61-3470	Hose	10	11	1	70-7080	Spacer - Clutch	10	18	1
61-3550	Valve - Ball	7	8	1	70-8020	Clutch Assembly	10	21	1
61-3770	Head - Filter	15	29	1	70-8030	Key	10	36	1
61-3830	Chain - Lift	23	33	2	70-8040	Washer - Flat	10	22	1
61-3840	Decal - Reelmaster 216	5	16	2	70-8150	Plate - Valve	21	7	1
61-3880	Panel - Access R.H.	5	52	1	70-9840	Shoe - Brake	19	16	4
61-3990	Parking Brake Assembly	19	5	1	70-9850	Clip - Retaining	19	35	2
61-7250	Boot	27	5	4	70-9860	Pin - Pivot Brake	19	25	2
62-4290	O-Ring	16	44	2	70-9870	Plate - Brake	19	27	2
62-5140	Weight - 8 Blade	7	*	1	70-9880	Spring - Extension	19	17	4
62-5250	Armature & Pulley Assembly	11	5	1	71-1370	Spring - Compression	23	35	1
62-5330	Bracket - Side Panel	5	7	1	71-1380	Pin - Spring	23	34	1
62-5400	Hood Assembly	1	5	1	71-1500	Brake Assembly	20	*	2
62-7170	Spacer	5	39	1	72-4150	Shield - Heat	1	24	1
62-7190	Spacer	1	30	1	72-4190	Pin - Cylinder Guide	23	12	1
62-7240	Cover - Spring	28	2	1	72-4320	Switch - Neutral	5	31	1
62-7250	Boot	28	18	2	72-4350	Panel - Access L.H.	5	19	1
62-7300	Chain	28	3	1	72-4360	Footrest - L.H.	1	29	1
62-7320	Stop - Traction Pedal	1	9	1	72-4790	Clamp - Battery	13	2	1
62-7350	Slide - Pedal Stop	1	11	2	72-9540	Bracket - Heat Shield	1	23	1
62-7400	Decal - Toro Logo	1	4	1	74-0720	Tube - Manual	5	45	1
63-4880	Hose - Hydraulic	12	9	1	74-9100	Pad - Pedal Forward	18	7	1
63-4880	Hydraulic Hose Assembly	14	18	1	74-9110	Pad - Pedal Reverse	18	11	1
63-4890	Hose - Hydraulic	12	7	1	75-6820	Meter - Hour	8	1	1
63-4890	Hydraulic Hose Assembly	14	15	1	75-7730	Spacer	4	2	1

*Not Illustrated

TORO PART NUMBER INDEX (Cont.)

3316-358

Part No.	Description	Pg. Ref. No. No. Qty.	Part No.	Description	Pg. Ref. No. No. Qty.
75-9260	Support - Hydraulic Tank	5 2 1	83-9310	Pivot - Brake R.H.	19 * 1
75-9310	Latch - Hood	1 6 1	83-9330	Shaft - Brake	19 41 1
75-9320	Bushing - Hood Latch	8 33 1	83-9340	Shield - Grass	19 13 2
75-9330	Pin - Hood Latch	8 30 1	83-9350	Rod - Parking Brake	19 1 1
76-0020	Hydraulic Cylinder Assembly	23 37 1	83-9550	Decal - Warning	5 44 1
76-0030	Repair Kit	24 * 1	83-9690	Spring - Compression	22 9 1
76-0040	Piston	24 8 1	83-9730	Step - Foot	5 18 1
76-0050	Ring - Retaining	24 12 1	83-9800	Shield - Front Grass L.H.	1 33 1
76-0070	Bracket - Interlock Module	10 15 1	83-9810	Bushing - Flange	22 10 1
76-0080	Collar - Bearing	11 7 1	84-1650	Decal - Brake	1 28 1
76-0090	Head	24 3 1	84-1830	Cap - Battery Vent	13 34 6
76-0130	Hood Stop Chain Assembly	1 22 1	84-1840	Grille - Muffler	10 37 1
76-0190	Cap-Oil	13 17 1	84-1850	Muffler	10 26 1
76-0200	Oil Cap Assembly	13 * 1	84-1990	Rod - Adjusting	19 32 2
76-0220	Foam - Oil Filter	13 9 1	84-2000	Bracket - Brake	19 29 2
76-0240	Dipstick Assembly	13 29 1	84-8440	Bushing - Flange	23 11 2
76-0300	Housing - Bushing	29 12 1	85-5160	Lever - Lift Valve	25 2 1
76-0350	Housing - Bushing	29 2 1	85-5230	Bracket - Seat Pivot	6 53 2
76-0360	Cup - Retainer	29 6 1	85-5330	Plate - Seat	5 14 1
76-0370	Bolt - Shoulder	28 12 2	85-5340	Tube - Pivot	5 48 2
76-0370	Bolt - Shoulder	27 23 2	85-6540	Stud - Drive	19 26 8
76-0390	Spacer	29 15 1	88-8220	Valve - By-Pass	16 4 1
76-0410	Spring - Compression	29 7 1	88-9550	Decal - Service Information	5 34 1
76-0420	Rod - Pump Control	18 9 1	92-1157	Shaft	21 10 1
76-0440	Battery Support W.A.	13 10 1	92-1810	Arm - Torque	10 19 1
76-0500	Cover - Reservoir Support	5 41 1	92-1812	Shaft - Lift Pivot	27 25 2
76-1420	Wheel - Steering	3 10 1	92-1812	Shaft - Lift Pivot	28 31 1
76-2170	Pedal - Traction	18 8 1	92-1813	Spacer - Torque Arm	10 20 1
76-2200	Footrest - Traction	1 12 1	92-1814	Spacer - Torque Arm	10 51 1
76-2220	Adjustment Yoke Assembly	15 31 1	92-1815	Rod - Pivot	27 13 2
76-2260	Pad - Footrest	1 13 1	92-1815	Rod - Pivot	28 26 1
76-2320	Shaft	24 4 1	92-1818	Arm - Tension	28 7 1
76-2330	Nut - Lock	24 5 1	92-1818	Arm - Tension	27 29 2
76-2350	Seal/Retainer Assembly	21 * 1	92-1819	Pulley - Engine	10 45 1
76-2360	Body Seal Kit	21 * 1	92-1820	Frame Assembly	3 19 1
76-2430	Scraper - Pulley	27 2 2	92-1821	V-Belt - Pump	15 16 1
76-2460	Bearing Assembly	22 25 2	92-1822	Shackle	27 26 2
76-2520	Hydraulic Hose	15 1 2	92-1822	Shackle	28 34 1
76-2520	Hydraulic Hose Assembly	12 4 2	92-1840	Bracket - Cylinder & Cooler	23 1 1
76-2530	Hose - Hydraulic	12 6 1	92-1841	Nut - Hood Pivot	2 41 2
76-2530	Hydraulic Hose Assembly	14 1 1	92-2406	Hose - Hydraulic	12 12 1
76-2540	Hose - Hydraulic	12 18 1	92-2406	Hydraulic Hose Assembly	14 32 1
76-2540	Hose Assembly - Hyd.	15 43 1	92-2407	Hose - Hydraulic	12 14 1
76-2550	Hose - Hydraulic	12 17 1	92-2407	Hydraulic Hose Assembly	14 28 1
76-2550	Hose Assembly	15 49 1	92-2408	Hose - Hydraulic	12 19 1
77-0480	Screw - Traction Stop	2 45 1	92-2408	Hose - Hydraulic	13 23 1
80-3940	Clip - Rosebud	5 50 1	92-2408	Hose - Hydraulic	15 39 1
80-4110	Control - Throttle	8 23 1	92-3162	Bushing - Flange	3 4 4
80-4120	Control - Choke	8 22 1	92-3165	Steering Shaft & Gear	3 5 1
80-4240	Footrest R.H.	1 14 1	92-3172	Rack - Steering	3 16 1
82-4640	Battery - 12 Volt	13 7 1	92-3177	Decal - Instrument Panel	8 12 1
83-7260	Cone - Relief Valve	16 18 2	92-3180	Panel	5 42 1
83-7340	Fork - Caster	4 6 1	92-3189	Panel - Instrument	5 10 1
83-7820	Shaft - Drive	22 20 1	92-3191	Diode - Circuit Board	9 4 1
83-7900	Belt Tensioner Assembly	28 11 2	92-3194	Switch - Clutch	8 20 1
83-7900	Belt Tensioner Assembly	27 24 2	92-3195	Knob	8 26 1
83-7910	Rod	29 8 1	92-7901	Wire Harness Assembly	9 5 1
83-7930	Yoke	29 3 1	92-7905	Lift Switch Assembly	23 4 1
83-8860	Shield - Front R.H.	2 35 1	92-7905	Neutral Switch Assembly	18 5 1
83-9130	Keeper - Cable	23 48 1	92-7906	Switch - Lift	23 49 1
83-9250	Lever - Brake	19 36 2	92-7906	Switch - Neutral	18 34 1
83-9270	Pivot - Brake L.H.	19 40 1	92-7940	Housing - Charge Pump	16 21 1

*Not Illustrated

TORO PART NUMBER INDEX (Cont.)

Part No.	Description	Pg. No.	Ref. No.	Qty.	Part No.	Description	Pg. No.	Ref. No.	Qty.
92-8776	Plug Assembly	17	52	2	2412-133	Clamp - R	5	46	2
92-8777	Seal - O-Ring	16	51	2	251-8	Bearing - Ball	16	35	1
92-9023	Hydraulic Pump Assembly	16	8	1	251-77	Collar - Locking	22	23	2
92-9023	Pump Assembly	15	5	1	251-259	Bearing - Ball	18	32	1
217-60	Rim	19	21	2	251-291	Bearing - Pulley	11	8	2
218-461	Nut	8	10	1	251-292	Bearing - Field	11	2	1
218-461	Nut - Jam	5	22	2	251-321	Bearing - Wheel	4	9	2
218-489	Fuse Holder Assembly	8	14	1	251-337	Bearing	22	29	2
218-535	Nut	8	18	1	252-82	Bearing - Needle	16	9	2
218-536	Washer - Lock	8	17	1	256-1	Bushing - Sleeve	23	23	3
218-562	Lens	8	5	1	256-2	Bushing - Sleeve	23	44	1
219-18	Bulb- Light (GE #1893)	8	4	1	256-27	Bushing - Sleeve	3	6	2
2112-9	Clamp - Muffler	10	27	1	256-115	Washer - Thrust	27	12	2
231-122	Tire	4	13	1	256-115	Washer - Thrust	28	25	1
231-127	Tire	19	20	2	256-173	Bushing - Sleeve	29	11	1
232-27	Valve - Stem	19	24	2	256-245	Bushing - Flange	3	18	2
232-47	Tube - Inner	4	*	1	256-247	Bushing - Flange	3	1	2
232-47	Valve - Stem	4	12	1	256-287	Bushing - Flange	3	2	2
233-17	Knob	8	34	1	256-321	Bushing - Flange	3	20	4
233-37	Knob	25	1	1	2710-16	Link - Connecting	25	5	1
237-7	Seal - O-Ring	5	24	1	282-2	Clevis	19	34	2
237-21	Seal - O-Ring	25	13	2	282-4	Clevis	28	5	1
237-21	Seal - O-Ring	20	47	3	282-4	Clevis	23	31	4
237-22	O-Ring	16	2	1	283-1	Pin - Clevis	28	20	1
237-22	Seal - O-Ring	14	6	5	283-1	Pin - Clevis	19	37	2
237-22	Seal - O-Ring	25	8	2	283-2	Pin - Yoke	15	52	1
237-22	Seal - O-Ring	23	40	2	283-6	Pin - Clevis	28	6	1
237-30	O-Ring	15	2	12	283-6	Pin - Clevis	23	14	4
237-30	O-Ring	15	45	3	283-40	Pin - Clevis	27	3	2
237-30	Seal - O-Ring	14	2	8	283-40	Pin - Clevis	28	14	2
237-30	Seal - O-Ring	19	7	4	283-42	Pin - Clevis	23	9	1
237-30	Seal - O-Ring	5	32	1	283-55	Pin - Clevis	29	5	1
237-37	Bumper - Rubber	5	17	2	283-75	Pin - Clevis	27	20	4
237-42	O-Ring	26	2	2	283-75	Pin - Clevis	28	32	2
237-42	Seal - O-Ring	23	38	2	283-78	Pin - Clevis	23	36	1
237-71	O-Ring	13	33	1	283-79	Pin - Clevis	23	29	1
237-78	O-Ring	15	50	1	285-17	Plug - Pipe	16	1	6
237-78	Seal - O-Ring	25	11	2	302-5	Fitting - Grease	3	3	4
237-78	Seal - O-Ring	20	46	2	302-5	Fitting - Grease	4	3	2
237-79	O-Ring	15	4	2	302-5	Fitting - Grease	29	14	1
237-79	Seal - O-Ring	25	6	1	302-5	Fitting - Grease	22	26	2
237-80	O-Ring	15	9	1	302-60	Fitting - Grease	27	16	2
237-80	Seal - O-Ring	19	9	4	302-60	Fitting - Grease	28	30	1
237-86	O-Ring	16	15	4	321-2	Screw	1	26	2
237-88	Grommet	5	51	1	321-5	Screw - Cap Hex. Hd.	19	15	8
237-95	O-Ring	16	27	1	321-5	Screw - Cap Hex. Hd.	1	20	1
237-117	O-Ring	15	41	2	321-6	Screw - Cap Hex. Hd.	18	30	2
237-125	Grommet	7	2	2	321-11	Screw - Cap Hex. Hd.	5	11	2
237-150	Seal - O-Ring	14	5	2	321-11	Screw - Cap Hex. Hd.	14	13	2
241-129	Rim	4	11	1	321-13	Screw - Cap Hex. Hd.	15	21	3
241-130	Spacer - Bearing	4	10	1	321-13	Screw - Cap Hex. Hd.	10	1	3
242-50	Nut - Lug	19	22	8	321-23	Screw - Cap Hex. Hd.	25	19	3
2410-18	Plug	30	2	1	321-39	Screw - Cap Hex. Hd.	8	6	4
2411-52	Bear - Rod End R.H.	18	12	1	322-3	Capscrew - Hex. Hd.	7	17	4
2411-53	Bearing - Rod End L.H.	18	1	1	322-3	Screw - Cap Hex. Hd.	13	1	2
2412-34	Clamp - Hose	15	10	5	322-3	Screw - Cap Hex. Hd.	1	25	31
2412-34	Clamp - Hose	13	24	1	322-3	Screw - Cap Hex. Hd.	10	52	1
2412-36	Clamp - Hose	7	4	6	322-3	Screw - Hex. Hd. Cap	5	1	9
2412-41	Clamp - R	10	38	1	322-4	Screw - Cap Hex. Hd.	27	10	2
2412-71	Clamp - R	5	37	1	322-4	Screw - Cap Hex. Hd.	28	23	1
2412-81	Clamp - R	14	25	2	322-4	Screw - Cap Hex. Hd.	16	24	4
2412-92	Clamp - Hose	10	10	2	322-4	Screw - Hex. Washer Hd.	19	4	2

*Not Illustrated

TORO PART NUMBER INDEX (Cont.)

3316-358

Part No.	Description	Pg. Ref.		Part No.	Description	Pg. Ref.	
		No.	Qty.			No.	Qty.
322-7	Capscrew - Hex. Nd.	18	10 2	3245-35	Screw - Set	22	24 4
322-12	Screw - Cap Hex. Hd.	3	11 1	3249-3	Screw - Rd. Hd. Machine	18	6 2
322-17	Capscrew - Hex. Hd.	18	24 1	3249-5	Screw - Round Hd.	23	6 2
322-17	Screw - Cap Hex. Hd.	19	2 1	3250-50	Screw - Pan Hd.	2	36 2
322-17	Screw - Cap Hex. Hd.	22	13 6	3253-3	Washer - Lock	10	2 3
322-26	Screw - Cap Hex. Hd.	28	36 1	3253-3	Washer - Lock	15	12 3
322-43	Screw - Cap Hex. Hd.	13	20 4	3253-3	Washer - Lock	19	14 8
322-43	Screw - Cap Hex. Hd.	5	23 1	3253-3	Washer - Lock	1	21 3
322-45	Screw - Hex. Hd. Cap	5	13 1	3253-4	Washer - Lock	19	3 2
322-46	Screw - Cap Hex. Hd.	10	33 2	3253-4	Washer - Lock	27	11 2
323-6	Screw - Cap Hex. Hd.	23	2 2	3253-4	Washer - Lock	13	15 2
323-7	Screw - Cap Hex. Hd.	28	8 1	3253-4	Washer - Lock	7	16 4
323-7	Screw - Cap Hex. Hd.	27	28 2	3253-4	Washer - Lock	28	22 2
323-8	Screw - Cap Hex. Hd.	10	42 4	3253-4	Washer - Lock	10	28 2
323-9	Capscrew - Hex. Hd.	7	19 4	3253-6	Washer - Lock	10	49 1
323-11	Screw - Cap Hex. Hd.	16	46 4	3253-21	Washer - Lock	13	18 2
323-13	Screw - Cap Hex. Hd.	23	46 1	3253-21	Washer - Lock	7	18 4
323-15	Screw - Cap Hex. Hd.	22	5 2	3253-27	Washer - Lock	10	23 1
323-23	Screw - Cap Hex. Hd.	23	20 2	3254-1	Washer - Lock	13	13 2
324-7	Screw - Cap Hex. Hd.	10	48 1	3254-5	Washer - Lock	8	11 1
325-4	Screw - Cap Hex. Hd.	22	19 4	3254-9	Washer - Lock	18	20 2
325-6	Screw - Cap Hex. Hd.	4	1 1	3254-9	Washer - Lock Internal	23	5 2
325-7	Screw - Cap Hex Hd.	15	14 2	3255-2	Washer - Lock	4	20 1
325-11	Screw - Cap Hex. Hd.	19	28 8	3255-7	Washer - Lock	10	4 1
325-18	Screw - Cap Hex Hd.	15	23 1	3255-7	Washer - Lock	18	22 3
3210-7	Capscrew - Hex. Hd.	18	18 1	3255-8	Screw - Hex. Flange Hd.	5	33 4
3213-9	Capscrew - Hex. Hd.	10	24 1	3255-8	Washer - Lock E.T.L.W.	6	58 1
3217-6	Nut - Hex.	13	3 2	3256-1	Washer - Flat	13	5 2
3217-6	Nut - Hex.	10	29 2	3256-1	Washer - Flat	8	7 4
3217-7	Nut - Hex.	2	39 2	3256-4	Washer - Flat	23	25 4
3217-29	Nut-Lock	18	21 2	3256-6	Washer - Flat	27	15 2
3218-1	Nut - Hex.	10	44 1	3256-6	Washer - Flat	28	27 1
3218-5	Nut - Hex. Jam	8	32 1	3256-16	Washer - Flat	19	12 8
3218-6	Nut - Jam	29	9 1	3256-21	Washer - Flat	1	7 2
3218-13	Nut-Lock	13	16 2	3256-22	Washer - Flat	1	1 8
3218-19	Nut - Hex.	8	8 2	3256-22	Washer - Flat	14	9 2
3219-14	Nut - Hex.	13	14 2	3256-22	Washer - Flat	25	18 9
3220-2	Nut - Jam	19	33 2	3256-23	Washer - Flat	5	4 9
3220-2	Nut - Jam R.H.	18	16 1	3256-23	Washer - Flat	22	14 6
3220-3	Nut - Jam	3	12 2	3256-23	Washer - Flat	7	15 4
3220-3	Nut - Jam	4	15 2	3256-23	Washer - Flat	1	16 1
3220-5	Nut - Jam	3	14 1	3256-23	Washer - Flat	23	16 1
3220-12	Nut - Jam	4	19 1	3256-24	Washer	25	4 1
3220-20	Nut - Jam L.H.	18	2 1	3256-24	Washer	16	50 1
3229-1	Bolt - Carriage	27	1 2	3256-24	Washer - Flat	22	8 1
3229-1	Bolt - Carriage	1	10 2	3256-24	Washer - Flat	13	11 2
3229-22	Bolt - Carriage	2	43 1	3256-24	Washer - Flat	23	18 4
3229-22	Bolt - Carriage	6	54 2	3256-25	Washer - Flat	10	50 1
3230-15	Bolt - Carriage	5	9 2	3256-26	Washer - Flat	3	21 2
3234-4	Screw - Cap Hex. Hd.	10	3 3	3256-26	Washer - Flat	8	35 1
3234-4	Screw - Cap Hex. Hd.	10	14 1	3256-28	Washer - Flat	4	16 1
3234-4	Screw - Hex Washer Hd.	15	11 2	3256-45	Washer - Flat	28	10 4
3234-4	Screw - Hex. Washer Hd.	23	10 1	3256-45	Washer - Flat	27	19 4
3234-13	Screw - Hex. Flange Hd.	5	3 6	3256-53	Washer - Flat	23	3 2
3234-14	Screw - Hex. Hd. Cap	5	5 2	3256-53	Washer - Flat	18	33 2
3234-17	Screw - Cap Hex. Hd.	1	15 6	3256-54	Washer - Flat	29	4 1
3234-17	Screw - Hex. Flange Hd.	5	27 2	3256-57	Washer - Flat	28	38 1
3234-17	Screw - Cap Hex. Hd.	1	2 10	3256-70	Washer - Flat	5	12 7
3234-32	Screw - Cap Hex. Hd.	28	28 1	3256-70	Washer - Flat	13	21 4
3234-32	Screw - Hex. Flange Hd.	27	14 2	3256-70	Washer - Flat	10	32 2
3242-4	Screw - Set	22	21 8	3256-74	Washer - Flat	18	13 8
3245-9	Screw - Set	15	18 1	3257-32	Key - Woodruff	16	7 1

*Not Illustrated

TORO PART NUMBER INDEX (Cont.)

Part No.	Description	Pg. No.	Ref. No.	Qty.	Part No.	Description	Pg. No.	Ref. No.	Qty.
3257-32	Key - Woodruff	15	20	1	32104-77	Screw - Hex. Hd. Self-Tap	1	8	2
3272-4	Pin - Cotter	23	13	1	32104-82	Screw - Hex. Hd. Self-Tap	2	34	4
3272-4	Pin - Cotter	23	27	1	32108-101	Screw - Flathead	13	32	1
3272-4	Pin - Cotter	5	36	2	32120-11	Ring - Retaining	16	36	1
3272-6	Pin - Cotter	28	19	1	32120-15	Ring - Retaining	16	34	1
3272-6	Pin - Cotter	19	31	4	32121-6	Pin - Roll	18	17	1
3272-6	Pin - Cotter	23	43	1	32121-6	Pin - Roll	5	43	1
3272-6	Pin - Cotter	15	53	1	32121-9	Pin - Roll	29	13	1
3272-7	Pin - Cotter	19	43	1	32121-10	Pin - Roll	3	9	1
3272-10	Pin - Cotter	27	22	4	32121-23	Pin - Roll	29	1	1
3272-10	Pin - Cotter	28	33	2	32121-24	Pin - Roll	18	3	1
3272-11	Pin - Cotter	28	4	1	32121-34	Pin - Roll	15	35	1
3272-11	Pin - Cotter	23	32	5	32121-79	Pin - Roll	19	39	2
3272-13	Pin - Cotter	28	13	2	32121-91	Pin - Coiled Spring	16	38	3
3272-13	Pin - Cotter	27	27	2	32121-124	Pin - Roll	23	28	1
3272-15	Key - Woodruff	21	11	1	32122-14	Screw - Truss Hd.	5	49	2
3290-196	Nut - Retainer	5	38	3	32128-20	Nut - Flange	2	46	2
3290-199	Nut - Speed	13	31	1	32128-20	Nut - Lock	20	48	2
3290-199	Nut - Speed	5	40	3	32128-25	Nut - Flange Lock	22	15	6
3290-224	Washer - Lock Pyramidal	2	40	2	32128-25	Nut - Flange Lock	5	15	17
3290-378	Tie - Cable	10	17	1	32128-25	Nut - Flange Lock	1	17	6
3290-379	Cable Tie	15	47	4	32128-25	Nut - Lock	10	35	2
3290-379	Tie - Cable	7	1	2	32128-25	Nut - Lock	13	22	2
3290-379	Tie - Cable	14	19	2	32128-32	Nut - Hex. Flange	14	8	2
3290-410	Tie - Push Mount	10	39	1	32128-33	Nut - Flange Lock	27	4	2
3290-470	Screw - Machine	7	12	2	32128-33	Nut - Flange Lock	6	55	2
3296-4	Nut - Lock	23	15	1	32128-43	Nut - Flange Lock	5	35	4
3296-6	Nut - Lock	11	9	3	32128-44	Nut - Flange	5	8	2
3296-6	Nut - Lock	15	22	1	32144-18	Screw - Cap Hex. Hd.	8	24	2
3296-16	Nut - Lock	1	3	5	32144-22	Screw - Hex. Hd. Self-Tap	1	18	4
3296-16	Nut - Lock	25	15	3	32144-69	Screw - Self Tapping	14	27	2
3296-16	Nut - Lock	18	25	2	32148-8	Insert - Threaded	6	57	1
3296-23	Nut - Lock	22	12	4	32149-2	Nut - Hex.	13	30	2
3296-23	Nut - Lock	15	38	3	32151-46	Ring - Retaining	16	13	2
3296-23	Nut - Lock	19	42	8	32153-3	Nut - Lock	18	15	2
3296-28	Nut - Lock	3	22	2	3333-975	Tie - Cable	10	12	1
3296-29	Nut - Flange Lock	3	7	1	340-1	Fitting - Straight	14	14	1
3296-29	Nut - Lock	5	6	2	340-77	Fitting - Hydraulic 90°	23	47	1
3296-29	Nut - Lock	18	19	1	340-87	Fitting - Hydraulic 45°	23	39	1
3296-39	Nut - Flange Lock	23	26	5	340-88	Fitting - Hydraulic Straight	25	12	1
3296-39	Nut - Lock	22	1	2	340-89	Fitting - Hydraulic 45°	19	8	2
3296-39	Nut - Lock	25	3	1	340-92	Fitting	15	51	1
3296-39	Nut - Lock	28	15	1	340-96	Fitting - 45° Elbow	14	7	2
3296-39	Nut - Lock	27	31	2	340-97	Fitting - Hydraulic 90°	25	14	1
3296-39	Nut - Lock	10	40	4	340-98	Fitting - 90° Elbow	15	3	1
3296-42	Nut - Lock	19	11	8	340-99	Fitting - Hydraulic 90°	25	7	2
3296-42	Nut - Lock	8	21	4	340-99	Fitting - Hydraulic 90°	14	16	1
3296-42	Nut - Lock	6	56	2	340-102	Fitting - Hydraulic Tee	15	42	1
3296-51	Nut - Lock	4	17	1	340-102	Fitting - Tee	15	32	2
3296-56	Nut - Lock	10	7	2	340-103	Fitting - Hydraulic 45°	20	45	1
3296-59	Nut - Lock	22	7	1	340-104	Fitting - Male/Female Tee	14	21	1
3296-59	Nut - Lock	28	9	2	340-107	Fitting - Straight	14	4	1
3296-59	Nut - Lock	27	18	2	340-109	Fitting - Male Tee	14	3	1
3298-8	Screw - Set	8	25	1	340-140	Fitting - Hydraulic Tee	20	*	1
32103-12	Nut - Wing	13	4	2	340-140	Fitting - Tee	15	46	1
32104-6	Screw - Cap Hex. Hd.	27	32	2	340-168	Fitting - 90° Male Elbow	14	31	2
32104-6	Screw - Cap Hex. Hd.	28	35	1	353-954	Fitting - 90° Elbow	15	34	1

*Not Illustrated

PRODUCT CHANGES

In an effort to make improvements available to TORO owners as quickly as possible, minor changes are incorporated into Toro's products from time to time that do not become immediately shown in the Parts Catalog. If such a change has been made in your unit, which is not reflected in your manual, see your TORO Distributor or his Authorized TORO Service Dealer for information and part numbers.

IDENTIFICATION AND ORDERING

MODEL AND SERIAL NUMBERS

The Reelmaster 216 has two identification numbers; a model number and a serial number. The two numbers are stamped on a plate which is located on the main frame under the seat. In any correspondence concerning the Reelmaster 216, supply model and serial numbers to assure that correct information and replacement parts are obtained.

To order replacement parts from an Authorized TORO Service Dealer, supply the following information:

1. Model and serial number of the Reelmaster 216.
2. Part number, description, and the quantity of part(s) desired.

NOTE: Do not order by reference number if a parts catalog is being used; use the PART NUMBER.

TABLE OF CONTENTS

Description	Page	Description	Page
Hood Assembly	1-2	Front Wheel Assembly	19-20
Frame Assembly	3	Hydraulic Drive Motor No. 66-5291	21
Rear Wheel Assembly	4	Jackshaft Assembly	22
Seat Support Assembly	5-6	Cutting Unit Lift Assembly	23
Fuel Tank Assembly	7	Hydraulic Cylinder No. 76-0020	24
Instrument Panel Assembly	8	Cutting Unit Lift Valve Installation Assembly	25
Electrical Schematic	9	Control Valve No. 43-1950	26
Engine & Clutch Assembly	10	Front Cutting Unit Lift Arm Assembly	27
Electric Clutch Assembly No. 70-8020	11	Rear Cutting Unit Lift Arm Assembly	28
Hydraulic Schematic	12	Belt Tensioner Assembly No. 83-7900	29
Hydraulic Tank & Battery Assembly	13	Engine Kohler	
Hydraulic Oil Cooler Assembly	14	Model No. M1605 Spec. No. 711563	30-35
Hydraulic Drive Assembly	15	Special Tools	36
Hydraulic Pump Assembly No. 92-9023	16-17	TORO Part Number Index	37-42
Traction Controls Assembly	18		

