



# OnePass Hitch

## ProCore® Processor

Model No. 09753—Serial No. 310000001 and Up

### Installation Instructions

# Installation

## Loose Parts

Use the chart below to verify that all parts have been shipped.

Procedure	Description	Qty.	Use
<b>1</b>	Link pin	2	Mount the support frame
	Hex nut	2	
	Washer	2	
	Support arm, R.H.	1	
	Support arm, L.H.	1	
	Washer	2	
	Jam nut	4	
	Lynch pin	2	
	Hitch cross	1	
	Screw (1/2 x 2 inches)	8	
	Washers	16	
	Locknuts (1/2 inch)	8	
	Link pin	1	
	Lynch pin	1	
	Link pin	1	
	Lynch pin	1	
	Pin assembly	1	
	Screw (1/2 x 1-3/4 inches)	4	
	Washers	8	
	Locknuts (1/2 inch)	4	
	Pipe spacer	4	
Pivot hitch	1		
Washer	2		
Locknut (1 inch)	1		
<b>2</b>	Tow arm, R.H.	1	Mount the tow-arms
	Tow arm, L.H.	1	
	Flag pin	2	
	Screw (3/8 x 1-1/4 inch)	2	
	Flange nut	2	
	Mount tab	1	
	Screw (1/2 x 2-1/4 inch)	4	
	Washer	8	
	Locknut	4	
<b>3</b>	Hitch pin	2	Mount the core processor to the aerator
	Lynch pin	2	

# 1

## Mounting the Support Frame

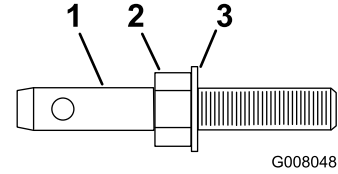
### Parts needed for this procedure:

2	Link pin
2	Hex nut
2	Washer
1	Support arm, R.H.
1	Support arm, L.H.
2	Washer
4	Jam nut
2	Lynch pin
1	Hitch cross
8	Screw (1/2 x 2 inches)
16	Washers
8	Locknuts (1/2 inch)
1	Link pin
1	Lynch pin
1	Link pin
1	Lynch pin
1	Pin assembly
4	Screw (1/2 x 1-3/4 inches)
8	Washers
4	Locknuts (1/2 inch)
4	Pipe spacer
1	Pivot hitch
2	Washer
1	Locknut (1 inch)

## Procedure

**Note:** If the aerator is mounted to the tractor, the aerator must be lowered and the disconnected from the tractor.

1. Install the link pins to the support arms as follows:
  - A. Thread a hex nut onto each link pin (Figure 1). Insert a washer onto each link pin.

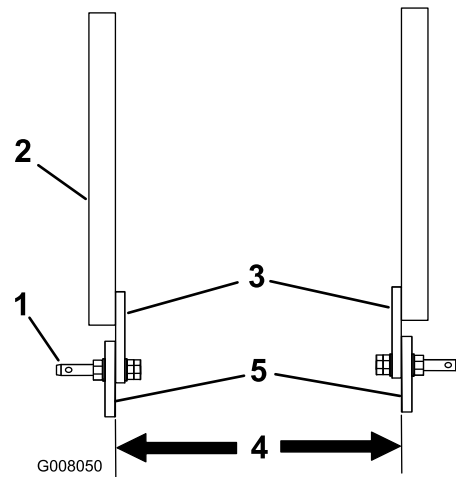


**Figure 1**

1. Link pin
2. Hex nut
3. Washer

- B. Determine the mounting position of the link arms as follows:

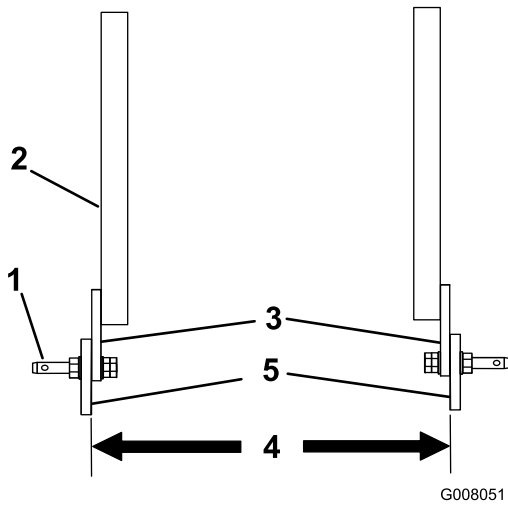
- If the distance between the lower mounting tabs on the aerator is between 20.75 and 22.62 inches (ProCore 660 & 880 aerators), position the link pins in the support arms with the mounting tabs inside, as shown in Figure 2.



**Figure 2**

1. Link assembly
2. Support arm
3. Mounting tabs inside
4. 20-3/4 to 22-5/8 inches
5. Aerator mounting tabs

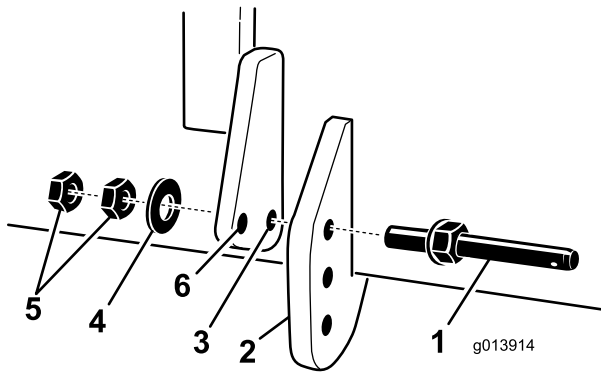
- If the distance between the lower mounting tabs on the aerator is between 26.27 and 28.11 inches (ProCore 864), position the link pins in the support arms with the mounting tabs outside, as shown in Figure 3.



**Figure 3**

- |                          |                          |
|--------------------------|--------------------------|
| 1. Link assembly         | 4. 26.27 to 28.11 inches |
| 2. Support arm           | 5. Aerator mounting tabs |
| 3. Mounting tabs outside |                          |

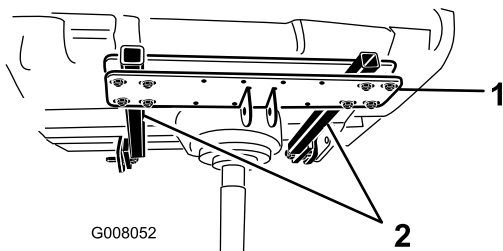
C. Mount a link pin assembly to each support arm and aerator mounting tab with a washer and 2 jam nuts (Figure 4).



**Figure 4**

- |                         |                           |
|-------------------------|---------------------------|
| 1. Link pin assembly    | 4. Washer                 |
| 2. Aerator mounting tab | 5. Jam nuts               |
| 3. Support arm          | 6. Optional mounting hole |

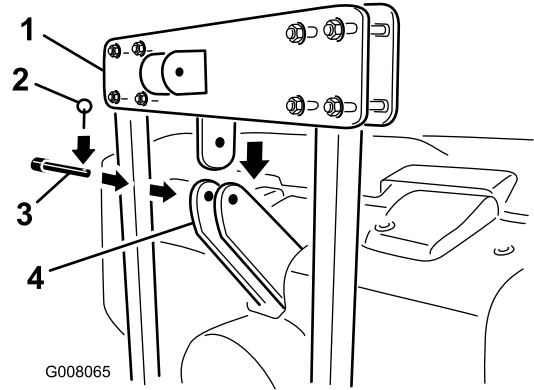
2. Loosely mount the support arms to the hitch cross with 8 screws (1/2 x 4 inch), 16 washers and 8 locknuts. Position as shown in Figure 5.



**Figure 5**

- |                |                |
|----------------|----------------|
| 1. Hitch cross | 2. Support arm |
|----------------|----------------|

3. Secure the lower hitch cross tab to the aerator bracket with link pin and lynch pin (Figure 6).

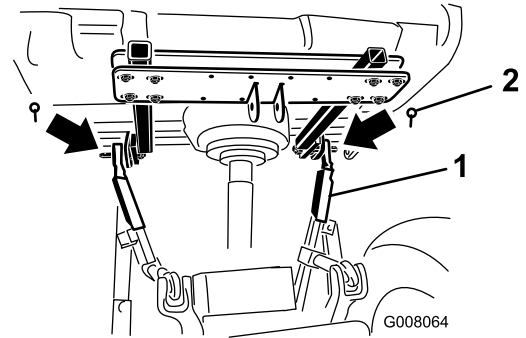


**Figure 6**

- |                      |                    |
|----------------------|--------------------|
| 1. Lower hitch cross | 3. Lynch pin       |
| 2. Link pin          | 4. Aerator bracket |

4. Tighten the nuts securing the hitch cross to the support tubes.

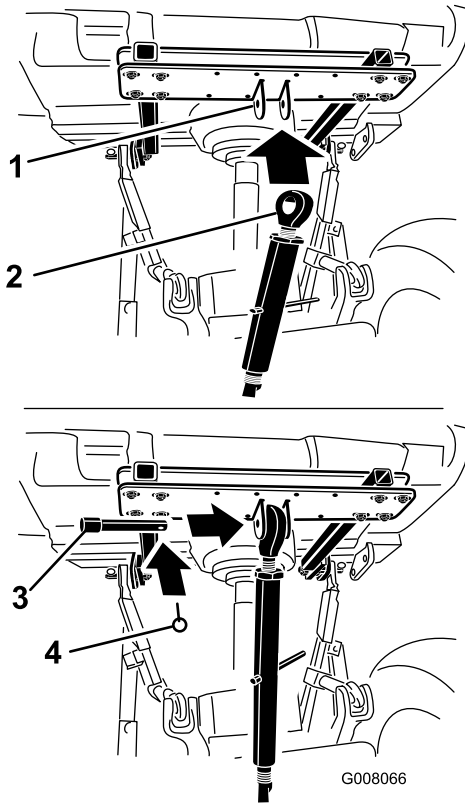
5. Insert the right and left lower link arms onto the link pins and secure with lynch pins (Figure 7).



**Figure 7**

- |                    |               |
|--------------------|---------------|
| 1. Lower link arms | 2. Lynch pins |
|--------------------|---------------|

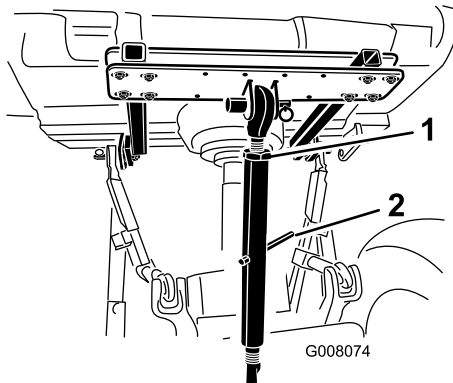
- Connect the hitch upper link to hitch cross tab and secure with link pin and lynch pin (Figure 8).



**Figure 8**

- |                     |              |
|---------------------|--------------|
| 1. Hitch cross tab  | 3. Link pin  |
| 2. Hitch upper link | 4. Lynch pin |

- Rotate the adjusting link to tighten the link (Figure 9). Do not overtighten to raise the back end of the aerator off the ground.

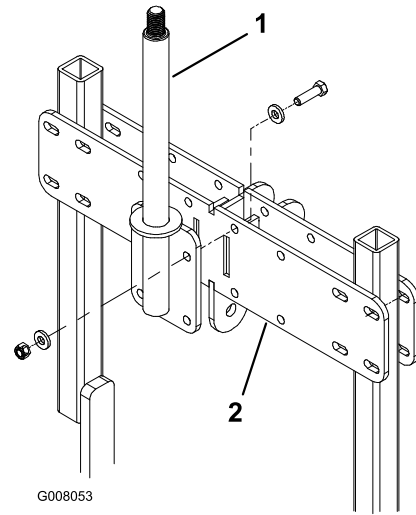


**Figure 9**

- |             |                   |
|-------------|-------------------|
| 1. Lock nut | 2. Adjusting link |
|-------------|-------------------|

- Tighten lock nut to secure upper link into position (Figure 9).

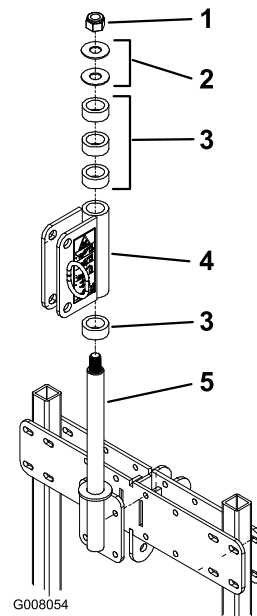
- Mount the pin assembly to the back of the hitch cross with 4 screws (1/2 x 1-3/4 inch), 8 washers and 4 locknuts (Figure 10). Use the center mounting position for the ProCore 880 and ProCore 864 aerators and the offset position for the 660 aerator as shown in Figure 10.



**Figure 10**

- |                 |                |
|-----------------|----------------|
| 1. Pin assembly | 2. Hitch cross |
|-----------------|----------------|

- Insert a pipe spacer and the pivot hitch onto the pin assembly (Figure 11).



**Figure 11**

- |                |                 |
|----------------|-----------------|
| 1. Locknut     | 4. Pivot hitch  |
| 2. Washer      | 5. Pin assembly |
| 3. Pipe spacer |                 |

- Insert 3 pipe spacers and 2 washers onto the pin assembly. Secure the assembly with a 1 inch locknut (Figure 11).

# 2

## Mounting the Tow-Arms

### Parts needed for this procedure:

1	Tow arm, R.H.
1	Tow arm, L.H.
2	Flag pin
2	Screw (3/8 x 1-1/4 inch)
2	Flange nut
1	Mount tab
4	Screw (1/2 x 2-1/4 inch)
8	Washer
4	Locknut

### Procedure

1. Mount a tow-arm to each tab on the front of the core processor with a flag pin (Figure 12). Secure the flag pins to the tow-arms with 3/8 x 1-1/4 inch screws and flange nuts. Position the tow-arms as shown in Figure 12.

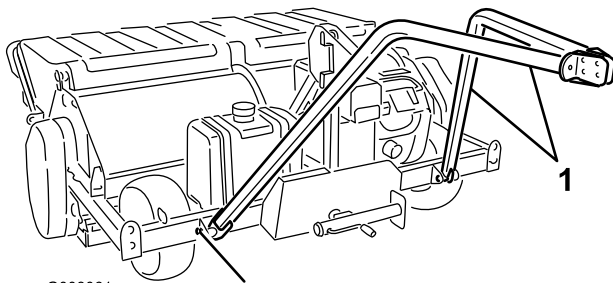


Figure 12

1. Tow-arm
2. Flag pin

2. Secure the mount tab between the front of the tow-arms with 4 screws (1/2 x 2-1/4 inch), 8 washers and 4 locknuts. Position the tab as shown in Figure 13. Use the front set of holes for the 660 aerator and the rear set of holes for 864 and 880 aerators.

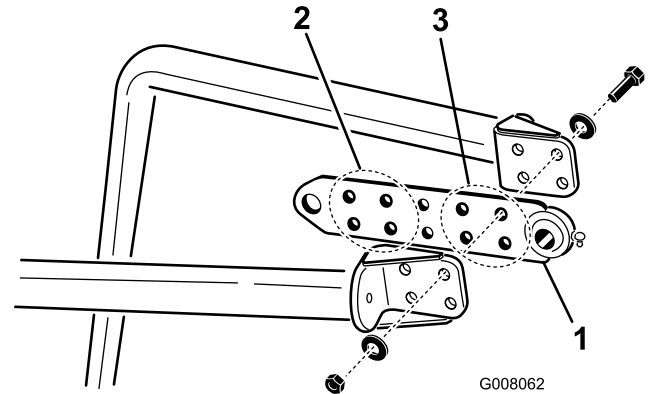


Figure 13

1. Mount tab
2. Holes used for 864 & 880 aerators
3. Holes used for 660 aerator

# 3

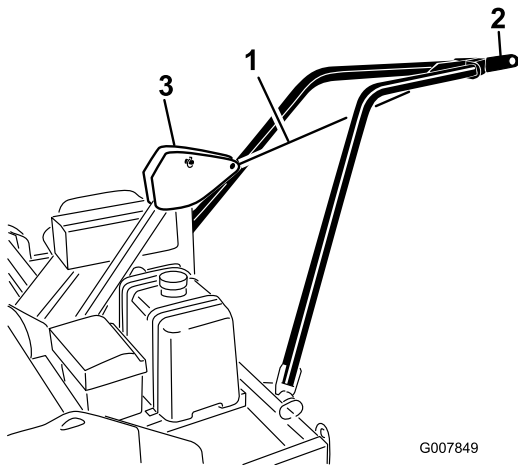
## Mounting the Core Processor to Aerator

### Parts needed for this procedure:

2	Hitch pin
2	Lynch pin

### Procedure

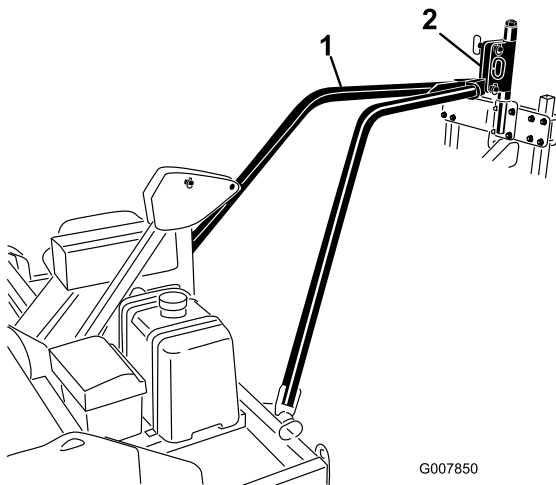
1. Using a tie down or rope, secure the tow-arm hitch plate to the frame hitch pivot while raising the tow-arm for installation (Figure 14).



**Figure 14**

1. Tie down or rope
2. Tow arm hitch plate
3. Frame hitch pivot

2. Back the tractor/aerator into position in front of the core processor.
3. Remove the tie down or rope and lower the tow arm hitch plate into the aerator hitch pivot (Figure 15).

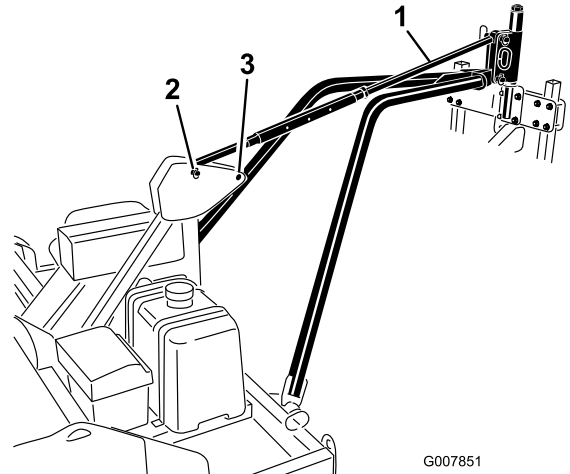


**Figure 15**

1. Tow arm hitch plate
2. Aerator hitch pivot

4. Align the hole in the tow arm hitch plate with the lower holes in the aerator hitch pivot (Figure 16).
5. Secure the tow arm hitch plate to the aerator hitch pivot with a hitch pin and lynch pin (Figure 16).
6. Lower the aerator to the ground
7. Secure the pitch control link to the top holes in the aerator hitch pivot and the frame hitch pivot with hitch pins and lynch pins (Figure 16).

- Connect the control link to the rear holes in the frame hitch pivot when operating a ProCore 660 aerator.
- Connect the control link to the front holes in the frame hitch pivot when operating ProCore 864 and 880 aerators.



**Figure 16**

1. Pitch control link
2. Front mounting holes
3. Rear mounting holes

8. Route the hydraulic hoses to the tractor and connect to the quick couplers. Make sure the hydraulic hoses are properly connected to the processor and the tractor.
9. Route the control harness to the tractor operators position.
10. Secure the hydraulic hoses and the wire harness to the tow-arms with cable ties.

**Important:** When turning the tractor to the right or left, make sure the hydraulic hoses do not become disconnected or damaged.

**Notes:**



# The Toro Total Coverage Guarantee

## A Limited Warranty

### Conditions and Products Covered

The Toro® Company and its affiliate, Toro Warranty Company, pursuant to an agreement between them, jointly warrant your Toro Commercial product ("Product") to be free from defects in materials or workmanship for two years or 1500 operational hours\*, whichever occurs first. This warranty is applicable to all products with the exception of Aerators (refer to separate warranty statements for these products). Where a warrantable condition exists, we will repair the Product at no cost to you including diagnostics, labor, parts, and transportation. This warranty begins on the date the Product is delivered to the original retail purchaser.

\* Product equipped with an hour meter.

### Instructions for Obtaining Warranty Service

You are responsible for notifying the Commercial Products Distributor or Authorized Commercial Products Dealer from whom you purchased the Product as soon as you believe a warrantable condition exists. If you need help locating a Commercial Products Distributor or Authorized Dealer, or if you have questions regarding your warranty rights or responsibilities, you may contact us at:

Commercial Products Service Department  
Toro Warranty Company  
8111 Lyndale Avenue South  
Bloomington, MN 55420-1196  
E-mail: commercial.warranty@toro.com

### Owner Responsibilities

As the Product owner, you are responsible for required maintenance and adjustments stated in your Operator's Manual. Failure to perform required maintenance and adjustments can be grounds for disallowing a warranty claim.

### Items and Conditions Not Covered

Not all product failures or malfunctions that occur during the warranty period are defects in materials or workmanship. This warranty does not cover the following:

- Product failures which result from the use of non-Toro replacement parts, or from installation and use of add-on, or modified non-Toro branded accessories and products. A separate warranty may be provided by the manufacturer of these items.
- Product failures which result from failure to perform recommended maintenance and/or adjustments. Failure to properly maintain your Toro product per the Recommended Maintenance listed in the *Operator's Manual* can result in claims for warranty being denied.
- Product failures which result from operating the Product in an abusive, negligent or reckless manner.
- Parts subject to consumption through use unless found to be defective. Examples of parts which are consumed, or used up, during normal Product operation include, but are not limited to, brakes pads and linings, clutch linings, blades, reels, bed knives, tines, spark plugs, castor wheels, tires, filters, belts, and certain sprayer components such as diaphragms, nozzles, and check valves, etc.
- Failures caused by outside influence. Items considered to be outside influence include, but are not limited to, weather, storage practices, contamination, use of unapproved coolants, lubricants, additives, fertilizers, water, or chemicals, etc.

### Countries Other than the United States or Canada

Customers who have purchased Toro products exported from the United States or Canada should contact their Toro Distributor (Dealer) to obtain guarantee policies for your country, province, or state. If for any reason you are dissatisfied with your Distributor's service or have difficulty obtaining guarantee information, contact the Toro importer. If all other remedies fail, you may contact us at Toro Warranty Company.

- Normal noise, vibration, wear and tear, and deterioration.
- Normal "wear and tear" includes, but is not limited to, damage to seats due to wear or abrasion, worn painted surfaces, scratched decals or windows, etc.

### Parts

Parts scheduled for replacement as required maintenance are warranted for the period of time up to the scheduled replacement time for that part. Parts replaced under this warranty are covered for the duration of the original product warranty and become the property of Toro. Toro will make the final decision whether to repair any existing part or assembly or replace it. Toro may use remanufactured parts for warranty repairs.

### Note Regarding Deep Cycle Battery Warranty:

Deep cycle batteries have a specified total number of kilowatt-hours they can deliver during their lifetime. Operating, recharging, and maintenance techniques can extend or reduce total battery life. As the batteries in this product are consumed, the amount of useful work between charging intervals will slowly decrease until the battery is completely worn out. Replacement of worn out batteries, due to normal consumption, is the responsibility of the product owner. Battery replacement may be required during the normal product warranty period at owner's expense.

### Maintenance is at Owner's Expense

Engine tune-up, lubrication cleaning and polishing, replacement of Items and Conditions Not Covered filters, coolant, and completing Recommended Maintenance are some of the normal services Toro products require that are at the owner's expense.

### General Conditions

Repair by an Authorized Toro Distributor or Dealer is your sole remedy under this warranty.

**Neither The Toro Company nor Toro Warranty Company is liable for indirect, incidental or consequential damages in connection with the use of the Toro Products covered by this warranty, including any cost or expense of providing substitute equipment or service during reasonable periods of malfunction or non-use pending completion of repairs under this warranty. Except for the Emissions warranty referenced below, if applicable, there is no other express warranty.**

All implied warranties of merchantability and fitness for use are limited to the duration of this express warranty. Some states do not allow exclusions of incidental or consequential damages, or limitations on how long an implied warranty lasts, so the above exclusions and limitations may not apply to you.

This warranty gives you specific legal rights, and you may also have other rights which vary from state to state.

### Note regarding engine warranty:

The Emissions Control System on your Product may be covered by a separate warranty meeting requirements established by the U.S. Environmental Protection Agency (EPA) and/or the California Air Resources Board (CARB). The hour limitations set forth above do not apply to the Emissions Control System Warranty. Refer to the Engine Emission Control Warranty Statement printed in your *Operator's Manual* or contained in the engine manufacturer's documentation for details