



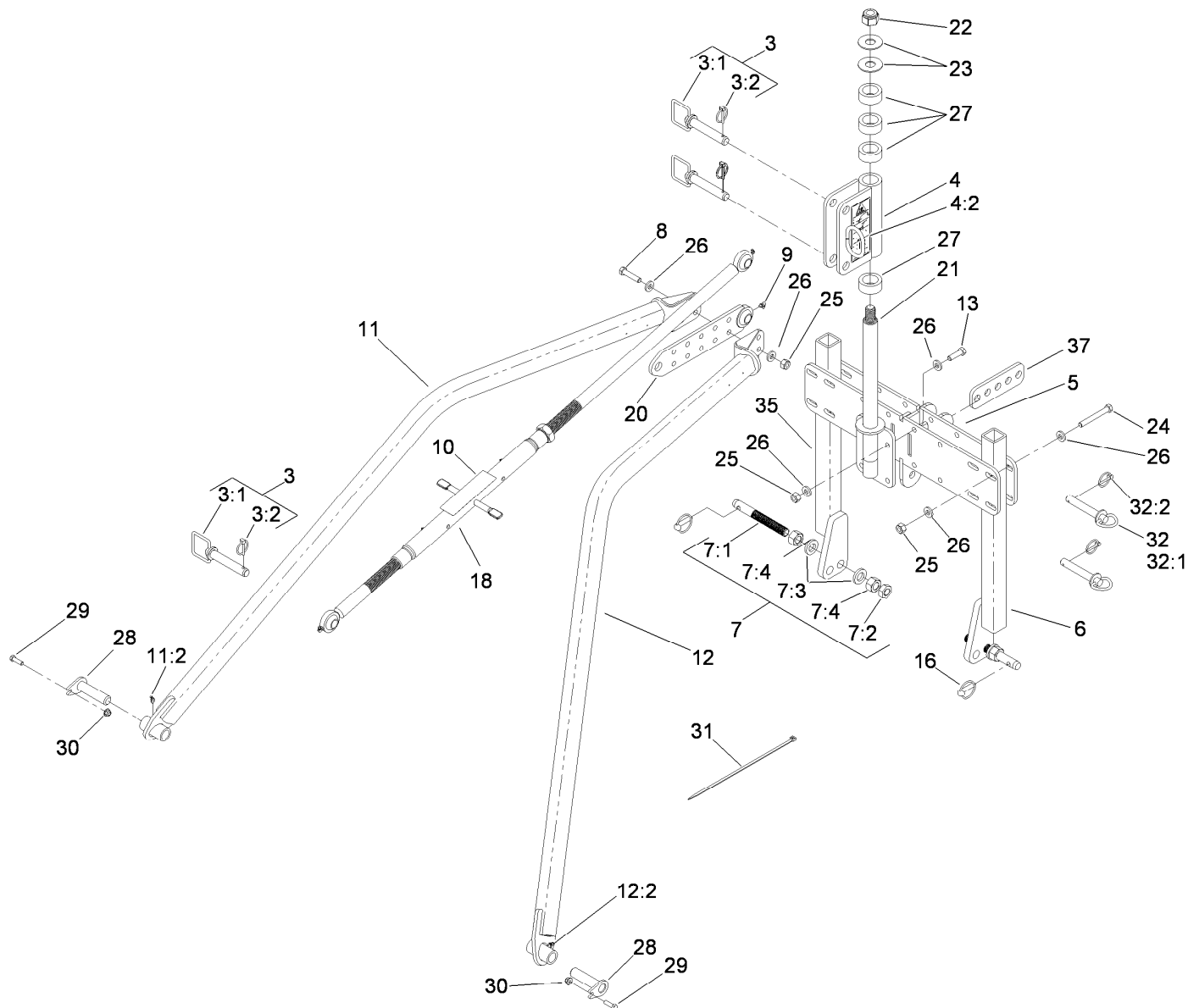
Count on it.

Parts Catalog

OnePass Hitch

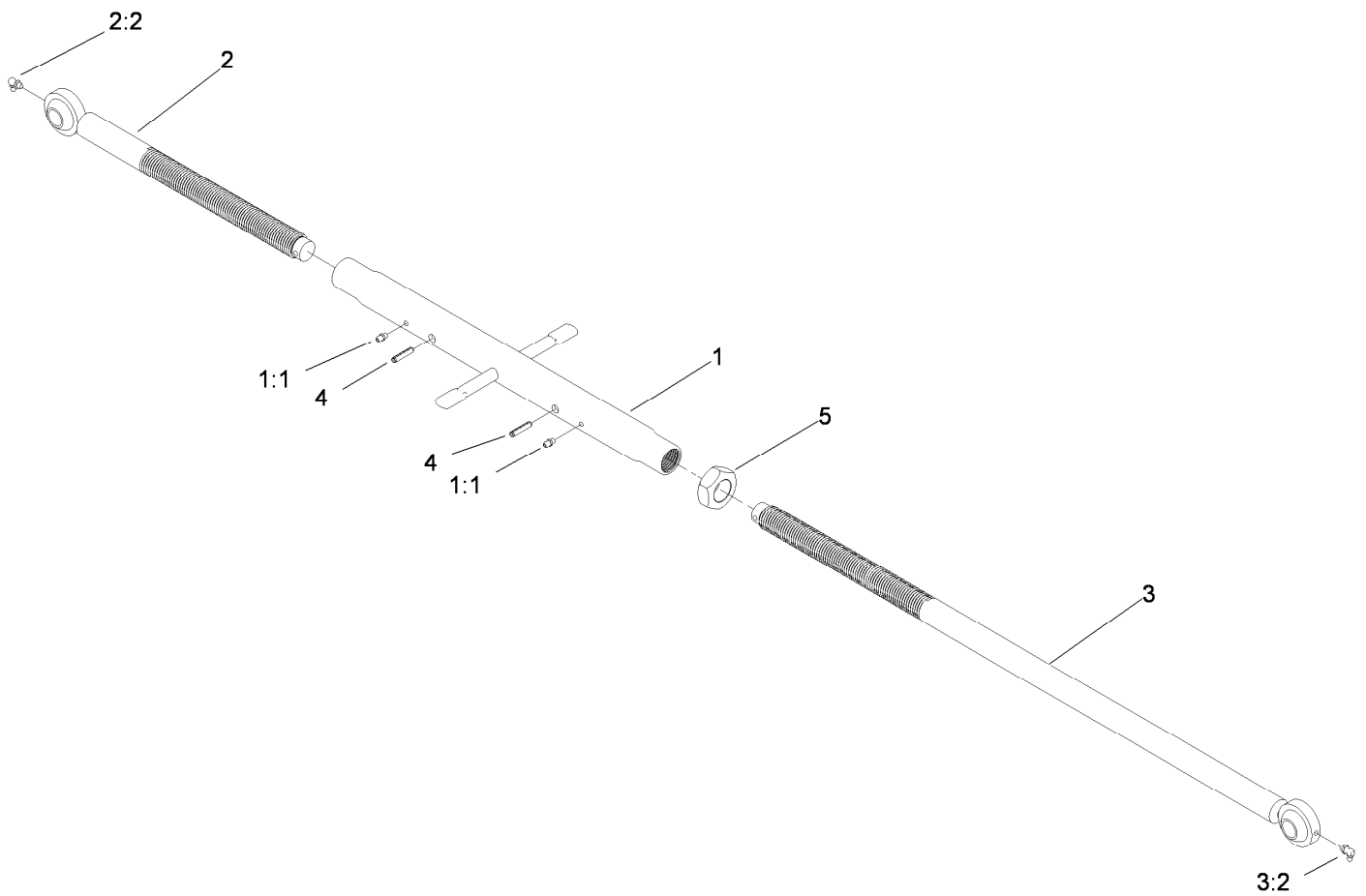
ProCore® Processor

Model No. 09753—Serial No. 31000001 and Up



One Pass Hitch Assembly

Ref.	Part Number	Qty.	Description	Ref.	Part Number	Qty.	Description
3	115-9042	3	Pin-ASM	13	325-7	4	Screw-HH
3:1	112-4378	1	Pin-Hitch	16	283-71	2	Pin-Lynch
3:2	92-1298	1	Pin-Lynch	18	110-2991	1	Pitch Control Link ASM
4	114-7749	1	Hitch-Pivot	20	110-2938	1	Tab-Mount ASM
4:2	112-4277	1	Decal-Danger, Stored Energy	21	112-4638-01	1	Pin ASM
5	110-2839-01	1	Hitch-Cross	22	104-2024	1	Nut-Hex, NI
6	115-8954-01	1	LH Support ASM	23	20-9500	2	Washer
7	115-8906	2	Link Pin ASM	24	325-17	8	Screw-HH
7:1	115-8907	1	Pin	25	3296-25	16	Nut-Lock, NI
7:2	3220-8	1	Nut-Jam	26	107-3395	32	Washer-Hardened
7:3	104-8322	2	Washer-Hardened	27	110-2969	4	Spacer-Pipe
7:4	3219-18	2	Nut-Hex	28	108-0826	2	Pin-Flag
8	325-9	4	Screw-HH	29	323-7	2	Screw-HH
9	302-60	1	Fitting-Grease	30	104-8301	2	Nut-Flange, NI
10	110-2737	1	Decal-Adjust One Pass	31	3334-945	5	Tie-Cable
11	112-4364	1	LH Arm ASM	32	115-9043	2	Pin ASM
11:2	302-11	1	Fitting-Lube, 45 DEG	32:1	13-6200	1	Pin-Hitch, Pointed
12	112-4365	1	RH Arm ASM	32:2	92-1298	1	Pin-Lynch
12:2	302-11	1	Fitting-Lube, 45 DEG	35	115-8955-01	1	RH Support ASM
				37	115-8944-01	1	Plate-Extension



Pitch Control Link Assembly No. 110-2991

<i>Ref.</i>	<i>Part Number</i>	<i>Qty.</i>	<i>Description</i>
1	110-2992	1	Tube ASM
1:1	302-5	2	Fitting-Grease
2	110-2993	1	LH Rod And Ball ASM
2:2	302-60	1	Fitting-Grease
3	110-2994	1	RH Rod And Ball ASM
3:2	302-60	1	Fitting-Grease
4	32121-9	2	Pin-Roll, Slotted
5	01-191-2007	1	Nut-Jam



Count on it.