



TRX-15 Trencher

Model No. 22970 - 290000001 and up.

Parts Catalog

Ordering Replacement Parts

To order replacement parts, please supply the part number, the quantity, and the description of each part desired.

Understanding Reference Numbers

Each Identified part in an illustration has a reference number. The reference number for a part also appears in the parts list, along with other information about the part.

This catalog uses two special reference number formats, one to indicate parts in a service assembly and another to indicate the quantity of a given part in an illustration.

Service Assembly Reference Numbers

Parts in service assemblies have reference numbers in the form a:b. The a represents the reference number of the entire service assembly and the b represents a sequential number unique to each part within the service assembly.

For example, a wheel assembly might be identified by reference number 6, the tire by 6:1, the valve by 6:2, and the wheel by 6:3. When you order the assembly identified by reference number 6, you receive all parts identified by reference numbers 6:1, 6:2, and 6:3. However, you may also order any part individually. Reference numbers of this type appear in illustrations and in part lists.

Reference Numbers Indicating Quantity

In an illustration, if a reference number indicates more than one part, the reference number has the form nX y. The n represents the quantity of the part, the X is the multiplication symbol, and the y represents the reference number.

For example, in an illustration, the reference number 2X 37 means that two of the parts identified by reference number 37 are indicated.

Contents

Description	Page	Description	Page
Frame Assembly 3	Hydraulic Routing Assembly 18
Track and Drive Assembly 4	Electrical Assembly 19
Hydraulic Pump Assembly No. 115-4034 and 115-4035 6	Cylinder and Crankcase Assembly 20
Hydraulic Motor Assembly No. 104-8470 7	Piston and Crankshaft Assembly 21
Parking Brake Assembly 8	Valve and Camshaft Assembly 22
Engine Assembly 9	Lubrication Equipment Assembly 23
Control Assembly 11	Cooling Equipment Assembly 24
Trencher Assembly 12	Electric Equipment Assembly 25
Hydraulic Motor Assembly No. 114-3053 13	Control Equipment Assembly 26
Hydraulic Cylinder Assembly No. 112-2602 14	Carburetor Assembly 27
Control Tower Assembly 15	Air Filter and Muffler Assembly 28
Hydraulic Control Assembly 16	Fuel Tank and Valve Assembly 29
2-Spool Valve Assembly No. 115-4062 17	Starter Assembly 30
		Label Set 31
		Attachments and Accessories List 32

Part Description Abbreviations

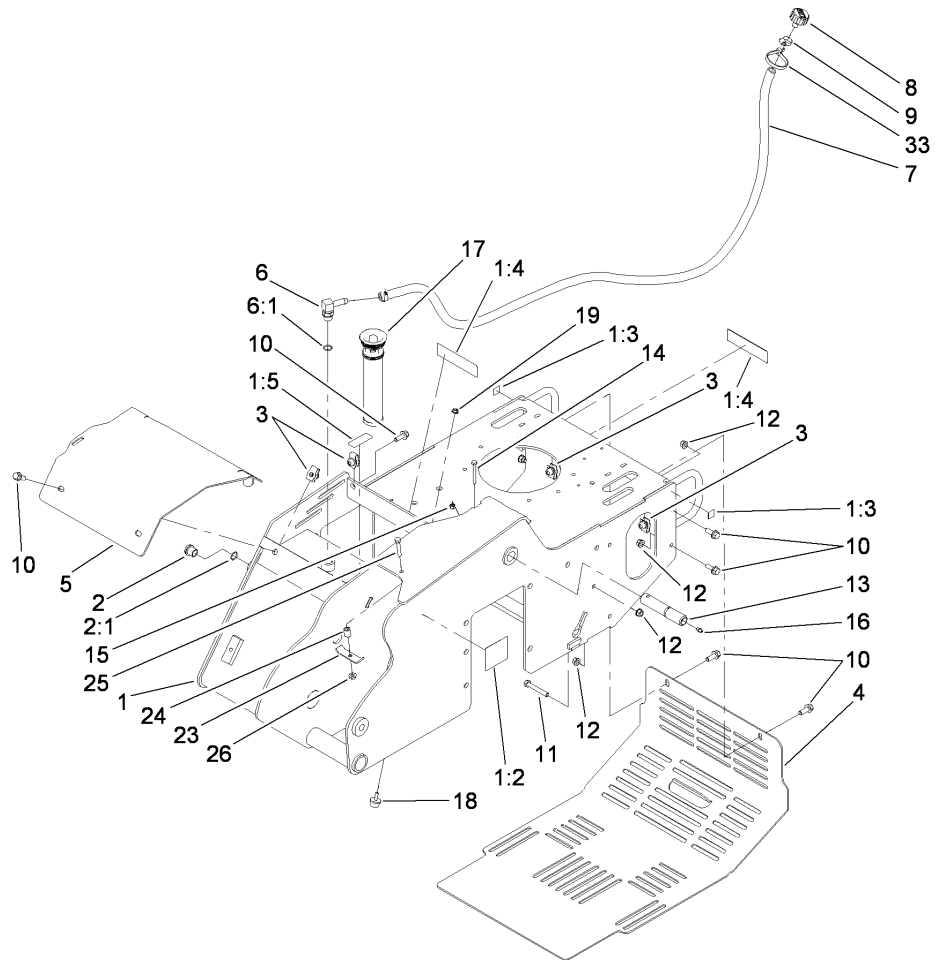
Part descriptions in this catalog may include the following abbreviations.

AR. as required	HYD. hydraulic
ASM. assembly	LH. left hand
BBC. blade brake clutch	NI. nylon insert
CARR. carriage	NPTF. national pipe thread fine
DEG. degrees	PFH. phillips flat head
EXT. external	PPH. phillips pan head
FH. flat head	PPHTF. phillips pan head thread forming
GA. gauge	PRH. phillips round head
HD. heavy-duty	PTH. phillips truss head
HF. hex flange	PTO. power-take-off
HH. hex head	RH. right hand
HHF. hex head flange	ROPS. roll-over protection system
HHFTF. hex head flange thread forming	SFH. slotted fillister head
HJ. hex jam	SHH. slotted hex head
HLH. hex lag head	SHWH. slotted hex washer head
HOC. height-of-cut	SPH. slotted pan head
HSBH. hex socket button head	SQH. square head
HSFH. hex socket flat head	SRH. slotted round head
HSH. hex socket head	STD. standard
HWH. hex washer head	TAP. self tapping
HWHTF. hex washer head thread forming	TTH. torx truss head

Footnotes

❶ Not illustrated

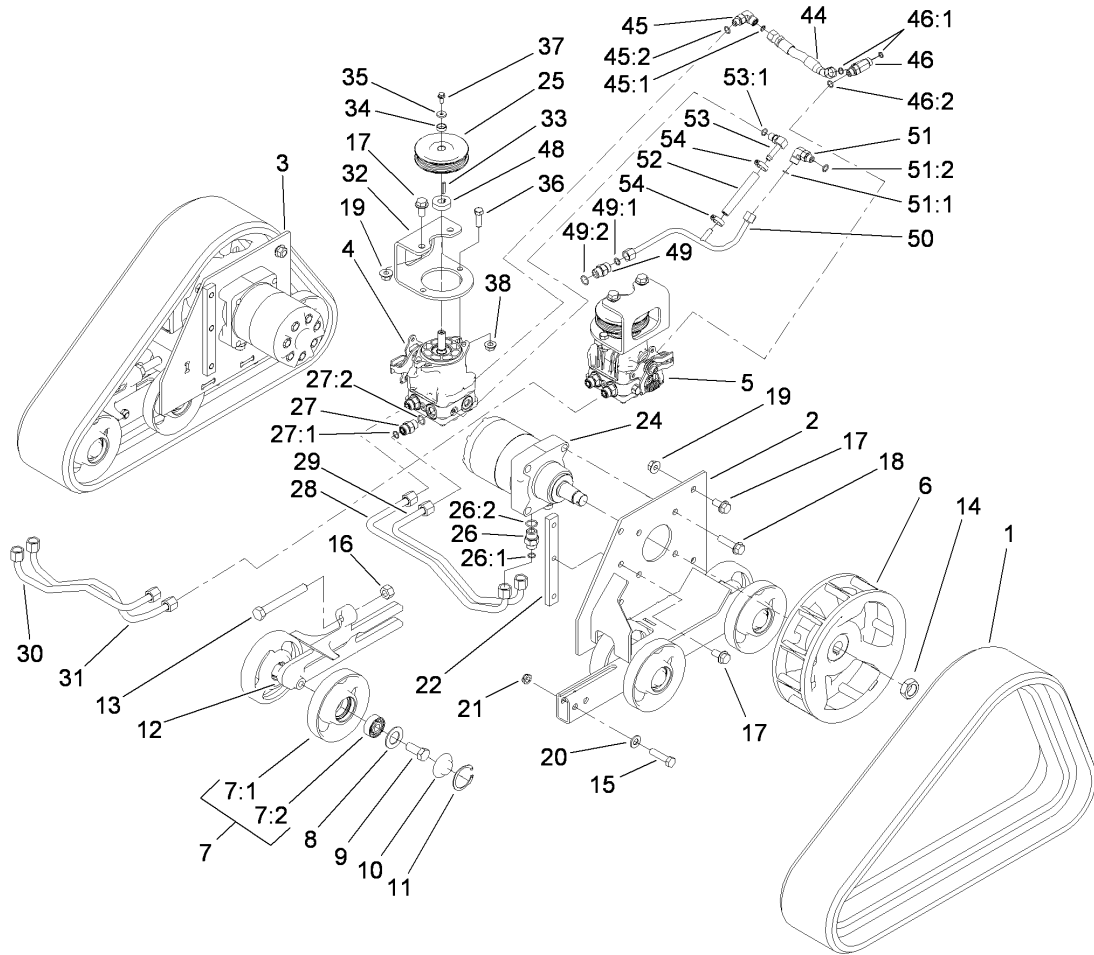
❷ Not serviced separately



Frame Assembly

Ref	Part No.	Qty.	Description
1	114-8630	1	Main Frame ASM
1:2	100-4650	1	Decal-Warning
1:3	93-9084	2	Decal-Point, Lift
1:4	93-7814	2	Decal-Danger
1:5	93-6686	1	Decal-Oil, HYD
2	114-3075	1	Glass-Sight
2:1	237-79	1	O-Ring
3	112-4576	5	Nut-Tinnerman
4	115-6503-01	1	Cover-Rear
5	115-6624-03	1	Plate-Cover,Front
6	354-120	1	Fitting-HYD, 90 DEG
6:1	237-79	1	O-Ring
7	114-3042	1	Hose-Breather
8	68-6150	1	Breather
9	2412-36	2	Clamp-Hose
10	3234-11	5	Screw-HHF
11	323-12	1	Screw-HH
12	32128-40	2	Nut-Flange
13	114-2937	1	Pin-Pivot
14	321-18	1	Screw-HH
15	3296-42	1	Nut-Lock, NI
16	302-5	1	Fitting-Grease
17	114-3039	1	In-Tank Filter ASM
18	1-523420	1	Bumper

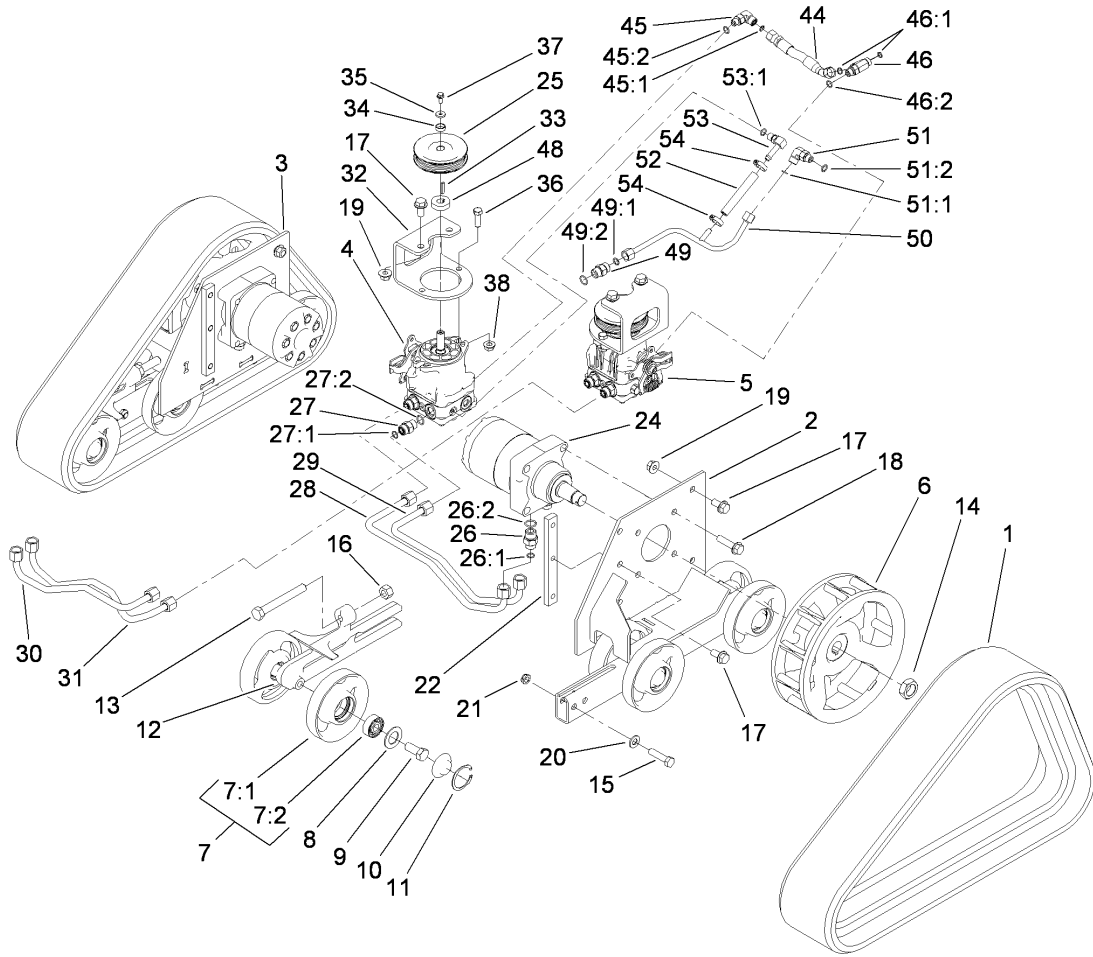
Ref	Part No.	Qty.	Description
19	32128-33	1	Nut-HF
23	100-4860	1	Bracket-Clamp
24	93-5023	1	Spacer
25	322-10	1	Screw-HH
26	32128-20	1	Nut-HF
33	3334-945	1	Tie-Cable



Track and Drive Assembly

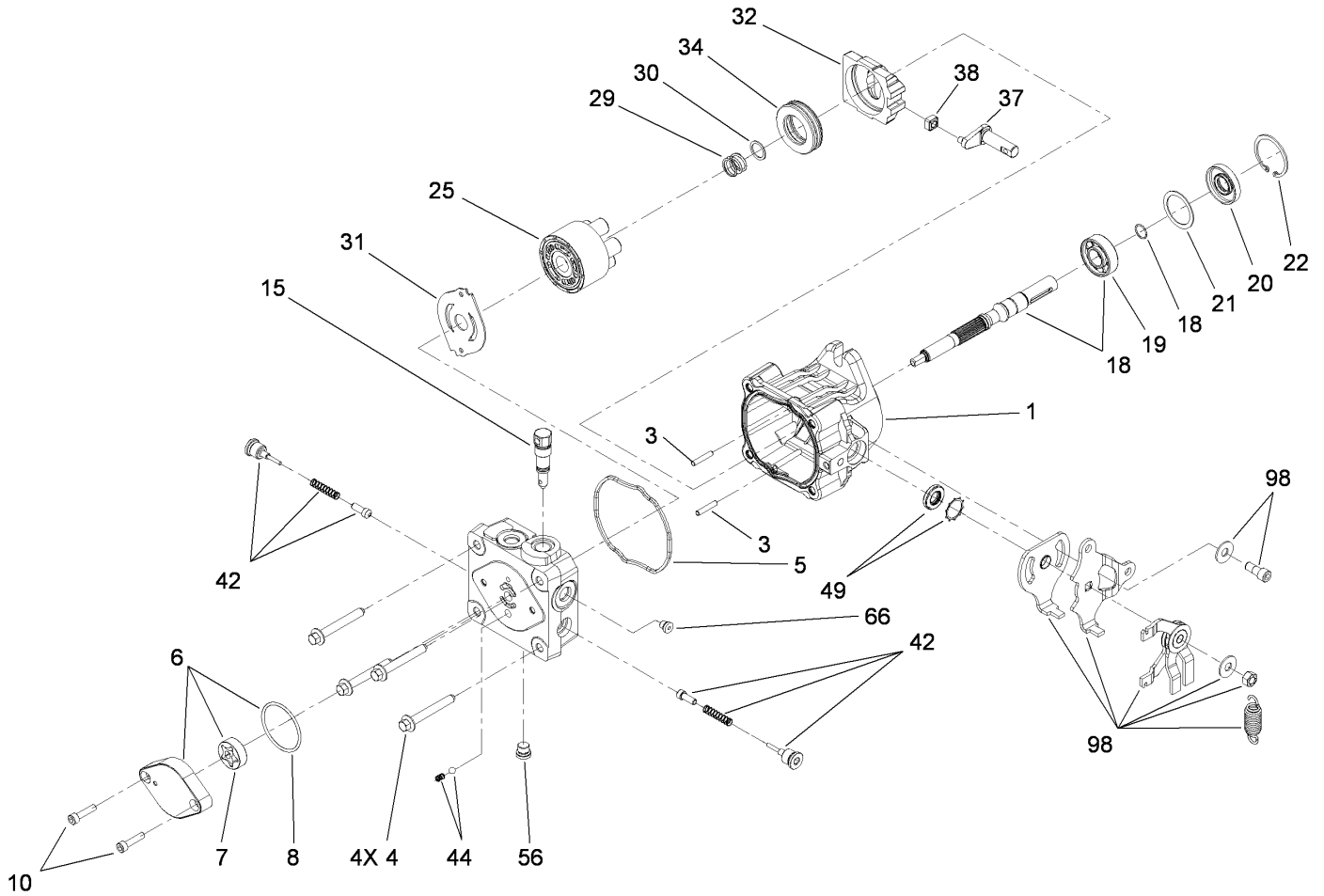
Ref	Part No.	Qty.	Description
1	112-4816	2	Track-Rubber
2	114-2992-03	1	LH Track Frame ASM
3	114-2993-03	1	RH Track Frame ASM
4	115-4034	1	Pump-HYD, RH
5	115-4035	1	Pump-HYD, LH
6	115-3882-03	2	Wheel-Drive
7	112-4817	12	Wheel-Tensioner
7:1	114-3014-03	1	Wheel-Track
7:2	93-4237	1	Bearing
8	106-7585	12	Gasket-Bogie
9	327-4	12	Screw-HH
10	106-7557	12	Cap-Wheel, Bearing
11	106-7595	12	Ring-Snap, Internal
12	114-3077-03	2	Tensioner-Track
13	112-4874	2	Screw-HH, TAP
14	106-8159	2	Nut-Lock
15	325-8	4	Screw-HH
16	3217-11	2	Nut-Hex
17	3234-6	14	Screw-HHF
18	3234-27	8	Screw-Flange
19	32128-49	8	Nut-HHF
20	3256-26	4	Washer-Flat
21	3296-45	4	Nut-Lock, NI
22	114-3091	2	Bar-Thread

Ref	Part No.	Qty.	Description
24	104-8470	2	Motor-Wheel, HYD
25	115-1298	2	Sheave-5K
26	340-6	4	Fitting-HYD, Straight
26:1	237-30	1	O-Ring
26:2	237-80	1	O-Ring
27	340-4	4	Fitting-HYD, Straight
27:1	237-30	1	O-Ring
27:2	237-79	1	O-Ring
28	115-1285	1	HYD Tube ASM
29	115-1286	1	HYD Tube ASM
30	115-1287	1	HYD Tube ASM
31	115-1288	1	HYD Tube ASM
32	115-1289-01	2	Bracket-Mount, Pump
33	80-6090	2	Key-Pump
34	108-4211	2	Bushing
35	73-3580	2	Washer
36	324-5	4	Screw-HH
37	33103-016	2	Screw-HHF
38	32128-42	4	Nut-HF
44	115-1297	1	HYD Hose ASM
45	340-77	1	Fitting-HYD, 90 DEG
45:1	237-22	1	O-Ring
45:2	237-42	1	O-Ring
46	340-86	1	Fitting-Tee



Track and Drive Assembly (continued)

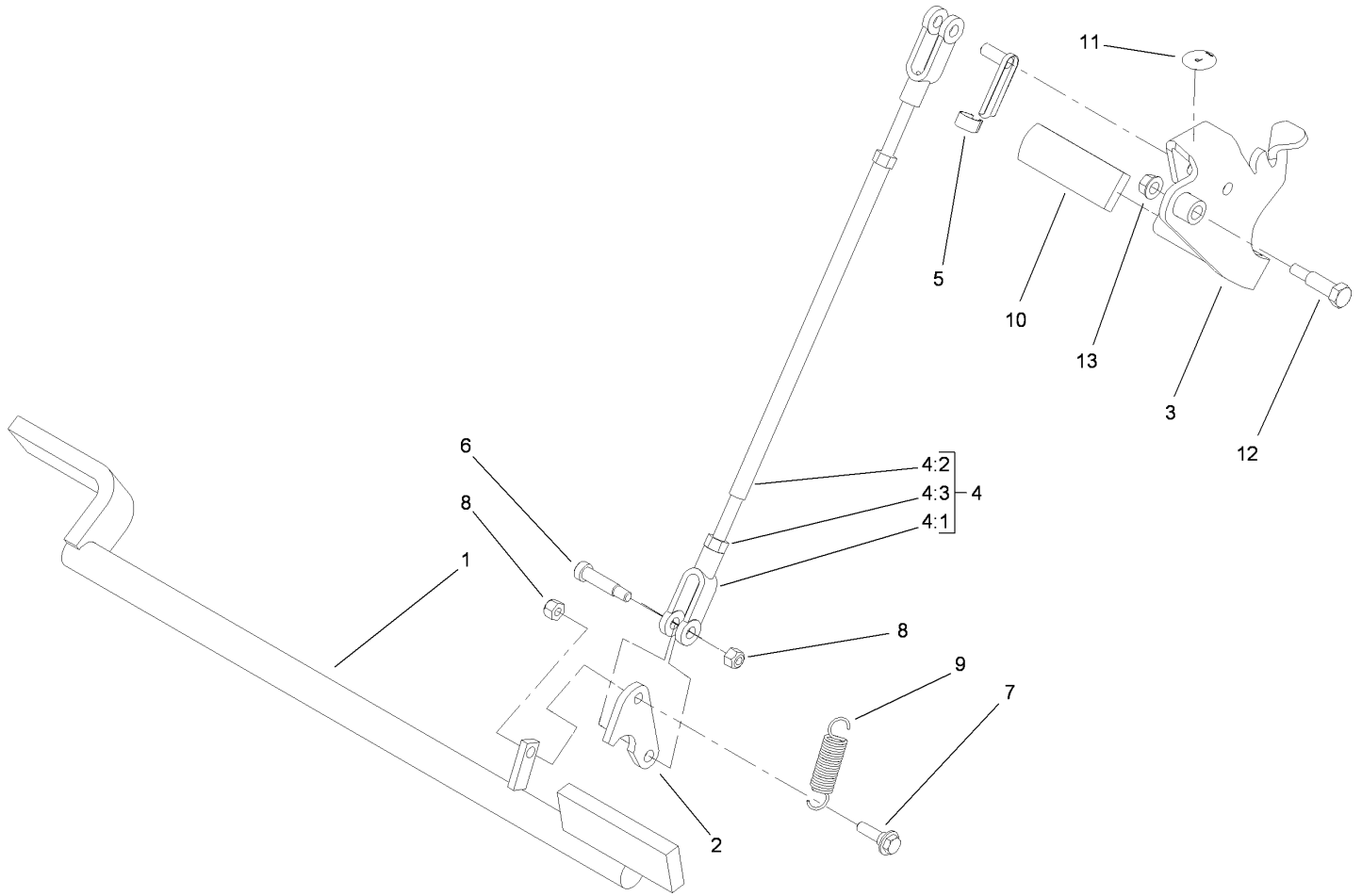
Ref	Part No.	Qty.	Description
46:1	237-22	2	O-Ring
46:2	237-42	1	O-Ring
48	115-4002	2	Spacer
49	340-3	1	Adapter
49:1	237-22	1	O-Ring
49:2	237-79	1	O-Ring
50	117-1305	1	HYD Tube ASM
51	340-77	1	Fitting-HYD, 90 DEG
51:1	237-22	1	O-Ring
51:2	237-42	1	O-Ring
52	115-4083	1	Hose
53	100-4887	1	Fitting-Barb
53:1	237-42	1	O-Ring
54	103-1988	2	Clamp-Hose



Hydraulic Pump Assembly No. 115-4034 and 115-4035

Ref	Part No.	Qty.	Description
1	115-4464	1	Housing-Kit
3	106-8753	2	Pin-Headless, Straight
4	106-8754	4	Bolt-HF
5	106-8755	1	O-Ring
6	106-8756	1	Charge Pump Kit
7	104-2122	1	Gerotor ASM
8	106-8757	1	O-Ring
10	104-2111	2	Capscrew
15	106-8759	1	Bypass Valve Kit
18	103-2664	1	Input Shaft Kit
19	104-5311	1	Bearing-Ball
20	104-5310	1	Seal-Lip
21	104-5308	1	Spacer
22	104-5309	1	Ring-Retaining
25	103-2666	1	Cylinder Block Kit
29	94-1936	1	Spring-Block
30	94-1937	1	Washer-Thrust, Block
31	105-6185	1	Plate-Valve
32	94-1907	1	Swashplate-Variable
34	94-6922	1	Bearing-Thrust
37	115-4458	1	Arm-Trunnion, Tapered Square
38	94-1910	1	Guide-Slot
42	98-3252	2	Valve-Check (W/Poppet)
44	106-8760	1	Charge Relief Valve Kit

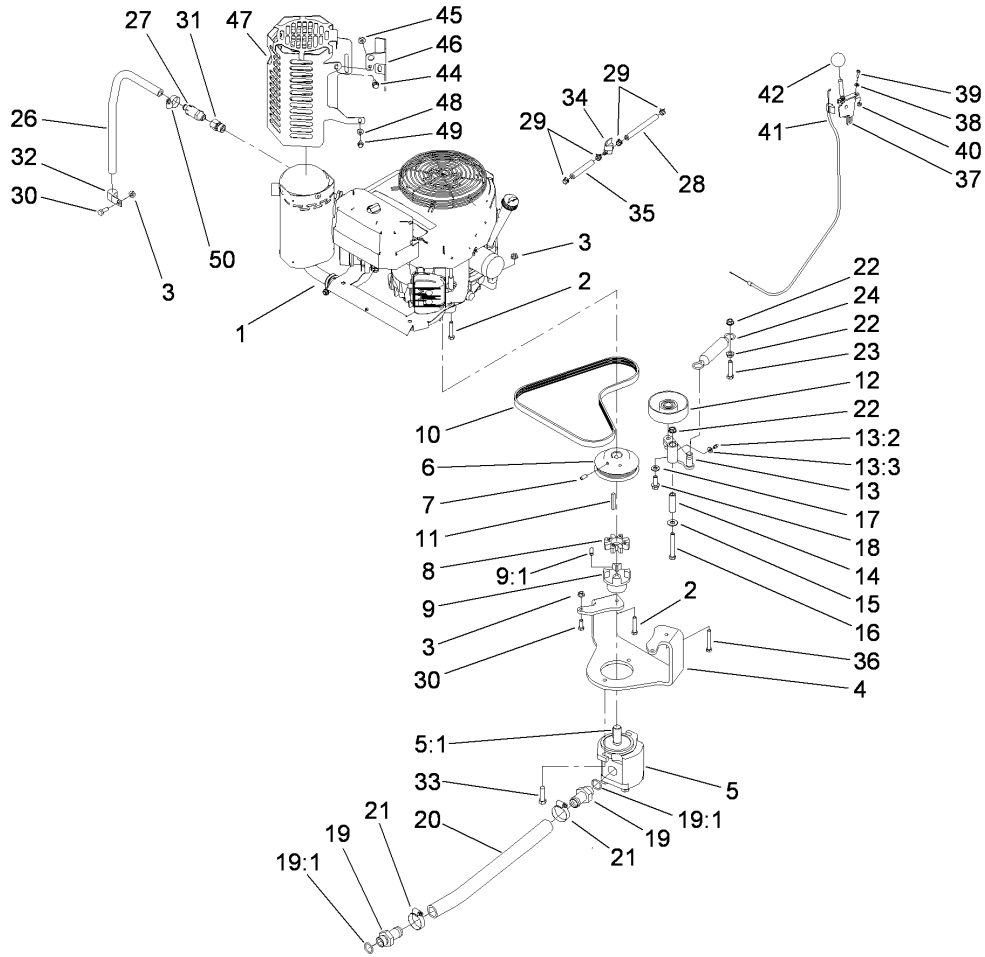
Ref	Part No.	Qty.	Description
49	114-8155	1	Trunnion Seal Kit
56	106-8762	1	Plug-HSH
66	106-8763	1	Plug-HSH
98	115-4046	1	Rtn Kit
99	105-6184	1	Seal Overhaul Kit



Parking Brake Assembly

Ref	Part No.	Qty.	Description
1	114-2972-03	1	Brake Bar ASM
2	114-2975	1	Link-Mounting
3	114-2957-03	1	Brake Handle ASM
4	103-4335	1	Brake Rod ASM
4:1	1-633131	2	Yoke-Linkage, Brake
4:2	103-3907	1	Linkage-Handle, Brake
4:3	3219-3	2	Nut-Hex
5	103-2399	1	Pin-Spring, Clevis
6	114-8629	1	Bolt-Shoulder .31
7	27-7211	1	Screw-Shoulder
8	3296-47	2	Nut-Lock, NI
9	67-1450	1	Spring-Idler
10	62-9130	1	Grip-Handle
11	107-8495	1	Decal-Parking Brake
12	7-0030	1	Screw-Shoulder, HH
13	32128-20	1	Nut-HF

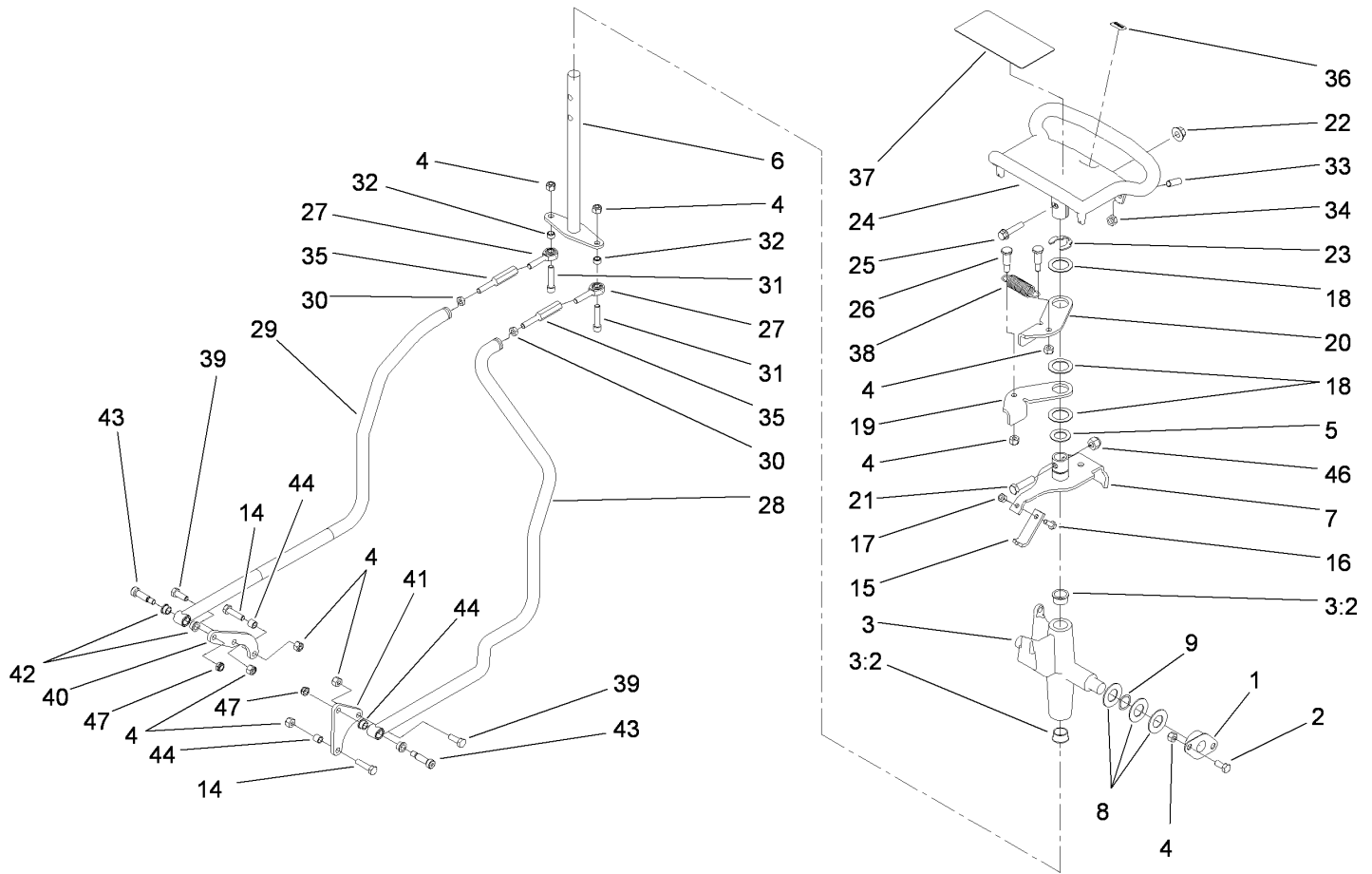
--	--	--	--



Engine Assembly

Ref	Part No.	Qty.	Description
1	114-3070	1	Engine ASM
2	322-9	3	Screw-HH
3	32128-20	7	Nut-HF
4	114-2912-01	1	Mount-Pump
5	114-3072	1	Gear Pump ASM
5:1	104-5839	1	Key-Square
5:2	115-1265	1	Seal Kit
6	114-8559-03	1	Pulley-Engine
7	3246-6	2	Screw-Set, HSH
8	93-8827	1	Spider-Coupler
9	114-2933	1	Coupler-Flex
9:1	100-7594	1	Screw-Set
10	114-2991	1	Belt-V
11	608006	1	Key-Square
12	95-8802	1	Pulley-Idler
13	114-2915	1	Idler Arm ASM
13:2	302-5	1	Fitting-Grease
13:3	3256-22	1	Washer-Flat
14	114-2916	1	Bushing-Idler
15	3256-4	1	Washer-Flat
16	323-13	1	Screw-HH
17	3256-24	1	Washer-Flat
18	3234-11	1	Screw-HHF
19	99-3017	2	Fitting

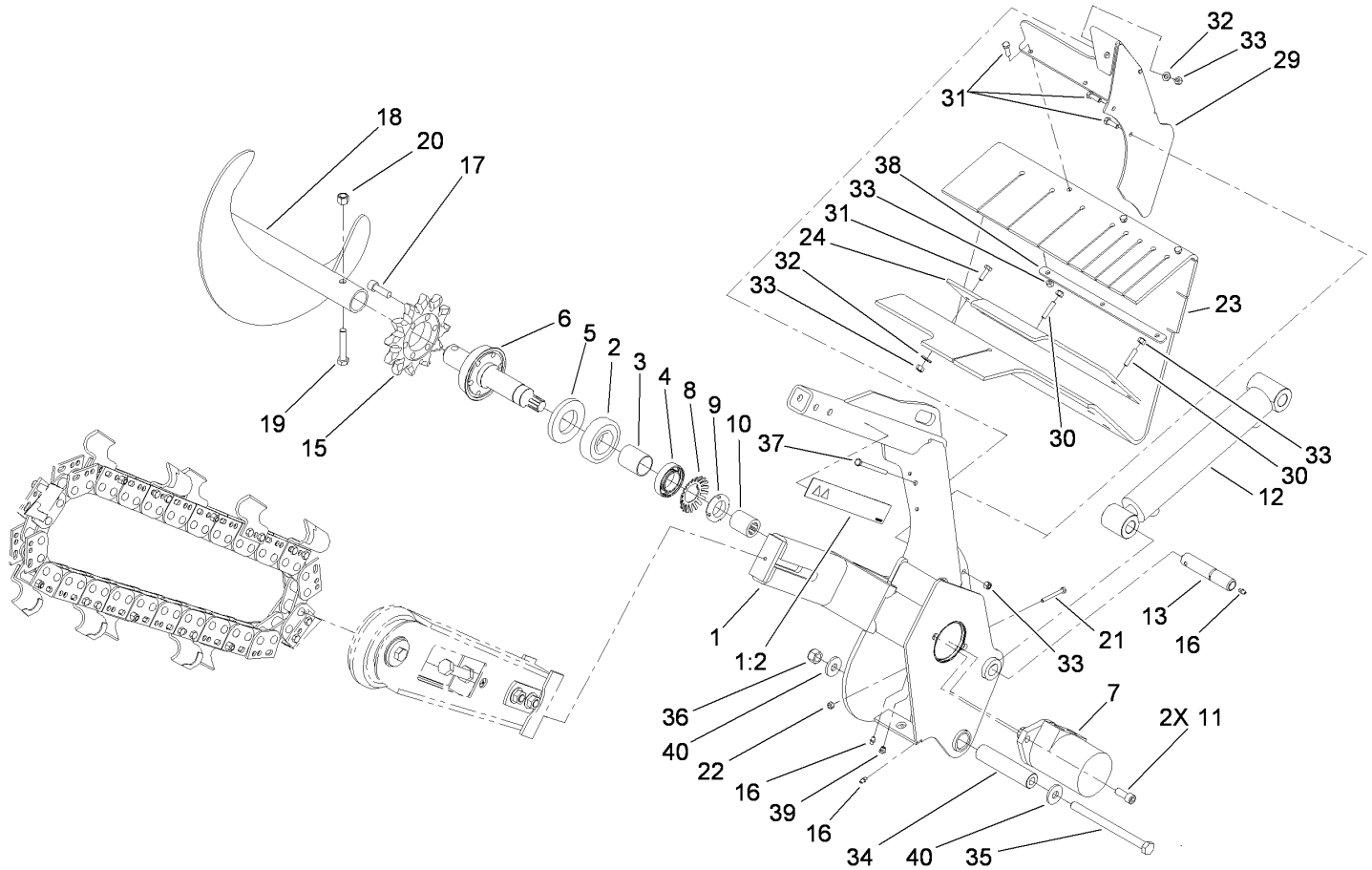
Ref	Part No.	Qty.	Description
19:1	237-81	1	O-Ring
20	114-2917	1	Hose-Suction
21	2412-111	2	Clamp
22	3290-357	3	Nut-HHF, Whiz
23	323-9	1	Screw-HH
24	66-4270	1	Spring-Extension
26	106-5709	1	Hose
27	92-6877	1	Valve-Drain, Oil
28	109-0306	1	Hose-Fuel
29	2412-98	4	Clamp
30	322-4	3	Screw-HH
31	103-1966	1	Adapter
32	2412-81	1	Clamp-R
33	324-6	2	Screw-HH
34	1-603770	1	Valve-Fuel
35	109-0295	1	Hose-Fuel
36	322-11	1	Screw-HH
37	108-9730	2	Control Lever ASM
38	3256-21	4	Washer-Flat
39	3290-134	4	Screw
40	3296-2	4	Nut-Lock, NI
41	115-1211	2	Cable-Control
42	233-42	2	Knob
44	3234-14	3	Screw-HHF



Control Assembly

Ref	Part No.	Qty.	Description
1	68-2970	2	Bushing
2	322-3	4	Screw-HH
3	106-5737	1	Control Support ASM
3:2	256-252	2	Bearing-Flange
4	3296-29	12	Nut-Lock, NI
5	257-8	1	Washer-Thrust
6	106-5745	1	Drive Rod ASM
7	112-2783	1	Pivot Lever ASM
8	3256-39	6	Washer-Flat
9	95-3703	2	Washer-Spring, Wave
14	322-6	2	Screw-HH
15	115-1204	1	Plate-Neutral
16	321-4	1	Screw-HH
17	3296-42	1	Nut-Lock, NI
18	108-9743	3	Washer-Plain
19	98-8407	1	Lever-Return, RH
20	98-8408	1	Lever-Return, LH
21	323-8	1	Screw-HH
22	32128-43	1	Nut-Flange
23	32151-91	1	Ring-Retaining
24	106-7614-03	1	Handle-Control
25	3234-18	1	Screw-HHF
26	63-2650	2	Screw-Shoulder
27	2411-53	2	Bearing-Rod End, LH

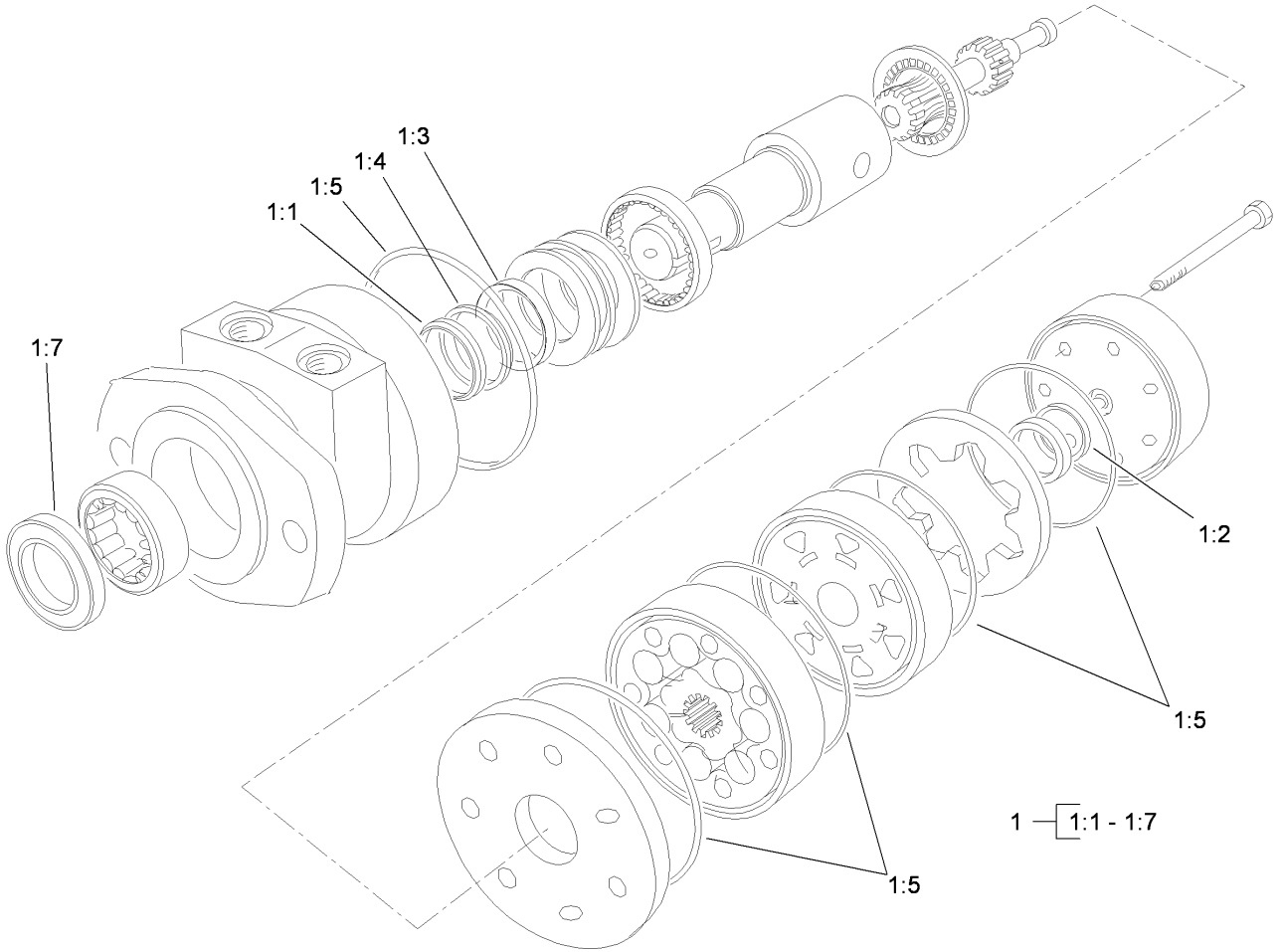
Ref	Part No.	Qty.	Description
28	114-2901	1	LH Control Rod ASM
29	114-2902	1	RH Control Rod ASM
30	3220-2	2	Nut-Jam
31	3274-83	2	Screw-HSH
32	92-3133	2	Spacer-Lever, Traction
33	3247-6	2	Screw-Set
34	3218-3	2	Nut-Jam
35	114-3095	2	Link-Control
36	98-1459	1	Decal
37	115-4020	1	Decal-Traction
38	108-4724	1	Spring-Extension
39	322-4	2	Screw-HH
40	115-1290	1	Plate-Adapter, Control, RH
41	115-1291	1	Plate-Adapter, Control, LH
42	1-603735	4	Bushing-Flanged
43	114-8629	2	Bolt-Shoulder .31
44	1-633545	2	Spacer
46	3296-39	1	Nut-Lock, NI
47	3296-47	2	Nut-Lock, NI



Trencher Assembly

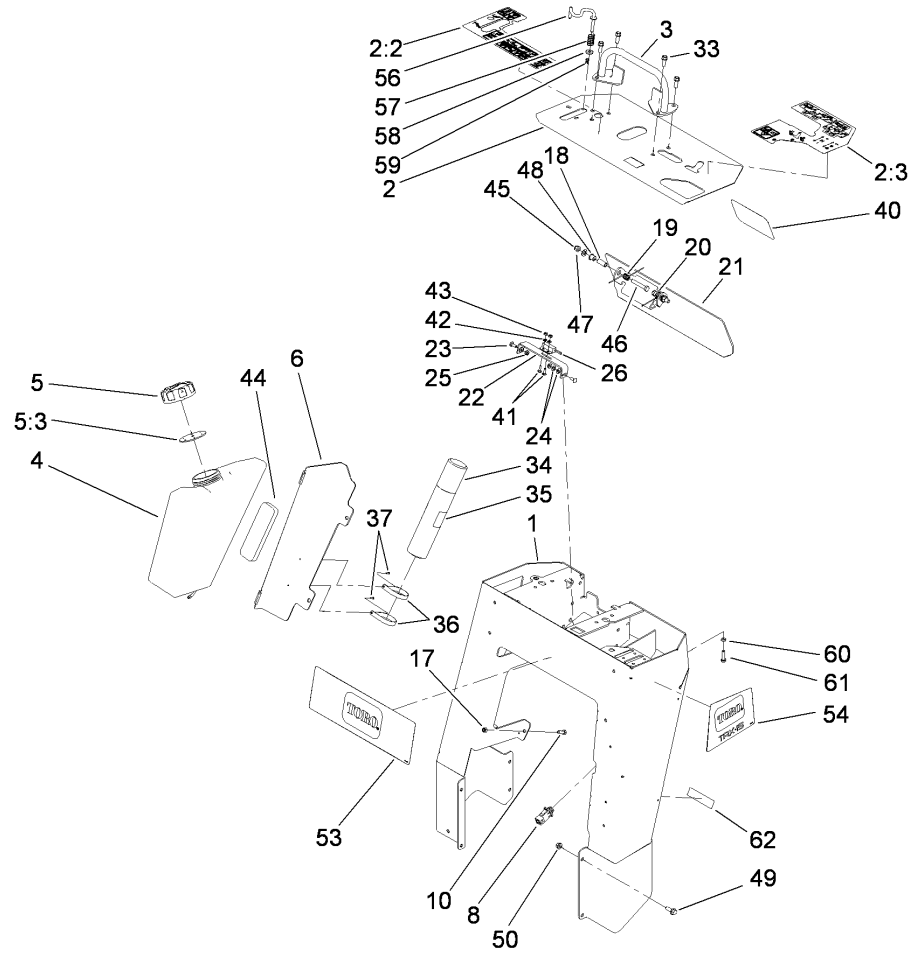
Ref	Part No.	Qty.	Description
1	114-8631	1	Trencher Head ASM
1:2	99-9952	2	Decal-Danger
2	106-8871	1	Bearing-Ball
3	112-4979	1	Spacer
4	111199	1	Bearing-Ball
5	114-2955	1	Seal-Grease
6	112-4993	1	Trencher Shaft ASM
7	114-3053	1	Motor-HYD
8	114-2956	1	Lockwasher-Bearing
9	88-1450	1	Locknut-Bearing
10	114-2954	1	Spline-Collar
11	3274-89	2	Screw-HSH
12	112-2602	1	HYD Cylinder ASM
13	114-2937	1	Pin-Pivot
15	104-1964	1	Sprocket-Trencher
16	302-5	3	Fitting-Grease
17	3274-4	6	Screw-HSH
18	112-4996-03	1	Trencher Auger ASM
19	325-11	1	Screw-HH
20	3296-23	1	Nut-Lock, NI
21	321-18	1	Screw-HH
22	3296-42	1	Nut-Lock, NI
23	114-8569	1	Shield-Dirt
24	115-1220-03	1	Bar-Clamp

Ref	Part No.	Qty.	Description
29	115-1279-03	1	Bracket-Shield
30	115-4049	2	Screw-HSH,
31	322-5	8	Screw-HH
32	3256-3	4	Washer-Flat
33	3296-29	11	Nut-Lock, NI
34	114-8573	1	Spacer-Pivot
35	117-6327	1	Bolt-HH,
36	3296-53	1	Nut-Lock, NI
37	322-23	1	Screw-HH
38	115-4001-03	1	Plate-Strap, Shield
39	302-34	1	Fitting-Lube
40	104-9216	2	Washer-Hardened



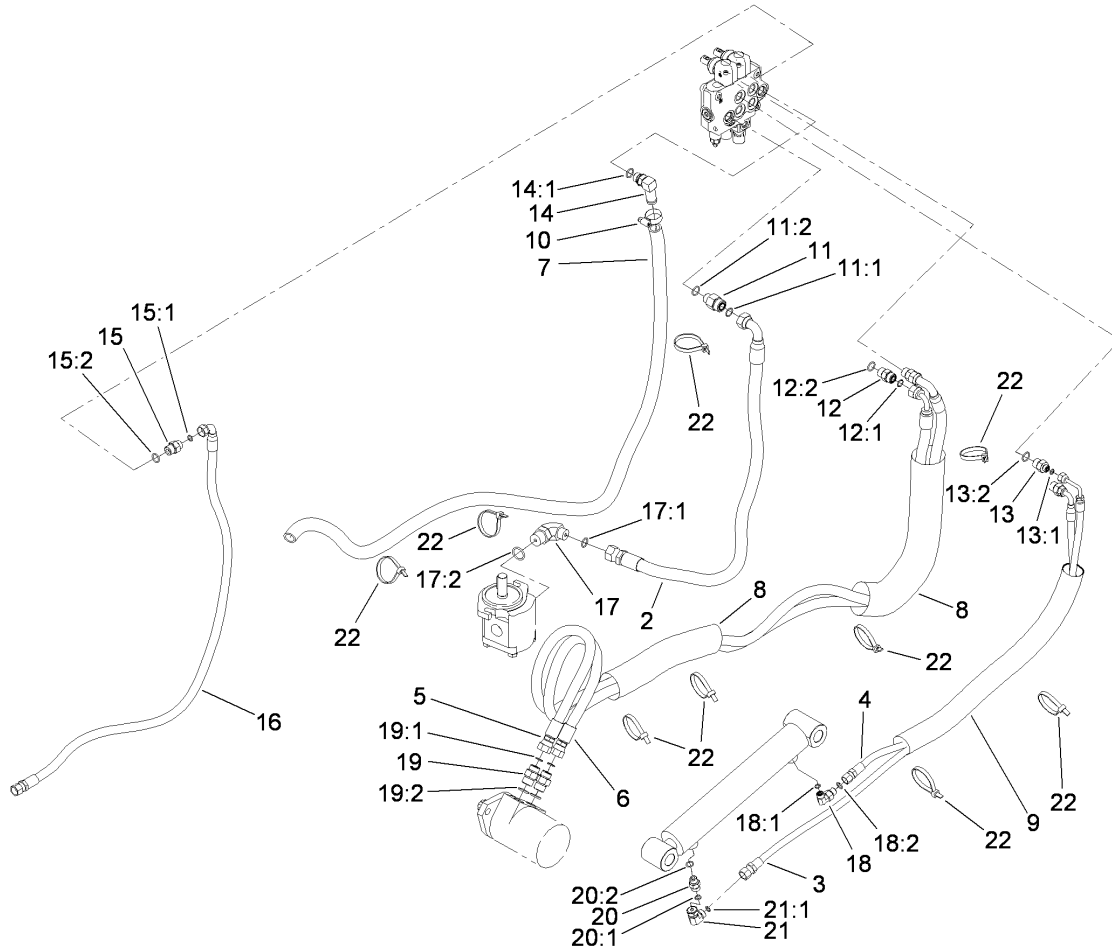
Hydraulic Motor Assembly No. 114-3053

Ref	Part No.	Qty.	Description
1	1-000119	1	Seal Kit
② 1:1		1	Ring-Back Up
② 1:2		1	Seal-Commutator
② 1:3		1	Seal-Shaft (Viton)
② 1:4		1	Washer-Back Up, Steel
② 1:5		5	Ring-Seal (Viton)
② 1:7		1	Seal-Dirt And Water



Control Tower Assembly

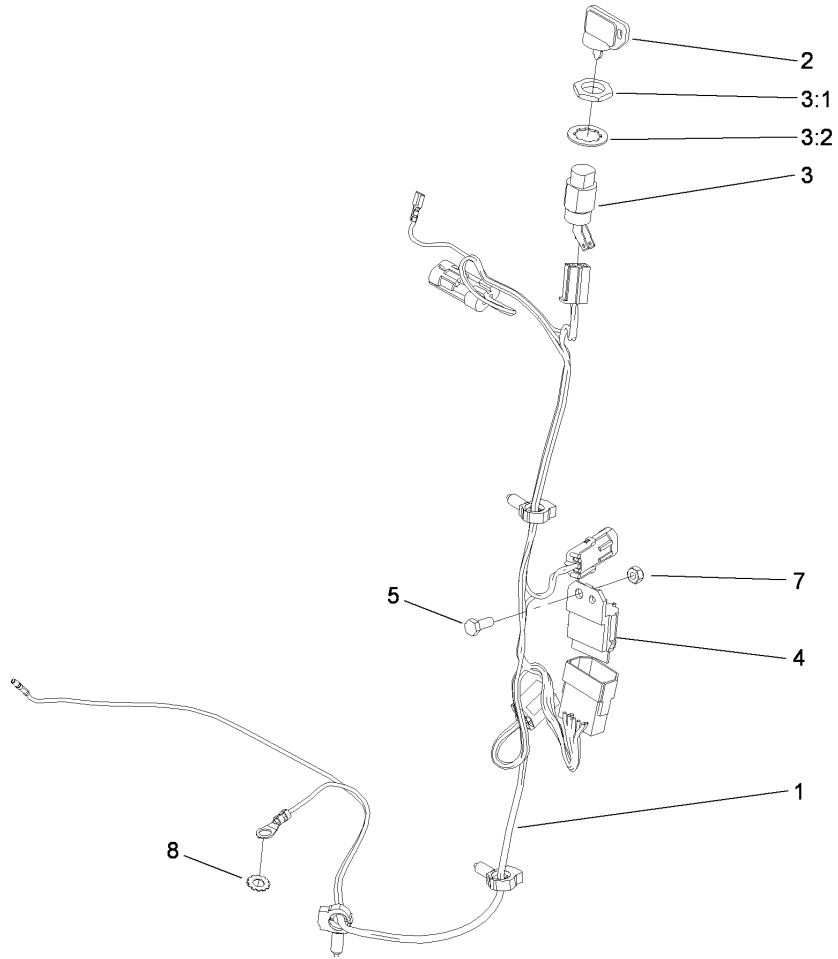
Ref	Part No.	Qty.	Description	Ref	Part No.	Qty.	Description
1	115-4000-01	1	Tower ASM	36	2412-120	2	R-Clamp
2	114-8633	1	Panel-Control	37	3269-17	2	Rivet-Pop
2:2	115-1231	1	Decal-Console, RH	40	105-1217	1	Decal
2:3	115-1230	1	Decal-Console, LH	41	3229-20	2	Screw-CARR
3	106-7715	1	Reference Bar ASM	42	3256-51	2	Washer-Flat
4	112-4972	1	Tank-Fuel	43	32149-7	2	Nut-Keps
5	104-7418	1	Cap-Fuel, Gas	44	107-7507	1	Pad-Foam
5:3	104-7420	1	Gasket-Vented	45	3296-39	2	Nut-Lock, NI
6	114-3065-01	1	Bracket-Cover, Tank	46	323-11	2	Screw-HH
8	100-1268	1	Switch-Plunger	47	3256-24	2	Washer-Flat
10	322-5	2	Screw-HH	48	256-257	2	Bushing-Nyliner
17	3296-29	2	Nut-Lock, NI	49	3234-11	8	Screw-HHF
18	114-1337	2	Spacer-Spring	50	32128-40	8	Nut-Flange
19	98-8425	1	Spring-Torsion, LH	53	115-4004	1	Decal
20	98-8424	1	Spring-Torsion, RH	54	115-4005	1	Decal
21	114-3012-03	1	Reverse Plate ASM	56	114-8727	1	Rod-Interlock
22	100-1263	1	Plate-Switch	57	85-6750	1	Spring-Control
23	3229-1	2	Screw-CARR	58	88-7200	1	Washer-Flat
24	3256-22	4	Washer-Flat	59	3290-307	1	Pin-Hair
25	32149-2	2	Nut-Keps	60	3210-7	1	Screw-HH
26	100-1270	1	Switch-Proximity	61	3220-2	1	Nut-Jam
33	95-1726	4	Screw-Taptite	62	117-2718	1	Decal-Spark Arrester
34	104-7048	1	Cap-Housing				
35	104-7050	1	Housing-Manual				



Hydraulic Routing Assembly

Ref	Part No.	Qty.	Description
2	114-3043	1	Hose ASM
3	114-3044	1	Hose ASM
4	114-3045	1	Hose ASM
5	114-3046	1	Hose ASM
6	114-3085	1	HYD Hose ASM
7	114-3047	1	Hose-Return
8	99-5648	2	Sleeve-Protective
9	115-4064	1	Sleeve-Protective
10	2412-129	2	Clamp-Hose
11	340-155	1	Fitting-HYD, Straight
11:1	237-79	1	O-Ring
11:2	237-151	1	O-Ring
12	340-4	2	Fitting-HYD, Straight
12:1	237-30	1	O-Ring
12:2	237-79	1	O-Ring
13	340-133	2	Adapter
13:1	237-79	1	O-Ring
13:2	237-21	1	O-Ring
14	353-954	1	Adapter
14:1	237-79	1	O-Ring
15	340-3	1	Adapter
15:1	237-22	1	O-Ring
15:2	237-79	1	O-Ring
16	115-1296	1	HYD Hose ASM

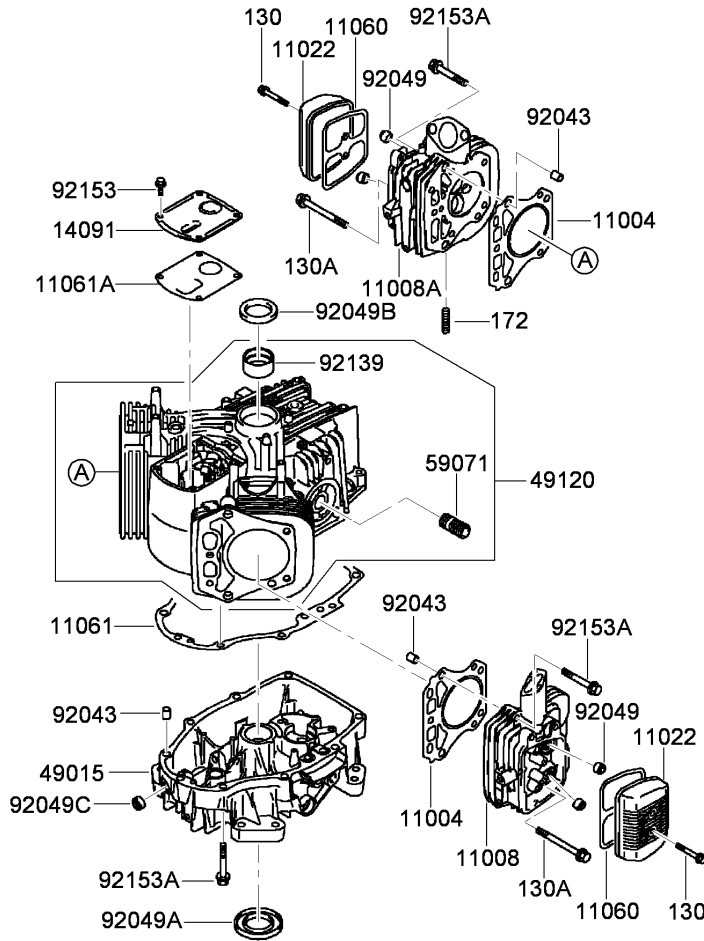
Ref	Part No.	Qty.	Description
17	340-139	1	Fitting-HYD, 90 DEG
17:1	237-81	1	O-Ring
17:2	237-65	1	O-Ring
18	340-82	1	Adapter
18:1	237-42	1	O-Ring
18:2	237-21	1	O-Ring
19	340-6	2	Fitting-HYD, Straight
19:1	237-30	1	O-Ring
19:2	237-80	1	O-Ring
20	115-4081	1	Valve-Check
20:1	237-42	1	O-Ring
20:2	237-22	1	O-Ring
21	340-159	1	Fitting-HYD, 90 DEG
21:1	237-22	2	O-Ring
22	3334-945	9	Tie-Cable



Electrical Assembly

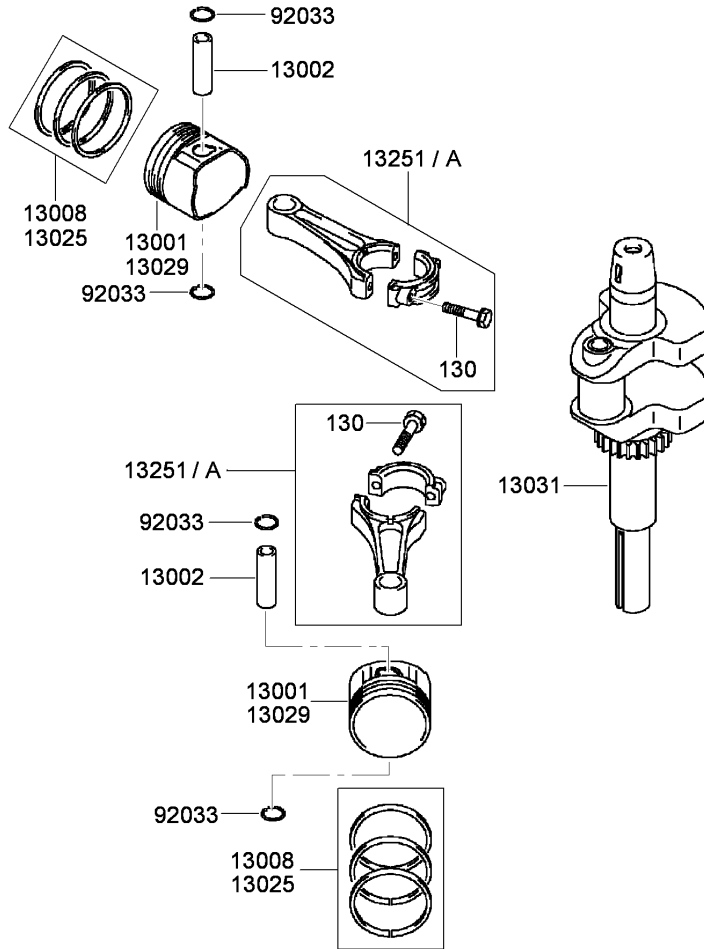
Ref	Part No.	Qty.	Description
1	114-3049	1	Harness-Wire
2	63-8360	1	Key-Ignition
3	29-5560	1	Switch-On / Off
3:1	218-461	1	Nut-HH
3:2	3254-5	1	Washer-Tooth
4	1-323430	1	Module-Interlock
5	32105-23	1	Screw
7	3296-2	1	Nut-Lock, NI
8	3255-8	1	Washer-Lock

--	--	--	--



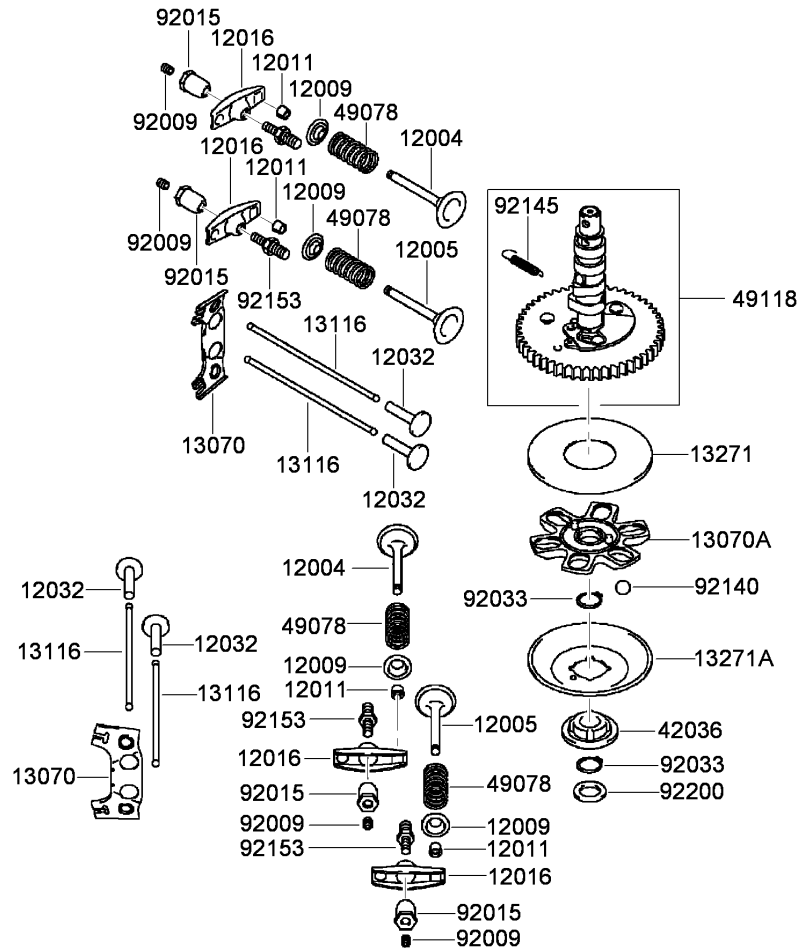
Cylinder and Crankcase Assembly

Ref	Part No.	Qty.	Description
130	100-2805	4	Bolt-Flanged (6X40)
130A	114-8657	2	Bolt-Flanged (8X75)
172	114-8658	4	Bolt-Stud (8X18)
11004	114-8640	2	Gasket-Head
11008	114-8641	1	Head-Cylinder, No 2
11008A	114-8642	1	Head-Cylinder, No 1
11022	114-8643	2	Case-Rocker
11060	114-8644	2	Gasket-Case, Rocker
11061	114-8645	1	Gasket-Breather
11061A	114-8646	1	Gasket-Breather
14091	114-8647	1	Cover
49015	114-8648	1	Cover-Crankcase
49120	114-8649	1	Crankcase
59071	95-9715	1	Joint
92043	108-2510	6	Pin
92049	114-8650	4	Seal-Oil, Rv C2 (6X11X10.2)
92049A	114-8651	1	Seal-Oil, Sd (35X62X8 L HSH)
92049B	114-8652	1	Seal-Oil, S D (35X48X8 R HSH)
92049C	114-8653	1	Seal-Oil, S O (8X14X5 HSH)
92139	114-8654	1	Bushing
92153	114-8655	4	Bolt (6X12)
92153A	114-8656	17	Bolt (8X50)



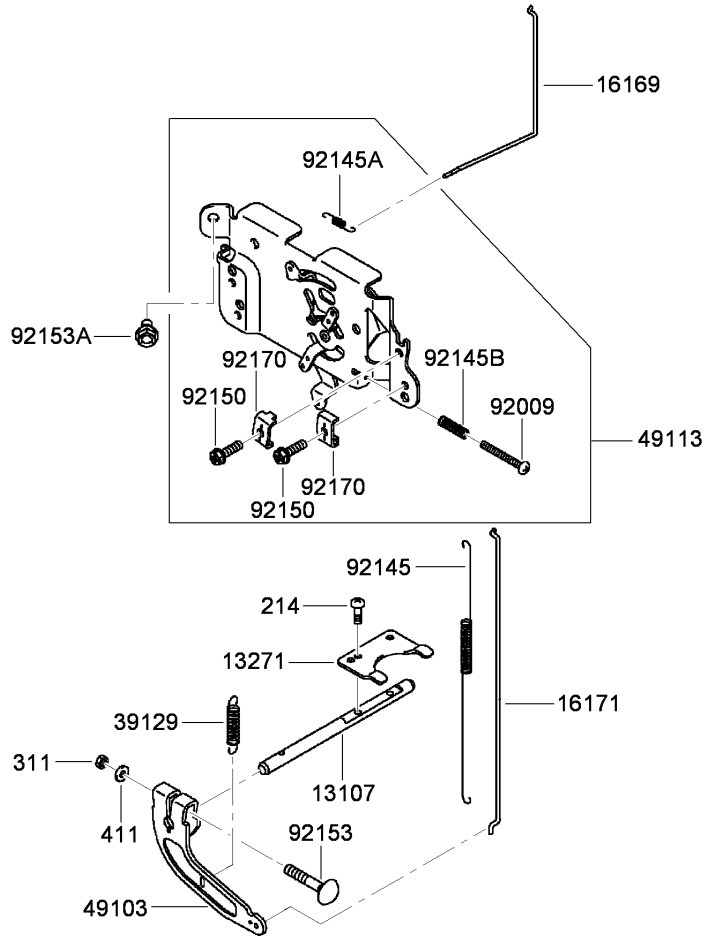
Piston and Crankshaft Assembly

Ref	Part No.	Qty.	Description				
130	108-2522	4	Bolt-Flanged (6X30)				
13001	114-8659	2	Piston-Engine				
13002	108-2517	2	Pin-Piston				
13008	100-2674	2	Set-Ring, Piston				
13025	114-8660	1	Ring Set-Piston (L 0.50)				
13029	114-8661	1	Piston-Engine (L 0.50)				
13031	114-8662	1	Crankshaft				
13251	114-8663	2	Connecting Rod ASM				
13251A	114-8664	2	Connecting Rod ASM (0.50)				
92033	114-8665	4	Ring-Snap				



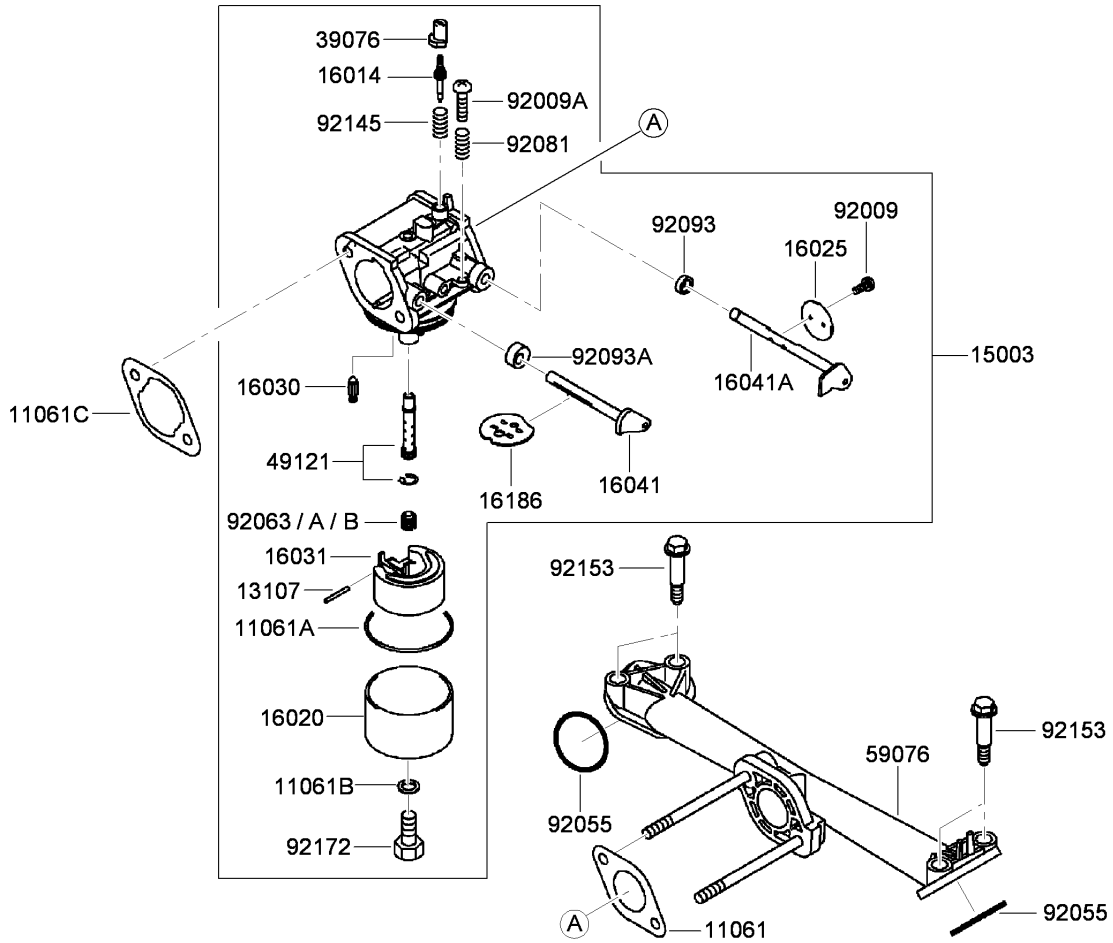
Valve and Camshaft Assembly

Ref	Part No.	Qty.	Description
12004	114-8666	2	Valve-Intake
12005	114-8667	2	Valve-Exhaust
12009	108-2525	4	Retainer-Spring, Valve
12011	95-9744	8	Collet
12016	114-8668	4	Arm-Rocker
12032	108-2527	4	Tappet
13070	114-8669	2	Guide
13070A	114-8670	1	Guide
13116	95-9748	4	Rod-Push
13271	114-8671	1	Plate
13271A	114-8672	1	Plate-Governor
42036	114-8673	1	Sleeve
49078	108-2533	4	Spring-Valve, Engine
49118	114-8674	1	Camshaft
92009	108-2534	4	Screw
92015	93-8534	4	Nut
92033	114-8675	2	Ring-Snap
92140	114-8676	6	Ball
92145	114-8677	1	Spring
92153	108-2537	4	Bolt
92200	114-8678	1	Washer



Control Equipment Assembly

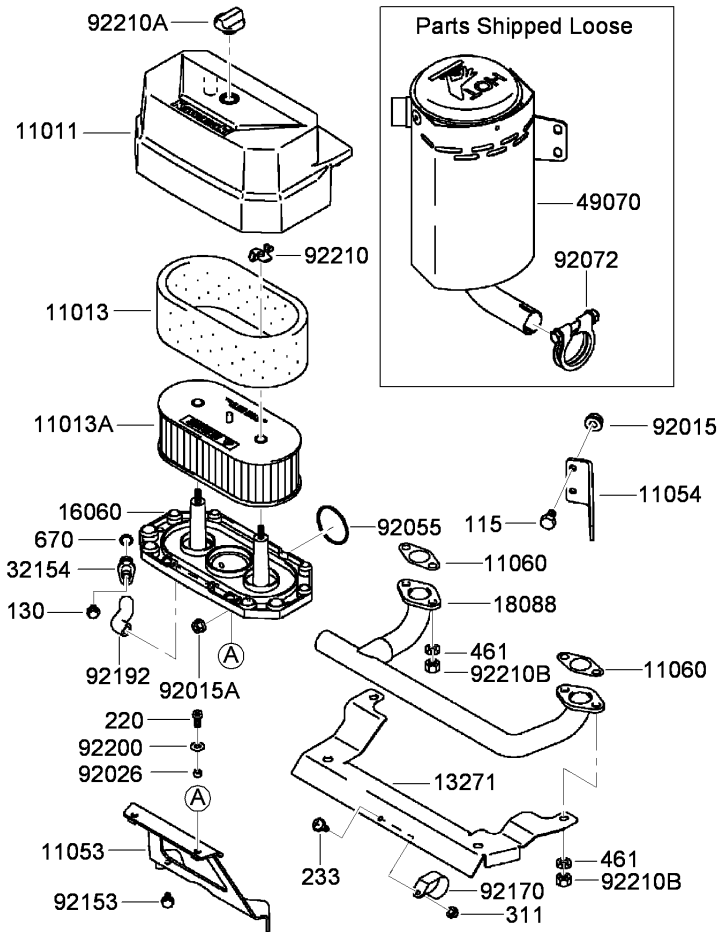
Ref	Part No.	Qty.	Description
214	115-6422	2	Cable-Throttle/Choke
311	114-8698	1	Nut-Hex (6Mm)
411	115-6423	1	Washer-Plain (6Mm)
13107	115-6409	1	Shaft
13271	115-6410	1	Plate
16169	115-6411	1	Link-Choke
16171	115-6412	1	Link
39129	115-6413	1	Spring-Governor
49103	115-6414	1	Arm-Governor
49113	115-6415	1	Panel-Control
92009	115-6416	1	Screw (4X35)
92145	115-6417	1	Spring
92145A	115-6418	1	Spring
92145B	115-6620	1	Spring
92150	95-9853	2	Bolt (5X18)
92153	115-6420	1	Bolt (6X35)
92153A	115-6419	2	Bolt (6X12)
92170	115-6421	2	Cable-Throttle/Choke



Carburetor Assembly

Ref	Part No.	Qty.	Description
11061	115-6424	1	Gasket-Insulator
11061A	115-6425	1	Gasket-Chamber
11061B	108-2580	1	Gasket-Screw
11061C	115-6426	1	Gasket-Cleaner, Air
13107	115-6427	1	Shaft
15003	115-6428	1	Carburetor ASM
16014	115-6429	1	Screw-Pilot, Air
16020	115-6430	1	Chamber-Float
16025	115-6431	1	Valve-Throttle
16030	115-6432	1	Valve-Float
16031	115-6433	1	Float
16041	115-6434	1	Shaft-Choke, Carburetor
16041A	115-6435	1	Shaft-Throttle, Carburetor
16186	115-6436	1	Choke Valve ASM
39076	108-2593	1	Limiter
49121	115-6437	1	Nozzle-Main
59076	115-6438	1	Manifold-Intake
92009	108-2595	2	Screw
92009A	108-2596	1	Screw
92055	115-6439	2	O-Ring (Id 31)
92063	115-6440	1	Jet-Main, No.88
92063A	115-6441	1	Jet-Main, No.85
92063B	115-6442	1	Jet-Main, No.82
92081	108-2598	1	Spring

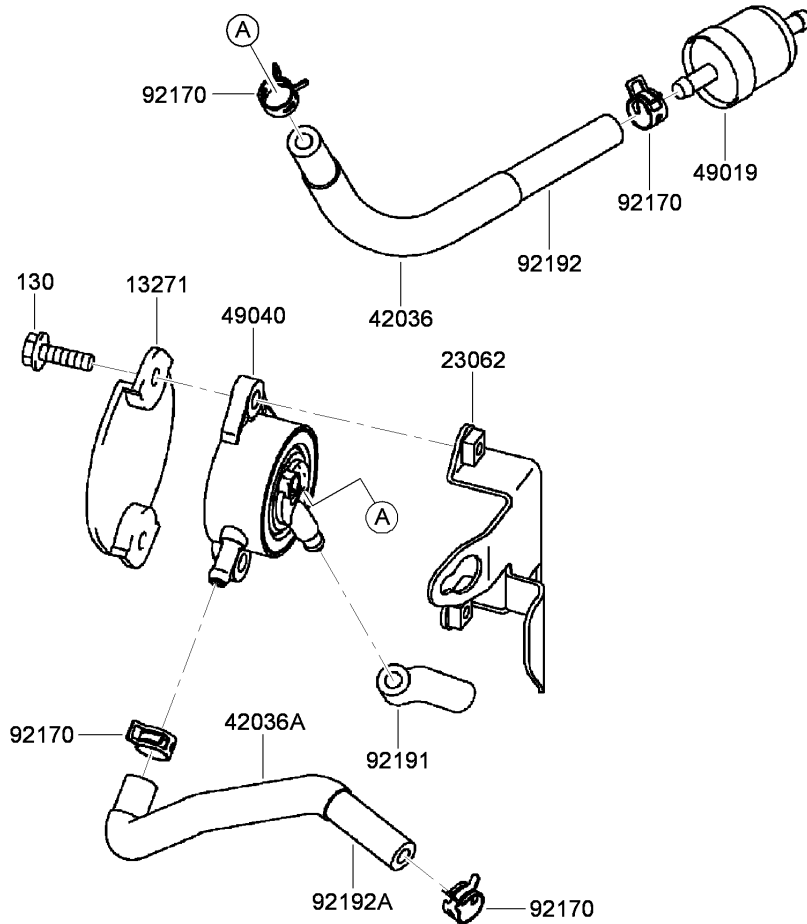
Ref	Part No.	Qty.	Description
92093	108-2599	1	Seal
92093A	115-6443	1	Seal
92145	108-2600	1	Spring
92153	115-6444	4	Bolt
92172	108-2601	1	Screw



Air Filter and Muffler Assembly

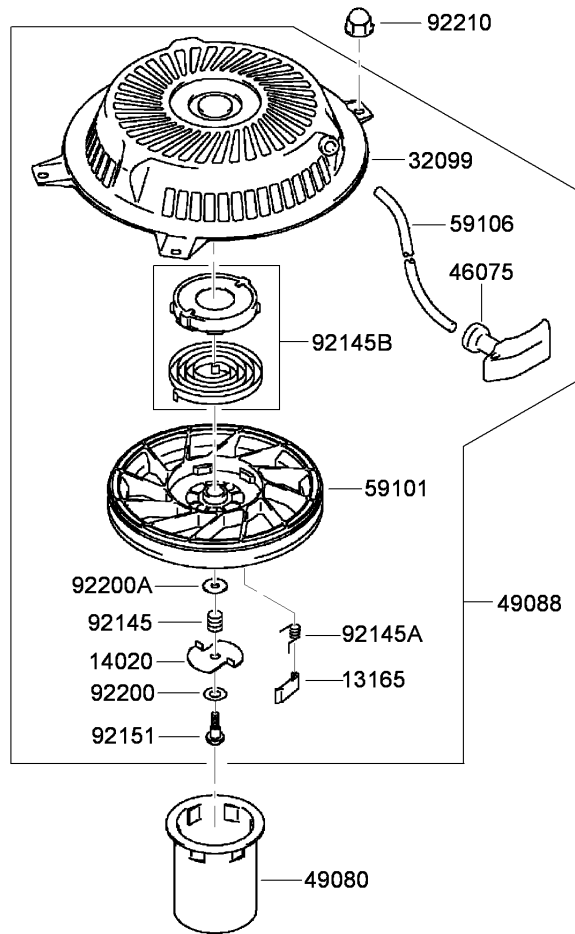
Ref	Part No.	Qty.	Description
115	115-6606	2	Bolt-Upset, Small (8X14)
130	Kw10029	1	Bolt-Flanged
220	115-6493	2	Screw-Pan, Cross (6X14)
233	115-6494	1	Screw-Pan (4X16)
311	115-6495	1	Nut-Hex (4Mm)
461	115-6496	4	Washer-Spring (8Mm)
670	115-6497	1	O-Ring (10Mm)
11011	115-6472	1	Case-Filter, Air
11013	115-6473	1	Element-Filter, Air
11013A	115-6474	1	Element-Filter, Air
11053	115-6475	1	Bracket
11054	115-6476	1	Bracket
11060	115-6477	2	Gasket-Muffler
13271	115-6478	1	Plate
16060	115-6479	1	Pipe-Intake
18088	115-6480	1	Pipe-Exhaust
32154	115-6481	1	Pipe
49070	115-6482	1	Muffler
92015	115-6483	2	Nut
92015A	115-6610	2	Nut
92026	115-6484	2	Spacer (6.2X7.9X5)
92055	115-6485	1	O-Ring
92072	115-6486	1	Band,
92153	115-6487	2	Bolt (6X12)

Ref	Part No.	Qty.	Description
92170	115-6488	1	Clamp
92192	115-6489	1	Tube
92200	95-9854	2	Washer
92210	115-6490	2	Nut
92210A	108-2612	1	Nut
92210B	115-6491	4	Nut (8Mm)



Fuel Tank and Valve Assembly

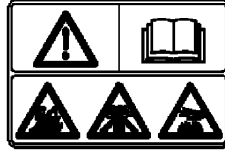
Ref	Part No.	Qty.	Description
130	95-9893	2	Bolt-Flanged (6X20)
13271	115-6498	1	Plate
23062	115-6445	1	Bracket
42036	115-6499	1	Sleeve
42036A	115-6446	1	Sleeve
49019	115-6447	1	Filter-Fuel
49040	115-6448	1	Pump-Fuel
92170	100-2820	4	Clamp
92191	115-6450	1	Tube
92192	115-6451	1	Tube (6.35X12.7X160)
92192A	115-6452	1	Tube (6.35X12.7X180)



Starter Assembly

Ref	Part No.	Qty.	Description				
13165	115-6453	2	Pawl-Starter, Recoil				
14020	115-6455	1	Retainer				
32099	115-6456	1	Case-Starter, Recoil				
46075	115-6457	1	Grip-Starter, Recoil				
49080	115-6458	1	Pulley-Starting				
49088	115-6459	1	Starter-Recoil				
59101	115-6460	1	Reel-Starter, Recoil				
59106	115-6461	1	Rope				
92145	115-6462	1	Spring				
92145A	115-6463	2	Spring				
92145B	115-6464	1	Spring				
92151	115-6465	1	Bolt				
92200	115-6466	1	Washer				
92200A	115-6467	1	Washer				
92210	100-2603	4	Nut				

56070



56080



56080A



Label Set

Ref	Part No.	Qty.	Description
56070	115-6469	1	Label-Warning
56080	115-6470	1	Label-Brand
56080A	115-6471	1	Label-Brand

Attachments and Accessories

For 22970 - TRX-15 Trencher

Product Name	Model/Part
Hourmeter Kit	115-4028
Crumber Kit	22477
24in X 4in Soil Chain	22480
24in X 4in Combination Chain	22481
24in X 4in Rock Tooth Chain	22482
24in X 6in Soil Chain	22483
24in X 6in Combination Chain	22484
24in X 6in Rock Tooth Chain	22485
36in X 4in Soil Chain	22486
36in X 4in Combination Chain	22487
36in X 4in Rock Tooth Chain	22488
36in X 6in Rock Tooth Chain	22489
36in X 6in Soil Chain	22490
36in X 6in Combination Chain	22491
48in x 4in Soil Chain	22492
48in x 4in Combination Chain	22493
48in x 6in Soil Chain	22494
48in x 6in Combination Chain	22495
24in Trencher Boom	22975
36in Trencher Boom	22976
48in Trencher Boom	22977
Backfill Blade	22980

NOTES

NOTES

NOTES

