



TRX-19 Trencher

Model No. 22971 - 290000001 and up.

Parts Catalog

Ordering Replacement Parts

To order replacement parts, please supply the part number, the quantity, and the description of each part desired.

Understanding Reference Numbers

Each identified part in an illustration has a reference number. The reference number for a part also appears in the parts list, along with other information about the part.

This catalog uses two special reference number formats, one to indicate parts in a service assembly and another to indicate the quantity of a given part in an illustration.

Service Assembly Reference Numbers

Parts in service assemblies have reference numbers in the form a:b. The a represents the reference number of the entire service assembly and the b represents a sequential number unique to each part within the service assembly.

For example, a wheel assembly might be identified by reference number 6, the tire by 6:1, the valve by 6:2, and the wheel by 6:3. When you order the assembly identified by reference number 6, you receive all parts identified by reference numbers 6:1, 6:2, and 6:3. However, you may also order any part individually. Reference numbers of this type appear in illustrations and in part lists.

Reference Numbers Indicating Quantity

In an illustration, if a reference number indicates more than one part, the reference number has the form nX y. The n represents the quantity of the part, the X is the multiplication symbol, and the y represents the reference number.

For example, in an illustration, the reference number 2X 37 means that two of the parts identified by reference number 37 are indicated.

Contents

| Description | Page | Description | Page |
|---------------------------------------------------|----------|----------------------------------|----------|
| Frame Assembly | 3 | Hydraulic Routing Assembly | 19 |
| Track and Drive Assembly | 4 | Electrical Assembly | 20 |
| Hydraulic Pump Assembly No. 115-4034 and 115-4035 | 6 | Cylinder and Crankcase Assembly | 21 |
| Hydraulic Motor Assembly No. 104-8470 | 7 | Piston and Crankshaft Assembly | 22 |
| Parking Brake Assembly | 8 | Valve and Camshaft Assembly | 23 |
| Engine Assembly | 9 | Lubrication Equipment Assembly | 24 |
| Control Assembly | 11 | Cooling Equipment Assembly | 25 |
| Trencher Assembly | 12 | Electric Equipment Assembly | 26 |
| Hydraulic Motor Assembly No. 114-3053 | 13 | Control Equipment Assembly | 27 |
| Hydraulic Cylinder Assembly No. 112-2602 | 14 | Carburetor Assembly | 28 |
| Control Tower Assembly | 15 | Air Filter and Muffler Assembly | 29 |
| Hydraulic Control Assembly | 16 | Fuel Tank and Valve Assembly | 30 |
| 2-Spool Valve Assembly No. 115-4062 | 17 | Starter Assembly | 31 |
| Oil Cooler Assembly | 18 | Label Set | 32 |
| | | Attachments and Accessories List | 33 |

Part Description Abbreviations

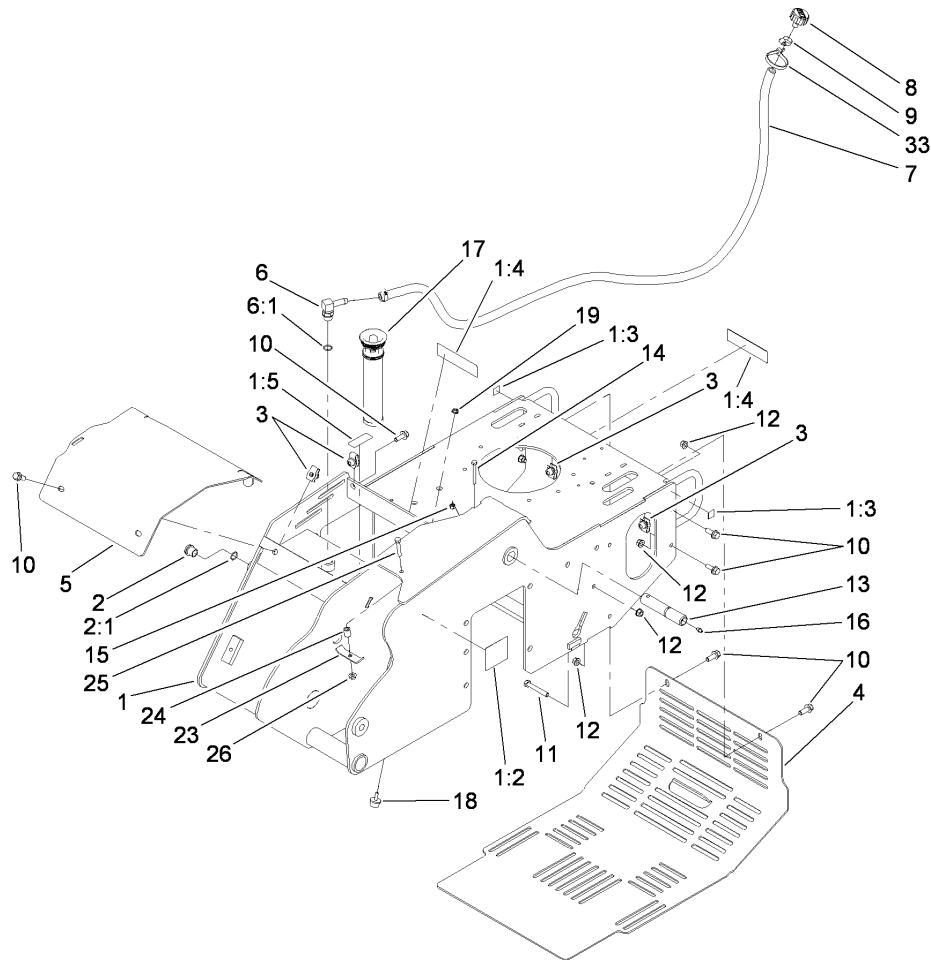
Part descriptions in this catalog may include the following abbreviations.

| | |
|--------------------------------------------|----------------------------------------------|
| AR. as required | HYD. hydraulic |
| ASM. assembly | LH. left hand |
| BBC. blade brake clutch | NI. nylon insert |
| CARR. carriage | NPTF. national pipe thread fine |
| DEG. degrees | PFH. phillips flat head |
| EXT. external | PPH. phillips pan head |
| FH. flat head | PPHTF. phillips pan head thread forming |
| GA. gauge | PRH. phillips round head |
| HD. heavy-duty | PTH. phillips truss head |
| HF. hex flange | PTO. power-take-off |
| HH. hex head | RH. right hand |
| HHF. hex head flange | ROPS. roll-over protection system |
| HHFTF. hex head flange thread forming | SFH. slotted fillister head |
| HJ. hex jam | SHH. slotted hex head |
| HLH. hex lag head | SHWH. slotted hex washer head |
| HOC. height-of-cut | SPH. slotted pan head |
| HSBH. hex socket button head | SQH. square head |
| HSFH. hex socket flat head | SRH. slotted round head |
| HSH. hex socket head | STD. standard |
| HWH. hex washer head | TAP. self tapping |
| HWHTF. hex washer head thread forming | TTH. torx truss head |

Footnotes

❶ Not illustrated

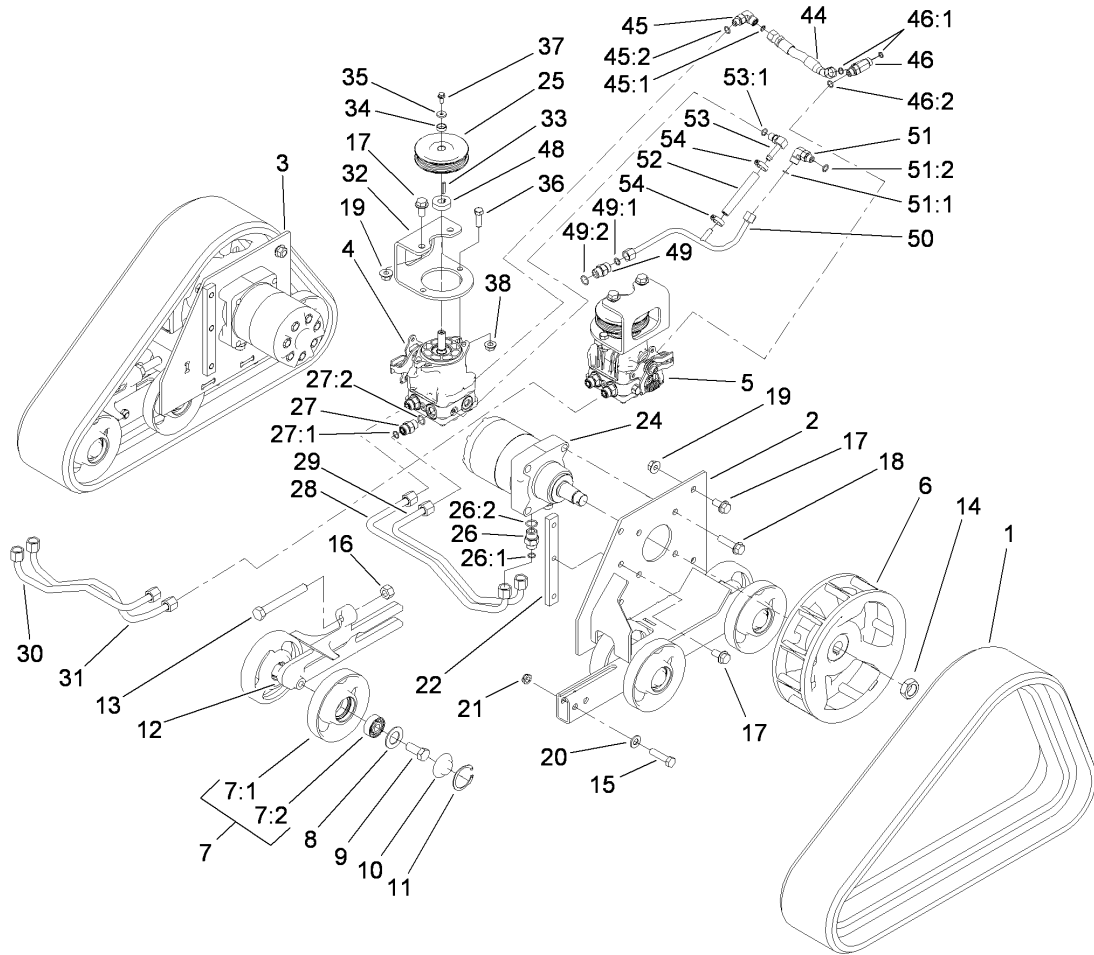
❷ Not serviced separately



Frame Assembly

| Ref | Part No. | Qty. | Description |
|-----|-------------|------|---------------------|
| 1 | 114-8630 | 1 | Main Frame ASM |
| 1:2 | 100-4650 | 1 | Decal-Warning |
| 1:3 | 93-9084 | 2 | Decal-Point, Lift |
| 1:4 | 93-7814 | 2 | Decal-Danger |
| 1:5 | 93-6686 | 1 | Decal-Oil, HYD |
| 2 | 114-3075 | 1 | Glass-Sight |
| 2:1 | 237-79 | 1 | O-Ring |
| 3 | 112-4576 | 5 | Nut-Tinnerman |
| 4 | 115-6503-01 | 1 | Cover-Rear |
| 5 | 115-6624-03 | 1 | Plate-Cover, Front |
| 6 | 354-120 | 1 | Fitting-HYD, 90 DEG |
| 6:1 | 237-79 | 1 | O-Ring |
| 7 | 114-3042 | 1 | Hose-Breather |
| 8 | 68-6150 | 1 | Breather |
| 9 | 2412-36 | 2 | Clamp-Hose |
| 10 | 3234-11 | 5 | Screw-HHF |
| 11 | 323-12 | 1 | Screw-HH |
| 12 | 32128-40 | 2 | Nut-Flange |
| 13 | 114-2937 | 1 | Pin-Pivot |
| 14 | 321-18 | 1 | Screw-HH |
| 15 | 3296-42 | 1 | Nut-Lock, NI |
| 16 | 302-5 | 1 | Fitting-Grease |
| 17 | 114-3039 | 1 | In-Tank Filter ASM |
| 18 | 1-523420 | 1 | Bumper |

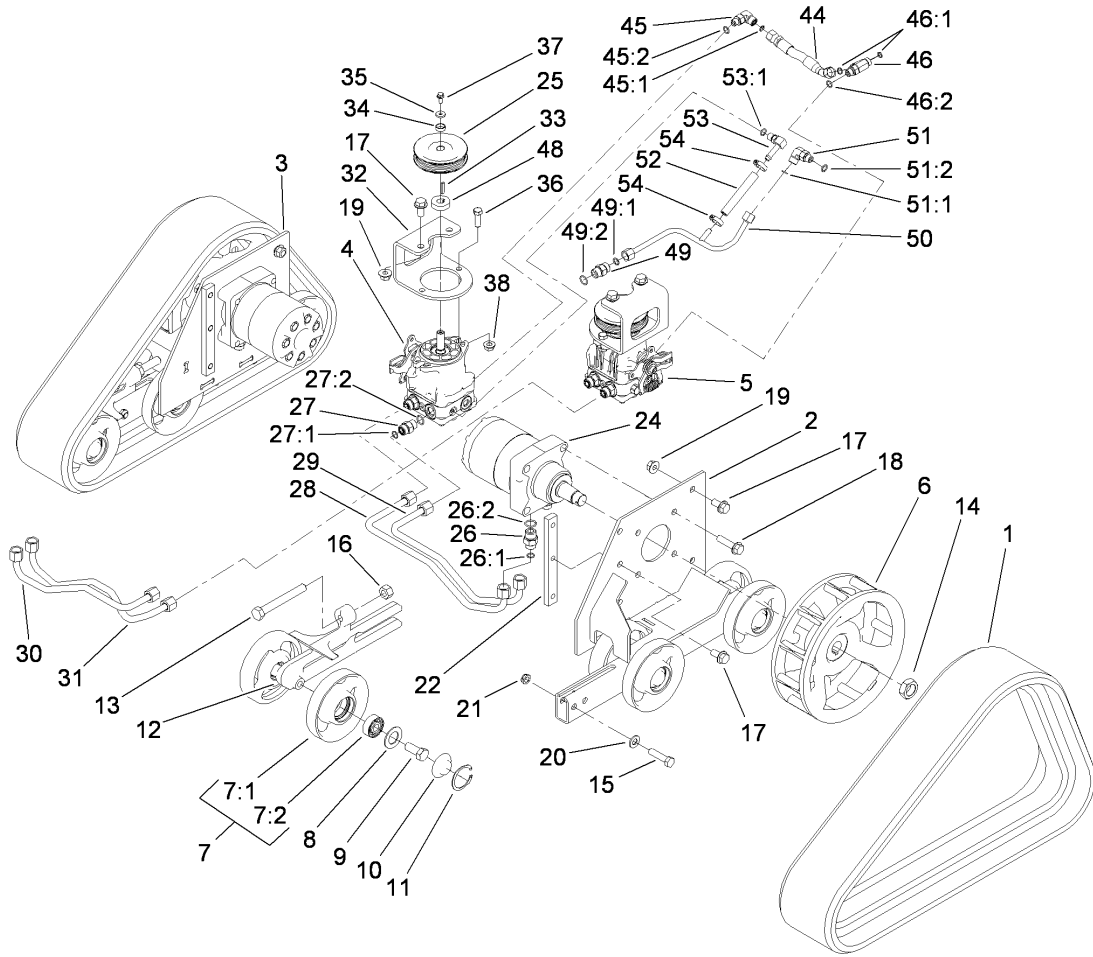
| Ref | Part No. | Qty. | Description |
|-----|----------|------|---------------|
| 19 | 32128-33 | 1 | Nut-HF |
| 23 | 100-4860 | 1 | Bracket-Clamp |
| 24 | 93-5023 | 1 | Spacer |
| 25 | 322-10 | 1 | Screw-HH |
| 26 | 32128-20 | 1 | Nut-HF |
| 33 | 3334-945 | 1 | Tie-Cable |



Track and Drive Assembly

| Ref | Part No. | Qty. | Description |
|-----|-------------|------|---------------------|
| 1 | 112-4816 | 2 | Track-Rubber |
| 2 | 114-2992-03 | 1 | LH Track Frame ASM |
| 3 | 114-2993-03 | 1 | RH Track Frame ASM |
| 4 | 115-4034 | 1 | Pump-HYD, RH |
| 5 | 115-4035 | 1 | Pump-HYD, LH |
| 6 | 115-3882-03 | 2 | Wheel-Drive |
| 7 | 112-4817 | 12 | Wheel-Tensioner |
| 7:1 | 114-3014-03 | 1 | Wheel-Track |
| 7:2 | 93-4237 | 1 | Bearing |
| 8 | 106-7585 | 12 | Gasket-Bogie |
| 9 | 327-4 | 12 | Screw-HH |
| 10 | 106-7557 | 12 | Cap-Wheel, Bearing |
| 11 | 106-7595 | 12 | Ring-Snap, Internal |
| 12 | 114-3077-03 | 2 | Tensioner-Track |
| 13 | 112-4874 | 2 | Screw-HH, TAP |
| 14 | 106-8159 | 2 | Nut-Lock |
| 15 | 325-8 | 4 | Screw-HH |
| 16 | 3217-11 | 2 | Nut-Hex |
| 17 | 3234-6 | 14 | Screw-HHF |
| 18 | 3234-27 | 8 | Screw-Flange |
| 19 | 32128-49 | 8 | Nut-HHF |
| 20 | 3256-26 | 4 | Washer-Flat |
| 21 | 3296-45 | 4 | Nut-Lock, NI |
| 22 | 114-3091 | 2 | Bar-Thread |

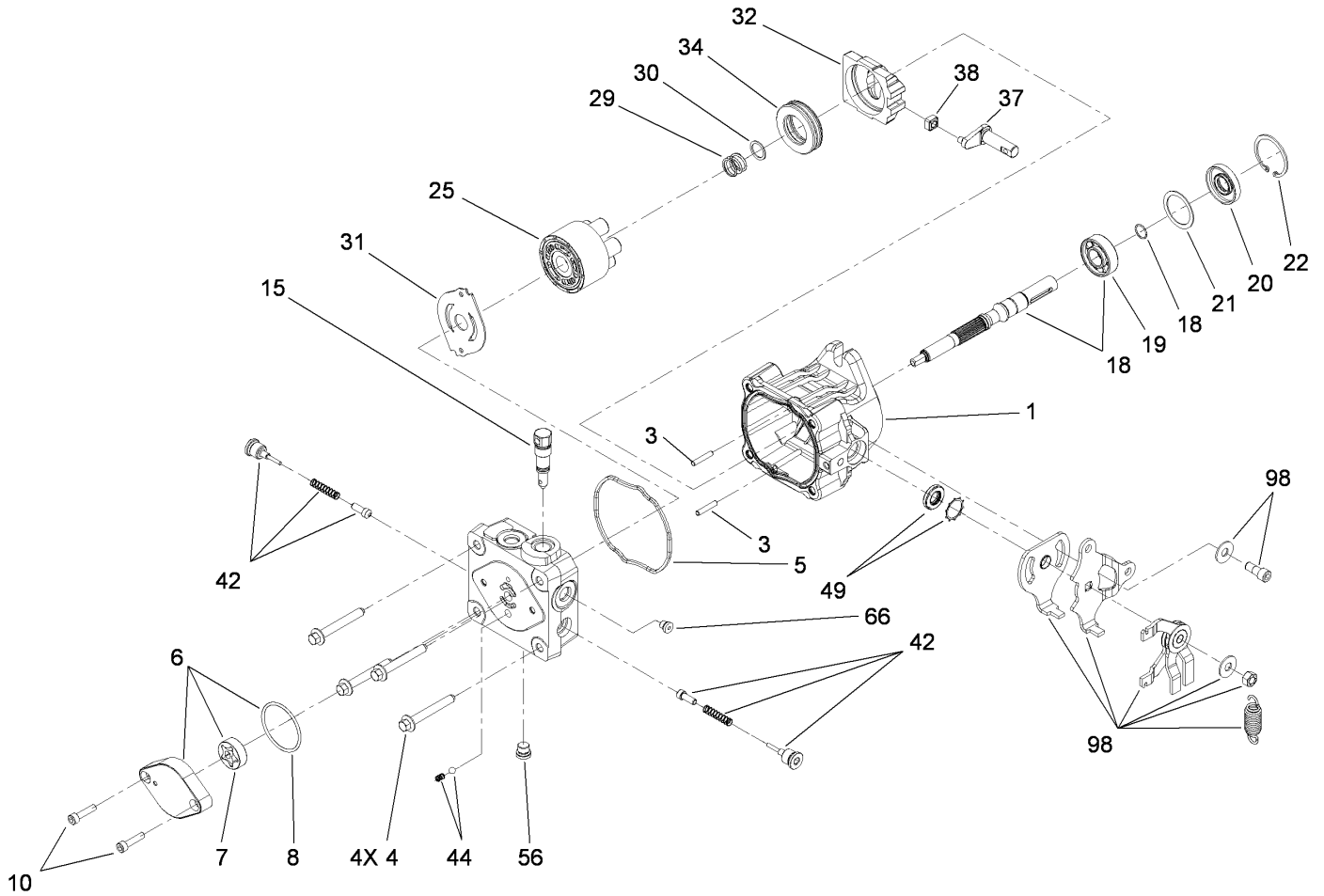
| Ref | Part No. | Qty. | Description |
|------|-------------|------|-----------------------|
| 24 | 104-8470 | 2 | Motor-Wheel, HYD |
| 25 | 115-1298 | 2 | Sheave-5K |
| 26 | 340-6 | 4 | Fitting-HYD, Straight |
| 26:1 | 237-30 | 1 | O-Ring |
| 26:2 | 237-80 | 1 | O-Ring |
| 27 | 340-4 | 4 | Fitting-HYD, Straight |
| 27:1 | 237-30 | 1 | O-Ring |
| 27:2 | 237-79 | 1 | O-Ring |
| 28 | 115-1285 | 1 | HYD Tube ASM |
| 29 | 115-1286 | 1 | HYD Tube ASM |
| 30 | 115-1287 | 1 | HYD Tube ASM |
| 31 | 115-1288 | 1 | HYD Tube ASM |
| 32 | 115-1289-01 | 2 | Bracket-Mount, Pump |
| 33 | 80-6090 | 2 | Key-Pump |
| 34 | 108-4211 | 2 | Bushing |
| 35 | 73-3580 | 2 | Washer |
| 36 | 324-5 | 4 | Screw-HH |
| 37 | 33103-016 | 2 | Screw-HHF |
| 38 | 32128-42 | 4 | Nut-HF |
| 44 | 115-1297 | 1 | HYD Hose ASM |
| 45 | 340-77 | 1 | Fitting-HYD, 90 DEG |
| 45:1 | 237-22 | 1 | O-Ring |
| 45:2 | 237-42 | 1 | O-Ring |
| 46 | 340-86 | 1 | Fitting-Tee |



Track and Drive Assembly (continued)

| Ref | Part No. | Qty. | Description |
|------|----------|------|---------------------|
| 46:1 | 237-22 | 2 | O-Ring |
| 46:2 | 237-42 | 1 | O-Ring |
| 48 | 115-4002 | 2 | Spacer |
| 49 | 340-3 | 1 | Adapter |
| 49:1 | 237-22 | 1 | O-Ring |
| 49:2 | 237-79 | 1 | O-Ring |
| 50 | 117-1305 | 1 | HYD Tube ASM |
| 51 | 340-77 | 1 | Fitting-HYD, 90 DEG |
| 51:1 | 237-22 | 1 | O-Ring |
| 51:2 | 237-42 | 1 | O-Ring |
| 52 | 115-4083 | 1 | Hose |
| 53 | 100-4887 | 1 | Fitting-Barb |
| 53:1 | 237-42 | 1 | O-Ring |
| 54 | 103-1988 | 2 | Clamp-Hose |

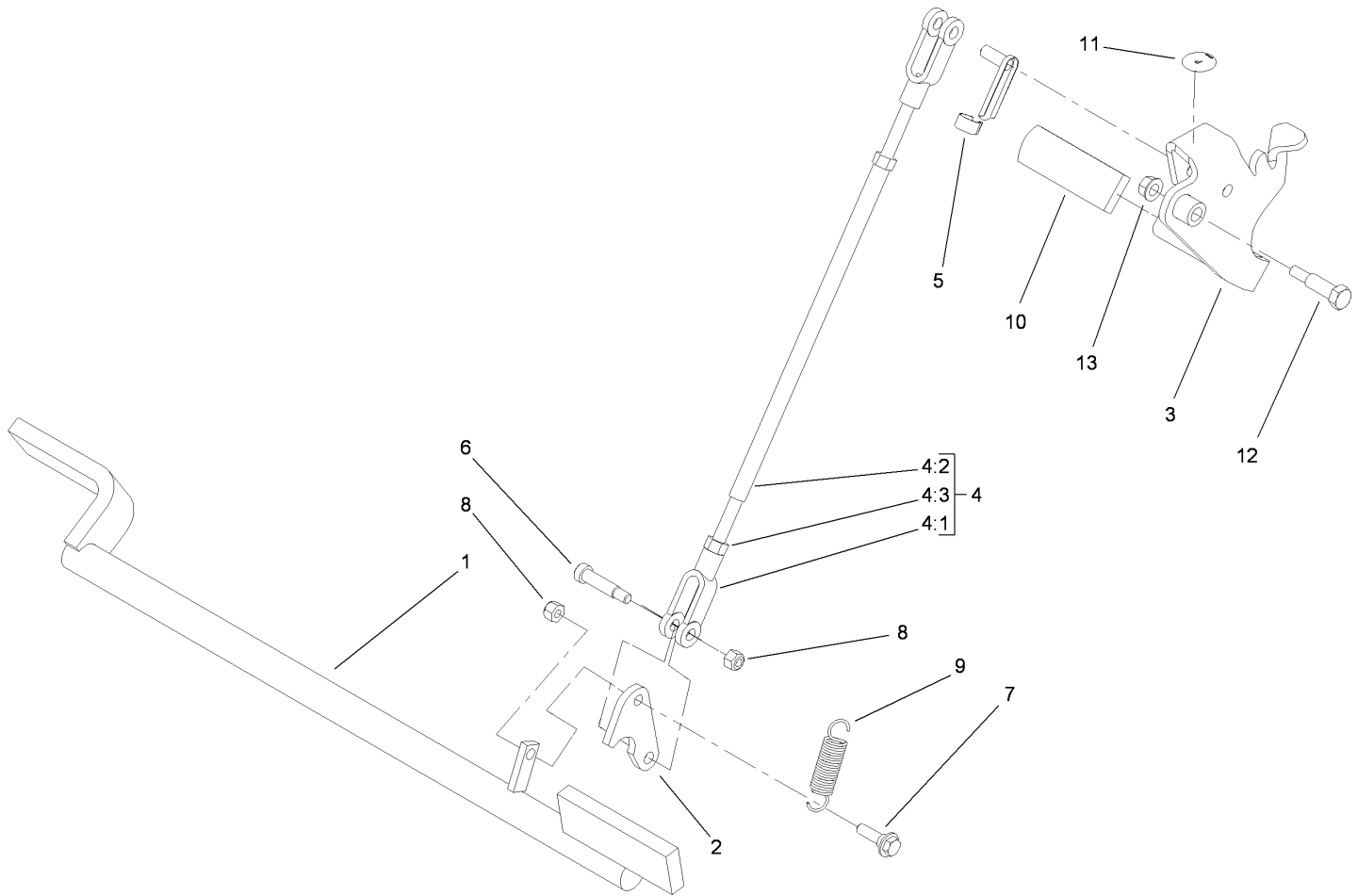
| | | | |
|--|--|--|--|
| | | | |
| | | | |
| | | | |
| | | | |
| | | | |



Hydraulic Pump Assembly No. 115-4034 and 115-4035

| Ref | Part No. | Qty. | Description |
|-----|----------|------|------------------------------|
| 1 | 115-4464 | 1 | Housing Kit |
| 3 | 106-8753 | 2 | Pin-Headless, Straight |
| 4 | 106-8754 | 4 | Bolt-HF |
| 5 | 106-8755 | 1 | O-Ring |
| 6 | 106-8756 | 1 | Charge Pump Kit |
| 7 | 104-2122 | 1 | Gerotor ASM |
| 8 | 106-8757 | 1 | O-Ring |
| 10 | 104-2111 | 2 | Capscrew |
| 15 | 106-8759 | 1 | Bypass Valve Kit |
| 18 | 103-2664 | 1 | Input Shaft Kit |
| 19 | 104-5311 | 1 | Bearing-Ball |
| 20 | 104-5310 | 1 | Seal-Lip |
| 21 | 104-5308 | 1 | Spacer |
| 22 | 104-5309 | 1 | Ring-Retaining |
| 25 | 103-2666 | 1 | Cylinder Block Kit |
| 29 | 94-1936 | 1 | Spring-Block |
| 30 | 94-1937 | 1 | Washer-Thrust, Block |
| 31 | 105-6185 | 1 | Plate-Valve |
| 32 | 94-1907 | 1 | Swashplate-Variable |
| 34 | 94-6922 | 1 | Bearing-Thrust |
| 37 | 115-4458 | 1 | Arm-Trunnion, Tapered Square |
| 38 | 94-1910 | 1 | Guide-Slot |
| 42 | 98-3252 | 2 | Valve-Check (W/Poppet) |
| 44 | 106-8760 | 1 | Charge Relief Valve Kit |

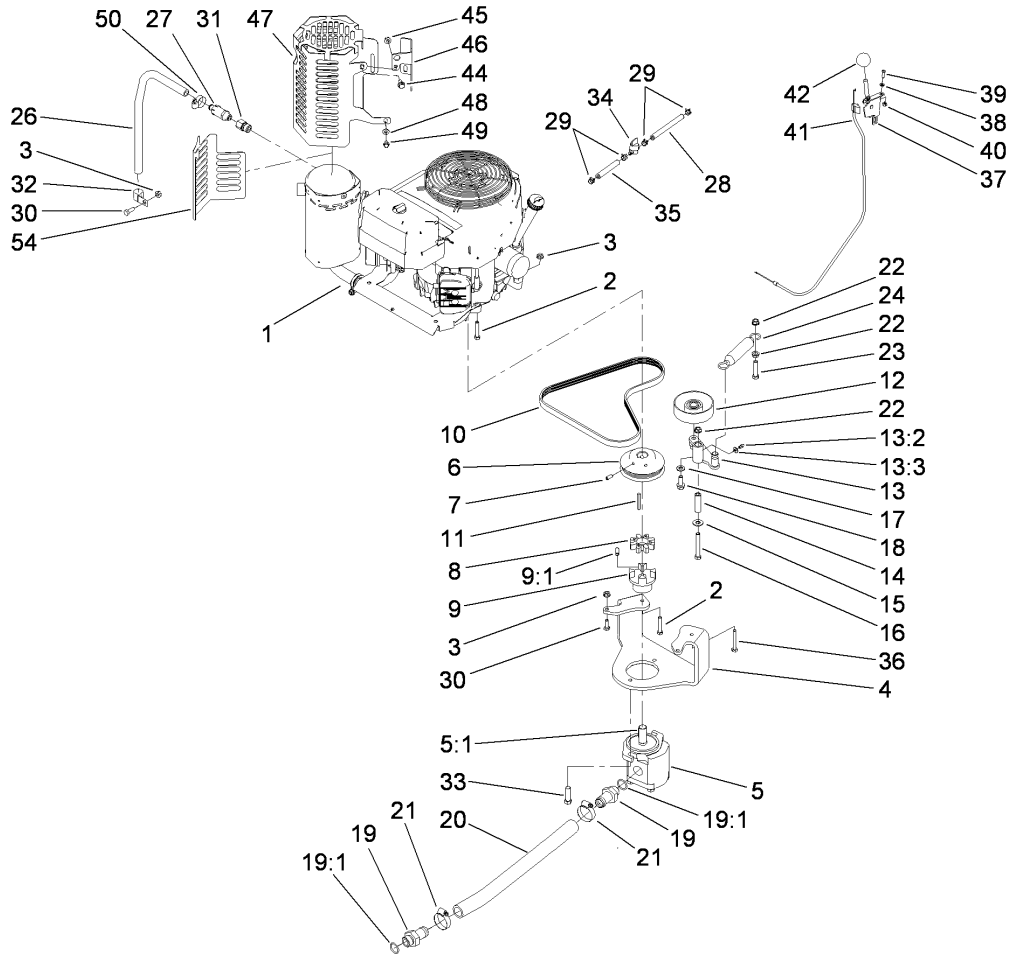
| Ref | Part No. | Qty. | Description |
|-----|----------|------|-------------------|
| 49 | 114-8155 | 1 | Trunnion Seal Kit |
| 56 | 106-8762 | 1 | Plug-HSH |
| 66 | 106-8763 | 1 | Plug-HSH |
| 98 | 115-4046 | 1 | Rtn Kit |
| 99 | 105-6184 | 1 | Seal Overhaul Kit |



Parking Brake Assembly

| Ref | Part No. | Qty. | Description |
|-----|-------------|------|-----------------------|
| 1 | 114-2972-03 | 1 | Brake Bar ASM |
| 2 | 114-2975 | 1 | Link-Mounting |
| 3 | 114-2957-03 | 1 | Brake Handle ASM |
| 4 | 103-4335 | 1 | Brake Rod ASM |
| 4:1 | 1-633131 | 2 | Yoke-Linkage, Brake |
| 4:2 | 103-3907 | 1 | Linkage-Handle, Brake |
| 4:3 | 3219-3 | 2 | Nut-Hex |
| 5 | 103-2399 | 1 | Pin-Spring, Clevis |
| 6 | 114-8629 | 1 | Bolt-Shoulder |
| 7 | 27-7211 | 1 | Screw-Shoulder |
| 8 | 3296-47 | 2 | Nut-Lock, NI |
| 9 | 67-1450 | 1 | Spring-Idler |
| 10 | 62-9130 | 1 | Grip-Handle |
| 11 | 107-8495 | 1 | Decal-Parking Brake |
| 12 | 7-0030 | 1 | Screw-Shoulder, HH |
| 13 | 32128-20 | 1 | Nut-HF |

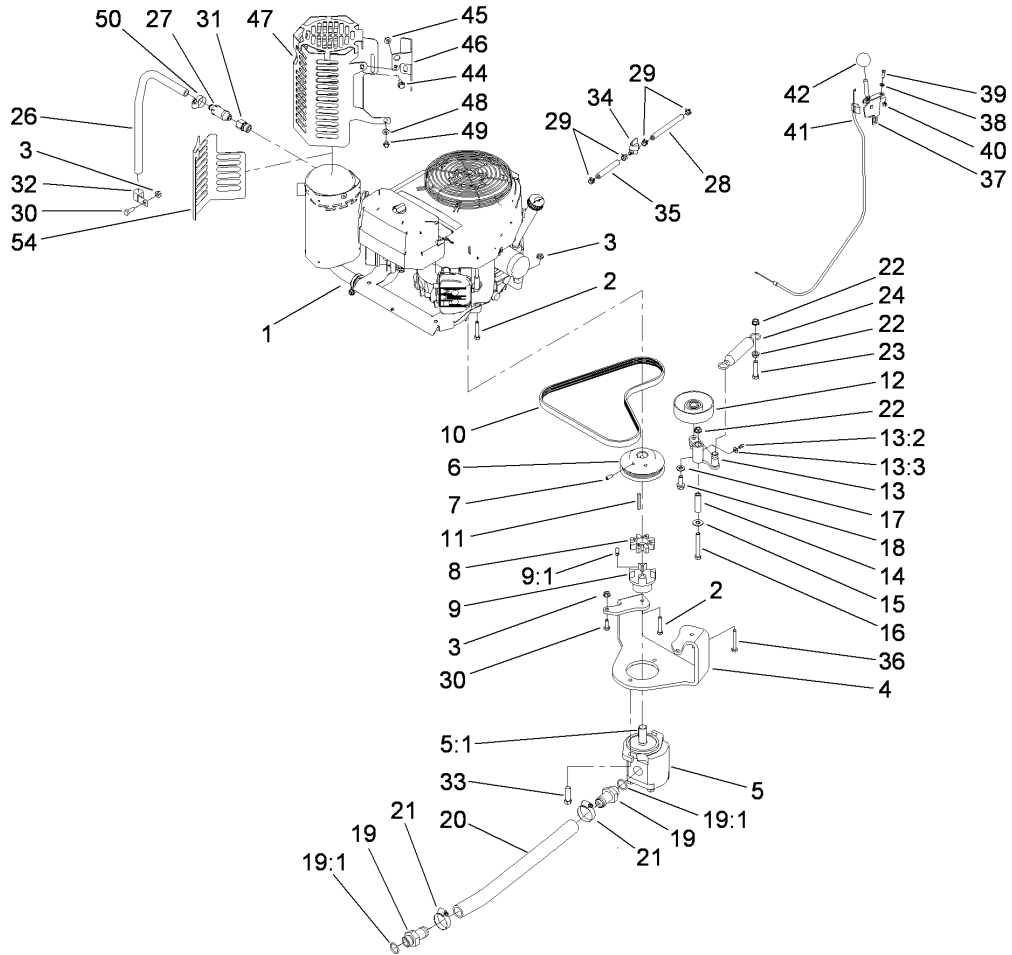
| | | | |
|--|--|--|--|
| | | | |
|--|--|--|--|



Engine Assembly

| Ref | Part No. | Qty. | Description |
|------|-------------|------|----------------|
| 1 | 114-3071 | 1 | Engine ASM |
| 2 | 322-9 | 3 | Screw-HH |
| 3 | 32128-20 | 7 | Nut-HF |
| 4 | 114-2912-01 | 1 | Mount-Pump |
| 5 | 114-3072 | 1 | Gear Pump ASM |
| 5:1 | 104-5839 | 1 | Key-Square |
| 5:2 | 115-1265 | 1 | Seal Kit |
| 6 | 114-8559-03 | 1 | Pulley-Engine |
| 7 | 3246-6 | 2 | Screw-Set, HSH |
| 8 | 93-8827 | 1 | Spider-Coupler |
| 9 | 114-2933 | 1 | Coupler-Flex |
| 9:1 | 100-7594 | 1 | Screw-Set |
| 10 | 114-2991 | 1 | Belt-V |
| 11 | 608006 | 1 | Key-Square |
| 12 | 95-8802 | 1 | Pulley-Idler |
| 13 | 114-2915 | 1 | Idler Arm ASM |
| 13:2 | 302-5 | 1 | Fitting-Grease |
| 13:3 | 3256-22 | 1 | Washer-Flat |
| 14 | 114-2916 | 1 | Bushing-Idler |
| 15 | 3256-4 | 1 | Washer-Flat |
| 16 | 323-13 | 1 | Screw-HH |
| 17 | 3256-24 | 1 | Washer-Flat |
| 18 | 3234-11 | 1 | Screw-HHF |
| 19 | 99-3017 | 2 | Fitting |

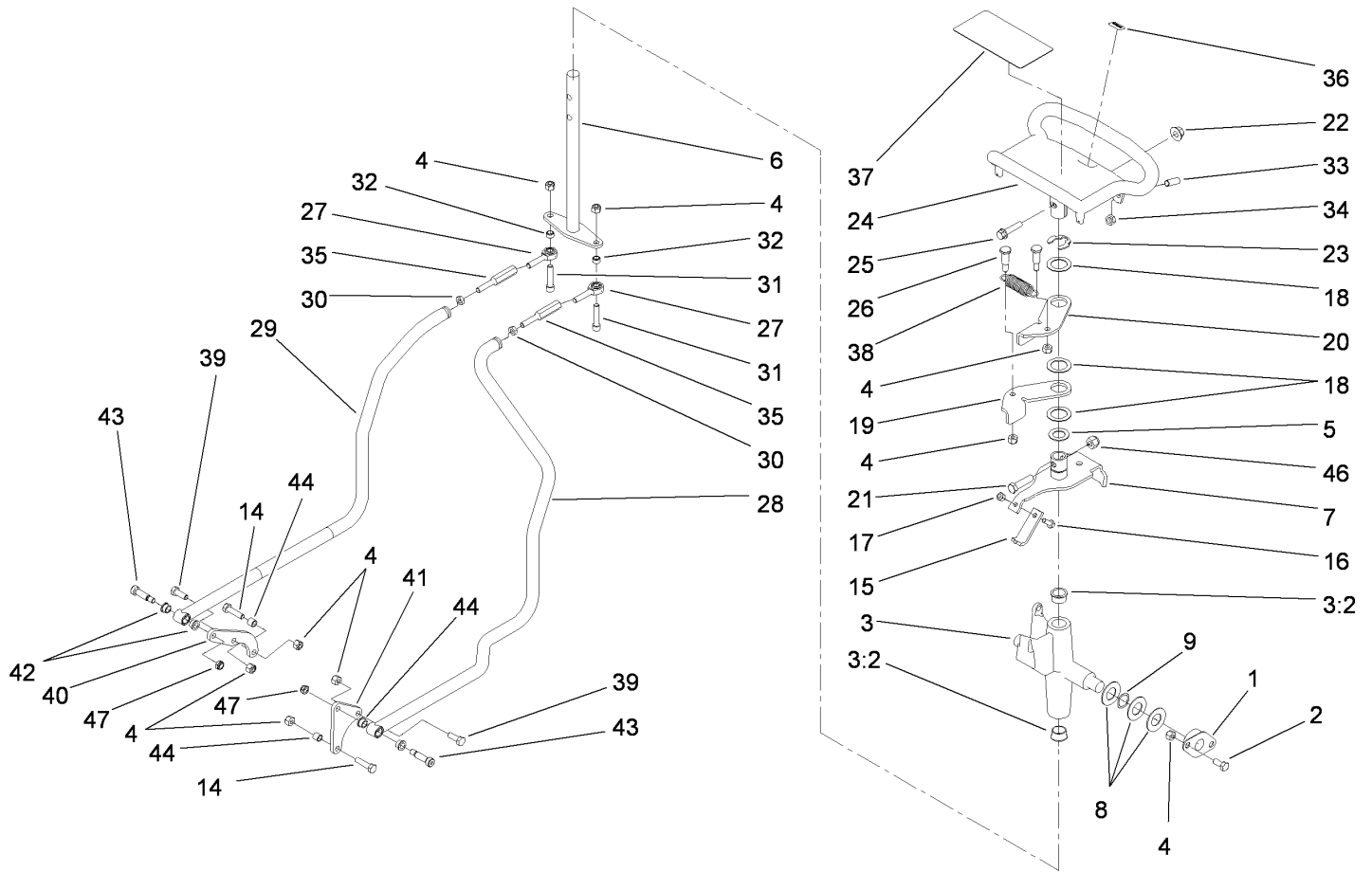
| Ref | Part No. | Qty. | Description |
|------|----------|------|-------------------|
| 19:1 | 237-81 | 1 | O-Ring |
| 20 | 114-2917 | 1 | Hose-Suction |
| 21 | 2412-111 | 2 | Clamp |
| 22 | 3290-357 | 3 | Nut-HHF, Whiz |
| 23 | 323-9 | 1 | Screw-HH |
| 24 | 66-4270 | 1 | Spring-Extension |
| 26 | 106-5709 | 1 | Hose |
| 27 | 92-6877 | 1 | Valve-Drain, Oil |
| 28 | 109-0306 | 1 | Hose-Fuel |
| 29 | 2412-98 | 4 | Clamp |
| 30 | 322-4 | 3 | Screw-HH |
| 31 | 103-1966 | 1 | Adapter |
| 32 | 2412-81 | 1 | Clamp-R |
| 33 | 324-6 | 2 | Screw-HH |
| 34 | 1-603770 | 1 | Valve-Fuel |
| 35 | 109-0295 | 1 | Hose-Fuel |
| 36 | 322-11 | 1 | Screw-HH |
| 37 | 108-9730 | 2 | Control Lever ASM |
| 38 | 3256-21 | 4 | Washer-Flat |
| 39 | 3290-134 | 4 | Screw |
| 40 | 3296-2 | 4 | Nut-Lock, NI |
| 41 | 115-1211 | 2 | Cable-Control |
| 42 | 233-42 | 2 | Knob |
| 44 | 3234-14 | 3 | Screw-HHF |



Engine Assembly (continued)

| Ref | Part No. | Qty. | Description |
|-----|-------------|------|------------------------|
| 45 | 32128-20 | 3 | Nut-HF |
| 46 | 115-6633-03 | 1 | Bracket-Guard, Muffler |
| 47 | 114-8748-03 | 1 | Muffler Shield ASM |
| 48 | 3256-22 | 1 | Washer-Flat |
| 49 | 33103-016 | 1 | Screw-HHF |
| 50 | 2412-36 | 1 | Clamp-Hose |
| 54 | 114-8746 | 1 | Guard-Foil |

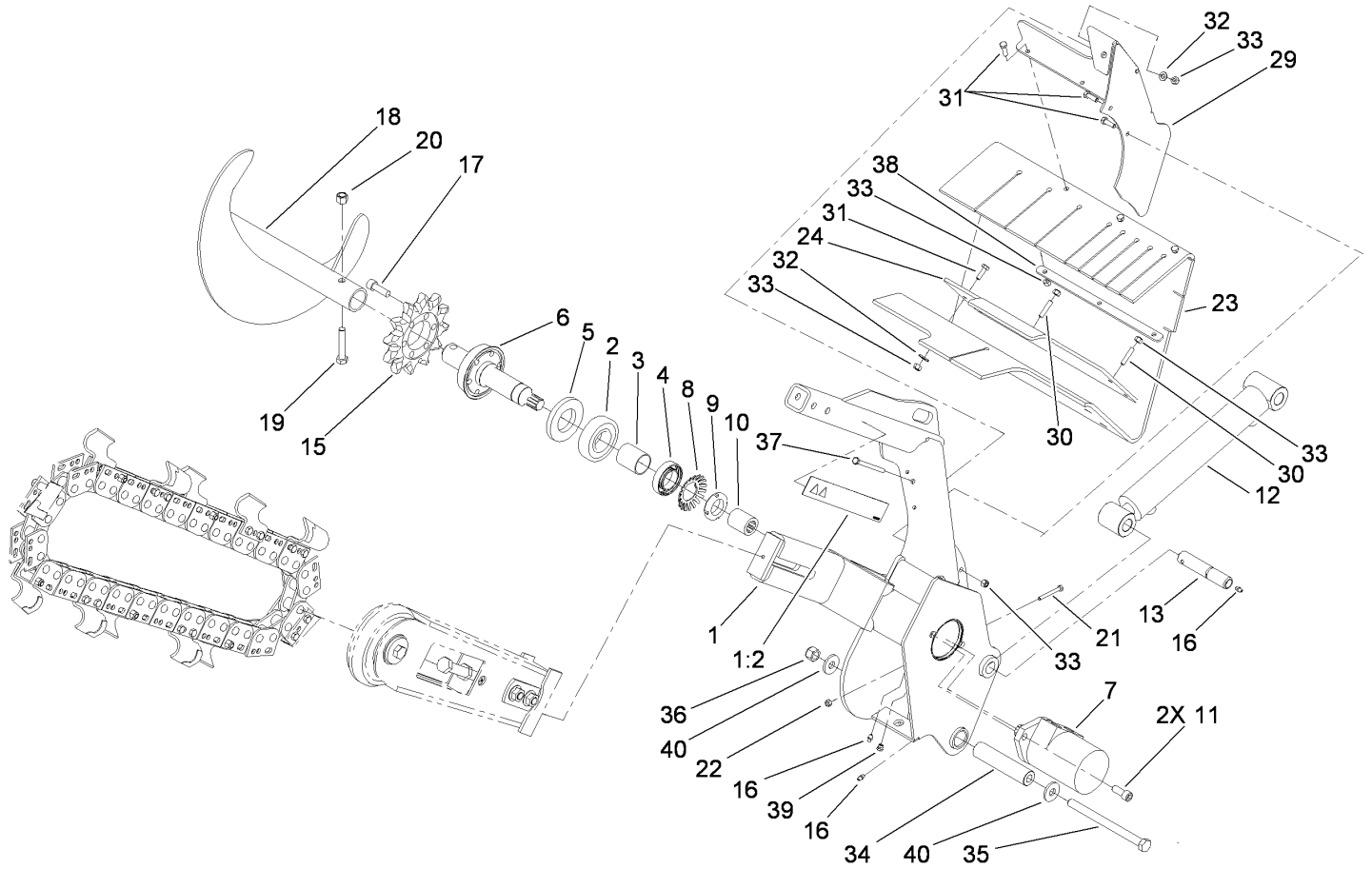
| | | | |
|--|--|--|--|
| | | | |
|--|--|--|--|



Control Assembly

| Ref | Part No. | Qty. | Description |
|-----|-------------|------|---------------------|
| 1 | 68-2970 | 2 | Bushing |
| 2 | 322-3 | 4 | Screw-HH |
| 3 | 106-5737 | 1 | Control Support ASM |
| 3:2 | 256-252 | 2 | Bearing-Flange |
| 4 | 3296-29 | 12 | Nut-Lock, NI |
| 5 | 257-8 | 1 | Washer-Thrust |
| 6 | 106-5745 | 1 | Drive Rod ASM |
| 7 | 112-2783 | 1 | Pivot Lever ASM |
| 8 | 3256-39 | 6 | Washer-Flat |
| 9 | 95-3703 | 2 | Washer-Spring, Wave |
| 14 | 322-6 | 2 | Screw-HH |
| 15 | 115-1204 | 1 | Plate-Neutral |
| 16 | 321-4 | 1 | Screw-HH |
| 17 | 3296-42 | 1 | Nut-Lock, NI |
| 18 | 108-9743 | 3 | Washer-Plain |
| 19 | 98-8407 | 1 | Lever-Return, RH |
| 20 | 98-8408 | 1 | Lever-Return, LH |
| 21 | 323-8 | 1 | Screw-HH |
| 22 | 32128-43 | 1 | Nut-Flange |
| 23 | 32151-91 | 1 | Ring-Retaining |
| 24 | 106-7614-03 | 1 | Handle-Control |
| 25 | 3234-18 | 1 | Screw-HHF |
| 26 | 63-2650 | 2 | Screw-Shoulder |
| 27 | 2411-53 | 2 | Bearing-Rod End, LH |

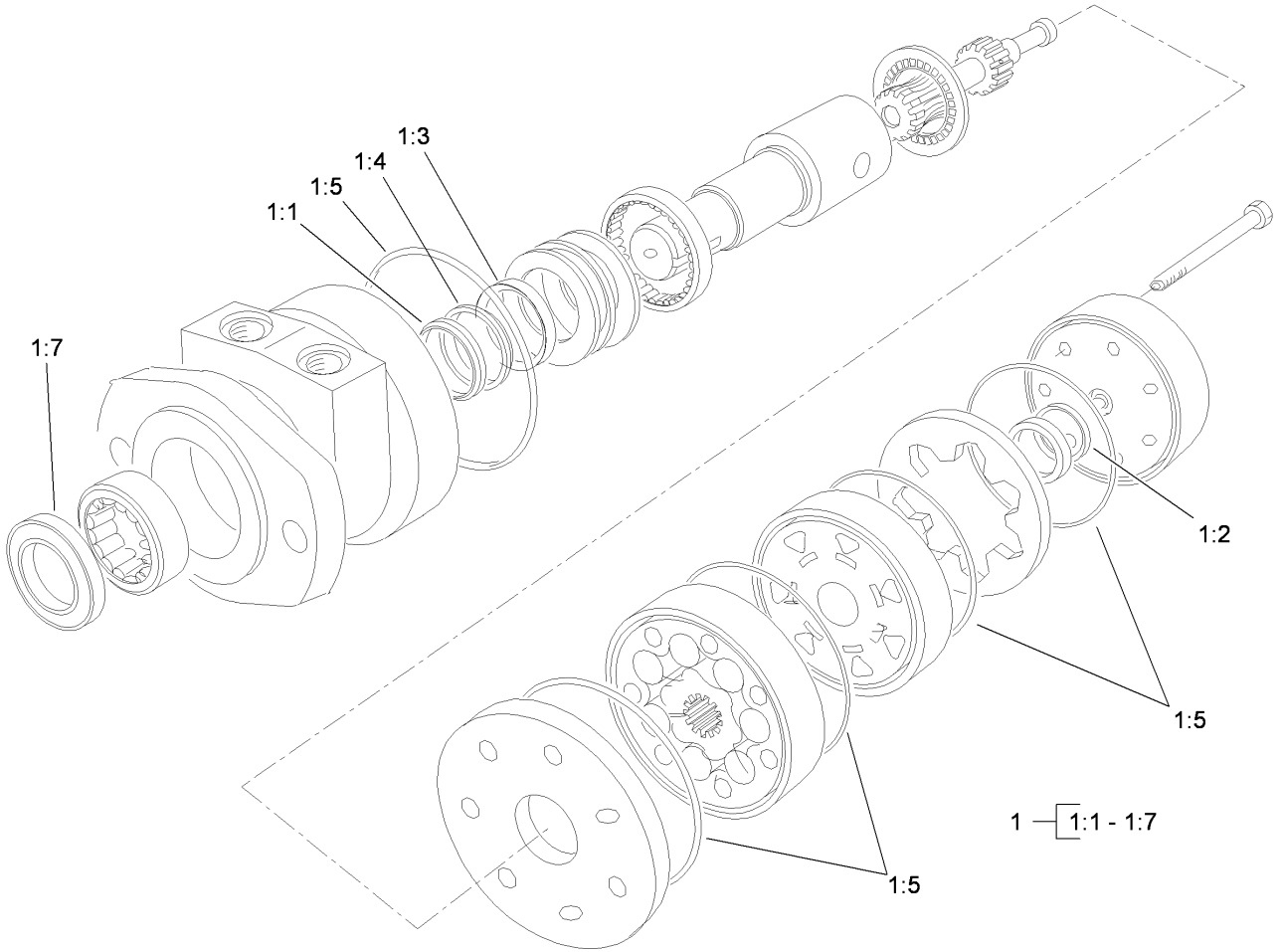
| Ref | Part No. | Qty. | Description |
|-----|----------|------|----------------------------|
| 28 | 114-2901 | 1 | LH Control Rod ASM |
| 29 | 114-2902 | 1 | RH Control Rod ASM |
| 30 | 3220-2 | 2 | Nut-Jam |
| 31 | 3274-83 | 2 | Screw-HSH |
| 32 | 92-3133 | 2 | Spacer-Lever, Traction |
| 33 | 3247-6 | 2 | Screw-Set |
| 34 | 3218-3 | 2 | Nut-Jam |
| 35 | 114-3095 | 2 | Link-Control |
| 36 | 98-1459 | 1 | Decal |
| 37 | 115-4020 | 1 | Decal-Traction |
| 38 | 108-4724 | 1 | Spring-Extension |
| 39 | 322-4 | 2 | Screw-HH |
| 40 | 115-1290 | 1 | Plate-Adapter, Control, RH |
| 41 | 115-1291 | 1 | Plate-Adapter, Control, LH |
| 42 | 1-603735 | 4 | Bushing-Flanged |
| 43 | 114-8629 | 2 | Bolt-Shoulder |
| 44 | 1-633545 | 2 | Spacer |
| 46 | 3296-39 | 1 | Nut-Lock, NI |
| 47 | 3296-47 | 2 | Nut-Lock, NI |



Trencher Assembly

| Ref | Part No. | Qty. | Description |
|-----|-------------|------|--------------------|
| 1 | 114-8631 | 1 | Trencher Head ASM |
| 1:2 | 99-9952 | 2 | Decal-Danger |
| 2 | 106-8871 | 1 | Bearing-Ball |
| 3 | 112-4979 | 1 | Spacer |
| 4 | 111199 | 1 | Bearing-Ball |
| 5 | 114-2955 | 1 | Seal-Grease |
| 6 | 112-4993 | 1 | Trencher Shaft ASM |
| 7 | 114-3053 | 1 | Motor-HYD |
| 8 | 114-2956 | 1 | Lockwasher-Bearing |
| 9 | 88-1450 | 1 | Locknut-Bearing |
| 10 | 114-2954 | 1 | Spline-Collar |
| 11 | 3274-89 | 2 | Screw-HSH |
| 12 | 112-2602 | 1 | HYD Cylinder ASM |
| 13 | 114-2937 | 1 | Pin-Pivot |
| 15 | 104-1964 | 1 | Sprocket-Trencher |
| 16 | 302-5 | 3 | Fitting-Grease |
| 17 | 3274-4 | 6 | Screw-HSH |
| 18 | 112-4996-03 | 1 | Trencher Auger ASM |
| 19 | 325-11 | 1 | Screw-HH |
| 20 | 3296-23 | 1 | Nut-Lock, NI |
| 21 | 321-18 | 1 | Screw-HH |
| 22 | 3296-42 | 1 | Nut-Lock, NI |
| 23 | 114-8569 | 1 | Shield-Dirt |
| 24 | 115-1220-03 | 1 | Bar-Clamp |

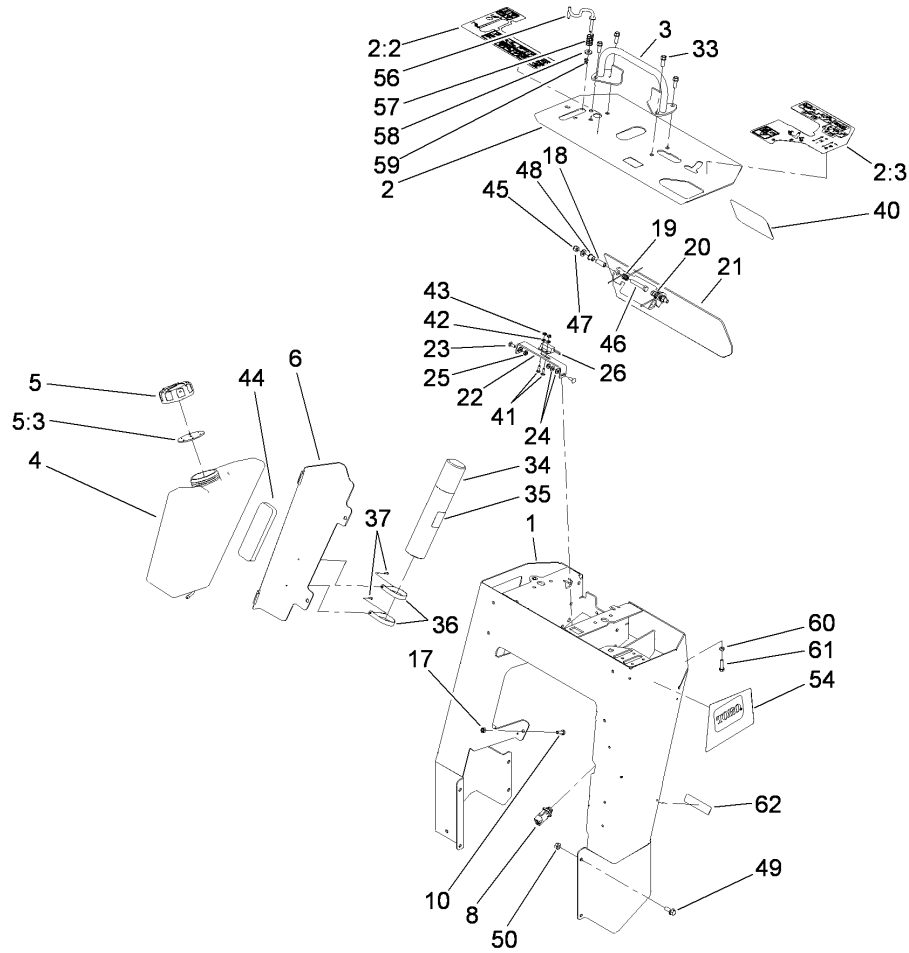
| Ref | Part No. | Qty. | Description |
|-----|-------------|------|---------------------|
| 29 | 115-1279-03 | 1 | Bracket-Shield |
| 30 | 115-4049 | 2 | Screw-HSH, |
| 31 | 322-5 | 8 | Screw-HH |
| 32 | 3256-3 | 4 | Washer-Flat |
| 33 | 3296-29 | 11 | Nut-Lock, NI |
| 34 | 114-8573 | 1 | Spacer-Pivot |
| 35 | 117-6327 | 1 | Bolt-HH, |
| 36 | 3296-53 | 1 | Nut-Lock, NI |
| 37 | 322-23 | 1 | Screw-HH |
| 38 | 115-4001-03 | 1 | Plate-Strap, Shield |
| 39 | 302-34 | 1 | Fitting-Lube |
| 40 | 104-9216 | 2 | Washer-Hardened |



Hydraulic Motor Assembly No. 114-3053

| Ref | Part No. | Qty. | Description |
|-------|----------|------|-----------------------|
| 1 | 1-000119 | 1 | Seal Kit |
| ② 1:1 | | 1 | Ring-Back Up |
| ② 1:2 | | 1 | Seal-Commutator |
| ② 1:3 | | 1 | Seal-Shaft (Viton) |
| ② 1:4 | | 1 | Washer-Back Up, Steel |
| ② 1:5 | | 5 | Ring-Seal (Viton) |
| ② 1:7 | | 1 | Seal-Dirt And Water |

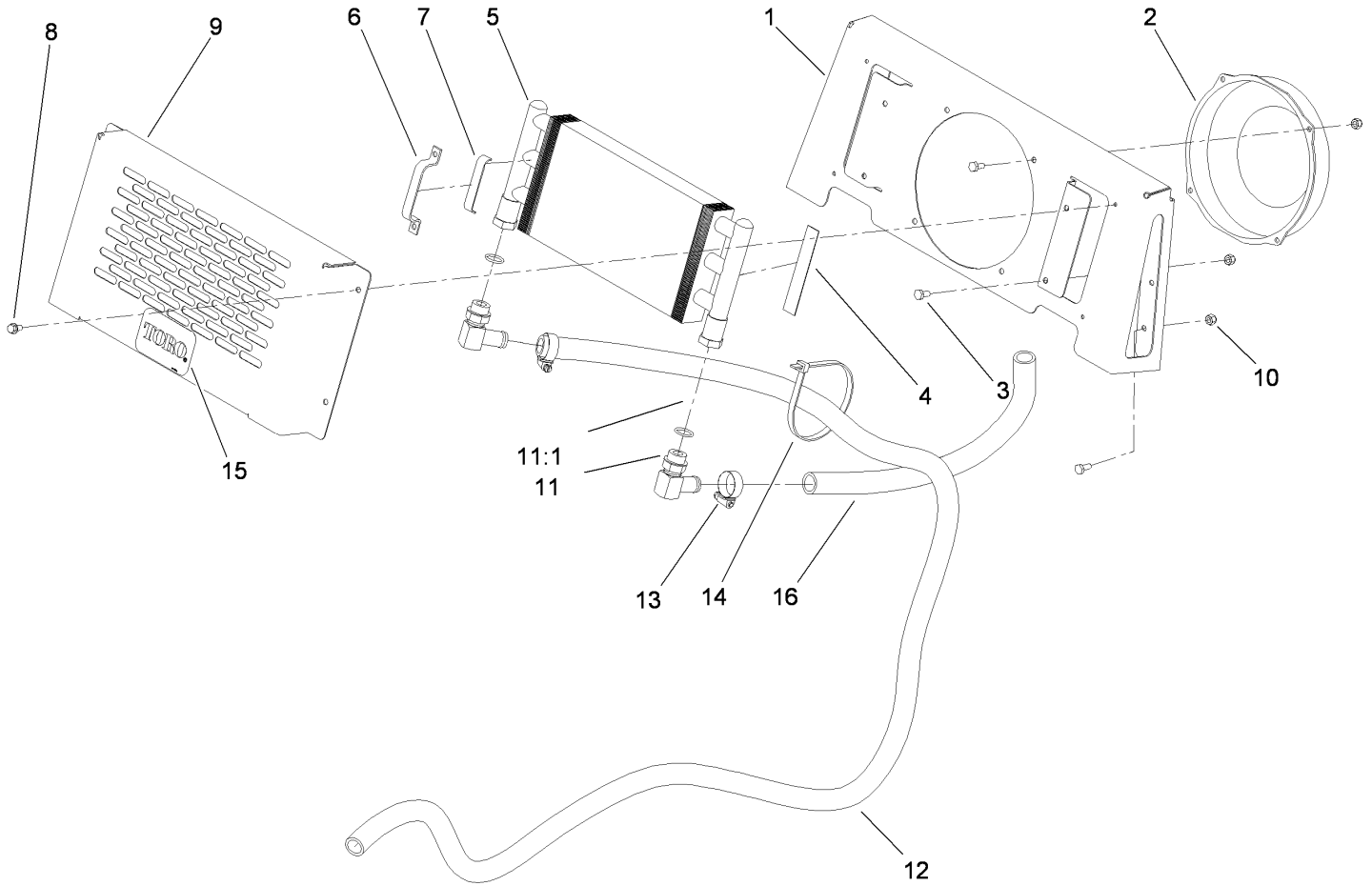
| | | | |
|--|--|--|--|
| | | | |
| | | | |
| | | | |
| | | | |
| | | | |



Control Tower Assembly

| Ref | Part No. | Qty. | Description |
|-----|-------------|------|---------------------|
| 1 | 115-4000-01 | 1 | Tower ASM |
| 2 | 114-8633 | 1 | Panel-Control |
| 2:2 | 115-1231 | 1 | Decal-Console, RH |
| 2:3 | 115-1230 | 1 | Decal-Console, LH |
| 3 | 106-7715 | 1 | Reference Bar ASM |
| 4 | 112-4972 | 1 | Tank-Fuel |
| 5 | 104-7418 | 1 | Cap-Fuel, Gas |
| 5:3 | 104-7420 | 1 | Gasket-Vented |
| 6 | 114-3065-01 | 1 | Bracket-Cover, Tank |
| 8 | 100-1268 | 1 | Switch-Plunger |
| 10 | 322-5 | 2 | Screw-HH |
| 17 | 3296-29 | 2 | Nut-Lock, NI |
| 18 | 114-1337 | 2 | Spacer-Spring |
| 19 | 98-8425 | 1 | Spring-Torsion, LH |
| 20 | 98-8424 | 1 | Spring-Torsion, RH |
| 21 | 114-3012-03 | 1 | Reverse Plate ASM |
| 22 | 100-1263 | 1 | Plate-Switch |
| 23 | 3229-1 | 2 | Screw-CARR |
| 24 | 3256-22 | 4 | Washer-Flat |
| 25 | 32149-2 | 2 | Nut-Keps |
| 26 | 100-1270 | 1 | Switch-Proximity |
| 33 | 95-1726 | 4 | Screw-Taptite |
| 34 | 104-7048 | 1 | Cap-Housing |
| 35 | 104-7050 | 1 | Housing-Manual |

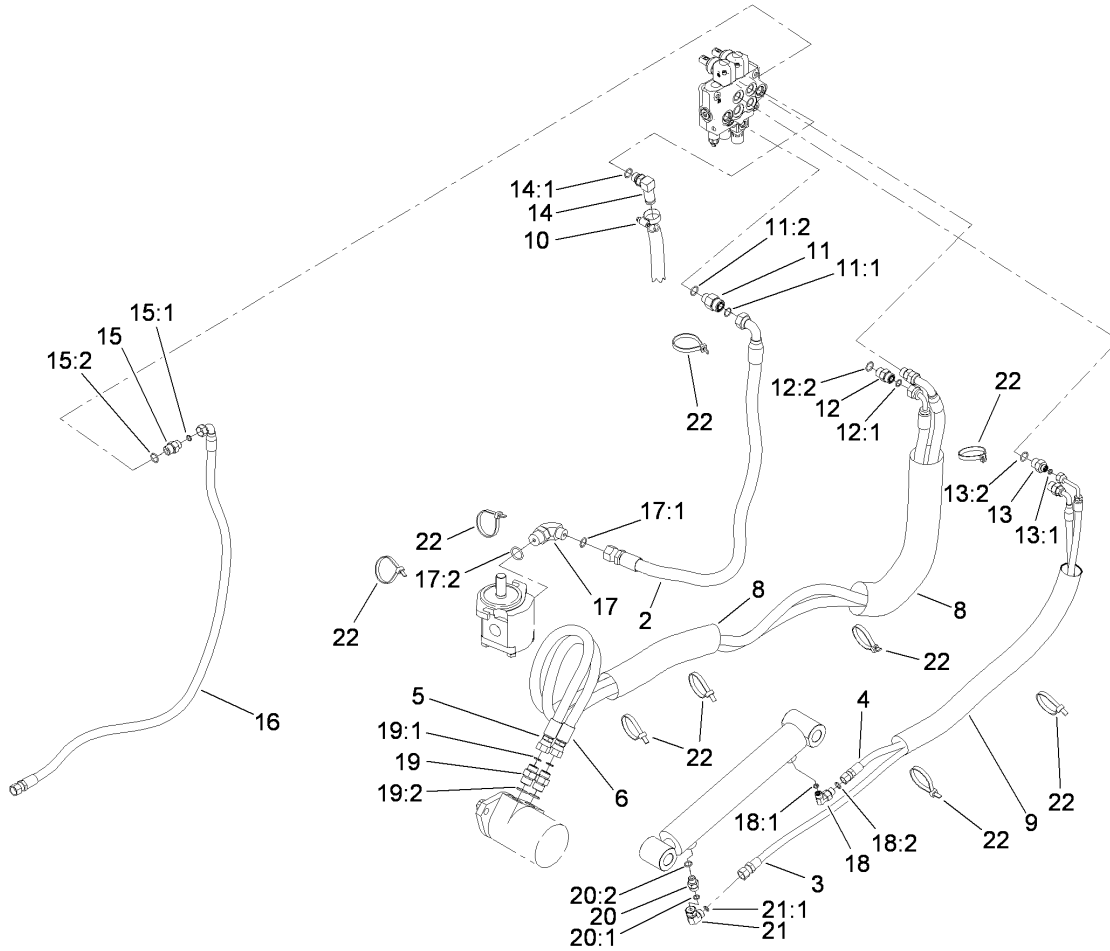
| Ref | Part No. | Qty. | Description |
|-----|----------|------|----------------------|
| 36 | 2412-120 | 2 | R-Clamp |
| 37 | 3269-17 | 2 | Rivet-Pop |
| 40 | 105-1217 | 1 | Decal |
| 41 | 3229-20 | 2 | Screw-CARR |
| 42 | 3256-51 | 2 | Washer-Flat |
| 43 | 32149-7 | 2 | Nut-Keps |
| 44 | 107-7507 | 1 | Pad-Foam |
| 45 | 3296-39 | 2 | Nut-Lock, NI |
| 46 | 323-11 | 2 | Screw-HH |
| 47 | 3256-24 | 2 | Washer-Flat |
| 48 | 256-257 | 2 | Bushing-Nyliner |
| 49 | 3234-11 | 8 | Screw-HHF |
| 50 | 32128-40 | 8 | Nut-Flange |
| 54 | 115-4006 | 1 | Decal |
| 56 | 114-8727 | 1 | Rod-Interlock |
| 57 | 85-6750 | 1 | Spring-Control |
| 58 | 88-7200 | 1 | Washer-Flat |
| 59 | 3290-307 | 1 | Pin-Hair |
| 60 | 3210-7 | 1 | Screw-HH |
| 61 | 3220-2 | 1 | Nut-Jam |
| 62 | 117-2718 | 1 | Decal-Spark Arrester |



Oil Cooler Assembly

| Ref | Part No. | Qty. | Description |
|------|-------------|------|-----------------------|
| 1 | 114-8588-03 | 1 | Bracket-Fan |
| 2 | 104-2809 | 1 | Fan |
| 3 | 321-3 | 12 | Screw-HH |
| 4 | 94-9566 | 2 | Pad-Footrest |
| 5 | 105-0352 | 1 | Exchanger-Heat |
| 6 | 104-2803 | 2 | Support-Cooler |
| 7 | 104-2816 | 2 | Pad-Support |
| 8 | 32104-116 | 4 | Screw |
| 9 | 114-8591-03 | 1 | Bracket-Cover, Cooler |
| 10 | 3296-42 | 12 | Nut-Lock, NI |
| 11 | 87-8170 | 2 | Fitting |
| 11:1 | 237-80 | 1 | O-Ring |
| 12 | 115-1207 | 1 | Hose-Return |
| 13 | 2412-129 | 2 | Clamp-Hose |
| 14 | 3334-945 | 1 | Tie-Cable |
| 15 | 99-2385 | 1 | Decal |
| 16 | 117-3966 | 1 | Hose-Cooler |

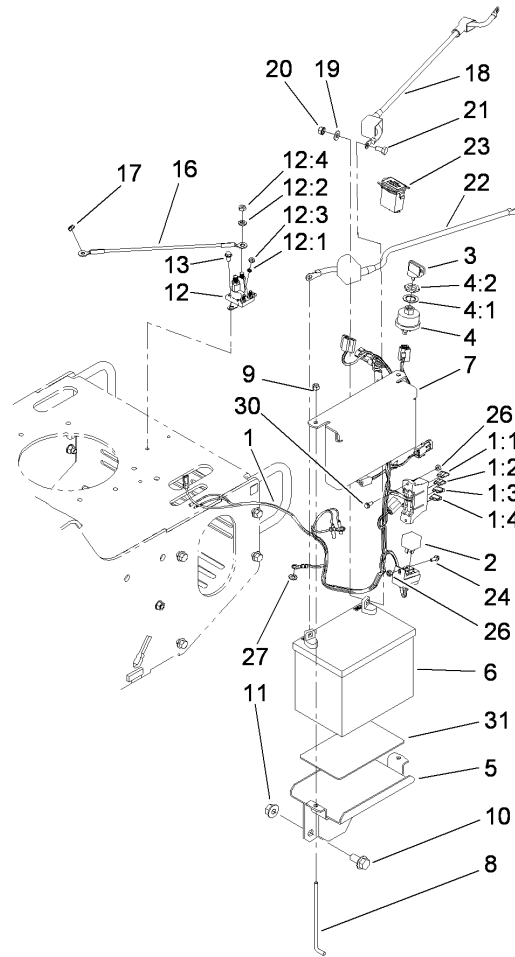
| | | | |
|--|--|--|--|
| | | | |
| | | | |
| | | | |
| | | | |



Hydraulic Routing Assembly

| Ref | Part No. | Qty. | Description |
|------|----------|------|-----------------------|
| 2 | 114-3043 | 1 | Hose ASM |
| 3 | 114-3044 | 1 | Hose ASM |
| 4 | 114-3045 | 1 | Hose ASM |
| 5 | 114-3046 | 1 | Hose ASM |
| 6 | 114-3085 | 1 | HYD Hose ASM |
| 8 | 99-5648 | 2 | Sleeve-Protective |
| 9 | 115-4064 | 1 | Sleeve-Protective |
| 10 | 2412-129 | 2 | Clamp-Hose |
| 11 | 340-155 | 1 | Fitting-HYD, Straight |
| 11:1 | 237-79 | 1 | O-Ring |
| 11:2 | 237-151 | 1 | O-Ring |
| 12 | 340-4 | 2 | Fitting-HYD, Straight |
| 12:1 | 237-30 | 1 | O-Ring |
| 12:2 | 237-79 | 1 | O-Ring |
| 13 | 340-133 | 2 | Adapter |
| 13:1 | 237-79 | 1 | O-Ring |
| 13:2 | 237-21 | 1 | O-Ring |
| 14 | 353-954 | 1 | Adapter |
| 14:1 | 237-79 | 1 | O-Ring |
| 15 | 340-3 | 1 | Adapter |
| 15:1 | 237-22 | 1 | O-Ring |
| 15:2 | 237-79 | 1 | O-Ring |
| 16 | 115-1296 | 1 | HYD Hose ASM |
| 17 | 340-139 | 1 | Fitting-HYD, 90 DEG |

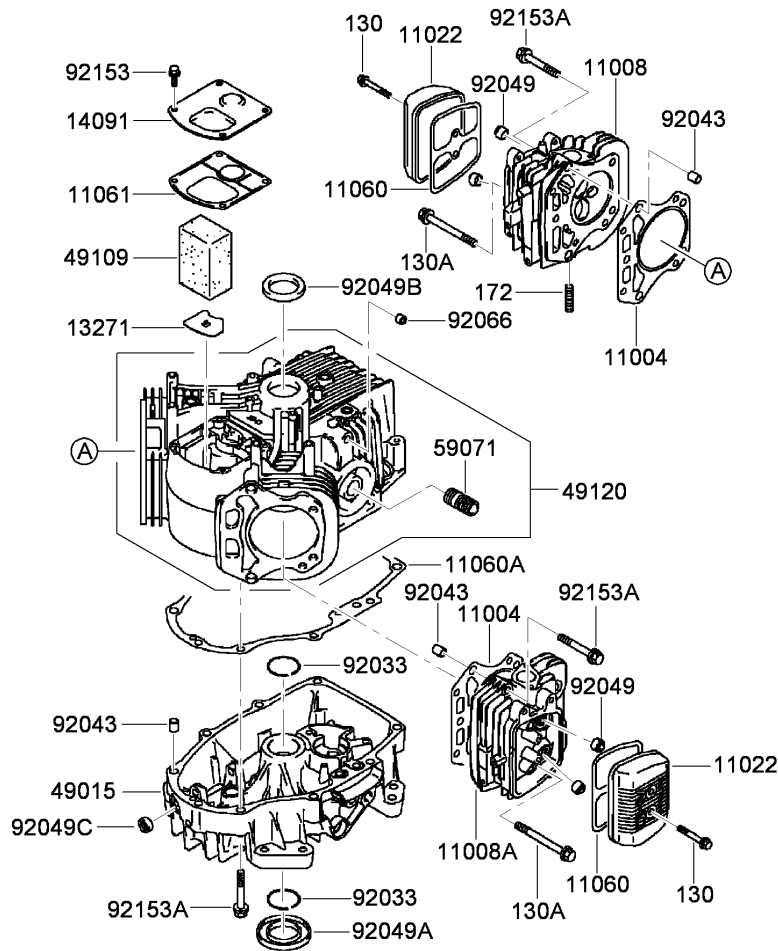
| Ref | Part No. | Qty. | Description |
|------|----------|------|-----------------------|
| 17:1 | 237-81 | 1 | O-Ring |
| 17:2 | 237-65 | 1 | O-Ring |
| 18 | 340-82 | 1 | Adapter |
| 18:1 | 237-42 | 1 | O-Ring |
| 18:2 | 237-21 | 1 | O-Ring |
| 19 | 340-6 | 2 | Fitting-HYD, Straight |
| 19:1 | 237-30 | 1 | O-Ring |
| 19:2 | 237-80 | 1 | O-Ring |
| 20 | 115-4081 | 1 | Valve-Check |
| 20:1 | 237-42 | 1 | O-Ring |
| 20:2 | 237-22 | 1 | O-Ring |
| 21 | 340-159 | 1 | Fitting-HYD, 90 DEG |
| 21:1 | 237-22 | 2 | O-Ring |
| 22 | 3334-945 | 9 | Tie-Cable |



Electrical Assembly

| Ref | Part No. | Qty. | Description |
|------|-------------|------|--------------------------|
| 1 | 114-3084 | 1 | Harness-Wire |
| 1:1 | 109103 | 1 | Fuse-30 Amp |
| 1:2 | 109102 | 1 | Fuse-25 Amp |
| 1:3 | 109355 | 2 | Fuse-15 Amp |
| 1:4 | 116-0053 | 1 | Cap-Plug |
| 2 | 98-7249 | 1 | Relay |
| 3 | 63-8360 | 1 | Key-Ignition |
| 4 | 88-9830 | 1 | Key Switch ASM |
| 4:1 | 3254-5 | 1 | Washer-Tooth |
| 4:2 | 218-461 | 1 | Nut-HH |
| 5 | 105-3150-01 | 1 | Battery Tray ASM |
| 6 | 104-8162 | 1 | Battery |
| 7 | 115-6621-03 | 1 | Plate-Hold Down, Battery |
| 8 | 104-8567 | 2 | Holdown-Battery |
| 9 | 3296-42 | 2 | Nut-Lock, NI |
| 10 | 3234-6 | 2 | Screw-HHF |
| 11 | 32128-49 | 2 | Nut-HHF |
| 12 | 1-513075 | 1 | Switch-Solenoid |
| 12:1 | 3253-17 | 2 | Washer-Lock |
| 12:2 | 3253-4 | 2 | Washer-Lock |
| 12:3 | 3219-14 | 2 | Nut-Hex |
| 12:4 | 3220-2 | 2 | Nut-Jam |
| 13 | 32144-4 | 2 | Screw-HWH |
| 16 | 28-3891 | 1 | Wire-Solenoid/Starter |

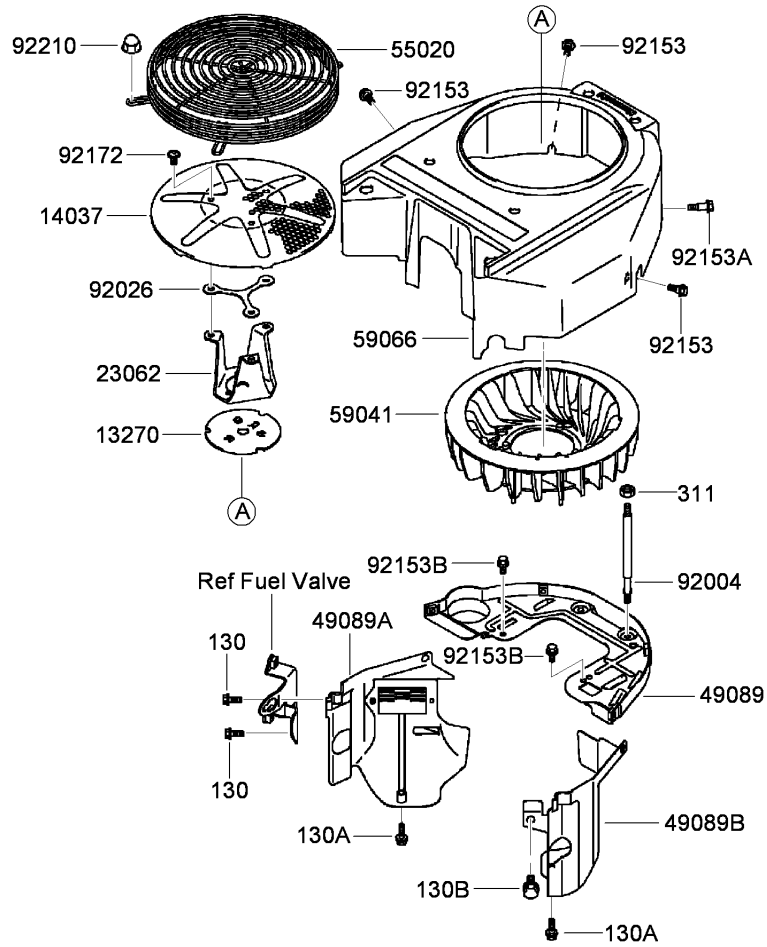
| Ref | Part No. | Qty. | Description |
|-----|----------|------|----------------------|
| 17 | 32149-2 | 1 | Nut-Keps |
| 18 | 112-9708 | 1 | Cable-Battery, Red |
| 19 | 3256-2 | 2 | Washer-Flat |
| 20 | 32149-1 | 2 | Nut-Keps |
| 21 | 322-3 | 2 | Screw-HH |
| 22 | 115-4024 | 1 | Cable-Battery, Black |
| 23 | 1-513374 | 1 | Meter-Hour |
| 24 | 32105-23 | 1 | Screw |
| 26 | 3296-2 | 2 | Nut-Lock, NI |
| 27 | 3255-8 | 1 | Washer-Lock |
| 30 | 32105-13 | 1 | Screw-HWH |
| 31 | 62-4300 | 1 | Pad-Skid, Anti |



Cylinder and Crankcase Assembly

| Ref | Part No. | Qty. | Description |
|--------|----------|------|-------------------------------|
| 130 | 100-2805 | 5 | Bolt-Flanged (6X40) |
| 130A | 114-8657 | 2 | Bolt-Flanged (8X75) |
| 172 | 114-8658 | 4 | Bolt-Stud (8X18) |
| 11004 | 115-6550 | 2 | Gasket-Head |
| 11008 | 115-6551 | 1 | Head-Cylinder, No.1 |
| 11008A | 115-6552 | 1 | Head-Cylinder, No.2 |
| 11022 | 114-8643 | 2 | Case-Rocker |
| 11060 | 114-8644 | 2 | Gasket-Case, Rocker |
| 11060A | 115-6553 | 1 | Gasket-Cover, Crankcase |
| 11061 | 115-6554 | 1 | Gasket-Breather |
| 13271 | 115-6555 | 1 | Plate |
| 14091 | 115-6556 | 1 | Cover |
| 49015 | 115-6557 | 1 | Cover-Crankcase |
| 49109 | 115-6558 | 1 | Element-Breather |
| 49120 | 115-6559 | 1 | Crankcase |
| 59071 | 95-9715 | 1 | Joint |
| 92033 | 115-6560 | 2 | Ring-Snap |
| 92043 | 108-2510 | 6 | Pin |
| 92049 | 114-8650 | 4 | Seal-Oil, Rv C2 (6X11X10.2) |
| 92049A | 114-8651 | 1 | Seal-Oil, Sd (35X62X8 L HSH) |
| 92049B | 114-8652 | 1 | Seal-Oil, S D (35X48X8 R HSH) |
| 92049C | 114-8653 | 1 | Seal-Oil, S O (8X14X5 HSH) |
| 92066 | 115-6405 | 1 | Plug |
| 92153 | 114-8655 | 4 | Bolt (6X12) |

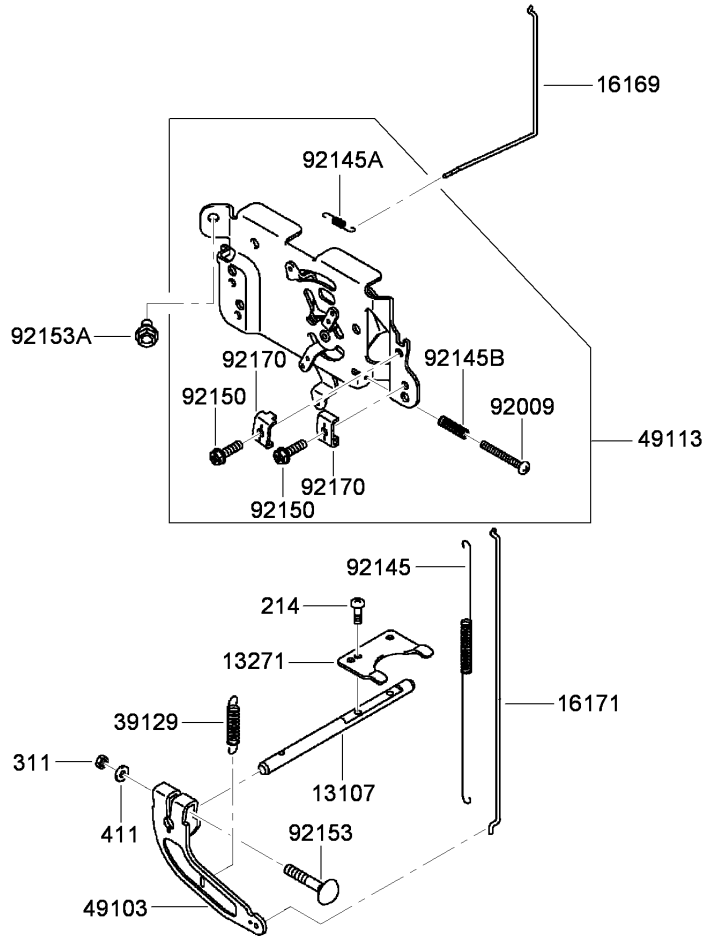
| Ref | Part No. | Qty. | Description |
|--------|----------|------|-------------|
| 92153A | 114-8656 | 17 | Bolt (8X50) |



Cooling Equipment Assembly

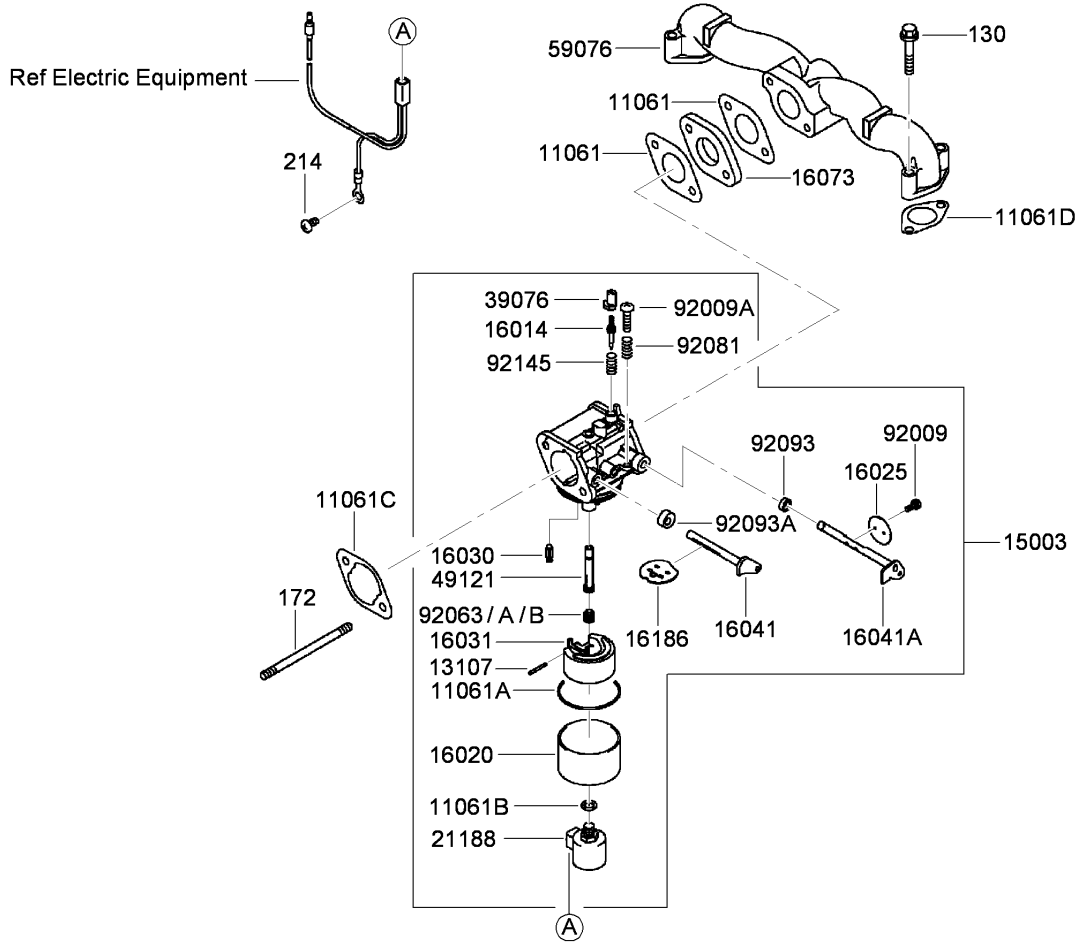
| Ref | Part No. | Qty. | Description |
|--------|----------|------|---------------------|
| 130 | 95-9837 | 2 | Bolt-Flanged (6X16) |
| 130A | 93-8548 | 2 | Bolt-Flanged (6X25) |
| 130B | 93-8679 | 1 | Bolt-Flanged |
| 311 | 114-8698 | 2 | Nut-Hex (6Mm) |
| 13270 | 114-8689 | 1 | Plate |
| 14037 | 115-6568 | 1 | Screen |
| 23062 | 115-6569 | 1 | Bracket |
| 49089 | 115-6570 | 1 | Shroud-Engine |
| 49089A | 115-6571 | 1 | Shroud-Engine |
| 49089B | 115-6572 | 1 | Shroud-Engine |
| 55020 | 115-6573 | 1 | Guard |
| 59041 | 114-8694 | 1 | Fan |
| 59066 | 115-6574 | 1 | Housing-Fan |
| 92004 | 115-6575 | 2 | Stud |
| 92026 | 115-6576 | 1 | Spacer |
| 92153 | 108-2544 | 3 | Bolt |
| 92153A | 114-8697 | 1 | Bolt |
| 92153B | 114-8655 | 2 | Bolt (6X12) |
| 92172 | 115-6577 | 3 | Screw-Socket (6X12) |
| 92210 | 100-2603 | 1 | Nut |

| | | | |
|--|--|--|--|
| | | | |
|--|--|--|--|



Control Equipment Assembly

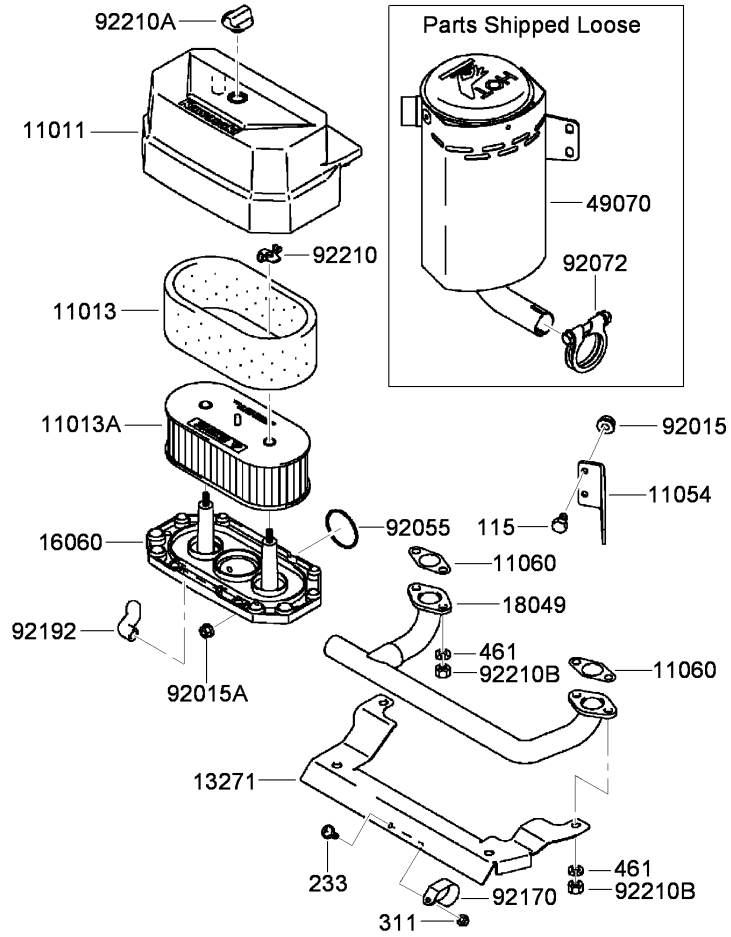
| Ref | Part No. | Qty. | Description |
|--------|----------|------|----------------------|
| 214 | 115-6422 | 2 | Cable-Throttle/Choke |
| 311 | 114-8698 | 1 | Nut-Hex (6Mm) |
| 411 | 115-6423 | 1 | Washer-Plain (6Mm) |
| 13107 | 115-6409 | 1 | Shaft |
| 13271 | 115-6410 | 1 | Plate |
| 16169 | 115-6586 | 1 | Link-Choke |
| 16171 | 115-6587 | 1 | Link |
| 39129 | 115-6413 | 1 | Spring-Governor |
| 49103 | 115-6414 | 1 | Arm-Governor |
| 49113 | 115-6588 | 1 | Panel-Control |
| 92009 | 115-6416 | 1 | Screw (4X35) |
| 92145 | 115-6417 | 1 | Spring |
| 92145A | 115-6418 | 1 | Spring |
| 92145B | 115-6620 | 1 | Spring |
| 92150 | 95-9853 | 2 | Bolt (5X18) |
| 92153 | 115-6420 | 1 | Bolt (6X35) |
| 92153A | 114-8655 | 2 | Bolt (6X12) |
| 92170 | 115-6421 | 2 | Cable-Throttle/Choke |



Carburetor Assembly

| Ref | Part No. | Qty. | Description |
|--------|----------|------|----------------------------|
| 130 | 115-6591 | 4 | Bolt-Flanged (6X35) |
| 172 | 115-6596 | 2 | Bolt-Stud (6X90) |
| 214 | 115-6598 | 1 | Screw-Pan+- (5X10) |
| 11061 | 115-6424 | 2 | Gasket-Insulator |
| 11061A | 115-6425 | 1 | Gasket-Chamber |
| 11061B | 108-2580 | 1 | Gasket-Screw |
| 11061C | 115-6426 | 1 | Gasket-Cleaner, Air |
| 11061D | 115-6590 | 2 | Gasket |
| 13107 | 115-6427 | 1 | Shaft |
| 15003 | 115-6592 | 1 | Carburetor ASM |
| 16014 | 115-6593 | 1 | Screw-Air, Pilot |
| 16020 | 115-6430 | 1 | Chamber-Float |
| 16025 | 115-6431 | 1 | Valve-Throttle |
| 16030 | 115-6432 | 1 | Valve-Float |
| 16031 | 115-6433 | 1 | Float |
| 16041 | 115-6434 | 1 | Shaft-Choke, Carburetor |
| 16041A | 115-6435 | 1 | Shaft-Throttle, Carburetor |
| 16073 | 115-6594 | 1 | Insulator |
| 16186 | 115-6595 | 1 | Choke Valve ASM |
| 21188 | 115-6597 | 1 | Solenoid |
| 39076 | 108-2593 | 1 | Limiter |
| 49121 | 115-6599 | 1 | Nozzle-Main |
| 59076 | 115-6600 | 1 | Manifold-Intake |
| 92009 | 108-2595 | 2 | Screw |

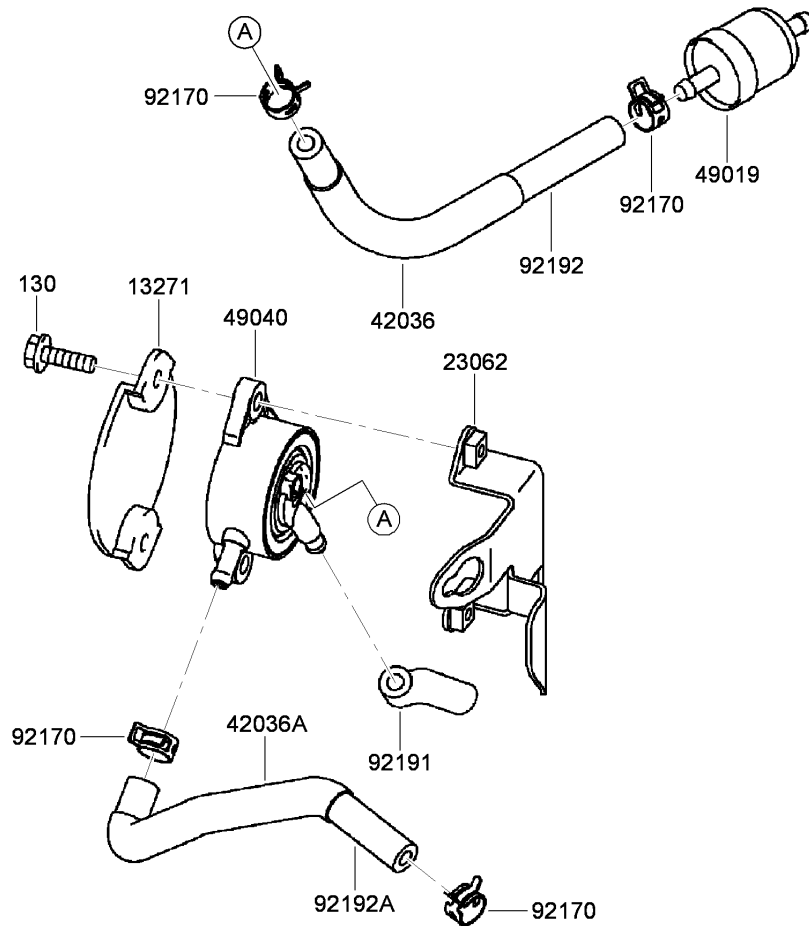
| Ref | Part No. | Qty. | Description |
|--------|----------|------|--------------------|
| 92009A | 108-2596 | 1 | Screw |
| 92063 | 115-6601 | 1 | Jet-Main (No. 105) |
| 92063A | 115-6602 | 1 | Jet-Main (No.100) |
| 92063B | 115-6603 | 1 | Jet-Main (No. 110) |
| 92081 | 108-2598 | 1 | Spring |
| 92093 | 108-2599 | 1 | Seal |
| 92093A | 115-6443 | 1 | Seal |
| 92145 | 108-2600 | 1 | Spring |



Air Filter and Muffler Assembly

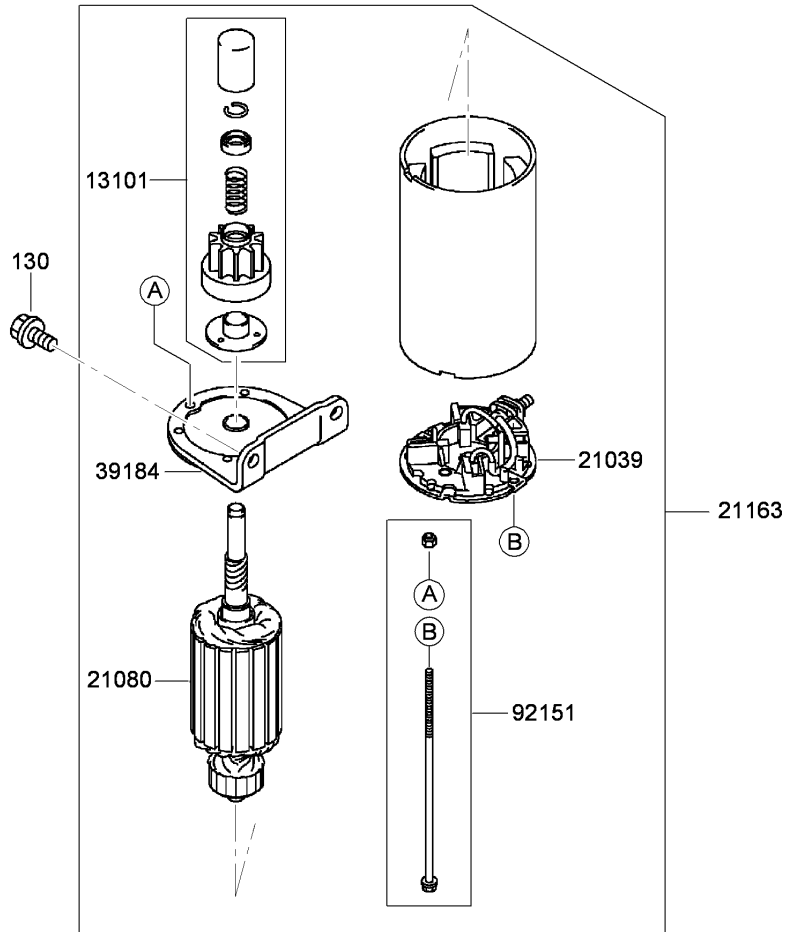
| Ref | Part No. | Qty. | Description |
|--------|----------|------|--------------------------|
| 115 | 115-6606 | 2 | Bolt-Upset, Small (8X14) |
| 233 | 115-6494 | 1 | Screw-Pan (4X16) |
| 311 | 115-6495 | 1 | Nut-Hex (4Mm) |
| 461 | 115-6496 | 4 | Washer-Spring (8Mm) |
| 11011 | 115-6604 | 1 | Case-Filter, Air |
| 11013 | 115-6473 | 1 | Element-Filter, Air |
| 11013A | 115-6474 | 1 | Element-Filter, Air |
| 11054 | 115-6605 | 1 | Bracket |
| 11060 | 115-6477 | 2 | Gasket-Muffler |
| 13271 | 115-6607 | 1 | Plate |
| 16060 | 115-6479 | 1 | Pipe-Intake |
| 18049 | 115-6608 | 1 | Pipe-Exhaust |
| 49070 | 115-6609 | 1 | Muffler, |
| 92015 | 95-9793 | 2 | Nut |
| 92015A | 93-8631 | 2 | Nut |
| 92055 | 115-6485 | 1 | O-Ring |
| 92072 | 115-6486 | 1 | Band, |
| 92170 | 115-6488 | 1 | Clamp |
| 92192 | 115-6489 | 1 | Tube |
| 92210 | 115-6490 | 2 | Nut |
| 92210A | 108-2612 | 1 | Nut |
| 92210B | 115-6611 | 4 | Nut-Hex |

| | | | |
|--|--|--|--|
| | | | |
| | | | |
| | | | |
| | | | |



Fuel Tank and Valve Assembly

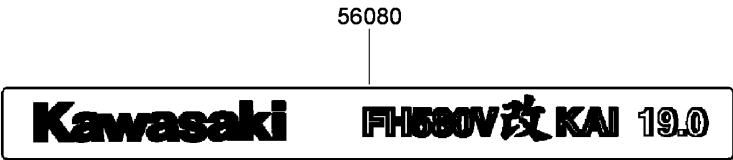
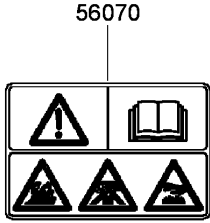
| Ref | Part No. | Qty. | Description |
|--------|----------|------|----------------------|
| 130 | 95-9893 | 2 | Bolt-Flanged (6X20) |
| 13271 | 115-6498 | 1 | Plate |
| 23062 | 115-6445 | 1 | Bracket |
| 42036 | 115-6499 | 1 | Sleeve |
| 42036A | 115-6446 | 1 | Sleeve |
| 49019 | 115-6447 | 1 | Filter-Fuel |
| 49040 | 115-6448 | 1 | Pump-Fuel |
| 92170 | 100-2820 | 4 | Clamp |
| 92191 | 115-6450 | 1 | Tube |
| 92192 | 115-6451 | 1 | Tube (6.35X12.7X160) |
| 92192A | 115-6452 | 1 | Tube (6.35X12.7X180) |



Starter Assembly

| Ref | Part No. | Qty. | Description |
|-------|----------|------|------------------|
| 130 | 93-8679 | 2 | Bolt-Flanged |
| 13101 | 115-6612 | 1 | Gear ASM |
| 21039 | 115-6613 | 1 | Brush |
| 21080 | 115-6614 | 1 | Armature |
| 21163 | 115-6615 | 1 | Starter-Electric |
| 39184 | 115-6616 | 1 | Bracket ASM |
| 92151 | 115-6617 | 1 | Bolt |

| | | | |
|--|--|--|--|
| | | | |
|--|--|--|--|



Label Set

| Ref | Part No. | Qty. | Description |
|-------|----------|------|---------------|
| 56070 | 115-6469 | 1 | Label-Warning |
| 56080 | 115-6619 | 1 | Label-Brand |

Attachments and Accessories

For 22971 - TRX-19 Trencher

| Product Name | Model/Part |
|------------------------------|------------|
| Heavy-Duty Air Filter Kit | 115-4029 |
| Crumber Kit | 22477 |
| 24in X 4in Soil Chain | 22480 |
| 24in X 4in Combination Chain | 22481 |
| 24in X 4in Rock Tooth Chain | 22482 |
| 24in X 6in Soil Chain | 22483 |
| 24in X 6in Combination Chain | 22484 |
| 24in X 6in Rock Tooth Chain | 22485 |
| 36in X 4in Soil Chain | 22486 |
| 36in X 4in Combination Chain | 22487 |
| 36in X 4in Rock Tooth Chain | 22488 |
| 36in X 6in Rock Tooth Chain | 22489 |
| 36in X 6in Soil Chain | 22490 |
| 36in X 6in Combination Chain | 22491 |
| 48in x 4in Soil Chain | 22492 |
| 48in x 4in Combination Chain | 22493 |
| 48in x 6in Soil Chain | 22494 |
| 48in x 6in Combination Chain | 22495 |
| 24in Trencher Boom | 22975 |
| 36in Trencher Boom | 22976 |
| 48in Trencher Boom | 22977 |
| Backfill Blade | 22980 |

NOTES

NOTES

