



52in Side Discharge Mower Groundsmaster® 200 Series 3280-D and 3320

Model No. 30555 - 290000001 and up.

Parts Catalog

Ordering Replacement Parts

To order replacement parts, please supply the part number, the quantity, and the description of each part desired.

Understanding Reference Numbers

Each Identified part in an illustration has a reference number. The reference number for a part also appears in the parts list, along with other information about the part.

This catalog uses two special reference number formats, one to indicate parts in a service assembly and another to indicate the quantity of a given part in an illustration.

Service Assembly Reference Numbers

Parts in service assemblies have reference numbers in the form a:b. The a represents the reference number of the entire service assembly and the b represents a sequential number unique to each part within the service assembly.

For example, a wheel assembly might be identified by reference number 6, the tire by 6:1, the valve by 6:2, and the wheel by 6:3. When you order the assembly identified by reference number 6, you receive all parts identified by reference numbers 6:1, 6:2, and 6:3. However, you may also order any part individually. Reference numbers of this type appear in illustrations and in part lists.

Reference Numbers Indicating Quantity

In an illustration, if a reference number indicates more than one part, the reference number has the form nX y. The n represents the quantity of the part, the X is the multiplication symbol, and the y represents the reference number.

For example, in an illustration, the reference number 2X 37 means that two of the parts identified by reference number 37 are indicated.

Contents

Description	Page	Description	Page
Deck and Spindle Assembly 3	Carrier Frame Assembly 7
Drive Spindle Assembly No. 27-0870 4	Tire and Bearing Assembly No. 68-8970 8
Deck Assembly 5	Pivot Pin and Spacer Assembly 9
Cover and Gearbox Assembly 6	Attachments and Accessories List 10

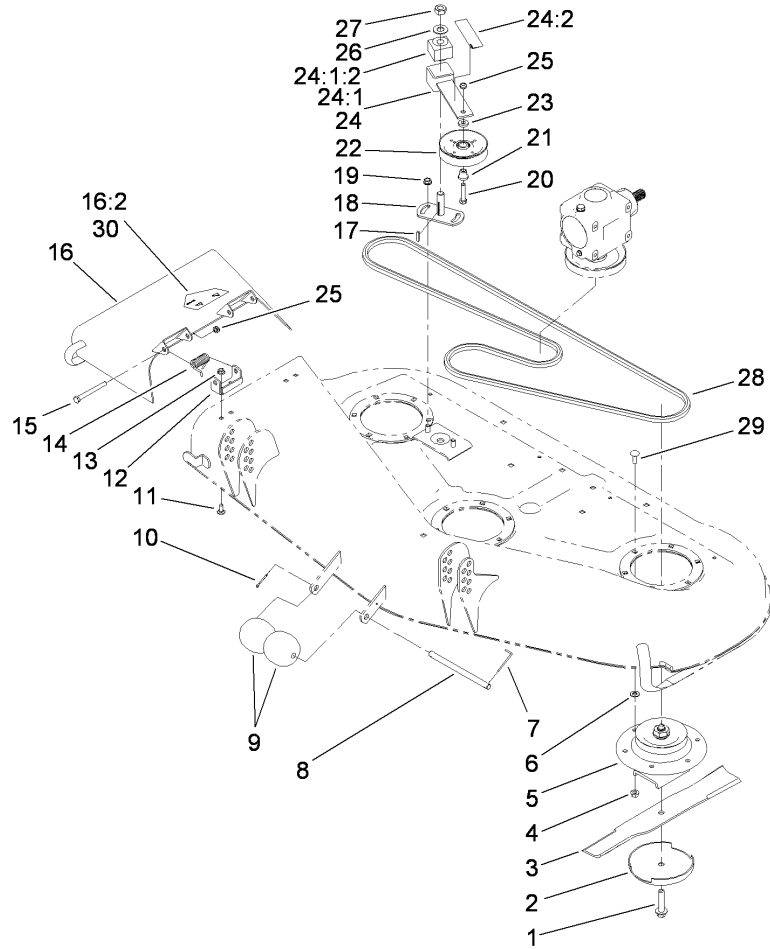
Part Description Abbreviations

Part descriptions in this catalog may include the following abbreviations.

AR. as required	HYD. hydraulic
ASM. assembly	LH. left hand
BBC. blade brake clutch	NI. nylon insert
CARR. carriage	NPTF. national pipe thread fine
DEG. degrees	PFH. phillips flat head
EXT. external	PPH. phillips pan head
FH. flat head	PPHTF. phillips pan head thread forming
GA. gauge	PRH. phillips round head
HD. heavy-duty	PTH. phillips truss head
HF. hex flange	PTO. power-take-off
HH. hex head	RH. right hand
HHF. hex head flange	ROPS. roll-over protection system
HHFTF. hex head flange thread forming	SFH. slotted fillister head
HJ. hex jam	SHH. slotted hex head
HLH. hex lag head	SHWH. slotted hex washer head
HOC. height-of-cut	SPH. slotted pan head
HSBH. hex socket button head	SQH. square head
HSFH. hex socket flat head	SRH. slotted round head
HSH. hex socket head	STD. standard
HWH. hex washer head	TAP. self tapping
HWHTF. hex washer head thread forming	TTH. torx truss head

Footnotes

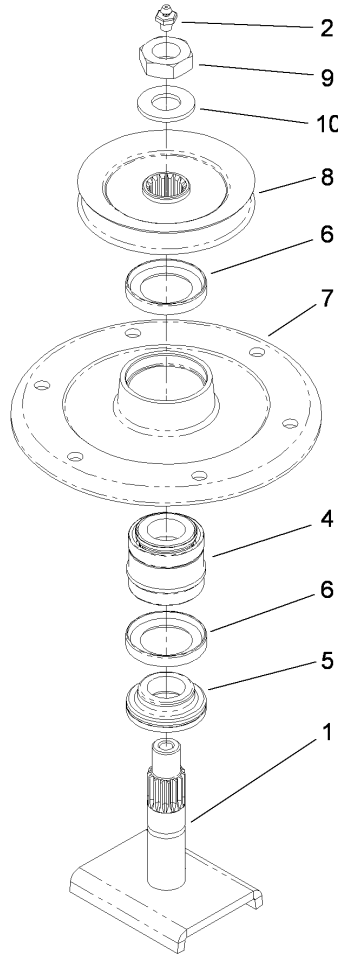
- ❶ Not serviced separately



Deck and Spindle Assembly

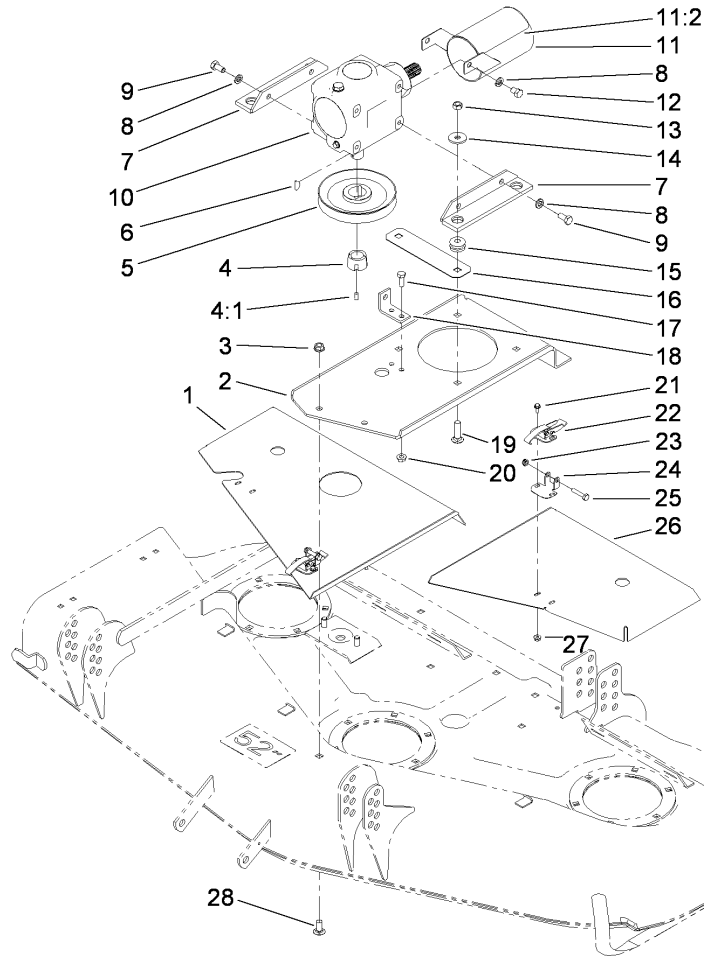
Ref	Part No.	Qty.	Description
1	92-5816	3	Bolt-Blade
2	72-9361	3	Cup-Scalp, Anti
3	104-1301	3	Blade-Atomic
3	27-0990-03	3	Blade-18 Inch
3	44-5480-03	3	Blade-High Sail
3	56-2390-03	3	Blade-Sail, Extra High
4	32128-21	18	Nut-HF
5	27-0870	3	Spindle ASM
6	3256-24	4	Washer-Flat
7	57-0690	1	Pin-Special
8	40-6400	1	Shaft-Roller
9	29-4820	2	Roller
10	3272-11	1	Pin-Cotter
11	3230-23	4	Screw-CARR
12	29-5590-01	2	Bracket-Pivot
13	32128-20	4	Nut-HF
14	40-6230	2	Spring
15	3211-15	2	Screw-HH
16	93-8714	1	Deflector ASM
16:2	106-6753	1	Decal-Danger, Ce
17	5-1077	1	Key-Square
18	28-9060	1	Plate-Idler
19	3290-357	2	Nut-HHF, Whiz
20	3211-8	1	Screw-HH

Ref	Part No.	Qty.	Description
21	65-5950	1	Bushing-Pulley
22	65-5940	1	Pulley-Idler
23	7-0081	1	Washer-Flat
24	100-6178	1	Idler Arm ASM
24:1		1	Idler Arm ASM
24:1:2	27-8490	1	Bushing-Rubber
24:2	100-6578	1	Decal-Danger
25	3296-5	3	Nut-Lock
26	3256-27	1	Washer-Flat
27	3296-33	1	Nut-Lock, NI
28	27-1160	1	V-Belt
29	3231-22	18	Screw-CARR
30	43-8480	1	Decal-Danger



Drive Spindle Assembly No. 27-0870

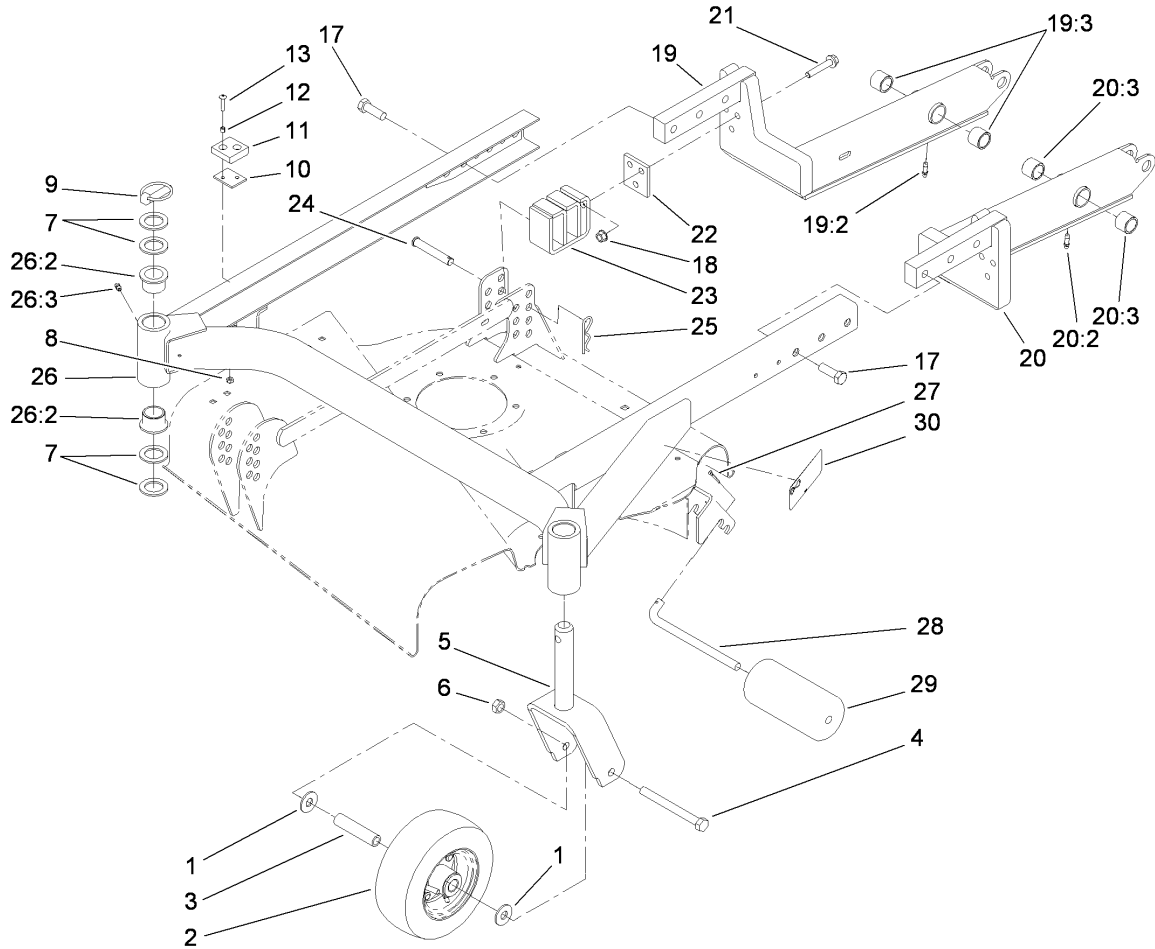
Ref	Part No.	Qty.	Description				
1	27-0920-03	1	Shaft ASM				
2	302-2	1	Fitting-Grease				
4	46-8530	1	Bearing ASM				
5	27-0950	1	Spacer				
6	253-139	2	Seal-Oil				
7	61-4160	1	Housing-Spindle				
8	27-0970-03	1	Pulley ASM				
9	32146-20	1	Nut-Jam				
10	106-0776	1	Washer-Pinion				



Cover and Gearbox Assembly

Ref	Part No.	Qty.	Description
1	72-9330-01	1	RH Deck Cover
2	72-9230-01	1	Base-Case, Gear
3	3290-357	4	Nut-HHF, Whiz
4	27-6140	1	Bushing-Lock, Taper
4:1	3245-9	2	Screw-Set
5	63-9900-03	1	Gearbox Pulley ASM
6	3257-5	1	Key-Woodruff
7	68-8560-03	2	Bracket-Gearbox
8	3253-21	6	Washer-Lock
9	323-4	4	Screw-HH
10	108-1370	1	Gearbox Replacement Kit
11	107-2904	1	PTO Guard ASM
11:2	107-2915	1	Decal-Danger
12	323-2	2	Screw-HH
13	32153-2	4	Nut-Lock, Side
14	63-8410	4	Washer
15	63-9750	4	Mount
16	68-9890-01	1	Cover-Gearbox, Front
17	322-4	2	Screw-HH
18	72-9240-01	1	Bracket-Extension
19	3231-26	4	Screw-CARR
20	32128-20	2	Nut-HF
21	3290-321	6	Screw-HWH
22	249-21	3	Clamp-Slotted

Ref	Part No.	Qty.	Description
23	3296-56	2	Nut-Lock, NI
24	93-7043	2	Retainer-Latch
25	321-8	2	Screw-HH
26	72-9340-01	1	LH Deck Cover
27	32128-17	6	Nut-Lock, Flange
28	3231-27	4	Screw-CARR



Carrier Frame Assembly

Ref	Part No.	Qty.	Description
1	3256-6	4	Washer-Flat
2	68-8970	2	Tire And Bearing ASM
3	68-8980	2	Spanner-Tire
4	325-19	2	Screw-HH
5	68-8900-01	2	Front Castor Fork ASM
6	32153-5	2	Nut-Lock, Side
7	3-6781	8	Washer-Thrust
8	3296-2	4	Nut-Lock, NI
9	283-71	2	Pin-Lynch
10	42-6200	3	Shim-Cushion
11	40-0330	2	Cushion-Rubber
12	40-9520	4	Spacer
13	32122-28	4	Screw
17	325-32	6	Screw-HH
18	32128-40	6	Nut-Flange
19	76-3080	1	RH Lift Arm ASM
19:2	302-62	1	Fitting-Grease
19:3	92-5648	2	Bushing
20	76-3090	1	LH Lift Arm ASM
20:2	302-62	1	Fitting-Grease
20:3	92-5648	2	Bushing
21	66-9302	6	Screw-HHF, Whiz
22	83-4580-01	2	Spacer-Cradle
23	83-4520-01	2	Rear Cradle ASM

Ref	Part No.	Qty.	Description
24	283-55	4	Pin-Clevis
25	3290-355	4	Pin-Hair
26	83-4550	1	52-Inch Carrier Frame ASM
26:2	94-1291	4	Bushing
26:3	302-5	2	Fitting-Grease
27	3272-11	2	Pin-Cotter
28	40-0340	2	Shaft-Roller, Rear
29	36-1740	2	Roller-Deck
30	93-7819	1	Decal-HOC

Attachments and Accessories

For 30555 - 52in Side Discharge Mower, Groundsmaster 200 Series, 3280-D & 3320

Product Name	Model/Part
Blade-Atomic	104-1301
18in Blade Service Pack	108-1477
Castor Wheel	27-1050
52in Blower Kit	30502
Blade-High Sail	44-5480
Blade	56-2390-03
Recycler Kit	59225
Tire and Bearing Asm	68-8970
Blade and Belt Kit	95-3070
Caster Wheel Kit	95-3077
Spindle Kit	95-3078

NOTES

