

Zero Turn Radius Mowers

All models

Setup Instructions

Loose Parts

Use the chart below to verify that all parts have been shipped.

Procedure	Description	Qty.	Use
1	No parts required	–	Set up the motion control levers.
2	Clevis pin Hair Pin	1 1	Install the seat cable.
3	No parts required	–	Connect the battery.
4	Ignition Key Hose coupling Operator's Manual Engine Operator's Manual Operator Training Material	1 1 1 1 1	Complete the Setup.

Note: Determine the left and right sides of the machine from the normal operating position.

1

Setting Up the Motion Control Levers

No Parts Required

Procedure

1. Remove the upper bolt (3/8 x 1 inch) and washer; loosen the lower bolt (3/8 x 1 inch) as shown in Figure 1. Raise the motion control levers.
2. Align the holes in the motion control lever with the holes in the control arm shaft and install the bolt and washer removed previously (Figure 1). Hand tighten all fasteners. Repeat this for both controls levers.

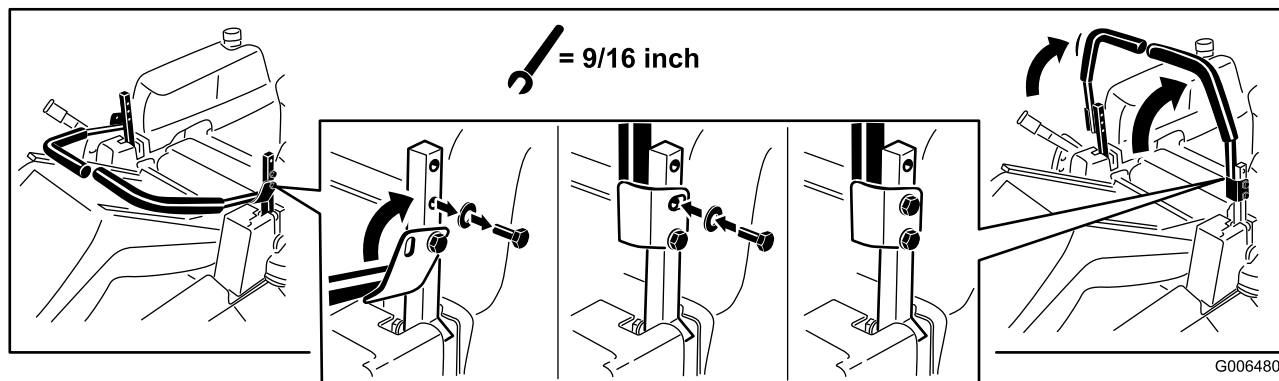


Figure 1

G006480

3. Open the motion control levers and raise the seat (Figure 2). Move the control levers back to the center position (neutral).

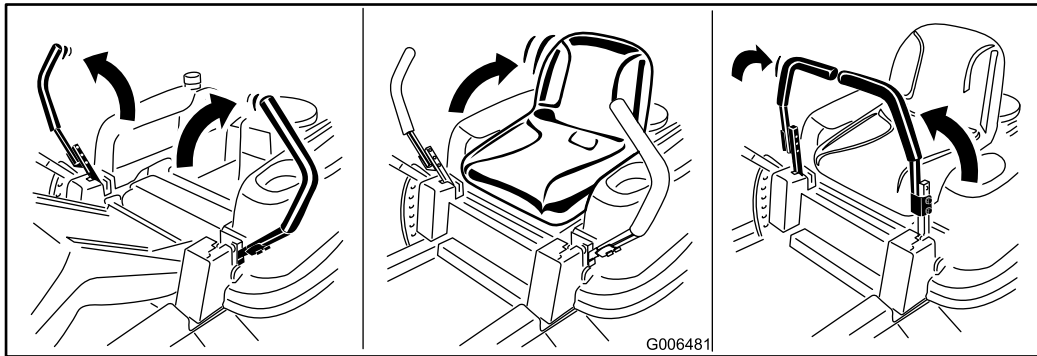


Figure 2

4. Verify the motion control levers are properly aligned (Figure 3). Adjust as necessary. Tighten all fasteners.

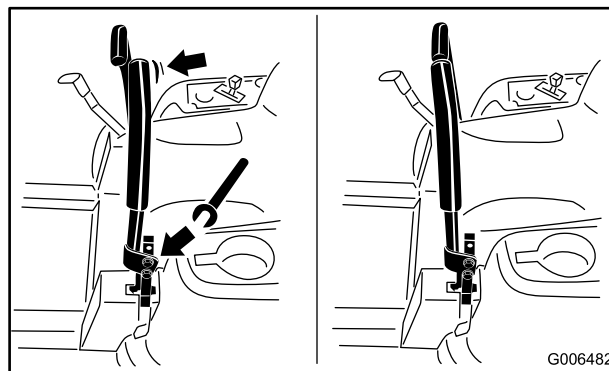


Figure 3

2

Installing the Seat Cable

Parts needed for this procedure:

1	Clevis pin
1	Hair Pin

Procedure

1. Open the motion control levers and raise the seat.
2. Locate the seat cable secured to the frame. Locate the clevis and hair pins installed on the loose end of the seat cable.
3. Secure the loose end of the seat cable to the frame as shown using the clevis and hair pins (Figure 4).

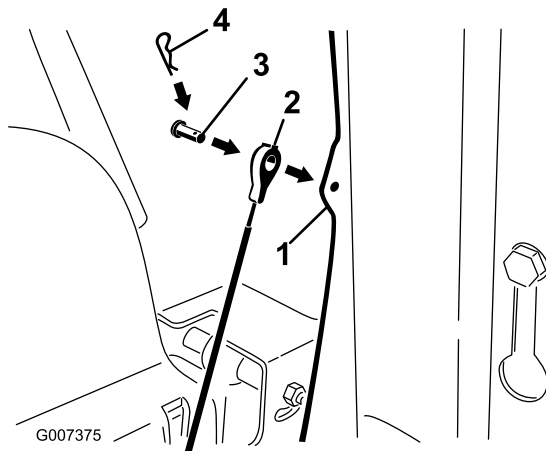


Figure 4

- | | |
|------------------------------------|---------------|
| 1. Seat frame underside, left side | 3. Clevis pin |
| 2. Seat cable | 4. Hair pin |

3

Connecting the Battery

No Parts Required

Procedure

1. Locate the battery and negative battery cable in the left hand console of the machine.
2. Remove the fasteners on the negative battery post and use them to secure the negative battery cable to the negative battery post (Figure 5).

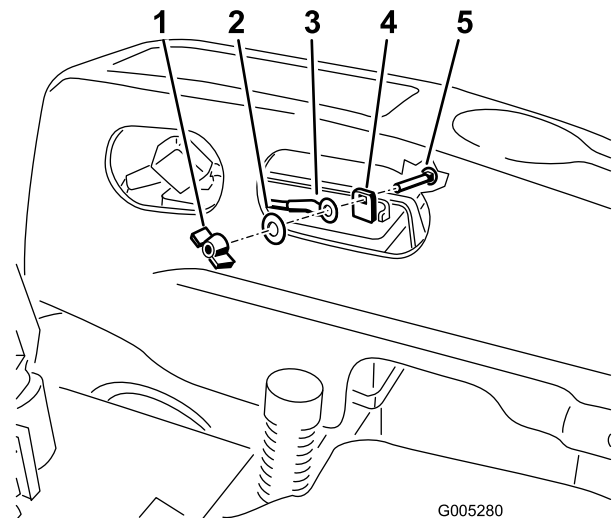


Figure 5

- | | |
|---------------------------|--------------------------|
| 1. Wing nut | 4. Negative battery post |
| 2. Washer | 5. Carriage bolt |
| 3. Negative battery cable | |

3. Lift the seat from the floor board and place it into the operation position.

4

Completing the Setup

Parts needed for this procedure:

1	Ignition Key
1	Hose coupling
1	<i>Operator's Manual</i>
1	<i>Engine Operator's Manual</i>
1	Operator Training Material

Procedure

Checking the Tire Pressure

Check the front and rear tires for proper inflation. Refer to Checking the Tire Pressure in the *Operator's Manual* for the recommended inflation pressure.

Checking the Side Discharge Chute

Remove the packing restraint holding the side discharge chute up and lower the chute into place.

Checking the Engine Oil Level

Before you start the engine and use the machine, check the oil level in the engine crankcase; refer to Checking the Oil Level in the *Operator's Manual*.

Checking the Mower Adjustment

The mower deck was leveled at the factory. If the mower is not cutting level, adjust the side-to-side level and the front-to-rear blade slope. See the Operator's Manual for the proper procedure.

Review the Remaining Parts

Keep all the following items with the machine:

- Ignition Key
- Hose coupling
- *Operator's Manual*
- *Engine Operator's Manual*
- View the Operator training material.