



Replacement Flow Meter Kit for Multi-Pro® 1100 Turf Sprayer Model No. 117-5802

Form No. 3361-781 Rev A

Installation Instructions

Installing the Flowmeter

Park the machine on a level surface and engage the parking brake. Turn the ignition key to Off to stop the engine. Remove the key.



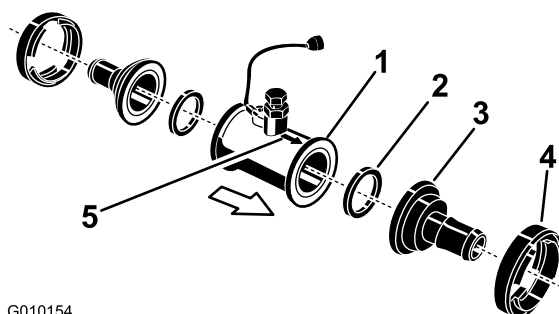
Accidental starting of the engine could seriously injure you or other bystanders.

Remove the key from the ignition switch before you do any maintenance.

1. Locate the existing flowmeter and observe the direction of the flow arrow on the meter. Disconnect the flow meter from the machine wiring harness.
2. Remove the clamps securing the hoses to the existing flowmeter and then remove the flowmeter. Discard the flowmeter.

Note: Take this time to inspect the hoses around the work area for any damage, cracks, leaks or other wear. Replace any damaged parts.

3. Assemble the new flowmeter as shown in Figure 1



G010154

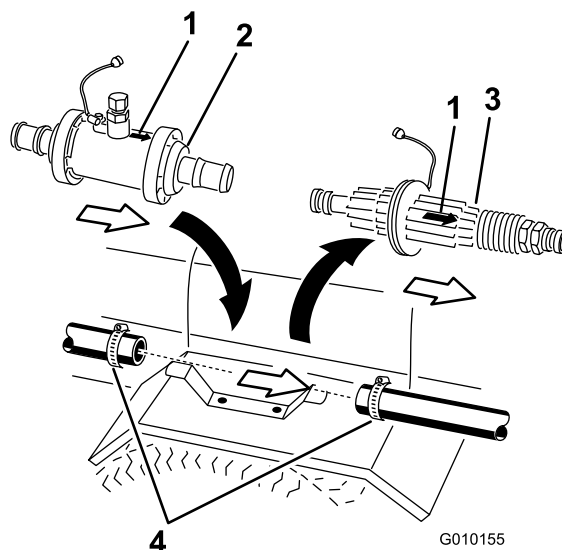
Figure 1

- | | |
|--------------------|---------------|
| 1. Flow meter body | 4. Clamp |
| 2. Gasket | 5. Flow arrow |
| 3. Barb | |

Note: There is an arrow on the meter body that describes the flow direction to aid in installation.

4. Lightly soap or lubricate the barbs of the assembled flow meter and the hoses on the machine to ease installation.
5. Install the flowmeter in the same flow orientation as the previous meter (Figure 2). **Use the flow arrow**

on the meter body to verify it is pointing in the same direction as the previous meter.



G010155

Figure 2

- | | |
|------------------|------------------------------|
| 1. Flow arrow | 3. Existing flowmeter |
| 2. New flowmeter | 4. Existing hoses and clamps |
6. Use the existing hose clamps to secure the meter.
 7. Connect the flow meter to the existing wiring harness on the machine.
 8. Refer to the *Operator's Manual* and literature accompanying the flow meter for proper calibration of the meter and spray system.