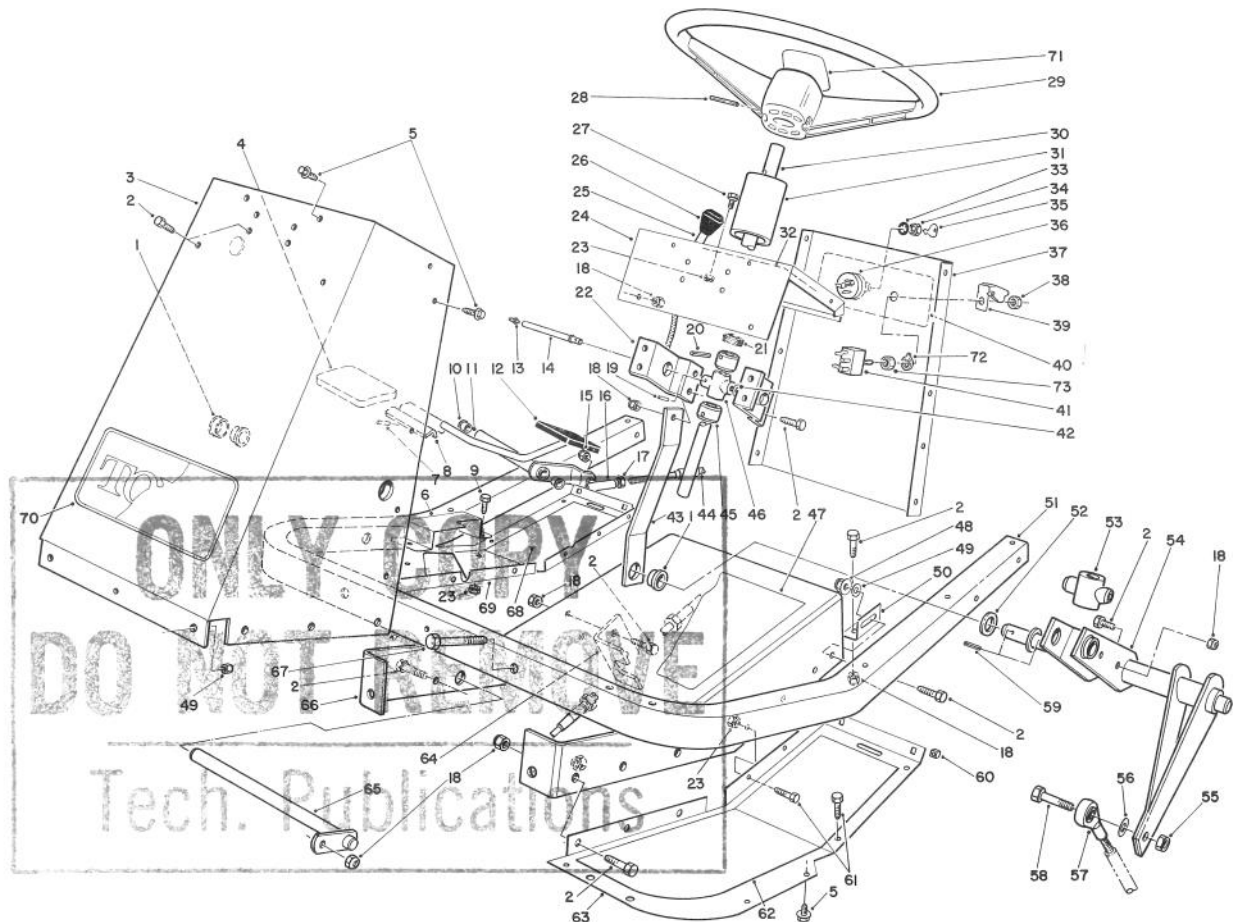




MODEL NO. 30610-490001 & UP

PARTS
CATALOG

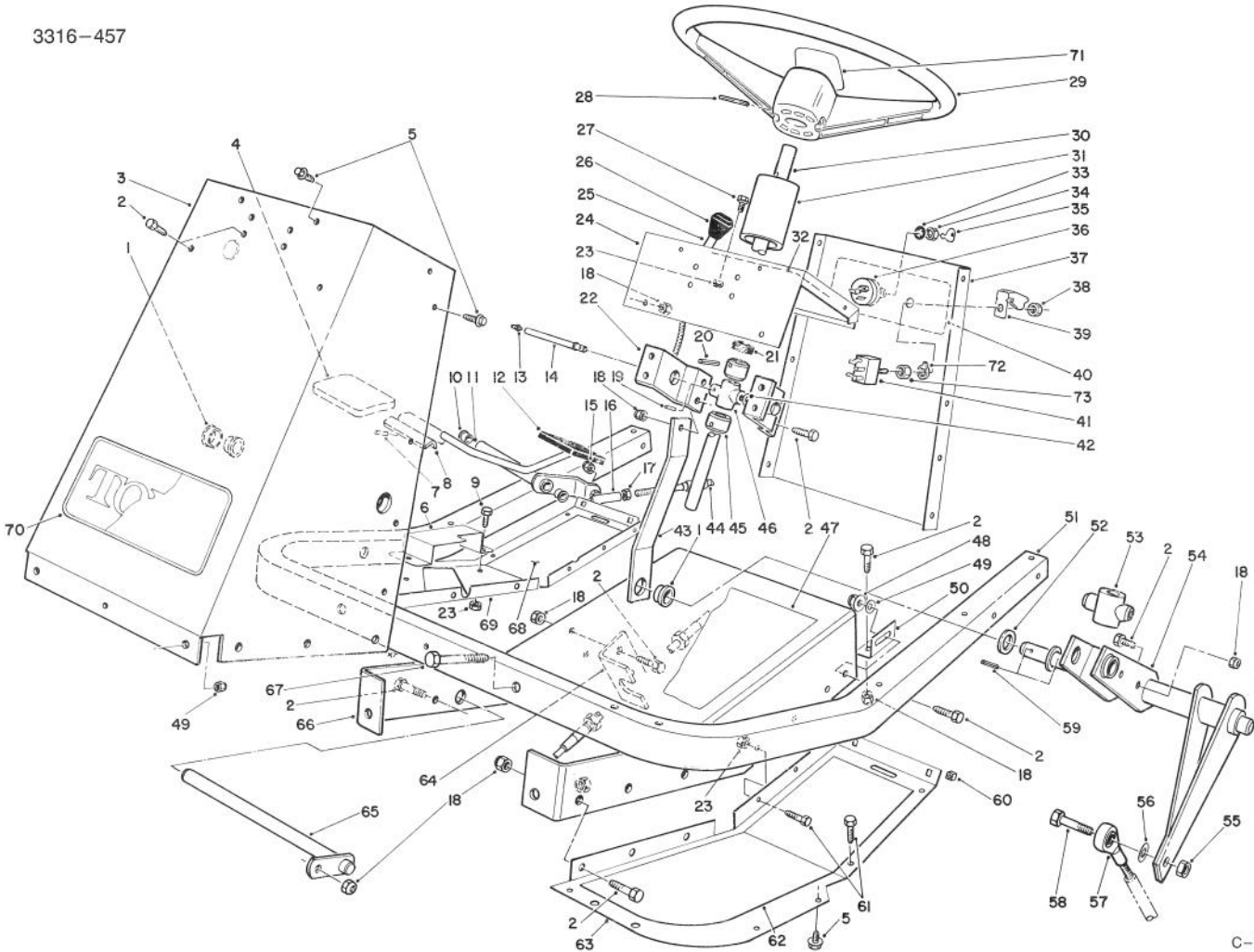
PROLINE 120



C-1626

FRAME & STEERING ASSEMBLY

Ref. No.	Part No.	Description	No. Used	Ref. No.	Part No.	Description	No. Used
1	27-9080	Bushing	3	15	3296-3	Nut - Hex.	1
2	322-4	Screw - Hex. Hd.	19	16	2411-34	Ball Joint	1
3	54-1900	Tower - Front	1	17	3220-1	Nut - Jam	1
4	49-6470	Pad - Accelerator	1	18	3296-29	Nut - Lock	24
5	46-8560	Screw - Hex. Hd.	25	19	32121-20	Pin - Roll	1
6	80-4930	Footrest - Pedal	1	20	32121-31	Pin - Roll	2
7	32121-45	Pin - Roll	1	21	21-9260	Cover - Dust	1
8	80-4920	Pedal - Accelerator	1	22	54-1950	Bracket - Support Bearing	2
9	321-3	Screw - Hex. Hd.	2	23	3296-42	Nut - Lock	16
10	256-156	Bushing	2	24	54-1000	Tower - Top	1
11	74-0110	Pedal - Traction (Incl. Ref. #10)	1	25	54-1451	Control - Throttle, Choke	2
12	49-6430	Pad - Reverse	1	26	66-0120	Knob	2
13	302-22	Fitting - Grease	1	27	321-2	Screw - Hex. Hd.	4
14	59-1610	Tube - Grease Fitting	1	28	32121-10	Pin - Roll	1

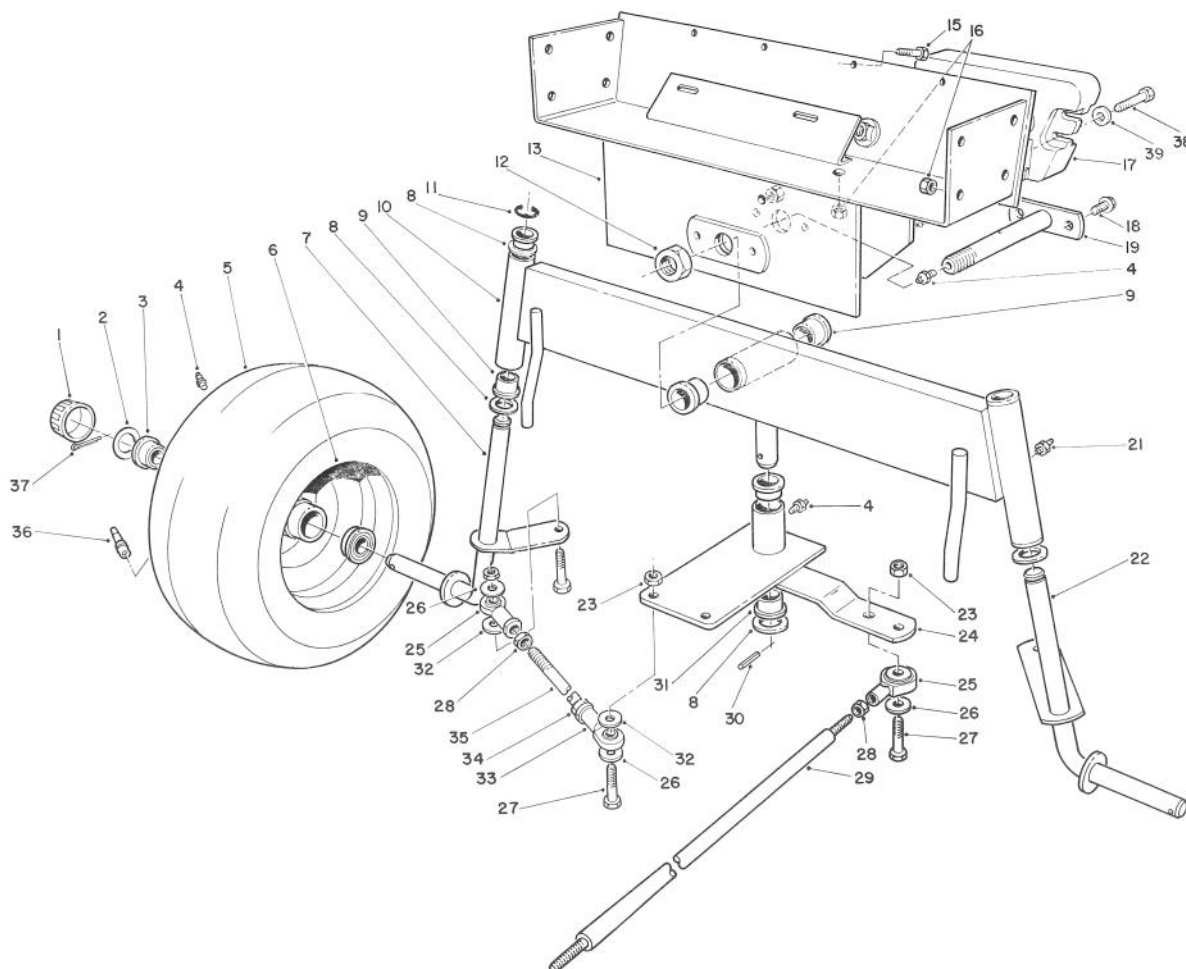


C-1626

FRAME & STEERING ASSEMBLY

Ref. No.	Part No.	Description	No. Used
29	76-1420	Wheel - Steering	1
30	62-6780	Shaft - Steering	1
31	47-1980	Cover Steering Shaft	1
32	92-6278	Decal - Throttle Choke	1
33		Washer - Lock	1
34		Nut - Lock	1
35	63-8360	Key	2
36	88-9830	Switch - Ignition (Incl. Ref. #33-35)	1
37	92-6266	Panel - Tower Rear	1
38	113179	Nut	1
39	113050	Cover - P.T.O. Switch	1
40	92-6277	Decal - Switch	1
41	116716	Switch - Clutch & Brake (Incl. Ref. # 38, 72 & 73)	1
42	3290-440	Washer - Belleville	1
43	54-1340	Link - Steering	1
44	54-2640	Cable - Traction Control	1
45	28-3940	Collar - Steering Shaft	2
46	60-9050	Bearing - Steering Shaft	1
47	54-0880	Decal - Tunnel	1
48	32128-20	Nut - Flange Lock	2
49	3256-23	Washer - Flat	4
50	54-1440	Bracket - Tunnel	2

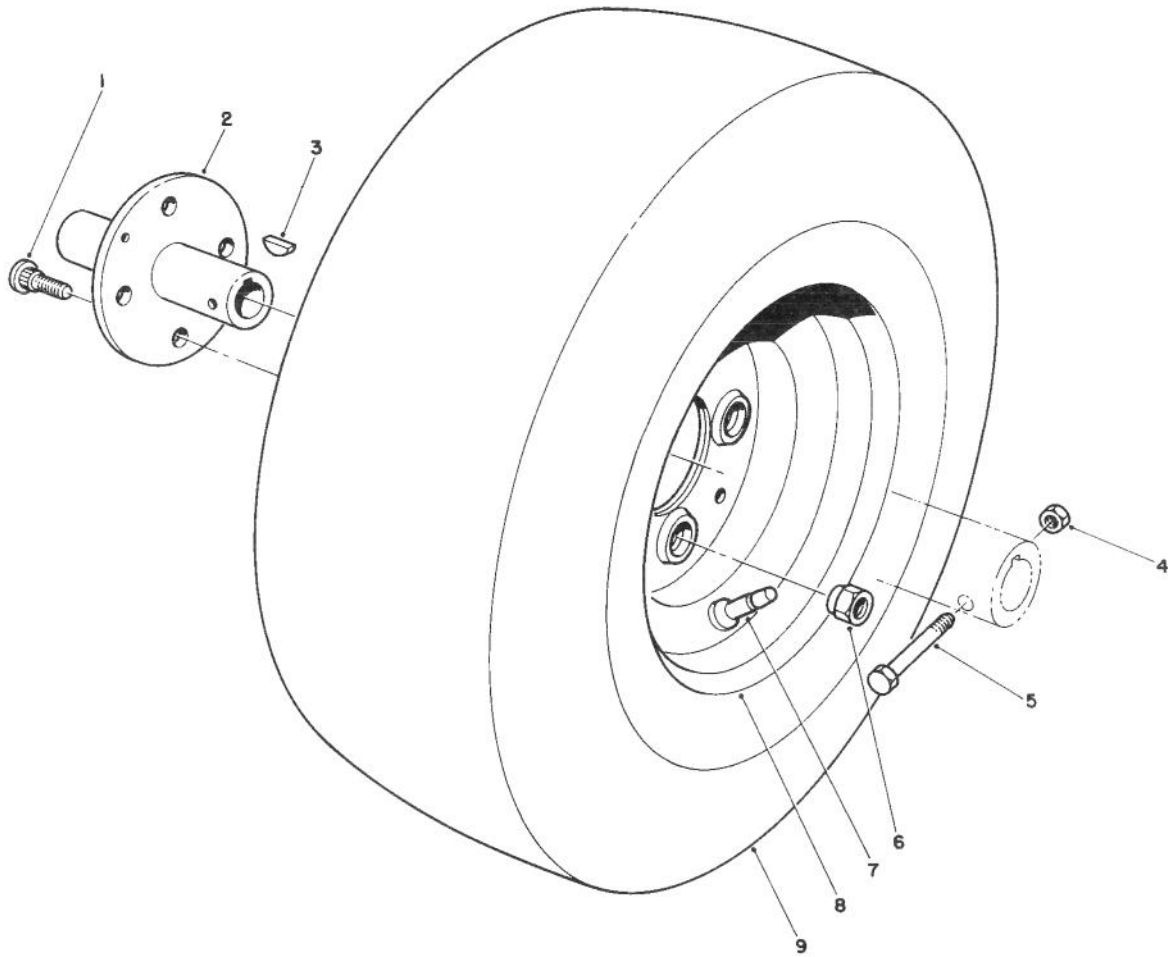
Ref. No.	Part No.	Description	No. Used
51	60-9140	Frame - Footrest	1
52	3-6498	Washer - Thrust	2
53	54-2630	Follower - Steering Shaft	1
54	54-2040	Follower Lever	1
55	32152-9	Nut - Lock	1
56	3256-4	Washer - Flat	1
57	251-304	Rod End	1
58	324-7	Screw - Hex. Hd.	1
59	32121-77	Pin Roll	2
60	32115-5	Nut - Square	4
61	321-4	Screw - Hex. Hd.	14
62	54-2260	Pad Footrest L.H.	1
63	54-1470	Footrest - L.H.	1
64	54-1770	Bracket - Cable Traction	1
65	59-1550	Pedal - Shaft	1
66	60-9150	Tunnel	1
67	322-10	Screw - Hex. Hd.	2
68	54-2270	Pad - Footrest R.H.	1
69	80-4910	Footrest - R.H.	1
70	62-7400	Decal - Toro	1
71	78-0370	Insert - Steering Wheel	1
72	102950	Washer	1
73	105805	Nut	1



C-1627

REAR AXLE ASSEMBLY

Ref. No.	Part No.	Description	No. Used	Ref. No.	Part No.	Description	No. Used
1	61-9780	Hub Cap	2	22	54-0560	Spindle L. H.	1
2	28-2480	Washer - Flat	2	23	32152-9	Nut	5
3	251-210	Bearing - Ball	4	24	92-6257	Plate- Pivot (Incl. Ref. #4 & 30)	1
4	302-5	Fitting - Grease	4	25	251-305	Rod End	3
5	231-126	Tire	2	26	3256-4	Washer - Flat	7
6	242-60	Rim	2	27	324-7	Screw	5
7	54-0570	Spindle R.H.	1	28	3220-4	Nut - Jam	3
8	3-6498	Washer - Thrust	5	29	54-1491	Rod - Steering , Rear	1
9	46-6680	Bushing	6	30	32121-51	Pin - Roll	1
10	92-6255	Axle - Rear (Incl. Ref. #9 & 20)	1	31	27-9080	Bushing	2
11	32151-48	Ring - Retaining	2	32	62-4420	Spacer	9
12	3296-41	Nut - Hex.	1	33	251-304	Rod End	2
13	54-0330	Frame - Rear	1	34	3220-19	Nut - Jam	2
15	321-4	Screw	4	35	57-3100	Tie Rod - Steering	2
16	3296-29	Nut	8	36	232-27	Valve Stem w/Cap	2
17	24-5790	Weight - Rear	1	37	3272-12	Pin - Cotter	2
18	32144-15	Screw	2	38	325-6	Screw	2
19	59-1500	Pivot - Axle	1	39	3253-7	Washer	2
21	302-49	Fitting - Grease	3				

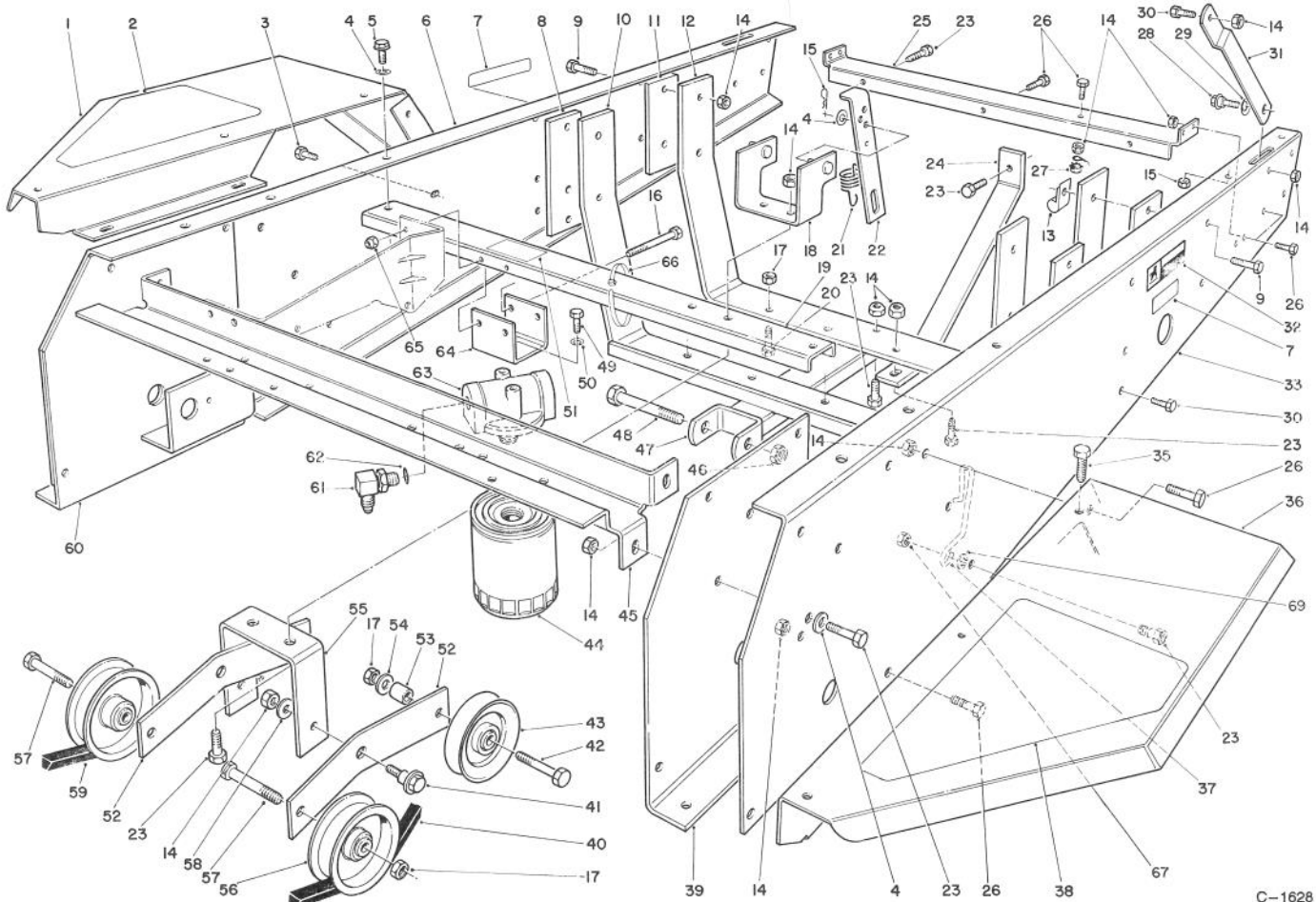


T-0071

FRONT WHEEL ASSEMBLY

Ref. No.	Part No.	Description	No. Used
1	242-71	Bolt - Wheel	8
2	54-0140	Hub - Wheel	2
3	3257-10	Key - Woodruff	2
4	3296-29	Nut - Lock	2
5	322-10	Screw	2

Ref. No.	Part No.	Description	No. Used
6	242-50	Nut	8
7	232-27	Valve Stem w/Cap	2
8	242-76	Rim	2
9	231-122	Tire	2

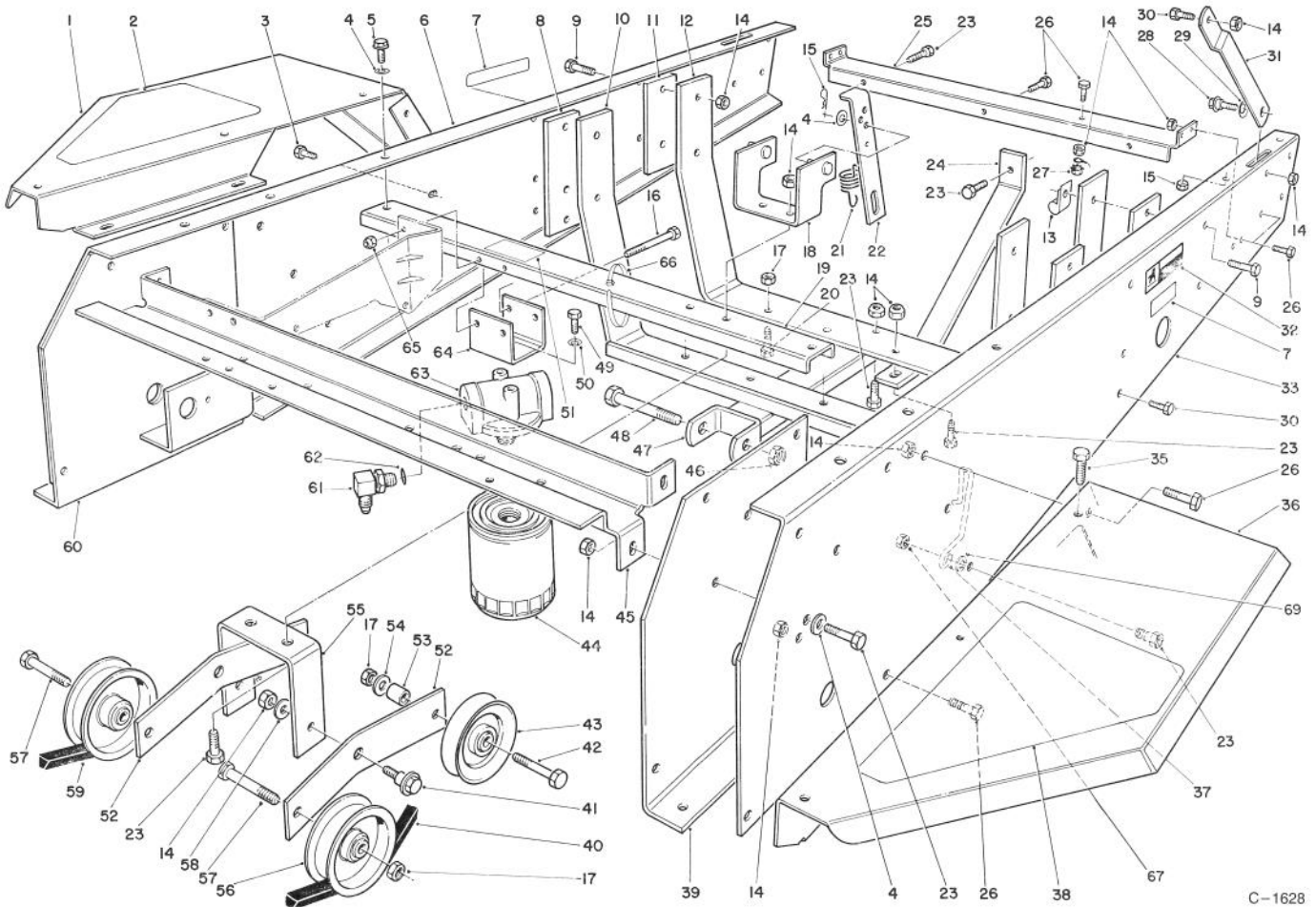


C-1628

FRAME & JACKSHAFT ASSEMBLY

Ref. No.	Part No.	Description	No. Used
1	54-1930	Fender R.H.	1
2	92-6292	Pad - Fender R.H.	1
3	3234-14	Screw	4
4	3256-23	Washer - Flat	8
5	32144-11	Screw - Thread Forming	2
6	54-1910	Channel - Side R.H.	1
7	77-3100	Decal - Caution	2
8	54-1800	Plate - Engine Front	2
9	322-6	Screw	8
10	92-6250	Mount - Engine	1
11	54-1810	Plate - Engine, Rear	2
12	92-6251	Mount - Engine	1
13	2412-100	"J" Clamp	2
14	3296-29	Nut	33
15	3290-250	Pin - Cotter	2
16	321-14	Screw	2
17	3296-44	Nut	6
18	54-2070	Anchor - Spring	1
19	54-2500	Channel - Middle	1
20	323-7	Screw	3
21	54-1410	Spring - Idler	2
22	54-1130	Link - Idler Anchor	2

Ref. No.	Part No.	Description	No. Used
23	322-6	Screw	11
24	92-6254	Bar - Tension	1
25	54-1830	Support - Shield	1
26	322-4	Screw	13
27	32149-1	Nut - Lock	1
28	27-0410	Bolt - Shoulder	2
29	3290-211	Washer - Spring	2
30	322-2	Screw	4
31	54-1870	Stop - Hood, Lower	2
32	54-0910	Decal - Warning	1
33	54-1920	Channel - Side L.H.	1
35	46-8560	Screw	6
36	54-1940	Fender L.H.	1
37	55-4860	Guide - Belt	1
38	92-6293	Pad - Fender L.H.	1
39	54-0460	Axle Stand - L.H.	1
40	54-1380	JackShaft - "V" Belt	1
41	19-1470	Bolt - Shoulder	2
42	323-11	Screw	2
43	62-4530	Idler - "V" Belt	2
44	54-0110	Filter - Transmission Oil	1
45	54-1010	Channel - Front	1

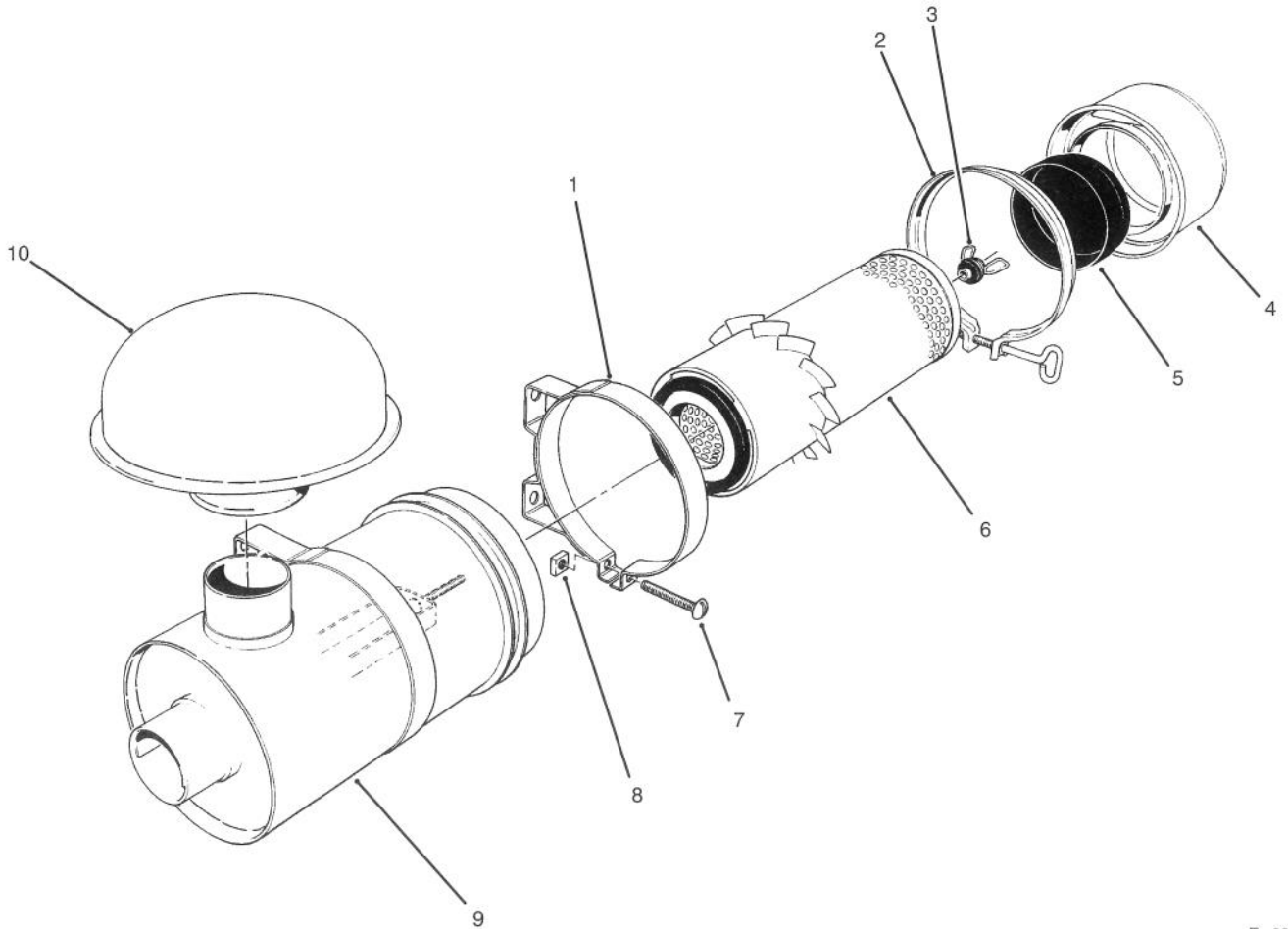


C-1628

FRAME & JACKSHAFT ASSEMBLY (Continued)

Ref. No.	Part No.	Description	No. Used
46	3296-61	Nut	1
47	92-6252	Mount - Cylinder	1
48	327-24	Screw	1
49	321-3	Screw	2
50	3253-3	Washer - Lock	2
51	53-4430	Decal - Oil	1
52	54-9200	Lever - Idler	2
53	37-7250	Spacer	2
54	3256-3	Washer - Flat	2
55	54-1060	Bracket - Idler Mount	1
56	62-4540	Idler - Flat	2
57	323-9	Screw	2

Ref. No.	Part No.	Description	No. Used
58	23-1120	Washer - Flat	2
59	54-1390	"V" Belt - Traction	1
60	54-0450	Axle Stand R.H.	1
61	353-371	Fitting - 90°	2
62	237-79	"O" Ring	1
63	54-0100	Filter Head Assembly	1
64	54-1120	Bracket - Filter Head	1
65	3296-42	Nut - Lock	2
66	3290-379	Cable Tie	7
67	32128-20	Nut - Flange Lock	1
69	3255-8	Washer - Lock, Ext. Tooth	1

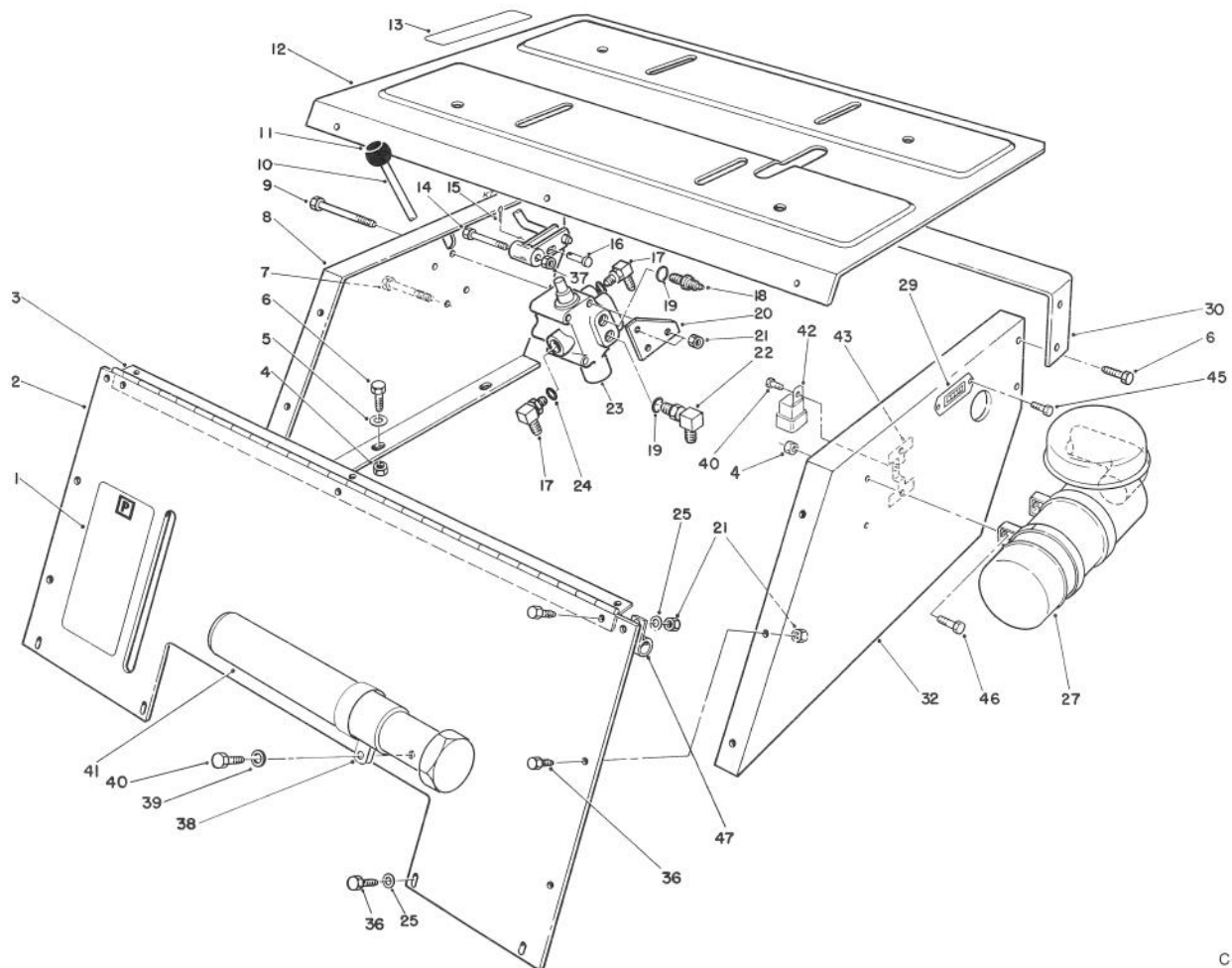


T-0248

AIR CLEANER, MODEL NO. 11-4659

Ref. No.	Part No.	Description	No. Used
1	33-1350	Band Assembly (Incl. Ref. #7 & 8)	2
2	33-1340	Clamp Assembly	1
3	33-1330	Nut Assembly	1
4	33-1320	Cup	1
5	33-1310	Baffle	1

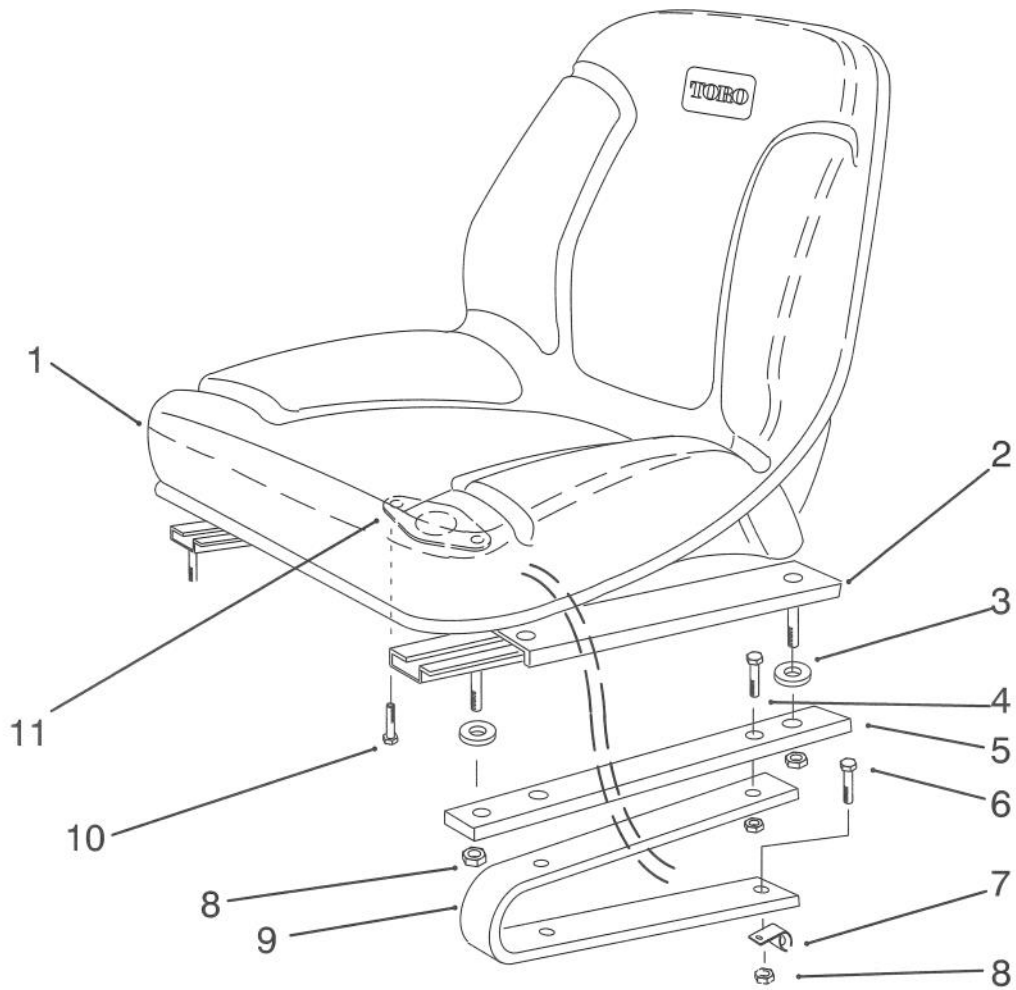
Ref. No.	Part No.	Description	No. Used
6	33-1300	Element Assembly	1
7	3258-19	Screw - Round Hd.	2
8	32107-11	Nut - Square	2
9		Body Assembly	1
10	46-7510	Hood - Intake	1



C-1629

SEAT SUPPORT ASSEMBLY

Ref. No.	Part No.	Description	No. Used	Ref. No.	Part No.	Description	No. Used
1	54-0920	Decal - Parking Brake	2	21	3296-42	Nut - Lock	19
2	80-3760	Support - Seat, Front	1	22	353-375	Fitting - 90°	1
3	54-3110	Hinge - Seat	1	23	54-0090	Valve Assembly	1
4	3296-29	Nut	12	24	237-42	"O"Ring	2
5	3256-23	Washer - Flat	6	25	3256-1	Washer - Flat	10
6	322-4	Screw	8	27	11-4659	Air Cleaner Assembly	1
7	321-14	Screw	2	29	75-6820	Meter - Hour	1
8	54-1220	Support - Seat R.H.	1	30	54-1550	Support - Hood	1
9	321-23	Screw	2	32	92-5435	Support - Seat L.H.	1
10	82-4680	Lever - Valve	1	36	321-4	Screw	5
11	233-37	Knob	1	37	3296-39	Nut	1
12	92-6281	Plate - Seat	1	38	2412-120	"R"Clamp	2
13	54-0900	Decal - Lift Control	1	39	3256-51	Washer	2
14	56-6590	Screw	1	40	32104-76	Screw	4
15	3272-6	Pin - Cotter	1	41	74-0720	Tube - Manual	1
16	283-17	Pin - Clevis	1	42	63-7590	Relay	1
17	353-511	Fitting	2	43	92-6259	Bracket	1
18	353-545	Fitting	1	45	32144-18	Screw	2
19	237-78	"O"Ring	2	46	322-4	Screw	4
20	82-4700	Bracket - Lever, Valve	1	47	2412-93	Clamp - Wire	1

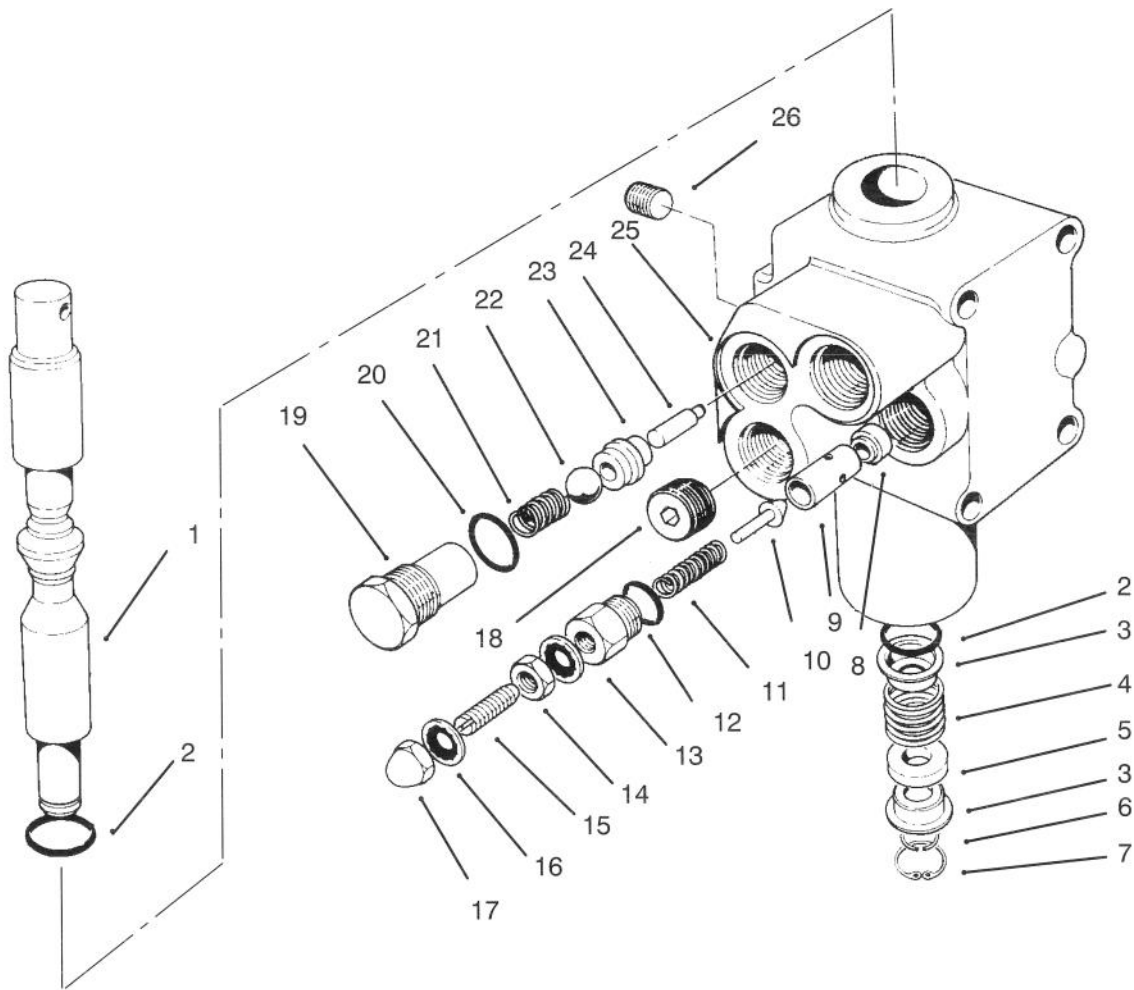


C-1603

SEAT ASSEMBLY

Ref. No.	Part No.	Description	No. Used
1	92-6280	Seat	1
2	51-0790	Slide Seat Adjust Assembly	1
*	51-0780	Slide Seat Assembly R.H.	1
3	109989	Spacer	4
4	322-4	Screw	4
5	92-6284	Plate - Adapter, Seat	2

Ref. No.	Part No.	Description	No. Used
6	322-5	Screw	4
7	2412-93	Clamp	1
8	3296-29	Nut - Lock	8
9	114263	Spring - Seat	2
10	321-4	Screw	2
11	92-6282	Switch - Seat	1

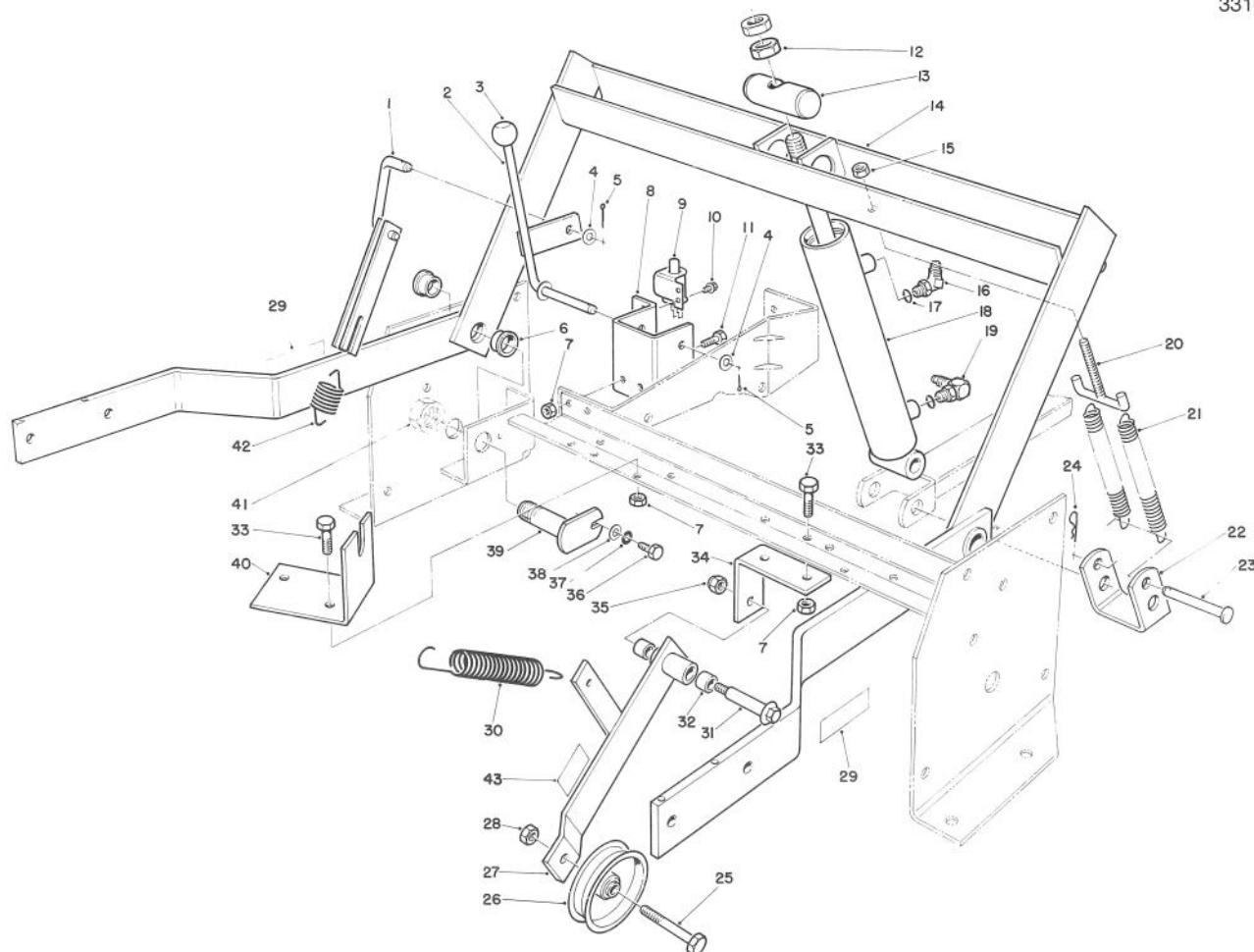


T-0075

VALVE ASSEMBLY NO. 54-0090

Ref. No.	Part No.	Description	No. Used
1	54-0260	Spool	1
2	22-8500	"O"Ring	2
3	22-8380	Retainer - Spring	2
4	22-8410	Spring	1
5	27-5200	Spacer	1
6	22-8480	Ring - Retaining	1
7	22-8490	Ring - Retaining	1
8	55-3640	Seat - Relief	1
9		Guide	1
10		Plunger	1
11		Spring	1
12		"O"Ring	1
13		Cap - PV Adjustment	1
14		Nut	1

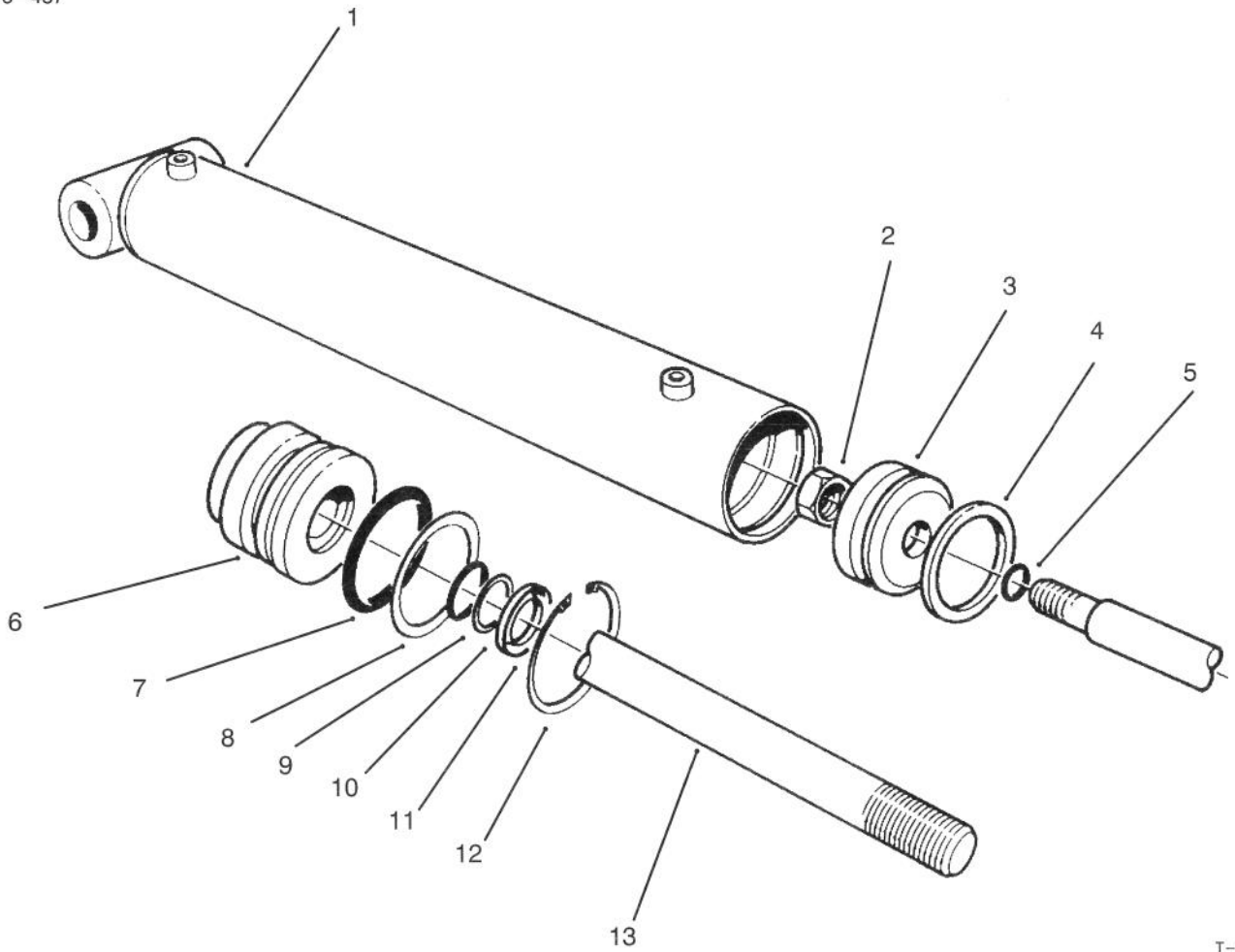
Ref. No.	Part No.	Description	No. Used
15		Screw - Set	1
16		Stat O Seal	1
17		Nut - Acorn	1
18	28-1120	Plug	1
19	22-8330	Plug	1
20	237-42	"O"Ring	2
21	22-8340	Spring	1
22	22-8350	Ball	1
23	22-8370	Seat - Check Valve	1
24	22-8360	Pin - Cam	1
25		Body	1
26	55-3650	Plug	1
*	55-3630	Adjustable Relief Valve (Incl. Ref. #9-17)	1



T-0076

PARKING BRAKE & LIFT FRAME ASSEMBLY

Ref. No.	Part No.	Description	No. Used	Ref. No.	Part No.	Description	No. Used
1	54-2120	Link - Parking Brake	1	23	283-55	Pin - Clevis	1
2	54-2110	Lever - Brake	1	24	3290-355	Pin - Cotter	1
3	233-37	Knob	1	25	323-10	Screw	1
4	3256-24	Washer - Flat	2	26	36-3220	Pulley - Idler	1
5	3272-10	Pin - Cotter	2	27	12-1109	Lever - Idler (Incl. Ref. #43)	1
6	27-9080	Bushing	4	28	3296-44	Nut	1
7	3296-29	Nut	6	29	61-3610	Decal - Warning	2
8	54-1270	Bracket - Parking Brake	1	30	54-1170	Spring - Extension	1
9	55-7120	Switch - Brake	1	31	27-6230	Bolt - Shoulder	1
10	32144-1	Screw - Thread Forming	2	32	256-154	Bushing	2
11	322-6	Screw	2	33	322-4	Screw	4
12	3220-6	Nut - Jam	2	34	55-7310	Bracket - Idler	1
13	54-2000	Pin - Pivot	1	35	3296-6	Nut	1
14	66-1570	Frame - Lift (Incl. Ref. #6)	1	36	321-2	Screw	2
15	32153-3	Nut	2	37	3253-3	Washer	2
16	353-431	Fitting - 45°	1	38	3256-1	Washer	2
17	237-78	"O" Ring	2	39	54-2100	Pin - Pivot	2
18	54-0150	Cylinder - Lift	1	40	56-6920	Bracket - Cable Extension	1
19	353-375	Fitting - 90°	1	41	3296-15	Nut	2
20	56-3320	"T" Hook	1	42	54-0960	Spring - Parking Brake	1
21	56-2760	Spring - Extension	2	43	55-4300	Decal	1
22	56-3370	Bracket - Spring	2				

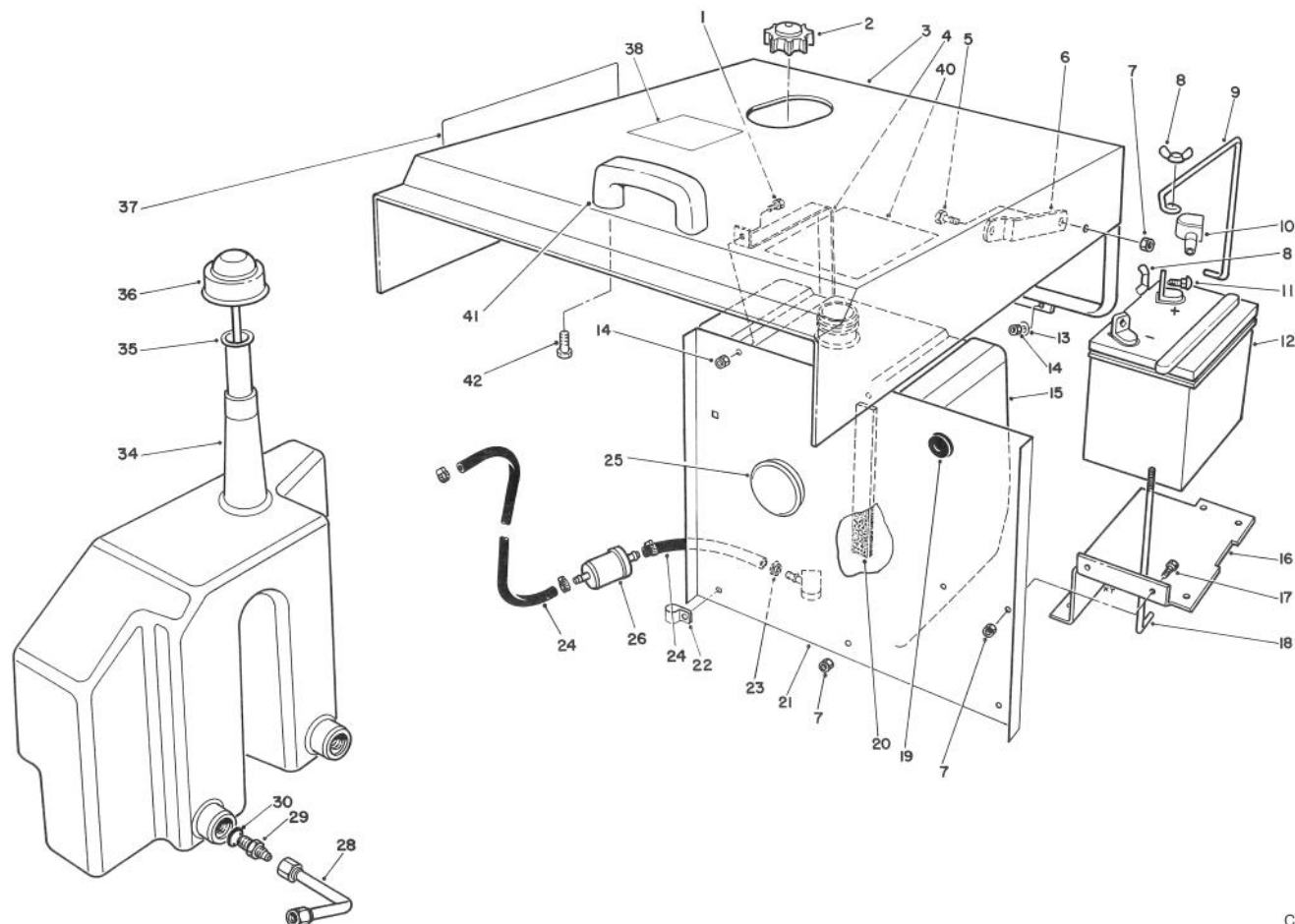


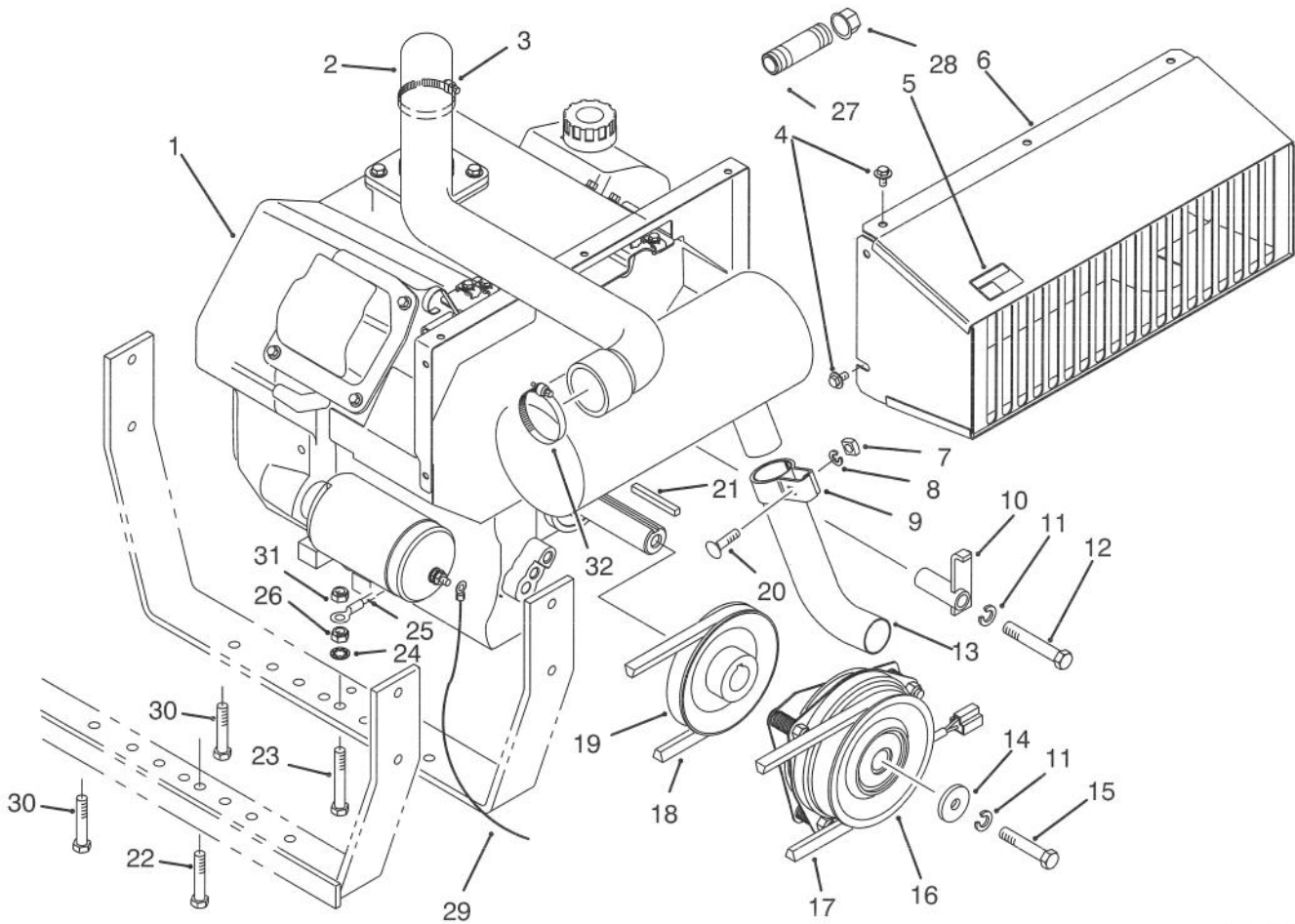
T-0077

HYDRAULIC LIFT CYLINDER NO. 54-0150

Ref. No.	Part No.	Description	No. Used
1†		Barrel	1
2	32152-10	Nut - Lock	1
3	54-0300	Piston	1
4		Uniring	1
5		"O"Ring	1
6	54-0310	Head	1
7		"O"Ring	1
8		Washer - Backup	1

Ref. No.	Part No.	Description	No. Used
9		"O"Ring	1
10		Washer - Backup	1
11		Seal - Dust	1
12	43-5220	Ring - Retaining	1
13	54-0280	Shaft	1
*	54-0290	Seal Repair Kit (Incl. Ref. #4, 5 & 7-11)	1





C-1606

ENGINE ASSEMBLY

Ref. No.	Part No.	Description	No. Used
1	92-6275	Engine - Kohler 20 HP Model No. CH20QS	1
2	92-6265	Hose - Intake	1
3	2412-3	Clamp - Hose	2
4	48-7610	Screw	5
5	63-8440	Decal - Hot Surface	1
6	92-6260	Duct - Engine	1
7	3217-6	Nut - Square	1
8	3253-4	Washer - Lock	1
9	55-8660	Assembly - Clamp (Incl. Ref. #7, 8 & 20)	1
10	54-2160	Bracket - Anchor	2
11	3253-6	Washer - Lock	1
12	324-11	Screw - Hex. Hd.	1
13	54-2290	Pipe - Exhaust	1
14	44-8160	Washer - Flat	1
15	3212-24	Screw - Hex. Hd.	1

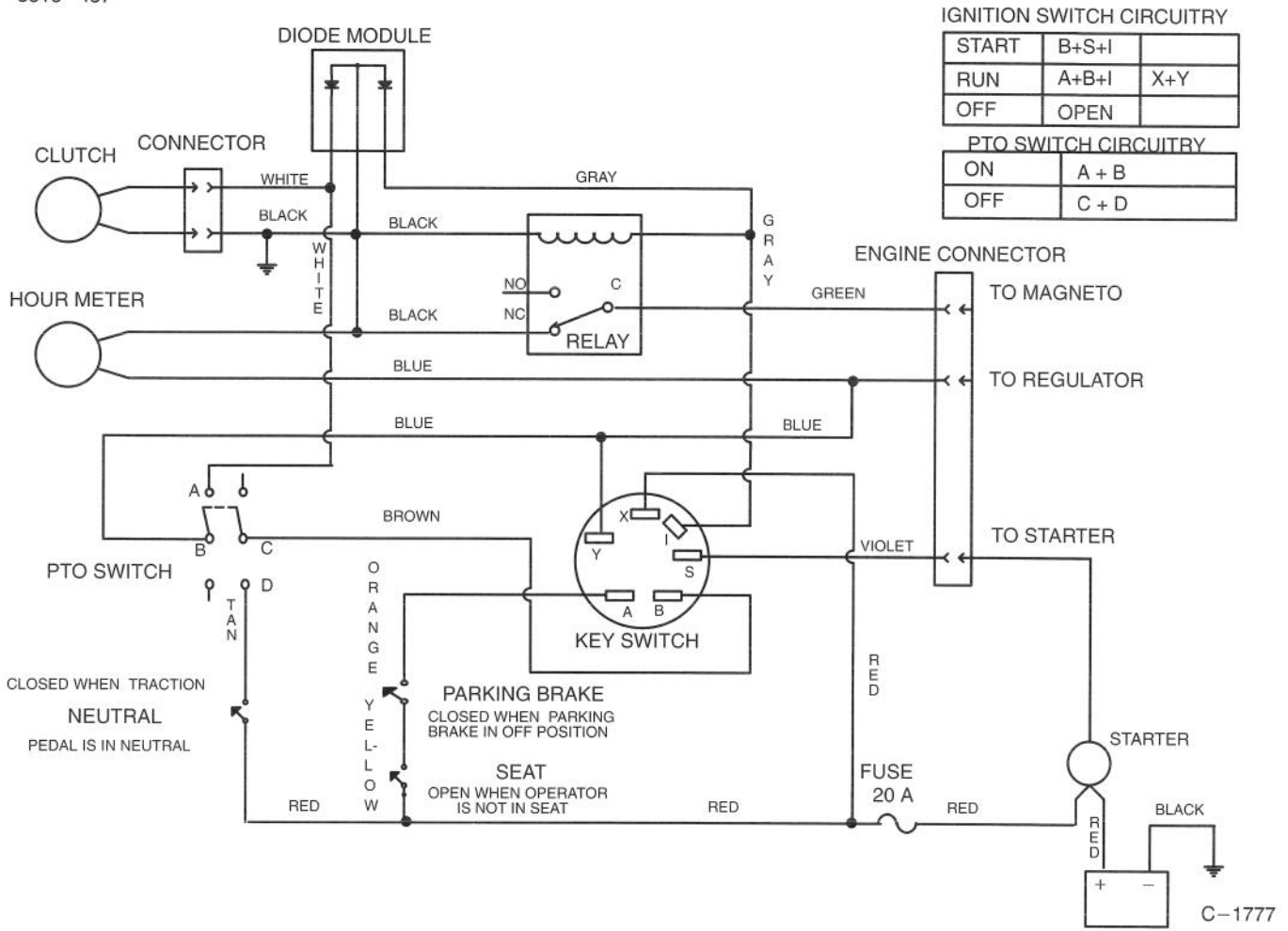
Ref. No.	Part No.	Description	No. Used
16	54-0220	Assembly - Clutch	1
17	54-1380	V-Belt	1
18	54-1390	V-Belt	1
19	54-2330	Pulley - Engine	1
20	3230-3	Bolt - Carriage	1
21	5-0930	Key	1
22	323-10	Screw - Hex. Hd.	1
23	323-12	Screw - Hex. Hd.	1
24	3254-6	Washer - Lock, Int. Tooth	1
25	92-6287	Wire - Ground	1
26	3296-44	Nut - Lock	4
27	289-46	Nipple - Pipe	1
28	288-10	Cap - Pipe	1
29	28-3894	Wire - -Positive	1
30	323-9	Screw	2
31	3290-357	Nut - Wizz	1
32	2412-92	Clamp - Hose	1



T-0080

CLUTCH ASSEMBLY NO. 54-0220

Ref. No.	Part No.	Description	No. Used	Ref. No.	Part No.	Description	No. Used
1	54-0230	Field Assembly (Incl. Ref. #2 & 3)	1	6	44-8330	Spacer - Bearing	1
2	251-292	Bearing - Field	1	7	44-8340	Collar - Bearing	1
3	44-8310	Ring - Retaining	2	8	251-291	Bearing - Pulley	1
4	44-8360	Field Coil, Rotor & Bearing (Incl. Ref. #1)	1	9	3296-6	Nut - Lock	3
5	44-8370	Armature & Pulley Assembly (Incl. Ref. #3, 6, 7 & 8)	1	10	44-8320	Spring	3

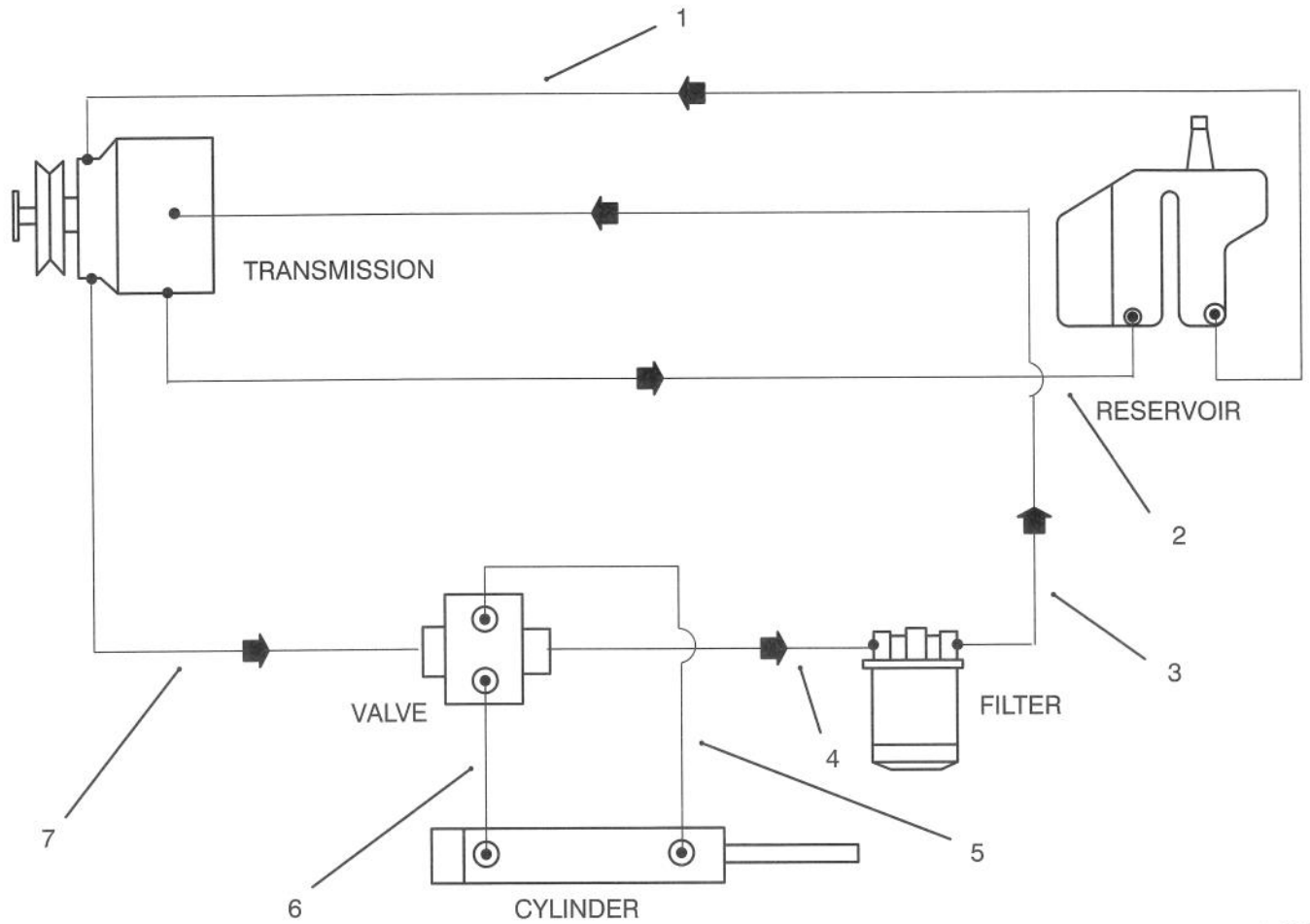


ELECTRIC SCHEMATIC

Ref. No.	Part No.	Description	No. Used
*	92-6279	Harness - Wire	1

Ref. No.	Part No.	Description	No. Used

*Not Illustrated

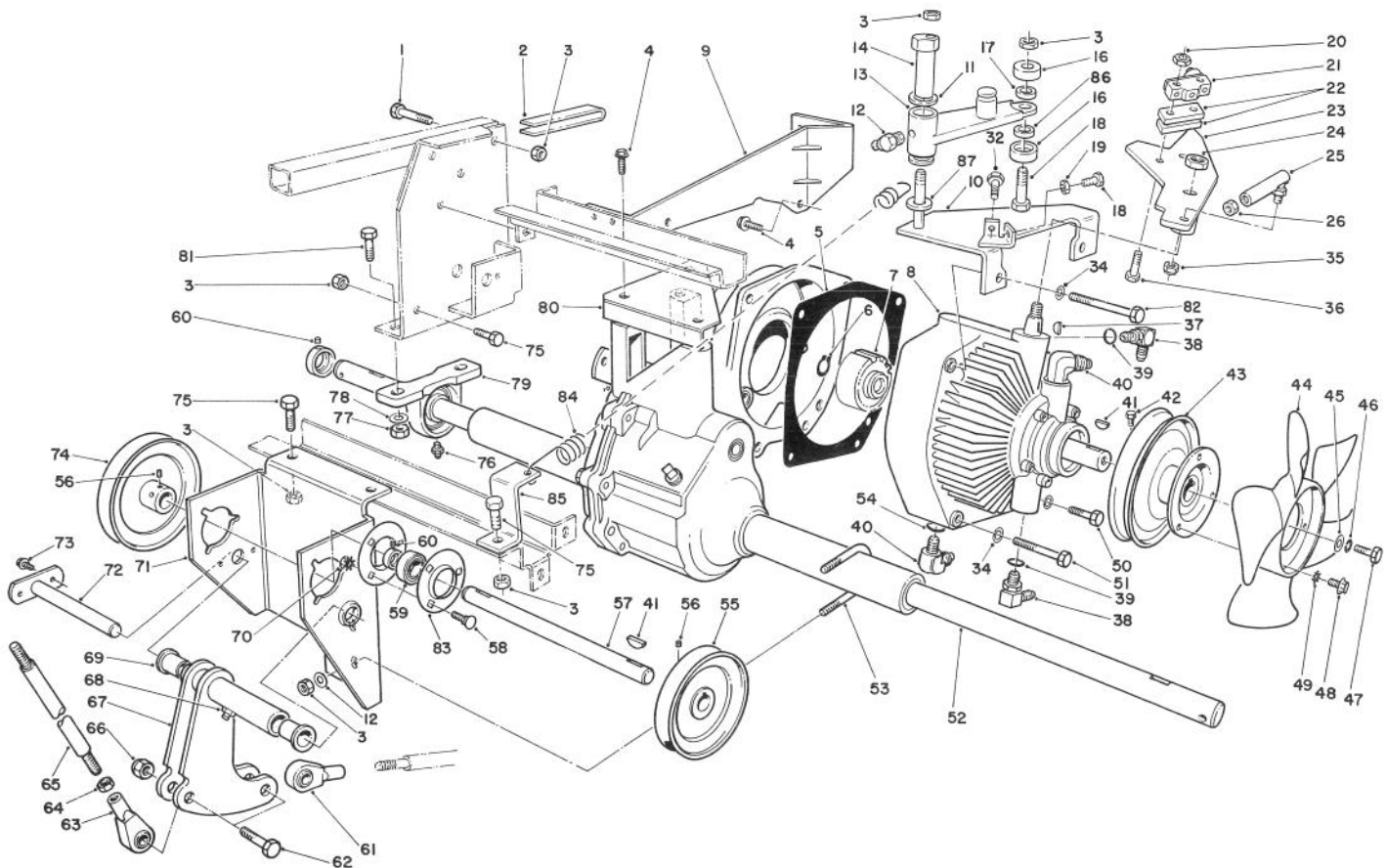


T-0084

HYDRAULIC SCHEMATIC

Ref. No.	Part No.	Description	No. Used
1	56-3390	Hydraulic Hose Assembly Reservoir to Transmission	1
2	54-2310	Hydraulic Tube Assembly	1
3	54-2580	Hydraulic Hose Assembly Filter to Transmission	1
4	54-2570	Hydraulic Hose Assembly Valve to Filter	1

Ref. No.	Part No.	Description	No. Used
5	54-2610	Hydraulic Hose Assembly Cylinder to Valve	1
6	54-2620	Hydraulic Hose Assembly Cylinder to Valve	1
7	54-2590	Hydraulic Hose Assembly Transmission to Valve	1



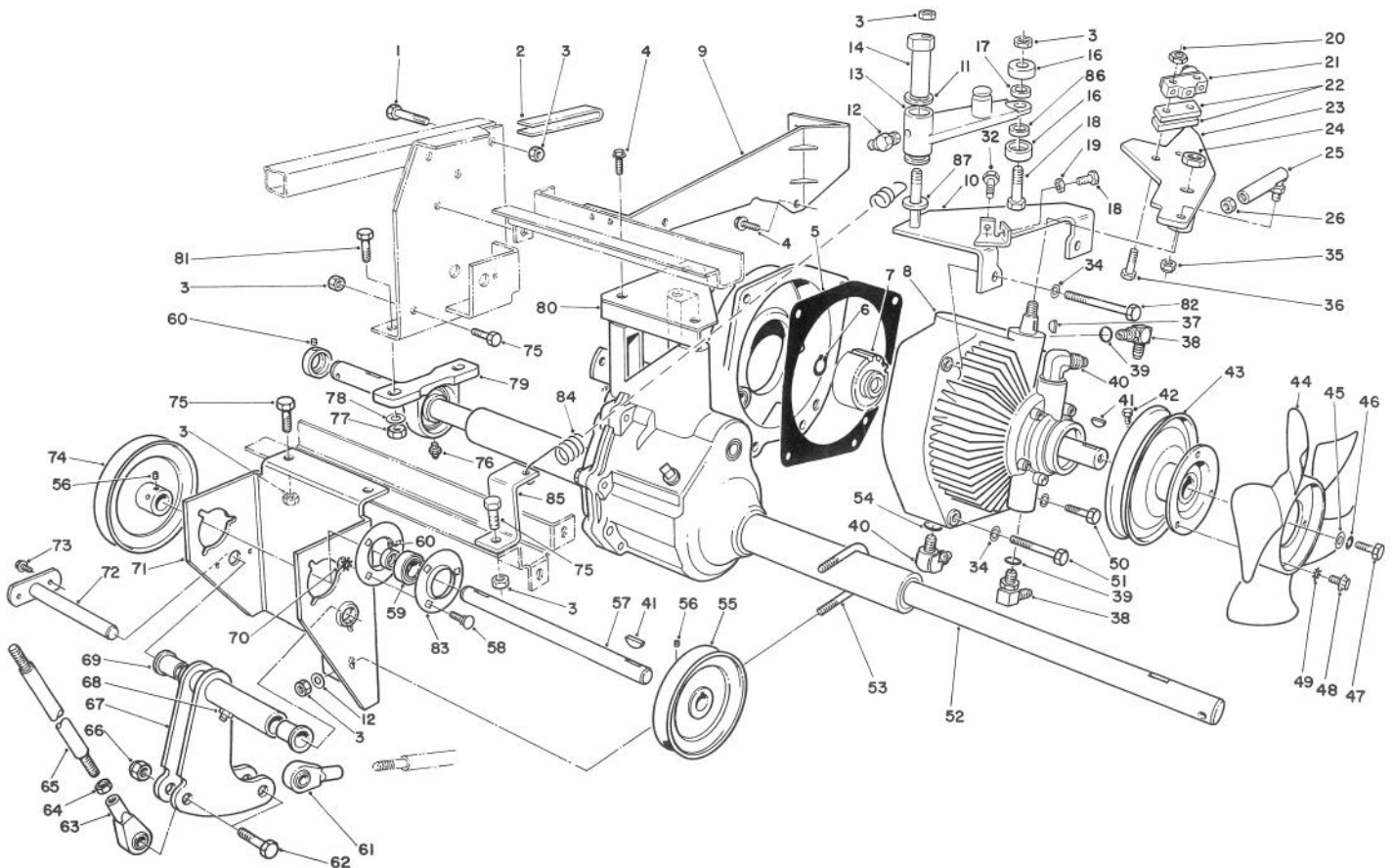
C-1631

TRANSMISSION & DIFFERENTIAL ASSEMBLY

Ref. No.	Part No.	Description	No. Used
1	322-11	Screw - Hex. Hd.	4
2	80-3750	Spacer	2
3	3296-29	Nut - Lock	16
4	3234-1	Screw - Hex. Flange Hd.	5
5	55-4320	Gasket	1
6	32120-64	Ring - Snap	1
7	54-0320	Gear	1
8	54-0080	Transmission - Hydrostatic	1
9	59-1620	Bracket - Transaxle	1
10	92-6270	Plate - Traction	1
11	3-6498	Washer	1
12	302-60	Fitting - Grease 90°	
13	92-6289	Swing Arm Assembly	
	*	(Incl. 256-113 Bushings (2))	1
14	76-8640	Stud - Traction	1
16	251-307	Bearing	2
17	75-5470	Spacer Bearing	1
18	322-7	Screw - Hex. Hd.	1
19	3217-6	Nut	4
20	3296-9	Nut	2
21	29-6163	Switch	1
22	75-4130	Spacer	2

Ref. No.	Part No.	Description	No. Used
23	92-6269	Lever - Traction	2
24	3296-25	Nut	1
25	2411-34	Joint - Ball	1
26	3220-1	Nut - Hex. Jam	1
32	322-6	Screw - Hex. Hd.	2
34	3253-5	Washer - Lock	4
35	3296-3	Nut - Lock	1
36	3250-46	Screw	2
37	3257-24	Key - Woodruff	1
38	353-511	Fitting - Hydraulic 90° (Incl. Ref. #39)	2
39	237-79	"O" Ring	2
40	353-370	Fitting - Hydraulic 90° (Incl. Ref. #54)	2
41	3257-5	Key - Woodruff	3
42	3241-2	Screw - Set	2
43	54-0930	Pulley - Transmission	1
44	54-0240	Fan	1
45	3256-55	Washer	1
46	3253-3	Washer - Lock	1
47	321-2	Screw - Hex. Hd.	1
48	32144-19	Screw - Round Hd.	3

*Not Illustrated

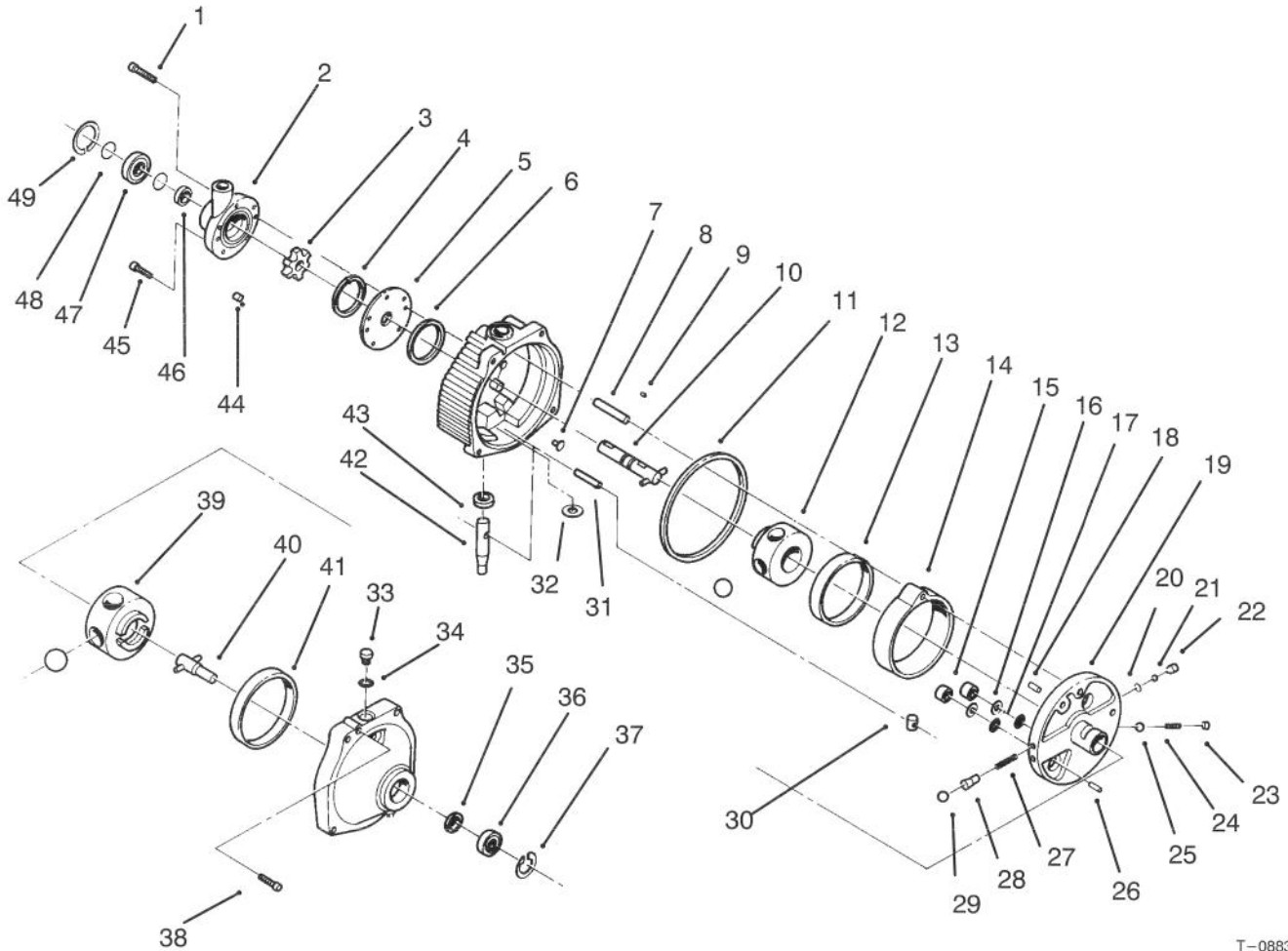


C-1631

TRANSMISSION & DIFFERENTIAL ASSEMBLY (Continued)

Ref. No.	Part No.	Description	No. Used
49	3255-5	Washer - Lock	3
50	323-13	Screw - Hex. Hd.	1
51	323-16	Screw - Hex. Hd.	1
52	13-5969	Differential Assembly	1
53	54-8970	"U" Bolt	1
54	237-80	"O" Ring	2
55	54-2380	Pulley - Input	1
56	3241-1	Screw - Set	4
57	54-1600	Jackshaft	1
58	3230-1	Bolt - Carriage	6
59	251-288	Bearing w/Collar	2
60	3245-35	Screw - Set	4
61	251-304	Rod End	1
62	324-7	Screw - Hex. Hd.	2
63	251-305	Rod End	1
64	3220-4	Nut - Hex. Jam	2
65	54-1490	Rod - Steering	1
66	32152-9	Nut - Lock	2
67	54-2060	Bellcrank Assembly (Incl. Ref. #68 & 69)	1

Ref. No.	Part No.	Description	No. Used
68	302-49	Fitting - Grease	1
69	46-6680	Bushing - Flanged	2
70	32149-1	Nut - Lock	6
71	60-9130	Bracket - Jackshaft	1
72	59-1470	Shaft - Bellcrank	1
73	46-8560	Screw - Thread Forming	2
74	54-2390	Pulley - Output	1
75	322-4	Screw - Hex. Hd.	6
76	302-2	Fitting - Grease	2
77	33296-44	Nut - Lock	4
78	3256-3	Washer - Flat	4
79	72-4060	Bearing Assembly	2
80	60-8990	Plate - Transaxle	1
81	323-8	Screw - Hex. Hd.	4
82	323-14	Screw - Hex. Hd.	2
83	251-341	Flange - Bearing	4
84	76-9430	Spring - Extension	1
85	92-6273	Bracket - Spring	1
86	92-6290	Spacer	1
87	3256-68	Washer	2

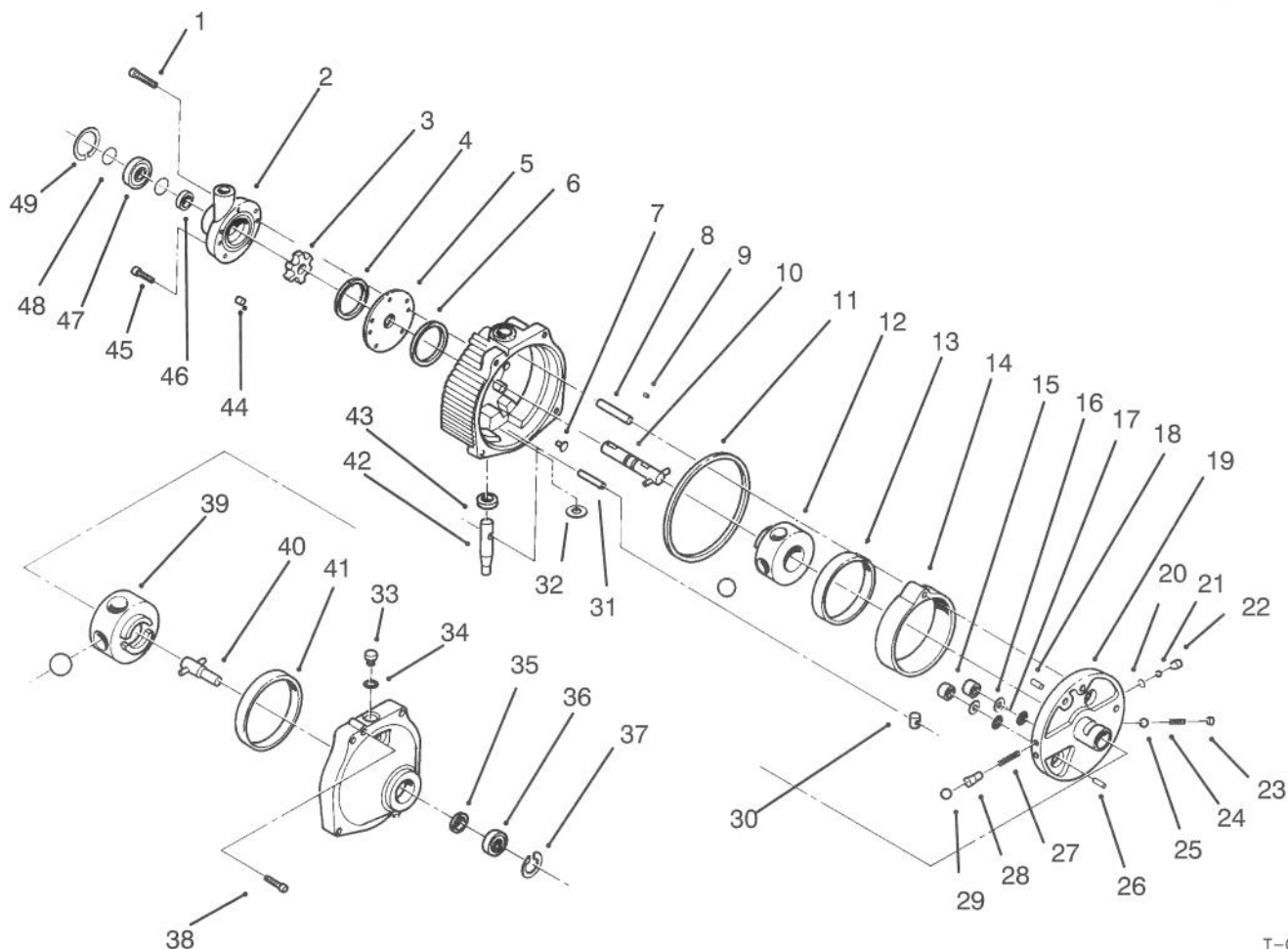


T-0883

HYDROSTATIC TRANSMISSION ASSEMBLY

Ref. No.	Part No.	Description	No. Used
1	56-2800	Screw - Hex. Socket Hd.	1
2	56-2830	Charge Pump Assembly (Incl. Ref. #1)	1
3	56-3120	Carrier	1
4	56-2850	Ring - Seal	1
5	56-2860	Plate - Pump	1
6	56-2870	Ring - Seal	1
7	56-2880	Button	2
8	56-2890	Pin - Dowel	1
9	56-2900	Pin - Drive	1
10	56-2910	Input Shaft Assembly	1
11	56-2920	Ring - Seal	1
12	56-2930	Pump Rotor & Ball Assembly	1
13		Race - Pump	1
14	56-2940	Cam Ring Assembly (Incl. Ref. #13)	1
15	56-2950	Piston	2
16	56-2960	Ring - Backup	2

Ref. No.	Part No.	Description	No. Used
17	56-2970	"O" Ring	2
18	56-2980	Pin - Coil	1
19	56-2990	Pintle Assembly (Incl. Ref. #15-18, 20, 22-26 & 27-29)	1
20	56-3000	Ring - Retaining	2
21	56-3010	Ball	2
22	56-3020	Body - Check Valve	2
23	56-3050	Plug - Relief Valve	1
24	56-3040	Spring - Relief Valve	1
25	56-3030	Ball	1
26	56-3060	Pin - Dowel	1
27	56-3180	Spring - Valve	2
28	56-3200	Body - Valve	2
29	56-3210	Ball	2
30	56-3170	Insert - Cam Ring	1
31		Dowel	1
32		Washer - Control Shaft	1

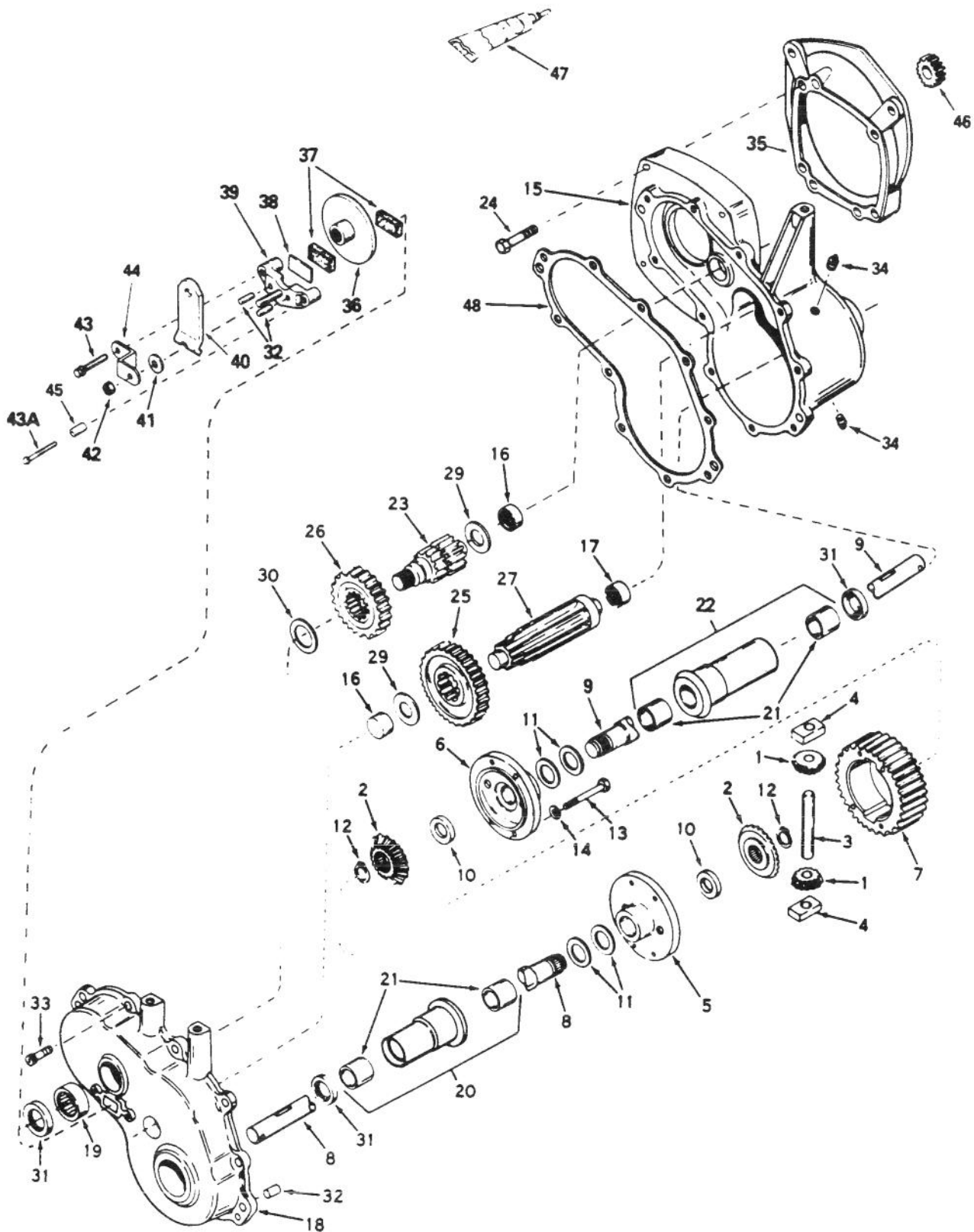


T-0083

HYDROSTATIC TRANSMISSION ASSEMBLY (Continued)

Ref. No.	Part No.	Description	No. Used	Ref. No.	Part No.	Description	No. Used
33	56-3250	Plug Assembly (Incl. Ref. #34)	1	43	56-3130	Seal - Oil	1
34	56-3260	"O" Ring	1	44	56-3110	Pin - Roll	6
35	56-3270	Seal - Oil	1	45	56-3100	Screw - Hex. Socket Hd.	4
36	56-3280	Bearing - Output	1	46	56-2820	Seal - Oil	1
37	56-3290	Ring - Retaining	1	47	56-2810	Bearing - Input	1
38	56-3300	Screw - Hex. Socket Hd.	2	48	56-3090	Ring - Retaining	2
39	56-3220	Motor Rotor & Ball Assembly	1	49	56-3080	Ring - Retaining	1
40	56-3230	Output Shaft Assembly	1	*	56-3310	Kit - Overhaul Seal (Incl. Ref. #4, 6, 11, 16, 17, 34, 35, 43 & 46)	1
41	56-3240	Race - Motor	1				
42	56-3140	Control Shaft Kit					

DIFFERENTIAL ASSEMBLY NO. 1310-001A

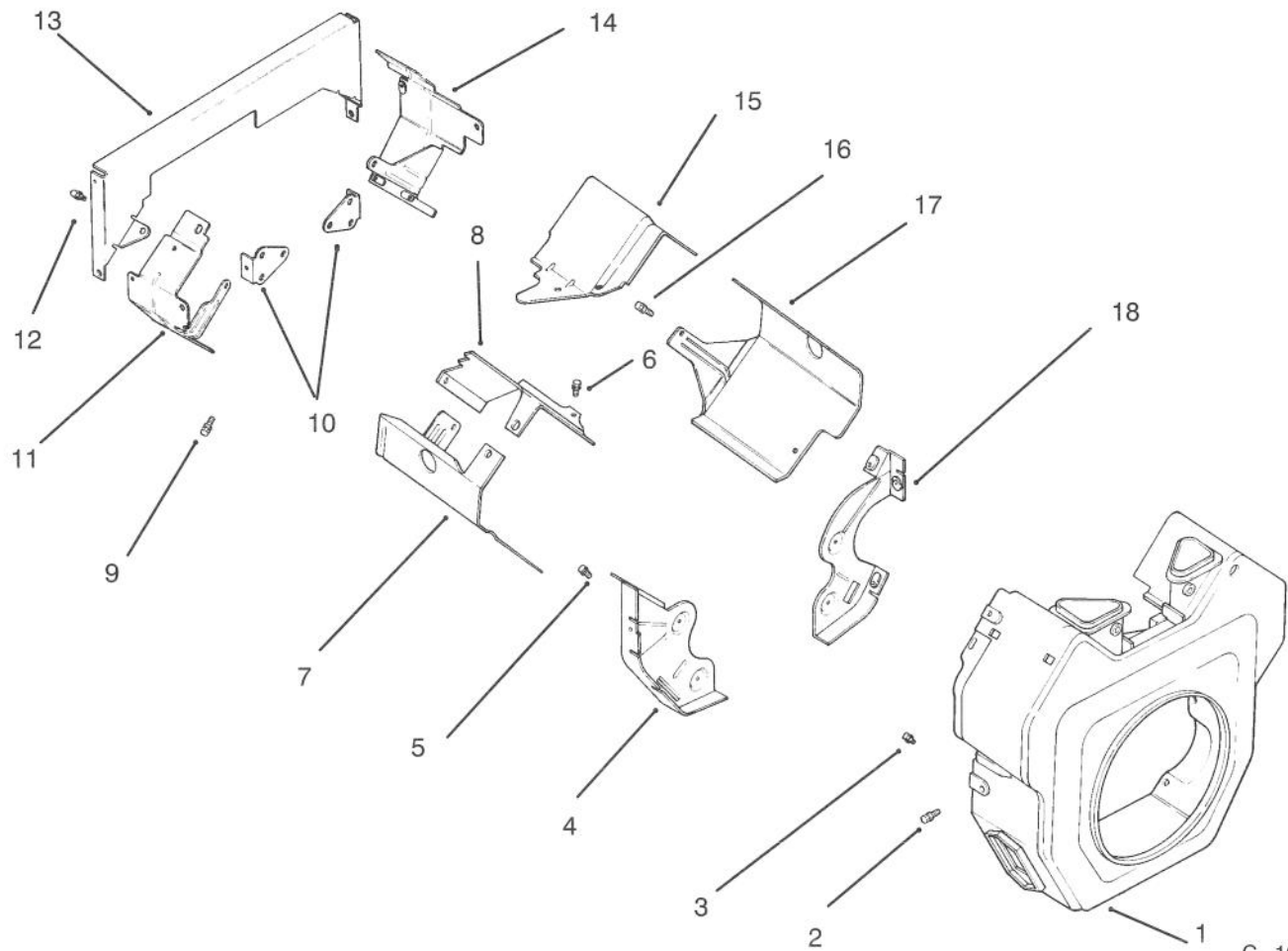


DIFFERENTIAL ASSEMBLY NO. 1310-001A

Ref. No.	Part No.	Description	No. Used
1	778197	Pinion – Bevel	1
2	778198	Gear – Bevel	1
3	786019	Pin – Drive	1
4	786027	Block – Drive	1
5	774028A	Carrier – Differential	1
6	774029A	Carrier – Differential	1
7	778033A	Gear – Ring	1
8	774607	Axle – 16-5/8"	1
9	774608	Axle – 21-57/64"	1
10	780107	Washer	1
11	780042	Washer – Thrust	1
12	792018	Ring – Snap	1
13	792020	Screw – Hex. Hd.	1
14	792006	Washer – Lock	1
15	770080	Case Assembly (Incl. Ref. #16 & 17)	1
16	780013	Bearing – Needle	1
17	780088	Bearing – Needle	1
18	772085	Cover Assembly (Incl. Ref. #16 & 19)	1
19	780089	Bearing 0 Needle	1
20	782041A	Housing Assembly – 6-5/8" (Incl. Ref. #21)	1
21	780054	Bushing	1
22	782042A	Housing Assembly – 8-5/8" (Incl. Ref. #21)	1

Ref. No.	Part No.	Description	No. Used
23	776245	Shaft – Brake	1
24	79-2120	Screw – Hex. Hd.	1
25	778036	Gear – Output	1
26	778037	Gear – Idler	1
27	776244	Shaft – Output	1
29	780001	Washer	1
30	780090	Washer	1
31	788008	Seal – Oil	1
32	786026	Pin – Dowel	1
33	792046	Screw – Thread Forming	1
34	792010	Plug – Pipe	1
35	786112	Plate – Adapter	1
36	790027	Disc – Brake	1
37	790006	Pad – Brake	1
38	790007	Plate – Brake Pad	1
39	790025	Holder – Brake Pad	1
40	790010	Lever – Brake	1
41	792076	Washer – Flat	1
42	792075	Nut – Lock	1
43	792073	Screw – Thread Forming	1
43A	792085	Screw – Thread Forming	1
44	786086	Bracket	1
45	786066	Spacer	1
46	778194	Gear – Spur 22T	1
47	510334	Gasket Eliminator	1
48	788044	Gasket	1

3316-457

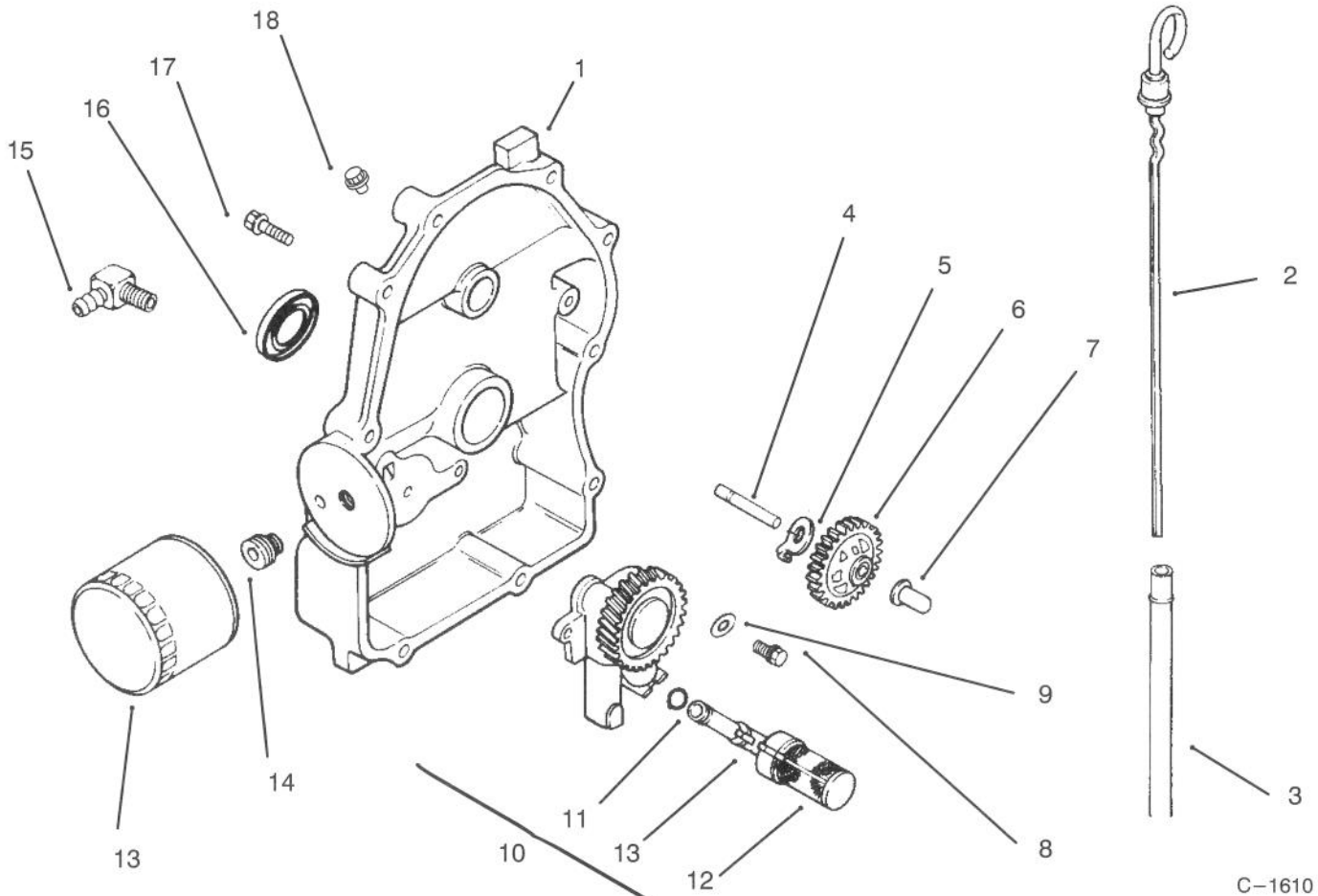


C-1609

BAFFLES & SHROUD

Ref. No.	Part No.	Description	No. Used
1	24 027 08	Housing – Blower	1
2	M-0549016	Screw	5
3	M-0551016	Screw	1
4	24 146 02	Plate – Backing #2 side	1
5	M-0645016	Screw	4
6	M-0649016	Screw	2
7	24 063 08	Baffle – Cylinder Barrel # 1 side	1
8	24 063 02	Baffle – Valley #1 side	1
9	M-0549010	Screw	2
10	24 126 04	Bracket – Support	2

Ref. No.	Part No.	Description	No. Used
11	24 063 13	Baffle, – Ducted Air #1 side	1
12	M-0639010	Screw	8
13	24 146 04	Plat – Ducted Air Backing	1
14	24 063 12	Baffle – Ducted air #2 side	1
15	24 063 01	Baffle, Valley #2 side	1
16	M-0549016	Screw	2
17	24 063 07	Baffle – Cylinder Barrel #2 side	1
18	24 146 01	Plate – Backing #1 side	1

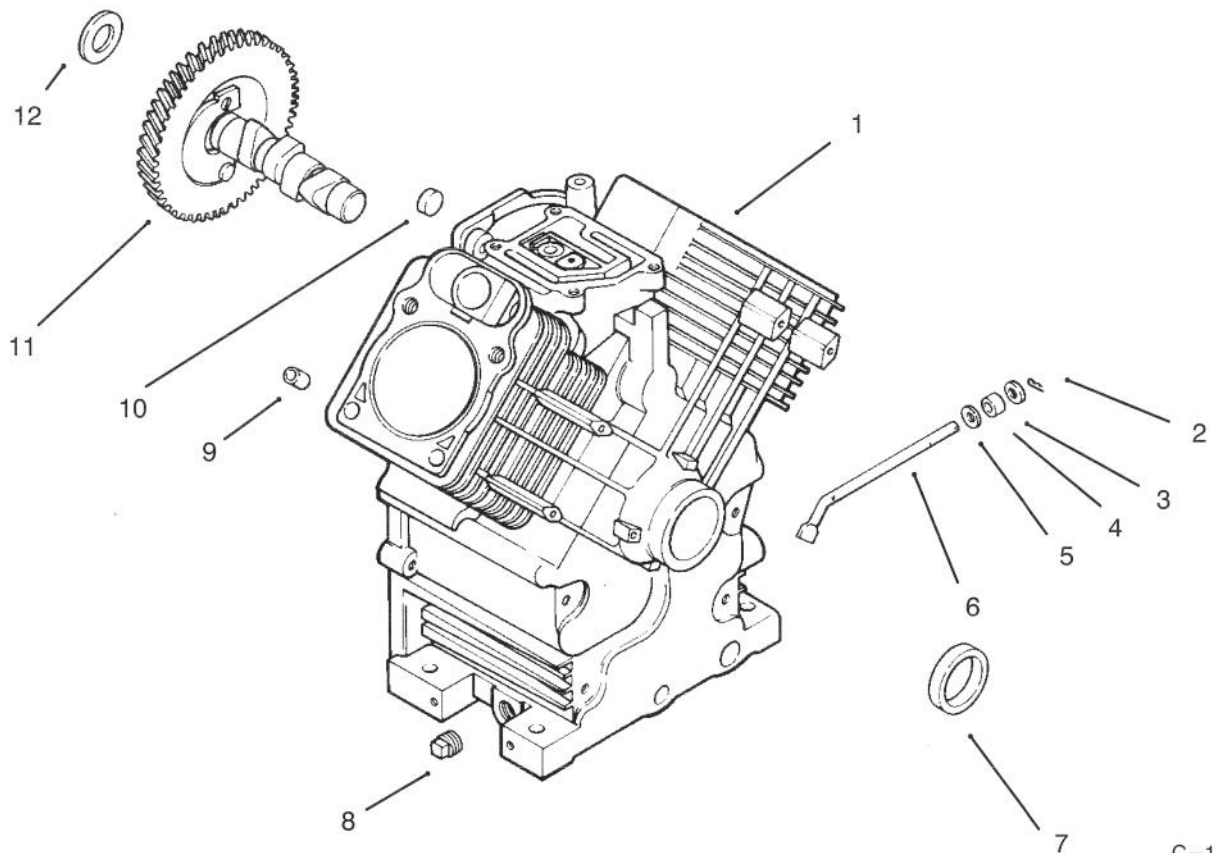


C-1610

OIL PAN/LUBRICATION

Ref. No.	Part No.	Description	No. Used	Ref. No.	Part No.	Description	No. Used
1	24 009 04	Plate - Closure	1	11	24 153 01	"O"Ring	1
2	24 038 01	Dipstick	1	12	24 381 01	Pick-up, Oil	1
3	24 123 04	Tube - Dipstick	1	13	12 050 01	Filter - Oil	1
4	12 144 02	Shaft - Governor Gear	1	14	24 136 01	Adapter - Oil Filter	1
5	52 448 02	Tab - Locking	1	15	25 155 02	Connector, 90° Hose	1
6	24 043 07	Governor Gear Assembly	1	16	52 032 08	Seal - Oil (PTO End)	1
7	12 380 01	Pin - Governor Regulating	1	17	SM-0839045	Screw	10
8	M-0645025	Screw	2	18	52 099 06	Switch - Oil Pressure	1
9	SM-0631005	Washer - Flat	2	*	25 113 05	Decal - Oil Sentry	1
10	24 393 03	Oil Pump Assembly (Incl. Ref. # 11-12)	1				

*Not Illustrated



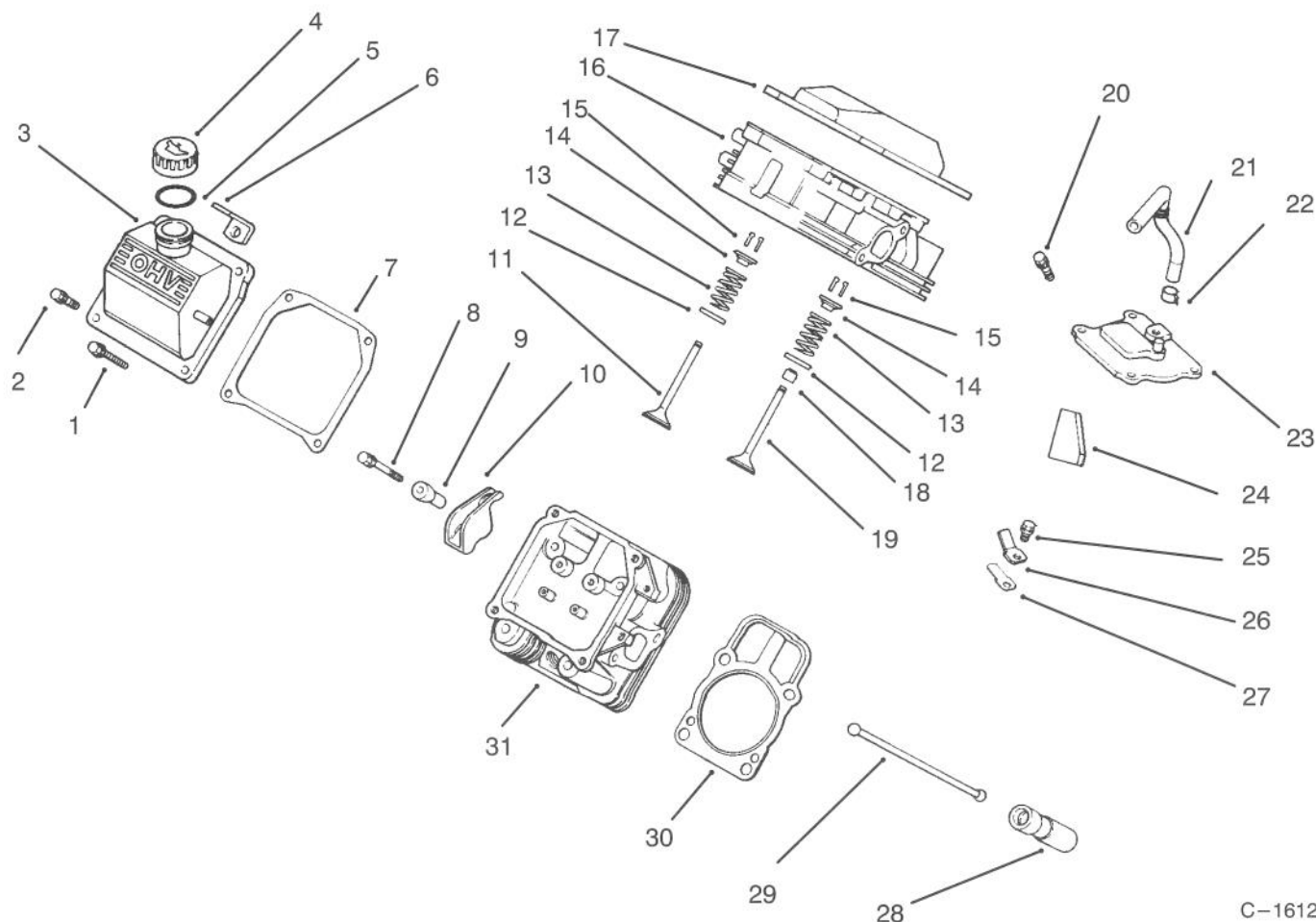
C-1611

CRANKCASE

Ref. No.	Part No.	Description	No. Used
1		Cylinder block (USE: Miniblock 24 782 01)	1
2	12 380 04	Pin - Hitch	1
3	X-25-102	Washer - Plain	1
4	12 032 01	Seal - Governor Cross Shaft	1
5	X-25-63	Washer	1
6	24 144 01	Shaft - Governor cross	1
7	24 032 01	Seal - Oil	1
8	X-75-10	Plug, sq. hd.	2
9	12 380 03	Pin - Dowel	6
10	52 139 09	Plug - Cup	1

Ref. No.	Part No.	Description	No. Used
11	24 012 03	Camshaft	1
12	12 422 09	Shim - Camshaft	A/R
*	12 422 13	Shim - Camshaft	A/R
*	12 422 07	Shim - Camshaft	A/R
*	12 422 08	Shim - Camshaft	A/R
*	12 422 10	Shim - Camshaft	A/R
*	12 422 11	Shim - Camshaft	A/R
*	12 422 12	Shim - Camshaft	A/R
*	24 782 01	Short Block	1
*	24 755 03	Set - Gasket	1

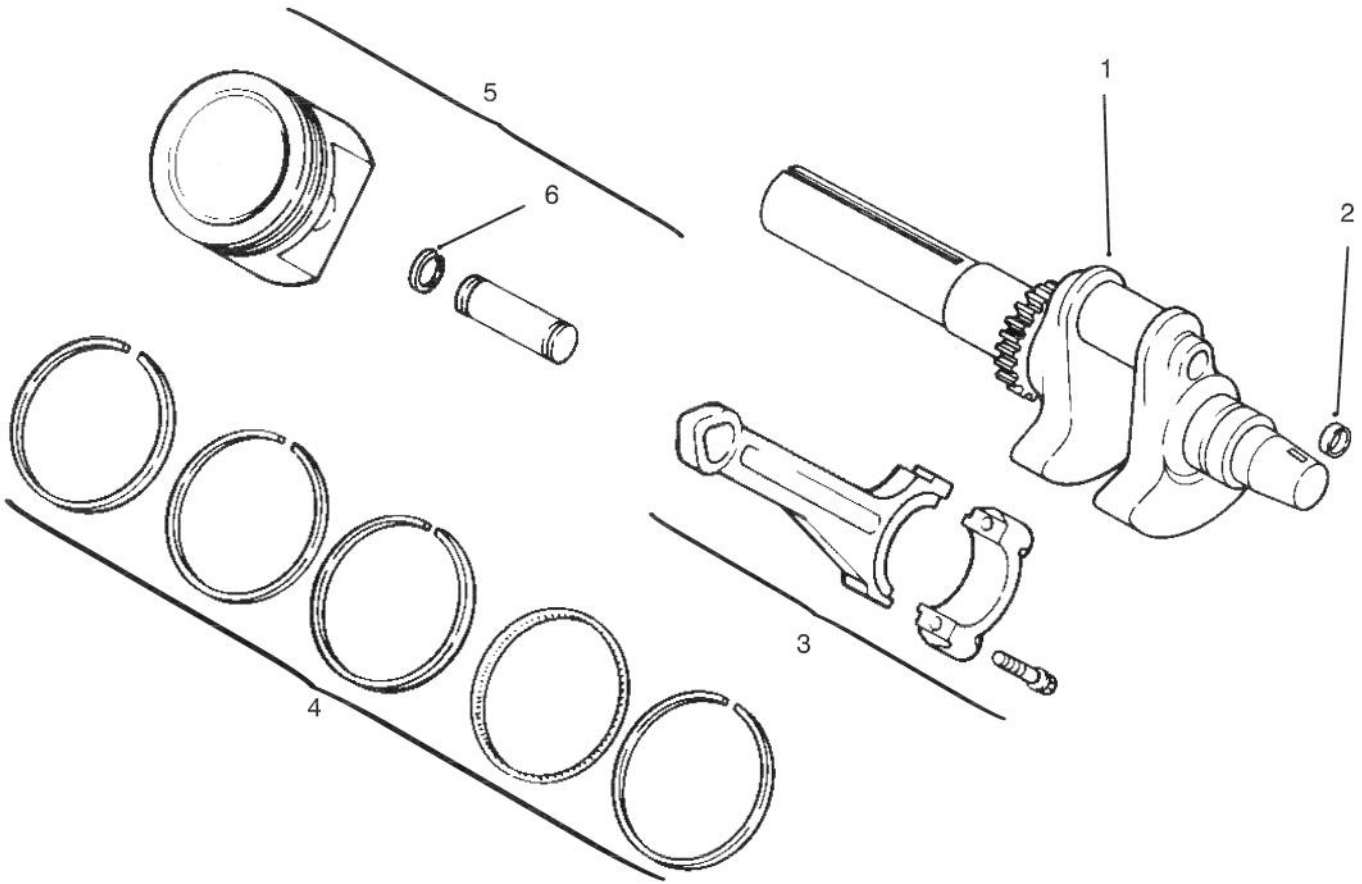
*Not Illustrated



C-1612

CYLINDER HEAD, VALVE & BREATHER

Ref. No.	Part No.	Description	No. Used	Ref. No.	Part No.	Description	No. Used
1	12 086 16	Screw	8	17	24 096 07	Cover - Rocker	1
2	M-0651030	Screw	8	18	12 032 02	Seal - Valve Stem	2
3	24 096 06	Cove - Rocker		19	24 017 01	Valve - Intake	2
4	12 173 02	Cap - Oil Fill Tube	1	20	SM-0645020	Screw	4
5	12 153 03	"O"Ring	1	21	24 326 02	Hose - Breather	1
6	12 445 05	Strap - Lifting	1	22	X-426-9	Clamp - Breather	1
7	24 041 04	Gasket - Valve Cover	2	23	24 033 01	Kit, - Breather	1
8	M-0640034	Screw	4	24	24 050 01	Filter - Breather	1
9	24 194 01	Ball - Pivot, Rocker	4	25	SM-0545010	Screw	1
10	24 186 01	Arm - Rocker	4	26	12 018 01	Retainer - Breather Reed	1
11	24 016 01	Valve - Exhaust	2	27	12 402 01	Reed - Breather	1
12	52 018 01	Retainer - Spring	4	28	12 351 01	Lifter - Valve	4
13	24 089 02	Spring - Valve	4	29	24 411 01	Rod - Push	4
14	12 173 01	Cap - Valve Spring	4	30	24 041 08	Gasket - Cylinder Head	2
15	12 755 03	Kit - Retainer	4	31	24 318 02	Head Assembly #2 Cylinder	1
16	24 318 07	Head Assembly #1 Cylinder	1				



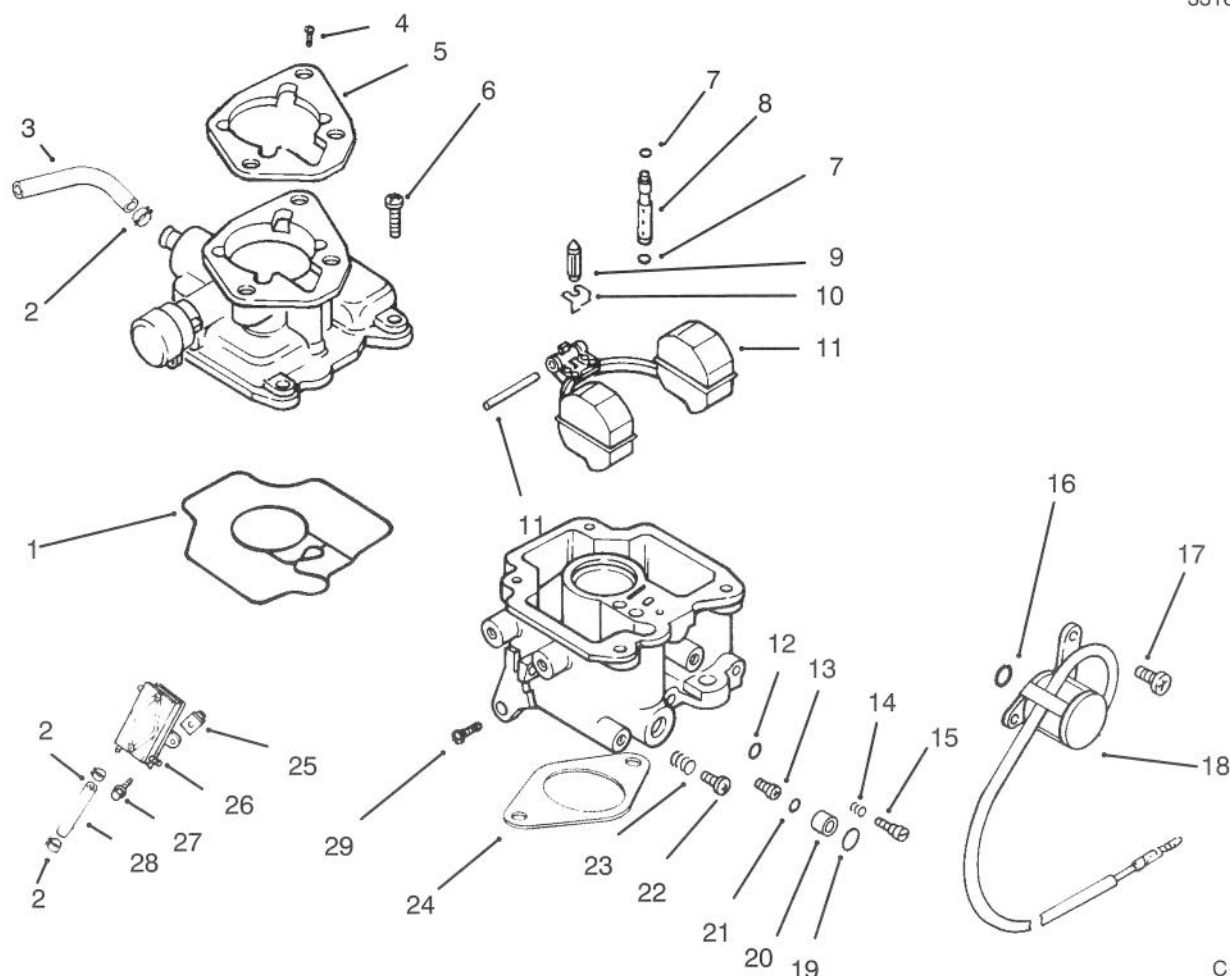
C-1613

CRANKSHAFT, PISTON AND RINGS

Ref. No.	Part No.	Description	No. Used
1	24 014 32	Crankshaft	1
2	12 139 01	Plug, cup	1
3	24 067 01	Connecting Rod (Std.)	2
*	24 067 02	Connecting Rod (.25)	2
4	24 108 01	Ring Set (Std.)	1
*	24 108 02	Ring Set (.25)	1

Ref. No.	Part No.	Description	No. Used
*	24 108 03	Ring Set (.50)	1
5	24 874 01	Piston w/Ring Set (Std.) (Incl. Ref. # 4-6)	2
*	24 874 02	Piston w/Ring Set (.25)	2
*	24 874 03	Piston w/Ring Set (.50)	2
6	24 018 01	Retainer - Piston Pin	4

*Not Illustrated

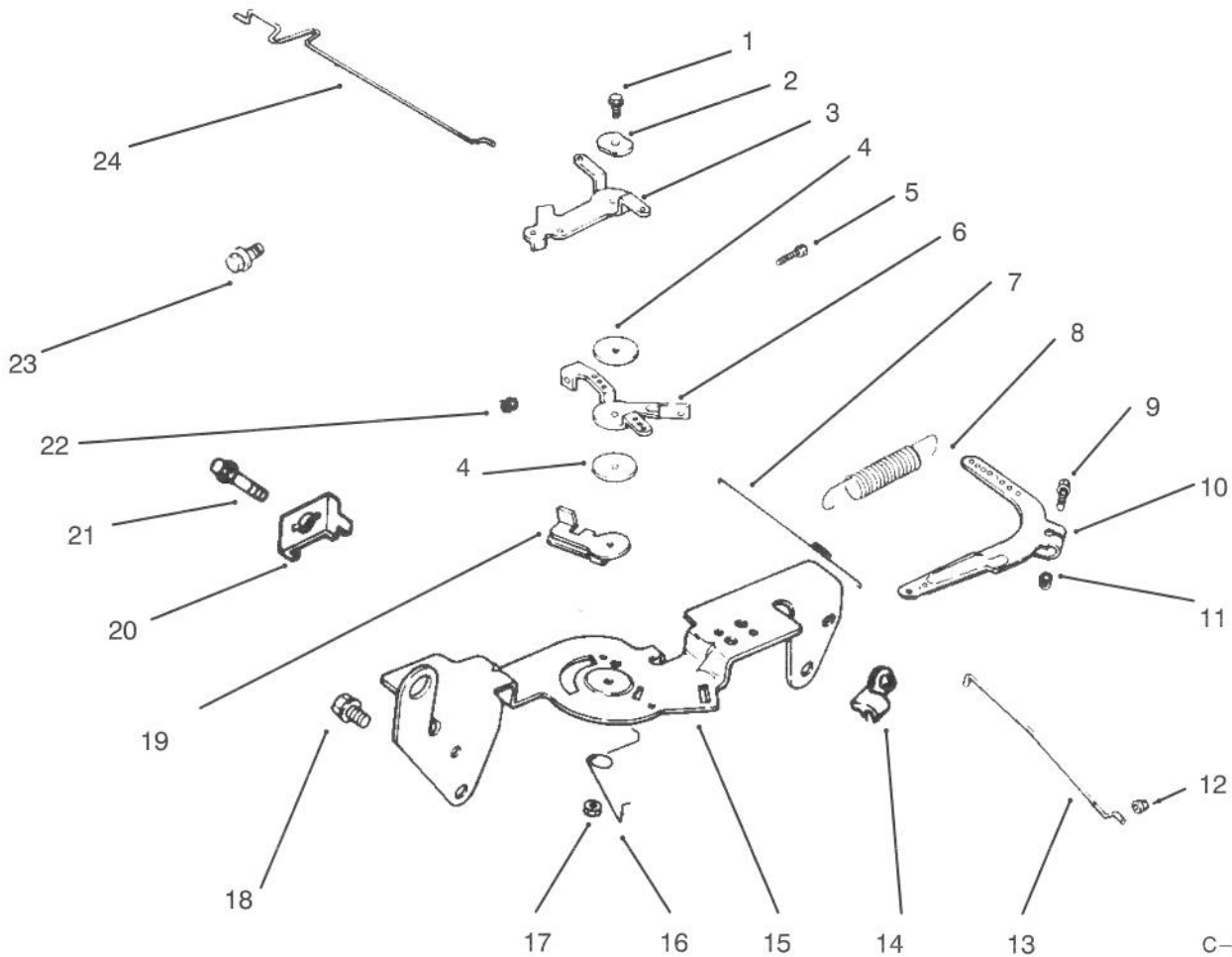


C-1614

CARBURETOR AND FUEL PUMP

Ref. No.	Part No.	Description	No. Used	Ref. No.	Part No.	Description	No. Used
1	24 041 09	Gasket – Carburetor Body	1	18	24 435 01	Solenoid	1
*	24 853 04	Kit – Carburetor w/Gasket (Incl. Ref. #1–15, 19–23 & 29)	1	19	24 153 05	"O"Ring	1
2	X-426-9	Clamp – Hose	4	20	24 521 01	Seat – Solenoid	1
3	25 353 10	Line – Fuel 9"	1	21	24 153 06	"O"Ring	1
4	M-0651030	Screw	2	22	24 086 10	Screw – Idle Speed Adjust	1
5	24 041 06	Gasket – Air Cleaner	1	23	24 089 10	Spring – Idle Speed Adjust	1
6	24 086 09	Screw	4	24	24 041 07	Gasket – Carburetor	1
7	24 153 02	"O"Ring	2	25	24 100 01	Nut	2
8	24 337 01	Jet – Slow	1	26	24 393 04	Pump – Fuel, Pulse	1
9	24 462 01	Valve – Inlet Needle	1	27	24 086 12	Screw	2
10	24 154 01	Clip – Inlet Needle Valve	1	28	24 353 02	Line – Fuel 15-1/2"	1
11	24 757 02	Kit – Float Repair	1	29	24 086 05	Screw – Throttle Stop	1
12	24 153 03	"O"Ring	1	*	24 041 07	Gasket – Carburetor	1
13	24 337 02	Jet – Main	1	*	24 757 03	Kit – Carburetor Repair	1
14	24 089 11	Spring – Idle Adjust	1	*	24 757 01	Kit – Solenoid Assembly	1
15	24 368 01	Needle – Idle Adjust	1	*	24 755 01	Kit – High Altitude (1500 meters)	1
16	24 153 04	"O"Ring	1	*	24 755 02	Kit – High Altitude (3000 meters)	1
17	24 086 07	Screw	2				

*Not Illustrated

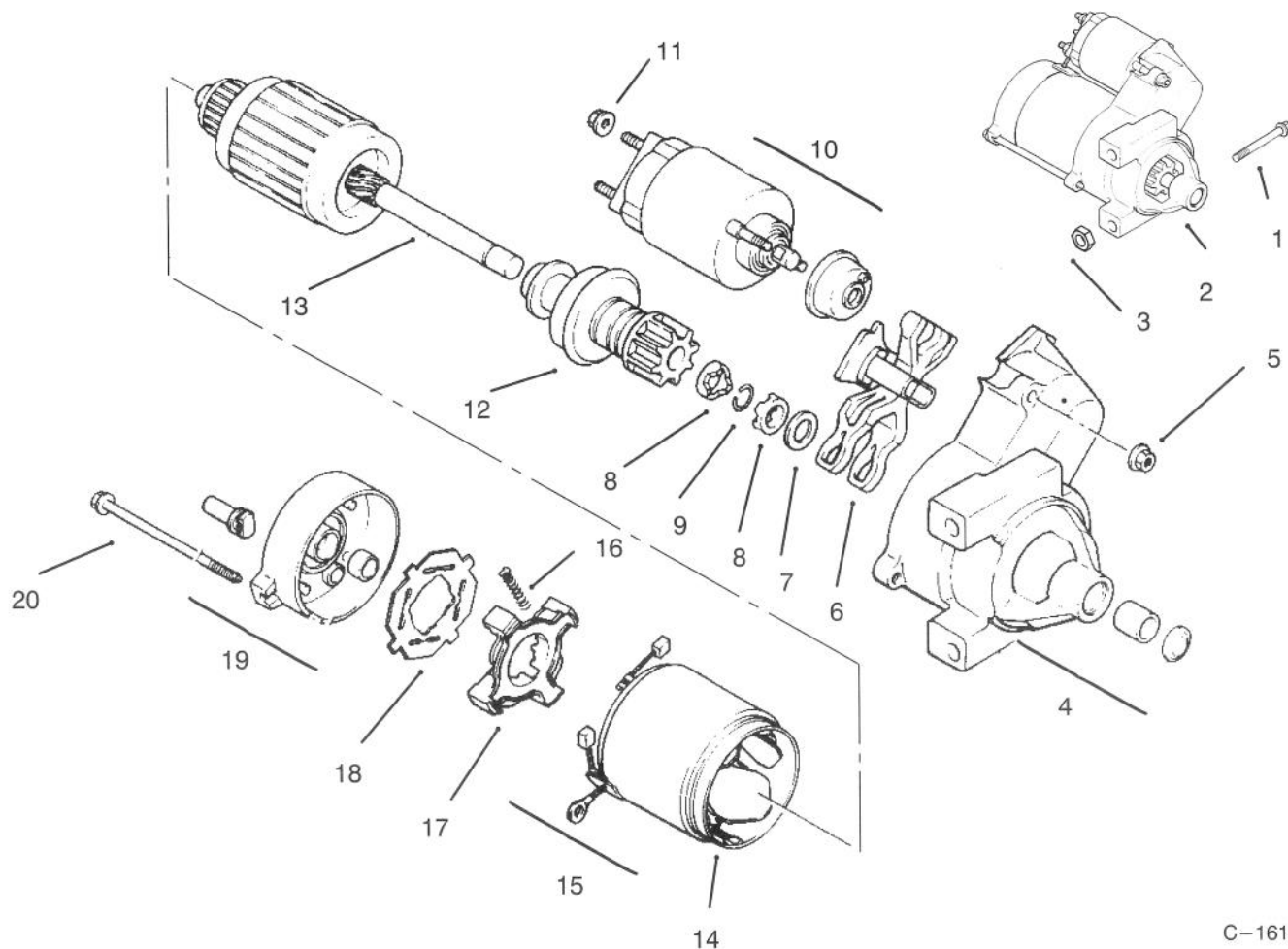


C-1615

THROTTLE LINKAGE AND GOVERNOR CONTROLS

Ref. No.	Part No.	Description	No. Used	Ref. No.	Part No.	Description	No. Used
1	SM-0545020	Screw	1	13	24 079 01	Linkage - Throttle	1
2	41 468 03	Washer - Wave	1	14	25 158 11	Bushing - Linkage	1
3	24 090 05	Lever - Choke	1	15	24 126 13	Bracket - Control	1
4	24 468 01	Washer	3	17	M-0547050	Nut	1
5	M-0401025	Screw	1	16	24 089 03	Spring - Choke Return	1
7	24 089 01	Spring - Linkage	1	18	SM-0645016	Screw	4
6	24 090 03	Lever - Throttle Control	1	19	24 090 07	Lever - Throttle Actuator	1
8	24 089 18	Spring - Governor	1	20	12 237 01	Clamp - Cable	2
9	SM-0642025	Screw	1	21	SM-0545016	Screw	2
10	24 090 08	Lever - Governor	1	22	M-0446030	Nut	1
11	SM-0641060	Nut	1	23	SM-0545016	Screw	1
12	25 158 08	Bushing - Linkage	1	24	24 079 02	Linkage - Choke	1

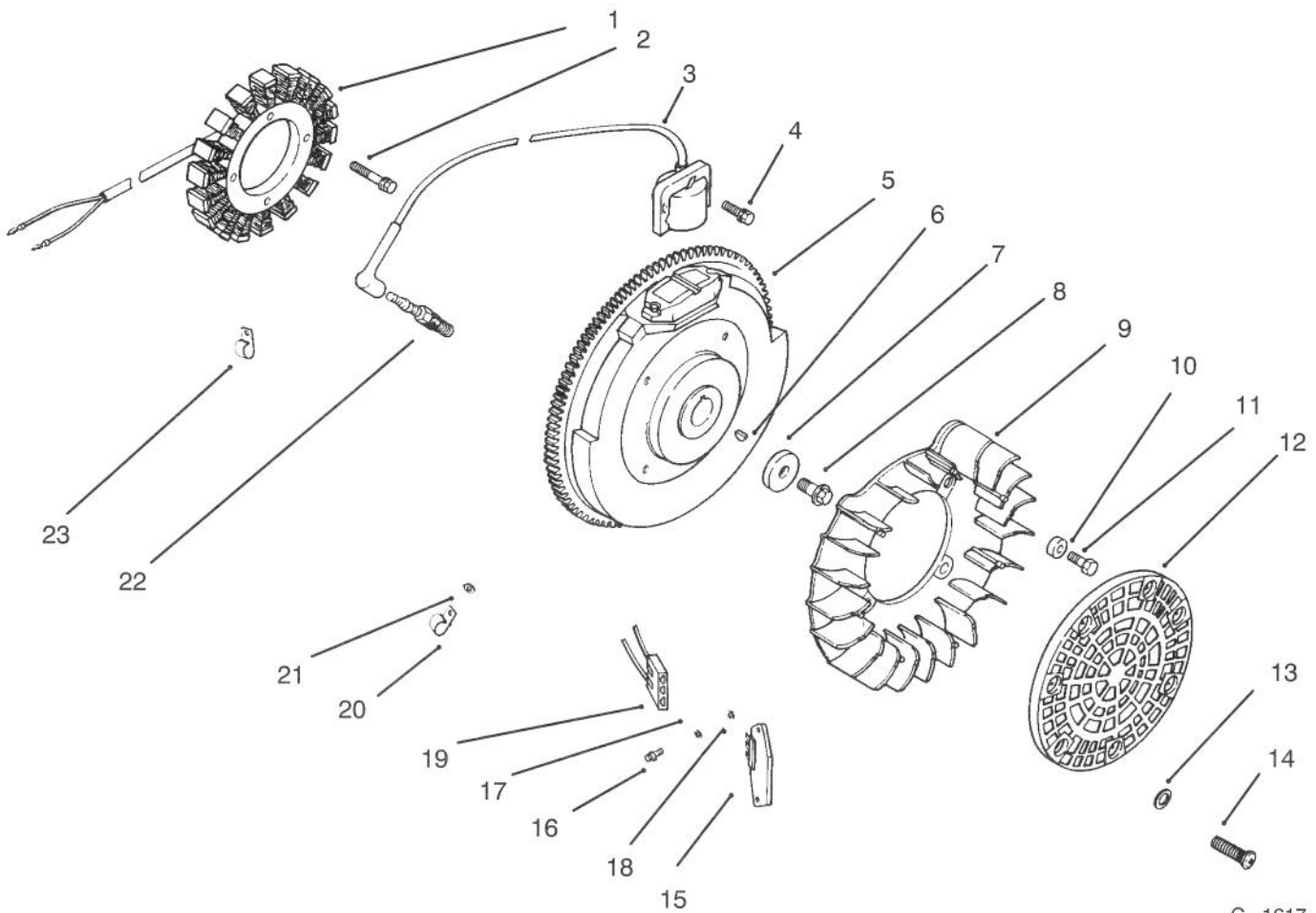
*Not Illustrated



C-1616

STARTER

Ref. No.	Part No.	Description	No. Used	Ref. No.	Part No.	Description	No. Used
1	SM-0839080	Screw	2	11	52 100 09	Nut	1
2	12 098 03	Starter - Solenoid Shift (Incl. Ref. # 4-20)	1	12	12 239 01	Drive - Pinion	1
3	M-0841080	Nut	1	13	12 170 03	Armature - Starter	1
4	12 081 02	Cap - Drive End	1	14	12 471 01	Frame	1
5	52 100 10	Nut - Starter	2	15	52 221 01	Kit - Brush (Incl. Ref. # 16)	1
6	12 090 10	Lever - Starter Drive	1	16	52 089 09	Spring - Brush	1
7	52 468 14	Washer - Thrust	1	17	52 323 03	Holder - Brush	1
8	52 100 08	Nut - Stop Collar	2	18	52 168 01	Insulator	1
9	52 141 03	Ring - Retainer	1	19	12 301 01	Cap - Commutator End	1
10	52 435 02	Solenoid	1	20	52 211 05	Bolt	1



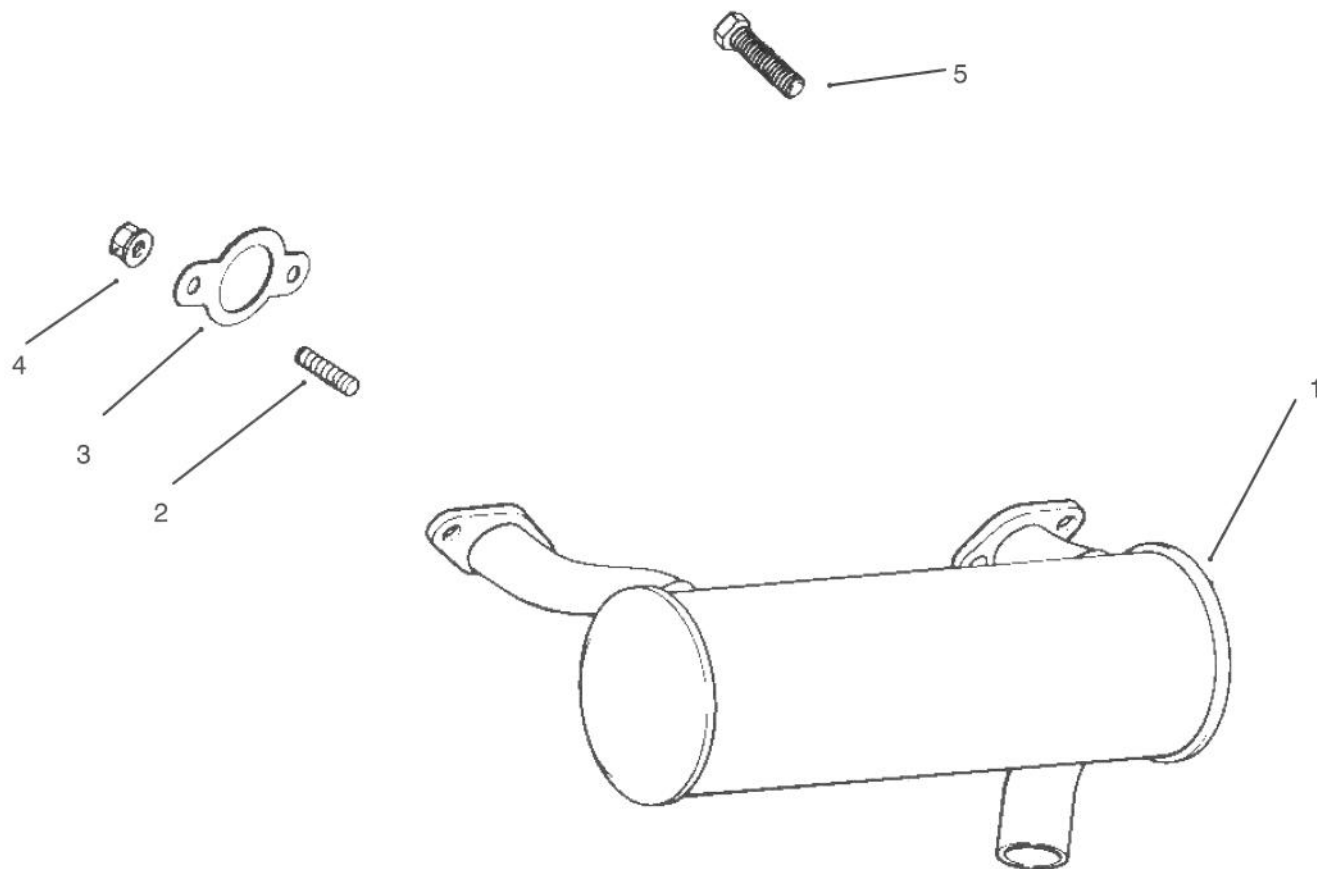
C-1617

IGNITION AND CHARGING SYSTEM

Ref. No.	Part No.	Description	No. Used
1	24 085 01	Stator - 15 amp	1
2	M-0548025	Screw	2
3	24 584 01	Module - Ignition	2
4	SM-0545020	Screw	4
5	24 025 01	Flywheel Assembly	1
6	X-42-15	Key	1
7	12 468 03	Washer	1
8	12 086 14	Screw	1
9	24 157 01	Fan	1
10	12 112 01	Spacer - Fan	4
11	M-0657010	Screw	4
12	24 162 13	Screen - Grass	1
13	X-25-53	Washer	4

Ref. No.	Part No.	Description	No. Used
14	25 086 43	Screw	1
15	25 403 03	Regulator - Rectifier	1
16	24 086 06	Screw	2
17	X-25-63	Washer	1
18	X-25-92	Washer	2
19	236602	Connector	1
20	235173	Clip - Cable	1
21	X-25-63	Washer	1
22	12 132 02	Spark Plug	2
23	48 154 02	Clip - Cable	1
*	24 176 06	Harness - Wiring	1
*	24 518 04	Lead - Green, 18 Gauge	1

*Not Illustrated



C-1618

EXHAUST

Ref. No.	Part No.	Description	No. Used
1	24 068 11	Muffler	1
2	M-0829033	Stud - Muffler	4
3	24 041 02	Gasket - Exhaust	2

Ref. No.	Part No.	Description	No. Used
4	M-0841080	Nut	4
5	M-0839020	Screw	1

TORO PART NUMBER INDEX

Part No.	Description	Pg. Ref. No. No. Qty.	Part No.	Description	Pg. Ref. No. No. Qty.
105805	Nut	2 73 1	46-6680	Bushing – Flanged	19 69 2
109989	Spacer	9 3 4	46-7510	Hood – Intake	7 10 1
102950	Washer	2 72 1	46-8091	Screw	13 42 2
113050	Cover – P.T.O. Switch	2 39 1	46-8560	Screw	5 35 6
114263	Spring – Seat	9 9 2	46-8560	Screw – Hex. Hd.	1 5 25
116716	Switch – Clutch & Brake	2 41 1	46-8560	Screw – Thread Forming	19 73 2
3-6498	Washer	18 11 1	47-1980	Cover Steering Shaft	2 31 1
3-6498	Washer – Thrust	3 8 5	48-7610	Screw	14 4 5
3-6498	Washer – Thrust	2 52 2	49-6430	Pad – Reverse	1 12 1
5-0930	Key	14 21 1	49-6470	Pad – Accelerator	1 4 1
11-4659	Air Cleaner Assembly	8 27 1	51-0780	Slide Seat Assembly R.H.	9 * 1
12-1109	Lever – Idler	11 27 1	51-0790	Slide Seat Adjust Assembly	9 2 1
12-5950	Rod – Battery Support	13 18 1	53-4430	Decal – Oil	6 51 1
13-5969	Differential Assembly	19 52 1	54-0080	Transmission – Hydrostatic	18 8 1
14-4109	Hood	13 3 1	54-0090	Valve Assembly	8 23 1
19-1470	Bolt – Shoulder	5 41 2	54-0100	Filter Head Assembly	6 63 1
21-9260	Cover – Dust	1 21 1	54-0110	Filter – Transmission Oil	5 44 1
22-8330	Plug	10 19 1	54-0140	Hub – Wheel	4 2 2
22-8340	Spring	10 21 1	54-0150	Cylinder – Lift	11 18 1
22-8350	Ball	10 22 1	54-0220	Assembly – Clutch	14 16 1
22-8360	Pin – Cam	10 24 1	54-0230	Field Assembly	15 1 1
22-8370	Seat – Check Valve	10 23 1	54-0240	Fan	18 44 1
22-8380	Retainer – Spring	10 3 2	54-0260	Spool	10 1 1
22-8410	Spring	10 4 1	54-0280	Shaft	12 13 1
22-8480	Ring – Retaining	10 6 1	54-0290	Seal Repair Kit	12 * 1
22-8490	Ring – Retaining	10 7 1	54-0300	Piston	12 3 1
22-8500	"O"Ring	10 2 2	54-0310	Head	12 6 1
23-1120	Washer – Flat	6 58 2	54-0320	Gear	18 7 1
24-5790	Weight – Rear	3 17 1	54-0330	Frame – Rear	3 13 1
27-0410	Bolt – Shoulder	5 28 2	54-0450	Axle Stand R.H.	6 60 1
27-5200	Spacer	10 5 1	54-0460	Axle Stand – L.H.	5 39 1
27-6230	Bolt – Shoulder	11 31 1	54-0560	Spindle L. H.	3 22 1
27-9080	Bushing	1 1 3	54-0570	Spindle R.H.	3 7 1
27-9080	Bushing	11 6 4	54-0880	Decal – Tunnel	2 47 1
27-9080	Bushing	3 31 2	54-0900	Decal – Lift Control	8 13 1
28-1120	Plug	10 18 1	54-0910	Decal – Warning	5 32 1
28-2480	Washer – Flat	3 2 2	54-0920	Decal – Parking Brake	8 1 2
28-3894	Wire – –Positive	14 29 1	54-0930	Pulley – Transmission	18 43 1
28-3940	Collar – Steering Shaft	2 45 2	54-0960	Spring – Parking Brake	11 42 1
29-0590	Screen	13 35 1	54-1000	Tower – Top	1 24 1
29-6163	Switch	18 21 1	54-1010	Channel – Front	5 45 1
33-1300	Element Assembly	7 6 1	54-1060	Bracket – Idler Mount	6 55 1
33-1310	Baffle	7 5 1	54-1120	Bracket – Filter Head	6 64 1
33-1320	Cup	7 4 1	54-1130	Link – Idler Anchor	5 22 2
33-1330	Nut Assembly	7 3 1	54-1170	Spring – Extension	11 30 1
33-1340	Clamp Assembly	7 2 1	54-1220	Support – Seat R.H.	8 8 1
33-1350	Band Assembly	7 1 2	54-1260	Clamp – Battery	13 9 1
36-3220	Pulley – Idler	11 26 1	54-1270	Bracket – Parking Brake	11 8 1
36-4950	Cap – Oil	13 36 1	54-1340	Link – Steering	2 43 1
37-7250	Spacer	6 53 2	54-1380	JackShaft – VBelt	5 40 1
38-8000	Filter – Fuel	13 26 1	54-1380	V-Belt	14 17 1
43-5220	Ring – Retaining	12 12 1	54-1390	VBelt – Traction	6 59 1
44-8160	Washer – Flat	14 14 1	54-1390	V-Belt	14 18 1
44-8310	Ring – Retaining	15 3 2	54-1410	Spring – Idler	5 21 2
44-8320	Spring	15 10 3	54-1440	Bracket – Tunnel	2 50 2
44-8330	Spacer – Bearing	15 6 1	54-1451	Control – Throttle, Choke	1 25 2
44-8340	Collar – Bearing	15 7 1	54-1470	Footrest – L.H.	2 63 1
44-8360	Field Coil, Rotor & Bearing	15 4 1	54-1490	Rod – Steering	19 65 1
44-8370	Armature & Pulley Assembly	15 5 1	54-1491	Rod – Steering , Rear	3 29 1
46-6680	Bushing	3 9 6	54-1550	Support – Hood	8 30 1

*Not Illustrated

TORO PART NUMBER INDEX (Cont.)

3316-457

Part No.	Description	Pg. Ref. No. No. Qty.	Part No.	Description	Pg. Ref. No. No. Qty.
54-1600	Jackshaft	19 57 1	56-2860	Plate - Pump	20 5 1
54-1770	Bracket - Cable Traction	2 64 1	56-2870	Ring - Seal	20 6 1
54-1800	Plate - Engine Front	5 8 2	56-2880	Button	20 7 2
54-1810	Plate - Engine, Rear	5 11 2	56-2890	Pin - Dowel	20 8 1
54-1830	Support - Shield	5 25 1	56-2900	Pin - Drive	20 9 1
54-1850	Support - Battery	13 16 1	56-2910	Input Shaft Assembly	20 10 1
54-1860	Stop - Hood Upper	13 6 2	56-2920	Ring - Seal	20 11 1
54-1870	Stop - Hood, Lower	5 31 2	56-2930	Pump Rotor & Ball Assembly	20 12 1
54-1880	Strap - Fuel Tank	13 4 2	56-2940	Cam Ring Assembly	20 14 1
54-1890	Foam - Tank	13 20 2	56-2950	Piston	20 15 2
54-1900	Tower - Front	1 3 1	56-2960	Ring - Backup	20 16 2
54-1910	Channel - Side R.H.	5 6 1	56-2970	"O"Ring	20 17 2
54-1920	Channel - Side L.H.	5 33 1	56-2980	Pin - Coil	20 18 1
54-1930	Fender R.H.	5 1 1	56-2990	Pintle Assembly	20 19 1
54-1940	Fender L.H.	5 36 1	56-3000	Ring - Retaining	20 20 2
54-1950	Bracket - Support Bearing	1 22 2	56-3010	Ball	20 21 2
54-2000	Pin - Pivot	11 13 1	56-3020	Body - Check Valve	20 22 2
54-2040	Follower Lever	2 54 1	56-3030	Ball	20 25 1
54-2060	Bellcrank Assembly	19 67 1	56-3040	Spring - Relief Valve	20 24 1
54-2070	Anchor - Spring	5 18 1	56-3050	Plug - Relief Valve	20 23 1
54-2100	Pin - Pivot	11 39 2	56-3060	Pin - Dowel	20 26 1
54-2110	Lever - Brake	11 2 1	56-3080	Ring - Retaining	21 49 1
54-2120	Link - Parking Brake	11 1 1	56-3090	Ring - Retaining	21 48 2
54-2160	Bracket - Anchor	14 10 1	56-3100	Screw - Hex. Socket Hd.	21 45 4
54-2260	Pad Footrest L.H.	2 62 1	56-3110	Pin - Roll	21 44 6
54-2270	Pad - Footrest R.H.	2 68 1	56-3120	Carrier	20 3 1
54-2290	Pipe - Exhaust	14 13 1	56-3130	Seal - Oil	21 43 1
54-2310	Hydraulic Tube Assembly	17 2 1	56-3140	Control Shaft Kit	21 42 1
54-2310	Hydraulic Tube Assembly	13 28 1	56-3170	Insert - Cam Ring	20 30 1
54-2330	Pulley - Engine	14 19 1	56-3180	Spring - Valve	20 27 2
54-2380	Pulley - Input	19 55 1	56-3200	Body - Valve	20 28 2
54-2390	Pulley - Output	19 74 1	56-3210	Ball	20 29 2
54-2470	Reservoir - Hydraulic	13 34 1	56-3220	Motor Rotor & Ball Assembly	21 39 1
54-2500	Channel - Middle	5 19 1	56-3230	Output Shaft Assembly	21 40 1
54-2570	Hydraulic Hose Assembly	17 4 1	56-3240	Race - Motor	21 41 1
54-2580	Hydraulic Hose Assembly	17 3 1	56-3250	Plug Assembly	21 33 1
54-2590	Hydraulic Hose Assembly	17 7 1	56-3260	"O"Ring	21 34 1
54-2610	Hydraulic Hose Assembly	17 5 1	56-3270	Seal - Oil	21 35 1
54-2620	Hydraulic Hose Assembly	17 6 1	56-3280	Bearing - Output	21 36 1
54-2630	Follower - Steering Shaft	2 53 1	56-3290	Ring - Retaining	21 37 1
54-2640	Cable - Traction Control	2 44 1	56-3300	Screw - Hex. Socket Hd.	21 38 2
54-3110	Hinge - Seat	8 3 1	56-3310	Kit - Overhaul Seal	21 * 1
54-8970	UBolt	19 53 1	56-3320	THook	11 20 1
54-9200	Lever - Idler	6 52 2	56-3370	Bracket - Spring	11 22 2
55-3570	Cap - Fuel	13 2 1	56-3390	Hydraulic Hose Assembly	17 1 1
55-3630	Adjustable Relief Valve	10 * 1	56-6590	Screw	8 14 1
55-3640	Seat - Relief	10 8 1	56-6920	Bracket - Cable Extension	11 40 1
55-3650	Plug	10 26 1	57-3100	Tie Rod - Steering	3 35 2
55-4300	Decal	11 43 1	59-1470	Shaft - Bellcrank	19 72 1
55-4320	Gasket	18 5 1	59-1500	Pivot - Axle	3 19 1
55-4860	Guide - Belt	5 37 1	59-1550	Pedal - Shaft	2 65 1
55-7120	Switch - Brake	11 9 1	59-1610	Tube - Grease Fitting	1 14 1
55-7310	Bracket - Idler	11 34 1	59-1620	Bracket - Transaxle	18 9 1
55-8660	Assembly - Clamp	14 9 1	60-8990	Plate - Transaxle	19 80 1
56-2760	Spring - Extension	11 21 2	60-9050	Bearing - Steering Shaft	2 46 1
56-2800	Screw - Hex. Socket Hd.	20 1 1	60-9130	Bracket - Jackshaft	19 71 1
56-2810	Bearing - Input	21 47 1	60-9140	Frame - Footrest	2 51 1
56-2820	Seal - Oil	21 46 1	60-9150	Tunnel	2 66 1
56-2830	Charge Pump Assembly	20 2 1	61-3610	Decal - Warning	11 29 2
56-2850	Ring - Seal	20 4 1	61-9780	Hub Cap	3 1 2

*Not Illustrated

TORO PART NUMBER INDEX (Cont.)

Part No.	Description	Pg. Ref. No. No. Qty.	Part No.	Description	Pg. Ref. No. No. Qty.
62-4040	Tank - Fuel	13 15 1	92-6287	Wire - Ground	14 25 1
62-4420	Spacer	3 32 9	92-6288	Decal - Service	13 40 1
62-4530	Idler - VBelt	5 43 2	92-6289	Swing Arm Assembly	18 13
62-4540	Idler - Flat	6 56 2	92-6290	Spacer	19 86 1
62-6780	Shaft - Steering	2 30 1	92-6291	Decal - Refueling	13 38 1
62-7400	Decal - Toro	2 70 1	92-6292	Pad - Fender R.H.	5 2 1
63-7590	Relay	8 42 1	92-6293	Pad - Fender L.H.	5 38 1
63-8360	Key	2 35 2	113179	Nut	2 38 1
63-8440	Decal - Hot Surface	14 5 1	231-122	Tire	4 9 2
65-5100	Handle	13 41 1	231-126	Tire	3 5 2
66-0120	Knob	1 26 2	232-27	Valve Stem w/Cap	4 7 2
66-1570	Frame - Lift	11 14 1	232-27	Valve Stem w/Cap	3 36 2
68-7330	Decal - Danger	13 * 1	233-37	Knob	11 3 1
72-4060	Bearing Assembly	19 79 2	233-37	Knob	8 11 1
74-0110	Pedal - Traction	1 11 1	237-42	"O"Ring	10 20 2
74-0720	Tube - Manual	8 41 1	237-42	"O"Ring	8 24 2
75-4130	Spacer	18 22 1	237-42	"O"Ring	13 30 2
75-5470	Spacer Bearing	18 17 2	237-78	"O"Ring	11 17 2
75-6820	Meter - Hour	8 29 1	237-78	"O"Ring	8 19 2
76-1420	Wheel - Steering	2 29 1	237-79	"O"Ring	18 39 2
76-8640	Stud - Traction	18 14 1	237-79	"O"Ring	6 62 1
76-9430	Spring - Extension	19 84 1	237-80	"O"Ring	19 54 2
77-0981	Boot - Terminal	13 10 1	237-100	Grommet	13 19 1
77-3100	Decal - Caution	5 7 2	242-50	Nut	4 6 8
78-0370	Insert - Steering Wheel	2 71 1	242-60	Rim	3 6 2
80-3750	Spacer	18 2 2	242-71	Bolt - Wheel	4 1 8
80-3760	Support - Seat, Front	8 2 1	242-76	Rim	4 8 2
80-4910	Footrest - R.H.	2 69 1	2411-34	Ball Joint	1 16 1
80-4920	Pedal - Accelerator	1 8 1	2411-34	Joint - Ball	18 25 1
80-4930	Footrest - Pedal	1 6 1	2412-3	Clamp - Hose	14 3 2
82-4640	Battery	13 12 1	2412-93	Clamp	9 7 1
82-4680	Lever - Valve	8 10 1	2412-100	"J"Clamp	5 13 1
82-4700	Bracket - Lever, Valve	8 20 1	2412-100	"R"Clamp	13 22 1
88-9830	Switch - Ignition	2 36 1	2412-108	Clamp - Hose	13 23 4
92-5435	Support - Seat L.H.	8 32 1	2412-120	"R"Clamp	8 38 2
92-6250	Mount - Engine	5 10 1	251-210	Bearing - Ball	3 3 4
92-6251	Mount - Engine	5 12 1	251-288	Bearing w/Collar	19 59 2
92-6252	Mount - Cylinder	6 47 1	251-291	Bearing - Pulley	15 8 1
92-6254	Bar - Tension	5 24 1	251-292	Bearing - Field	15 2 1
92-6255	Axle - Rear	3 10 1	251-304	Rod End	3 33 2
92-6257	Plate - Pivot	3 24 1	251-304	Rod End	2 57 1
92-6259	Bracket	8 43 1	251-304	Rod End	19 61 1
92-6260	Duct - Engine	14 6 1	251-305	Rod End	3 25 3
92-6265	Hose - Intake	14 2 1	251-305	Rod End	19 63 1
92-6266	Panel - Tower Rear	2 37 1	251-307	Bearing	18 16 2
92-6267	Shield - Heat	13 21 1	251-341	Flange - Bearing	19 83 4
92-6269	Lever - Traction	18 23 2	256-154	Bushing	11 32 2
92-6270	Plate - Traction	18 10 1	256-156	Bushing	1 10 2
92-6273	Bracket - Spring	19 85 1	283-17	Pin - Clevis	8 16 1
92-6274	Plug - Cap	13 25 1	283-55	Pin - Clevis	11 23 1
92-6275	Engine - Kohler 20 HP	14 1 1	288-10	Cap - Pipe	14 28 1
92-6276	Decal - ProLine 120	13 37 2	289-46	Nipple - Pipe	14 27 1
92-6277	Decal - Switch	2 40 1	302-2	Fitting - Grease	19 76 2
92-6278	Decal - Throttle Choke	2 32 1	302-5	Fitting - Grease	3 4 4
92-6279	Harness - Wire	16 * 1	302-22	Fitting - Grease	1 13 1
92-6280	Seat	9 1 1	302-49	Fitting - Grease	3 21 3
92-6281	Plate - Seat	8 12 1	302-49	Fitting - Grease	19 68 1
92-6282	Switch - Seat	9 11 1	302-60	Fitting - Grease 90°	18 12
92-6283	Hose - Fuel	13 24 2	321-2	Screw	11 36 2
92-6284	Plate - Adapter, Seat	9 5 2	321-2	Screw - Hex. Hd.	1 27 4

*Not Illustrated

TORO PART NUMBER INDEX (Cont.)

3316-457

Part No.	Description	Pg. No.	Ref. No.	Qty.	Part No.	Description	Pg. No.	Ref. No.	Qty.
321-2	Screw - Hex. Hd.	18	47	1	3234-1	Screw - Hex. Flange Hd.	18	4	5
321-3	Screw	6	49	2	3234-14	Screw	5	3	4
321-3	Screw - Hex. Hd.	1	9	2	3241-1	Screw - Set	19	56	4
321-3	Screw - Hex. Hd.	13	1	2	3241-2	Screw - Set	18	42	2
321-4	Screw	9	10	2	3245-35	Screw - Set	19	60	4
321-4	Screw	3	15	4	3250-46	Screw	18	36	2
321-4	Screw	8	36	5	3253-3	Washer	11	37	2
321-4	Screw - Hex. Hd.	2	61	14	3253-3	Washer - Lock	18	46	1
321-14	Screw	8	7	2	3253-3	Washer - Lock	6	50	2
321-14	Screw	5	16	2	3253-4	Washer - Lock	14	8	1
321-23	Screw	8	9	2	3253-6	Washer - Lock	14	11	2
322-2	Screw	5	30	4	3253-7	Washer	3	39	2
322-3	Screw - Hex. Hd.	13	5	2	3254-6	Washer - Lock, Int. Tooth	14	24	1
322-4	Screw	9	4	4	3255-5	Washer - Lock	19	49	3
322-4	Screw	8	6	8	3255-8	Washer - Lock, Ext. Tooth	6	69	1
322-4	Screw	5	26	13	3256-1	Washer	13	13	4
322-4	Screw	11	33	4	3256-1	Washer	11	38	2
322-4	Screw	8	46	4	3256-1	Washer - Flat	8	25	10
322-4	Screw - Hex. Hd.	1	2	19	3256-3	Washer - Flat	6	54	2
322-4	Screw - Hex. Hd.	13	17	2	3256-3	Washer - Flat	19	78	4
322-4	Screw - Hex. Hd.	19	75	6	3256-4	Washer - Flat	3	26	7
322-5	Screw	9	6	4	3256-4	Washer - Flat	2	56	1
322-6	Screw	5	9	8	3253-5	Washer - Lock	18	34	4
322-6	Screw	11	11	2	3256-23	Washer - Flat	5	4	8
322-6	Screw	5	23	11	3256-23	Washer - Flat	8	5	6
322-6	Screw - Hex. Hd.	18	32	2	3256-23	Washer - Flat	2	49	4
322-7	Screw - Hex. Hd.	18	18	1	3256-24	Washer - Flat	11	4	2
322-10	Screw	4	5	2	3256-51	Washer	8	39	2
322-10	Screw - Hex. Hd.	2	67	2	3256-55	Washer	18	45	1
322-11	Screw - Hex. Hd.	18	1	4	3256-68	Washer	19	87	2
323-7	Screw	5	20	3	3257-5	Key - Woodruff	18	41	3
323-8	Screw - Hex. Hd.	19	81	4	3257-10	Key - Woodruff	4	3	2
323-9	Screw	14	30	2	3257-24	Key - Woodruff	18	37	1
323-9	Screw	6	57	2	3258-19	Screw - Round Hd.	7	7	2
323-10	Screw	11	25	1	3272-6	Pin - Cotter	8	15	1
323-10	Screw - Hex. Hd.	14	22	1	3272-10	Pin - Cotter	11	5	2
323-11	Screw	5	42	2	3272-12	Pin - Cotter	3	37	2
323-12	Screw - Hex. Hd.	14	23	1	3290-211	Washer - Spring	5	29	2
323-13	Screw - Hex. Hd.	19	50	1	3290-250	Pin - Cotter	5	15	2
323-14	Screw - Hex. Hd.	19	82	2	3290-355	Pin - Cotter	11	24	1
323-16	Screw - Hex. Hd.	19	51	1	3290-357	Nut - Wizz	14	31	1
324-7	Screw	3	27	5	3290-379	Cable Tie	6	66	7
324-7	Screw - Hex. Hd.	2	58	1	3290-440	Washer - Belleville	2	42	1
324-7	Screw - Hex. Hd.	19	62	2	3296-3	Nut - Hex.	1	15	1
324-11	Screw - Hex. Hd.	14	12	1	3296-3	Nut - Lock	18	35	1
325-6	Screw	3	38	2	3296-6	Nut	11	35	1
327-24	Screw	6	48	1	3296-6	Nut - Lock	15	9	3
3212-24	Screw - Hex. Hd.	14	15	1	3296-9	Nut	18	20	2
2412-92	Clamp - Hose	14	32	1	3296-15	Nut	11	41	2
3217-6	Nut	18	19	4	3296-25	Nut	18	24	1
3217-6	Nut - Square	14	7	1	3296-29	Nut	8	4	12
3220-1	Nut - Hex. Jam	18	26	1	3296-29	Nut	11	7	6
3220-1	Nut - Jam	1	17	1	3296-29	Nut	5	14	33
3220-4	Nut - Hex. Jam	19	64	2	3296-29	Nut	3	16	8
3220-4	Nut - Jam	3	28	3	3296-29	Nut - Hex.	13	7	9
3220-6	Nut - Jam	11	12	2	3296-29	Nut - Lock	18	3	16
3220-19	Nut - Jam	3	34	2	3296-29	Nut - Lock	4	4	2
3229-1	Bolt - Carriage	13	11	4	3296-29	Nut - Lock	9	8	8
3230-1	Bolt - Carriage	19	58	6	3296-29	Nut - Lock	1	18	24
3230-3	Bolt - Carriage	14	20	1	3296-39	Nut	8	37	1

*Not Illustrated

TORO PART NUMBER INDEX (Cont.)

Part No.	Description	Pg. No.	Ref. No.	Qty.	Part No.	Description	Pg. No.	Ref. No.	Qty.
3296-41	Nut - Hex.	3	12	1	32144-11	Screw - Thread Forming	5	5	2
3296-42	Nut - Lock	6	65	2	32144-15	Screw	3	18	2
3296-42	Nut - Lock	13	14	8	32144-18	Screw	8	45	2
3296-42	Nut - Lock	8	21	19	32144-19	Screw - Round Hd.	18	48	3
3296-42	Nut - Lock	1	23	16	32149-1	Nut - Lock	5	27	1
3296-44	Nut	11	28	1	32149-1	Nut - Lock	19	70	6
3296-44	Nut	5	17	6	32151-48	Ring - Retaining	3	11	2
3296-44	Nut - Lock	14	26	5	32152-9	Nut	3	23	5
3296-61	Nut	6	46	1	32152-9	Nut - Lock	2	55	1
32103-22	Nut - Wing	13	8	3	32152-9	Nut - Lock	19	66	2
32104-76	Screw	8	40	4	32152-10	Nut - Lock	12	2	1
32107-11	Nut - Square	7	8	2	32153-3	Nut	11	15	2
32115-5	Nut - Square	2	60	4	33296-44	Nut - Lock	19	77	4
32120-64	Ring - Snap	18	6	1	353-370	Fitting - Hydraulic 905	18	40	2
32121-10	Pin - Roll	1	28	1	353-371	Fitting - 90°	6	61	2
32121-20	Pin - Roll	1	19	1	353-375	Fitting - 90°	11	19	1
32121-31	Pin - Roll	1	20	2	353-375	Fitting - 90°	8	22	1
32121-45	Pin - Roll	1	7	1	353-385	Fitting - Hydraulic Straight	13	29	2
32121-51	Pin - Roll	3	30	1	353-431	Fitting - 45°	11	16	1
32121-77	Pin Roll	2	59	2	353-511	Fitting	8	17	2
32128-20	Nut - Flange Lock	2	48	2	353-511	Fitting - Hydraulic 90°	18	38	2
32128-20	Nut - Flange Lock	6	67	1	353-545	Fitting	8	18	1
32144-1	Screw - Thread Forming	11	10	2					

PRODUCT CHANGES

In an effort to make improvements available to TORO owners as quickly as possible, minor changes are incorporated into Toro's products from time to time that do not become immediately shown in the Parts Catalog. If such a change has been made in your unit, which is not reflected in your manual, see your TORO Distributor or his Authorized TORO Service Dealer for information and part numbers.

IDENTIFICATION AND ORDERING

MODEL AND SERIAL NUMBERS

The ProLine 120 has two identification numbers; a model number and a serial number. The two numbers are stamped on a plate which is located on the main frame under the seat. In any correspondence concerning the ProLine 120, supply model and serial numbers to assure that correct information and replacement parts are obtained.

To order replacement parts from an Authorized TORO Service Dealer, supply the following information:

1. Model and serial number of the ProLine 120.
2. Part number, description, and the quantity of part(s) desired.

NOTE: Do not order by reference number if a parts catalog is being used; use the PART NUMBER.

TABLE OF CONTENTS

Description	Page	Description	Page
Frame And Steering Assembly	1	Transmission & Differential Assembly	18
Rear Axle Assembly	3	Hydrostatic Transmission Assembly	20
Front Wheel Assembly	4	Differential Assembly	22
Frame And Jackshaft Assembly	5	Engine Kohler Model CH2OQS Spec 64527	
Air Cleaner Assembly	7	Baffles & Shroud	24
Seat Support Assembly	8	Oil Pan/Lubrication	25
Seat Assembly	9	Crankcase	26
Valve Assembly No.54-0090	10	Cylinder Head, Valve & Breather	27
Parking Brake & Frame Assembly	11	Crankshaft, Piston & Rings	28
Hydraulic Lift Cylinder No. 54-0150	12	Carburetor And Fuel Pump	29
Hood, Fuel Tank & Hydraulic Reservoir Assembly	13	Throttle Linkage & Governor Control	30
Engine Assembly	14	Starter	31
Clutch Assembly No. 54-0220	15	Ignition And Charging System	32
Electric Schematic	16	Exhaust	33
Hydraulic Schematic	17	Numeric Index, Toro P/N Only	34

Optional equipment

Description	Model No./Part No.	Description	Model No./Part No.
Flotation Kit	30759	48" Rear Discharge Deck	30747
44" Deck Baffle Kit	60-9030	48" Recycler Deck	30548
52" Deck Baffle Kit	68-7210	52" Side Discharge Deck	30753
44" Leaf Mulcher Deck	30752	44" Grass Collection System	30751
52" Leaf Mulcher Deck	30700	52" Grass Collection System	30576
Wheel Weight Kit	56-6620	Tire Chain Kit	56-6630
44" Snowthrower	30761	Rear Weight	62-6590
44" Side Discharge Deck	30544	Cab Kit	