



Commercial Walk-Behind Mower Floating Deck T-Bar Gear with 48in TURBO FORCE[®] Cutting Unit

Model No. 30098 - 290000001 and up.

Parts Catalog

Ordering Replacement Parts

To order replacement parts, please supply the part number, the quantity, and the description of each part desired.

Understanding Reference Numbers

Each Identified part in an illustration has a reference number. The reference number for a part also appears in the parts list, along with other information about the part.

This catalog uses two special reference number formats, one to indicate parts in a service assembly and another to indicate the quantity of a given part in an illustration.

Service Assembly Reference Numbers

Parts in service assemblies have reference numbers in the form a:b. The a represents the reference number of the entire service assembly and the b represents a sequential number unique to each part within the service assembly.

For example, a wheel assembly might be identified by reference number 6, the tire by 6:1, the valve by 6:2, and the wheel by 6:3. When you order the assembly identified by reference number 6, you receive all parts identified by reference numbers 6:1, 6:2, and 6:3. However, you may also order any part individually. Reference numbers of this type appear in illustrations and in part lists.

Reference Numbers Indicating Quantity

In an illustration, if a reference number indicates more than one part, the reference number has the form nX y. The n represents the quantity of the part, the X is the multiplication symbol, and the y represents the reference number.

For example, in an illustration, the reference number 2X 37 means that two of the parts identified by reference number 37 are indicated.

Contents

| Description | Page | Description | Page |
|--|------|--|------|
| Engine and Clutch Assembly | 3 | Piston and Crankshaft Assembly Kawasaki FH541V-ES30 | 20 |
| Power-Take-Off Idler and Weight Assembly | 4 | Valve and Camshaft Assembly Kawasaki FH541V-ES30 | 21 |
| Fuel System Assembly | 5 | Lubrication Equipment Assembly Kawasaki FH541V-ES30 | 22 |
| Lower Control Assembly | 6 | Cooling Equipment Assembly Kawasaki FH541V-ES30 | 23 |
| Transmission Drive Assembly | 7 | Electric Equipment Assembly Kawasaki FH541V-ES30 | 24 |
| Wheel Drive and Brake Assembly | 8 | Control Equipment Assembly Kawasaki FH541V-ES30 | 25 |
| Upper Handle Assembly | 9 | Carburetor Assembly Kawasaki FH541V-ES30 | 26 |
| Control Panel Assembly | 10 | Air Filter and Muffler Assembly Kawasaki FH541V-ES30 | 27 |
| Carrier Frame Assembly | 11 | Fuel Tank and Valve Assembly Kawasaki FH541V-ES30 | 28 |
| Deck Drive and Baffle Assembly | 12 | Starter Assembly Kawasaki FH541V-ES30 | 29 |
| Deck Assembly No. 112-7082 | 13 | Label Assembly Kawasaki FH541V-ES30 | 30 |
| Spindle Assembly No. 110-0728 | 14 | Attachments and Accessories List | 31 |
| Spindle Assembly No. 110-0729 | 15 | | |
| Lever Assembly No. 107-1664 | 16 | | |
| Deck Assembly | 17 | | |
| Deflector Assembly No. 110-0758 | 18 | | |
| Cylinder and Crankcase Assembly Kawasaki FH541V-ES30 | 19 | | |

Part Description Abbreviations

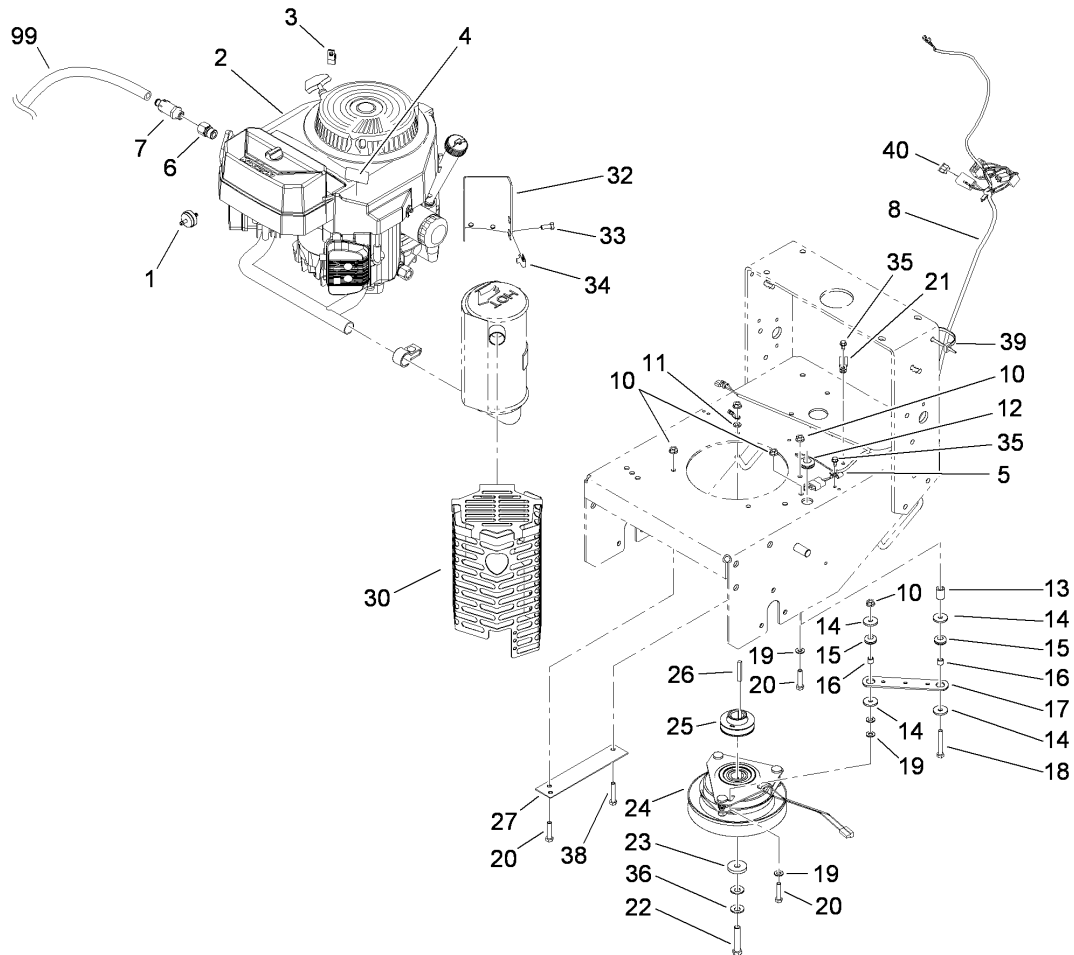
Part descriptions in this catalog may include the following abbreviations.

| | |
|--|--|
| AR. as required | HWHTF. hex washer head thread forming |
| ASM. assembly | HYD. hydraulic |
| BBC. blade brake clutch | LH. left hand |
| CARR. carriage | NI. nylon insert |
| CCW. counter clock wise | NPTF. national pipe thread fine |
| CW. clockwise | PFH. phillips flat head |
| DEG. degrees | PPH. phillips pan head |
| ECM. electronic control module | PPHTF. phillips pan head thread forming |
| EXT. external | PRH. phillips round head |
| FH. flat head | PTH. phillips truss head |
| GA. gauge | PTO. power-take-off |
| HD. heavy-duty | RH. right hand |
| HF. hex flange | ROPS. roll-over protection system |
| HH. hex head | SFH. slotted fillister head |
| HHF. hex head flange | SHH. slotted hex head |
| HHFTF. hex head flange thread forming | SHWH. slotted hex washer head |
| HJ. hex jam | SPH. slotted pan head |
| HLH. hex lag head | SQH. square head |
| HOC. height-of-cut | SRH. slotted round head |
| HSBH. hex socket button head | STD. standard |
| HSFH. hex socket flat head | TAP. self tapping |
| HSH. hex socket head | TTH. torx truss head |
| HWH. hex washer head | |

Footnotes

❶ Not serviced separately

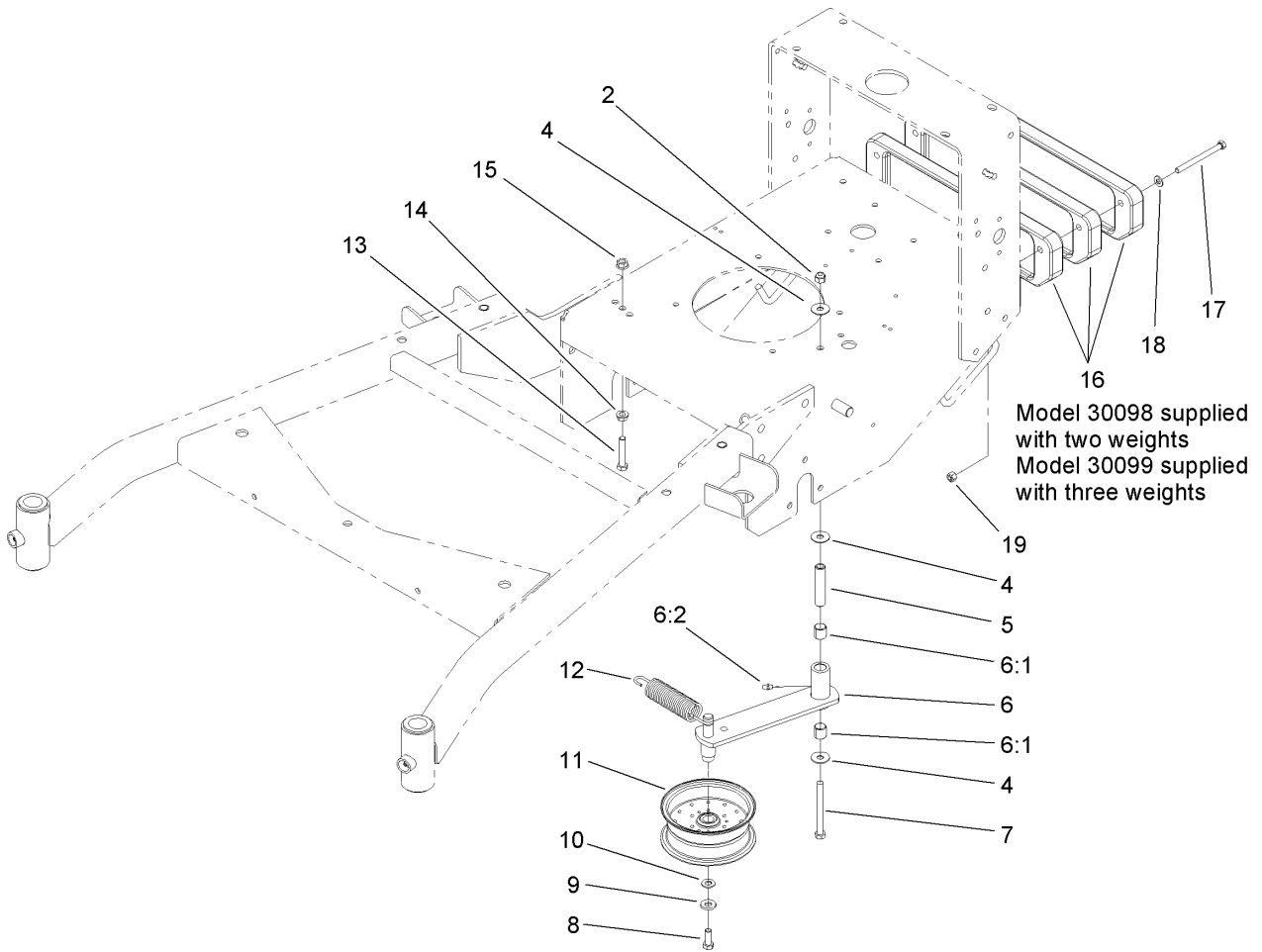
❷ Obtain parts from www.kawpowerepc.com



Engine and Clutch Assembly

| Ref | Part No. | Qty. | Description |
|-------|-------------|------|------------------------------|
| 1 | 56-6360 | 1 | Filter-Fuel |
| ① ② 2 | | 1 | Engine-Kawasaki, FH541V Es30 |
| 3 | 2412-87 | 1 | Clamp-Cable |
| 4 | 106-0699 | 1 | Decal-Warning |
| 5 | 2412-72 | 1 | Clip-Closed, Insulated |
| 6 | 103-1966 | 1 | Adapter |
| 7 | 92-6877 | 1 | Valve-Drain, Oil |
| 8 | 104-8137 | 1 | Harness-Wire |
| 10 | 32128-20 | 6 | Nut-HF |
| 11 | 3255-8 | 1 | Washer-Lock |
| 12 | 112-7069 | 1 | Grommet |
| 13 | 104-6373 | 1 | Tube-Retainer |
| 14 | 1-613235 | 4 | Washer |
| 15 | 1-633630 | 2 | Grommet-Brake |
| 16 | 1-633545 | 2 | Spacer |
| 17 | 1-633543-03 | 1 | Strap-Clutch, Brake |
| 18 | 322-11 | 1 | Screw-HH |
| 19 | 3256-23 | 5 | Washer-Flat |
| 20 | 322-7 | 4 | Screw-HH |
| 21 | 2412-134 | 1 | Clamp-R |
| 22 | 3212-9 | 1 | Screw-HH |
| 23 | 107-4136 | 1 | Washer |
| 24 | 105-2635 | 1 | Clutch / Brake |
| 25 | 107-4112 | 1 | Pulley-Drive |

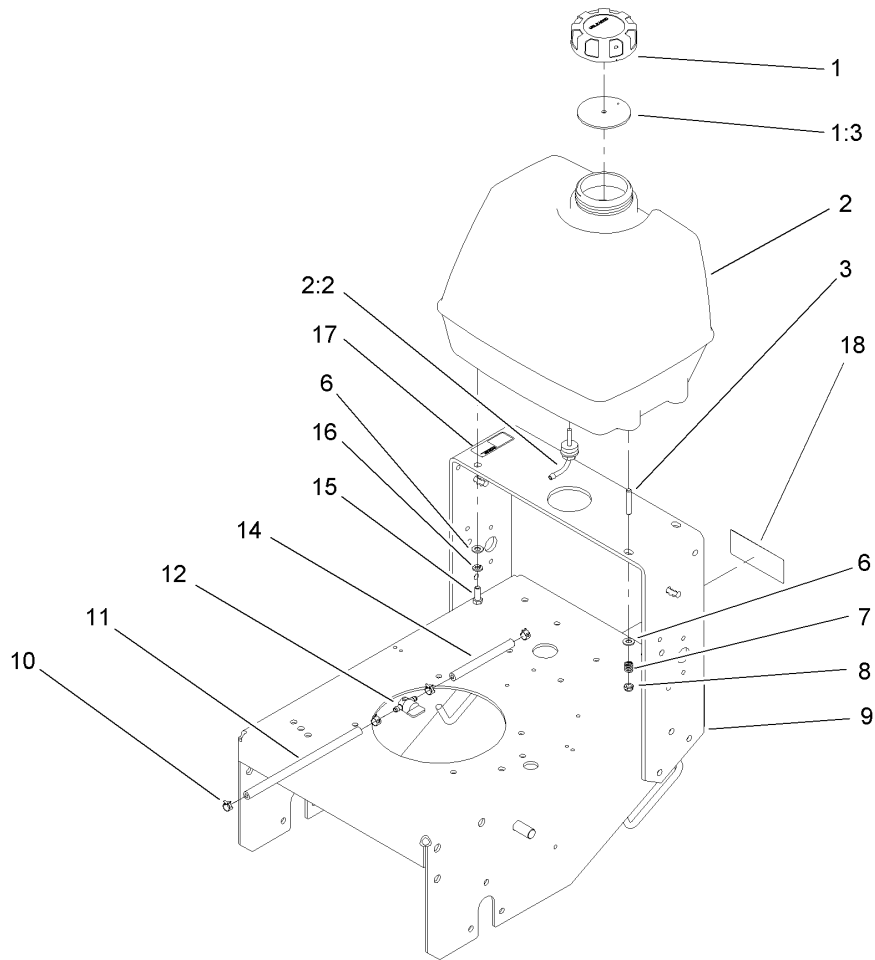
| Ref | Part No. | Qty. | Description |
|-----|-------------|------|-------------------|
| 26 | 608006 | 1 | Key-Square |
| 27 | 94-5847-01 | 1 | Cover-Pulley |
| 30 | 115-4150-03 | 1 | Muffer Shield ASM |
| 32 | 115-4154-03 | 1 | Bracket-Muffer |
| 33 | 322-3 | 4 | Screw-HH |
| 34 | 94-2413 | 4 | U-Nut |
| 35 | 12-3270 | 2 | Screw |
| 36 | 1-603610 | 2 | Washer-Spring |
| 38 | 322-9 | 1 | Screw-HH |
| 39 | 3290-378 | 1 | Tie-Cable |
| 40 | 114241 | 1 | Fuse-7.5 Amp |
| 99 | 103-1964 | 1 | Hose-Drain, Oil |



Power-Take-Off Idler and Weight Assembly

| Ref | Part No. | Qty. | Description |
|-----|-------------|------|-------------------|
| 2 | 3296-39 | 1 | Nut-Lock, NI |
| 4 | 52-2860 | 3 | Washer |
| 5 | 104-6377 | 1 | Tube-Idler |
| 6 | 108-2734 | 1 | Idler Arm ASM |
| 6:1 | 1-513034 | 2 | Sleeve-Bearing |
| 6:2 | 302-5 | 1 | Fitting-Grease |
| 7 | 323-42 | 1 | Screw-HH |
| 8 | 323-6 | 1 | Screw-HH |
| 9 | 98-5975 | 1 | Washer-Belleville |
| 10 | 3256-24 | 1 | Washer-Flat |
| 11 | 1-413099 | 1 | Pulley-Idler |
| 12 | 105-8443 | 1 | Spring-Extension |
| 13 | 323-10 | 1 | Screw-HH |
| 14 | 3290-357 | 1 | Nut-HHF, Whiz |
| 15 | 32128-21 | 1 | Nut-HF |
| 16 | 112-7059-01 | 3 | Weight-Cast |
| 17 | 322-23 | 2 | Screw-HH |
| 18 | 3256-23 | 2 | Washer-Flat |
| 19 | 3296-29 | 2 | Nut-Lock, NI |

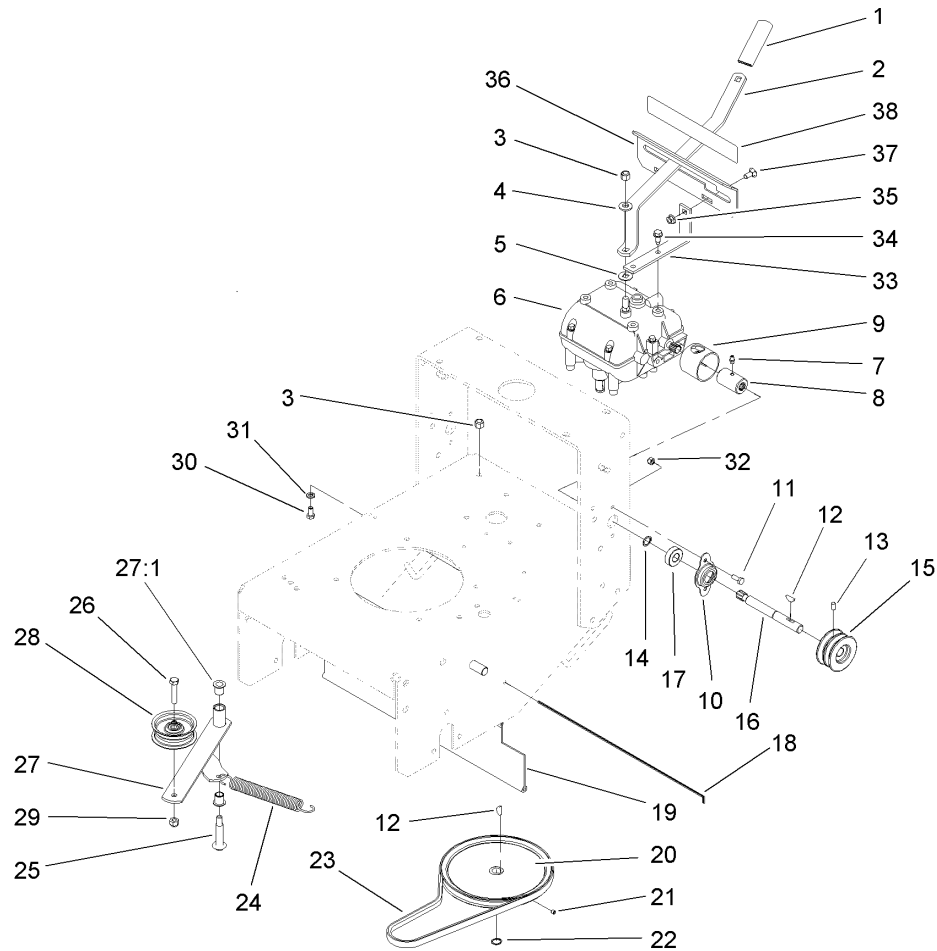
| | | | |
|--|--|--|--|
| | | | |
| | | | |
| | | | |
| | | | |



Fuel System Assembly

| Ref | Part No. | Qty. | Description |
|-----|-------------|------|------------------------|
| 1 | 88-3980 | 1 | Gas Cap ASM |
| 1:3 | 88-4010 | 1 | Gasket-Cap, Gas |
| 2 | 106-0730 | 1 | Fuel Tank ASM |
| 2:2 | 103-2605 | 1 | Fitting-Fuel, Bulkhead |
| 3 | 104-8121 | 2 | Stud-Threaded |
| 6 | 3256-23 | 4 | Washer-Flat |
| 7 | 1-633349 | 2 | Spring-Tank, Fuel |
| 8 | 3296-47 | 2 | Nut-Lock, NI |
| 9 | 108-2675-01 | 1 | Gear Frame ASM |
| 10 | 2412-98 | 4 | Clamp |
| 11 | 110-4894 | 1 | Hose-Fuel |
| 12 | 1-603770 | 1 | Valve-Fuel |
| 14 | 107-0588 | 1 | Hose-Fuel |
| 15 | 322-4 | 2 | Screw-HH |
| 16 | 3253-4 | 2 | Washer-Lock |
| 17 | 95-2814 | 1 | Decal-Shut Off, Fuel |
| 18 | 98-0776 | 1 | Decal-Caution |

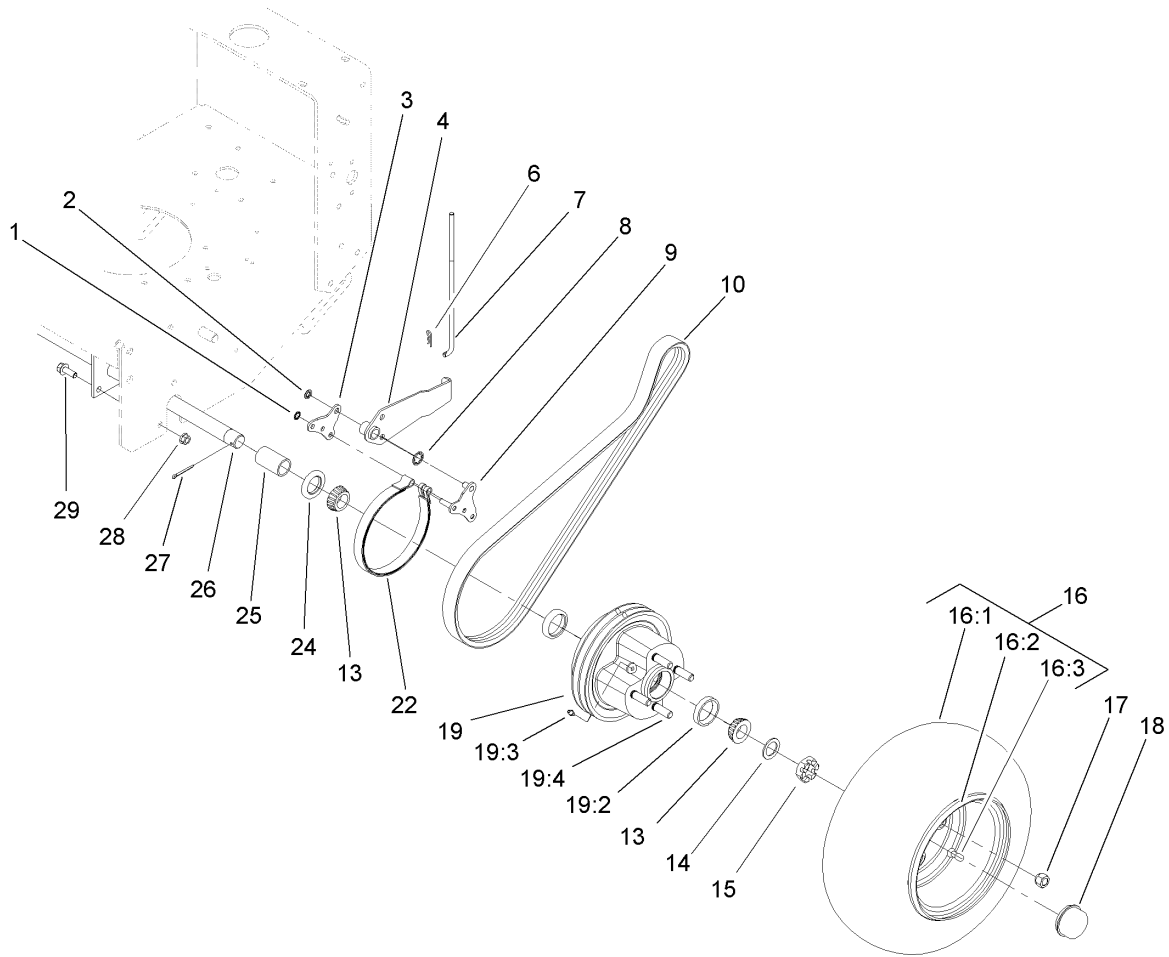
| | | | |
|--|--|--|--|
| | | | |
|--|--|--|--|



Transmission Drive Assembly

| Ref | Part No. | Qty. | Description |
|-----|------------|------|---------------------|
| 1 | 47-1970 | 1 | Grip |
| 2 | 98-3274-03 | 1 | Lever-Shift |
| 3 | 3296-6 | 2 | Nut-Lock |
| 4 | 98-5975 | 1 | Washer-Belleville |
| 5 | 1-323379 | 1 | Washer |
| 6 | 1-323500 | 1 | Transmission |
| 7 | 302-5 | 2 | Fitting-Grease |
| 8 | 1-323680 | 2 | Coupler |
| 9 | 51-4220 | 2 | Guard-Coupler |
| 10 | 1-323254 | 2 | Flange-Output |
| 11 | 321-4 | 4 | Screw-HH |
| 12 | 3257-5 | 3 | Key-Woodruff |
| 13 | 3245-9 | 2 | Screw-Set |
| 14 | 32151-62 | 2 | Ring-Retaining |
| 15 | 105-2698 | 2 | Pulley-Transmission |
| 16 | 104-1102 | 2 | Shaft-Output |
| 17 | 1-323252 | 2 | Bearing-Shaft |
| 18 | 95-1529 | 1 | Rod-Shield |
| 19 | 95-1526 | 1 | Shield-Trailing |
| 20 | 105-5646 | 1 | Pulley-Driven |
| 21 | 3245-1 | 1 | Screw-Set, HSH |
| 22 | 32120-64 | 1 | Ring-Snap, External |
| 23 | 105-5668 | 1 | V-Belt |
| 24 | 80-6610 | 1 | Spring-Extension |

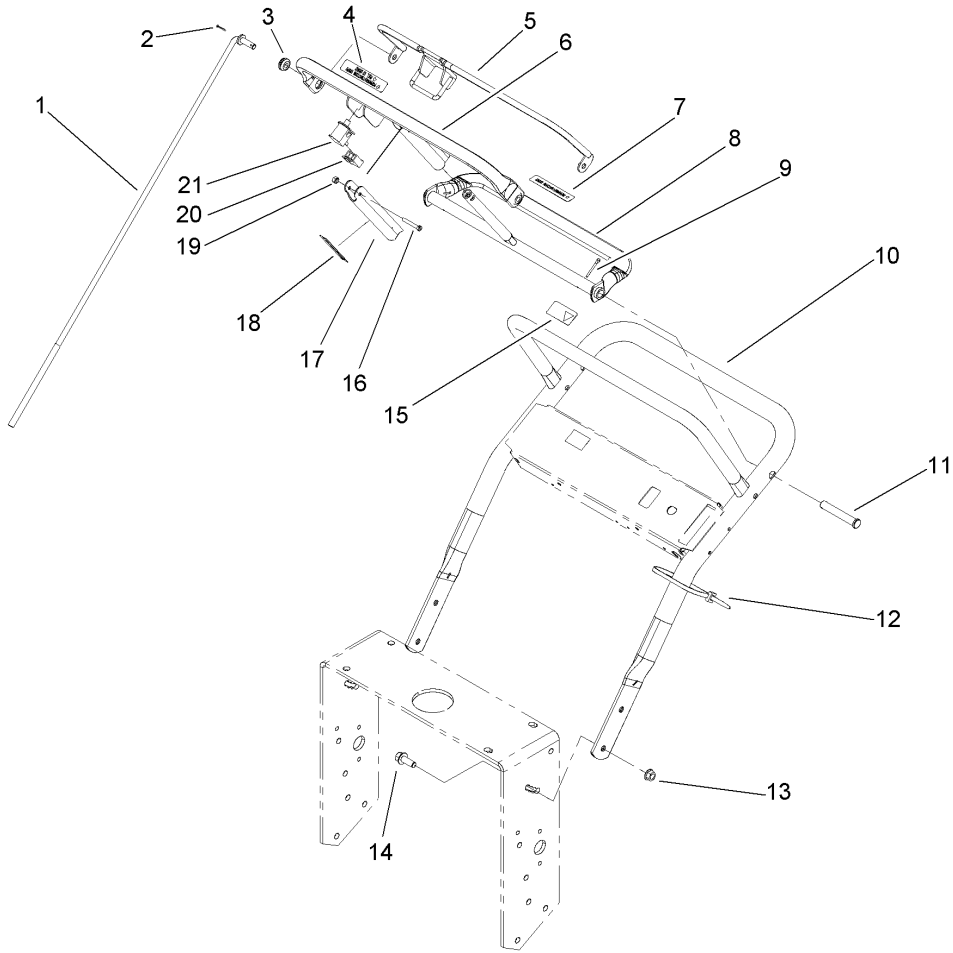
| Ref | Part No. | Qty. | Description |
|------|-------------|------|-----------------------|
| 25 | 27-6230 | 1 | Bolt-Wheel |
| 26 | 323-9 | 1 | Screw-HH |
| 27 | 16-7509 | 1 | Lever-Idler |
| 27:1 | 256-155 | 2 | Bushing-Flange |
| 28 | 62-4540 | 1 | Pulley |
| 29 | 3296-39 | 1 | Nut-Lock, NI |
| 30 | 322-2 | 4 | Screw-HH |
| 31 | 3253-4 | 4 | Washer-Lock |
| 32 | 3296-42 | 4 | Nut-Lock, NI |
| 33 | 1-323389-03 | 2 | Bracket-Plate, Shift |
| 34 | 9264964 | 4 | Screw-HWH, Thread Cut |
| 35 | 32128-20 | 2 | Nut-HF |
| 36 | 1-323387-03 | 1 | Plate-Shift |
| 37 | 3230-1 | 2 | Bolt-CARR |
| 38 | 98-3256 | 1 | Decal-Speed, Ground |



Wheel Drive and Brake Assembly

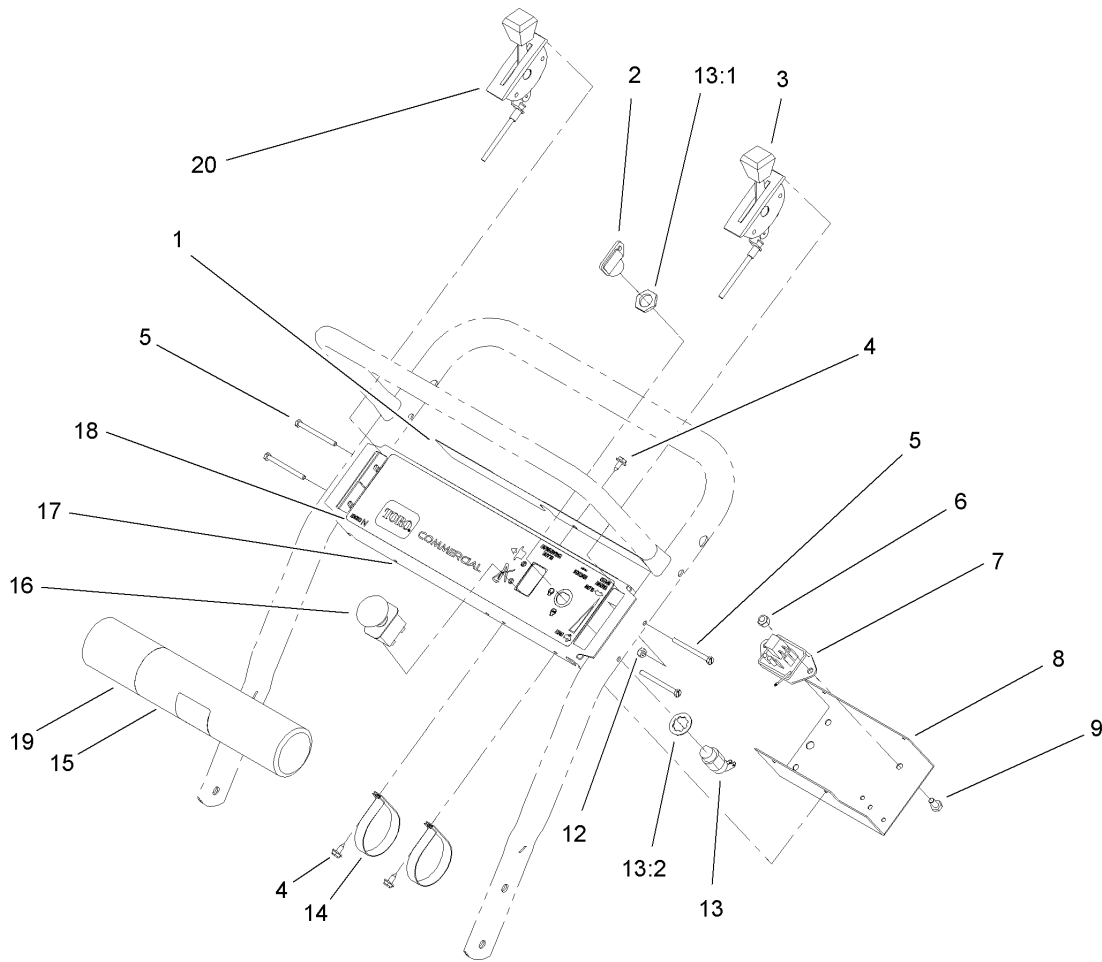
| Ref | Part No. | Qty. | Description |
|------|-------------|------|--------------------------|
| 1 | 32151-72 | 4 | Ring-Retaining |
| 2 | 32151-56 | 2 | Ring-Retaining, External |
| 3 | 106-8792 | 2 | Plate-Link, Brake |
| 4 | 110-5010-01 | 2 | Brake Arm ASM |
| 6 | 3290-307 | 2 | Pin-Hair |
| 7 | 108-2730 | 2 | Rod-Brake |
| 8 | 32151-40 | 2 | Ring-Retaining |
| 9 | 106-8773 | 2 | Brake Link ASM |
| 10 | 108-2723 | 2 | Belt-V, Banded |
| 13 | 1-543509 | 4 | Bearing-Roller, Tapered |
| 14 | 1-523157 | 2 | Washer-Spacer |
| 15 | 1-809082 | 2 | Nut-SHH |
| 16 | 106-0892 | 2 | Wheel And Tire ASM |
| 16:1 | 104-6322 | 1 | Tire |
| 16:2 | 106-0893 | 1 | Wheel |
| 16:3 | 232-27 | 1 | Stem-Valve |
| 17 | 242-50 | 8 | Nut-Lug |
| 18 | 241-119 | 2 | Cap-Dust |
| 19 | 107-4090 | 2 | Wheel Hub ASM |
| 19:2 | 1-543508 | 2 | Cup-Bearing |
| 19:3 | 302-5 | 1 | Fitting-Grease |
| 19:4 | 10-6830 | 4 | Stud-Type, Drive |
| 22 | 1-323262 | 2 | Band-Brake |
| 24 | 1-543511 | 2 | Seal-Grease |

| Ref | Part No. | Qty. | Description |
|-----|-------------|------|--------------|
| 25 | 110-5006 | 2 | Spacer-Wheel |
| 26 | 110-4983-01 | 1 | Axle ASM |
| 27 | 1-806800 | 2 | Pin-Cotter |
| 28 | 32128-21 | 6 | Nut-HF |
| 29 | 3234-11 | 6 | Screw-HHF |



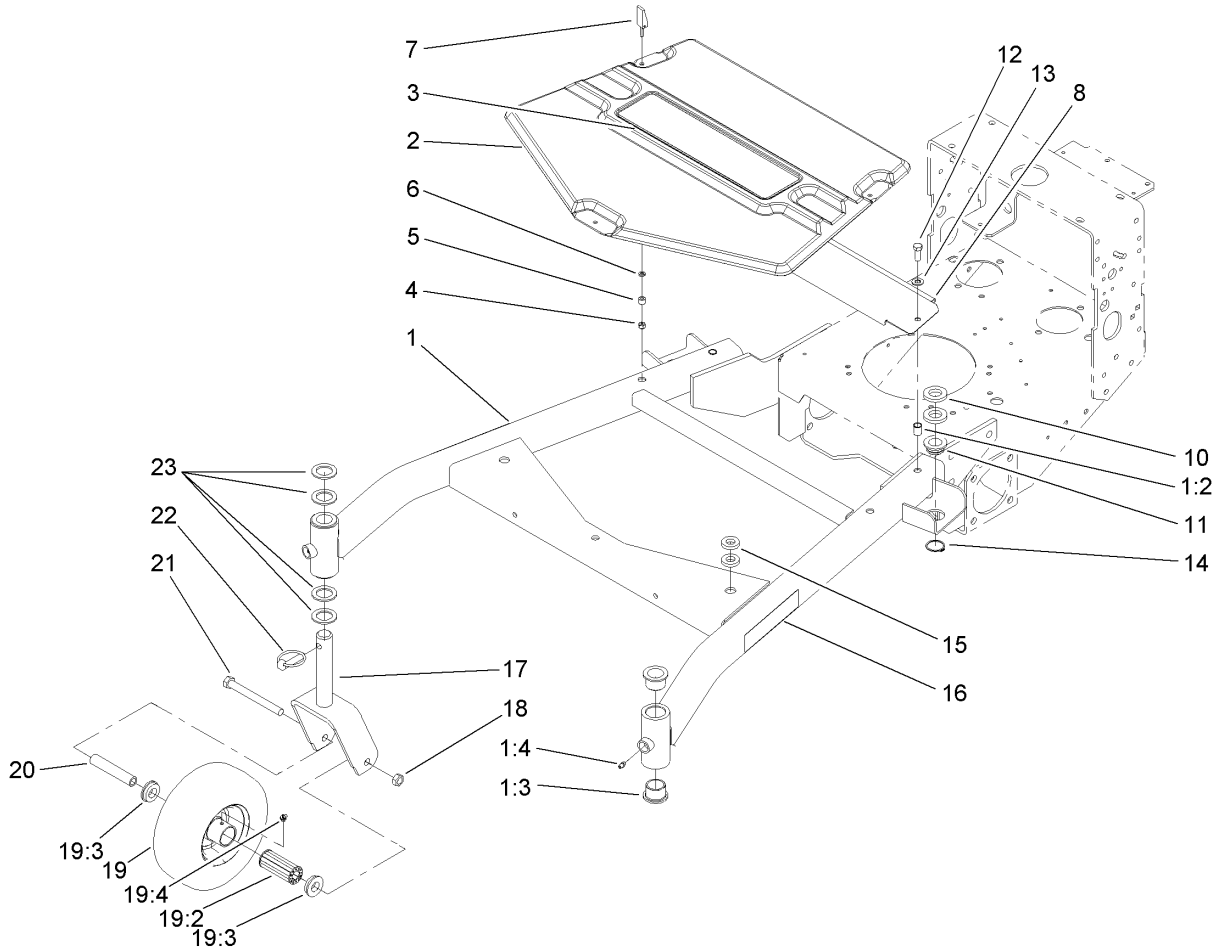
Upper Handle Assembly

| Ref | Part No. | Qty. | Description | | | | |
|-----|-------------|------|-----------------------|--|--|--|--|
| 1 | 105-4677 | 2 | Rod-Control | | | | |
| 2 | 3272-4 | 2 | Pin-Cotter | | | | |
| 3 | 237-141 | 2 | Grommet-Rubber | | | | |
| 4 | 82-2290 | 1 | Decal | | | | |
| 5 | 82-7680-03 | 1 | Bail ASM | | | | |
| 6 | 82-7690-03 | 1 | Bar-Control | | | | |
| 7 | 82-2280 | 1 | Decal | | | | |
| 8 | 106-5477-03 | 1 | Control Pivot ASM | | | | |
| 9 | 3272-11 | 2 | Pin-Cotter | | | | |
| 10 | 105-3158-03 | 1 | Upper Handle ASM | | | | |
| 11 | 283-55 | 2 | Pin-Clevis | | | | |
| 12 | 3290-378 | 2 | Tie-Cable | | | | |
| 13 | 32128-21 | 4 | Nut-HF | | | | |
| 14 | 3234-11 | 4 | Screw-HHF | | | | |
| 15 | 98-4387 | 1 | Decal-Protection, Ear | | | | |
| 16 | 32105-1 | 1 | Screw-SHH | | | | |
| 17 | 51-4850-03 | 1 | Lever-Brake, Parking | | | | |
| 18 | 52-2010 | 1 | Decal-Lever, Parking | | | | |
| 19 | 3296-2 | 1 | Nut-Lock, NI | | | | |
| 20 | 218-595 | 1 | Connector-Body | | | | |
| 21 | 82-2190 | 1 | Switch-Bail | | | | |



Control Panel Assembly

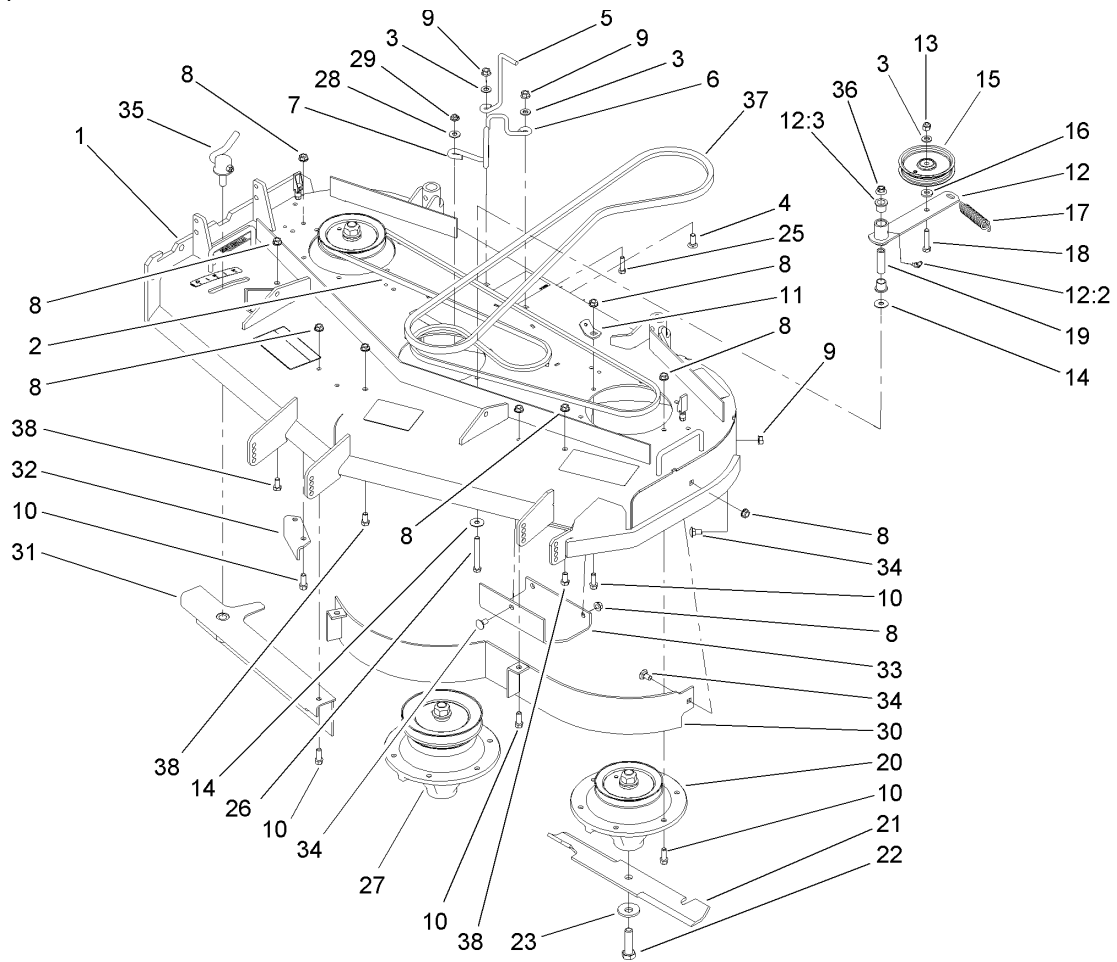
| Ref | Part No. | Qty. | Description |
|------|-------------|------|---------------------|
| 1 | 105-0884 | 1 | Decal-Danger |
| 2 | 63-8360 | 1 | Key-Ignition |
| 3 | 110-4994 | 1 | Cable-Throttle |
| 4 | 32104-76 | 4 | Screw |
| 5 | 32105-14 | 4 | Screw-SHH |
| 6 | 3296-42 | 1 | Nut-Lock, NI |
| 7 | 104-8141 | 1 | Module-Delay |
| 8 | 93-1187-03 | 1 | Panel-Bottom |
| 9 | 321-2 | 1 | Screw-HH |
| 12 | 3296-2 | 4 | Nut-Lock, NI |
| 13 | 29-5560 | 1 | Switch-On / Off |
| 13:1 | 218-461 | 1 | Nut-HH |
| 13:2 | 3254-5 | 1 | Washer-Tooth |
| 14 | 2412-120 | 2 | R-Clamp |
| 15 | 104-7050 | 1 | Tube-Manual |
| 16 | 104-8140 | 1 | Switch-PTO |
| 17 | 110-4982-03 | 1 | Panel-Control |
| 18 | 110-4971 | 1 | Decal-Control Panel |
| 19 | 104-7048 | 1 | Cap-Housing |
| 20 | 110-4995 | 1 | Cable-Choke |



Carrier Frame Assembly

| Ref | Part No. | Qty. | Description |
|------|-------------|------|----------------------|
| 1 | 108-2665 | 1 | Carrier Frame ASM |
| 1:2 | 32148-9 | 2 | Insert-Nut |
| 1:3 | 94-1291 | 4 | Bushing |
| 1:4 | 302-5 | 2 | Fitting-Grease |
| 2 | 108-6625 | 1 | Cover-Frame, Carrier |
| 3 | 112-9712 | 1 | Decal |
| 4 | 1-804254 | 3 | Nut |
| 5 | 106-6778 | 3 | Bushing-Latch, Swell |
| 6 | 99-3058 | 3 | Washer |
| 7 | 106-6777 | 3 | Handle-Latch, Swell |
| 8 | 112-7051-01 | 1 | Shield-Belt |
| 10 | 104-1105 | 4 | Spacer-Support, Deck |
| 11 | 1-513336 | 2 | Bushing-Deck |
| 12 | 323-6 | 2 | Screw-HH |
| 13 | 3256-24 | 2 | Washer-Flat |
| 14 | 32120-33 | 2 | Ring-Retaining |
| 15 | 1-323539 | 4 | Spacer |
| 16 | 106-0635 | 2 | Decal-HOC |
| 17 | 105-3159-01 | 2 | Castor Fork ASM |
| 18 | 32153-5 | 2 | Nut-Lock, Side |
| 19 | 110-5024 | 2 | Wheel And Tire ASM |
| 19:2 | 112-7066 | 1 | Bearing-Roller |
| 19:3 | 1-513810 | 2 | Bushing |
| 19:4 | 302-61 | 1 | Zerk |

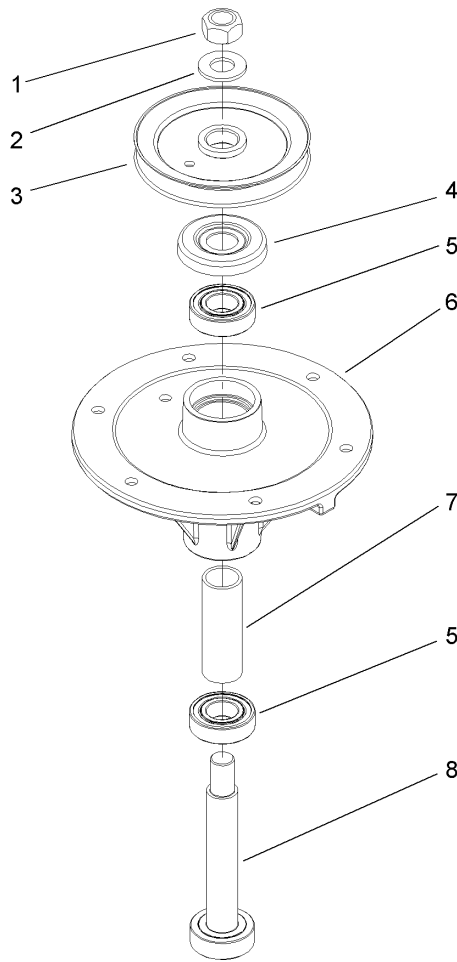
| Ref | Part No. | Qty. | Description |
|-----|----------|------|-----------------|
| 20 | 100-6453 | 2 | Bushing-Spanner |
| 21 | 325-19 | 2 | Screw-HH |
| 22 | 283-71 | 2 | Pin-Lynch |
| 23 | 3-6781 | 8 | Washer-Thrust |



Deck Drive and Baffle Assembly

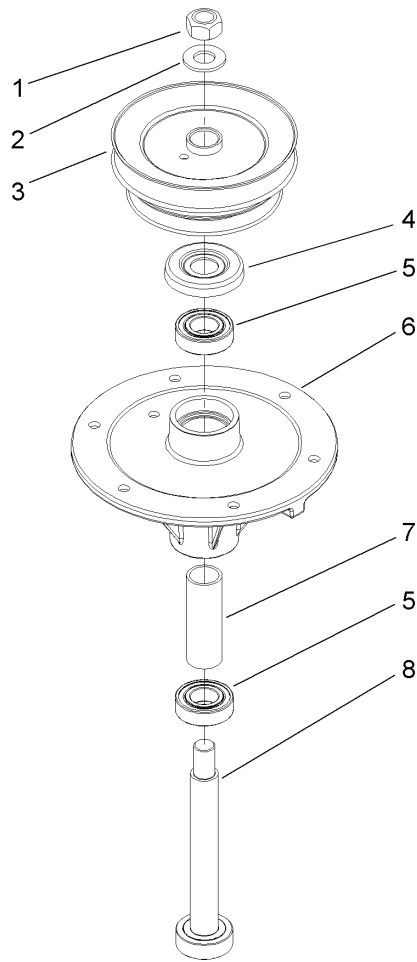
| Ref | Part No. | Qty. | Description |
|------|-------------|------|-----------------------------|
| 1 | 112-7082 | 1 | Deck ASM |
| 2 | 108-2716 | 1 | Belt-V |
| 3 | 3256-24 | 3 | Washer-Flat |
| 4 | 3231-22 | 2 | Screw-CARR |
| 5 | 98-5980 | 1 | Guide-Belt |
| 6 | 110-6975 | 1 | Guide-Belt |
| 7 | 105-0850 | 1 | Guide-Belt |
| 8 | 3290-357 | 29 | Nut-HHF, Whiz |
| 9 | 32128-21 | 5 | Nut-HF |
| 10 | 92-1624 | 22 | Screw-HWH |
| 11 | 104-6374 | 1 | Plate-Spring |
| 12 | 108-2728 | 1 | Idler Arm ASM |
| 12:2 | 302-11 | 1 | Fitting-Lube, 45 DEG |
| 12:3 | 256-90 | 2 | Bushing-Flange |
| 13 | 3296-39 | 1 | Nut-Lock, NI |
| 14 | 52-2860 | 2 | Washer |
| 15 | 93-1622 | 1 | Pulley-Idler |
| 16 | 9202414 | 1 | Washer-Spacer |
| 17 | 51-3650 | 1 | Spring-Extension |
| 18 | 323-9 | 1 | Screw-HH |
| 19 | 112-7091 | 1 | Spacer |
| 20 | 110-0728 | 2 | Spindle ASM |
| 21 | 107-3192-03 | 3 | Blade-16.5 Inch (High Flow) |
| 22 | 51-4060 | 3 | Screw-Blade |

| Ref | Part No. | Qty. | Description |
|-----|-------------|------|--------------------------|
| 23 | 103-0865 | 3 | Washer-Blade Bolt, Heavy |
| 25 | 322-6 | 1 | Screw-HH |
| 26 | 323-14 | 1 | Screw-HH |
| 27 | 110-0729 | 1 | Spindle ASM |
| 28 | 3256-3 | 1 | Washer-Flat |
| 29 | 32128-13 | 1 | Nut-HF |
| 30 | 110-0735-03 | 1 | Baffle ASM |
| 31 | 108-6698-03 | 1 | Adjustable Baffle ASM |
| 32 | 110-0744-01 | 1 | Baffle-Discharge |
| 33 | 107-3166-01 | 1 | Skid |
| 34 | 3231-1 | 7 | Screw-CARR |
| 35 | 107-1664 | 1 | Lever ASM |
| 36 | 32128-19 | 1 | Nut-HF |
| 37 | 108-2715 | 1 | Belt-V |
| 38 | 323-4 | 3 | Screw-HH |



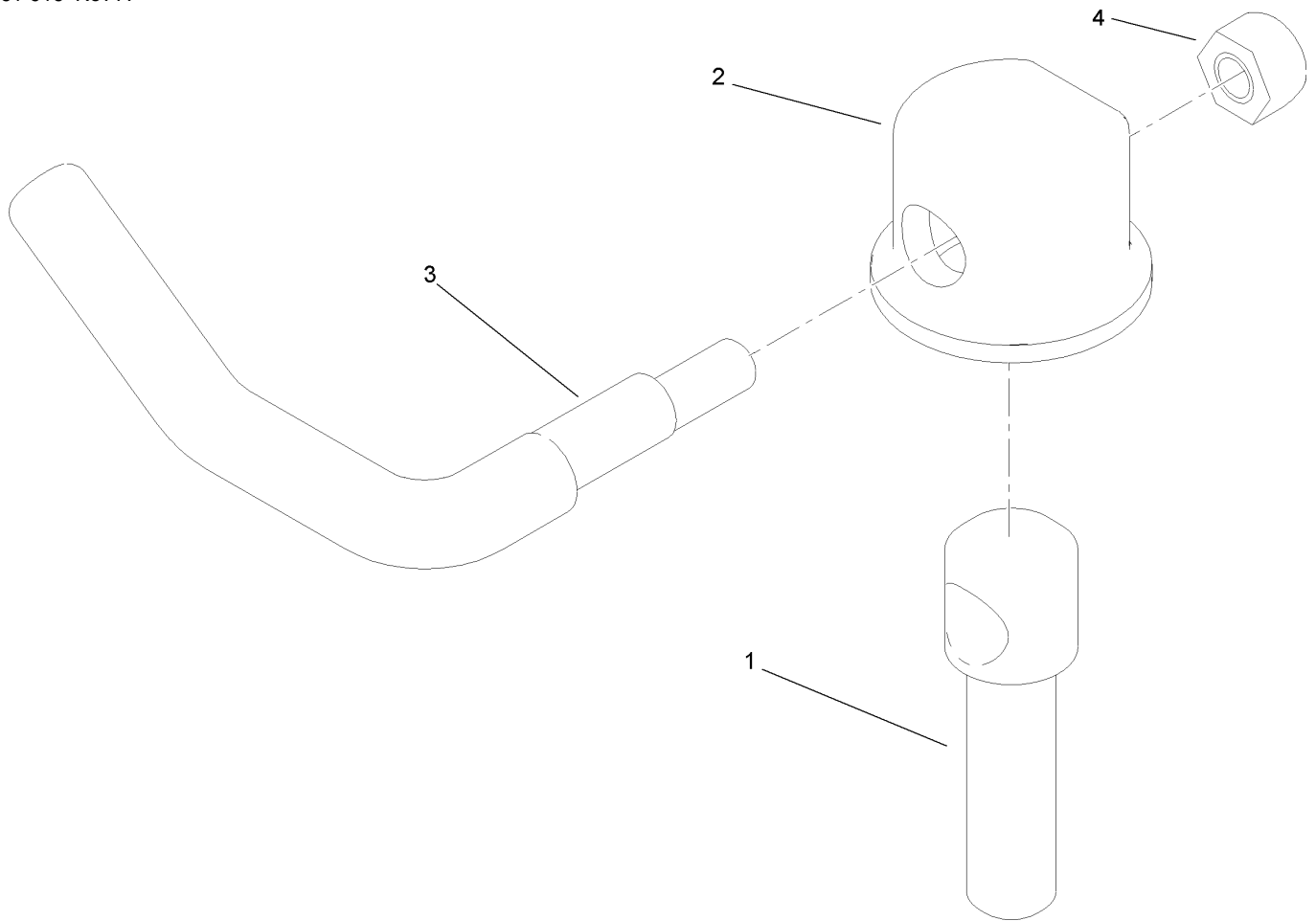
Spindle Assembly No. 110-0728

| Ref | Part No. | Qty. | Description | | | | |
|-----|----------|------|-----------------|--|--|--|--|
| 1 | 3219-7 | 1 | Nut-Hex | | | | |
| 2 | 7-4150 | 1 | Washer | | | | |
| 3 | 104-1181 | 1 | Pulley ASM | | | | |
| 4 | 106-0873 | 1 | Shield-Bearing | | | | |
| 5 | 104-6325 | 2 | Bearing-Ball | | | | |
| 6 | 108-6696 | 1 | Housing-Spindle | | | | |
| 7 | 110-0727 | 1 | Spacer-Bearing | | | | |
| 8 | 110-0726 | 1 | Shaft-Spindle | | | | |



Spindle Assembly No. 110-0729

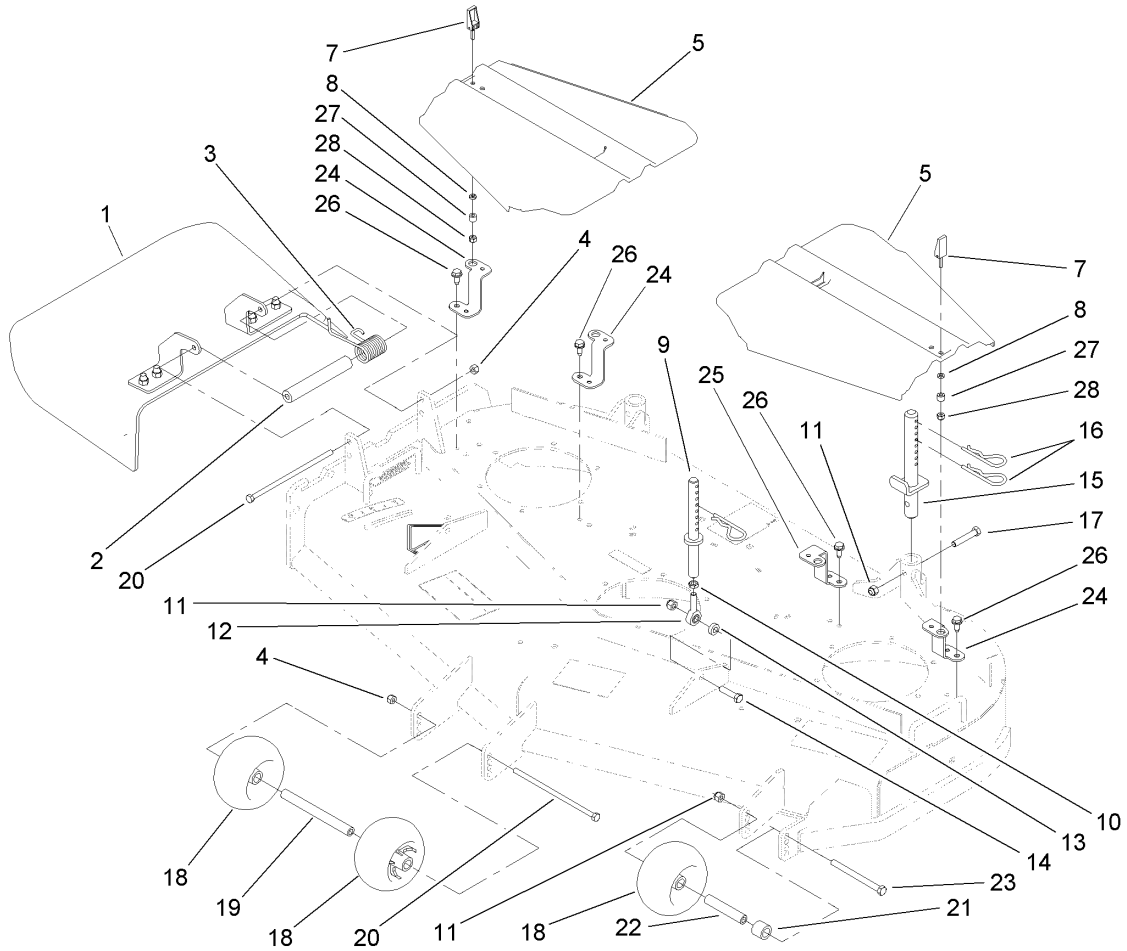
| Ref | Part No. | Qty. | Description | |
|-----|----------|------|--------------------|--|
| 1 | 3219-7 | 1 | Nut-Hex | |
| 2 | 7-4150 | 1 | Washer | |
| 3 | 108-2713 | 1 | Pulley And Hub ASM | |
| 4 | 106-0873 | 1 | Shield-Bearing | |
| 5 | 104-6325 | 2 | Bearing-Ball | |
| 6 | 108-6696 | 1 | Housing-Spindle | |
| 7 | 110-0727 | 1 | Spacer-Bearing | |
| 8 | 110-0725 | 1 | Shaft-Spindle | |



Lever Assembly No. 107-1664

| Ref | Part No. | Qty. | Description |
|-----|----------|------|--------------|
| 1 | 106-3239 | 1 | Screw-Lock |
| 2 | 107-1644 | 1 | Cap-Lock |
| 3 | 106-3241 | 1 | Lever-Lock |
| 4 | 3296-29 | 1 | Nut-Lock, NI |

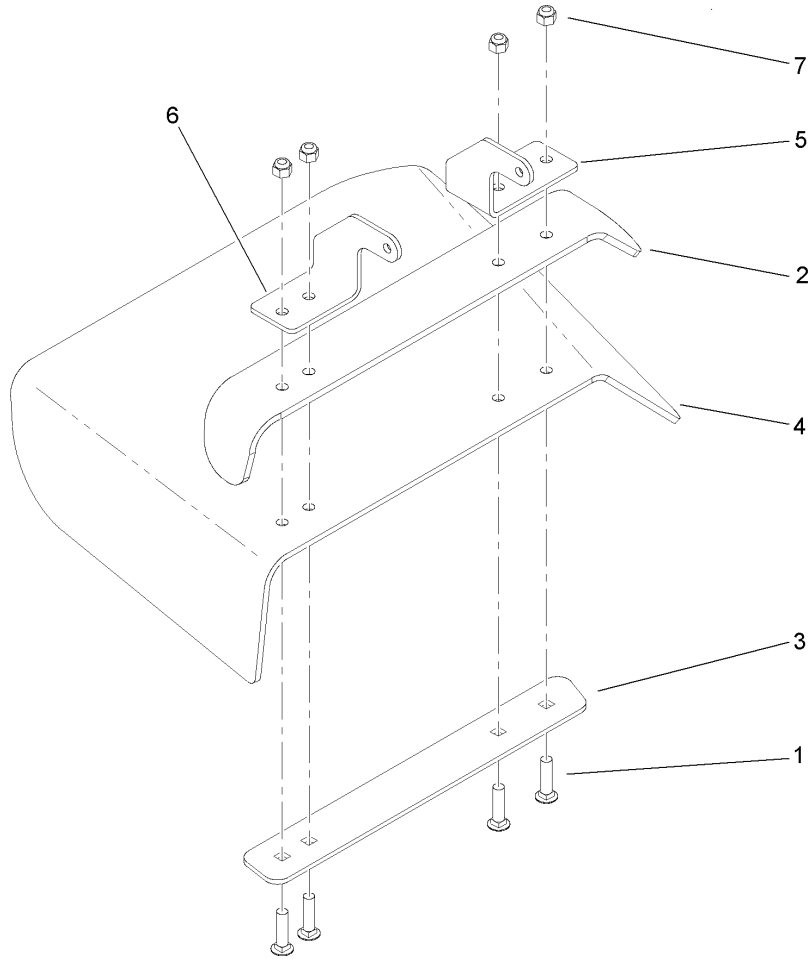
| Ref | Part No. | Qty. | Description |
|-----|----------|------|-------------|
| | | | |
| | | | |
| | | | |
| | | | |



Deck Assembly

| Ref | Part No. | Qty. | Description |
|-----|-------------|------|---------------------|
| 1 | 110-0758 | 1 | Deflector ASM |
| 2 | 105-4622 | 1 | Spacer |
| 3 | 104-8554 | 1 | Spring-Torsion |
| 4 | 3296-29 | 2 | Nut-Lock, NI |
| 5 | 107-8536 | 2 | Cover-Belt |
| 7 | 106-6777 | 2 | Handle-Latch, Swell |
| 8 | 99-3058 | 2 | Washer |
| 9 | 108-2674 | 2 | Front Pin ASM |
| 10 | 3220-3 | 2 | Nut-HJ |
| 11 | 3296-39 | 5 | Nut-Lock, NI |
| 12 | 1-613204 | 2 | Balljoint |
| 13 | 104-1156 | 2 | Spacer |
| 14 | 323-8 | 2 | Screw-HH |
| 15 | 110-2086 | 2 | Rear Pin ASM |
| 16 | 3290-256 | 6 | Pin-Hair |
| 17 | 323-10 | 2 | Screw-HH |
| 18 | 1-603299 | 3 | Roller-Scalp, Anti |
| 19 | 98-5967 | 1 | Spacer-Wheel |
| 20 | 322-50 | 2 | Screw-HH |
| 21 | 98-7913 | 1 | Tube-Spacer |
| 22 | 98-7912 | 1 | Tube-Spanner |
| 23 | 323-23 | 1 | Screw-HH |
| 24 | 108-2698-01 | 3 | Bracket-Cover |
| 25 | 108-2699-01 | 1 | Bracket-Cover |

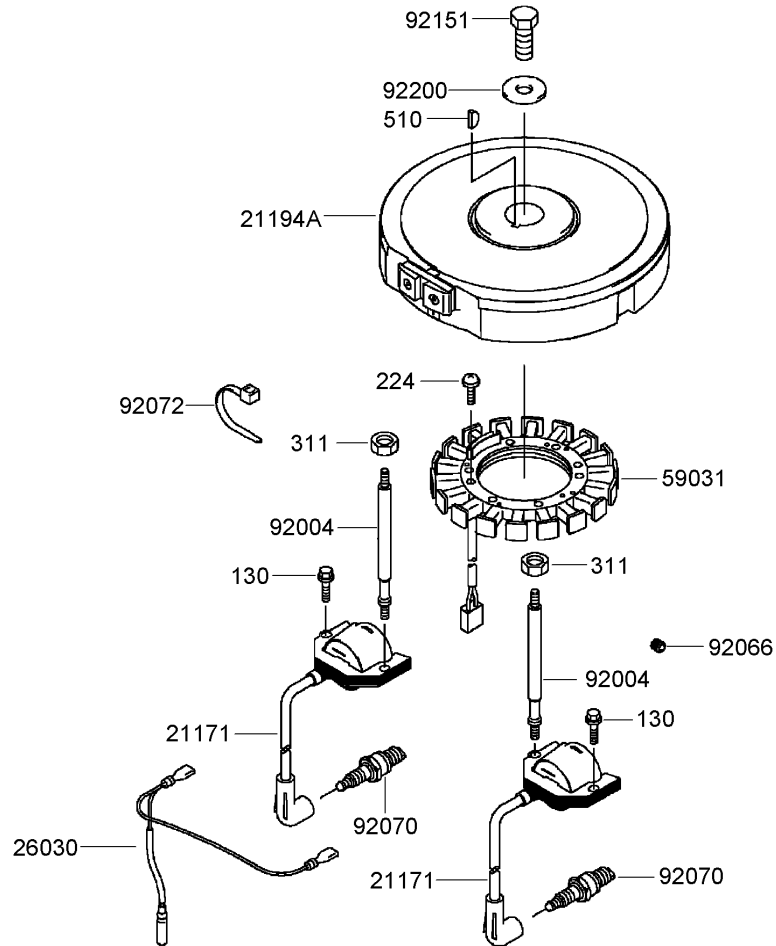
| Ref | Part No. | Qty. | Description |
|-----|----------|------|----------------------|
| 26 | 32144-70 | 4 | Screw-HWHTF |
| 27 | 106-6778 | 2 | Bushing-Latch, Swell |
| 28 | 1-804254 | 2 | Nut |



Deflector Assembly No. 110-0758

| Ref | Part No. | Qty. | Description |
|-----|-------------|------|----------------------|
| 1 | 3231-4 | 4 | Screw-CARR |
| 2 | 106-3246-01 | 1 | Deflector |
| 3 | 106-3248-03 | 1 | Strap-Discharge |
| 4 | 110-0759 | 1 | Deflector-Rubber |
| 5 | 107-4197-01 | 1 | Bracket-Hinge, Rear |
| 6 | 107-4196-01 | 1 | Bracket-Hinge, Front |
| 7 | 3296-39 | 4 | Nut-Lock, NI |

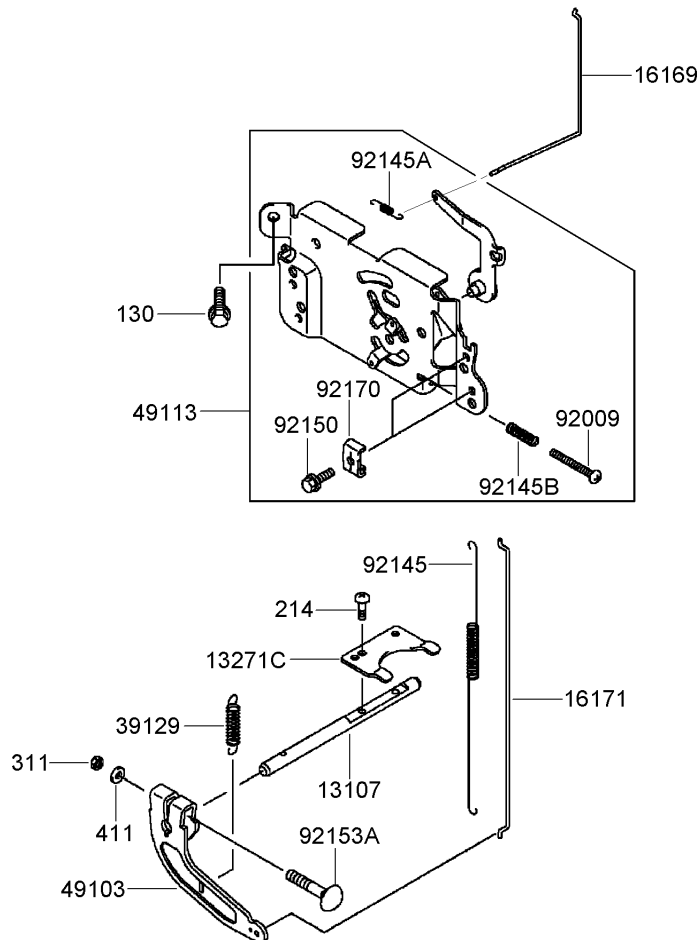
| | | | |
|--|--|--|--|
| | | | |
|--|--|--|--|



Electric Equipment Assembly Kawasaki FH541V-ES30

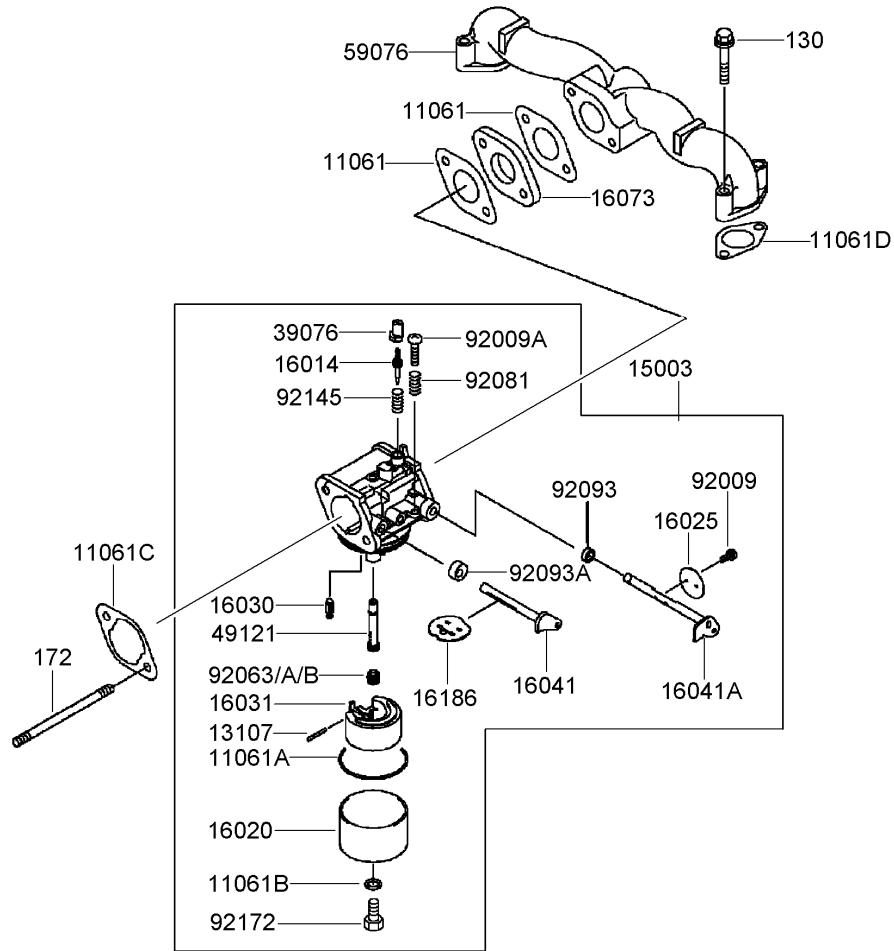
| Ref | Part No. | Qty. | Description |
|--------|------------|------|-------------------------------|
| 21171 | 21171-7013 | 2 | Ignition Coil ASM |
| 21194A | 21194-7026 | 1 | Flywheel |
| 26030 | 26030-7001 | 1 | Harness |
| 59031 | 59031-7002 | 1 | Coil-Charging |
| 92004 | 92004-7009 | 2 | Stud |
| 92066 | 92066-7002 | 1 | Plug |
| 92070 | 92070-7003 | 2 | Spark Plug (R C J 8 Y, Solid) |
| 92072 | 92072-7003 | 2 | Band |
| 92151 | 92151-2097 | 1 | Bolt (12X30) |
| 92200 | 92200-7002 | 1 | Washer |
| 130 | 130B0620 | 2 | Bolt-Flanged (6X20) |
| 224 | 224B0520 | 4 | Screw-Pan (5X20) |
| 311 | 311B0600 | 2 | Nut-Hex (6Mm) |
| 510 | 510A5100 | 1 | Key-Woodruff |

| | | | |
|--|--|--|--|
| | | | |
|--|--|--|--|



Control Equipment Assembly Kawasaki FH541V-ES30

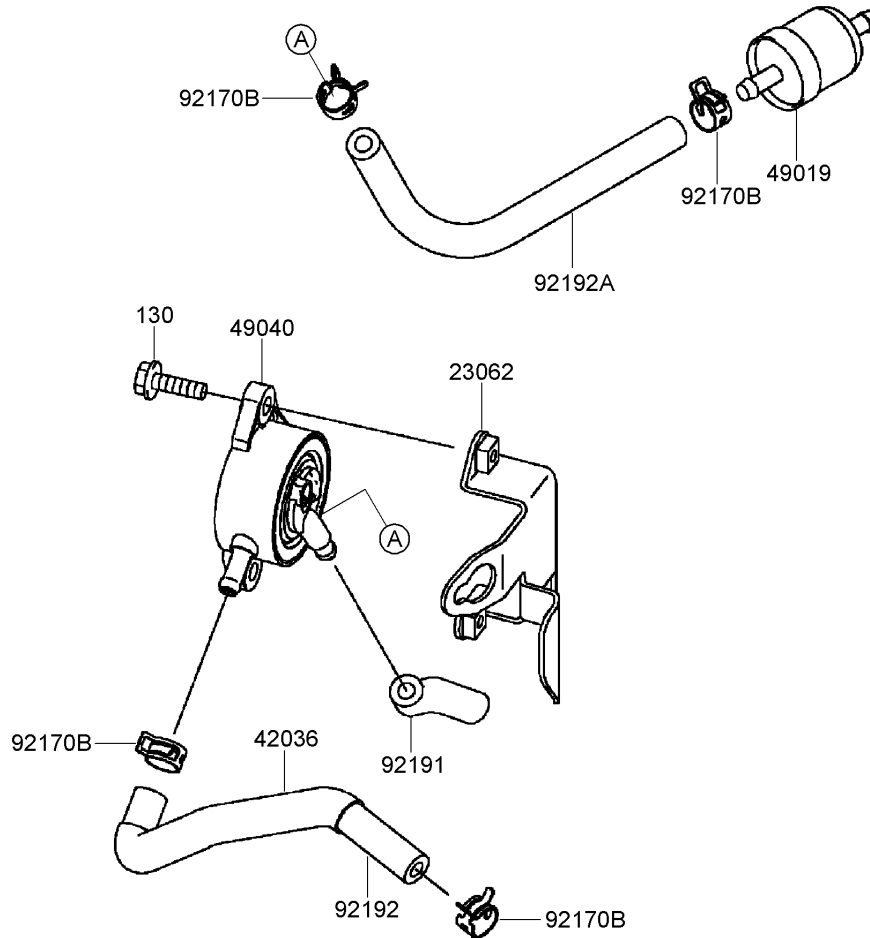
| Ref | Part No. | Qty. | Description |
|---------|------------|------|---------------------|
| ②13107 | 13107-7010 | 1 | Shaft |
| ②13271C | 13271-7032 | 1 | Plate |
| ②16169 | 16169-7010 | 1 | Link-Choke |
| ②16171 | 16171-7001 | 1 | Link |
| ②39129 | 39129-7003 | 1 | Spring-Governor |
| ②49103 | 49103-7004 | 1 | Arm-Governor |
| ②49113 | 49113-7024 | 1 | Panel-Control |
| ②92009 | 92009-7007 | 1 | Screw (4X35) |
| ②92145 | 92145-7003 | 1 | Spring |
| ②92145A | 92145-7004 | 1 | Spring |
| ②92145B | 92145-7005 | 1 | Spring |
| ②92150 | 92150-2182 | 1 | Bolt (5X18) |
| ②92153A | 92153-7033 | 1 | Bolt (6X35) |
| ②92170 | 92170-7001 | 1 | Clamp |
| ②130 | 130B0612 | 2 | Bolt-Flanged (6X12) |
| ②214 | 214B0408 | 2 | Screw-Pan (4X8) |
| ②311 | 311B0600 | 1 | Nut-Hex (6Mm) |
| ②411 | 411B0600 | 1 | Washer-Plain (6Mm) |



Carburetor Assembly Kawasaki FH541V-ES30

| Ref | Part No. | Qty. | Description |
|-----|----------|------|----------------------------|
| ② | 11061 | 2 | Gasket-Insulator |
| ② | 11061A | 1 | Gasket-Chamber |
| ② | 11061B | 1 | Gasket-Screw |
| ② | 11061C | 1 | Gasket-Cleaner, Air |
| ② | 11061D | 2 | Gasket |
| ② | 13107 | 1 | Shaft |
| ② | 15003 | 1 | Carburetor ASM |
| ② | 16014 | 1 | Screw-Air, Pilot |
| ② | 16020 | 1 | Chamber-Float |
| ② | 16025 | 1 | Valve-Throttle |
| ② | 16030 | 1 | Valve-Float |
| ② | 16031 | 1 | Float |
| ② | 16041 | 1 | Shaft-Choke, Carburetor |
| ② | 16041A | 1 | Shaft-Throttle, Carburetor |
| ② | 16073 | 1 | Insulator |
| ② | 16186 | 1 | Choke Valve ASM |
| ② | 39076 | 1 | Limiter |
| ② | 49121 | 1 | Nozzle-Main |
| ② | 59076 | 1 | Manifold-Intake |
| ② | 92009 | 2 | Screw |
| ② | 92009A | 1 | Screw |
| ② | 92063 | 1 | Jet-Main No. 110 |
| ② | 92063A | 1 | Jet-Main, No. 112 |
| ② | 92063B | 1 | Jet-Main, No. 108 |

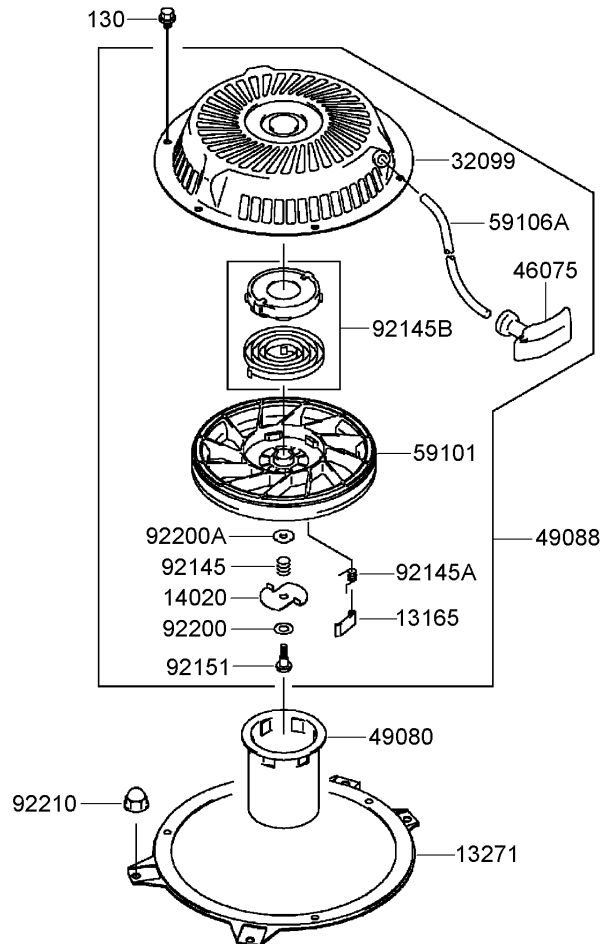
| Ref | Part No. | Qty. | Description |
|-----|----------|------|---------------------|
| ② | 92081 | 1 | Spring |
| ② | 92093 | 1 | Seal |
| ② | 92093A | 1 | Seal |
| ② | 92145 | 1 | Spring |
| ② | 92172 | 1 | Screw |
| ② | 130 | 4 | Bolt-Flanged (6X35) |
| ② | 172 | 2 | Bolt-Stud (6X90) |



Fuel Tank and Valve Assembly Kawasaki FH541V-ES30

| Ref | Part No. | Qty. | Description |
|----------|---------------|------|----------------------|
| ② 23062 | 23062-7004-9H | 1 | Bracket |
| ② 42036 | 42036-7012 | 1 | Sleeve |
| ② 49019 | 49019-7001 | 1 | Filter-Fuel |
| ② 49040 | 49040-7001 | 1 | Pump-Fuel |
| ② 92170B | 92170-2088 | 4 | Clamp |
| ② 92191 | 92191-7002 | 1 | Tube |
| ② 92192 | 92192-7035 | 1 | Tube (6.35X12.7X170) |
| ② 92192A | 92192-7037 | 1 | Tube (6.35X12.7X160) |
| ② 130 | 130B0620 | 2 | Bolt-Flanged (6X20) |

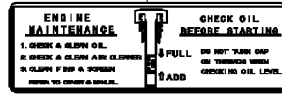
| | | | |
|--|--|--|--|
| | | | |
|--|--|--|--|



Starter Assembly Kawasaki FH541V-ES30

| Ref | Part No. | Qty. | Description | | | | |
|----------|---------------|------|----------------------|--|--|--|--|
| ② 13165 | 13165-7001 | 2 | Pawl-Starter, Recoil | | | | |
| ② 13271 | 13271-7003-9H | 1 | Plate | | | | |
| ② 14020 | 14020-7001 | 1 | Retainer | | | | |
| ② 32099 | 32099-7002 | 1 | Case-Starter, Recoil | | | | |
| ② 46075 | 46075-7001 | 1 | Grip-Starter, Recoil | | | | |
| ② 49080 | 49080-7001 | 1 | Pulley-Starting | | | | |
| ② 49088 | 49088-7013 | 1 | Starter-Recoil | | | | |
| ② 59101 | 59101-7001 | 1 | Reel-Starter, Recoil | | | | |
| ② 59106A | 59106-7005 | 1 | Rope | | | | |
| ② 92145 | 92145-7006 | 1 | Spring | | | | |
| ② 92145A | 92145-7007 | 2 | Spring | | | | |
| ② 92145B | 92145-7008 | 1 | Spring | | | | |
| ② 92151 | 92151-7008 | 1 | Bolt | | | | |
| ② 92200 | 92200-7004 | 1 | Washer | | | | |
| ② 92200A | 92200-7005 | 1 | Washer | | | | |
| ② 92210 | 92210-0003 | 4 | Nut | | | | |
| ② 130 | 130B0608 | 3 | Bolt-Flanged (6X8) | | | | |

56033A



56070



56080



56080A



**Label Assembly
Kawasaki FH541V-ES30**

| Ref | Part No. | Qty. | Description |
|---------|------------|------|---------------|
| ②56033A | 56033-7003 | 1 | Label-Manual |
| ②56070 | 56070-7001 | 1 | Label-Warning |
| ②56080 | 56080-2077 | 1 | Label-Brand |
| ②56080A | 56080-7023 | 1 | Label-Brand |

Attachments and Accessories

For 30098 - Commercial Walk-Behind Mower, Floating Deck T-Bar Gear with 48in TURBO FORCE Cutting Unit

| Product Name | Model/Part |
|---|-------------------|
| Blade-Low Flow, 16.5 Inch | 107-3193-03 |
| Blade-Mid Flow, 16.5 Inch | 107-3194-03 |
| Blade-Atomic, 16.5 Inch | 107-3195-03 |
| Blade-Recycling, 16.5 Inch | 107-3196-03 |
| Bagging Enhancement Kit | 108-4091 |
| Blade-Hi Flow, 16.5 Inch (6 Pack) | 110-0414 |
| Blade-Lo Flow, 16.5 Inch (6 Pack) | 110-0415 |
| Blade-Recycler, 16.5 Inch (6 Pack) | 110-0416 |
| Blade-Atomic, 16.5 Inch (6 Pack) | 110-0417 |
| Blade-Mid Flow, 16.5 Inch (6 Pack) | 110-0418 |
| 48 Inch Recycler Kit | 110-2060 |
| Weight-Cast | 112-7059-01 |
| Weight Kit | 112-9971 |
| Trim Side Anti-Scalp Roller Kit | 115-1015 |
| Discharge Side Anti-Scalp Roller Kit | 115-1016 |
| Operator-Controlled Discharge Chute Kit | 115-4195 |
| Soft Bag (3 Bushel) | 30104 |
| Tru Trak Sulky | 30110 |

