



Count on it.

Parts Catalog

**Commercial Walk-Behind Mower
Floating Deck T-Bar Gear**

with 52in TURBO FORCE® Cutting Unit

Model No. 30099—Serial No. 290000001 and Up

Ordering Replacement Parts

To order replacement parts, please supply the part number, the quantity, and the description of each part desired.

Understanding Reference Numbers

Each identified part in an illustration has a reference number. The reference number for a part also appears in the parts list, along with other information about the part.

This catalog uses two special reference number formats, one to indicate parts in a service assembly and another to indicate the quantity of a given part in an illustration.

Service Assembly Reference Numbers

Parts in service assemblies have reference numbers in the form a:b. The a represents the reference number of the entire service assembly and the b represents a sequential number unique to each part within the service assembly.

For example, a wheel assembly might be identified by reference number 6, the tire by 6:1, the valve by 6:2, and the wheel by 6:3. When you order the assembly identified by reference number 6, you receive all parts identified by reference numbers 6:1, 6:2, and 6:3. However, you may also order any part individually. Reference numbers of this type appear in illustration and in parts lists.

Reference Numbers Indicating Quantity

In an illustration, if a reference number indicates more than one part, the reference number has the form nX y. The n represents the quantity of the part, the X is the multiplication symbol, and the y represents the reference number.

For example, in an illustration, the reference number 2X 37 means that two of the parts identified by reference number 37 are indicated.

List of Abbreviations

AR: as required

ASM: assembly

BBC: blade brake clutch

CARR: carriage

CCW: counter clock wise

CW: clockwise

DEG: degrees

ECM: electronic control module

EXT: external

FH: flat head

GA: gauge

HD: heavy-duty

HF: hex flange

HH: hex head

HHF: hex head flange

HHFTF: hex head flange thread forming

HJ: hex jam

HLH: hex lag head

HOC: height-of-cut

HSBH: hex socket button head

HSFH: hex socket flat head

HSH: hex socket head

HWH: hex washer head

HWHTF: hex washer head thread forming

HYD: hydraulic

LH: left hand

NI: nylon insert

NPTF: national pipe thread fine

PFH: phillips flat head

PPH: phillips pan head

PPHTF: phillips pan head thread forming

PRH: phillips round head

PTH: phillips truss head

PTO: power-take-off

RH: right hand

ROPS: roll-over protection system

SFH: slotted fillister head

SHH: slotted hex head

SHWH: slotted hex washer head

SPH: slotted pan head

SQH: square head

SRH: slotted round head

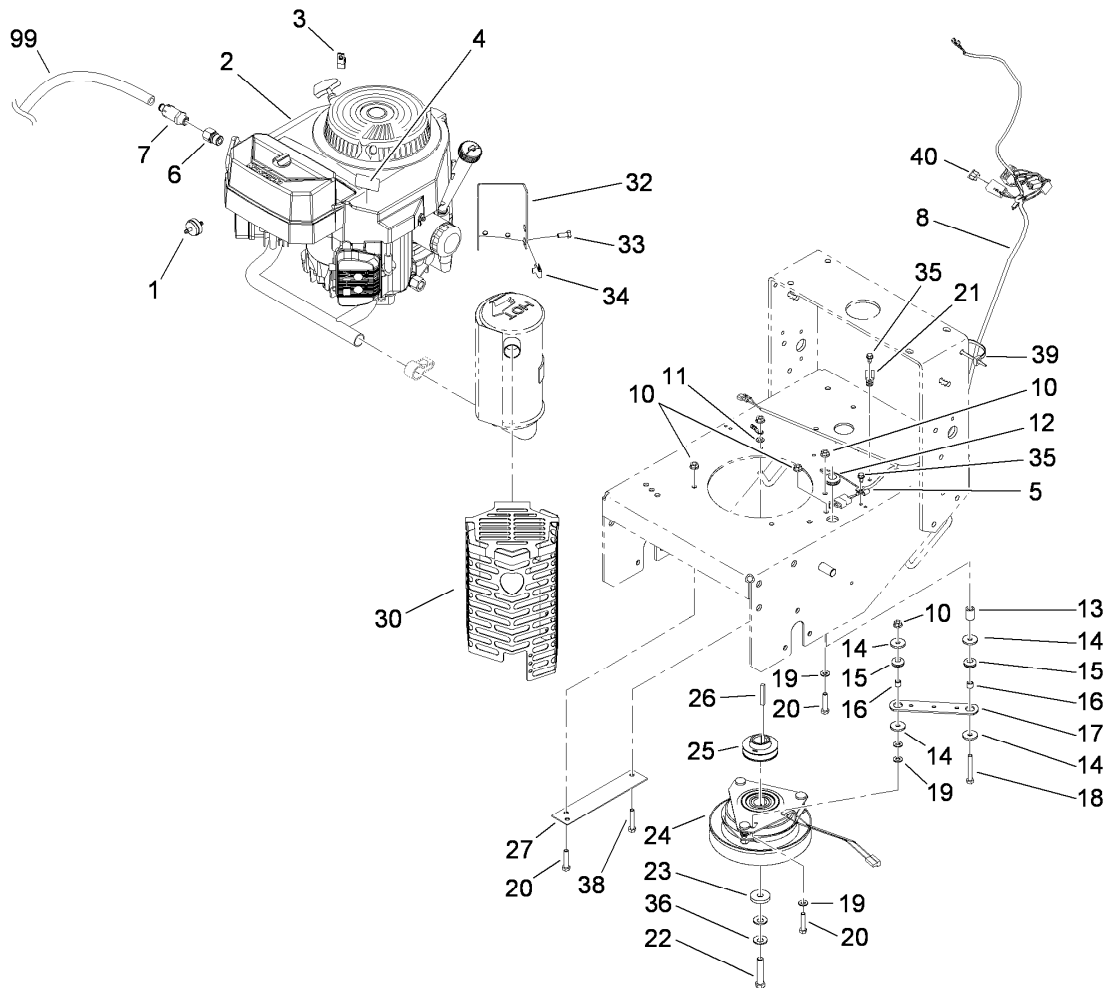
STD: standard

TAP: self tapping

TTH: torx truss head

Contents

Engine and Clutch Assembly	4
Power-Take-Off Idler and Weight Assembly	5
Fuel System Assembly	6
Lower Control Assembly	7
Transmission Drive Assembly	8
Wheel Drive and Brake Assembly	9
Upper Handle Assembly	10
Control Panel Assembly	11
Carrier Frame Assembly	12
Deck Drive and Baffle Assembly	13
Deck Assembly No. 112-7083	14
Spindle Assembly No. 110-0728	15
Spindle Assembly No. 110-0730	16
Lever Assembly No. 107-1664	17
Deck Assembly	18
Deflector Assembly No. 110-0758	19
Cylinder and Crankcase Assembly Kawasaki FH541V-GS30	20
Piston and Crankshaft Assembly Kawasaki FH541V-GS30	21
Valve and Camshaft Assembly Kawasaki FH541V-GS30	22
Lubrication Equipment Assembly Kawasaki FH541V-GS30	23
Cooling Equipment Assembly Kawasaki FH541V-GS30	24
Electric Equipment Assembly Kawasaki FH541V-GS30	25
Control Equipment Assembly Kawasaki FH541V-GS30	26
Carburetor Assembly Kawasaki FH541V-GS30	27
Air Filter and Muffler Assembly Kawasaki FH541V-GS30	28
Fuel Tank and Valve Assembly Kawasaki FH541V-GS30	29
Starter Assembly Kawasaki FH541V-GS30	30
Label Assembly Kawasaki FH541V-GS30	31
Attachments and Accessories	32

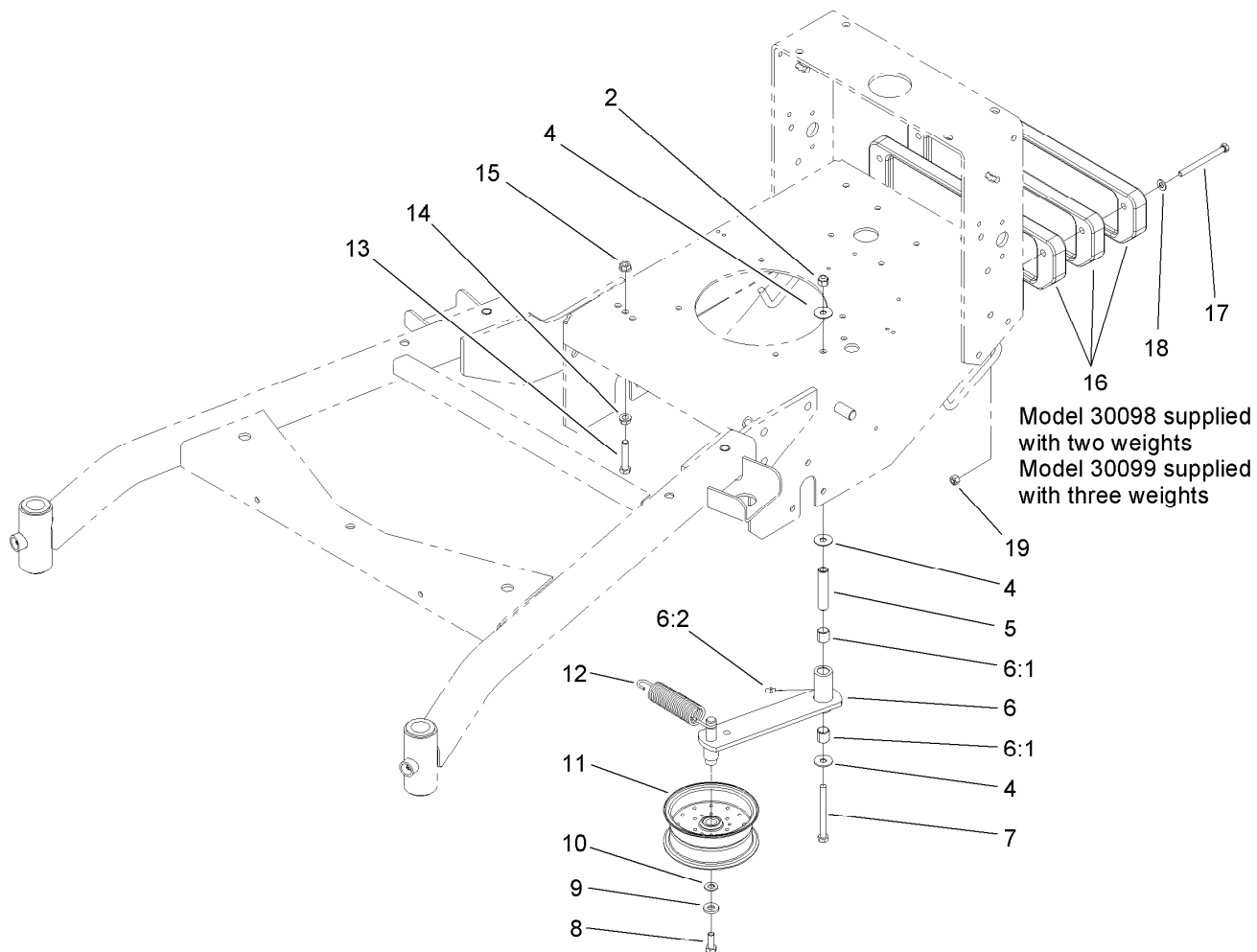


Engine and Clutch Assembly

Ref.	Part Number	Qty.	Description
1	56-6360	1	Filter-Fuel
2		1	Engine-Kawasaki, FH541V-Gs30 ●
3	2412-87	1	Clamp-Cable
4	106-0699	1	Decal-Warning
5	2412-72	1	Clip-Closed, Insulated
6	103-1966	1	Adapter
7	92-6877	1	Valve-Drain, Oil
8	104-8137	1	Harness-Wire
10	32128-20	6	Nut-HF
11	3255-8	1	Washer-Lock
12	112-7069	1	Grommet
13	104-6373	1	Tube-Retainer
14	1-613235	4	Washer
15	1-633630	2	Grommet-Brake
16	1-633545	2	Spacer
17	1-633543-03	1	Strap-Clutch, Brake
18	322-11	1	Screw-HH
19	3256-23	5	Washer-Flat

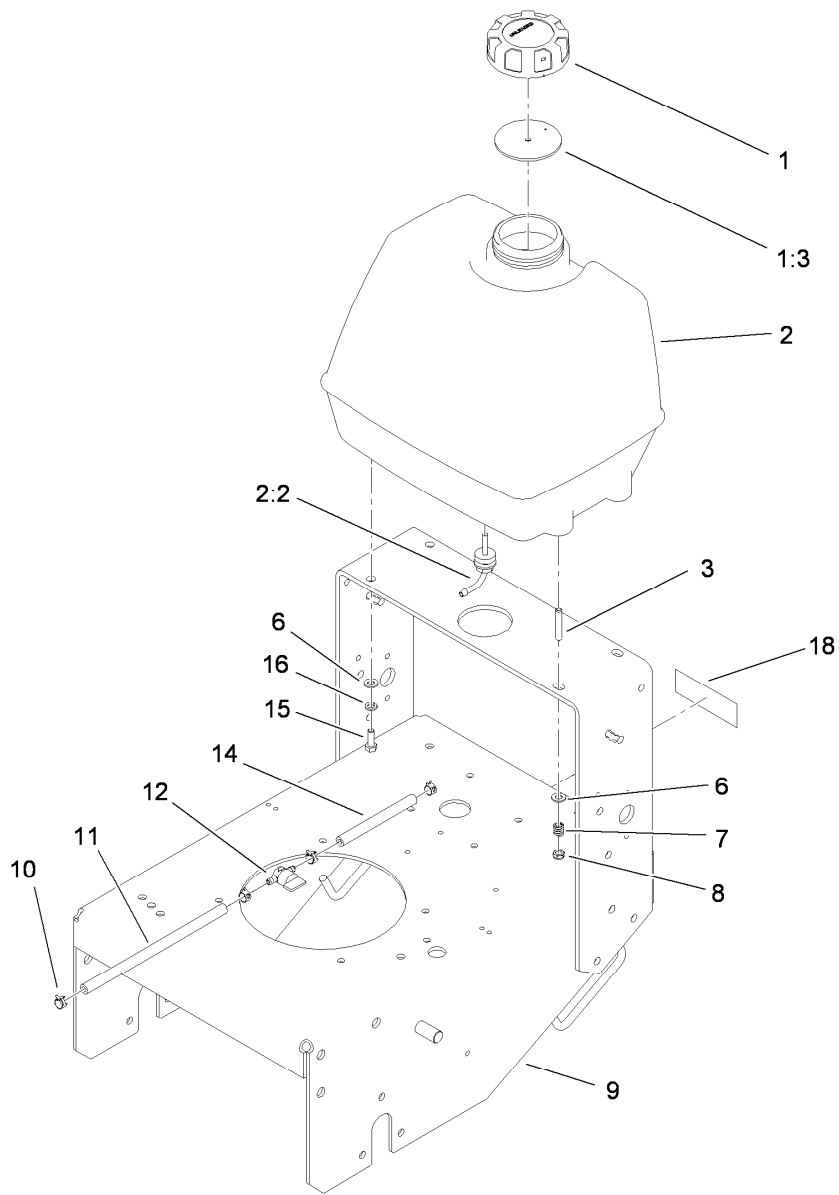
Ref.	Part Number	Qty.	Description
20	322-7	4	Screw-HH
21	2412-134	1	Clamp-R
22	3212-9	1	Screw-HH
23	107-4136	1	Washer
24	105-2635	1	Clutch / Brake ASM
25	107-4112	1	Pulley-Drive
26	608006	1	Key-Square
27	94-5847-01	1	Cover-Pulley
30	115-4150-03	1	Muffler Shield ASM
32	115-4154-03	1	Bracket-Muffler
33	322-3	4	Screw-HH
34	94-2413	4	U-Nut
35	12-3270	2	Screw
36	1-603610	2	Washer-Spring
38	322-9	1	Screw-HH
39	3290-378	1	Tie-Cable
40	114241	1	Fuse-7.5 Amp
99	103-1964	1	Hose-Drain, Oil

● Not serviced separately



Power-Take-Off Idler and Weight Assembly

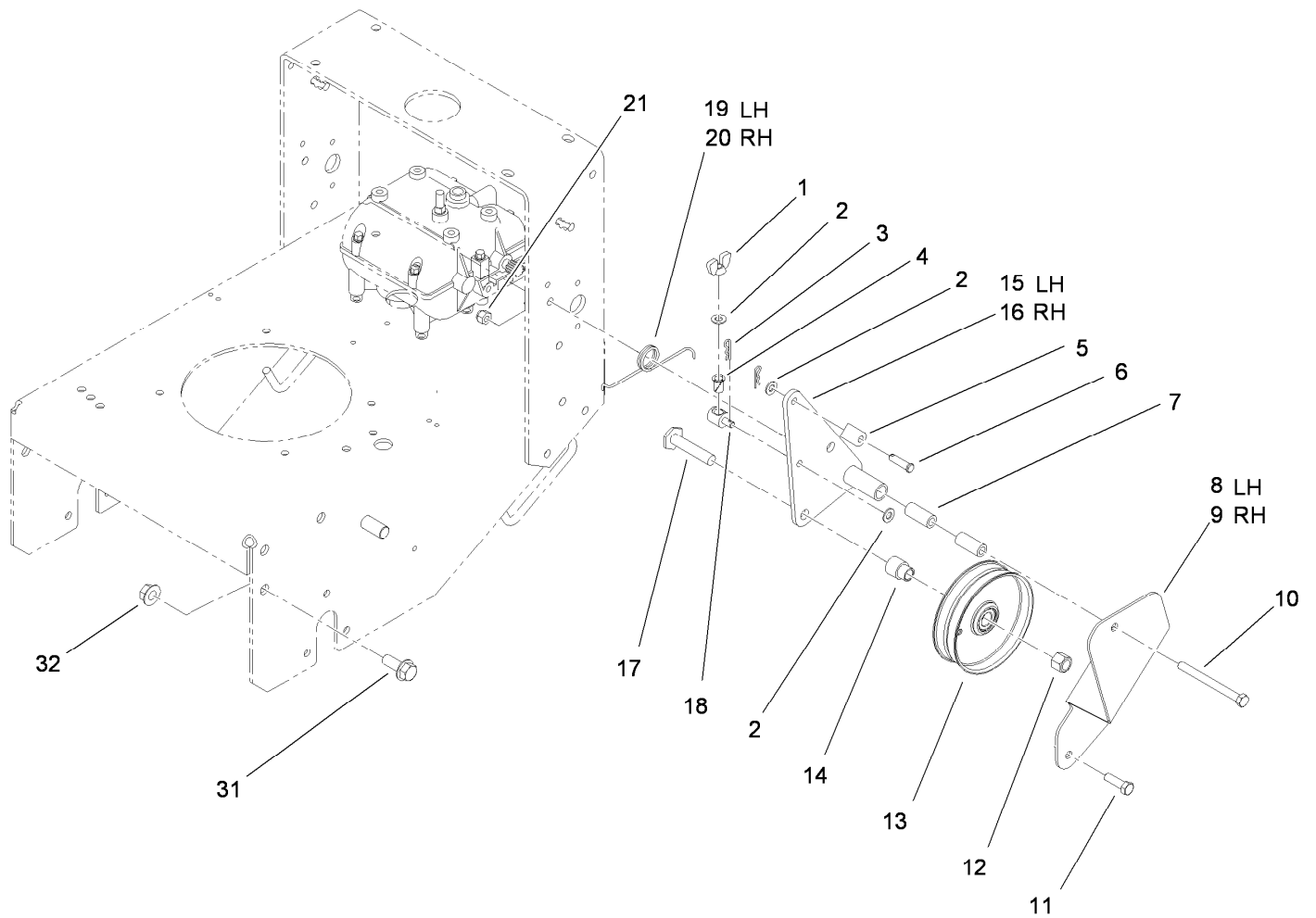
Ref.	Part Number	Qty.	Description
2	3296-39	1	Nut-Lock, NI
4	52-2860	3	Washer
5	104-6377	1	Tube-Idler
6	108-2734	1	Idler Arm ASM
6:1	1-513034	2	Sleeve-Bearing
6:2	302-5	1	Fitting-Grease
7	323-42	1	Screw-HH
8	323-6	1	Screw-HH
9	98-5975	1	Washer-Belleville
10	3256-24	1	Washer-Flat
11	1-413099	1	Pulley-Idler
12	105-8443	1	Spring-Extension
13	323-10	1	Screw-HH
14	3290-357	1	Nut-HHF, Whiz
15	32128-21	1	Nut-HF
16	112-7059-01	3	Weight-Cast
17	322-19	2	Screw-HH
18	3256-23	2	Washer-Flat
19	3296-29	2	Nut-Lock, NI



Fuel System Assembly

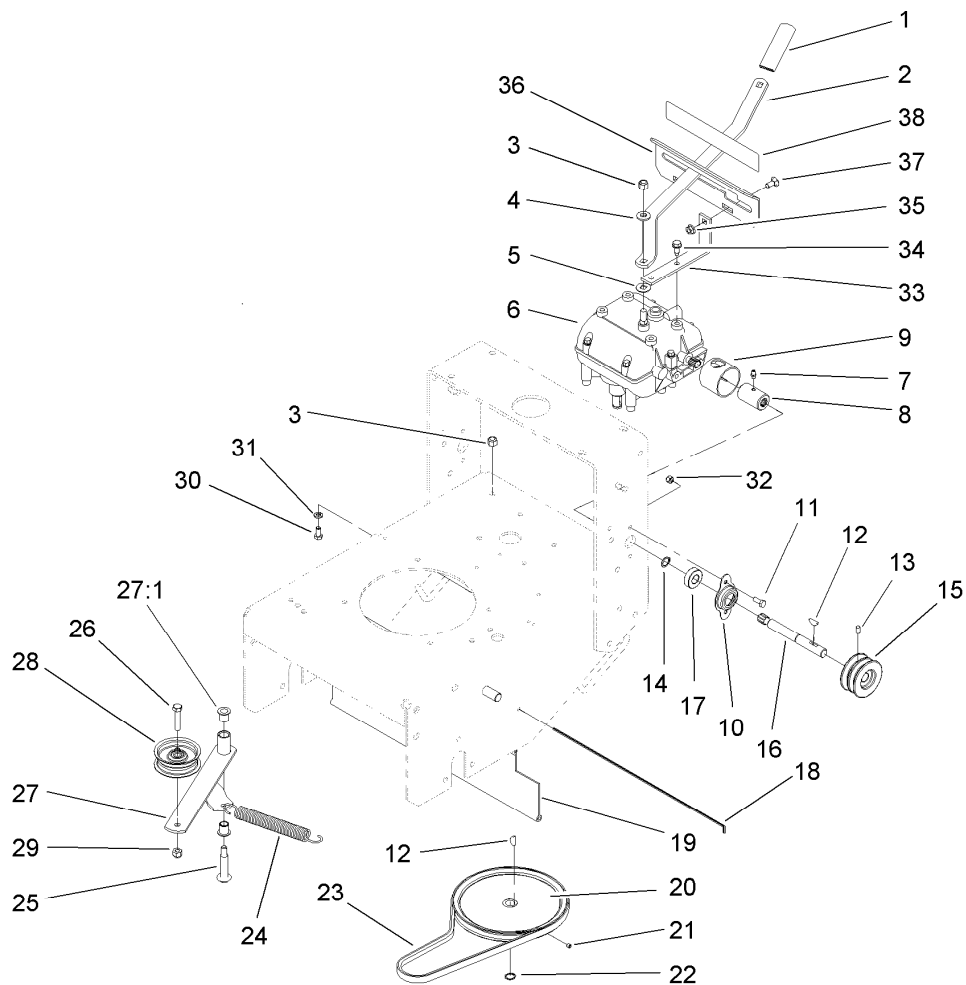
Ref.	Part Number	Qty.	Description
1	88-3980	1	Gas Cap ASM
1:3	88-4010	1	Gasket-Cap, Gas
2	106-0730	1	Fuel Tank ASM
2:2	103-2605	1	Fitting-Fuel, Bulkhead
3	104-8121	2	Stud-Threaded
6	3256-23	4	Washer-Flat
7	1-633349	2	Spring-Tank, Fuel
8	3296-47	2	Nut-Lock, NI

Ref.	Part Number	Qty.	Description
9	108-2675-01	1	Gear Frame ASM
10	2412-98	4	Clamp
11	110-4894	1	Hose-Fuel
12	1-603770	1	Valve-Fuel
14	107-0588	1	Hose-Fuel
15	322-4	2	Screw-HH
16	3253-4	2	Washer-Lock
18	98-0776	1	Decal-Caution



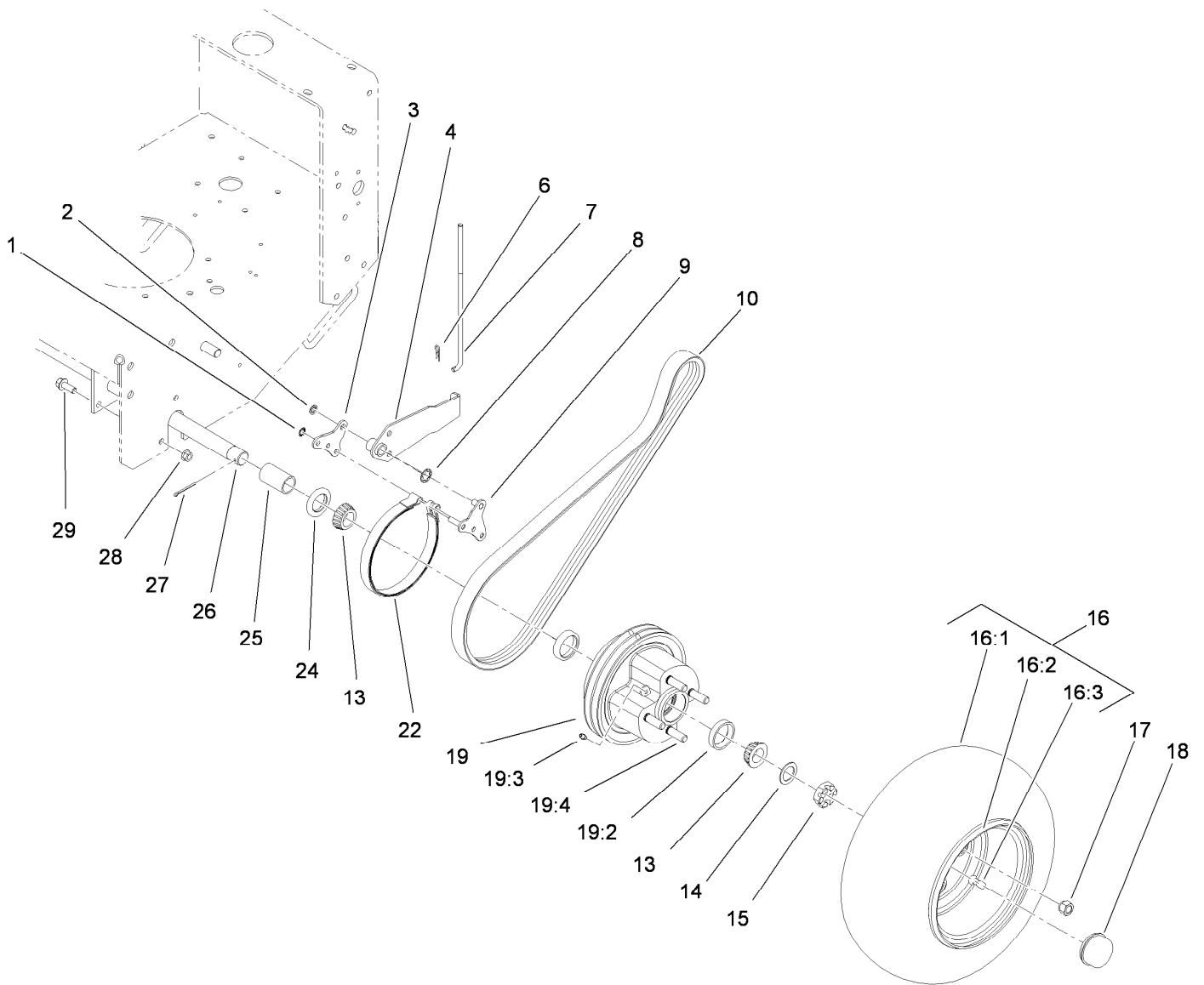
Lower Control Assembly

<i>Ref.</i>	<i>Part Number</i>	<i>Qty.</i>	<i>Description</i>	<i>Ref.</i>	<i>Part Number</i>	<i>Qty.</i>	<i>Description</i>
1	32103-25	2	Nut-Wing	13	95-2800	2	Pulley-Idler
2	3256-23	6	Washer-Flat	14	95-2801	2	Spacer-Pulley
3	3290-307	4	Pin-Hair	15	108-2740-01	1	LH Idler Arm ASM
4	52-2890	2	Bushing-Nylon	16	108-2741-01	1	RH Idler Arm ASM
5	74-0521	2	Fitting-Rod	17	51-4450	2	Screw-Leveler
6	283-6	2	Pin-Clevis	18	68-9690	2	Fitting-Rod
7	74-0040	4	Spacer-Pivot, Idler	19	51-4380	1	Spring-Torsion, LH
8	108-2725-01	1	Support-Idler, LH	20	51-4370	1	Spring-Torsion, RH
9	108-2724-01	1	Support-Idler, RH	21	3296-39	6	Nut-Lock, NI
10	323-16	2	Screw-HH	31	3234-32	6	Screw-HHF
11	323-7	4	Screw-HH	32	32128-23	6	Nut-HF
12	3296-23	2	Nut-Lock, NI				



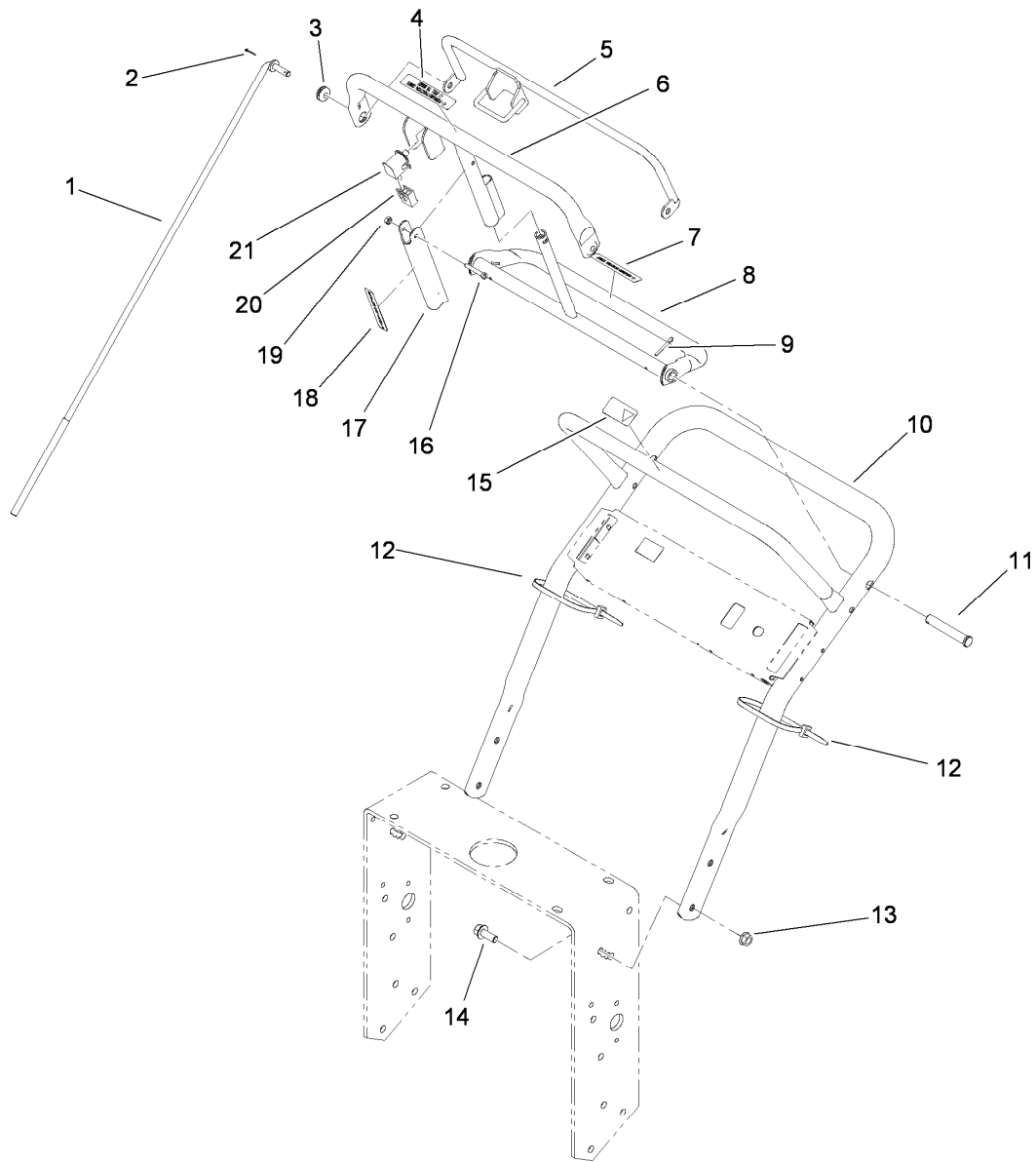
Transmission Drive Assembly

<i>Ref.</i>	<i>Part Number</i>	<i>Qty.</i>	<i>Description</i>	<i>Ref.</i>	<i>Part Number</i>	<i>Qty.</i>	<i>Description</i>
1	47-1970	1	Grip	21	3245-1	1	Screw-Set, HSH
2	98-3274-03	1	Lever-Shift	22	32120-64	1	Ring-Snap, External
3	3296-6	2	Nut-Lock	23	105-5668	1	V-Belt
4	98-5975	1	Washer-Belleville	24	80-6610	1	Spring-Extension
5	1-323379	1	Washer	25	27-6230	1	Bolt-Wheel
6	1-323500	1	Transmission	26	323-9	1	Screw-HH
7	302-5	2	Fitting-Grease	27	16-7509	1	Lever-Idler
8	1-323680	2	Coupler	27:1	256-155	2	Bushing-Flange
9	51-4220	2	Guard-Coupler	28	62-4540	1	Pulley
10	1-323254	2	Flange-Output	29	3296-39	1	Nut-Lock, NI
11	321-4	4	Screw-HH	30	322-2	4	Screw-HH
12	3257-5	3	Key-Woodruff	31	3253-4	4	Washer-Lock
13	3245-9	2	Screw-Set	32	3296-42	4	Nut-Lock, NI
14	32151-62	2	Ring-Retaining	33	1-323389-03	2	Bracket-Plate, Shift
15	105-2698	2	Pulley-Transmission	34	9264964	4	Screw-HWH, Thread Cut
16	104-1102	2	Shaft-Output	35	32128-20	2	Nut-HF
17	1-323252	2	Bearing-Shaft	36	1-323387-03	1	Plate-Shift
18	95-1529	1	Rod-Shield	37	3230-1	2	Bolt-CARR
19	95-1526	1	Shield-Trailing	38	98-3256	1	Decal-Speed, Ground
20	105-5646	1	Pulley-Driven				



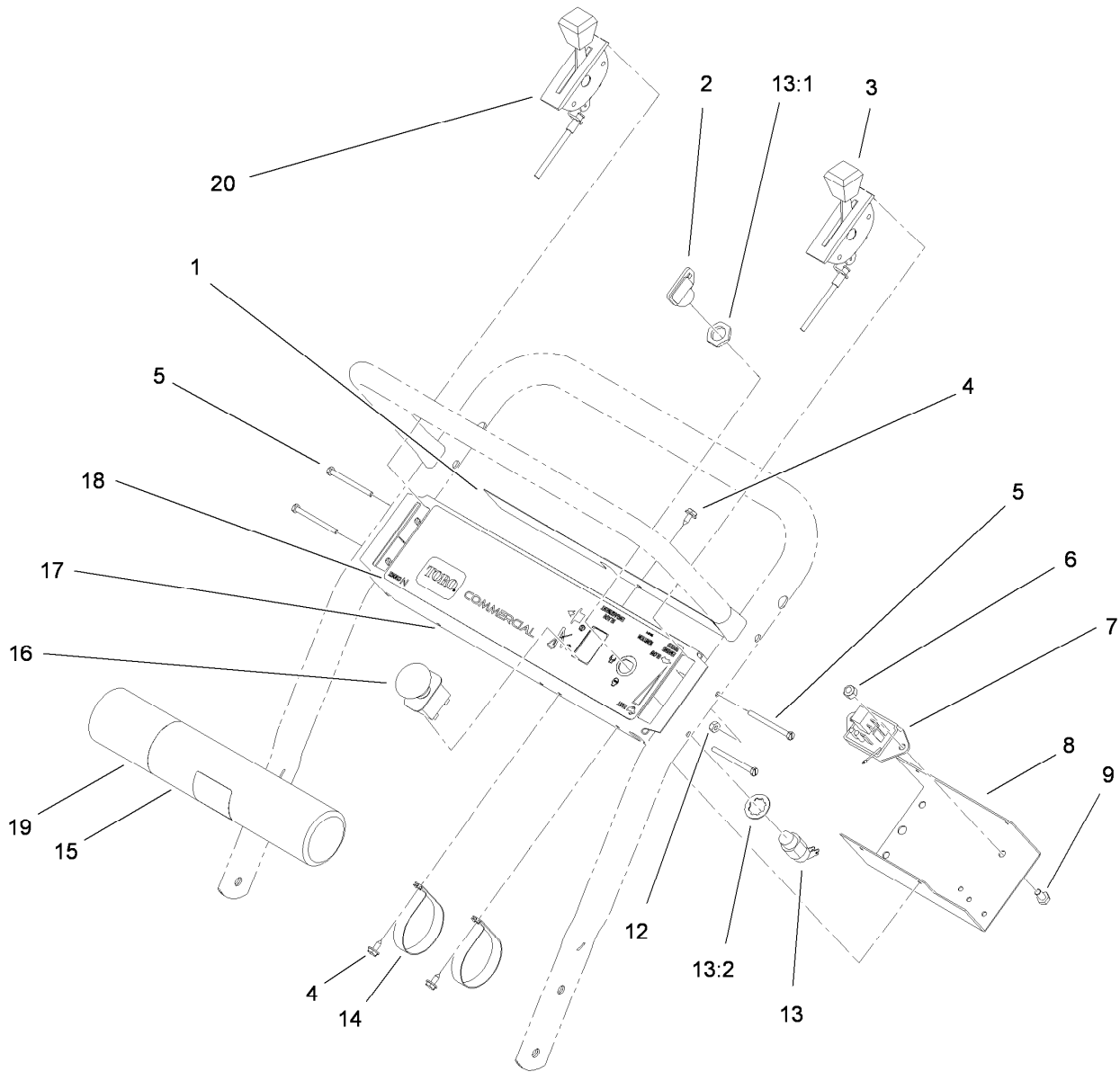
Wheel Drive and Brake Assembly

Ref.	Part Number	Qty.	Description	Ref.	Part Number	Qty.	Description
1	32151-72	4	Ring-Retaining	16:3	232-27	1	Stem-Valve
2	32151-56	2	Ring-Retaining, External	17	242-50	8	Nut-Lug
3	106-8792	2	Plate-Link, Brake	18	241-119	2	Cap-Dust
4	110-5010-01	2	Brake Arm ASM	19	107-4090	2	Wheel Hub ASM
6	3290-307	2	Pin-Hair	19:2	1-543508	2	Cup-Bearing
7	108-2730	2	Rod-Brake	19:3	302-5	1	Fitting-Grease
8	32151-40	2	Ring-Retaining	19:4	10-6830	4	Stud-Type, Drive
9	106-8773	2	Brake Link ASM	22	1-323262	2	Band-Brake
10	108-2723	2	Belt-V, Banded	24	1-543511	2	Seal-Grease
13	1-543509	4	Bearing-Roller, Tapered	25	110-5006	2	Spacer-Wheel
14	1-523157	2	Washer-Spacer	26	110-4983-01	1	Axle ASM
15	1-809082	2	Nut-SHH	27	1-806800	2	Pin-Cotter
16	106-0892	2	Wheel And Tire ASM	28	32128-21	6	Nut-HF
16:1	104-6322	1	Tire	29	3234-11	6	Screw-HHF
16:2	106-0893	1	Wheel				



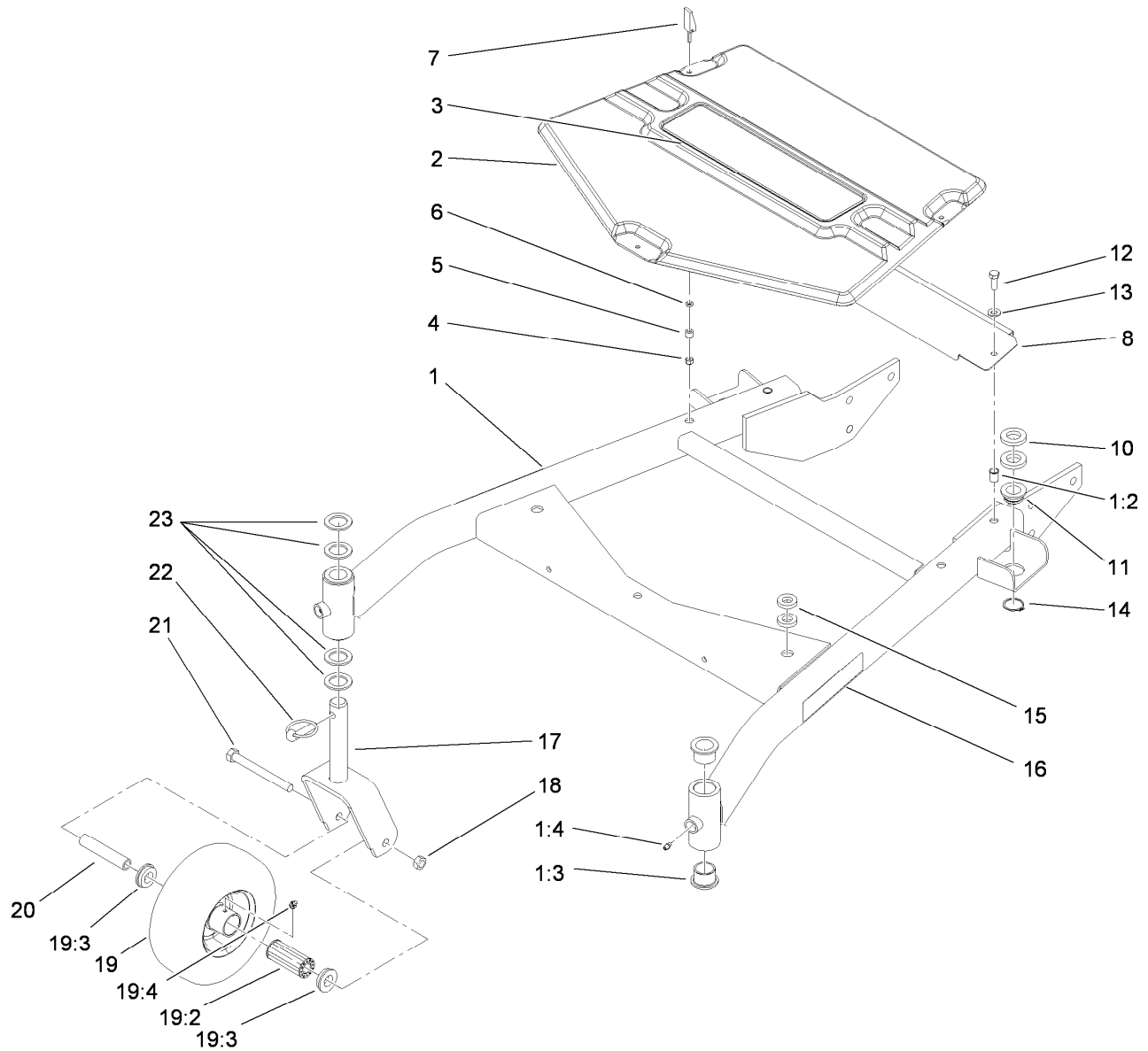
Upper Handle Assembly

<i>Ref.</i>	<i>Part Number</i>	<i>Qty.</i>	<i>Description</i>	<i>Ref.</i>	<i>Part Number</i>	<i>Qty.</i>	<i>Description</i>
1	105-4677	2	Rod-Control	12	3290-378	2	Tie-Cable
2	3272-4	2	Pin-Cotter	13	32128-21	4	Nut-HF
3	237-141	2	Grommet-Rubber	14	3234-11	4	Screw-HHF
4	82-2290	1	Decal	15	98-4387	1	Decal-Protection, Ear
5	82-7680-03	1	Bail ASM	16	32105-1	1	Screw-SHH
6	82-7690-03	1	Bar-Control	17	51-4850-03	1	Lever-Brake, Parking
7	82-2280	1	Decal	18	52-2010	1	Decal-Lever, Parking
8	106-5477-03	1	Control Pivot ASM	19	3296-2	1	Nut-Lock, NI
9	3272-11	2	Pin-Cotter	20	218-595	1	Connector-Body
10	105-3158-03	1	Upper Handle ASM	21	82-2190	1	Switch-Bail
11	283-55	2	Pin-Clevis				



Control Panel Assembly

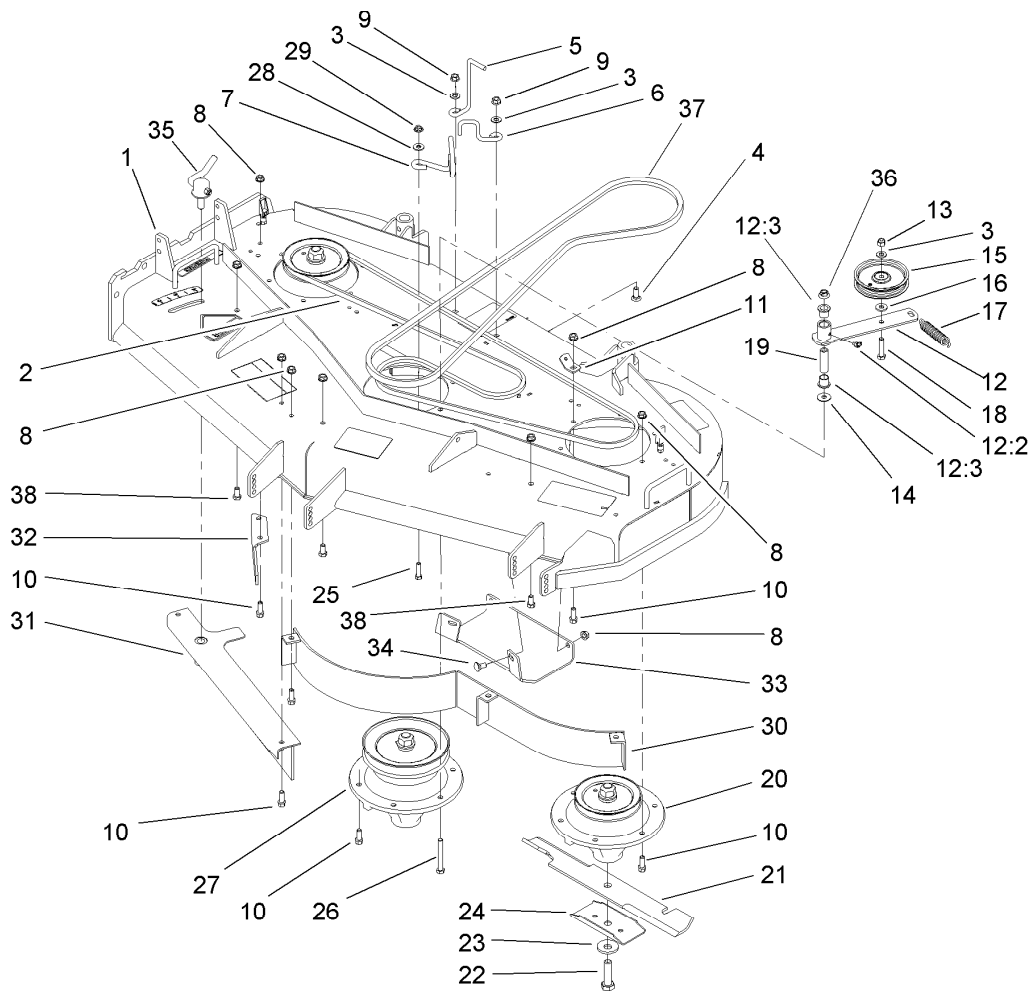
<i>Ref.</i>	<i>Part Number</i>	<i>Qty.</i>	<i>Description</i>	<i>Ref.</i>	<i>Part Number</i>	<i>Qty.</i>	<i>Description</i>
1	105-0884	1	Decal-Danger	13	29-5560	1	Switch-On / Off
2	63-8360	1	Key-Ignition	13:1	218-461	1	Nut-HH
3	110-4994	1	Cable-Throttle	13:2	3254-5	1	Washer-Tooth
4	32104-76	4	Screw	14	2412-120	2	R-Clamp
5	32105-14	4	Screw-SHH	15	104-7050	1	Tube-Manual
6	3296-42	1	Nut-Lock, NI	16	104-8140	1	Switch-PTO
7	104-8141	1	Module-Delay	17	110-4982-03	1	Panel-Control
8	93-1187-03	1	Panel-Bottom	18	110-4971	1	Decal-Control Panel
9	321-2	1	Screw-HH	19	104-7048	1	Cap-Housing
12	3296-2	4	Nut-Lock, NI	20	110-4995	1	Cable-Choke



Carrier Frame Assembly

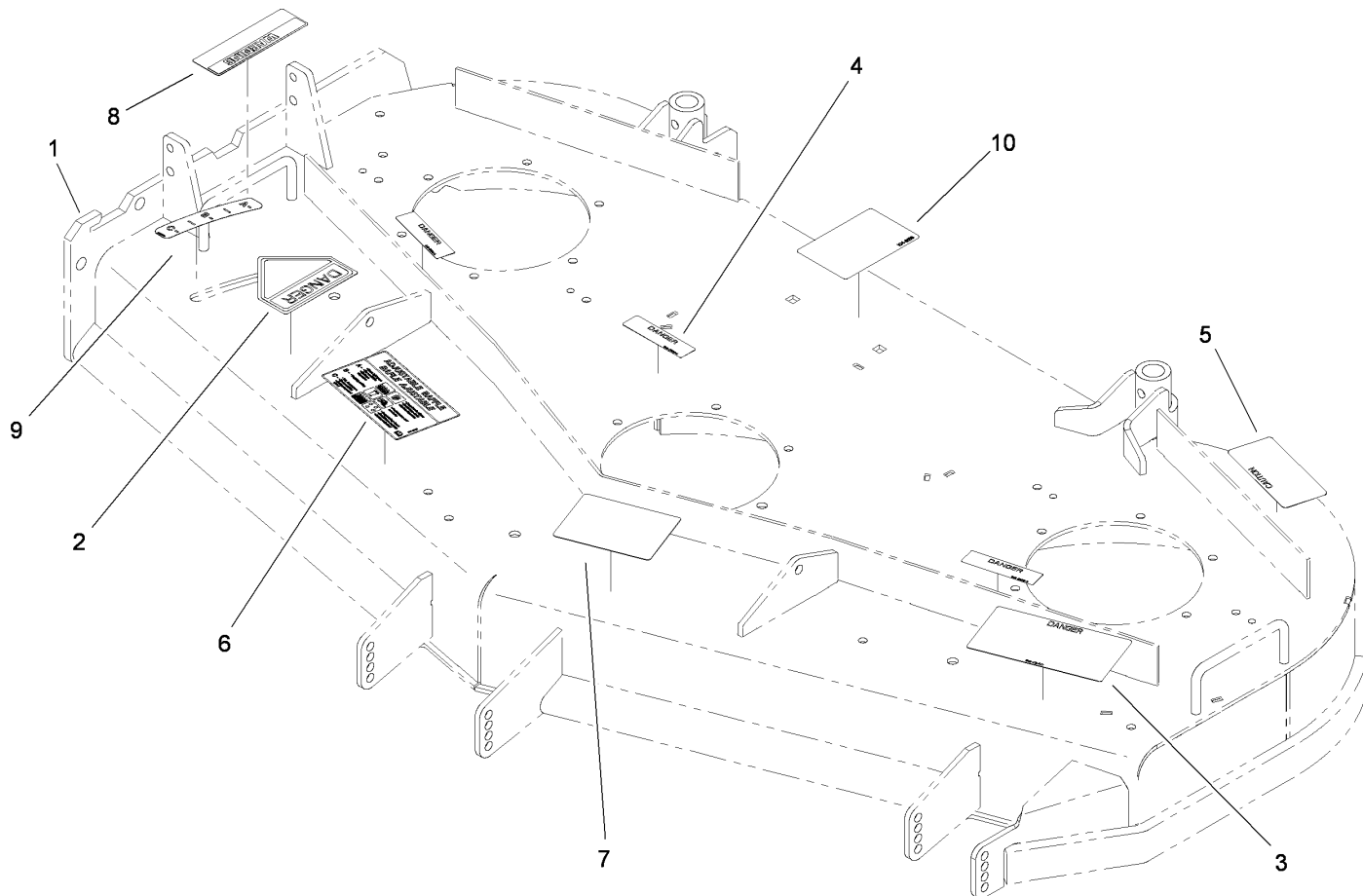
Ref.	Part Number	Qty.	Description
1	108-2665	1	Carrier Frame ASM
1:2	32148-9	2	Insert-Nut
1:3	94-1291	4	Bushing
1:4	302-5	2	Fitting-Grease
2	108-6625	1	Cover-Frame, Carrier
3	112-9713	1	Decal
4	1-804254	3	Nut
5	106-6778	3	Bushing-Latch, Swell
6	99-3058	3	Washer
7	106-6777	3	Handle-Latch, Swell
8	112-7051-01	1	Shield-Belt
10	104-1105	4	Spacer-Support, Deck
11	1-513336	2	Bushing-Deck
12	323-6	2	Screw-HH

Ref.	Part Number	Qty.	Description
13	3256-24	2	Washer-Flat
14	32120-33	2	Ring-Retaining
15	1-323539	4	Spacer
16	106-0635	2	Decal-HOC
17	105-3159-01	2	Castor Fork ASM
18	32153-5	2	Nut-Lock, Side
19	110-5024	2	Wheel And Tire ASM
19:2	112-7066	1	Bearing-Roller
19:3	1-513810	2	Bushing
19:4	302-61	1	Zerk
20	100-6453	2	Bushing-Spanner
21	325-19	2	Screw-HH
22	283-71	2	Pin-Lynch
23	3-6781	8	Washer-Thrust



Deck Drive and Baffle Assembly

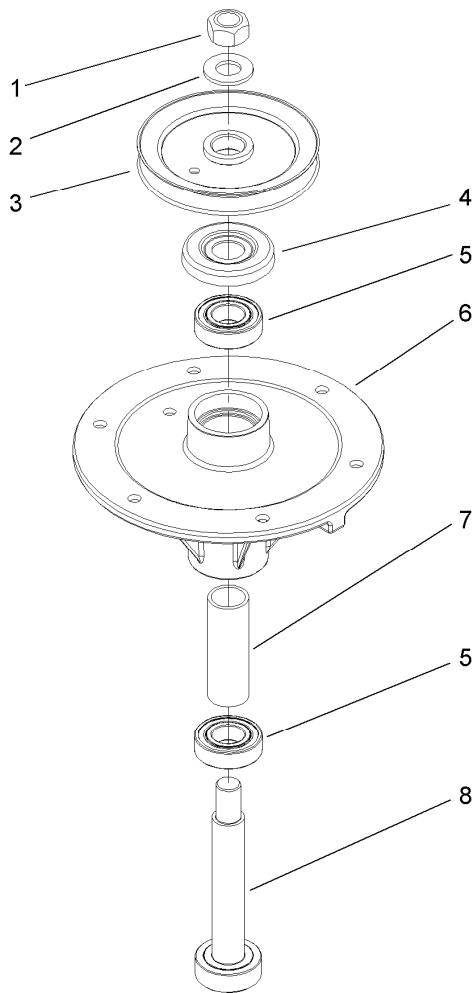
<i>Ref.</i>	<i>Part Number</i>	<i>Qty.</i>	<i>Description</i>	<i>Ref.</i>	<i>Part Number</i>	<i>Qty.</i>	<i>Description</i>
1	112-7083	1	Deck ASM	19	112-7091	1	Spacer
2	108-2694	1	Belt-V	20	110-0728	2	Spindle ASM
3	3256-24	3	Washer-Flat	21	105-7781-03	3	Blade-18 Inch (Hi Flow)
4	3231-22	2	Screw-CARR	22	51-4060	3	Screw-Blade
5	98-5980	1	Guide-Belt	23	103-0865	3	Washer-Blade Bolt, Heavy
6	110-6975	1	Guide-Belt	24	108-2727	3	Stiffener-Blade
7	105-0850	1	Guide-Belt	25	322-6	1	Screw-HH
8	3290-357	29	Nut-HHF, Whiz	26	323-14	1	Screw-HH
9	32128-21	2	Nut-HF	27	110-0730	1	Spindle ASM
10	92-1624	22	Screw-HWH	28	3256-3	1	Washer-Flat
11	104-6374	1	Plate-Spring	29	32128-13	1	Nut-HF
12	108-2728	1	Idler Arm ASM	30	110-0740-03	1	Baffle ASM
12:2	302-11	1	Fitting-Lube, 45 DEG	31	110-0745-03	1	Adjustable Baffle ASM
12:3	256-90	2	Bushing-Flange	32	110-0754-01	1	Baffle-Discharge
13	3296-39	1	Nut-Lock, NI	33	106-7358-01	1	Plate-Skid
14	52-2860	1	Washer	34	3231-1	4	Screw-CARR
15	93-1622	1	Pulley-Idler	35	107-1664	1	Lever ASM
16	9202414	1	Washer-Spacer	36	32128-19	1	Nut-HF
17	51-3650	1	Spring-Extension	37	108-2693	1	Belt-V
18	323-9	1	Screw-HH	38	323-4	3	Screw-HH



Deck Assembly No. 112-7083

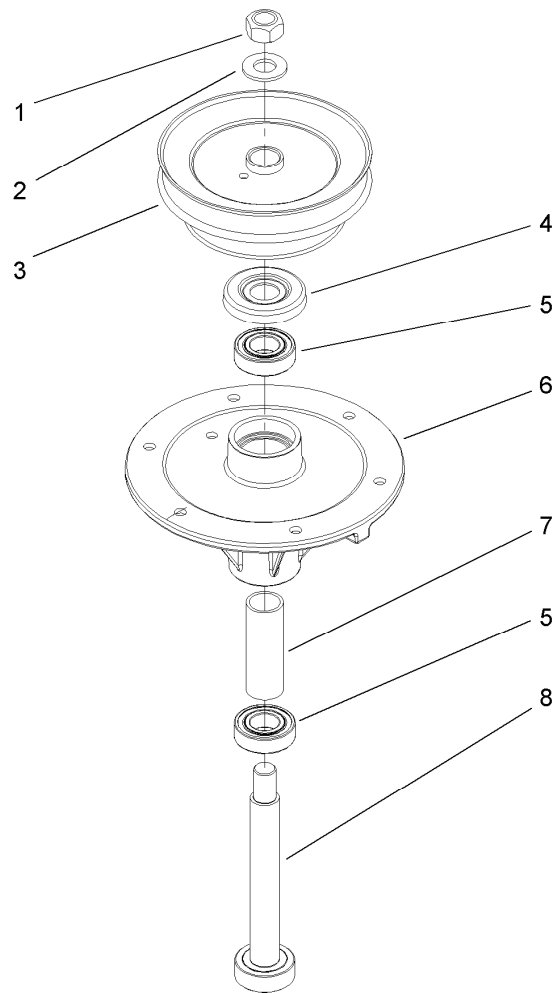
<i>Ref.</i>	<i>Part Number</i>	<i>Qty.</i>	<i>Description</i>
1		1	52 Inch Deck ASM ●
2	43-8480	1	Decal-Danger
3	66-1340	1	Decal-Danger, Thrown Object
4	98-5954	3	Decal-Cover, Missing
5	68-8340	1	Decal-Torque
6	110-2068	1	Decal-Adjustment, Baffle
7	105-7798	1	Decal-Scalp, Anti
8	104-8569	1	Decal-Warning
9	110-2067	1	Decal-Setting, Baffle
10	104-8186	1	Decal-Routing, Belt

● Not serviced separately



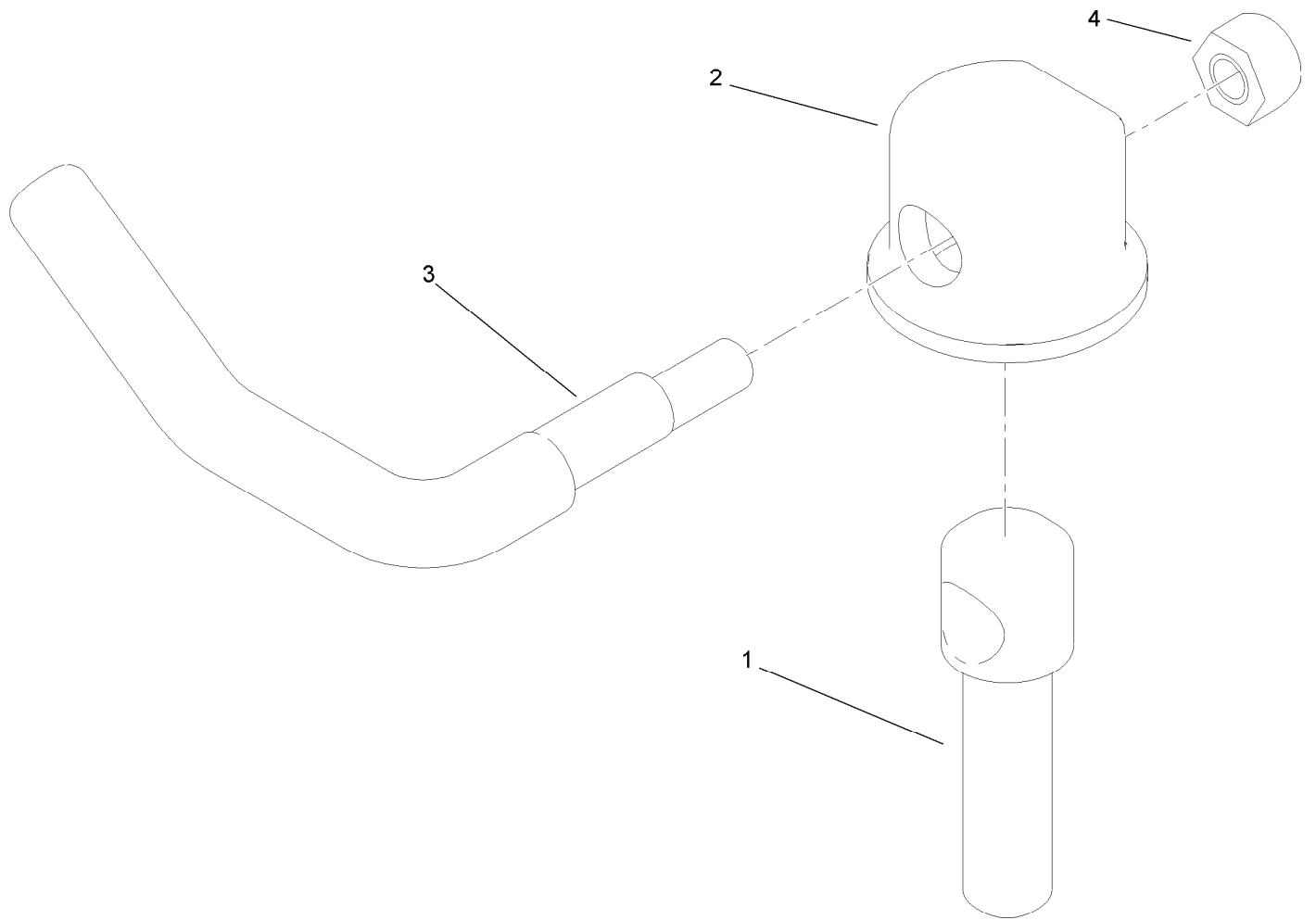
Spindle Assembly No. 110-0728

<i>Ref.</i>	<i>Part Number</i>	<i>Qty.</i>	<i>Description</i>
1	3219-7	1	Nut-Hex
2	7-4150	1	Washer
3	104-1181	1	Pulley ASM
4	106-0873	1	Shield-Bearing
5	104-6325	2	Bearing-Ball
6	108-6696	1	Housing-Spindle
7	110-0727	1	Spacer-Bearing
8	110-0726	1	Shaft-Spindle



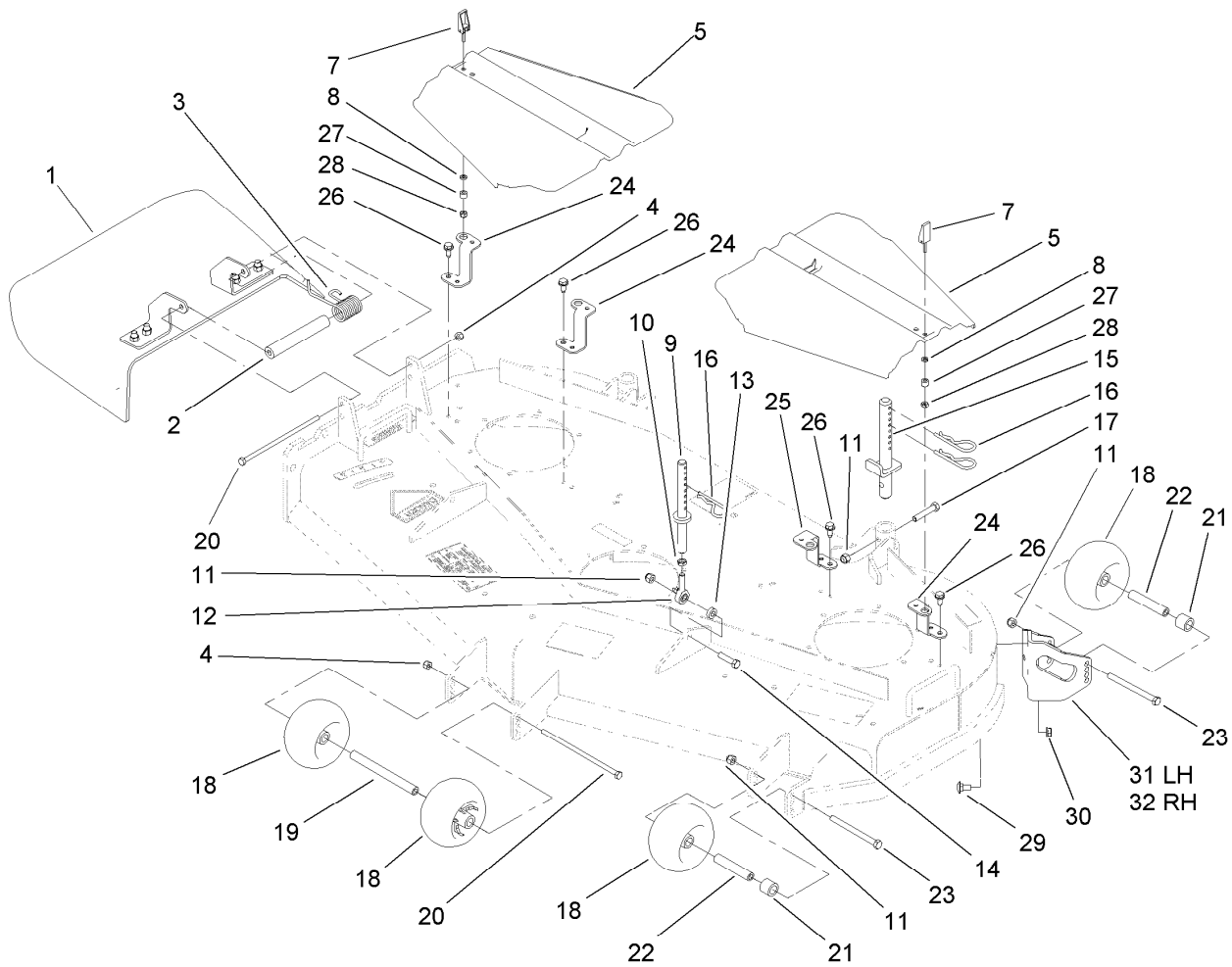
Spindle Assembly No. 110-0730

<i>Ref.</i>	<i>Part Number</i>	<i>Qty.</i>	<i>Description</i>
1	3219-7	1	Nut-Hex
2	7-4150	1	Washer
3	108-6627	1	Pulley And Hub ASM
4	106-0873	1	Shield-Bearing
5	104-6325	2	Bearing-Ball
6	108-6696	1	Housing-Spindle
7	110-0727	1	Spacer-Bearing
8	110-0725	1	Shaft-Spindle



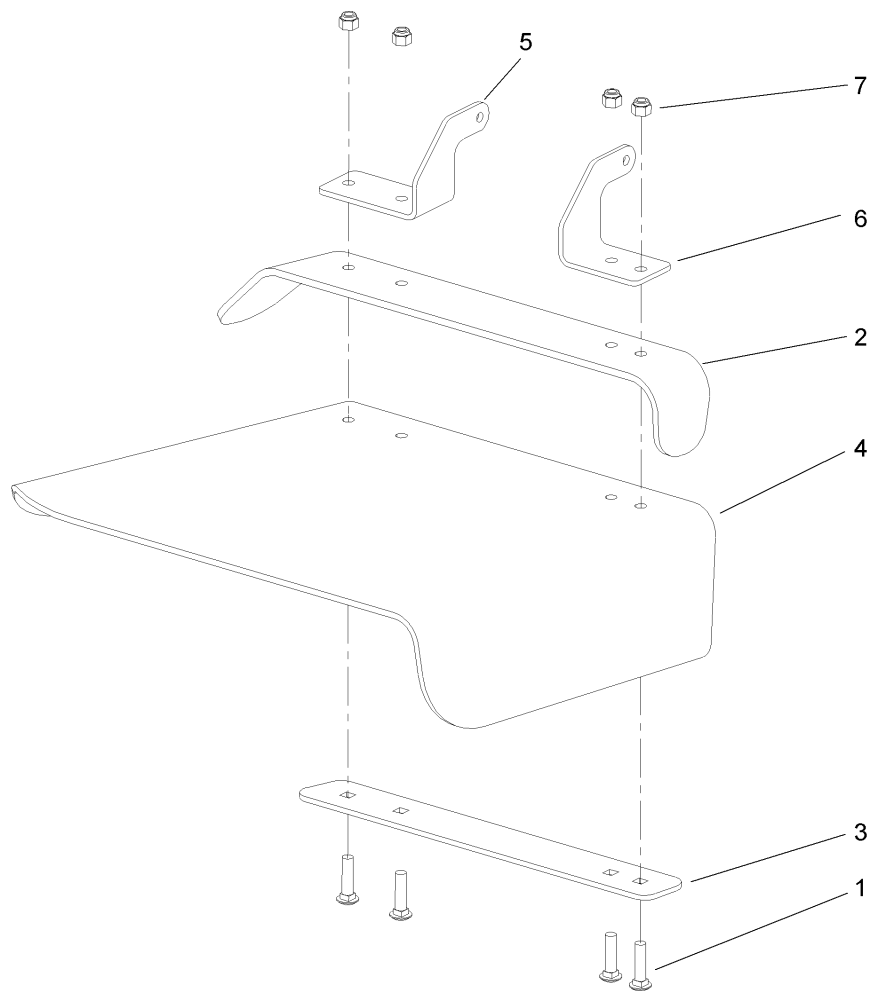
Lever Assembly No. 107-1664

<i>Ref.</i>	<i>Part Number</i>	<i>Qty.</i>	<i>Description</i>
1	106-3239	1	Screw-Lock
2	107-1644	1	Cap-Lock
3	106-3241	1	Lever-Lock
4	3296-29	1	Nut-Lock, NI



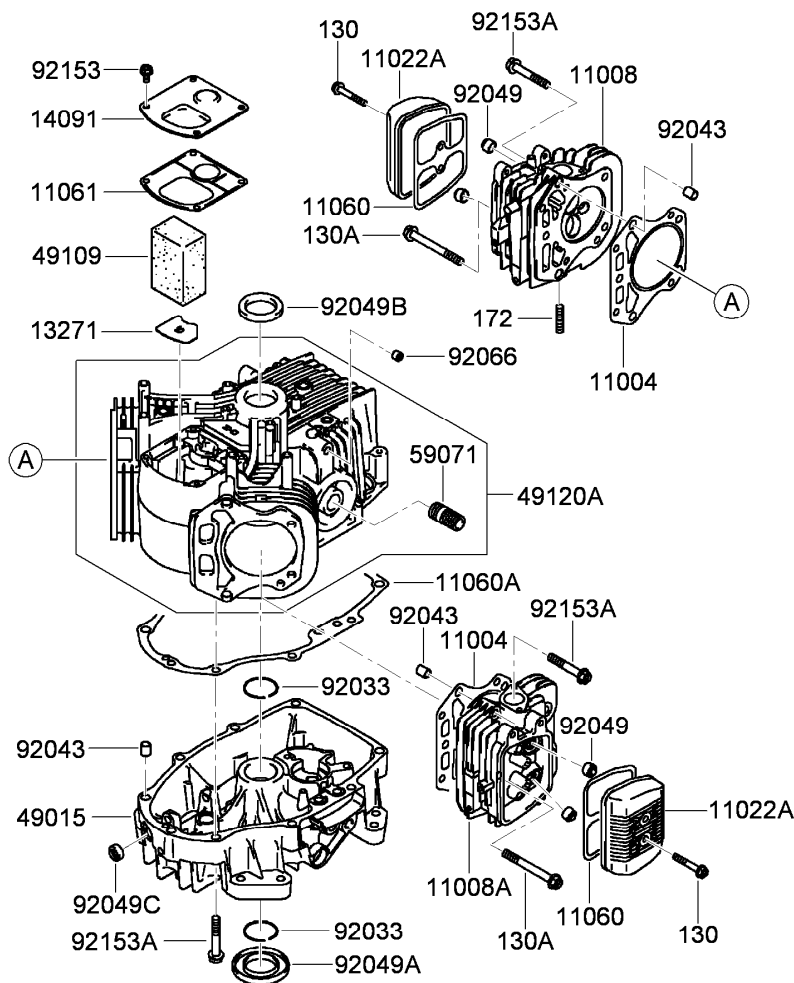
Deck Assembly

<i>Ref.</i>	<i>Part Number</i>	<i>Qty.</i>	<i>Description</i>	<i>Ref.</i>	<i>Part Number</i>	<i>Qty.</i>	<i>Description</i>
1	110-0758	1	Deflector ASM	18	1-603299	5	Roller-Scalp, Anti
2	105-4622	1	Spacer	19	98-5967	1	Spacer-Wheel
3	104-8554	1	Spring-Torsion	20	322-50	2	Screw-HH
4	3296-29	2	Nut-Lock, NI	21	98-7913	3	Tube-Spacer
5	107-8536	2	Cover-Belt	22	98-7912	3	Tube-Spanner
7	106-6777	2	Handle-Latch, Swell	23	323-23	3	Screw-HH
8	99-3058	2	Washer	24	108-2698-01	3	Bracket-Cover
9	108-2674	2	Front Pin ASM	25	108-2699-01	1	Bracket-Cover
10	3220-3	2	Nut-HJ	26	32144-70	4	Screw-HWHTF
11	3296-39	7	Nut-Lock, NI	27	106-6778	2	Bushing-Latch, Swell
12	1-613204	2	Balljoint	28	1-804254	2	Nut
13	104-1156	2	Spacer	29	3231-1	6	Screw-CARR
14	323-8	2	Screw-HH	30	32128-21	6	Nut-HF
15	110-2086	2	Rear Pin ASM	31	110-0736-01	1	Bracket-Roller, LH
16	3290-256	6	Pin-Hair	32	110-0737-01	1	Bracket-Roller, RH
17	323-10	2	Screw-HH				



Deflector Assembly No. 110-0758

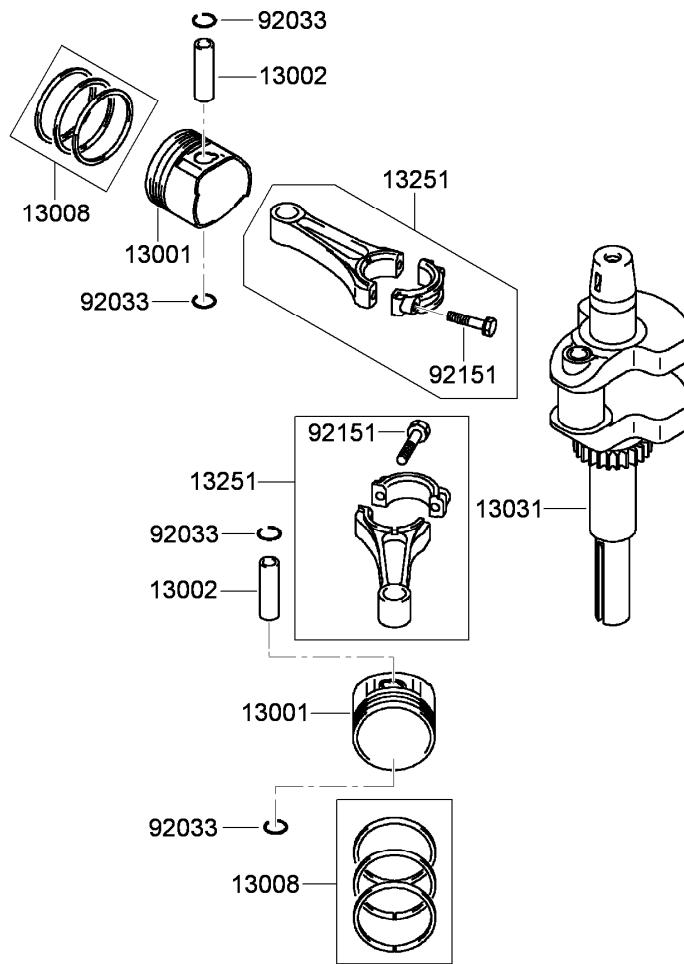
<i>Ref.</i>	<i>Part Number</i>	<i>Qty.</i>	<i>Description</i>
1	3231-4	4	Screw-CARR
2	106-3246-01	1	Deflector
3	106-3248-03	1	Strap-Discharge
4	110-0759	1	Deflector-Rubber
5	107-4197-01	1	Bracket-Hinge, Rear
6	107-4196-01	1	Bracket-Hinge, Front
7	3296-39	4	Nut-Lock, NI



Cylinder and Crankcase Assembly Kawasaki FH541V-GS30

Ref.	Part Number	Qty.	Description	Ref.	Part Number	Qty.	Description
130	130AA0640	4	Bolt-Flanged (6X40) ●	59071	59071-2079	1	Joint ●
130A	130CA0875	2	Bolt-Flanged (8X75) ●	92033	92033-7003	2	Ring-Snap ●
172	172BA0818	4	Bolt-Stud (8X18) ●	92043	92043-7001	6	Pin ●
11004	11004-7016	2	Gasket-Head ●	92049	92049-7001	4	Seal-Oil, R V C2 (6X11X10.2) ●
11008	11008-6043	1	Head-Cylinder, No. 1 ●	92049A	92049-7015	1	Seal-Oil, S D (35X62X8 L HSH) ●
11008A	11008-7020	1	Head-Cylinder, No. 2 ●	92049B	92049-7016	1	Seal-Oil, S D (35X48X8 R HSH) ●
11022A	11022-7018	2	Case-Rocker ●	92049C	92049-7019	1	Seal-Oil, S O (8X14X5 HSH) ●
11060	11060-7001	2	Gasket-Case, Rocker ●	92066	92066-7026	1	Plug ●
11060A	11060-7008	1	Gasket-Cover, Crankcase ●	92153	92153-7043	4	Bolt (6X12) ●
11061	11061-7001	1	Gasket-Breather ●	92153A	92153-7054	17	Bolt (8X50) ●
13271	13271-7016	1	Plate ●				
14091	14091-7006	1	Cover ●				
49015	49015-6253	1	Cover-Crankcase ●				
49109	49109-7002	1	Element-Breather ●				
49120A	49120-7113	1	Crankcase ●				

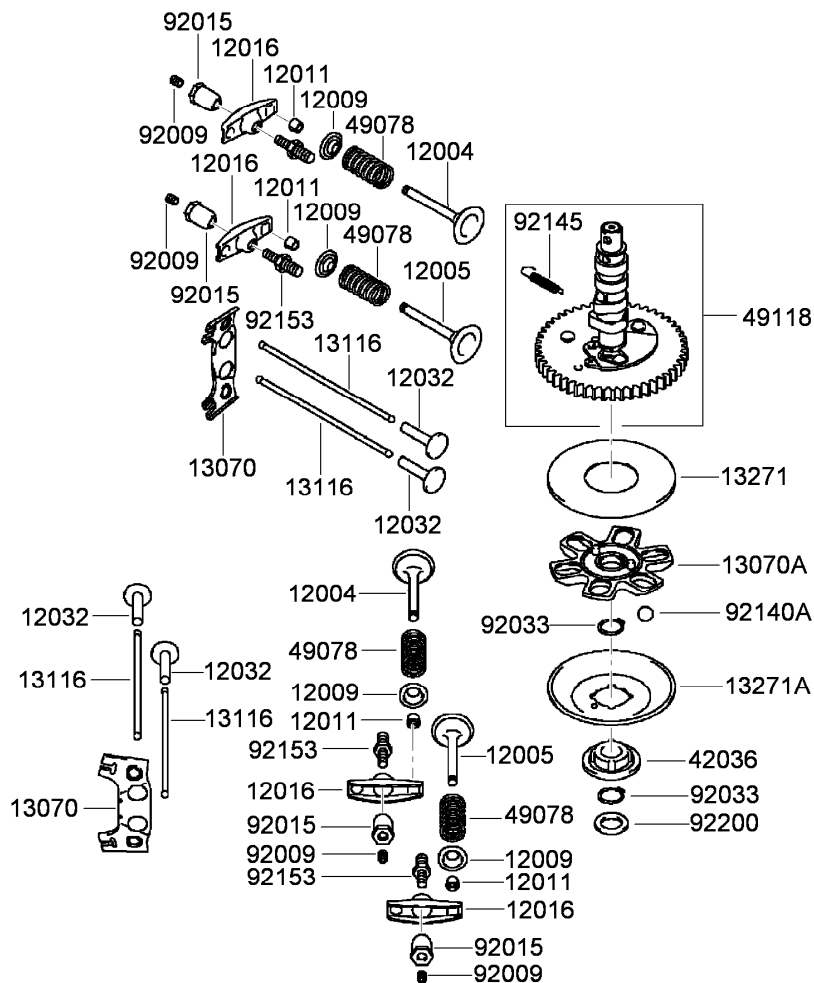
● Obtain parts from www.kawpowerepc.com



Piston and Crankshaft Assembly Kawasaki FH541V-GS30

<i>Ref.</i>	<i>Part Number</i>	<i>Qty.</i>	<i>Description</i>
13001	13001-7010	2	Piston-Engine ●
13002	13002-7001	2	Pin-Piston ●
13008	13008-6060	2	Piston Ring Set ●
13031	13031-7073	1	Crankshaft ●
13251	13251-7010	2	Connecting Rod ASM ●
92033	92033-7002	4	Ring-Snap ●
92151	92151-7017	4	Bolt (6X35) ●

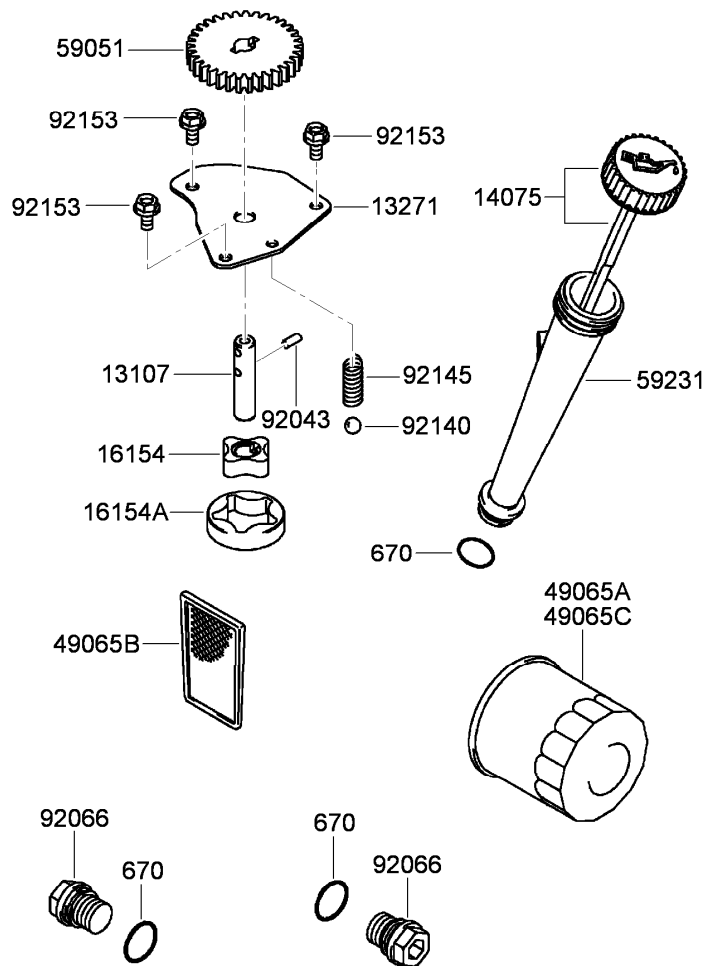
● Obtain parts from www.kawpowerepc.com



Valve and Camshaft Assembly Kawasaki FH541V-GS30

Ref.	Part Number	Qty.	Description
12004	12004-7003	2	Valve-Intake ●
12005	12005-7003	2	Valve-Exhaust ●
12009	12009-7001	4	Retainer-Spring, Valve ●
12011	12011-2056	8	Collet ●
12016	12016-7008	4	Arm-Rocker ●
12032	12032-7001	4	Tappet ●
13070	13070-7001	2	Guide ●
13070A	13070-7004	1	Guide ●
13116	13116-2057	4	Rod-Push ●
13271	13271-7007	1	Plate ●
13271A	13271-7021	1	Plate-Governor ●
42036	42036-7010	1	Sleeve ●
49078	49078-7001	4	Spring-Valve, Engine ●
49118	49118-7004	1	Camshaft ●
92009	92009-2341	4	Screw ●
92015	92015-2253	4	Nut ●
92033	92033-7001	2	Ring-Snap ●
92140A	92140-7005	6	Ball ●
92145	92145-7001	1	Spring ●
92153	92153-7019	4	Bolt ●
92200	92200-7001	1	Washer ●

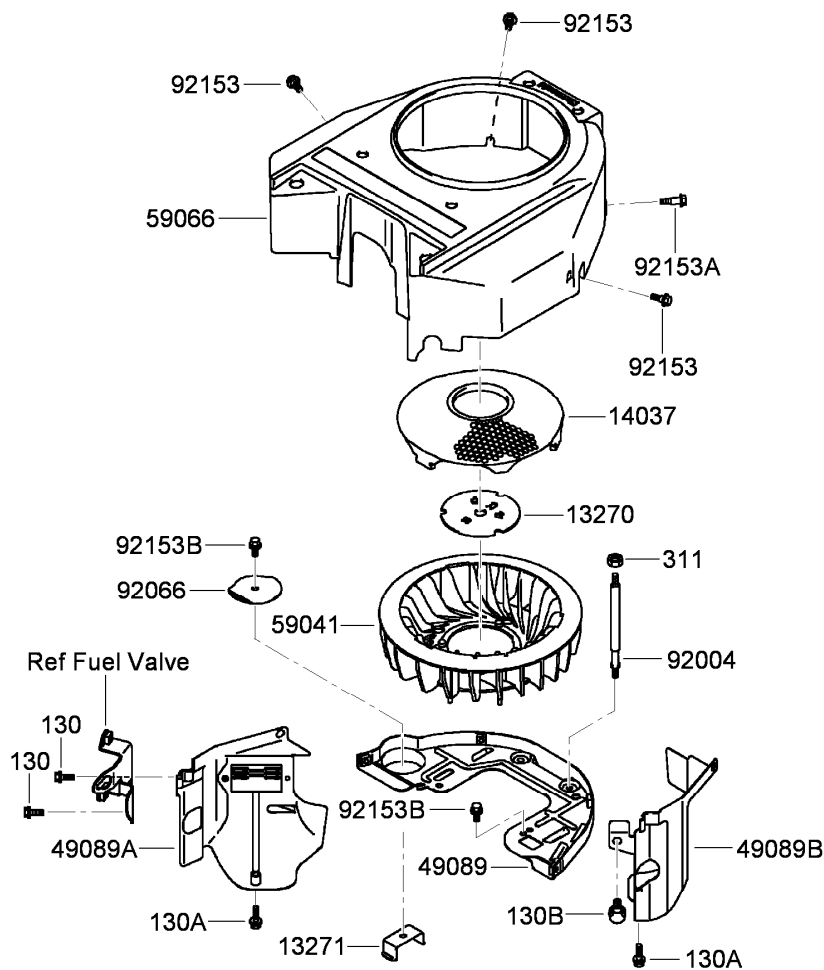
● Obtain parts from www.kawpowerepc.com



Lubrication Equipment Assembly Kawasaki FH541V-GS30

<i>Ref.</i>	<i>Part Number</i>	<i>Qty.</i>	<i>Description</i>
670	670D2016	3	O-Ring (16Mm) ●
13107	13107-7009	1	Shaft ●
13271	13271-7017	1	Plate ●
14075	14075-7009	1	Cap ASM ●
16154	16154-2053	1	Rotor-Pump (In) ●
16154A	16154-2054	1	Rotor-Pump (Out) ●
49065A	49065-2078	1	Filter-Oil (Part May Be Used As Substitute And Is Supplied Until The Stock Is Exhausted) ●
49065B	49065-7004	1	Filter-Oil ●
49065C	49065-7010	1	Filter-Oil ●
59051	59051-7011	1	Gear-Spur ●
59231	59231-7005	1	Filler ●
92043	92043-7003	2	Pin ●
92066	92066-7003	2	Plug ●
92140	92140-7003	1	Ball ●
92145	92145-7002	1	Spring ●
92153	92153-7043	3	Bolt (6X12) ●

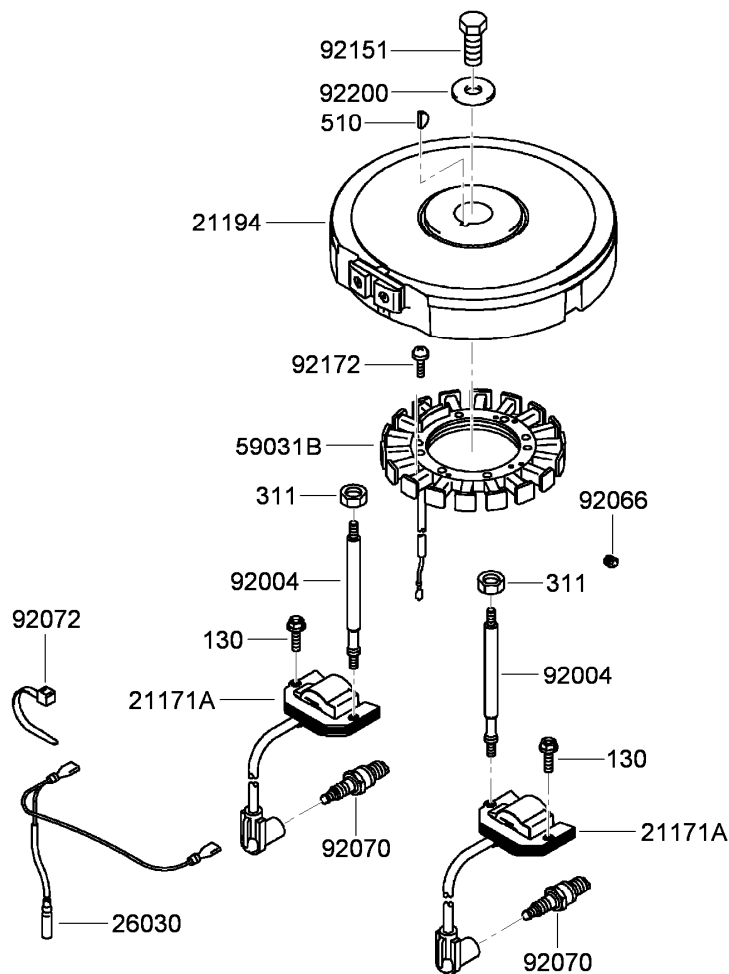
● Obtain parts from www.kawpowerepc.com



Cooling Equipment Assembly Kawasaki FH541V-GS30

Ref.	Part Number	Qty.	Description
130	130AA0616	2	Bolt-Flanged (6X16) ●
130A	130AA0625	2	Bolt-Flanged (6X25) ●
130B	130AA0816	1	Bolt-Flanged (8X16) ●
311	311AA0600	2	Nut-Hex (6Mm) ●
13270	13270-7007	1	Plate ●
13271	13271-7002	1	Plate ●
14037	14037-7025-9H	1	Screen ●
49089	49089-7032	1	Shroud-Engine ●
49089A	49089-7042	1	Shroud-Engine ●
49089B	49089-7043	1	Shroud-Engine ●
59041	59041-7012	1	Fan ●
59066	59066-7037	1	Housing-Fan ●
92004	92004-7006	2	Stud ●
92066	92066-7004	1	Plug ●
92153	92153-7007	3	Bolt ●
92153A	92153-7008	1	Bolt ●
92153B	92153-7043	3	Bolt (6X12) ●

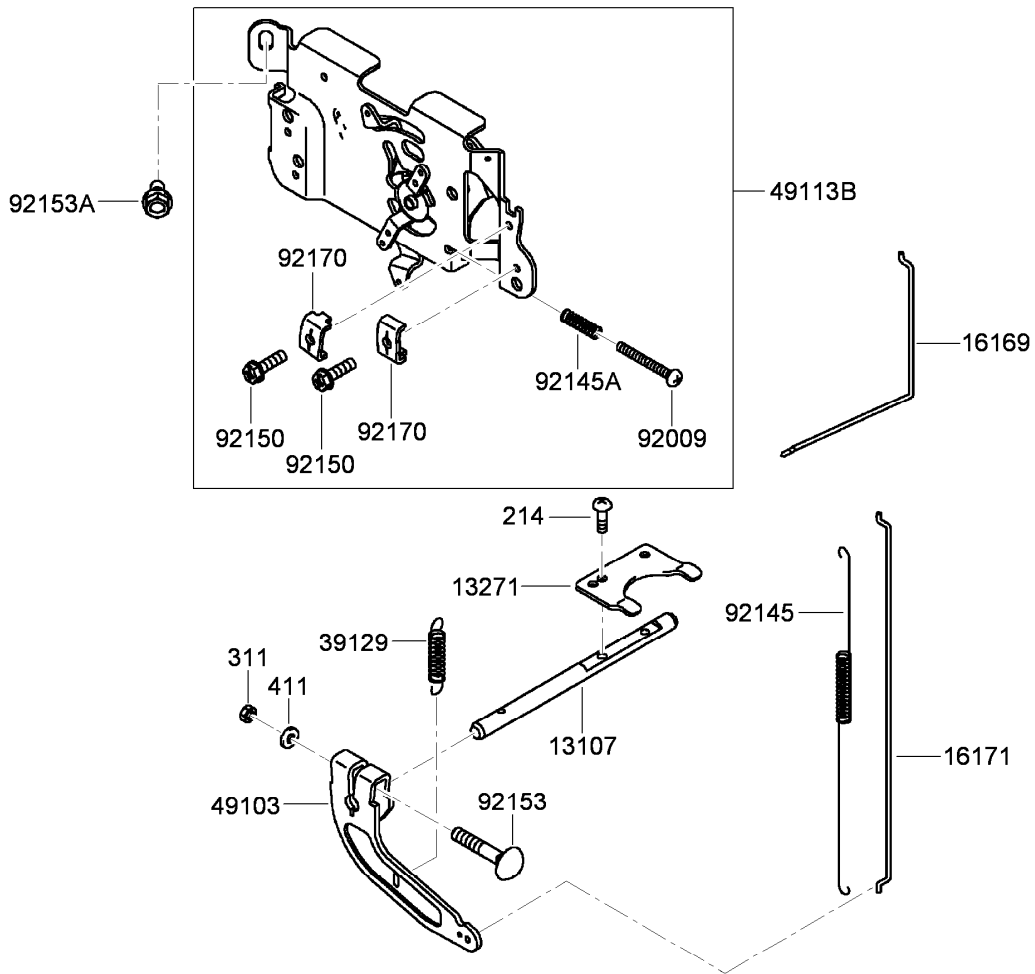
● Obtain parts from www.kawpowerepc.com



Electric Equipment Assembly Kawasaki FH541V-GS30

<i>Ref.</i>	<i>Part Number</i>	<i>Qty.</i>	<i>Description</i>
130	130AA0620	2	Bolt-Flanged (6X20) ●
311	311AA0600	2	Nut-Hex (6Mm) ●
510	510A5100	1	Key-Woodruff ●
21171A	21171-7034	2	Ignition Coil ASM ●
21194	21194-7026	1	Flywheel ●
26030	26030-7001	1	Harness ●
59031B	59031-7011	1	Coil-Charging ●
92004	92004-7009	2	Stud ●
92066	92066-7026	1	Plug ●
92070	92070-7003	2	Spark Plug (R C J 8 Y, Solid) ●
92072	92072-7003	3	Band ●
92151	92151-2097	1	Bolt (12X30) ●
92172	92172-7018	4	Screw (5X20) ●
92200	92200-7002	1	Washer ●

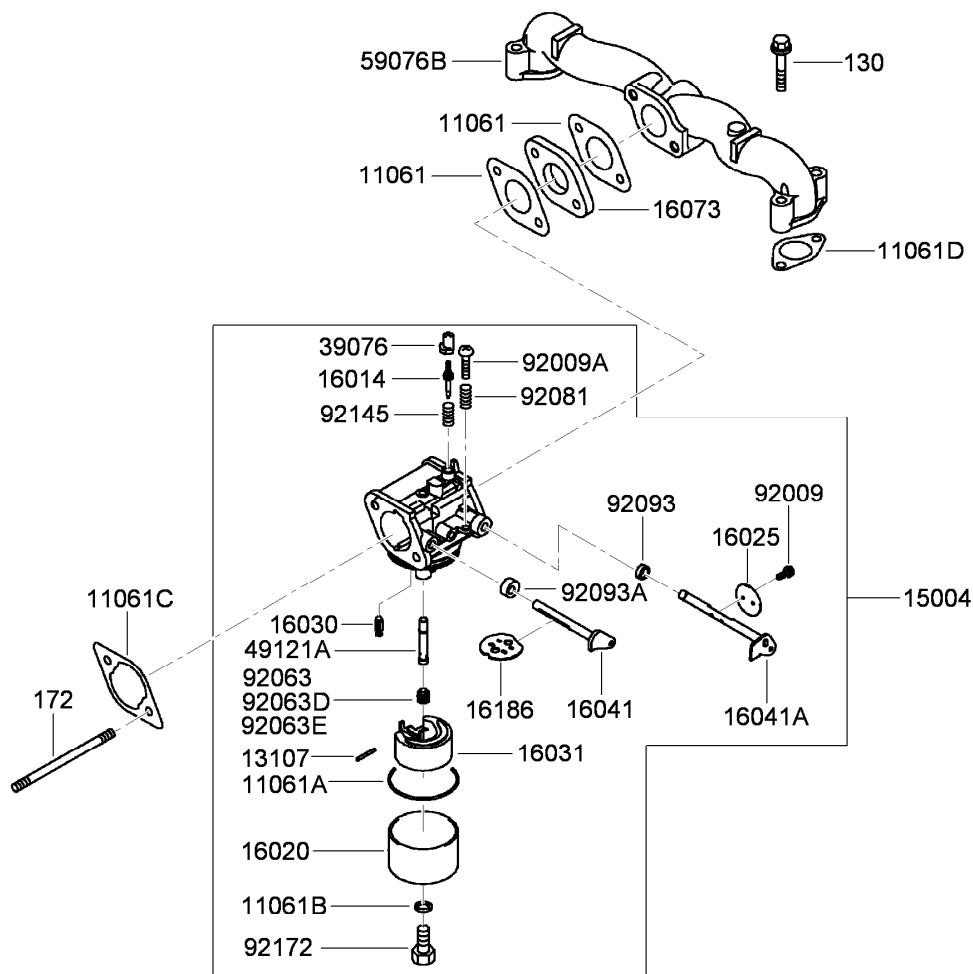
● Obtain parts from www.kawpowerepc.com



Control Equipment Assembly Kawasaki FH541V-GS30

Ref.	Part Number	Qty.	Description
214	214AA0408	2	Screw-Pan +-(4X8) ●
311	311AA0600	1	Nut-Hex (6Mm) ●
411	411AA0600	1	Washer-Plain (6Mm) ●
13107	13107-7010	1	Shaft ●
13271	13271-7032	1	Plate ●
16169	16169-7010	1	Link-Choke ●
16171	16171-7001	1	Link ●
39129	39129-7003	1	Spring-Governor ●
49103	49103-7004	1	Arm-Governor ●
49113B	49113-7054	1	Control Panel ASM ●
92009	92009-7007	1	Screw (4X35) ●
92145	92145-7003	1	Spring ●
92145A	92145-7005	1	Spring ●
92150	92150-2182	2	Bolt (5X18) ●
92153	92153-7033	1	Bolt (6X35) ●
92153A	92153-7043	2	Bolt (6X12) ●
92170	92170-7001	2	Clamp ●

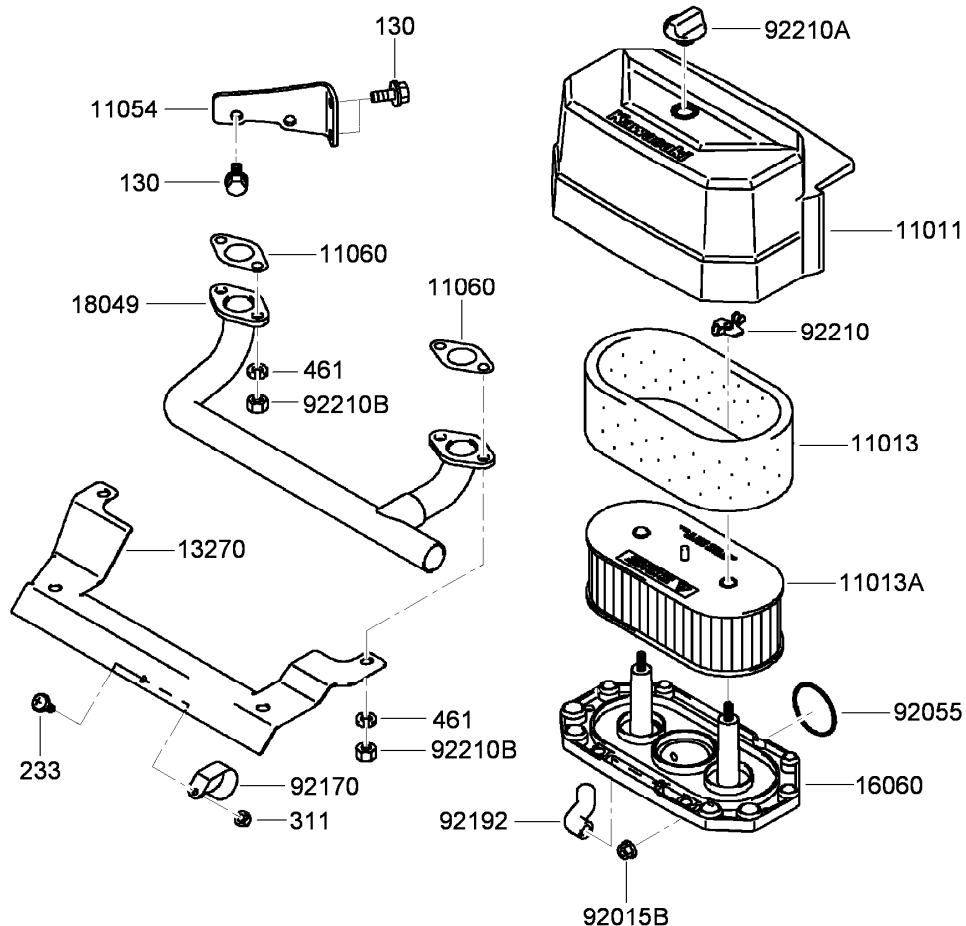
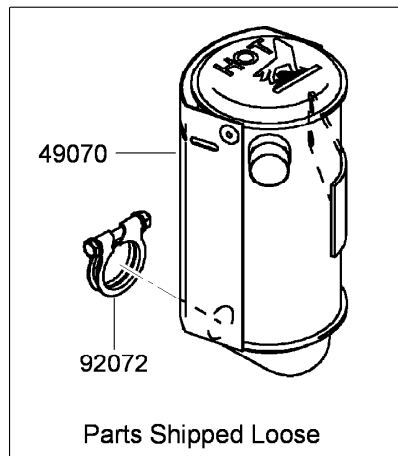
● Obtain parts from www.kawpowerepc.com



Carburetor Assembly Kawasaki FH541V-GS30

<i>Ref.</i>	<i>Part Number</i>	<i>Qty.</i>	<i>Description</i>	<i>Ref.</i>	<i>Part Number</i>	<i>Qty.</i>	<i>Description</i>
130	130AA0635	4	Bolt-Flanged (6X35) ●	16073	16073-7007	1	Insulator ●
172	172BA0690	2	Bolt-Stud (6X90) ●	16186	16186-7001	1	Choke Valve ASM ●
11061	11061-7004	2	Gasket-Insulator ●	39076	39076-7001	1	Limiter ●
11061A	11061-7009	1	Gasket-Chamber ●	49121A	49121-7017	1	Nozzle-Main ●
11061B	11061-7010	1	Gasket-Screw ●	59076B	59076-7017	1	Manifold-Intake ●
11061C	11061-7018	1	Gasket-Cleaner, Air ●	92009	92009-2083	2	Screw ●
11061D	11061-7019	2	Gasket ●	92009A	92009-2349	1	Screw ●
13107	13107-7018	1	Shaft ●	92063	92063-7029	1	Jet-Main, No.82 (6560 Ft) ●
15004	15004-7057	1	Carburetor ASM ●	92063D	92063-7147	1	Jet-Main, No.86 ●
16014	16014-7005	1	Screw-Air, Pilot ●	92063E	92063-7148	1	Jet-Main-No.84 (3280 Ft) ●
16020	16020-7003	1	Chamber-Float ●	92081	92081-2234	1	Spring ●
16025	16025-7006	1	Valve-Throttle ●	92093	92093-2100	1	Seal ●
16030	16030-7003	1	Valve-Float ●	92093A	92093-7003	1	Seal ●
16031	16031-7002	1	Float ●	92145	92145-7015	1	Spring ●
16041	16041-7016	1	Shaft-Choke, Carburetor ●	92172	92172-7002	1	Screw ●
16041A	16041-7018	1	Shaft-Throttle, Carburetor ●				

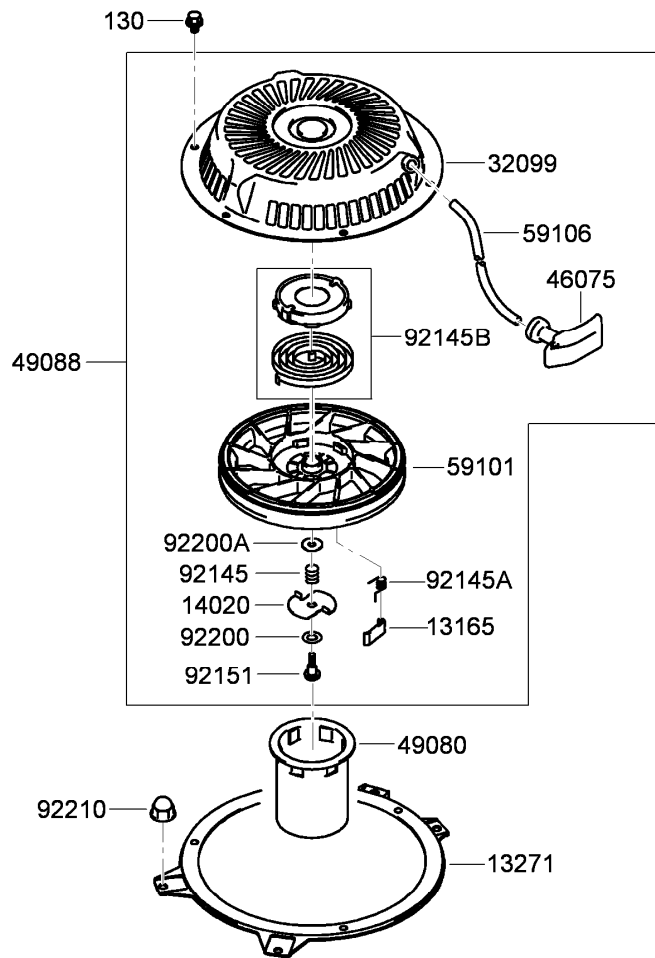
● Obtain parts from www.kawpowerepc.com



Air Filter and Muffler Assembly Kawasaki FH541V-GS30

Ref.	Part Number	Qty.	Description
130	130AA0816	3	Bolt-Flanged (8X16) ●
233	233AA0416	1	Screw-Pan, Wp +-(4X16) ●
311	311AA0400	1	Nut-Hex (4Mm) ●
461	461DA0800	4	Washer-Spring (8Mm) ●
11011	11011-7046	1	Case-Filter, Air ●
11013	11013-7025	1	Element-Filter, Air ●
11013A	11013-7031	1	Element-Filter, Air ●
11054	11054-7002-9H	1	Bracket ●
11060	11060-7021	2	Gasket-Muffler ●
13270	13270-7008	1	Plate ●
16060	16060-7016	1	Pipe-Intake ●
18049	18049-7001	1	Pipe-Exhaust ●
49070	49070-7021	1	Muffler ●
92015B	92015-1367	2	Nut ●
92055	92055-7015	1	O-Ring ●
92072	92072-7012	1	Band ●
92170	92170-7002	1	Clamp ●
92192	92192-7010	1	Tube ●
92210	92210-7004	2	Nut (M6) ●
92210A	92210-7019	1	Nut ●
92210B	92210-7027	4	Nut (M8) ●

● Obtain parts from www.kawpowerepc.com



Starter Assembly Kawasaki FH541V-GS30

Ref.	Part Number	Qty.	Description
130	130AA0608	3	Bolt-Flanged (6X8) ●
13165	13165-7001	2	Pawl-Starter, Recoil ●
13271	13271-7003-9H	1	Plate ●
14020	14020-7001	1	Retainer ●
32099	32099-7002	1	Case-Starter, Recoil ●
46075	46075-7001	1	Grip-Starter, Recoil ●
49080	49080-7001	1	Pulley-Starting ●
49088	49088-7013	1	Starter-Recoil ●
59101	59101-7001	1	Reel-Starter, Recoil ●
59106	59106-7005	1	Rope ●
92145	92145-7006	1	Spring ●
92145A	92145-7007	2	Spring ●
92145B	92145-7008	1	Spring ●
92151	92151-7008	1	Bolt ●
92200	92200-7004	1	Washer ●
92200A	92200-7005	1	Washer ●
92210	92210-0003	4	Nut ●

● Obtain parts from www.kawpowerepc.com

56033



56070



56080



56080B



Label Assembly Kawasaki FH541V-GS30

Ref.	Part Number	Qty.	Description
56033	56033-7001	1	Label-Manual ●
56070	56070-7001	1	Label-Warning ●
56080	56080-2077	1	Label-Brand ●
56080B	56080-7056	1	Label-Brand ●

● Obtain parts from www.kawpowerepc.com

Attachments and Accessories

For 30099 Commercial Walk-Behind Mower, Floating Deck T-Bar Gear with 52in TURBO FORCE Cutting Unit

Product Name	Model/Part
Blade-Recycler, 18 Inch.....	105-7779-03
Blade-Med Flow, 18 Inch	105-7794-03
Blade-Low Flow, 18 Inch.....	105-7795-03
Blade-Atomic, 18 Inch.....	105-7796-03
Turbo Baffle Kit	107-1634
Blade-Hi-Flow, 18 Inch (6 Pack).....	108-1117
Blade-Atomic, 18 Inch (6 Pack).....	108-1118
Blade-Lo-Flow, 18 Inch (6 Pack).....	110-0406
Blade-Recycler, 18 Inch (6 Pack).....	110-0408
Blade-Med-Flow, 18 Inch (6 Pack).....	110-0409
52 Inch Recycler Kit.....	110-2040
Weight-Cast.....	112-7059-01
Weight Kit	112-9971
Operator-Controlled Discharge Chute Kit	115-4195
Soft Bag (3 Bushel).....	30104
Tru Trak Sulky.....	30110

Notes:

Notes:

Notes:



Count on it.