



Commercial Walk-Behind Mower Fixed Deck Pistol Grip Hydro with 48in TURBO FORCE[®] Cutting Unit

Model No. 30988 - 290000001 and up.

Parts Catalog

Ordering Replacement Parts

To order replacement parts, please supply the part number, the quantity, and the description of each part desired.

Understanding Reference Numbers

Each Identified part in an illustration has a reference number. The reference number for a part also appears in the parts list, along with other information about the part.

This catalog uses two special reference number formats, one to indicate parts in a service assembly and another to indicate the quantity of a given part in an illustration.

Service Assembly Reference Numbers

Parts in service assemblies have reference numbers in the form a:b. The a represents the reference number of the entire service assembly and the b represents a sequential number unique to each part within the service assembly.

For example, a wheel assembly might be identified by reference number 6, the tire by 6:1, the valve by 6:2, and the wheel by 6:3. When you order the assembly identified by reference number 6, you receive all parts identified by reference numbers 6:1, 6:2, and 6:3. However, you may also order any part individually. Reference numbers of this type appear in illustrations and in part lists.

Reference Numbers Indicating Quantity

In an illustration, if a reference number indicates more than one part, the reference number has the form nX y. The n represents the quantity of the part, the X is the multiplication symbol, and the y represents the reference number.

For example, in an illustration, the reference number 2X 37 means that two of the parts identified by reference number 37 are indicated.

Contents

Description	Page	Description	Page
Engine and Fuel System Assembly 3	Valve and Camshaft Assembly Kawasaki FH541V-FS23 22
Drive Assembly 4	Lubrication Equipment Assembly Kawasaki FH541V-FS23 23
Parking Brake Assembly 6	Cooling Equipment Assembly Kawasaki FH541V-FS23 24
Frame and Wheel Assembly 7	Electric Equipment Assembly Kawasaki FH541V-FS23 25
Hydraulic System Assembly 8	Control Equipment Assembly Kawasaki FH541V-FS23 26
Lower Control Assembly 10	Carburetor Assembly Kawasaki FH541V-FS23 27
Upper Handle Assembly 11	Air Filter and Muffler Assembly Kawasaki FH541V-FS23 28
Control Handle Assembly No. 110-6907 13	Fuel Tank and Valve Assembly Kawasaki FH541V-FS23 29
Deck Assembly 14	Starter Assembly Kawasaki FH541V-FS23 30
Deck Assembly No. 110-4909 15	Label Assembly Kawasaki FH541V-FS23 31
Deflector Assembly No. 110-0758 16	Attachments and Accessories List 32
Sheave, Spindle and Blade Assembly 17		
Idler Assembly 18		
Caster Assembly 19		
Cylinder and Crankcase Assembly Kawasaki FH541V-FS23 20		
Piston and Crankshaft Assembly Kawasaki FH541V-FS23 21		

Part Description Abbreviations

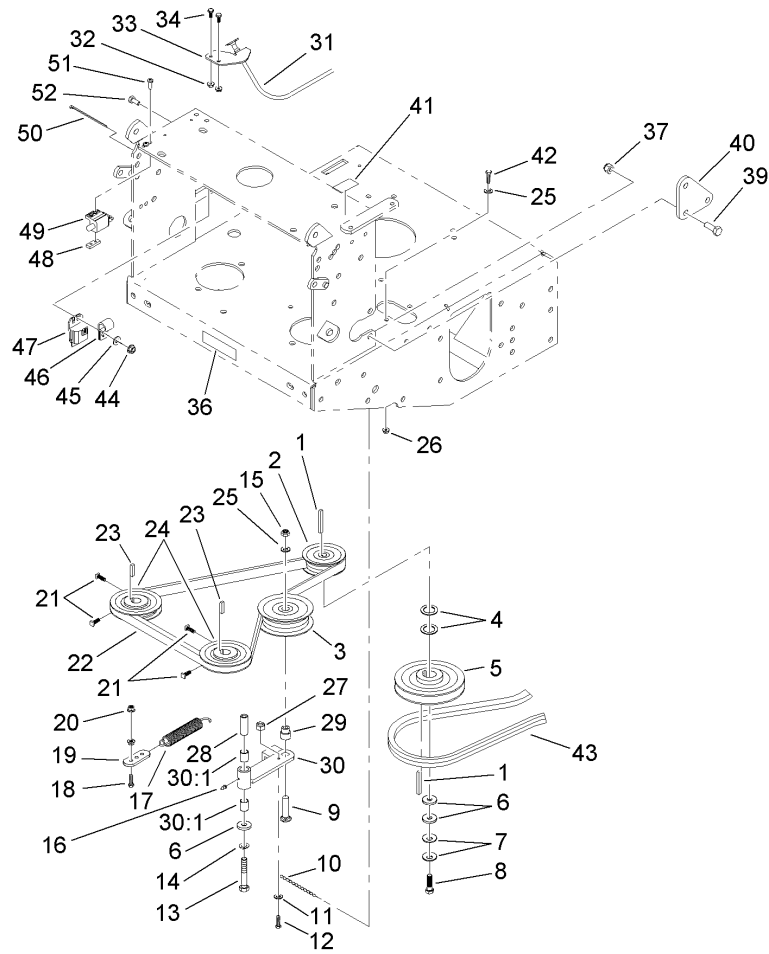
Part descriptions in this catalog may include the following abbreviations.

AR. as required	HWHTF. hex washer head thread forming
ASM. assembly	HYD. hydraulic
BBC. blade brake clutch	LH. left hand
CARR. carriage	NI. nylon insert
CCW. counter clock wise	NPTF. national pipe thread fine
CW. clockwise	PFH. phillips flat head
DEG. degrees	PPH. phillips pan head
ECM. electronic control module	PPHTF. phillips pan head thread forming
EXT. external	PRH. phillips round head
FH. flat head	PTH. phillips truss head
GA. gauge	PTO. power-take-off
HD. heavy-duty	RH. right hand
HF. hex flange	ROPS. roll-over protection system
HH. hex head	SFH. slotted fillister head
HHF. hex head flange	SHH. slotted hex head
HHFTF. hex head flange thread forming	SHWH. slotted hex washer head
HJ. hex jam	SPH. slotted pan head
HLH. hex lag head	SQH. square head
HOC. height-of-cut	SRH. slotted round head
HSBH. hex socket button head	STD. standard
HSFH. hex socket flat head	TAP. self tapping
HSH. hex socket head	TTH. torx truss head
HWH. hex washer head	

Footnotes

- ❶ Not illustrated
- ❷ Obtain parts from www.kawpowerepc.com

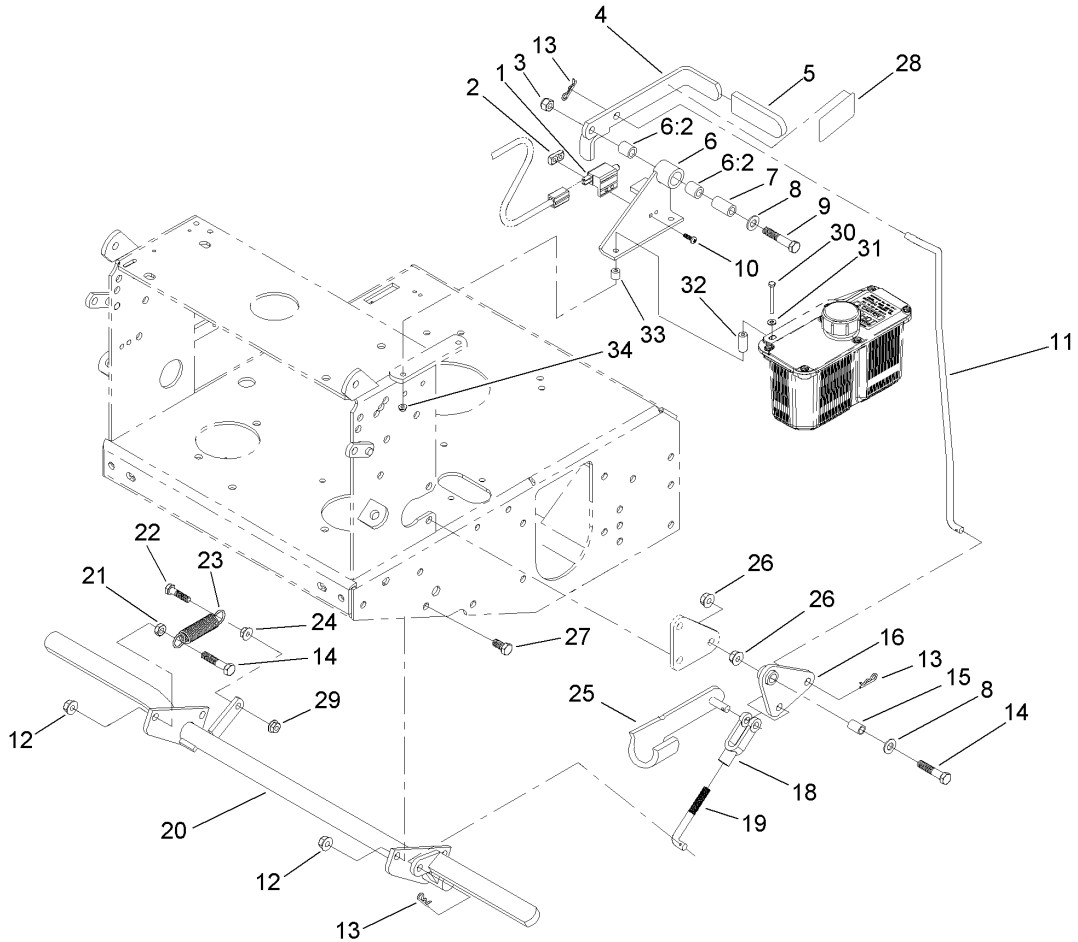
- ❸ Not serviced separately



Drive Assembly

Ref	Part No.	Qty.	Description
1	1-807259	2	Key
2	1-653035	1	Pulley
3	1-603843	1	Pulley-Idler
4	1-523157	2	Washer-Spacer
5	110-4890	1	Pulley ASM
6	1-373034	3	Washer
7	1-603610	2	Washer-Spring
8	3212-6	1	Screw-HH
9	3231-29	1	Screw-CARR
10	1-323365	1	Chain-Link, Twist
11	3256-14	1	Washer-Flat
12	1-809069	1	Screw-HSH
13	323-12	1	Screw-HH
14	1-373034	1	Washer
15	32128-21	1	Nut-HF
16	302-19	1	Fitting-Grease
17	1-603402	1	Spring-Extension
18	322-5	1	Screw-HH
19	1-603801	1	Anchor-Spring
20	32128-20	2	Nut-HF
21	1-803050	4	Screw-Set
22	106-2740	1	V-Belt
23	1-807272	2	Key
24	1-413010	2	Sheave ASM

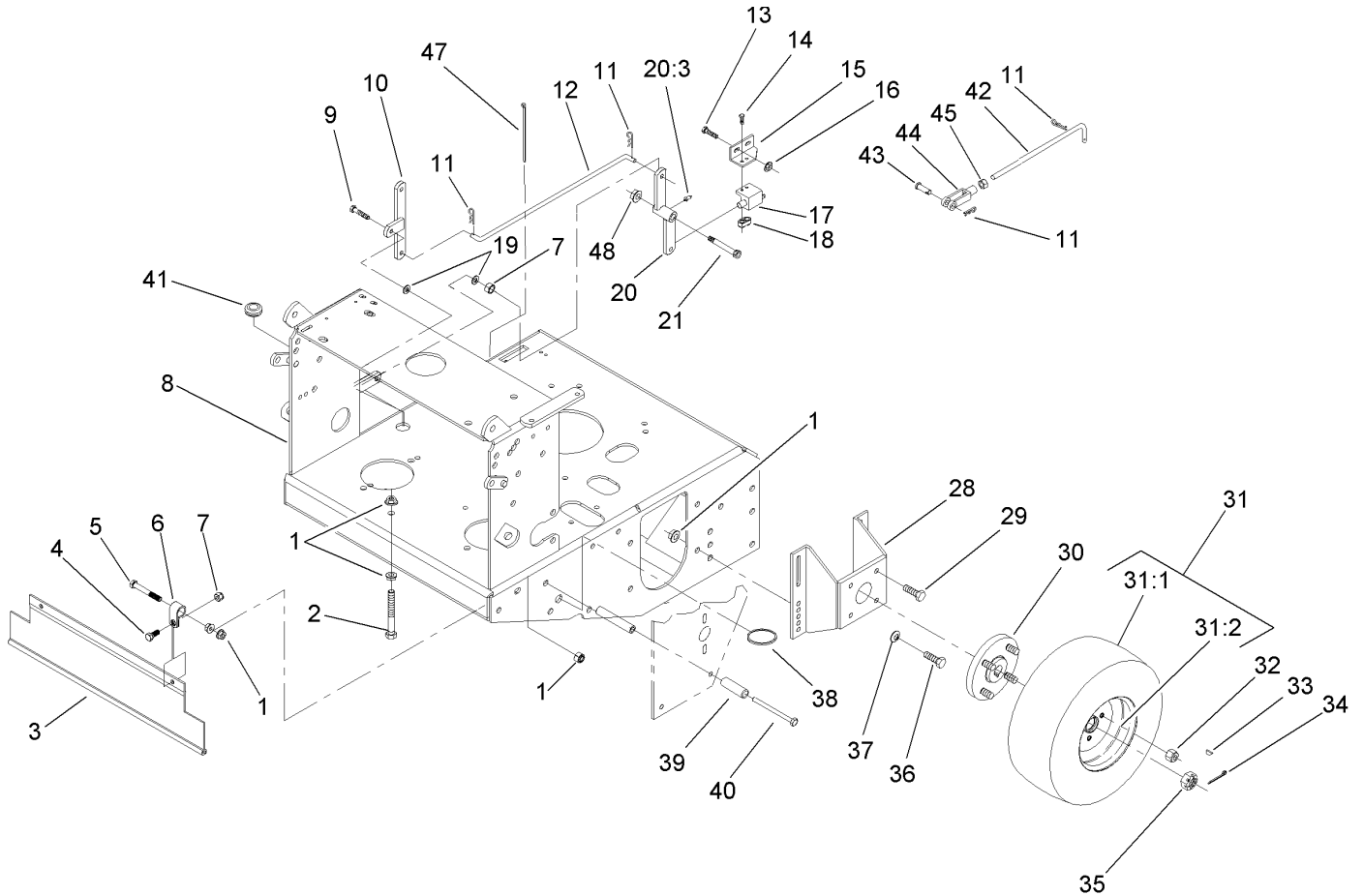
Ref	Part No.	Qty.	Description
25	3256-24	2	Washer-Flat
26	3290-357	1	Nut-HHF, Whiz
27	3296-2	1	Nut-Lock, NI
28	1-603044	1	Bushing
29	1-603496	1	Bushing-Idler
30	1-602521	1	Idler Arm ASM
30:1	103-4681	2	Sleeve-Bearing
31	103-1796	1	Cable-Choke
32	32128-33	2	Nut-HF
33	103-1797-01	1	Bracket-Cable, Choke
34	321-3	2	Screw-HH
36	98-0776	1	Decal-Caution
37	3296-39	2	Nut-Lock, NI
39	323-6	2	Screw-HH
40	1-413497	1	Bellcrank
41	95-2814	1	Decal-Shut Off, Fuel
42	323-7	1	Screw-HH
43	110-0543	1	Belt-V
44	3296-42	1	Nut-Lock, NI
45	3256-22	1	Washer-Flat
46	1-603727	1	Clip-Loom
47	1-323430	1	Module-Interlock
48	1-633181	1	Plate-Tapped
49	1-513051	1	Switch-Open, Normally



Parking Brake Assembly

Ref	Part No.	Qty.	Description
1	1-513051	1	Switch-Open, Normally
2	1-633181	1	Plate-Tapped
3	3296-39	1	Nut-Lock, NI
4	1-412501-03	1	Lever-Parkbrake
5	1-303020	1	Grip-Lever
6	1-414504	1	Bracket ASM
6:2	1-413347	2	Sleeve-Bushing
7	1-413344	1	Bushing-Pivot
8	3256-24	2	Washer-Flat
9	323-10	1	Screw-HH
10	3290-500	2	Screw-PPH
11	1-413496	1	Linkage-Upper
12	3296-39	4	Nut-Lock, NI
13	1-806003	3	Pin-Cotter, Hair
14	323-9	2	Screw-HH
15	1-303548	1	Bushing-Plastic
16	1-414508	1	Bellcrank ASM
18	1-633131	1	Yoke-Linkage, Brake
19	1-413489	1	Linkage-Lower
20	103-2004-03	1	Brake
21	3218-3	1	Nut-Jam
22	322-6	1	Screw-HH
23	1-323161	1	Spring-Idler
24	32128-20	1	Nut-HF

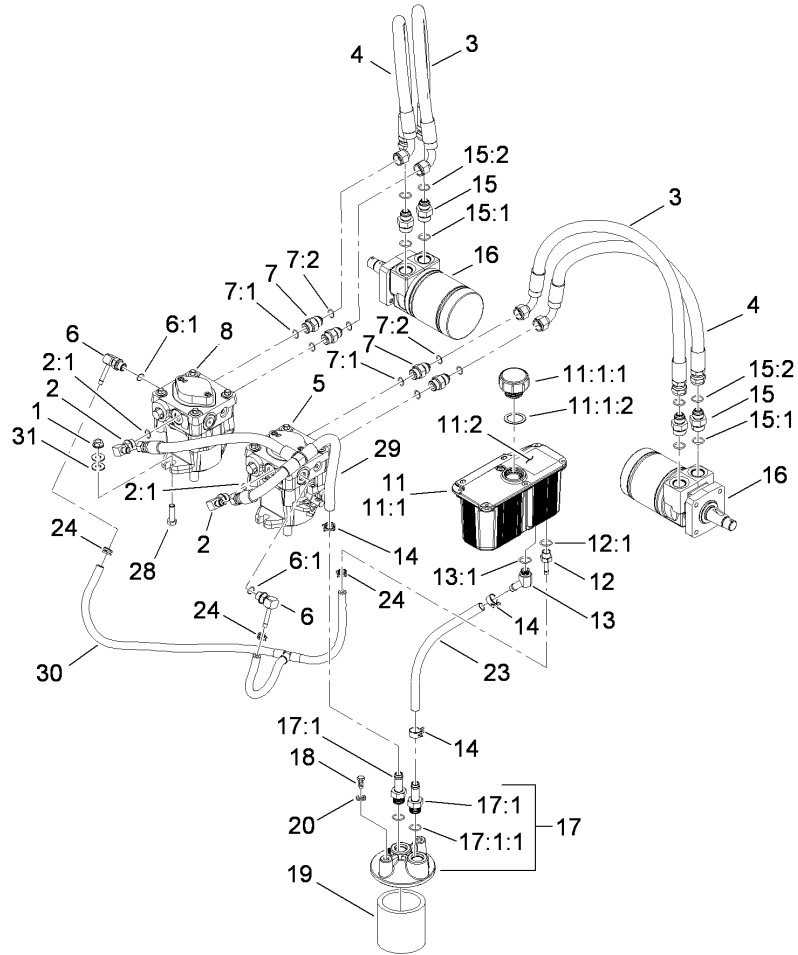
Ref	Part No.	Qty.	Description
25	103-2399	1	Pin-Spring, Clevis
26	32128-21	2	Nut-HF
27	323-6	3	Screw-HH
28	103-2103	1	Decal-Brake, Park
29	3296-29	1	Nut-Lock, NI
30	321-23	2	Screw-HH
31	3256-22	2	Washer-Flat
32	103-2191	2	Spacer
33	1-323549	2	Spacer
34	32128-33	2	Nut-HF



Frame and Wheel Assembly

Ref	Part No.	Qty.	Description
1	3290-357	15	Nut-HHF, Whiz
2	323-11	1	Screw-HH
3	103-2056	1	Shield-Drag
4	322-3	2	Screw-HH
5	323-13	2	Screw-HH
6	1-413510	2	Clip-Loom
7	3296-29	3	Nut-Lock, NI
8	110-6915-01	1	Hydro Frame ASM
9	322-6	1	Screw-HH
10	1-322090-01	1	Bellcrank ASM
11	1-806003	4	Pin-Cotter, Hair
12	1-323172	1	Linkage-Engage, Blade
13	321-3	2	Screw-HH
14	3290-500	2	Screw-PPH
15	1-323213	1	Bracket-Switch, Blade
16	32128-33	2	Nut-HF
17	1-513051	1	Switch-Open, Normally
18	1-633181	1	Plate-Tapped
19	3256-23	2	Washer-Flat
20	1-322108	1	Bellcrank ASM
20:3	302-40	1	Fitting-Grease
21	1-809062	1	Screw
28	1-402062-01	2	Mount-Motor
29	3234-12	8	Screw-HHF

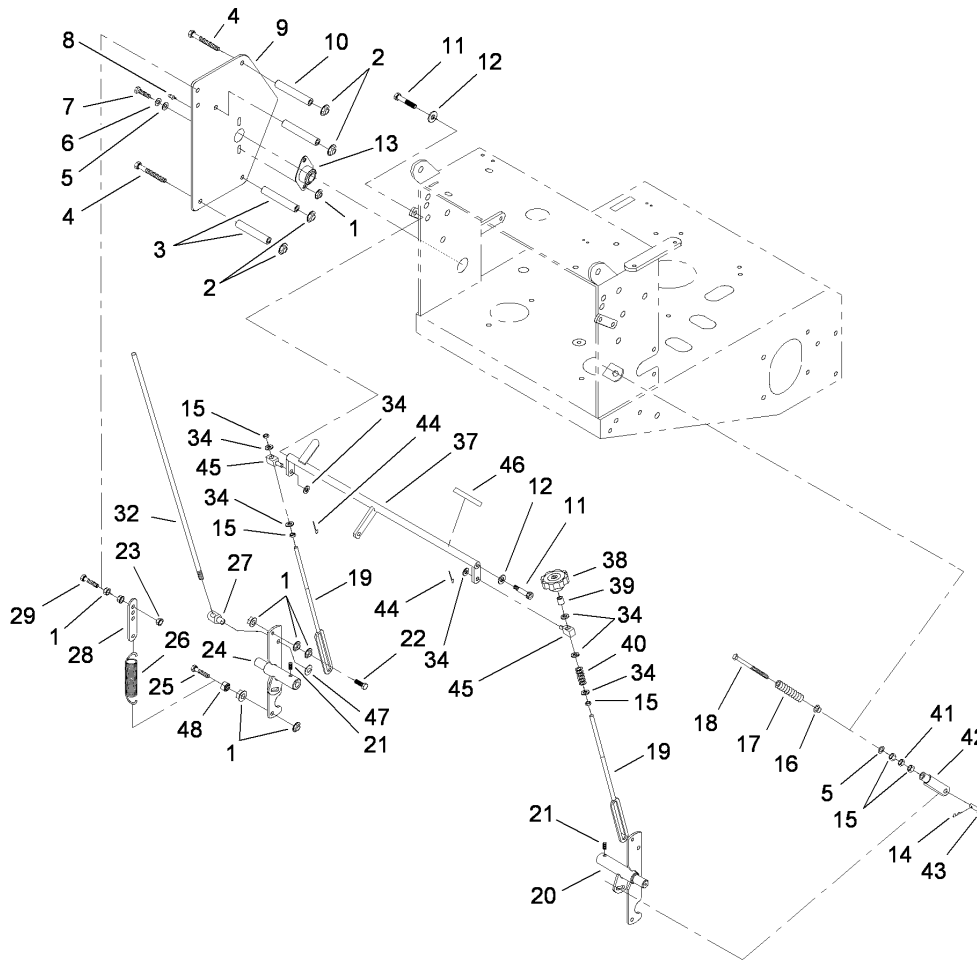
Ref	Part No.	Qty.	Description
30	1-602997	2	Hub ASM W/Studs
31	1-613263	2	Wheel And Tire ASM
31:1	1-613264	1	Tire-Turfmaster
31:2	1-603715	1	Wheel-Rim
32	242-50	8	Nut-Lug
33	1-807019	2	Key-Woodruff
34	1-806800	2	Pin-Cotter
35	32136-5	2	Nut-Hex, Slotted
36	323-6	8	Screw-HH
37	98-5975	8	Washer-Belleville
38	1-323366	1	Ring-Split
39	105-4820	1	Spacer-Short
40	323-23	1	Screw-HH
41	1-543296	1	Grommet
42	1-323174	1	Arm-Linkage, Assist
43	1-808280	1	Pin-Clevis
44	1-303105	1	Yoke-Adjustable
45	3219-2	1	Nut-Hex
47	1-303287	2	Tie-Plastic
48	32128-21	1	Nut-HF



Hydraulic System Assembly

Ref	Part No.	Qty.	Description
1	3290-357	4	Nut-HHF, Whiz
2	103-1802	2	Fitting-HYD, 90 DEG
2:1	1-603921	1	O-Ring
3	1-323241	2	Hose-Pressure, High
4	1-613034	2	Hose-Pressure, High
5	109-4987	1	Pump-HYD
●5:1	103-2664	1	Input Shaft Kit
●5:2	94-6922	1	Bearing-Thrust
●5:3	103-2666	1	Cylinder Block Kit
●5:4	105-6185	1	Plate-Valve
●5:5	105-6184	1	Seal Overhaul Kit
6	103-1799	2	Elbow-90 DEG
6:1	237-42	1	O-Ring
7	1-603990	4	Fitting-Straight
7:1	1-603920	1	O-Ring
7:2	1-603992	1	O-Ring
8	109-4988	1	Pump-HYD
●8:1	103-2664	1	Input Shaft Kit
●8:2	94-6922	1	Bearing-Thrust
●8:3	103-2666	1	Cylinder Block Kit
●8:4	105-6185	1	Plate-Valve
●8:5	105-6184	1	Seal Overhaul Kit
11	107-8433	1	HYD Reservoir ASM
●11:1		1	Reservoir-HYD

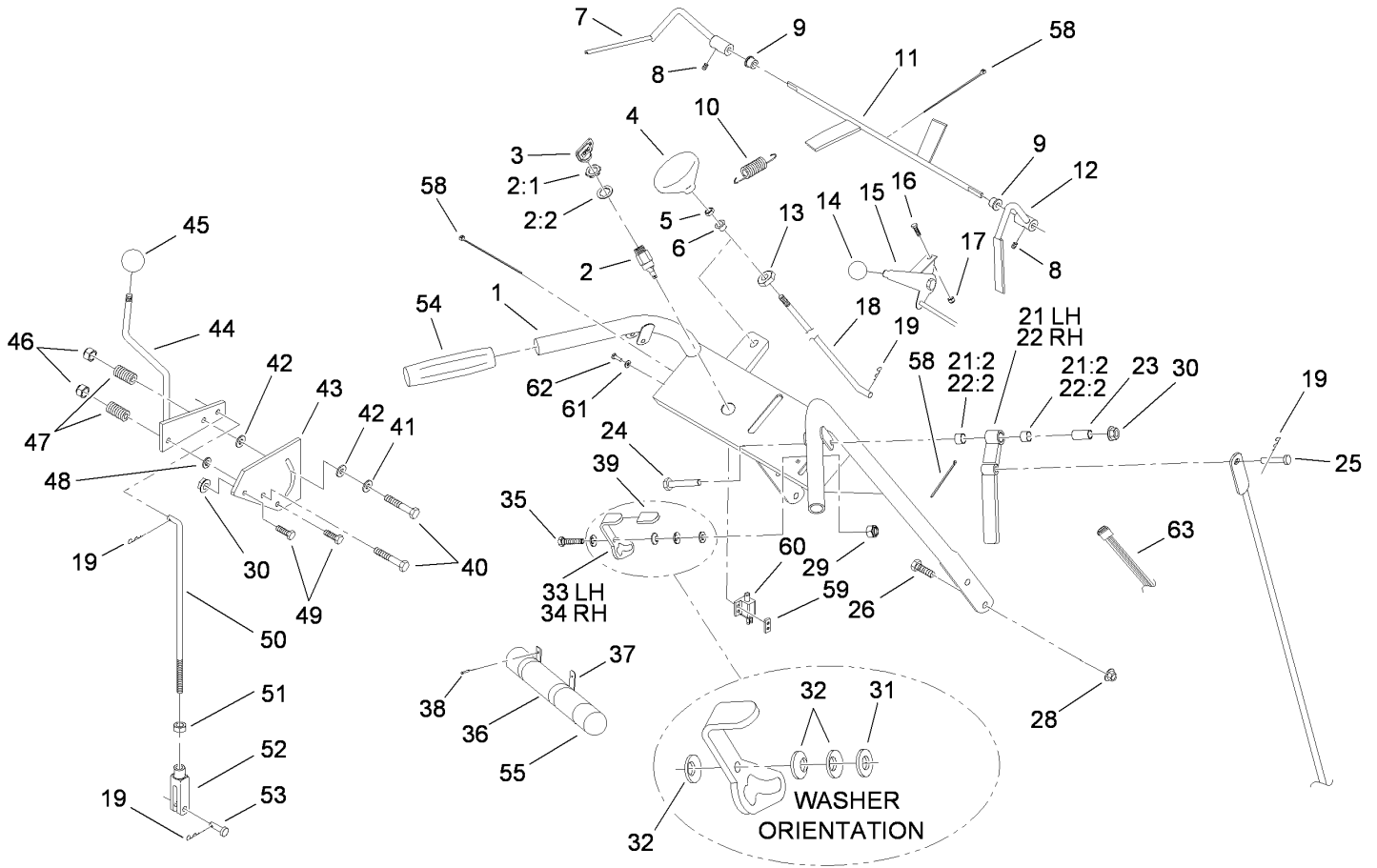
Ref	Part No.	Qty.	Description
11:1:1	103-1948	1	Cap-Reservoir, HYD
11:1:2	103-1949	1	Gasket-Cap
11:2	115-4212	1	Decal-Warning
12	103-1801	1	Adapter-Straight
12:1	237-42	1	O-Ring
13	103-1807	1	Elbow-45 DEG
13:1	237-42	1	O-Ring
14	103-1988	3	Clamp-Hose
15	1-603991	4	Fitting-Straight
15:1	237-80	1	O-Ring
15:2	1-603992	1	O-Ring
16	1-603718	2	Motor-Wheel
●16:1	1-000119	1	Seal Kit
17	103-2889	1	Filter Head ASM
17:1	103-1912	2	Adapter-Straight
17:1:1	237-42	1	O-Ring
18	321-3	2	Screw-HH
19	1-633750	1	Filter-Oil, HYD
20	1-805004	2	Washer-Lock
23	103-2959	1	Hose-Charge
24	103-1716	3	Clamp-Hose
28	323-7	4	Screw-HH
29	103-3914	1	Charge Hose ASM
30	103-4019	1	Case Drain Hose ASM



Lower Control Assembly

Ref	Part No.	Qty.	Description
1	32128-20	18	Nut-HF
2	3290-357	7	Nut-HHF, Whiz
3	1-323197-01	4	Spacer-Shield
4	323-16	7	Screw-HH
5	3256-2	6	Washer-Flat
6	1-805005	4	Washer-Lock
7	322-3	4	Screw-HH
8	302-19	2	Fitting-Grease
9	110-4897-01	2	Shield-Control, Hydro
10	1-323195-01	4	Spacer-Shield
11	1-809056	2	Screw
12	3256-24	2	Washer-Flat
13	1-633102	2	Bearing-Flange, Side
14	1-806003	2	Pin-Cotter, Hair
15	3219-2	7	Nut-Hex
16	109-3769	2	Bushing-Nylon, Flanged
17	1-603807	2	Spring-Return, Neutral
18	1-603737	2	Bolt-Return, Neutral
19	1-413350	2	Link-Control, Speed
20	103-4796-01	1	Shaft-Control, RH
21	3246-4	2	Screw-Set
22	1-403180	2	Screw-HH
23	3296-29	2	Nut-Lock, NI
24	103-1190-01	1	Shaft-Control, LH

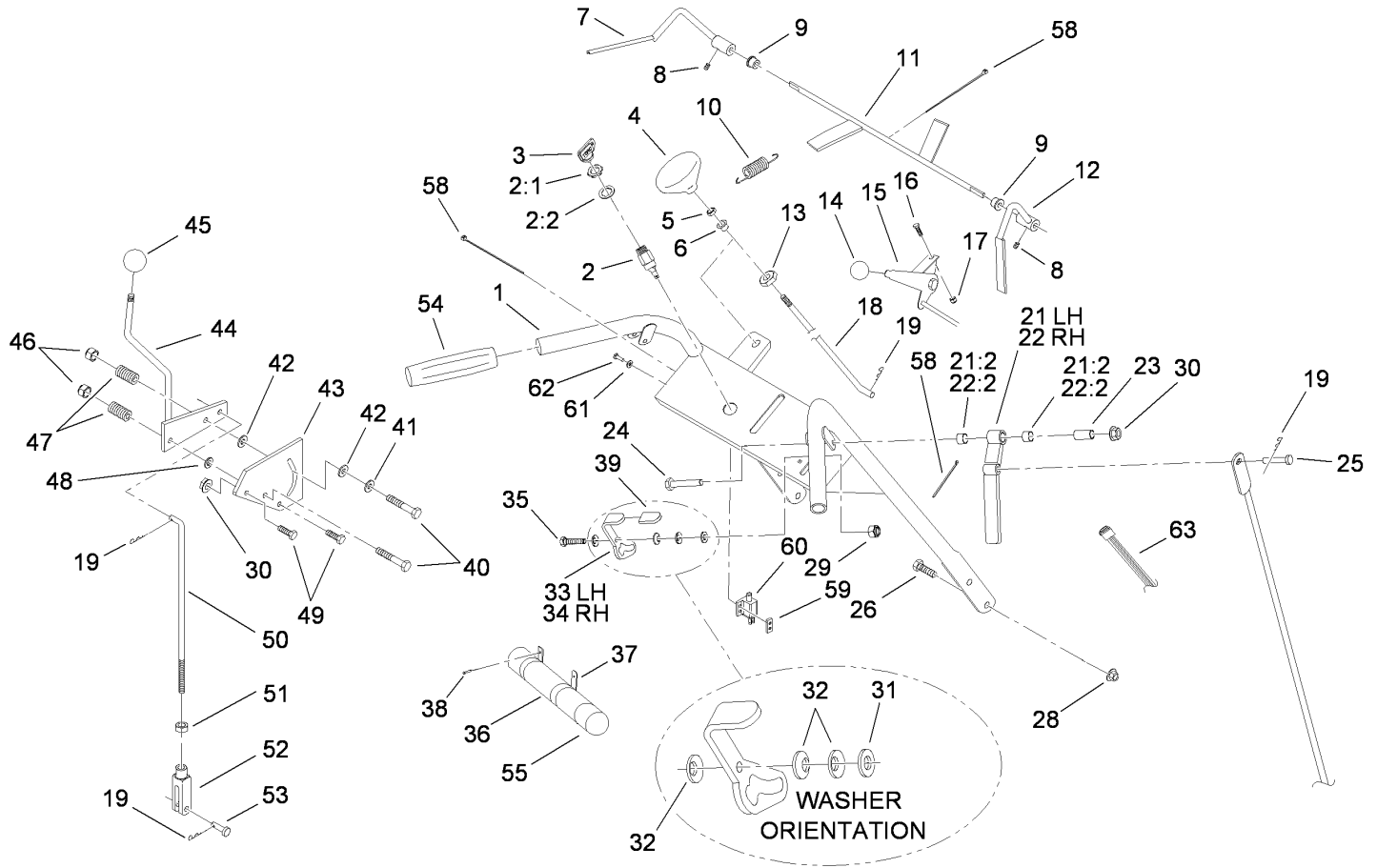
Ref	Part No.	Qty.	Description
25	322-6	2	Screw-HH
26	1-603693	2	Spring-Extension
27	103-1235	2	Swivel-Lever, Drive
28	1-613089	2	Tab-Spring, Extension
29	1-800016	2	Bolt-TAP, HH
32	1-413219	2	Rod-Lever, Drive
34	3256-23	7	Washer-Flat
37	1-412203-01	1	Crank-Control, Speed
38	1-413151	1	Knob-Tracking
39	1-603903	1	Spacer
40	1-323245	1	Spring-Compression
41	3220-2	2	Nut-Jam
42	1-303105	2	Yoke-Adjustable
43	1-808280	2	Pin-Clevis
44	3272-5	2	Pin-Cotter
45	1-603676	2	Swivel-Adjustable, Short
46	105-4109	1	Decal-Tracking
47	32151-47	2	Ring-Retaining
48	3218-2	2	Nut-Jam



Upper Handle Assembly

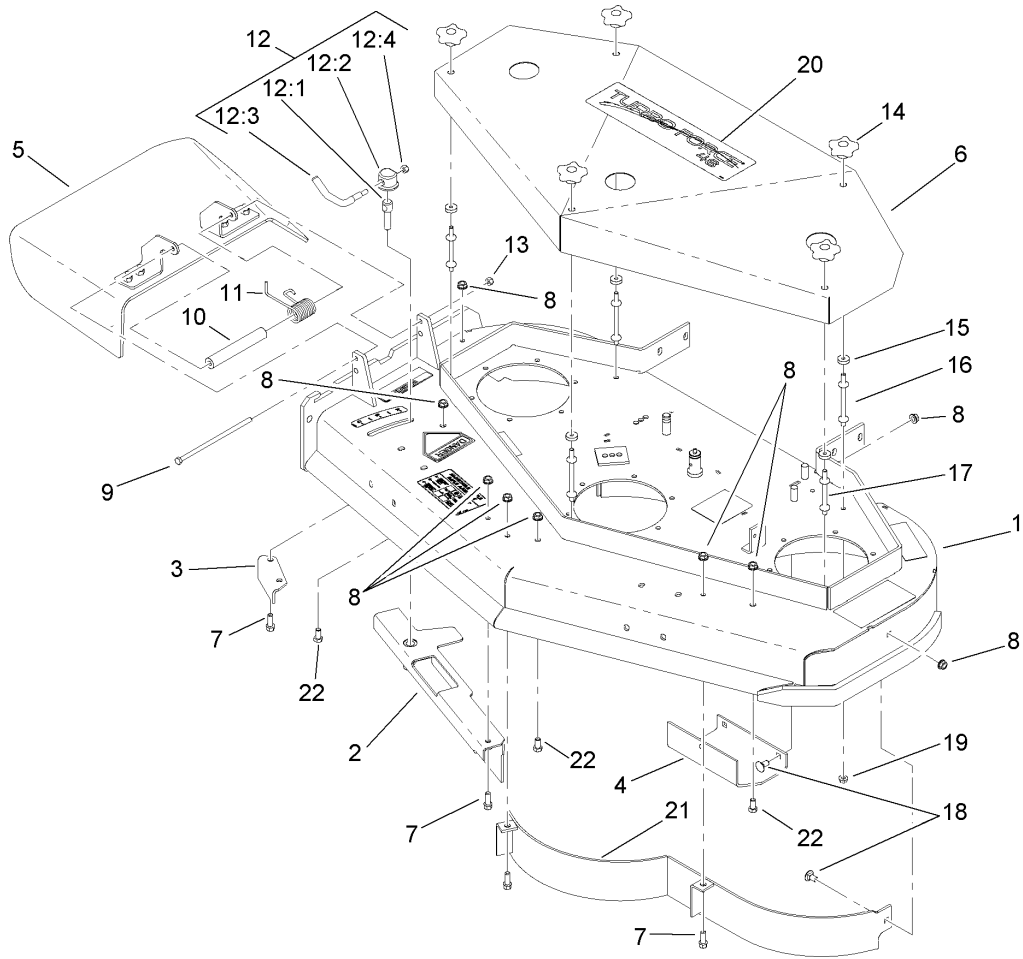
Ref	Part No.	Qty.	Description
1	110-6907	1	Hydro Handle ASM
2	29-5560	1	Switch-On / Off
2:1	218-461	1	Nut-HH
2:2	3254-5	1	Washer-Tooth
3	63-8360	1	Key-Ignition
4	1-323134	1	Knob-Push / Pull
5	3218-2	1	Nut-Jam
6	1-323143	1	Bearing-Nylon
7	106-5485	1	LH Operator Presence Control Lever ASM
8	1-803322	2	Screw-Set
9	1-303365	2	Bushing-Nylon
10	1-303363	1	Spring-Extension
11	106-2717-03	1	Rod-Control, Operator Presence
12	106-5486	1	RH Operator Presence Control Lever ASM
13	1-323142	1	Nut-Push
14	1-513592	1	Knob-Ball
15	1-633696	1	Throttle Cable ASM
16	1-807513	2	Bolt-CARR
17	3296-2	2	Nut-Lock, NI
18	1-323181	1	Linkage-Blade
19	1-806003	5	Pin-Cotter, Hair
21	103-0218	1	LH Drive Lever ASM

Ref	Part No.	Qty.	Description
21:2	1-413152	2	Sleeve-Bushing
22	103-0219	1	RH Drive Lever ASM
22:2	1-413152	2	Sleeve-Bushing
23	1-603749	2	Bushing-Lever, Drive
24	321-9	2	Screw-HH
25	1-613055	2	Pin-Clevis
26	3234-11	4	Screw-HHF
28	32128-21	4	Nut-HF
29	3296-42	2	Nut-Lock, NI
30	32128-33	4	Nut-HF
31	3256-2	2	Washer-Flat
32	1-303435	6	Washer-Spring
33	1-612167	1	LH Grip / Latch ASM
34	1-612168	1	RH Grip / Latch ASM
35	321-10	2	Screw-HH
36	104-7050	1	Housing-Manual
37	2412-120	2	R-Clamp
38	32104-76	2	Screw
39	1-303019	2	Grip-Latch
40	322-10	2	Screw-HH
41	1-603716	1	Washer-Friction
42	1-323244	2	Washer-Friction
43	1-603730	1	Plate-Lever, Shifter
44	106-2748	1	Lever-Shift



Upper Handle Assembly (continued)

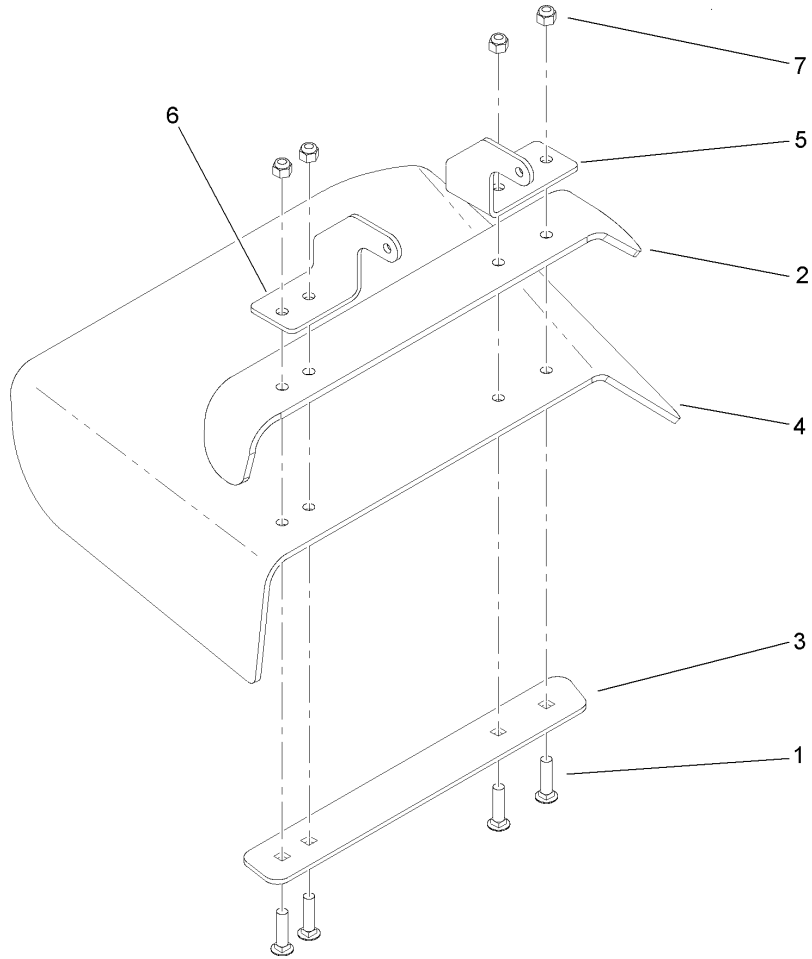
Ref	Part No.	Qty.	Description
45	1-603175	1	Knob-Ball
46	3296-29	2	Nut-Lock, NI
47	1-323245	2	Spring-Compression
48	3256-23	1	Washer-Flat
49	321-3	2	Screw-HH
50	1-323522	1	Rod-Control, Speed
51	3220-2	1	Nut-Jam
52	1-303105	1	Yoke-Adjustable
53	1-808280	1	Pin-Clevis
54	104-9838	2	Grip-Foam
55	104-7048	1	Cap-Housing
58	1-303287	3	Tie-Plastic
59	1-633181	1	Plate-Tapped
60	1-513051	1	Switch-Open, Normally
61	3256-14	2	Washer-Flat
62	3290-500	2	Screw-PPH
63	103-2007	1	Harness-Wiring



Deck Assembly

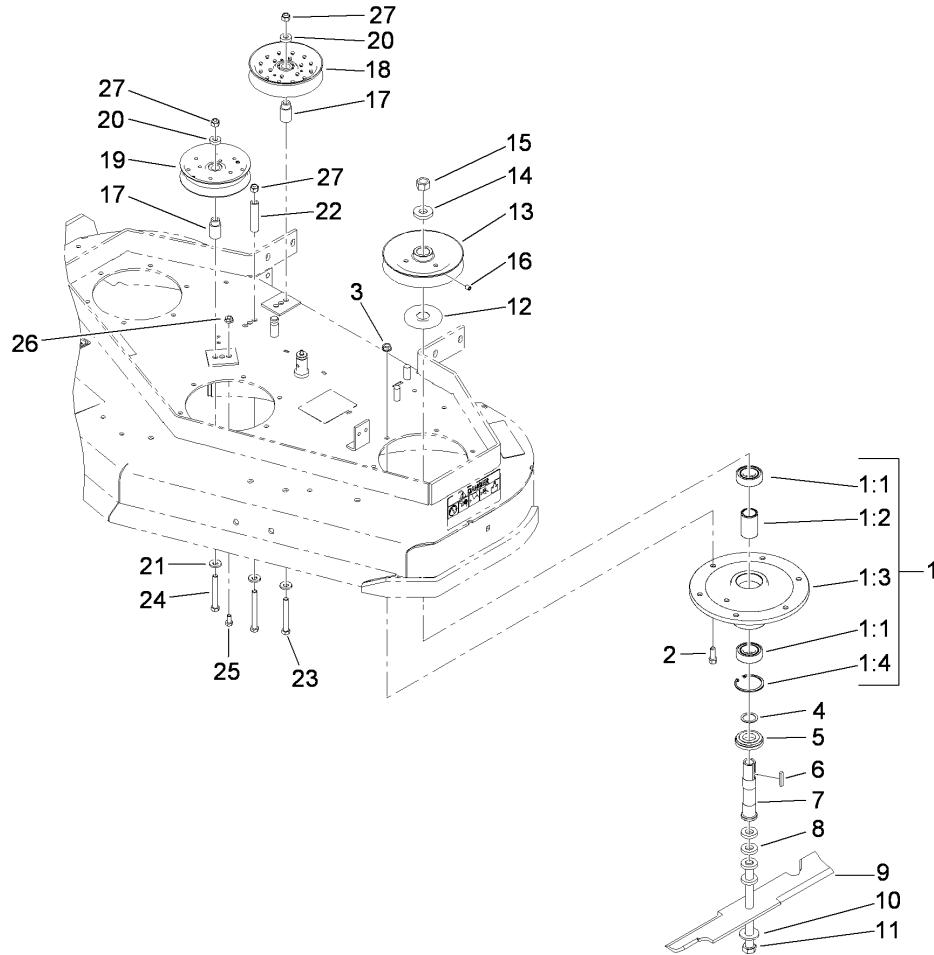
Ref	Part No.	Qty.	Description
1	110-4909	1	Deck ASM
2	110-0533-03	1	Baffle-Adjustable
3	110-0744-01	1	Baffle-Discharge
4	107-3166-01	1	Skid
5	110-0758	1	Deflector ASM
6	110-2119-01	1	Cover
7	92-1624	5	Screw-HWH
8	3290-357	12	Nut-HHF, Whiz
9	322-50	1	Screw-HH
10	105-4622	1	Spacer
11	104-8554	1	Spring-Torsion
12	107-1664	1	Lever ASM
12:1	106-3239	1	Screw-Lock
12:2	107-1644	1	Cap-Lock
12:3	106-3241	1	Lever-Lock
12:4	3296-29	1	Nut-Lock, NI
13	3296-29	1	Nut-Lock, NI
14	106-4161	5	Knob-Handle
15	1-323417	5	Washer
16	1-303536	3	Stud-Shield, Belt (Long)
17	1-303537	2	Stud-Shield, Belt (Short)
18	3231-1	7	Screw-CARR
19	32128-20	5	Nut-HF
20	112-9712	1	Decal

Ref	Part No.	Qty.	Description
21	110-0735-03	1	Baffle ASM
22	323-4	3	Screw-HH



Deflector Assembly No. 110-0758

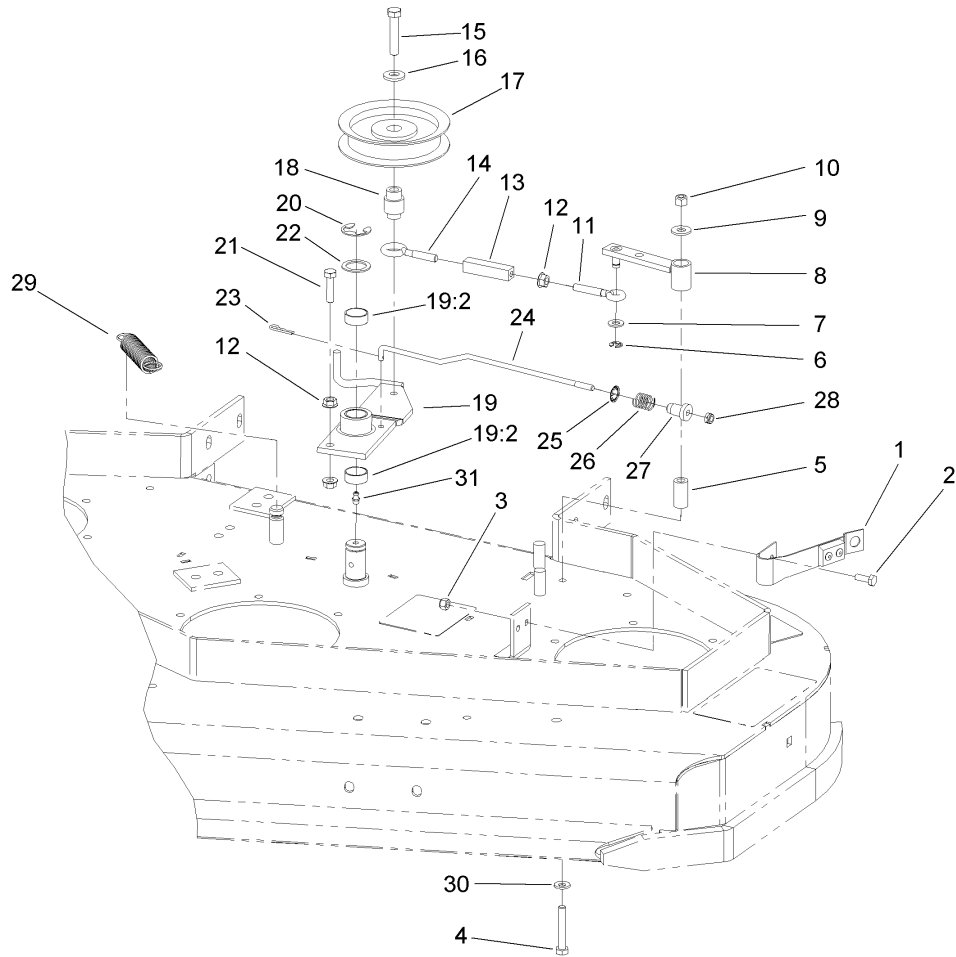
Ref	Part No.	Qty.	Description
1	3231-4	4	Screw-CARR
2	106-3246-01	1	Deflector
3	106-3248-03	1	Strap-Discharge
4	110-0759	1	Deflector-Rubber
5	107-4197-01	1	Bracket-Hinge, Rear
6	107-4196-01	1	Bracket-Hinge, Front
7	3296-39	4	Nut-Lock, NI



Sheave, Spindle and Blade Assembly

Ref	Part No.	Qty.	Description
1	108-6697	3	Spindle Housing ASM
1:1	110-2118	2	Bearing
1:2	110-2116	1	Spacer-Bearing
1:3	108-6694	1	Housing-Spindle
1:4	32120-8	1	Ring-Snap
2	92-1624	18	Screw-HWH
3	3290-357	18	Nut-HHF, Whiz
4	110-4888	3	Washer-Spacer
5	103-2535	3	Spacer-Guard, Bottom
6	1-807267	3	Key
7	1-323529	3	Tube-Spindle, Short
8	1-323539	12	Spacer
9	107-3192-03	3	Blade-16.5 Inch (High Flow)
10	1-513208	3	Washer-Spring
11	1-800861	3	Screw-Cap, HH
12	103-1330	3	Guard-Bearing, Top
13	1-403183	3	Sheave
14	1-323339	3	Washer-Retainer, Sheave
15	3219-6	3	Nut-Hex
16	1-803310	3	Screw-Set
17	1-413113	2	Bushing-Idler
18	1-403186	1	Idler-Pulley, Flat
19	1-613098	1	Pulley-Idler
20	5-0652	2	Spacer

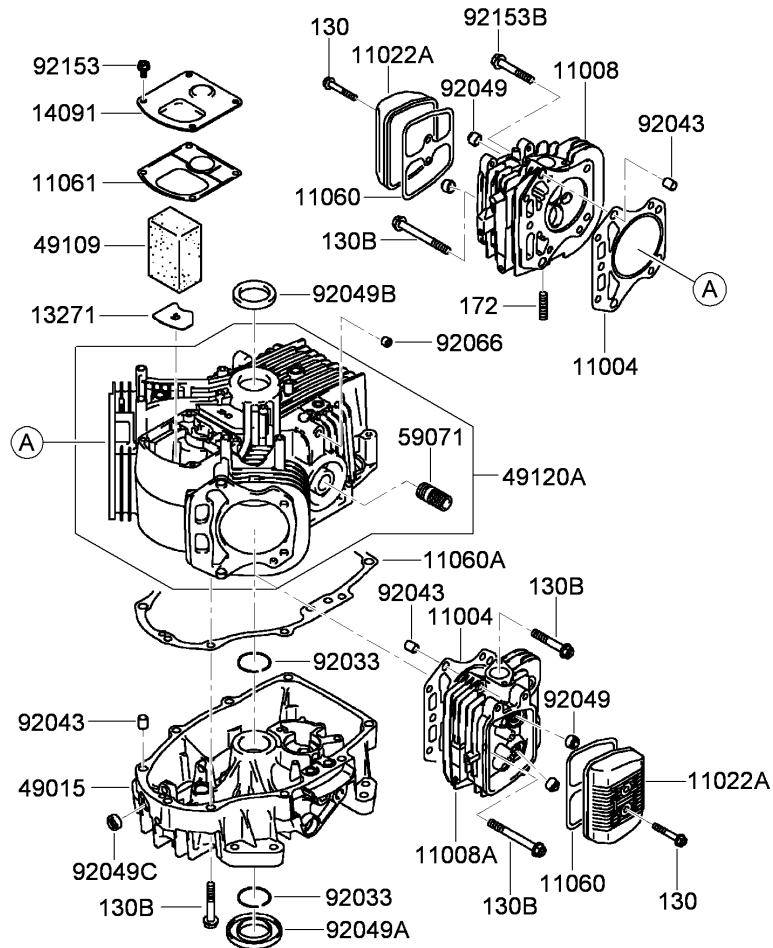
Ref	Part No.	Qty.	Description
21	98-5975	3	Washer-Belleville
22	1-403188	1	Spacer
23	323-15	1	Screw-HH
24	323-14	2	Screw-HH
25	322-2	1	Screw-HH
26	32128-20	1	Nut-HF
27	3296-39	3	Nut-Lock, NI



Idler Assembly

Ref	Part No.	Qty.	Description
1	1-324372	1	Pad And Spring ASM
2	321-4	2	Screw-HH
3	3296-42	2	Nut-Lock, NI
4	322-10	1	Screw-HH
5	1-403179	1	Tube-Pivot
6	32120-35	1	Ring-Retaining, EXT
7	3256-23	1	Washer-Flat
8	1-322235	1	Arm-Assist
9	3256-3	1	Washer-Flat
10	3296-29	1	Nut-Lock, NI
11	1-303238	1	Eyebolt-Thread, RH
12	32128-20	3	Nut-HF
13	1-303236	1	Body-Turnbuckle
14	1-303348	1	Eyebolt-Thread, LH
15	702809	1	Screw-Cap
16	98-5975	1	Washer-Belleville
17	1-603843	1	Pulley-Idler
18	1-303434	1	Bushing-Engagement
19	103-3600	1	Idler Arm ASM
19:2	1-323729	2	Sleeve-Bearing
20	32151-103	1	Ring-Retaining, EXT
21	322-6	1	Screw-HH
22	1-303352	1	Washer-Spindle
23	1-806003	1	Pin-Cotter, Hair

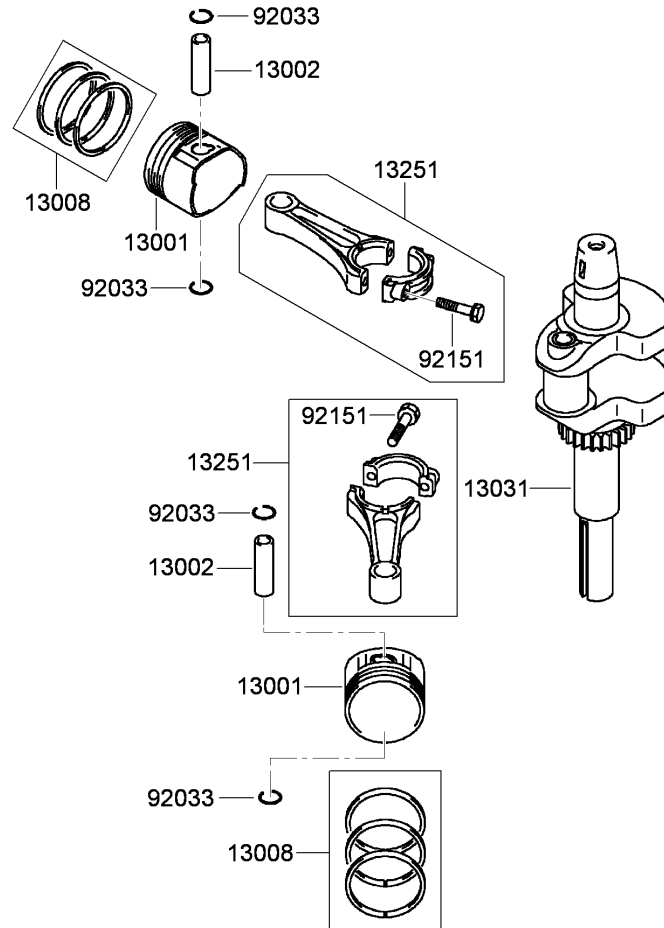
Ref	Part No.	Qty.	Description
24	110-4932	1	Rod-Brake
25	1-323748	1	Ring-Push On
26	1-323747	1	Spring-Compression
27	1-323746	1	Spacer-Flanged
28	3296-56	1	Nut-Lock, NI
29	1-323071	1	Spring-Extension
30	1-303334	1	Washer-Spring
31	302-19	1	Fitting-Grease



Cylinder and Crankcase Assembly Kawasaki FH541V-FS23

Ref	Part No.	Qty.	Description
● 130	130AA0640	4	Bolt-Flanged,6X40
● 130B	130CA0875	2	Bolt-Flanged (8X75)
● 172	172BA0818	4	Bolt-Stud (8X18)
● 11004	11004-7016	2	Gasket-Head
● 11008	11008-6043	1	Head-Cylinder, No. 1
● 11008A	11008-7020	1	Head-Cylinder, No. 2
● 11022A	11022-7018	2	Case-Rocker
● 11060	11060-7001	2	Gasket-Case, Rocker
● 11060A	11060-7008	1	Gasket-Cover, Crankcase
● 11061	11061-7001	1	Gasket-Breather
● 13271	13271-7016	1	Plate
● 14091	14091-7006	1	Cover
● 49015	49015-6253	1	Cover-Crankcase
● 49109	49109-7002	1	Element-Breather
● 49120A	49120-7113	1	Crankcase
● 59071	59071-2079	1	Joint
● 92033	92033-7003	2	Ring-Snap
● 92043	92043-7001	6	Pin
● 92049	92049-7001	4	Seal-Oil, R V C2 (6X11X10.2)
● 92049A	92049-7015	1	Seal-Oil, S D (35X62X8 L HSH)
● 92049B	92049-7016	1	Seal-Oil, S D (35X48X8 R HSH)
● 92049C	92049-7019	1	Seal-Oil, S O (8X14X5 HSH)
● 92066	92066-7026	1	Plug
● 92153	92153-7043	4	Bolt (6X12)

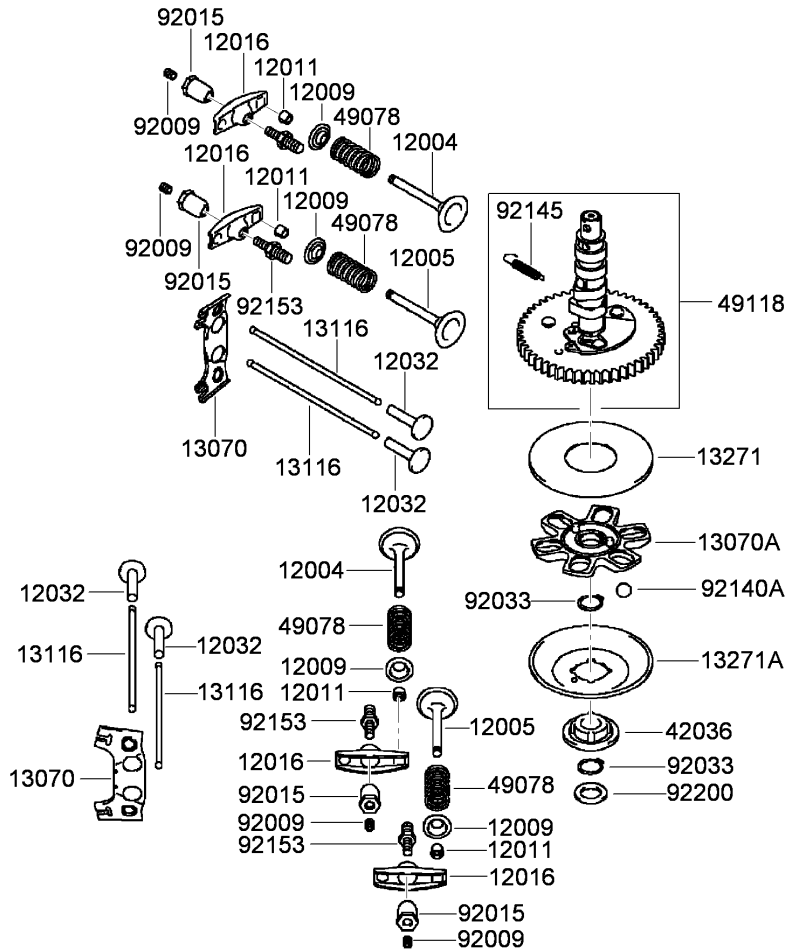
Ref	Part No.	Qty.	Description
● 92153B	92153-7054	17	Bolt (8X50)



Piston and Crankshaft Assembly Kawasaki FH541V-FS23

Ref	Part No.	Qty.	Description
⑤ 13001	13001-7010	2	Piston-Engine
⑤ 13002	13002-7001	2	Pin-Piston
⑤ 13008	13008-6060	2	Piston Ring Set
⑤ 13031	13031-7073	1	Crankshaft
⑤ 13251	13251-7010	2	Connecting Rod ASM
⑤ 92033	92033-7002	4	Ring-Snap
⑤ 92151	92151-7017	4	Bolt (6X35)

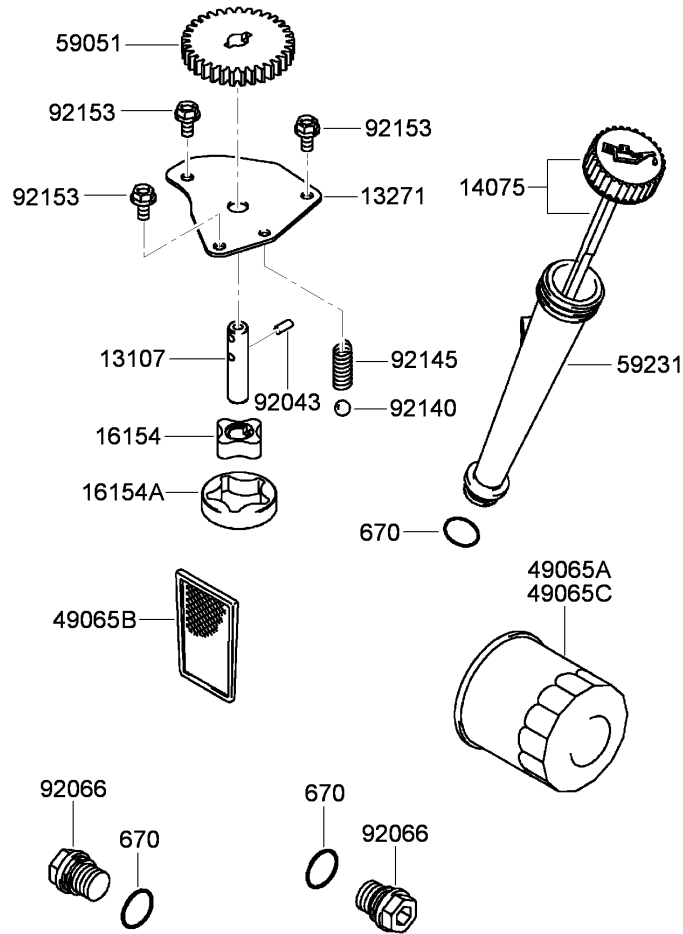
--	--	--	--



Valve and Camshaft Assembly Kawasaki FH541V-FS23

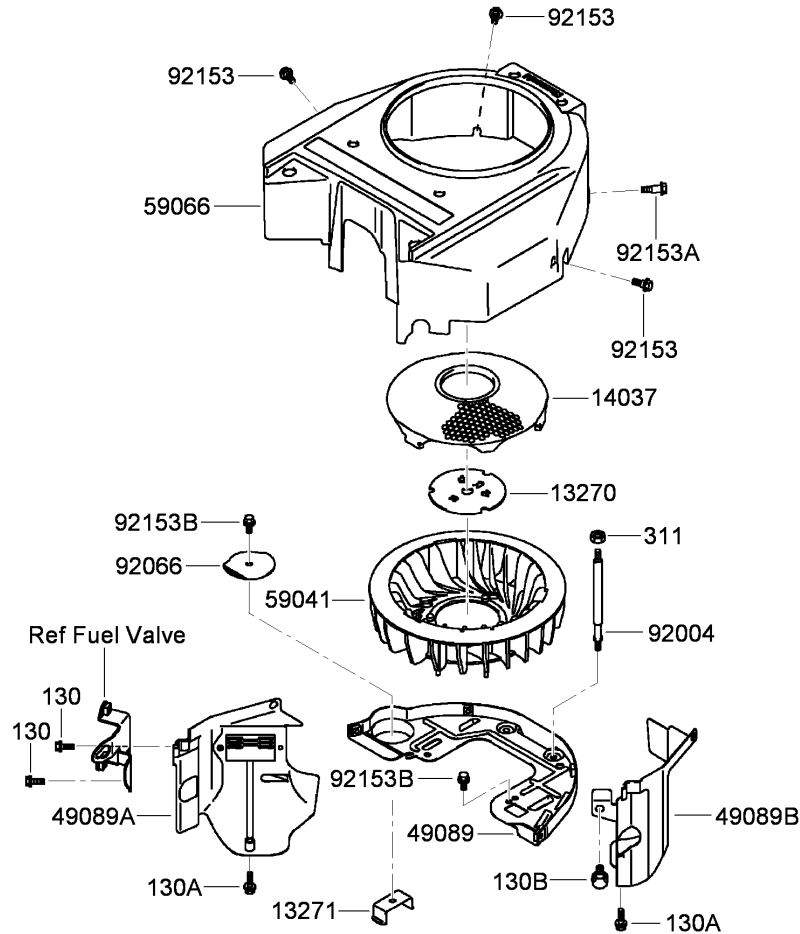
Ref	Part No.	Qty.	Description
③ 12004	12004-7003	2	Valve-Intake
③ 12005	12005-7003	2	Valve-Exhaust
③ 12009	12009-7001	4	Retainer-Spring, Valve
③ 12011	12011-2056	8	Collet
③ 12016	12016-7008	4	Arm-Rocker
③ 12032	12032-7001	4	Tappet
③ 13070	13070-7001	2	Guide
③ 13070A	13070-7004	1	Guide
③ 13116	13116-2057	4	Rod-Push
③ 13271	13271-7007	1	Plate
③ 13271A	13271-7021	1	Plate-Governor
③ 42036	42036-7010	1	Sleeve
③ 49078	49078-7001	4	Spring-Valve, Engine
③ 49118	49118-7004	1	Camshaft
③ 92009	92009-2341	4	Screw
③ 92015	92015-2253	4	Nut
③ 92033	92033-7001	2	Ring-Snap
③ 92140A	92140-7005	6	Ball
③ 92145	92145-7001	1	Spring
③ 92153	92153-7019	4	Bolt
③ 92200	92200-7001	1	Washer

--	--	--	--



Lubrication Equipment Assembly Kawasaki FH541V-FS23

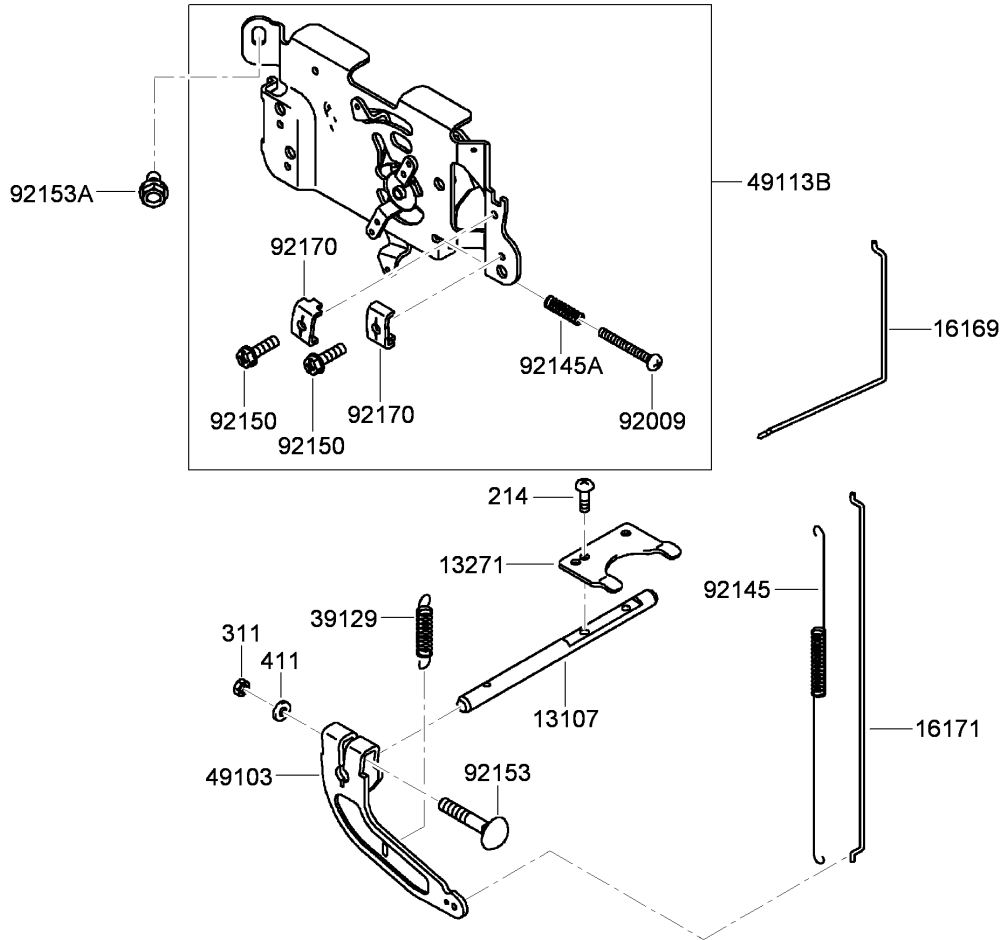
Ref	Part No.	Qty.	Description
③670	670D2016	3	O-Ring (16Mm)
③13107	13107-7009	1	Shaft
③13271	13271-7017	1	Plate
③14075	14075-7009	1	Cap ASM
③16154	16154-2053	1	Rotor-Pump (In)
③16154A	16154-2054	1	Rotor-Pump (Out)
③49065A	49065-2078	1	Filter-Oil (Part May Be Used As Substitute And Is Supplied Until The Stock Is Exhausted)
③49065B	49065-7004	1	Filter-Oil
③49065C	49065-7010	1	Filter-Oil
③59051	59051-7011	1	Gear-Spur
③59231	59231-7005	1	Filler
③92043	92043-7003	2	Pin
③92066	92066-7003	2	Plug
③92140	92140-7003	1	Ball
③92145	92145-7002	1	Spring
③92153	92153-7043	3	Bolt (6X12)



Cooling Equipment Assembly Kawasaki FH541V-FS23

Ref	Part No.	Qty.	Description
③ 130	130AA0616	2	Bolt-Flanged,6X16
③ 130A	130AA0625	2	Bolt-Flanged (6X25)
③ 130B	130AA0816	1	Bolt-Flanged (8X16)
③ 311	311AA0600	2	Nut-Hex (6Mm)
③ 13270	13270-7007	1	Plate
③ 13271	13271-7002	1	Plate
③ 14037	14037-7025-9H	1	Screen
③ 49089	49089-7032	1	Shroud-Engine
③ 49089A	49089-7042	1	Shroud-Engine
③ 49089B	49089-7043	1	Shroud-Engine
③ 59041	59041-7012	1	Fan
③ 59066	59066-7037	1	Housing-Fan
③ 92004	92004-7006	2	Stud
③ 92066	92066-7004	1	Plug
③ 92153	92153-7007	3	Bolt
③ 92153A	92153-7008	1	Bolt
③ 92153B	92153-7043	3	Bolt (6X12)

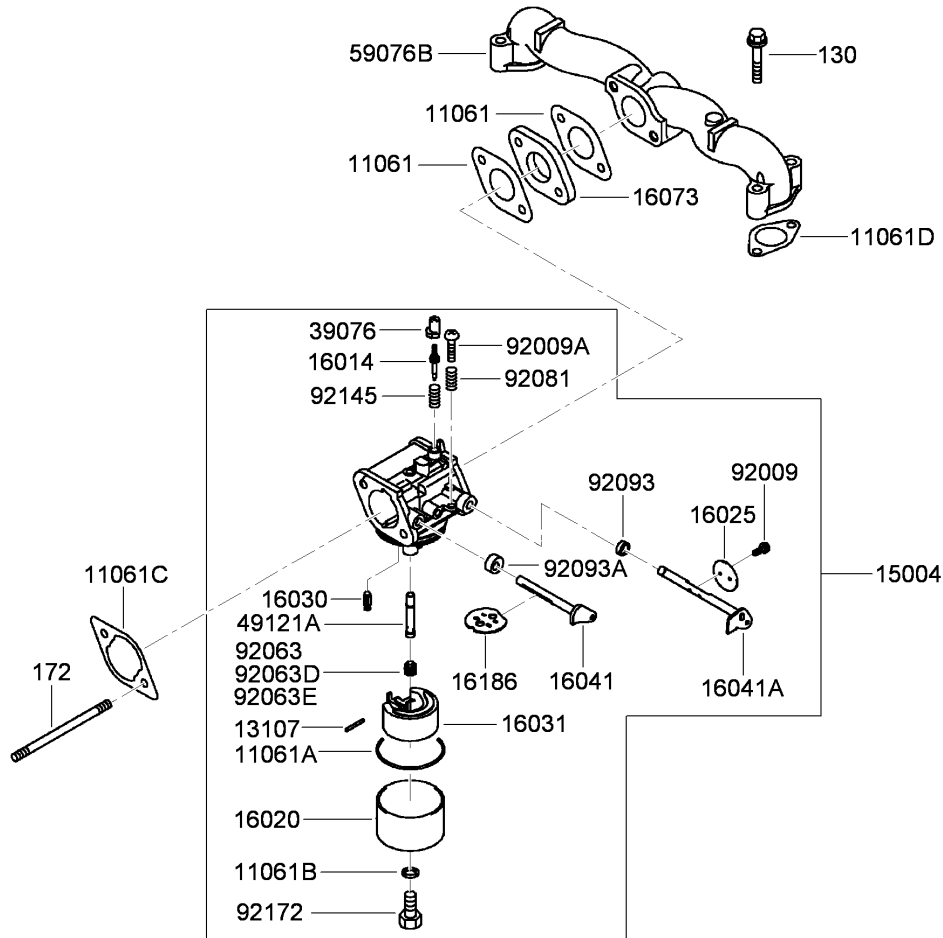
--	--	--	--



Control Equipment Assembly Kawasaki FH541V-FS23

Ref	Part No.	Qty.	Description
②214	214AA0408	2	Screw-Pan +--(4X8)
③311	311AA0600	1	Nut-Hex (6Mm)
④411	411AA0600	1	Washer-Plain (6Mm)
⑤13107	13107-7010	1	Shaft
⑥13271	13271-7032	1	Plate
⑦16169	16169-7010	1	Link-Choke
⑧16171	16171-7001	1	Link
⑨39129	39129-7003	1	Spring-Governor
⑩49103	49103-7004	1	Arm-Governor
⑪49113B	49113-7054	1	Control Panel ASM
⑫92009	92009-7007	1	Screw (4X35)
⑬92145	92145-7003	1	Spring
⑭92145A	92145-7005	1	Spring
⑮92150	92150-2182	2	Bolt (5X18)
⑯92153	92153-7033	1	Bolt (6X35)
⑰92153A	92153-7043	2	Bolt (6X12)
⑱92170	92170-7001	2	Clamp

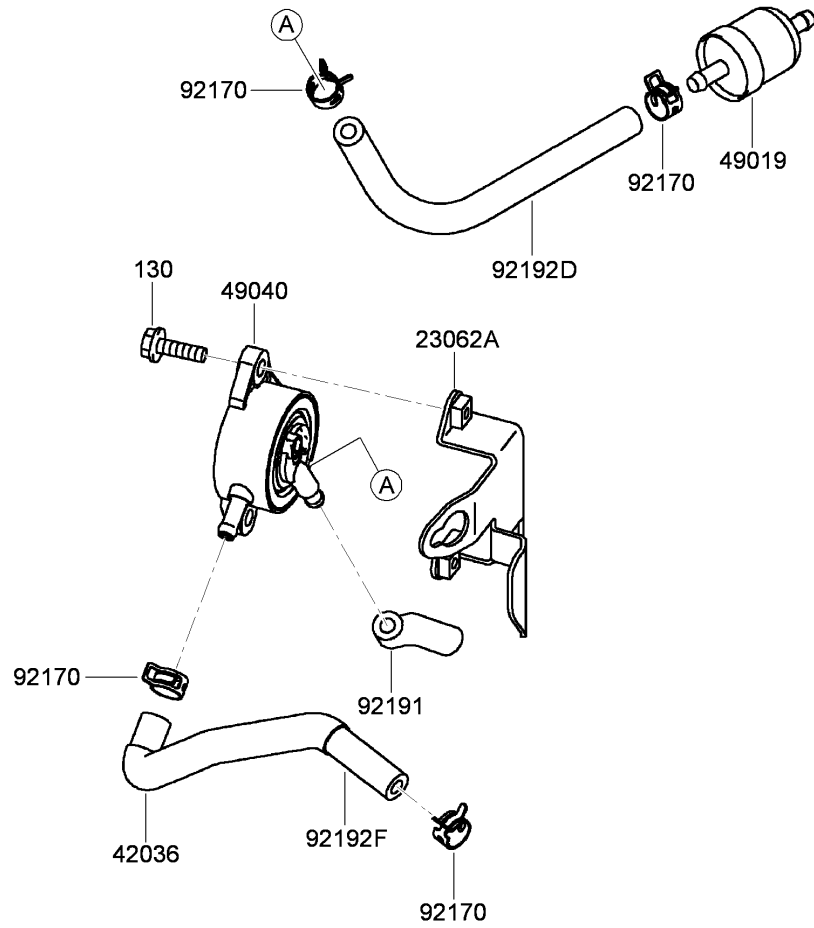
--	--	--	--	--



Carburetor Assembly Kawasaki FH541V-FS23

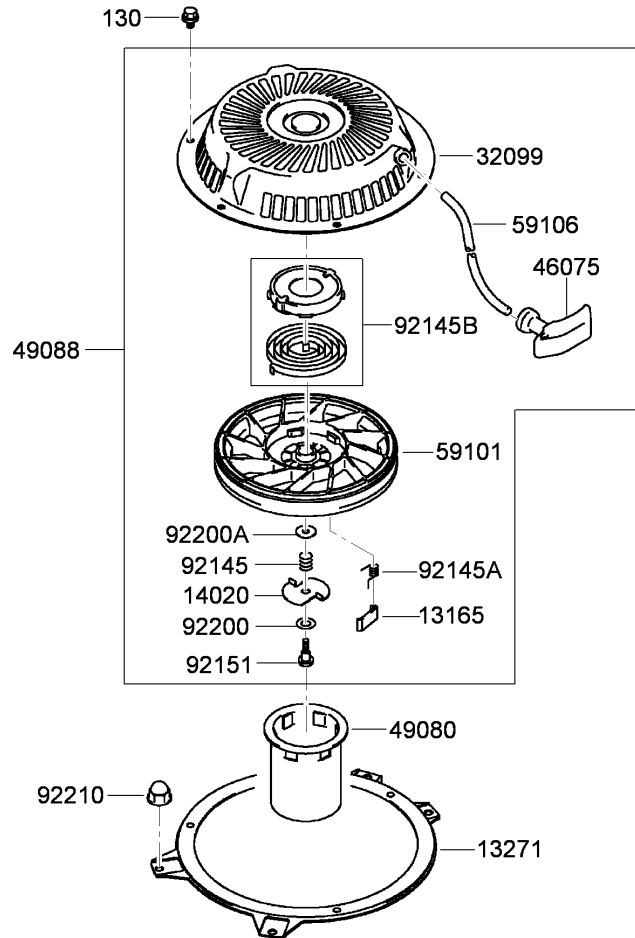
Ref	Part No.	Qty.	Description
③ 130	130AA0635	4	Bolt-Flanged (6X35)
③ 172	172BA0690	2	Bolt-Stud (6X90)
③ 11061	11061-7004	2	Gasket-Insulator
③ 11061A	11061-7009	1	Gasket-Chamber
③ 11061B	11061-7010	1	Gasket-Screw
③ 11061C	11061-7018	1	Gasket-Cleaner, Air
③ 11061D	11061-7019	2	Gasket
③ 13107	13107-7018	1	Shaft
③ 15004	15004-7057	1	Carburetor ASM
③ 16014	16014-7005	1	Screw-Air, Pilot
③ 16020	16020-7003	1	Chamber-Float
③ 16025	16025-7006	1	Valve-Throttle
③ 16030	16030-7003	1	Valve-Float
③ 16031	16031-7002	1	Float
③ 16041	16041-7016	1	Shaft-Choke, Carburetor
③ 16041A	16041-7018	1	Shaft-Throttle, Carburetor
③ 16073	16073-7007	1	Insulator
③ 16186	16186-7001	1	Choke Valve ASM
③ 39076	39076-7001	1	Limiter
③ 49121A	49121-7017	1	Nozzle-Main
③ 59076B	59076-7017	1	Manifold-Intake
③ 92009	92009-2083	2	Screw
③ 92009A	92009-2349	1	Screw
③ 92063	92063-7029	1	Jet-Main, No.82 (6560 Ft)

Ref	Part No.	Qty.	Description
③ 92063D	92063-7147	1	Jet-Main, No.86
③ 92063E	92063-7148	1	Jet-Main-No.84 (3280 Ft)
③ 92081	92081-2234	1	Spring
③ 92093	92093-2100	1	Seal
③ 92093A	92093-7003	1	Seal
③ 92145	92145-7015	1	Spring
③ 92172	92172-7002	1	Screw



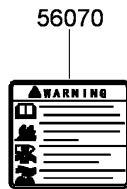
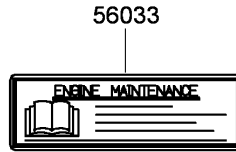
Fuel Tank and Valve Assembly Kawasaki FH541V-FS23

Ref	Part No.	Qty.	Description
① 130	130AA0620	2	Bolt-Flanged (6X20)
② 23062A	23062-7019-9H	1	Bracket
③ 42036	42036-7012	1	Sleeve
④ 49019	49019-7001	1	Filter-Fuel
⑤ 49040	49040-7001	1	Pump-Fuel
⑥ 92170	92170-2009	4	Clamp
⑦ 92191	92191-7002	1	Tube
⑧ 92192D	92192-7135	1	Tube (6.35X12.7X160)
⑨ 92192F	92192-7136	1	Tube (6.35X12.7X180)



Starter Assembly Kawasaki FH541V-FS23

Ref	Part No.	Qty.	Description				
130	130AA0608	3	Bolt-Flanged (6X8)				
13165	13165-7001	2	Pawl-Starter, Recoil				
13271	13271-7003-9H	1	Plate				
14020	14020-7001	1	Retainer				
32099	32099-7002	1	Case-Starter, Recoil				
46075	46075-7001	1	Grip-Starter, Recoil				
49080	49080-7001	1	Pulley-Starting				
49088	49088-7013	1	Starter-Recoil				
59101	59101-7001	1	Reel-Starter, Recoil				
59106	59106-7005	1	Rope				
92145	92145-7006	1	Spring				
92145A	92145-7007	2	Spring				
92145B	92145-7008	1	Spring				
92151	92151-7008	1	Bolt				
92200	92200-7004	1	Washer				
92200A	92200-7005	1	Washer				
92210	92210-0003	4	Nut				



Label Assembly Kawasaki FH541V-FS23

Ref	Part No.	Qty.	Description				
⑤56033	56033-7001	1	Label-Manual				
⑤56070	56070-7001	1	Label-Warning				
⑤56080	56080-2077	1	Label-Brand				
⑤56080B	56080-7056	1	Label-Brand				

Attachments and Accessories

For 30988 - Commercial Walk-Behind Mower, Fixed Deck Pistol Grip Hydro with 48in TURBO FORCE Cutting Unit

Product Name	Model/Part
Blade-Low Flow, 16.5 Inch	107-3193-03
Blade-Mid Flow, 16.5 Inch	107-3194-03
Blade-Atomic, 16.5 Inch	107-3195-03
Blade-Recycling, 16.5 Inch	107-3196-03
Bagging Enhancement Kit	108-4091
Blade-Hi Flow, 16.5 Inch (6 Pack)	110-0414
Blade-Lo Flow, 16.5 Inch (6 Pack)	110-0415
Blade-Recycler, 16.5 Inch (6 Pack)	110-0416
Blade-Atomic, 16.5 Inch (6 Pack)	110-0417
Blade-Mid Flow, 16.5 Inch (6 Pack)	110-0418
48 Inch Recycler Kit	110-2060
Operator-Controlled Discharge Chute Kit	115-4195
Soft Bag (3 Bushel)	30104
Sulky	30109

NOTES

NOTES

NOTES

