



# Commercial Walk-behind Mowers

All Commercial Floating and Fixed Deck Walk-behind Mowers

## Setup Instructions

### Loose Parts

Use the chart below to verify that all parts have been shipped.

Procedure	Description	Qty.	Use
<b>1</b>	No parts required	–	Unfold the crate.
<b>2</b>	No parts required	–	Check the tire pressure.
<b>3</b>	Number 2 general purpose lithium base or molybdenum base grease. (Purchase separately.)	1 tube	Check the idler arms for grease. (Floating Deck Models)
<b>4</b>	Number 2 general purpose lithium base or molybdenum base grease. (Purchase separately.)	1 tube	Check the mower belt idler arm for grease. (Fixed Deck Models)
<b>5</b>	No parts required	–	Prepare the grass deflector.
<b>6</b>	No parts required	–	Adjust the anti-scalp rollers. (Floating Deck Models)
<b>7</b>	No parts required	–	Check the engine oil level.
<b>8</b>	No parts required	–	Add fuel to the machine.
<b>9</b>	No parts required	–	Check the hydraulic oil level.
<b>10</b>	Bulk electrolyte with 1.265 specific gravity (Purchase from a battery supply outlet.)	80 ounces	Activate the battery for Mowers with Electric Start.
<b>11</b>	No parts required	–	Charge the battery for Mowers with Electric Start.
<b>12</b>	No parts required	–	Check the machine before delivery to the customer.
<b>13</b>	Operator's Manual Engine Owner's Manual Engine warranty literature Registration Card Operator training material Accessory brochure Key Oil drain hose	1 1 1 1 1 1 1 1	Delivering the machine to the customer.

# 1

## Unfolding the Crate

No Parts Required

### Procedure

If the machine is in a metal crate, refer to the Packaging Crate Instructions included with the machine.

# 2

## Checking the Tire Pressure

No Parts Required

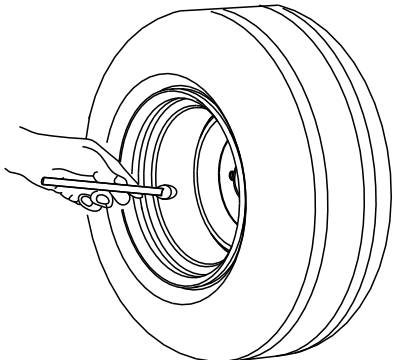
### Procedure

Pressure: 12 to 14 psi (83 to 97 kPa)

Pressure for 60 inch mowers: 14 to 16 psi (97 to 110 kPa)

**Note:** The front caster wheel is a semi-pneumatic tire and does not need to be checked.

Check the air pressure in the drive tires.



G001055

Figure 1

# 3

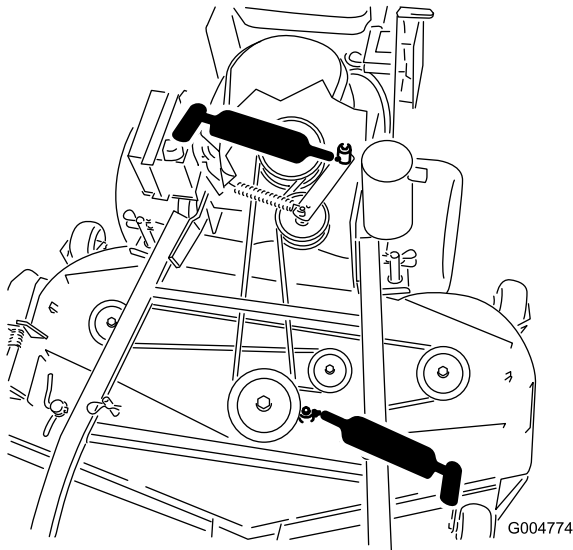
## Checking the Idler Arms for Grease (Floating Deck Models)

Parts needed for this procedure:

1 tube	Number 2 general purpose lithium base or molybdenum base grease. (Purchase separately.)
--------	---

### Procedure

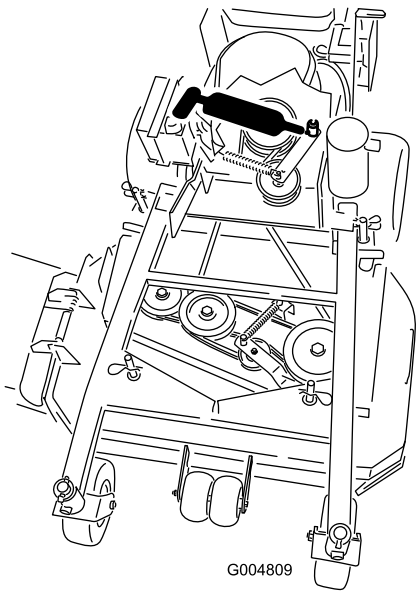
1. Remove the carrier frame cover.
2. Check the mower belt idler arm for grease (Figure 2 or Figure 3).
3. Install the carrier cover.



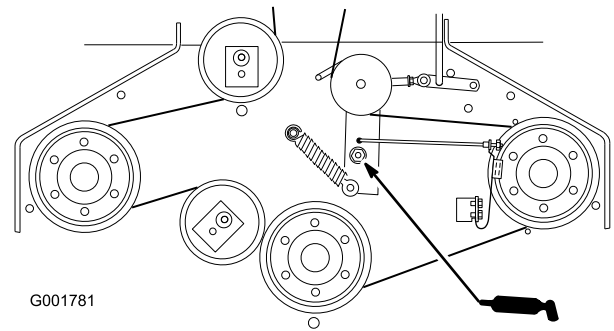
G004774

Figure 2

40 inch, 48 inch, and 52 inch Mower Deck shown



**Figure 3**  
36 inch Mower Deck shown



**Figure 4**

- Under the engine deck, check the PTO drive belt idler arm for grease.

# 4

## Checking the Mower Belt Idler Arm for Grease (Fixed Deck Models)

### Parts needed for this procedure:

1 tube	Number 2 general purpose lithium base or molybdenum base grease. (Purchase separately.)
--------	---

### Procedure

- Remove the mower deck cover.
- Check the mower belt idler arm for grease (Figure 4).
- Install the mower deck cover.

# 5

## Preparing the Grass Deflector

### No Parts Required

### Procedure

Check if your machine has the grass deflector spring installed correctly. The grass deflector needs to have downward tension.

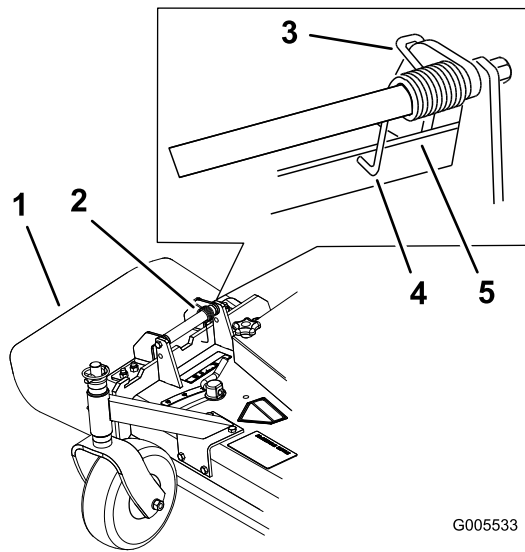


An uncovered discharge opening could allow the lawn mower to throw objects in the operator's or bystander's direction and result in serious injury or death. Also, contact with the blade could occur.

Never operate the lawn mower with the grass deflector removed unless you install a cover plate, a mulch plate, or a grass chute and catcher.

- Make sure the **L** end of spring is installed behind the deck edge before installing the bolt as shown in Figure 5.
- Place the **J** hook end of spring around grass deflector (Figure 5).

**Important:** The grass deflector must be free to rotate with downward tension. Lift the deflector up to the full open position and ensure that it rotates freely without binding into the full down position.



G005533

**Figure 5**  
Fixed Deck Shown

- |                         |   |
|-------------------------|---|
| 1. Grass Deflector      | 4. L end of spring, place behind deck edge before installing bolt |
| 2. Spring               | 5. Deck edge  |
| 3. J hook end of spring |   |

# 8

## Adding Fuel to the Machine

**No Parts Required**

### Procedure

Add gasoline to the machine before starting it. Refer to your *Operator's Manual*. for the correct fuel and procedure.

# 9

## Checking the Hydraulic Oil Level for Mowers with Hydro Drive

**No Parts Required**

### Procedure

Before you start the engine and use the machine, check the hydraulic oil level in the tank; refer to Checking the Hydraulic Oil Level in the *Operator's Manual*.

# 6

## Adjusting the Anti-Scalp Rollers (Floating Deck Models)

**No Parts Required**

### Procedure

Adjust the anti-scalp rollers; refer to Adjusting the Anti-Scalp Rollers in the *Operator's Manual*.

# 7

## Checking the Engine Oil Level

**No Parts Required**

### Procedure

Before you start the engine and use the machine, check the oil level in the engine crankcase; refer to Checking the Engine Oil Level in the *Operator's Manual*.

# 10

## Activating the Battery for Mowers with Electric Start

### Parts needed for this procedure:

80 ounces	Bulk electrolyte with 1.265 specific gravity (Purchase from a battery supply outlet.)
-----------	---

### Procedure

#### Warning

##### CALIFORNIA Proposition 65 Warning

Battery posts, terminals, and related accessories contain lead and lead compounds, chemicals known to the State of California to cause cancer and reproductive harm. Wash hands after handling.



Battery electrolyte contains sulfuric acid which is a deadly poison and causes severe burns.

Do not drink electrolyte and avoid contact with skin, eyes or clothing. Wear safety glasses to shield your eyes and rubber gloves to protect your hands.

Fill the battery where clean water is always available for flushing the skin.

Follow all instructions and comply with all safety messages on the electrolyte container.

1. Remove the battery from the machine. Refer to the *Operator's Manual* for instructions.

**Important:** Never fill the battery with electrolyte while the battery is installed on the machine. Electrolyte can be spilled on other parts and cause corrosion.

2. Clean the top of the battery and remove the vent caps (Figure 8).

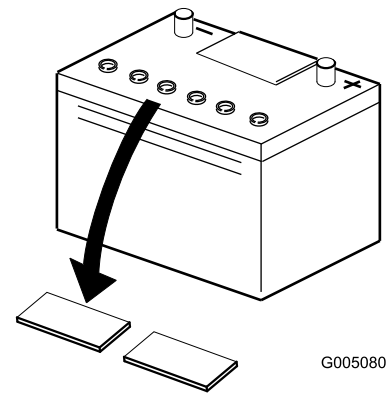


Figure 6

G005080

3. Slowly pour electrolyte into each battery cell until the level is up to the **upper** line on the battery case.

**Important:** Do not overfill the battery because electrolyte (sulfuric acid) can cause severe corrosion and damage to the chassis.

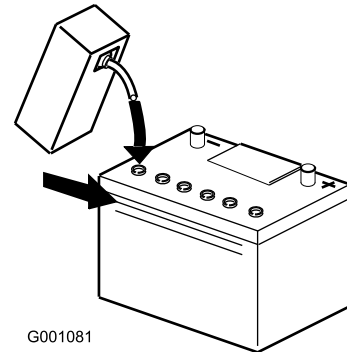


Figure 7

G001081

4. Wait five to ten minutes after filling the battery cells. Add electrolyte, if necessary, until the electrolyte level is up to the **upper** line on the battery case.
5. Install the battery vent caps (Figure 8).

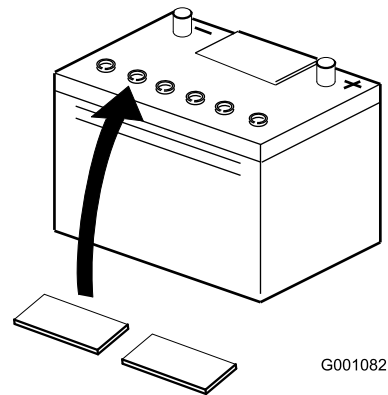


Figure 8

G001082


1. Fill caps
2. Upper line
3. Lower line

# 11

## Charging the Battery for Mowers with Electric Start

No Parts Required

### Procedure



Charging the battery produces gasses that can explode and cause serious injury.

- Keep cigarettes, sparks and flames away from the battery.
- Make sure the ignition switch is off.
- Ventilate when charging or using the battery in an enclosed space.

**Important:** Do not run the machine with the battery disconnected; electrical damage may occur to the engine.

Charge the battery. Refer to the *Operator's Manual* for instructions.

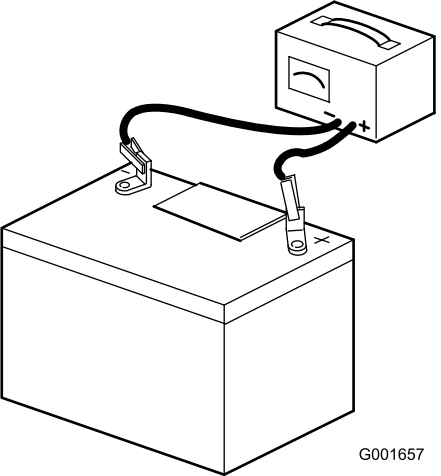


Figure 9

G001657

# 12

## Checking the Machine Before Delivery to the Customer

No Parts Required

### Procedure

Before delivering the machine to the customer, ensure that you perform or have performed the procedures listed in the following table and initial each when finished. Refer to the *Operator's Manual* for instructions on performing these procedures.

Initial	Check Procedure
	Check the tire pressure.
	Check the level of the mower.
	Check the engine oil level.
	For hydraulic driven mowers, check the hydraulic fluid level.
	Check the adjustment of the parking brake.
	Ensure that the machine tracks correctly; refer to the <i>Operator's Manual</i> for the adjustment procedure.
	Check the safety interlock system; refer to the <i>Operator's Manual</i> .
	Ensure that the PTO works.
	Check all fasteners you installed to ensure that they are tight.

When you finish setting up the machine, sign and date in the space provided below:

Signature: \_\_\_\_\_ Date: \_\_\_\_\_

# 13

## Delivering the Machine to the Customer

### Parts needed for this procedure:

1	<i>Operator's Manual</i>
1	<i>Engine Owner's Manual</i>
1	Engine warranty literature
1	Registration Card
1	Operator training material
1	Accessory brochure
1	Key
1	Oil drain hose

### Procedure

At delivery, Fill in the model and serial number and complete the items listed in the following table and initial each when finished.

**Model No.** \_\_\_\_\_ **Serial No.** \_\_\_\_\_

Dealer Initial	Customer Initial	Check Procedure
		Show the customer where the following features are located and how they function: <ul style="list-style-type: none"> <li>• Fuel tank cap</li> <li>• Oil fill cap/Oil dipstick</li> <li>• Spark plug(s)</li> <li>• Engine oil filter</li> <li>• Engine oil drain</li> <li>• Fuel filter</li> <li>• Air filter</li> <li>• Hydraulic fluid reservoir (if applicable)</li> <li>• Hydraulic filter (if applicable)</li> <li>• Hydraulic bypass valves (if applicable)</li> <li>• Battery (if applicable)</li> <li>• Ignition switch</li> <li>• Throttle lever</li> <li>• Choke lever</li> <li>• Power take off switch (PTO)</li> <li>• Motion controls</li> <li>• Parking brake</li> <li>• Mower height-of-cut</li> <li>• Mower deck flow baffle</li> </ul>
		Refer to the <i>Operator's Manual</i> to point out safety procedures, operation, and maintenance procedures.
		Review the warranty statement as shown in the <i>Operator's Manual</i> .
		Describe the post sale service procedures for your store.
		Assist the customer in filling out and mailing the registration card or register online at <a href="http://www.Toro.com">www.Toro.com</a>
		Make sure that the customer receives the <i>Operator's Manual</i> , <i>Engine Owner's Manual</i> , <i>Set Up Instructions</i> , and operator training material.
		Make sure the customer knows the <i>Parts Catalog</i> is available at <a href="http://www.Toro.com">www.Toro.com</a> .
		Assist the customer in loading the mower.

**Note:** When you, the dealer representative, have finished delivering the machine to the customer, sign and date in the space provide below and keep a copy of this page for dealer records.

**Signature:** \_\_\_\_\_ **Date:** \_\_\_\_\_

**Signature:** \_\_\_\_\_ **Date:** \_\_\_\_\_