



## 1/3 Area Platform Lift Workman® Heavy-Duty Utility Vehicle

Model No. 07344 - 290000001 and up.

### Parts Catalog

---

#### **Ordering Replacement Parts**

To order replacement parts, please supply the part number, the quantity, and the description of each part desired.

#### **Understanding Reference Numbers**

Each identified part in an illustration has a reference number. The reference number for a part also appears in the parts list, along with other information about the part.

This catalog uses two special reference number formats, one to indicate parts in a service assembly and another to indicate the quantity of a given part in an illustration.

#### **Service Assembly Reference Numbers**

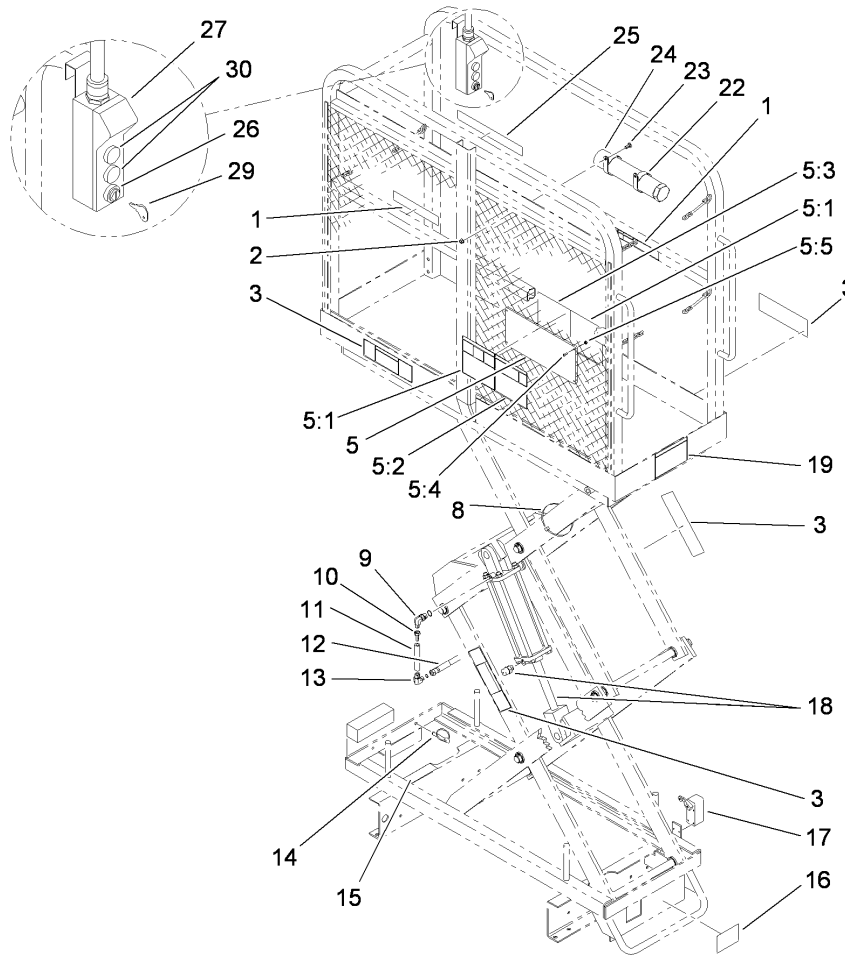
Parts in service assemblies have reference numbers in the form a:b. The a represents the reference number of the entire service assembly and the b represents a sequential number unique to each part within the service assembly.

For example, a wheel assembly might be identified by reference number 6, the tire by 6:1, the valve by 6:2, and the wheel by 6:3. When you order the assembly identified by reference number 6, you receive all parts identified by reference numbers 6:1, 6:2, and 6:3. However, you may also order any part individually. Reference numbers of this type appear in illustrations and in part lists.

#### **Reference Numbers Indicating Quantity**

In an illustration, if a reference number indicates more than one part, the reference number has the form nX y. The n represents the quantity of the part, the X is the multiplication symbol, and the y represents the reference number.

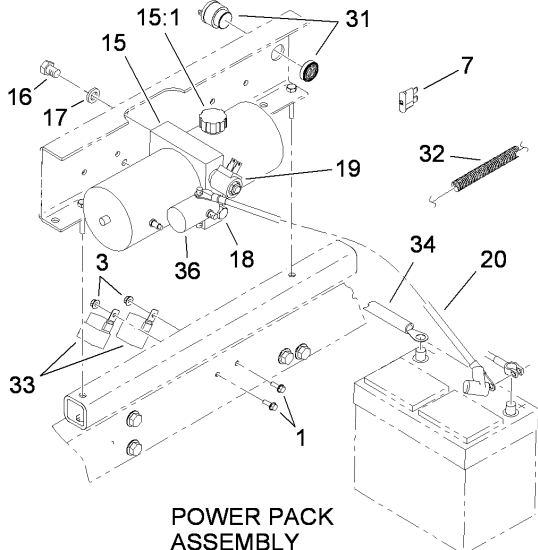
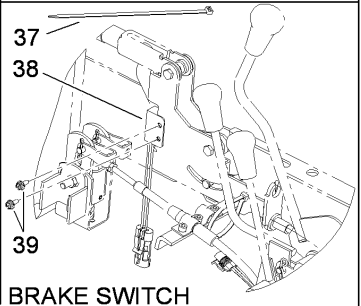
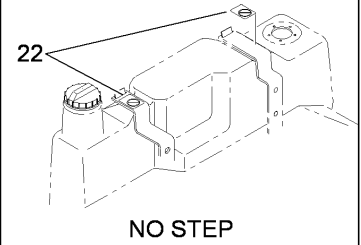
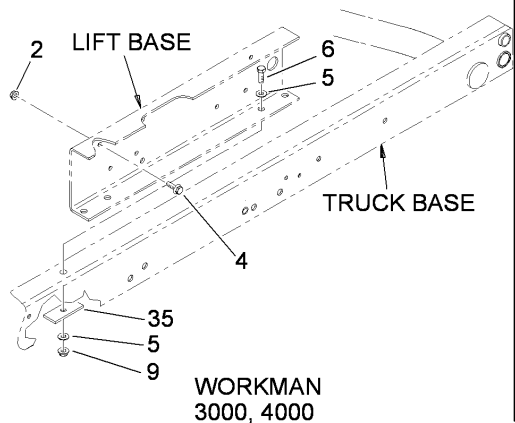
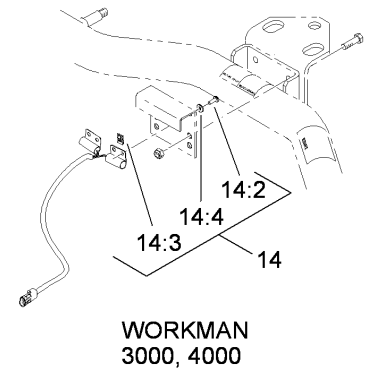
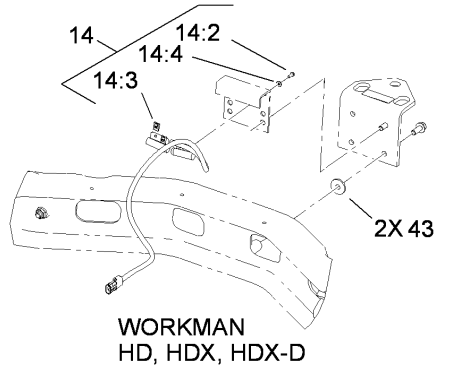
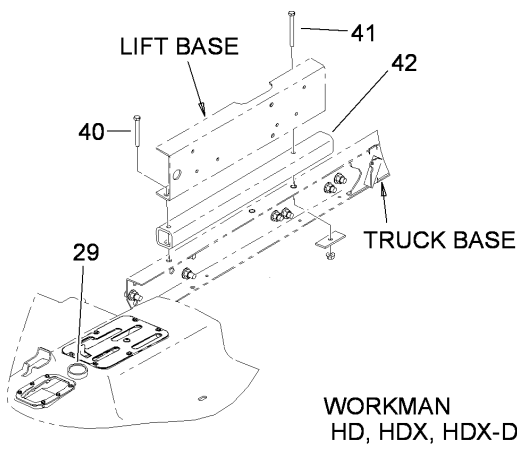
For example, in an illustration, the reference number 2X 37 means that two of the parts identified by reference number 37 are indicated.



## Deck, Arm and Hydraulic Cylinder Assembly

Ref	Part No.	Qty.	Description
1	93-3707	2	Decal-Danger
2	32128-20	2	Nut-HF
3	93-3706	4	Decal-Danger
5	93-3738	1	Plate-Decal
5:1	93-3702	2	Decal-Danger
5:2	93-3703	1	Decal-Danger
5:3	93-3704	1	Decal-Danger
5:4	3250-12	4	Screw-PPH
5:5	3296-2	4	Nut-Lock NI
8	250-5	12	Tie-Cable, Long
9	93-3749	1	Fitting-Adaptor
10	93-3747	1	Fitting-Reducer
11	93-3733	1	Control-Flow, Fixed
12	93-3735	1	HYD Hose ASM
13	93-3746	2	Fitting-Adaptor
14	93-3736	1	Pin-Release, Quick
15	93-3708	1	Decal-Danger
16	93-3711	1	Decal-Important
17	93-3713	1	Switch-Limit
18	93-3734	1	HYD Cylinder ASM
19	93-3701	1	Decal-Danger
22	2412-133	2	R-Clamp
23	3230-18	2	Screw-CARR
24	74-0720	1	Tube-Manual

Ref	Part No.	Qty.	Description
25	93-3705	1	Decal-Danger
26	117-4857	1	Switch-Key
27	93-3712	1	Control-Button, Push
29	94-5506	1	Key
30	117-4858	2	Switch-Pushbutton



## Lift Base, Power Pack, Leveling Switch and Brake Switch Assembly

Ref	Part No.	Qty.	Description
1	3234-4	2	Screw-HHF
2	32128-35	4	Nut-HF
3	32128-33	2	Nut-HF
4	3234-29	4	Screw-HHF
5	3253-5	4	Washer-Lock
6	323-6	4	Screw-HH
7	218-578	1	Fuse-10 Amp
9	32128-29	4	Locknut-Flange
14	112-3359	1	Leveling Switch Kit
14:2	3250-26	4	Screw-PPH
14:3	95-4115	4	Nut-Speed
14:4	3256-21	4	Washer-Flat
15	93-3732	1	Unit-Power, Dc (HYD)
15:1	98-2954	1	Cap-Reservoir
16	323-3	2	Screw-HH
17	3253-5	2	Washer-Lock
18	93-3748	1	Fitting-Adaptor
19	92-9144	1	Valve-Solenoid
20	93-3725	1	Cable-Battery
22	93-3709	2	Decal-No Step
29	93-3726	1	Level-Circular
31	93-3715	1	Sonalert-Intermittent
32	117-5604	1	Harness-Wire
33	99-7430	2	Relay

Ref	Part No.	Qty.	Description
34	93-3745	1	Cable-Battery, Negative
35	93-3742	2	Plate-Reinforcement
36	94-2864	1	Start Switch Relay Kit
37	250-5	2	Tie-Cable, Long
38	104-1414	1	Sensor-Proximity, Ferrous
39	32104-60	2	Screw-HWH
40	323-14	2	Screw-HH
41	323-15	2	Screw-HH
42	92-2719	2	Tube-Spacer
43	2844	2	Washer

