



## Z Stand<sup>®</sup> Kit Z Master<sup>®</sup> G3 Riding Mower with 72-in Deck

Model No. 117-0354

### Parts Catalog

---

#### Ordering Replacement Parts

To order replacement parts, please supply the part number, the quantity, and the description of each part desired.

#### Understanding Reference Numbers

Each identified part in an illustration has a reference number. The reference number for a part also appears in the parts list, along with other information about the part.

This catalog uses two special reference number formats, one to indicate parts in a service assembly and another to indicate the quantity of a given part in an illustration.

#### Service Assembly Reference Numbers

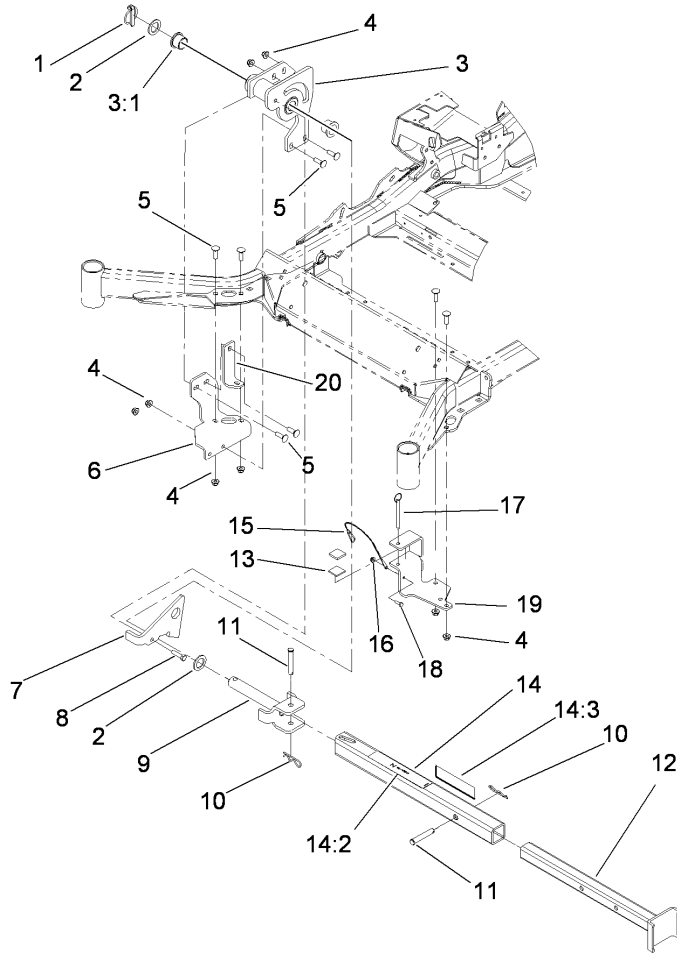
Parts in service assemblies have reference numbers in the form a:b. The a represents the reference number of the entire service assembly and the b represents a sequential number unique to each part within the service assembly.

For example, a wheel assembly might be identified by reference number 6, the tire by 6:1, the valve by 6:2, and the wheel by 6:3. When you order the assembly identified by reference number 6, you receive all parts identified by reference numbers 6:1, 6:2, and 6:3. However, you may also order any part individually. Reference numbers of this type appear in illustrations and in part lists.

#### Reference Numbers Indicating Quantity

In an illustration, if a reference number indicates more than one part, the reference number has the form nX y. The n represents the quantity of the part, the X is the multiplication symbol, and the y represents the reference number.

For example, in an illustration, the reference number 2X 37 means that two of the parts identified by reference number 37 are indicated.



## Z Stand Kit No. 117-0354

Ref	Part No.	Qty.	Description				
1	283-71	1	Pin-Lynch				
2	3-6781	2	Washer-Thrust				
3	117-0353	1	Z Stand Pivot ASM				
3:1	94-1291	2	Bushing				
4	104-8301	9	Nut-Flange, NI				
5	3231-25	8	Screw-CARR				
6	117-0351-01	1	Bracket-Z Stand, Pivot Mount				
7	100-9686-01	1	Bracket-Latch				
8	323-8	1	Screw-HH				
9	100-9692-01	1	Pivot Pin ASM				
10	3290-355	2	Pin-Hair				
11	283-55	2	Pin-Clevis				
12	115-3631-01	1	Inner Tube ASM				
13	115-3613	2	Cushion Rubber				
14	117-0360	1	Outer Tube ASM				
14:2	106-7464	1	Decal-Z Stand				
14:3	107-3969	1	Decal-Warning				
15	100-9385	1	Lanyard-Nylon				
16	104-7201	1	Nut-HF				
17	105-1647	1	Pin-Hitch, Cotterless				
18	321-4	1	Screw-HH				
19	115-3625-01	1	Zstand Cradle ASM				
20	117-0398-01	1	Bracket-Support				