



High-Speed Trencher Head Compact Utility Loaders

Model No. 22474 - 290000001 and up.

Parts Catalog

Ordering Replacement Parts

To order replacement parts, please supply the part number, the quantity, and the description of each part desired.

Understanding Reference Numbers

Each Identified part in an illustration has a reference number. The reference number for a part also appears in the parts list, along with other information about the part.

This catalog uses two special reference number formats, one to indicate parts in a service assembly and another to indicate the quantity of a given part in an illustration.

Service Assembly Reference Numbers

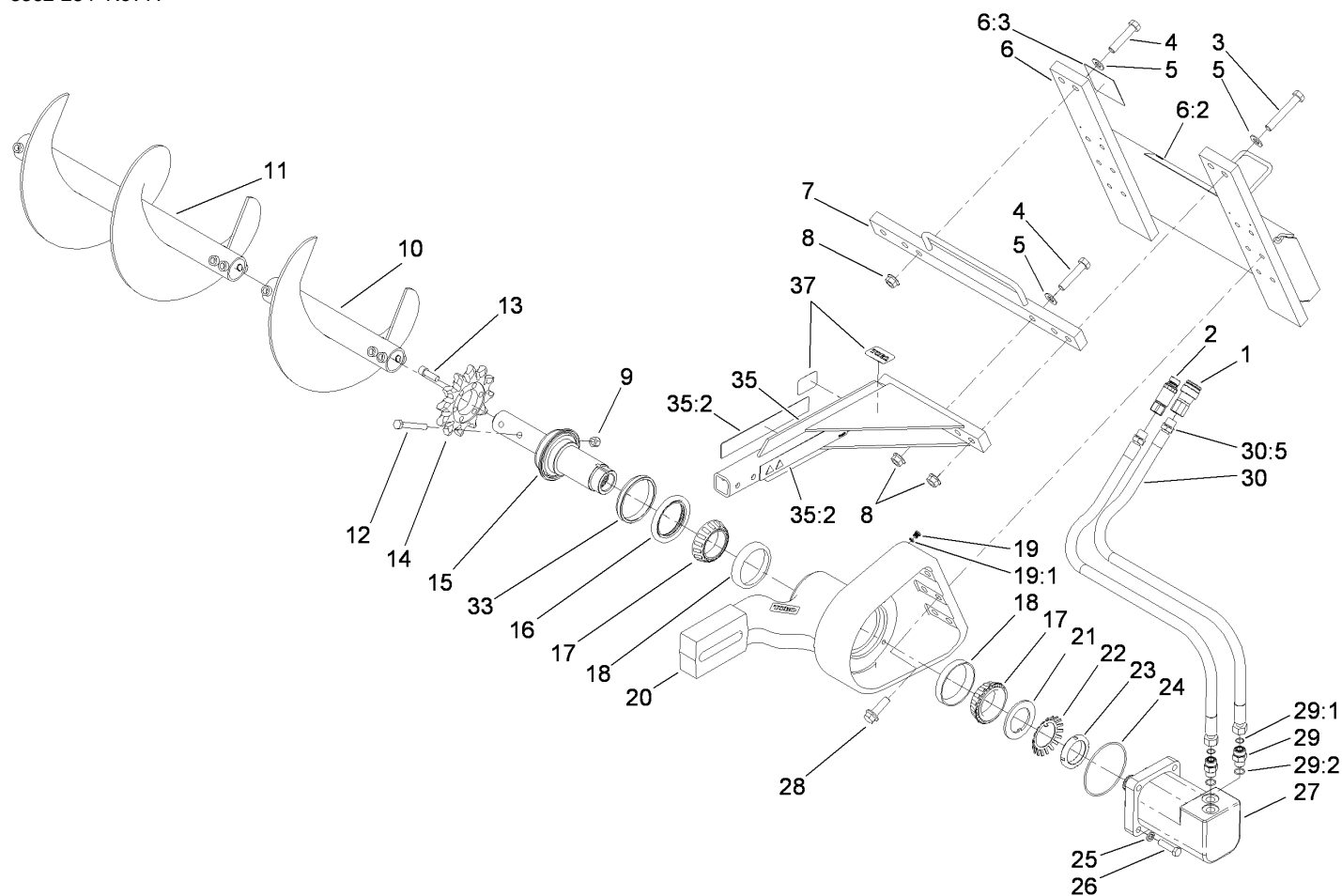
Parts in service assemblies have reference numbers in the form a:b. The a represents the reference number of the entire service assembly and the b represents a sequential number unique to each part within the service assembly.

For example, a wheel assembly might be identified by reference number 6, the tire by 6:1, the valve by 6:2, and the wheel by 6:3. When you order the assembly identified by reference number 6, you receive all parts identified by reference numbers 6:1, 6:2, and 6:3. However, you may also order any part individually. Reference numbers of this type appear in illustrations and in part lists.

Reference Numbers Indicating Quantity

In an illustration, if a reference number indicates more than one part, the reference number has the form nX y. The n represents the quantity of the part, the X is the multiplication symbol, and the y represents the reference number.

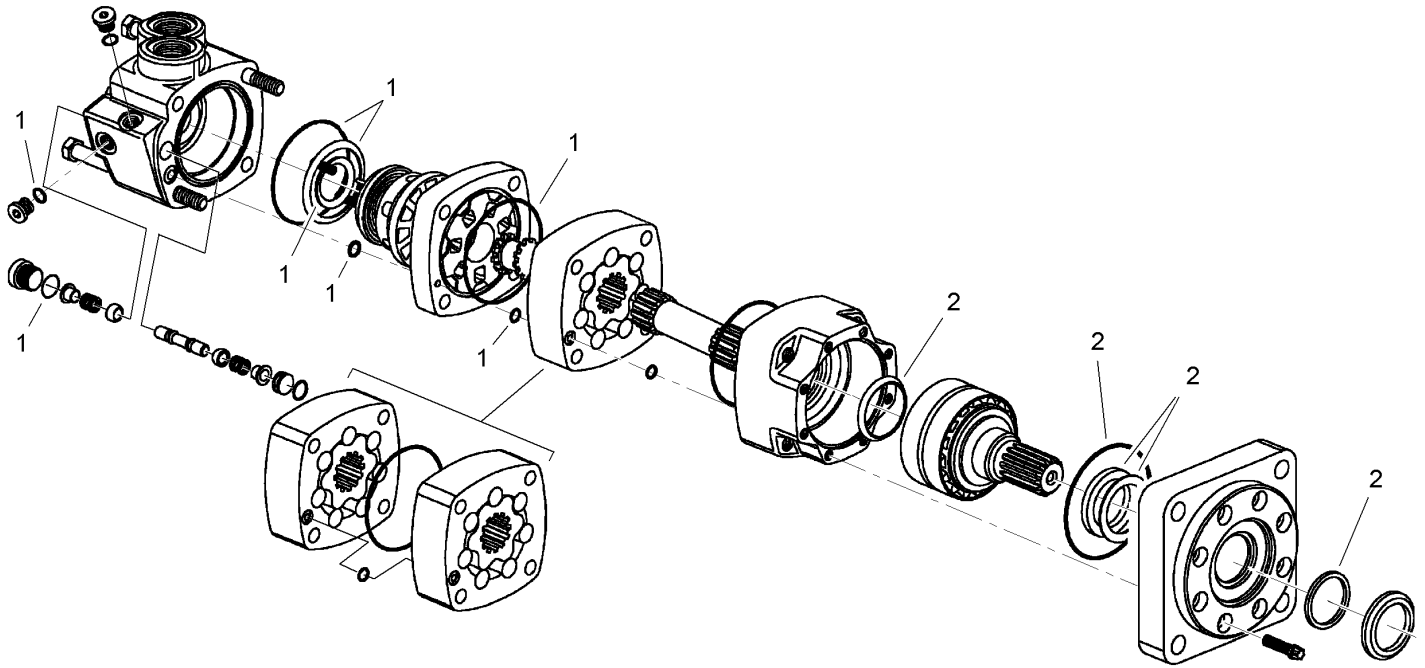
For example, in an illustration, the reference number 2X 37 means that two of the parts identified by reference number 37 are indicated.



High-Speed Trencher Head Assembly

Ref	Part No.	Qty.	Description
1	104-6134	1	Coupler-Face, Flush
2	100-4701	1	Nipple-Connect, Pressure
2:1	100-6120	1	Seal Kit (Not Illustrated)
3	104-5877	2	Screw-HH
4	104-5895	3	Screw-HH
5	3256-27	5	Washer-Flat
6	104-1938	1	Mount ASM
6:2	99-9952	1	Decal-Danger
6:3	99-9953	1	Decal-Danger
7	104-5894-03	1	Crossbar ASM
8	32128-50	5	Nut-Flange
9	3296-23	1	Nut-Lock, NI
10	104-5912-03	1	Auger ASM
11	117-3433-03	1	Auger ASM (Optional Equipment)
12	325-35	1	Screw-HH
13	3274-4	6	Screw-HSH
14	104-1964	1	Sprocket-Trencher
15	104-1969	1	Shaft-Trencher
16	104-1967	1	Seal-Shaft
17	104-1966	2	Cone-Bearing
18	104-1965	2	Cup-Bearing
19	353-990	1	Plug
19:1	237-78	1	O-Ring
20	104-1931-03	1	Mount-Boom

Ref	Part No.	Qty.	Description
21	104-1972	1	Washer-Tongued
22	104-5915	1	Lockwasher-Bearing
23	104-1973	1	Locknut-Bearing
24	104-1920	1	O-Ring
25	3253-7	4	Washer-Lock
26	325-8	4	Screw-HH
27	104-5701	1	Motor-HYD, High Speed
28	104-5870	6	Screw
29	340-7	2	Adapter
29:1	237-65	1	O-Ring
29:2	237-80	1	O-Ring
30	104-1932	2	Hose ASM
30:5	237-80	1	O-Ring
33	104-5935	1	Spacer
35	117-3444	1	Safety Rail ASM
35:2	99-9952	2	Decal-Danger
37	98-3206	2	Decal



Hydraulic Motor Assembly No. 104-5701

Ref	Part No.	Qty.	Description
1	107-9302	1	Rear Seal Kit
2	107-9303	1	Shaft Seal Kit

