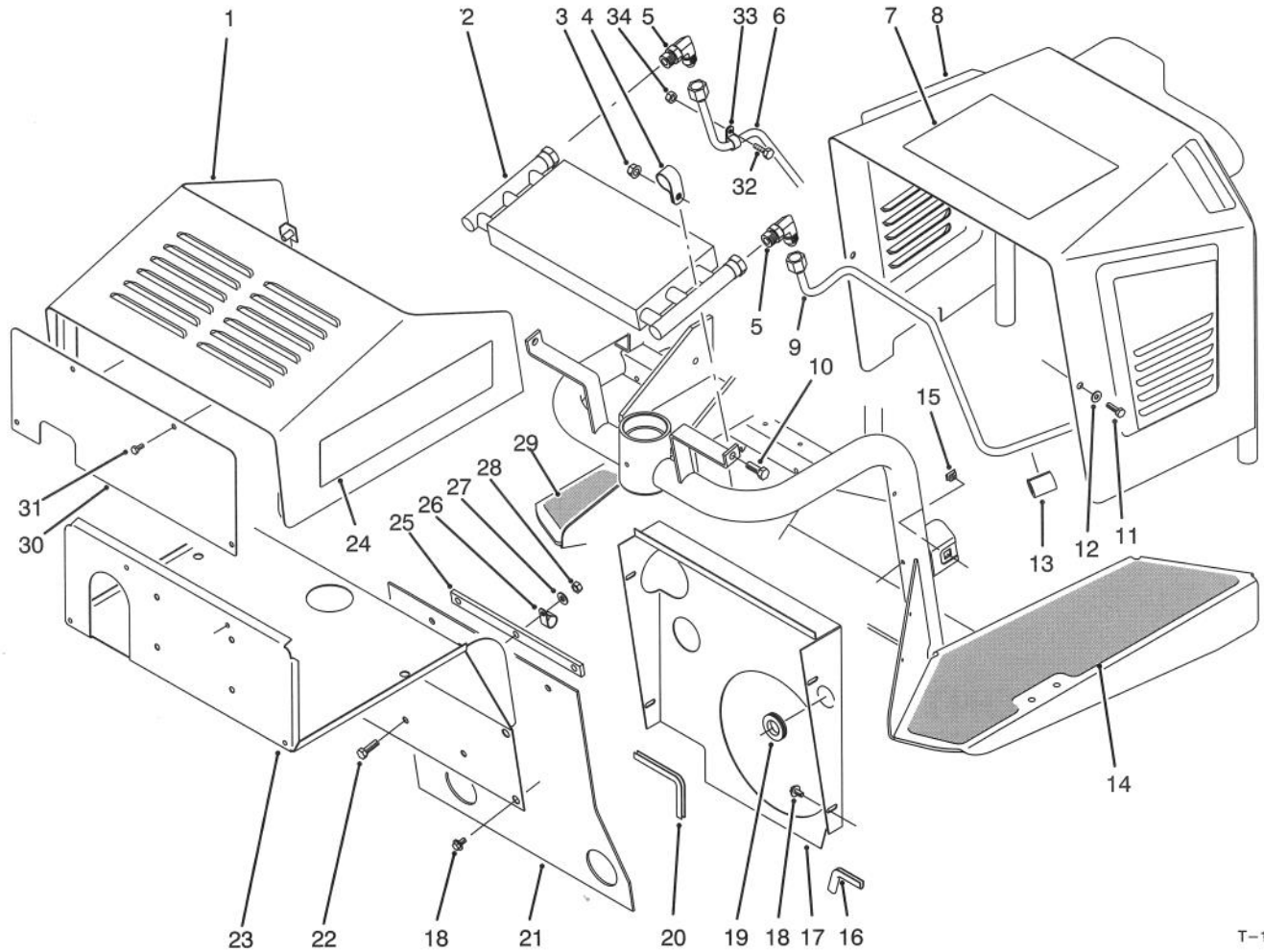




MODEL NO. 08883-40181 & UP	<b>PARTS CATALOG</b>
<b>SAND PRO 3000</b>	



T-1847

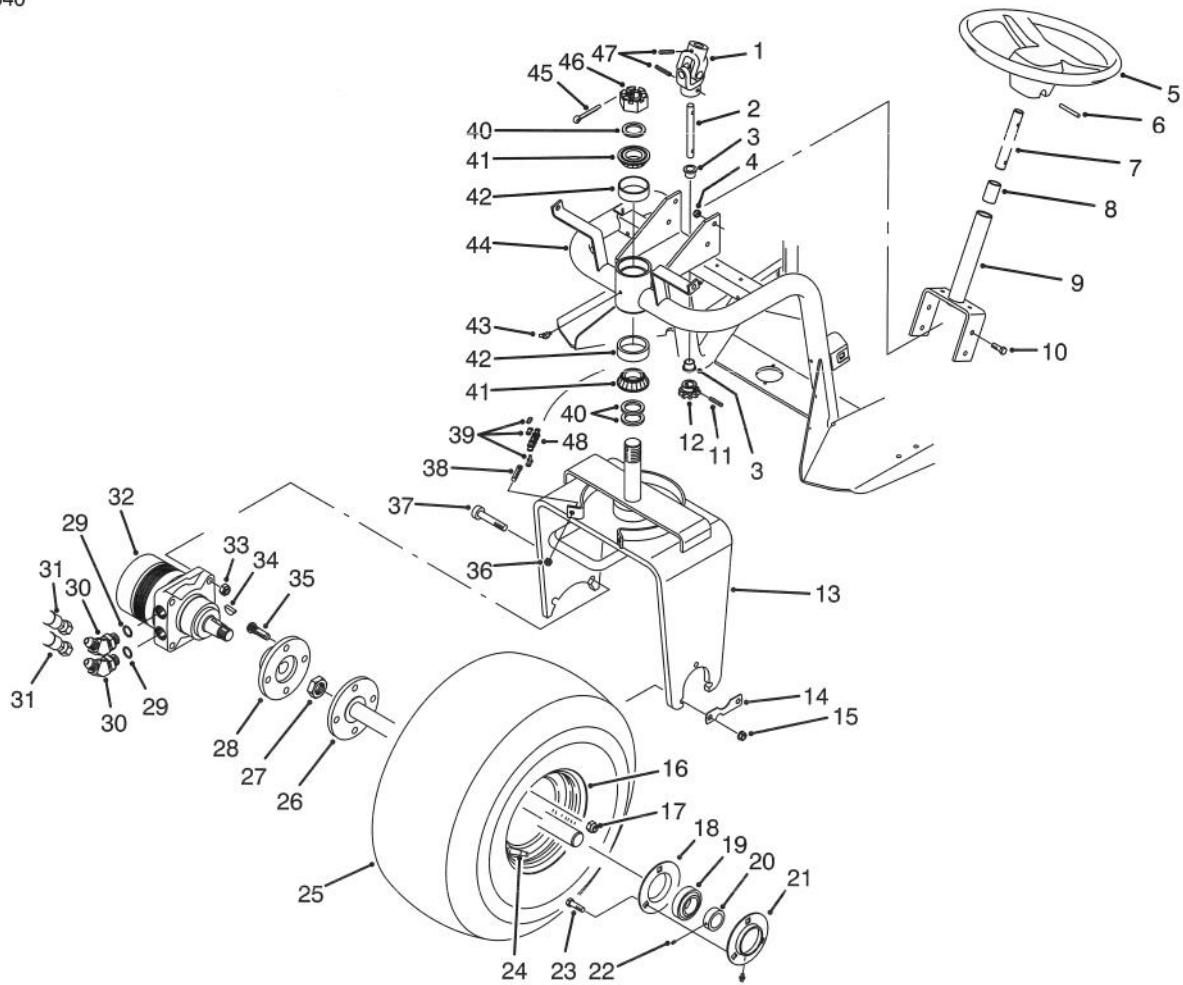
## SHROUDING & OIL COOLER ASSEMBLY

Ref. No.	Part No.	Description	No. Used
1	92-5037	Shroud - Dash	1
2	24-0760	Cooler - Oil	1
3	3290-357	Nut - Flange Lock	2
4	2412-39	Clamp - R	2
5	353-372	Fitting - Hydraulic 90°	2
6	92-7151	Tube - Hydraulic	1
7	92-1706	Decal - Operating	1
8	85-6680	Shield - Engine	1
9	92-7150	Tube - Hydraulic	1
10	323-6	Screw - Cap Hex. Hd.	2
11	322-4	Screw - Cap Hex. Hd.	2
12	3256-35	Washer - Flat	2
13	38-3400	Guard - Rubber	4
14	92-7159	Tread - Foot LH	1
15	3290-496	Nut - Tinnerman	2
16	51-3160	Trim	1
17	92-5029	Shield - Blower	1
18	46-8560	Screw - Hex. Flange Hd.	10

Ref. No.	Part No.	Description	No. Used
19	237-100	Grommet	1
20	51-3161	Trim	1
21	49-9590	Shield - Rubber	1
22	322-5	Screw - Cap Hex. Hd.	3
23	92-5048	Shield - Cooler	1
24	92-8960	Decal - SAND PRO 3000	2
25	49-9980	Retainer - Rubber Shield	1
26	2412-41	Clamp - R	1
27	3256-23	Washer - Flat	3
28	3296-29	Nut - Lock	3
29	92-7158	Tread - Foot RH	1
30	92-8962	Panel - Front	1
31	3234-33	Screw - Hex. Flange Hd.	4
32	321-4	Screw - Cap Hex. Hd.	1
33	2412-73	Clamp - R	1
34	3296-42	Nut - Lock	1
*	3290-378	Tie - Cable	1
*	92-7188	Decal - INFIELD PRO 3000	2

\*Not Illustrated

TPS

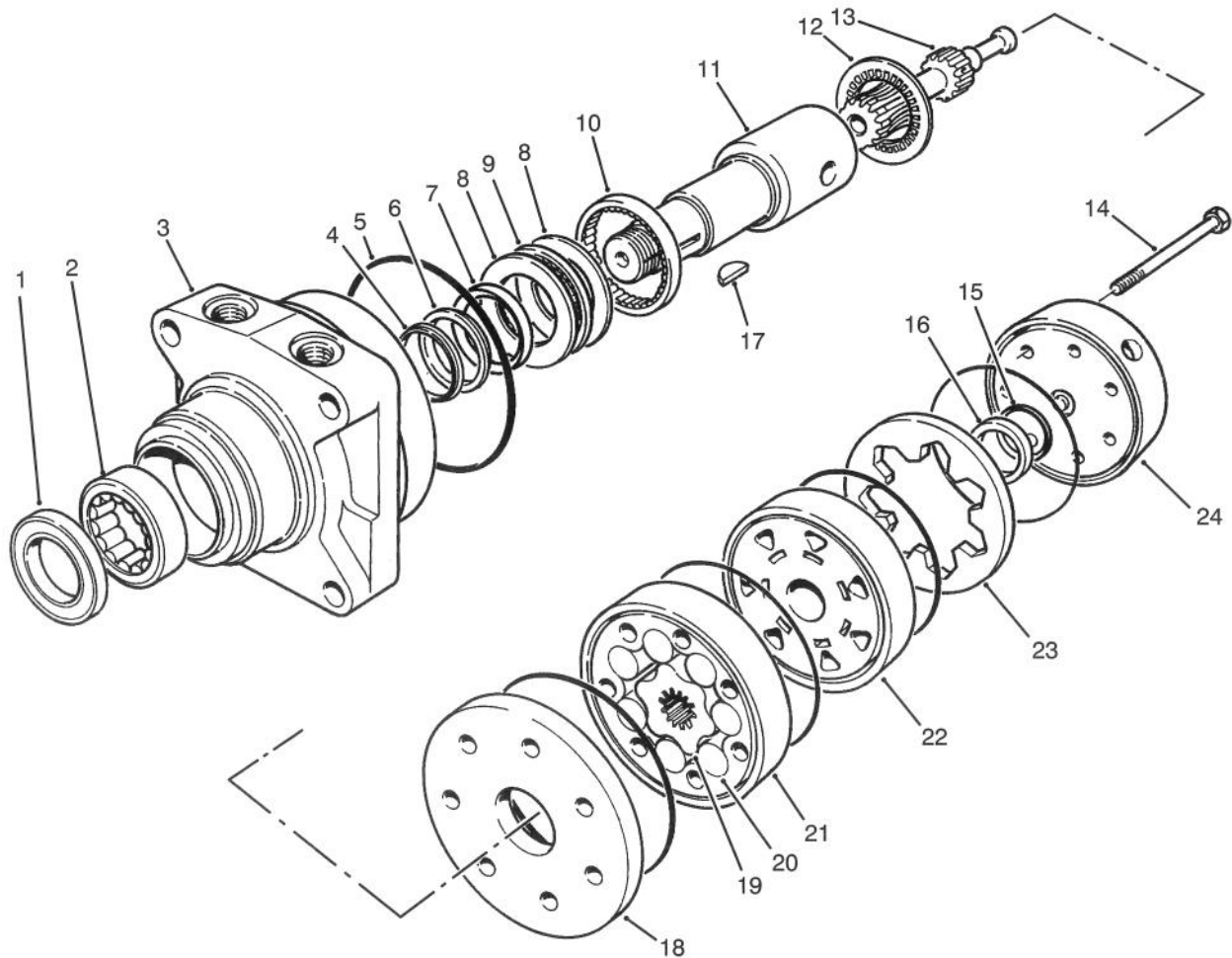


T-1848

## FRONT WHEEL & STEERING ASSEMBLY

Ref. No.	Part No.	Description	No. Used
1	85-9200	Knuckle - Steering	1
2	85-9210	Shaft - Steering Lower	1
3	256-287	Bushing - Flange	2
4	3296-29	Nut - Lock	4
5	76-1420	Wheel - Steering	1
6	32121-111	Pin - Spiral	1
7	85-6610	Shaft - Steering Upper	1
8	256-185	Bushing - Sleeve	2
9	92-5035	Steering Shaft Assembly (Incl. Ref. #8)	1
10	322-5	Screw - Cap Hex. Hd.	4
11	32121-112	Pin - Spiral	1
12	85-9180	Sprocket	1
13	92-7180	Fork - Steering	1
14	88-8350	Tab - Bearing	1
15	3296-39	Nut - Lock	3
16	46-4810	Rim - Wheel	1
17	242-50	Nut - Lug	4
18	85-8950	Flange - Bearing	1
19	251-352	Bearing Assembly (Incl. Ref. #20 & 22)	2
20		Collar - Locking	1
21	85-8940	Flange - Bearing Lube	1
22		Screw - Set	2
23	323-29	Screw - Cap Hex. Hd.	3
24	232-35	Valve - Stem	1
25	85-8290	Tire	1

Ref. No.	Part No.	Description	No. Used
26	18-6290	Axle - Front	1
27	26-3790	Nut - Hex.	1
28	17-4710	Hub - Wheel	1
29	237-80	Seal - O-Ring	2
30	353-427	Fitting - Hydraulic 45° (Incl. Ref. #29)	2
31	51-0600	Hose - Hydraulic	2
32	75-9830	Hydraulic Motor Assembly (Incl. Ref. #34)	1
33	3296-23	Nut - Lock	2
34	3257-42	Key - Woodruff	1
35	10-6830	Stud - Drive	4
36	3296-4	Nut - Lock	2
37	3274-93	Screw - Hex. Socket Hd.	2
38	18-6380	Pin - Steering Adjustment	2
39	2710-11	Link - Connecting	2
40	18-6320	Washer - Steering	3
41	254-70	Cone - Bearing	2
42	254-61	Cup - Bearing	2
43	302-11	Fitting - Grease	1
44	92-5000	Frame Assembly (Incl. Ref. #3 & 43)	1
45	3272-37	Pin - Cotter	1
46	32136-9	Nut - Slotted	1
47	32121-15	Pin - Spiral	2
48	92-5039	Chain - Steering	1



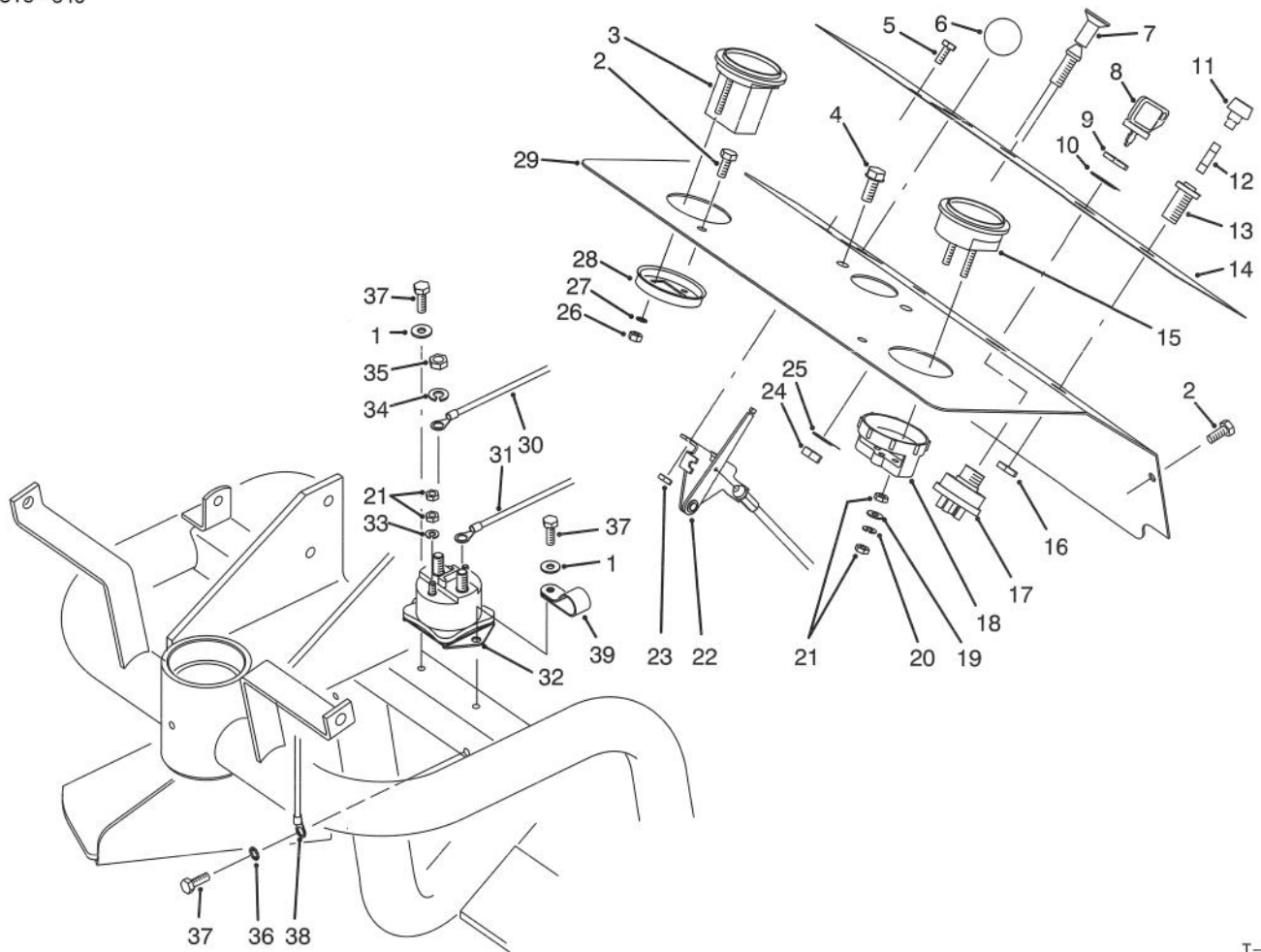
T-0983

### HYDRAULIC DRIVE MOTOR FRONT NO. 75-9830

Ref. No.	Part No.	Description	No. Used
1		Seal - Dirt & Water	1
2		Bearing	1
3		Housing	1
4		Washer - Backup	1
5		Seal - Rings	5
6		Washer - Backup	1
7		Seal - Inner	1
8		Washer - Thrust	2
9		Bearing - Thrust	1
10		Bearing	1
11	76-0860	Shaft - Coupling	1
12	76-0850	Bearing - Thrust	1
13	76-0930	Link - Drive	7
14	76-1030	Screw - Cap Hex. Hd.	1
15		Seal - Commutator	1
16		Commutator	1

Ref. No.	Part No.	Description	No. Used
17	3257-42	Key - Woodruff	1
18	76-0870	Plate - Wear	1
19		Rotor	1
20		Vane	7
21		Stator	1
22	76-0840	Manifold	1
23		Ring - Commutator	1
24	76-0940	Assembly - Cover, End	1
*	76-0950	Rotor Set (Incl. Ref. #19-21)	1
*	76-0880	Assembly - Commutator (Incl. Ref. #15, 16 & 23)	1
*	76-0800	Kit - Seal (Incl. Ref. #1, 4-7 & 15)	1
*	76-0810	Assembly - Housing (Incl. Ref. #2, 3 & 8-10)	1

\*Not Illustrated

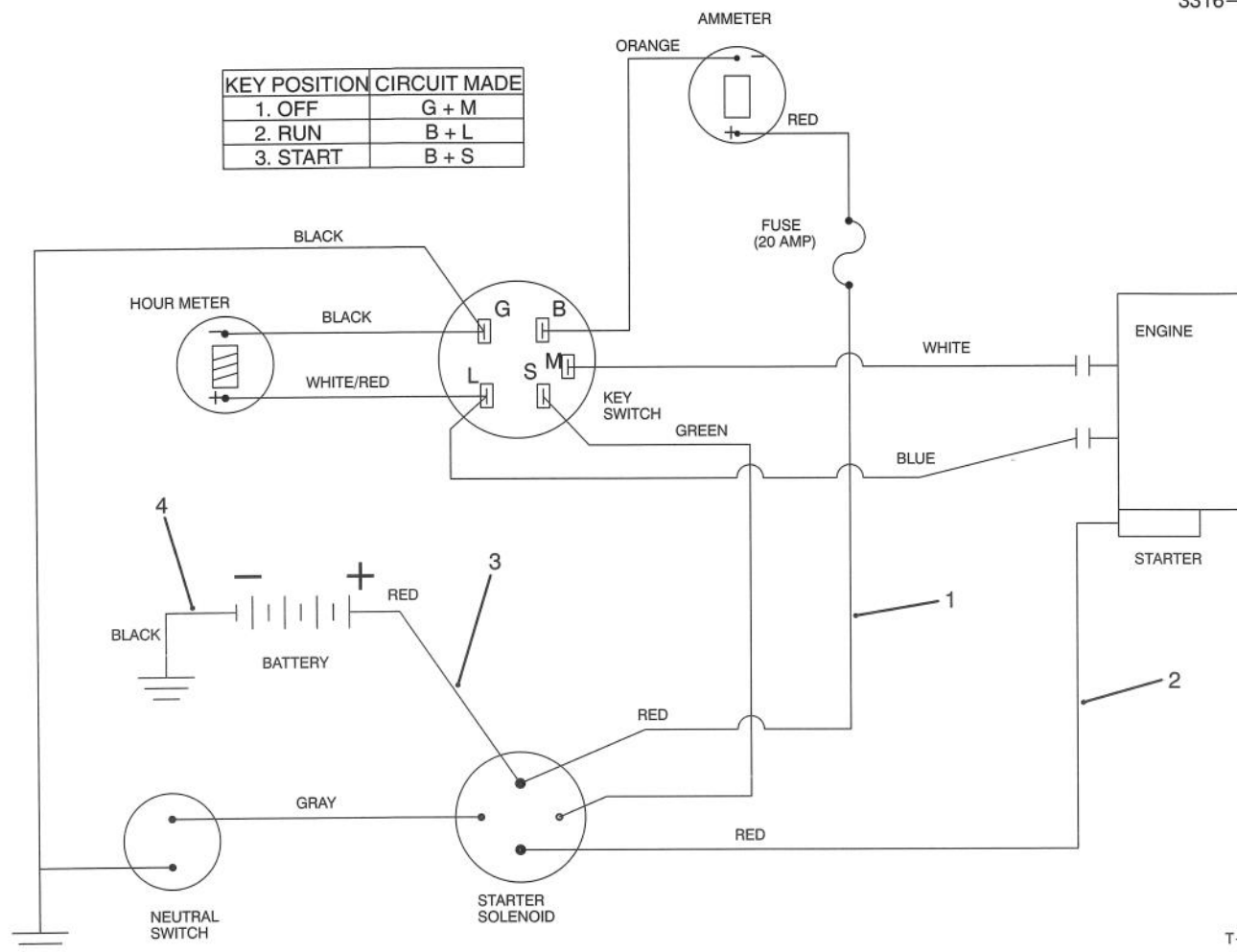


T-1747

## DASH PANEL ASSEMBLY

Ref. No.	Part No.	Description	No. Used
1	3256-22	Washer - Flat	2
2	3234-33	Screw - Cap Hex. Hd.	4
3	66-2950	Hourmeter Assembly (Incl. Ref. #26-28)	1
4	32144-11	Screw - Hex. Flange Hd.	2
5	32105-2	Screw - Cap Hex. Hd.	2
6	233-25	Knob - Throttle	1
7	92-7155	Choke Control Assembly	1
8	63-8360	Key - Ignition	2
9	218-461	Nut - Hex.	1
10	3254-5	Washer - Lock ITLW	1
11		Cap - Fuse Holder	1
12	218-598	Fuse - 20 Amp.	1
13	218-489	Fuse Holder Assembly (Incl. Ref. #11 & 16)	1
14	92-7157	Decal - Dash	1
15	83-0820	Ammeter Assembly (Incl. Ref. #18-21)	1
16		Nut - Hex.	1
17	23-0660	Ignition Switch Assembly (Incl. Ref. #9 & 10)	1
18	39-9600	Clamp - Mounting	1

Ref. No.	Part No.	Description	No. Used
19	3256-21	Washer - Flat	2
20	3254-1	Washer - Lock	2
21	3219-14	Nut - Hex.	8
22	92-7156	Control - Throttle	1
23	3296-12	Nut - Lock	2
24	3219-3	Nut - Hex.	1
25	3254-6	Washer - Lock ITLW	1
26	3217-25	Nut - Hex.	2
27	3255-20	Washer - Lock ITLW	2
28		Clamp - Mounting	1
29	92-5024	Panel - Dash	1
30	86-7570	Wire - Battery-Solenoid	1
31	86-7440	Wire - Solenoid-Starter	1
32	28-4210	Solenoid	1
33	3253-17	Washer - Lock	2
34	3253-4	Washer - Lock	2
35	3218-13	Nut - Jam	2
36	3255-7	Washer - Lock	1
37	32104-42	Screw - Cap Hex. Hd.	3
38	92-5046	Wire Harness Assembly	1
39	2412-73	Clamp - R	1

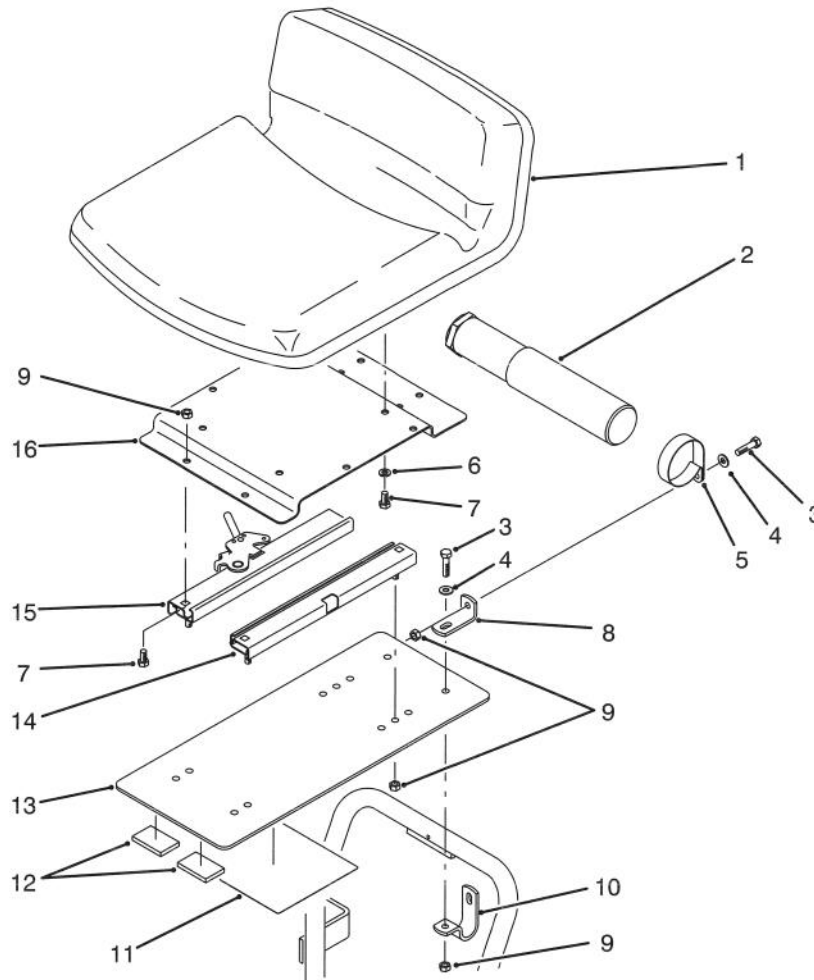


T-1827

## ELECTRICAL SCHEMATIC

Ref. No.	Part No.	Description	No. Used
1	92-5046	Harness - Wire	1
2	86-7440	Wire Assembly (Solenoid - Starter)	1

Ref. No.	Part No.	Description	No. Used
3	86-7570	Cable - Battery Pos.	1
4	86-7450	Wire Assembly (Engine Ground)	1

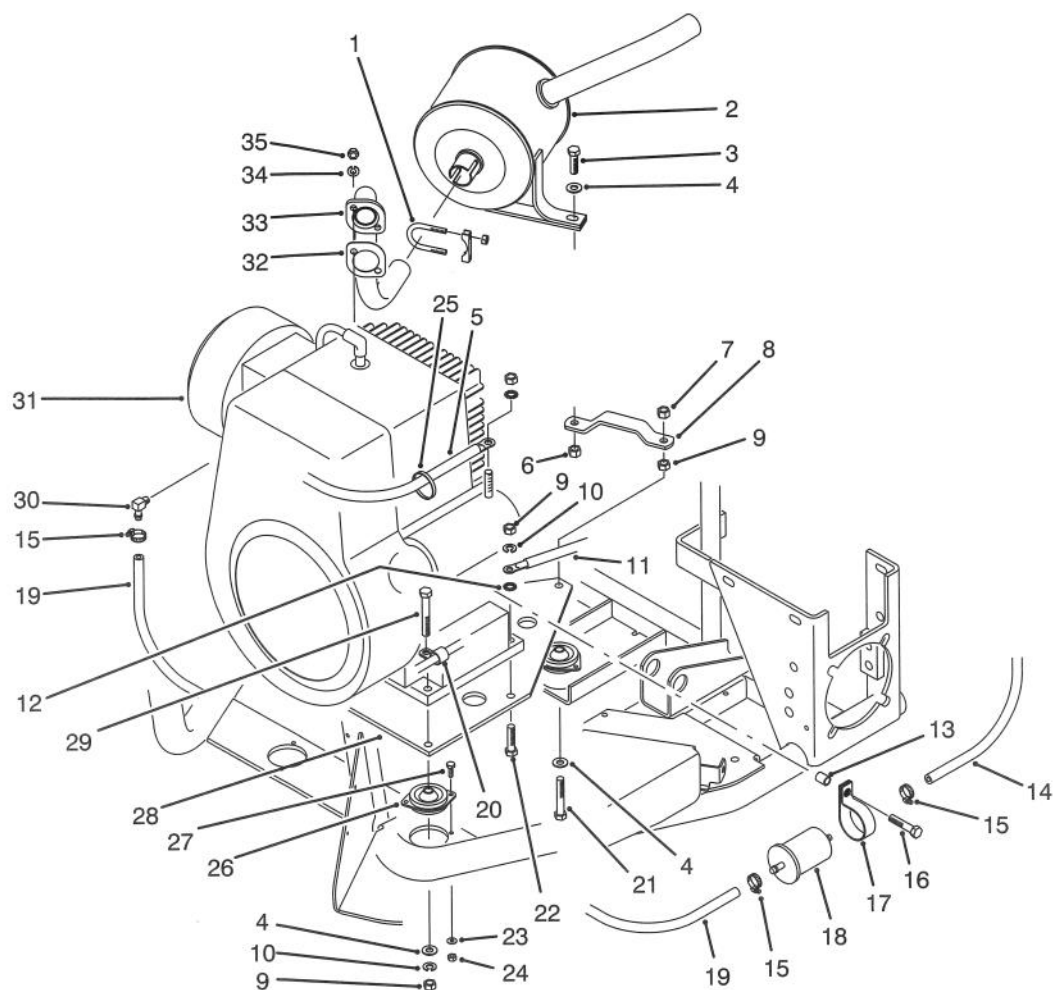


T-1854

### SEAT ASSEMBLY

Ref. No.	Part No.	Description	No. Used
1	27-5170	Seat Assembly	1
2	74-0720	Tube - Manual	1
3	322-6	Screw - Cap Hex. Hd.	4
4	3256-3	Washer - Flat	4
5	2412-133	Clamp - R	2
6	3253-4	Washer - Lock	4
7	322-2	Screw - Cap Hex. Hd.	8
8	92-8973	Angle	2

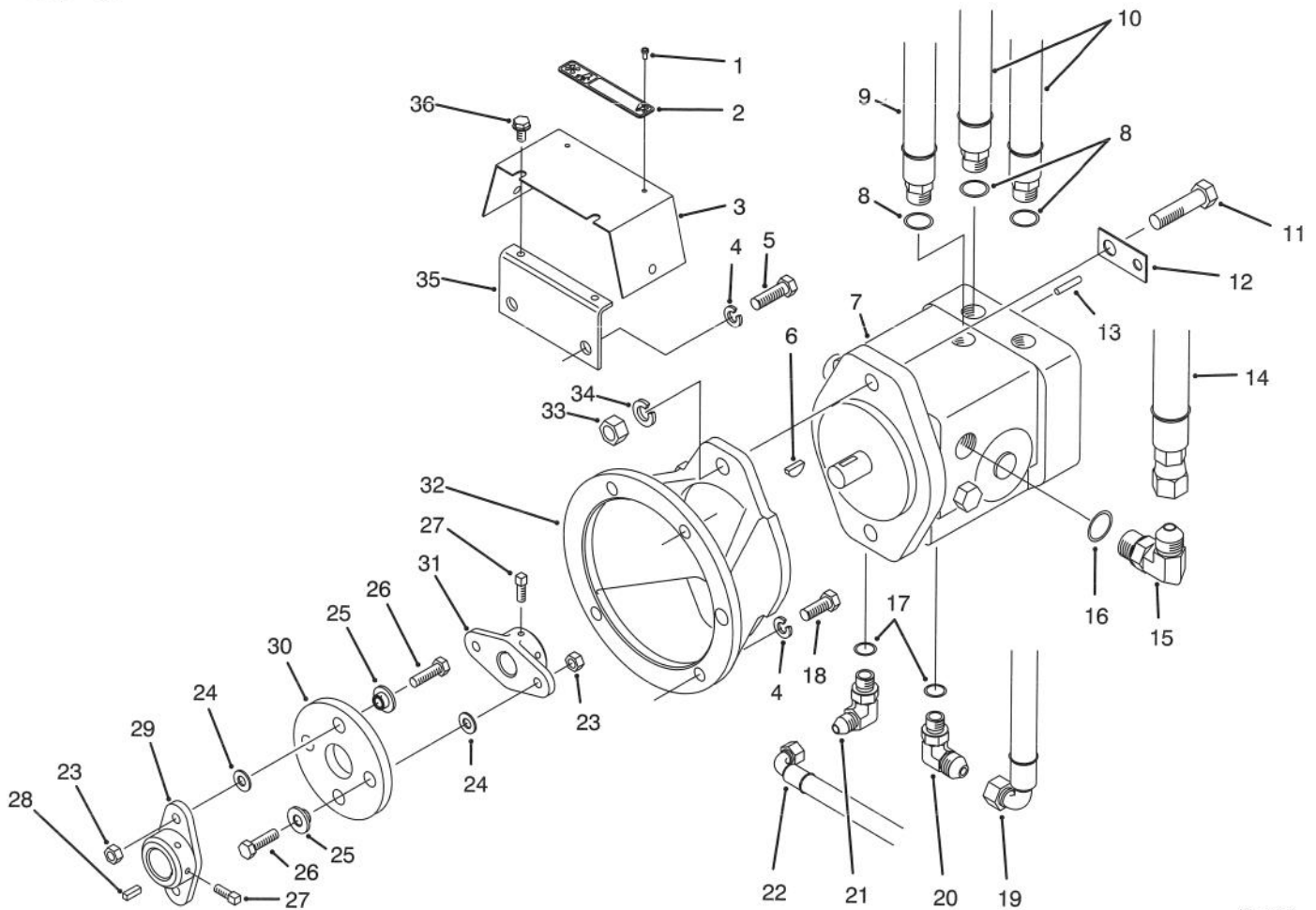
Ref. No.	Part No.	Description	No. Used
9	3296-29	Nut - Lock	12
10	92-8972	Clamp - Seat	2
11	92-8965	Decal - Service	1
12	74-0340	Cushion - Rubber	2
13	92-7170	Base - Seat	1
14	51-0780	Slider - Seat	1
15	51-0790	Adjuster - Seat	1
16	86-7610	Plate - Seat	1



T-1749

## ENGINE INSTALLATION ASSEMBLY

Ref. No.	Part No.	Description	No. Used	Ref. No.	Part No.	Description	No. Used
1	2412-37	Muffler Clamp Assembly	1	19	51-0670	Hose - Fuel	1
2	51-0700	Muffler	1	20	2412-81	Clamp - R	1
3	323-7	Screw - Cap Hex. Hd.	1	21	323-11	Screw - Cap Hex. Hd.	1
4	3256-24	Washer - Flat	3	22	323-8	Screw - Cap Hex. Hd.	2
5	86-7440	Wire - Solenoid-Starter	1	23	3256-14	Washer - Flat	6
6	3296-44	Nut - Lock	1	24	3296-12	Nut - Lock	6
7	3296-59	Nut - Lock	1	25	3290-378	Tie - Cable	1
8	49-9580	Bracket - Muffler	1	26	18-8000	Mount - Rubber	3
9	3217-7	Nut - Hex.	5	27	3290-134	Screw - Cap Hex. Hd.	6
10	3253-5	Washer - Lock	4	28	49-9500	Base - Engine	1
11	86-7450	Wire - Battery-Ground	1	29	323-13	Screw - Cap Hex. Hd.	2
12	3255-9	Washer - Lock ETLW	1	30	67-1690	Fitting - Fuel 90°	1
13	61-3230	Spacer - Fuel Filter	1	31	16-3989	Engine Assembly (Incl. Ref. #32)	1
14	84-8050	Hose - Fuel	1	32	2210-118	Gasket - Exhaust	1
15	2412-108	Clamp - Hose	3	33	49-9550	Pipe - Exhaust	1
16	323-9	Screw - Cap Hex. Hd.	1	34	3253-4	Washer - Lock	2
17	2412-44	Clamp - R	1	35	3217-6	Nut - Hex.	2
18	18-1520	Filter - Fuel	1				

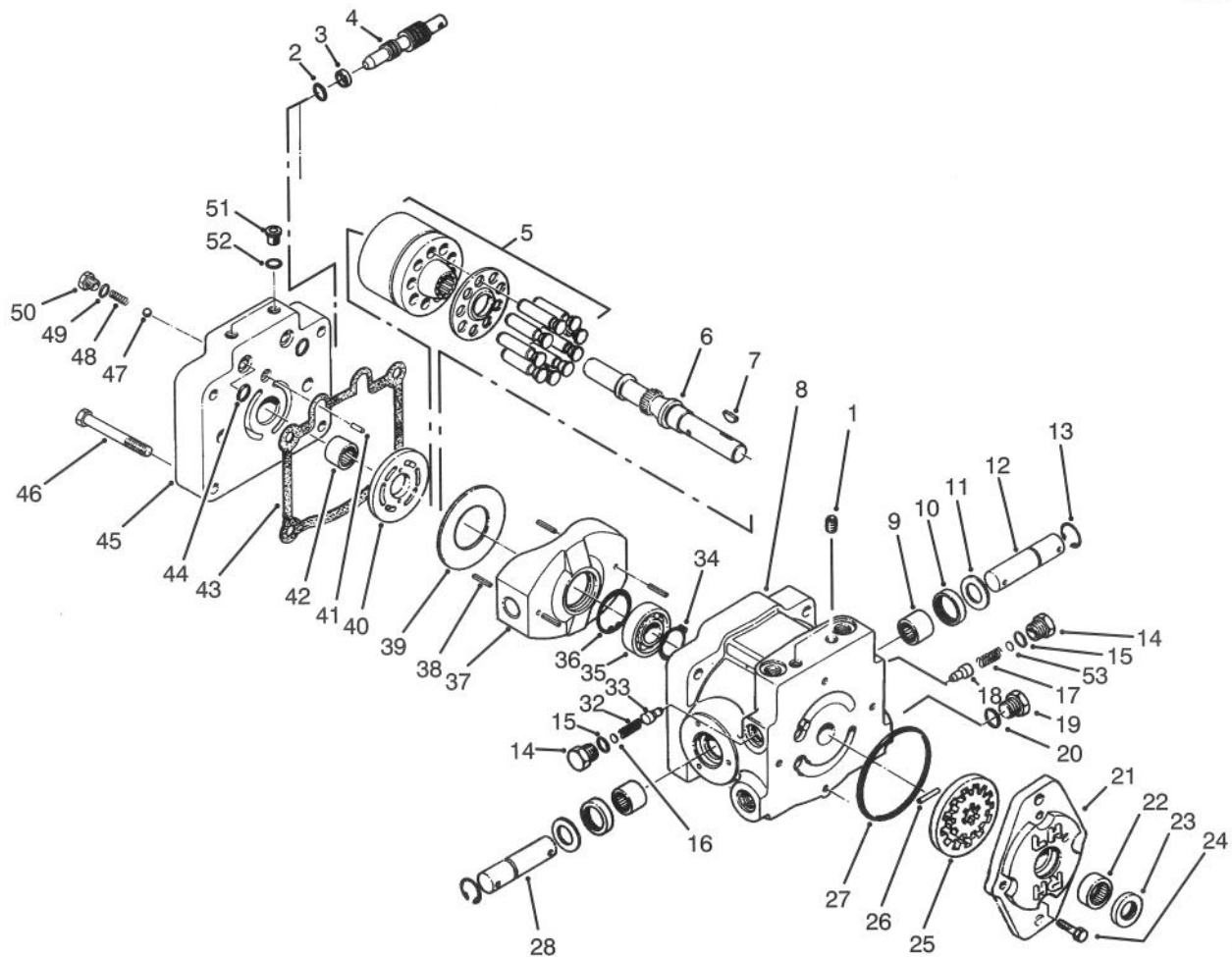


T-1849

## HYDRAULIC PUMP INSTALLATION ASSEMBLY

Ref. No.	Part No.	Description	No. Used
1	3269-32	Rivet - Pop	2
2	76-8750	Plate - Warning	1
3	92-8967	Shield - Dampener	1
4	3253-5	Washer - Lock	4
5	323-7	Screw - Cap Hex. Hd.	2
6	3257-32	Key - Woodruff	1
7	92-8790	Hydraulic Pump Assembly (Incl. Ref. #6)	1
8	237-79	Seal - O-Ring	3
9	21-5360	Hydraulic Hose Assembly (Incl. Ref. #8)	1
10	21-5370	Hydraulic Hose Assembly (Incl. Ref. #8)	2
11	325-8	Screw - Cap Hex. Hd.	2
12	26-2950	Standoff - Wire	1
13	32121-16	Pin - Roll	1
14	53-9470	Hose - Hydraulic	1
15	353-370	Fitting - Hydraulic 90° (Incl. Ref. #16)	1
16	237-80	Seal - O-Ring	1
17	237-42	Seal - O-Ring	2

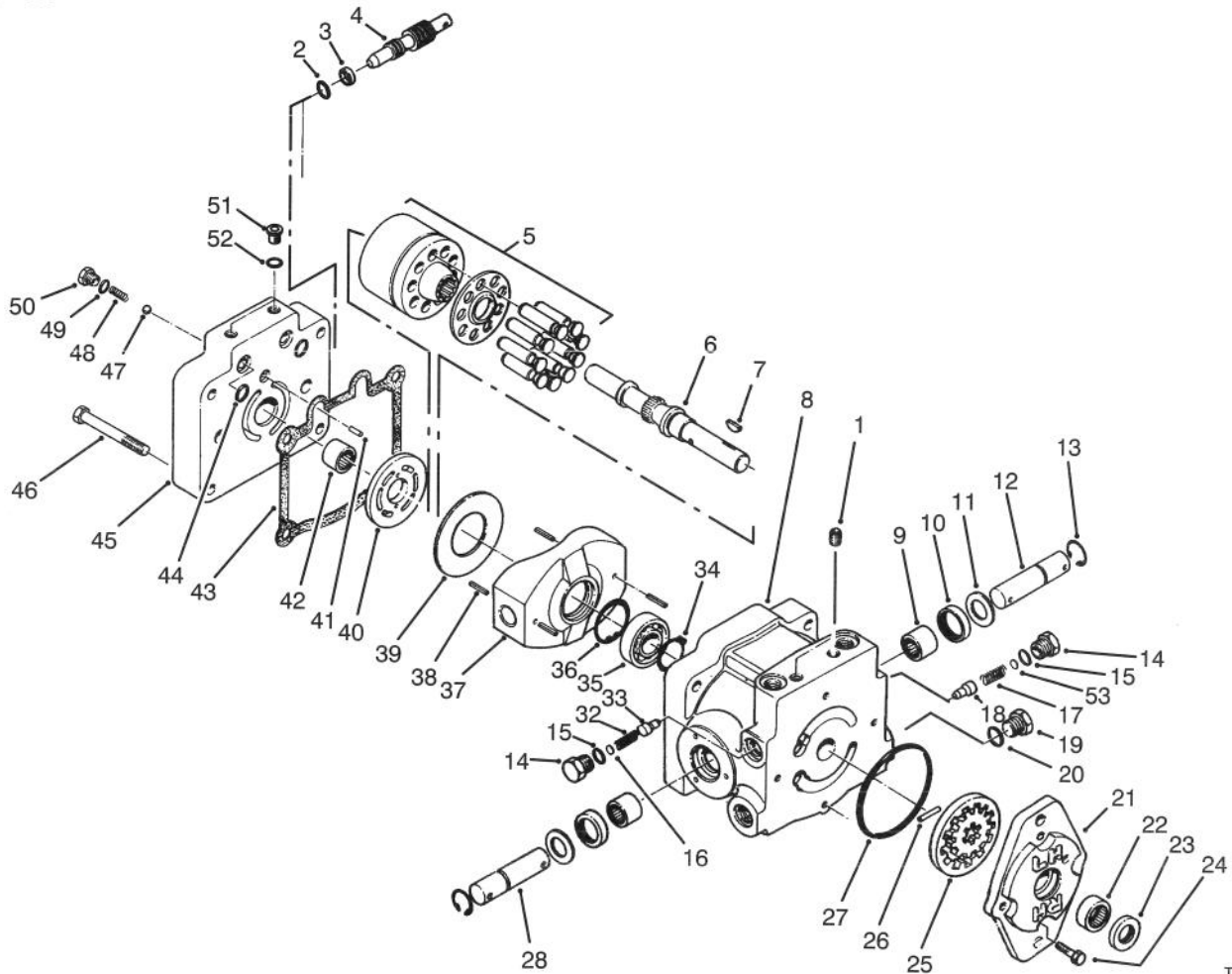
Ref. No.	Part No.	Description	No. Used
18	323-6	Screw - Cap Hex. Hd.	2
19	51-0590	Hose - Hydraulic	1
20	353-511	Fitting - Hydraulic 90° (Incl. Ref. #17)	1
21	353-374	Fitting - Hydraulic 90° (Incl. Ref. #17)	1
22	49-9970	Hose - Hydraulic	1
23	3296-29	Nut - Lock	4
24	3256-23	Washer - Flat	4
25	27-6600	Spacer - Coupler	4
26	322-16	Screw - Cap Hex. Hd.	4
27	3241-5	Screw - Square Hd. Set	4
28	10-7070	Key - Square	1
29	27-1960	Hub - Engine	1
30	44-2230	Coupling - Rubber	1
31	49-9600	Hub - Pump	1
32	37-8030	Mount - Pump	1
33	3217-9	Nut - Lock	2
34	3253-7	Washer - Lock	2
35	92-8963	Mount - Cover	1
36	46-8560	Screw - Hex. Flange Hd.	3



T-0245

## HYDRAULIC PUMP ASSEMBLY NO. 92-8790

Ref. No.	Part No.	Description	No. Used	Ref. No.	Part No.	Description	No. Used
1	285-17	Plug - Pipe	2	26	25-2530	Pin - Straight	1
2	237-22	O-Ring	1	27	237-95	O-Ring	1
3	25-2630	Ring	1	28	49-8480	Shaft - Trunion	1
4	88-8220	Valve - By-Pass	1	32	25-2480	Spring - Charge Relief	1
5	25-2600	Kit - Cylinder Block	1	33	83-7260	Cone - Relief Valve	1
6	67-8020	Shaft - Pump	1	34	32120-15	Ring - Retaining	1
7	3257-32	Key - Woodruff	1	35	251-8	Bearing - Ball	1
8	54-7890	Kit - Housing (Incl. Ref. #1, 8-10)	1	36	32120-11	Ring - Retaining	1
9	252-82	Bearing - Needle	2	37	25-2450	Plate - Swash	1
10	25-3210	Seal - Lip	2	38	32121-91	Pin - Spring	3
11	25-2510	Washer	2	39	25-2380	Plate - Thrust	1
12	28-3670	Shaft - Trunion	1	40	25-2390	Plate - Valve	1
13	32151-46	Ring - Retaining	2	41	25-2430	Pin - Straight	1
14	25-2460	Plug	2	42	46-8400	Bearing - Needle	1
15	237-86	O-Ring	2	43	25-2400	Gasket	1
16	49-7840	Kit - Shim Pack	2	44	237-30	O-Ring	2
17	25-2570	Spring - Relief Valve	1	45		Cap - End, Pump	1
18	83-7260	Cone - Relief Valve	1	46	323-11	Screw - Cap Hex Hd.	4
19	88-8210	Plug - Standard Thread	1	47	25-2490	Ball - Check Valve	2
20		O-Ring	1	48	25-2640	Spring - Valve Check	2
21	25-2690	Housing - Charge Pump	1	49	237-86	O-Ring	2
22	67-8050	Bearing - Needle	1	50	25-2650	Plug - Check Valve	2
23	67-8060	Seal - Lip	1	51	92-8776	Plug Assembly (Incl. Ref. #52)	2
24	322-4	Screw - Cap, Hex. Hd.	4	52	92-8777	Seal - O-Ring	2
25	25-2680	Assembly - Gerator	1				



T-0245

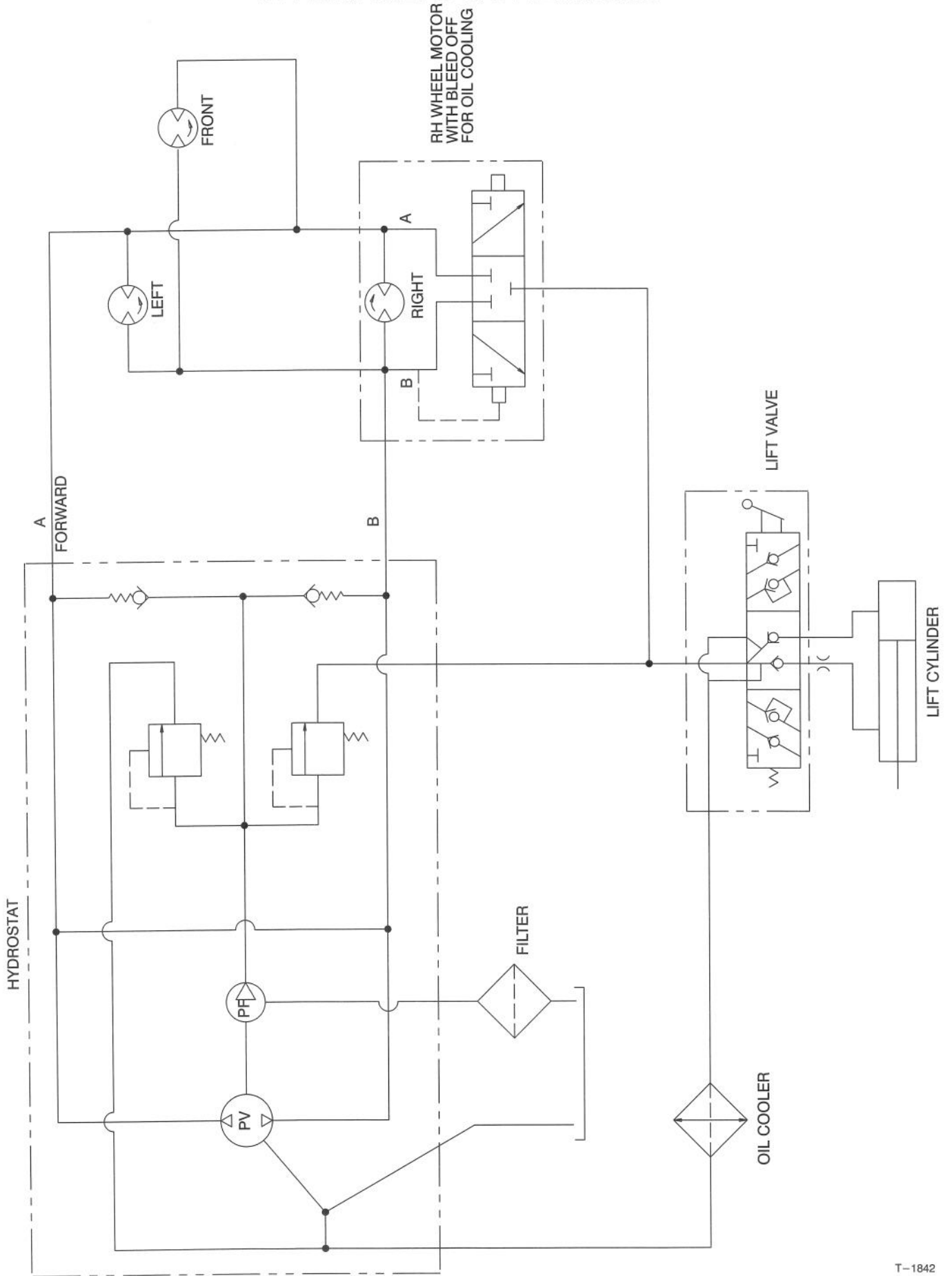
## HYDRAULIC PUMP ASSEMBLY NO. 92-8790 (Continued)

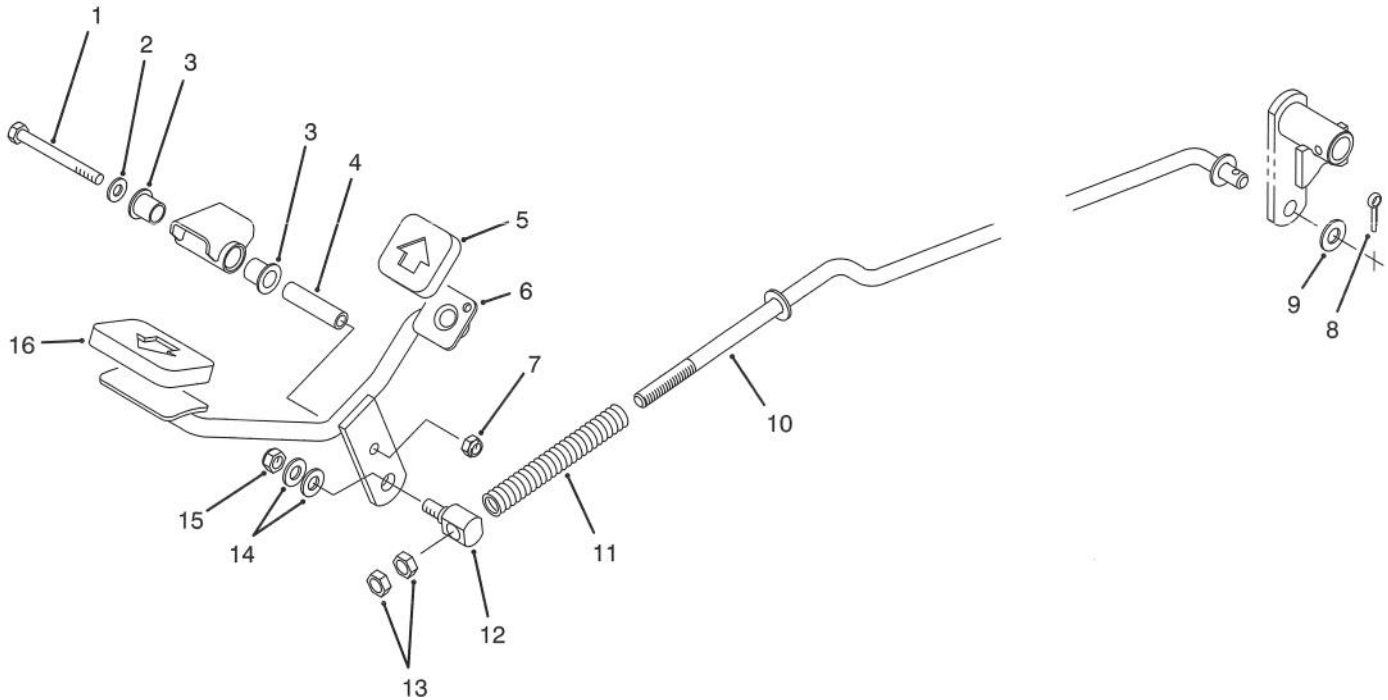
Ref. No.	Part No.	Description	No. Used
53	49-8470	Kit - Shim-Pack	2
*	25-3180	Kit - Check Valve (Incl. Ref. #47-50)	1
*	49-8510	Kit - Charge Relief Valve (Incl. Ref. #14-16 & 32-33)	1

Ref. No.	Part No.	Description	No. Used
*	49-8520	Kit - Implement Relief (Incl. Ref. #14-18)	1
*	25-3220	Kit - Charge Pump (Incl. Ref. #21-27)	1

\*Not Illustrated

# HYDRAULIC SCHEMATIC



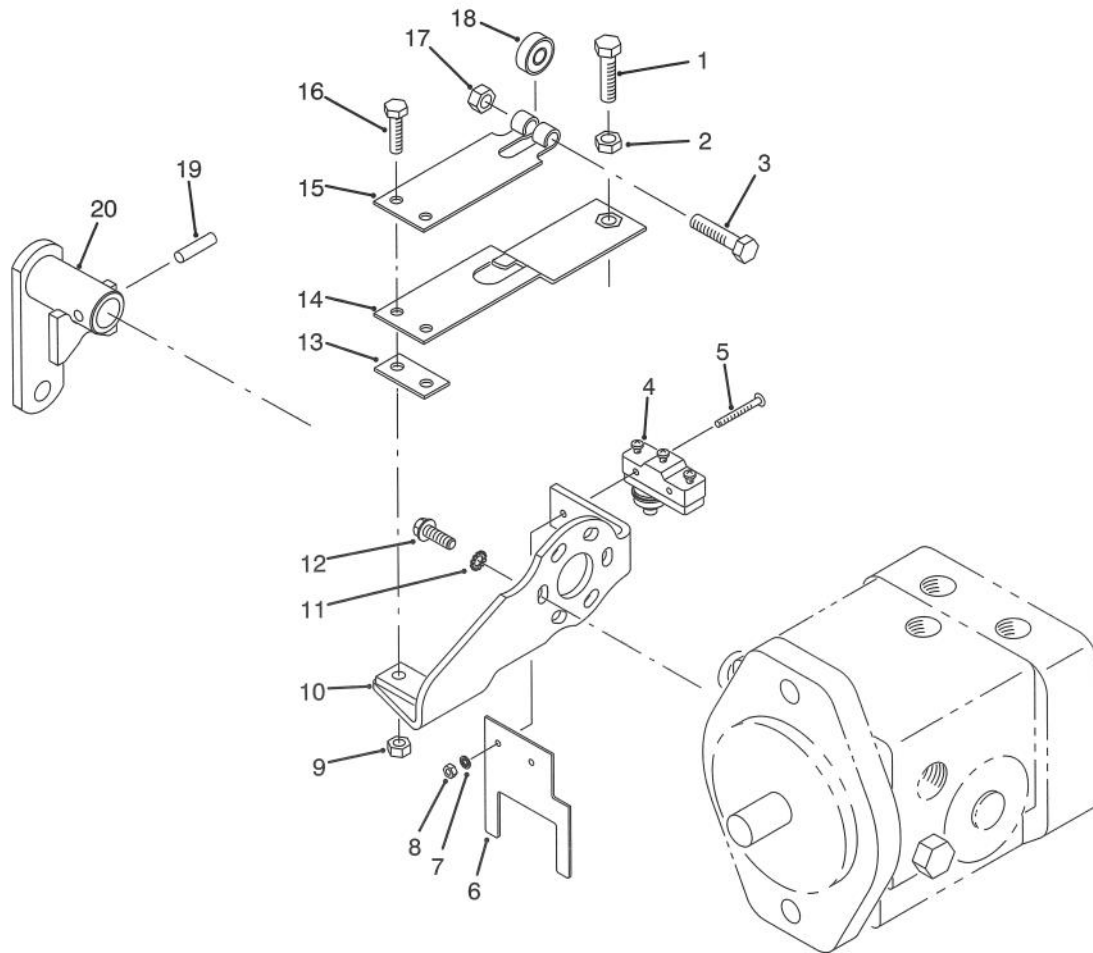


## TRACTION PEDAL ASSEMBLY

T-1852

Ref. No.	Part No.	Description	No. Used
1	322-14	Screw - Cap Hex. Hd.	1
2	3256-23	Washer - Flat	1
3	256-219	Bushing - Flange	2
4	85-8960	Spacer	1
5	74-9110	Pad - Reverse Pedal	1
6	92-2343	Pedal - Traction	1
7	3296-29	Nut - Lock	1
8	3272-16	Pin - Cotter	1

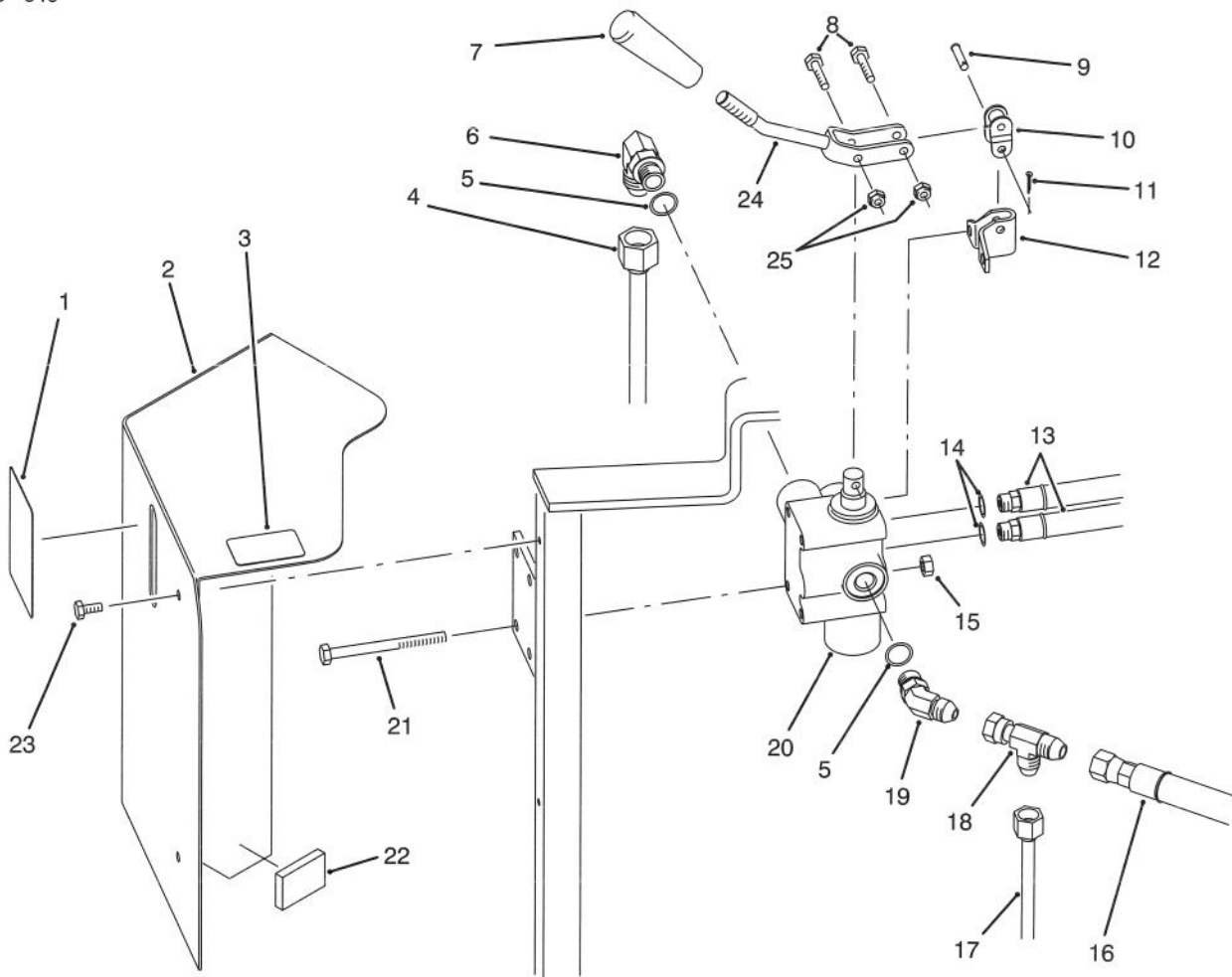
Ref. No.	Part No.	Description	No. Used
9	3256-25	Washer - Flat	1
10	92-7153	Rod - Traction	1
11	38-0860	Spring - Compression	1
12	92-2344	Stud - Adjuster	1
13	3220-4	Nut - Jam	2
14	3256-24	Washer - Flat	2
15	3296-39	Nut - Lock	1
16	74-9100	Pad - Forward Pedal	1



T-1843

## NEUTRAL SYSTEM ASSEMBLY

Ref. No.	Part No.	Description	No. Used	Ref. No.	Part No.	Description	No. Used
1	3210-4	Screw - Cap Hex. Hd.	1	11	3255-7	Washer - Lock ETLW	3
2	3219-2	Nut - Hex.	1	12	49-2040	Screw - Self Tapping	3
3	322-17	Screw - Cap Hex. Hd.	1	13	51-3150	Shim - Spring	1
4	29-6162	Switch - Neutral	1	14	29-6170	Leaf Spring Assembly	1
5	3249-11	Screw - Round Hd.	2	15	29-6150	Spring - Leaf	1
6	46-8810	Stop - Leaf Spring	1	16	321-6	Screw - Cap Hex. Hd.	2
7	3254-9	Washer - Lock ITLW	2	17	3296-29	Nut - Lock	1
8	3217-16	Nut - Hex.	2	18	251-259	Bearing - Ball	1
9	3296-42	Nut - Lock	2	19	32121-24	Pin - Roll	1
10	29-6120	PLate - Pump	1	20	26-2810	Lever - Pump	1

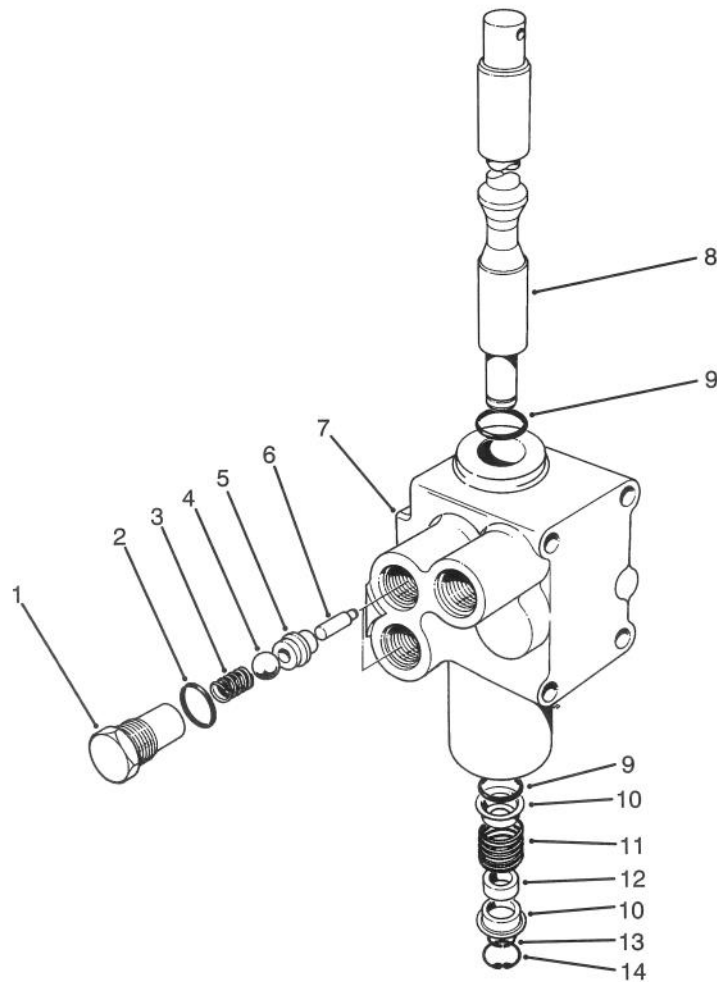


T-1753

## LIFT VALVE INSTALLATION ASSEMBLY

Ref. No.	Part No.	Description	No. Used
1	80-1910	Decal - Lift	1
2	84-8170	Shroud - Lift Valve	1
3	63-8440	Decal - Hot Surface	1
4	92-7151	Tube - Hydraulic	1
5	237-42	Seal - O-Ring	2
6	353-511	Fitting - Hydraulic 90° (Incl. Ref. #5)	1
7	233-39	Knob - Lift Valve	1
8	3290-360	Screw - Cap Hex. Hd.	2
9		Pin - Clevis	1
10	2710-20	Offset Link Assembly (Incl. Ref. #9 & 11)	1
11		Pin - Cotter	1
12	88-8480	Bracket - Pivot	1

Ref. No.	Part No.	Description	No. Used
13	22-4670	Hydraulic Hose Assembly (Incl. Ref. #14)	2
14	237-78	Seal - O-Ring	2
15	3296-42	Nut - Lock	4
16	51-0590	Hose - Hydraulic	1
17	51-0620	Tube - Hydraulic	1
18	353-877	Fitting - Hydraulic Tee	1
19	353-212	Fitting - Hydraulic 90° (Incl. Ref. #5)	1
20	43-1950	Lift Valve Assembly	1
21	321-23	Screw - Cap Hex. Hd.	4
22	55-4450	Bumper - Rubber	1
23	32104-76	Screw - Cap Hex. Hd.	2
24	85-8900	Lever - Lift	1
25	3296-2	Nut - Lock	2

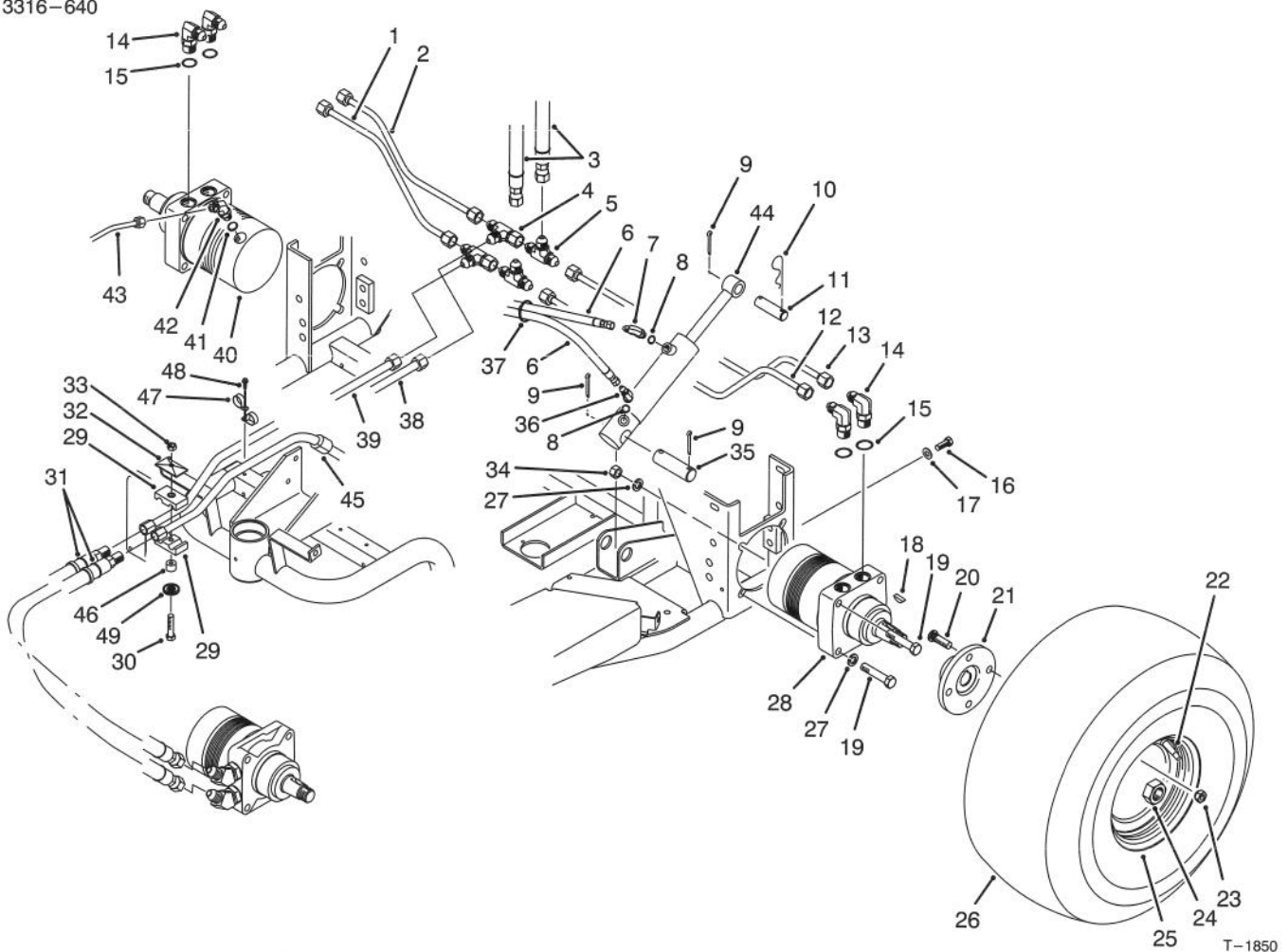


T-0236

## HYDRAULIC LIFT VALVE ASSEMBLY NO. 43-1950

Ref. No.	Part No.	Description	No. Used
1	22-8330	Plug	2
2	237-42	O-Ring	2
3	22-8340	Spring	2
4	22-8350	Ball	2
5	22-8370	Seat - Check Valve	2
6	22-8360	Pin - Cam	2
7	43-1730	Body	1

Ref. No.	Part No.	Description	No. Used
8	22-8420	Spool	1
9	22-8500	O-Ring	2
10	22-8380	Retainer - Spring	2
11	22-8410	Spring	1
12	23-3030	Spacer	1
13	22-8480	Ring - Spool Retaining	1
14	22-8490	Ring - Retaining	1

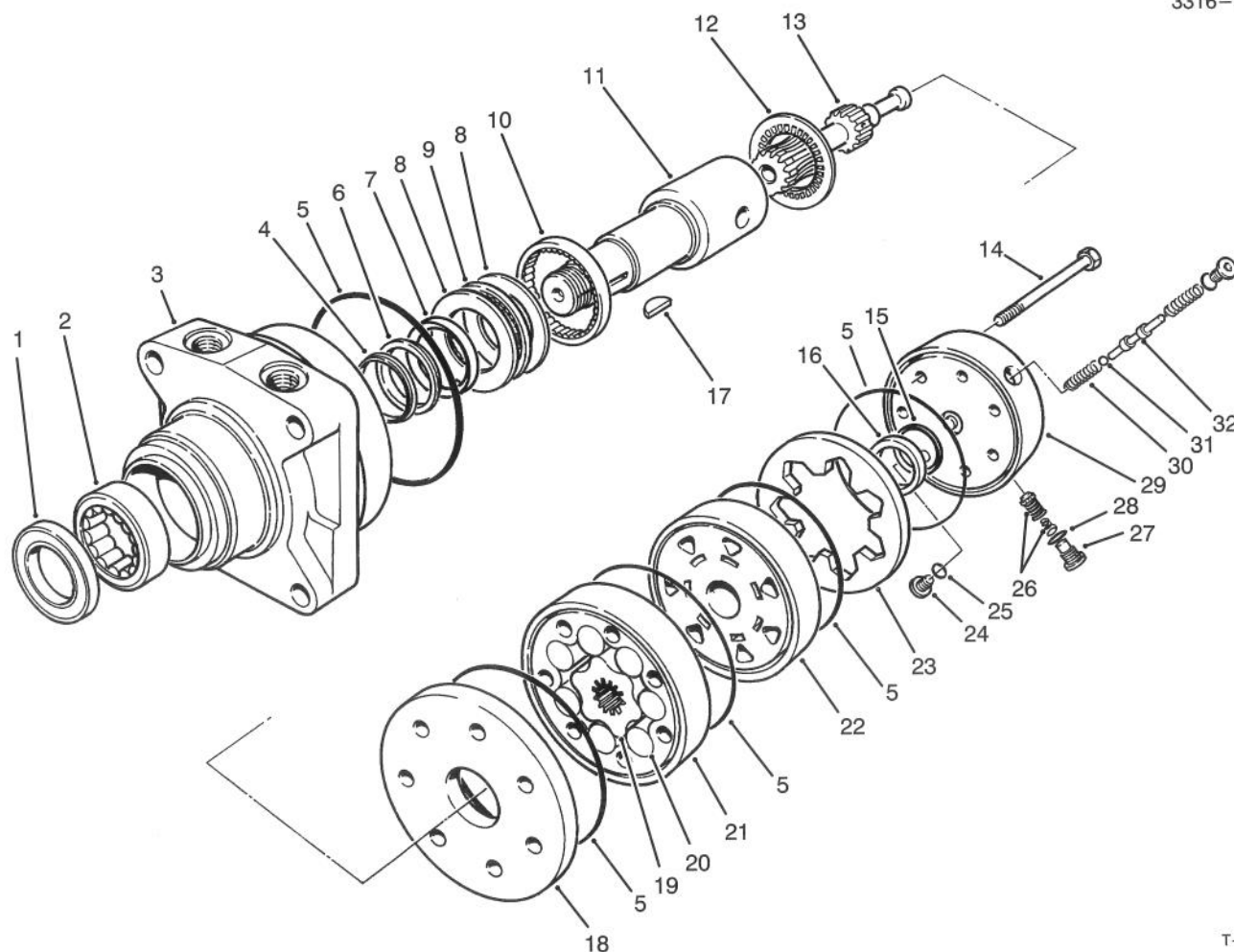


T-1850

## REAR WHEEL DRIVE ASSEMBLY

Ref. No.	Part No.	Description	No. Used
1	18-6700	Tube - Hydraulic	1
2	18-6730	Tube - Hydraulic	1
3	21-5370	Hose - Hydraulic	2
4	353-425	Fitting - Hydraulic Tee	2
5	353-424	Fitting - Hydraulic Tee	2
6	22-4670	Hose - Hydraulic	2
7	354-132	Fitting Hydraulic 90° (Incl. Ref. #8)	1
8	237-78	Seal - O-Ring	2
9	3272-23	Pin - Cotter	3
10	3290-256	Pin - Hair	1
11	18-7310	Pin - Cylinder	1
12	18-6710	Tube - Hydraulic	1
13	18-6720	Tube - Hydraulic	1
14	353-426	Fitting Hydraulic 90° (Incl. Ref. #15)	4
15	237-79	Seal - O-Ring	4
16	3256-26	Washer - Flat	4
17	325-5	Screw - Cap Hex. Hd.	4
18	3257-42	Key - Woodruff	2
19	325-10	Screw - Cap Hex. Hd.	8
20	10-6830	Stud - Drive	8
21	17-4710	Hub - Wheel	2
22	232-35	Valve - Stem	2
23	242-50	Nut - Lug	8
24	26-3790	Nut - Lock	2
25	46-4810	Rim - Wheel	2
26	85-8290	Tire	2

Ref. No.	Part No.	Description	No. Used
27	3253-7	Washer - Lock	8
28	75-9831	Hydraulic Motor Assembly (Incl. Ref. #18)	1
29	56-7976	Clamp - Tube	2
30	321-18	Screw - Cap Hex. Hd.	1
31	51-0600	Hose - Hydraulic	2
32	69-9760	Plate - Cover	1
33	3296-8	Nut - Lock	1
34	3217-9	Nut - Hex.	8
35	18-7160	Pin - Cylinder	1
36	353-431	Fitting - Hydraulic 45° (Incl. Ref. #8)	1
37	3290-378	Tie - Cable	1
38	92-7183	Tube - Hydraulic	1
39	92-7183	Tube - Hydraulic	1
40	75-9840	Hydraulic Motor Assembly (Incl. Ref. #18)	1
41	237-42	Seal - O-Ring	1
42	353-212	Fitting - Hydraulic 45° (Incl. Ref. #41)	1
43	51-0620	Tube - Hydraulic	1
44	83-7000	Hydraulic Cylinder Assembly	1
45	38-3400	Guard - Rubber	1
46	52-2480	Spacer	1
47	2412-70	Clamp - R	2
48	32144-11	Screw - Self Tapping	1
49	3256-78	Washer - Flat	1

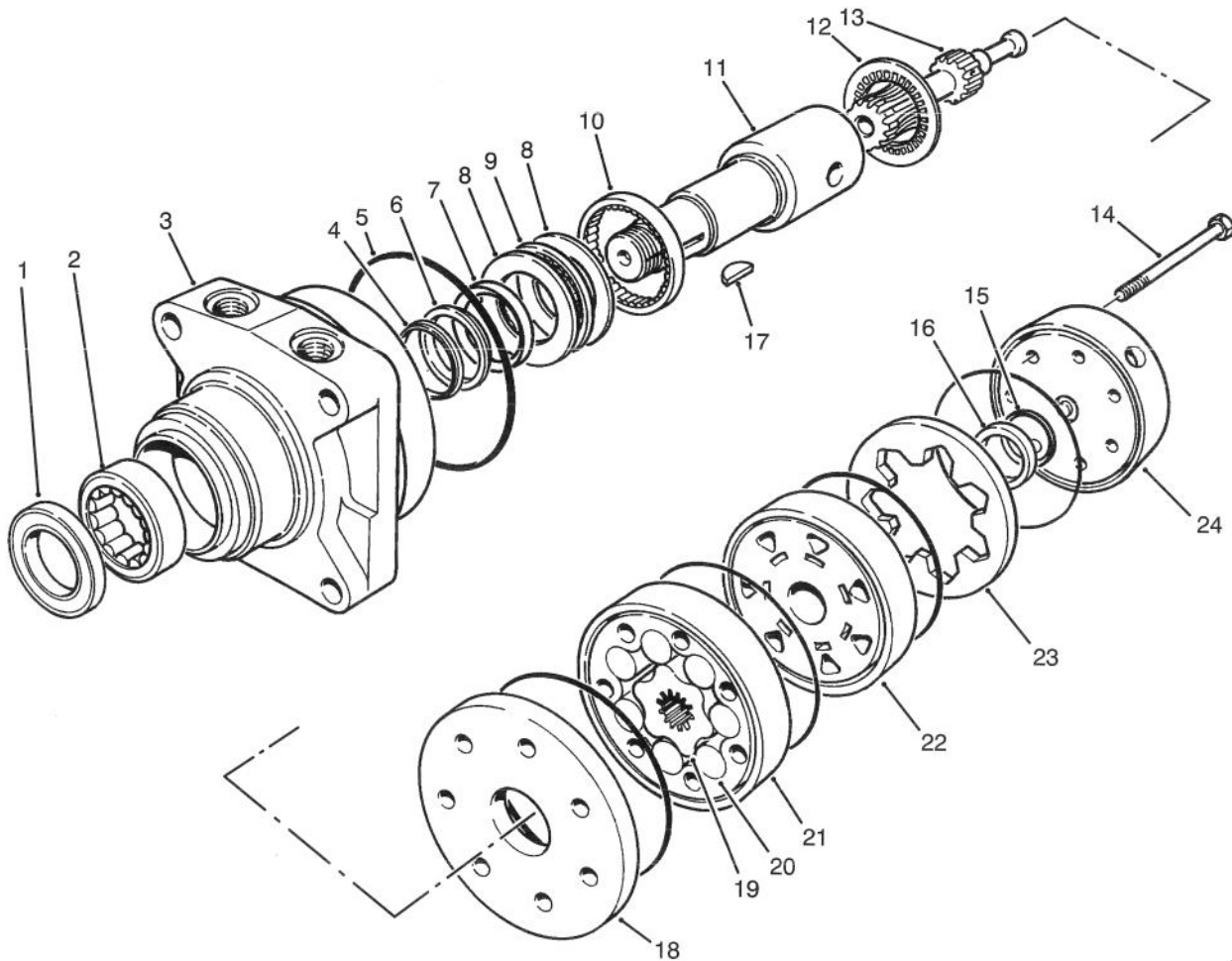


T-0982

## HYDRAULIC DRIVE MOTOR RIGHT REAR NO. 75-9840

Ref. No.	Part No.	Description	No. Used	Ref. No.	Part No.	Description	No. Used
1		Seal - Dirt & Water	1	22	76-0840	Manifold	1
2		Bearing	1	23		Ring - Commutator	1
3		Housing	1	24		Plug	2
4		Washer - Backup	1	25		O-Ring	2
5		Seal - Rings	5	26		Valve - Relief	1
6		Washer - Backup	1	27		Plug	1
7		Seal - Inner	1	28		O-Ring	1
8		Washer - Thrust	2	29	76-0890	Assembly (Incl. Ref. #24-25 & 30-32)	1
9		Bearing - Thrust	1	30		Spring	2
10		Bearing	1	31		Ball	1
11	76-0860	Shaft - Coupling	1	32		Valve - Shuttle	1
12	76-0850	Bearing - Thrust	1	*	76-0830	Rotor Set (Incl. Ref. #19-21)	1
13	76-0820	Link - Drive	1	*	76-0880	Assembly - Commutator (Incl. Ref. #15, 16 & 23)	1
14	76-1040	Screw - Cap Hex. Hd.	7	*	76-0800	Kit - Seal (Incl. Ref. #1, 4-7 & 15)	1
15		Seal - Commutator	1	*	76-0810	Assembly - Housing (Incl. Ref. #2, 3 & 8-10)	1
16		Commutator	1				
17	3257-42	Key - Woodruff	1				
18	76-0870	Plate - Wear	1				
19		Rotor	1				
20		Vane	7				
21		Stator	1				

\*Not Illustrated



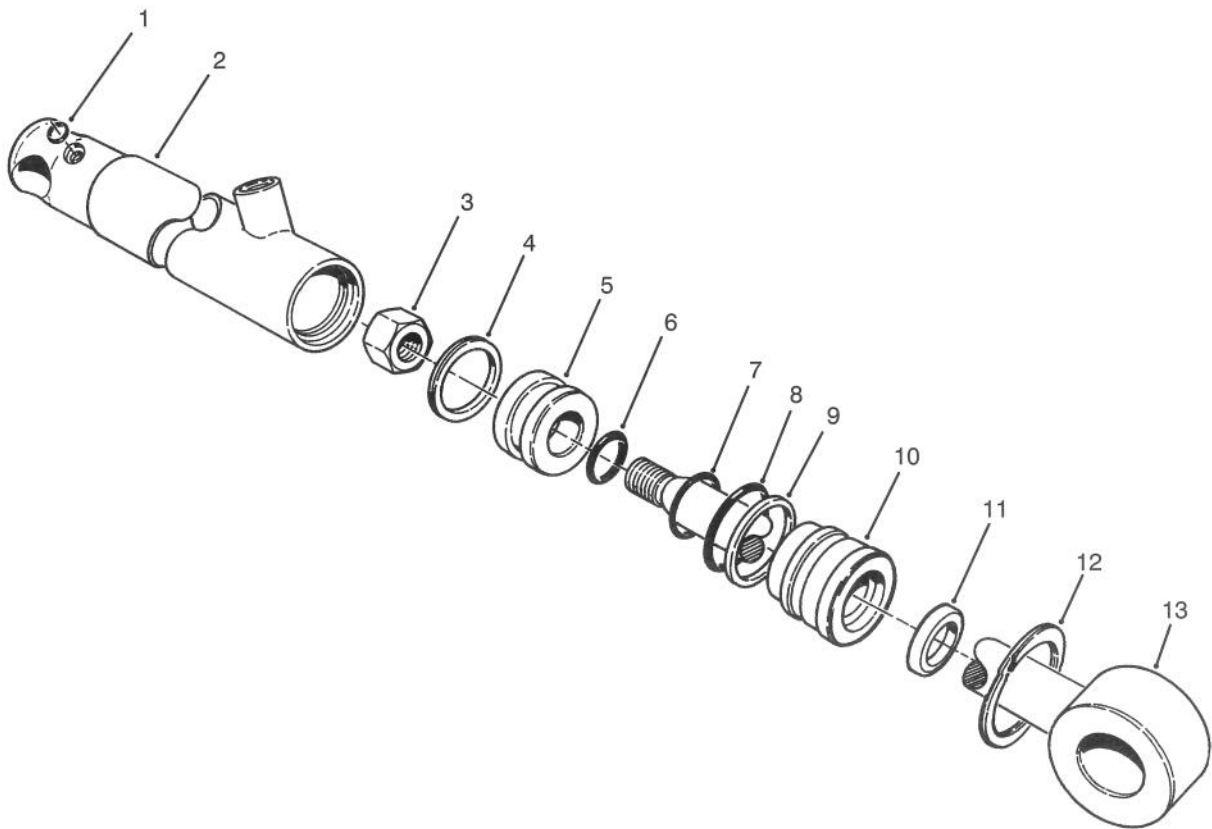
T-0983

### HYDRAULIC DRIVE MOTOR LEFT REAR NO. 75-9831

Ref. No.	Part No.	Description	No. Used
1		Seal - Dirt & Water	1
2		Bearing	1
3		Housing	1
4		Washer - Backup	1
5		Seal - Rings	5
6		Washer - Backup	1
7		Seal - Inner	1
8		Washer - Thrust	2
9		Bearing - Thrust	1
10		Bearing	1
11	76-0860	Shaft - Coupling	1
12	76-0850	Bearing - Thrust	1
13	76-0820	Link - Drive	7
14	76-1020	Screw - Cap Hex. Hd.	1
15		Seal - Commutator	1
16		Commutator	1

Ref. No.	Part No.	Description	No. Used
17	3257-42	Key - Woodruff	1
18	76-0870	Plate - Wear	1
19		Rotor	1
20		Vane	7
21		Stator	1
22	76-0840	Manifold	1
23		Ring - Commutator	1
24	76-0940	Assembly - Cover, End	1
*	76-0830	Rotor Set (Incl. Ref. #19-21)	1
*	76-0880	Assembly - Commutator (Incl. Ref. #15, 16 & 23)	1
*	76-0800	Kit - Seal (Incl. Ref. #1, 4-7 & 15)	1
*	76-0810	Assembly - Housing (Incl. Ref. #2, 3 & 8-10)	1

\*Not Illustrated



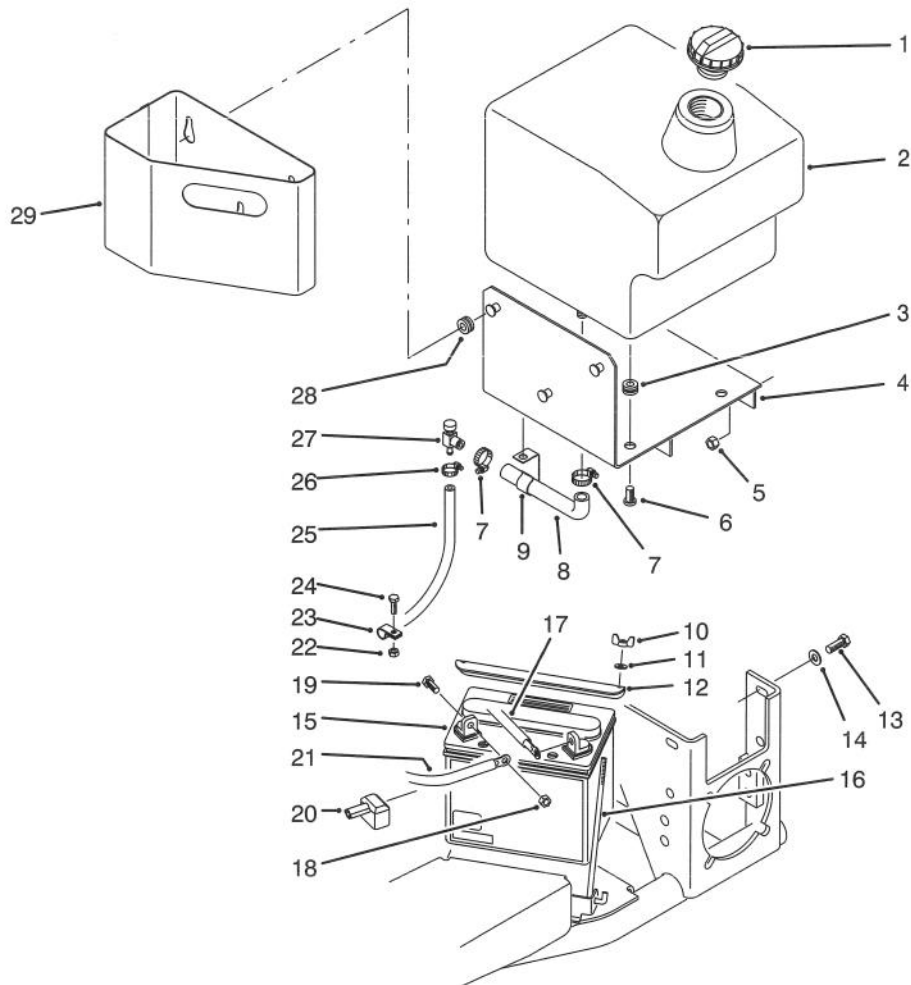
T-0217

## HYDRAULIC CYLINDER ASSEMBLY NO. 83-7000

Ref. No.	Part No.	Description	No. Used
1	237-78	O-Ring	2
2	43-5260	Barrel - w/Clevis & Ports	1
3	32152-10	Nut	1
4		Uniring	1
5	70-2780	Piston	1
6		O-Ring	1
7		Poly-Pack	1
8		O-Ring	1

Ref. No.	Part No.	Description	No. Used
9		Back-Up	1
10	70-2770	Head	1
11		Seal - Dust	1
12	43-5220	Ring - Retaining	1
13	43-5230	Shaft with Clevis	1
*	83-7250	Kit - Seal Repair (Incl. Ref. #4, 6-9 & 11)	1

\*Not Illustrated

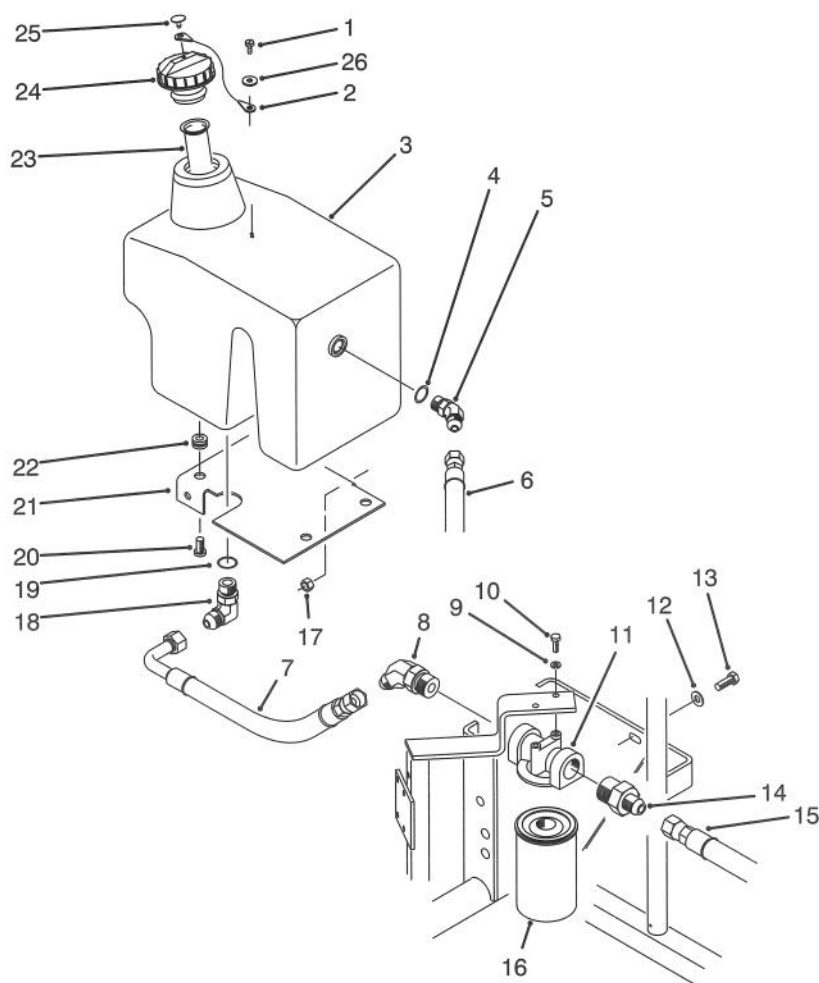


T-1755

## FUEL TANK ASSEMBLY

Ref. No.	Part No.	Description	No. Used
1	70-8631	Cap - Fuel	1
2	92-7186	Tank - Fuel	1
3	237-136	Grommet	4
4	84-8110	Base - Fuel Tank	1
5	3296-39	Nut - Lock	3
6	3250-36	Screw - Phillips Hd.	4
7	2412-36	Clamp - Hose	2
8	92-7152	Hose - Fuel	1
9	92-7160	Clip - Fuel Hose	1
10	32103-12	Nut - Wing	2
11	3256-22	Washer - Flat	2
12	92-5018	Clamp - Battery	1
13	323-6	Screw - Cap Hex. Hd.	3
14	3256-24	Washer - Flat	3
15	92-1678	Battery	1

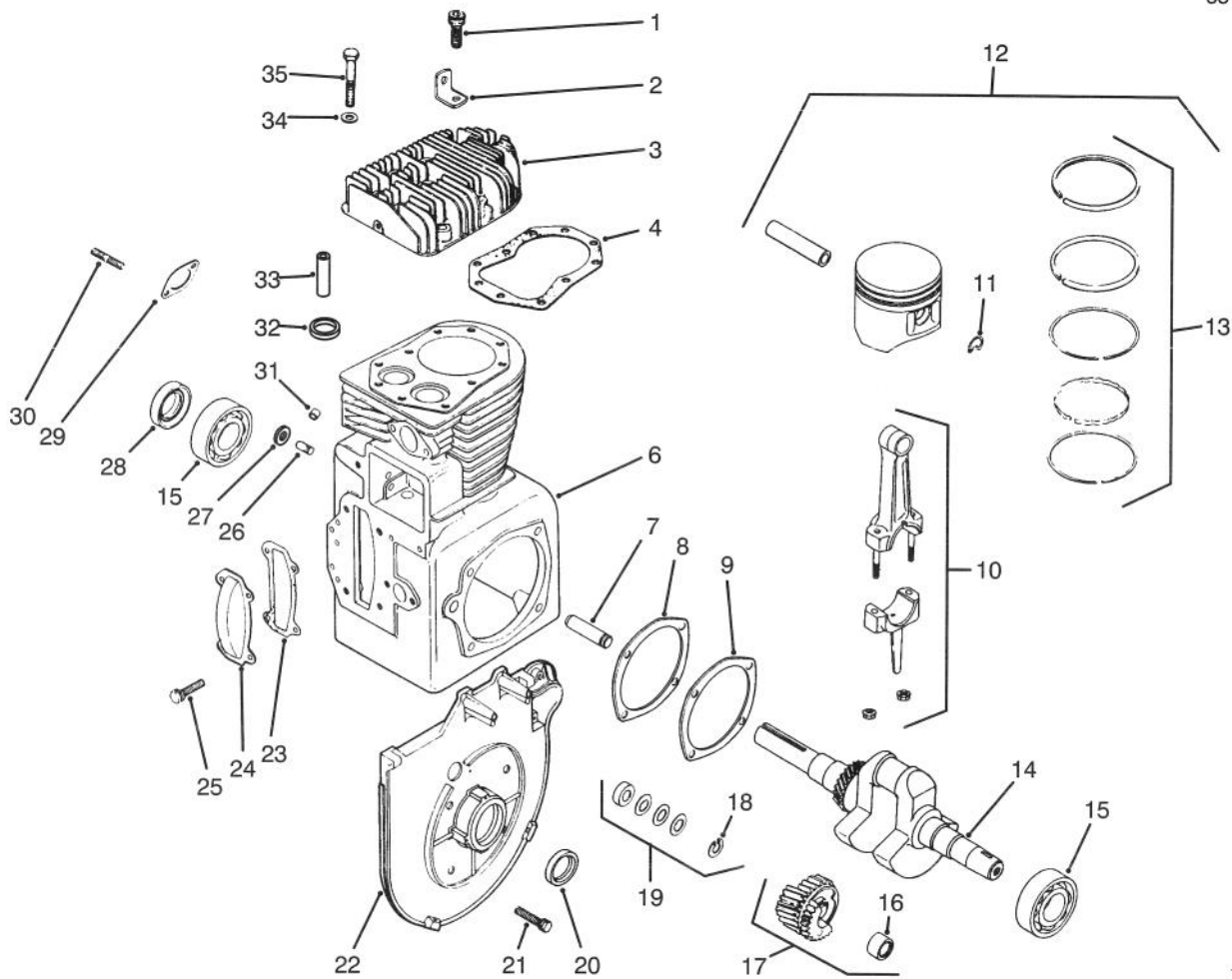
Ref. No.	Part No.	Description	No. Used
16	56-7720	Bolt - Battery	2
17	86-7450	Wire - Battery-Ground	1
18	3296-29	Nut - Lock	2
19	322-3	Screw - Cap Hex. Hd.	2
20	28-8080	Boot - Terminal	1
21	86-7570	Wire - Battery-Solenoid	1
22	3296-42	Nut - Lock	1
23	2412-73	Clamp - R	1
24	3274-69	Screw - Hex. Button Hd.	1
25	84-8050	Hose - Fuel	1
26	2412-108	Clamp - Hose	1
27	56-2520	Fitting - Fuel Shut-Off	1
28	240-9	Grommet	3
29	86-7640	Box - Litter	1



T-1851

## HYDRAULIC OIL RESERVOIR & FILTER ASSEMBLY

Ref. No.	Part No.	Description	No. Used	Ref. No.	Part No.	Description	No. Used
1	32105-13	Screw - Hex. Hd.	1	15	53-9470	Hose - Hydraulic	1
2	75-0540	Tether - Oil Cap	1	16	23-9740	Element - Hydraulic Filter	1
3	92-7187	Reservoir - Hydraulic Oil	1	17	3296-39	Nut - Lock	3
4	237-79	Seal - O-Ring	1	18	353-370	Fitting - Hydraulic 90° (Incl. Ref. #19)	1
5	353-379	Fitting - Hydraulic 45° (Incl. Ref. #4)	1	19	237-80	Seal - O-Ring	1
6	21-5360	Hose - Hydraulic	1	20	3250-36	Screw - Phillips Hd.	4
7	85-6570	Hose - Hydraulic	1	21	84-8160	Base - Hydraulic Tank	1
8	353-535	Fitting - Hydraulic 45°	1	22	237-136	Grommet	4
9	3253-3	Washer - Lock	2	23	92-1705	Screen - Filter	1
10	321-4	Screw - Cap Hex. Hd.	2	24	86-4870	Oil Cap Assembly (Incl. Ref. #2 & 25)	1
11	43-8590	Head - Hydraulic Filter	1	25	2410-73	Retainer - Tether	1
12	3256-24	Washer - Flat	3	26	3256-22	Washer - Flat	1
13	323-6	Screw - Cap Hex. Hd.	3				
14	353-506	Fitting - Hydraulic Straight	1				



T-1844

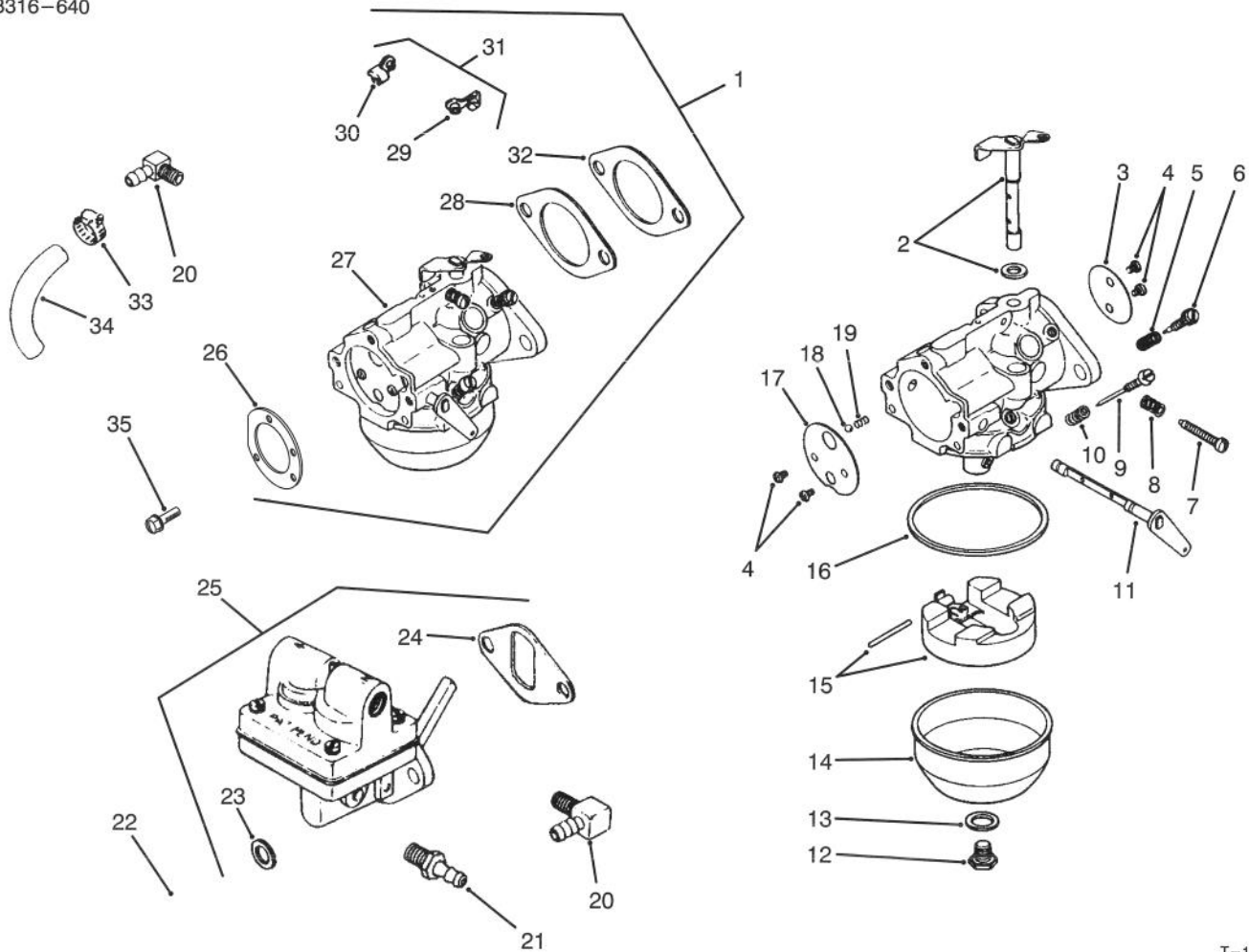
## ENGINE KOHLER MODEL M14S SPEC. NO. 601561

Ref. No.	Part No.	Description	No. Used
1	47 086 17	Screw - Hex. Soc. Hd.	1
2	47 445 02	Strap - Lifting	1
3	47 015 06	Head - Cylinder	1
4	47 041 15	Gasket - Head	1
6	47 782 92	Short Block Assembly	1
7	236559	Shaft - Gear Stub	2
8	47 422 05	Gasket - Shim	A/R
9	47 041 09	Gasket - Plate, Bearing	1
10	45 067 24	Rod - Connecting (Std.)	1
	45 067 25	Rod - Connecting (.010)	1
11	47 018 01	Retainer - Piston Pin	2
12	47 874 21	Piston w/Ring Set (Std.)	1
	47 874 22	Piston w/Ring Set (.003)	1
	47 874 23	Piston w/Ring Set (.010)	1
	47 874 24	Piston w/Ring Set (.020)	1
	47 874 25	Piston w/Ring Set (.030)	1
13	47 108 05	Ring Set - (Std. & .003)	1
	47 108 06	Ring Set - (.010)	1
	47 108 07	Ring Set - (.020)	1
	47 108 08	Ring Set - (.030)	1
14	45 142 36	Crankshaft Kit	1
15	235376	Bearing - Ball	2
16	47 030 01	Bearing - Needle	2

Ref. No.	Part No.	Description	No. Used
17	45 043 03	Assembly - Gear (Incl. Ref. #16)	2
18	X-269-34	Retainer	2
19	47 755 01	Kit - Spacer (Incl. Ref. #18)	1
20	47 032 06	Seal - Front, Oil	1
21	X-159-2	Screw - Hex. Cap	4
22	47 146 11	Plate - Bearing	1
23	235025	Gasket - Cover	1
24	235026	Cover - Camshaft	1
25	X-123-6	Screw - Hex. Cap	4
26	235125-S	Shaft - Gear, Governor	1
27	X-230-11	Plug - Expansion	1
28	47 032 07	Seal - Rear, Oil	1
29	235122	Gasket - Flange, Exhaust	2
30	41 072 19	Stud	2
31	234866	Bearing - Shaft, Governor	1
32	230265	Insert - Valve, Exhaust	1
33	235007-S	Guide - Valve	2
34	270889	Washer - Plain	9
35	270158	Screw - Hex. Cap	8
*	47 755 27	Gasket Set w/Seals	1
*	47 004 02	Gasket Set w/o Seals	1

\*Not Illustrated





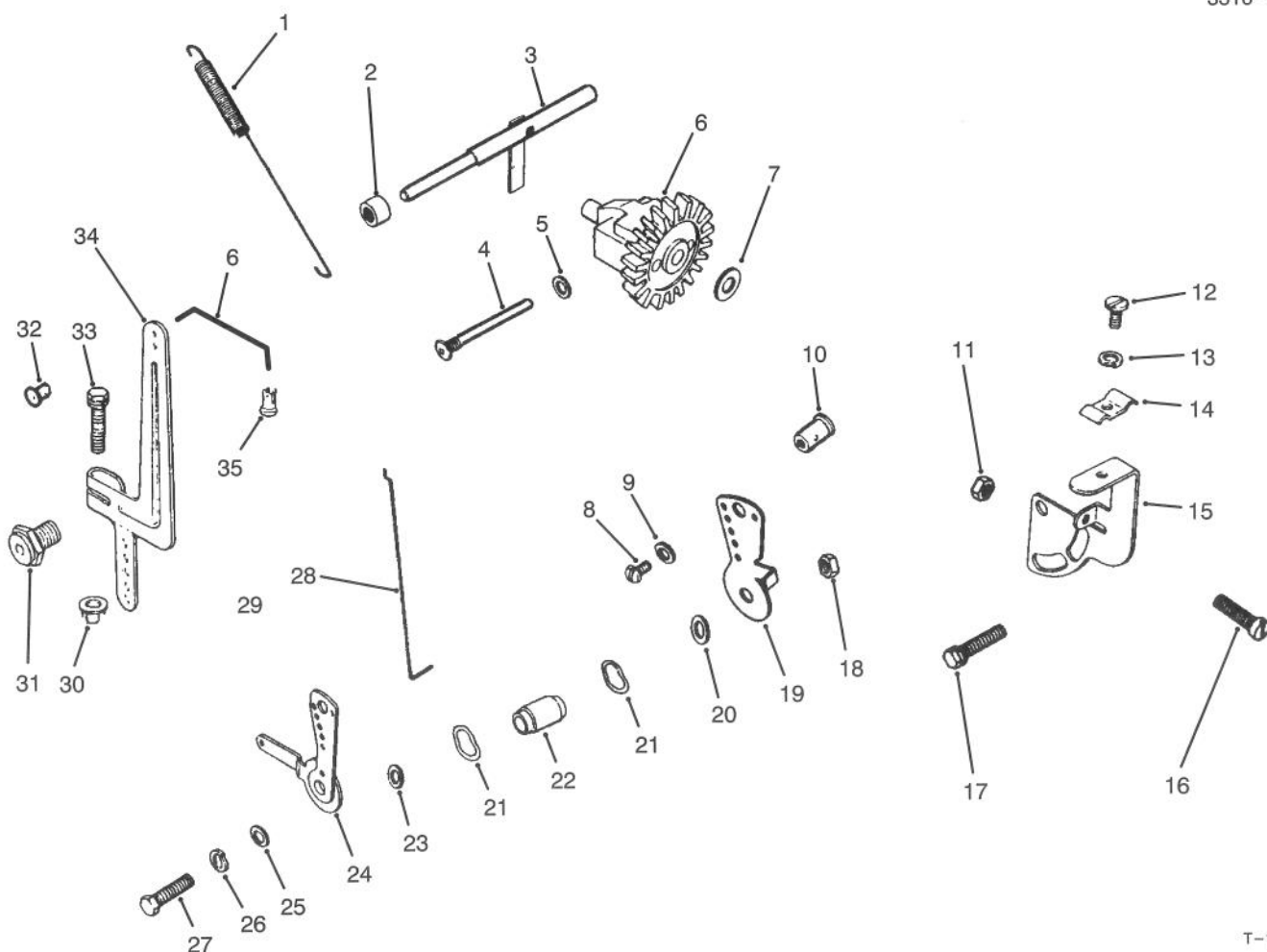
T-1846

## ENGINE KOHLER MODEL M14S SPEC. NO. 601561 (Cont.)

Ref. No.	Part No.	Description	No. Used
1	47 853 29	Kit - Adj. Jet w/Linkage (Incl. Ref. #26-31)	1
2	47 144 36	Shaft - W/Seal	1
3	47 146 10	Plate - Choke	1
4	25 086 27	Screw - Throttle & Choke	4
5	25 089 02	Spring - Idle Fuel	1
6	25 368 01	Needle - Idle Fuel Adj.	1
7	25 086 26	Screw - Idle Speed Adj.	1
8	25 089 04	Spring - Idle Speed	1
9	25 368 03	Needle - Main Fuel	1
10	25 089 02	Spring - Main Fuel	1
11	47 090 38	Lever - Choke	1
12	25 100 05	Screw - Bowl Retainer	1
13	25 041 03	Gasket - Bowl Ret. Screw	1
14	25 104 01	Bowl - Fuel	1
15	25 757 09	Kit - Float	1
16	25 041 04	Gasket - Bowl	1
17	25 146 09	Plate - Throttle	1
18	25 194 01	Ball - Choke Friction	1
19	25 089 03	Spring - Choke Friction	1

Ref. No.	Part No.	Description	No. Used
20	25 155 02	Connector - 90°	2
21	X-380-1	Connector - Straight	1
22	X-174-2	Screw - F.H.M.	2
23	X-25-63	Washer - Plain	1
24	25 041 09	Gasket - Pump, Fuel	1
25	47 559 04	Fuel Pump Assembly (Incl. Ref. #23-24)	1
26	45 041 07	Gasket - Air Cleaner	1
27	47 053 96	Carburetor (Incl. Ref. #3-19)	1
28	47 049 01	Gasket - Carburetor	1
29	47 158 07	Bushing - Linkage Retain.	1
30	25 158 11	Bushing - Linkage Retain.	1
31	47 079 10	Linkage - Carburetor	1
32	271030	Gasket - Carburetor	1
33	X-426-9	Clamp - Hose	2
34	25 353 08	Line - Fuel	1
35	X-770-1	Screw - Slotted Hd.	2
*	25 757 11	Carburetor Repair Kit	1
*	25 757 23	Kit - Bowl Vent Baffle	1

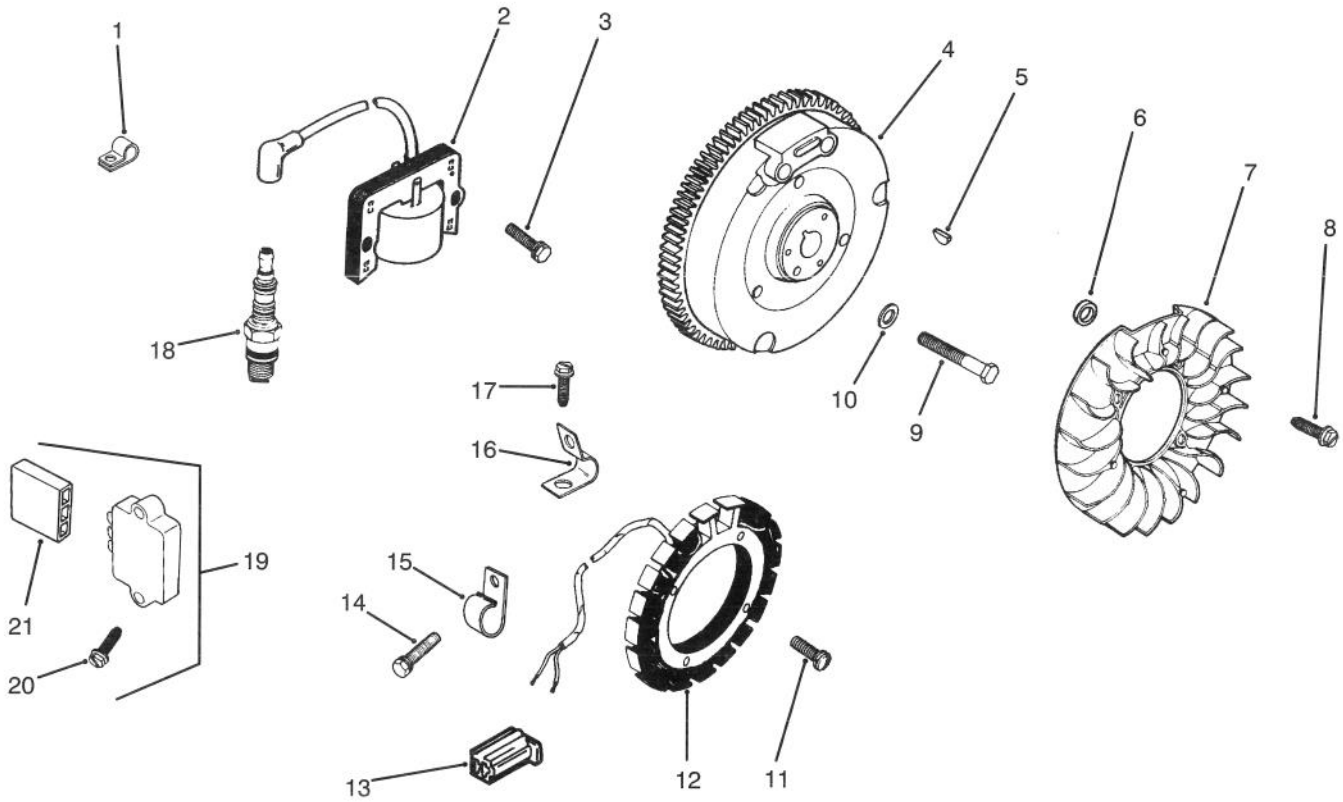
\*Not Illustrated



T-1834

## ENGINE KOHLER MODEL M14S SPEC. NO. 601561 (Cont.)

Ref. No.	Part No.	Description	No. Used	Ref. No.	Part No.	Description	No. Used
1	47 091 01	Spring – Governor	1	19	47 090 10	Lever – Control, Throttle	1
2	X-400-80	Spacer	1	20	X-25-72	Washer – Plain	1
3	A-235256-S	Kit – Governor Shaft	1	21	275690	Washer – Tension	2
4	231355	Pin – Governor Stop	1	22	47 112 02	Spacer	1
5	25 468 01	Washer – Plain	1	23	X-25-82	Washer – Plain	1
6	A-235743-S	Kit – Governor Gear	1	24	47 090 06	Lever – Control, Choke	1
7	237022	Washer – Thrust	1	25	X-25-63	Washer – Plain	1
8	X-51-8	Screw – Slotted Pan Hd.	1	26	X-20-1	Washer – Lock	1
9	X-25-102	Washer – Plain	1	27	X-5-26	Screw – Hex. Cap	1
10	48 755 10	Kit – Clamp	1	28	47 079 01	Linkage – Choke	1
11	X-72-4	Nut – Hex.	1	29	47 079 10	Linkage – Carburetor	1
12	X-67-51	Screw – Hex. Washer Hd.	1	30	X-799-1	Palnut	1
13	25 468 04	Washer – Plain	1	31	235476	Bushing – Governor	1
14	47 237 02	Clamp	1	32	47 158 07	Bushing – Retaining	1
15	47 126 09	Bracket	1	33	X-766-1	Screw – Hex. Hd.	1
16	232556	Screw – Lever, Throttle	1	34	47 090 20	Lever – Governor	1
17	X-132-6	Screw – Hex. Hd.	1	35	25 158 11	Bushing – Retaining	1
18	X-76-2	Nut – Hex.	1				



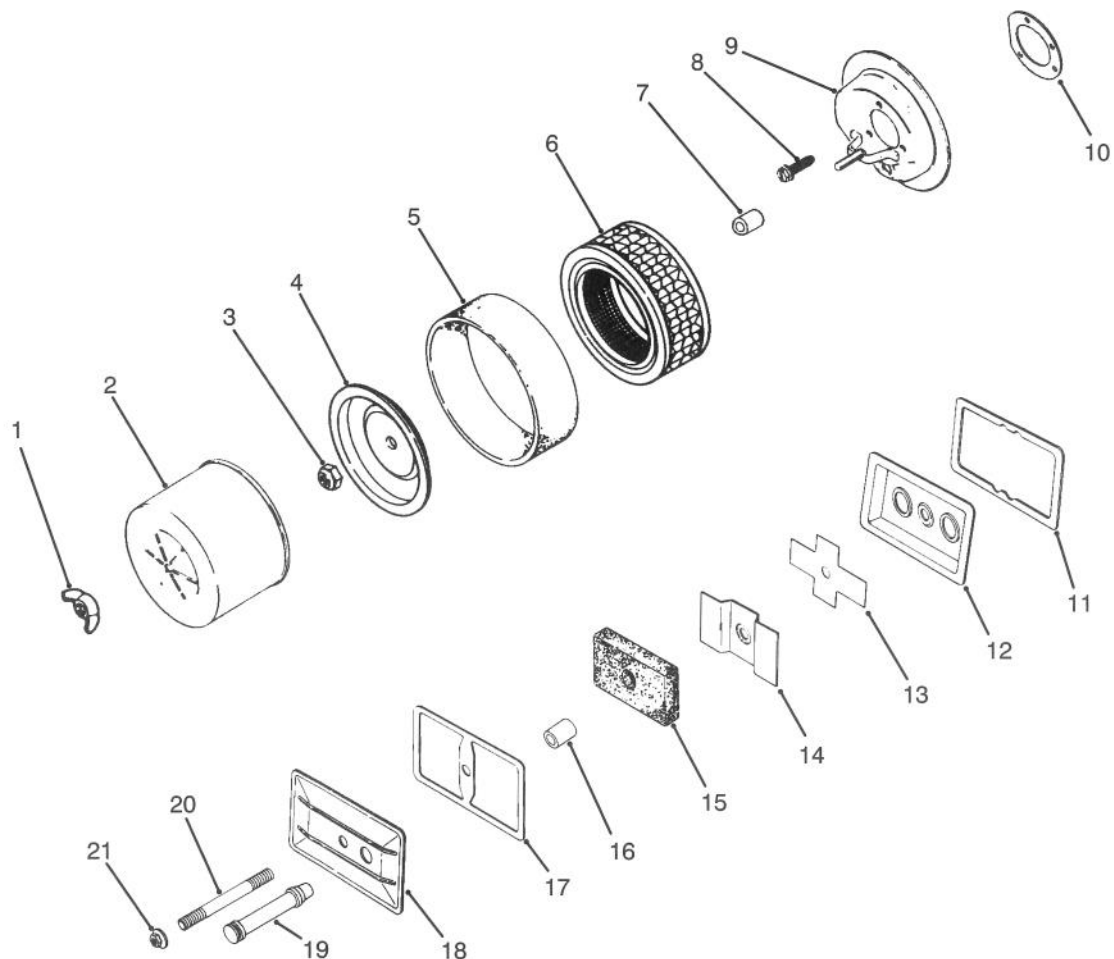
T-1835

## ENGINE KOHLER MODEL M14S SPEC. NO. 601561 (Cont.)

Ref. No.	Part No.	Description	No. Used
1	210281	Clip - Lead, Hi-Tension	1
2	47 584 02	Module - Ignition	1
3	X-67-51	Screw - Hex.	2
4	47 025 53	Flywheel	1
5	X-46-3	Key - Woodruff	1
6	25 112 04	Spacer	4
7	25 157 01	Fan	1
8	25 086 21	Screw - Hex. Washer Hd.	4
9	25 086 24	Screw - Hex. Mach.	1
10	52 468 15	Washer - Plain	1
11	X-67-51	Screw - Hex. Washer Hd.	4
12	237878	Kit - Stator (Incl. Ref. #17)	1

Ref. No.	Part No.	Description	No. Used
13	41 155 03	Connector - Male	1
14	X-132-6	Screw - Hex. Hd.	1
15	235173	Clip	1
16	X-728-1	Clip - Lead	1
17	X-67-59	Screw - Hex. Washer Hd.	1
18	23 132 02	Plug - Spark	1
19	25 755 03	Kit - Rectifier (Incl. Ref. #20)	1
20	X-132-5	Screw - Hex. Hd.s	2
21	236602	Connector - Female	1
*	47 518 43	Lead - White w/Diode	1
*	47 518 46	Lead - Violet, Rectifier	1

\*Not Illustrated

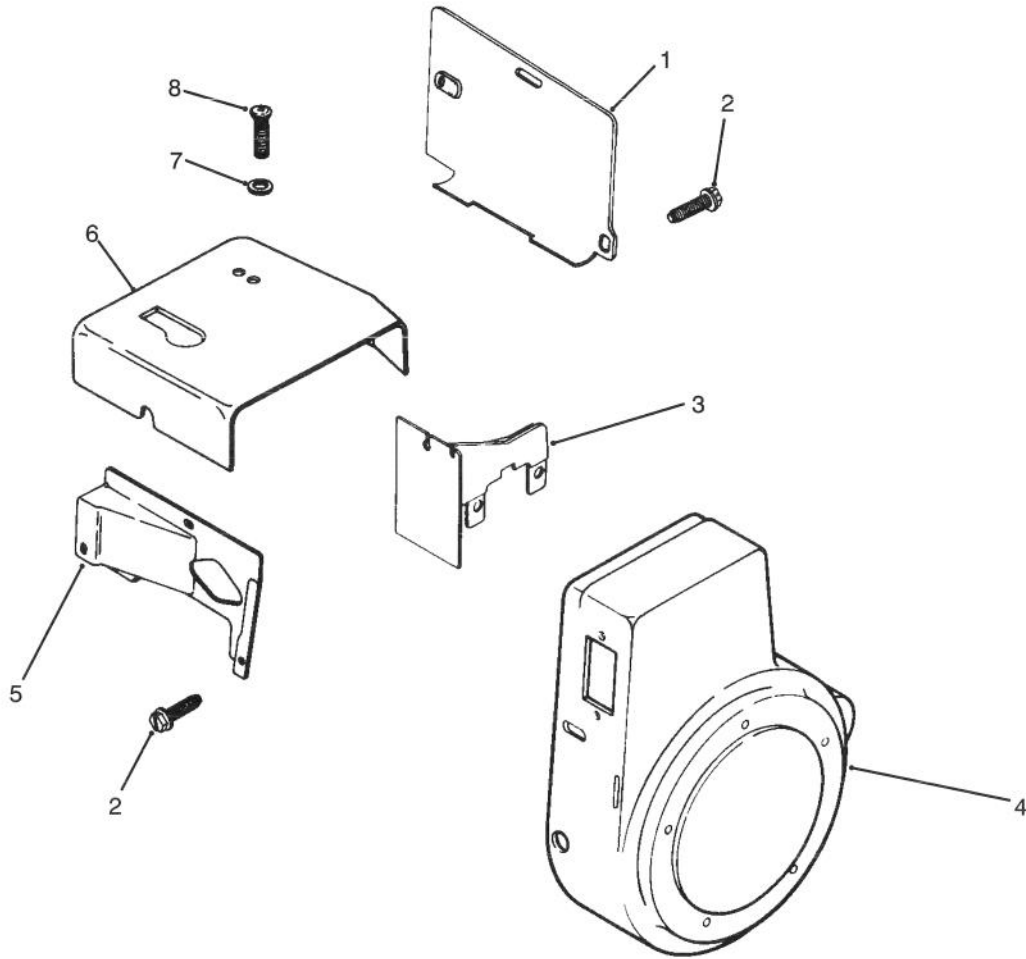


T-1836

## ENGINE KOHLER MODEL M14S SPEC. NO. 601561 (Cont.)

Ref. No.	Part No.	Description	No. Used	Ref. No.	Part No.	Description	No. Used
1	X-276-7	Nut - Wing	1	12	235631	Plate - Breather	1
2	45 082 01	Cover - Air Cleaner	1	13	235047	Reed - Breather	1
3	41 100 04	Nut - Jam	1	14	270146	Baffle - Breather	1
4	52 082 04	Cover - Element	1	15	47 050 01	Filter - Breather	1
5	45 083 01	Element - Precleaner	1	16	231032	Seal - Breather	1
6	45 083 02	Element	1	17	275144	Gasket - Valve Cover	1
7	231032	Seal	1	18	47 096 01	Cover - Breather Plate	1
8	X-67-65	Screw - Hex. Washer Hd.	3	19	47 326 03	Hose - Breather	1
9	47 094 20	Base - Air Cleaner	1	20	275220	Stud	1
10	45 041 07	Gasket - Air Cleaner	1	21	X-799-1	Palnut	1
11	235048	Gasket - Breather Plate	1	*	25 113 07	Decal - Air Cleaner	1

\*Not Illustrated



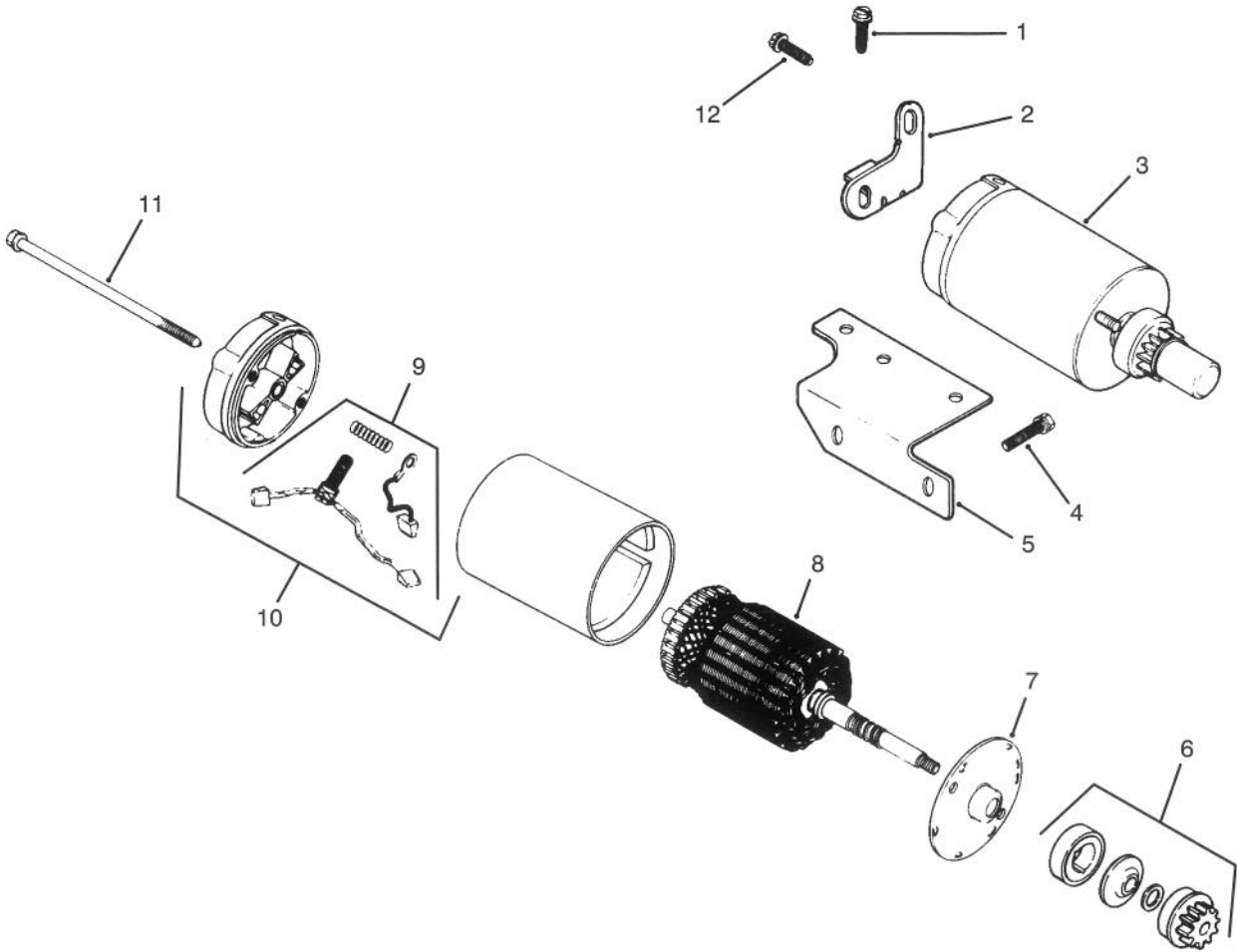
T-1837

## ENGINE KOHLER MODEL M14S SPEC. NO. 601561 (Cont.)

Ref. No.	Part No.	Description	No. Used
1	47 063 10	Baffle - Cylinder	1
2	52 086 11	Screw - Hex. Washer Hd.	6
3	47 063 07	Baffle - Inner	1
4	47 027 42	Housing - Blower	1
5	47 063 11	Baffle - Side Air	1

Ref. No.	Part No.	Description	No. Used
6	45 063 08	Baffle - Head	1
7	X-25-53	Washer - Plain	1
8	47 086 08	Screw - Pozidriv T.H.	1
*	47 113 36	Decal - Horsepower	1

\*Not Illustrated



T-1838

## ENGINE KOHLER MODEL M14S SPEC. NO. 601561 (Cont.)

Ref. No.	Part No.	Description	No. Used
1	X-67-83	Screw - Hex. Washer Hd.	1
2	45 126 17	Brace - Tail	1
3	41 098 06	Starter Assembly (Incl. Ref. #6-11)	1
4	X-159-2	Screw - Hex. Cap	2
5	47 126 29	Bracket - Solenoid	1
6	41 755 33	Kit - Drive	1
7	41 081 05	Cap - End, Drive	1

Ref. No.	Part No.	Description	No. Used
8	45 170 03	Armature	1
9	82 755 15	Kit - Brush	1
10	41 227 05	Cap/Commutator Assy. (Incl. Ref. #9)	1
11	41 086 19	Bolt	2
12	X-67-62	Screw - Hex. Washer Hd.	1
*	25 450 03	Tag - Caution	1

\*Not Illustrated

# TORO PART NUMBER INDEX

Part No.	Description	Pg. Ref. No. No. Qty.	Part No.	Description	Pg. Ref. No. No. Qty.
10-6830	Stud - Drive	16 20 8	26-3790	Nut - Lock	16 24 2
10-6830	Stud - Drive	2 35 4	27-1960	Hub - Engine	8 29 1
10-7070	Key - Square	8 28 1	27-5170	Seat Assembly	6 1 1
16-3989	Engine Assembly	7 31 1	27-6600	Spacer - Coupler	8 25 4
17-4710	Hub - Wheel	16 21 2	28-3670	Shaft - Trunion	9 12 1
17-4710	Hub - Wheel	2 28 1	28-4210	Solenoid	4 32 1
18-1520	Filter - Fuel	7 18 1	28-8080	Boot - Terminal	20 20 1
18-6290	Axle - Front	2 26 1	29-6120	PLate - Pump	13 10 1
18-6320	Washer - Steering	2 40 3	29-6150	Spring - Leaf	13 15 1
18-6380	Pin - Steering Adjustment	2 38 2	29-6162	Switch - Neutral	13 4 1
18-6700	Tube - Hydraulic	16 1 1	29-6170	Leaf Spring Assembly	13 14 1
18-6710	Tube - Hydraulic	16 12 1	37-8030	Mount - Pump	8 32 1
18-6720	Tube - Hydraulic	16 13 1	38-0860	Spring - Compression	12 11 1
18-6730	Tube - Hydraulic	16 2 1	38-3400	Guard - Rubber	1 13 4
18-7160	Pin - Cylinder	16 35 1	38-3400	Guard - Rubber	16 45 1
18-7310	Pin - Cylinder	16 11 1	39-9600	Clamp - Mounting	4 18 1
18-8000	Mount - Rubber	7 26 3	43-1730	Body	15 7 1
21-5360	Hose - Hydraulic	21 6 1	43-1950	Lift Valve Assembly	14 20 1
21-5360	Hydraulic Hose Assembly	8 9 1	43-5220	Ring - Retaining	19 12 1
21-5370	Hose - Hydraulic	16 3 2	43-5230	Shaft with Clevis	19 13 1
21-5370	Hydraulic Hose Assembly	8 10 2	43-5260	Barrel - w/Clevis & Ports	19 2 1
22-4670	Hose - Hydraulic	16 6 2	43-8590	Head - Hydraulic Filter	21 11 1
22-4670	Hydraulic Hose Assembly	14 13 2	44-2230	Coupling - Rubber	8 30 1
22-8330	Plug	15 1 2	46-4810	Rim - Wheel	2 16 1
22-8340	Spring	15 3 2	46-4810	Rim - Wheel	16 25 2
22-8350	Ball	15 4 2	46-8400	Bearing - Needle	9 42 1
22-8360	Pin - Cam	15 6 2	46-8560	Screw - Hex. Flange Hd.	1 18 10
22-8370	Seat - Check Valve	15 5 2	46-8560	Screw - Hex. Flange Hd.	8 36 3
22-8380	Retainer - Spring	15 10 2	46-8810	Stop - Leaf Spring	13 6 1
22-8410	Spring	15 11 1	49-2040	Screw - Self Tapping	13 12 3
22-8420	Spool	15 8 1	49-7840	Kit - Shim Pack	9 16 2
22-8480	Ring - Spool Retaining	15 13 1	49-8470	Kit - Shim-Pack	10 53 2
22-8490	Ring - Retaining	15 14 1	49-8480	Shaft - Trunion	9 28 1
22-8500	O-Ring	15 9 2	49-8510	Kit - Charge Relief Valve	10 * 1
23-0660	Ignition Switch Assembly	4 17 1	49-8520	Kit - Implement Relief	10 * 1
23-3030	Spacer	15 12 1	49-9500	Base - Engine	7 28 1
23-9740	Element - Hydraulic Filter	21 16 1	49-9550	Pipe - Exhaust	7 33 1
24-0760	Cooler - Oil	1 2 1	49-9580	Bracket - Muffler	7 8 1
25-2380	Plate - Thrust	9 39 1	49-9590	Shield - Rubber	1 21 1
25-2390	Plate - Valve	9 40 1	49-9600	Hub - Pump	8 31 1
25-2400	Gasket	9 43 1	49-9970	Hose - Hydraulic	8 22 1
25-2430	Pin - Straight	9 41 1	49-9980	Retainer - Rubber Shield	1 25 1
25-2450	Plate - Swash	9 37 1	51-0590	Hose - Hydraulic	14 16 1
25-2460	Plug	9 14 2	51-0590	Hose - Hydraulic	8 19 1
25-2480	Spring - Charge Relief	9 32 1	51-0600	Hose - Hydraulic	16 31 2
25-2490	Ball - Check Valve	9 47 2	51-0600	Hose - Hydraulic	2 31 2
25-2510	Washer	9 11 2	51-0620	Tube - Hydraulic	14 17 1
25-2530	Pin - Straight	9 26 1	51-0620	Tube - Hydraulic	16 43 1
25-2570	Spring - Relief Valve	9 17 1	51-0670	Hose - Fuel	7 19 1
25-2600	Kit - Cylinder Block	9 5 1	51-0700	Muffler	7 2 1
25-2630	Ring	9 3 1	51-0780	Slider - Seat	6 14 1
25-2640	Spring - Valve Check	9 48 2	51-0790	Adjuster - Seat	6 15 1
25-2650	Plug - Check Valve	9 50 2	51-3150	Shim - Spring	13 13 1
25-2680	Assembly - Gerator	9 25 1	51-3160	Trim	1 16 1
25-2690	Housing - Charge Pump	9 21 1	51-3161	Trim	1 20 1
25-3180	Kit - Check Valve	10 * 1	52-2480	Spacer	16 46 1
25-3210	Seal - Lip	9 10 2	53-9470	Hose - Hydraulic	8 14 1
25-3220	Kit - Charge Pump	10 * 1	53-9470	Hose - Hydraulic	21 15 1
26-2810	Lever - Pump	13 20 1	54-7890	Kit - Housing	9 8 1
26-2950	Standoff - Wire	8 12 1	55-4450	Bumper - Rubber	14 22 1
26-3790	Nut - Hex.	2 27 1	56-2520	Fitting - Fuel Shut-Off	20 27 1

\*Not Illustrated

# TORO PART NUMBER INDEX (Cont.)

3316-640

Part No.	Description	Pg. No.	Ref. No.	Qty.	Part No.	Description	Pg. No.	Ref. No.	Qty.
56-7720	Bolt - Battery	20	16	2	83-7260	Cone - Relief Valve	9	18	1
56-7976	Clamp - Tube	16	29	2	83-7260	Cone - Relief Valve	9	33	1
61-3230	Spacer - Fuel Filter	7	13	1	84-8050	Hose - Fuel	7	14	1
63-8360	Key - Ignition	4	8	2	84-8050	Hose - Fuel	20	25	1
63-8440	Decal - Hot Surface	14	3	1	84-8110	Base - Fuel Tank	20	4	1
66-2950	Hourmeter Assembly	4	3	1	84-8160	Base - Hydraulic Tank	21	21	1
67-1690	Fitting - Fuel 90°	7	30	1	84-8170	Shroud - Lift Valve	14	2	1
67-8020	Shaft - Pump	9	6	1	85-6570	Hose - Hydraulic	21	7	1
67-8050	Bearing - Needle	9	22	1	85-6610	Shaft - Steering Upper	2	7	1
67-8060	Seal - Lip	9	23	1	85-6680	Shield - Engine	1	8	1
69-9760	Plate - Cover	16	32	1	85-8290	Tire	2	25	1
70-2770	Head	19	10	1	85-8290	Tire	16	26	2
70-2780	Piston	19	5	1	85-8900	Lever - Lift	14	24	1
70-8631	Cap - Fuel	20	1	1	85-8940	Flange - Bearing Lube	2	21	1
74-0340	Cushion - Rubber	6	12	2	85-8950	Flange - Bearing	2	18	1
74-0720	Tube - Manual	6	2	1	85-8960	Spacer	12	4	1
74-9100	Pad - Forward Pedal	12	16	1	85-9180	Sprocket	2	12	1
74-9110	Pad - Reverse Pedal	12	5	1	85-9200	Knuckle - Steering	2	1	1
75-0540	Tether - Oil Cap	21	2	1	85-9210	Shaft - Steering Lower	2	2	1
75-9830	Hydraulic Motor Assembly	2	32	1	86-4870	Oil Cap Assembly	21	24	1
75-9831	Hydraulic Motor Assembly	16	28	1	86-7440	Wire - Solenoid-Starter	7	5	1
75-9840	Hydraulic Motor Assembly	16	40	1	86-7440	Wire - Solenoid-Starter	4	31	1
76-0800	Kit - Seal	17	*	1	86-7440	Wire Assembly	5	2	1
76-0800	Kit - Seal	18	*	1	86-7450	Wire - Battery-Ground	7	11	1
76-0800	Kit - Seal	3	*	1	86-7450	Wire - Battery-Ground	20	17	1
76-0810	Assembly - Housing	17	*	1	86-7450	Wire Assembly	5	4	1
76-0810	Assembly - Housing	18	*	1	86-7570	Cable - Battery Pos.	5	3	1
76-0810	Assembly - Housing	3	*	1	86-7570	Wire - Battery-Solenoid	20	21	1
76-0820	Link - Drive	17	13	1	86-7570	Wire - Battery-Solenoid	4	30	1
76-0820	Link - Drive	18	13	7	86-7610	Plate - Seat	6	16	1
76-0830	Rotor Set	17	*	1	86-7640	Box - Litter	20	29	1
76-0830	Rotor Set	18	*	1	88-8210	Plug - Standard Thread	9	19	1
76-0840	Manifold	17	22	1	88-8220	Valve - By-Pass	9	4	1
76-0840	Manifold	18	22	1	88-8350	Tab - Bearing	2	14	1
76-0840	Manifold	3	22	1	88-8480	Bracket - Pivot	14	12	1
76-0850	Bearing - Thrust	17	12	1	92-1678	Battery	20	15	1
76-0850	Bearing - Thrust	18	12	1	92-1705	Screen - Filter	21	23	1
76-0850	Bearing - Thrust	3	12	1	92-1706	Decal - Operating	1	7	1
76-0860	Shaft - Coupling	17	11	1	92-2343	Pedal - Traction	12	6	1
76-0860	Shaft - Coupling	18	11	1	92-2344	Stud - Adjuster	12	12	1
76-0860	Shaft - Coupling	3	11	1	92-5000	Frame Assembly	2	44	1
76-0870	Plate - Wear	17	18	1	92-5018	Clamp - Battery	20	12	1
76-0870	Plate - Wear	18	18	1	92-5024	Panel - Dash	4	29	1
76-0870	Plate - Wear	3	18	1	92-5029	Shield - Blower	1	17	1
76-0880	Assembly - Commutator	17	*	1	92-5035	Steering Shaft Assembly	2	9	1
76-0880	Assembly - Commutator	18	*	1	92-5037	Shroud - Dash	1	1	1
76-0880	Assembly - Commutator	3	*	1	92-5039	Chain - Steering	2	48	1
76-0890	Assembly	17	29	1	92-5046	Harness - Wire	5	1	1
76-0930	Link - Drive	3	13	7	92-5046	Wire Harness Assembly	4	38	1
76-0940	Assembly - Cover, End	18	24	1	92-5048	Shield - Cooler	1	23	1
76-0940	Assembly - Cover, End	3	24	1	92-7150	Tube - Hydraulic	1	9	1
76-0950	Rotor Set	3	*	1	92-7151	Tube - Hydraulic	14	4	1
76-1020	Screw - Cap Hex. Hd.	18	14	1	92-7151	Tube - Hydraulic	1	6	1
76-1030	Screw - Cap Hex. Hd.	3	14	1	92-7152	Hose - Fuel	20	8	1
76-1040	Screw - Cap Hex. Hd.	17	14	7	92-7153	Rod - Traction	12	10	1
76-1420	Wheel - Steering	2	5	1	92-7155	Choke Control Assembly	4	7	1
76-8750	Plate - Warning	8	2	1	92-7156	Control - Throttle	4	22	1
80-1910	Decal - Lift	14	1	1	92-7157	Decal - Dash	4	14	1
83-0820	Ammeter Assembly	4	15	1	92-7158	Tread - Foot RH	1	29	1
83-7000	Hydraulic Cylinder Assembly	16	44	1	92-7159	Tread - Foot LH	1	14	1
83-7250	Kit - Seal Repair	19	*	1	92-7160	Clip - Fuel Hose	20	9	1

\*Not Illustrated

# TORO PART NUMBER INDEX (Cont.)

Part No.	Description	Pg. Ref. No. No. Qty.	Part No.	Description	Pg. Ref. No. No. Qty.
92-7170	Base - Seat	6 13 1	2412-108	Clamp - Hose	20 26 1
92-7180	Fork - Steering	2 13 1	2412-133	Clamp - R	6 5 2
92-7183	Tube - Hydraulic	16 38 1	251-8	Bearing - Ball	9 35 1
92-7183	Tube - Hydraulic	16 39 1	251-259	Bearing - Ball	13 18 1
92-7186	Tank - Fuel	20 2 1	251-352	Bearing Assembly	2 19 2
92-7187	Reservoir - Hydraulic Oil	21 3 1	252-82	Bearing - Needle	9 9 2
92-7188	Decal - INFIELD PRO 3000	1 * 2	254-61	Cup - Bearing	2 42 2
92-8776	Plug Assembly	9 51 2	254-70	Cone - Bearing	2 41 2
92-8777	Seal - O-Ring	9 52 2	256-185	Bushing - Sleeve	2 8 2
92-8790	Hydraulic Pump Assembly	8 7 1	256-219	Bushing - Flange	12 3 2
92-8960	Decal - SAND PRO 3000	1 24 2	256-287	Bushing - Flange	2 3 2
92-8962	Panel - Front	1 30 1	2710-11	Link - Connecting	2 39 2
92-8963	Mount - Cover	8 35 1	2710-20	Offset Link Assembly	14 10 1
92-8965	Decal - Service	6 11 1	285-17	Plug - Pipe	9 1 2
92-8967	Shield - Dampener	8 3 1	302-11	Fitting - Grease	2 43 1
92-8972	Clamp - Seat	6 10 2	321-4	Screw - Cap Hex. Hd.	21 10 2
92-8973	Angle	6 8 2	321-4	Screw - Cap Hex. Hd.	1 32 1
218-461	Nut - Hex.	4 9 1	321-6	Screw - Cap Hex. Hd.	13 16 2
218-489	Fuse Holder Assembly	4 13 1	321-18	Screw - Cap Hex. Hd.	16 30 1
218-598	Fuse - 20 Amp.	4 12 1	321-23	Screw - Cap Hex. Hd.	14 21 4
2210-118	Gasket - Exhaust	7 32 1	322-2	Screw - Cap Hex. Hd.	6 7 8
232-35	Valve - Stem	16 22 2	322-3	Screw - Cap Hex. Hd.	20 19 2
232-35	Valve - Stem	2 24 1	322-4	Screw - Cap Hex. Hd.	1 11 2
233-25	Knob - Throttle	4 6 1	322-4	Screw - Cap, Hex. Hd.	9 24 4
233-39	Knob - Lift Valve	14 7 1	322-5	Screw - Cap Hex. Hd.	2 10 4
237-22	O-Ring	9 2 1	322-5	Screw - Cap Hex. Hd.	1 22 3
237-30	O-Ring	9 44 2	322-6	Screw - Cap Hex. Hd.	6 3 4
237-42	O-Ring	15 2 2	322-14	Screw - Cap Hex. Hd.	12 1 1
237-42	Seal - O-Ring	14 5 2	322-16	Screw - Cap Hex. Hd.	8 26 4
237-42	Seal - O-Ring	8 17 2	322-17	Screw - Cap Hex. Hd.	13 3 1
237-42	Seal - O-Ring	16 41 1	323-6	Screw - Cap Hex. Hd.	1 10 2
237-78	O-Ring	19 1 2	323-6	Screw - Cap Hex. Hd.	20 13 3
237-78	Seal - O-Ring	16 8 2	323-6	Screw - Cap Hex. Hd.	21 13 3
237-78	Seal - O-Ring	14 14 2	323-6	Screw - Cap Hex. Hd.	8 18 2
237-79	Seal - O-Ring	21 4 1	323-7	Screw - Cap Hex. Hd.	7 3 1
237-79	Seal - O-Ring	8 8 3	323-7	Screw - Cap Hex. Hd.	8 5 2
237-79	Seal - O-Ring	16 15 4	323-8	Screw - Cap Hex. Hd.	7 22 2
237-80	Seal - O-Ring	8 16 1	323-9	Screw - Cap Hex. Hd.	7 16 1
237-80	Seal - O-Ring	21 19 1	323-11	Screw - Cap Hex. Hd.	9 46 4
237-80	Seal - O-Ring	2 29 2	323-11	Screw - Cap Hex. Hd.	7 21 1
237-86	O-Ring	9 15 2	323-13	Screw - Cap Hex. Hd.	7 29 2
237-86	O-Ring	9 49 2	323-29	Screw - Cap Hex. Hd.	2 23 3
237-95	O-Ring	9 27 1	325-5	Screw - Cap Hex. Hd.	16 17 4
237-100	Grommet	1 19 1	325-8	Screw - Cap Hex. Hd.	8 11 2
237-136	Grommet	20 3 4	325-10	Screw - Cap Hex. Hd.	16 19 8
237-136	Grommet	21 22 4	3210-4	Screw - Cap Hex. Hd.	13 1 1
240-9	Grommet	20 28 3	3217-6	Nut - Hex.	7 35 2
242-50	Nut - Lug	2 17 4	3217-7	Nut - Hex.	7 9 5
242-50	Nut - Lug	16 23 8	3217-9	Nut - Hex.	16 34 8
2410-73	Retainer - Tether	21 25 1	3217-9	Nut - Lock	8 33 2
2412-36	Clamp - Hose	20 7 2	3217-16	Nut - Hex.	13 8 2
2412-37	Muffler Clamp Assembly	7 1 1	3217-25	Nut - Hex.	4 26 2
2412-39	Clamp - R	1 4 2	3218-13	Nut - Jam	4 35 2
2412-41	Clamp - R	1 26 1	3219-2	Nut - Hex.	13 2 1
2412-44	Clamp - R	7 17 1	3219-3	Nut - Hex.	4 24 1
2412-70	Clamp - R	16 47 2	3219-14	Nut - Hex.	4 21 8
2412-73	Clamp - R	20 23 1	3220-4	Nut - Jam	12 13 2
2412-73	Clamp - R	1 33 1	3234-33	Screw - Cap Hex. Hd.	4 2 4
2412-73	Clamp - R	4 39 1	3234-33	Screw - Hex. Flange Hd.	1 31 4
2412-81	Clamp - R	7 20 1	3241-5	Screw - Square Hd. Set	8 27 4
2412-108	Clamp - Hose	7 15 3	3249-11	Screw - Round Hd.	13 5 2

\*Not Illustrated

# TORO PART NUMBER INDEX (Cont.)

3316-640

Part No.	Description	Pg. No.	Ref. No.	Qty.	Part No.	Description	Pg. No.	Ref. No.	Qty.
3250-36	Screw - Phillips Hd.	20	6	4	3296-4	Nut - Lock	2	36	2
3250-36	Screw - Phillips Hd.	21	20	4	3296-8	Nut - Lock	16	33	1
3253-3	Washer - Lock	21	9	2	3296-12	Nut - Lock	4	23	2
3253-4	Washer - Lock	6	6	4	3296-12	Nut - Lock	7	24	6
3253-4	Washer - Lock	4	34	2	3296-23	Nut - Lock	2	33	2
3253-4	Washer - Lock	7	34	2	3296-29	Nut - Lock	2	4	4
3253-5	Washer - Lock	8	4	4	3296-29	Nut - Lock	12	7	1
3253-5	Washer - Lock	7	10	4	3296-29	Nut - Lock	6	9	12
3253-7	Washer - Lock	16	27	8	3296-29	Nut - Lock	13	17	1
3253-7	Washer - Lock	8	34	2	3296-29	Nut - Lock	20	18	2
3253-17	Washer - Lock	4	33	2	3296-29	Nut - Lock	8	23	4
3254-1	Washer - Lock	4	20	2	3296-29	Nut - Lock	1	28	3
3254-5	Washer - Lock ITLW	4	10	1	3296-39	Nut - Lock	20	5	3
3254-6	Washer - Lock ITLW	4	25	1	3296-39	Nut - Lock	12	15	1
3254-9	Washer - Lock ITLW	13	7	2	3296-39	Nut - Lock	2	15	3
3255-7	Washer - Lock	4	36	1	3296-39	Nut - Lock	21	17	3
3255-7	Washer - Lock ETLW	13	11	3	3296-42	Nut - Lock	13	9	2
3255-9	Washer - Lock ETLW	7	12	1	3296-42	Nut - Lock	14	15	4
3255-20	Washer - Lock ITLW	4	27	2	3296-42	Nut - Lock	20	22	1
3256-3	Washer - Flat	6	4	4	3296-42	Nut - Lock	1	34	1
3256-14	Washer - Flat	7	23	6	3296-44	Nut - Lock	7	6	1
3256-21	Washer - Flat	4	19	2	3296-59	Nut - Lock	7	7	1
3256-22	Washer - Flat	4	1	2	32103-12	Nut - Wing	20	10	2
3256-22	Washer - Flat	20	11	2	32104-42	Screw - Cap Hex. Hd.	4	37	3
3256-22	Washer - Flat	21	26	1	32104-76	Screw - Cap Hex. Hd.	14	23	2
3256-23	Washer - Flat	12	2	1	32105-2	Screw - Cap Hex. Hd.	4	5	2
3256-23	Washer - Flat	8	24	4	32105-13	Screw - Hex. Hd.	21	1	1
3256-23	Washer - Flat	1	27	3	32120-11	Ring - Retaining	9	36	1
3256-24	Washer - Flat	7	4	3	32120-15	Ring - Retaining	9	34	1
3256-24	Washer - Flat	21	12	3	32121-15	Pin - Spiral	2	47	2
3256-24	Washer - Flat	12	14	2	32121-16	Pin - Roll	8	13	1
3256-24	Washer - Flat	20	14	3	32121-24	Pin - Roll	13	19	1
3256-25	Washer - Flat	12	9	1	32121-91	Pin - Spring	9	38	3
3256-26	Washer - Flat	16	16	4	32121-111	Pin - Spiral	2	6	1
3256-35	Washer - Flat	1	12	2	32121-112	Pin - Spiral	2	11	1
3256-78	Washer - Flat	16	49	1	32136-9	Nut - Slotted	2	46	1
3257-32	Key - Woodruff	8	6	1	32144-11	Screw - Hex. Flange Hd.	4	4	2
3257-32	Key - Woodruff	9	7	1	32144-11	Screw - Self Tapping	16	48	1
3257-42	Key - Woodruff	17	17	1	32151-46	Ring - Retaining	9	13	2
3257-42	Key - Woodruff	18	17	1	32152-10	Nut	19	3	1
3257-42	Key - Woodruff	3	17	1	353-212	Fitting - Hydraulic 45°	16	42	1
3257-42	Key - Woodruff	16	18	2	353-212	Fitting - Hydraulic 90°	14	19	1
3257-42	Key - Woodruff	2	34	1	353-370	Fitting - Hydraulic 90°	8	15	1
3269-32	Rivet - Pop	8	1	2	353-370	Fitting - Hydraulic 90°	21	18	1
3272-16	Pin - Cotter	12	8	1	353-372	Fitting - Hydraulic 90°	1	5	2
3272-23	Pin - Cotter	16	9	3	353-374	Fitting - Hydraulic 90°	8	21	1
3272-37	Pin - Cotter	2	45	1	353-379	Fitting - Hydraulic 45°	21	5	1
3274-69	Screw - Hex. Button Hd.	20	24	1	353-424	Fitting - Hydraulic Tee	16	5	2
3274-93	Screw - Hex. Socket Hd.	2	37	2	353-425	Fitting - Hydraulic Tee	16	4	2
3290-134	Screw - Cap Hex. Hd.	7	27	6	353-426	Fitting Hydraulic 90°	16	14	4
3290-256	Pin - Hair	16	10	1	353-427	Fitting - Hydraulic 45°	2	30	2
3290-357	Nut - Flange Lock	1	3	2	353-431	Fitting - Hydraulic 45°	16	36	1
3290-360	Screw - Cap Hex. Hd.	14	8	2	353-506	Fitting - Hydraulic Straight	21	14	1
3290-378	Tie - Cable	1	*	1	353-511	Fitting - Hydraulic 90°	14	6	1
3290-378	Tie - Cable	7	25	1	353-511	Fitting - Hydraulic 90°	8	20	1
3290-378	Tie - Cable	16	37	1	353-535	Fitting - Hydraulic 45°	21	8	1
3290-496	Nut - Tinnerman	1	15	2	353-877	Fitting - Hydraulic Tee	14	18	1
3296-2	Nut - Lock	14	25	2	354-132	Fitting Hydraulic 90°	16	7	1

\*Not Illustrated

## PRODUCT CHANGES

In an effort to make improvements available to TORO owners as quickly as possible, minor changes are incorporated into Toro's products from time to time that do not become immediately shown in the Parts Catalog. If such a change has been made in your unit, which is not reflected in your manual, see your TORO Distributor or his Authorized TORO Service Dealer for information and part numbers.

## IDENTIFICATION AND ORDERING

### MODEL AND SERIAL NUMBERS

The Sand Pro 3000 has two identification numbers; a model number and a serial number. The two numbers are stamped on a plate located on the left fender. In any correspondence concerning the Sand Pro 3000, supply model and serial numbers to assure that correct information and replacement parts are obtained.

To order replacement parts from an Authorized TORO Service Dealer, supply the following information:

1. Model and serial number of the Sand Pro 3000.
2. Part number, description, and the quantity of part(s) desired.

**NOTE:** Do not order by reference number if a parts catalog is being used; use the PART NUMBER.

## TABLE OF CONTENTS

Description	Page	Description	Page
Shrouding & Oil Cooler Assembly .....	1	Lift Valve Installation Assembly .....	14
Front Wheel & Steering Assembly .....	2	Hydraulic Lift Valve Assembly No. 43-1950 .....	15
Hydraulic Drive Motor Front		Rear Wheel Drive Assembly .....	16
Left Rear No. 75-9830 .....	3	Hydraulic Drive Motor Right Rear	
Dash Panel Assembly .....	4	Right Rear No. 75-9840 .....	17
Electrical Schematic .....	5	Hydraulic Drive Motor Left Rear	
Seat Assembly .....	6	Left Rear No. 75-9831 .....	18
Engine Installation Assembly .....	7	Hydraulic Cylinder Assembly No. 83-7000 .....	19
Hydraulic Pump Installation Assembly .....	8	Fuel Tank Assembly .....	20
Hydraulic Pump Assembly No. 92-8790 .....	9-10	Hydraulic Oil Reservoir & Filter Assembly .....	21
Hydraulic Schematic .....	11	Kohler Engine Model No. M14S	
Traction Pedal Assembly .....	12	Spec. 601561 .....	22-29
Neutral System Assembly .....	13	TORO Part Number Index .....	30-33



